

Register today for K-State ASI Family and Friends Reunion

Plan to “celebrate” during the ninth annual Kansas State University Animal Sciences and Industry Family & Friends Reunion on Saturday, October 7. The ASI department invites ASI alumni and friends back to campus to reunite with friends, faculty, staff and students. The event will be hosted at the Stanley Stout Center on Saturday, October 7.

Starting at 4 p.m., the event will feature premium quality meats and dairy products and a Junior Wildcat Barnyard area designed for the youngest members of the ASI family. You won't want to miss the performance

by the “best band in the land,” the K-State Marching Band.

A highlight of this year's reunion will be the presentation of the Don L. Good Impact Award to Dr. Larry Corah. “Dr. Corah was hired by Dr. Good,” says Mary McCurry, LMIC board member and Family and Friends Reunion chairman says. “That in itself is a sure sign Dr. Good believed Dr. Corah was going to make an impact at K-State. Dr. Corah lived up to this belief as he made strides for the ASI department, while changing students' lives daily.”

The award, presented by the Livestock and Meat Industry Council Inc. (LMIC), is named in honor of Good, who is a former head of the K-State ASI department, and recognizes positive impact on the livestock and meat industry or agriculture.

“Plan to join us for an evening of great food, good music and catching up with friends and ASI faculty and staff,” says Mike Day, K-State ASI department head. “Register today for this great opportunity to have our ASI family together again.”

Take steps to reduce stress on cows and calves at weaning

By Ross Mosteller, Meadowlark District Extension agent, livestock and natural resources

We are entering the time of year when things get busy on most every farm and/or ranch. Combines begin to bring in the harvest and the sounds of bawling cows/calves can fill the air. This can be music to the ears of some, noise to others, but to the cow/calf pair it means stress and stress is seldom a good thing. Market signals are pointing to weaning and moving calves

quickly this fall. Please consider the following points when weaning, especially if you've never thought about reducing stress and the health effects that go with stress.

The goal at weaning is to minimize stress on the calf as much as possible. All studies indicate that stressors such as feed changes, surgeries, commingling, etc., at the time of weaning increase the incidence of BRD and other health issues. Even in proven, properly implemented preconditioning

programs, calves still have two stressors at weaning time - separation from their dams and cessation of nursing. Working on minimizing these stressors should be given thought.

Bovine respiratory disease (BRD) costs the beef industry more than \$1 billion annually in reduced performance, death loss, medicine costs, labor and reduced carcass value. Eliminating all cases of BRD is unrealistic, but no one wants the headaches of dealing with sick cattle. Some producers lack the facilities and/or the feedstuffs to implement a full wean and preconditioning program. Other say there's no choice in their operation but to remove the calves from their dams and sell them without vaccinations, deworming or weaning. This may be true for some, but this likely is only a very small percentage. Following are some weaning options for ranchers to try to help reduce

stress at weaning:

***Wean on Grass.** University research has shown that weaning calves onto grass with fence line contact to their dams, can be an excellent option for farms or ranches that lack the weaning facilities or the necessary feedstuffs. The more similar the environment that weaned calves are placed into, compared to what they've experienced with their mothers, the better the weaning process will be.

***Anti-Nurse Devices.** By using an anti-nurse device, stress is minimized because the calf is left on its dam during weaning. Calves fitted with anti-nurse devices one week prior to weaning, generally are eating or lying down chewing their cud 12 hours after weaning, and their dams are out grazing. Compared to “normal” weaning, the stress level difference is dramatic.

***Limited Nursing Options.** Weaning stress can

be reduced by allowing calves to nurse once daily for about a week before weaning. This is nearly impossible for a large ranch in range conditions, but many smaller herds could successfully use this method. The calves should be limit-fed a complete ration that allows their rumen to adjust to the diet they'll eat in the feedlot.

While a complete preconditioning program is the “gold standard” for post weaning health, complementary or alternative programs may have a place in your herd. Here are a couple ideas.

***Earlier Weaning.** Calves weaned at about 150 days of age tend to have fewer BRD problems than those weaned at 205 days or later. The nutrition options for these calves include high-quality forage or forage-plus-grain. Another advantage of earlier weaning in spring-calving herds is that the cows tend to go into winter in better

condition.

***Pre-Weaning Vaccination and Ship.** Ideally, calves would be held and fed after weaning for a period of time prior to shipment. But if this isn't possible, vaccinating two to three weeks pre-weaning still makes sense. This allows the buyer of the bawling calves to booster them rather than expose the calves to the vaccines for the first time. Consultation with your herd health veterinarian on specific products and timing of all vaccines is always recommended.

With the current value of calves, producers need to look at various options to reduce weaning stress and maximize performance, as each pound is worth record value today. Beyond the financial impacts, there is much to be said for the animal well-being side as well. Well's to a low stress weaning season - for calf and producer alike.



MANHATTAN

COMM. CO. INC. CATTLE AUCTION EVERY FRIDAY

1-800-834-1029 Toll-Free **STARTING 10:00 A.M. ON WEIGH COWS FOLLOWED BY STOCKER FEEDERS — 11:00 A.M.**

OFFICE PHONE 785-776-4815 • OWNERS JOHN & ANNETTE CLINE AND LEE & CINDY NELSON

Our CONSIGNMENTS can now be viewed after 12 Noon on Mondays by going to www.grassandgrain.com & logging onto the online subscription **ONLINE BIDDING AVAILABLE AT LMAAUCTIONS.COM**

For our sale held on Friday, September 15th, steer and heifer calves with quality and condition found very good interest on strong prices, especially on the cattle with shots. Stocker feeder weight steers sold at fully steady prices while the feeder heifers sold \$2-\$3 higher. Cull cows and bulls sold steady on the kind offered. Several Fall bred cows were offered which were finding a good demand, especially on the younger cows.

STEER CALVES — 375-550 LBS.

White City	11 blk	395@328.00
Westmoreland	8 Char	515@322.50
Oskaloosa	4 blk	507@321.00
Onaga	4 Red Ang	456@314.00
Onaga	18 blk	520@310.00
Onaga	18 Red Ang	512@310.00
White City	18 blk	481@309.00
Melvorn	7 blk	449@309.00
Eskridge	7 blk	483@303.00
Riley	8 Ang	548@289.00

FEEDER STEERS — 550-1,075 LBS.

Elmdale	4 blk	555@296.00
Alma	5 blk	652@279.00
Ottawa	5 blk	654@278.50
Onaga	46 blk	629@278.00
St. George	7 blk	707@278.00
Goff	67 blk	764@275.00
Baldwin City	4 Cross	565@272.00
Westmoreland	4 Char	667@271.00
Overland Park	5 Cross	610@266.00
St. George	14 blk	776@261.00
Alta Vista	11 blk	788@260.00
Chapman	14 blk	799@254.50
Overland Park	4 Cross	687@250.00
Goff	23 blk	866@244.50

Alta Vista	6 blk	867@240.00
Chapman	19 blk	1065@224.25
Baileyville	5 Cross	894@217.00

HEIFER CALVES — 375-550 LBS.

Eskridge	5 blk	423@332.00
Ottawa	12 blk	421@310.00
Alma	5 bwf	431@308.00
Alma	5 bwf	497@298.00
Tonganoxie	6 bwf	478@295.00
Westmoreland	5 blk	471@293.00
Onaga	12 mix	424@292.00
Onaga	19 blk	523@282.00
Elmdale	4 blk	388@278.00
Baldwin City	4 blk	523@278.00
Ottawa	5 blk	523@278.00
Ottawa	5 blk	440@278.00
Eskridge	5 blk	524@275.00
Onaga	8 Red Ang	530@273.00
Leonardville	4 blk	512@268.00
White City	7 blk	375@256.00
Melvorn	13 mix	506@227.00

FEEDER HEIFERS — 550-950 LBS.

Onaga	28 blk	556@280.50
Alma	19 blk	571@274.00
Alta Vista	7 blk	615@267.00
Alma	31 blk	716@266.25
Olsburg	6 blk	598@265.00
Westmoreland	8 Char	563@264.00
	10 blk	602@259.50
	12 blk	611@259.50
Frankfort	4 blk	613@257.00
Auburn	5 blk	664@255.00
Overland Park	7 Cross	581@254.00
Westmoreland	4 blk	675@248.00
Council Grove	4 blk	662@246.00
St. George	7 blk	720@245.00
Berryton	20 blk	806@244.75

Goff	87 blk	786@240.25
Morganville	4 blk	656@240.00
Frankfort	4 Cross	723@235.00
Randolph	4 Char	810@233.00
Americus	9 blk	945@231.50
Goff	14 blk	891@225.50

COWS & HEIFERETTES — 700-1700 LBS.

Riley	1 blk	790@216.00
Riley	1 bwf	890@209.00
Riley	1 bwf	840@188.00
Riley	1 blk	775@177.00
AShalnd	1 blk	715@162.00
Riley	1 blk	1105@160.00
Riley	1 blk	1040@158.00
Olsburg	1 Red Ang	1005@148.00
Alta Vista	1 blk	985@146.00
Riley	1 Cross	910@140.00
Alta Vista	1 blk	985@140.00
Riley	1 blk	1005@134.00
Winchester	1 Cross	1050@131.00
St. George	1 blk	1025@128.00
Basehor	1 Cross	1680@126.00
Wamego	1 Cross	1110@125.00
Washington	1 bwf	1555@124.00
Silver Lake	1 Red Ang	1320@122.00

Randolph	1 Char	1595@120.00
Randolph	1 blk	1685@119.00
Frankfort	1 blk	1590@118.00
Olsburg	1 Red Ang	1345@115.00
Wamego	1 blk	1510@115.00
Washington	1 blk	1390@114.00
Wheaton	1 blk	1615@113.00
Winchester	1 blk	1375@112.00
Rossville	1 blk	1335@105.00
Manhattan	1 blk	1295@100.00
Wamego	1 blk	1170@99.00
Alma	1 blk	1200@97.00
Olsburg	1 blk	1155@96.00
Hoyt	1 blk	1265@94.00

BULLS — 1375-2250 LBS.

Westmoreland	1 blk	2235@133.50
Osakaloosa	1 blk	2005@131.50
Washington	1 blk	2105@130.00
Basehor	1 blk	1375@129.50
Alma	1 blk	1545@126.00
Alta Vista	1 Cross	1805@124.50

REPLACEMENT HEIFERS

Auburn	24 blk	@1825.00
--------	--------	----------

SPECIAL STOCK COW & BRED HEIFER SALE

WED., OCT. 11 • STARTING 11:00 AM

— ONLINE BIDDING AT LMAAUCTIONS.COM —

1ST CALF HEIFER PAIRS

- 30 big fancy Ang 1st calf hfrs w/ 60 day Ang calves by side.
- 5 Ang 1st calf hfrs w/ late July-Aug. Ang sired calves by side.
- 20 gentle blk Ang 1st calf hfrs w/ 30-45 day old SimAng sired calves by side.
- 12 choice big blk 1st calf hfrs w/ 45-60 day Ang sired calves by side.
- COMPLETE DISPERSAL OF TODD LOWE CONSISTING OF: 7 home raised SimAng Fall calving 1st calf hfrs w/ Ang sired 30-60 day calves by side.
- 16 Char, blk & Red 1st calf hfrs w/ Char, blk, & Red 60 day calves by side.
- 9 blk 1st calf hfrs with 3 week to 60 day Blk calves by side. Spring shots.
- 2 Red 1st calf hfrs with Blk & Red calf by side. Spring shots.
- 5 Char cross 1st calf hfrs with 3 week to 60 day calves by side. Spring shots.

BRED 1ST CALF HEIFERS

- 20 big fancy gentle Blk Angus 1st calf OCV hfrs with 30-45 day AI sired calves by Select sires RR Endeavor or Lyons Angus bulls. Cows & calves all worked.

BRED COWS:

- B3 HERD DISPERSAL CONSISTING OF: 30 blk & Rd cows, 4-6 yrs, bred Cooper & Holden genetic Horned Heif for Mar.-April calving. 40 blk cows, 3-5 yrs, bred SimAngus for Feb calving. Spring shots.

COW/CALF PAIRS

- COMPLETE DISPERSAL OF TODD LOWE CONSISTING OF: 9 home raised SimAng Fall calving cows, 4-6 yrs, w/ Ang sired 30-60 day calves by side.
- 2 registered White Parks cows, 3 & 6 yrs old, / Ang sired 30-60 day calves by side.
- 12 blk cows, 3-5 yrs, with 30 to 60 daycalves by side. Spring shots.

EARLY CONSIGNMENTS FOR SEPT. 22:

- 75 mostly Char Angus, few Angus str & hfrs, 2 complete rounds of shots in Sept. including Bovi Shield Gold with Pasturella, 450-550#
- 53 blk str & hfrs, 1 rd shots, 550-650#
- 12 choice Blk BWF replacement hfrs, weaned July, 2 rds shots, 650-700#
- 9 home raised mostly blk str & hfrs, long weaned, bunk & hot wire broke, 2 rds shots, 650-700#
- 27 choice Ang str & hfrs, sired by Cline & Nelson bulls. Vacc. BoviShield Gold One shot Aug. 19. 450-600#
- 100 blk Ang str, green, 3 rds shots, 750-850#
- 45 Red Ang str, green, 3 rds shots, 750-850#
- 42 home raised Angus str & hfrs, weaned 30+ days, 3 complete rds shots, 400-600#
- 70 choice Blk str & hfrs, complete Spring respiratory shots, 450-600#

EARLY CONSIGNMENTS FOR SEPT. 29:

- 29 blk str & hfrs, complete rd shots, 450-550#
- 16 blk & Char str & hfrs, weaned 45 days, 2 rd shots, 450-600#

Upcoming Special Stock Cow & Bred Heifer Sale Dates • Wednesdays starting at 11:00 AM
2023: October 11 • November 15 • December 13. 2024: January 10 • February 14 • March 6 • April 10 • May 1

VISIT US ON THE WEB FOR DAILY CONSIGNMENT UPDATES AT WWW.MCCLIVESTOCK.COM

FIELD REPRESENTATIVES			
<p>JOHN CLINE ONAGA 785-889-4775 Cell: 785-532-8381</p>	<p>BRENT MILLER ALMA 785-765-3467 Cell: 785-587-7824</p>	<p>TOM TAUL MANHATTAN 785-537-0036 Cell: 785-556-1422</p>	<p>BRYCE HECK LINN 785-348-5448 Cell: 785-447-0456</p>
<p>ALAN HUBBARD OLSBURG 785-468-3552 Cell: 785-410-5111</p>	<p>DAN COATES BALDWIN 785-418-4524</p>	<p>ANDREW SYLVESTER WAMEGO 785-456-4352</p>	<p>LARRY SCHRICK EASTON 913-547-1315</p>

Kansas Agribusiness Retailers Association elects Kevin Dieckmann as chairman

Kansas Agribusiness Retailers Association's 20-plus member board of directors selected Kevin Dieckmann of BRANDT to serve a two-year term as chairman through August of 2025 during the association's annual meeting held on August 22, 2023 in Manhattan.

"I am honored our membership has selected me to serve as the leader of our association," Dieckmann said. "It's humbling to have the opportunity to help our staff guide the Kansas Agribusiness Retailers Association toward continued success of experiencing agribusiness thrive in the state of Kan-

sas." Dieckmann is the 56th industry leader since 1960 to be picked into KARA's pinnacle role after serving as a devoted volunteer-leader within the association for more than 25 years.

"Kevin Dieckmann has been, and continues to be, a valuable asset to advancing our association," KARA president and CEO Ron Seeber said. "We are excited to embrace Kevin's guidance and thoughtful insight as we continue to evolve our association to enhance our value to our membership."

KARA members also picked an officer succes-



Kevin Dieckmann, left, is congratulated by Dustin Kuntz as he assumes the position of chairman of Kansas Agribusiness Retailers Association.

K-State releases app for animal record-keeping

Kansas State University agricultural economics and veterinary medicine staff are taking their knowledge on animal record-keeping to mobile phones with an app that is now available in app stores for iPhone and Android devices.

K-State livestock economist Ted Schroeder said the app, called CalfDex, is free to download. It was developed by agricultural economist master's graduate Jake Hefley (who now works at the University of Missouri), master's candidate Audrey Marchek, K-State veterinarian Bob Larson and Schroeder.

The project was funded by a grant from the USDA Federal-State Marketing Improvement Program.

"Our team is eager to provide users with a convenient and easy-to-use modern animal data management tool to keep pace in an ever-changing industry," Schroeder said. "Considering the growing importance of information

exchange in the beef supply chain, there is value in an application that has the ability to store and upload data at the whole-herd and individual animal levels, while also facilitating easy downstream data sharing."

The app is designed for use in the field even where cell phone service is not available. Schroeder said CalfDex enables producers to maintain efficient and accurate calving, weaning and treatment records - mitigating the risk of clutter, data loss and misplacement that is commonly seen with paper records. The data is also stored across calving seasons for easy access.

Schroeder said the app allows users to protect information with a unique email address and password, established by the user.

"Because it has the capability to track multiple herds and individual animal information, CalfDex is tailored to meet the needs of all sizes of calving operations, from large purebred enterprises to a 4-H or FFA student beginning their first beef breeding project," Schroeder said.

More information on the app, including a description of its functions, is available online, as well as on AgManager, a website maintained by K-State's Department of Agricultural Economics. A tutorial is available at <https://calfdexapi.azurewebsites.net/>, or questions can be directed by email to CalfDex@ksu.edu.

tion consisting of vice chairman, Scott Morris of ProValue Insurance and second vice chairwoman Jami Loecker of Syngenta. Other members elected to new, or renewed, terms on the board of directors were: Aaron Anderson (APEX Ag, Inc.), Gary Beachner (Beachner Grain), Jeff Holling (Central Valley Ag), Brian Laverentz (FMC), Warren

Mayberry (Corteva), Jackie Mundt (Kanza Coop), Justin Ochs (SW Freedom Ag, Inc.) and Dave Tierney (Bayer).

Following the annual business meeting, nearly 60 KARA members raised almost \$2,000 for the association's scholarship fund before enjoying networking and golf in the 100-plus degree temperatures in eastern Kansas.

Results announced from KHSRA-KJHSRA rodeo in Canton

Following are the results from the KHSRA-KJHSRA rodeo held recently in Canton.

Average

HS Bareback-Braedon Crain; JH Bareback-None. HS Saddle Bronc-Ransom Tiffany; JH Saddle Bronc-Pake Bailey; HS Bulls-Easton Hensley; JH Bulls-Bronsyn Dowdle; HS Barrels-Olivia Harland; JH Barrels-Grace Chadd; Steer Wrestling-Ryder Dent; Chute Dogging-Jake Doles; JH Calfraping-Tagg Bond; JH Calfraping-Wyatt Ritz; HS Breakaway-Brekyn Zook; JH Boys Breakaway-Logan Vander Hamm; JH Girls Breakaway-Adeleigh Pot-

ter; Ribbon Roping-Pake Bailey and Kelsey Schouten; HS Team Roping-Dex Hoelting and Jhett Vander Hamm; JH Team Roping-Steele Smith and Logan Vander Hamm; HS Goats-Madison Scott; JH Girls Goats-Kaycee Clark; JH Boys Goats-Steele Smith; HS Poles-Taylor Damme; JH Poles-Blakely Jones; Boys Cutting-Announced in GC; Girls Cutting-Announced in GC; Reined Cow Horse-Announced in GC.

All Around Winners

HS Cowboy-Tagg Bond; HS Cowgirl-Madison Scott; JH Cowboy-Steele Smith; JH Cowgirl-Grace Chadd.

July pork exports continue above year-ago; slow month seen for beef exports

Building on a robust first-half performance, July exports of U.S. pork continued to outpace year-ago levels, according to data released by USDA and compiled by the U.S. Meat Export Federation (USMEF). Beef exports took a step back in July, posting the lowest volume since January, but export value per head of fed slaughter again exceeded \$400.

Western Hemisphere markets bolster July pork exports

July pork exports totaled 219,014 metric tons (mt), up 5% year-over-year, while export value increased 1% to \$628.7 million. Exports to leading market Mexico continued on a record pace, while July shipments also increased significantly year-over-year to Central America, Taiwan, Oceania, the ASEAN region and Canada.

Through the first seven months of 2023, pork exports were 13% above last year's pace at 1.69 million mt, valued at \$4.67 billion (up 10%). This included record-large shipments of pork variety meat, which totaled 345,070 mt, up 28% from a year ago, valued at \$812.7 million (up 19%).

"Market diversification has been the top priority for the U.S. pork industry and those efforts are certainly reflected again in these results," said USMEF President and CEO Dan

Halstrom. "In July, exports trended lower to China/Hong Kong, Japan and South Korea, but our Western Hemisphere markets and other destinations in the Asia-Pacific continued to shine. This is exactly the type of broad international footprint the industry needs to maintain consistent export growth."

July beef exports climb to Mexico and Taiwan but most markets trend lower

July beef exports totaled 103,167 mt, down 18% from a year ago and the lowest in six months. Export value was \$810.4 million, down 19% and the lowest since February. Exports posted year-over-year gains in July to Mexico, Taiwan, Canada, Hong Kong and Africa and increased sharply to Peru and Honduras. But July exports to the top three destinations for U.S. beef - South Korea, Japan and China - were well below last year's large totals.

For January through July, beef exports trailed last year's record pace by 11% in volume (772,343 mt) and 19% in value (\$5.81 billion).

"It's definitely a challenging environment on the beef side, due in part to limited supplies but also persistent headwinds in our key Asian markets," Halstrom explained. "Though it's taking longer than anticipated, we still expect a broader foodservice rebound in Asia. And some bright spots for U.S. beef include sustained demand in Taiwan, especially for alternative beef cuts, and the continued momentum in Mexico. It's also encouraging to see per-head export value maintaining a high level. This is an important metric for gauging the returns delivered by the international markets, even when our production is trending lower."

Lamb export volume rebounds in July

Following a slow second quarter, July exports of U.S. lamb muscle cuts showed signs of a rebound. July export volume was 197 mt, up 22% from a year ago and the highest since March. Export value was \$928,000, down 2% year-over-year but the highest since April. For January through July, lamb exports were 1% below last year's pace at 1,264 mt, while value fell 6% to \$7.3 million. Markets trending higher included Mexico, Canada, the Netherlands Antilles, Panama and Guatemala.

A detailed summary of the January-July export results for U.S. beef, pork and lamb, including market-specific highlights, is available from the USMEF website.

Kansas Hay Market Report

Proud sponsor of the Kansas Hay Market Report is Bestifor.

**Due to the Kansas State Fair, the Kansas Department of Agriculture did not publish a Hay Market Report for this week. The report will resume next week. **

BESTIFOR
QUALITY IS OUR LEGACY

Producers of Alfalfa, Prairie Hay, Teff Grass

Buying all types of Alfalfa, Grass, & Straw year round. Purchasing hay in field or delivered to our Belleville KS facility. Trucking available.

bestifor.com | 785.527.2450 | info@bestifor.com

ANTIQUE STOVE AUCTION

SATURDAY, SEPTEMBER 30, 2023 — 10:30 AM

PREVIEW: Friday, September 29, 4-6 PM

Located at 140 W. 14th Street, AUBURN, KANSAS

**SELLING 140+/- ANTIQUE WOOD BURNING STOVES.

Condition ranges from Restored to Original to Parts Stoves

15+ stove books, plus literature; assorted small stove-related collectibles & memorabilia; selection of finials, air adjusters, lid lifters, Indian feathers, etc., etc.; 3 stove jacks; platform scale; Vintage Toledo elec. computing scale; Antique Toledo grocery store scale; Antique Fairbanks platform scale; Antique National Cash Register; **MANY MORE RELATED ITEMS!**

NOTE: This is a LIFETIME accumulation of Dan's passion for collecting all things Antique stove-related. Bidding in person or by phone, NO Online Bidding. No Buyers Premium or sales tax. CASH or CHECK ONLY.

RUTH POTTER & The Late DAN POTTER, SELLERS

Pics & Info: www.wischroppauctions.com
WISCHROPP AUCTIONS * 785-828-4212

save the date for the 3rd annual

GRASS & GRAIN FARM AND RANCH SHOW

FREE
ADMISSION

NOV.
7-8,
2023

FREE
PARKING

Starting at 9:00 a.m. each day.
Located at the National Guard Armory,
721 Levee Dr., Manhattan, KS

45,000 sq. ft. of exhibit space featuring a wide array of Farming & Ranching Businesses

SEMINARS:

- Tuesday -

Risk Management Workshop

Starting at 6:00 p.m., by StoneX

- Wednesday -

Risk Management Workshop

Starting at 10:00 a.m., by StoneX

K-State Vet Med

Starting at 2:00 p.m., Dr. Matt Miesner

Food Vendors:

Flyin P Concessions, Vathauer Catering

Heaters sponsored by Alkota of Kansas

--- FFA Giveaway ---

\$150 per day will be drawn to be given to an FFA chapter in attendance. Sponsored by Rockin' S Ranch Supply.

Grass & Grain / FFA Food Drive to benefit the Flint Hills Breadbasket in Manhattan:

Bring a non-perishable food item to receive a bonus entry into the ShowBucks Drawing.



CHEF
ALLI
NOVEMBER 7
10 A.M.



Tractor Display by
Kansas Chapter #3
of the IHC
Collectors Club



FREE
Call Hall Ice Cream
daily at 1 p.m.

Daily \$250 ShowBucks Drawing

ShowBucks can be used with any of our exhibitors. *Not valid at the food vendors*

Grass & Grain
Farm & Ranch Show



785-539-7558



PUBLIC AUCTION

SATURDAY, SEPTEMBER 30, 2023 — 10:00 AM

LOCATION: 2665 O Road, BERN, KANSAS 66408

DIRECTIONS: From Bern, KS: 1 mile South on O Road - West Side

TRACTORS

2003 Case IH MXM 130 FWA - 4900 Hrs, 18 spd, Good Rubber, Sells w/2166 Great Bend Loader w/Grapple Fork; Case 1370 Power Shift Dual Hyd, Good Rubber, Axle Mount Duals.

SKID LOADER, TRAILER & ATTACHMENTS

2007 Case 420 CT 990 Hrs, Rubber Tracks, 6 ft Bucket, Cab Heat Only; 2020 Titan Tilt Bed Trailer, 20 ft, Tandem Axle, New; 5 ft Rock Bucket; 6 ft Bucket w/Teeth; 2 Prong Bale Fork; Skid Loader Plate.

MACHINERY

2018 200 gal 3 Pt Sprayer, 25ft Booms; Woods Batwing 21ft Shredder; 120 Bu Gravity Wagon w/Tarp; Westfield 61ftx10 in. Auger - Swing-Away Auger; 200 Bu Gravity Wagon w/Hyd Auger; 12 ft Easy Flow; Case 13 ft Off Set Disk; Case Wheel Weights; Winco PTO Generator - 15,000 Watts; 2-Prong 3 pt Bale Carrier; 3 pt Bale Spear; 8 ftx6 ft Tilt Trailer - Home-made; Wil-Rich 21ft Field Cultivator w/Harrow Attachment; JD 640 Rake 4 Bar w/Dolly Wheel; 7 Shank V Ripper; JD 6-Row Front Mount Cultivator; 4-Bottom JD Steerable Plow; Massey Ferguson 4-Bottom Plow; 3 pt Log Splitter; Woods 6200 60 in Zero Turn Mower, 25hp, 850 Hrs, Uses Oil; Polaris Sportsman 400 4x4 4-Wheeler, 2600 Hrs.

TOOLS & LIVESTOCK EQUIP.

Approx. 15 Metal Gates 16 ft, 2- 16 ft Wooden Feed Bunks, 16 ft Hay Bunk, 5 ft Water Tank, Plastic Water Tank, Calf Bunk, Large Assort of Electric Fence Post, T-Post, Barb Wire, Smooth Wire, Hand Wire Winder, 20 Ton Press, Lincoln SP-175 T Wire Welder, 3 Shop Vacs, Weed Eater, Milwaukee 18 volt Grease Gun and 1/2 in Impact, ATV Sprayer, High Pressure Washer 2900 PSI-New, DeWalt Chop Saw, High Speed Grinder, 1/2 in Electric Impact, Craftsman Combination Set, 1/2 in Impact Sockets, ATV Seeder, Weed Eater w/Tree Blade, Mantis Tiller, Back Pack Hand Sprayer, Jorsered 2054 Chain Saw 16 in bar, RYOBI Radio Arm Saw 8 1/4 in, 1-1100 x 20 Tire-New, 3-6 ftx3ft Rubber Floor Mats, 4-Heated Hog Mats, Log Chains, 2-300 gal Fuel Barrels w/Stand, FIMCO 25 gal Pully Type Lawn Sprayer, Agri Fab Pull Type Lawn Spreader, 3-1 hp Motors.

POOL TABLE & MISC.

EHRlich 9 ft Snooker Table - Buyer has to remove from the house. Coors pool table light, Radio Flyer wagon, coal bucket, porch swing, old golf clubs, Blue Rock thrower, General refrigerator, 80 gal propane tank, lanterns, yard art, dining room table & 6 chairs, bushel basket, wooden pulleys, drop leaf table, metal filing cabinets, ice cream maker.

SELLER: LEONARD & LARRY GROSE ESTATE

Auction Conducted by: WILHELM AUCTION SERVICE

DALE WILHELM, 785-294-8569 • DANNY DETERS, 785-336-1622

NFWF awards \$4 million America the Beautiful Grant to Land Trust Partnership; Ranchland Trust of Kansas among recipients

The National Fish and Wildlife Foundation (NFWF) awarded a four-year, \$4 million America the Beautiful grant to Texas Parks and Wildlife Department to support the PLJV partnership – including Colorado Cattlemen's Agricultural Land Trust, Nebraska Land Trust, New Mexico Land Conservancy, Ranchland Trust of Kansas, and Texas Agricultural Land Trust – in conserving more than 250,000 acres of grassland. The Southern High Plains Grassland Protection, Restoration and Enhancement Project will enable the five land trusts to share best practices across the region and to permanently protect working grasslands for the benefit of wildlife and people.

Through this project, the partners will work together to implement land protection that benefits at-risk wildlife, expands habitat connectivity, provides a range of ecosystem services, engages local communities, and contributes to their economies.

This project is the result of over three decades of PLJV's granting work with ConocoPhillips, setting the stage for an active partnership of land trusts to collaborate on best practices and strategies for overcoming environmental and political challenges to their work. In 2022, PLJV hosted an inaugural roundtable discussion where the land trusts in the PLJV ConocoPhillips Land Trust Program brainstormed different ways of collaborating across their respective boundaries.

"We quickly realized that the distinct characteristics of each land trust grantee – including differences in capacity, amount of intact grasslands, parcel size, and protection laws and regulations – had the potential to make more of a lasting impact as a formal partnership, and the NFWF America the Beautiful grant program was the perfect opportunity to demonstrate that," said Andrew Mackintosh, PLJV business director.

Mackintosh then worked with our four existing grantees and one additional partner – Nebraska Land Trust – to develop the joint project proposal, with Texas Parks and Wildlife as the state lead. The partners will be working to implement the following objectives over the next four years:

1. Accelerate grassland protection by supporting transactional, acquisition, and stewardship costs of new easements.
2. Invest in regional outreach to landowners to encourage enrollment in permanent conservation easements.
3. Restore and manage grassland to maintain high-quality blocks of grass for the benefit of wildlife.

Through this project, the partners will work together to implement land protection that benefits at-

risk wildlife, expands habitat connectivity, provides a range of ecosystem services, engages local communities, and contributes to their economies. While an ambitious project, its goals are achievable thanks to the combined expertise of the partners, each with their own unique strengths. The project also supports PLJV's ongoing development and improvement of GIS models for targeting, prioritization, and accounting of conservation impact.

"Our intent under both the PLJV ConocoPhillips Land Trust Program and the NFWF America the Beautiful grant has been to empower our land trust partners to deliver conservation according to the unique characteristics of their region while aligning their work toward a common purpose. We are happy to report that that is exactly what is happening," says PLJV coordinator Mike Carter.

Below you can learn more about what each major partner will be doing as part of this project.

Texas Parks and Wildlife Department

As the lead state agency, Texas Parks and Wildlife Department (TPWD) is hosting the award. They will disburse the project's funds while also continuing to play a key role in helping guide the partnership in achieving its habitat protection goals. A special thanks goes to them for supporting our grant application to NFWF.

Colorado Cattlemen's Agricultural Land Trust

Colorado Cattlemen's Agricultural Land Trust (CCALT) will secure the perpetual conservation of 60,000 acres of ranch land and deliver more than 15,000 acres of additive grassland restoration (e.g., native grass reseeding and invasive woody plant management) in eastern Colorado. CCALT has nine conservation easement

projects in various stages of development and more than eight landowners looking to implement additive conservation projects on their properties. There are also additional opportunities for this additive conservation work to overlap with playa conservation projects, with 18 conservation easements spanning more than 55,000 acres that intersect with PLJV-identified playas.

Nebraska Land Trust

Nebraska Land Trust (NLT) will develop and implement an annual communications plan which strategically increases awareness of NLT and conservation easements, with a goal to protect 10,000 new acres. One focus area will be to expand landowner communications in order to facilitate cooperative projects for grassland management, such as control of invasive eastern redbud trees, and another focal area will be to provide resource information on permanent conservation easements to address perceived barriers and encourage additional enrollment. Nebraska is one of only three states that require county approval on conservation easements.

New Mexico Land Conservancy

Currently, New Mexico Land Conservancy (NMLC) has 130 conservation easements, 17 of which protect 115,000 acres of prairie grassland across eastern New Mexico. NMLC will leverage this success to acquire at least 80,000 acres of new easements in the targeted area. Their work will include planning, outreach and implementation of new conservation easements and other associated restoration projects to permanently protect and sustain the health of grasslands in the Southern High Plains.

Ranchland Trust of Kansas Ranchland Trust of Kansas (RTK) will create expansion opportunities to complement 22 exist-

ing easements and 16,850 acres protected through private landowner collaboration across the state. As a nonprofit agricultural land trust and affiliate of the second largest livestock association in the country, RTK will maximize relationships with private landowners and conservation entities to employ a co-designed process between program partners and users. Technical activity will include the establishment of range and grassland easements with additive wetland restoration when applicable.

Texas Agricultural Land Trust

Texas Agricultural Land Trust (TALT) will acquire 100,000 acres in new conservation easements in Texas and Oklahoma. In addition to their efforts to protect working lands, TALT is also embarking on additive conservation through ecosystem service markets to provide new tools and resources to landowners. These markets focus on recognizing the value of working lands and compensating landowners for their contributions to society, nature, and more. TALT will help accelerate the devel-

opment and adoption of voluntary ecosystem services markets in a way that builds on its current work to protect farm and ranch land through conservation easements.

Playa Lakes Joint Venture

Under this project, Playa Lakes Joint Venture (PLJV) will provide administrative and technical support to assist the partnership achieve its goals. PLJV will be serving as a liaison between TPWD, NFWF and our land trust partners. We will also be

providing technical capacity to assist land trusts in identifying areas that have high values for regional habitat conservation as well as tracking and accounting for impacts of the project. By increasing the regional conservation impacts of easements through targeting and conveying these impacts via tracking and accounting, PLJV will work to identify opportunities to sustain and build upon this project to achieve our land protection goals.

**FANTASTIC TWO-DAY
NATIVE AMERICAN
ART AUCTION**

**FRIDAY, SEPTEMBER 29, 2023 — 6:00 PM &
SATURDAY, SEPTEMBER 30, 2023 — 11:00 AM**
4795 Frisbie Road — SHAWNEE, KANSAS 66226





**ONLY AUCTION
IN KANSAS
THIS YEAR!**
Preview:
Friday at 4 PM
Saturday at 10 AM

**Great Collection of Pottery, Navajo Baskets,
Hopi & Navajo Kachinas, Jewelry, Bags,
Sand Paintings & SO MUCH MORE!**

View the website or call for flyer.
**THIS IS A FANTASTIC OPPORTUNITY FOR COLLECTORS
& DEALERS ALIKE. YOU DON'T WANT TO MISS IT!**
BOB & DAL PAYNE * PAYNE AUCTION CO.
LINDSAY AUCTION, 913.441.1557
www.lindsayauctions.net

NOW IS A GOOD TIME TO GET RID OF UNUSED ITEMS ON THE FARM

GRASS & GRAIN Classifieds *are the perfect way to do it!*

CLASSIFIED LINER ADS:

70¢ per word.

Discounts available for pre-paid ads that run 2+ weeks.

Visit us online, give us a call, stop by, or fill in and mail the ad form on page 16 to submit a classified liner ad.

CLASSIFIED DISPLAY ADS:

\$11.50 per column inch.

Discounts not available.

Give us a call, stop by, or contact your Grass & Grain sales rep to place a classified display ad!

www.GrassAndGrain.com

785-539-7558

1531 Yuma St • Manhattan, KS 65502

CLASSIFIED LINER ADS look like this. First line is in all-caps and bold. No other formatting available. Pay by-the-word. Words counted by a space. Phone numbers or words separated by a dash are 1 word. Words separated by a backslash are counted as 2.

CLASSIFIED DISPLAY ADS LOOK LIKE THIS!

- Includes a defining border around the ad.
- Pay by the inch.

All formatting is available. Photos/logos optional.
Can be 1 or 2" columns wide.
**Depending on classification*

Color is now available for classified display ads!
**Color is \$15.50 per in. Ad must be at LEAST 1colX3.5" to run in color in the classified section.*

Rezac

Livestock
Commission Co.

*was one of the first barns to advertise
in Grass & Grain.*

"Grass & Grain is good value for our advertising dollars."

"We use Grass & Grain because they reach a lot of buyers and sellers. The market reports are simple to read and right there for you. It's a good place to see consignments and market prices ahead of time."

You too could be reaping the benefits of Grass & Grain advertising!

Don't hesitate, call TODAY:

785-539-7558

Or stop by to talk with one of our advertising representatives:



1531 Yuma St. Manhattan, KS

"I put an implement on the free online ad site and got no calls. I put it in Grass & Grain and got eight calls the first couple of days... and sold it."

~ Russell Reichart, Holton ~

GRASS & GRAIN
CLASSIFIEDS

Bringing buyers & sellers
together for 65 years

785-539-7558 • www.GrassAndGrain.com

CLASSIFIEDS

CLASSIFIED AD DEADLINE IS 10:00 A.M. FRIDAY

RATES AND DISCOUNTS

CLASSIFICATIONS

Although complete name, address and phone number need not appear in your ad, we must have this information for our records.

Name: _____ Phone #: _____

Address: _____ City: _____ State: _____ Zip: _____

TIPS: Phone numbers & hyphenated words count as one word. Words separated by a / count as two.

WRITE YOUR AD HERE



FIGURE YOUR COST HERE:

RATE: 70¢ a word.

Number of words: _____ @ 70¢ each

Cost for one week: _____

Multiply one-week cost times number of weeks you want ad to run.

Run ad _____ consecutive weeks.

CLASSIFICATION: _____

Cost for _____ weeks: _____

DISCOUNTS: (For PRE-PAID orders only)

deduct 10% if ad runs 2 or 3 weeks;

deduct 25% if ad runs 4 weeks.

Less discounts: _____

TOTAL: \$ _____

PAY WITH (PLEASE CIRCLE ONE):

CHECK MASTERCARD VISA DISCOVER

Card No. _____ Exp. Date _____

V-Code _____ (required) last 3 digits (see sample: 567) located on the back of your credit card on the signature panel.



Signature: _____

REMINDERS

- Please notify us of any errors at once. We cannot be responsible beyond the first insertion.
- NO REFUNDS!
- BY PHONE: Ads not accompanied by payment have \$1.00 billing charge added, and discounts are not available.



Four Ways To Place Your Ad

CALL: 877-537-3816 TOLL-FREE OR 785-539-7558

MAIL TO: AG PRESS, Box 1009, Manhattan, Kansas 66505

FAX: 785-539-2679

ONLINE: www.grassandgrain.com




CATTLE

ANGUS BULLS
Yearling to 2 year olds
Performance Data Available
Good Maternal Traits
Fertility Tested
Continuously raising Angus cattle for 74 years.

Vering Angus
Greg Vering
Marysville, KS
785-562-7164 Cell
785-562-3988 Home

CATTLE

ANGUS & SIMMENTAL-ANGUS BULLS



- Priced for the commercial cattleman
- Yearlings & 2-year olds w/ calving ease and growth
- Excellent selection w/ volume discounts
- Performance data available
- Good maternal traits

HUNINGHAKE ANGUS
Frankfort, KS
Leo Huninghake
Home: 785-292-4537
Cell: 785-556-2648

CATTLE

DD ANGUS

SENECA, KS

Private Treaty
18 Month Angus Bulls
AI Sired
Registered
Calving Ease
Gentle Disposition
P.I. Negative

David J. & Doris,
Daren Ronnebaum
785-294-0086

CATTLE

HEREFORD BULLS
Good bulls with balanced EPD's, practical development, good disposition, & eye appeal.

Oleen Cattle Co.
Falun, KS
oleencattleco.com
GLENN CHUCK
785-826-0870 785-452-2961
BRANDON 785-452-8148

FOR SALE: HEREFORD BULLS
Horned and polled, 2 yr olds & yearlings. Cows with calves, yearling heifers. 4H & FFA show prospects. Free delivery.

Davis Herefords
Maple Hill, KS
Dean, 785-256-4643
Danny, 785-383-2493

HORSES

BUYER FOR ALL TYPES OF horses. Call Charlie, 785-556-5740.

HORSEDRAWN SINGLE seat buggy. New wheels with rubber. Detachable canopy. Single or two horse hitch. Plus sled runners. \$2,000. Text 785-410-8152.

FEED & SEED

CLEAN TRITICALE SEED for sale. Call Brock Baker, 316-249-1907.

BROME GRASS SEED
Cleaned, tested. 50 lb. bags \$2.50/lb. Whitewater, 316-727-0845.

LIVESTOCK EQUIPMENT

HOLD 'EM FENCE Company barbed wire, welded continuous fence, pipe, custom tubs, gates, alleyways. Cell 785-313-4552, http://www.holdemfence.com

FOR SALE- LARGE ROUND rolls of corn stalks, harvested after high moisture corn. Call Brock Baker, 316-249-1907.

PASTURE

LOOKING FOR 2024 summer pasture for 300 steers. Call Brock Baker, 316-249-1907.

WOLF CREEK ANGUS RANCH

19 ANGUS BULLS
Available Now by Private Treaty

FEATURED SIRE:
Hoover Dam, Dually, Compass, Legendary

- Performance Tested
- Fertility Tested
- Fully Guaranteed
- Free Delivery in KS & NE
- Volume Discounts

See Photos, Prices, & Performance Info at:
www.WolfCreekAngus.com
LURAY, KANSAS
785-698-2225

SPRINGHILL HEREFORDS



Home of the Round Barn

FOR SALE PRIVATE TREATY Service-Age Bulls

Calving Ease • Performance Efficient • Docile

Dave Stump
785-556-0124
Dan Schmidt
785-562-6685
Blue Rapids, KS
Visit us at
SpringhillHerefords.com
A Gold TPR Breeder

RED & BLACK ANGUS BULLS



- ★ Yearling & 18 Month Old Bulls
- ★ Calving Ease with Great Growth
- ★ Performance Data Available
- ★ Good Maternal Traits & Great Disposition
- ★ Reasonable Prices
- ★ Bring this Ad - Receive \$50 Discount

Randy Huninghake
Frankfort, KS
785-556-0319 Cell
785-292-6019 Home



Angus, Red Angus & Charolais Bulls For Sale

- Over 250 18 month old & Spring yearling bulls available
- Your Private Treaty Headquarters. Over 25 years experience in Private Treaty & Sight-Unseen Sales. You won't be choosing from bulls that "didn't make the sale" or were "caught" in the auction.
- Our goal is to get the right bull to the right herd every time.
- See our display ad in this issue.
- Videos, data, and catalog available on our website. Please check for updates throughout the Spring.
- Genomic enhanced EPD's on every bull in all three breeds.

It's time to come home to...

HARMS PLAINVIEW RANCH
Mark & Kim Harms
2528 250th Street
Lincolnville, KS 66858
Email: hprbulls@tctelco.net
www.HARMSRANCH.com
620-924-5544
Mark Cell: 620-382-6388
Kim's Cell: 620-382-5373

Blue Valley Trailers

TITAN WEST INC
Livestock Handling Equipment

See inventory at:
bluevalleytrailers.com
785-363-2224
Waterville, Kansas

AUTOMOTIVE

New Kuhn Knight RA 142



Several Daycabs available
Feed Mixers and Manure Spreaders
Kuhn Knight, new & used

MID-AMERICA TRUCK EQUIPMENT, INC

Belleville, KS
800-536-2293

TaskMaster

Making tough jobs easier
Luco Mfg. Co

- HYDRAULIC CHUTES
- WORKING CIRCLES
- CAKE FEEDERS
- CONTINUOUS FENCING
- PANELS & GATES

See us at www.lucoinc.com
Or call toll free:
1-888-816-6707
PO Box 385
Strong City, KS 66869

MIDWAY MOTORS SUPERCENTER
McPherson, KS

Hutchinson, Kansas • Hillsboro, Kansas
Newton, Kansas

2020 Ford F250 crew, 4x4, 7.3 gas, auto, nice, 76k mi.
2019 Ram 2500 crew Tradesman 4x4 diesel, auto, only 56k mi.
2022 Ford F350 reg cab XLT 4x4 7.3 gas, auto, nice, 63k mi.
2022 Ford F350 crew XLT DRW 4x4, diesel, auto, long bed, very clean, 37k mi.
2022 Ram 2500 Mega Cab, Longhorn 4x4, diesel, auto, loaded, very clean, 22k mi.
2013 GMC 2500 crew SLT, 4x4, gas, auto, nice, 105k mi.

Ask for Kris Hanschu
krishanschu@midwaymotors.com
620-755-2824

Nelson Angus Farms

We have a greater selection of AI-sired bulls than ever before. Same Great Cows Now Offering... SimAngus & Angus Bulls

20+ Years of AI-Sired Genetics
Semen tested, ready to go!

You have to come see these bulls!

Private treaty sales year-round

Nelson Angus Farms
Leonoville, Kansas
Mike: 785-965-8477
Alan: 785-770-7054
Raymond: 785-486-2378
www.nelsonangusfarms.com / nelsonangusfarms@hotmail.com

BL

200 ANGUS-CROSS BRED HEIFERS

Heifers AI bred for Feb. 2024 Bred to:
Crawford Guarantee 9137, RL Justice, and Connealy Guard Rail 923E

Pasture exposed for 65 days to registered Blythe Angus Bulls: low birth-weight & Calving ease.

Heifers are:
-Vaccinated
-Pelvic measured
-BVD-PI negative
-Calm disposition
-Black & BWF

Blythe Angus Heifer Development
White City, KS
Duane Blythe & Debbie Lyons-Blythe
785-466-1883
785-466-1338

SWINE

SWINE EQUIPMENT
Buildings — Ventilation
Flooring — Feeders
Waterers — Heaters
Crates — Nursery Equip.

K & N Swine Systems
RICK HENRY
785-336-2130
SENECA, KANSAS

FEED & SEED

FEYH FARM SEED CO
Alma, Kansas
Native Grass Seed
Wildflowers
Smooth Brome Grass
Erosion Control Products
Cover Crop Seed
866-765-3415
Nativeseed@Kansas.net
www.FeyhFarmSeed.com

WANTED DAMAGED GRAIN

We pay top dollar for damaged grain. Trucks and vac's available. Immediate response anywhere.

Pruess Elevator, Inc
1-800-828-6642

1,025 Head Sell
AT THE GARDINER ANGUS RANCH
19th Annual Fall Production Sale
Monday, September 25, 2023 • 9 AM
At the ranch • Ashland, Kansas


- 452 Registered Angus Bulls
- 92 Bred Registered Angus Females
- 475 AI Bred Commercial Angus Females

Visit **GardinerAngus.com** for video of sale offering, sale book & more!


Watch the sale and bid live online at **LiveAuctions.tv** and **Bid.SuperiorLivestock.com**. Register to bid prior to sale day.

As always, FREE DELIVERY!

Gardiner Angus Ranch
Office: 620.635.2156
Mark Gardiner: 620.635.5095
GAR@GardinerAngus.com



YOUR Auction Source!



Grass & Grain
785-539-7558
1531 Yuma St
Manhattan, KS

GRASS & GRAIN DIRECTORY

D. ROCHE FENCING INC.
QUALITY BUILT FENCES
DON ROCHE
785-292-4271
FRANKFORT, KS

Custom Manure Hauling & Spreading
Big to Small Jobs!
Chore-Boyz Services
913-636-1099

Blue Valley Drilling, Inc.
Water Well Drilling & Service
Family Business Over 70 Years!
CONTACT ERIC STRADER
785-363-7353

HALDEMAN WELL DRILLING & PUMP SERVICE
785-539-9295
MANHATTAN, KS

AUCTIONEERS

GAVEL & ROADS
ONLINE AUCTIONS
THE PLACE TO GO TO BUY & SELL EQUIPMENT IN THE MARKETPLACE.
Contact Sales Rep, KURTIS GEISLER, at 785.293.2221
www.gavelroads.com
READY... SET... SOLD!

GENE FRANCIS & ASSOCIATES
REAL ESTATE BROKERS & AUCTIONEERS
Serving all 105 Kansas counties with more than 35 years of experience.
Give us a call at 785.556.7162!
www.genefrancis.com
A BID ABOVE THE REST!

Voted BEST Auction Company 2022
CROSSROADS REAL ESTATE & AUCTION, LLC
Providing High Quality AUCTION SERVICES Across Kansas!
ANDREW SYLVESTER, Realtor/Auctioneer
* Kansas Live Auction Champion 2021
* Champion, World Livestock Auctioneer, Midwestern Qualifier 2022
CALL TODAY! 785.539.2732
Crossroads Real Estate & Auction Inc
TERRI HOLLENBECK, Broker/Owner
www.kscrossroads.com
facebook.com/KScrossroadsauctions

Pearl Real Estate & Appraisal Svs., Inc.
MIKE PEARL
Ag Land Sales & Appraisals
• Auctions
• Farm Real Estate Sales & Appraisals
602 W. Bertrand, St. Marys, KS 66536
Office: 785.437.6007
Cell: 785.256.5174
www.pearlrealestate.org
pearlre602@gmail.com

JEFF RUCKERT, OWNER/BROKER/AUCTIONEER
2049 Ft. Riley Lane
Manhattan, KS
785-565-8293
www.ruckertauctions.com

ARMSBID.COM
Kull's Old Town Station invites consignments for our Spring, Summer & Fall Auctions. If you have 1 or 1,000, we'd like to talk to you.
We will also buy collections or individual guns.
Dan@ArmsBid.com or 785-862-8800 • 800-466-5516
Topeka, Kansas

RUCKERT REALTY & AUCTION
Homes, Farms, Ranches, Land, Auctions & Recreational Property

KansasAuctions.Net
Providing you with a single location to get details about local auctions - go prepared!
www.kansasauctions.net/grass

YOUR AD COULD BE HERE!
Grass & Grain • 785-539-7558
or email: auctions@agpress.com

REAL ESTATE

Looking for that special place in the country - to buy or sell?
Call Dolly Anderson, Broker
G&A Real Estate, Inc.
785-532-8801
Manhattan, Kansas
dolly@gandarealestate.com

FARM & RANCH

Land For Sale
Lincoln Co.- 79.4 acres +/- mostly crop land located East of Barnard with blacktop road frontage. Property includes existing well. Call Chris, 785-493-2476
Rice Co.- 1310 12th Rd. - Commercial/ Agriculture property, office space, living quarters, truck scale, 35 acres. Call Chris, 785-493-2476
Saline Co.- 150.6 acre m/l with 109 acres crop land, 35 acres native grass and the balance waterways located Northwest of Glendale. Call Chris, 785-493-2476.
Farm & Ranch Division Of:
COLDWELL BANKER APW REALTORS*
631 E. Crawford St.
Salina, KS 67401
785-827-3641
Cbsalina.com

TRAILERS

CIRCLE D LIVESTOCK & HORSE TRAILERS
FLATBED TRAILERS
1-800-526-0939
www.circle-dtrailers.com

Trailers 4 U
785-292-4166
Frankfort, KS
MERRITT TRAVELONG
www.trailers4u.com

DONAHUE
When There's Work To Do...
DONAHUE!
1-800-457-7406
www.donahuetrailers.com

Blue Valley Trailers
See inventory at:
bluevalleytrailers.com
785-363-2224
Waterville, Kansas

BOB'S TRAILER SALES
Pomona, Kansas
785-418-2227
www.bobstrailersales.com
Circle-D, Elite, Travelong, Bulldog, Titan

USED
• 1990 Ponderosa Goose-neck stock, 18'\$2,600
NEW
• 2023 24x76" Titan Aluminum Stock Trailer\$28,900
• 2023 30' Tandem Dual Elite flatbed\$13,500
• 2023 32' Tandem Dual Elite flatbed\$13,800
• 2023 Bulldog 18+2, (2) 7k axles, stand up ramps\$5,950
• 2023 10+2 x 6'6" 3500k single axle\$1,950
We handle Butler Bale beds
All Elite flatbed trailers low profile and torque tube, dual jacks and toolbox.

MACHINERY

SALVAGING COMBINES
N5, N7, L, L2, M, F, G, C, CII, All, A&E, K Gleaner. 6620, 7720, 8820, 7700, 6600, 4400, 3300, 105, 95, 55, JD, 915, 1480, 1460, 1420, 815 IHC. 860, 760, 750, 510, 410, 300 Massey. Several black & orange Gleaner corn heads.
Jack Boyle
Vermillion
785-382-6849 785-564-0511
785-294-2236

• Double L tree saw, Std Flow, piston motor, sprayer\$7,950
• Pallet Forks, 5500W, Worksaver & Virging\$1,100
• Bale spears, made in KS\$795
• Danuser Python wire roller, 2" hex shaft for auger\$550
• Tar River crop seeders and No Till food plot drills.....IN STOCK
• Sioux Steel livestock auto head gate with squeeze chute.....\$9,250 IN STOCK
• Sioux Steel HiQual hvstk auto head gate w/ squeeze chute working system, curved alley, crowding tub, inline & rail gates \$21,000 pkg
• Danuser Mega Mixer model S75, steel -flighting, for concrete or feed\$6,395
• Montana skid steer post drivers.....IN STOCK
• NAI Rock Bucket w/ Grapple\$3,150
• New Danuser T3 post drivers.....\$2,250
• New Danuser SM40 Hammer.....\$8,750

MACHINERY

WANTED: 4020 JD tractor.
785-608-3504.

CASE-IH 1063 CORN HEAD
Very good condition. 785-238-8441, cell 785-223-7038.

FOR RENT: JD 6 AND 8 ROW
corn heads. Jack Boyle, 785-564-0511, 785-294-2236.

FOR SALE: JD 825 cultivator,
6 row and old JD 24T baler.
785-337-2558.

FOR SALE: JD 9510 combine
with 4WD, Contour Master, Ag Leader. 4,141 separator hours.
Field ready. 785-288-0920.

GRAIN-O-VATOR 125-BU.
wagon for sale. Always shedded. 785-924-3700, 785-364-7400, Circleville.

FOR SALE: 1480 CASE IH
combine. Big engine, big tires, Overhauled planetary and hydro. \$8,500 OBO. 316-616-5651.

PRIEFERT HEAD GATE;
cattle working chute; IHC 510 grain drill 20x8 w/fertilizer; IHC 5088 tractor, cab and air, duals. Dan Catlin, 785-427-6768.

GOOD USED JD CORN head
row units for sale, \$600 each. Salvaging 630 JD hydro flex header. Jack Boyle, 785-564-0511, 785-294-2236.

Case & IH Tractor Salvage
Case 300's thru 2096
IH 460's thru 5488
Over 1000 Tractors on shelf
New & Rebuilt parts for all brands of tractors/ combines
Want to buy Case & IH salvage tractors

Elmer's Repair
CENTRALIA, KS
785-857-3248
www.elmersrepair.com

BERG REPAIR
14200 Godlove Rd.
Westmoreland, KS
785.457.3534

WINKEL
Winkel Calving Pen
Vermeer
Net wrap & twine available.
NEW EQUIPMENT
• BPX 9010 bale processor
• VRB 14 wheel rake
• Portable Corral
• Perfect Tree Saw
USED EQUIPMENT
• VR1224 w/ wing guards
• 505L Baler

CLAAS USED FORAGE HARVESTERS & HEADS
'21 CLAAS 960\$425,000
(2) '18 CLAAS 980fr. \$270,000
'17 CLAAS 980\$250,000
'15 CLAAS 980\$275,000
'15 CLAAS 970\$175,000
'14 CLAAS 970\$225,000
CLAAS Orbis 750 Headsfr. \$40,000
CLAAS PU380 Headsfr. \$10,000

COMBINES
'15 Gleaner S78CALL
'14 Gleaner S67CALL
TRACTORS
'21 CLAAS Axion 950 ...NEW
'12 Case Steiger 450 HD\$158,500
MISCELLANEOUS
NEW Kel-Tec Fuel Trailer (Base)\$19,889
NEW Kel-Tec Fuel Trailer (Loaded)\$27,667
'22 Great Plains Velocity HS2100-36NEW
'21 HORSCH Joker RX35NEW
'15 MacDon D65D\$6,500
MacDon FD75S\$40,000

KALVESTA IMPLEMENT
EST. 1980 - Kalvesta, KS
Kalvesta Impl. Company, Inc.
620-855-3567
KALVESTA, KS 67856
www.kickalvesta.com

• New H&S Manure Spreaders and Hay Rakes.
• 2023 Travelong 7.5 x 36' Livestock Trailer, -X3-K axles, 14 ply tires & spare, 4 compartments: 6'10"/10'/10', 4' Cleated Rubber Floor in Rear, Nose Vents\$35,500
• 2022 Donahue 7 x 24' Livestock Trailer, X2-7K Axles, Spare Tire, 4' Composite Floor in Rear, air vents in nose, 2 solid center gates\$18,500
• Hundreds of Skid Steer Attachments In Stock!

STILLWELL Sales
785-738-0340
stillwelltrailer.com

MACHINERY

WANTED: 6030 OR 4020 in any condition and 4020 hood.
316-616-5651.

Guaranteed Used Truck
Tires, most sizes.
GeeTire.com
Rossville, KS.
785-231-8397

MIKE'S EQUIPMENT
1-620-543-2535
BUHLER, KANSAS
Salvaging Tractors, Combines, Round Balers & Swathers

- USED IMPLEMENTS -
Case IH 8460 round baler
'14 9250 Gleaner Draper, 35'
1998 Gleaner R72
Gleaner 400 30' rigid
Call us for your AGCO part needs!

AGCO ALLIS WHITE EQUIP.
GLENER HESSTON MF • GEIL DIXON HUSQVARNA

Kuhlman Impl.
LINN, KANSAS
785-348-5547

Gleaner Combines
710 EZ trail g-cart\$11,500
510 E-2 trail g-cart.\$7,450
'96 R62 RWA\$19,500
'87 R50\$7,500
R830 corn head\$7,500
EZ Trail Gravity Wagons, Grain Carts, and Header Trailers.
Great Plains Tillage Tools
81 Farm Eq. Service
McPherson, KS 620-241-3100
1-800-357-3101
www.81farm.com

JONES MACHINERY, INC.
GIVE US A CALL!
BUY/SELL/TRADE DAILY
Smith Center, KS
Complete listing on our web:
jonesmachineryinc.com
785-282-3000
785-282-0432 Cell
Tumbleweed Auctions:
785-282-5419

USED TRACTORS
'66 JD 4020 diesel tractor
'89 Ford 5610 2WD
'98 Case IH 8910 MFD ldr & grapple, 8,295 hrs
'08 Case IH Magnum 275, 2973 hrs
'15 CIH Maxxum 150 MFD ldr, 3330 hrs
NEW EQUIPMENT
Case IH Farm 45C MFD w/ldr
Case IH Farmall 65A MFD cab & ldr
(2) Farmall 70A MFD ROPS ldr
Case IH Farmall 105A 2WD cab
Case IH Farmall 110C Hi-Low MFD cab ldr
Case IH Maxxum 150 MFD cab
Case IH 345 disc, 28'
TigerMate 255 field cultivator, 40.5' & 32'
Bush Hog DHM 9 disc mwr
Bush Hog 6' & 7' rotary cutters
Bush Hog 3510 rotary mower 10'
Bush Hog 5' & 7' tillers
Killbros 102 seed box carrier
Killbros 260 seed tender
MISCELLANEOUS
'15 Bushhog 2820 rotary mower, 20'
Brent 776 grain cart
Rhino TW120 rotary mower, 10'
Rhino SE8A rotary mower, 8'
'89 Case IH 1020 flex head, 17.5'
Killbros 1150 grain cart
'06 Strobel Industries 2-box seed tender
'04 New Holland BR780 round baler
JD 670 side delivery rake
JD No. 9 sickle mower, 7'
Super Rhino 8' blade
'09 JD Z445 zero turn mower, 432 hours

NEW RAKES: VR1428
USED
Balers: 6- 605SM, 5- 605N, 2- 605SM corn stalk, 1- 504N, 4- 605M, 1- 604M, 1- 504SI, 1- 6650 Rancher, 1- 6650 Rancher. Rakes: 1- R2800, 2- R2300, 1- VR1224
LARGER BALE FORKS
SPRING STEEL AVAIL.
METAL
ROUND SQUARE TUBING
ANGLE CHANNEL & FLAT
2 3/8", 2 7/8", 4 1/2" pipe
WELDING SUPPLIES
Oxygen C125 & acet. Bottles for sale
Welding rods & wire
Top & bottom belts for all balers
Twine 4' & 5' netwrap
Portable panels, Feed Bunks & Round Bale Feeders
Vermeer Sales & Leasing
LEONARDVILLE, KS 66449
785-293-5583
785-293-2542

SENECA IMPL. CO.
Hwy. 36 West
SENECA, KANSAS
WE ARE DEALERS FOR:
BUSH HOG
Edge attachments;
Meyer MFG spreaders & forage boxes; Kelly Ryan feed wagons; Mensch Mfg.; H&S products; Westendorf loaders.
USED EQUIPMENT
Gehl 125 Mx Grinder Mixer with scales and SAF
Gehl 100 Mx Grinder Mixer with scales
GB 660 ldr, excellent
GB 800 ldr
Steel tapered wagon box w/hoist & JD gear
Rhino 3pt 8' blade
Edge skid ldr hitch plates, weld on Edge skid ldr hitch w/ receiver
Skid ldr tire chains
NEW EQUIPMENT:
H.D. round bale feeders.
Corral panels, 10'-16"
Gates - 4' & 6' walk thru.
Gates, 8'-16"
Danuser Intimidators tree & post pullers
Mesnch tire scrapers
New Grapple buckets - CALL US
Edge tree & post puller
Lowe/Gehl posthole diggers
Danuser EP 1531 posthole diggers
New Pallet forks w/ 1 1/2x4x4 forks
Bale forks, 2 spears

ROSSVILLE TRUCK & TRACTOR
ROSSVILLE, KANSAS
785-584-6195

BUILDINGS / BLDG MTLs.
SMITH POSTYARD
Hedge Post Delivery Available
JEFF SMITH
620-496-8956

Metal Panels & Accessories
THE VALUE LEADER. WE WON'T BE UNDERSOLD
CALL FOR CURRENT METAL PRICING
• DELIVERY AVAILABLE •
WESTERN METAL
Best Service
Louisburg, Kansas
1-800-489-4100

CALL TODAY: 785-336-2621

Tell them you saw it in Grass & Grain!

HORIZON FARM & RANCH REALTY, LLC
1-888-825-1199 // www.horizonfarmranch.com

AG LAND
*300 Ac +/- Creek Bottom Tillable/Pasture/Meadow/Hunting, 3 bed/2 bath Home, Multiple Outbuildings, Rural Water Tap near Princeton, KS. Call Michael!
*Investment Opportunity! 110 Ac +/- Tillable. Operator would like to sell & lease back. Glasco Area, Generous Returns. Call Ray!
*160 Ac +/- Tillable @ Waldo, KS. Call Clint!
*Price Reduced! 70 Ac +/- Tillable/CRP, Build Site on Blacktop S. of Abilene. Call Sam!
*160 Ac +/- Tillable S. of Marquette. Call Derek!
*65 Ac +/- Build Site by Rolling Acres Golf Course, McPherson. Call Lucas!
*240 Ac +/- Tillable N of Paradise, KS. Call Clint!
*480 Ac +/- Tillable, CRP, Pasture N of Solomon. Priced to sell!
*160 Ac +/- Tillable/Pasture NW of Solomon, Income producing with hunting potential
*95 Ac +/- Prime Tillable S. of Niles.
*90 Ac +/- Prime Tillable just West of Salina, UNDER CONTRACT!

AUCTIONS
*Upcoming Personal Property Auction - September 30th, Detroit, KS
*Upcoming Personal Property Auction - October 7th, East of Salina, KS
COMMERCIAL
*Business Building in Clifton, KS. Call Larry!

HORIZON HOMES
*New Listing! 113 S. 12th St., Salina, KS. 2 bed/2 bath Cozy Home. Call Derek!
*New Listing! 402 Arcadia St., Clifton, KS. 2 bed/1 bath Home on 6 Lots. Call Larry!
*214 Clifton St., Clifton, KS. 2 bed/1 bath in the heart of Clifton, KS. Call Larry!
*118 S. 3rd, Bridgeport, KS. 3 bed/3.5 bath Barndominium on 0.62 Ac +/-, Call Derek!
*40 Ac +/- Great Development/Building Site @ Junction City. Call Ray!
*2374 Milo Rd., Abilene, KS. 4 bed/2 bath & 45 Ac +/-, Nice Morton Building, Horse Barn, Fenced for Livestock!

VIEW HUNDREDS OF ACRES MORE ON OUR WEBSITE!
www.horizonfarmranch.com

Auction season is upon us!
Book your real estate auction today while rates are still stable and strong!
Ray/Broker
Ty Bryant (785) 366-0261

BUILDINGS / BLDG MTLs.

BALD EAGLE BARN WOOD
All your barn wood needs! 785-318-0259.

DIAMOND L SUPPLY
Dwight, KS
• 1.888.608.7913 •
785.482.3211

Metal Roofing & Siding

All Steel & Post Frame Buildings

Walk-doors, OH doors, Insulation, Livestock equipment, Scales, Miraco, Waterers, Bale Beds & Cakes Feeders, Protein Tubs

Delivery Available
Customers are #1

HARVESTING

CUSTOM HARVESTING available in northeast Kansas and southeast Nebraska. Corn and Soybean acres wanted. Call for pricing and questions: 785-294-1931.

EMPLOYMENT

ATTENTION: GRAIN Haulers with CDL's needed. Home nightly, wherever you are. Benefits, excellent pay, paid weekly. Call 785-476-5076.

HELP WANTED: FEEDER/ Equipment Operators/ Animal Care Positions at KSU Dairy Farm. Excellent benefits. Full and part-time. 608-692-9098.

LOCAL HVAC COMPANY looking for HVAC, Mechanic and Electrician technicians. Please call 785-537-2436 and ask for Kenny. Competitive pay and great benefits.

WANTED

WANTED: ROCK FENCE posts that Kansas is known for. 775-754-2609.

WANT TO BUY OLD ATVs, side by sides. Any condition. Pay cash. 620-382-6804.

COLLECTIONS OF OLD 70s-90s farming advertising snap-back hats and caps. Cash\$. 785-275-2428.

WANT TO BUY SALVAGE and non-running ATVs, snow-mobles, jet skis, and dirt bikes. Any condition, cash paid, will pick up. 402-469-2002.

GRASS & GRAIN CLASSIFIEDS

FOR ALL YOUR ADVERTISING NEEDS
785-539-7558

Fall turkey season suspended in Kansas due to population declines

Beginning this fall, Kansas will have no fall turkey hunting season due to declining populations at state and regional levels. The difficult decision was arrived at by members of the Kansas Wildlife and Parks Commission after hearing compelling recommendations from staff over the course of four public meetings.

"We've documented consistent declines in turkey populations over the last 15 years largely due to reduced production levels," said Kent Fricke, Kansas Department of Wildlife and Parks small game biologist. "These trends are not unique to Kansas. States across the mid-west and southeast have experienced similar patterns in turkey populations."

Though far fewer turkey hunters participate in the fall season than in the spring in Kansas, wildlife biologists said it remained an important component of overall harvest.

"The estimated statewide fall harvest of turkey was less than 500 birds in 2022," said Fricke. "While this is a small proportion of the statewide population, fall harvest is an additive source of mortality

for turkeys, especially when hens are harvested."

Over the past several years, commissioners have approved other preventative recommendations to reduce the impact of the fall season on turkey populations. In 2017, commissioners voted to reduce the statewide bag limit from four birds to one bird. In 2019, fall turkey season dates were reduced from Oct. 1 through Jan. 31 (123 days) to Oct. 1 through Nov. 10 (41 days).

But not all is lost. Staff continue working diligently to obtain as much data as possible in hopes of one day reversing declining population trends. One such example is a new research project set to begin in Kansas in January 2024 to examine wild turkey populations and ecology to inform state harvest and habitat management.

To learn more about turkey hunting in Kansas – including Kansas' all-new lottery draw for non-resident turkey permits and other regulation changes aimed at population conservation – visit ksoutdoors.com/Hunting then select "Turkey."

Transition conferences draw many in north-central Kansas

By Luke Byers, crop production agent, River Valley Extension District

The average age of the American farmer has risen over the past several decades, and many are beginning to wonder how to pass the torch to a new generation of farmers and ranchers. To help local agricultural producers begin to answer these questions, the River Valley, Central Kansas, Post Rock, and Phillips-Rooks Extension Districts, in collaboration with the Kansas State University Office of Farm and Ranch Transition, hosted the North-Central Kansas Farm and Ranch Transition Conferences. Over 140 participants from 40 communities in 15 counties took part in the events at four different locations across the region, at Clyde (Tuesday, August 22nd), Delphos (Wednesday, August 23rd), Beloit (Thursday, August 24th), and Phillipsburg (Friday, August

25th).

Dr. Ron Hanson, the Harlan Professor Emeritus at the University of Nebraska at Lincoln, shared his over 40 years of experience as the keynote speaker at each location. His focus, "Mapping Out a Plan to Keep Your Farm in the Family for Future Generations," brought to attention the need for farming families to have difficult conversations about death, inheritance, relationships, and the future of farming legacies that many are inclined to leave on the back burner until too late. Numerous anecdotes of Dr. Hanson's rich experience conveyed both the joys of successful transitions that improved the farm's role of prosperity and reconciliation, as well as the failed transitions where farms dissolved, and families were left penniless and bitter. Through careful discussion and dialogue with Dr. Hanson and the

other presenters, participants developed their understanding of how to ensure their farms' posterity endured.

Economists from the Kansas Farm Management Association (KFMA) also offered valuable insight into how current producers could transition their farm businesses in a tax-advantaged fashion. KFMA executive director Mark Dikeman, along with KFMA North Central Economists Bob Kohman (Abilene) and Will Feldkamp (Beloit) walked attendees through the discrepancies between income and capital gains tax rates, the importance of tax management over tax minimization, and how the business classification of the farm affects taxation during a transition.

While the down-home intimacy of agricultural producers with their farms may indicate otherwise, the movement of wealth, ownership, and management of Kansas farms is a process fraught with legal consequences. Local lawyers spoke on the topic of protecting these assets in transition for farm families and their prospective beneficiaries. Points included ranged from complicated questions, like positioning your estate plan to avoid the probate process, down to very simple yet obvious questions, like understanding what your living trust actually contains. Scott Condray and Ross Van Horn of Condray and Thompson in Concordia spoke at Clyde, Joe Aker of Hampton and Royce in Salina spoke at Delphos, James Johnson and Chantz Martin of Frasier, Johnson, and Martin in Beloit spoke at Beloit, and Shannon McDowell of Guaranty State Bank & Trust in Smith Center spoke at Phillipsburg.

Ashlee Westerhold, Director of the Office of Farm & Ranch Transition, and Kay Prather, Director of Kansas Agricultural Mediation Services, shared with attendees the free or low-cost resources available to farm families seeking assistance in transition. These include enrollment in the Kansas LandLink program, which confidentially connects landowners seeking to transition out of farming with unrelated parties seeking to begin farming, the Kansas State Farm Analyst program, which allows producers to have a financial analysis conducted for their farm for a one-time \$150 payment, as well as one-on-one consultations to discuss navigating the complex arena of farm transition planning.

If you have any questions about the proceedings of the North-Central Kansas Farm & Ranch Transition Conferences, or you would like to learn more about how to successfully transition your farm or ranch, please contact Luke Byers, the River Valley Extension District Agriculture and Natural Resources Agent at (785) 632-5335 or by email at lsbyers@ksu.edu

NEMAHA COUNTY, KANSAS REAL ESTATE AUCTION

THURSDAY, OCTOBER 26, 2023 — 10:30 AM

AUCTION LOCATION: ST JAMES PARISH HALL, 306 5th ST, WETMORE, KANSAS

PROPERTY ADDRESS: 2185 48th ROAD, WETMORE KS, 66550 * **118 ACRES IN ONE TRACT**
DIRECTIONS TO Property: From WETMORE, KS, 2 miles West on 9 Hwy to V Road, 1 mile North to 48th Road (Property Lays On NW Corner Of V & 48th Road).

PROPERTY WILL SELL TO THE HIGHEST BIDDER WITH NO RESERVE

LEGAL DESCRIPTION: Tract located in the SE ¼ of S33-T4-R14, Nemaha County, KS (Correct Legal To Appear On Deed).

THIS FARM HAS BEEN IN THE KRANZ FAMILY FOR NEARLY 60 YEARS. Howard & Marion took great pride in their farm while raising their children there. With the loss of Howard & Marion, the children have made the decision to sell this

farm to the highest bidder at auction. The property consists of a farmhouse built in 1925, several older outbuildings, with the balance being in grass pasture & hay ground. There are 4 small ponds on the property along with a well (current status unknown). Exterior & cross fences are in fair condition. Property will sell by the acre X 118 Taxable Acres to arrive at sale price.

TERMS: 10% of sale price down day of Auction. Buyers will be required to sign a Real Estate Sales Contract Day of Auction. Closing shall be on or before December 7, 2023, with balance due in certified funds at closing. POSSESSION will be at closing. Sale will not be subject to buyer financing. 2023 taxes will be prorated to the day of closing based on the 2023 taxes. 2022 taxes were \$813.46. Seller's Title Policy Fee and Closing Fee will be split equally between buyer and seller. Any inspections the Buyer deems necessary will be paid for and ordered by Buyer. **Harris Real Estate & Auction, LLC and its agents are representing the Seller.** Property will sell as is, where is, in its present condition with no warranties or survey provided by sellers or auction company. ALL ANNOUNCEMENTS MADE SALE DAY TAKE PRECEDENCE OVER ANY PRINTED OR ONLINE MATERIAL.

KRANZ FAMILY IRREVOCABLE GRANTOR'S TRUST

DENNIS KRANZ & SANDRA HUTFLES, CO-TRUSTEES

Auction Conducted by: HARRIS REAL ESTATE & AUCTION, LLC, HOLTON, KS

DAN HARRIS, BROKER & AUCTIONEER 785-364-7137

Holton Livestock Exchange, Inc./Harris Real Estate: 785-364-4114

www.holtonlivestock.com/harrisrealestate

ESTATE AUCTION

SATURDAY, SEPTEMBER 30, 2023 * 10:00 AM

LOCATION: 12520 School Creek Road, SAINT GEORGE, KANSAS 66535

Directions: Turn North on Blackjack Road off of Highway 24 and proceed approximately 1.1 miles to School Creek Road, Turn East (right) on School Creek and proceed .2 miles to the auction on the South side of the road.



Items Offered for Sale: Hay ring, steel fence panels, fence gates, wolf shadow cutout, taxidermy ducks, Western artwork, gumball machine, miscellaneous glassware, microwave, end table, pet grade HART vacuum cleaner, dropleaf table, multiple duck prints and paintings, suede loveseat, suede recliner, table lamps, flat screen TV, water buffalo sculpture, coffee table, wall clocks, window unit air conditioner, miscellaneous household, Native American type items, leather gunbelt, cowboy hats (Stetson, Resistol & more), leather belts, equestrian helmet size 7-1/8, longhorn horns, Central State Bank Hutchinson KS bag, wrist watches, Bushnell binoculars, dream catchers, mirrors, Western & folk art, laundry baskets, pool cue, dressers, bed frames, fans, walkers, rolling walkers, duck decoys, sheep hide, luggage, Erector set, shower chair, miscellaneous tools to include wrenches, power tools, sockets & more, leatherworking tools, hand saws, McCall's cabinet, vintage steel lawn chairs, ladders, metal trashcans, pickup truck toolboxes, STIHL MS170 chainsaw, Echo weedeater, 2 John Deere mowers, extension cords, Poulan chainsaw, air compressor, lawn chairs, bicycles, vintage Coleman cooler, hydraulic cylinder, **many more items not listed!**

NOTE: Join us Saturday, September 30th for a large variety of items ranging from tools to ranch supplies and everything in between! For Terms See Website.

SOLD IT YOUR WAY!
Morgan Riat AUCTIONS
with Foundation Realty
MORGAN RIAT,
REALTOR/AUCTIONEER
785-458-9259
email: morgan@foundationks.com

FOUNDATION REALTY
210 N. 4th St., Suite B,
MANHATTAN, KS

SELLER:
THE WILLIAM ROBERSON ESTATE

Visit us at www.foundationks.com
for more details & pictures!

AUCTION

SATURDAY, SEPTEMBER 30, 2023 — 10:00 AM

Morris County 4-H Building, 620 Hwy. 56 * COUNCIL GROVE, KANSAS

DIRECTIONS: 1 mile East of Council Grove on US Hwy 56. WATCH FOR SIGNS

TRACTORS & VEHICLES:
AC 180 diesel, good rubber, 500 hrs. on overhaul, shedded, good condition; AC 170 gas, runs good 4630 hrs. 500 hrs. on overhaul, with quick tach West-endorf loader with 6ft. bucket, good condition; Farmall 450 with loader; 1996 Dodge 1500 extended pickup, V-8, auto, 144,007 miles runs good; 2000 Toyota Corolla 4dr., 4 cyl., auto, AC, 180,200 miles, runs good.
GUNS: Winchester Md. 94 30-30 lever action rifle, saddle gun; 2 Ruger model 10/22 22 LR rifles., Hawke scope, bull fluted barrels, pistol grip stock, 1 left handed grip & 1 right handed grip; Winchester Howa Md. 1500 .243 rifle with Mikko Stirling 3-10x42 scope; Remington Wingmaster Md. 870 12 gauge shotgun; Savage Arms KOFs Turkey 20 gauge over/under shotgun; Ruger .22 cal

LR Mark III pistol; Daisy Red Ryder Md. 1938B 650 shot BB Gun Repeater; pellet air pistol; 2 barrels & stocks for Ruger 10/22 rifles All these guns are in excellent cond.

UTV & ATVs: Arctic Cat Wildcat 1000 side/side; Kawasaki 360, 200 hrs; Arctic Cat 250, like new; Honda Four Trax 250, all in excellent cond.

EQUIPMENT, TOOLS & MISC.:
Behlen 5ft. 3pt. tiller, like new, excellent condition; King Kutter 6ft. 3pt. rotary mower, good condition; JD 24 T sq. baler, used this year, new twine; 16ftx5ft. flatbed bumper pull trailer, tandem axles, new tires, excellent condition; 12ft.x4ft. trailer single axle, good condition; lawn trailer; JD 10ft. grain drill; HD 8ft. 3pt. blade; NH 3pt. bale carrier.; 2 16ft. hay racks, good condition; Wheel Horse lawn tractor, new engine; Da-

nuser 3pt. post hole digger, 12" & 9" bits; pickup animal rack; Cub Cadet weed eater; Poulan 5.5 hp. tiller; Husqvarna 18" 445 chainsaw; Husqvarna 16" 51 chain saw; Stihl 14" 180c chainsaw; Stihl pole saw; Remington 110v chain saw; Lincoln AC 225 Arc Welder; Clarke wire welder; various items; cutting torch; Makita chop saw; Delta drill press; tap & die sets; Makita sawsall; Hilti rotary drill; bearing puller; air tools; Delta band saw; Honda power washer; belt sander; Roto Zip; Craftsman table saw; Pancake air compressor; tile saw; contactor propane shop heater; cider press; (2) 15 gallon ATV sprayers; level & transit; log chains & boomers; saddle and tack; traps; Hova-Bator incubator; numerous other tools & shop items.

STEVE & CLAIRE ZERBE

For pictures go to:
hallgrenauctions.net
Terms: Cash or Good Check. Not Responsible for Accidents. Statements made day of auction take precedence over printed material.
Lunch Available.

HALLGREN

REAL ESTATE & AUCTIONS, LLC

ALTA VISTA, KANSAS • 785-499-5376
GREG HALLGREN JAY E. BROWN
785-499-2897 785-223-7555
e-mail: ghallgren@live.com
www.hallgrenauctions.net • KSALink.com

AUCTION
Saturday, October 7th, 2023 @ 9:00am
Where: 208 N Kipp Rd. Salina, KS
Just North of E. Country Club Rd.

Farm Equipment/Supplies/ Trailers - 16 ft stock trailer • 2000 Turbo Volkswagen beetle 214,000 miles • John Deere 6300 tractor 3,620 hours • 3 point auger with 8 and 12 inch auger drill attachment • Tin (approximately 30 count) • Miscellaneous tee posts and fencing supplies • Electric fence wire and posts • Pull behind sprayer with drop arms • Round bale feeder • Pull type swather • 16x6 car trailer • 4x6 stall mats • Massey Ferguson 130 Baler • John Deere 510 Baler • Haybine 479 Pull type swather • Aries lawn tractor w/ mower, snowblower and tiller • Oliver side delivery rake • Four telephone poles, long bridge planks • 3 point bale spear • Sheep stand • Hanging horse feeders • Chicken cubbies • Rabbit hutches and one stand • Small animal feeders • RB3584 land pride blade • Spring tooth harrow • Aged box drill • Fencing wire roller • 30 gallon pull behind sprayer • 6ft 3 point attachment blade • Chain link fence dog panels • Miscellaneous cattle/ horse panels • Miscellaneous wire • Miscellaneous vinyl fence materials • Air compressor • riding saddle •

Lawn and Garden - Flower wagons • Fertilizer spreader • Manure spreader • 3 push mowers (INR) • Multiple weed eaters (INR) • Animal hutches/traps • Rakes, shovels and miscellaneous lawn tools • Railroad ties (8 bundles) • Metal and plastic barrels •

Shop equipment/Misc. - Shop Smith with band saw attachment • Delta band saw • Craftsman jointer planer • Performax products 16-32 Plus Surface Sander • Engine stands • Shelving supplies • Refrigerator • • Miscellaneous shop supplies •

Household items - • Bulk picture frames • Love seat • Couch • Office chair • Entertainment center • Living room chairs (pair) • Air hockey table • Medical weight scale • Console Antique record player • Fish tanks • Miscellaneous exercise equipment • 4 Drawer File cabinets • Oversized metal locker •

Seller: Jerry & Coleen Seim

Auctioneer: Byron Bina (620)-338-6378

Auction Coordinator: Creighton Mallory (785)-404-9281

Broker: Ray Swearingen (785)-452-8498



SCAN ME



HORIZON

FARM & RANCH REALTY, LLC

1-888-825-1199

www.horizonfarmranch.com

K-State's Ifft casts view of Barry Flinchbaugh Ag Policy Chair

By Pat Melgares, K-State Research and Extension news

Fraught with the challenges of weather, fluctuating commodity prices, global markets and more, farming tests even the most resilient of souls.

That's not something lost on Kansas State University agricultural economist Jenny Ifft, whose daily work spins around finding solutions.

"As an agricultural policy economist," she says, "I want to help producers, stakeholders, policymakers and others to get the best research available to make important decisions."

Ifft is the university's Flinchbaugh Agricultural Policy Chair, a position that aims to uphold the legacy of a man well-known in state and national circles for his contributions to agricultural policy.

"Anybody that ever met Barry Flinchbaugh once will never forget him," Ifft said. "He was a great storyteller, and he was great at clearly explaining concepts in agricultural poli-



Jenny Ifft is the Flinchbaugh Agricultural Policy Chair at K-State.

cy in ways that his students could really remember it." Flinchbaugh passed away in 2020, having taught agricultural policy to K-State undergraduate students for 49 years. His work included leadership on several U.S. Farm Bills, and he was highly skilled at networking with state and national legislators from both major political parties.

"He was a strong supporter of Kansas agriculture as well as people who lived in rural areas," Ifft

said. In mid-August, K-State announced the creation of the Barry Flinchbaugh Center for Ag Policy to showcase the university's commitment to farmers and ranchers in Kansas and the U.S.

Though it's affiliated with K-State, "The Center is a free-standing organization... that will work with stakeholders to identify innovative solutions to current and future challenges facing our agricultural communities," according to Ifft.

While the Flinchbaugh Agricultural Policy Chair is not directly associated with the Center, Ifft says she will have close ties to

the work being done there and serve in an ex-officio role in the Center's leadership.

"In the coming year, I'll be working with the Center to form an advisory board for the Chair," Ifft said, noting that undergraduate education is a priority area.

"We have an outstanding program at K-State called the Flinchbaugh Food and Agricultural Policy Fellowship that places Kansas students in a state organization and gives them a work experience with an option to eventually work in Washington, D.C.," Ifft said.

Through the state's Extension network, Ifft said

she will also be involved in providing updates on agricultural policy to various groups in Kansas - much of the work based on what's being learned at K-State.

For example, Ifft said, "I'm trying to understand the effectiveness of forage safety net products, some of which are quite new. And I'm studying how often and why farmland turns over in Kansas, which has a lot of policy implications. I'm asking questions about how effective it is to use crop insurance to target the adoption of conservation practices."

"I'm trying to make sure the research I conduct myself and with colleagues

continues to be focused on the current and future challenges of farmers."

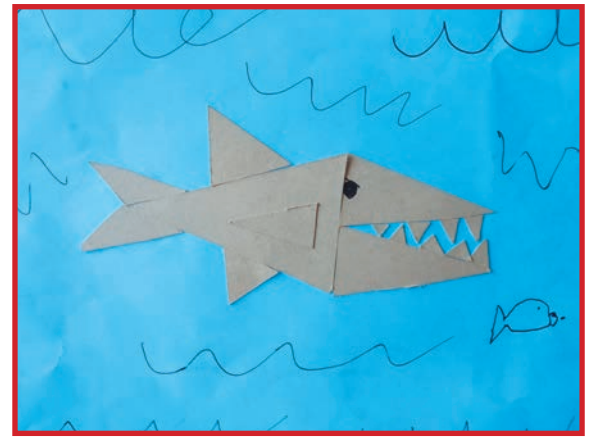
Ifft can be reached at jiff@ksu.edu. K-State's Department of Agricultural Economics also routinely posts updated reports on numerous issues on its Ag-Manager website, <https://agmanager.info>.

Place your Classified Ad ONLINE today at: **GRASS & GRAIN**
785-539-7558
grassandgrain.com

Kid's Corner Feature

Send in a completed Kid's Corner page/craft, picture of a completed page/craft, OR a picture of your kid working on a Kid's Corner page/craft for a chance to be featured in the paper or on social media!

THANK YOU Samuel R. from Alma for sharing your Shark with us!



The shark craft template was published in the Aug. 8th edition of Grass & Grain

Photos, crafts, and pages can be mailed to: P.O. box 1009, Manhattan, KS 66502

Photos can be emailed to: gandgclass@agpress.com

OR Send them to us on Facebook or Instagram

Please include your name and city with submissions, and any other info you want shared about your submission. Photos sent may be published in the paper and online editions of Grass & Grain, as well as to our social media accounts.

RICHARD LOWRY ESTATE AUCTION
SUNDAY, OCTOBER 1, 2023 • 1:00 PM
1062 Road 270, EMPORIA, KANSAS
North of Emporia on Highway 99, then merge to Road L to 270 & West 1/2 mile

COLLECTIBLES
Railroad collectibles include padlocks, pocket watch, large datenail collection, brass fire extinguisher, battery lanterns, keys; Wooden AC thermometer; cherry pitter; Tonka toys; John Deere toys; Victorian marble insert dresser; Victrola and records; 20 Longaberger baskets; 7Up cooler; Peter Wright anvil; fancy cast iron bed frames; Maytag motor; pedal grindstone; Lots primitives; battery jars and lids; Whitely cast iron

seat; Bicycles; hay trolley; Beer can collection; Ammo boxes.

FARM EQUIPMENT
Ford 8N tractor, 3 pt. blade; Loader for Ford tractor; Allis Chalmers C?? in parts.

ANTIQUE VEHICLE PARTS
1949-50 Ford Cabs, frames; 1948 Ford pickup frame, seat, parts, flathead engine/trans.

MOTORCYCLE PARTS
1977 Yamaha 250; Suzuki 250, no engine; Yamaha 175 frame.

OUTDOOR & SHOP ITEMS
HOUSEHOLD/FURNITURE

Photos & Info at: www.hancockauctionandrealestate.com

HANCOCK AUCTION & REAL ESTATE
620.340.5692 PAUL HANCOCK, Auctioneer
TERMS: Cash, approved check, credit cards with 4% fee. Inspection day of auction, remove all items promptly!!

FARM & HOME AUCTION
SATURDAY, OCTOBER 7, 2023 * 10:00 AM
"Concessions Available"
AUCTION LOCATION: 2981 Paint Road, CHAPMAN, KANSAS

cream churn; end tables with lamps; floor Lamp; record player stand; John Deere umbrella; misc. yardsticks; John Deere decor & ornaments collection; JD & other manuals; upholstered rocker; sewing rocker; 1940's chrome dining table with blue top w/chairs (NICE); dining chair; copper boiler w/lid; cream separator; lg. scythe; hay hooks; Popeye "Walking Man" toy; glass insulators; 1930's metal ice skates; 30's & 50's toys & games; lg. floor lamp & others; high chair; Coca Cola & other pop crates; children's red & white table w/ 4 chairs; car tags; cream cans w/lids; egg baskets; Coleman cooler; JD steel seat.

OTHER HOUSEHOLD: Newer washer/dryer set; new bedroom set, 2-piece; like-new, full size box springs and mattress, excellent condition; oak 3-piece bedroom set; piece box springs and mattress, excellent condition; dining set w/leaves & chairs; hutch; deep freeze; microwave; John Deere shop vac ; lg. heavy duty metal shelf; storage cabinets; newer gray sofa; electric recliner (like new); sofa bed, plaid; recliner; chest of drawers (2); antique 3-piece bedroom set; Barrister bookcase; 60's metal dining table w/leaves (brown); cedar chest; Lane mahogany cedar-lined chest w/retractable shelf; wardrobes cabinet(s); refrigerator; Singer (all metal) sewing machine; Unique farm antiques of many sorts; Multiple plant stands and shelves; card table w/4 chairs; glass front bookcase (black); hats & caps; lg. upholstered swivel occasional chair; upholstered occasional chair; secretary chair; Rainbow vacuum; ironing board; paper shredder; arm chairs(2); sm. dropleaf dining table; microwave stand w/casters; floor & table lamps; clothing rack; wicker planter; canning kettles (granite-ware); canning pressure cooker; step ladder; dehumidifier (newer); walker (new); Christmas tree; step stool; bedside table; sump pump-new; **TOO MANY ITEMS TO MENTION!!**

MISC: Vintage Cushman cart; Steel yard chair; ammo boxes; tomato cages; live traps; dog box; galvanized tubs & buckets; old lawn mowers; t-posts (new); ramps; Troy-built tiller; electric fence posts; gates; trim lumber; wood ladders; stock racks; fishing poles; step ladder; turkey decoy.

TRUCKS, CARS: 2000 Chevy LS 2500 truck (4x4, 69K miles); F-600 grain truck (67,000 miles); Delta 88 Oldsmobile (rough); 1995 Chevy Kodiak 2-ton truck w/grain bed (115,200 miles); 1999 Buick LeSabre (216k miles); 1959 F250 truck; 1949 IH Truck.

TRACTORS & COMBINE: JD 4440 w/duals & cab (6952 hours); JD 40 (wide front); JD 70 (narrow front); McCormick Deering 10-20; JD 60 (narrow front); JD 4420 Combine (3000 hrs. w/14' header); Farmall H; JD 2510 w/GB loader (980 hrs.); JD 50; JD X300 riding mower.

FARM EQUIPMENT: Snyder Electro sprayer (55 gal); 100 gal. fuel tank w/pump; grain auger; JD 5-bottom plow; JD 450 drill; AT40 6-row cultivator; Kelly Ryan Feed-R-Wagon (PTO version); JD 4 row cultivator (3 pt); IH square baler-model w/ engine; JD RM cultivator; 3 pt Rhino post hole digger; JD 400 4 row planter; JD535 sprayer w/booms; 1000+ gal fuel tank w/pump; wood grain wagon; Flow EZ 1074 grain cart; hay wagon; JD hay/corn elevator; vintage equipment (rake, drill, one way disc); NH 3pt anhydrous applicator; small field cultivators (12-16"); 3 pt blade; rotary hoe; Hesston 5800 baler; NH495 haybine; JD single row silage cutter; Glencoe chisel disc (159127); JD630 20' disc; 6' rotary mower; drag harrow; JD 214WS square baler.

TOOLS, SHOP EQUIPMENT: Hand tools; yard sprayers; extension cords; 2700 psi power washer; misc. chains; vintage drill press; Puma 60 gal. air compressor; circular saw; Pacer water pump; misc. parts; handyman jack; Wright-Ratell anvil; air bubbles; chainsaws; battery charger; propane burner torch & lots of misc. items.

COLLECTIBLES, VINTAGE HOUSE ITEMS: Large vintage bassinet (good condition); Taylor Tot Stroller; Red Flyer Wagon; wooden wagon w/metal wheels; 1960's record player; railroad tie tongs; (working) ice

SELLER: ELDON & NELDA HOOVER TRUST

Watch for Kid's Corner every other week through the school year!

Did you know?
Most beekeepers try to do a final harvest of their honey before Labor Day. After that, they begin to prepare the hive - & bees - for the winter. Once it gets cold, the bees have to remain in the hive, so they need plenty of food to survive until spring.

Grab a pencil and a piece of paper. How many words can you make out of the letters in the honeycomb?

Bumble Bee Bookmark Paper Craft

Full instructions and templates found at: www.mommymadethat.com/bumble-bee-bookmark

MATERIALS

- Colored Craft Paper (white, black, & yellow used here, but use any colors you like!)
- Pencil
- Red or Pink Marker
- Black Marker
- Craft Glue
- Scissors (Use with an adult!)

Step 1: Preparing a square piece of paper in your desired bookmark base color. Cut it into a 10in by 10in square.

Step 2: Fold the square piece of paper in half along the diagonals, touching corner to corner.

Step 3: Fold the bottom left and right corners of the triangle to the top corner and unfold them again.

Step 4: Grabbing the top corner of the top layer of paper and fold it toward the bottom of the triangle.

Step 5: Fold up the bottom left corner completely toward the top corner.

Step 6: Fold in half, the folded part between the layers formed in step 4 like above:

Step 7: Now fold up and fold in the other side of the corner to complete your bee bookmark.

Step 8: Draw & cut out bee shapes from the craft paper, or print the template, trace it on the paper, & cut them out.

Step 9: Glue down the curved stripes onto your bookmark's body. Attach the bees antenna and eyes as well.

Step 10: Attach the bee's wings to either side of the body. You'll want to glue these down to the back side.

Step 11: Using the markers, add details to your bees wings and face. Then glue it to your corner piece.

Check us out on Facebook & Online for more info www.kscrossroads.com
www.facebook.com/KScrossroadsauctions

Crossroads Real Estate & Auction LLC
BILL DISBERGER, Auction Coordinator, 620-921-5642
ANDREW SYLVESTER, Auctioneer, 785-456-4352
TERRI HOLLENBECK, Broker/Owner, 785-223-2947

SCAN ME



2023 CLAY COUNTY FAIR LIVESTOCK GRAND AND RESERVE CHAMPIONS



Grand Champion Market Steer and Grand Champion Beef Carcass- Sarabeth Martin, Countryside Crusaders.



Reserve Grand Market Steer- Jenna Fickes, Washington Headliners.



Grand Champion Breeding Heifer- Kaley Chamber, Clay Center FFA.



Reserve Grand Breeding Heifer- Natalie Sleichter, Lincoln Creek.



Grand Champion Cow-Calf Pair- Anna Baxter, Countryside Crusaders.



Grand Champion Second Year Bucket Calf- Brayden Speltz, Countryside Crusaders.



Reserve Grand Champion Second Year Bucket Calf- Gracie Speltz, Countryside Crusaders.



Grand Champion 7-9-Year-Old Bucket Calf- Holte Tadtiken, Lincoln Creek.



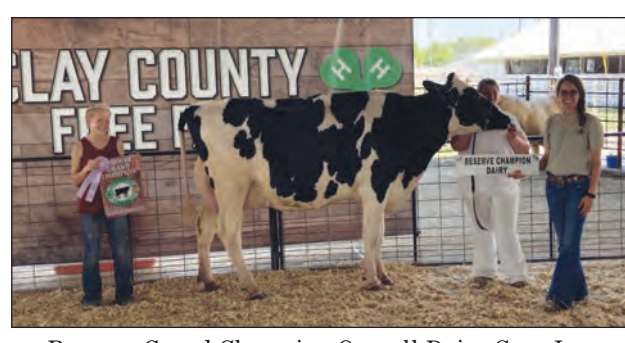
Reserve Grand Champion 7-9-Year-Old Bucket Calf- Will Pfizenmaier, Lincoln Creek.



2023 Clay County Fair Beef Showmanship Winners: Senior Grand Champ- Kaley Chambers, Clay Center FFA; Senior Res Grand- Sarabeth Martin, Countryside Crusaders; Intermediate Grand- Natalie Sleichter, Lincoln Creek; Intermediate Res Grand- Sierra Fengel, Sturdy Oak; Junior Grand- Brandy Sulanka, Sturdy Oak; Junior Res Grand- Anna Baxter, Countryside Crusaders. Judge Spencer Schrader of Wells, KS.



Grand Champion Overall Dairy Cow- Lauren Benfer, Sturdy Oak. Judge- Karl-Dawn Stover.



Reserve Grand Champion Overall Dairy Cow- Lauren Benfer, Sturdy Oak.



Grand Champion Dairy Calf- Janae Wohler, Washington Headliners.



2023 Dairy Cattle Showmanship Winners: Senior Grand Champion- Blaine Benfer, Sturdy Oak; Senior Res Grand- Lauren Benfer, Sturdy Oak; Intermediate Grand Champion- Janae Wohler, Washington Headliners; Junior Grand Champion- Kellen Speltz.



Grand Champion Market Hog- Sarabeth Martin, Countryside Crusaders. Judge Kade Hummel of Olsburg.



Grand Champion Breeding Gilt- Natalie Sleichter, Lincoln Creek.



Reserve Grand Breeding Gilt- Clara Girrens, Lincoln Creek.



Reserve Grand Champion Market Hog- Cooper Schwartz, Lincoln Creek.

THE FEED SHED

**318 Lincoln Ave.,
Clay Center, KS**
— 785-777-2600 —

HOURS:
Mon.-Fri.: 8 a.m. - 5:30 p.m.
Sat.: 8 a.m. - 2 p.m.

Like us on Facebook!

RILEY STATE BANK
RILEY & LEONARDVILLE 785-485-2811

FARMERS & MERCHANTS
State Bank

WAKEFIELD & LONGFORD
785-461-5434

PERSONAL, INTERNET & MOBILE BANKING

EQUAL HOUSING LENDER

MEMBER FDIC

Congratulations, local 4-H'ers!

SAPP BROS.

WELCOME, BE OUR GUEST

Formerly Home Oil Services

785-556-5938 • Blue Rapids, KS



2023 Clay County Fair Swine Showmanship Winners: Senior Grand- Sarabeth Martin, Countryside Crusaders; Senior Res Grand- Kelly Martin, Countryside Crusaders; Intermediate Grand- Natalie Sleichter, Lincoln Creek; Intermediate Res Grand- Cooper Schwartz, Lincoln Creek; Junior Grand- John Sleichter, Lincoln Creek; Junior Res Grand- Emmett Girrens, Lincoln Creek.



Grand Champion Breeding Ewe-Layton Schwartz, Lincoln Creek. Judge Bill Disberger.



Reserve Grand Breeding Ewe-Cooper Schwartz, Lincoln Creek.



Grand Champion Market Lamb- Cooper Schwartz, Lincoln Creek.



Reserve Grand Market Lamb- Scouten Baker, Countryside Crusaders.



2023 Clay County Fair Sheep Showmanship Winners:Senior Grand- Gentry Hartman, Countryside Crusaders; Senior Res Grand- Kaley Chambers, Clay Center FFA; Intermediate Grand- Cooper Schwartz, Lincoln Creek; Intermediate Res Grand- Scouten Baker, Countryside Crusaders; Junior Grand- Layton Schwartz, Lincoln Creek.



Grand Champion Overall Dairy Goat Doe and Grand Champion Age Dairy Goat Doe- Brandy Sulanka, Sturdy Oak. Judge- Bill Disberger of Wamego.



Reserve Grand Champion Overall Dairy Goat Doe and Reserve Grand Champion Aged Dairy Goat Doe- Sierra Stewart, Washington Headliners.



Grand Champion Junior Doe and Reserve Grand Champion Junior Doe- Sierra Stewart, Washington Headliners.



Reserve Grand Champion Breeding Meat Goat Doe-Lauren Benfer, Sturdy Oak.



Grand Champion Market Meat Goat and Grand Champion Meat Goat Rate of Gain- Clara Girrens, Lincoln Creek.



Reserve Grand Champion Market Meat Goat- John Sleichter, Lincoln Creek



Grand Champion Meat Goat Breeding Doe- Clara Girrens, Lincoln Creek.



2023 Clay County Fair Dairy Goat Showmanship Winners: Grand Champion Senior Dairy Goat Showman- Sierra Stewart, Washington Headliners; Grand Champion Junior Dairy Goat Showman- Brandy Sulanka, Sturdy Oak.



2023 Clay County Fair Meat Goat Showmanship Winners: Senior Grand- Kelly Martin, Countryside Crusaders; Senior Res Grand- Lauren Benfer, Sturdy Oak; Intermediate Grand- Clara Girrens, Lincoln Creek; Intermediate Res Grand- Natalie Sleichter, Lincoln Creek; Junior Grand- John Sleichter, Lincoln Creek; Junior Res Grand- Emmette Girrens, Lincoln Creek



Reserve Champion Senior Horse Showman - Lauren Benfer, Sturdy Oak.



Grand Champion Horseless Horse- Bradi Hartman, Countryside Crusaders.



Grand Champion Gelding, Grand Champion Intermediate Horse Showman, Intermediate High Points- Judged Events- Neelly Taddiken, Lincoln Creek.



Reserve Grand Champion Gelding- Sierra Stewart, Washington Headliners.



High Points Intermediate- Times Events- Sierra Fengel, Sturdy Oak.

CONGRATULATIONS TO THE LOCAL 4-H PARTICIPANTS!

 www.BrunaImplementCo.com

HARRIS CROP INSURANCE, LLC
We are a farmer owned agency serving Kansas Farmers since 1981.
Specializing in Livestock Risk Protection
785-479-5593 or Toll Free 888-408-4787
1207 Hwy. 15 - Abilene, KS 67410
This agency is an equal opportunity provider
www.harrisdropinsurance.com





Grand Champion Senior Horse Showman and High Points Senior- Judged Events - Allison James, Lincoln Creek.



Grand Champion Pony- Emmett Girrens, Lincoln Creek.



High Points Senior- Time Events- Chayla Maichel, Lincoln Creek.



Grand Champion Mare, Reserve Grand Champion Junior Showman and High Points Junior- Timed Events - Briscoe Lehman, Washington Headliners



Reserve Grand Champion Mare, Reserve Grand Champion Intermediate Horse Showman- Slade Griffiths, Lincoln Creek.



Grand Champion Mule - Brandy Sulanka, Sturdy Oak. Brandy also earned Grand Champion Junior Horse Showman and High Points Junior-Judged Events.



Reserve Grand Champion Mule - Addison Willis, Lincoln Creek.



Grand Champion Overall Poultry- Gentry Hartman, Countryside Crusaders.

Herington LIVESTOCK COMMISSION Co.

CATTLE SALE EVERY WEDNESDAY: 12:00 PM

Results for September 13, 2023

— COWS / HFRTTS / BULLS —		Weight	Price Range
Cows:	1165-1695		\$104.50-115.00
Bulls:	2015		\$130.00
Heifers:	1080		\$130.00

— TOP STRINGS OF EACH CLASS —		HEAD	WEIGHT	PRICE
STEEERS	Marion	25 blk	564	282.50
	Marion	42 blk	680	262.50
	Chapman	4 Rwf	655	255.00
	Hillsboro	5 blk	655	246.00
	Herington	20 blk	847	245.50

Animal	Sex	Age	Weight	Price
Ramona	65 mix	883	245.00	
Chapman	20 blk	839	244.50	
Lincolnvill	57 mix	936	235.50	
Lincolnvill	56 mix	944	227.00	
Marion	13 blk	598	240.00	
Marion	11 blk	668	238.00	
Chapman	6 blk	643	236.50	
Chapman	20 blk	842	227.25	
Chapman	4 mix	810	220.50	

HEIFERS

EARLY CONSIGNMENTS SEPTEMBER 20, 2023

- 400 mostly blk off grass, 850-925#
- 70 blk strgs, home raised; long weaned; shots; 700-800#

SPECIAL SALES: 1ST WEDS. OF EACH MONTH

Manager: Tracy Ediger, 785-366-6645 * Barn Phone: 785-258-2205
 Seth Bartel, 620-382-7041 • Tate Becker, 785-258-4165
 Dave Bures, 402-766-3743 • Tim Wildman, 785-366-6152
 KFRM AM 550, Every Wed., 8:00 a.m. • www.HeringtonLivestock.com

Place your Classified Ad Online

www.grassandgrain.com

GSI GRAIN BINS

ALL SIZES AVAILABLE
 Hopper Bins Available
 FINANCING AVAILABLE

Harder AG PRODUCTS
 West Highway 50
 PEABODY, KANSAS 66866
 Phone 620-983-2158
www.grainbinsusa.com



Reserve Grand Champion Overall Poultry- Cooper Schwartz, Lincoln Creek.

JC LIVESTOCK SALES INC.

Wednesday Sale, Hogs NOON • Cattle 12:30 PM

Report from September 13th, 2023

Animal	Sex	Age	Weight	Price	
2	402	321.00	9	598	259.50
2	392	320.00	14	607	255.00
4	458	310.00	6	744	244.00
5	560	304.00	7	870	230.00
3	583	293.00	67	930	207.00
8	661	231.25	46	1086	189.00
21	750	264.00			
14	848	250.50			

HEIFERS

3	355	274.50			
6	405	272.00			
6	495	262.00			

TOP BUTCHER COW: \$114.50 @ 1,415 LBS.
TOP BUTCHER BULL: \$136.00 @ 1,730 LBS.
BRED COWS: \$2,075
PAIRS: \$2,150

EARLY CONSIGNMENTS FOR SEPT. 20

- 45 Red Ang & Ang strgs 450-600# o.c. 1 rd of shots
- 130 Ang X strgs & hfrs 400-600# o.c., 1 rd shots
- 10 Ang X strgs & hfrs 700-800# w.v. all summer
- 40 Ang X hfrs 600-800# w.v. all summer

SELL AT 12:30 (HOG DISPERSAL): • 2 breeding age boars • 30 mix pigs, 30-40 lbs.
 • 15 breeding age gilts & sows, some heavy bred **PLUS MORE BY SALE TIME!**

SPECIAL FALL CALF SALE #1 MONDAY, OCT. 2 @ 6:30

- 250 Ang X strgs & hfrs 450-650# pre-vac, off cow
- 130 Ang X strgs & hfrs 450-650# pre-vac, off cow
- 80 Ang X strgs & hfrs 450-650# pre-vac, off cow
- 200 Ang X strgs & hfrs 450-650# pre-vac, off cow
- 20 Ang X strgs & hfrs 500-650# pre-vac, off cow
- 20 Ang X strgs & hfrs 450-650# pre-vac, off cow
- 70 Ang X Red strgs & hfrs 450-600# pre-vac, off cow
- 50 Ang X strgs & hfrs 450-600# pre-vac, off cow
- 80 Ang X strgs & hfrs 475-675# weaned
- 7 blk X strgs 600-700# weaned
- 80 Ang hfrs 550-600# off cow, 1 rd shots

PLUS MORE BY SALE TIME!

Watch online with cattleusa.com (Tab J.C. Livestock Sales) Must register to bid.

If you need assistance in marketing your cattle please call & we will be happy to discuss it with you.

JUNCTION CITY, KANSAS • Barn Phone 785-238-1471
 Seth Lauer 785-949-2285, Abilene

CLAY CENTER LIVESTOCK SALES INC.

Cattle sales Tuesday, 11:00 AM.

Report from September 12th, 2023

Animal	Sex	Age	Weight	Price	
6	499	288.00	9	620	239.00
10	606	260.00	2	730	237.50
4	740	249.00	2	805	225.00
2	705	248.00			
4	827	239.00			

HEIFERS:

1	470	251.00			
4	642	246.25			

TOP BUTCHER COW: \$121.00 @ 1,690 LBS.
TOP BUTCHER BULL: \$130.25 @ 1,450 LBS.

SEE FACEBOOK PAGE FOR CONSIGNMENTS!

NEXT SHEEP & GOAT SALE SATURDAY, OCT. 7TH

SPECIAL FALL CALF SALE TUESDAY, OCT. 17TH

Special Alternative Animal Sale
 Saturday, October 21st • Sunday, October 22nd

Clay Center, Ks • Barn Phone 785-632-5566
 Clay Center Field Representatives:
 Tom Koch, 785-243-5124, Lance Lagasse, 785-262-1185

EMPORIA LIVESTOCK SALE CO.

Bonded & Insured

SALE EVERY WEDNESDAY IN EMPORIA, KANSAS AT 11:00 AM

620-342-2425 or 800-835-7803 toll-free • Fax: 620-342-7741

Date: 9/13/23; Total Head Count: 1,871
 COWS: \$75-\$125.00; BULLS: \$115-\$134.00

Animal	Sex	Age	Weight	Price
11 wf	373	309.00	8 blk	963@210.50
9 wf	447	284.00	9 blk	466@311.00
5 mix	395	271.00	10 mix	481@311.00
5 blk	422	274.00	11 blk	553@299.00
7 blk	443	274.00	8 bkbwf	511@298.00
6 wf	411	262.00	28 blk	554@297.50
5 mix	472	245.00	10 bkbwf	599@295.00
10 blk	574	264.00	15 blk	587@291.50
21 blk	541	260.00	5 mix	538@286.00
10 blk	556	260.00	5 mix	527@283.00
15 bkbwf	523	258.00	5 blk	566@280.00
6 mix	501	257.00	12 bkbwf	577@280.00
11 mix	532	250.25	10 mix	566@265.00
11 mix	570	250.00	6 bkbwf	552@260.00
11 bkbwf	567	249.00	19 mix	627@288.50
6 mix	563	248.00	10 mix	625@280.00
6 blk	522	245.00	11 blk	675@279.50
13 bkbwf	557	241.00	7 blk	668@277.00
5 mix	533	240.00	14 mix	620@275.00
47 mix	686	277.75	6 blk	651@275.00
48 bkbwf	613	266.00	11 mix	662@268.00
18 mix	636	260.50	5 blk	652@263.00
10 blk	630	260.00	5 blk	692@258.00
51 mix	675	257.50	23 mix	760@261.75
31 bkbwf	612	257.00	35 mix	765@261.00
8 bkbwf	716	254.50	55 mix	771@261.00
17 mix	719	253.00	28 mix	798@247.75
19 mix	755	251.50	7 mix	789@247.50
20 blk	724	248.50	5 mix	799@216.00
7 mix	721	248.00	15 mix	815@254.75
60 mix	761	248.00	29 mix	835@253.00
7 blk	763	243.00	8 blk	827@250.50
6 blk	783	237.50	21 bkbwf	875@247.00
12 bkbwf	770	236.00	7 mix	849@245.00
17 bkbwf	784	235.00	21 mix	840@243.50
6 mix	784	234.00	5 mix	898@236.00
10 mix	828	239.00	19 mix	890@235.50
62 bkbwf	815	237.00	13 mix	946@237.00
6 blk	840	236.00	16 mix	983@229.00
10 mix	817	235.00	26 bkbwf	995@229.00
13 blk	824	235.00	29 bkbwf	988@227.75
56 bkbwf	886	225.00	9 blk	1014@226.50
19 mix	919	225.00	8 mix	1043@223.50
			20 mix	1078@223.50

EARLY CONSIGNMENTS FOR SEPT. 20

- 45 blk strgs & hfrs, Dalebanks Ang genetics, 450-600#
- 25 blk strgs & hfrs, 3 wks weaned & worked, 450-700#
- 90 mix strgs, 750-850#

PLUS MORE BY SALE TIME!

THANK YOU FOR ALL OF YOUR CONTINUED SUPPORT! YOUR BUSINESS IS ALWAYS APPRECIATED!

For Cattle Appraisals Call:

BRODY PEAK, 620-343-5107 **GLENN UNRUH, 620-341-0607**
LYLE WILLIAMS, Field Representative, 785-229-5457
MATT REDDING, Field Representative, 620-364-6715
DALTON HOOK, Field Representative, 785-219-2908
 WIBW 580 - 6:45 A.M. Thurs; KVQE 1400 - 6:30-6:45 A.M. Thurs. & Fri.
To see more consignments go to: emporialivestock.com



KARL LANGVARDT
 Cell: 785-499-2945

MITCH LANGVARDT
 Cell: 785-761-5814

LYNN LANGVARDT
 Cell: 785-761-5813





Grand Champion Pen of 3 Poultry- Anna Baxter, Countryside Crusaders.



Reserve Grand Champion Pen of 3 Poultry- Lincoln Schnell, Countryside Crusaders.



Grand Champion Poultry Eggs- Weston Presley, Washington Headliners.



Reserve Grand Champion Poultry Eggs- Brandy Sulanka, Sturdy Oak.



2023 Clay County Fair Poultry Showmanship Winners: Junior Grand Champion- Anna Baxter, Countryside Crusaders; Junior Reserve Grand Champion- Kash Baumann, Washington Headliners.

New study identifies five types of consumers

According to an article on *Drovers*, Midan Marketing's latest meat consumer segmentation insight report identified key consumer-related insights.

Surveying a national sample of 1,300 U.S. adult consumers who had eaten and purchased meat or poultry in the past three months, Midan Marketing determined five new meat consumer segments and the percentage of consumers in each category.

The five consumer categories include:

- **Connected Trendsetters, 14 percent:** Defined by their connection – to the internet – these meat eaters are adventurous, love meat and are interested in trying new things, Midan details.
- **Claim Seekers, 24 percent:** Looking for claims – organic, humanely raised, grass-fed or raised without antibiotics. They are willing to pay more for products that meet their expectations.
- **Convenience Cravers, 17 percent:** Time is of the essence for these meat eaters – as there is

usually not enough time for a sit-down meal with meat and they find it hard to cook meat perfectly, Midan reports.

- **Committed Carnivores, 23 percent:** Found sitting down for family meals and cooking from scratch, their love for meat drives their decisions – not label claims or other statements. With 96 percent saying their entire family enjoys meat and 85 percent of them can't imagine giving up its taste, Midan says.
- **Classic Palates, 22 percent:** Defined by habit, this group is used to having meat in their meals and are likely to stick to what they know. However, 57 percent of this group feels meat is too expensive right now, leading some to only buy meat when it's on promotion or sale.



2023 Clay County Fair Senior Round Robin Winners: 1st- Sarabeth Martin, Countryside Crusaders; 2nd- Kelly Martin, Countryside Crusaders; 3rd- Kaley Chambers, Clay Center FFA; 4th- Jenna Fickes, Washington Headliners; 5th- Lauren Benfer, Sturdy Oak; 6th- Joni Begnoche, Countryside Crusaders.



2023 Clay County Fair Intermediate Round Robin Winners: 1st- Natalie Sleichter, Lincoln Creek; 2nd- Cooper Schwartz, Lincoln Creek; 3rd- Sierra Fengel, Sturdy Oak; 4th- Kale Hartman, Countryside Crusaders; 5th- Jenette Begnoche, Countryside Crusaders; 6th- Clara Girrens, Lincoln Creek.

Holton Livestock Exchange, Inc.

1/2 mile East of Holton, KS on 16 Highway
Livestock Auction every Tuesday at 11:00 AM
****STARTING TIME: 11:00 AM****

MARKET REPORT FOR TUESDAY, SEPTEMBER 12, 2023
RECEIPTS: 2344 CATTLE
FOR FULL RESULTS, VISIT OUR WEBSITE:
WWW.HOLTONLIVESTOCK.COM

STEERS	HEIFERS
18 blk FallsCity,NE398@370.00	8 blk bwfFallsCity,NE385@337.50
20 blk CamdenPLMO 458@341.00	8 blk char Troy 331@330.00
25 blk bwf FallsCity,NE491@338.00	13 blk bwfHighland 430@320.00
39 blk bwfHighland 500@332.00	11 blk FallsCity,NE 4402320.00
16 blk bwf CamdenPLMO 495@332.00	11 blk Everest 480@309.00
21 blk Everest 513@332.00	18 blk bwfDenton 451@308.00
26 blk bwfDenton 505@330.00	31 blk Denton 529@304.00
13 blk red Denton 532@321.00	26 blk bwfDenton 513@300.00
15 blk Hiawatha625@305.00	10 blk Centralia536@292.50
50 mix ValleyFalls 650@296.00	13 blk bwf CamdenPLMO 498@289.00
45 blk red Fairview 659@286.50	15 blk Everest 544@284.00
29 blk bwfDenton 605@286.00	55 mix Oskaloosa 555@283.00
12 bwf rwfMayetta 665@280.50	19 blk bwfHolton 615@277.50
19 blk DeKalb,MO 660@280.00	16 blk bwf ValleyFalls 609@276.00
22 blk bwfDenton 610@280.00	18 blk red Nortonville 620@267.00
10 blk Hiawatha729@277.50	23 blk Centralia638@264.50
21 blk bwf ValleyFalls 783@265.00	8 blk Goff 709@258.00
32 blk red Winchester 754@259.25	20 bwf rwfMayetta 696@254.50
19 blk bwf Sabetha 781@257.50	15 blk DeKalb,MO 724@253.50
24 blk DeKalb,MO 800@254.50	45 blk ValleyFalls 747@251.75
65 blk Sabetha 852@248.00	121 mix Corning 805@241.00
12 blk Soldier 870@247.00	

Fall Consignment Auction, Saturday, October 7

Starting time 9 A.M.
Dan Harris, Auctioneer & Owner • 785-364-7137
Danny Deters, Corning, Auct. & Field Rep • 785-336-1622
Dick Coppinger, Winchester, Field Rep. • 913-683-5485
Steve Aeschliman, Sabetha, Field Rep. • 785-284-2417
Larry Matzke, Wheaton, Field Rep. • 785-268-0225
Craig Wischropp, Horton, Field Rep. • 785-547-5419
Mark Servaes, Atchison, Field Rep. • 816-390-2549
Barn Phone • 785-364-4114
WEBSITE: www.holtonlivestock.com
EMAIL: dan@holtonlivestock.com

View our auctions live at "Imauctions.com"

**** ONLINE ONLY AUCTION ****
WILLYS JEEP, FARM & CATTLE EQUIPMENT NEAR ROSALIA
****ONLINE ONLY BIDDING ENDS**
MONDAY, SEPTEMBER 25, 2023 * 4:00 PM**
LARGE AMOUNT OF LIVESTOCK & HAYING EQUIPMENT, TRACTORS & TRAILERS INCLUDING: Vermeer 504H Round Baler * 1946 Jeep CJ-2A Willys * 1976 Case 730 w/Dual 340 Loader, Bucket & Bale Spike * 1976 John Deere 800 Swather * 10 Wheel Folding Rake * 2001 Travalong 24" Stock Trailer.
ITEM REMOVAL IS TUESDAY, SEPTEMBER 26 from 3-6 PM WEST OF ROSALIA, KANSAS * 10% BUYER'S PREMIUM
Visit our website for more details: WWW.SUNDGREN.COM
SUNDGREN AUCTION & REALTY
JEREMY SUNDGREN: 316.377.0013 * JOE SUNDGREN: 316.321.7112

Central Livestock
811 N. Main St.
South Hutchinson, Ks
www.centrallivestockks.com
Clint and Dalli Turpin ~ Owners
Office: 620-662-3371
Hay Auction- Every Tuesday at 9:00 a.m.
Cattle Auction- Every Tuesday at 11:00 a.m.
Sheep/Goat Auction- Every 3rd Saturday at 11:00 a.m.
Horse/Tack Auction- Every 2nd Saturday
September 16th - Sheep & Goat Sale
September 19th - Cow Sale
September 26th - Calf & Yearling Special
ALL WEIGH COWS & BULLS SELL AT THE END

MARYSVILLE LIVESTOCK INC.
Every Thursday at 12 Noon
1180 US Hwy. 77, P.O. Box 67, Marysville, KS 66508
Bob Holle, Manager • 785-562-1015
TO SEE OUR LATEST DETAILED MARKET REPORTS AND UPCOMING CONSIGNMENTS AND SPECIAL SALES
www.marysvillivelivestock.com
****CALF SALE****
THURSDAY, SEPTEMBER 21, 2023
* 350 black/Char steers & heifers, 400-600 lbs., V2
* 100 black steers & heifers, 400-600 lbs., V2, HR
* 44 black steers & heifers, 450-625 lbs., V, HR
* 41 black/bwf steers & heifers, 450-650 lbs., WV3, HR
* 45 bwf steers & heifers, 475-650 lbs., WV2, HR
* 20 black steers, 625 lbs., V2, HR
* 99 mostly black heifers, 700-800 lbs., WV2

FIELDMEN			
Jim Dalinghaus 785-799-5643 Baileyville, KS	Dave Bures, Auctioneer 402-239-9717 Odell, Nebraska	Jeff Cook 785-564-2173 Hanover, KS	Greg Anderson 785-747-8170 Waterville, KS
Trevor Lundberg 785-770-2271 Frankfort, KS	Taylor Schotte 785-268-0430 Marysville, KS	Bill Keesecker 785-410-6117 Washington, KS	

BELLEVILLE 81 LIVESTOCK SALES
Junction Hwys 36 & 81 Belleville, Kansas
CATTLE SALES EVERY FRIDAY • 9:30 AM
September 15 sale results:
SLAUGHTER COWS \$122.00 BULLS to 127.50

STEERS	599	285.00	385	282.50
309	330.00	607	286.00	412
328	311.00	649	279.00	451
338	317.00 (bulls)	718	274.00	463
453	305.00	863	254.00	555
486	300.00			550
518	299.00			601
595	284.00	343	291.00	622
594	289.00	362	283.00	974

NEXT SALE: FRIDAY, SEPT. 22
• 35 blk Red, 400# w.v. • 20 blk hfrs, 700# • 40 blk, 500-600#
PLUS MORE
Special Weaned Calf Sale FRIDAY, SEPT. 29,
PLUS UNWEANED CALVES. Watch web for listings & next week's edition here.
Auctioneer Ethan Schuette 785-541-1027
Fieldman Brad Gilliam, Washington, KS • 785-747-8170
For Market Reports, and Early Listings
Website: Belleville81.com
Barry & Angii Kort, Owners • 785-527-2258
Thanks for your business!

Don't Miss!
K-State Vet Clinic
by Dr. Matt Miesner
at the 3rd annual Grass & Grain Farm and Ranch Show!
Weds., Nov. 8 - 2:00 p.m.
NOVEMBER 7th & 8th
Opens 9 a.m. each day
Located in Manhattan, KS at the National Guard Armory
FREE Parking
FREE Admission
Find us on Facebook: [GGFarmShow](https://www.facebook.com/GGFarmShow)
785-539-7558

EL DORADO LIVESTOCK AUCTION, INC.
316-320-3212
Fax: 316-320-7159
2595 SE Highway 54, P.O. Box 622, El Dorado, KS 67042
Market Report - Sale Date 9-14-23. 2250 head
300-400 lb. steers, \$271-\$347; heifers, \$277-\$335; 400-500 lb. steers, \$280-\$329; heifers, \$264-\$303; 500-600 lb. steers, \$267-\$300; heifers, \$251-\$280; 600-700 lb. steers, \$259-\$288; heifers, \$246-\$264; 700-800 lb. steers, \$242.50-\$273; heifers, \$235-\$248.50; 800-900 lb. steers, \$235-\$254; heifers, \$225-\$235; 900-1,000 lb. steers, \$221-\$242. **Trend on Calves:** \$2-\$12 higher. **Trend on Feeder Cattle:** Feeder hfrs steady-\$3 higher; strs steady-\$2 higher. **Butcher Cows:** High dressing cows \$110-\$117; Avg. dressing cows \$100-\$109; Low dressing cows \$80-\$95. **Butcher Bulls:** Avg. to high dressing bulls \$116-\$130.50. **Trend on Cows & Bulls:** Steady to slightly softer on top end.
Some Highlights Include:

HEIFERS	STEERS
30 mix 410@281.00	4 blk 364@345.00
30 blk 482@283.00	3 blk 438@327.00
11 blk 546@271.00	36 blk 539@300.00
31 blk 560@273.00	37 blk 609@287.00
32 blk 578@279.00	41 blk 687@273.50
20 mix 636@264.00	31 mix 703@273.00
42 blk 649@261.50	39 blk 835@254.00
8 blk 698@257.00	16 mix 857@250.00
69 mix 764@243.00	21 mix 882@243.00
20 mix 813@235.00	113 mix 913@232.25
8 mix 851@232.00	60 blk 949@242.00
	52 mix 1013@230.00
	57 blk 1035@237.00

Next Sale: Thursday, September 21, 11 AM
Expecting Another Good Run!
• 50 mixed heifers, home raised, weaned 45 days, shots, 650-700lbs
• 80 mixed steers, home raised, weaned 45 days, shots, 725-750lbs
• 1 load black steers, 900lbs
GO TO OUR WEBSITE FOR DAILY CONSIGNMENT UPDATES
WWW.ELDORADOLIVESTOCK.COM
We welcome your consignments!
If you have cattle to consign or would like additional information, please call the office at 316-320-3212
Check our website & Facebook for updated consignments: www.eldoradolivestock.com
To stay up to date on our latest announcements you can "Like" us on Facebook

Josh Mueller Owner/Barn Manager (316) 680-9680	Van Schmidt Auctioneer/Fieldman (620) 345-6879
Seth Greenwood Asst. Barn Manager/Fieldman (620) 583-3338	Charly Cummings Auctioneer/Fieldman (620) 496-7108
Kyle Criger Fieldman (620) 330-3300	Brandon Fredrick Fieldman (620) 204-0841

Cattle Sale Every Thursday 11:00 AM



Schwieterman Market Outlook

A marketing commentary by Bret Crofts

The September supply and demand report has come and gone without much impact. Corn and soybean yields were cut as expected, but acreage adjustments and demand changes kept ending stocks at a very comfortable 2.221 billion for the corn and soybeans came in at 220 million, which failed to get anyone excited. The wheat numbers were very dull, since there were no changes to the U.S. numbers and ending stocks are still a burdensome 615 million bushels. World wheat numbers were a little bit friendly coming in about 7 MMT below expectations, but many analysts assume that increased to Russian production will eventually bring the stocks number back up.

As usual, there were more drone strikes in Russia and Ukraine, but it doesn't seem to impact trade flows. U.S. weather remains dry in a very large part of the Corn Belt and condition ratings are expected to make further declines, but that doesn't seem to be causing much concern either. The main thing that traders seem to be focused on is the slower

than desired demand pace for corn, wheat, and beans. The new multi-month highs in the U.S. Dollar Index do not help the export situation and traders are very aware of the normal inverse correlation between the Dollar Index and U.S. grain prices.

On the charts, the corn has gone nowhere for a month. It may go nowhere for another month, but in the immediate future the December contract is closer to a downside breakout than an upside breakout. A close below \$4.73 1/2 in the December contract would suggest "harvest pressure" is winning and there are further losses ahead.

Wheat looks as though it may have a bigger recovery. After Tuesday's recovery from the spike lower, wheat markets around the world have posted solid recoveries. The December KW has generated some pretty decent short term buy signals and the next major hurdle to clear is the \$6.15 1/2 level.

November soybeans closed below the 50-day moving average three of the five sessions last week, which is very concerning.

The normal harvest lows are still ahead of us and it looks like we may see more pressure in the market despite the likelihood of further production cuts. Unless we see a very quick recovery to negate last week's negativity, a move back to the \$12.80 level seems likely.

The cattle market had the bullish story of the week. Every live cattle and feeder cattle contract made a new high. Cash trade was firmer with trade in Kansas at \$183. That strength in the cash market was the main reason for the strength in the live cattle futures and the lack of strength in the corn, combined with the surging live cattle sent the feeder futures soaring.

It is impossible to say how high too high is, but it doesn't look like we have hit that level yet. Another firm week in the cash cattle market will mean another round of new contract highs.

Schwieterman, Inc. is a full service commodity brokerage firm. If you would like more information on commodity markets or our brokerage services, contact Bret Crofts at 800-272-9131,

www.upthelimit.com or bret@subell.net

This material has been prepared by a sales or trading employee or agent of Schwieterman, Inc. and is, or is in the nature of, a solicitation. This material is not a research report prepared by Schwieterman, Inc. Research Department. By accepting this communication, you agree that you are an experienced user of the futures markets, capable of making independent trading

decisions, and agree that you are not, and will not, rely solely on this communication in making trading decisions.

The risk of loss in trading futures and/or options is substantial and each investor and/or trader must consider whether this is a suitable investment. Past performance, whether actual or indicated by simulated historical tests of strategies, is not indicative of future results. Trading advice is

based on information taken from trades and statistical services and other sources that Schwieterman, Inc. believes are reliable. We do not guarantee that such information is accurate or complete and it should not be relied upon as such. Trading advice reflects our good faith judgment at a specific time and is subject to change without notice. There is no guarantee that the advice we give will result in profitable trades.

What wheat variety is best in Kansas?

By Maddy Rohr, K-State Research and Extension news service

Kansas State University has released a pair of publications that will help farmers with wheat variety selection, says Kansas State University wheat production specialist Romulo Lollato.

"There are many things to talk about when it comes to wheat variety selection and that will first depend on the location of the growers' fields," Lollato said. "Also, what's the cropping system, such as directly planting wheat on wheat, or wheat or soybeans. Or out in the west, they're (planting) after a fallow period or after corn."

Lollato also suggests considering wheat varieties based on seasonal management decisions, such as the grower's willingness to apply a foliar fungicide if needed, or the major weather or disease historical constraints in that particular farm.

"We have a few different publications that can help growers make that se-

lection, with the most recent one focused on dual purpose wheat variety performance," Lollato said.

Dual purpose is a wheat crop planted for not only grain production but also for cattle grazing. Lollato said it is planted earlier than a normal wheat crop and at a higher seeding rate.

"When considering dual-purpose varieties, we're looking at the forage production potential, the date of first hollow stem (how long can cattle graze in the spring), and the recovery potential from grazing stress," Lollato said. "There are other things that these growers may also consider such as resistance from diseases, high temperature germination sensitivity and acidic soils."

The K-State publication, Dual Purpose with Variety Performance Planning 23, measures those important traits for forage yield data.

"Weather is the major driver of forage yield and there were some varieties

that differed in terms of their fall forage," Lollato said. "And those varieties are outlined in-depth in the publication."

The second publication looks at coleoptile length of winter wheat varieties.

"Coleoptile is the first protective structure that comes out of the seed," Lollato said. "Every single variety that came through the variety trials was measured for coleoptile length in the laboratory."

It is important that the coleoptile is long enough to reach the surface. Lollato said after measuring all varieties, they were ranked from the shortest to the longest.

"If you're considering different varieties and are in doubt which one to choose, make sure that you are not going to plant deeper than you should for a given variety," Lollato said.

More information is also available from local Extension offices in Kansas.



130 Charolais Bulls
100 Angus Bulls
40 Copperhead Bulls
30 Angus Females
20 Charolais Females

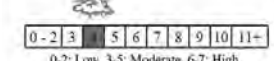
38TH BULL & FEMALE SALE
SATURDAY, OCTOBER 21 · 12:00 PM
Fink Sale Facility · Randolph, Kansas
Selling 270 Bulls, 18-months & yearlings DVAAuction
Selling Spring Calvers, Fall Calvers, Open Females, Angus Semen

3 Year Guarantee (feet, semen) · Complete BSE by 14 Months · Athletic, not fat
DNA · No Feet Trimming · No Grooming · Marketing Assistance
Volume Discounts · Free Delivery · No Reserve Prices

www.finkbeefgenetics.com
15523 Tuttle Creek, Randolph, Kansas 66554
Galen (785) 532-9936 · Megan (785) 410-5559
Barrett Broadie (620) 635-6128
finkbull1@twinvalley.net
Follow us on Facebook

Grass & Grain Weather Report

Sept. 20, 2023

Seven Day Forecast	In-Depth Local Forecast	Today's Local Outlook																																																						
WEDNESDAY Few Showers High: 81 Low: 61 THURSDAY Few Showers High: 80 Low: 62 FRIDAY Partly Cloudy High: 81 Low: 60 SATURDAY Cloudy High: 79 Low: 61 SUNDAY Few Showers High: 77 Low: 56 MONDAY Cloudy High: 75 Low: 57 TUESDAY Partly Cloudy High: 78 Low: 58	Today we will see mostly cloudy skies with a 35% chance of showers, high of 81°, humidity of 64%, South southeast wind 16 mph. The record high for today is 94° set in 2016. Expect mostly cloudy skies tonight with a 35% chance of showers and thunderstorms, overnight low of 61°. Last Week's Almanac <table border="1"> <thead> <tr> <th>Date</th> <th>H/L</th> <th>Normals</th> <th>Precip</th> </tr> </thead> <tbody> <tr><td>9/8</td><td>92/66</td><td>84/58</td><td>0.00"</td></tr> <tr><td>9/9</td><td>92/54</td><td>84/58</td><td>0.00"</td></tr> <tr><td>9/10</td><td>91/65</td><td>83/57</td><td>0.03"</td></tr> <tr><td>9/11</td><td>69/55</td><td>83/57</td><td>0.07"</td></tr> <tr><td>9/12</td><td>80/47</td><td>83/56</td><td>0.00"</td></tr> <tr><td>9/13</td><td>83/49</td><td>82/56</td><td>0.00"</td></tr> <tr><td>9/14</td><td>84/51</td><td>82/56</td><td>0.00"</td></tr> </tbody> </table> Rainfall 0.10" Normal rainfall 0.73" Departure -0.63" Average temp. 69.9° Average normal 69.9° Departure 0.0°	Date	H/L	Normals	Precip	9/8	92/66	84/58	0.00"	9/9	92/54	84/58	0.00"	9/10	91/65	83/57	0.03"	9/11	69/55	83/57	0.07"	9/12	80/47	83/56	0.00"	9/13	83/49	82/56	0.00"	9/14	84/51	82/56	0.00"	<table border="1"> <thead> <tr> <th>Location</th> <th>High/Low</th> </tr> </thead> <tbody> <tr><td>Washington</td><td>78/62</td></tr> <tr><td>Blue Rapids</td><td>79/60</td></tr> <tr><td>Seneca</td><td>79/60</td></tr> <tr><td>Clay Center</td><td>82/60</td></tr> <tr><td>Manhattan</td><td>81/61</td></tr> <tr><td>Wamego</td><td>79/61</td></tr> <tr><td>Ogden</td><td>81/59</td></tr> <tr><td>Junction City</td><td>82/61</td></tr> <tr><td>Abilene</td><td>82/60</td></tr> <tr><td>Council Grove</td><td>80/60</td></tr> </tbody> </table>	Location	High/Low	Washington	78/62	Blue Rapids	79/60	Seneca	79/60	Clay Center	82/60	Manhattan	81/61	Wamego	79/61	Ogden	81/59	Junction City	82/61	Abilene	82/60	Council Grove	80/60
Date	H/L	Normals	Precip																																																					
9/8	92/66	84/58	0.00"																																																					
9/9	92/54	84/58	0.00"																																																					
9/10	91/65	83/57	0.03"																																																					
9/11	69/55	83/57	0.07"																																																					
9/12	80/47	83/56	0.00"																																																					
9/13	83/49	82/56	0.00"																																																					
9/14	84/51	82/56	0.00"																																																					
Location	High/Low																																																							
Washington	78/62																																																							
Blue Rapids	79/60																																																							
Seneca	79/60																																																							
Clay Center	82/60																																																							
Manhattan	81/61																																																							
Wamego	79/61																																																							
Ogden	81/59																																																							
Junction City	82/61																																																							
Abilene	82/60																																																							
Council Grove	80/60																																																							
This Week's Sun & Moon Chart <table border="1"> <thead> <tr> <th>Day</th> <th>Sunrise</th> <th>Sunset</th> <th>Moonrise</th> <th>Moonset</th> <th>Last</th> </tr> </thead> <tbody> <tr><td>First 9/22</td><td>7:12 a.m.</td><td>7:27 p.m.</td><td>12:50 p.m.</td><td>10:16 p.m.</td><td>10/6</td></tr> <tr><td>Wednesday</td><td>7:13 a.m.</td><td>7:25 p.m.</td><td>1:58 p.m.</td><td>11:01 p.m.</td><td></td></tr> <tr><td>Thursday</td><td>7:14 a.m.</td><td>7:23 p.m.</td><td>3:04 p.m.</td><td>11:57 p.m.</td><td></td></tr> <tr><td>Friday</td><td>7:15 a.m.</td><td>7:22 p.m.</td><td>4:03 p.m.</td><td>Next Day</td><td></td></tr> <tr><td>Saturday</td><td>7:16 a.m.</td><td>7:20 p.m.</td><td>4:54 p.m.</td><td>1:03 a.m.</td><td></td></tr> <tr><td>Sunday</td><td>7:17 a.m.</td><td>7:19 p.m.</td><td>5:36 p.m.</td><td>2:18 a.m.</td><td>New 10/14</td></tr> <tr><td>Monday</td><td>7:17 a.m.</td><td>7:17 p.m.</td><td>6:10 p.m.</td><td>3:37 a.m.</td><td></td></tr> <tr><td>Tuesday</td><td></td><td></td><td></td><td></td><td></td></tr> </tbody> </table>			Day	Sunrise	Sunset	Moonrise	Moonset	Last	First 9/22	7:12 a.m.	7:27 p.m.	12:50 p.m.	10:16 p.m.	10/6	Wednesday	7:13 a.m.	7:25 p.m.	1:58 p.m.	11:01 p.m.		Thursday	7:14 a.m.	7:23 p.m.	3:04 p.m.	11:57 p.m.		Friday	7:15 a.m.	7:22 p.m.	4:03 p.m.	Next Day		Saturday	7:16 a.m.	7:20 p.m.	4:54 p.m.	1:03 a.m.		Sunday	7:17 a.m.	7:19 p.m.	5:36 p.m.	2:18 a.m.	New 10/14	Monday	7:17 a.m.	7:17 p.m.	6:10 p.m.	3:37 a.m.		Tuesday					
Day	Sunrise	Sunset	Moonrise	Moonset	Last																																																			
First 9/22	7:12 a.m.	7:27 p.m.	12:50 p.m.	10:16 p.m.	10/6																																																			
Wednesday	7:13 a.m.	7:25 p.m.	1:58 p.m.	11:01 p.m.																																																				
Thursday	7:14 a.m.	7:23 p.m.	3:04 p.m.	11:57 p.m.																																																				
Friday	7:15 a.m.	7:22 p.m.	4:03 p.m.	Next Day																																																				
Saturday	7:16 a.m.	7:20 p.m.	4:54 p.m.	1:03 a.m.																																																				
Sunday	7:17 a.m.	7:19 p.m.	5:36 p.m.	2:18 a.m.	New 10/14																																																			
Monday	7:17 a.m.	7:17 p.m.	6:10 p.m.	3:37 a.m.																																																				
Tuesday																																																								
Local UV Index 																																																								
Weather History Sept. 20, 1967 - Hurricane Beulah moved into south Texas and its torrential rains turned the rich agricultural areas of south Texas into a large lake. Hurricane Beulah also spawned a record 115 tornadoes.																																																								
Growing Degree Days <table border="1"> <thead> <tr> <th>Date</th> <th>Degree Days</th> <th>Date</th> <th>Degree Days</th> </tr> </thead> <tbody> <tr><td>9/8</td><td>29</td><td>9/12</td><td>13</td></tr> <tr><td>9/9</td><td>23</td><td>9/13</td><td>16</td></tr> <tr><td>9/10</td><td>28</td><td>9/14</td><td>17</td></tr> <tr><td>9/11</td><td>12</td><td></td><td></td></tr> </tbody> </table>			Date	Degree Days	Date	Degree Days	9/8	29	9/12	13	9/9	23	9/13	16	9/10	28	9/14	17	9/11	12																																				
Date	Degree Days	Date	Degree Days																																																					
9/8	29	9/12	13																																																					
9/9	23	9/13	16																																																					
9/10	28	9/14	17																																																					
9/11	12																																																							

Sell At St. Marys

Sell Or Buy Cattle By Auction STARTING TIME 10:30 AM Tuesdays

We sold 1824 cattle September 12. We had a nice run of spring calves for which there was good demand at higher prices. Feeder steers and heifers were steady with those under 850 pound selling \$3.00 higher. Cows and bulls were steady.			
STEER & BULL CALVES 2 blk bulls 198 @ 337.00 8 blk/bwf str 356 @ 329.00 1 blk str 415 @ 324.00 3 blk/char bulls 315 @ 324.00 1 blk str 390 @ 321.00 5 blk/bwf bulls 401 @ 320.00 4 blk/bwf str 411 @ 318.00 7 blk/bwf str 444 @ 315.00 8 blk str 481 @ 309.50 2 blk str 473 @ 306.00 3 blk str 538 @ 304.00 2 blk str 465 @ 300.00 3 blk bulls 402 @ 300.00 3 blk str 447 @ 296.00 2 blk str 520 @ 292.00 3 blk/red str 507 @ 289.00 3 blk/bwf str 548 @ 286.00 31 blk/wf str 542 @ 280.00	3 blk str 597 @ 280.00 8 blk/bwf str 622 @ 280.00 3 blk str 625 @ 280.00 3 blk/bwf str 665 @ 278.00 12 blk/bwf str 679 @ 270.50 13 blk str 667 @ 270.00 4 blk str 679 @ 267.00 5 blk/bwf str 683 @ 266.50 5 bwf str 664 @ 262.00 5 blk/bwf str 720 @ 262.00 13 blk str 713 @ 260.00 13 red str 726 @ 259.50 12 blk/red str 725 @ 258.00 47 blk/red str 792 @ 254.50 67 red str 822 @ 254.35 65 blk/red str 853 @ 248.50 61 blk/bwf str 892 @ 247.25 67 blk/red str 893 @ 243.50 124 blk/red str 921 @ 243.25 14 red str 790 @ 242.00 59 blk/bwf str 940 @ 241.00 150 blk/bwf str 931 @ 240.25 10 blk/red str 914 @ 237.75 123 blk str 980 @ 235.25 31 char/blk str 795 @ 225.00 61 mix str 986 @ 223.75	5 blk/char hfrs 320 @ 290.00 4 blk hfrs 354 @ 290.00 4 blk/bwf hfrs 375 @ 288.00 2 blk/bwf hfrs 423 @ 277.00 6 blk/char hfrs 455 @ 274.00 7 blk hfrs 487 @ 265.00 4 blk hfrs 513 @ 265.00 4 blk hfrs 539 @ 262.00 2 blk hfrs 418 @ 260.00 16 blk/red hfrs 498 @ 259.00 4 blk hfrs 548 @ 256.00 3 blk hfrs 485 @ 251.00 5 blk hfrs 472 @ 248.00	11 blk/red hfrs 688 @ 230.00 6 blk/bwf hfrs 803 @ 230.00 4 blk hfrs 636 @ 229.00 8 blk/red hfrs 737 @ 220.00 7 bwf hfrs 692 @ 217.50 13 blk/red hfrs 776 @ 210.00
STOCKER & FEEDER HEIFERS 54 blk hfrs 595 @ 261.25 2 blk hfrs 563 @ 256.00 4 blk hfrs 616 @ 253.00 12 blk/bwf hfrs 575 @ 251.50 18 blk hfrs 573 @ 250.50 30 blk/bwf hfrs 661 @ 250.00 10 blk hfrs 551 @ 249.00 4 blk/sim hfrs 566 @ 249.00 14 blk hfrs 606 @ 243.50 6 blk/bwf hfrs 615 @ 243.00 5 blk hfrs 608 @ 242.00 61 blk/char hfrs 747 @ 242.00 3 blk hfrs 580 @ 239.00 4 bwf hfrs 638 @ 237.00 6 blk hfrs 637 @ 236.00 13 blk/sim hfrs 668 @ 235.00 9 blk/red hfrs 574 @ 233.00	COWS & HEIFERETTES 1 blk hfrt 1180 @ 195.00 1 blk hfrt 1250 @ 192.00 1 bwf hfrt 1080 @ 170.00 1 blk hfrt 1260 @ 165.00 1 bwf hfrt 1320 @ 163.00 1 blk hfrt 1240 @ 160.00 1 blk hfrt 875 @ 152.00 1 wf hfrt 940 @ 140.00 1 blk hfrt 1155 @ 137.50 1 char hfrt 1135 @ 136.00 1 red hfrt 1020 @ 135.00 1 red hfrt 910 @ 134.00 1 blk cow 1705 @ 129.50 1 blk cow 1650 @ 127.00 1 blk cow 1590 @ 126.50 1 blk cow 1425 @ 125.00 1 blk cow 1670 @ 124.50 1 blk cow 1485 @ 124.00 1 blk cow 1560 @ 123.00 1 blk cow 1460 @ 122.00 1 bwf cow 1065 @ 120.00 1 red cow 1430 @ 119.50 1 blk cow 1445 @ 119.00 1 blk cow 1480 @ 118.00	1 blk cow 1295 @ 117.50 1 blk cow 1455 @ 117.00 1 blk cow 1445 @ 116.00 1 blk cow 1470 @ 115.00 1 blk cow 1285 @ 114.50 1 blk cow 1385 @ 111.50 1 blk cow 1340 @ 110.00 1 blk cow 1560 @ 109.00 1 blk cow 1155 @ 108.00 1 char cow 1340 @ 107.00 1 blk cow 1375 @ 106.00 1 char cow 1265 @ 105.00	1 blk cow 1425 @ 104.00 1 blk cow 1445 @ 102.00 1 bwf cow 1140 @ 101.00 1 blk cow 1325 @ 99.00
WATCH OUR AUCTIONS LIVE ON DVAAuctions.com			

Our CONSIGNMENTS can now be viewed after 12 Noon on Mondays by going to www.grassandgrain.com & logging onto the online subscription

FOR INFORMATION OR ESTIMATES:
 REZAC BARN ST. MARYS, 785-437-2785
 DENNIS REZAC ST. MARYS, 785-437-6349
 DENNIS' CELL PHONE 785-456-4187
 KENNETH REZAC ST. MARYS 785-458-9071
 LELAND BAILEY TOPEKA, 785-215-1002
 LYNN REZAC ST. MARYS, 785-456-4943
 REX ARB MELVERN, 785-224-6765

Livestock Commission Company, Inc.

Rezac St. Marys, Ks.

Toll Free Number.....1-800-531-1676
 Website: www.rezACLIVESTOCK.com
 AUCTIONEERS: DENNIS REZAC, REX ARB & JASE HUBERT