

Since 1954

# GRASS & GRAIN

AGRICULTURE'S LOCAL NEWSPAPER

Published by AG PRESS

69th Year

No. 35

October 31, 2023

\$1.00



## Grass & Grain to host third annual Farm and Ranch Show November 7-8 in Manhattan

Grass & Grain is excited to present the third annual Grass & Grain Farm and Ranch show to be held Tuesday and Wednesday, November 7 and 8 at the National Guard Armory in Manhattan. With over 45,000 square feet of exhibit space, you'll find the latest in agriculture products, technology and services from companies you know and trust, as well as new ones eager to earn your business.

"We're very excited about the variety of exhibitors we have coming," said Donna Sullivan, editor and publisher of Grass & Grain. "Most of last year's exhibitors are returning, and we've added a good number of new ones as well. Farm shows are a great place to visit face to face with companies you might not be familiar with and see what they have to offer first-hand. Fall harvest should be winding down, so it's also a chance to meet up with fellow ag producers."

You won't want to miss the special workshops



A wide variety of businesses will be set up at the third annual Grass & Grain Farm and Ranch Show November 7-8 at the National Guard Armory in Manhattan. Also featured will be several timely and informative workshops.

2022 Farm Show photo by Josie Bulk

held each day. On Tuesday at 2, the Kansas Grassland and Forage Council will present a 90-minute workshop with three rapid-fire presentations. Dr. Walt Fick, Kansas State University, Extension State

Rangeland Management specialist, will present "The latest information on Old World Bluestem Control." At 2:30 Dale Helwig, Cherokee County ag agent, will talk about "Cool-Season Pasture Recovery" and

at 3 Trent Page, Sales Manager-Star Seed Inc., will cover "What's My Plan for the Next Drought?"

That evening at 6 p.m., after the show closes, StoneX will have a risk management seminar. "Be-

cause of the important information StoneX has to share, we scheduled one session the first evening, so people could work, then come to the show in the late afternoon and stay for the presentation," Sullivan said. StoneX will repeat the seminar again on Wednesday at 10 a.m. Wednesday at 2 p.m. will feature a presentation by Dr. Matt Meisner of Kansas State University Vet Medicine.

Chef Alli will be there Tuesday morning at 10 for a fun, flavor-filled cooking demonstration.

One lucky attendee will win \$250 in Farm Show Bucks each day of the show, which can be spent at any of the exhibiting businesses. They are good until the end of the year.

FFA chapters from around the state are invited to attend and sign up for \$150 each day that will be drawn for and given to one attending chapter, sponsored by Rockin' S Ranch Supply. Grass & Grain is also partnering with FFA to host a food drive, with

the donated items being given to the Flint Hills Breadbasket in Manhattan and the Community Food Basket serving northern Riley County in Riley. Any attendee that brings a non-perishable food item will be given an additional Show Bucks entry.

No trip to Manhattan would be complete without Call Hall Ice Cream, and Grass & Grain staff will be handing it out free both afternoons at 1 o'clock.

Delicious meals will be available for purchase by Flyin' P Concessions and Vathauer Catering.

Be sure to stop by the Grass & Grain booth to renew your subscription or start a new one, and receive a free gift.

Show hours are 9 a.m.-6 p.m. Tuesday and 9 a.m.-5 p.m. Wednesday. Admission and parking are free. There's so much to see and do, you won't want to miss the Grass & Grain Farm and Ranch Show November 7 & 8 at the National Guard Armory in Manhattan.

## Where is the next breakthrough in agriculture coming from?

Where is the next breakthrough in agriculture coming from? The answer could be from the students who participated in the 2023 Wilbur-Ellis Innovation Award.

"The Innovation Award was launched as part of the company's 100th anniversary celebration in 2021. In the two years since the program began, 230 students have participated on 60 teams, bringing forward creative ideas to enhance agriculture and food production," said Wilbur-Ellis president and chief executive officer John Buckley. "Choosing the most innovative ideas from such a great collection is difficult. But this year, one idea was

particularly impressive – and that idea came from the Grain Science Team at Kansas State University, which received the Innovation Award's top prize of \$25,000." The team proposed:

- Increasing production of perennial crops. The KSU team made the case that perennial crops require less soil-intensive practices than annual varieties, and outlined how increasing production of perennials could promote soil health, biodiversity, carbon sequestration, water quality, and agricultural systems that can adapt better to climate change.

Four teams received

\$5,000 Honorable Mention awards for these ideas:

- Tapping the potential of halophytic algae to desalinate salt water. The Retriever Essentials Team from the University of Maryland, Baltimore County, outlined how this innovative approach could increase water supplies for agricultural production in coastal regions facing water scarcity.

- Using 3D biophysical crop models and Virtual Reality technology to help growers make better informed crop management decisions. The Helios Team from the University of California, Davis, outlined how greater use of this technology could im-

prove crop productivity, re-source efficiency and sustainability.

- Expanding production of mushrooms as a high-quality, economical source of protein, fiber and other nutrients. This idea was explored by the Controlled Environments Club at Iowa State University, which proposed growing mushrooms in highly controlled environments (like container farms), which could be especially beneficial in urban areas where land is limited.

- Increasing the diversity of pollinators, as well as expanding habitats and resources to help them flourish. The Kansas State University Entomology

Team focused not only on honey bees – which are essential food pollinators, supporting more than 80 crops – but also on other pollinators, including birds, bats and butterflies.

Congratulations to all the Innovation Award winners... your creativity is

an inspiration for everyone who cares about the future of agriculture. To learn more about the Innovation Award and this year's winners, visit <https://www.wilburellis.com/innovation-award/>.

## Alma Cheese Curds People's Choice winner of Coolest Things Made In Kansas contest

After six weeks of competition, the Kansas Manufacturing Council (KMC) last week announced Alma Cheese Curds is the winner of the 2023 Coolest Thing Made In Kansas - People's Choice.

"The KMC is excited to celebrate Alma Creamery's cheese curds as the 2023 Coolest Thing Made in Kansas. Thank you to everyone who nominated and voted for their favorite Kansas-made products. It has been a fun competition," said KMC Executive Director Brandie McPherson. "The manufacturing industry is an important part of the Kansas economy. The KMC launched the Coolest Thing competition as a way to promote the manufacturing indus-

try and to raise awareness about the many cool products made in our state."

Presented by FORVIS, the competition kicked off in August with 58 products. The 16 products who received the most votes in the nominating round moved on to the bracket-style tournament to compete in head-to-head match-ups. The product with the most votes moved to the next round. The final round put the final four Kansas-made products up against one another. The final four were:

- Alma Cheese Curds, Alma Creamery, Alma
- Cat 994 Large Wheel Loader Bucket, Caterpillar Works Tools, Inc., Wamego
- Plainscraft Covered Wagons, Plainscraft, LLC,

Topeka

- Vinyl Albums, Acoustic Sounds, Salina

Kansans cast more than 30,000 votes during the tournament and final round of voting.

Made in Alma at the Alma Creamery for more than 60 years, the milk used to make the curds comes from dairy farms in the Flint Hills.

The winner of the 2023 Coolest Thing Made in Kansas - People's Choice was announced during the KMC's Kansas Manufacturing Summit held at

the Hyatt Regency Hotel in Wichita.

There are nearly 2,500 manufacturers in Kansas, employing 170,000 people with an average annual compensation of \$79,722. Manufacturing produces more than \$28 billion in output annually, 15% of the total output in the state. Manufacturing helps drive the state's economy with more than \$9.93 billion in annual manufactured good exports to markets such as Canada, Mexico, and Japan.

## Doud to open KLA Convention

The featured speaker for opening night of this year's KLA Convention, November 29-December 1 in Wichita, will discuss highlights from his 30-year career in agricultural policy and provide insight into the beef and dairy export markets. Kansas native Gregg Doud will take the stage Wednesday evening during the Cattlemen's Banquet, sponsored by INTRUST Bank, Tyson Fresh Meats and Allflex Livestock Intelligence. Doud currently is the chief operating officer for the National Milk Producers Federation, but will become president and chief executive officer in January.

He earned undergraduate and graduate degrees from Kansas State University before embarking on a career that has included serving as the chief economist for NCBA and a senior staff member for the U.S. Senate Agriculture Committee that wrote the 2012 Farm Bill. Doud also was the chief agricultural negotiator in the office of the U.S. Trade Representative from 2018 until 2021. He will share his experiences from that time, including his trade discussions with China and work on the U.S.-Mexico-Canada Trade Agreement. Doud also will give his perspective on future trade opportunities for the beef and dairy sectors. His presentation is sponsored by Micro Technologies and Zoetis.

Members should be receiving convention registration information in the mail. Registration also is available online.

Rooms for the KLA Convention can be reserved by calling the Drury Plaza Hotel Broadview at (316) 262-5000 (group number 10010229) and Fairfield Inn and Suites Downtown at (316) 361-2107. Convention headquarters at the Hyatt Regency is sold out.

## Nearly 1,500 farmers and producers reject EPA herbicide strategy

Nearly 1,500 farmers, ranchers, pesticide applicators, and agricultural producers from across the country have come together to voice strong disapproval to EPA, criticizing the agency's Endangered Species Act herbicide strategy framework proposal. The agricultural producers, who called for withdrawal of the strategy in a letter sent to EPA,

expressed grave concern over the impacts it would likely have on U.S. agricultural production and conservation efforts.

The hundreds and hundreds of farmers and other individuals raised numerous issues with the proposal in the letter, including that it is very complex and makes it difficult for pro-

• Cont. on page 6

## Captivating beauty



In the Landscape category of the Ranchland Trust of Kansas photography contest, Callahan McIver of Council Grove took top honors with this stunning photo of a controlled burn.





## Driving to End Hunger

By Glenn Brunkow,  
Pottawatomie County  
farmer and rancher

Want to beat the Iowa State Cyclones when they come to town the end of November? If you bleed purple, I bet you do. This year you can personally be a part of that victory. Yes, the Wildcats might be a little short on the depth chart at linebacker, but I think most of our playing days are behind us. I have also volunteered to call plays in. Fortunately, our coaches are much too smart for that.

No, county Farm Bureaus, Farm Bureau Financial Services agents and Wildcat fans have the opportunity to work within their communities to gather food donations and participate in a friendly competition with other agents and county Farm Bureaus through the End Hunger Food Drive sponsored by Kansas Farm Bureau, Farm Bureau Financial Services and K-State athletics.

The food drive has already started and will run until Nov. 15, and everyone who participates will be a winner in my book. The counties and agents bringing in the most donations will receive tickets to the game along with other prizes.

All of the donations will go to local food pantries, helping our friends and

neighbors in need. I am so proud of our organization for all the work we do to feed those who do not have enough. We all take great pride in growing our abundant, safe, healthy food supply and yet we also want to make sure that everyone has access to it, too.

We do need to get busy. You can view participating counties by going to [www.kfb.org](http://www.kfb.org) and search "End Hunger Food Drive" to find drop off locations or make a monetary donation. After Nov. 16 non-perishable food donations will be weighed to determine the winners. Each dollar will add a pound to the total.

So here is the game plan. Some of you go straight to the grocery store and pick up some extra boxes of macaroni and cheese or cans

## Ag groups commend launching the Regional Agricultural Promotion Program to boost U.S. food and agriculture exports worldwide

Recently, the U.S. Department of Agriculture (USDA) announced its plan to use Commodity Credit Corporation (CCC) funds to create the Regional Agriculture Promotion Program (RAPP) - a \$1.3 billion program to assist agricultural groups in marketing their commodities overseas. In addition, and under the RAPP program, USDA will also provide \$1 billion in commodity-based international food aid.

"The Commodity Credit

of green beans and some muffin mix, too. The rest of you go deep and open up your computer, go the webpage and donate.

I know not everyone is a Wildcat but even if you are a Jayhawk or a Shocker you should want to send the visitors home without a victory. It's not just Cats versus Clones, it's an opportunity to help our fellow Kansans. I expect an overwhelming victory.

For those of you from Iowa, please don't take it too hard; we still like you, just not when you play against K-State. Well, that, and we don't like to lose. So here's to the competition, may the best team win! My prediction will be for a big score for our food pantries and that will be good for another Wildcat victory.

"Insight" is a weekly column published by Kansas Farm Bureau, the state's largest farm organization whose mission is to strengthen agriculture and the lives of Kansans through advocacy, education and service.

it Corporation continues to address the needs of American producers as significant and unpredictable challenges arise, including impacts to international commodities markets and global food insecurity in the wake of ongoing conflict and a changing climate," said Secretary Vilsack. "The Commodity Credit Corporation and USDA's market development and aid programs are critically important at this time, and with this additional sup-



As you are reading this, we are about one week away from the third annual Grass & Grain Farm Show. I sure hope you are planning to come - and bring your friends! We've spent the past year working hard to make the show the best it can be, and I truly believe you will deem it time well-spent. We're very excited about all the new and returning vendors that will be here. While it might not be the biggest show you will go to, it's definitely a quality show, and offers something for the whole family. Along with the vendors, the workshops we have lined up will provide very important information for your operation. And of course, Chef Alli will be there, which is always fun. Glenn Brunkow, Kirk Sours and Lou Ann Thomas are planning to spend some time in the columnist's booth, and we're hoping some of the others will, as well.

While you're there, be sure to look

me up and say "hi." I'll be the wild-eyed crazy lady running around like her hair is on fire. Just kidding... sort of. Truly, my staff is so amazing that things should be running smoothly and we should all have time to visit with you. We love hearing your thoughts on the paper and take your suggestions to heart. Making *Grass & Grain* and the Farm and Ranch Show the best they can be is very important to all of us, and we value your feedback.

Life is busy, I get that. But this is a chance to gather with your friends and neighbors and swap harvest stories, meet some really great exhibitors and see what they have to offer, and listen to a line-up of speakers that are truly interested in strengthening your operation. And did I mention the free ice cream? Oh yeah, there's free Call Hall ice cream every day at 1.

So come see us. We can't wait to visit with you.

port we can strengthen U.S. agriculture's presence in existing markets, open up new market opportunities, and build on our relationships and connections to ensure that high-quality American agriculture and food products reach where they are needed in the world."

In response to the announcement, the U.S. Grains Council (USGC) thanked the USDA:

"The U.S. Grains Council thanks Secretary Vilsack and the USDA for continuing to promote market development through providing a new program funding source," said USGC president and CEO Ryan LeGrand. "The success of the Council would not be possible without its partners in both the public and private sector, and we look forward to expanding exports of corn, sorghum, barley and their co-products with this new source of funding; however, there is still a need to increase long-term funding of the MAP and FMD programs in a new farm bill."

Like the Agricultural Trade Promotion (ATP) funds that were first distributed in 2019, RAPP funding from USDA's Foreign Agricultural Service (FAS) will supplement the Market Access Program (MAP) and Foreign Market Development (FMD) funds the Council relies on annually to help its members expand markets for grains in all forms and its international partners to serve their local consumers.

The National Association of State Departments of Agriculture also applauds Vilsack for establishing the Regional Agricultural Promotion Program to better promote America's food and agriculture products in demand across the globe.

"It's important to know that for every \$1 invested in export market development programs, \$24 is returned in export revenue. Simply put, this program is a win for farmers, ranchers and the American economy because it will increase income and create more American jobs in the farm and food sector," NASDA CEO Ted McKinney said. "This program will build upon the success of the Agricultural Trade Promotion Program, which is projected to generate \$6.44 billion in farm cash receipts and nearly 14,780 jobs annually."

U.S. Meat Export Federation (USMEF) president and CEO Dan Halstrom issued the following state-

ment following Vilsack's announcement:

USMEF thanks Secretary Vilsack and the staff at USDA for prioritizing international market development by making these funds available through the Commodity Credit Corporation. The USDA Market Access Program (MAP) and Foreign Market Development (FMD) Program have a proven track record of providing excellent, value-added returns to U.S. producers, and more recently the Agricultural Trade Promotion Program (ATP) helped U.S. agriculture overcome trade obstacles and develop new markets. With ATP funding coming to the end, new investments in foreign market development are very timely and much appreciated. We also thank Congressional leaders for their support of this program and for their continued support of MAP and FMD funding.

The National Milk Producers Federation (NMPF) and U.S. Dairy Export Council (USDEC) praised the announcement that the U.S. Department of Agriculture plans to devote \$2.3 billion from the Commodity Credit Corporation to promoting better market opportunities for U.S. agricultural producers and expanding food aid to support communities in need around the world.

The expanded export support program and food aid were requested by Senate Agriculture Committee chairwoman Debbie Stabenow, D-MI, and Ranking Member Sen. John Boozman, R-AR, in late August. USDA will devote \$1.3 billion to establishing a Regional Agricultural Trade Promotion Program, and \$1 billion to commodity-based international food aid.

"The U.S. dairy community is grateful for the USDA's decision to invest in supporting the cultivation of enhanced international market opportunities for America's dairy farmers and cooperatives. We thank Senators Stabenow and Boozman for their initiative in encouraging USDA to pursue this course of action," said NMPF president and CEO Jim Mulhern. "Now more than ever, the U.S. dairy industry relies on exports. If distributed to those sectors that are presently underfunded such as dairy, the new export promotion funding will put us in a better position to compete globally and grow our consumer base. NMPF en-

courages Congress to build on today's announcement by USDA to also deliver additional funding for the Market Access Program and Foreign Market Development Program in the development of the next Farm Bill."

NMPF, USDEC and other agricultural leaders are advocating for Congress to double funding for the Market Access Program and Foreign Market Development program - the two programs have not received a raise in over 16 years, despite offering consistent returns on investment.

"Farmers, manufacturers and workers up and down the dairy supply chain benefit from expanded trade opportunities that help the industry thrive in today's global economy," said USDEC president and CEO Krysta Harden. "We're thankful that USDA is taking this important step to support American Agriculture and appreciate Senators Stabenow and Boozman elevating the importance of using CCC resources to fund programs that will strengthen the U.S. dairy industry through the creation of new markets and the promotion of nutritional dairy-containing products in food aid. We look forward to continuing to work together to level the playing field for America's dairy farmers and producers."

Also showing support was the American Soybean Association. ASA president Daryl Cates, who grows soybeans in Illinois, said, "America's soybean farmers rely on strong existing export markets and opportunities to open and build new markets. It can take decades to grow markets for our beans and only a matter of days in some cases to lose them, so having the funds to sufficiently support export promotion programs is something ASA and soy growers have consistently championed. And, as both an industry that participates in food aid programs and as human beings, we are pleased to see the administration looking for additional ways to help us address global food insecurity."

Cates says he and others in the soy industry are happy to see USDA acknowledging the uncertainty that surrounds agriculture and challenges that arise from that unpredictability, and that the de-

• Cont. on page 3



Harvest 2023 isn't over yet but I can see the light at the end of the tunnel from here. I just hope it isn't a train. We are down to just a few acres in small patches and this crop year will mercifully be in the books. It certainly won't go down as a good year - memorable, but not good. It's funny how a crop year marked by drought can be derailed at the end by rain but that is what happened to me.

Last week we were going hard and pushing to finish soybeans ahead of the several days of rain in the forecast. I am still a little doubtful that we will see four or five days of rain but that is what is called for and I am sure that a prolonged period of rain would not be good on drought-stressed soybeans. I guess the upside to all of this would be that if something happened to them, we would not be losing very many bushels because there wasn't much to start with.

We started with a push to finish the beans last weekend and we got as close as we could without crossing finish line. My perfect plan started on Saturday; Isaac was back, and I had other help lined up to wean calves. It was a simple task, simply catch all the spring cows, separate them from the calves, give the calves one more round of shots and we would be done. I only had to catch one pasture since the others were already in the lots after running out of grass.

The plan went perfectly, and we caught the cows and calves with no trouble, separated the pairs and vaccinated the calves. I must say everything went as planned, I might not have allowed enough time. My master plan included finishing before lunch and combining that afternoon. We finished with the calves just before lunch and it was around 2:00 before I headed to the field. Undaunted, I still could see that I would have time to get all the soybeans cut before the rain came in on Tuesday.

My combine had other ideas. I am still not sure why, but it plugged up within the first 50 feet. The beans were dry, and I still don't know why or how the combine plugged up. I worked on it for a while, getting more frustrated by the minute. Let me also add that somehow while the combine was in the shed the lever that reversed the feeder wheel and

header got broken. The neighbor who was helping me had to leave for another commitment and I decided with that to help Jennifer catch and move a set of fall cows that had also run out of grass. Tomorrow would be a new day and maybe the problem would be clearer.

The next day was Sunday and I think my track record on Sundays is clear, usually it doesn't pay to work on Sunday. Well, this day was the exception. I went to church (obviously the key), had dinner, and went to the field. We got the combine unplugged right away and it ran like a top the rest of the afternoon. In fact, I would end up having the best day of harvest that afternoon. This farming thing is kind of fun when things work like they should. I will even add that I had to quit before I got the field done because I filled the truck up. The beans were better than I thought. I upgraded the crop from a disaster to bad.

I finished cutting that field the next day and moved on to the final four small fields. The end was in sight, and I was going to make it before the rain. Life was good. I might have gotten ahead of myself at that point because I broke a belt. It was an easy belt to fix but it took going to the John Deere dealer to find the belt. It seems as though running a green belt on a yellow combine does work, I just won't tell anyone.

That little hiccup along with the one on Saturday were going to make it really tight. I did call in my secret weapon and had a friend cut some for me, but the rain was supposed to move in that night. We got three of the four fields cut and right as I was finishing the third field and getting ready to move the sprinkles came. Actually, they came before the end, I couldn't figure out why the beans were so tough until I stepped out of the cab and felt the drops.

I got the truck in the shed right before the rain cut loose. I stand before you with a grand total of four acres of beans between me and the end of soybean harvest. On one hand I am grateful to be that close on the other I am annoyed to be that close. I guess I will chalk it up to doing my part to make it rain. You can send your notes of thanks to me, I do what I can to benefit the greater good.

Since 1954

# GRASS & GRAIN

Published by AG PRESS

**785-539-7558**  
**Fax 785-539-2679**

Editor & Publisher — Donna Sullivan  
[gandgeditor@agpress.com](mailto:gandgeditor@agpress.com)

— Advertising Staff —  
Briana McKay  
[briana@agpress.com](mailto:briana@agpress.com)

**GRASS & GRAIN (USPS 937-880)**  
The newsworthy for Kansas and southern Nebraska, published each Tuesday at 1531 Yuma (Box 1009), Manhattan, KS by Ag Press, Inc. Periodicals postage paid at Manhattan, Kansas and additional offices. Postmaster send address changes to: Ag Press, Box 1009, Manhattan, KS 66505.

**Subscription — \$80 for 2 years. \$43 for 1 year, plus applicable sales tax. Outside Kansas, \$53 for 1 year, \$99 for 2 years.**

**MEMBER OF Associated Press**

**[www.grassandgrain.com](http://www.grassandgrain.com)**



# Ag groups commend launching the Regional Agricultural Promotion Program to boost U.S. food and agriculture exports worldwide

• **Cont. from page 2**  
 partment has conveyed through its funding infusion the importance of market development programs.

"USDA has demonstrated that it recognizes the importance of market promotion programs. We are thankful USDA sees value in the collective efforts of the Foreign Agricultural Service and agriculture cooperators like the American Soybean Association, which are stewards of market development funding and bring vital aid programs and market expansion projects to life," said Cates.

ASA remains committed to its trade and food aid efforts and will continue to push for doubling of Market Access Program and Foreign Market Development program funding in the 2023 Farm Bill reauthorization.

ASA utilizes funds from USDA to support the U.S. Soybean Export Council, which develops and expands markets for U.S. soybean farmers, and ASA's World Initiative for Soy in Human Health, which work to find new and build emerging markets for soy.

U.S. Wheat Associates (USW) and the National Association of Wheat Growers (NAWG) are pleased that U.S. wheat growers now have the opportunity to increase global food assistance and expand export market access

under new USDA funding programs announced Oct. 24, 2023. USW and NAWG thank Secretary of Agriculture Tom Vilsack for releasing the new funds that will directly benefit U.S. wheat farmers and their overseas customers. Additionally, they thank Senators Stabenow (D-MD) and Boozman (R-AR) for their August 28 letter to Secretary Vilsack formally requesting additional support for trade promotion and food assistance.

**Food Assistance**  
 U.S. wheat farmers have been partners in U.S. food assistance programs for more than 60 years and take pride in sharing their harvest to address critical hunger needs around the world. Through the USDA's Food for Progress and USAID Food for Peace programs, the American people have donated more than one million metric tons of wheat annually for the past three years.

"Additional funding for food assistance programs will help address the most urgent humanitarian needs in a generation. USW and NAWG look forward to working with USDA and other partners to ensure additional food donations generate the most benefit where it is needed most," said NAWG President Brent Cheyne. "As NAWG works with Congress to reauthorize the Farm Bill, we continue to advocate for strengthen-

ing the in-kind commodity donation program and additional investments in the existing trade promotion programs."

**Export Market Development**  
 Organizations like USW that participate in USDA Foreign Agricultural Service (FAS) export market development programs were very encouraged when the Agricultural Trade Promotion (ATP) program was established in 2019 as part of a program to ease the effects of trade retaliation against U.S. farmers and exporters. Those funds originated from the Commodity Credit Corporation (CCC) and FAS awarded grants to almost 60 cooperating organizations to be invested by 2024.

"USW demonstrated that the additional funding helped us protect crucial wheat export sales in established markets and build a base for growth in new markets," said USW chairman and Oklahoma wheat farmer Michael Peters. "We appreciate the introduction of the new Regional Agricultural Promotion Program (RAPP), and the USW team will work very hard to use it effectively. Looking ahead, global wheat trade is increasingly competitive and market development takes time and consistency. That's why we believe that in the long-term, increases for established

Farm Bill export development programs are the best way forward."

All across its supply chain, U.S. wheat depends on the successful public-private partnership between USW's state wheat commission members and USDA FAS export market development programs. Checkoff contributions qualify USW to apply for matching funds through programs like the Market Access Program and the Foreign Market Development program.

Under U.S. farm legislation, Congress apportioned funding for MAP, FMD and other export programs. Annual funding for MAP has not changed from \$200 million since 2006 and annual FMD funding of \$34.5 million has not changed since 2002, yet other countries have significantly ramped up their export promotion spending.

"Study after study has shown that these programs consistently meet their purpose to boost agricultural export volume and revenue while supporting the entire U.S. economy,

and the benefits grow with additional funding," Peters said.

For more information about the benefits of FAS

export market development programs visit [www.AgExportsCount.com](http://www.AgExportsCount.com).



**KSFGC**  
Kansas Forage and Grassland Council

**Tuesday, Nov. 7**  
90 minute workshop with three rapid fire presentations.

2:00 pm – "The latest Information on Old World Bluestem Control."  
 Dr. Walt Fick, KSU, Extension State Rangeland Management Specialist  
 2:30 pm – "Cool-Season Pasture Recovery."  
 Mr. Dale Helwig, Cherokee County Ag Agent  
 3:00 pm – "What's My Plan for the Next Drought?"  
 Mr. Trent Page, Sales Manager-Star Seed Inc.

**at the 3rd annual Grass & Grain Farm and Ranch Show!**



November 7 - 8, 2023  
785-539-7558

**NOVEMBER 7<sup>th</sup> & 8<sup>th</sup>**  
 Opens 9 a.m. each day  
 Located in Manhattan, KS at the National Guard Armory  
**FREE Parking**  
**FREE Admission**  
 Find us on Facebook: [GGFarmShow](https://www.facebook.com/GGFarmShow)

## Ag Risk SOLUTIONS

Experience. Knowledge. Integrity.  
YOUR Crop Insurance Solution.

www.ag-risk-solutions.com

913-367-4711

@AgRiskSolutions

/AgRiskSolutions

Ag Risk Solutions is an equal opportunity provider.

 <b>MIKE CHARTIER</b> Hiawatha, KS 913-370-0999	 <b>MARSHALL COFFELT</b> Ravenwood, MO 660-853-2415	 <b>TONY ELIZONDO</b> Wamego, KS 785-410-7563
 <b>JENNIFER FORANT</b> Atchison, KS 785-217-3815	 <b>MIKE SCHERER</b> Atchison, KS 913-426-2640	 <b>KURT SCHWARZ</b> LaCygne, KS 660-424-3422

**40x60x12**  
GARAGE/SHOP

**\$45,500\***

\*Price includes: (2) 10'x10' OHD's; (1) 3'x6'8" Entry Door; (2) 3x3 SH Windows; 4' Wainscot; 12" Overhang; Reflective Radiant Barrier on Sides & Roof; Delivery and Install on your level site.



Check out our website for all our specials!

**QUALITYSTRUCTURES.COM**

**800-374-6988**



**QSI**  
Quality Structures  
Richmond, Kansas

Travel charges may apply. Gutters not included. Price effective 10/1/23 – 10/31/23.

save the date for the 3<sup>rd</sup> annual

# GRASS & GRAIN FARM AND RANCH SHOW

FREE  
ADMISSION

NOV.  
7-8,  
2023

FREE  
PARKING

Starting at 9:00 a.m. each day.  
Located at the National Guard Armory,  
721 Levee Dr., Manhattan, KS

**45,000 sq. ft. of exhibit space featuring a wide array of Farming & Ranching Businesses**

**SEMINARS:**

- Tuesday -

**KS Forage & Grassland Council**  
90 minute workshop starting at 2:00 p.m.

**Risk Management Workshop**  
Starting at 6:00 p.m., by StoneX

- Wednesday -

**Risk Management Workshop**  
Starting at 10:00 a.m., by StoneX

**K-State Vet Med**  
Starting at 2:00 p.m., Dr. Matt Miesner

**Food Vendors:**  
Flyin P Concessions, Vathauer Catering  
Heaters sponsored by Alkota of Kansas

--- FFA Giveaway ---

\$150 per day will be drawn to be given to an FFA chapter in attendance.  
Sponsored by Rockin' S Ranch Supply.

**Grass & Grain / FFA Food Drive to benefit the Flint Hills Breadbasket in Manhattan:**  
Bring a non-perishable food item to receive a bonus entry into the ShowBucks Drawing.



**CHEF ALLI**  
NOVEMBER 7  
10 A.M.



Tractor Display by Kansas Chapter #3 of the IHC Collectors Club



**FREE**  
Call Hall Ice Cream daily at 1 p.m.

Daily \$250 ShowBucks Drawing

ShowBucks can be used with any of our exhibitors. \*Not valid at the food vendors\*

**Grass & Grain Farm & Ranch Show**



November 7 - 8, 2023

785-539-7558

Never miss an issue of

# GRASS & GRAIN

Subscribe or renew today!

New Subscription \_\_\_\_\_

Renewal \_\_\_\_\_

Name: \_\_\_\_\_

Address: \_\_\_\_\_

City: \_\_\_\_\_ State: \_\_\_\_\_ Zip: \_\_\_\_\_

Phone: \_\_\_\_\_

Email: \_\_\_\_\_

Activate Online Edition? \_\_\_\_\_

\*\*Online Edition is FREE with purchase of Print Subscription; Email is required.\*\*

In-State Print Edition Rates:

1 Year; \$43 + additional sales tax \_\_\_\_\_

2 Years; \$80 + additional sales tax \_\_\_\_\_

3 Years; \$111 + additional sales tax \_\_\_\_\_

\*\* SALES TAX DETERMINED BY COUNTY AND MUST BE INCLUDED TO RECEIVE FULL YEAR. CALL IF UNSURE.\*\*

Out-Of-State Print Edition Rates:

1 Year; \$53 \_\_\_\_\_ 2 Years; \$99 \_\_\_\_\_ 3 Years; \$138 \_\_\_\_\_

\*\*Call for info about our 1st Class or Online Only rates\*\*

Check/Cash Enclosed: \_\_\_\_\_

or

Credit/Debit Card:  
 Visa, Master Card, Discover, American Express

- - - - -

Expiration Date: \_\_\_\_ / \_\_\_\_

V-Code (3 digits on back of card): \_\_\_\_\_

Signature: \_\_\_\_\_

Mail to: P.O. Box 1009, Manhattan, KS 66505  
 OR Stop by the office: 1531 Yuma St., Manhattan, KS 66502  
 1-877-537-3816



# GRASS & GRAIN Our Daily Bread

\*\*\*\*\* By G&G Area Cooks \*\*\*\*\*

*Bernadetta McCollum, Clay Center, Wins This Week's Grass & Grain Recipe Contest*  
 Winner Bernadetta McCollum, Clay Center: "Good served over hot cooked rice."

**SLOW-COOKER CHICKEN STROGANOFF**  
 4 skinless, boneless chicken breast halves, cubed  
 1/8 cup butter  
 7-ounce package dry Italian-style salad dressing mix  
 8-ounce package cream cheese  
 10.75-ounce can condensed cream of chicken soup  
 Put chicken, butter and dressing mix in slow-cooker and mix together and cook on low for 5 to 6 hours. Add cream cheese and soup; mix together and cook on high for another 1/2 hour or until heated through and warm.

**Carol Nelson, Topeka: PIZZA BURGERS**  
 1 1/2 pounds ground beef  
 1 onion, chopped  
 2 small cans tomato paste  
 1 large can diced tomatoes  
 1 teaspoon ground basil  
 1 tablespoon oregano  
 Salt to taste  
 Mozzarella cheese  
 Hamburger buns  
 Brown ground beef with onion. In a large saucepan combine tomato paste, tomatoes, basil, oregano and salt. Add meat and mix together. Toast hamburger buns. Put sauce mixture on top of open-faced buns and cover with mozzarella cheese. Bake at 350 degrees for 15 minutes.

**Jackie Doud, Topeka: ORANGE SALAD**  
 1 package vanilla instant pudding  
 1 large can crushed pineapple, not drained  
 2 small cans mandarin oranges, drained  
 8 ounces Cool Whip  
 2 cups miniature marshmallows  
 Mix all together and chill.

**Margaret Wetter, Norton: CREAMY CHICKEN & RICE BAKE**  
 12-ounce can evaporated milk  
 1 package cream cheese, softened

1 can cream of chicken soup  
 1/2 cup water  
 1/2 teaspoon garlic powder  
 1/8 teaspoon black pepper  
 1 bag frozen broccoli, cauliflower, carrot blend, thawed  
 2 cups cubed & cooked chicken  
 1 1/2 cups uncooked rice  
 1/2 cup shredded cheese  
 Combine all ingredients (except cheese) in a 9-by-13-inch greased pan. Bake 35 minutes. Uncover, add cheese and bake 15 minutes. Let stand 10 minutes before serving.

**Millie Conger, Tecumseh: APPLE CRANBERRY SALAD**  
 1 large apple, chopped  
 14-ounce bag of 3 color coleslaw  
 1/2 cup dried cranberries  
 1/2 cup chopped walnuts  
 4 green onions, sliced  
 Dressing:  
 3/4 cup mayonnaise  
 3/4 cup sour cream  
 3 tablespoons honey  
 Mix all salad ingredients. Mix dressing and pour slowly over salad folding in.

**Kellee George, Shawnee: HAM SAUCE FOR HAM**  
 1/2 cup brown sugar  
 1 tablespoon cornstarch  
 1/4 teaspoon cinnamon  
 1/4 cup raisins  
 1 tablespoon butter  
 1 cup water  
 2 tablespoons lemon juice  
 In a pan combine brown sugar, cornstarch and cin-

namon. Add all remaining ingredients and stir to combine. Bring to a boil and stir constantly. Boil and stir 1 minute. Reduce heat and simmer to blend flavors. Good on ham.

**Kimberly Edwards, Stillwater, Oklahoma: PINEAPPLE WHIP PIE**

2 eggs  
 1 cup sugar  
 1 large can crushed pineapple  
 1 package lemon gelatin  
 1 large can evaporated milk, chilled  
 1 graham cracker crust  
 Mix eggs, sugar and pineapple. Bring to a boil, stirring. Remove from heat and stir in lemon gelatin. Set aside to cool. Whip evaporated milk that has been chilled. Stir into custard. Pour into graham cracker crust. Chill before serving.

**Rose Edwards, Stillwater, Oklahoma: FRUIT SALAD**

2 eggs  
 3 tablespoons lemon juice  
 2 tablespoons butter  
 5 tablespoons sugar  
 1 large can fruit cocktail, drained  
 1 cup miniature marshmallows  
 8 ounces Cool Whip  
 Cook eggs, lemon juice, sugar and butter in a double boiler, beating until thick. Cool and then fold in remaining ingredients. Chill.

## K-State Local Foods Program Hosts Talking Sessions Across Kansas

By Pat Melgares, K-State Research and Extension news service  
 MANHATTAN – A Kansas State University program that aims to improve the health of Kansans by increasing access to locally grown foods is rolling out a welcome mat to residents wanting to become involved in the effort.

Rebecca McMahon, administrator of the Local Food System program, said the group will be hosting 11 roundtable, discussion sessions in November to gather feedback from Kansans on what they think is needed to overcome challenges in their local food system.

McMahon said a local food system includes everything that is part of ensuring that people have the food they need to survive, including production, processing, distribution, consumption and food waste management.

"We want to hear about real-life experiences of individuals across the state, both the successes they have experienced and the challenges they have faced," McMahon said.

The schedule of community discussions includes:

- Nov. 2 – Dodge City, 2:30 p.m. to 4 p.m.
- Nov. 6 – Clay Center, 6 p.m. to 7:30 p.m.
- Nov. 9 – Ottawa, 6 p.m. to 7:30 p.m.
- Nov. 10 – Topeka, 1:45 p.m. to 3:15 p.m.
- Nov. 13 – Quinter, 11:30 a.m. to 1 p.m.
- Nov. 13 – Colby, 6 p.m. to 7:30 p.m.
- Nov. 14 – Salina, 3 p.m. to 4:30 p.m.
- Nov. 15 – Wichita, 1 p.m. to 3 p.m.
- Nov. 16 – Hutchinson, 6 p.m. to 7:30 p.m.
- Nov. 21 – Olathe, 6 p.m. to 7:30 p.m.
- Nov. 29 – Pittsburg, 6 p.m. to 7:30 p.m.

An additional roundtable is planned for Liberal in early 2024. Also, four online sessions are available to anyone in Kansas; those are scheduled for 12 p.m. and 7 p.m. on Dec. 5 and 7.

Interested persons must register in advance. Information and registration is available online through the Kansas Local Foods website.

"The topics that will be discussed could include a wide range of things related to food, including food insecurity, food waste, the needs of food businesses or the environmental challenges of producing local food," McMahon said.

She said that Kansans' experiences should key the discussion. "It may be challenges in finding healthy food, starting a business, developing a school or community garden, or navigating zoning codes. Whatever they are, these types of experiences can help us identify what might be helpful in helping local communities and, ultimately, the whole state of Kansas."

McMahon said the roundtable format gives local residents an opportunity to learn from each other.

"We can build healthier people, more vibrant communities and stronger economies, if we can use our common ground to leverage resources and create new opportunities related to local food systems," she said.

Learn more online at <https://www.ksre.k-state.edu/kansaslocalfoods>.

Links used in this story: *Kansas Local Foods*, <https://www.ksre.k-state.edu/kansaslocalfoods>

Registration, *Local Foods Community Roundtables*, <https://www.ksre.k-state.edu/kansaslocalfoods/get-involved/roundtables.html>

### Need Senior Insurance?

- ★ Medicare Supplement
- ★ Long Term Care
- ★ Final Expense

**800-373-9559**

**PHILLIPS INSURANCE**  
*Jim- The Answer Man!*

**Don't Miss!**

## SHOW BUCKS

Sign up daily for a chance to win \$250 in ShowBucks, to be redeemed with any of our Exhibitors.

## FOOD DRIVE

Bring a canned food item to receive an additional entry for the ShowBucks

*at the 3rd annual Grass & Grain Farm and Ranch Show!*

**GRASS & GRAIN**

**NOVEMBER 7th & 8th**

Opens 9 a.m. each day

Located in Manhattan, KS at the National Guard Armory

**FREE Parking**  
**FREE Admission**

Find us on Facebook: *GGFarmShow*

785-539-7558

## BARN BUILDERS DT CONSTRUCTION

918-527-0117

Free Estimates! All Workers Insured Est. 1977

**One Year Warranty**

30x50x10 enclosed..... Galvalume \$12,300  
 12' slider, 1 walk door...Colored metal \$13,300  
 40x60x14 enclosed  
 2 12' sliding doors..... Galvalume \$20,300  
 1 walk door.....Colored metal \$21,700  
 40x100x16 enclosed  
 20' split sliding door..... Galvalume \$29,800  
 1 walk door.....Colored metal \$31,800

Price includes labor and material.\*  
 \*Due to material costs, prices are subject to change.

**WWW.DTCBarns.com**

## HYDRABED BY TRIPLE C, INC.

OPTIONS:  
 - Post Hole Digger  
 - Tool Boxes  
 - Hydra Feeder  
 - 3rd Spool Valve  
 - LED Work Lights

**BEDS IN STOCK**  
**INSTALLATION AVAILABLE**

**BOOT HILL SALES LLC**  
 CLAY CENTER, KS • 785-388-2245 | 785-632-7420

**Don't Miss!**

## CHEF ALLI

*at the 3rd annual Grass & Grain Farm and Ranch Show!*

**Tuesday, Nov. 7 – 10:00 a.m.**

**GRASS & GRAIN**

**NOVEMBER 7th & 8th**

Opens 9 a.m. each day

Located in Manhattan, KS at the National Guard Armory

**FREE Parking**  
**FREE Admission**

Find us on Facebook: *GGFarmShow*

785-539-7558

## Prize for OCTOBER & NOV. 7 & 14, 2023 "Our Daily Bread" Recipe Contest Prize

### Homemade HOLIDAY Cards

Set of 5 Holiday note cards measuring approx. 5 1/2-by-4 1/4 inches.

Handmade by crafter Mary Daniel of rural Topeka. Each unique card is blank inside. 5 envelopes included. These one-of-a-kind cards are a special way to share your holiday greetings with friends & family.

The winner each week is selected from the recipes printed. Send us your favorite recipe. It may be a main dish, leftover, salad, side dish, dessert, or what-have-you.

1. Check your recipe carefully to make certain all ingredients are accurate and instructions are clear. 2. Be sure your name, address and phone number are on the entry. Please include a street address with your recipe entries. A post office box number is not sufficient for prize delivery. Allow 3-4 weeks for delivery.
3. Send it to: Woman's Page Editor, Grass & Grain, Box 1009, Manhattan, KS 66505. OR e-mail at: [auctions@agpress.com](mailto:auctions@agpress.com)

## G&G Announces Its Annual Holiday Recipe Contest

### Nov. 21 through Dec. 19

In observance of the holiday season, Grass & Grain will award the weekly winners \$40 in addition to the prize gift. Recipes received **NOVEMBER 9** through **DECEMBER 11** will be entered in the holiday contest. Enter as often as you like during this period.

**BONUS DRAWING**  
 Second chance to win! The names of all contestants will be entered in a drawing from which four names will be chosen. Each of these four contestants will receive \$40. **Winners will be announced Dec. 19.**

1. The winner each week is selected from the recipes printed. Send us your favorite recipe. It may be a main dish, leftover, salad, side dish, dessert, or what-have-you.
2. Be sure your name, address & phone number are on the entry. Please include a street address with your recipe entries. A PO Box number is not sufficient for prize delivery. Allow 3-4 weeks for delivery.
3. Send it to: Woman's Page Editor, Grass & Grain, Box 1009, Manhattan, KS 66505. OR e-mail at: [auctions@agpress.com](mailto:auctions@agpress.com)

## Pumpkin Energy Bites To Help Fuel Your Day

**PUMPKIN SPICE ENERGY BITES**  
 Consistency not quite right? Add more peanut butter or oats to get your preferred texture. Add mini chocolate chips for some added sweetness!

2-3 cups oats  
 1 cup peanut butter  
 1/2 cup pumpkin puree  
 1/2 cup maple syrup or honey  
 1/4 cup flax or chia or a combination  
 1 teaspoons vanilla  
 1 teaspoon pumpkin pie spice

Wash hands with soap and water. Add peanut butter to a microwave-safe mixing bowl and microwave for 20 seconds until just soft (makes mixing so much easier). Add oats, maple syrup or honey, pureed pumpkin, pumpkin pie spice, vanilla and flax/chia seed to peanut butter. Mix until completely combined.

Using a 1 tablespoon measuring spoon, scoop out 1 tablespoon of the mixture and roll into a ball. Repeat with remaining mixture. Store in an air-tight container in the refrigerator. Eat within 3-4 days. Makes 12-16.

For more healthy tips and recipes, go to: [FOOD.UNLEDU](http://FOOD.UNLEDU)  
 Recipe reprinted with permission from the October 2023 *Hay There* monthly-ish nutrition newsletter for rural families. The University of Nebraska Extension. Hannah Guenther, Asst. Extension Educator, Food, Nutrition & Health.

*Life doesn't stop for an injury.*

**AVOID SURGERY! Use Your Body's OWN Stem Cells.**

- Knee arthritis
- Partially torn rotator cuff
- Degenerative disc disease
- Chronic Pain
- And more...

**ARE YOU A GOOD CANDIDATE? CALL US TODAY! 785.320.4700**

**Schedule a FREE Consultation or Visit [KansasRMC.com](http://KansasRMC.com) to learn more.**

**Kansas Regenerative MEDICINE CENTER**  
 Manhattan • Kansas City

Andrew Pope, M.D. Steve Peloquin, M.D.



By Ron Wilson, director of the Huck Boyd National Institute for Rural Development at Kansas State University

Here's a riddle: What will I do to keep warm when it gets cold on a long trip?

Answer: Al-pac-a-sweater. I'll-pack-a-sweater....

Okay, maybe it's not the funniest riddle of all time, but it does remind us of the warm quality of genuine alpaca fiber. Today we'll meet a rural Kansas alpaca producer who has marketed alpaca products to customers from across the nation and beyond.

Vickie Vandement is the owner of North 40 Alpacas near Osborne. She grew up in Osborne and studied speech pathology at Fort Hays State. She married Mitch, a fellow Osborne resident who studied business at K-State and came back to the community. Vickie is now a speech therapist for two nearby county hospitals.

In the early 2000s, after years in the cattle business, the Vandements thought about producing a different type of animal. In 2004, they got three alpacas and found they really enjoyed them. They grew the herd from there.

Alpacas are members of the camelid family, along with llamas. All of the Vandement alpacas are named and registered. "We breed for good personality and color," Vandement said.

Instead of breeding stock, the Vandements wanted to sell products made from alpaca fiber. Alpaca fiber is prized for its softness, warmth retention, durability, and high quality. The Vandements have their alpacas shorn annually and have the fiber processed into various products.

In 2012, they started taking their fiber products to craft shows. In 2015, they built a store of their own. It was located on land they owned which was part of a 40 acre tract along Highway 24 north of Osborne, so they named their business North 40 Alpacas. The store is collocated with the alpaca barn, so customers can view the live alpacas themselves as well as shop. In fact, they can even feed and pet the alpacas.

Tragically, Mitch passed away in late 2020. Vickie and a crew have continued the business.

Because alpaca products are primarily winter wear, the North 40 Alpacas store is only open from October to March and at other times by appointment. Through a program called Harvest Hosts, many RV travelers will stop and camp overnight near the store. North 40 also hosts tours.

The store is situated in a pretty, country setting, north of the rural community of Osborne, population 1,335 people. Now, that's rural.



"Alpacas are smart, trainable animals," Vandement said. "Even little kids can feed them and lead them. They are easy to care for."

Alpacas are clean and sociable animals. Her alpacas have been part of birthday parties, graduation parties, family reunions and more.

"You can have them in your house," Vandement said. On one memorable Halloween, the Vandements put an orange hat and a Halloween scarf on one of their alpacas to greet their guests at the door. Imagine what trick-or-treat was like at that house.

Alpacas are relatively inexpensive to feed. "You can feed an alpaca for much less than any pet," Vandement said. Alpaca feet are cushioned with natural pads so they are easier on the ground than cows, for example.

But it's alpaca fiber that makes them famous. "You need to experience it to realize the quality,"

Vandement said. The soft, silky, luxurious fiber is particularly good at holding in heat. Socks, sweaters, scarves, blankets, and headbands are especially popular. "Customers have told us that the only socks they'll have in the drawer now are alpaca socks," Vandement said.

The store also offers small stuffed toy alpacas. These incredibly soft toy animals have been said to be helpful for autistic children or people with Alzheimers.

North 40 Alpaca products are sold online as well as in-store. The products have gone coast-to-coast and as far away as the Virgin Islands and Sweden. For more information, see [www.north40alpacas.com](http://www.north40alpacas.com).

So here's a closing riddle: What is an alpaca's favorite 1970s movie?

Answer: Alpaca-lypse Now.

Alright, no more alpaca jokes. We commend Vickie Vandement of North 40 Alpacas for making a difference with her specialty animal entrepreneurship. Her business success gives me a warm feeling, with every fiber of my being.

Audio and text files of Kansas Profiles are available at <http://www.kansas-profile.com>. For more information about the Huck Boyd Institute, interested persons can visit <http://www.huckboydinstitute.org>.

## Prairie Gal Cookin'

Recipes and Ramblings from the Farm

### Australian Cheesecake

By Ashleigh Krispense

We woke up to a wonderful shower of rain this morning. What a blessing! The landscape is a beautiful fall display and the rain has brightened the various shades of orange, green, and yellow. The oak trees outside our back door are dropping a carpet of leaves and it won't be long before the days are cold again and we're looking for a chance to stay inside near the wood stove.

In the meantime though, we're munching on a dessert that has been passed through various people in my husband's family. Finally coming to my recipe box from his grandma, this Australian cheesecake has been dubbed by some the best dessert they've ever eaten. If you're looking for something light, now would be a good time to look away. But, if you're feeling a little adventurous with the butter and sugar, grab your oven mitts and let's dive right in!

Australian Cheesecake You'll Need:

- 2 sticks butter
- 2 cans of crescent rolls
- 2 cups sugar
- (2) 8-ounce blocks of cream cheese, softened

Unroll and pinch together the seams of one can of crescent rolls until it is a nice, big sheet of dough and place in the bottom of the pan once the butter has melted.



In a medium bowl, mix together the sugar and softened cream cheese. Spread out evenly over the crescent roll layer.

Using the remaining can of crescent rolls, unroll and pinch the seams together. Lay them out over the cream cheese mixture.



Melt the remaining stick of butter and pour over the top of the crescent roll layer.



Bake for around 20 to 25 minutes or until golden brown on top. Let cool before refrigerating and serving (unless you just dive right in while warm)! Enjoy!

Ashleigh is a freelance writer and the gal behind the website, *Prairie Gal Cookin'* ([www.prairiegalcookin.com](http://www.prairiegalcookin.com)), where she shares step-by-step recipes and stories from around the farm in Kansas.

## What Color Should Canned Foods Be? Food Scientist Explains Why Preserved Foods Change Color

By Maddy Rohr, K-State Research and Extension news service

MANHATTAN – It is the season of canning from apples to cauliflower, pears, peaches and beets. And if you're concerned about why a canned food has changed color, Kansas State University food scientist Karen Blakeslee said it can be for a variety of reasons.

"In canning, if there is an unexpected color change, that can be a signal that spoilage is present and can affect the quality of the food," Blakeslee said. "For example, if the stored jars of food are exposed to light, that can cause the food to change color and could cause spoilage."

Blakeslee added that if food inside the jar is above the liquid at the top of jar, that food can discolor during storage but still be safe to eat.

"Some foods such as pickled cauliflower or garlic can turn pink or blue because the food may be immature or pigments in the food react with the acid in the pickling solution, causing color changes. This doesn't look right, but is not harmful," Blakeslee said.

Blakeslee recommends the following to keep canned food safe:

- \* Keep all produce cool after harvest.

- \* When using the hot pack method, do not overcook or heat to too high of temperatures. Excessive heat changes natural food pigments.

- \* Use correct process-

ing methods and time to reduce discoloration.

- \* Pressure canning can be used to can pears, but it can cause pink discoloration in canned pears. Water bath processing is a better method.

"If the fruit grew in dry weather, it often turns pink and cannot be prevented. While the color doesn't look right, the pears are safe to eat," Blakeslee said.

Additionally, garlic can become greenish or purple if it is immature or not completely dry before canning. Red beets may lose color if overcooked

or over-processed before canning.

Blakeslee said some color changes can be prevented.

"When canning apples or peaches, the color can be protected by using ascorbic acid, which prevents the food from turning brown," Blakeslee said. "But some foods, like green beans, will change from bright green to olive green during canning and that is a normal color change that cannot be prevented."

Blakeslee, who also is coordinator of K-State's Rapid Response Center

for Food Science, publishes a monthly newsletter called *You Asked It!* that provides numerous tips on food safety. More information is also available from local extension offices in Kansas.

Links used in this story: Rapid Response Center, <https://www.rrc.k-state.edu>

*You Asked It!* newsletter, <https://www.rrc.k-state.edu/newsletter>

K-State Research and Extension local offices, <https://www.ksre.k-state.edu/about/statewide-locations.html>



Preheat your oven to 350 degrees. Place one stick of butter in a 9-by-13-inch baking dish and pop in the oven until the butter has melted.



**AG LIME GYPSUM**  
Standard or Variable Rate Application  
**GEARY GRAIN, INC.**  
Junction City, Kansas  
**785-238-4177**  
[gearygrain.com](http://gearygrain.com)

**HESS & SONS**  
SALVAGE, INC.  
1209 N. PERRY, JUNCTION CITY, KS

- ROLL-OFF SERVICE for trash, clean-up, or construction
- BUYING: Farm Machinery delivered, Machine Cast, #2 Steel, & Prepared Iron
- ALSO BUYING: Copper, Brass, Car Bodies w/ Clear Titles, Aluminum, Aluminum Cans, Prepared Non-Magnetic Stainless Steel, Batteries, and A/C Sealed Units.

**CALL: 785-238-3382**  
Ask for Lanny or Jake for current prices, & roll-off sizes available. Prices subject to change without notice.

**NEW Cookbook Available Now**

★ Over double the pages, nearly double the recipes! ★

CLIPS FROM  
"OUR DAILY BREAD"  
**NEW!**

Grass & Grain  
RECIPES COLLECTION  
Volume 8

*For the first time ever, we've combined 2 years worth of unique & delicious recipes from "Our Daily Bread" (circa 2015-16) into one book of almost 200 pages. This includes a few 'vintage' recipes that were republished for our 50<sup>th</sup> anniversary in 2015. The book also contains an advertising directory for the first time.*

**Don't miss out, Order your copy of Volume 8 today!**

Call or stop by **GRASS & GRAIN** to order yours:  
**785-539-7558**  
**1531 Yuma St • Manhattan, KS**  
**\$22/ea., + \$5 shipping to U.S.**

A Complete Cattle Feeding & Marketing Service

# TIFFANY CATTLE CO., INC.

- Risk management handled by Tiffany Cattle Company
- Locked commodity prices
- Complete profit/loss statement for each pen
- All marketing decisions discussed with and approved by cattle owner
- Rewarded for your efforts in producing a quality product by selling your cattle on an industry competitive grid

*Family Owned & Operated*

Tiffany Cattle Company, with a total capacity of 32,000 head, is equipped to offer economies of scale and industry leading service to customers of any size.

*Production Services*

Objective is simply: Least Cost Per Pound of Gain!  
Ration formulation and cost analysis, health program designed and maintained by veterinarian, special pens and attention to sick animals, feed financing and cattle purchasing available.

*Marketing Services*

Marketing finished cattle is top priority at Tiffany Cattle Company. You have the option of selling on the cash market, forward contracting or grid pricing through multiple Kansas packers.

★ [www.tiffanycattle.com](http://www.tiffanycattle.com) ★

Follow us on at Tiffany Cattle Company

Tiffany Cattle Company  
1333 S. 2500 Road  
Herington, KS 67449  
(785) 258-3721

Tiffany Cattle West  
758 Pioneer Road  
Marquette, KS 67464  
(785) 546-2216

Shawn Tiffany - COO (785) 229-2902 [shawn@tiffanycattle.com](mailto:shawn@tiffanycattle.com)  
Shane Tiffany - CEO (785) 466-6529 [shane@tiffanycattle.com](mailto:shane@tiffanycattle.com)  
Dennis Roddy - CFO (620) 767-2139 [dennis@tiffanycattle.com](mailto:dennis@tiffanycattle.com)  
Tanner Stucky - Asst. Mgr. (620) 214-0979 [tanner@tiffanycattle.com](mailto:tanner@tiffanycattle.com)

**GET YOUR NAME-OUT THERE!**

Reach YOUR customer base with affordable advertising.

**WE CAN BUILD TO YOUR BUDGET!**

You can't sell what you don't advertise!  
Call today for more info!  
**GRASS & GRAIN**  
785-539-7558



## Are cover crops right for your farm?

In recent years, interest in adding cover crops has increased and potential benefits have become more widely recognized. From nitrogen (N) and nutrient management to soil health and carbon credits, there are numerous reasons why growers may consider adding cover crops to their farms. But cover crops are not for every field, or even every grower.

"What's your goal with cover crops?" asked Kevin Fry, Pioneer field agronomist. "While forages and erosion control are the top methods in most places, growers need to define their goals before planting a single seed."

The most commonly used cover crops fall into one of three broad groups: grasses, legumes and brassica.

Grasses, including winter cereals such as

rye, wheat, barley and triticale, are the most widely used cover crops in corn and soybean cropping systems. In general, these grasses are best suited for scavenging soil nutrients, preventing soil erosion and suppressing weeds.

Legumes are valued as cover crops primarily for their ability to fix N. Common legumes used as winter cover crops in corn and soybean cropping systems include hairy vetch, field pea, lentil, crimson clover, red clover and berseem clover.

Brassica cover crops, such as radish or winter canola, have grown in popularity recently due to their ability to provide many of the same benefits as grasses but with residues that break down more rapidly in the spring. Certain brassicas are also becoming well known for

their ability to produce a large taproot that is effective at minimizing soil compaction.

It is important to note that cover crop suitability varies by region. Minimum annual temperature is a good predictor of how well adapted a cover crop is to a location.

Growers also need to consider how and when to terminate their cover crops. Winterkilling, tilling, mowing and herbicides are the four main methods. Winterkilling is highly effective but only applicable to certain cover crops. Similarly, while tilling legumes can help increase N availability, it is less desirable for grasses that produce greater quantities of low-N biomass. Due to simplicity and efficacy, many growers prefer to terminate cover crops using herbicides.

Research studies on the effects of cover crop on grain yields vary depending on environment, cover crop species and management. Getting the greatest benefit out of cover crops requires a management level on par with corn and soybeans. Growers should start by testing a cover crop on a single field and expand.

## Nearly 1,500 farmers and producers reject EPA herbicide strategy

Cont. from page 1  
Producers and applicators to even determine their regulatory requirements. There were also concerns with the proposal lacking sufficient, affordable options with which growers can comply. For many producers, the new regulations would cost their farms millions of dollars, while others may be unable to comply at all, jeopardizing their access to needed herbicides and thus threatening their businesses.

"Weeds are one of the most devastating pests farmers face," said Alan Meadows, a soybean

grower from Halls, Tennessee, and director of the American Soybean Association. "Weeds can steal limited water and nutrients from the soil and crowd out your crop. If not properly managed, they can quickly overtake a field and even result in total crop failure. If the herbicide strategy or other regulations deprive us of the tools needed to manage these destructive pests, many farms across the U.S. will struggle to stay afloat."

Importantly, the letter also cites concerns farmers have with the proposal's likely impact on the

environment. Many conservation practices, such as reduced tillage and cover crops, are highly dependent on herbicide access. Most growers in the U.S. terminate their cover crops with herbicides before planting their primary crop. Herbicides also afford farmers an alternative to tilling the soil to eradicate weeds, allowing for soil carbon sequestration and significant reductions in both soil erosion and tractor fuel use. These and other environmental benefits could be at risk if farmers lose access to herbicides under this proposal.

## Can soybean residue be a forage crop?

By Ross Mosteller, Meadowlark District Extension agent, livestock and natural resources

If anyone follows my columns on a regular basis, you might think I'm a broken record. Forage inventory this fall is tight, across a wide region of the heartland. As combines pull out of fields, a whole new source of possible forage and grazing days comes into discussion. Crop residues offer a cost-effective opportunity for cows to graze or for baling and winter feeding. Corn and sorghum residues get most of the attention, for good reason as they make excellent fall feed, but soybean residues have a place in this discussion as well.

Soybeans are very high in protein and fat, which stands to reason in the ways they are utilized in the industry. Even the most efficient harvesters will leave a few beans in the field and that is what the livestock will forage for first. At about 40% crude protein and 20% fat, the beans alone can be a good feed source when fed in moderation. The high fat content can cause issues with rumen function, especially in young calves, so before letting animals out to graze a bean field, be sure to clean up any piles of spilled grain. If the crop field has waterways or other grass buffer areas, this helps with rumen and ration balance. These types of fields make excellent candidates for soybean residue grazing. If water is available, this becomes even more desirable.

Soybean residues, on

the other hand, have a much different feed composition. Empty bean pods and stems contain only 4 to 6% CP and the TDN is only 35 to 45%. Soybean leaves are slightly higher in protein at 12%, but the leaves break down quickly and are usually no longer available for consumption once harvest has been completed. Cows will eat this residue, but don't necessarily like it. The more digestible portion of this residue breaks down quickly, so the grazing window tends to be shorter than other crop residue options.

All that said, soybean residues will not meet the nutritional requirements of a dry cow, even if there is some grain left in the field. All is not lost, because there is still opportunity to graze soybean residue in conjunction with a supplemented high-quality feed. Not only does this provides rest to pastures, but can help stretch feed resources while still ensuring the cow is properly fed. There is some benefit to nutrient recycling that occurs as the cow processes and redistributes the residue. Baled soybean residue can be used as a

roughage source in rations if that is a needed component for your operation.

As with any discussion of utilizing crop residues, there becomes the discussion of pros/cons to the cropping enterprise. Soil compaction, nutrient removal/recycling, livestock trailing, getting adequate compensation from the livestock enterprise, etc. – all need to be looked at and evaluated. The livestock side of the equation looks at fencing, water, distance from operation, etc. This discussion can be saved for another day, but managed appropriately, this can be a win-win for both crop and livestock enterprises.

So, to summarize, soybean residue can be used to rest pasture and stretch feed resources, but residue alone will not meet any class of livestock's nutrient requirements. Second trimester, dry cows are likely the best choice for livestock to utilize these residues. Keep in mind, supplementation will be needed if you decide to utilize your soybean residue. Proper grazing management and an open fall weather-wise, makes this a more attractive option.

## Bulls missing in Doniphan County

Three bulls have been reported stolen in northern Doniphan County. The Angus bulls went missing sometime in July or August. All three are two- to three-year-olds and have a freeze brand. One of the bulls has an EX branded on the left shoulder, with the other two carrying an H backward J on the left shoulder.

KLA is offering up to \$5,000 for information leading to the arrest and conviction of the thieves. The reward program only applies when the producer is a KLA member. Any-one with information on the bulls should contact the Doniphan County sheriff's office at (785) 985-3711.

## FARM EQUIPMENT AUCTION

WEDNESDAY, NOVEMBER 8, 2023 \* TIME: 10:30 AM

LOCATION: From DIGHTON, KS, 4 miles north to Rd 190, 3 miles east to Newton Rd, then 2 miles north.

**TRACTORS & LOADERS:** 2007 CIH JX1100 tractor, mfw, 750 hrs., 3 pt., pto, joy stick; 1992 CIH 9230 tractor, row crop special, 9192 hrs., 3 pt., pto, duals, #29193; 1993 CIH 9230 tractor, 3 pt., pto, 8326 hrs., duals, #29336; 1969? AC 840 payload, 4894 hrs., w/grapple (rebuild motor); 1971? AC 840 payload, 7248 hrs., rebuilt motor; 1971? AC 220 tractor, 3 pt., pto; AC 7060 tractor, 3 pt. pto, quick hitch, non-running; 3) AC 190 tractors 3 pt., pto, diesel; Case 610 tractor, 3 pt., new rear tires, #5129902.

**COMBINE & SPRAYER:** 1984 Gleaner L3 combine, corn, soybean special w/24 ft platform; AC 24 ft. platform; AC 8x30 corn head; Mertz self-propelled sprayer, 1700 gal. ss tank, booms.

**BACKHOE, MOWERS:** 5010 Ditch witch w/A-420 backhoe, trencher; Cub Cadet Tank L, commercial zero turn mower, 60" deck, 130 hrs.; Cub Cadet zero turn mower, 50" deck; Poulan tractor riding mower.

**TRUCKS:** 2006 Freightliner Columbia semi-truck, day cab, 817,000 miles, 13 spd. trans., Mercedes-Benz motor; 1973 Ford LN 600 truck, flatbed; 1964 GMC 4000 truck, 14 ft. bed.

**TRAILERS:** 2011 Jet semi-trailer, 40 ft, used little; Utility trailer, 10 ft., ramp gate; Utility trailer, 12 ft., ramp gate.

**FARM EQUIPMENT:** Sunflower FK 7x5 sweep plow w/new style pickers (nice plow); Crustbuster TS 30x12 hoe grain drill, 30 ft., 12", tarps; Rhino SE10 mower, pto, pull type; Land Pride RCM 5515 folding mower, 15 ft.; Great Plains 30 ft. solid stand disk drill, folding,

7"; Sunflower 7x5 sweep plow w/spring tine harrows; Tucker 12 ft. speed mower, tilt option; IHC close row cultivator, 8-row, 40"; Big Ox 10 ft. rear blade, 3 pt.; United Farm Tool 400-bushel grain cart; Heavy 4x4 bar w/chisels, 30 ft. folding; EZ Trail grain wagon, Model 3400 w/hydraulic unloading auger; Furrowing bar, 8-row, 40"; Orthman 28 ft. folding bar; JD double diamond bars, 20 ft.; Lilliston cultivator, 8-row, 40"; Gehl 2-row silage cutter; Holcomb land leveler; Garfield 10ft. speed mower.

**OTHER FARM ITEMS:** Danhauser 3 pt. post hole digger; Dudley wire roller; Hydraulic wire roller; (2) L shaped fuel tanks w/12-volt pumps (like new); (16) 11.2-38 sprinkler tires & rims (new); Used tires; HD 35 hydraulic post hole digger, front mount.

**PICKUPS:** 2005 Chevy ext. cab pickup, auto., 5.3-liter motor, 4x4, less than 10,000 miles on new motor; 1984 GMC pickup w/utility bed, auto.; 1998 Ford F-150 pickup ext. cab, 4x4, bad trans.; 1998 Ford Ranger pickup, ext. cab, 4x4, auto., no title; 1989 Chevy pickup, ¾ ton, 305 motor, auto., 61,000 miles; 1985 Ford Bronco, for repairs.

**SHOP TOOLS:** Lincoln 225 Ranger portable welder, 202 hrs.; Lots of hand tools; Cutting torch & bottles; Ingersoll Rand air compressor, 60 gal., 230-volt; 7,000-watt generator w/B&S motor; Solar brand battery charger; (2) Cherry pickers; Lincoln arc welder; Makita chop saw; Floor jack; Puma portable air compressor w/gas motor; Other items.

Check us out on Facebook & at [www.berningauction.com](http://www.berningauction.com)

**ELVERN BORELL ESTATE, OWNER**

**TERMS:** VALID ID required to register. NO EXCEPTIONS! Cash or approved check day of sale. No credit cards! Everything sold as is. No warranties expressed or implied. Not responsible for theft or accident. Announcements day of auction take precedence. **LUNCH SERVED.**

**NOTICE:** Due to Covid-19, you are responsible for your own SAFETY and HEALTH. The auction company nor the seller will be held responsible. Social guidelines are in place, so please be respectful. We know auctions are a hard place to social distance, so we will have masks and hand sanitizer available. Enjoy the auction!

**BERNING AUCTION, INC.**  
812 West M, Leoti, KS 67861, 620-375-4130



(800) 369-3882

[www.toplinebuildings.com](http://www.toplinebuildings.com)  
[sales@toplinebuildings.com](mailto:sales@toplinebuildings.com)

## STEEL BUILDING INVENTORY SALE

I-Beam Construction  
Easy Bolt-Up Design

40x65 • 60x90 • 100x150 • Many Others Available

## Moser Ranch

32nd Annual Bull Sale

SATURDAY, NOVEMBER 11, 2023

BID-OFF AT 11:00 AM • AT THE RANCH, WHEATON, KS  
PRIVATE TREATY OFFERING • 60 SIMANGUS, ANGUS & SIMMENTAL BULLS

All bulls tested negative for PI-BVD and Leukosis

### LOT 11 MSR 2600K

1/2 Sim x 1/2 Angus

Great Western x Frontman

Homo Black/Homo Polled

CE 14 BW -2

Wean 67 Year 105

MCE 7.9 Milk 26

Marb .42 REA .68

API 146 TI 79



41 YEARS OF GENETICS WITH FOCUS

CALVING EASE • MATERNAL • PERFORMANCE • FEEDLOT & END PRODUCT STRONG

Harry & Lisa Moser • Cameron & Carrie Moser & Family • 3063 26th Road, Wheaton, KS 66521

Harry 785.456.3101 • [moserranch@moserranch.com](mailto:moserranch@moserranch.com)

Video of bulls and sale updates • [WWW.MOSERRANCH.COM](http://WWW.MOSERRANCH.COM)

## SANTEE STEEL

Serving Clay, Cloud, Dickinson, Geary, Marshall, Morris, Ottawa,  
Pottawatomie, Republic, Riley, Saline, Wabaunsee, & Washington counties

LOCAL BOYS - A FULL 3 YEAR WARRANTY.  
WE ARE NOT FROM OUT OF STATE.

DON'T WAIT TILL WINTER TO ORDER YOUR BUILDING -  
WE MAY GET BOOKED UP

WE SERVICE OUR WARRANTIES, IF THERE IS A PROBLEM.  
LIST OF REFERENCES TO PROVE IT.

POST FRAMED POLE BARN AND STUD FRAMED  
SHOP BLDGS FULLY FINISHED.

SHOP HOUSES, IMPLEMENT BLDGS, HAY BARN & SO ON.

GIVE CARL A CALL TODAY:  
785-370-3189





When the internet is a wonderful thing, Part One: I just finished teaching two sessions for Osher Lifelong Learning Institute at KU - from Philadelphia. There were students from Lawrence and Tulsa and places in Texas, and lots of places in between. For the Native Tribes in Kansas class I had invited guests that included Holly Zane of the Wyandot Nation, Ken Bellmard of the Kaw Nation, and Max Bear from the Cheyenne-Arapaho Nation. All joined from points in Missouri or Okla-

homa via the internet. For years, I taught Osher classes in person from Topeka to Lawrence to the Kansas City Metro and I loved every minute of it. My move to western Kansas, however, put a halt that career. With Covid protocols, however, Osher went to online classes and my distance from the students was no longer a problem. When they returned to in-person classes, they continued online options as well and I was able to continue teaching. It is a joy.

For the spring semester, I will be offering a class on Governors Samuel Crawford and Arthur Capper, the father-in-law/son-in-law duo who were so instrumental in shaping Kansas for a hundred years.

My primary project now is finishing the biography of Vice President Charles Curtis (due to be published next autumn). As I research him, however, I am building some pretty good files on Crawford and Capper and I think that will be my next book.

Even in far-flung western Kansas, both of these men are connected to Fort Wallace. In fact, Governor Crawford created Wallace County in 1868. And among our artifacts are certificates signed by Governor

Capper. Capper's media empire included magazines that were delivered to most of the homes in Kansas and across the nation. They were fascinating and influential men, both of whom rest in Historic Topeka Cemetery.

When the internet is a wonderful thing, Part Two: You can visit their graves, and all those other interesting folks in Historic Topeka Cemetery, online at findagrave.com.

Deb Goodrich is a producer on the film *Sod and Stubble* and is the host of *Around Kansas*. She is the *Garvey Texas Foundation Historian in Residence at the Fort Wallace Museum and chairs the Santa Fe Trail 200*. Contact her at [author.debgoodrich@gmail.com](mailto:author.debgoodrich@gmail.com).



## LAND AUCTION

388+/- ACRES MARSHALL COUNTY, KS CROPLAND

FRIDAY, NOVEMBER 17, 2023 — 10:00 AM

Auction Held at Herkimer Community Center, HERKIMER, KANSAS (Follow Signs)

**TRACT #1:** NE1/4 less r/w in Section 2, Township 2 South, Range 6 East of the 6th P.M., Marshall Co., KS, consisting of 155+/- acres in Logan Township.

**FSA \*Estimated Info:** Farmland Acres: 153.83; DCP Cropland Acres: 105.79; Base Acres - 86: Soybeans 47.10, Grain Sorghum: 27.50, Wheat 10.70, Oats 0.70; PLC Yield: Soybeans 25, Grain Sorghum 69, Wheat 34, Oats 40.

**Farm Located:** From Herkimer, go 1 mile north on 6th Rd., the farm sits on the west side of 6th Rd. & north side of Frontier Rd. **Description:** The farm is terraced, and had 103+/- acres of planted crop this season. This farm consists of Wymore & Pawnee soils, and has recently been in a Milo and Bean crop rotation. The balance is 41+/- acres of grassland that is mostly hayed, 6+/- acres of waterways, and there is an older farmstead with 5+/- acres. The farm is conveniently located only 1 mile north of a grain elevator on a good county rock road.

**TRACT #2:** SE1/4 less r/w in Section 2, Township 2 South, Range 6 East of the 6th P.M., Marshall Co., KS, consisting of 156+/- acres in Logan Township.

**FSA Info:** Farmland Acres: 154.95; DCP Cropland Acres: 89.16; Base Acres - 88.10: Wheat 44.90, Grain Sorghum 25.90, Soybeans 17.30; PLC Yield: Wheat 34, Grain Sorghum 63, Soybeans 34.

**Farm Located:** From Herkimer, go 1/2 mile north on 6th Rd., the farm sits on the west side of 6th Rd. & north side of Granite Rd. **Description:** The farm is terraced, and had 85+/- acres of planted crop this season. This farm consists of Wymore & Pawnee soils, and has recently been in a Bean & Milo crop rotation. The balance has 71+/- acres of mostly grassland consisting of hay ground, timber, a watershed pond & easement, waterways, and an older farmstead along 6th Rd. The farm is conveniently located only 1/2 mile north of a grain elevator on a good county rock road.

**TRACT #3:** W1/2 SW1/4 less r/w in Section 1, Township 2 South, Range 6 East of the 6th P.M., Marshall Co., KS, consisting of 77+/- acres in Logan Township.

**FSA \*Estimated Info:** Farmland Acres: 76.83; DCP Cropland Acres: 21.90; Base Acres - 17.60: Soybeans 9.70, Grain Sorghum: 5.60, Wheat 2.20, Oats 0.10; PLC Yield: Soybeans 25, Grain Sorghum 69, Wheat 34, Oats 40.

**Farm Located:** From Herkimer, go 1/2 mile north on 6th Rd., the farm sits on the west side of 6th Rd. & north side of Granite Rd. **Description:** The farm had 21+/- acres of planted crop this season. This farm is mostly Pawnee & Wymore soils, and has recently been in a Bean & Milo crop rotation. The balance has 56 +/- acres of grassland that consists of hay ground, timber, and watershed easement. This farm is conveniently located only 1/2 mile north of a grain elevator on a good county rock road.

**TERMS for Each Tract:** Cash with 10% down payment on auction day, and the full balance is due on or before December 18, 2023 with delivery of deed and marketable title. Full possession will be given at closing. Seller & Buyer equally pay for owners title insurance policy, and attorney fees for preparation of contract & deed and escrow fees.

This land is located in a good farming community, and should merit the serious consideration of anyone wanting an individual unit or add-on acres. Look it over before sale day, and come prepared to bid. Statements made day of sale take precedence over any advertised or previous statements.

### LAWRENCE A. "TONY" STOEHR TRUST

For inquiries, contact Auctioneer & Broker:  
OLMSTED REAL ESTATE  
Tom Olmsted: 785-562-6767 \* Rob Olmsted: 785-353-2210

[www.olmstedrealestate.com](http://www.olmstedrealestate.com)

## LIVE PERSONAL PROPERTY AUCTION

(Power Tools, Woodworking Tools, Guns, Knives, Collectibles, Household)

SATURDAY, NOVEMBER 11, 2023 - 10:00 AM

(Truck & Guns sold at Noon)

SELLER: ESTATE OF DAVID & SANDY CLARK

AUCTION LOCATION: 1101 S Elm St, McPHERSON, KS 67460

**TRUCK:** 2006 Ford F150 XL Reg Cab, 2WD, 6-cyl, 66,717 mi; **GUNS:** Remington Fieldmaster .22 LR Pump; Browning Light Twelve GA; Remington Model 1100 LW 20-ga; Remington Wingmaster Model 870 LH Pump 20 GA; Parker Brothers 12-ga Double Barrel Shotgun, Damascus Barrels, w/ Org Case, Cleaning Rod; Remington Wingmaster 12 GA; JC Higgins 12 GA Pump; Stevens Double Barrel .410; Pittsfield Model WP .410 Single Shot; Hopkins & Allen .22; Winchester .22; Winchester Model 67A, .22 Single Shot; JC Higgins .22; Ruger .44 Super Blackhawk Revolver; **KNIVES & OUTDOOR:** Buck; Throwing Knives x2; Benchmade Elishewitz ATS-34; US M8A1 Bayonet; US M4 Bayonet; Camillus USMC Knife; Ka-Bar Skinning Knife; Gerber Dagger; Over 50+ Knives; **LARGE TOOLS & EQUIPMENT:** DeWalt 13" Thickness Planer; Delta Table Saw; Rockwell Bandsaw; Murray 20" Push Mower; Troy Bilt Econo Horse Tiller; Craftsman 42" Riding Lawn Mower; Duracraft Drill Press; Delta 6" Grinder; Delta 10" Miter Saw; Stanley Rolling Tool Chest; Interchange Brand Air Compressor; **TOOLS:** DeWalt Jig Saw; 10" Skil Saw; Skil 3/4HP Belt Sander; Bosch 905 Plunge Router; Porter Cable Trim Saw; Milwaukee Sawzall; DeWalt Plate Joiner; Kennedy Tool Box; DeWalt Angle Grinder Drill Bits; Porter Cable Deluxe Dovetail Jig; Ext Ladderx2; **HOUSEHOLD:** Whirlpool Refrigerator; Large Leather Chair; Kenmore Deep Freezer; GE Profile Gas Dryer; Green & Teal Pyrex Mixing Bowls; Whirlpool Stainless Shop Fridge; Oak Dining Room Table; Budweiser Beer Steins x15; Bose Music System; Carhartt Coat & Vest; Vinyl Records (Beach Boys, Hank Williams, Alabama, Woodstock, Grease, Van Halen, Seekers & more); Elvis Collectibles; Quilts and Quilted Bed Spreads; Queen Aloe Care Bed and Mattress; **This a partial listing.**

See full listing, terms & photos [GriffinRealEstateAuction.com](http://GriffinRealEstateAuction.com)

 Phone: 620-273-6421 305 Broadway, Cottonwood Falls, KS 66845 <a href="mailto:griffinrealestateauction@gmail.com">griffinrealestateauction@gmail.com</a>	CHUCK MAGGARD Sales/Auctioneer Cell: 620-794-8824 ANDY PHIPPS, Auctioneer 620-794-1673 In Office: Heidi Maggard
---	--

## REAL ESTATE & PERSONAL PROPERTY AUCTION

THURSDAY, NOVEMBER 9, 2023

TIME: 5:30 PM (Personal property @ 4:00 PM)

LOCATION: 701 S. Madison, JUNCTION CITY, KANSAS



**DESCRIPTION:** Well-maintained 3-bedroom, 2-bathroom home with attached 1-car garage and detached 1-car garage. Located on a nice corner lot, this 1100 sq. ft. home offers potential as a starter home or investment property.

**REAL ESTATE TERMS:** Property sells AS-IS, WHERE IS. 5% non-refundable down payment is required on the day of sale by check. Buyer must be able to close on or before December 12, 2023. Buyer needs a bank letter of loan approval or funds verification. Cost of Owner's Title Policy to be split equally between Buyer and Seller. Buyers are responsible for understanding all zoning, building & other regulations associated with the property prior to the day of auction. All announcements day of sale take precedence over written materials. Andria Zimmerman is working as a Designated Seller's Agent.



**CAR:** 2016 Chevy Equinox LT-SHARP!!! (~70,000 miles)  
**YARD & TOOLS:** Steel stool; mini air compressor; ext. chords; battery charger; ext. ladder; aluminum step ladders; step stools; Yardman push mower; jumper cables; leaf blower; shepherd hooks; lawn chairs; wood ladder; yard tools; misc. tools.  
**HOUSEHOLD:** Misc. décor items; Pampered Chef items; Quaker Oats cookie jar; fan; dorm fridge; misc. shelves; several end tables; recliner; coffee table; vacuums; TV stand; Kenmore sewing machine w/table; 4 drawer filing cabinet; dressing table; 2 complete bedroom sets; couch/loveseat combo; sm. electric fireplace; dining table w/chairs; misc. sm. kitchen appliances.  
**MISC.:** LOTS of Christmas and other holiday décor items (lights, wreaths, etc); sled; cooler; Chapman HS duffel bag; Chapman HS yearbooks; Casio tabletop keyboard; Roadmaster 18 speed bike; Spa massager for chair; aluminum crutches; misc. jewelry & watches; misc. K-State items; Christmas Story "Leg" lamp; other misc. items.

Check us out on Facebook & Online for more info [www.kscrossroads.com](http://www.kscrossroads.com)  
[www.facebook.com/KScrossroadsauctions](http://www.facebook.com/KScrossroadsauctions)

 ANDRIA ZIMMERMAN, Listing Agent 720-648-2249 ANDREW SYLVESTER, Auctioneer, 785-456-4352 TERRI HOLLENBECK, Broker/Owner, 785-223-2947	 SCAN ME
---	-------------

# UPCOMING LAND AUCTION!

- Yates Center - 11/9/23 - 2:00pm ONLINE: 77+/- acres of pasture and heavy timber. Great Sandy Creek hunting tract with good pasture. Seller: Stowell Family
- Burlington - 11/10/23 - 10:00am ONLINE: 205+/- acres in 2 tracts or combinations thereof. Prime Neosho River cropland and build site. Very high percentage of Verdigris soils! Seller: Garrett's River Bend
- Neosho Falls - 11/13/23 - 2:00pm ONLINE: 99+/- acres of premium Neosho River cropland and timber. Tremendous waterfowl and whitetail tract!
- Gridley - 11/14/23 - 1:00pm Live Auction - SAUDER CENTER, MADISON: 1,720+/- acres of pasture, tillable, hunting and residence in 8 tracts or combinations thereof. Something for everyone! Seller: Sauder Estate
- Council Grove - 11/15/23 - 1:00pm Live Auction - 4H BLDG, COUNCIL GROVE: 2 tracts totaling 420+/- acres. High-quality grass, excellent cropland and hunting. Seller: KLM Investments (Family of Mack & Sara Colt)
- Burlington - 11/16/23 - 10:00am ONLINE: 2 tracts totaling 141+/- acres of prime river-bottom and 2nd bottom tillable. Highly efficient tracts! Seller: Buckles Family
- Iola - 11/16/23 - 4:00pm ONLINE: 115+/- acres of upland tillable with utilities nearby. Beautiful views with excellent location near Highways 58 & 169. Seller: Sara Colt Trust
- Burlington - 11/20/23 - 10:00am ONLINE: 471+/- acres of river-bottom tillable, upland tillable and pasture selling in 3 tracts or combinations thereof. Great development potential on the upland tracts! Seller: Holloway/Noel Families

## LIVE AUCTION COMING EARLY DECEMBER:

• 475+/- acres of Neosho Valley cropland with Mason and Verdigris soils near Humboldt. Seller: Mih Trust

 VaughnRoth.com	SELLERS OF PREMIUM FARMS & RANCHES 620-888-3040
--------------------	--

## HARMS PLAINVIEW RANCH

Customer Driven... Industry Focused

ANGUS SIRES  
 EMERALD • JUSTIFIED • TAHOE

CHAROLAIS SIRES  
 AUTHORITY • ICON • LUNCH MONEY

RED ANGUS SIRES  
 ENERGIZE • FRANCHISE • STOCKMARKET

Calving season is here, which means selecting your next herd sire is on the horizon. Make your choice at HPR... where the dams, granddams and great-granddams of every bull we offer are raised and maintained on our ranch. We combine the latest science and technology available with real-world, hands-on stockmanship and experience... progressive and practical. Purchase your bulls where the females and our customers always come first.

## 2023 Fall Customer Convenience Bull Sales

ANGUS • CHAROLAIS • RED ANGUS

Contact us to schedule a time to make your selections.

[www.HARMSRANCH.com](http://www.HARMSRANCH.com)

Mark Cell - 620.382.6388 • Kim Cell - 620.382.5373  
 Ranch - 620.924.5544  
 Harms Plainview Ranch • Lincolntonville, Kansas

E-Mail - [hprbulls@tctelco.net](mailto:hprbulls@tctelco.net)  
 Please check our Harms Plainview Ranch Facebook page and @harmspainviewranch Instagram page for frequent updates.





## Molly and the High Tech Bobcat (Part 2)

As soon as I realized what was stalking us, I stood up in full view of that bobcat. I still had my re-volver trained on him, and fully expected him to bolt and disappear, as I have experienced with bobcats before. Not this guy! He looked me right in the eyes, looked at the dog, looked at me, looked at the still fighting mad dog, and decided he was going to have a beagle-terrier for supper! It was that mo-

ment that I figured these two have met before, but ol' Big Jack isn't around!

Now this cat was only about 30 feet away when we were staring each other down. As he resumed his stalking advancement, I yelled "Git!" to which the dog increased her canine warnings. That cat had no intention to leave this "doggy du jour" without at least a sampling of her flesh!

"Boom!" the revolver spoke, and the cat immediately crumbled straight to the ground. I pulled the

hammer back, still covering the cat, waiting. Suddenly the dog was silent, probably due to the report of the shot. I stood there for several breathless seconds waiting to make sure that cat wasn't going to move again.

Then there was an explosion of grass and leaves and the cat burst into a full run, straight away! "Boom!" As he got to the edge of the creek bank another "Boom!" The cat disappeared over the bank. I cocked the revolver once more and cautiously approached the spot where the first shot put the cat down and found blood that confirmed he was seriously hit. I advanced toward the place I'd seen him disappear over the bank, still in a ready position. Looking over the edge I could see the crumpled figure, head in the water, still as could be. I still waited a good long minute and, satisfied the predator was dispatched, holstered my revolver and reached

down, grabbing a hind foot and heaved the nearly 30-pound cat up in the air, throwing him away from the creek, and un-wittingly, toward my poor dog who thought that cat was still going to get her!

I can still envision, in slow motion, the sight of that cat sailing through the air above me as I was lying on the ground to reach over the bank, and catching sight of something that made my heart race faster than the previous 90 seconds that had led us to this point. There was a curious looking black box attached to the bobcat's throat. Still cautiously making sure this cat isn't going to revive once more, I took a closer look and discovered that this animal was wearing a radio collar!

Now I'm getting a bit worried! I must admit, I had considered the advice of about half a dozen friends, and my father-in-law, to cut that collar off and throw it on the next coal train that cruised down the Kaw Valley track, but I just couldn't do it. I called the sheriff's

office and told dispatch I needed the game warden. He called back in about 30 minutes.

I explained the situation, and he said, "Well, I guess you'll be needing me to come out and tag him for you," a tag being needed to legally sell a bobcat pelt. "Actually," I replied, "I don't really care about selling this cat, but he is a very special bobcat."

"How's that?"  
"This cat is wearing a radio transmitter around his neck." A long silence followed that statement, then the officer responded, "Oh..." and the worrying silence followed even longer. "Well, I guess I'd better come get that then." After trading a few more questions the Warden said he would pick up the cat and the collar next morning, which he did.

A couple weeks later my wife took a call from a lady who asked questions about the location and behavior of the cat. Nothing else was learned until the following year when I harvested another, one of three that were raiding

my muskrat traps in one of our ponds. I dutifully called the Warden once again and he came out to tag my cat.

While he was here I quizzed him about the collared cat from the year before. Turns out there were three kittens, seized from someone who did not have a rehab permit. The state had turned them over to the University of Kansas who collared them to study behavior of human-raised wildcats that had been released back into the wild.

Two were taken in similar circumstances as mine, and the third was taken by a trapper down on Stranger Creek, all within a 15-mile radius of the supposed release site. I was a little bit angry and also sad to learn this, and retorted, "I wonder if they realized they signed the death warrants for three cats with no fear of humans." The bobcats were all taken the same winter.

Kirk Sours is a ranch manager and columnist in northeast Kansas. Email him at: [sours.kirk@yahoo.com](mailto:sours.kirk@yahoo.com).

**CrustBuster**  
**SPEED KING INC.**  
Drills, Carts & Tenders

Drills 10' to 60'

Seed Tenders

Conveyors

USC LLC Field Loader

**Bill Burdick Sales**  
Wetmore, KS  
Contact 785-547-5082  
For all Your Fertilizer, Grain & Seed Needs

**HUNTER'S PARADISE!!**  
**ABSOLUTE REAL ESTATE AUCTION**  
SUNDAY, NOVEMBER 12, 2023 \* 2:00 PM  
(Marcel & Barbara Tajchman Estate)  
2305 12th Avenue - LINDSBORG, KANSAS  
80 Acres (76.9 taxable) with newer 60' x 42' metal Cleary building, working windmill with well.  
Go to: [SOLDBYWILSON.COM](http://SOLDBYWILSON.COM) for pictures  
**Wilson Realty & Auction Service**  
PO Box 1695, Salina, KS 67402-1695 \* OFFICE - 785-823-1177  
LONNIE WILSON, Owner/Broker/Auctioneer - 785-826-7800

**BUTLER COUNTY LAND AUCTION**  
**240+/- ACRES \* Between Cassoday & Burns, Kansas**  
**THURSDAY, NOVEMBER 16, 2023 - 6:00 PM**  
**AUCTION LOCATION: EL DORADO CIVIC CENTER**  
201 E CENTRAL AVE, EL DORADO, KS 67042

**PROPERTY DESCRIPTION:** 240+/- acres of native pasture along NE 150th west of Cassoday in Butler County, Kansas. This gently rolling stretch of the Flint Hills is known as some of the best seasonal cattle grazing in the world. Water is provided by a pond. Access is blacktop along the north boundary and township gravel road along the west boundary. There is a small creek/draw in the very northeast corner of the property that is timber lined. 60+/- acres in the southeast corner of the property is brome grass and fenced separate from the balance of the property, all native Flint Hills pasture.  
**LAND LOCATION:** From Burns, 3 miles south on HWY 77 to NE 150th, 4 miles east to the property.

**JEREMY SUNDGREN** 316.377.0013  
**JOE SUNDGREN** 316.321.7112  
**SUNDGREN REALTY**  
Land Brokers

Visit [www.sundgren.com](http://www.sundgren.com) for More Details, Pictures, Maps & Terms  
**LIVE & ONLINE BIDDING AVAILABLE**

## Governor announces initiative to invest in water quantity and quality

Governor Laura Kelly and the Kansas Water Office have announced the launch of an initiative to invest at least \$1.5 million through funding partnership opportunities for projects that advance the implementation of the 2022 Kansas Water Plan. The plan is a five-year blueprint to ensure a reliable, quality water supply. The Kansas Water Plan Partnership Initiative (KWPP) will invest State Water Plan Fund resources into projects centered around the guiding principles outlined in the 2022

State Water Plan, which include conserving and protecting the High Plains Aquifer, improving state water quality, reducing vulnerability to extreme events, and increasing awareness of Kansas water resources.

"My administration is committed to addressing our state's water crisis," Kelly said. "The Kansas Water Plan Partnership Initiative provides resources to address key water quantity and quality issues at the state and regional level while protecting our water sources for

future generations." In addition to the guiding principles, Regional Advisory Committees across the state have established water-related goals specific to their region, which applicants can cite when submitting their proposal.

"Each of the goals and recommended actions set in the Kansas Water Plan and by the Regional Advisory Committees seeks to address issues that affect the livelihood of Kansans," Connie Owen, director of the Kansas Water Office, said. "This program helps organizations throughout the state to take action in addressing those issues."

Eligible applicants include agricultural commodities, advocacy organizations, colleges/universities, conservation organizations, non-profit organizations, private sector partners, public governmental entities, and water-related districts.

KWPP applications are encouraged to include a minimum of 50% match, a succinct project proposal, a proposed budget, and a project schedule. Applications submitted by December 29, 2023, will be considered for this initial round of funding, with submittals after this date to be evaluated pending available funds. Entities can apply via the Kansas Water Office website at <https://arcg.is/1CnXW9>.

To learn more about the Kansas Water Office, visit [kwo.ks.gov](http://kwo.ks.gov).

**PUBLIC AUCTION**  
**SATURDAY, NOVEMBER 4, 2023 — 10:00 AM**  
**The Living Trust of Max & Bonnie Grossnickle, they have moved and will sell the following Tractors, Equipment, Shop Tools, Antique, Vintage Items & Household Items at Auction**  
Located at 12655 80th Road, ERIE, KS. Directions: From the intersection of 59 Highway and 80th Road, go 2.4 mile West or from Meade Road and 70th go 1 mile North to 80th Road then .40 mile West to address.  
Tractors and Equipment will sell starting at 12:00  
**TRACTORS & EQUIPMENT:** 2007-2008 John Deere 5603 with 542 Loader, 4x4 MFWD, S# R268294, 4186 Hrs., Very Nice Tractor; Ford 661 Workhorse Tractor, 4 Cylinder, gas, 5 Speed, Live PTO, Good Tires; John Deere Model A Tractor, Newer Rear Tires, S# 674485, Runs but has wiring issue; 3 pt 8' Road Boss Grader; 3 pt Sprayer; 10' Pull Type Rotary Mower.  
**MOWER & LAWN EQUIPMENT, SHOP EQUIPMENT & TOOLS, COLLECTIBLE, HOUSEHOLD, MISCELLANEOUS**

For Complete Sale Bill & Pictures go to websites:  
[www.lmarshallauctionandrealty.com](http://www.lmarshallauctionandrealty.com) or [www.kansasauctions.net](http://www.kansasauctions.net)  
<https://www.globalauctionguide.com/kansas-auctions>  
or email: [marshallauction@twinmounds.com](mailto:marshallauction@twinmounds.com)  
Find us on Facebook @ Garretson Auction Services

Newton Family Concessions & Rest Room Available  
**OWNERS: MAX & BONNIE GROSSNICKLE LIVING ESTATE**  
**GARRETSON AUCTION SERVICE, LLC**  
On Line and In Person Auctions Available  
**AUCTIONEERS:** Mark Garretson, 620-433-2561  
Truston Garretson, 620-212-3641 ~ Larry Marshall, 620-485-6136  
**CLERKS & CASHIERS:** Gayle Garretson, Dawn Wrestler

**Life doesn't stop for an injury.**

Come see us in booth #50 at the Grass & Grain Farm Show!

**AVOID SURGERY!**  
**Use Your Body's OWN Stem Cells.**

- Knee arthritis
- Partially torn rotator cuff
- Degenerative disc disease
- Chronic Pain
- And more...

ARE YOU A GOOD CANDIDATE? CALL US TODAY! 785.320.4700

Schedule a **FREE** Consultation or Visit [KansasRMC.com](http://KansasRMC.com) to learn more.



**Kansas Regenerative**

MEDICINE CENTER

Manhattan • Kansas City



Andrew Pope, M.D.



Steve Peloquin, M.D.

**AUCTION**  
**SATURDAY, NOVEMBER 4, 2023 — 10:00 AM**  
**LOCATION: 107 High St, ODELL, NEBRASKA (3 Blocks east of Community Center)**

**PICKUP (1-OWNER)**  
2001 Chev K2500 Silverado 4-DR ext. cab 6.6 Duramax dsl pickup, VIN: 1GCHK29101E306592, Allison 6-Spd, electronic 4WD, 97,174 miles, gray in color w/leather interior & electric accessories, FG top, Goodyear 245/75R16 rubber (Good) \* NICE CLEAN UNIT!  
**FISHING BOAT, TRAILER & MOTORS (1-OWNER)**  
2002 Crestliner V-Hull 16'6" aluminum fishing boat, console w/ windshield & toggle switch dash, 3-captain swivel fishing chairs, live bait well, bilge pump, bikini top, 40HP 4-stroke Yamaha motor, 4-stroke Mariner tiller engine, MinnKota power drive trolling motor w/foot control & fitted cover; 2003 ShoreLand'r aluminum single axle boat trailer, VIN: 1MDAHR123A230144  
\* **ABOVE SELLS AS COMPLETE UNIT**

**SKID LOADER**  
Owatonna 330 Mustang hydro-static skid loader, Serial # 4431, Onan gas engine.

**UTILITY TRAILERS**  
2017 Carry-On 5.5'x10' ball hitch wood deck trailer w/rear ramp & 5-bolt wheels (1-OWNER); Ball hitch 8' Chev box single axle trailer; Ball hitch single axle 48"x8' box trailer w/rear ramp; Ball hitch 6' Chev box single axle trailer; M/W ball hitch 2-wheel cement mixer.

**HONDA (1-OWNER)**  
2007 Honda 4-wheeler, VIN: 1H-FTE350174011221, Good; Cycle Country 48" ATV push blade.

**LAWN & GARDEN, LOG SPLITTER, GENERATOR**  
Generac elec start 7500EXL generator, power surge alternator & 1350 surge watts; 2-wheel Forest King 22-ton 24" stroke 6.5HP gas engine log splitter; Hustler Raptor SD Zero Turn 25HP 54" riding mower, 178 hrs w/bagger; Craftsman PYT 9000 24HP 42" riding mower, 429 hrs w/bagger; FIMCO 20-gal P/T 2-wheel tank sprayer w/elec pump, boom & hand gun; Ball hitch 2-wheel 32" x 56" lawn cart; Earthquake MC43 power hoe;

P/T lawn spreader; Craftsman 3.5HP 22" mower; Husky front tine tiller; Stihl gas powered leaf blower.

**GUNS MEAT, PROCESSING, FISHING EQUIP.**  
Savage Mark II .22 bolt action rifle w/Cabela 3-9x40 scope, SN:3096446; Gamo Velocity 1200 air rifle, 1000 FPS w/ Gamo scope; Remington model 700 black powder rifle w/Cabela Multi Reticle scope, SN: ML247393; Daisy BB gun, misc. ammo; (2) pop-up hunting blind; Cabela 22 elec meat grinder w/ tenderizer (Like New); Cabela tub meat mixer; Cabela 5lb sausage stuffer; Cabela jerky blaster; LEM dehydrator; Game Saver food sealer; small counter scales; fishing rods/reels; H/M spinners & lures; numerous spinner supplies; hip waders; dip net; Coleman lanterns; Motor Guide trolling motor; (7) Do-It mold walking sinkers; Jiffy gas powdered 7" ice auger; CLAM 2-person ice fishing hut; Frabill ice fishing sled; Bubba elec filet knife; Lowrance fish finder.

**HOUSEHOLD GOODS**  
Frigidaire 10 cu ft refriger/freezer; Kenmore 12 cu ft chest freezer; Kenmore dehumidifier; Bellini ice maker; flat door 28"x78" curio cabinet (Nice); Sony 18" flat screen TV; Magnavox octagon cabinet stereo; queen size bedding w/metal head board; (2) wood arm upholstered high back chairs; pine rocking chair; end tables; Air Mast exercise bike; Complete Ten exerciser; upholstered van seats; wheel chairs; Bissel Pro Heat 2X carpet cleaner; glass stemware; Avon: nativity set, porcelain eggs, birds;

4-season flowers & bells; duck figurines; (22) Danbury Mint dated Husker ornaments; crock jugs; enamel bowl; numerous puzzles.

**TOOLS & MISC.**  
Lincoln elec AC/DC arc welder; C H 3/4" HP air compressor; Chicago 1/2" elec impact & 7 1/4" circular saw; Milwaukee elec drill; DeWalt 20 V brushless drill; B/D drill; Schumacher 10-30-50 amp battery charger; Stihl MS180C chain saw; bench grinder; Rt. Angle grinder; Craftsman: 11-drawer tool chest; 8-Pc comb 11/16-1 1/2" wrench set, metric wrenches, belt sander & sockets; numerous S&K - Snap-On sockets; Black Hawk comb wrench set; Pittsburg torque wrench; Diamond plumber pliers; Reed electrical fastener set; Dayton 17-Pc hole saw set; drill bit sets; gear puller; tap-n-die set; trouble light w/cord reel; freight cart; battery cables; Vise Grips; Weller Dremel style tool; Makita elec Sawzall; Skil HD circular saw; chisels-punches; tie down straps; pipe taps; Fluke multi meter; palm sanders; hollow steel punches; Rigid threader, 18 & 24" alum pipe wrenches; bolt cutters; bar clamps; HD ext cord; 24" x 36" 7-drawer utility cabinet; nut & bolt assortment cabinet; oxygen tank cylinder; hi-lift jacks; 3-ton hyd floor jack; acetylene torch w/hose & gauges; cable-come-along; cistern well pump head; ball hitch receiver; chain binder; 18-drawer bolt cabinet; 30" Ford accessible wheel chair lift; tree pole saw; lawn & garden chemicals; axe-splitting mallets-shovels-rakes-post hole cleaner & etc.

**TED & RACHEL BRIGHT** Phone: 402-766-4814  
Log on to: [www.beatrice77.net](http://www.beatrice77.net) (Click on "The Auctioneers")  
(FOR FULL LISTING W/PICTURES)  
Clerk: Ton - Sol Clerking, Ph: 402-239-8741  
**LUNCH & RESTROOMS ON THE GROUNDS**

**TERMS:** Cash or Check with proper ID. No property removed until settlement is made. All bids off at Buyer's Risk. Not responsible for accidents or theft.

**THE AUCTIONEERS \* Beatrice, Nebraska**  
Rick Jurgens Dennis Henrichs Gale Hardin Ryan Sommerhalder  
402-520-0350 402-239-8741 402-520-2911 402-335-7937  
**THE AUCTIONEERS FOR COMPLETE AUCTION SERVICE!**



# Central Kansas Beef Summit to be held in Beloit

Make plans to attend the Central Kansas Beef Summit on Tuesday, November 14th, 2023, from 9:00 a.m.-3:15 p.m. The event will be highlighted by a presentation on marketing strategies for beef cattle by Lynn Langvardt of JC/CC Livestock Sales and a Market Outlook and

Update from K-State specialist Dr. Glynn Tonsor. In addition to the speakers, the program will offer breakout sessions where attendees can pick and choose which topics apply to them. This year's topics will include a presentation and demonstration of the Ag Manager deci-

sion tools by Robin Reid with the KSU Agricultural Economics Department, Rob Paxson with 701x will present on the company's record-keeping system and products, and Will Boyer with KSU will discuss utilizing drones as a way to manage your pasture. The program will end with

a Q&A panel with local livestock producers and industry professionals discussing technologies and strategies that are being implemented in the beef industry. The summit will be held at the Beloit Methodist Church at 801 N. Bell St.

This program will be a

collaboration among numerous K-State Research and Extension districts and will give producers a better chance to not only hear from industry leaders, but to also take part in conversation with one another. Make sure to RSVP by November 7th to reserve a meal. The cost to attend will be \$10 or late registration will be \$15 at the door. For more information on the event or to register, visit

the Post Rock Extension website or call Livestock Production agent Blaire Todd at 785-738-3597. This event has been generously sponsored by several agribusinesses in collaboration with K-State Research and Extension Districts, Central KS, Cottonwood, Midway, River Valley, Phillips/Rooks, and Post Rock. They look forward to you joining them for the program.

## KDWP to host cooking competition featuring wild game, foraged foods

Whether grilled, smoked, poached, canned or dehydrated - wild foods procured from the Kansas outdoors will be on showcase at the Kansas Department of Wildlife and Parks' first-ever cooking competition in Lawrence on Sunday, November 19, 2023. Whether you're new to the culinary world, a seasoned home cook or a classically trained chef, KDWP invites you to compete at this free community partnership event hosted by KDWP, Baker University Wetlands Discovery Center, Native Lands Restoration Collaborative, the U.S. Department of Agriculture and Haskell University.

The competition will be held at Baker University Wetlands Discovery Center, 1365 N 1250 Rd,

in Lawrence from 11 a.m. to 4 p.m. Competitors may submit entries in any of the following categories: Wild game, wild fish, wild plants, wild mushrooms, wild sweets (fruit, berries, dessert, etc.) and wild invasive/nuisance species. Entries will be judged by a panel of local expert foragers, with prizes awarded to the top entrant in each category, as well as a special prize for the "Community Favorite" entry.

Interested parties may register for the competition by visiting pro-grams. ksoutdoors.com/Wild-Foods-Cook-Off.

In addition to the wild foods cook-off, the day's activities will also include mini work-shops on native lands habitat restoration, foraging, and plant and insect identification. A

formal land acknowledgment, and presentation on Baker Wetlands history, will also be provided before cook-off winners are formally announced. The day's events, including the cooking competition, are offered at no cost to the public; and, attendees do

not need to register a dish in order to taste entries and/or participate in the day's work-shops.

For questions, contact event organizer and KDWP Education specialist Amy Bousman at amy.bousman@ks.gov.

### PAXICO INSURANCE AGENCY

We Work For You

(785) 636-5345 PH

Paxico, KS 66526

FARM • RANCH

AUTO • LIFE • COMMERCIAL

Scott Murray

insuringkansas@gmail.com

### LIVE ON-SITE CONSIGNMENT AUCTION

**SATURDAY, NOVEMBER 4, 2023 \* 9:00 AM**

LOCATION: 100 Industrial Parkway,  
GALLATIN, MISSOURI 64640

EXPECTING 800 PIECES, MANY INDIVIDUAL CONSIGNMENTS,  
RETIREMENT, ESTATES, SELLOUTS

Expecting 75-100 Tractors inc. JD, Case IH, McCormick, NH, Ford, Kubota, MF, Challenger, Allis, Agco & Others.  
Loaders, Combines, Corn Heads/Row Crop, Platforms, Header Trailers, (2) Farm Retirements, Planters, Drills, Seed Tenders, Augers, Conveyors, Grain Vac, Auger Wagons, Gravity Wagons, Manure Spreaders, Applicators, Hay Equip. Balers, Square Balers, Mowers, Rakes, Tedders, 3 Pt. & Misc. Equip., Brush Cutters, Finish Mower, Disks, Vertical Tillage, Field Cultivators, Other Tillage, Forage & Feeding Equipment, Grinder Mixers, Mills, Construction, Skid Steers, Excavators, Dozers, Backhoes, Wheel Loaders, Brush Cutters, Vehicles, Grain Trucks, Trailers, ATVs, Lawn Mowers, Livestock Equip., Over 150 Skid Loader Attachments!

See Last Week's Grass & Grain for listings & check our website:

BandEquipmentSales.com

Office: 660-663-3363  
Shay Esbeck: 660-605-0839 \* Justin Harlow: 660-605-2346  
Find us on facebook @ BS-Equipment-Auctions  
Online bidding available through EquipmentFacts.com

## AUCTION

**SATURDAY, NOVEMBER 11, 2023 - 10:00 AM**

**13636 262nd, LAWRENCE, KANSAS**

From N. Lawrence US Hwy 24/40 4 miles to Loring Rd., turn West on Loring Rd. to 262nd, North on 262nd to Auction! **WATCH FOR SIGNS!**

1961 Ford 961 Powermaster Row Crop Tractor, gas, 3 pt., live power, remote hydraulics, 46 1/2 hp. Nice!; 3 pt. Woods RC6 6 ft. Rotary Mower; 3 pt. 2-Bottom Plow; Allis Chalmers pull-type w/cylinder 10 ft. Disc; New Holland 4-Wheel Hay Wagon (7x14) Nice!; 8 ft. 2-section drag harrow; Brute 22 Ton CR950 Hydraulic Log Splitter on wheels, vertical/horizontal Nice!; 2 wheel Cement Mixer w/electric motor; 3 section 4 ft. Scaffolding w/wheels, flat feet/wood planks; Coleman Powermate 6250 10hp. Portable Generator; Dyna-Glo Pro 125k space heater; Haivala 4 ft. concrete bull float w/handles; ss concrete slider kneeboards; Surveying transit/tri-pod/rod; 4" jointer; power/hand tools; wheel barrows; Dremel saw; Economy Hay Trolley; Hay Forks; 3 - OAKES #503 Chicken Waterers; Bee Keeping Supplies: 5 wooden hives/smoker/helmet/gloves; **many items too numerous to mention!**

**AUCTION NOTE: Very Clean Smaller Auction ... BE ON TIME!**  
Lg. Bldg. to sell from in Case of Inclement Weather! Loader Tractor!

SELLER: JEFF & CARMEN SHULTZ

Consigned by Neighbor: 3 pt. Kubota 4' box blade; Kubota ATV hyd. frt. blade; 3-in-1 40" sheet metal roller.

ELSTON AUCTION CO. \* (785-218-7851) (785-594-0505)  
"Serving Your Auction Needs Since 1994"

Please visit us online: [www.KansasAuctions.net/elston](http://www.KansasAuctions.net/elston) for Pictures!

### GREENWOOD COUNTY LAND AUCTION

**822+/- ACRES \* 5 Tracts between Severy and Piedmont**

**FRIDAY, NOVEMBER 17, 2023 - 2:00 PM**

AUCTION LOCATION: GREENWOOD HOTEL,  
300 N MAIN ST, EUREKA, KANSAS 67042

TRACT 1: 160.6+/- acres with tillable farm ground, 2 ponds, pasture, almost 1/4 mile of Salt Creek running through, a second smaller creek, trees and abundant Kansas wildlife.  
TRACT 2: 145.9+/- acres of agriculture/recreation property recently used as cattle grazing pasture or potential tillable farm ground. Water is provided by 2 ponds and a small creek.  
TRACT 3: 73.7+/- acre tract featuring a really nice, deep and clear 2 acre pond! The balance of the property is native pasture, rolling terrain, and a timber lined draw.  
TRACT 4: 233.7+/- acres of native pasture with a large 8.5 acre lake, 6 additional ponds, rolling terrain, and pockets of timber that attract and hold Kansas whitetail deer.  
TRACT 5: 198.9+/- acres with big hills, a large centrally located 2 1/2 acre pond, pasture and a 2 story farmhouse. Great opportunity to invest in a rural residence with pasture!

JEREMY SUNDGREN  
316.377.0013

JOE SUNDGREN  
316.321.7112

Visit [www.sundgren.com](http://www.sundgren.com) for More Details, Pictures, Maps & Terms

LIVE & ONLINE BIDDING AVAILABLE

### MEINHARDT FARM EQUIPMENT

SAVE THE DATE!!

TUESDAY, NOVEMBER 28, 2023

OVER 1000 LOTS OF HORSE DRAWN, ANTIQUE, & VINTAGE TRACTORS AND FARM EQUIPMENT SELLING!

BOB EICHENBERGER, SALES REP

785-229-5892

Bob.Eichenberger@BIGIRON.com

TUESDAY, NOVEMBER 28, 2023

OPEN HOUSE INFORMATION COMING SOON!

MEINHARDT FARM EQUIPMENT

WAMEGO, KANSAS

## Bobcat®

### WHITE STAR

# VISIT US AT

## THE GRASS & GRAIN FARM & RANCH SHOW

PARTS - SERVICE - SALES - RENTAL

WHITESTARMACHINERY.COM

## TOP CITY LOGISTICS

### Delivering Custom Shipping Solutions

With decades of experience in the shipping industry, and armed with a dependable network of carriers, **Top City Logistics** is here to conquer even your most challenging shipping requirements.

- ✓ HOTSHOT
- ✓ STEPDECK
- ✓ HEAVY HAUL
- ✓ OVER SIZE

- ✓ LTL
- ✓ FLATBED
- ✓ REEFER
- ✓ DRY VAN

SCAN ME

Mention this ad and receive

\$50.00 off your first shipment

with Top City Logistics

## Because Your Ship Matters!

www.TopCityLogistics.com

833-734-2274



**grassandgrain.com**  
place a classified ad renew a subscription

## FOR SALE:



**New 2019 International 7400 6x6 Workstar**  
DT 530 engine, 54,000 GVW, air, winch,  
2-speed transfer case, 6-speed, turns tight

### CONTACT

Myron Zumbach: 319-480-1673 • Dave Zumbach: 319-480-1426

# Respiratory challenges in horses, part 1: equine influenza

By **Tony Hawkins, DVM,**  
**Valley Vet Supply**  
**Technical Service**  
**Veterinarian**

Just like with people, horses are more likely to combat respiratory challenges in the colder months. Besides the drop in temperatures alone, other contributing factors include the drier air and decreased immune function in the lungs. When we're looking at respiratory challenges impacting horses, the greatest risks include equine influenza, Rhinopneumonitis (Rhino) and strangles. To

help horse owners understand each, we're looking at these three conditions closely within a three-part article series – covering aspects from disease spread to signs, treatment considerations and prevention. Let's begin with the topic of equine influenza.

### Background

The equine influenza H7N7 subtype was first reported in the 1950s and last reported in the 1970s. The Centers for Disease Control and Prevention reports "(H7N7) is now considered to be extinct. The EIV H3N8 subtype was first reported in horses in the United States in the 1960s and still spreads in horses globally today."

Equine influenza is spread from horse to horse through contact with infectious nasal secretions. This can occur through direct, nose-to-nose contact with an infected horse. Coughing is also a very common cause of spread, as well as contact with what we call fomites – meaning inanimate objects like feed buckets, brushes, tack, clothing and hands – that have those nasal secretions on it. It's been report-

ed that a horse's cough can travel as far as 150 feet, so it doesn't have to be nose-to-nose contact for this disease to spread. After horses are exposed, it's only a one- to three- day incubation time and should they become infected, they can shed for up to 14 days. Equine influenza attacks the normal immune functions of your horse's lungs, which causes an increased susceptibility to secondary bacterial infection and bacterial pneumonia.

### Signs

A cough is a pretty classic sign of flu. Horses also may demonstrate fever, nasal discharge, lethargy and loss of appetite. Some horses that become infected may not show any symptoms; they are called asymptomatic shedders.

### Treatment

Most importantly, horses will need rest and supportive care, which will differ a little bit from horse to horse and case to case. Rest is very important. You don't want to exercise those horses or add any stress because that just makes things worse. The most common recommendation from the

experts is to provide one week of consecutive rest for every day of fever, even if they start feeling better before that rest period is over. For horses experiencing fever or secondary bacterial pneumonia, non-steroidal, anti-inflammatory medications and antibiotics would be needed. Work closely with your veterinarian on treatment options available.

### Prevention

To prevent equine influenza, consider the steps we take to shield ourselves from the flu.

Vaccination plays a very important role in prevention of disease. Should vaccinated horses become exposed, either one, it's not as serious should they become infected, or two, the vaccine will hopefully prevent the disease from taking hold. As for vaccination timing it really comes down to a few things – the immune status of the horse and the risk of exposure. I recommend annual vaccination for horses with lower risk and twice-a-year vaccination – every six months – for horses with high risk of exposure or those who may have questionable immune status. The following groups of horses I would consider high risk and recommend they receive twice-yearly vaccination:

- Young or senior horses
- Horses traveling frequently or have exposure to those who do
- Those residing in boarding/training barns with frequent new arrivals

Cleaning is very important when you're caring for animals. Clean and disinfect your tack, buckets and anything that your horse or others could come in contact with. If you have any sick animals on the premises, you really need to care for the healthy ones first and then care for the sick ones last, so you don't pick up the infectious materials and take it to your healthy horses.

New arrivals need to be quarantined for at least two weeks from your resident horses. And if you take your horse somewhere else and then come back home, quarantine that horse away from your other horses at home for at least two weeks.

Through vaccination and best management practices, you can help prevent your horse from equine influenza risk. Stay tuned for part two of this series.

Visit ValleyVet.com to continue learning and for your equine health needs.

## 2-DAY AUCTION

SATURDAY, NOVEMBER 11 & SUNDAY, NOVEMBER 12, 2023  
10:00 AM BOTH DAYS

Auction held at the commercial building located at the Fairgrounds in BELLEVILLE, KANSAS

**SATURDAY NOV. 11, 10 AM TOYS**

**Cast iron banks:** Buster Brown; Campbell Kid; Indian; Clown; animals; many others; **Cast iron toys:** Stoves; airplanes; trains; trucks; Arcade; farm tractors; motorcycles; safes; others; **Tin:** 20's, 30's & 40's cars & trucks; Texaco truck; Smith Miller trucks inc; Bank Of America; Model fire truck; Mac trucks; IH 70's pickup; Tru Scale IHC truck; Coop semi; Army Supply Corps truck; Tonka cement mixer; JD implement truck; livestock semi; Handy Andy crane; steam engine; steam shovel; Singer sewing machine w/box; refrigerator bank w/box; US mail banks; Hopalong Cassidy watch; Roy Rogers yoyo; Dog Patch

**SUNDAY NOV. 12, 10 AM**

Majic Lantern in wood box; **Crocks inc:** Red Wing, UHL & Blue Ribbon chicken waters; 5 & 6 gal salt glaze churns; 4 & 6 gal Monmouth churn; 2 gal Western churn; 2-gal Red Wing churn; 3 & 5 gal birch leaf churns; 2 gal Buckeye churn; Red Wing lay down waters; 2 gal elephant ear crock; 3 gal Red Wing crock; Splash Proof buttermilk feeder; crock hot water bottle; butter crocks; crock jugs; cat-tail pitcher; The American No.

NOTE: Frank started collecting in the 1950's. There are many quality collectibles. We will sell toys on Saturday, crocks, collectibles will be on Sunday. This is one of the best collections we have sold in a long time. FOR A MORE COMPLETE LISTING AND PICTURES CHECK OUR WEBSITE AT [www.thummelauction.com](http://www.thummelauction.com)

**FRANK J. HARTLEY ESTATE**

Auction Conducted By: THUMMEL REAL ESTATE & AUCTION LLC, 785-738-0067

**Band parts; FARM TOYS:** Many 50's & 60's farm toys many like new; Massey Harris model 26 combine in box; Tru-Scale corn picker in box; Tru-Scale tractor & loader in box; Tru-Scale elevator in box; JD tractors: (Industrial; 4-wheel drive; 60 crawler; 2550 in box; 4020; several 1960's & 70's tractors); JD toys: corn picker, 2 & 4 bottom plows, discs; planter, baler, mower in box; rear blade in box; baler in box; spreader in box; JD 6600 combine; JD pull combine w/ auger; JD Patio 140 & 141; JD grader in box; JD scraper in box; Tru-Scale; Oliver equipment baler, combine, Superior drill; New Holland combine & swather; New Idea manure spreader; New Holland self propelled swather &

towns collectibles; airplane pictures; assortment glass; Service Man flag; assortment books; Big Little books; Billy Whiskers books; watch fobs (many early tractor, construction, DeLaval, Jersey Crème, others); farm belt buckles; pens & pencils; sleigh bells; pocket knives; Edison cylinder phonograph; 30 & 40 Dazey churns; lightning rod balls; pig weather vane; bird figures; animal figures; duck decoys; fishing reels; many other collectibles.

combine; IH tractors; McCormick 2 bottom plow in box; IH spreader in box; McCormick Cub in box; IH implements, 2 pt 3-bottom plow; IH plastic van; IH Historical set; Case tractors; Oliver implements (pull type combine; side delivery rake; baler); Allis Chalmers; Steiger; White; Ford; Minneapolis crawler in box; picker, 2 & 4 bottom plows, discs; planter, baler, mower in box; rear blade in box; baler in box; spreader in box; JD 6600 combine; JD pull combine w/ auger; JD Patio 140 & 141; JD grader in box; JD scraper in box; Tru-Scale; Oliver equipment baler, combine, Superior drill; New Holland combine & swather; New Idea manure spreader; New Holland self propelled swather &

combine; IH tractors; McCormick 2 bottom plow in box; IH spreader in box; McCormick Cub in box; IH implements, 2 pt 3-bottom plow; IH plastic van; IH Historical set; Case tractors; Oliver implements (pull type combine; side delivery rake; baler); Allis Chalmers; Steiger; White; Ford; Minneapolis crawler in box; picker, 2 & 4 bottom plows, discs; planter, baler, mower in box; rear blade in box; baler in box; spreader in box; JD 6600 combine; JD pull combine w/ auger; JD Patio 140 & 141; JD grader in box; JD scraper in box; Tru-Scale; Oliver equipment baler, combine, Superior drill; New Holland combine & swather; New Idea manure spreader; New Holland self propelled swather &

towns collectibles; airplane pictures; assortment glass; Service Man flag; assortment books; Big Little books; Billy Whiskers books; watch fobs (many early tractor, construction, DeLaval, Jersey Crème, others); farm belt buckles; pens & pencils; sleigh bells; pocket knives; Edison cylinder phonograph; 30 & 40 Dazey churns; lightning rod balls; pig weather vane; bird figures; animal figures; duck decoys; fishing reels; many other collectibles.

NOTE: Frank started collecting in the 1950's. There are many quality collectibles. We will sell toys on Saturday, crocks, collectibles will be on Sunday. This is one of the best collections we have sold in a long time. FOR A MORE COMPLETE LISTING AND PICTURES CHECK OUR WEBSITE AT [www.thummelauction.com](http://www.thummelauction.com)

**FRANK J. HARTLEY ESTATE**

Auction Conducted By: THUMMEL REAL ESTATE & AUCTION LLC, 785-738-0067

**5,565+ AC IRR, DRYLAND & GRASS**  
**w/ROYALTY PROD**  
**LAND AUCTION**  
**GOVE COUNTY, KANSAS**  
**TUES, NOV. 14, 2023 @10:30 AM, CST**

**AUCTION LOCATION:**  
AMERICAN LEGION, GRAINFIELD, KANSAS  
**SELLER: ALBIN FARMS, LLC, ET AL.**

**CROPS:** Subject to the tenant's rights, if any.  
**CLOSING:** On or before December, 20, 2023.  
**POSSESSION:** Date of closing, subject to tenant's rights, if any.

**CORY BUSSE**  
Listing Agent  
785-332-8345

**www.farmandranchrealty.com**

**MINERAL RIGHTS:** All sellers' interest in mineral rights & royalty prod. will transfer to Buyers.  
**IRRIGATION INFORMATION:** All water rights and equipment are included – Call Cory for details!

**ON-LINE & PHONE BIDDING ALSO AVAILABLE.**  
Call F&RR to register prior to sale day!

**FOR AUCTION BILL & DRONE VIDEO VISIT**  
**www.farmandranchrealty.com**

**FARM & RANCH REALTY, INC.**  
PO BOX 947 • COLBY, KS 67701  
800-247-7863  
Donald L. Hazlett, Broker /Auctioneer

"When you list with Farm & Ranch, it's as good as SOLD!"

## LAND AUCTION

123.9 taxable acres +/- located in Marshall County, KS - S18, T02, R07 – Marysville Township  
151.4 taxable acres +/- located in Marshall County, KS - S18, T02, R07 – Marysville Township

**FRIDAY, NOVEMBER 17, 2023 — 2:00 PM**

Auction Location: American Legion, 310 Veterans Memorial Drive, MARYSVILLE, KS 66508

**NORTH TRACT #1 ADDRESS:** Located in the SW corner at the intersection of 8th Rd. & Harvest Rd., Marshall Co, KS. **DIRECTIONS:** From intersection of Hwy 77 & Harvest Rd. drive 1 mile west, located in SW corner, seen on westside of 8th Rd. & seen on southside of Harvest Rd.



**DESCRIPTION:** NE1/4 of S18, T02, R7 less two parcels of land containing 12.86 & 4.2 acres m/l, per CES Group Inc surveys, and less railroad tracks tract and right of ways. Legal description is too lengthy to put onto sale bill.

**MS CO. APPRAISER'S ESTIMATED PROPERTY ACREAGES:**  
123.9 acres +/- farmland, 109.1 acres +/- cropland

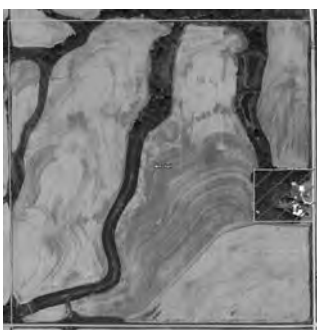
**FSA ESTIMATED PROPERTY ACREAGES:**

Crop Data	Base Acres	PLC Yield	ARC/PLC
Wheat	TBD was 32.8	37	ARC County
Corn	TBD was 17.3	83	ARC County
Grain Sorghum	TBD was 37.6	89	ARC County
Soybeans	TBD was 6.4	35	ARC County

\*To Be Determined (TBD), crop data excludes acres in the triangle north of the railroad tracks

MS County Appraiser's  
Estimated Taxes: \$2,498.34

**SOUTH TRACT #2 ADDRESS:** Located in NW corner at the intersection of 8th Road & Indian Road, Marshall County, KS. **DIRECTIONS:** From intersection of Hwy 77 & Harvest Rd. drive 1 mile west, then turn south onto 8th Rd. for 1/2 to 1 mile, seen on westside of 8th Rd. & on northside of Indian Rd.



**DESCRIPTION:** SE1/4 of S18, T02, R7 less parcel of land containing 5.09 acres more or less. Legal description is too lengthy to put onto sale bill.

**MS COUNTY APPRAISER'S ESTIMATED PROPERTY ACREAGES:**

151.4 acres +/- farmland, 127.2 acres +/- cropland

**FSA ESTIMATED PROPERTY ACREAGES:**

Crop Data	Base Acres	PLC Yield	ARC/PLC
Wheat	46.4	37	ARC County
Corn	15.4	83	ARC County
Grain Sorghum	33.7	89	ARC County
Soybeans	22.0	35	ARC County

MS County Appraiser's  
Estimated Taxes: \$3,261.00

These two tracts provide excellent locations for farming, residing, hunting & investing!  
Look these properties over before the sale!

CONTACT PRELL REALTY & AUCTION, LLC for more details.

**SELLER: FREDERICK H. NIETFIELD TRUST**

**TAXES:** Seller pays 2023 taxes and prior years. Buyers will pay taxes for year 2024 and all subsequent taxes and assessments.

**TERMS & POSSESSION:** Cash with 10% down payment, earnest money to be paid day of auction with balance due on day of closing. **Tract #1** closing date will be on or before December 28, 2023. **Tract #2** closing date will be after January 1st, 2024 but on or before January 12, 2024. Title insurance will be used. Owner's title insurance, contract, deed, and escrow fees will be split 50/50 between buyer and seller. Possession will be given on closing date. Seller might allow buyer to work ground prior to closing.

For a copy of this sale bill visit our website at [prellrealtyauction.com](http://prellrealtyauction.com)

**ALL PERSPECTIVE BIDDERS:** Properties will be sold in present condition, as is where is, without warranties or inspections by seller or broker. Bidders are urged to inspect these properties. Boundary surveys will be at the buyer's expense, if desired. Red lines on maps are approximate representation and not survey lines. Possession of the premises shall be delivered to buyer on final closing, subject to rights of the current tenants. The owner's share of 2023 crops and USDA payments, if any, will remain with the seller. Information is given from sources deemed reliable, but not guaranteed by seller or broker. The contracts were prepared on behalf of the seller, and Galloway, Weigers, & Brinegar are attorneys for the seller. Pony Express Title LLC will be the escrow agent. **Prell Realty & Auction LLC is acting as the Seller's Agent and represents the seller's interest.** Statements made day of the auction take precedence over advertisements or previous statements.

**PRELL REALTY & AUCTION, LLC • [prellrealtyauction.com](http://prellrealtyauction.com)**

Don Prell, Assoc. Broker/Auctioneer 785-562-6787 Steve Prell, Assoc. Broker/Auctioneer 785-713-2191 Vallery Prell, Broker 785-713-1466

**WE SELL LAND**  
Considering Selling Land? Land Prices are at Record Highs!  
Call Today for a FREE Valuation of Your Property!

**322+/- Acres Ottawa County, Kansas Land**  
List Price: \$1,660,000  
Property Location: 2 miles N of Delphos, KS.  
**UNDER CONTRACT**

**152.61+/- Acres Cloud County, Kansas Land**  
List Price: \$785,000  
Property Location: 1.5 miles West of Glasco, KS on Highway 24.  
Legal Description: S18, T09, R04W, W 1/2 NW 1/4, & E 1/2 NW 1/4 & E 1/2 SW 1/4 & W 1/2 SE 1/4 EXC RD ROW, ACRES 322.1  
GREAT property featuring PRIME cropland that's mostly Class I & Class II soils and is 96% in crop production.  
Listing Agent: Jeff Dankenbring, 785.562.8386 or jeff@midwestlandandhome.com

**159+/- Acres Pawnee County, Nebraska Land**  
List Price: \$1,477,000  
Property Location: 3 miles Northeast of Liberty, NE.  
Legal Description: W 1/2 of the NW 1/4 and the W 1/2 of the SW 1/4, 2N-9E-29, Pawnee County, NE A 159-acre tract that lays a full mile north and south. Over 98% of total acres are tillable consisting of perfectly maintained upland and excellent Plum creek bottom. Offering a return on nearly every acre of high producing Nebraska farm ground!  
Listing Agent: Toby M Bruna, 785.713.9325 or toby@midwestlandandhome.com

**156.65+/- Acres Jewell County, Kansas Land**  
List Price: \$567,000  
Property Location: 2 miles South of Burr Oak, KS  
**UNDER CONTRACT**  
Legal Description: S21, T02, R09W, ACRES 156.65, SW1/4 LESS ROW  
This property has White Rock Creek, a year-round freshwater creek. The cropland features predominately Class II & Class III soils with highly productive creek bottom. The 20-acre pasture is the perfect spot for wintering cattle. Also a 40'x50' metal building.  
Listing Agent: Jeff Dankenbring, 785.562.8386 or jeff@midwestlandandhome.com

**855.803.5263**  
**www.MidwestLandandHome.com**

**MIDWEST LAND & HOME**



# Grass & Grain Area Auctions and Sales

Due to the uncertainty of events, if you plan to attend any of the following auctions and have any doubts, please contact the auction company to confirm that the auction will be conducted and inquire about safety procedures if you are concerned. And please check their websites.

Hundreds of auctions, online and in-person. [www.kansasauctions.net/gg/](http://www.kansasauctions.net/gg/)  
**2-Day Online Auction of 500+ Lots (Open Now; Day 1 closed; Day 2 closes Oct. 31, 2 pm) - Selling Day 1:** saddles & Western items, jewelry, antiques & collectibles, furniture, holiday items & more; **Selling Day 2:** crocks, antiques & Western items, furniture, beer items & more (items located Cottonwood Falls) held online: [www.GriffinRealEstateAuction.com](http://www.GriffinRealEstateAuction.com). Auctioneers: Griffin Real Estate & Auction.

**Online Only Land Auction (Bidding OPENS October 20 & ends November 3, 1 PM) - 79.49 Acres m/l of Atchison County Land consisting of T1: Cropland & CRP (less homesite); T2: Homesite & building (4.25 ac. m/l). Selling for William Speer III Trust. [www.MidwestLandandHome.com](http://www.MidwestLandandHome.com). Auctioneers: Midwest Land & Home, Jeff Dankenbring listing broker.**

**Online Only Auction (Open Now, begins closing Nov. 1, 8 PM) - Collectibles, Model RR items, lots of computer & electronic supplies, antiques, primitives, small farm equipment & lots more (items located at Alden) selling for Miles Living Estate. Held at [hollingerauction.hbid.com/auctions](http://hollingerauction.hbid.com/auctions). Auctioneers: Hollinger Online Auction.**

**November 1 - Absolute Land Auction consisting of 7,550 m/l Acres Irrigated & Dryland (Kit Carson County - S. of Burlington) selling in 17 Tracts. All irrigated equipment & water rights are included. Held at Burlington, Colorado. Auctioneers: Farm & Ranch Realty, Inc., Cory Busse, listing agent, Don Hazlett, broker/auctioneer.**

**November 3 - Equipment, vehicles, JD Gator, guns, tools, furniture & antiques & more. Also selling the homestead & 154 acres held at Atlanta. Auctioneers: Sundgren Realty, Inc.**

**November 4 - B&S Live On-Site Consignment auction expecting 800 pieces including Tractors, loaders, combines, corn heads, row crop, platforms, header trailers, 2 farm retirements, planters, drills, seed fenders, augers, conveyors, grain vac, auger & gravity wagons, manure spreaders, applicators, hay equipment balers, square baler, mowers, rakes, tedders, 3 point & misc. equipment, brush cutters, finish mower, field cultivators, tillage, forage & feeding equipment, grinder mixers, mills, construction, skid steers, excavators, dozers, wheel loaders, brush cutters, finish mower, vehicles, grain trucks, trailers, ATVs, lawn mowers, livestock equipment, over 150 skid loader attachments held at Gallatin, Missouri with online bidding available at [equipmentfacts.com](http://equipmentfacts.com). Auctioneers: B&S Equipment Sales.**

**November 4 - Estate auction including 1988 Ford F150 pickup, other vehicles not running, large lot of native walnut lumber, collectibles including crockery, iron wheels, cast iron & more, Mini rod Pulling Tractor, tools, shop items & much more held at Americus. Auctioneers: Hancock Auction & Real Estate.**

**November 4 - 2001 Chevy K2500 Silverado 4dr 1 owner pickup, 2002 Crestliner V-hull fishing boat, trailer & motors (1 owner), Owatonna 330 Mustang skid loader, utility trailers, 2007 Honda 4-wheeler, lawn, garden, log splitter, generator, guns, meat processing, fishing equip., household, tools & misc., held at Odell, Nebraska for Ted & Rachel Bright. Auctioneers: Jurgens, Heinrichs, Hardin, Sommerhalder.**

**November 4 - Tractors & Equipment, mower, lawn equipment, shop equipment & tools, collectibles, household, miscellaneous & more held near Erie for Max & Bonnie Grossnickle Living Estate. Auctioneers: Garretson Auction Service, LLC.**

**November 4 - Coin auction selling Over 300 Lots of coins including 1/2 cents, large cents, FE & IH cents, nickels, dimes, dollars, Morgans, coins in albums & sheets, silver rounds, gold & more held at Portis. Auctioneers: Wolters Auction.**

**November 4 - K-14 Consignment auction selling vehicles, RVs, boats, tractors, farm & livestock equipment, fencing supplies, lawn & garden, shop & hand tools, construction supplies, appliances, household & collectibles & more held at Hutchinson. Auctioneers: Morris Yoder Auctions.**

**November 4 - Vehicles (1994 Ford F-250, 1970 Chevy 3/4T, 1973 GMC C-65, 1994 GMC Astro van), trailers, shop equipment & tools, mowers, lawn & garden, shop supplies, guns & fishing, furniture, appliances, antiques & collectibles, storage container & more held on the North edge of Scott City for Mary Ann Davis & The Late Les Davis. Auctioneers: Berning Auction, Inc.**

**November 4 - Large auction selling tractors, combine, grain trucks, full line of Farm Machinery, tools, vintage furniture, collectibles, 1940 Buick Special, 1975 Olds Cutlass, household & more held near Osage City for Lundgren Farm Trust and Pat & Gail Bean. Auctioneers: Wischropp Auctions.**

**November 4 - Lazy J Appreciation Auction selling Vintage: toys, tobacco tins, signs, crock jugs, Walt Disney movies, coins, advertising items, Salina & Lindsborg collectibles & more, Christmas items, collectibles, sewing & much more held at Gypsum. Auctioneers: Lazy J Auctions.**

**November 4 - Tractors (MF 1035, IH Farmall 560, Ford 2N & 8N, JD B), skid steer attachments, 3 point equipment & more nice equipment, collectibles, firearms, knives & more held at rural Baldwin City for Larry & LaDonna Wilson/Neighbors. Auctioneers: Elston Auctions.**

**November 4 - Irvine Ranch 19th annual Bull & Female sale offering 140 head held at the ranch North of Manhattan at 1 PM.**

**November 4 - Bittersweet West Heart of the Herd Dispersal, 16th Annual Ladies Nite: open heifers, cow-calf pairs, fall yearling bulls, flushes, 2 semen tanks with guest consignors: 4 M Salers, Boeckman Cattle Co., Grandkids Coop, Heart Bar S, K 4 Cattle Co., McIver's Happy Acres, Roy Schmidt Estate held at Hiawatha.**

**November 5 - Toyota forklift, trailer, riding mowers, tools, generator, lawn & garden & more held at Countryside Small Engine Repair, Lawrence. Auctioneers: Edgcomb Auctions.**

**November 6 - Smoky Y Ranch Red Angus production sale selling 50 age advance registered Red Angus bulls & registered bred heifers, registered open show heifer/donor prospects, commercial bred heifers & frozen genetics held at Monument.**

**November 7 & 8 - Grass & Grain Farm & Ranch Show held at the National Guard Armory, 721 Levee Drive, Manhattan featuring the latest in agriculture products, technology & services as well as Chef Alli cooking demo & more.**

**November 8 - Farm equipment auction including Tractors, loaders, combine & sprayer, backhoe, mowers, trucks, trailers, farm equipment, other farm items, pickups, shop tools & more held near Dighton for Elveren Borell Estate. Auctioneers: Berning Auction, Inc.**

**November 9 - Real Estate auction consisting of a 3 bedroom, 2 bath home with two garages on a corner lot. Also selling personal property including 2016 Chevy Equinox LT, yard items, tools, household, holiday decor & more held at Junction City. Auctioneers: Crossroads Real Estate & Auction, LLC.**

**November 9 - Online Land Auction: 77 acres m/l of pasture & heavy timber, great Sandy Creek hunting tract with good pasture (Yates Center) for Stowell Family. [www.VaughnRoth.com](http://www.VaughnRoth.com). Auctioneers: Vaughn-Roth Land Brokers.**

**November 10 - Land Auction selling 154 acres of Marshall County Cropland held at Oketo for Alwin Poppen Family. Auctioneers: Olmsted Real Estate & Auctions.**

**November 10 - Online Land Auction: 205 acres m/l in 2 tracts or combinations. Prime Neosho River cropland & build site (Burlington) selling for Garrett's River Bend. [www.VaughnRoth.com](http://www.VaughnRoth.com). Auctioneers: Vaughn-Roth Land Brokers.**

**November 11 - Boats & equipment, shop tools & supplies, lawn & garden items, farm primitives & collectibles, household items & more held at Cheney for The Cris Bell Estate. Auctioneers: Morris Yoder Auctions.**

**November 11 (12 Noon) - 2018 F350 4WD Dually, cab & chassis truck, 1876 miles, like new held at the Onaga Fire Station for Pottawatomie County Rural Fire District #3. Auctioneers: Cline Realty & Auction, LLC.**

**November 11 - Personal property auction held West of Marysville for Dennis & Ruth Kracht. Auctioneers: Olmsted & Sandstrom.**

**November 11 - Live personal property auction including 2006 Ford F150 XL reg cab, Guns, knives & outdoor items, large tools & equipment, tools, household & more held at McPherson for Estate of David & Sandy Clark. Auctioneers: Griffin Real Estate & Auction.**

**November 11 - Large auction including Tractors, mowers, trailers, lots of Good shop tools, furniture, old car parts, much miscellaneous held at Auburn for Ruth Potter & the Late Dan Potter. Auctioneers: Wischropp Auctions.**

**November 11 - Land Auction consisting of 151 acres m/l of Nemaha County Land with approx. 140.40 acres of tillable land, balance small creek and waterways held at Seneca for Alfred & Darlene Roeder Trust. Auctioneers: Seneca Realty, Mike Kuckelman, broker; Dale Wilhelm, auctioneer.**

**November 11 - Moving auction consisting of Furniture, appliances, antiques, tools, yard equipment, industrial equipment & more held at Salina. Auctioneers: Lazy J Auctions, Loren Meyer.**

**November 11 & 12 - Two-day auction: selling Nov. 11: Toys including cast iron banks, cast iron toys, farm toys (many 50s & 60s), many farm tractors & implements. Selling Nov. 12: Collectibles including Majic Lantern in wood box, crocks, churns, lamps inc. Aladdin, clocks, spool cabinet, drug store scale, humidifier stand, Christmas collection, dolls, books, watch fobs, farm belt buckles, fishing reels & much more held at Belleville for Frank J. Hartley Estate. Auctioneers: Thummel Real Estate & Auction, LLC.**

**November 11 - Farm auction including 1961 Ford 961 Powermaster row crop tractor, 3 pt. Woods rotary mower, bee keeping supplies, generator, 3 Oakes #503 chicken waterers & more held at rural Lawrence for Jeff & Carmen Shultz. Auctioneers: Elston Auction.**

**November 11 - Moser Ranch 32nd Annual Bull Sale offering 60 SimAngus, Angus and Simmental bulls held at the ranch north of Wheaton (bid-off begins at 11 AM).**

**November 12 - Absolute Land auction consisting of 5,565 acres m/l of Gove County land including irrigated, dryland & grass with royalty production held at Grainfield for Albin Farms, LLC, et al. Online & phone bidding available: [www.farmandranchrealty.com](http://www.farmandranchrealty.com). Auctioneers: Farm & Ranch Realty, Inc., Donald L. Hazlett, broker; Cory Busse, listing agent.**

**November 12 - Absolute Real Estate auction consisting of 80 Acres (76.9 taxable) with newer metal Cleary building, working windmill with well & a hunting paradise held at Lindsborg for Marcel & Barbara Tajchman Estate. Auctioneers: Wilson Realty & Auction Service.**

**November 13 - Online Land Auction: 99 acres m/l of premium Neosho River cropland & timber, tremendous waterfowl & whitetail tract (Neosho Falls). [www.VaughnRoth.com](http://www.VaughnRoth.com). Auctioneers: Vaughn-Roth Land Brokers.**

**November 14 - Live Land Auction selling 1,720 acres m/l of pasture, tillable, hunting & residence in 8 tracts or combinations (Gridley) held at Madison for the Sauder Estate. Auctioneers: Vaughn-Roth Land Brokers.**

**November 15 - Land Auction consisting of 155.9 acres m/l of Rice County Land sold in 1 Tract held Live at Lyons with Online bidding available at [RanchandFarmAuctions.com](http://RanchandFarmAuctions.com). Auctioneers: Ranch & Farm Auctions in cooperation with Whitetail Properties Real Estate, LLC.**

**November 15 - Live Land Auction selling 420 acres m/l of high quality grass, excellent cropland & hunting held at Council Grove for KLM Investments (family of Mack & Sara Colt). Auctioneers: Vaughn-Roth Land Brokers.**

**November 16 - Butler County Land Auction consisting of 240 acres m/l Native Flint Hills pasture (land located between Cassoday & Burns), pond, 60 ac. m/l of the property is broome grass & fenced separate from the balance held live at El Dorado with Online bidding available. Auctioneers: Sundgren Realty, Inc., Land Brokers.**

**November 16 - Online Land Auction: 141 acres m/l of prime river bottom & 2nd bottom tillable in 2 tracts (Burlington) selling for Buckles Family. [www.VaughnRoth.com](http://www.VaughnRoth.com). Auctioneers: Vaughn-Roth Land Brokers.**

**November 16 - Online Land: Auction 115 acres m/l of upland tillable with utilities nearby, excellent location (Iola) selling for Sara Colt Trust. [www.VaughnRoth.com](http://www.VaughnRoth.com). Auctioneers: Vaughn-Roth Land Brokers.**

**November 17 (Friday) - Land Auction consisting of 822 acres m/l of Greenwood County Land sold in 5 Tracts (land located between Severy and Piedmont) T1: 160.6 ac. m/l tillable farm ground, 2 ponds, pasture; T2: 145.9 ac. m/l of ag/recreation property, 2 ponds, potential tillable; T3: 73.7 ac. m/l featuring nice, deep 2-acre pond, balance native pasture; T4: 233.7 ac. m/l native pasture with 8.5-acre lake, 6 ponds & more; T5: 198.9 ac. m/l with 2 1/2-acre pond, pasture, farm house held live at Eureka with online bidding available ([www.Sundgren.com](http://www.Sundgren.com)). Auctioneers: Sundgren Realty Land Brokers.**

**November 17 (Friday) - Land Auction consisting of 388 acres m/l sold in 3 Tracts of Marshall County Cropland held at Herkimer for Lawrence A. "Tony" Stoeher Trust. Auctioneers: Olmsted Real Estate & Auctions.**

**November 17 (Friday) - Land Auction consisting of 1239, taxable acres m/l in Marshall County & 151.4 taxable acres m/l in Marshall County held at Marysville selling for Frederick H. Niefeld Trust. Auctioneers: Prell Realty & Auction, LLC.**

**November 18 - Antiques, collectibles & household including antique furniture, clocks, quilts, pictures, Indian baskets, lamps, Dazey churn, large pig collection, glassware & china, local advertising items, candy containers, flatware, books, Toys including John Deere, IHC & Oliver & other vintage toys, dolls, modern furniture & more held on the South edge of Clifton for Arland & Shirley Benteman. Auctioneers: Thummel Real Estate & Auction, LLC.**

**November 18 - Southern Nemaha County pasture & cropland auction (land located South of Centralia), selling 235 acres m/l with 51.07 acres terraced upland cropland & 184.44 acres native grass pasture held at Centralia for Jimmie & Karen VanGilder. Auctioneers: Cline Realty & Auction, LLC.**

**November 19 - Over 100 cast iron tractor seats, tin seats, tool holders & planter lids, paper items, John Deere items (collector plates, tractor trading cards, wrenches & more), Toys inc.: die cast, hard rubber & plastic tractors, trucks, combine, implement & more, vintage signs & advertising, 75 cast iron doorstops & more held at Belleville for Chester & Mildred Russell Family. Auctioneers: Thummel Real Estate & Auction, LLC.**

**November 20 - Online Land Auction: 471 acres m/l of river bottom tillable, upland tillable & pasture in 3 tracts or combinations (Burlington) selling for Holloway/Noel Families. [www.VaughnRoth.com](http://www.VaughnRoth.com). Auctioneers: Vaughn-Roth Land Brokers.**

**November 24 (Friday) - Land Auction consisting of 80 acres m/l of choice Jackson County hunting & wildlife habitat land (land located West of Mayetta), auction held at Mayetta for Brandy & Jennifer Johnston. Auctioneers: Cline Realty & Auction, LLC.**

**November 25 - Real Estate Auction consisting of 311 ac. m/l, of Southern Nemaha Co. Grassland & Farmland, including 2 wind turbines. T1: 77 ac. m/l of terraced, seeded back grassland; T2: 158 ac. m/l of terraced, seeded back grass; T3: Combo of Tracts 1 & 2; T4: 76 ac. m/l, 9 ac. tilled bottom land, balance mostly terraced, seeded back grassland held at Centralia for Fredrick L. & Georgia A. Mitchell Rev. Trust. Auctioneers: Cline Realty & Auction, LLC.**

**November 25 - Estate Auction including 2014 Dodge Ram 1500, 4WD, 4dr, 1 owner truck, 111k, nice; Large John Deere Toy/Memorabilia Collection (99% w/boxes), Coin & Stamp Collection & more held at Lawrence for Wendy Balfour. Auctioneers: Elston Auctions.**

**November 28 - Land Auction consisting of 240 acres m/l of Cloud County land including T1: 158.79 ac. with 155.75 cropland & T2: 78.25 ac. cropland held live at Clyde with online bidding starting Nov. 14 ([www.MidwestLandandHome.com](http://www.MidwestLandandHome.com)) selling for Virginia Ransopher Trust. Auctioneers: Midwest Land & Home.**

**November 28 - Lincoln County Land Auction offered in 3 tracts. Excellent tillable and timber held at Lincoln for Steven E. Steinhaus & Mark A. Steinhaus. Auctioneers: Horizon Farm & Ranch Realty, LLC., Clint Heller, agent.**

**November 28 - Meinhardt Farm Equipment Auction including over 1,000 lots of horse drawn, antique & vintage tractors & farm equipment held at Wamego. Auctioneers: Big Iron Auctions, Bob Eichenberger, sales rep.**

**November 30 - Land Auction consisting of T1: 36 acres m/l tillable, potential development/build site (west of Hesston); T2: 15 acres m/l venue site with rustic cabin, ponds, timber in Harvey County held at Hesston selling for Hesston College. Online bidding available: [www.horizonfarmranch.com](http://www.horizonfarmranch.com). Auctioneers: Horizon Farm & Ranch Realty, LLC., Micheala Fry, sales agent.**

**December 2 - St. James Catholic Church Consignment auction accepting consignments for farm equipment, construction equipment, vehicles, hay, farm supplies, hedge posts, livestock equip., etc. held at Wetmore. Proceeds support St. James Church. To consign contact Bill Burdick or Ron Burdick.**

**December 9 - Wheeler Angus annual production sale selling 40+ breeding age bulls. Heavily influenced with Baldrige Genetics. Spring Bred cows, fall open heifers, fall pairs, embryos & more held at Wheeler Angus Sale Barn Paris, Missouri.**

**March 16, 2024 - Springhill Herefords - On Target Bull sale: Our 2024 offering will include bulls sired by Houston, Wall Street, Defiance, Long Haul, Perfecto, Leader 182F and KCF Trust B279. Visit our website for more details about the sale, private treaty offerings.**

**November 9 - Online Land Auction: 77 acres m/l of pasture & heavy timber, great Sandy Creek hunting tract with good pasture (Yates Center) for Stowell Family. [www.VaughnRoth.com](http://www.VaughnRoth.com). Auctioneers: Vaughn-Roth Land Brokers.**

**November 10 - Land Auction selling 154 acres of Marshall County Cropland held at Oketo for Alwin Poppen Family. Auctioneers: Olmsted Real Estate & Auctions.**

**November 10 - Online Land Auction: 205 acres m/l in 2 tracts or combinations. Prime Neosho River cropland & build site (Burlington) selling for Garrett's River Bend. [www.VaughnRoth.com](http://www.VaughnRoth.com). Auctioneers: Vaughn-Roth Land Brokers.**

**November 11 - Boats & equipment, shop tools & supplies, lawn & garden items, farm primitives & collectibles, household items & more held at Cheney for The Cris Bell Estate. Auctioneers: Morris Yoder Auctions.**

**November 11 (12 Noon) - 2018 F350 4WD Dually, cab & chassis truck, 1876 miles, like new held at the Onaga Fire Station for Pottawatomie County Rural Fire District #3. Auctioneers: Cline Realty & Auction, LLC.**

**November 11 - Personal property auction held West of Marysville for Dennis & Ruth Kracht. Auctioneers: Olmsted & Sandstrom.**

**November 11 - Live personal property auction including 2006 Ford F150 XL reg cab, Guns, knives & outdoor items, large tools & equipment, tools, household & more held at McPherson for Estate of David & Sandy Clark. Auctioneers: Griffin Real Estate & Auction.**

**November 11 - Large auction including Tractors, mowers, trailers, lots of Good shop tools, furniture, old car parts, much miscellaneous held at Auburn for Ruth Potter & the Late Dan Potter. Auctioneers: Wischropp Auctions.**

**November 11 - Land Auction consisting of 151 acres m/l of Nemaha County Land with approx. 140.40 acres of tillable land, balance small creek and waterways held at Seneca for Alfred & Darlene Roeder Trust. Auctioneers: Seneca Realty, Mike Kuckelman, broker; Dale Wilhelm, auctioneer.**

**November 11 - Moving auction consisting of Furniture, appliances, antiques, tools, yard equipment, industrial equipment & more held at Salina. Auctioneers: Lazy J Auctions, Loren Meyer.**

**November 11 & 12 - Two-day auction: selling Nov. 11: Toys including cast iron banks, cast iron toys, farm toys (many 50s & 60s), many farm tractors & implements. Selling Nov. 12: Collectibles including Majic Lantern in wood box, crocks, churns, lamps inc. Aladdin, clocks, spool cabinet, drug store scale, humidifier stand, Christmas collection, dolls, books, watch fobs, farm belt buckles, fishing reels & much more held at Belleville for Frank J. Hartley Estate. Auctioneers: Thummel Real Estate & Auction, LLC.**

**November 11 - Farm auction including 1961 Ford 961 Powermaster row crop tractor, 3 pt. Woods rotary mower, bee keeping supplies, generator, 3 Oakes #503 chicken waterers & more held at rural Lawrence for Jeff & Carmen Shultz. Auctioneers: Elston Auction.**

**November 11 - Moser Ranch 32nd Annual Bull Sale offering 60 SimAngus, Angus and Simmental bulls held at the ranch north of Wheaton (bid-off begins at 11 AM).**

**November 12 - Absolute Land auction consisting of 5,565 acres m/l of Gove County land including irrigated, dryland & grass with royalty production held at Grainfield for Albin Farms, LLC, et al. Online & phone bidding available: [www.farmandranchrealty.com](http://www.farmandranchrealty.com). Auctioneers: Farm & Ranch Realty, Inc., Donald L. Hazlett, broker; Cory Busse, listing agent.**

**November 12 - Absolute Real Estate auction consisting of 80 Acres (76.9 taxable) with newer metal Cleary building, working windmill with well & a hunting paradise held at Lindsborg for Marcel & Barbara Tajchman Estate. Auctioneers: Wilson Realty & Auction Service.**

**November 13 - Online Land Auction: 99 acres m/l of premium Neosho River cropland & timber, tremendous waterfowl & whitetail tract (Neosho Falls). [www.VaughnRoth.com](http://www.VaughnRoth.com). Auctioneers: Vaughn-Roth Land Brokers.**

**November 14 - Live Land Auction selling 1,720 acres m/l of pasture, tillable, hunting & residence in 8 tracts or combinations (Gridley) held at Madison for the Sauder Estate. Auctioneers: Vaughn-Roth Land Brokers.**

**November 15 - Land Auction consisting of 155.9 acres m/l of Rice County Land sold in 1 Tract held Live at Lyons with Online bidding available at [RanchandFarmAuctions.com](http://RanchandFarmAuctions.com). Auctioneers: Ranch & Farm Auctions in cooperation with Whitetail Properties Real Estate, LLC.**

**November 15 - Live Land Auction selling 420 acres m/l of high quality grass, excellent cropland & hunting held at Council Grove for KLM Investments (family of Mack & Sara Colt). Auctioneers: Vaughn-Roth Land Brokers.**

**November 16 - Butler County Land Auction consisting of 240 acres m/l Native Flint Hills pasture (land located between Cassoday & Burns), pond, 60 ac. m/l of the property is broome grass & fenced separate from the balance held live at El Dorado with Online bidding available. Auctioneers: Sundgren Realty, Inc., Land Brokers.**

**November 16 - Online Land Auction: 141 acres m/l of prime river bottom & 2nd bottom tillable in 2 tracts (Burlington) selling for Buckles Family. [www.VaughnRoth.com](http://www.VaughnRoth.com). Auctioneers: Vaughn-Roth Land Brokers.**

**November 16 - Online Land: Auction 115 acres m/l of upland tillable with utilities nearby, excellent location (Iola) selling for Sara Colt Trust. [www.VaughnRoth.com](http://www.VaughnRoth.com). Auctioneers: Vaughn-Roth Land Brokers.**

**November 17 (Friday) - Land Auction consisting of 822 acres m/l of Greenwood County Land sold in 5 Tracts (land located between Severy and Piedmont) T1: 160.6 ac. m/l tillable farm ground, 2 ponds, pasture; T2: 145.9 ac. m/l of ag/recreation property, 2 ponds, potential tillable; T3: 73.7 ac. m/l featuring nice, deep 2-acre pond, balance native pasture; T4: 233.7 ac. m/l native pasture with 8.5-acre lake, 6 ponds & more; T5: 198.9 ac. m/l with 2 1/2-acre pond, pasture, farm house held live at Eureka with online bidding available ([www.Sundgren.com](http://www.Sundgren.com)). Auctioneers: Sundgren Realty Land Brokers.**

**November 17 (Friday) - Land Auction consisting of 388 acres m/l sold in 3 Tracts of Marshall County Cropland held at Herkimer for Lawrence A. "Tony" Stoeher Trust. Auctioneers: Olmsted Real Estate & Auctions.**

**November 18 - Antiques, collectibles & household including antique furniture, clocks, quilts, pictures, Indian baskets, lamps, Dazey churn, large pig collection, glassware & china, local advertising items, candy containers, flatware, books, Toys including John Deere, IHC & Oliver & other vintage toys, dolls, modern furniture & more held on the South edge of Clifton for Arland & Shirley Benteman. Auctioneers: Thummel Real Estate & Auction, LLC.**

**November 18 - Southern Nemaha County pasture & cropland auction (land located South of Centralia), selling 235 acres m/l with 51.07 acres terraced upland cropland & 184.44 acres native grass pasture held at Centralia for Jimmie & Karen VanGilder. Auctioneers: Cline Realty & Auction, LLC.**

**November 19 - Over 100 cast iron tractor seats, tin seats, tool holders & planter lids, paper items, John Deere items (collector plates, tractor trading cards, wrenches & more), Toys inc.: die cast, hard rubber & plastic tractors, trucks, combine, implement & more, vintage signs & advertising, 75 cast iron doorstops & more held at Belleville for Chester & Mildred Russell Family. Auctioneers: Thummel Real Estate & Auction, LLC.**

**November 20 - Online Land Auction: 471 acres m/l of river bottom tillable, upland tillable & pasture in 3 tracts or combinations (Burlington) selling for Holloway/Noel Families. [www.VaughnRoth.com](http://www.VaughnRoth.com). Auctioneers: Vaughn-Roth Land Brokers.**

**November 24 (Friday) - Land Auction consisting of 80 acres m/l of choice Jackson County hunting & wildlife habitat land (land located West of Mayetta), auction held at Mayetta for Brandy & Jennifer Johnston. Auctioneers: Cline Realty & Auction, LLC.**

**November 25 - Real Estate Auction consisting of 311 ac. m/l, of Southern Nemaha Co. Grassland & Farmland, including 2 wind turbines. T1: 77 ac. m/l of terraced, seeded back grassland; T2: 158 ac. m/l of terraced, seeded back grass; T3: Combo of Tracts 1 & 2; T4: 76 ac. m/l, 9 ac. tilled bottom land, balance mostly terraced, seeded back grassland held at Centralia for Fredrick L. & Georgia A. Mitchell Rev. Trust. Auctioneers: Cline Realty & Auction, LLC.**

**November 25 - Estate Auction including 2014 Dodge Ram 1500, 4WD, 4dr, 1 owner truck, 111k, nice; Large John Deere Toy/Memorabilia Collection (99% w/boxes), Coin & Stamp Collection & more held at Lawrence for Wendy Balfour. Auctioneers: Elston Auctions.**

**November 28 - Lincoln County Land Auction offered in 3 tracts. Excellent tillable and timber held at Lincoln for Steven E. Steinhaus & Mark A. Steinhaus. Auctioneers: Horizon Farm & Ranch Realty, LLC., Clint Heller, agent.**

**November 28 - Meinhardt Farm Equipment Auction including over 1,000 lots of horse drawn, antique & vintage tractors & farm equipment held at Wamego. Auctioneers: Big Iron Auctions, Bob Eichenberger, sales rep.**

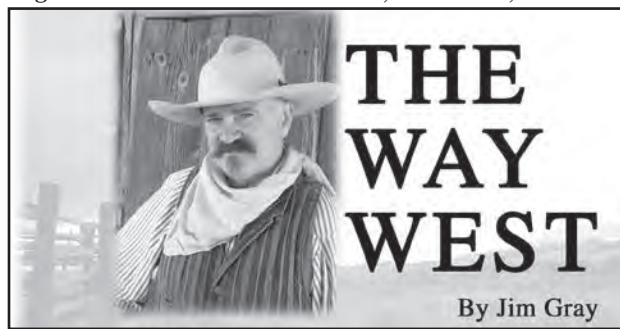
**November 30 - Land Auction consisting of T1: 36 acres m/l tillable, potential development/build site (west of Hesston); T2: 15 acres m/l venue site with rustic cabin, ponds, timber in Harvey County held at Hesston selling for Hesston College. Online bidding available: [www.horizonfarmranch.com](http://www.horizonfarmranch.com). Auctioneers: Horizon Farm & Ranch Realty, LLC., Micheala Fry, sales agent.**

**December 2 - St. James Catholic Church Consignment auction accepting consignments for farm equipment, construction equipment, vehicles, hay, farm supplies, hedge posts, livestock equip., etc. held at Wetmore. Proceeds support St. James Church. To consign contact Bill Burdick or Ron Burdick.**

**December 9 - Wheeler Angus annual production sale selling 40+ breeding age bulls. Heavily influenced with Baldrige Genetics. Spring Bred cows, fall open heifers, fall pairs, embryos & more held at Wheeler Angus Sale Barn Paris, Missouri.**

**March 16, 2024 - Springhill Herefords - On Target Bull sale: Our 2024 offering will include bulls s**





# THE WAY WEST

By Jim Gray

## Trailing To New Markets

“Dodge City is bracing herself up for the cattle trade. Places of refreshment are being gorgeously arrayed in new coats of paint and other ornaments

to beguile the festive Cowboy.” So boasted the editor in the April 28, 1877, *Dodge City Times*, hoping to showcase his town as the newest market for Texas cattle.

Preparations were none too soon as the first herd of twelve hundred head of cattle owned by Powers, Buckley & Company arrived early in May. Mike Dalton was trail boss. Unfortunately for Dodge, the trail herd only stopped long enough to rest and re-supply as Dalton was driving to Ellis, Kansas, under orders from the owners.

D. W. Powers built his reputation freighting ox teams through to Colorado and the southwest in the late 1860s. He opened a bank at Ellsworth, Kansas in 1873, specifically to finance the cattle trade. Powers was a great supporter of the Kansas Pacific Railway and was offering drovers secured financial backing on the reputation of the Powers name.

The editor of the *Times* continued his effort to sabotage the Ellis cattle trade by exaggerating the impact of the ill feelings of farmers toward cattlemen and the state quarantine law put into place in late 1876. Ellis was curiously placed five miles inside the quarantine boundary

against the “through” cattle from Texas. The *Times* editor added that he “seriously doubted” Dalton’s ability to get the herd through to Ellis. Even if his statements were false, the *Times* was being circulated down the cattle trail to drovers on their way north and every effort was made to sway cattlemen to do business in Dodge City. In spite of the bad publicity, drovers continued to arrive on the range southwest of Ellis. Undeterred, Dodge City continued to send representatives down the trail in an effort to entice Texas herds to market their cattle before reaching far northern destinations. Although bound for Ogallala, Nebraska, “Big Jim” Ellison did check on his herds at Dodge City, giving the *Times* the opportunity to report his appearance in their June 9, 1877 issue. “Mr. James F. Ellison, the King among Texas cattle men, arrived in the city this week.” Bill Butler and Dillard Fant, who were mentioned as having herds on the trail to Dodge also favored Ogallala and were heavy traders of cattle in that town.

The editor of the *Times* continued his assault on Ellis in the June 2, 1877 edition saying that the Powers, Buckley & Company trail herd piloted by Mike Dalton was able to

reach Ellis after a drive hampered by severe conditions and that upon arrival Dalton was captured by “Ellis County grangers.” The editor continued to say that the herd had ended up on “poor range and thirsty while on their way from Dodge.” A stampede had scattered the cattle, allowing local Russian immigrants to corral them and hold them for ransom.

When Dalton reached the Ellis area, he was shown a copy of the *Times* article which prompted him to write a letter to the *Hays City Sentinel* in which he stated “(I) have seen a piece in the Dodge City *Times* headed ‘Come to Grief,’ etc. There is not one word of truth in the whole article.” He had hoped to keep his name out of the papers, but couldn’t stomach the lies published by the *Times*. He also told of the trouble he had near Dodge City. “A man living near Dodge City entered a complaint against me, and had me arrested for driving on to his farm. I paid a small fine and costs and drove on my way rejoicing.” Dalton went on to assure others that there was “Plenty of water and feed west of Ness County,” and “if any one wants to find a newspaper that can tell a column and one half of falsehoods and not one

word of truth, send them to me and I will send them a copy of the Dodge City *Times*, and refer them to that article in which my name appears.”

The June 29th *Hays City Sentinel* reinforced the idea that cattlemen preferred Ellis, writing, “Cattle on a thousand hills there are not, but if you wish to see thousands of cattle on a hill go to Ellis.”

Three weeks later the *Sentinel* reported that the cattle herds filled the entire Smoky Hill River valley west of the north-bound cattle trail. Even so, Dodge City’s efforts were rewarded in forging a new cattle destination with nearly twenty-three thousand head shipped by rail in 1877. Over a quarter of the cattle shipped on Santa Fe rail cars would not guarantee a cattle industry, but a little politicking certainly didn’t spoil the effort, even if the truth was sometimes lost in the rhetoric. Dodge City was well on its way to becoming the great longhorn cattle center that it had set out to become as Texas cattlemen continued trailing to new markets on The Way West.

“The Cowboy,” Jim Gray can be reached at 220 21st RD Geneseo, KS. Phone 785-531-2058 or [kansascowboy@kans.com](mailto:kansascowboy@kans.com).

Don't Miss!

## FREE ICE CREAM

at the 3rd annual Grass & Grain Farm and Ranch Show!

---

Daily - 1:00 p.m.

November 7 - 8, 2023

NOVEMBER  
7<sup>th</sup> & 8<sup>th</sup>

Opens 9 a.m. each day

Located in Manhattan, KS  
at the National Guard Armory

FREE Parking  
FREE Admission

Find us on Facebook: GGFarmShow

785-539-7558

## Farmers & Ranchers

### AUCTIONS EVERY MONDAY & THURSDAY

Selling Cattle every Monday

Hog Sales on 2nd & 4th Monday of the month only!

TOTAL FOR THE WEEK: CATTLE - 3537. HOGS 65.

<b>BULLS: \$122.00-\$134.00</b>	21 Blk Hope 841@238.00		
<b>COWS: \$110.00-\$122.50</b>	10 Blk Lincoln 723@235.00		
<b>STEERS</b>	4 Blk Longford 689@233.50		
300-400 \$315.00 - \$328.00	3 Mix Minneapolis 765@233.00		
400-500 \$290.00 - \$302.50	15 Mix St John 836@233.00		
500-600 \$265.00 - \$279.00	7 Mix Courtland 977@232.00		
600-700 \$255.00 - \$264.00	7 Blk Brookville 881@231.00		
700-800 \$230.00 - \$240.00	7 Mix Solomon 874@230.00		
800-900 \$225.00 - \$239.00	3 Mix Courtland 997@230.00		
900-1,000 \$220.00 - \$232.00	61 Mix Benton 933@229.50		
<b>HEIFERS</b>	<b>HEIFERS</b>		
300-400 \$260.00 - \$271.00	4 Blk Brookville 365@271.00		
400-500 \$257.00 - \$268.00	6 Blk Minneapolis 382@270.00		
500-600 \$245.00 - \$255.00	9 Blk Inman 411@268.00		
600-700 \$232.00 - \$244.00	1 Bwf Ellinwood 415@265.00		
700-800 \$220.00 - \$235.00	7 Blk Minneapolis 457@260.00		
800-900 \$212.00 - \$224.50	11 Blk Galva 494@259.00		
900-1,000 \$200.00 - \$210.00	4 Red Hillsboro 424@257.00		
<b>THURSDAY, OCTOBER 26, 2023</b>	3 Char Hillsboro 483@255.00		
<b>STEERS</b>	8 Char Hillsboro 517@255.00		
4 Blk Minneapolis 353@328.00	10 Blk Ellsworth 599@251.00		
5 Blk Inman 386@315.00	14 Blk Galva 577@250.00		
19 Mix Randolph 457@302.50	3 Blk Longford 548@248.00		
10 Blk Galva 485@295.00	4 Blk Longford 574@246.00		
3 Blk Lincoln 443@288.00	16 Blk Brookville 542@244.50		
2 Blk Brookville 433@284.00	7 Red Hillsboro 604@244.00		
2 Blk Hillsboro 463@283.00	9 Blk Tescott 632@244.00		
9 Mix Minneapolis 436@282.00	23 Blk Falun 583@243.50		
5 Mix Brookville 416@282.00	3 Mix Buhler 523@243.00		
3 Char Hillsboro 425@280.00	4 Mix Hutchinson 601@243.00		
11 Blk Minneapolis 551@279.00	13 Blk Lincoln 612@241.00		
4 Char Hillsboro 495@275.00	2 Blk Hutchinson 605@239.00		
2 Red Hillsboro 468@275.00	14 Blk Galva 638@239.00		
3 Mix St John 487@275.00	11 Mix Tescott 681@235.50		
33 Blk Lincoln 595@274.50	16 Blk Brookville 639@235.50		
5 Blk Hillsboro 538@274.00	22 Mix Falun 697@235.00		
5 Blk Longford 525@274.00	4 Blk Galva 615@235.00		
2 Blk Minneapolis 550@274.00	23 Mix Ellsworth 701@235.00		
17 Mix Brookville 598@270.00	6 Blk Bennington 740@233.00		
11 Mix Brookville 537@267.00	8 Mix St John 836@224.50		
4 Mix Hutchinson 534@264.50	7 Blk Brookville 709@222.00		
14 Blk Galva 602@264.00	4 Blk Brookville 674@220.00		
10 Blk Lorraine 620@254.00	5 Red Tescott 812@219.50		
3 Blk Ellinwood 630@249.00	7 Red Tescott 911@210.00		
16 Mix Brookville 640@249.00			
17 Mix Brookville 660@246.00			
19 Red Hillsboro 651@245.00			
16 Blk Galva 663@245.00			
4 Mix Galva 600@244.00			
10 Blk Longford 664@244.00			
18 Mix St John 654@244.00			
15 Mix Falun 679@243.00			
8 Mix Hillsboro 653@243.00			
7 Red Gypsum 653@243.00			
43 Blk Lincoln 689@241.00			
76 Blk Florence 757@240.00			
8 Blk Florence 700@240.00			
66 Mix Florence 826@239.00			
56 Mix Florence 801@238.75			
26 Mix St John 713@238.50			
2 Mix Galva 893@238.00			

TUESDAY, OCTOBER 24, 2023

SPECIAL COW SALE

BREDS

13 Red Lincolnville Young@2,675.00	5 Blk Lost Springs Young@2,600.00
5 Blk Lost Springs Young@2,550.00	32 Blk Wilsey Young@2,550.00
5 Blk Lost Springs Young@2,550.00	38 Blk Olpe Young@2,525.00
5 Red Olpe Young@2,525.00	5 Red Olpe Young@2,500.00
6 Bwf Olpe Young@2,500.00	12 Red Lincolnville Young@2,500.00
16 Blk Gypsum Young@2,450.00	16 Blk Hedville Young@2,450.00
5 Blk Hedville Young@2,450.00	22 Blk Wilsey Young@2,375.00
32 Blk Hedville Young@2,350.00	12 Blk Courtland Young@2,350.00
57 Red North Dakota Young@2,350.00	

## Livestock Commission Co., Inc.

### Salina, KANSAS

SALE BARN PHONE: 785-825-0211

MONDAY — CATTLE • HOG SALE 2nd & 4th MONDAY

Hogs sell at 11:00 a.m. on the 2nd & 4th Monday of the month. Cattle at 12:00 Noon. Selling calves and yearlings first, followed by Packer cows and bulls.

THURSDAY — CATTLE ONLY

Selling starts at 10:00 a.m. Consign your cattle as early as possible so we can get them highly advertised.

AUCTIONEERS: KYLE ELWOOD, BRANDON HAMEL & GARREN WALROD

For a complete list of cattle for all sales check out our website [www.fandrive.com](http://www.fandrive.com)

CATTLE USA.com LIVE CATTLE AUCTIONS

FARMERS & RANCHERS HAS SWITCHED BACK TO Cattle USA.com for our online auctions.

16 Blk Salina Young@2,325.00	14 Blk Gypsum Young@3,100.00
24 Blk Courtland Young@2,325.00	12 Blk Courtland Young@2,950.00
9 Blk Olpe Solid@2,225.00	8 Blk Ellinwood Hfres@2,800.00
7 Bwf Florence Hfres@2,150.00	3 Bwf Ellinwood Hfres@2,750.00
24 Red North Dakota Young@2,150.00	4 Blk Wilsey Young@2,700.00
49 Blk Courtland Hfres@2,100.00	4 Red Pretty Prairie Young@2,650.00
18 Mix Lost Springs Solid@2,100.00	3 Blk Hedville Young@2,600.00
5 Blk Florence Hfres@2,050.00	4 Blk Brookville Young@2,550.00
11 Red Florence Hfres@2,025.00	18 Blk Lincoln Young@2,550.00
	2 Red Brookville Young@2,450.00

PAIRS

11 Blk Herington Hfres@3,100.00

### Early Consignments For THURSDAY, NOV. 2, 2023

80 steers & heifers, 450-600, May weaned; 70 black steers & heifers, 500-600, spring vaccinated; 60 red angus steers & heifers, 800-850, home raised, long time weaned; 110 black steers, 550-700, home raised; 25 mostly black steers & heifers, 500-700, wean October 1, spring vaccinations, open; 14 Gelbvieh/Angus X steers & heifers, 650-750, home raised, off cow, 1 round vaccinations Rippe sired; 39 black/ bwf steers & heifers, 400-600, home raised, no implants; 20 steers & heifers, 600-700, 2 round vaccinations; 4 black steers, 900, long time weaned, vaccinated; 17 black heifers, 650-750, long time weaned, open, off grass; 60 black/bwf steers & heifers, 500-650; **PLUS MORE BY SALE TIME.**

### SPECIAL CALF SALE!!!

TUESDAY, NOVEMBER 7, 2023 (11 AM Start)

Get Your Cattle CONsigned!!

20 s&h 300-600, spring vaccs; 20 red Angus/charX s&h 500-600, spring & fall vaccs; 50 blk/red s&h, 600#; 35 black/char s&h, 550, fall vaccs, off cow, open; 80 black s&h, 500-600, fall vaccs; 6 black s&h, 500-600, vacc, weaned 30 days; 140 black s&h, 500-700, fall vaccs; 45 black s&h, 500-700, fall vaccs; 70 black s&h 500-600, fall vaccs; 200 Angus/char s&h, 500-650, fall vaccs; 65 black s&h, 500-600, fall vaccs; 90 black str, 500-600, 60+ days wean, fall vaccs; 70 mostly black s&h, 550-650, off cow, 2 round vaccs, open; 100 red/charX s&h, 550-650, fall vaccs, open; 300 s&h, 500-600, 3 round vaccs, wean 45 days; 140 charX s&h, 650-700, 1 round vaccs, knife cut; 135 mostly red s&h, 450-600, vaccs; 50 s&h, 2 round vaccs; 30 black s&h, 550-700, home raised, 2 round vaccs, weaned 60 + days; 20 charX s&h, 500-600, home raised, off cow, 2 round vaccs, open; 60 black/bwf s&h, 450-500, fall vaccs; 40 mostly red/blk s&h, 450-600, spring vaccs; 34 blk s&h, 550-650, wean 60 days, 3 round vaccs; **PLUS MORE BY SALE TIME.**

### SPECIAL CALF SALE!!!

TUESDAY, NOVEMBER 14, 2023 (11 AM Start)

Get Your Cattle CONsigned!!

140 black s&h, 500-700, fall vaccs; 45 black s&h, 500-700, fall vaccs; 75 red Angus s&h, 500-700, fall vaccs, red Angus sired, 75 black s&h 550-625; **PLUS MORE BY SALE TIME.**

\*\*\*UPCOMING SPECIAL SALES\*\*\*

SPECIAL COW SALES: Tuesday, November 21 \* Tuesday, December 19

CALF SALES: Tuesday, November 7 \* Tuesday, November 14

WEANED/VACC SALES: Tuesday, December 5 \* Tuesday, January 2

\* Tuesday, January 9 \* Tuesday, February 6

IN STOCK TODAY:

• Heavy Duty Round Bale Feeders • Heavy Duty Feed Bunks

For Information or estimates, contact:

Mike Samples, Sale Mgr., Cell Phone 785-826-7884

Kyle Elwood, Asst. Sale Mgr., Cell Phone 785-493-2901

Check our listings each week on our website at [www.fandrive.com](http://www.fandrive.com)

Jim Crowther 785-254-7385 Roxbury, KS	Lisa Long 620-553-2351 Ellsworth, KS	Cody Schafer 620-381-1050 Durham, KS	Kenny Briscoe 785-658-7386 Lincoln, KS	Kevin Henke H: 785-729-3473, C: 785-565-3525 Agenda, KS	Austin Rathbun 785-531-0042 Ellsworth, KS
---	--	--	--	---	---

Cattle Sale Broadcast Live on [www.cattleusa.com](http://www.cattleusa.com) 1150 KSAL, Salina 6:45 AM - MON-FRI \* 880 KRVN 8:40 AM - WED-THURS. \*550AM KFMR - 8:00 am, Wed.-Thurs.