

Frontier Extension District hosting Estate Planning Series

The Frontier Extension District is hosting a series of meetings this fall to help families start the estate planning process. Creating an estate plan gives you control of your legacy and is the key to ensuring your heirs inherit the assets you want them to receive. The three meetings are scheduled for November 7, November 30, and December 5, from 7:00-9:00 p.m. in the Commission Chambers of the Franklin County Annex, 1418 S. Main Street, Ottawa. If you are interested in attending, please register by calling your local Frontier Extension District Office-Garnett at 785-448-6826; Ottawa at 785-229-3520 and Lyndon at 785-828-4438 or by visiting the Frontier District website at frontierdistrict.k-state.edu.

The first meeting of the series (Nov. 7th) will highlight the importance of communication and will include sessions on generational differences and family communication. Rebecca McFarland, Frontier Extension District director, will start the series by discussing the characteristics of each generation and how generational differences brings diverse perspectives, insights and strengths. The second speaker of the evening will be Ashlee Westerhold, director of the Farm and Ranch Transition Office at Kansas State University. She will focus on ways to "Start the Family Talking."

The second meeting of the series (Nov. 30) will focus on working with professionals to assist with the process. Westerhold

will return and talk about "Picking your Professional Team." Jeanie Schainost, an Estate and Business Planning Attorney from Garnett, will follow and discuss options for "Dealing with Heirs that are away from the Farm or Business."

Jeanie Schainost will present the final session (December 5th) on "Estate Planning Tools and Tax Implications." She will also set some time aside to help answer questions.

Each of the sessions will build on the previous session and at the completion of the series, participants will be prepared to discuss estate planning with their lawyer. Remember, creating an estate plan gives you control of your legacy. No matter the size of your estate, having a plan is key to ensuring

your heirs inherit the assets you want them to receive.

If you plan to attend, please register by Friday, November 4. Refreshments will be served each evening. If you have questions, please call Rod Schaub, Frontier District livestock agent, at 785-828-4438.

K-State Research and Extension is committed to providing equal opportunity for participation in all programs, services and activities. Accommodations for persons with disabilities may be requested by contacting the event contact, Rod Schaub, two weeks prior to the start of the event (October 24) at 785-828-4438 or rschaub@ksu.edu. Requests received after this date will be honored when it is feasible to do so.

USDA grants \$670 million to food supply groups for pandemic relief

USDA announced 15 groups will get \$670 million in funds to farm and meatpacking workers that were negatively impacted during the pandemic, incurring expenses via the outbreak as they were deemed essential workers.

The funds would amount to \$600 per person and start in the fall, and \$20 million was earmarked for a pilot program that would recognize the efforts of grocery workers. According to USDA, the aim is to defray some of the costs incurred by workers relative to personal protective equipment, child care and expenses for testing and quarantining.



MANHATTAN

COMM. CO. INC.

STARTING 10:00 A.M. ON WEIGH COWS FOLLOWED BY STOCKER FEEDERS — 11:00 A.M.

OFFICE PHONE 785-776-4815 • OWNER JOHN CLINE

CATTLE AUCTION EVERY FRIDAY

Our CONSIGNMENTS can now be viewed after 12 Noon on Mondays by going to www.grassandgrain.com & logging onto the online subscription

ONLINE BIDDING AVAILABLE AT LMAAUCTIONS.COM

<p>For our sale Friday, October 14th, steer & heifer calves that were weaned sold at mostly steady prices while the unweaned calves were selling weaker. Stocker feeder cattle sold unevenly steady on the kind offered. A large run of cull cows sold \$3 to \$5 lower.</p> <p>BULL & STEER CALVES — 275 LBS.</p> <table border="0" style="width: 100%;"> <tr><td>Manhattan</td><td>5 blk</td><td>283@244.00</td></tr> <tr><td>Osage City</td><td>5 bwf</td><td>312@229.00</td></tr> <tr><td>Manhattan</td><td>6 blk</td><td>407@220.00</td></tr> <tr><td>Mayetta</td><td>4 blk</td><td>478@209.00</td></tr> <tr><td>Osage City</td><td>8 blk</td><td>426@209.00</td></tr> <tr><td>Onaga</td><td>6 blk</td><td>418@206.00</td></tr> <tr><td>Easton</td><td>7 blk</td><td>502@196.00</td></tr> <tr><td>Onaga</td><td>6 xbred</td><td>483@194.00</td></tr> <tr><td>Eskridge</td><td>7 blk</td><td>538@192.00</td></tr> <tr><td>Mayetta</td><td>6 blk</td><td>403@190.00</td></tr> <tr><td>Mayetta</td><td>9 blk</td><td>535@186.00</td></tr> <tr><td>Havensville</td><td>6 blk</td><td>540@181.00</td></tr> </table> <p>STEERS — 550-900 LBS.</p> <table border="0" style="width: 100%;"> <tr><td>Onaga</td><td>26 blk</td><td>574@188.00</td></tr> <tr><td>Eskridge</td><td>5 xbred</td><td>614@188.00</td></tr> <tr><td>Onaga</td><td>23 blk</td><td>678@179.75</td></tr> <tr><td>Leavenworth</td><td>61 blk</td><td>777@176.00</td></tr> <tr><td>Leavenworth</td><td>54 Char</td><td>846@174.50</td></tr> <tr><td>Leavenworth</td><td>45 blk</td><td>850@174.25</td></tr> <tr><td>Manhattan</td><td>13 blk</td><td>878@172.00</td></tr> <tr><td>Westmoreland</td><td>4 blk</td><td>740@171.00</td></tr> <tr><td>Vermillion</td><td>7 blk</td><td>726@171.00</td></tr> <tr><td>Randolph</td><td>4 blk</td><td>583@169.00</td></tr> <tr><td>Onaga</td><td>5 blk</td><td>790@168.00</td></tr> <tr><td>Williamsburg</td><td>5 xbred</td><td>664@167.00</td></tr> <tr><td>Vermillion</td><td>12 blk</td><td>890@165.50</td></tr> <tr><td>Clay Center</td><td>5 blk</td><td>764@165.00</td></tr> <tr><td>Eskridge</td><td>4 xbred</td><td>813@155.00</td></tr> </table> <p>HEIFER CALVES — 350-550 LBS.</p> <table border="0" style="width: 100%;"> <tr><td>Manhattan</td><td>12 blk</td><td>390@194.00</td></tr> <tr><td>Osage City</td><td>9 blk</td><td>428@189.00</td></tr> <tr><td>Osage City</td><td>4 blk</td><td>351@189.00</td></tr> <tr><td>Onaga</td><td>9 blk</td><td>417@186.00</td></tr> <tr><td>Osage City</td><td>12 bwf</td><td>462@183.50</td></tr> <tr><td>Manhattan</td><td>11 blk</td><td>330@182.00</td></tr> <tr><td>Mayetta</td><td>6 blk</td><td>445@181.00</td></tr> <tr><td>Easton</td><td>6 blk</td><td>504@181.00</td></tr> <tr><td>Eskridge</td><td>4 blk</td><td>520@180.00</td></tr> <tr><td>Onaga</td><td>12 blk</td><td>503@176.00</td></tr> <tr><td>Mayetta</td><td>5 blk</td><td>524@172.00</td></tr> <tr><td>Onaga</td><td>6 xbred</td><td>491@171.50</td></tr> <tr><td>Mayetta</td><td>4 blk</td><td>495@166.00</td></tr> <tr><td>Topeka</td><td>4 blk</td><td>495@156.00</td></tr> <tr><td>Williamsburg</td><td>4 xbred</td><td>533@151.00</td></tr> </table> <p>HEIFERS — 575-725 LBS.</p> <table border="0" style="width: 100%;"> <tr><td>Allen</td><td>4 blk</td><td>615@170.00</td></tr> </table>	Manhattan	5 blk	283@244.00	Osage City	5 bwf	312@229.00	Manhattan	6 blk	407@220.00	Mayetta	4 blk	478@209.00	Osage City	8 blk	426@209.00	Onaga	6 blk	418@206.00	Easton	7 blk	502@196.00	Onaga	6 xbred	483@194.00	Eskridge	7 blk	538@192.00	Mayetta	6 blk	403@190.00	Mayetta	9 blk	535@186.00	Havensville	6 blk	540@181.00	Onaga	26 blk	574@188.00	Eskridge	5 xbred	614@188.00	Onaga	23 blk	678@179.75	Leavenworth	61 blk	777@176.00	Leavenworth	54 Char	846@174.50	Leavenworth	45 blk	850@174.25	Manhattan	13 blk	878@172.00	Westmoreland	4 blk	740@171.00	Vermillion	7 blk	726@171.00	Randolph	4 blk	583@169.00	Onaga	5 blk	790@168.00	Williamsburg	5 xbred	664@167.00	Vermillion	12 blk	890@165.50	Clay Center	5 blk	764@165.00	Eskridge	4 xbred	813@155.00	Manhattan	12 blk	390@194.00	Osage City	9 blk	428@189.00	Osage City	4 blk	351@189.00	Onaga	9 blk	417@186.00	Osage City	12 bwf	462@183.50	Manhattan	11 blk	330@182.00	Mayetta	6 blk	445@181.00	Easton	6 blk	504@181.00	Eskridge	4 blk	520@180.00	Onaga	12 blk	503@176.00	Mayetta	5 blk	524@172.00	Onaga	6 xbred	491@171.50	Mayetta	4 blk	495@166.00	Topeka	4 blk	495@156.00	Williamsburg	4 xbred	533@151.00	Allen	4 blk	615@170.00	<p>COWS & HEIFERETTES — 825-1,900 LBS.</p> <table border="0" style="width: 100%;"> <tr><td>Easton</td><td>1 blk</td><td>840@147.00</td></tr> <tr><td>Leavenworth</td><td>2 bwf</td><td>885@145.00</td></tr> <tr><td>Alma</td><td>1 blk</td><td>940@144.00</td></tr> <tr><td>Easton</td><td>1 blk</td><td>1130@130.00</td></tr> <tr><td>Onaga</td><td>1 blk</td><td>1065@119.00</td></tr> <tr><td>Alma</td><td>1 blk</td><td>1020@117.00</td></tr> <tr><td>Easton</td><td>1 blk</td><td>1260@115.00</td></tr> <tr><td>Alma</td><td>1 blk</td><td>900@106.00</td></tr> <tr><td>Mayetta</td><td>1 blk</td><td>795@104.00</td></tr> <tr><td>Mayetta</td><td>1 bwf</td><td>880@87.00</td></tr> <tr><td>Manhattan</td><td>1 Herf</td><td>1285@85.00</td></tr> <tr><td>St. George</td><td>1 Herf</td><td>1640@84.00</td></tr> <tr><td>Randolph</td><td>1 bwf</td><td>1885@83.50</td></tr> <tr><td>Basehor</td><td>1 blk</td><td>1615@82.00</td></tr> <tr><td>Riley</td><td>1 blk</td><td>1220@81.00</td></tr> <tr><td>Junction City</td><td>1 xbred</td><td>1070@81.00</td></tr> <tr><td>Leavenworth</td><td>1 bwf</td><td>1505@80.00</td></tr> <tr><td>Randolph</td><td>1 blk</td><td>1655@79.00</td></tr> <tr><td>Westmoreland</td><td>1 blk</td><td>1455@78.00</td></tr> <tr><td>Clay Center</td><td>1 blk</td><td>1370@77.00</td></tr> <tr><td>Manhattan</td><td>1 blk</td><td>1500@77.00</td></tr> <tr><td>Onaga</td><td>1 blk</td><td>1555@76.00</td></tr> <tr><td>Westmoreland</td><td>1 blk</td><td>1395@75.00</td></tr> <tr><td>Burns</td><td>1 xbred</td><td>1135@74.00</td></tr> <tr><td>Manhattan</td><td>1 blk</td><td>1620@74.00</td></tr> <tr><td>Westmoreland</td><td>1 blk</td><td>1225@72.50</td></tr> <tr><td>Junction City</td><td>1 xbred</td><td>1020@69.00</td></tr> <tr><td>Junction City</td><td>xbred</td><td>1180@68.50</td></tr> <tr><td>Seneca</td><td>1 xbred</td><td>1120@63.00</td></tr> <tr><td>Seneca</td><td>2 xbred</td><td>1037@62.00</td></tr> <tr><td>Manhattan</td><td>1 xbred</td><td>1245@62.00</td></tr> <tr><td>Seneca</td><td>1 xbred</td><td>1145@61.50</td></tr> <tr><td>Manhattan</td><td>1 xbred</td><td>870@60.00</td></tr> <tr><td>Seneca</td><td>1 xbred</td><td>1145@59.50</td></tr> <tr><td>Seneca</td><td>1 xbred</td><td>1185@58.50</td></tr> <tr><td>Frankfort</td><td>1 xbred</td><td>1060@58.50</td></tr> <tr><td>Junction City</td><td>1 xbred</td><td>1215@57.50</td></tr> <tr><td>Clay Center</td><td>1 blk</td><td>1155@56.50</td></tr> <tr><td>Wamego</td><td>1 blk</td><td>1045@55.50</td></tr> <tr><td>Seneca</td><td>1 blk</td><td>1085@54.50</td></tr> <tr><td>Alma</td><td>1 blk</td><td>1280@51.00</td></tr> </table> <p>BULLS — 725-2,100 LBS.</p> <table border="0" style="width: 100%;"> <tr><td>Mayetta</td><td>1 xbred</td><td>735@130.00</td></tr> <tr><td>Mayetta</td><td>1 bwf</td><td>1025@106.00</td></tr> <tr><td>Maple Hill</td><td>1 blk</td><td>1980@103.50</td></tr> <tr><td>Leavenworth</td><td>1 bwf</td><td>1740@102.50</td></tr> <tr><td>Paxico</td><td>1 xbred</td><td>2100@101.50</td></tr> <tr><td>Mayetta</td><td>1 bwf</td><td>1800@99.00</td></tr> <tr><td>Mayetta</td><td>1 blk</td><td>890@95.00</td></tr> </table>	Easton	1 blk	840@147.00	Leavenworth	2 bwf	885@145.00	Alma	1 blk	940@144.00	Easton	1 blk	1130@130.00	Onaga	1 blk	1065@119.00	Alma	1 blk	1020@117.00	Easton	1 blk	1260@115.00	Alma	1 blk	900@106.00	Mayetta	1 blk	795@104.00	Mayetta	1 bwf	880@87.00	Manhattan	1 Herf	1285@85.00	St. George	1 Herf	1640@84.00	Randolph	1 bwf	1885@83.50	Basehor	1 blk	1615@82.00	Riley	1 blk	1220@81.00	Junction City	1 xbred	1070@81.00	Leavenworth	1 bwf	1505@80.00	Randolph	1 blk	1655@79.00	Westmoreland	1 blk	1455@78.00	Clay Center	1 blk	1370@77.00	Manhattan	1 blk	1500@77.00	Onaga	1 blk	1555@76.00	Westmoreland	1 blk	1395@75.00	Burns	1 xbred	1135@74.00	Manhattan	1 blk	1620@74.00	Westmoreland	1 blk	1225@72.50	Junction City	1 xbred	1020@69.00	Junction City	xbred	1180@68.50	Seneca	1 xbred	1120@63.00	Seneca	2 xbred	1037@62.00	Manhattan	1 xbred	1245@62.00	Seneca	1 xbred	1145@61.50	Manhattan	1 xbred	870@60.00	Seneca	1 xbred	1145@59.50	Seneca	1 xbred	1185@58.50	Frankfort	1 xbred	1060@58.50	Junction City	1 xbred	1215@57.50	Clay Center	1 blk	1155@56.50	Wamego	1 blk	1045@55.50	Seneca	1 blk	1085@54.50	Alma	1 blk	1280@51.00	Mayetta	1 xbred	735@130.00	Mayetta	1 bwf	1025@106.00	Maple Hill	1 blk	1980@103.50	Leavenworth	1 bwf	1740@102.50	Paxico	1 xbred	2100@101.50	Mayetta	1 bwf	1800@99.00	Mayetta	1 blk	890@95.00	<p>BABY CALVES</p> <table border="0" style="width: 100%;"> <tr><td>Alma</td><td>1 Char</td><td>@285.00</td></tr> <tr><td>Manhattan</td><td>1 blk</td><td>@275.00</td></tr> <tr><td>Alma</td><td>1 Char</td><td>@225.00</td></tr> <tr><td>Axtell</td><td>1 xbred</td><td>@155.00</td></tr> <tr><td>Burns</td><td>1 xbred</td><td>@125.00</td></tr> <tr><td>Axtell</td><td>4 Hol</td><td>@95.00</td></tr> </table> <p>1ST CALF HEIFER PAIRS</p> <table border="0" style="width: 100%;"> <tr><th colspan="2">AGE</th></tr> <tr><td>White City</td><td>4 bwf 2 @2650.00</td></tr> <tr><td>White City</td><td>2 Rd Ang 2 @2650.00</td></tr> <tr><td>White City</td><td>37 blk 2 @2600.00</td></tr> <tr><td>Sabetha</td><td>7 blk 2 @2550.00</td></tr> <tr><td>Sabetha</td><td>6 blk 2 @2400.00</td></tr> <tr><td>White City</td><td>3 Rd Ang 2 @2150.00</td></tr> <tr><td>Seneca</td><td>2 blk 2 @2150.00</td></tr> <tr><td>Seneca</td><td>6 blk 2 @2000.00</td></tr> <tr><td>Seneca</td><td>7 blk 2 @1850.00</td></tr> </table> <p>BRED 1ST CALF HEIFERS</p> <table border="0" style="width: 100%;"> <tr><th colspan="2">AGE MO</th></tr> <tr><td>Manhattan</td><td>12 blk 2 4 @1685.00</td></tr> <tr><td>Manhattan</td><td>14 blk 2 4-5 @1660.00</td></tr> <tr><td>Manhattan</td><td>3 blk 2 2-3 @1100.00</td></tr> </table> <p>BREEDING BULLS</p> <table border="0" style="width: 100%;"> <tr><td>Axtell</td><td>1 Red Angus</td><td>@3200.00</td></tr> <tr><td>Easton</td><td>1 Angus</td><td>@2100.00</td></tr> <tr><td>St. Joseph</td><td>1 Angus</td><td>@2000.00</td></tr> <tr><td>Westmoreland</td><td>1 blk</td><td>@1750.00</td></tr> </table> <p>BRED COWS</p> <table border="0" style="width: 100%;"> <tr><th colspan="2">AGE BRED</th></tr> <tr><td>Morrowville</td><td>8 blk 6 6 @1520.00</td></tr> <tr><td>Morrowville</td><td>15 blk 2-6 7-8 @1500.00</td></tr> </table>	Alma	1 Char	@285.00	Manhattan	1 blk	@275.00	Alma	1 Char	@225.00	Axtell	1 xbred	@155.00	Burns	1 xbred	@125.00	Axtell	4 Hol	@95.00	AGE		White City	4 bwf 2 @2650.00	White City	2 Rd Ang 2 @2650.00	White City	37 blk 2 @2600.00	Sabetha	7 blk 2 @2550.00	Sabetha	6 blk 2 @2400.00	White City	3 Rd Ang 2 @2150.00	Seneca	2 blk 2 @2150.00	Seneca	6 blk 2 @2000.00	Seneca	7 blk 2 @1850.00	AGE MO		Manhattan	12 blk 2 4 @1685.00	Manhattan	14 blk 2 4-5 @1660.00	Manhattan	3 blk 2 2-3 @1100.00	Axtell	1 Red Angus	@3200.00	Easton	1 Angus	@2100.00	St. Joseph	1 Angus	@2000.00	Westmoreland	1 blk	@1750.00	AGE BRED		Morrowville	8 blk 6 6 @1520.00	Morrowville	15 blk 2-6 7-8 @1500.00	<p>MORROWVILLE</p> <table border="0" style="width: 100%;"> <tr><td>Morrowville</td><td>4 blk</td><td>3-4</td><td>6</td><td>@1485.00</td></tr> <tr><td>Morrowville</td><td>6 Rd Ang</td><td>3-5</td><td>7-8</td><td>@1475.00</td></tr> <tr><td>Easton</td><td>2 blk</td><td>5</td><td>6</td><td>@1450.00</td></tr> <tr><td>Mayetta</td><td>9 blk</td><td>3</td><td>4-5</td><td>@1400.00</td></tr> <tr><td>Morrowville</td><td>3 blk</td><td>7-8</td><td>6-8</td><td>@1385.00</td></tr> <tr><td>Mayetta</td><td>5 blk</td><td>3</td><td>4</td><td>@1325.00</td></tr> <tr><td>Paxico</td><td>2 xbred</td><td>2</td><td>7-8</td><td>@1300.00</td></tr> <tr><td>Mayetta</td><td>4 blk</td><td>5</td><td>4-6</td><td>@1285.00</td></tr> <tr><td>Mayetta</td><td>8 mix</td><td>6-8,SS</td><td>4-8</td><td>@1100.00</td></tr> <tr><td>Mayetta</td><td>5 xbred</td><td>3</td><td>2-5</td><td>@1085.00</td></tr> <tr><td>Mayetta</td><td>3 blk</td><td>3</td><td>2</td><td>@1050.00</td></tr> <tr><td>Mayetta</td><td>7 mix</td><td>6-8</td><td>4-6</td><td>@1025.00</td></tr> <tr><td>Mayetta</td><td>4 bwf</td><td>3</td><td>3-5</td><td>@1025.00</td></tr> <tr><td>Mayetta</td><td>2 blk</td><td>SS</td><td>8</td><td>@1025.00</td></tr> </table> <p>COW CALF PAIRS</p> <table border="0" style="width: 100%;"> <tr><th colspan="2">AGE</th></tr> <tr><td>Soldier</td><td>7 blk 4 @2300.00</td></tr> <tr><td>Soldier</td><td>6 blk 5-6 @2200.00</td></tr> <tr><td>Alma</td><td>2 blk 5-6 @2200.00</td></tr> <tr><td>Alma</td><td>4 blk 5-6 @2125.00</td></tr> <tr><td>Easton</td><td>6 blk 5 @2125.00</td></tr> <tr><td>Soldier</td><td>13 blk 4-6 @2100.00</td></tr> <tr><td>Dwight</td><td>5 blk 3 @2085.00</td></tr> <tr><td>Oskaloosa</td><td>3 blk 3-5 @2050.00</td></tr> <tr><td>Mayetta</td><td>3 blk 3-5 @2000.00</td></tr> <tr><td>Dwight</td><td>8 blk 3-4 @1975.00</td></tr> <tr><td>Dwight</td><td>8 blk 3-4 @1960.00</td></tr> <tr><td>Alma</td><td>7 blk 4-6 @1950.00</td></tr> <tr><td>Overbrook</td><td>5 Rd Ang 5-6 @1950.00</td></tr> <tr><td>Burns</td><td>3 Rd Ang 5 @1950.00</td></tr> <tr><td>Dwight</td><td>12 blk 3-4 @1925.00</td></tr> <tr><td>Alma</td><td>6 blk 4-6 @1925.00</td></tr> <tr><td>Overbrook</td><td>2 Rd Ang 5 @1925.00</td></tr> <tr><td>Dwight</td><td>2 blk 3 @1910.00</td></tr> <tr><td>Dwight</td><td>6 blk 5 @1885.00</td></tr> <tr><td>Burns</td><td>4 Rd Ang 5 @1875.00</td></tr> <tr><td>Burns</td><td>7 Rd Ang 4-5 @1850.00</td></tr> <tr><td>Burns</td><td>7 Rd Ang 3-4 @1835.00</td></tr> <tr><td>Prairie Village</td><td>6 Rd Ang 4-5 @1800.00</td></tr> <tr><td>Burns</td><td>3 Rd Ang 3-6 @1775.00</td></tr> <tr><td>Oskaloosa</td><td>3 xbred 4-5 @1700.00</td></tr> <tr><td>Dwight</td><td>4 blk 6,SS @1575.00</td></tr> <tr><td>Burns</td><td>3 blk 00 @1535.00</td></tr> <tr><td>Burns</td><td>3 blk BM,SS @1425.00</td></tr> <tr><td>Easton</td><td>2 blk BM,SS @1425.00</td></tr> <tr><td>Mayetta</td><td>3 blk 3-5,SS @1325.00</td></tr> <tr><td>Mayetta</td><td>2 blk 5-7 @1175.00</td></tr> </table>	Morrowville	4 blk	3-4	6	@1485.00	Morrowville	6 Rd Ang	3-5	7-8	@1475.00	Easton	2 blk	5	6	@1450.00	Mayetta	9 blk	3	4-5	@1400.00	Morrowville	3 blk	7-8	6-8	@1385.00	Mayetta	5 blk	3	4	@1325.00	Paxico	2 xbred	2	7-8	@1300.00	Mayetta	4 blk	5	4-6	@1285.00	Mayetta	8 mix	6-8,SS	4-8	@1100.00	Mayetta	5 xbred	3	2-5	@1085.00	Mayetta	3 blk	3	2	@1050.00	Mayetta	7 mix	6-8	4-6	@1025.00	Mayetta	4 bwf	3	3-5	@1025.00	Mayetta	2 blk	SS	8	@1025.00	AGE		Soldier	7 blk 4 @2300.00	Soldier	6 blk 5-6 @2200.00	Alma	2 blk 5-6 @2200.00	Alma	4 blk 5-6 @2125.00	Easton	6 blk 5 @2125.00	Soldier	13 blk 4-6 @2100.00	Dwight	5 blk 3 @2085.00	Oskaloosa	3 blk 3-5 @2050.00	Mayetta	3 blk 3-5 @2000.00	Dwight	8 blk 3-4 @1975.00	Dwight	8 blk 3-4 @1960.00	Alma	7 blk 4-6 @1950.00	Overbrook	5 Rd Ang 5-6 @1950.00	Burns	3 Rd Ang 5 @1950.00	Dwight	12 blk 3-4 @1925.00	Alma	6 blk 4-6 @1925.00	Overbrook	2 Rd Ang 5 @1925.00	Dwight	2 blk 3 @1910.00	Dwight	6 blk 5 @1885.00	Burns	4 Rd Ang 5 @1875.00	Burns	7 Rd Ang 4-5 @1850.00	Burns	7 Rd Ang 3-4 @1835.00	Prairie Village	6 Rd Ang 4-5 @1800.00	Burns	3 Rd Ang 3-6 @1775.00	Oskaloosa	3 xbred 4-5 @1700.00	Dwight	4 blk 6,SS @1575.00	Burns	3 blk 00 @1535.00	Burns	3 blk BM,SS @1425.00	Easton	2 blk BM,SS @1425.00	Mayetta	3 blk 3-5,SS @1325.00	Mayetta	2 blk 5-7 @1175.00
Manhattan	5 blk	283@244.00																																																																																																																																																																																																																																																																																																																																																																																																																																																																																								
Osage City	5 bwf	312@229.00																																																																																																																																																																																																																																																																																																																																																																																																																																																																																								
Manhattan	6 blk	407@220.00																																																																																																																																																																																																																																																																																																																																																																																																																																																																																								
Mayetta	4 blk	478@209.00																																																																																																																																																																																																																																																																																																																																																																																																																																																																																								
Osage City	8 blk	426@209.00																																																																																																																																																																																																																																																																																																																																																																																																																																																																																								
Onaga	6 blk	418@206.00																																																																																																																																																																																																																																																																																																																																																																																																																																																																																								
Easton	7 blk	502@196.00																																																																																																																																																																																																																																																																																																																																																																																																																																																																																								
Onaga	6 xbred	483@194.00																																																																																																																																																																																																																																																																																																																																																																																																																																																																																								
Eskridge	7 blk	538@192.00																																																																																																																																																																																																																																																																																																																																																																																																																																																																																								
Mayetta	6 blk	403@190.00																																																																																																																																																																																																																																																																																																																																																																																																																																																																																								
Mayetta	9 blk	535@186.00																																																																																																																																																																																																																																																																																																																																																																																																																																																																																								
Havensville	6 blk	540@181.00																																																																																																																																																																																																																																																																																																																																																																																																																																																																																								
Onaga	26 blk	574@188.00																																																																																																																																																																																																																																																																																																																																																																																																																																																																																								
Eskridge	5 xbred	614@188.00																																																																																																																																																																																																																																																																																																																																																																																																																																																																																								
Onaga	23 blk	678@179.75																																																																																																																																																																																																																																																																																																																																																																																																																																																																																								
Leavenworth	61 blk	777@176.00																																																																																																																																																																																																																																																																																																																																																																																																																																																																																								
Leavenworth	54 Char	846@174.50																																																																																																																																																																																																																																																																																																																																																																																																																																																																																								
Leavenworth	45 blk	850@174.25																																																																																																																																																																																																																																																																																																																																																																																																																																																																																								
Manhattan	13 blk	878@172.00																																																																																																																																																																																																																																																																																																																																																																																																																																																																																								
Westmoreland	4 blk	740@171.00																																																																																																																																																																																																																																																																																																																																																																																																																																																																																								
Vermillion	7 blk	726@171.00																																																																																																																																																																																																																																																																																																																																																																																																																																																																																								
Randolph	4 blk	583@169.00																																																																																																																																																																																																																																																																																																																																																																																																																																																																																								
Onaga	5 blk	790@168.00																																																																																																																																																																																																																																																																																																																																																																																																																																																																																								
Williamsburg	5 xbred	664@167.00																																																																																																																																																																																																																																																																																																																																																																																																																																																																																								
Vermillion	12 blk	890@165.50																																																																																																																																																																																																																																																																																																																																																																																																																																																																																								
Clay Center	5 blk	764@165.00																																																																																																																																																																																																																																																																																																																																																																																																																																																																																								
Eskridge	4 xbred	813@155.00																																																																																																																																																																																																																																																																																																																																																																																																																																																																																								
Manhattan	12 blk	390@194.00																																																																																																																																																																																																																																																																																																																																																																																																																																																																																								
Osage City	9 blk	428@189.00																																																																																																																																																																																																																																																																																																																																																																																																																																																																																								
Osage City	4 blk	351@189.00																																																																																																																																																																																																																																																																																																																																																																																																																																																																																								
Onaga	9 blk	417@186.00																																																																																																																																																																																																																																																																																																																																																																																																																																																																																								
Osage City	12 bwf	462@183.50																																																																																																																																																																																																																																																																																																																																																																																																																																																																																								
Manhattan	11 blk	330@182.00																																																																																																																																																																																																																																																																																																																																																																																																																																																																																								
Mayetta	6 blk	445@181.00																																																																																																																																																																																																																																																																																																																																																																																																																																																																																								
Easton	6 blk	504@181.00																																																																																																																																																																																																																																																																																																																																																																																																																																																																																								
Eskridge	4 blk	520@180.00																																																																																																																																																																																																																																																																																																																																																																																																																																																																																								
Onaga	12 blk	503@176.00																																																																																																																																																																																																																																																																																																																																																																																																																																																																																								
Mayetta	5 blk	524@172.00																																																																																																																																																																																																																																																																																																																																																																																																																																																																																								
Onaga	6 xbred	491@171.50																																																																																																																																																																																																																																																																																																																																																																																																																																																																																								
Mayetta	4 blk	495@166.00																																																																																																																																																																																																																																																																																																																																																																																																																																																																																								
Topeka	4 blk	495@156.00																																																																																																																																																																																																																																																																																																																																																																																																																																																																																								
Williamsburg	4 xbred	533@151.00																																																																																																																																																																																																																																																																																																																																																																																																																																																																																								
Allen	4 blk	615@170.00																																																																																																																																																																																																																																																																																																																																																																																																																																																																																								
Easton	1 blk	840@147.00																																																																																																																																																																																																																																																																																																																																																																																																																																																																																								
Leavenworth	2 bwf	885@145.00																																																																																																																																																																																																																																																																																																																																																																																																																																																																																								
Alma	1 blk	940@144.00																																																																																																																																																																																																																																																																																																																																																																																																																																																																																								
Easton	1 blk	1130@130.00																																																																																																																																																																																																																																																																																																																																																																																																																																																																																								
Onaga	1 blk	1065@119.00																																																																																																																																																																																																																																																																																																																																																																																																																																																																																								
Alma	1 blk	1020@117.00																																																																																																																																																																																																																																																																																																																																																																																																																																																																																								
Easton	1 blk	1260@115.00																																																																																																																																																																																																																																																																																																																																																																																																																																																																																								
Alma	1 blk	900@106.00																																																																																																																																																																																																																																																																																																																																																																																																																																																																																								
Mayetta	1 blk	795@104.00																																																																																																																																																																																																																																																																																																																																																																																																																																																																																								
Mayetta	1 bwf	880@87.00																																																																																																																																																																																																																																																																																																																																																																																																																																																																																								
Manhattan	1 Herf	1285@85.00																																																																																																																																																																																																																																																																																																																																																																																																																																																																																								
St. George	1 Herf	1640@84.00																																																																																																																																																																																																																																																																																																																																																																																																																																																																																								
Randolph	1 bwf	1885@83.50																																																																																																																																																																																																																																																																																																																																																																																																																																																																																								
Basehor	1 blk	1615@82.00																																																																																																																																																																																																																																																																																																																																																																																																																																																																																								
Riley	1 blk	1220@81.00																																																																																																																																																																																																																																																																																																																																																																																																																																																																																								
Junction City	1 xbred	1070@81.00																																																																																																																																																																																																																																																																																																																																																																																																																																																																																								
Leavenworth	1 bwf	1505@80.00																																																																																																																																																																																																																																																																																																																																																																																																																																																																																								
Randolph	1 blk	1655@79.00																																																																																																																																																																																																																																																																																																																																																																																																																																																																																								
Westmoreland	1 blk	1455@78.00																																																																																																																																																																																																																																																																																																																																																																																																																																																																																								
Clay Center	1 blk	1370@77.00																																																																																																																																																																																																																																																																																																																																																																																																																																																																																								
Manhattan	1 blk	1500@77.00																																																																																																																																																																																																																																																																																																																																																																																																																																																																																								
Onaga	1 blk	1555@76.00																																																																																																																																																																																																																																																																																																																																																																																																																																																																																								
Westmoreland	1 blk	1395@75.00																																																																																																																																																																																																																																																																																																																																																																																																																																																																																								
Burns	1 xbred	1135@74.00																																																																																																																																																																																																																																																																																																																																																																																																																																																																																								
Manhattan	1 blk	1620@74.00																																																																																																																																																																																																																																																																																																																																																																																																																																																																																								
Westmoreland	1 blk	1225@72.50																																																																																																																																																																																																																																																																																																																																																																																																																																																																																								
Junction City	1 xbred	1020@69.00																																																																																																																																																																																																																																																																																																																																																																																																																																																																																								
Junction City	xbred	1180@68.50																																																																																																																																																																																																																																																																																																																																																																																																																																																																																								
Seneca	1 xbred	1120@63.00																																																																																																																																																																																																																																																																																																																																																																																																																																																																																								
Seneca	2 xbred	1037@62.00																																																																																																																																																																																																																																																																																																																																																																																																																																																																																								
Manhattan	1 xbred	1245@62.00																																																																																																																																																																																																																																																																																																																																																																																																																																																																																								
Seneca	1 xbred	1145@61.50																																																																																																																																																																																																																																																																																																																																																																																																																																																																																								
Manhattan	1 xbred	870@60.00																																																																																																																																																																																																																																																																																																																																																																																																																																																																																								
Seneca	1 xbred	1145@59.50																																																																																																																																																																																																																																																																																																																																																																																																																																																																																								
Seneca	1 xbred	1185@58.50																																																																																																																																																																																																																																																																																																																																																																																																																																																																																								
Frankfort	1 xbred	1060@58.50																																																																																																																																																																																																																																																																																																																																																																																																																																																																																								
Junction City	1 xbred	1215@57.50																																																																																																																																																																																																																																																																																																																																																																																																																																																																																								
Clay Center	1 blk	1155@56.50																																																																																																																																																																																																																																																																																																																																																																																																																																																																																								
Wamego	1 blk	1045@55.50																																																																																																																																																																																																																																																																																																																																																																																																																																																																																								
Seneca	1 blk	1085@54.50																																																																																																																																																																																																																																																																																																																																																																																																																																																																																								
Alma	1 blk	1280@51.00																																																																																																																																																																																																																																																																																																																																																																																																																																																																																								
Mayetta	1 xbred	735@130.00																																																																																																																																																																																																																																																																																																																																																																																																																																																																																								
Mayetta	1 bwf	1025@106.00																																																																																																																																																																																																																																																																																																																																																																																																																																																																																								
Maple Hill	1 blk	1980@103.50																																																																																																																																																																																																																																																																																																																																																																																																																																																																																								
Leavenworth	1 bwf	1740@102.50																																																																																																																																																																																																																																																																																																																																																																																																																																																																																								
Paxico	1 xbred	2100@101.50																																																																																																																																																																																																																																																																																																																																																																																																																																																																																								
Mayetta	1 bwf	1800@99.00																																																																																																																																																																																																																																																																																																																																																																																																																																																																																								
Mayetta	1 blk	890@95.00																																																																																																																																																																																																																																																																																																																																																																																																																																																																																								
Alma	1 Char	@285.00																																																																																																																																																																																																																																																																																																																																																																																																																																																																																								
Manhattan	1 blk	@275.00																																																																																																																																																																																																																																																																																																																																																																																																																																																																																								
Alma	1 Char	@225.00																																																																																																																																																																																																																																																																																																																																																																																																																																																																																								
Axtell	1 xbred	@155.00																																																																																																																																																																																																																																																																																																																																																																																																																																																																																								
Burns	1 xbred	@125.00																																																																																																																																																																																																																																																																																																																																																																																																																																																																																								
Axtell	4 Hol	@95.00																																																																																																																																																																																																																																																																																																																																																																																																																																																																																								
AGE																																																																																																																																																																																																																																																																																																																																																																																																																																																																																										
White City	4 bwf 2 @2650.00																																																																																																																																																																																																																																																																																																																																																																																																																																																																																									
White City	2 Rd Ang 2 @2650.00																																																																																																																																																																																																																																																																																																																																																																																																																																																																																									
White City	37 blk 2 @2600.00																																																																																																																																																																																																																																																																																																																																																																																																																																																																																									
Sabetha	7 blk 2 @2550.00																																																																																																																																																																																																																																																																																																																																																																																																																																																																																									
Sabetha	6 blk 2 @2400.00																																																																																																																																																																																																																																																																																																																																																																																																																																																																																									
White City	3 Rd Ang 2 @2150.00																																																																																																																																																																																																																																																																																																																																																																																																																																																																																									
Seneca	2 blk 2 @2150.00																																																																																																																																																																																																																																																																																																																																																																																																																																																																																									
Seneca	6 blk 2 @2000.00																																																																																																																																																																																																																																																																																																																																																																																																																																																																																									
Seneca	7 blk 2 @1850.00																																																																																																																																																																																																																																																																																																																																																																																																																																																																																									
AGE MO																																																																																																																																																																																																																																																																																																																																																																																																																																																																																										
Manhattan	12 blk 2 4 @1685.00																																																																																																																																																																																																																																																																																																																																																																																																																																																																																									
Manhattan	14 blk 2 4-5 @1660.00																																																																																																																																																																																																																																																																																																																																																																																																																																																																																									
Manhattan	3 blk 2 2-3 @1100.00																																																																																																																																																																																																																																																																																																																																																																																																																																																																																									
Axtell	1 Red Angus	@3200.00																																																																																																																																																																																																																																																																																																																																																																																																																																																																																								
Easton	1 Angus	@2100.00																																																																																																																																																																																																																																																																																																																																																																																																																																																																																								
St. Joseph	1 Angus	@2000.00																																																																																																																																																																																																																																																																																																																																																																																																																																																																																								
Westmoreland	1 blk	@1750.00																																																																																																																																																																																																																																																																																																																																																																																																																																																																																								
AGE BRED																																																																																																																																																																																																																																																																																																																																																																																																																																																																																										
Morrowville	8 blk 6 6 @1520.00																																																																																																																																																																																																																																																																																																																																																																																																																																																																																									
Morrowville	15 blk 2-6 7-8 @1500.00																																																																																																																																																																																																																																																																																																																																																																																																																																																																																									
Morrowville	4 blk	3-4	6	@1485.00																																																																																																																																																																																																																																																																																																																																																																																																																																																																																						
Morrowville	6 Rd Ang	3-5	7-8	@1475.00																																																																																																																																																																																																																																																																																																																																																																																																																																																																																						
Easton	2 blk	5	6	@1450.00																																																																																																																																																																																																																																																																																																																																																																																																																																																																																						
Mayetta	9 blk	3	4-5	@1400.00																																																																																																																																																																																																																																																																																																																																																																																																																																																																																						
Morrowville	3 blk	7-8	6-8	@1385.00																																																																																																																																																																																																																																																																																																																																																																																																																																																																																						
Mayetta	5 blk	3	4	@1325.00																																																																																																																																																																																																																																																																																																																																																																																																																																																																																						
Paxico	2 xbred	2	7-8	@1300.00																																																																																																																																																																																																																																																																																																																																																																																																																																																																																						
Mayetta	4 blk	5	4-6	@1285.00																																																																																																																																																																																																																																																																																																																																																																																																																																																																																						
Mayetta	8 mix	6-8,SS	4-8	@1100.00																																																																																																																																																																																																																																																																																																																																																																																																																																																																																						
Mayetta	5 xbred	3	2-5	@1085.00																																																																																																																																																																																																																																																																																																																																																																																																																																																																																						
Mayetta	3 blk	3	2	@1050.00																																																																																																																																																																																																																																																																																																																																																																																																																																																																																						
Mayetta	7 mix	6-8	4-6	@1025.00																																																																																																																																																																																																																																																																																																																																																																																																																																																																																						
Mayetta	4 bwf	3	3-5	@1025.00																																																																																																																																																																																																																																																																																																																																																																																																																																																																																						
Mayetta	2 blk	SS	8	@1025.00																																																																																																																																																																																																																																																																																																																																																																																																																																																																																						
AGE																																																																																																																																																																																																																																																																																																																																																																																																																																																																																										
Soldier	7 blk 4 @2300.00																																																																																																																																																																																																																																																																																																																																																																																																																																																																																									
Soldier	6 blk 5-6 @2200.00																																																																																																																																																																																																																																																																																																																																																																																																																																																																																									
Alma	2 blk 5-6 @2200.00																																																																																																																																																																																																																																																																																																																																																																																																																																																																																									
Alma	4 blk 5-6 @2125.00																																																																																																																																																																																																																																																																																																																																																																																																																																																																																									
Easton	6 blk 5 @2125.00																																																																																																																																																																																																																																																																																																																																																																																																																																																																																									
Soldier	13 blk 4-6 @2100.00																																																																																																																																																																																																																																																																																																																																																																																																																																																																																									
Dwight	5 blk 3 @2085.00																																																																																																																																																																																																																																																																																																																																																																																																																																																																																									
Oskaloosa	3 blk 3-5 @2050.00																																																																																																																																																																																																																																																																																																																																																																																																																																																																																									
Mayetta	3 blk 3-5 @2000.00																																																																																																																																																																																																																																																																																																																																																																																																																																																																																									
Dwight	8 blk 3-4 @1975.00																																																																																																																																																																																																																																																																																																																																																																																																																																																																																									
Dwight	8 blk 3-4 @1960.00																																																																																																																																																																																																																																																																																																																																																																																																																																																																																									
Alma	7 blk 4-6 @1950.00																																																																																																																																																																																																																																																																																																																																																																																																																																																																																									
Overbrook	5 Rd Ang 5-6 @1950.00																																																																																																																																																																																																																																																																																																																																																																																																																																																																																									
Burns	3 Rd Ang 5 @1950.00																																																																																																																																																																																																																																																																																																																																																																																																																																																																																									
Dwight	12 blk 3-4 @1925.00																																																																																																																																																																																																																																																																																																																																																																																																																																																																																									
Alma	6 blk 4-6 @1925.00																																																																																																																																																																																																																																																																																																																																																																																																																																																																																									
Overbrook	2 Rd Ang 5 @1925.00																																																																																																																																																																																																																																																																																																																																																																																																																																																																																									
Dwight	2 blk 3 @1910.00																																																																																																																																																																																																																																																																																																																																																																																																																																																																																									
Dwight	6 blk 5 @1885.00																																																																																																																																																																																																																																																																																																																																																																																																																																																																																									
Burns	4 Rd Ang 5 @1875.00																																																																																																																																																																																																																																																																																																																																																																																																																																																																																									
Burns	7 Rd Ang 4-5 @1850.00																																																																																																																																																																																																																																																																																																																																																																																																																																																																																									
Burns	7 Rd Ang 3-4 @1835.00																																																																																																																																																																																																																																																																																																																																																																																																																																																																																									
Prairie Village	6 Rd Ang 4-5 @1800.00																																																																																																																																																																																																																																																																																																																																																																																																																																																																																									
Burns	3 Rd Ang 3-6 @1775.00																																																																																																																																																																																																																																																																																																																																																																																																																																																																																									
Oskaloosa	3 xbred 4-5 @1700.00																																																																																																																																																																																																																																																																																																																																																																																																																																																																																									
Dwight	4 blk 6,SS @1575.00																																																																																																																																																																																																																																																																																																																																																																																																																																																																																									
Burns	3 blk 00 @1535.00																																																																																																																																																																																																																																																																																																																																																																																																																																																																																									
Burns	3 blk BM,SS @1425.00																																																																																																																																																																																																																																																																																																																																																																																																																																																																																									
Easton	2 blk BM,SS @1425.00																																																																																																																																																																																																																																																																																																																																																																																																																																																																																									
Mayetta	3 blk 3-5,SS @1325.00																																																																																																																																																																																																																																																																																																																																																																																																																																																																																									
Mayetta	2 blk 5-7 @1175.00																																																																																																																																																																																																																																																																																																																																																																																																																																																																																									

SPECIAL STOCK COW AND BRED HEIFER SALE

WED., NOV. 16 • STARTING 11:00 AM

1ST CALF HEIFER PAIRS

- 8 Blk 1st calf heifers with Angus sired calves by side, cows & calves all worked
- 2 Red Angus 1st calf hfrs with Red Angus calves by side

COW/CALF PAIRS

- 4 Red Cows, 4 to 6 yrs with (3) Red & (1) Char calves by side
- 20 Home raised Angus & SimAngus cows, 7 yrs to older with Angus & SimAngus sired Sept & Oct calves by side
- 8 Blk & Herf Cows, 6 yrs, with 45-90 day Blk baldy calves by side

BRED COWS

- 80 Choice Blk, BWF & Red Angus cows, 3 to 5 yrs, Blk Angus & Blk Simmental bulls turned in May 1 for Feb-March calves
- 15 Home raised SimAngus & Angus cows, SS to BB, bred Registered Angus bulls for March & April calves

Upcoming Special Stock Cow & Bred Heifer Sale Dates • Wednesdays starting at 11:00 AM

2022: November 16; December 14

VISIT US ON THE WEB FOR DAILY CONSIGNMENT UPDATES AT WWW.MCCLIVESTOCK.COM

FIELD REPRESENTATIVES				
<p>JOHN CLINE ONAGA 785-889-4775 Cell: 785-532-8381</p>	<p>BRENT MILLER ALMA 785-765-3467 Cell: 785-587-7824</p>	<p>TOM TAUL MANHATTAN 785-537-0036 Cell: 785-556-1422</p>	<p>BRYCE HECK LINN 785-348-5448 Cell: 785-447-0456</p>	<p>SAM GRIFFIN BURNS 620-726-5877 Cell: 620-382-7502</p>
<p>ALAN HUBBARD OLSBURG 785-468-3552 Cell: 785-410-5011</p>	<p>DAN COATES BALDWIN 785-418-4524</p>	<p>ANDREW SYLVESTER WAMEGO 785-456-4352</p>	<p>LARRY SCHRICK EASTON 913-547-1315</p>	

Kansas Hay Market Report

Compared to the last report, overall, producers, grinders, and pellet mills increased the price of their products the 1st of October citing greater demand and higher input costs. Each week the expectation is that the hay price will plateau and each week we see higher prices. With limited supplies, it is increasingly difficult to find the hay needed to cover their needs and must travel farther from Kansas to find it. As one contributor to the hay report put it, "Planners have covered themselves, while the gamblers haven't made a move yet." According to the U.S. Drought Monitor for October 4th, very poor soil moisture and crop condition resulted in a one-category degradation for southern South Dakota, southwestern Nebraska, parts of Colorado and Kansas. Pond levels are low in Kansas and limited soil moisture is available for winter wheat planting. Currently categorical percentages are: abnormally dry conditions in Kansas (D0) decreased to near 13.5%, moderate drought (D1) remained near 15.5%, severe drought (D2) increased to 16%, extreme drought (D3) remained near 28%, and exceptional drought (D4) increased to near 26%. This leaves only 1.5% of the state's area without abnormally dry or drought conditions.

LIVE & ONLINE LAND AUCTION

MONDAY, OCTOBER 24, 2022 — 7:00 PM

AUCTION LOCATION: Osage City Community Building at 517 1st St., OSAGE CITY, KANSAS

420 AC +/- between Indian Hills & Urish Rds from 269th to 277th

TRACT I: 220 ac +/- with 34.5+/- tillable and balance in pasture, hayable acres and some heavy tree cover and brush. Located south of Osage City Airport 5 miles on S. Indian Hills Rd were it lies on east side from 269th to 277th (Old homestead has been surveyed off with 6 ac and is not included). **Legal:** W1/2 of 18-17-15E fractional 1/4 less 2 tracts. **Est. taxes \$1,050.**

TRACT II: 40 ac +/- has 13+/- ac tillable with balance in heavy trees & brush & 10 acres +/- possibly hayable native grass. Located from S. Indian Hills Rd & 277th east 1/4 mi on north side. **Legal:** East 40 ac of the SW1/4 of 18-17-15. **Est. taxes \$190.**

TRACT III: 80 ac +/- mostly heavy timber & grass located at the NE corner of 269th & Urish Rd and lies 1/4 mi south on west side of Urish. (N2 of NE4 18-17-15). **Est. taxes \$385.**

TRACT IV: 80 ac +/- native grass, trees, pond, draw and evidence of old building foundations and remnants. Tr. IV lies 1/4 mi south of 269th & Urish on west side directly south of Tr. III. (S2 of NE4 18-17-15). **Est. taxes \$385.**

TRACT V: Combination of above tracts (420 ac +/-). Estimated taxes: \$2100

NOTE TO POTENTIAL BIDDERS: Tracts have been used in common and divisional fences maybe poor to non-existent. 2022 crop and pasture rent/program payments will be retained by seller. Rural water meter available should be verified with Os. County RWD #7 at 785-528-5090. **PROPERTY INSPECTION:** Perimeter inspection by road anytime. Drive in inspection by appointment only.

INFORMATION & ONLINE BIDDING:
www.Superiorlandgroup.hibid.com

GREEN FAMILY TRUST, SELLERS

WISCHROPP AUCTIONS

Wayne Wischropp, Realtor/Auctioneer * Michele Loeffler, Realtor



SUPERIOR REAL ESTATE & LAND GROUP
BRANDY CRISS-ENGLER, Broker
www.wischroppauctions.com * 785-828-4212

BLACKBURN FAMILY PERSONAL PROPERTY ONLINE AUCTION - (Raymond, KS)

Blackburn family had a house fire and have moved to assisted living. They do not have room in new location for their lifetime collection of collectibles, so they have chosen the Online Auction Method to sell ALL items (300+lots) that have been professionally cleaned.

Personal & Collectible property includes: CI banks, Dolls, Antique ornate oak hall tree with seat, parlor tables, Bennington spongeware, unique shaving stand and much more.

ONLINE BIDDING OPENS: Thursday, October 20, 8:00 a.m.
with SOFT CLOSE Wednesday, October 26, 8 p.m. &

PU will be only by appt. Friday, Oct. 28, 1-7 p.m. @ Homemart Building-Lyons, KS.
Shipping available on items so marked on the auction site * View by appt. only. Call Jim 620-257-8148



View, Register & BID at:
<https://hollingerauction.hibid.com/auctions/current>

HOLLINGER ONLINE AUCTION, Lyons, KS * 620-257-8148

"Grass and Grain caters to the market that I sell to."

ROSSVILLE TRUCK AND TRACTOR

has advertised with Grass & Grain over the years because the pricing is good, and the readership in their area is very strong.

"I am told often [by customers] that they saw it in Grass & Grain."

You could also be reaping the benefits of Grass & Grain Advertising!

Don't hesitate, call today: 785-539-7558

Or stop by to talk to one of our advertising representatives



**1531 Yuma St.
Manhattan, KS
66502**

Southwest Kansas

Dairy alfalfa, ground and delivered steady, grinding alfalfa steady to 5.00 higher, movement slow to moderate. Alfalfa: horse, supreme small squares new crop 10.00-12.00/bale. Dairy 1.30-1.40/point RFV, Supreme(185rfv-200rfv) 240.00-280.00, Premium(175rfv-185rfv)230.00-260.00, Good (150rfv -170rfv)195.00-240.00. Good, Stock or Dry Cow 290.00-300.00. Grinding alfalfa, large rounds, 285.00-300.00, large square 3x4's and 4x4's 285.00-300.00. Ground and delivered locally to feed lots and dairies 300.00-325.00; Grass Hay: Bluestem, large rounds 170.00-180.00 delivered. Sudan large rounds 145.00-155.00, large square 3x4's 145.00-155.00. Teff large rounds 155.00-165.00. The week of 10/02-10/08,5,615T of grinding alfalfa and 150T of dairy alfalfa was reported bought or sold.

South Central Kansas

Dairy alfalfa, grinding alfalfa 5.00-10.00 higher, ground and delivered steady to 30.00 higher, alfalfa pellets 15.00-25.00 higher, movement moderate. Alfalfa: horse, small squares 255.00-275.00. Dairy 1.30-1.40/point RFV, Supreme (185rfv -200rfv) 240.00-280.00, Premium (175rfv -185rfv) 230.00-260.00, Good (150rfv -170rfv) 195.00-240.00. Good, Stock cow, 270.00-280.00. Fair/good grinding alfalfa, large rounds 250.00-260.00 delivered, 3x4 and 4x4's 255.00-265.00 delivered. Ground and delivered 280.00-295.00. Alfalfa/Soybean: ground and delivered 240.00-295.00. Alfalfa pellets: Sun cured 15 pct protein 265.00-300.00, 17 pct protein 290.00-315.00, Dehydrated 17 pct 310.00-315.00. Grass Hay: Bluestem, small squares 160.00-165.00, large squares 3x4's 135.00-145.00, large rounds 100.00-115.00. Brome: small squares, 9.00/bale, 3x4's 145.00-155.00, large rounds 135.00-140.00, mid square 3x3's 175.00-185.00. Sudan: large rounds 160.00-170.00. Soybean stalks, large rounds 145.00-155.00. Soybean large round 150.00-200.00. Wheat straw: 115.00-125.00. The week of 10/02-10/08, 8,143T of grinding alfalfa and 950T of dairy alfalfa was reported bought or sold.

Southeast Kansas

Dairy alfalfa, grinding alfalfa steady, bluestem grass hay steady, movement slow. Alfalfa: horse or goat, 260.00-270.00. Dairy 1.30-1.40/point RFV. Good, stock cow 220-230.00. Fair grinding alfalfa, none reported; Grass hay: Bluestem, small squares 140.00-165.00, mid square 3x3's 130.00-150.00, good 3x4 squares 145.00-160.00, large round

Rail labor negotiations threaten to disrupt ag supply chains for 2022 harvest

Rail labor negotiations hit a speed bump recently when it was announced the Brotherhood of Maintenance of Way Employees Division (BMWED), a division of the International Brotherhood of Teamsters and the third-largest union representing rail workers, has rejected the Sept. 15 tentative labor agreement reached among the National Carriers' Conference Committee (NCCC) and representing the Class

I railroads and 12 rail worker labor unions.

After reaching the tentative labor agreement, each union is now required to have its membership ratify the deal. The ratification timeline for each union is different, with votes occurring from late Sept. to mid-Nov. During the BMWED ratification vote, 56% of the membership opposed ratification. As per the previous tentative labor agree-

120.00-130.00, Brome, large rounds 140.00-150.00, 3x4 and 4x4 squares 150.00-175.00. Wheat straw, large rounds, old contracts 60.00-70.00. The week of 10/02-10/08, 1,229T of grass hay was reported bought or sold.

Northwest Kansas

Dairy alfalfa steady, grinding alfalfa steady, movement slow. Alfalfa: Horse or goat, small squares 300.00-400.00 delivered, 3x4 squares 250.00-260.00. Dairy, Premium/Supreme 1.30-1.40/point RFV. Stock cow, fair/good 240.00-280.00. Fair/good grinding alfalfa, 230.00-240.00.

North Central-Northeast Kansas

Dairy alfalfa steady, ground/delivered, and bluestem grass hay steady, grinding alfalfa mostly steady, movement slow. Alfalfa: horse, premium small squares, 11.50-12.50/bale. Dairy 1.30-1.40/point RFV, Supreme (185rfv -200rfv) 240.00-280.00, Premium (175rfv -185rfv) 230.00-260.00, Good (150rfv -170rfv) 195.00-240.00. Horse hay, 3x4's 290.00-300.00; Stock Cow 3x4's 205.00-235.00. Fair/good, grinding alfalfa, large rounds 220.00-230.00, large square 3x4's 245.00-255.00; Alfalfa ground and delivered 240.00-300.00; Alfalfa mix ground and delivered 270.00-275.00. Grass hay: Bluestem, small squares 7.50-8.50/bale, large 3x4 squares 160.00-170.00, good large rounds 140.00-155.00. Brome: small squares 8.50-9.50/bale, large rounds 155.00-165.00. Sudan: large rounds 140.00. Soybean large rounds 195.00-205.00. Wheat straw: small squares 6.00/bale, large rounds 95.00-105.00, large squares 110.00-120.00. Corn stalks: large rounds 95.00-105.00. The week of 10/02-10/08,1,460T of grinding alfalfa and 175T of dairy alfalfa was reported bought or sold.

Prices above reflect the average price. There could be prices higher and lower than those published.

***Prices are dollars per ton and FOB unless otherwise noted. Dairy alfalfa prices are for mid and large squares unless otherwise noted. Prices are from the most recent sales.

*CWF Certified Weed Free

*RFV calculated using the Wis/Minn formula.

**TDN calculated using the Western formula. Quantitative factors are approximate, and many factors can affect feeding value. Values based on 100% dry matter (TDN showing both 100% & 90%). Guidelines are to be used with visual appearance and intent of sale (usage).

ment terms, both parties must maintain status quo for now—meaning BMWED workers will not strike nor will the railroads lock them out before a period of continued negotiation. BMWED will go back to the bargaining table with the NCCC until mid-Nov. in an attempt to reach a new agreement.

If even one union does not reach a labor agreement, it is possible that all 12 unions will strike in

solidarity. To date, four of the 11 other railroad worker unions have voted in favor of ratification, albeit with narrow vote margins. Seven unions are yet to vote. If a deal is not ratified by all 12 unions, per the tentative agreement reached in Sept., Congress will be provided a window to act and prevent a potential stoppage.

Ag Supply Chain Disruptions Looming

This rail development comes as a great concern to the U.S. soy industry and agricultural supply chain. As realized last month, neither the trucking nor barge industry has the capacity to backfill the level of demand that would be needed if a rail stoppage occurs. The rail stoppage threat last month led to barge freight rates for grain reaching seasonal highs compared to previous years. Now, ongoing drought has resulted in barges coming to a halt on the lower Mississippi River. The barge and towing industry continue to institute a 25-barge maximum tow size south of St. Louis. Under normal conditions, a single tow in this region can include 30-40 barges. Since Sept. 1, 40% fewer barges have been unloaded in New Orleans. While the U.S. Army Corps of Engineers is working to mitigate some of the current barge logjam via emergency dredging, the region will need significant rainfall to reach anywhere near normal levels of service.

Low water levels are causing rates to skyrocket for both barge and rail. This, paired with rail service uncertainty, could be catastrophic. The 2022 harvest is in full effect, and growers remain dependent on a reliable transportation system to get their soybeans and other crops from field to market. According to Mike Steenhoek, executive director of the Soy Transportation Council, 80% of soybean exports occur between the months of Sept. and Feb.

On the rail side of the supply chain, as unions work through the ratification process, ASA continues to share data related to U.S. soy's reliance on rail service with interested parties in Congress and the administration. Additionally, ASA remains in communication with coalitions and other agricultural commodity groups focusing on this issue to coordinate on next steps should congressional action be needed.

AUCTION Reminder

SATURDAY, OCTOBER 22, 2022 — 10:00 AM

LOCATION: 304 South 4th St, BEATRICE, NEBRASKA

AIR COMPRESSORS & POWER TOOLS & MANY TOOLS HAND TOOLS, AUTOMOTIVE WINCH, JACKS, LADDERS, Lots of New MISCELLANEOUS items

COMPUTERS * TV * SUPPLIES inc.: Paint Brushes, Doorknobs, Hinges & Hardware, Outlet Covers, Gloves, Shoes inc. Nike, Men's Clothing & MORE!

See Last Week's Grass & Grain for Listings & Log on to: www.beatrice77.net (Click on "The Auctioneers") (FOR AUCTION LISTING w/PICTURES)

VERNON McALISTER

Clerks: TON - SOL Clerking, Ph: 402-239-8741

Vern has an unbelievable inventory of new and used construction tools and materials. BRING A FRIEND TO THE 2-RING AUCTION! ** LUNCH AND RESTROOMS ON THE GROUNDS **

THE AUCTIONEERS * Beatrice, Nebraska

Rick Jurgens Dennis Henrichs Gale Hardin Ryan Sommerhalder
402-520-0350 402-239-8741 402-520-2911 402-335-7937

THE AUCTIONEERS FOR COMPLETE AUCTION SERVICE!

TRACTORS, TRUCKS, LAWN CARE ITEMS, VEHICLES AUCTION

SATURDAY, OCTOBER 29, 2022 * 10:30 AM

LOCATION: 712 N. 3rd St., LEOTI, KS (North side of Leoti)

"C&L Services are quitting business and are selling their Excellent Equipment at public auction."

This will be a LIVE auction or you can Bid on the internet at equipmentfacts.com

TRACTORS: 2010 JD 3520 tractor, mfw, hydrostat, 3,196 hrs., 3 pt. front & rear, quick hitch, front weights, in cab spray control, Ser. #H512562; 2007 JD 3520 tractor, mfw, hydrostat, joy stick, 3,222 hrs., 3 pt. front & rear, quick hitch w/JD CX300 loader, bracket for belly mount mower, in cab spray control, Ser. #H358846; 2007 JD 3520 tractor, mfw, hydrostat, 4326 hrs., 3 pt. front & back, quick hitch, front weights, in cab spray control, Ser. #358844.

TRUCKS, YUKON, PICK-UP, MOTORCYCLE: 1996 IHC 4700 truck, DT466 motor, auto., crew cab, 100,983 mi. w/hydraulic dirt dump box, 10 ft.; 2006 Peterbilt 386 semi-truck, C13 cat motor, 10 spd trans., 752,255 mi. w/ACP unit; 1998 Dodge Ram 3500 pickup, ext. cab, Cummins 24 valve turbo engine, 5spd. trans., dully, 299,441 mi.; 2011 GMC Yukon SLT, auto., 123,713 mi., new Michelins tires (nice); 1978 Kawasaki 650KZ motorcycle, 17,748 mi., good shape.

TRAILERS: Load Trail hydraulic tilt bed car trailer, 18 ft, 20,000 lb.; 2012 Texas Pride 40 ft. w/5ft. dove tail trailer, goose-neck or 5th wheel; Out Back by Pace 14 ft. cargo trailer w/barn doors; Load Trail single axle, hydraulic dump trailer, 8 ft.

EQUIPMENT: Wylie high pressure pickup spray unit, 200 gal., 5 hp Honda motor & pump; electric hose reel; (3) 3 pt. spray

units, 60 gal. tanks, hydraulic pump, 17 ft. booms, 200 ft. hose reel, pressure adjust, dye marker; JD loader forks; 2007 mower deck, 72", pto, 7-iron; Frontier OS1058 grass seeder, 58" x 10" spacings, like new; JD weight box, 3 pt.; Frontier DT1136 trencher, pto, 36" depth, 3 pt.; (3) 3pt. rear blades, 5 & 6 ft., hydraulic tilt; JD rototiller, 3 pt., pto, 48", #550E; (3) JD front dozer blades, 3 pt., hydraulic tilt, 7 ft.; King Kutter 5 ft., rotary mower, 3 pt.; King Kutter 5 ft. rototiller, 3 pt.; King Kutter 5 ft. box blade, 3 pt.; Taylor 3 pt. backhoe, Model 230, hydraulic, 6 ft. depth; Ditch Witch 400sx plow, diesel motor; Ditch Witch 1010 trencher, 13 hp Honda motor, 30" depth; Farm Star 3pt. post hole digger; Classen 18" sod cutter w/5 hp Honda motor; Ditch Witch 100sx plow, walk behind; Cement mixer, 1/2 yard, 3 pt., hydraulic driven; TurfCo 3 pt. seeder, pto, 60"; Lovel Sprayer, pickup unit, 200 gal., electric hose reel, 5hp Honda motor; Tygar Sabertooth sod cutter, walk behind w/Tygar curbing machine, various molds; Tris self-propelled lawn fertilizer spreader, stand on.

OTHER ITEMS: (3) pallet dollies; 12-ton electric winch; 110 gal. pickup fuel tank w/12-volt pump; Reel Kraft hose reel; 10-ton porta power; Pittsburgh transmission jack; Century welder; motor stand; Tractor splitting jacks; Forge & tongs; other items.

Check us out on Facebook & at www.berningauction.com

C&L CUSTOM SERVICES, INC., OWNER
Charles (620) 874-1533

TERMS: VALID ID required to register. NO EXCEPTIONS! Cash or approved check day of sale. Everything sold as is. No warranties expressed or implied. Not responsible for theft or accident. Announcements day of auction take precedence.

NOTICE: Due to Covid-19, you are responsible for your own SAFETY and HEALTH. The auction company nor the seller will be held responsible. Social guidelines are in place, so please be respectful. We know auctions are a hard place to social distance, so we will have masks and hand sanitizer available. Enjoy the auction!

BERNING AUCTION, INC.
812 West M, Leoti, KS 67861, 620-375-4130

Stocking the animal health toolbox with wide range of tools

By Lisa Moser, K-State Research and Extension news service

Any good carpenter has a wide range of tools in the toolbox to get the job done, and in much the same way, cattle producers have a vast set of options to keep disease from coming onto the farm, said the experts at the Kansas State University Beef Cattle Institute on a recent Cattle Chat podcast.

"One of the things that beef producers have in their toolbox is sanitation," said K-State veter-

inarian Bob Larson. One of the examples he shared was washing feed trucks and other vehicles that come in contact with other herds to keep them from being a vector of disease transmission.

Another tool Larson cited is diagnostic testing.

"Diagnostic testing works best when trying to prevent a disease in which the carrier animals are rare," he said. "With accurate testing prior to arrival, producers are able to keep diseased animals off the farm."

A third tool he mentioned is keeping the cattle in good health.

"This includes following vaccination protocols that will protect them from diseases as well as providing them with quality nutrition," Larson said.

Veterinarian Brad White offered a fourth tool — prioritizing disease prevention.

"There are costs associated with each of these prevention strategies, so producers need to prioritize the diseases that bring the greatest risk to

the overall health of the herd," White said.

As producers make their biosecurity plan in partnership with their veterinarian, K-State veterinarian Brian Lubbers said it is important to know the risk tolerance for the operation.

"If you have a high-value herd, isolation and testing will be important when bringing new cattle into the operation," he said.

When a disease situation arises on the ranch, the veterinarians agree that rapid communication

is going to be key in mitigating the situation.

"If you think you are dealing with a disease outbreak, you've got to make that phone call to your local veterinarian," Lubbers said. "I know it is a hard phone call to make, but it is a critical step in stopping disease spread."

From that phone call, the local veterinarian will investigate the situation and reach out to the state veterinarian, he added.

"There is a network of veterinarians trained specifically to spot high-con-

sequence diseases and they will be on your farm literally within hours," Lubbers said.

While that is the worst-case scenario, Larson stressed that using the tools in the prevention toolbox will reduce the chance of these situations arising.

"The healthier you can have the environment and the cattle, the more resistant and resilient the cattle will be when faced with disease exposure," he said.

Highly pathogenic avian influenza (HPAI) returns to Kansas

Fall has brought a resurgence of highly pathogenic avian influenza (HPAI) nationwide, and recently the Kansas Department of Agriculture identified HPAI in two Kansas counties: Johnson County and Neosho County.

Both new HPAI locations are in non-commercial mixed species flocks, and KDA is working closely with USDA-APHIS on a joint incident response. KDA officials quarantined the affected premises, and birds on both properties will be depopulated to prevent the spread of the disease.

Anyone involved with poultry production from the small backyard chicken owner to the large commercial producer should review their biosecurity activities to assure the health of their birds. Find guidance on biosecurity on the KDA Division of Animal Health webpage at agriculture.ks.gov/Avian-Influenza. Going forward, any additional confirmed cases will be shared directly with local communities and announced on the KDA Avian Influenza webpage, rather than through a statewide news release.

Highly pathogenic avian influenza is a highly contagious viral disease that can infect chickens, turkeys and other birds and can cause severe illness and/or sudden death in infected birds. This outbreak has seen illness and mortality in a wider scope of bird species than past outbreaks, including wild and domestic waterfowl. Attentively monitor your birds for symptoms of HPAI which include: coughing, sneezing, nasal discharge, and other signs of respiratory distress; lack of energy and appetite; decreased water consumption; decreased egg production and/or soft-shelled, misshapen eggs; incoordination; and diarrhea. Avian influenza can also cause sudden death in birds even if they aren't showing other symptoms.

If these symptoms are observed in your birds, immediately contact your veterinarian. If you don't have a regular veterinarian, contact KDA's Division of Animal Health office toll-free at 833-765-2006.

According to the U.S. Centers for Disease Control and Prevention, the recent HPAI detections do not present an immediate public health con-

cern. Birds and eggs from the infected flock will not enter the food system. As a reminder, the proper handling and cooking of all poultry and eggs to an internal temperature of 165 °F is recommended as a general food safety pre-

caution.

As part of existing avian influenza response plans, federal and state partners are working jointly on additional surveillance and testing in areas around the affected flocks. The United States has the stron-

gest avian influenza surveillance program in the world, and USDA is working with its partners to actively look for the disease in commercial poultry operations and live bird mar-

kets and in migratory wild bird populations.

For more information about HPAI, including current status of the confirmed cases in other states as well as more

information about biosecurity for your flock, go to KDA's avian influenza webpage at agriculture.ks.gov/AvianInfluenza or call KDA at 833-765-2006.

Veterinary Clinic, Symbioun Inc. Bella Carmona, DVM

Large Animal Mobile Veterinary Services
1201 N. Van Buren
Abilene, KS 67410

Regular Business Hours: 785-263-3221 ext. 4
After Hours / Emergency: 908-399-1965

Email: dr.bella.symbioun@gmail.com
Website: www.symvet.com

LAND AUCTION

156.87+/- Acres of Cropland, Hay, Rec. in Lyon County
THURSDAY, NOVEMBER 3, 2022 - 6:00 PM

AUCTION LOCATION: The Americus Community Center,
516 Locust St, AMERICUS, KS 66835

SELLER: THE LINDA DIX REVOCABLE TRUST

We are honored to represent the Dix Family in the sale of this multi-use quarter in North Lyon Co. Located 4.5 miles north and 3 miles west of Americus, this tract offers a lot of opportunities with cropland, hay and lots of wildlife! The cropland offers a good food source, and the expired CRP filler strips and a couple of draws with tributaries to Wrights Creek offer good cover resulting in an abundance of wildlife, from whitetail bucks to turkey to quail. You will also appreciate that the property won a conservation easement about 10 years ago, there are terraces and waterways in place. The county show 156.87 total acres (44.94 acres of grass, 111.93 dryland acres). The dryland acres are currently planted in beans or are in expired CRP. There is also the potential to build with only 3 miles of gravel and rural water running along the property. BRIEF LEGAL: SE/4 in S08-T17S-R10E.

For full listing, terms & photos GriffinRealEstateAuction.com

GRIFFIN
Real Estate & Auction
Phone: 620-273-6421 Fax: 620-273-6425
305 Broadway, Cottonwood Falls, KS 66845
griffinrealestateauction@gmail.com
In Office: Heidi Maggard, Linda Campbell

CHUCK MAGGARD
Sales/Auctioneer
Cell: 620-794-8824

HEIDI MAGGARD
Broker
Cell: 620-794-8813

3rd Annual Production Sale

Saturday, October 22, 2022

1:00 PM Available on LiveAuctionsTV

Parsons Livestock Market, Parsons, KS

40+ Yearling Bulls
10 Registered Females
15 Commercial Females
Developed in fescue grass pastures



Coal Valley Angus

★ Viewing of animals available until noon ★



Jackie 620-249-0100
Jace 620-249-1514

Cherokee, KS 620-249-0100
www.coalvalleyangus.com

WORKING FOR TODAY'S AND TOMORROW'S CATTLEMEN

HVAC BUSINESS LIQUIDATION AUCTION

SATURDAY, OCTOBER 29, 2022 — 10:00 AM

LOCATION: 24690 US 75 HWY, HOLTON, KANSAS
Directions: From Holton, 2 Miles North On US 75 Hwy

**Rick Arnold has discontinued his business and will sell the following items.

8ft Sheet metal brake 22 gauge capacity; 3ft sheet metal brake Central Machinery; Lock Former Tin knocker mod-24; 2 wheel trailer size; 2 refrigerant cylinder racks (holds 3 cylinders); Bench top drill press; Puma air compressor 5 hp 20 gal. portable upright; Pacific Energy Gas fireplace NEW; St Croix pellet stove, floor model needs work; electric fireplaces wall mount; hearth pads; Napoleon gas grill stainless steel; Napoleon Grill accessories; 2 Kamado Ceramic charcoal grills; Prime Design Ergo ladder rack; several wood Mantels; Pallet of lump Charcoal; Two door True Commercial cooler, works good; 2016 Door Kegerator works; 2016 Weaver W-894XS Semi-Automatic Tire Changer, Like New; 2016 Weaver W-937 Computer Wheel Balancer, Like New; Tire spreader; HVAC Fan motors new; HVAC Capacitors new; HVAC Contactors new; HVAC filter driers new; HVAC Refrigerant controls new; HVAC control boards; HVAC Fan blades; HVAC electrical supplies; HVAC air filters new; HVAC copper line sets NEW; Copper pipe; PVC pipe; Black iron fittings; PVC Fittings; Plumbing supplies; Pipe insulation; Used R-22 AC units; AC pads; Used refrigeration units; Sheet metal duct and supplies; Sheet metal duct fittings; Flex duct; Escalera Dolly lift (needs battery); Pallet Racking and cross members; Class A Chimney pipe (wood or oil chimney); Pellet vent pipe; 5x8 direct vent pipe; 6x4 direct vent pipe; 6" single wall chimney pipe; 6" double wall pipe; Pellet stove parts; Regency stove parts; SBI stove parts; Literature racks; Cherry wood literature / magazine cabinet; Shelving units; Parts cleaner; Several rolls of bailing twine; 2 Apion G5 Twin Reclaimers; Reftech Reclaimer; Reclaim bottles; 3- Small portable torch sets; Plasma cutter; Honda generator; Bosch hammer drill; Rigid power hand pipe threader; Rigid tri pod pipe vise; 3 Vacuum pumps; Pancake air compressor; Portable turbo heater; Duct board cutting tool set; Milwaukee electric porta band; Milwaukee electric right angle drill; Milwaukee electric Sawzall; Milwaukee electric Hammer drill; Miter saw; Supco ECM tester; Nitrogen bottles; Oxygen bottles; Acetylene bottles; Reftech Copper tube bender; Yellow Jacket Copper tube bender; Hand grinders; Heat guns; Shop vacs; Engine stand; Ski Tube.

lots of HVAC tools, PVC, PIPE FITTINGS & MISC. ITEMS related to the trade - too numerous to list, amongst other items associated with the HVAC and refrigeration trade.
MANY, MANY PARTS & PIECES NOT LISTED.

ARNOLD'S REFRIGERATION, SELLER

Rick Arnold - Cell: 785-799-5330

INSPECTION OF ITEMS WILL BE FRIDAY & SATURDAY ONLY. All Items Sold As Is, Where Is, With Buyer Relying Upon Their Own Inspection. All Items Must Be Paid For Before Removal. All Items To Be Removed Within 7 Days. Food Will Be Served By Brandee. To View Pictures, Please Visit:

Holtonlivestock.com

Auction Conducted by: HARRIS REAL ESTATE & AUCTIONS, LLC, HOLTON, KS
Dan Harris, Auctioneer 785-364-7137 • Cody Askren, Auctioneer 785-364-7249
Holton Livestock Exchange, Inc. 785-364-4114

UPCOMING SPECIAL ISSUES

G&G Farm & Ranch Show - November 1st

Soil Health - November 8th

Wichita Farm Show - November 29th

Christmas Greetings Special - Dec. 20th

DEADLINES:

G&G Farm & Ranch Show - Oct. 26th, before Noon

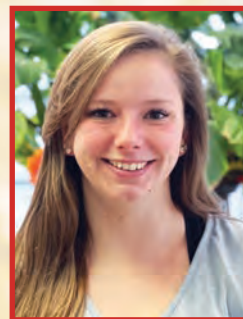
Soil Health - November 2nd, before Noon

Wichita Farm Show - November 23rd, before Noon

Christmas Greetings - Dec. 14th, before Noon

2023 Special Editions to be announced!

To advertise in these or future special issues, contact your GRASS & GRAIN sales rep:



Josie Bulk

— Sales Representative —
josie@agpress.com
Office: 785-539-7558



Donna Sullivan

— Managing Editor —
gandeditor@agpress.com
Office: 785-539-7558

GRASS & GRAIN DIRECTORY

D. ROCHE FENCING INC.
 QUALITY BUILT FENCES
 DON ROCHE
 785-292-4271
 FRANKFORT, KS

HALDEMAN WELL DRILLING & PUMP SERVICE
 785-539-9295
 MANHATTAN, KS

Blue Valley Drilling, Inc.
 Water Well Drilling & Service
 Family Business Over 70 Years!
 CONTACT ERIC STRADER
 785-363-7353

Custom Manure Hauling & Spreading
Big to Small Jobs!
Chore-Boyz Services
 913-636-1099

AUCTIONEERS

YOUR REAL ESTATE AUCTION TEAM!
 Crossroads Real Estate & Auction LLC
 TERRI HOLLENBECK, Broker
 ANDREW SYLVESTER, Auctioneer
 BILL DISBERGER, Coordinator
 JESSICA HOLLENBECK, Office Mgr.
 www.kscrossroads.com
 785.539.2732

GAVEL & ROADS
 THE PLACE TO GO TO BUY & SELL EQUIPMENT IN THE MARKETPLACE.
 Contact Sales Rep, KURTIS GEISLER, at 785.293.2221
 www.gavelroads.com
READY... SET... SOLD!

ARMSBID.COM
 Kull's Old Town Station invites consignments for our Spring, Summer & Fall Auctions. If you have 1 or 1,000, we'd like to talk to you.
 We will also buy collections or individual guns.
 Dan@ArmsBid.com or 785-862-8800 • 800-466-5516
 Topeka, Kansas

GENE FRANCIS & ASSOCIATES
 REAL ESTATE BROKERS & AUCTIONEERS
 Serving all 105 Kansas counties with more than 35 years of experience.
 Give us a call at 785.556.7162!
 www.genefrancis.com
A BID ABOVE THE REST!

BUY & SELL
 Farm & Construction Equipment
 Vehicles and MORE!

 1.866.608.9283
 purplewave.com

Pearl Real Estate & Appraisal Svcs., Inc.

MIKE PEARL
 Ag Land Sales & Appraisals
 • Auctions
 • Farm Real Estate Sales & Appraisals
 602 W. Bertrand, St. Marys, KS 66536
 Office: 785.437.6007
 Cell: 785.256.5174
 www.pearlrealestate.org
 pearlre602@gmail.com

KansasAuctions.Net

 Providing you with a single location to get details about local auctions - go prepared!
 www.kansasauctions.net/grass

JEFF RUCKERT, OWNER/BROKER/AUCTIONEER
 2049 Ft. Riley Lane
 Manhattan, KS
 785-565-8293
 www.ruckertauctions.com
RUCKERT REALTY & AUCTION
 Homes, Farms, Ranches, Land, Auctions & Recreational Property

REAL ESTATE

MARION COUNTY
 140 +/- Acres. Gently rolling, some trees, pasture, and tillable. Rural water line along West boundary. 45 miles North of Wichita. Across from the 9-hole Pine Edge golf course. Wonderful place in the country! \$4,500/acre.
Call Dolly Anderson, Owner/Broker
G&A Real Estate, INC.
 785-532-8801
 Manhattan, Kansas
 dolly@gandarealestate.com

AUTOMOTIVE

1998 Freightliner with 620-16 Rotomix
 Several Daycabs available
 Feed Mixers and Manure Spreaders
 Kuhn Knight, new & used

 Belleville, KS
 800-536-2293

MIDWAY MOTORS SUPERCENTER
 McPherson, KS
 Hutchinson, Kansas • Hillsboro, Kansas
 Newton, Kansas
 2021 Ford F250 Crew 4x4 XLT, diesel, leather, like new, 20k mi.
 2021 Chevy Silverado 2500 HD custom, crew, 4x4, 6.6 gas, only 10k mi.
 2020 Chevy Silverado 2500 HD High Country, crew, 4x4, 6.6 diesel, loaded, 44k mi.
 2016 GMC Sierra 2500 HD Denali, crew, 4x4, 6.6 diesel, loaded, nice, 73k mi.
 2017 Ram Laramie, 3500, DRW, crew, 4x4, diesel, loaded, only 59k mi.
 2020 GMC Sierra 2500 HD Denali, crew, 4x4, 6.6 gas, loaded, 41k mi.
Ask for Kris Hanschu
 krishanschu@midwaymotors.com
 620-755-2824

FARM & RANCH

Land For Sale
Rice Co.- 1310 12th Rd. - Commercial/ Agriculture property, office space, living quarters, truck scale, 35 acres. Call Chris, 785-493-2476
Saline Co.- 150.6 acre m/l with 109 acres crop land, 35 acres native grass and the balance waterways located Northwest of Glendale. Call Chris, 785-493-2476.
Farm & Ranch Division Of:

 631 E. Crawford St.
 Salina, KS 67401
 785-827-3641
 cbsalina.com

TRAILERS

CIRCLE D
 LIVESTOCK & HORSE TRAILERS
 FLATBED TRAILERS
 • 1-800-526-0939 •
 www.circle-dtrailers.com

Trailers 4 U
 785-292-4166
 Frankfort, KS

 www.trailers4u.com

DONAHUE
 When There's Work To Do...

DONAHUE!
 1-800-457-7406
 www.donahuetrailers.com

Blue Valley Trailers
 Waterville, Kansas

HILLSBORO Industries

HUSTLER
 Hayliner - Bale Buzzer
 • New Trailers
 • Used Trailers
 • Trailer Repair
 See used at bluevalleytrailers.com
785-363-2224

BOB'S TRAILER SALES
 Pomona, Kansas
785-418-2227
 www.bobstrailersales.com
 Circle-D, Elite, Travalong, Bulldog, Titan
B&W Hitches
 USED
 • 1995 Aluminum Featherlite 20', super clean, always shedded, new 14 ply tires,\$13,500
 NEW
 • 2023 16' bumper stock\$8,400
 • 2022 25' Tandem Dual Elite flatbed\$14,800
 • 2022 30' Tandem Dual Elite flatbed\$15,500
 • 2022 32' Tandem Dual Elite flatbed\$15,800
 • 2022 Bulldog 18+2, (2) 7k axles, stand up ramps\$5,950
 • 2022 10+2 x 6'6" 3500k single axle\$1,950
Truck beds starting at \$1,600. Call Shane: 620-243-4023
We handle Butler Bale beds
All Elite flatbed trailers low profile and torque tube, dual jacks and toolbox.

Bob's Trailer Sales
 Pomona, Kansas
785-418-2227
 www.bobstrailersales.com
 Circle-D, Elite, Travalong, Bulldog, Titan

USED
 • 1995 Aluminum Featherlite 20', super clean, always shedded, new 14 ply tires,\$13,500
NEW
 • 2023 16' bumper stock\$8,400
 • 2022 25' Tandem Dual Elite flatbed\$14,800
 • 2022 30' Tandem Dual Elite flatbed\$15,500
 • 2022 32' Tandem Dual Elite flatbed\$15,800
 • 2022 Bulldog 18+2, (2) 7k axles, stand up ramps\$5,950
 • 2022 10+2 x 6'6" 3500k single axle\$1,950
Truck beds starting at \$1,600. Call Shane: 620-243-4023
We handle Butler Bale beds
All Elite flatbed trailers low profile and torque tube, dual jacks and toolbox.

MACHINERY

Guaranteed Used Truck
 Tires, most sizes.
 GeeTire.com
 Rossville, KS.
 785-231-8397

CENTURY HINIKER sprayer
 HD1000 Model Hyd-0136-102, 1000 gal. tank, 13.6-38 tires, \$6500. Great Plains drill, solid stand, 13 7.5" disc spacing w. dry fertilizer box, \$8500. 785-488-6761.

MIKE'S EQUIPMENT
1-620-543-2535
 BUHLER, KANSAS
 Salvaging Tractors, Combines, Round Balers & Swathers

PLANTER SALVAGE
 IH 800-900-950-955 Cyclo JD 494-1280, 7000-7300, plate and plateless White 5100
Koelzer Repair
 Onaga, KS 785-857-3257

SALVAGING COMBINES
 N5, N7, L, L2, M, F, G, C, CII, All, A&E, K Gleaner. 6620, 7720, 8820, 7700, 6600, 4400, 3300, 105, 95, 55, JD, 915, 1480, 1460, 1420, 815 IHC. 860, 760, 750, 510, 410, 300 Massey. Several black & orange Gleaner corn heads.
Jack Boyle
 Vermillion
 785-382-6849 785-564-0511
 785-294-2236

MACHINERY

FOR RENT OR SALE: JD 6
 row corn heads. IH adapter available. 785-456-5093.

FOR SALE: 1957 John Deere
 gas 520 tractor, restored. Call evenings, 785-392-2950.

FOR SALE: 1970 John Deere
 gas 3020 tractor. Call evenings, 785-392-2950.

FOR SALE: CASE 2208
 corn head. Very good condition. 785-282-5465.

FOR SALE: GOOD 643 JD
 corn head, plastic. \$4,500. Jack Boyle, Vermillion. 785-564-0511, 785-294-2236.

SKID LOADER MOUNTED
 bale processor, will handle 5x6 bales. 785-770-7969

2011 CASE MACDON 40'
 flex header. Excellent shape. 785-466-1729 or 785-466-6944

2020 DALTON 16 ROW
 anhydrous machine. Raven cooler and rate controller. \$68,000. 785-799-4467.

GEHL GRINDER MIXER, 95
 bushel, with extension auger. Eskridge, 785-246-5665. \$2,700.

IHC 510 GRAIN DRILL
 with dry fertilizer or will part out. 620-586-8009.

JD 8200 18 HOLE DRILL
 good condition, \$2,000. 3pt. 10' AC chisel, 3 beam, heavy duty, \$350. 785-409-5051.

JD 9650 STS COMBINE
 for sale. Contour Master. All updates. Annual service. 2600 separator hrs. 620-755-1959.

JD PTO AIR PUMP
 from 2 cyl. era. Also JD grain moisture tester. \$150 each. 402-741-2799.

USED TIRES:
 24.5x32, 30.5x32, 28Lx26, 23.1x26, 14.9x26, 16.9x26, 20.8x38, 18.4x38, 18.4x42.
Call Jack Boyle,
 785-564-0511, 785-294-2236

FOR SALE: TITAN
 gooseneck 28' tandem dual 5' dove-tail. 1300 gal. gooseneck nurse trailer. 6' blade for 4 wheeler. 14' hydraulic auger for gravity box, hydraulic wire winder, tree cutter for 4 wheeler. 785-263-6208.

Tire Town Inc.
 24.5-32 R3 New Buff ...\$1,400
 650/85R38 New Buff ...\$2,100
 480/80R42 New\$1,200
 20.8-38 R2 New Buff ...\$1,100
 14.9-24 R4 New Buff\$305
 18.4R46 New Buff\$1,300
 11.2-38 R1 New Buff\$235
 18.4R28 R2 New Buff\$875
 600/65R38 New Buff ...\$1,100
 520/85R42 R1W New..\$1,450
 900/75R32 New Buff ...\$3,250
OTHER SIZES NEW & USED
NATIONWIDE SHIPPING
WE DEAL!
 800-444-7209 800-451-9864
 913-441-4500 913-682-3201

Gleaner Combines
 '96 R62 RWA\$20,500
 R830 corn head\$8,500
 R830 corn head\$7,500
 EZ Trail 510 GC\$7,500
 UFT 444 GC\$2,950

EZ Trail Gravity Wagons, Grain Carts, and Header Trailers.

Great Plains Tillage Tools
81 Farm Eq. Service
 McPherson, KS 620-241-3100
 1-800-357-3101
 www.81farm.com

Mc - USED IMPLEMENTS -
 2014 9250 Gleaner Draper 35'
 2015 S78 Gleaner
 1998 Gleaner R72
 Gleaner 400 30' rigid
Call us for your AGCO part needs!

AGCO ALLIS WHITE EQUIP.
 GLEANER HESSTON MF • GEHL DIXON HUSQVARNA

Kuhlman Impl.
 LINN, KANSAS
785-348-5547

Case & IH Tractor Salvage
 Case 300's thru 2096
 IH 460's thru 5488
 Over 1000 Tractors on shelf
 New & Rebuilt parts for all brands of tractors/ combines
 Want to buy Case & IH salvage tractors

Elmer's Repair
 CENTRALIA, KS
 785-857-3248
 www.elmersrepair.com

MACHINERY

BERG REPAIR
 14200 Godlove Rd.
 Westmoreland, KS
 785.457.3534

Winkel Calving Pen

Net wrap & twine available. NEW EQUIPMENT
 • BP9010 bale processor
 • TE1710 tedder
 • 504R signature baler
 • VR 1224 wheel rakes
 • Winkel Calving Pen
 • Portable Corral
 • Perfect Tree Saw

USED EQUIPMENT
 • 504I baler w/ monitor
 • Kelderman 10 wheel rake
 • 665 with net
 • RC 9120 mower

USED TRACTORS
 '98 Case IH 8910 MFD ldr & grapple, 8,295 hrs
 '08 Case IH Magnum 275, 2920 hrs
 '15 JD 4066R MFD cab, ldr & grapple, 1,210 hrs
MISCELLANEOUS
 '99 Case IH 2388 combine 4wd
 '89 Case IH 1020 flex head, 17.5'
 '06 Case IH 1020 flex head 25'
 Unverferth 7000 grain cart
 Killbros 1150 grain cart
 JD MX10 rotary mower
 '88 Case IH 8370 mower conditioner
 Case IH 1190 mower conditioner
 IH 1190 mower conditioner
 '04 New Holland BR780 round baler
 '02 Case IH RBX461 twine net
 Gehl WR600 12 wheel rake
 Parker 2600 gravity wagon
 JD 714 disc chisel 9 shank
 Super Rhino 8' blade
 '09 JD Z445 zero turn mower, 412 hours
NEW EQUIPMENT
 Case IH Farmall 50A 2WD ROPS
 Farmall 110U MFD cab ldr
 Case IH 345 disk, 28'
 New Bush Hog 6' & 7' rotary cutters

CASE III AGRICULTURE
 Bush Hog 5', 6' & 7' tillers
 Bush Hog 6' & 7' finish mowers
ROSSVILLE Truck & Tractor
 ROSSVILLE, KANSAS
785-584-6195

Firestone DON'S TIRE & SUPPLY
 18.4-38 Starmax 10pr \$797
 VF 380/90R46 FST RAD RC..... \$2,578
 650/65 R38 Maxam..... \$2,111
 460/85 R34 Maxam 169A8 \$1,123
 Prices and Product availability are subject to change without notice.

PHONE: 785-263-7838
www.donstire.net
ABILENE, KS

• 2014 Bobcat T590 skid steer loader, open cab, 2267 hrs, foot control, like new tracks... \$30,900
 • 2017 Link Belt 160X4 Excavator, 2 buckets, C/H/AC, excellent cond., 2336 hrs...\$124,900
 • Sioux Steel livestock auto head gate with squeeze chute.....\$9,250 IN STOCK
 • Sioux Steel HiQual livestock auto head gate w/ squeeze chute working system, curved alley, crowding tub, inline & rail gates\$21,000 pkg
 • 2021 Kubota SVL65-2, 117 hrs, Factory Why 11/23/22, C/H/AC, 2 Spd, joysticks...\$63,500
 • 2017 Takeuchi TL8, C/H/AC, 796 hrs, 2 spd, joysticks, Std Flow, Hyd Q-A, New Bucket.....\$48,900
 • 2013 New Holland C238, 2509 hrs, open cab, 2 spd, foot controls, new tracks.....\$37,500
 • Danuser Mega Mixer model 575, steel fighting, for concrete or feed.....\$6,395
 • Montana 750R Rancher skid steer post driver\$6,800 IN STOCK
 • NAI Root Grapples84".....\$2,800
 • NAI Rock Bucket w/ Grapple72".....\$3,150
 • New Danuser T3 post drivers\$2,250
 • New Danuser SM40 Hammer post drivers\$8,750
 • NEW '22 Country Clipper Mowers...In Stock!
 • New H&S Manure Spreaders and Hay Rakes...In Stock
 • Hundreds of Skid Steer Attachments In Stock!

7 ACRES OF USED FARM EQUIPMENT ON OUR LOT - CHECK US OUT
 Complete listing on our web: www.jonesmachineryinc.com
 — Click on Inventory on the top right of our home page —

GIVE US A CALL! BUY/SELL/TRADE DAILY
 Smith Center, KS
785-282-3000
 785-282-0432 Cell
 785-686-4005
 Evening Calls Welcome

Tumbleweed Auction Co. LLC
 935 E HWY 36 Smith Center, KS
 785-282-5419
 www.TumbleweedAuctionKS.com
Tumbleweed Auction Co. LLC is taking consignments at anytime & has joined up with Jones Machinery, Inc., with 50 years knowledge in used farm equipment. Online auctions provided by AUCTIONTIME.com with absolute & reserve option available.
Call or stop by today!

Tell them you saw it in Grass & Grain!

MACHINERY

New HydrabedsIn Stock
New Country Clipper mowers
.....In Stock
Used Bumper pull car trailer
.....In Stock
Case IH 5130 2WD w/ loader
.....In Stock
New Winkel flatbed...In Stock
DewEze bale bed live hydraulics\$5,000



WINCHELL'S, INC.
Phillipsburg, KS
785-543-2118

SENECA IMPL. CO.
Hwy. 36 West
SENECA, KANSAS

WE ARE DEALERS FOR:



Kelly-Ryan-Kewanee - Westendorf
C.E. Attachments
H&S

JUST IN:

8', 10', 12', 14', 16'
GATES; CORRAL PANELS
Meyer Forage Boxes and
Manure spreaders

NEW EQUIPMENT:

Med. & heavy duty grapple
buckets

USED EQUIPMENT

Gehl 330 skid loader
Case 830CK gas tractor
GB 660 loader
GB 800 loader
New 3-point 3 wheel windrow
turner
Danhusser 3pt posthole digger

**SKID LOADERS
& ATTACHMENTS**

New Gehl out front dump
buckets, higher reach
New tire chains for skid steers
New Danuser Intimidator tree
& post puller
Pallet forks 48"
New CEA tree & post puller
New Mensch, manure scrprs
New Danuser and Lowe post
hole diggers, skid loader
mounts
New brush grapples
New Bale Spears for big rnds

**CALL TODAY:
785-336-2621**

EMPLOYMENT

ADVERTISING SALES representative wanted. Competitive pay, benefits. Phone 785-539-7558.

ILS Farms is looking to hire a full time Sprayer/Applicator. Individual will get to work with and operate John Deere sprayers equip with state-of-the-art technology.

Some experience is preferred, but willing to train. Basic knowledge of newer John Deere sprayers, Commercial Applicator Certificate, and Class A and/or CDL would be a plus. Must be able to pass post offer employment testing.

Competitive pay, commensurate with experience with potential for annual bonus.

Company paid health, dental & vision insurance for employee.

401(k) with company matching
Holiday pay and a great PTO plan

All interested individuals should apply online, <https://www.ilsbeef.com/jobs> in person at 551A SW 30 Rd, Great Bend, KS or call 620-792-6166.
EOE

PETS

HEELER/ BORDER COLLIE cross puppies out of working parents. 4 months old, had 1st round shots, ready to go. 785-770-7969

Border Collie Puppies For Sale



Parents on site; great with livestock, love to play fetch, gentle with children. \$300 each. Eight weeks Sept. 22, 2022. Call or text: 1-785-741-3111

WANTED

WANT TO BUY SALVAGE and non-running ATV's, snowmobiles, jet skis, and dirt bikes. Any condition, cash paid, will pick up. 402-469-2002.

MISCELLANEOUS

SQUARE DANCE LESSONS Wednesdays at 7:00 p.m. Senior Center, 301 N. 4th, Manhattan, KS.

BUILDINGS / BLDG MTL.

Metal Panels & Accessories

THE VALUE LEADER. WE WON'T BE UNDERSOLD CALL FOR CURRENT METAL PRICING • DELIVERY AVAILABLE • WESTERN METAL Best Service Louisburg, Kansas 1-800-489-4100

SMITH POSTYARD

Hedge Post Delivery Available JEFF SMITH 620-496-8956

DIAMOND L SUPPLY

Dwight, KS
• 1.888.608.7913 • 785.482.3211

Metal Roofing & Siding

All Steel & Post Frame Buildings

Walk-doors, OH doors, Insulation, Livestock equipment, Scales, Miraco, Waterers, Bale Beds & Cake Feeders, Protein Tubs

Delivery Available
Customers are #1

K-State Innovation Lab lands \$750K award to study sorghum and millet in Madagascar

By Pat Melgares, K-State Research and Extension news service

Researchers in a Kansas State University innovation lab that develops technologies to improve the resiliency of sorghum and millet production have received \$750,000 to spur the crops' production and value in Madagascar.

Officials with the Feed the Future Innovation Lab for Collaborative Research on Sorghum and Millet (SMIL) said the project will take a look at every aspect of the value chain – from production in farmer's fields to its eventual use in food and other products – in hopes of addressing the crippling effects of climate and drought in that country's sorghum industry.

"Madagascar faces numerous challenges in the face of climate change impact and the urgent need for sustainable economic development," said Kira Everhart-Valentin, the

lead sorghum value chain specialist on the project.

Everhart-Valentin said sorghum – as a resilient and climate-smart cereal crop – has "a promising role to play in expanding opportunities in food security and environmental conservation, while also helping to enhance growth in the private sector."

"This project will identify the strategic entry points for prioritizing investments and accelerate the development of Madagascar's sorghum value chain in a way that brings impact and value to local communities," Everhart-Valentin said.

The challenges currently faced by farmers in Madagascar are familiar to researchers in SMIL's global network: climate change, degradation of the environment and lack of economic opportunity.

Everhart-Valentin said multiple years of extreme drought have left more than one million people

in Madagascar at high risk for malnutrition and severe income insecurity – particularly in the island nation's southern regions.

"Drought has also created significant challenges to traditional agricultural production systems upon which nearly 80% of the population relies for their livelihoods," she said.

The \$750,000 award from the U.S. Agency for International Development will help project members better understand the potential opportunities for growing sorghum in Madagascar. Everhart-Valentin said the work proposes further diversifying the existing farming systems in response to environmental, product and market challenges that smallholders and the local food system currently face.

The project will also explore the potential of adding value to sorghum production by connecting it to the livestock feed

sector, where there is currently challenges associated with the supply of traditional feed ingredients.

Timothy Dalton, director of SMIL, said the project is an example of leveraging the lab's international sorghum network and foundation in cutting-edge research and technology to fast track this project.

"Madagascar is yet another challenging environment and we hope to contribute to the development of new opportunities for rural income, more efficient livestock systems and increase resilience of the food system to environmental and economic shocks," he said.

Everhart-Valentin said the project, which began in early September, will help to inform sorghum production in the United States – particularly in semi-arid agriculture regions – as well as contribute to global marketing opportunities.

The 18th Gardiner Angus Ranch fall production sale signals a bullish future for quality cattle

There's no "secret sauce" required to produce Angus cattle with value throughout the supply chain. What is required, however, is the unwavering discipline to use proven tools, manage lowly heritable traits, select for highly heritable traits, collect data, use the data to make the best educated breeding decisions—and do it over and over, and over again, decade after decade. Since 1964, when Henry Gardiner made the bold decision to use only progeny proven, high accuracy sires, the ranch's breeding program has been 100% AI and ET. Every calf, registered or commercial, is designed to add value from beginning to the end of the supply chain. Today, GAR Angus cattle are some of the most marketable beef genetics globally.

Lot 1, GAR Home Town K681, commanded the attention of many of the most progressive Angus producers in the country. Randall Grimmus, Grimmus Cattle Co., Hanford, California, outlasted all competing bidders online and on the seats with a winning bid of \$50,000. Jason Faria, FB Genetics, Dumas, Texas, and Jody Chenevert, C5 Angus, Plaqueville, Louisiana, partnered on Lot 187, GAR Fireball L1071, a maternal brother to Home Town with a 121 %IMF ratio and +2 Marbling, on a winning bid of \$32,000. Two bulls, Lots 2 and 3, both Home Town sons, sold to JLB Ranch, Jim Bosler, Douglass, Kansas, and Kenny Wood, JJ Ranch Resources, Junction, Texas, respectively for \$20,000 each.

Lots 7 and 9, GAR Home Town P121 and GAR Home Town P201, sold for \$17,000 each to FB Genetics and Dudley Brewer, Brewer

Land and Cattle, Oakwood, Texas, respectively. Brewer and FB Genetics also paid \$16,000 each to own Lot 23 and Lot 188, respectively. FB Genetics continued to add to their list of impressive bull selections with Lot 4, GAR Home Town M105, paying \$15,000. Home Town sons continued to dominate the sale as Lot 24, GAR Home Town 71G, sold to William O'Malley, UV Ranch/O'Malley Farms, Henrietta, Texas, for \$14,000. Henry Nighswonger, Alva, Oklahoma, and Randall Spare, RMS Cattle LLC, Ashland, Kansas, partnered on Lot 60, a powerful Home Town son with over +2 marbling and +14 CED, and paid \$13,500 to own him. Long-time GAR customer and friend, Bill Freeman, Cunningham, Tennessee, selected Lot 82, another high marbling, high growth, double digit CED son of Home Town on a winning bid of \$13,500.

Lots 5, 6, 16, 26, 34, 35, 36, and 225, each sold for \$13,000 to FB Genetics; Brian Walt, Collyer, Kansas; Kent Smith, Mountain View, Missouri; UV Ranch; Aaron Graft, Graft Farms, Dallas, Texas; John Fox, Fox Angus, Paris, Arkansas; Forest Griggs, Hartsville, Tennessee; and Lyman Marion Ramsay, Grand Bay, Alabama, respectively. JLB Ranch, one of the most progressive commercial operations in Kansas, had the winning \$12,000 bid on Lots 12, a GAR Dual Threat son and Lot 13, a GAR Combustion son, both top 1% ROI. Johan Friesen, Seminole, Texas, paid \$12,000 to own Lot 401, a Home Town son with near perfect balanced combination of CED, early growth and elite end product merit.

Lots 15, 30, 37, 197 and 207 sold for \$11,000 each

to Kent Smith; Jim Birdwell, Birdwell Ranch, Fletcher, Oklahoma; Enrique Garcia, Santa Elena Ranch, Saltillo, Mexico; and Tommy Cartrite, Sunray, Texas. Marissa Fisher, 2015 GAR fall intern, now beef operations manager at the University of California, Davis, selected Lot 67, GAR Home Town K571, on a winning bid of \$10,500. Santa Elena Ranch and Jerry Wrinkle, Wrinkle Cattle Farms, Hartsville, Tennessee, paid \$10,500 each to own Lots 193 and 217, respectively.

The female portion of the sale lit a new fire of excitement! One of the most discussed females to sell this fall is Lot 420, GAR Identified 781S. 781S is an outcross, triple 1% Method Genetics, +1 marbling and REA and top 1% \$M carrying a GAR Home Free heifer calf! At the end of fierce bidding online and on the seats, Roger Hirschy, Hirschy Angus Farms, Orlando, Florida, had a winning bid of \$210,000. This young female may offer the most tremendous genetic opportunities to add value to sell at GAR.

Lot 422, GAR Home Town 311S, top 1% for all the traits of economic importance, sold to James Branham, Grand Terra Farms, Miami, Oklahoma, for \$14,000. Lot 421, GAR Home Town F131, is line bred Sure Fire, over +1 for marbling and REA and Top 3% MG ROI, carrying a GAR Transcendent heifer, sold to Karl M. Kiracofe, Kiracofe Angus, Churchville, Virginia, for \$12,000. Wes Mitchell, Optum Angus, Seaman, Ohio, selected Lot 481, GAR Genuine 200, a maternal sister to Home Town, with top 1% marbling and top 5% CED, on a winning bid of \$9,500. Santa Elena Ranch and Burnis Coleman, Black-

street Angus Ranch LLC, Graniteville, South Carolina, each paid \$7,500 for Lot 425 and 482, respectively. GAR cooperator, Doug Peterson, Peterson Prime Angus Ranch, New Boston, Missouri, selected Lot 424, GAR Identified F341, to add to his donor herd, on a winning bid of \$7,000.

Five females sold for \$6,500 each. Lots 427, 439, 453, 466 and 480X, sold to Scott Shrauner, Elkhart, Kansas; GAR cooperator Robin Wilson, Rocking W Angus, Jefferson, Georgia; Santa Elena Ranch; and Josh Worthington, Worthington Angus, Dadeville, Missouri.

The 18th Fall Production Sale featured the largest offering of elite commercial females to sell to date. The 732 head of bred commercial females sold with complete Method Genetics EPDs and indexes for MPI, QPI and ROI. The majority of the females were bred AI to GAR Home Town, GAR Transcendent, GAR Kansas and GAR Grass Roots. The high selling group of commercial cows, Group #1, sold to Richard Kiekow, Miles City, Montana, for \$3,400 each. Bill Boehm, Wellsville, Kansas, paid \$3,000 each to own Group #2. Aaron Graft, Graft Farms, Dallas, Texas purchased Group #5 and Dale Thompson, Hilltop Angus, Mount Gilead, North Carolina, purchased Group #10 on a winning bid of \$2,600 per head.

Three groups of commercial heifers, Groups #11, 12 sold for \$2,800 per head to Richard Kiekow. Another \$2,800 per head group, #13, sold to Kenny Wood, JJ Ranch Resources, Junction, Texas. Groups #55 and 56 sold to Luther Winch, Winch Ranch, Montgomery, Texas, for \$2,700 per head. Four

groups, #19, 20, 21 and 22 sold for \$2,500 per head to Aaron Graft, Graft Farms; and Gregg Griffin, GG Angus, Olton, Texas. Long time commercial customer, Mike Gibson, Gibson Ranch, Paducah, Texas, purchased Groups #14, 15, 16, 17 and 18 on a winning bid of \$2,400 per head.

Notes of Interest:
A total of 1,178 head sold to 169 buyers from 26 states and Mexico.

This was the largest offering of bred commercial Angus females to sell at Gardiner Angus Ranch.

Volume Buyers—Bulls: Michael Wilhite, Bar W Cattle Co., Henderson, Texas; Jeff Wilson, Wilson Livestock LLC, Franklin, Texas; JLB Ranch, Jim Bosler, Douglass, KS; Dudley Brewer, Brewer Land & Cattle, Oakwood, Texas; Enrique Garcia, Santa Elena Ranch, Saltillo, Mexico; Brent Haas, Wilcox, Arizona; Whitney Hall, Loco, Oklahoma; Steven Mafrige, Y Bar Ranch, Tilden, Texas; John Mazoch, Bueche, Louisiana; James Milligan, DJV Cattle Co., LLC, Elgin, Arizona; William O'Malley, UV Ranch/O'Malley Farms, Henrietta, Texas; Tim Thatcher, Thatcher Land & Cattle, Pueblo, Colorado; Jim & Cheryl O'Brien, Mullen, Nebraska

Volume Buyers—Reg. Females: Enrique Garcia, Santa Elena Ranch, Saltillo, Mexico; Gregg Griffin, GG Angus Ranch, Olton, Texas; Josh Worthington, Worthington Angus, Dadeville, Missouri.

Volume Buyers—Commercial Females: Josh McKinney, McKinney Land & Cattle, May, Oklahoma; Mike Gibson, Gibson Ranch, Paducah, Texas; Michael Rogstad, Rogstad Farms, Bismarck, North Dakota; Ryan Shotkoski, Lexington, Nebraska.

Since 1954
GRASS & GRAIN

YOUR



AUCTION SOURCE

Never miss a sale! Subscribe today!

Toll Free: 877-537-3816

Pat Koons Family is the 2022 Wall of Honor inductee by Kansas Fairgrounds Foundation

The Kansas Fairgrounds Foundation announced the induction of the Pat Koons Family of Burdick as the 2022 Wall of Honor inductee in a combination of their 2022 Boots and Bling event and then again during the Kansas State Fair Grand Drive Breeding Female Supreme drive. Pat and his family have been lifelong supporters of the Kansas livestock industry and the Kansas State Fair with Pat serving on the Kansas Fairgrounds Foundation Board of Directors from 2008 to 2016.

The Dewey Ranch south of Manhattan. He also married his first wife Patricia "Mrs. Pat" in 1966 and they had two sons, Vince, and Bill. He then managed the OK Ranch south of Junction City. In 1971, Pat went to work for Cattle-Fax as a market analyst, developing grass roots producer support for an entity. In 1972, Pat assumed the general manager position of Kearny County Feeders Inc. near Lakin. In 1983, Pat and his young boys, lost their beloved wife and mother to cancer.

During the next 34 years Pat developed natural, NHTC, source and age programs, Bred Heifer Program and Auction, and was responsible for pricing options, feed yard operations and customer relations. In his spare time, he served on the KLA Board of Directors, Feeder Council chairman, and the Beef Empire Days board of directors as well as past president, along with serving on the National Livestock and Beef Board and sharing his time with the Kansas Fairgrounds Foundation.

In 1984, Pat married Sharon, a former Kansas Wheat Queen, and they enjoyed the blessing of three additional children born into the family, John, Danny, and Betsy. All five of the Koons children grew

up active in 4-H, participating in various activities at the State Fair. The children excelled in 4-H qualifying for the State Fair in cooking, baking, style review, clothing construction, photography, public speaking, and demonstrations. They also exhibited lambs, horses, Angus, Hereford, Shorthorn, Maine-Anjou, Chianina, AOB and crossbred steers and heifers. Pat noted that 2006 was a very memorable year for the Koons children, as they exhibited both the Grand and Reserve Grand Champion Hereford Steers at the 2006 Kansas State Fair.

Pat is a member of the Livestock and Meat Industry Council Royal Board and past president. Pat was the lead in raising funds for the construction of the Stanley Stout Center and part of the team that oversaw building this remarkable highly utilized facility.

In 2008, Pat and Sharon chose to return to his roots in the Flint Hills and became a self-employed rancher overseeing a cow-calf and stocker operation. Pat continues to share the life experience and insight of the cattle industry as a cattle feeding consultant. Pat and his wife, Sha-



The Pat Koons Family includes: Pat and Sharon Koons; Vince Koons, wife Lisa with children Amber, Ryan, and Walker; Bill Koons, wife Jennifer with children Baxter and Charlie; John Koons, wife Marley with children Kirbe, Kipton, and Kolby; Danny Koons, wife Jessika with children Kamryn, Presley, and Sawyer; Betsy Gilchrist, husband David with children Grant, Jake, and Elly.

ron, have been married for 39 years. Pat's five children and 14 grandchildren maintain a presence at livestock shows and competitions. While on the Kansas Fairgrounds Foundation Board, Pat served as Wall of Honor chairman, actively involved in the selection of the honorees. The Foundation Board spearheaded the building of the Lair White House on the Kansas State Fairgrounds during Pat's tenure, which now is home to the State Fair Museum

and the Foundation's office. The family has a passion for agriculture and in particular the livestock industry. A big part of the Koons' family activities is an involvement in consumer education; to inform the general public on the importance of American agriculture and the livestock industry.

As the legacy of the Pat Koons Family is written, it will show the importance of "Family", to understand that you should treat everyone fair, that your word is your bond and that you always "Ride for the Brand."

KDA offers cost-share funds for irrigation technology in northwest Kansas

The Kansas Department of Agriculture's Division of Conservation has partnered with the Kansas Groundwater Management District 4 (GMD 4) to offer funds to assist landowners in that district with irrigation efficiency technology.

The GMD 4 Irrigation Technology Initiative is designed to promote irrigation efficiency by providing cost-share assistance to landowners who invest in conservation practices by purchasing technology including automated soil moisture probes, mobile drip irrigation systems, autonomous pivot systems, remote monitoring systems, and more. This project is funded through the Kansas Water Plan with additional funding from GMD 4.

Applications for the cost share funds began being accepted October 17, 2022, and will be approved on a first-come, first-served basis through February 2023 or until all funds have been allocated. Only land located within GMD 4 will be eligible for this initiative.

GMD 4 includes all or parts of ten counties in northwest Kansas and comprises nearly 5,000 square miles. It is governed by a locally elected board representing land owners and water users. GMD 4 has actively worked toward water conservation in the district, including establishing a Local Enhanced Management Area (LEMA) to set goals and control measures to aid in water conservation.

Applications for cost share funds must be made through local conservation districts; please contact your conservation district for details about funding eligibility. A directory of conservation districts can be found at agriculture.ks.gov/ConservationDistricts. For more information about the initiative, call Dave Jones, KDA Division of Conservation resource protection planner, at 785-564-6623.

****AUCTION****
SATURDAY, OCTOBER 22, 2022 — 11:00 AM
 5035 SE 3rd Terrace — TECUMSEH, KANSAS
 Glassware * China * Antiques * Collectibles
 * Heirloom Sterling, svc. for 8 * Quilts * Furniture * Household
 * Tools * Garage items & more!
 See website for list & pictures: whunterauctions.com/ac.htm
 Auctions by WAYNE HUNTER • 785-221-9622

ESTATE AUCTION Reminder
SATURDAY, OCTOBER 22, 2022 - 9:00 AM
 2110 Harper, Dg. Fairgrounds, Bldg 21 (Climate Control)
 LAWRENCE, KANSAS
 * VINTAGE FURNITURE, COLLECTIBLES & MISC.
 Vintage Pyrex Collection, Cast Iron, Lawn Equipment,
 NEW TOOLS & MUCH MORE
 5 Display Cases Full of HIGH END JEWELRY!
 Please visit us online: www.KansasAuctions.net/elston for Pictures!
 Very Large Auction! Concessions: Worden Church Ladies.
INSPECTION DAY OF AUCTION ONLY. KS Sales Tax Applies
SELLERS: RAY & MERRILL ROMIG (Baldwin), & OTHERS
 ELSTON AUCTIONS * (785-594-0505) (785-218-7851)
 "Serving Your Auction Needs Since 1994"

AUCTION
SATURDAY, OCTOBER 29, 2022 — 10:00 AM
 Located at 230 N. 2190th Rd., LeCOMPTON, KANSAS
 7 Guns (sell first); Liberty Signature 24 Gun safe; selection of Ammo, Decoys; Large selection of Baseball cards, 1980s; Quantum QJ6, 6-wheel power chair w/tilt, like new; Titan power chair, batteries new '22; lift chair; Grasshopper 725K dsl. 61 w/15B power vac; TroyBilt SP mower; TroyBilt Jet, gas leaf blower; Resin Eagle flag holder statue; Good Selection of NASCAR items; Louisville Slugger bag w/contents; 5 kerosene lanterns; Antique wardrobe & Hoyer cabinet; Oak china hutch; Craftsman compound miter saw; I.R. 60 gal. 3HP air compressor; 2 tool chests; Century 80 gasless wire welder; 3 floor jacks.
CAMARO & DUNE BUGGY:
 1982 Camaro Hot Rod 454, bored, 30 over, Turbo 400 trans., stall 2600, MUCH MORE! Dune Buggy 2-seater, VW motor, selling approx. 2 PM.
 Selection yard art, hand & shop tools, welding items, air tools, CRAFTS, SEWING, FURNITURE, etc. etc.
NOTE: Very partial listing. Something for everyone. Come early and enjoy the scenic River Road to Auction. Guns not onsite until auction day. TWO RINGS. Cash or check. No Cards.
The Late LARRY HUNTER, LINDA HUNTER, SELLER
 Pics & Info:
www.wischroppauctions.com
 WISCHROPP AUCTIONS * 785-828-4212 & ELSTON AUCTIONS

LAND AUCTION
SATURDAY, NOVEMBER 12, 2022 — 10:00 AM
 Cougar's Den, 101 Main St. — MORROWVILLE, KANSAS
316.9± ACRES WASHINGTON COUNTY LAND
TRACT 1: FSA Farmland = 157.42 Ac. with 149.41 Cropland Ac.
TRACT 2: FSA Farmland = 156.82 Ac. with 94.09 Cropland Ac.
ONLINE & PHONE Bidding Available - Register NOW!
 Download our Midwest Land & Home APP on your device and Get Registered to BID ONLINE Today!
 For Complete Details visit: www.MidwestLandandHome.com
 Stay up to date on auctions & listings LIKE us on Facebook: Midwest Land and Home.
MIDWEST LAND & HOME **GOEBEL FARMS, SELLER**
 Mark Uhlik — Broker/Auctioneer - 785.325.2740
 Jeff Dankenbring — Broker
www.MidwestLandandHome.com
 When you want the Best, Trust Midwest!

800 ACRES Contiguous! Versatile Ranch/Farm SW of Hutchinson, Kansas in Reno County with 3 home sites, 2 occupied, numerous outbuildings, live creek, 2 ponds, cross fenced, cultivated, pasture, CRP, and Trees.
 21417 W Castleton Rd, Arlington, KS
4 Tax Statements, 4 addresses! \$2,696,700
EST. 1902
J.P. WEIGAND & SONS INC.
REALTORS*
 Ken Patterson: 620-218-1713
 J.P. Weigand & Sons, Inc.
KenPatterson.weigand.com

REAL ESTATE AUCTION
WEDNESDAY EVENING, NOVEMBER 2, 2022
 * 7:00 PM *
AUCTION held LIVE & ONLINE at LYNDON, KANSAS
 Community Building, 204 S. Topeka Avenue
Selling 427 AC +/- OSAGE COUNTY, KANSAS
Between Quenemo & Lyndon, KS. 2 Tracts have Salt Creek running thru them, with Tillable. WILDLIFE HAVENS!
TRACT I: 73 ac +/- Mostly tillable, road frontages Hwy. 68 & Ratner Rd.
TRACT II: 153 ac +/- Salt Creek with heavy timber & tillable.
TRACT III: 52 ac +/- Mostly tillable.
TRACT IV: 148 ac +/- Salt Creek with heavy timber, 69+/- tillable, access on S. Shawnee Hts. (low maintenance road).
TRACT V: 1 ac +/- Corner Ratner Rd. & Hwy. 68
INFORMATION & ONLINE BIDDING:
www.Superiorlandgroup.hibid.com
Maps-Info: www.wischroppauctions.com
RAYMOND GOLDSMITH ESTATE, SELLER
SUPERIOR REAL ESTATE & LAND GROUP
WISCHROPP AUCTIONS* 785-828-4212

LAND AUCTION
160+/- ACRES MARSHALL CO., KS CROPLAND
FRIDAY, NOVEMBER 4, 2022 — 10:00 AM
 Auction Held at Centralia Community Center,
 106 John Riggins Ave., CENTRALIA, KS (Follow signs)
TRACT: SE 1/4 in Section 35, Township 4 South, Range 10 East of the 6th P.M., Marshall Co., KS, consisting of 160 acres m/l (Noble Township).
FSA INFO: Farmland Acres - 157.69; DCP Cropland Acres - 135.53; Base Acres - Soybeans 90.56, Corn 43.94; PLC Yield - Soybeans 32, Corn 102.
FARM LOCATED: From Vermillion, KS, go 4 miles South on 29th Ter. Rd., and the farm is on the East side. The Nemaha County line is 1 mile to the east.
DESCRIPTION: Farm consists of 135+/- acres of terraced Cropland. The balance is hayed waterways, pond and light timber. This farm has primarily been in a Corn and Bean rotation. The farm is located along a good rock road.
TERMS: Cash with 10% down payment/earnest money on day of sale with the balance due in full on or before December 5, 2022 with delivery of deed, and marketable title. Full possession will be given at closing, subject to present tenant's rights. Seller & Buyer equally split cost of standard title insurance, and attorney fees for preparation of contract deed-escrow.
This land is located in a good farming community, and should merit the serious consideration of anyone wanting an individual unit or add-on acres. Look it over before sale day, and come prepared to BID. Statements made day of sale take precedence over any advertised or previous statements.
JOHN D. & WILLIAM D. MASON
 For inquiries, contact Brokers & Auctioneers:
OLMSTED REAL ESTATE
 Tom Olmsted: 785-562-6767 * Rob Olmsted: 785-353-2210
www.olmstedrealestate.com

GRASS & GRAIN makes a **Great Gift!**
 Perfect for young farmers starting out on their own as well as Graduations • Birthdays • Weddings
 Anniversaries and other special occasions!
 New Print Subscriptions can be purchased Tax Free with mention of this special!
In-State Renewals starting at: 1 Year - \$43*, 2 Years - \$80*, 3 Years - \$111*
 *plus applicable sales tax - call if unsure for your area, or for Out of State Pricing
Online Only Edition: 1 Year - \$35, 2 Years - \$63, 3 Years - \$84
 For questions or to subscribe, call, email, or send a check to:
 785-539-7558 • agpress3@agpress.com • PO Box 1009, Manhattan, KS 66505



2022 SHAWNEE CO. FAIR LIVESTOCK GRAND AND RESERVE CHAMPIONS



The grand champion beef was shown by Lilly Bayless, Auburn.



At the halter of the reserve champion beef was Shelby Showalter, Riverside.



The grand champion sheep was shown by Emily Peterson, Dover.



The reserve champion sheep was exhibited by Doug Peterson, Dover.



Showing the grand champion swine was Emily Peterson, Dover.



The champion goat was led by Shelby Showalter, Riverside.



Leading the reserve champion goat was Riley Showalter, Riverside.



The reserve champion swine was shown by Shelby Showalter, Riverside.

These local businesses are proud to support all the Shawnee County Fair exhibitors!

 STOCKGROWERS STATE BANK

Congratulations 4-H Champions!

www.stockgrowers.biz

Maple Hill | Paxico | Alma | Silver Lake

CONGRATULATIONS
TO ALL LOCAL 4-H YOUTH ON A SUCCESSFUL FAIR!

 **KanEquip Inc.** 

18035 US-24 | WAMEGO, KS 66547 | (785) 456-2041
2901 NW US-24 | TOPEKA, KS 66618 | (785) 267-9200

 **Rezac Livestock Commission Company, INC.**

Sales Every Tuesday • St. Marys, KS

Barn Phone: 785-437-2785
www.RezacLivestock.com





2022 MARSHALL CO. FAIR

LIVESTOCK GRAND AND RESERVE CHAMPIONS



Tucker Michaelis exhibited the Grand Champion Market Beef.



The Reserve Champion Market Beef was shown by Brooke Porter.



The Grand Champion Breeding Beef was shown by Jansen Gerstner.



Spencer Schmidt showed the Reserve Champion Breeding Beef.



The Grand Champion Market Swine was shown by Zephyr Landoll.



Shaylee Vering drove the Reserve Champion Market Swine.



The Grand Champion Breeding Swine was shown by Zephyr Landoll.



Zephyr Landoll showed the Reserve Champion Breeding Swine.



Tate Michaelis exhibited the Grand Champion Market Sheep.



Abigail Steinfort showed the Reserve Champion Market Sheep.



Tate Michaelis led the Grand Champion Breeding Sheep.



The Reserve Champion Breeding Lamb was shown by Kate Frese.



Isabelle Pralle exhibited the Grand Champion Market Goat.



Exhibiting the Reserve Champion Market Goat was Craiton Ring.



The Champion Breeding Goat was shown by Isabelle Pralle.



Tate Michaelis showed the Reserve Champion Breeding Goat.



Round Robin Showmanship winners were, from left: Champion Senior Paxton Voet; Reserve Senior Chloe Voet; Champion Intermediate Zephyr Landoll; Reserve Intermediate Avery Bishop; Champion Junior Callie Schmidt; Reserve Junior Carson Vering.

CONGRATULATIONS
TO ALL LOCAL 4-H YOUTH ON A SUCCESSFUL FAIR!

1152 PONY EXPRESS HWY | MARYSVILLE, KS | (785) 562-2377

Proudly supporting all Marshall County 4-H members are these area businesses.

PRAIRIE VALLEY VETERINARY CLINIC
BOARDING & GROOMING

Dr. Don Musil
Blue Rapids, KS • 785-363-7903



Earning Senior Reserve All Around at the Marshall County Fair was Krista Porter.



Tessa Parthemer was named Intermediate Champion All Around and Kyler Parthemer received Reserve Champion All Around.



Champion Junior All Around honors went to Trevor Wessel.

MARYSVILLE LIVESTOCK INC. Every Thursday at 12 Noon
1180 US Hwy. 77, P.O. Box 67, Marysville, KS 66508
Bob Holle, Manager • 785-562-1015

TO SEE OUR LATEST DETAILED MARKET REPORTS AND UPCOMING CONSIGNMENTS AND SPECIAL SALES
www.marysvillivelivestock.com

Market Report for 10-13-22. 343 Head Sold.

STEERS/BULLS	BEEF	Individual Report	BRED COWS:
300-400#	\$238.00-\$220.00		N/T
400-500#	\$213.00-\$200.00	10 blk@329# \$238.00	HFRETTS:
500-600#	\$193.00-\$175.00	14 mix@473# \$213.00	\$116.00-\$105.00
600-700#	\$180.00-\$168.00	21 mix@573# \$193.00	COWS-HIGH
700-800#	N/T		YIELDING:
800-900#	N/T		\$90.00-\$65.00
900-1,000#	\$165.00-\$157.00		COWS-LGT
	HEIFERS		WT &
300-400#	\$190.00-\$175.00		LOW YIELDING:
400-500#	\$176.00-\$168.00	14 blk@552# \$172.50	\$60.00-\$49.00
500-600#	\$172.00-\$160.00		BULLS:
600-700#	N/T		\$91.00-\$88.00
700-800#	N/T		
800-900#	N/T		
900-1000#	N/T		

FIELDMEN

Jim Dalinghaus 785-799-5643 Baileyville, KS	Dave Bures, Auctioneer 402-239-9717 Odell, Nebraska	Jeff Cook 785-564-2173 Hanover, KS	Greg Anderson 785-747-8170 Waterville, KS
Trevor Lundberg 785-770-2271 Frankfort, KS	Taylor Schotte 785-268-0430 Marysville, KS	Bill Keesecker 785-410-6117 Washington, KS	Greg Schultejeans 785-294-0676 Corning, KS



The Champion Young Bird was shown by Kayla Wetter.

Subscribe to **GRASS & GRAIN** ONLINE at: grassandgrain.com



Quinn Preuss was awarded Reserve Junior All Around.

Herington LIVESTOCK COMMISSION Co.

CATTLE SALE EVERY WEDNESDAY: 11:30 AM

Results for October 12, 2022.

— COWS / HFRTTS / BULLS —

Heiferettes:	Weight	Price Range
	1095-1660	\$68.50-\$78.50
Cows:	1225-1665	\$80.00-94.00

— TOP STRINGS OF EACH CLASS —

STEERS	HEAD	WEIGHT	PRICE
Carlton	65 blk	691	\$180.00
Carlton	11 blk	624	\$180.00
Ramona	64 blk	901	\$170.00
Ramona	60 blk	932	\$169.00
Lincolnvill	60 mix	879	\$165.00

BUCKET CALVES

Wisley	1 blk heifer	250	\$450.00
Wisley	1 blk bull	215	\$440.00
Cedar Point	1 blk bull	210	\$430.00

Manager: Tracy Ediger, 785-366-6645 * Barn Phone: 785-258-2205
Seth Bartel, 620-382-7041 • Tate Becker, 785-258-4165 • Dave Bures-402-766-3743
Bob Kickhaefer, Cell-785-258-4188 • Tim Wildman, 785-366-6152
KFRM AM 550, Every Wed., 8:00 a.m. • www.HeringtonLivestock.com



The Champion Old Bird was shown by Lilly Voet.

GSI GRAIN BINS
ALL SIZES AVAILABLE
Hopper Bins Available
FINANCING AVAILABLE
Harder AG PRODUCTS
West Highway 50
PEABODY, KANSAS 66866
Phone 620-983-2158
www.grainbinsusa.com

Legislation filed to increase funding for USDA foreign market access programs

Recently introduced legislation would increase annual funding for the USDA Market Access Program (MAP) and Foreign Market Development Program (FMD) – two programs aimed at bolstering global demand for U.S. agriculture products.

The programs have bipartisan support, and the bill would double mandatory funding for MAP from \$200 million to \$400 million annually and FMD from \$34.5 million to \$69 million annually.

U.S. Meat Export Federation president and CEO Dan Halstrom said the bill is an opportunity to add value long-term for red meat exports, stating for every dollar invested, there is a net return of \$24.50.

JC LIVESTOCK SALES INC.
Wednesday Sale, Hogs NOON • Cattle 12:30 PM

Report from October 10th & 12th, 2022

STEERS	20	426	196.50		
13	416	234.50	11	448	189.50
6	439	230.00	57	491	179.00
8	453	225.00	18	573	176.50
49	508	206.25	5	608	176.00
27	584	200.00	7	775	168.50
41	622	194.00	6	724	161.00
75	632	193.25	9	832	159.75
29	661	186.50			
33	705	171.50			
5	767	166.50			
5	817	164.00			
8	867	164.00			
HEIFERS	8	405	200.50		

TOP BUTCHER COW: \$81.00 @ 1,853 LBS.
TOP BUTCHER BULL: No Test
FAT HOG TOP: No Test
NO TEST on: Bred Cows, Pairs

EARLY CONSIGNMENTS FOR OCT. 19

- 10 Fall bred Ang cows.....5-9 yrs.....Lyons Angus Ranch
- 65 Angus open hfrs.....600-800#.....Lyons Angus Ranch
- 20 Ang X WF open hfrs.....750-850#.....John Lee
- All Excellent Replacements
- 35 blk X str & hfrs, off cow.....500-650#.....Bandel Ranch

PLUS MORE BY SALE TIME

— NEXT SPECIAL CALF SALE —
MONDAY, OCT. 31ST @ 6:30 P.M.
MEAL: 5-7
Several calves lining up for a good run!

Watch online with cattleusa.com (Tab J.C. Livestock Sales)
Must register to bid.

If you need assistance in marketing your cattle please call & we will be happy to discuss it with you.

JUNCTION CITY, KANSAS • Barn Phone 785-238-1471
Seth Lauer 785-949-2285, Abilene

CLAY CENTER LIVESTOCK SALES INC.
Cattle sales Tuesday, 11:00 AM.

Report from October 11th, 2022

STEERS	11	580	171.50
3	493	187.00	
3	538	183.00	
6	582	183.00	
4	734	168.50	
5	641	160.50	
1	855	159.00	
HEIFERS	8	478	176.50

TOP BUTCHER COW: \$86.50 @ 1,735 LBS.
TOP BUTCHER BULL: \$106.00 @ 2,295 LBS.
BRED COWS: NO TEST
PAIRS: \$1,085

SPECIAL CALF SALE TUES., NOVEMBER 8TH
Nice run of high quality calves from area herds.

NEXT SHEEP & GOAT SALE SAT., NOVEMBER 5TH

Clay Center, Ks • Barn Phone 785-632-5566
Clay Center Field Representatives:
Tom Koch, 785-243-5124 Lance Lagasse, 785-262-1185

KARL LANGVARDT Cell: 785-499-2945	MITCH LANGVARDT Cell: 785-761-5814	LYNN LANGVARDT Cell: 785-761-5813
---	--	---

EMPORIA LIVESTOCK SALE CO.
Bonded & Insured
SALE EVERY WEDNESDAY IN EMPORIA, KANSAS AT 11:00 AM
620-342-2425 or 800-835-7803 toll-free • Fax: 620-342-7741

Date: 10/12/22. Total Head Count: 909.
Cows: \$50-\$84.00; Bulls: \$90-\$99.60.

BULLCALVES	5 blk	810@160.00	
5 blk/blkbwf	726@147.00	17 mix	815@160.00
HEIFERS	60 blk	916@160.25	
4 mix	398@145.00	4 blk/blkwif	946@145.00
6 blk	438@173.00	STEERS	350@215.00
14 blk/bwf	427@170.00	5 blk	398@201.00
4 blk	499@166.00	6 blk	429@207.00
6 mix	489@165.00	4 blk	448@200.00
4 blk/blkwif	515@177.00	9 blk	479@200.00
4 blk	559@172.00	20 blk	527@189.00
30 blk	510@170.00	8 blk	577@182.00
22 blk	581@170.00	12 blk	580@184.00
10 mix	508@169.00	7 blk/blkwif	537@182.00
8 blk	593@169.00	5 blk	531@181.00
5 blk	508@169.00	12 blk	589@181.00
4 mix	516@165.00	4 blk	519@179.00
12 blk	548@164.00	10 blk	593@177.50
5 mix	599@162.00	14 blk	608@186.50
10 mix	650@171.50	5 blk	653@182.50
37 mix	668@171.00	4 blk	660@182.50
5 blk	663@170.00	6 mix	639@181.00
4 mix	633@167.00	4 blk	658@178.50
9 mix	678@167.00	4 blk/blkwif	646@177.00
5 mix	652@166.00	5 blk	674@171.00
7 blk	643@164.00	4 blk	659@168.00
4 blk	695@160.00	4 cross	645@146.50
4 blk	639@158.00	4 blk/blkwif	776@176.00
59 mix	705@168.00	4 blk	793@175.25
7 mix	722@166.00	7 mix	731@173.50
9 blk	757@165.00	12 blk	707@170.00
4 blk	730@164.00	7 mix	749@170.00
30 mix	768@164.00	7 mix	1005@150.00
5 mix	775@161.00	4 blk/bwf	1064@145.00
14 mix	800@162.00		

HINKSON ANGUS INFLUENCE SALE, OCT. 19:

- 20 blk spring bred hfrs, bred to Hinkson bulls, calve mid-March-April
- 200 mostly blk str & hfrs, Hinkson Influence, 450-650#
- 65 blk str & hfrs, Hinkson Influ., 500-600# • 25 blk str & hfrs, Hinkson Influ., 500-650#
- 45 blk str & hfrs, LT weaned, 3 rds shots, Hinkson Influ., 600-750#
- 28 blk & Char str & hfrs, 30 days weaned, 2 rds shots, Hinkson Influ., 600-800#
- 160 blk & Char str, LT weaned, 2 rds shots, Hinkson Influence, 600-850#
- 50 blk hfrs, LT weaned, 2 rds shots, no implants, Hinkson Influ., 650-750#
- 60 blk red & Char str & hfrs, 750-850#
- 65 mix str, 775-800# • 80 mix str, 775-825#
- 10 blk fancy hfrs, no implants, pelvic measure, replac. quality, Hinkson Influ., 775-825#
- 300 mix str, 850-950# • 60 mostly blk hfrs, 900-950#
- & MANY MORE * Check website for up to date consignments

THANK YOU FOR ALL OF YOUR CONTINUED SUPPORT!
YOUR BUSINESS IS ALWAYS APPRECIATED!

For Cattle Appraisals Call:
BRODY PEAK, 620-343-5107 GLENN UNRUH, 620-341-0607
LYLE WILLIAMS, Field Representative, 785-229-5457
MATT REDDING, Field Representative, 620-364-6715
DALTON HOOK, Field Representative, 785-219-2908
WIBW 580 - 6:45 A.M. Thurs; KVOE 1400 - 6:30-6:45 A.M. Thurs. & Fri.
To see more consignments go to: emporialivestock.com

Kansas Profile

By Ron Wilson
Executive Director of
the Huck Boyd
Institute



Dirck Hoagland, J&N Ranch, part 1

Today let's learn about a cross-section of agriculture. Let's talk to a cattle feeder, a timber producer, a crop farmer, a stocker cattle grower, and a beef seedstock producer.

To cover all of these, we could bring together a panel of people from across the state. Or, we could meet a single innovative family which has diversified into multiple segments of the agriculture industry.

Dirck and Natalie Hoagland of J&N Ranch are owners of the family operation that includes multiple components of agriculture. It began in 1866 when Dirck's ancestors homesteaded near the rural community of Tecumseh. The population of Tecumseh and the nearby

area is 696 people. Now, that's rural.

"We still own part of that original farm ground," Dirck Hoagland said. Known as the Decker Farm, it is mostly native prairie that is now leased to local producers.

Hoagland's parents, Joe and Norma Hoagland, started raising registered cattle in 1978. In 1985, they bought a ranch along the Missouri River near Leavenworth and moved their cow herd to that site. Using their initials, the place was named J&N Ranch. Later, the Hoaglands acquired the Gunbarrel Ranch in Wabaunsee County and the F. Morgan Feedyard near Leavenworth.

Dirck earned a baseball scholarship and became a pitcher at Tulane

University, even pitching in the College World Series. After graduation, he moved to Brussels, Belgium where he earned an MBA before coming back to the states. He met and married Natalie, who had majored in education at K-State. They have two boys, ages ten and eight.

Hoagland worked in the corporate world in downtown Kansas City for five years but found he missed ranch life. "I was always drawn to the ranch," he said. Hoagland decided to leave corporate life and move back into the day-to-day operations of J&N Ranch.

The main J&N Ranch is located along the Missouri River near Leavenworth. This includes timbered hills and productive river bottom ground. The land includes fine hardwood trees that are a source of timber harvesting.

J&N Ranch has native stands of oak, ash and walnut trees along three miles of land along the Missouri River bluffs.

The ranch's river bottom farm ground is a fertile

location to produce corn, soybeans, and hay. This is also where they develop and evaluate their bulls and heifers to be sold or retained. That provides a complementary setting to the open rangeland of the Wabaunsee County ranch.

"We work the two ranches together," Hoagland said. The cow herd will go to pasture at Gunbarrel Ranch for the summer and then come back to Leavenworth for the winter. "We have more grass in Wabaunsee County than we need for our cow herd, so we use that extra capacity to run steers as a stocker operation or for a bred heifer program, depending on the market," Hoagland said.

The registered cow herd is a source of bulls and heifers for other cattlemen. Production sales are held twice yearly, plus semen is available. The Hoaglands have done pioneering work in the development of the Black Hereford breed. The F. Morgan Feedyard for finishing cattle is located near the home ranch as well.

see www.jnranch.com.

We commend Joe and Norma Hoagland, Dirck and Natalie Hoagland and their family for making a difference through hard work and diversification in various sectors of agriculture. One could say that they really have it together.

And there's more. Remember the reference to the Black Hereford breed? We'll learn about that next week.

Place your Classified Ad ONLINE today at: grassandgrain.com

785-539-7558

GRASS & GRAIN

AUCTION Reminder
SATURDAY, OCTOBER 22, 2022 — 9:00 AM
Located at 2120 E. Dutch Ave., WALTON, KANSAS
from the 4-way stop in Hesston, KS 6 3/4 mi. east.
**TRACTORS, COMBINE & FARM MACHINERY
LIVESTOCK & FARM RELATED ITEMS**
See Last week's Grass & Grain for listings or go to:
www.hillsborofreepress.com

KENT JANTZ ESTATE * ROSIE JANTZ, SELLER
10:30 a.m. live & online bidding, tractors, combine & equipment only.
Go to equipmentfacts.com. Click on C & H Agri Sales & Service.
Click on sign up to register/bid.

VAN SCHMIDT • Auctioneer/Real Estate
7833 N. Spencer Road, Newton, KS 67114
620-367-3800 or 620-345-6879
Schmidt Clerks & Cashiers/Lunch provided by: Tabor Mennonite Church

Eureka Livestock Sales LLC Under New Ownership
Sole every Thursday, starting with cows at 11:00 am, followed by calves and yearlings
We'd love the opportunity to partner with you on marketing your cattle!
Shawn & Dana Mills
Office: 620-583-5008
Shawn: 620-205-8100 Dana: 620-404-0099
[Facebook.com/EurekaLivestockSales](https://www.facebook.com/EurekaLivestockSales)
Join us for lunch inside the sale barn at the Crazy Cow Cafe! Call in orders welcome: 620-583-7476

VALENTINE LIVESTOCK AUCTION CO. Valentine, Neb.
THURSDAY, OCTOBER 20, 2022
Special Spring Calf Sale Featuring Red Angus
• S.T. 1:00 p.m.; Expecting 3200 hd

Valentine Livestock Health Protocol 2022
#4 7-way (2), 5-way viral (spring & fall), pasteurella, and poured or injected w/ Ivermectin (fall)
#3 7-way (2), 5-way viral (spring & fall), pasteurella, no pour on
#2 7-way (2), 5-way once; #1 7-way only

Listings:
220 rd Angus (140s-80h) CRA Pieper genes 575-675#..... Sharp Rn #4
230 rd Angus (200s-30h) NI drugfree 450-550#..... Mike Livermont
200 rd, few blk (100s-100h) hrs not topped- Gill genes 500-650# Chance Knutsen #2
170 rd Angus (95s-75h)..... 475-600#..... Miles, Seth & Jake Addison #4
140 rd Angus NI..... 500-600#..... Larry Johnston & Leibel #4
120 rd strs Gill genetics- powerful set! 575-700#..... Gabe Gropper #4
67 ..rd Angus Ravenscroft genetics 550-625#..... Austin & Bethany Swendener #4
50 ..rd Angus NI..... 550-600#..... Buster & Brad Hand #4
49 ..rd Angus (39s-10h) NI Bieber sired 500-575#..... Cody Luthy #4
160 Angus strs NI..... 550-650#..... Clayton & Cole Gurney #4
200 blk hrs NI..... 450-525#..... Brock & Carol Moreland #4
238 blk NI (140s-98h)..... 500-635#..... 3 Bar Q (Ken Risseeuw) #4
200 blk, bwf, few rd NI hrs not topped- nice F-1's! 550-650# Mike & Shelley Pier #4
150 blk..... 500-600#..... Bob Huss & Johnny Timm
148 blk, bwf (5) (83s-65h)..... 500-600#..... Danielle Robinson #4
130 blk, bwf NI Bowlin genes- hrs not topped 475-600#..... Shad Wobig #4
130 bwf (75s-55h)..... 500-600#..... Kelly Green #4
80 .. Angus strs..... 700#..... Cork & Janet Worth #4
30 .. Angus & blk strs NI Raven & Joseph sired 500-650#..... JP Murphy #4
80 .. char-x & blk NI..... 500#..... Jerry Harms #2
60 .. Angus..... 500-600#..... Kody & Heather Mizer #3
45 .. blk NI Woodhill genes..... 500-600#..... John O'Bryan #4
40 .. bwf, few rd & char-x NI..... 500-600#..... Teeyl Ford #4
28 .. char-x (15s-13h)..... 550-625#..... Bryce McNare
23 .. blk NI..... Mac Meyer
120 blk, x-bred weaned 30 days..... 500-600#..... Bill & Adele Albert #3
14 .. blk & Angus NI weaned-bunk broke 600#..... John Stickney #4

MONDAY, OCTOBER 24, 2022
Special Bred Female & Regular Sale
• S.T. 10:00 a.m. on weigh-ups; Bred Females @ 2:00 p.m.

Spring Bred Females:
120 blk, blk-x (sm-st; 1275-1400#) bred Angus; cf 3-15 for 52 days
The first of many good old cows, you will see this fall & winter.....
..... Craig & Caleb Miles
100 blk, blk-x (st; 1300#) bred Angus; cf 3-15 for 60 days..... Sunny Slope Rn

View our special sales online @ cattleusa.com
Office: 402-376-3611
Greg Arendt, Mgr., C: 402-376-4701 Brogan Arendt, Fieldman, C: 402-389-0281
For complete listing visit our website: www.valentinelivestock.net

AUCTION
SUNDAY, OCTOBER 23, 2022 — 12 Noon
Located at 323 South 1st Street, CARBONDALE, KS
12 Guns (selling first); Ted Nugent Pro Safari Crossbow; Camo body suit; selection Ammo; Army uniform, circa 1940s; 20+/- pocket watches; 4 kerosene lamps; 2 vintage phonographs; Pine corner dinette set; Amateur Radio QSL cards; Delta bench top drill press; DeWalt DW708 miter saw; Poulan 16" chain saw; Tool Shop rolling tool chest; aluminum tri-fold loading ramps; Power converter 24V DC to 250V AC; Large selection of figurines, smalls, collectibles, etc.; assortment of Hand & Shop Tools.
NOTE: Interesting auction with Wide Selection of Merchandise. Come early & enjoy a Sunday afternoon auction. Cash or check. No Cards.
JOE & DINAH TUCKER, SELLERS
Pics & Info: www.wischroppauctions.com
WISCHROPP AUCTIONS * 785-828-4212 *

Central Livestock
811 N. Main St.
South Hutchinson, KS
www.centrallivestockks.com
Clint and Dalli Turpin ~ Owners
Office: 620-662-3371
Hay Auction- Every Tuesday at 9:00 a.m.
Cattle Auction- Every Tuesday at 11:00 a.m.
Sheep/Goat Auction- Every 3rd Saturday at 11:00 a.m.
Horse/Tack Auction- Every 2nd Saturday
SALE RESULTS: 10-11-22

Steers	Heifers
300-399# \$175.00-\$210.00	300-399# \$150.00-\$180.00
400-499# \$170.00-\$215.00	400-499# \$150.00-\$175.00
500-599# \$160.00-\$195.00	500-599# \$140.00-\$170.00
600-699# \$150.00-\$185.00	600-699# \$130.00-\$165.00
700-799# \$145.00-\$181.00	700-799# \$140.00-\$165.00
800-899# \$140.00-\$170.00	800-899# \$130.00-\$150.00
900-999# \$135.00-\$165.00	

Tues., Oct. 25th - Calf/Yearling Special
Tues., Nov. 8th - Calf/Yearling Special
ALL WEIGH COWS & BULLS SELL AT THE END

Holton Livestock Exchange, Inc.
1/2 mile East of Holton, KS on 16 Highway
Livestock Auction every Tuesday at 11:00 AM
****STARTING TIME: 11:00 AM****
MARKET REPORT FOR TUESDAY, OCTOBER 11, 2022
RECEIPTS: 1404 CATTLE
FOR FULL RESULTS, VISIT OUR WEBSITE:
WWW.HOLTONLIVESTOCK.COM

STEERS
1 red Valley Falls 260@255.00
2 blk bwf Sabetha 295@235.00
10 blk red Soldier 429@228.00
14 blk bwf Sabetha 492@226.00
11 blk bwf McLouth 471@224.00
6 blk char Mayetta 477@218.00
9 blk Holton 472@214.00
6 blk bwf 508 204.50
7 blk Topeka 563@199.50
10 blk bwf McLouth 548@199.00
10 blk Mayetta 546@198.00
49 blk red Oskaloosa 605@197.25
72 mix Havensville 651@193.75
6 blk bwf Wheaton 622@191.00
15 blk Holton 578@190.00
4 blk Holton 601@185.00
10 blk Mayetta 608@184.00
14 blk rwf Oskaloosa 690@183.50
83 blk red Soldier 730@183.50
13 blk red Netawaka 748@182.50

HEIFERS
5 blk Lancaster 365@204.00
3 bwf blk Netawaka 400@190.00
6 blk Sabetha 379@188.00
7 blk McLouth 431@185.00
11 blk rwf Topeka 565@180.50
9 blk bwf Mayetta 553@179.00
11 blk bwf Holton 526@175.00
9 blk Soldier 468@175.00
8 blk Mayetta 537@173.00
33 blk bwf Lebo 702@172.50
7 blk Easton 477@171.00
6 blk Oskaloosa 566@170.00
8 blk bwf Circleville 571@168.00
8 blk Hoyt 625@168.00
7 blk Netawaka 762@165.00
11 blk DeKalb, MO 760@152.00

Early Consignments for SPECIAL COW SALE
FRIDAY, NOVEMBER 4, 2022 * 6 PM
Complete Fall Herd Dispersal from Luke Kennedy, Holton, KS
All cows are home raised and calves, 30-75 days old, will be knife cut & vaccinated with Vista 5 & Vision 7/sonnus. Cows will be vaccinated with Vista 5 VL5 & poured with Dectomax.
• 18 blk bwf 1st calf hrs/blk calves sired by sons of Werner Flattop
• 25 blk bwf 2nd calf cows/blk calves sired by Fink Super Duty
• 65 blk bwf cows/calves sired by blk angus bulls 4-10 yrs

Other consignments of Fall Pairs include:
• 48 blk bwf cows/35-65 day old blk bwf calves 3&4 yrs old D Smith
• 38 blk bwf simm x cows/35-65 day old blk bwf calves 3-7 yrs D&B Smith
• 15 bwf & rwf cows/30-60 day old char sired calves 3&4 yrs A Kuckelman
• 5 blk 1st calf hrs/60 day old calves M Hanzlicek

Bred Cows
• 10 blk cows 7&8 yrs bred blk simm bull for March calves M Pickering
• 5 herf cows 3&4 yrs, bred char bull for Feb. 1 calves A Kuckelman
• 20 blk cows 2nd & 3rd per. 3-8 yrs, bred blk angus or char bulls

Dan Harris, Auctioneer & Owner • 785-364-7137
Danny Deters, Corning, Auct. & Field Rep • 785-336-1622
Dick Coppinger, Winchester, Field Rep. • 913-683-5485
Steve Aeschliman, Sabetha, Field Rep. • 785-284-2417
Larry Matzke, Wheaton, Field Rep. • 785-268-0225
Craig Wischropp, Horton, Field Rep. • 785-547-5419
Mark Servaes, Atchison, Field Rep. • 816-390-2549
Barn Phone • 785-364-4114
WEBSITE: www.holtonlivestock.com
EMAIL: dan@holtonlivestock.com
View our auctions live at "Imauctions.com"

DeGeer Gelbvieh
PRIVATE TREATY HERD REDUCTION SALE
We have packages ranging from weaned heifer calves to Fall calving cows.
Call: 620-432-1284 for Details!

EL DORADO LIVESTOCK AUCTION, INC.
316-320-3212
Fax: 316-320-7159
2595 SE Highway 54, P.O. Box 622, El Dorado, KS 67042
Market Report - Sale Date 10-13-22. 1160 head
300-400 lb. steers, \$190-\$235; heifers, \$170-\$200; 400-500 lb. steers, \$183-\$225; heifers, \$141-\$179; 500-600 lb. steers, \$161-\$189; heifers, \$137-\$175; 600-700 lb. steers, \$157-\$183.75; heifers, \$133-\$166.50; 700-800 lb. steers, \$156-\$178; heifers, \$131-\$164.50; 800-900 lb. steers, \$147-\$180; heifers, No Test; 900-1,000 lb. steers, \$148-\$175.50. **Trend on Calves:** Steady to slightly weaker. **Trend on Feeder Cattle:** No test on hrs; str steady-\$3 higher. **Butcher Cows:** High dressing cows \$70-\$85; Avg. dressing cows \$57-\$67; Low dressing cows \$40-\$55. **Bred Cows:** \$750-\$1,170. **Butcher Bulls:** Avg. to high dressing bulls \$70-\$98. **Trend on Cows & Bulls:** \$4-\$6 lower.
Some Highlights Include:
HEIFERS
7 blk 340@178.00
12 mix 395@187.00
8 mix 411@179.00
10 blk 458@175.00
26 blk 511@161.00
10 mix 605@152.00
6 mix 729@162.50
7 mix 779@160.50

STEERS
10 blk 380@229.00
16 blk 423@224.00
4 blk 511@183.00
10 blk 615@173.50
17 blk 634@182.00
55 blk 687@183.75
126 blk 831@180.00
63 blk 925@175.50

Next Sale: Thursday, October 20
• 30 blk/bwf steers & heifers

Thursday, Nov. 10: Special Weaned/Vacc Sale
Saturday, Nov. 26: Special Cow Sale
GO TO OUR WEBSITE FOR DAILY CONSIGNMENT UPDATES
WWW.ELDORADOLIVESTOCK.COM

We welcome your consignments!
If you have cattle to consign or would like additional information, please call the office at 316-320-3212
Check our website & Facebook for updated consignments: www.eldoradolivestock.com
To stay up to date on our latest announcements you can "Like" us on Facebook

Josh Mueller Owner/Barn Manager (316) 680-9680	Van Schmidt Auctioneer/Fieldman (620) 345-6879
Seth Greenwood Asst. Barn Manager/Fieldman (620) 583-3338	Charly Cummings Auctioneer/Fieldman (620) 496-7108
Kyle Criger Fieldman (620) 330-3300	Brandon Fredrick Fieldman (620) 204-0841

Cattle Sale Every Thursday 11:00 AM

REAL ESTATE AUCTION

TUESDAY, NOVEMBER 15, 2022 * 6:00 PM

AUCTION LOCATION: (Held Onsite) 227 Emporia, PAXICO, KANSAS



DESCRIPTION
Let your imagination run wild with the possibilities! This 1.3 acre parcel sits in the heart of Paxico and was previously the USD #329 middle school. The original building has multiple classrooms, office space, storage and bathroom facilities. It is connected to the newer building that is over 3,000 square feet and has a multi-purpose room, a large classroom that was the band room, and a full kitchen area. Even with the buildings there is room to grow with a 1/2 acre of yard and a full playground set. We encourage you to reach out to WB Zoning to ensure your plans fit this location.

Do not miss out on such an amazing facility!
OPEN HOUSE: SUNDAY, OCTOBER 30 * 1-3 PM

REAL ESTATE TERMS: Property sells AS IS, WHERE IS. 10% non-refundable down payment is required day of sale by check. Buyer must be able to close on or before December 16, 2022. Buyer needs bank letter of loan approval or funds verification. Cost of Owners Title Policy to be split equally between Buyer and Seller. Buyers are responsible for understanding all zoning, building and other regulations associated with the property prior to the day of auction. All announcements day of sale take precedence over written materials. Crossroads Real Estate & Auction LLC is representing the Seller.

Check us out on Facebook & Online for more info www.kscrossroads.com
www.facebook.com/KScrossroadsauctions

Crossroads Real Estate & Auction
TERRI HOLLENBECK, Listing Broker/Owner, 785-223-2947
ANDREW SYLVESTER, Auctioneer, 785-456-4352

Seven Day Forecast
WEDNESDAY Sunny High: 65 Low: 38
THURSDAY Mostly Sunny High: 69 Low: 43
FRIDAY Partly Cloudy High: 70 Low: 42
SATURDAY Mostly Cloudy High: 74 Low: 48
SUNDAY Sunny High: 76 Low: 49
MONDAY Partly Cloudy High: 74 Low: 48
TUESDAY Cloudy High: 73 Low: 45

In-Depth Local Forecast
Today we will see sunny skies, high of 65°, humidity of 27%. South southwest wind 1 to 7 mph. The record high for today is 88° set in 2003. Expect mostly clear skies tonight, overnight low of 38°. Light winds. The record low for tonight is 24° set in 2006.

Last Week's Almanac
Date H/L/N Normals Precip
10/7 52/40 72/46 0.05"
10/8 67/41 71/45 0.00"
10/9 78/37 71/45 0.00"
10/10 82/37 70/44 0.00"
10/11 85/64 70/44 0.00"
10/12 75/47 70/44 0.78"
10/13 67/40 69/43 0.00"
Rainfall 0.83"
Normal rainfall 0.52"
Departure +0.31"
Average temp 58.0°
Average normal 57.4°
Departure +0.6°

Today's Local Outlook

This Week's Sun & Moon Chart

Date	New	Day	Sunrise	Sunset	Moonrise	Moonset	Full
10/25	10/25	Wednesday	7:40 a.m.	6:42 p.m.	1:27 a.m.	4:18 p.m.	11/8
		Thursday	7:41 a.m.	6:40 p.m.	2:29 a.m.	4:45 p.m.	
		Friday	7:42 a.m.	6:39 p.m.	3:32 a.m.	5:10 p.m.	
		Saturday	7:43 a.m.	6:38 p.m.	4:35 a.m.	5:34 p.m.	
		Sunday	7:44 a.m.	6:36 p.m.	5:40 a.m.	5:57 p.m.	
		Monday	7:45 a.m.	6:35 p.m.	6:46 a.m.	6:22 p.m.	
		Tuesday	7:46 a.m.	6:34 p.m.	7:56 a.m.	6:49 p.m.	

Local UV Index
0-2: Low, 3-5: Moderate, 6-7: High, 8-10: Very High, 11+: Extreme Exposure

Weather History
Oct. 19, 1844 - The famous "Lower Great Lakes Storm" occurred. Southwesterly winds were at hurricane force for five hours, driving lake waters into downtown Buffalo, N.Y. The storm drowned 200 people.

Growing Degree Days
Date Degree Days Date Degree Days
10/7 0 10/11 24
10/8 4 10/12 11
10/9 7 10/13 3
10/10 9

CONSTRUCTION EQUIPMENT AUCTION

SATURDAY, OCTOBER 22, 2022 - 9:30 AM
125 S. Kansas Avenue, TOPEKA, KANSAS
MOHAN CONSTRUCTION, INC.

NOTE: Due to the straightening of the I-70 viaduct over downtown Topeka, Mohan Construction and many others are forced to relocate. All buildings in the area to be razed. Everything Sells! This is a 60+ year accumulation of Mohan Construction & Costelow Engineering & Tower erectors. This is a huge 1-day auction! This is a LIVE Auction, with partial online bidding. Don't miss this auction!

EQUIPMENT & TOOLS: (2) Case 1845C Uni-loaders, very well maintained; 1978 International, boom truck, Model 1824, gas; Ingersoll Rand, Model 130 air compressor, diesel; Lincoln SA-200 arc welder, gas; Yale 10,000 lb., 2 stage forklift, propane; Uni-Loader trailer; flatbed trailers; scaffolding; job boxes; ladders; torch sets; nailers; portable air compressors; portable heaters; RR jacks; tampers; concrete vibrators; Rigid pipe threaders & vises; Milwaukee magnet drill press; (6) transits; laser levels; portable band saws; Sawzall's; table saws; hammer drills; dump hoppers; chains hoists; scaffolding; many drills; many hand tools; welders; pumps; huge quantity of industrial nuts & bolts; rolls of wire rope; 7/8" 50 OHM Hellax cable; steel cable; Cadweld weld materials, jigs & dies; tons and tons of scrap metals; dimensional lumber; beacon tower lights; overhead shop heaters; vintage signage; cabinetry, office equipment, desks; chairs; bathroom fixtures, interior oak trim, interior doors **and much more.**
TO BE SOLD OFFSITE: 4 office trailers (all need a little work); (5) 40' American, Lufkin & Fruehauf enclosed storage trailers w/contents, appear to be dry; 150' transmission line steel power pole; 160' satellite tower; lightweight FM & ham radio tower structures; scrap iron & equipment. **Offsite inventory is located at 3505 SE 21st St., Topeka, KS. Open for Inspection: Friday, October 21, 10 AM-6 PM. Removal of the offsite: December 31, 2022.**

Impossible to list all.
SEE WWW.KULLAUCTION.COM FOR OVER 150 PHOTOS

OPEN FOR INSPECTION: Friday, October 21, 1-4 PM
TERMS & CONDITIONS: Payment is due the day of Auction! Cash and credit cards will be accepted. 10% buyer's premium if paid by cash, 13% by credit card and 15% online. All equipment sells "as is," "where is." **Concessions**
REMOVAL: Dates & Times: Sunday, Oct. 23, 12-4 PM, Monday-Thursday, October 24-27, 9-4 PM. All items must be removed by Thursday, October 27, 4PM.

Kull Auction & Real Estate Co., Inc.
785-862-8800 * 201 SE 59th ST, Topeka, KS
www.KullAuction.com
Dan Kull, Auctioneer

REAL ESTATE AUCTION

THURSDAY, NOVEMBER 10, 2022 * 5:30 PM

AUCTION LOCATION: (Held Onsite) 1007 Pine St., WAMEGO, KS

OPEN HOUSE: SUNDAY, OCTOBER 30 * 1-3 PM



DESCRIPTION
Here is your opportunity to own a well-maintained property on the edge of town with easy access to Hwy 24. This 3 bedroom/1 bath home has been a rental, but has been kept up well. On the outside you will find a fenced in yard, storage shed, storm shelter and lean-to on the home. You could keep this home as a rental or it would make a great starter home or a place to downsize to.

REAL ESTATE TERMS: Property sells AS IS, WHERE IS. 5% non-refundable down payment is required day of sale by check. Buyer must be able to close on or before December 12, 2022. Buyer needs bank letter of loan approval or funds verification. Cost of Owners Title Policy to be split equally between Buyer and Seller. Buyers are responsible for understanding all zoning, building and other regulations associated with the property prior to the day of auction. All announcements day of sale take precedence over written materials. Crossroads Real Estate & Auction LLC is representing the Seller.

SELLER: JOHN HABLUTZEL TRUST

Check us out on Facebook & Online for more info www.kscrossroads.com
www.facebook.com/KScrossroadsauctions

Crossroads Real Estate & Auction
ANDREW SYLVESTER, Co-Listing Agent/Auctioneer, 785-456-4352
BILL DISBERGER, Co-Listing Agent/Associate Broker, 620-921-5642
TERRI HOLLENBECK, Broker/Owner, 785-223-2947

ARMSTRONG ONLINE AUCTION

(475+ Lots - Furniture, China, Collector Glassware, Lighting, Antiques, Household)

SELLER: Property of the Late KATE ARMSTRONG

Bidding is OPEN NOW!
And will begin Closing at 2:00 PM, Tuesday, 10/25/22

PICKUP/PREVIEW LOCATION: 401 Maple, Cottonwood Falls, KS 66845

475+ LOTS: FURNITURE (Oak Barley Twist Leg Buffet & Table; 6-pc Wicker Patio Set; 6 Bamboo Rattan Folding Chairs; Trunks; Ornate Organ Stool; Roll Top Desk; Oak Curio Cabinet; Dresser w/Marble Top; Blue Leather Couch Hide-a-bed); **CHINA & GLASSWARE** (Royal Babes in the Woods Pitcher; Lots of Flow Blue La Belle China; The Wheeling Pottery Co Candle Stick; The Wheeling Pottery Co Flow Blue Plant Stand); **LIGHTING & COLLECTOR GLASS** (Ornate Stained Glass Floor Lamp; Bronze style Floor Lamp Tiffany Studios Style Shade; Steuben Era Glassware; Bronze statue stained glass lamp; Lots of Decorative Lamps (Damascene Style Shade, Tiffany Studios Lamp); 8 Ceiling Fan Globes (Possibly Tiffany)); **ANTIQUES & COLLECTIBLES** (Bronze by A Moreau; Cast Brass Horse Door Stop; Cast Iron Firemans Assoc. Plaque; Sterling S-N-Ps; Rival miniature cast iron stove); **HOUSEHOLD & MISC** (Misc Quality Christmas Décor; Artificial Plants; Kitchen Items; Brass candle holders; Certified Meteorite, 10.91kg, Ni/Fe mass); **ARTWORK** (Judith Mackey Framed Prints; Frame Hunting Hounds Prints; 1830s Steel Engraving; Stone Arch Bridge Print; Maria by Dau Lee Bradley; Woman w/ Bowl by RC Gorman); **Much more. Lots of High End Collectibles. This a partial listing**

For full listing, terms & photos GriffinRealEstateAuction.com

Griffin Real Estate & Auction
Phone: 620-273-6421 Fax: 620-273-6425
305 Broadway, Cottonwood Falls, KS 66845
griffinrealestateauction@gmail.com
ANDY PHIPPS, Auctioneer 620-794-1673
CHUCK MAGGARD, Sales/Auctioneer 620-794-8824
In Office: Heidi Maggard, Linda Campbell

CLINE CATTLE CO.
Private Treaty Sale
Bid-off begins
Saturday, October 29, 2022 @ 2 PM
At the farm, 1879 Bobcat Lane, Frankfort, KS

15 BIG STOUT 20-mos. old Angus, SimAngus, Red Angus & Hereford Bulls

SIRES INCLUDED
Sitz Unmistakable, Hoover No Doubt,
Clines Unanimous, WS All Aboard, RREDS Seneca,
CL1 Domino 7131E



Contact:
Austin & Shenan Cline • (785) 565-3246
Lance & Lynette Cline • (785) 564-1744
www.clinecattlecompany.com

Sell At St. Marys
Sell Or Buy Cattle By Auction STARTING TIME 10:30 AM Tuesdays

We sold 1663 cattle October 11. Weaned steer & heifer calves were in good demand at steady prices, with lower prices on fleshy unweaned calves. Feeder steers & heifers were steady to \$3.00 lower. Cows & bulls were steady.

STEER & BULL CALVES			
2 blk str	318 @ 240.00	63 blk/bwf str	906 @ 180.75
1 blk str	325 @ 235.00	7 w/bwf str	690 @ 177.00
2 blk/char bulls	345 @ 226.00	41 blk str	836 @ 176.50
2 blk bulls	343 @ 223.00	68 blk/bwf str	887 @ 175.00
1 bwf str	220 @ 209.00	7 blk/bwf str	674 @ 173.00
5 blk/sim str	446 @ 196.00	27 blk str	691 @ 173.00
2 blk str	468 @ 195.00	125 blk/bwf str	885 @ 173.00
3 blk/bwf bulls	438 @ 193.00	7 w/bwf str	699 @ 172.50
8 blk/bwf str	509 @ 191.50	6 blk/bwf str	772 @ 171.00
1 bwf str	510 @ 191.00	4 mix str	564 @ 170.00
4 blk/bwf str	413 @ 187.00	6 blk/red str	627 @ 170.00
2 blk str	435 @ 187.00	14 blk str	700 @ 168.00
4 blk/char str	489 @ 185.00	6 blk str	728 @ 168.00
3 blk/red str	368 @ 184.00	23 mix str	780 @ 166.50
3 blk/red str	452 @ 184.00	61 mix str	918 @ 166.50
6 blk str	483 @ 183.00	60 mix str	942 @ 166.00
14 blk/bwf str	543 @ 183.00	31 blk str	955 @ 165.75
4 blk/sim bulls	491 @ 181.00	12 blk str	888 @ 163.50
5 blk/bwf str	435 @ 179.00		

HEIFER CALVES			
8 blk hfr	400 @ 187.00		
3 blk/bwf hfr	385 @ 184.00		
22 blk str	667 @ 192.50	2 blk hfr	230 @ 183.00
10 blk/bwf str	777 @ 187.00	2 blk hfr	410 @ 180.00
2 blk str	553 @ 186.00	1 bwf hfr	340 @ 176.00
5 bwf str	552 @ 184.00	1 blk hfr	465 @ 175.00
72 blk/bwf str	788 @ 183.00	1 bwf hfr	385 @ 174.00
23 blk/bwf str	808 @ 182.50	6 blk hfr	390 @ 169.00
63 blk/red str	836 @ 182.25	4 blk hfr	441 @ 169.00

STOCKER & FEEDER STEERS			
6 blk/bwf hfr	500 @ 167.00	9 blk hfr	554 @ 152.00
7 blk hfr	359 @ 166.00	5 blk hfr	568 @ 151.50
4 blk hfr	450 @ 166.00	7 blk hfr	688 @ 151.50
4 blk/bwf hfr	435 @ 165.00	5 blk hfr	638 @ 151.00
7 blk hfr	469 @ 165.00	11 blk hfr	751 @ 150.00
3 char hfr	327 @ 164.00		
5 blk hfr	532 @ 163.00		
7 blk/char hfr	532 @ 161.00		
6 blk/char hfr	483 @ 159.00		
3 mix hfr	422 @ 158.00		

STOCKER & FEEDER HEIFERS			
16 blk/bwf hfr	628 @ 187.00	1 blk hfr	1195 @ 90.00
9 blk hfr	679 @ 183.75	1 blk cow	1390 @ 89.00
20 blk/bwf hfr	668 @ 179.50	1 x-bred cow	1210 @ 82.00
3 blk hfr	725 @ 174.00	1 blk cow	1575 @ 81.50
10 blk hfr	774 @ 168.00	1 blk cow	1640 @ 78.50
2 blk/bwf hfr	650 @ 166.50	1 blk cow	1420 @ 78.00
7 blk/bwf hfr	737 @ 166.50	1 blk cow	1295 @ 77.00
132 blk/bwf hfr	775 @ 165.75	1 blk cow	1455 @ 76.50
60 blk/red hfr	803 @ 165.00	1 char cow	1390 @ 76.00
12 blk/bwf hfr	580 @ 162.50	1 blk cow	1535 @ 75.50
6 blk/bwf hfr	581 @ 159.50	3 bwf cows	1502 @ 75.00
6 bwf/wf hfr	563 @ 159.00	1 blk cow	1570 @ 74.50
5 bwf/red hfr	641 @ 157.00	1 blk cow	1945 @ 74.00
7 blk/bwf hfr	560 @ 156.00	1 blk cow	1535 @ 72.50
8 blk hfr	588 @ 156.00	1 wf cow	1420 @ 72.00
4 blk/char hfr	564 @ 154.00	1 blk cow	1465 @ 71.00
11 blk hfr	672 @ 153.00	1 blk cow	1210 @ 70.00
		2 wf cows	1328 @ 69.50
		1 blk cow	1285 @ 69.00
		1 limo cow	1715 @ 68.00
		1 blk cow	1300 @ 66.00
		1 blk cow	1150 @ 65.00

BRED COWS & PAIRS			
1 blk cow	1280 @ 64.00	1 blk cow/cf	@ 1160.00
1 blk cow	1205 @ 63.50	3 char cows	@ 1000.00
1 hol cow	1600 @ 63.00	1 blk cow	@ 925.00
2 char cows	1280 @ 62.50	2 blk cows	@ 735.00
3 bwf/blk cows	1300 @ 62.00	1 blk cow	@ 710.00
2 blk cows	1123 @ 61.50	1 blk cow	@ 700.00
1 blk cow	1175 @ 60.00		
1 blk cow	1160 @ 59.50		
1 bwf cow	1355 @ 59.00		
6 red/blk cows	1149 @ 58.00		
1 blk cow	1380 @ 57.50		
1 blk cow	1275 @ 57.00		

BULLS	
1 blk bull	1630 @ 104.00
1 blk bull	1570 @ 103.50
1 blk cow	2070 @ 100.00
1 blk bull	1485 @ 98.00
1 blk bull	1775 @ 94.00

CONSIGNMENTS FOR TUESDAY, OCT. 18, 2022:

- 13 blk cows, 7-8 yrs old with September calves
- 80 blk str & hfrs, 400-500 lbs., vaccinated
- 100 blk str & hfrs, 650-750 lbs., long time weaned, vaccinated
- 29 blk str & hfrs, 700-850 lbs.
- 70 blk red heifers, 725-775 lbs.
- 130 blk steers, 850-875 lbs., Northern origin
- 60 blk steers, 925-950 lbs.
- 61 Angus steers, 900-950 lbs.
- 62 black steers, 700-750 lbs., off grass
- 63 black steers, 800-850 lbs., off grass
- 130 blk steers, 850-875 lbs.

Our CONSIGNMENTS can now be viewed after 12 Noon on Mondays by going to www.grassandgrain.com & logging onto the online subscription

FOR INFORMATION OR ESTIMATES:
REZAC BARN ST. MARYS, 785-437-2785 LELAND BAILEY TOPEKA, 785-215-1002
DENNIS REZAC ST. MARYS, 785-437-6349 LYNN REZAC ST. MARYS, 785-456-4943
DENNIS' CELL PHONE 785-456-4187 REX ARB MELVERN, 785-224-6765
KENNETH REZAC ST. MARYS 785-458-9071

Toll Free Number.....1-800-531-1676
Website: www.rezaclivestock.com
AUCTIONEERS: DENNIS REZAC & REX ARB

Rezac St. Marys, Ks.
Livestock Commission Company, Inc.