

Marshall named to Agriculture, HELP, Small Business, and Energy committees

U.S. Senate Republican Leader Mitch McConnell has named Senator Roger Marshall, M.D., to the Senate Agriculture, Nutrition, and Forestry Committee; the Health, Educa-

tion, Labor, and Pensions (HELP) Committee; the Small Business and Entrepreneurship Committee; and the Energy and Natural Resources Committee for the 117th Congress.

Following a phone call with Republican Leader McConnell, Marshall issued this statement:

"I am honored to be named to these important committees as they give our state a seat at

the table when it comes to protecting the Kansas way of life and tackling the many issues facing our nation," said Marshall. "As a fifth-generation farm kid, someone who has spent many years leading

businesses in a variety of fields, and as a physician, I look forward to adding the Kansas perspective to each of these committees."

Senator John Boozman, Republican Leader of the Senate Ag Committee said, "We are pleased to welcome Senator Marshall to the Ag Committee. He brings a strong understanding of the committee's portfolio, and his appointment ensures that Kansas continues to have a crucial vote in the direction of our nation's agriculture policy. I know Senator Marshall is ready to get to work to help our nation's farmers and ranchers, and we are eager to add his voice to the discussion."

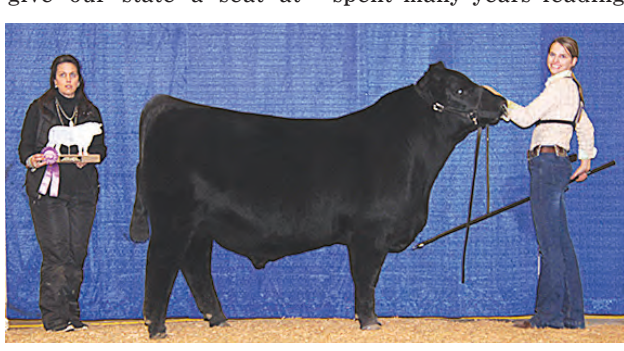
"I want to welcome Senator Marshall to the Energy and Natural Resources Committee," said Senator John Barrasso, Republican Leader of the Ener-

gy and Natural Resources Committee. "His insights will strengthen our committee. I look forward to partnering with Roger as we work to promote America's energy security, economic strength, and environmental stewardship."

"I'm pleased Senator Marshall will be joining the Senate HELP Committee," said Senator Richard Burr, Republican Leader of the HELP Committee. "Senator Marshall brings with him more than 25 years of experience practicing medicine. As we continue to face some of the greatest public health, education, and economic challenges of our lifetime, Senator Marshall will bring a valuable perspective to the Committee. I look forward to working with him as we tackle the most pressing issues confronting our nation."



Hinrichsen Top Secret 013 won grand champion bred-and-owned bull and Kansas grand champion bred-and-owned bull at the 2021 Kansas Angus Futurity Junior Show, Jan. 31 in Hutchinson. Eva Hinrichsen, Westmoreland, owns the March 2020 son of Schilling's R&L Confidential. He earlier claimed calf champion. Greg Walthall, Windsor, Mo., evaluated the 97 entries.



J4 Best In Class 905 won reserve grand champion bred-and-owned bull at the 2021 Kansas Angus Futurity Junior Show, Jan. 31 in Hutchinson. Ella Jordan, Savannah, Mo., owns the December 2019 son of Dameron Best In Class. She first claimed senior calf champion.

Photos by Jeff Mafi, American Angus Association

MANHATTAN

COMM. CATTLE AUCTION

CO. INC. EVERY FRIDAY

1-800-834-1029 **STARTING 10:00 A.M. ON WEIGH COWS**

Toll-Free **FOLLOWED BY STOCKER FEEDERS — 11:00 A.M.**

OFFICE PHONE 785-776-4815 • OWNER JOHN CLINE

Our CONSIGNMENTS can now be viewed after 12 Noon on Mondays by going to www.grassandgrain.com & logging onto the online subscription

For our sale held on Friday, February 5th, steers and heifers offered were mostly selling at steady prices with good demand. Cull cows and bulls sold \$4 - \$6 higher.

STEER CALVES — 425-550 LBS.

Wheaton	11 blk	451@192.00
Lecompton	4 blk	462@190.00
Randolph	6 blk	527@181.50
Wheaton	9 blk	533@176.50
Axtell	5 Cross	430@175.00
Sabetha	9 blk	523@174.50
Lecompton	5 blk	549@161.00

STEERS — 600-900 LBS.

Goff	7 blk	636@155.50
Pomona	6 blk	660@154.00
Randolph	4 blk	607@151.00
Randolph	6 blk	680@150.75
Manhattan	8 blk	661@148.00
Randolph	12 blk	677@146.00
Wamego	8 blk	669@146.00
Goff	10 blk	687@142.50
Council Grove	6 blk	722@140.50
Wamego	24 blk	708@140.00
Sabetha	4 blk	662@140.00
Valley Falls	6 Heref	622@137.00
Council Grove	4 Heref	761@131.50
Council Grove	9 blk	885@125.50

HEIFER CALVES — 375-500 LBS.

St. George	4 blk	465@164.00
Wheaton	7 blk	399@163.00
Wakfield	6 blk	474@163.00
Wheaton	11 blk	475@162.50
Oskaloosa	9 bwf	465@158.00
Lecompton	5 blk	476@148.50
Axtell	7 blk	453@143.00

HEIFERS — 550-825 LBS.

St. George	20 blk	570@149.75
Wheaton	4 blk	565@148.50
Pomona	7 blk	610@146.00
Wamego	7 blk	580@145.50
Alma	60 blk	626@145.00
Randolph	11 blk	622@145.00

Council Grove	6 blk	669@138.50
Axtell	4 Cross	557@137.00
Wamego	32 blk	688@136.25
Manhattan	7 blk	640@135.00
Wamego	16 blk	759@131.00
Wamego	4 blk	786@131.00
Randolph	21 blk	692@129.25
Alma	7 Cross	709@128.00
Wamego	13 blk	722@128.00
Goff	18 blk	703@128.00
Council Grove	6 bwf	825@120.00

COWS & HEIFERETTES — 1,025-1,600 LBS.

White City	1 blk	1135@77.00
Wakefield	1 blk	1045@69.00
White City	1 blk	1350@61.00
Manhattan	1 blk	1185@60.50
Leonardville	1 blk	1580@59.00
Manhattan	1 blk	1270@59.00
Manhattan	1 blk	1210@58.00
Gypsum	1 blk	1155@58.00
Manhattan	1 bwf	1110@57.50
Olsburg	1 blk	1395@57.00
Manhattan	1 blk	1465@56.50
Leonardville	1 bwf	1490@55.50
Alma	1 blk	1560@55.00
White City	1 blk	1340@55.00
Alta Vista	1 blk	1470@54.00
Gypsum	1 blk	1470@54.00
Maple Hill	1 Cross	1110@53.50
Leonardville	1 blk	1375@52.00
Leonardville	1 blk	1485@52.00

BULLS — 1,750-2,150 LBS.

Manhattan	1 blk	2015@93.50
Manhattan	1 blk	2120@92.00
Alma	1 blk	1765@88.50
Gypsum	1 blk	2145@87.00

BABY CALVES

Topeka	1 blk	@450.00
Manhattan	1 blk	@435.00
Axtell	1 blk	@350.00
Axtell	1 Cross	@310.00
Wamego	1 bwf	@235.00

EARLY CONSIGNMENTS FOR FEB. 12

- 75 choice reputation Angus str & hfrs, 600-750 lbs.
- 43 mix str & hfrs, weaned 6 weeks, 2 rds shots, 550-600 lbs.
- 9 gentle Judd Ranch genetics blk replacement quality OCV hfrs, 2 rds shots, poured, pelvic measured, 700-750 lbs.
- 80 blk hfrs grass condition, longtime weaned, shots, 600-650 lbs.
- 128 choice reputation blk str & hfrs, weaned Oct. 25, Spring & Fall shots, 700-850 lbs.
- 50 choice reputation Angus str, 3 rds shots, long weaned, 650-750 lbs.
- 20 choice reputation Angus hfrs, 550-650 lbs.
- 90 Angus str & hfrs, 2 rds Fall shots, 600-750 lbs.
- 43 blk str & hfrs, long weaned, all shots, 600-750 lbs.
- 30 Angus & Simm Angus str, long weaned, 2 rds shots, green, 700-800 lbs.
- 44 choice reputation Angus str & OCV hfrs, long wean, 2 rds shots, 550-700 lbs.
- 17 blk str, 2 rds shots, long weaned, 650-775 lbs.

SPECIAL STOCK COW AND BRED HEIFER SALE

WED., FEB. 17 • STARTING 11:00 AM

BRED 1ST CALF HEIFERS

- 14 first calf Mill Creek Genetics Herf hfrs, bred Mill Creek Blk Angus bulls to start calving March 1.
- 31 choice Montana origin bwf 1st calf hfrs bred to LBW Angus bulls to start calving Mar. 1. All Fall shots including a 1 shot Scourguard.
- 14 big fancy blk 1st calf hfrs, bred Balancer for Mar. 1 calving.
- 14 blk Angus Northern origin 1st calf OCV hfrs, bred Harms Plainview Ranch LBW Blk Angus bull to start calving Mar. 1 for 45 day calving period. Up to date on shots, poured Cydectin, Stay Bred shot given.

1ST CALF HEIFER PAIRS

- 22 Angus & Simm Angus 1st calf OCV hfrs w/ Angus sired Dec.-Feb. calves by side. Hfrs on full vacc program, calves Enforce 3 & bulls banded.
- 7 gentle Red Angus & blk Angus 1st calf OCV hfrs w/ 30 day Red & blk Angus calves by side. Hfrs & calves all had shots.
- 10 choice Red Angus Fall calving 1st calf hfrs with big Red Angus sired Sept.-Oct. calves by side, bred back to Blk or Red Angus bull since Nov 25. Hfrs & calves all worked.
- 10 blk Fall calving 1st calf hfrs with big Sept.-Oct. Angus sired calves by side, hfrs running back with Blk or Red Angus bulls since Nov 25. Hfrs & calves all worked.
- 5 Char cross Fall calving 1st calf hfrs with big Sept.-Oct. Angus sired calves by side, hfrs running back with Blk or Red Angus bulls since Nov 25. Hfrs & calves all worked.
- 10 choice Red Angus & Blk Angus 1st calf hfrs with Red & Blk 60 day old calves by side. Hfrs & calves all worked.

2ND CALF HEIFER PAIRS

- 2 gentle Red Angus & blk Angus 2nd calf OCV hfrs w/ 45 day Red & blk Angus calves by side. Hfrs & calves all had shots.

BRED COWS

- 20 Angus cross cows SS bred Balancer bulls for Mar.-April calving.
- 9 Red Angus cows, 5 yrs, bred to registered Red Angus Son of Redemption to start calving Mar. 10, ScourBos booster 12/22/20, Synathic & Vetrimec wormer October 2020.
- 11 blk Angus Montana origin cows, 3-6 yrs, bred Angus bulls to start calving March 1, all shots and poured.
- 34 blk & Red cows, 8 yrs to BM, bred 4-7 mo.
- 35 blk & Red Angus cows, 4-7 yrs, bred Dale Banks Blk Angus & Mushrush Red Angus bulls to start calving April 1.
- 40 blk & Red Angus cows, 4-6 yrs, bred Blk & Red Angus for Fall calving.
- 22 blk BWF cows, 5 yrs to older, bred Angus & Simm Angus bulls for April-May calving.

BULLS

- 2 March Polled Hereford calving ease bulls, 2 yrs old, 1/2 brothers.

FOR A COMPLETE AND UP TO DATE LISTING, VISIT OUR WEBSITE AT MCLIVESTOCK.COM

RIVER CREEK FARMS 31st ANNUAL "BUILT TO WORK" SIMANGUS BULL SALE WEDNESDAY, FEB. 10 @ 1pm

Selling (85) 18 mo. old bulls, 40 yearling bulls.

Visit RiverCreekFarms.com for catalog and videos; Bid online at DVauction.com

Photography submission contest

Your herd could be showcased in our upcoming 2022 large wall calendar.

We are looking for high quality maximum resolution color images suitable for our large calendar. Submitted images will be judged by our impartial panel of judges. Please send your images as an attachment to manhattancommission@gmail.com. If selected, you will be entitled to pure well earned bragging rights.

Upcoming Special Stock Cow & Bred Heifer Sale Dates • Wednesdays starting at 11:00 AM

2021: Feb. 17 • Mar. 17 • Apr. 14 • May 5

VISIT US ON THE WEB FOR DAILY CONSIGNMENT UPDATES AT WWW.MCLIVESTOCK.COM

<p>JOHN CLINE ONAGA 785-889-4775 Cell: 785-532-8381</p>	<p>BRENT MILLER ALMA 785-765-3467 Cell: 785-587-7824</p>	<p>TOM TAUL MANHATTAN 785-537-0036 Cell: 785-556-1422</p>	<p>BRYCE HECK LINN 785-348-5448 Cell: 785-447-0456</p>
<p>ALAN HUBBARD OLSBURG 785-468-3552 Cell: 785-410-5011</p>	<p>JEFF BROOKS BEATTIE 785-353-2263 Cell: 785-562-6807</p>	<p>DAN COATES BALDWIN 785-418-4524</p>	<p>SAM GRIFFIN BURNS 620-726-5877 Cell: 620-382-7502</p>

MiCrop™ Fungicide powered by F Value™ Technology to launch this spring

MiCrop™ Fungicide Powered by F Value™ Technology will be launched across the United States this spring, targeting corn, soybeans, cereals and rice. MiCrop™ fungicide is an optimized formulation developed specifically for azoxystrobin and propiconazole that delivers enhanced performance and value.

Albaugh's MiCrop fungicide is powered by F Value Technology, which helps deliver micronized active ingredients to help enhance uptake, targeting

disease control and leading to healthier plants to help maximize fungicide return on investment. "Over the past two years, Albaugh has launched a MiCrop fungicide 'Seeing is Believing' campaign, allowing our channel partners to put MiCrop fungicide to the test in commercial field applications. Their results have been excellent," says Chad W. Shelton, Albaugh's Global Director of Innovation Technology. "Allowing our customers and the growers they serve to see the results and impact of Mi-

Crop fungicide firsthand has been an excellent development process." The market has proven both the performance and the value of MiCrop fungicide. Over the past two years, ag retailers and their growers have conducted more than 89 MiCrop fungicide commercial field splits. In these field trials, MiCrop increased cereal yields by 5.9 bushels/acre versus conventional fungicides, enhanced corn yields by 7.9 bushels/acre versus competitive fungicides and untreated checks, and

produced an average increase of 4.3 bushels/acre in soybean yields when compared to competitive fungicides or untreated checks.

"Our focus with the F Value Technology platform is to enhance the performance and value of world-class active ingredients. MiCrop fungicide is a perfect example of that focus," explains Mark Helt, Albaugh's North America Commercial Director. "F Value Technology is Albaugh's innovation platform that allows a strategic focus on identifying technologies around the globe that can be used

in formulation development, that together can enhance the performance of individual fungicide active ingredients."

"MiCrop fungicide represents a unique technology that our channel partners can deliver to their customer base that adds value and enhanced performance on two proven but older active ingredients," adds Andy Bogue, Albaugh's U.S. Director of Sales. "Propiconazole and Azoxystrobin are 40 years and 25 years old, respectively, and MiCrop fungicide is delivering true innovation to give these two-fungicide active ingredients new life in the market."

MiCrop™ Fungicide Powered by F Value™ Technology delivers Innovation, Proven Performance and Enhanced Fungicide Return on Investment and will be available from Albaugh's distribution partners and ag retailers this spring.



Schilling Area 51 won Kansas reserve grand champion bred-and-owned bull at the 2021 Kansas Angus Futurity Junior Show, Jan. 31 in Hutchinson. Kaelyn Schilling, Edson, owns the April 2020 son of Schilling's R&L Confidential. He earlier claimed reserve calf champion. Greg Walthall, Windsor, Mo., evaluated the 97 entries.

Photo by Jeff Mafi, American Angus Association



19TH ANNUAL SALE
SUNDAY, MARCH 7, 2021 • 1 PM CST
SCHAAKE FARMS SALE FACILITY IN WESTMORELAND, KANSAS

70 SIMMENTAL & SIMANGUS BULLS • 40 REGISTERED & COMMERCIAL FEMALES



PRODUCING Quality BULLS
FOR THE COMMERCIAL CATTLEMEN & PUREBRED BREEDER ALIKE

"Since making the switch to Gold Bullion bulls, we have seen a massive improvement in the quality of heifers that we are keeping as replacements for our herd. On the steer production side, we know we can send our calves to the feed yard and with their genetics, know that they will perform at the highest standard. What gives us the most confidence is the families that stand behind their bulls."
JOSH WHITEHILL • KANSAS

"I have been buying bulls from the Gold Bullion Group for many years. The bulls are not overfed. The breeders are very competitive, using the best genetics through AI and ET. I like feeding the bulls together, giving the buyer the opportunity to compare performance."
STAN SEARS • CALIFORNIA

"I purchased one of the most docile bulls you can ask for from the Gold Bullion Group. He loads without a clute - just open the trailer door and he'll get in. His calves grow fast and are easy to work with."
JOHN LOPP • KANSAS

THE QUALITY GOES IN, BEFORE THE BRAND GOES ON

BROOKS SIMMENTALS RALPH: 785-556-0385 WWW.BROOKSSIMMENTAL.COM	MARPLE FARMS TROY: 785-250-0522	MCCRACKEN LIVESTOCK ZACH: 620-384-6176	MID-AM GENETICS RYAN: 785-221-3284	PARSONS LIVESTOCK GARRETT: 632-651-3654	SCHAAKE FARMS SCOTT: 785-456-4949 WWW.SCHAAKEFARMSINC.COM
--	---	--	--	---	--

WWW.GOLDBULLIONGROUP.COM

MAXIMUM IMPACT HETEROISIS


Selling 80+ Feed Efficiency Tested Bulls and Females March 6th in Pawnee Rock, KS.

80% of Bulls in Top 25% CED

42 Bulls in Top 10% BEPD

52 Bulls in Top 10% MB

Scott: 620-786-1369
LovingFarms.com



Our clients do something curious at night: **sleep**

Conterra Ag Capital doesn't just lend capital, we give you confidence and peace of mind.

Our team of lending experts shares your passion for making things grow, and with our variety of lending options and highly competitive rates, Conterra Ag is here to support your financing need — so you can rest easy.

Ag Real Estate Lending

Farm and Ranch Loans

Alternative and Bridge Loans



Start a conversation today:
Luke Schultz, Relationship Manager
785-410-8484
Luke.Schultz@ConterraAg.com
ConterraAg.com



FINANCING AMERICAN AGRICULTURE

JENSEN BROS. Annual Bull Sale

MARCH 4 2021
AT RANCH 1:00 PM CST

Offering 12-18 month old Hereford bulls and 3 Yearling SimAngus™ Bulls

PROVEN GENETICS makes Predictable Genetics

PROVEN GENETICS takes the guesswork out!

PROVEN GENETICS in 8-10 generations of Jensen bred females

PROVEN GENETICS in National Hereford Sire Test



941H
HOMOZYGOUS POLLED LEADER SON
BW 3.7 WW 80 YW 124 REA 0.95 SCHB151
Act REA 16.38 Act Marb 3.16



863H
POLLED LEADER SON
BW 0.9 WW 68 YW 106 REA 0.972 SCHB121
Act REA 15.03 Act Marb 3.45



R Leader 6964

GENOMIC ENHANCED EPD'S SEMEN TESTED
ULTRASOUND DATA AVAILABLE
FREE DELIVERY
REQUEST SALE BOOK TODAY!

Come look ahead of sale!
BULLS available for viewing from now until sale day.

DVAuction Broadcasting Real-time Auctions

Selling **80** Homozygous Polled, Polled & Horned Hereford Bulls

EPDS MEASURE THINGS YOU CAN'T SEE! DNA Enhanced EPDs and actual ultrasound measurement for carcass data.

KEVIN & SHEILA JENSEN Courtland, KS WWW.JENSENBROS.NET
Kevin 785.243.6397 Sheila 785.262.1116 Brady 785.614.1645 Eddie Sandberg, herdsman 765.490.1719

Sen. Moran urging President Biden to keep Trump WOTUS rule

U.S. Sen. Jerry Moran (R-Kan.) joined a group of Senators in introducing a resolution to express support for the Navigable Waters Protection Rule – the Trump administration’s replacement for the Obama-era Waters of the United States (WOTUS) rule.

“Repealing the Trump administration’s Navigable Waters Protection Rule will reinstate burdensome regulations on Kansas farmers, ranchers and small businesses,” said Moran. “This common-sense rule promotes

clean water for our communities and families, while respecting private property rights and providing certainty for landowners. We’ve already seen the damage and confusion caused by the Obama-era WOTUS rule, and returning to that standard is unacceptable.”

In 2015, the Obama administration finalized a rule that expanded the definition of the Waters of the United States, creating confusion and burdensome red tape for the agriculture industry and many others. Moran cosponsored

legislation in September 2015 that would have nullified the Obama administration’s rule. After passing both the House and Senate — with bipartisan support — the bill was vetoed by President Obama.

The Trump administration proposed a new rule to replace the Obama administration’s 2015 WOTUS rule that provided much-needed predictability and certainty for farmers by establishing clear and reasonable definitions of what qualifies as a “water of the United States.” The new Nav-


igable Waters Protection Rule was finalized last year.

President Biden signed an executive order that would roll back the Trump administration’s executive order which originally began the process of rescinding Obama’s WOTUS rule.

Sen. Moran joined 25 of his colleagues on this resolution, including Senators Joni Ernst (R-Iowa), Chuck Grassley (R-Iowa), Deb Fischer (R-Neb.), Ben Sasse (R-Neb.), Roger

Marshall (R-Kan.), Shelley Moore Capito (R-W.Va.), Kevin Cramer (R-N.D.), John Hoeven (R-N.D.), Mike Rounds (R-S.D.), James Risch (R-Idaho), John Barasso (R-Wyo.), Cynthia Lummis (R-Wyo.), Steve Daines (R-Mont.), Dan Sullivan (R-Alaska), Josh Hawley (R-Mo.), Roy Blunt (R-Mo.), Thom Tillis (R-N.C.), John Boozman (R-Ark.), Tom Cotton (R-Ark.), Cindy Hyde-Smith (R-Miss.), Roger Wicker (R-Miss.), Rand Paul (R-Ky.), Mike Crapo (R-Idaho),

Mike Braun (R-Ind.), and Ron Johnson (R-Wis.).



GSI
GRAIN BINS
ALL SIZES AVAILABLE
Hopper Bins Available
FINANCING AVAILABLE
Harder AG PRODUCTS
West Highway 50
PEABODY, KANSAS 66866
Phone 620-983-2158
www.grainbinsusa.com

SUBSCRIBE TO GRASS & GRAIN 785-539-7558
or online at: grassandgrain.com

HERINGTON LIVESTOCK COMMISSION CO.

CATTLE SALE EVERY WEDNESDAY: 11:30 AM

2/3/21 SALE RESULTS

COWS & HEIFERETTES		BULLS		HEIFERS	
Marion, 1 Red	1485@68.00	Burdick, 1 Red	1150@56.50	Marion, 19 blk	868@129.00
Marion, 5 blk	1960@63.50	Marion, 1 blk	1290@56.00	Herington, 62 blk	893@127.75
Hope, 1 blk	1205@63.00	Herington, 1 blk	1105@55.25	Ramona, 61 blk	872@127.60
Marion, 1 blk	1390@62.50	Marion, 1 blk	1010@55.00	Lncnlvle, 58 blk	911@125.60
Cncl Grve, 1 blk	1415@62.00	Cedar Point, 1 blk	1155@55.00	Lncnlvle, 57 blk	917@125.00
Tampa, 1 blk	1585@61.50	Marion, 1 blk	960@54.50	Ramona, 58 blk	997@124.50
Lncnlvle, 2 blk	1665@61.50	Marion, 1 blk	1345@54.50	Hope, 5 blk	900@123.50
Cncl Grve, 1 blk	1335@61.00	Marion, 1 blk	1450@52.50	Wilsey, 7 blk	946@121.50
Lehigh, 3 blk	1383@60.50	Lncnlvle, 1 Red	1085@52.50	Jnctn City, 10 mix	1025@121.00
Cncl Grve, 1 blk	1445@60.50			Tampa, 50 mix	1115@112.00
Cncl Grve, 1 blk	1370@60.50				
Marion, 2 mix	1500@60.50				
Cncl Grve, 1 blk	1415@60.00				
Cncl Grve, 1 blk	1500@59.50				
Tampa, 4 blk	1401@59.00				
Cncl Grve, 1 blk	1660@59.00				
Cncl Grve, 1 blk	1340@58.50				
Cncl Grve, 1 blk	1225@58.00				
Burdick, 1 Red	1410@57.50				
Hillsboro, 2 blk	1695@57.25				

Our Consignments can now be viewed after 12 Noon on Mondays by going to www.grassandgrain.com & logging onto the online Subscription.

View Our Auction Live at LMAAUCTIONS.COM
KFRM AM 550, Every Wed., 8:00 a.m. • Barn Phone 785-258-2205
www.HeringtonLivestock.com

Manager: Tracy Ediger, 785-366-6645
Dave Bures - 402-766-3743 • Bob Kickhafer, Cell - 785-258-4188
Tim Wildman, 785-366-6152

LAND AUCTION
105.79± AC of Irrigated Farmland / Hunting Land on Republican River
Tuesday, March 2nd @ 7:00pm CST
Auction Held at Scandia Community Center

83.78± AC of FSA Cropland • 79.21± AC Irrigated • 22.01± AC of Wooded Land
3/4-Mile of Republican River Frontage • Possession Upon Closing

Seller: Windmill Real Estate, LLC
Legal: Portions of the E/2 of S36, T2S, R5W
Directions: From Scandia drive North 3-miles. Turn West on 'M' Road and drive 2-miles. Turn South on '70' Road and drive a 1/4-mile until you see the Subject Property.
For more details, please visit our below website!

Eric Neilson
Broker / Owner
785-556-5727
www.milestoneks.com

61st Annual Bull & Female Sale
Feb. 27, 2021 ~ 1:00 p.m.
at the Farm near Burchard, NE

TEGTMIEIER POLLED HEREFORDS
Clarence Tegtmieier & Sons, Inc.

The Brand to Follow for **TOTAL PERFORMANCE**

Selling ~
40 Polled Hereford Bulls
35 Bred & Open Females

Excellence in Polled Genetics

Register to bid online
Live Auctions TV
Videos & More Photos on our website
www.tegtmeierpolledherefords.com

Tegtmieier Polled Herefords
Russ Tegtmieier - 402.865.5805 h / 402.335.0470 c
rtegtmeier@diodecom.net
71556 609 Ave. • Burchard, NE 68323

Premium Genetics Bull Sale
Saturday March 13, 2021 ~ 1:00 pm.
Wamego, KS ~ Kansas Bull Development
Simmental | Sim Angus™ | Red Angus | Angus

 Yearling PB Simmental ASA# 3745415	 Fall Angus AAA# 1990600
 Yearling 1/2 SimAngus™ ASA# 3745405	 Fall Angus AAA# 19918400
 Yearling 1/2 SimAngus™ ASA# 3745407	 Fall Bred Angus AAA# 195817476
 Yearling 3/4 Sim Angus™ ASA# 3745428	 Fall Red Angus RAAA# 4357807

20 Simmental/SimAngus™, 20 Angus and 10 Red Angus Bulls

Dikeman Simmental
Manhattan, KS
www.dikemansimmental.com
Michael Dikeman
(785) 770 -2977
mdikeman@ksu.edu

Huninghake Angus Ranch
Frankfort, KS
www.huninghakeangusranch.com
Randy Huninghake
(785) 556-0319
huninghake.angus@gmail.com

DVAuction
Bredstock Real-Time Auctions

KEY FEEDS
Fourth & Pomeroy & Assoc.

“Key Feeds has been advertising in the Grass & Grain for 20 years in the same location...”

...We get more responses than other advertising mediums we have tried. We get weekly inquiries from customers and prospects.”

~ Joe Ebert, Fourth & Pomeroy VP ~

“Hands down, the greatest use of advertising dollars.”

~ Zita Milligan, Fourth & Pomeroy Co-Owner ~

You could also be reaping the benefits of **Grass & Grain advertising!**

Don't hesitate, call today:
785-539-7558

Or stop by to talk to one of our advertising representatives:

Since 1954

GRASS & GRAIN

1531 Yuma St. • Manhattan, KS 66502

GRASS & GRAIN DIRECTORY

Custom Manure Hauling & Spreading
Big to Small Jobs!
Chore-Boyz Services
913-636-1099

Blue Valley Drilling, Inc.
Water Well Drilling & Service
Family Business Over 70 Years!
CONTACT ERIC STRADER
785-363-7353

HALDEMAN WELL DRILLING & PUMP SERVICE
785-539-9295
MANHATTAN, KS

D. ROCHE FENCING INC.
QUALITY BUILT FENCES
DON ROCHE
785-292-4271
FRANKFORT, KS

AUCTIONEERS

WISCHROPP AUCTIONS

SPECIALIZING IN ON-SITE AUCTIONS OF ALL TYPES
Farm - Household - Real Estate - Etc.

Miller & Midyett Real Estate
Wayne Wischropp & Michele Loeffler, Realtors

Wischropp Auctions
Wayne & Marcia Wischropp, Owners
www.wischroppauctions.com
Call: 785.828.4212
Like Us On Facebook

YOUR REAL ESTATE AUCTION TEAM!

Crossroads Real Estate & Auction LLC

TERRI HOLLENBECK, Broker
ANDREW SYLVESTER, Auctioneer
BILL DISBERGER, Coordinator
JESSICA HOLLENBECK, Office Mgr.
www.kscrossroads.com
785.539.2732

purple wave auction

BUY & SELL
Ag Equipment
Const. Equipment
& Vehicles
1.866.608.9283
purplewave.com

Farms AMERICA REAL ESTATE

Working for **FARMS AMERICA** to SELL
Farm Ground & Rural Property.
Kansas Associate,
JIM HOLLINGER
goatjim71@gmail.com
or call 620-257-8148

GAVEL ROADS ONLINE AUCTIONS

GAVEL ROADS IS THE PLACE TO GO TO BUY AND SELL EQUIPMENT.
785.587.7737
www.gavelroads.com
READY ... SET ... SOLD!

ARMSBID.COM
Kull's Old Town Station invites consignments for our Spring, Summer & Fall Auctions. If you have 1 or 1,000, we'd like to talk to you.
We will also buy collections or individual guns.
Dan@ArmsBid.com or
785-862-8800 • 800-466-5516
Topeka, Kansas

Pearl Real Estate & Appraisal Svcs., Inc.



MIKE PEARL Broker & Appraiser
• Auctions
• Farm Real Estate Sales & Appraisals
602 W. Bertrand, St. Marys, KS 66536
Office: **785.437.6007**
Cell: **785.256.5174**
www.pearlrealestate.org
pearlre602@gmail.com

JEFF RUCKERT, OWNER/BROKER/AUCTIONEER

2049 Ft. Riley Lane
Manhattan, KS
785-565-8293
www.ruckertauctions.com

RUCKERT REALTY & AUCTION

Homes, Farms, Ranches, Land, Auctions & Recreational Property

GENE FRANCIS & ASSOCIATES REAL ESTATE BROKERS & AUCTIONEERS

Serving all 105 Kansas counties with more than 30 years of experience.
Offices located in Wichita, Manhattan & Anthony.
Call us today at
316.524.8345
www.genefrancis.com
A bid above the rest!



YOUR AD COULD BE HERE!
Grass & Grain
• 785-539-7558

CATTLE

ANGUS BULLS

18 to 24 Months Old
Also Yearlings
• Good maternal traits
• Gentle disposition
• Calving ease
• Priced to sell

BUSS ANGUS
Leonardville, Kansas
C: 785-410-3006
H: 785-293-4444



ANGUS BULLS
Yearling to 2 year olds
Performance Data Available
Good Maternal Traits
Fertility Tested
Continuously raising Angus cattle for 71 years.

Vering Angus
Greg Vering
Marysville, KS
785-562-7164 Cell
785-562-3988 Home

Rinkes Cattle Co.

For Sale Private Treaty:
REGISTERED ANGUS BULLS
150K enhanced EPDs
Performance Tested, Fertility Tested, Free Delivery, Guaranteed Sight Unseen Purchases.
Excellent Disposition.
Priced to sell!!
HOLTON, KANSAS
785-845-5272 • 785-817-2328
www.rinkescattle.com
rinkescattle@gmail.com

Hereford Bulls

Yearlings
Complete Performance Data
Semen Checked
Females
Call us for your needs



Gustafson Herefords
7477 Davis Creek Rd
GUS GUSTAFSON & FAMILY
Junction City, KS
Gus Gustafson
785-238-7306

LAFLIN ANGUS PRODUCTION SALE
Saturday, March 6 High Noon
at the Ranch, Olsburg, KS
Selling

• **100 BULLS**
• Powerful strong beef bulls
• All performance information, EPDs and ultra sound carcass data
• **40 FEMALES**
• Show heifer prospects
• Bred heifers
• Fall cows and calves
• Donor cows

Celebrating 120 years of Registered Angus cattle

Laflin Ranch
Olsburg, KS
785-587-5852
785-468-3529

JENSEN BROS. Hereford Bull Sale



March 4, 2021 1 PM at the Ranch

Online bidding register with DVAAuction.com

SELLING: 80 BULLS
Homozygous Polled, Polled & Horned Herefords, SimAngus

Proven Genetics makes Predictable Genetics
EPD's measure things you can't see.

DNA Enhanced EPD's and actual ultrasound measurements for carcass data.

Kevin Jensen
785-243-6397
Sheila Jensen
785-262-1116
jensenks@courtland.net
jensenbros.net

CATTLE

HEREFORD BULLS



Good bulls with balanced EPD's, practical development, good disposition & eye appeal.

Oleen Cattle Co.
Falun, KS
GLENN CHUCK
785-668-2368 785-668-2454

SWINE

SWINE EQUIPMENT
Buildings — Ventilation
Flooring — Feeders
Waterers — Heaters
Crates — Nursery Equip.
K & N Swine Systems

RICK HENRY
785-336-2130
SENECA, KANSAS

HORSES

BUYER FOR ALL TYPES OF HORSES. Call Charlie, 785-556-5740.

LIVESTOCK EQUIPMENT

3 FEED-KING 2-TON portable calf creep feeders, \$1750. 785-799-4134.

HOLD 'EM FENCE Company
barbed wire, welded continuous fence, pipe, custom tubs, gates, alleyways. Cell 785-313-4552, <http://www.holdemfence.com>

WINTER 50% OFF SALE ON Tire Water Tanks & Feeders. **WHILE SUPPLIES LAST!**
endurobrandlivestock.com
785-231-8397

CATTLE FENCE AND EQUIPMENT

Cont. fence, posts, gates, cable & pipe
Bunk & hay saving feeders (50% less)
Squeeze & loading chutes, alleys
Red Rhino hay and gooseneck trailers
Corral design. Customized work.

Lowest Prices, GoBob Quality - Always!

855-880-7964 GoBobKS.com

4S LAND & CATTLE CO., LLC

Bennington, KS
785-452-8498

Quality Structural Pipe
in all sizes: 2 3/8", 2 7/8", 3 1/2", 4 1/2", 7"
Sucker rods also available! Free delivery on semi load!
- Call For Pricing -



Making tough jobs easier
Luco Mfg. Co

• **HYDRAULIC CHUTES**
• **WORKING CIRCLES**
• **CAKE FEEDERS**
• **CONTINUOUS FENCING**
• **PANELS & GATES**

See us at www.lucoinc.com
Or call toll free:
1-888-816-6707
PO Box 385
Strong City, KS 66869

FEED & SEED

LARGE PRAIRIE ROUND bales. Weighing 1200# with net wrap. 4x5. Call for pricing. 785-215-5310.

35 ROUND BALES CRP. Put up early December. \$30 per bale if you take all. You pick up in Abilene, Kansas.
Contact Bill @602-390-4930

FEYH FARM SEED CO
Alma, Kansas
Native Grass Seed
Wildflowers
Smooth Brome Grass
Erosion Control Products
Cover Crop Seed
866-765-3415
Nativeseed@Kansas.net
www.FeyhFarmSeed.com

WANTED DAMAGED GRAIN

We pay top dollar for damaged grain. Trucks and vac's available. Immediate response anywhere.
Pruess Elevator, Inc
1-800-828-6642

FEED & SEED

ALFALFA BIG ROUND bales, net wrapped, 1600-1700# per bale. 785-577-6546.

BIG ROUND BALES alfalfa, net wrapped, 1200-1400 lbs. Can deliver. 785-466-1323.

BIG ROUND NET WRAPPED straw bales for sale, \$25/bale. 785-738-0102.

BIG ROUND STRAW BALES \$17/ bale, \$34/ ton. 620-924-5244.

BROME/PRAIRIE HAY, round bale 1050#, 2020 hay. 620 726-5877.

2019 BROME BR NET, \$65/ton. 2020 brome, BR net, \$75/ton. 785-221-8572.

30 BIG ROUND ALFALFA bales, approx. 1600 lbs. Call 785-632-0305.

PRAIRIE HAY: 3x3 BIG squares. Scranton. 785-249-3303

BROME SMALL SQUARES. excellent, \$160/ ton. Prairie small squares, excellent, \$135/ton. Emporia, 620-794-4293.

PASTURE

LOOKING FOR LONG TERM Summer grass for Rinkes Cattle. 785-817-2328

LOOKING FOR SUMMER pasture. Stockers or pairs. 620-382-5412.

NEEDED: GRASS FOR 30-100 head spring calving pairs. Will pay premium for good grass. 785-747-7155

NEEDING PASTURE FOR lease, summer grass, 6 cow pairs, near Junction City/ Manhattan area. 785-477-4125

PASTURE WANTED 300-350 pairs May 1st-October 2021. All homeraised cattle. Please call 208-308-6466

LOOKING FOR PASTURE for 2021 season, can be with or without care. Docile cattle used to rotational grazing and can be moved easily. Call or text Glenn at 785-458-8282

NEEDED: Pasture for 2021 grazing season for DRY Fall calving cows. Up to 640 acres.

BJ Angus Genetics, Manhattan, KS.
Please call 785-532-9777 or email john@bjangus.com

REAL ESTATE

Farm Land For Sale - Ready for 2021 Planting Season Seneca, Kansas

Approximately 545 acres (+/- 514 tillable acres) — \$6,800/acre

Includes 2 Ponds, Barn, Rural Water and Electric available

Section 9, Adams Township, Nemaha Co., KS

For more information, visit www.farmks.com or call (785) 409-5303

REAL ESTATE

170 ACRES FARM/PASTURE land, surveyed. Springs, pond, good 5 & 6 wire fences. Excellent deer hunting. Blaine, Hwy. 99 access. \$2700/acre. 785-630-0621.

Barber County
1182 acres in the Gypsum Hills area close to Medicine Lodge. Rolling terrain with abundant wildlife and excellent natural grasses. Fenced and cross fenced. Several ponds, some Spring fed. \$2,713,000.

Call Jamie Lonker
620-213-0730

G&A Real Estate, INC. Dolly Anderson, Broker
785-532-8801
Manhattan, Kansas
dolly@gandarealestate.com

FARM & RANCH

Land For Sale
Summer Co.- 60 acres all gently rolling crop land East of Caldwell. Call Chris 493-2476.

Summer Co.- 158 acres gently rolling crop land near East of Caldwell. Call Chris 493-2476.

Saline Co.- 21.5 acres with 22 acre railroad lease. 37.5 acres cropland South of Brookville. Call Chris 493-2476

Ottawa Co.- 10 Acre Building Site & 20 Acre Building Site Northwest of Bennington on blacktop. Call Chris 493-2476

Farm & Ranch Division Of:

COLDWELL BANKER

Antrim-Piper Wenger Realtors®
631 E Crawford Salina KS
www.cbsalina.com
1-800-276-3641

© 2019 Coldwell Banker Real Estate LLC. All Rights Reserved. Coldwell Banker is a registered trademark licensed to Coldwell Banker Real Estate LLC. An Equal Opportunity Company. Equal Housing Opportunity.

Let us know!
Contact Kevin to update your Grass & Grain subscription:
agpress3@agpress.com
785-539-7558
1531 Yuma St.,
Manhattan, KS 66502



New Address?

SOLD

Let us know!
Contact Kevin to update your Grass & Grain subscription:
agpress3@agpress.com
785-539-7558
1531 Yuma St.,
Manhattan, KS 66502

CATTLE

DD ANGUS
SENECA, KS

Private Treaty
18 Month Angus Bulls
AI Sired
Registered
Calving Ease
Gentle Disposition
P.I. Negative

David J. & Doris,
Daren Ronnebaum
785-294-1511

CATTLE

SV
SMOKY VALLEY
Angus

Yearling Registered Angus bulls, AI sired, performance tested, carcass ultrasound, genomic enhanced EPD's, semen checked & guaranteed.
Lindsborg, KS
785-227-5414



"The Commercial Man's Kind"

Excellent selection of Polled Hereford And F1 Black Baldy 12-18 Months old Bulls
Also, 2 year old Polled Hereford Bulls

Ready to go to work for you - Fertility Tested & Delivered-

Valek Farms
Mick: 785-732-6637
Cell: 785-527-1049
Bill: 785-527-1033

RED & BLACK ANGUS BULLS



★ Yearling & 18 Month Old Bulls
★ Calving Ease with Great Growth
★ Performance Data Available
★ Good Maternal Traits & Great Disposition
★ Reasonable Prices

★ Bring this Ad - Receive \$50 Discount

Randy Hunninghake
Frankfort, KS
785-556-0319 Cell
785-292-6019 Home

HORIZON FARM & RANCH REALTY, LLC

1-888-825-1199
www.horizonfarmranch.com

AG LAND

NEW LISTING! 46 Ac +/- Creek Bottom tillable @ Smolan. Call Derek!
NEW LISTING! 80 Ac +/- Tillable @ Wisley. Call Lucas!

* 300 Ac +/- Tillable on Solomon River @ Verdi. Call Ray!
* 320 Ac +/- Pasture E. of Bennington. Call Ray!

* 160 Ac +/- Tillable/Pasture at Junction City. Seller is Licensed Real Estate Agent. Call Ray!
* 160 Ac +/- Pasture NW of Lindsborg. Rural water and power in place.

* 296 Ac +/- Tillable South of Abilene. Call Ray! - **UNDER CONTRACT!**
* 640 Ac +/- Pasture NE of Minneapolis - **UNDER CONTRACT!**
* 160 Ac +/- Tillable @ Geneseo - **SOLD!**

MORE LISTINGS ON OUR WEBSITE!

*Auctions *Private Treaty Sales *Value Assessments
Ray Swearingen Broker/Owner... 785.452.8498
Lucas Hamm... 785.366.3580
Ty Bryant... 785.366.0261
Billy Randle... 785.479.1152
Derek Isaacson... 785.452.0566

Rachelle Swearingen... 785.452.5115
Brad Budden... 785.280.0915
Sheila VanWinkle Corn... 785.280.3564
Samantha Swearingen... 785.577.9878
Clint Heller... 785.545.5737

GRASS & GRAIN CLASSIFIEDS

FOR ALL YOUR ADVERTISING NEEDS
785-539-7558

AUTOMOTIVE



2006 GMC 3500 Allison Automatic, Duramax Diesel, New Farm Aid Mixer *Several Daycabs available Feed Mixers and Manure Spreaders Kuhn Knight, new & used Belleville, KS*
800-536-2293



MIDWAY MOTORS SUPER CENTER
 McPherson, KS
 Hutchinson, Kansas • Hillsboro, Kansas
 Newton, Kansas

2017 Chevy Silverado 2500 HD crew High Country 4x4, 6.0 gas, loaded, 72k mi.
 2015 Chevy Silverado 3500 HD crew LTZ 4x4, 6.6 diesel, loaded, 69k mi.
 2019 Ford F250 XL crew, 4x4 diesel, auto, 47k mi.
 2017 Ford F350 crew Platinum 4x4, diesel, loaded, like new, low miles, 6k mi.
 2019 Ram 2500 Big Horn, crew 4x4 diesel, auto, 49k mi.
 2019 GMC Sierra 2500 HD Denali crew 4x4, diesel, loaded, 8k mi.

Ask for Kris Hanschu
 krishanschu@midwaymotors.com
 620-755-2824

TRAILERS

CIRCLE D
 LIVESTOCK & HORSE TRAILERS
FLATBED TRAILERS
 • 1-800-526-0939 •
 www.circle-dtrailers.com

Elite Aluminum Stock Trailers
 Titan — Sharp
 Your Trailer Super Store!
Mid-Plains Equipment
 E. Hwy 30 & 10, POBox 2526 Kearney, NE 68848
 Delivery Available
308-237-5810
 www.midplainsonline.com

Blue Valley Trailers
 Waterville, Kansas







HAYLINER - Bale Buzzer

- New Trailers
- Used Trailers
- Trailer Repair

See used at
 bluevalleytrailers.com
785-363-2224
1-866-368-4826



BOB'S TRAILER SALES
 Pomona, Kansas
785-418-2227
 www.bobstrailersales.com
 Circle-D, Elite, Travalum, Travalong, Bulldog, Ironstar, Titan

B&W Hitches
 Turnover ball: \$595
 Free Installation!

- 2021 14' hydraulic dump trailer, two 7k axles ...\$8,000
- 2021 Utility 18+2, two 7k axles\$4,285
- 2021 Travalum 24' stock trailer\$16,200
- 2021 Circle D stock trailer, 20'\$8,500
- 2021 Circle D 24', Full cleated floor, bull pkg, loaded\$11,250
- 2021 Circle D 24' stock\$9,500
- 2021 Elite 30' 10k axles gooseneck flatbed... \$9,900
- 2021 Elite 25', 2-7k axles Gooseneck flatbed\$7,100
- 2021 Elite 25' 10k axles Gooseneck flatbed\$9,100
- 2021 Elite 32' 10k axles Gooseneck flatbed ...\$10,250

All Elite flatbed trailers low profile and torque tube, dual jacks and toolbox.

TRAILERS

1981 DOONAN HOPPER, 42' long, 96" wide, good brakes, tires, tarp. 785-654-3804, 785-224-5106. Burlingame, Ks. \$6,500.

Trailers 4 U
785-292-4166
 Frankfort, KS

 www.trailers4u.com

DONAHUE
 When There's Work To Do...

DONAHUE!
1-800-457-7406
 www.donahuetrailers.com

MACHINERY

USED IMPLEMENTS —
 2002 8182 White Planter 12 row & fertilizer
 2014 9250 Gleaner Draper 35'
 2015 S78 Gleaner
 1998 Gleaner R72
 Gleaner 400 30' rigid
Call us for your AGCO part needs!



AGCO ALLIS WHITE EQUIP. GLEANER HESSTON MF • GEHL DIXON HUSQVARNA

Kuhlman Impl.
 LINN, KANSAS
785-348-5547

SALVAGING COMBINES
 N5, N7, L, L2, M, F, G, C, CII, All, A&E, K Gleaner. 6620, 7720, 8820, 7700, 6600, 4400, 3300, 105, 95, 55, JD, 915, 1480, 1460, 1420, 815 IHC. 860, 760, 750, 510, 410, 300 Massey. Several black & orange Gleaner corn heads.

Jack Boyle
 Vermillion
 785-382-6848 785-564-0511

Case & IH Tractor Salvage
 Case 300's thru 2096
 IH 460's thru 5488
 Over 1000 Tractors on shelf
 New & Rebuilt parts for all brands of tractors/ combines

Want to buy Case & IH salvage tractors

Elmer's Repair
 CENTRALIA, KS
 785-857-3248
 www.elmersrepair.com

BERG REPAIR
 14200 Godlove Rd.
 Westmoreland, KS
785.457.3534



Winkel Calving Pen



Net wrap & twine available.
NEW EQUIPMENT
 • 504R signature baler
 • VR1022-1224 wheel rakes
 • BPX 9010 Processor
 • Portable Corral
 • BPX 9000 Bale Processor
 • MC 3700
 • Perfect Tree Saw
 • 1710 Tedder
 • 6650 Rancher
USED EQUIPMENT
 • 504M classic
 • R2800 Rake **SOLD**
 • R2300 Rake
 • 665 with net
 • RC 9120 mower
 • TM850 Mower Demo

NEW TRACTORS
 Kubota M7-152 PS, MFD, ldr.
 Call for lease specials
 Kubota M6-111 MFD w/ ldr.
 Kubota M5-111 MFD w/ ldr.

USED TRACTORS
 2018 Kubota L5460 HSTC cab, ldr
 2018 Kubota L4701 HST w/ ldr
 2002 Kubota BX 2200 tractor w/ mower

NEW CONSTRUCTION
 Kubota SVL 95-2 compact track ldr
 Kubota SVL 65-2 compact track ldr
 Kubota U35-4 mini excavator
 Kubota KX 057-4 mini excavator

USED IMPLEMENTS
 2013 Bush Hog 2815 flex wing mower



McConnell Machinery
 1111 E. 23rd Lawrence, KS
785-843-2676
 Evenings
785-979-2271
 www.mcconnellmachineryco.com

MACHINERY

GLEANER R62 COMBINE, Cummins engine with 3450 hrs. and 2440 separator hours. RWA, shedded. 785-632-0612.

Guaranteed Used Truck
 Tires, most sizes.
GeeTire.com
 Rossville, KS.
785-231-8397

Gleaner Combines
 '98 R62 Cummins \$29,500
 '95 R62 Cummins \$19,500
 '81 L2\$9,500
 '81 M2 RWA\$8,500
 825 Flex Head\$8,500

EZ Trail Gravity Wagons, Grain Carts, and Header Trailers.

Great Plains Tillage Tools

81 Farm Eq. Service
 McPherson, KS 620-241-3100
1-800-357-3101
 www.81farm.com

MACHINERY

CLAAS USED FORAGE HARVESTERS & HEADS
 (5) '18 CLAAS 980 FR. \$270,000
 (4) '17 CLAAS 980 FR. \$210,000
 (2) '15 CLAAS 980 FR. \$200,000
 (3) '14 CLAAS 970 FR. \$165,000
 (2) '14 CLAAS 980 FR. \$180,000
 (4) '13 CLAAS 980 FR. \$150,000
 Great selection of CLAAS Orbis 750 Corn Heads From \$20,000

TRACTORS
 '12 Massey Ferguson 8660\$90,000
 '89 Case 9150\$25,000

COMBINES
 '16 Gleaner S78CALL
 '11 Gleaner S67\$80,000
 (2) '08 Gleaner R65CALL
 '03 Gleaner R65\$65,000
 (2) '97 Gleaner R62\$20,000

WINDROWERS
 '15 Massey Ferguson 9870\$105,000
 '14 New Holland H8040\$65,000
 '13 New Holland H8080\$70,000

MISCELLANEOUS
 '13 Great Plains 3610\$40,000
 '12 John Deere 692\$55,000
 '11 White 8772\$25,000
 Flexicoil 3450\$28,500
 Jantz Trailer\$5,000
 Krause 4991\$7,500
 John Deere 9400\$18,000
 John Deere 9300\$2,500
 AGCO 400\$4,500



Kalvesta Impl. Company, Inc.
 620-855-3567
 KALVESTA, KS 67856
 www.kickalvesta.com

- '14 Cat 299D, 996 Hours, C/H/A, H. Flow
- '06 Case 430, 1700hrs, Open Cab
- '05 New Holland LS180.B, Open, 3100 Hours
- '00 Deere 260, 4300hrs, Open Cab
- '98 Bobcat 743B, 1800hrs, Open, Kubota Diesel
- '96 Bobcat 753, 3200hrs, Open, Kubota Diesel
- (2) '15 Cat 259D's, C/H/A, Warranty, 2-Spd
- '17 Case SR175, Open Cab, 760 Hrs
- '15 Deere 333E, 1850 Hrs, C/H/A, Wty \$41,500
- New Renn 1020C Grain Bagger.....\$25,900
- New Renn RMC30 PTO Roller Mill.....\$29,500

MACHINERY

JD 48 LOADER, 6' BUCKET; GB 800 loader, 6' bucket; 5-ton Co-op bulk bin. 785-280-1698.

PAIR OF 18.4X38 rear tractor tires. 1/4 tread, sound carcass and tubes. 785-632-3084 or 785-632-1422.

GRASS & GRAIN
 Place your Classified Ad
 ONLINE at:
 grassandgrain.com

Tire Town Inc.
 20 8x38 New\$825
 340/85 R28 New\$485
 520 70R30 Buffed\$700
 480 70R28 Buffed\$500
 420 85R34 Used 70%\$300
 520/85R42 80%\$800
 7 184x38 10P New\$525
 600/65 R28 New\$1,000
 9 360/70R28 Buffed\$325
 710/75 R42 Buffed\$1,600
 23 R30 overstock\$1,100
 184x34 New\$480
 800/70 R38 Buffed\$2,600
 380/90 R46 80.00\$750
800-444-7209 800-451-9864
913-441-4500 913-682-3201



New Equipment
 604R Premium Baler
 604N Baler
 605N Baler
 504R Signature Baler
 R2300 Twin Rake
 VR1224 12 Wheel Rake
 4' & 5' Net Wrap & Twine

Used Equipment
 605 Super M Baler
 R2300 Rake

Schuler Feed Wagons
Custom Inline Bale Wrapping

Wertzberger Ranch Equipment LLC
 Alma, KS
 785-765-3588

NEW Rakes: VR1428

USED Balers: 6- 605SM, 5- 605N, 2- 605SM corn stalk, 1- 504N, 4- 605M, 1- 604M, 1- 504SI, 1- 6650 Rancher, 1- 6650 Rancher. Rakes: 1- R2800, 2- R2300, 1- VR1224

LARGER BALE FORKS
SPRING STEEL AVAIL.
METAL

ROUND SQUARE TUBING
ANGLE CHANNEL & FLAT
 2 3/8", 2 7/8", 4 1/2" pipe
WELDING SUPPLIES
 Oxygen C125 & acet. Bottles for sale
 Welding rods & wire
 Top & bottom belts for all balers
 Twine 4' & 5' netwrap
 Portable panels, Feed Bunks & Round Bale Feeders

Vermeer Sales & Leasing
 LEONARDVILLE, KS 66449
 785-293-5583
 785-293-2542

MACHINERY

PICKUP FLATBED, regular length pickup. 785-446-3617.

RHINO SPHD POST HOLE digger (used little), excellent. 785-231-4461. \$1000 CASH.

FOR SALE: SPREAD-ALL 16 ton manure spreader, good condition. 316-737-7121.

WANTED: REAR TRAILER hitch for JD small square baler. 785-826-3261.

WANTED: TD-15C DOZER for parts or operational. 620-365-9437.

3 FEED-KING 2-TON portable calf creep feeders, \$1750. 785-799-4134.

CASE IH 2240 SPRAYER, 660 gallon tank, 80 ft booms, AIM command, excellent condition. 913-370-2909

2002 CHEVY 2500, BESLER 3100 bale bed, engine knock, \$3750. 1979 Chamberlain 40' hopper trailer, \$9400. 10"x71" Westfield auger, swingout, \$4500. 785-221-8572.

SENECA IMPL. CO.
 Hwy. 36 West
 SENECA, KANSAS

JUST IN:
10', 12', 14', 16', 18', & 20' GATES; CORRAL PANELS

Meyer Forage Boxes and Manure spreaders
 10' corral panels.....\$85.00
 12' corral panels.....\$90.00
 14' corral panels.....\$102.00
 16' corral panels.....\$110.00

USED EQUIPMENT
 John Deere 720 diesel w/ 3pt, very nice
 Case 830 gas tractor
 GB 660 loader CIH 5120 series Maxxum tractors
 GB 800 loader

SKID LOADERS & ATTACHMENTS
 New Gehl out front dump buckets, higher reach
 New tire chains for skid steers
 2015 Gehl V330 fully loaded
 New Danuser Intimidator tree & post puller
 Pallet forks 48"\$800
 New M&M tree shears & grapples
 New CEA tree & post puller
 New CEA pallet forks
 New Mensch, manure scrprs
 New Danuser and Lowe post hole diggers, skid loader mounts
 New brush grapples
 New Bale Spears for big rnds

WE ARE DEALERS FOR:


 Kelly-Ryan-Kewanee - Westendorf
 C.E. Attachments
 H&S

CALL TODAY:
785-336-2621

— ITEMS FOR SALE —

2014 Case IH 280 Magnum tractor MFWD\$81,000
 Case IH 260 tractor, 4340 hrs, MFWD 5 hyd.....\$80,000
 2012 New Holland T6.140 tractor w/ 845 loader \$46,000
 Allis 7000 tractor\$7,500
 IH 986 tractor\$8,500
 Ford 8730 tractor\$22,000
 Minneapolis Moline G955 tractor mechanic special.....\$6,000
 JD 158 loader.....\$2,400
 2011 Case SV300 skid steerCALL
 2012 JD 630 flex head...CALL
 2015 JD 635FD draper head.....CALL
 JD 1293 cornheadCALL
 JD 893 cornheadCALL
 JD 608C cornhead.....\$21,000
 2011 JD 612 cornhead...CALL
 CIH 2408 cornhead.....\$10,500
 CIH 1020 flex head 25' . \$5,500
 2009 Case IH 2162 draper head 35'\$30,000
 JD 853 rowhead.....\$3,500
 1990 JD 912 pickup head.....\$5,250
 EZ Trail 475 grain cartCALL
 NDE 804 vert. mixer ...\$10,000
 Jaylor 4405 feedwagon\$10,750
 2014 Kuhn Knight VT144T mixer\$18,500
 Haybuster 2620 bale grinder ...\$9,500
 H&S 310 manure spreader.....\$8,000
 NH 195 manure spreaderCALL
 JD 3970 Chopper.....\$10,000
 Agco 9365 swather w/ 15' header.....\$32,000
 H&S HDX14 hayrake..\$11,000
 Rowe WR14 hayrake..\$14,500
 2016 New Holland 560 baler roll belt\$22,000
 2013 Farm King rake 18 wheel\$9,500
 Kent series V field cultivator



Tumbleweed Auction Co. LLC
 935 E HWY 36 Smith Center, KS
 785-282-5419
 www.TumbleweedAuctionKS.com

Tumbleweed Auction Co. LLC is taking consignments at anytime & has joined up with Jones Machinery, Inc., with 50 years knowledge in used farm equipment. Online auctions provided by AUCTIONTIME.com with absolute & reserve option available.
Call or stop by today!

MACHINERY

2014 DALTON AA BAR, 23 knife. Used on 3000 acres. Excellent condition. 402-520-1629.

TRACTOR: ALLIS-Chalmers One-Eighty Landhandler diesel, \$6500. Comes with 340 dual bucket and 3-point hitch. Call 308-390-3807.

USED TRACTORS
 '99 Case IH MX270, 5475 hrs
 '79 IH 1586, 5535 hrs
 '79 IH 1486 w/ ldr
 '79 JD 4240 QR
 '68 JD 4020 Synchro w/ 148 ldr., new injection pump

MISCELLANEOUS
 Case IH 900 planter 6R30
 '89 Case IH 1660 combine
 '99 Case IH 2388 combine 4wd
 '04 Case IH 2366 4WD 4,067 eng., 3,005 sep.
 '17 Case IH 6140 combine, 792 eng., 557 sep.
 '18 Case IH 3020 flex 30'
 '11 Case IH 3020 flex w/ air reel 30'
 '11 Case IH 3406 corn head w/ trailer
 '09 Case IH 2020 flex head 25'
 '06 IH 1020 25'
 '99 Case IH1083 corn head
 '13 EZ-Trail 510 grain cart w/ tarp
 UFT 500 Graincart
 (2) Parker 2600 gravity wagons
 '07 JD HX15 Batwing 15'
 '11 Cimarron 8' rotary mower
 Woods XT 184 rotary mower, 7'
 JD 1418 rotary cutter, 14'
 '10 Hesston 1474 mower conditioner
 '09 Case IH DC132 disc, MOCO
 '08 Case IH RB564 rd. baler
 '04 Hesston 946A round baler
 (2) CIH 6500 Conser-til, 14'
 JD 980 FC 27'
 '07 Case IH Tigermate II field cultivator 36.5'
 JD 630 disc, 25'
 JD 915 V ripper 7 shank
 JD 714 disc chisel 9 shank
 JD FBB drill 16x8
 GB 900 Hi-master ldr
 Speeco 3pt post hole digger
 Land Pride HRL-3578 retractable shank box blade 6.5'
 '14 Cub Cadet LZ60 zero turn 145 hrs

NEW EQUIPMENT
 Farmall 65A MFD cab, ldr
 Farmall 95A MFD cab
 Farmall 105A MFD cab
 Farmall 115A MFD ROPS
 TD 103 disc mower
 RB565 premium round baler
 Several Bush Hog rotary mowers and tillers
 Complete line Bush Hog zero turn mowers
 Killbros seed tender 260
 Killbros seed tender 102



ROSSVILLE TRUCK & TRACTOR
 ROSSVILLE, KANSAS
785-584-6195

42'\$8,500
 JD 980 field cultivator.....CALL
 JD 2100 Ripper.....CALL
 Tye Drill 15'CALL
 2011 CIH 1250 planter 16R30 4800 acres.....\$65,000
 CIH 1250 planter 16x30 4800 acres\$65,000
 2009 JD 1990CCS airseeder drill 42'\$47,000
 2006 JD 1990 CCS airseeder drill 30'\$53,000
 JD 1700 planter 6R36-38-40\$8,500
 2003 White 8100 planter 8x30\$13,500
 Kinze planter 8R36\$4,500
 Ind. Am SPO7 snow pusher 7'CALL
 Ind. Am F10 box blade ...CALL
 Big Ten box scraper 10' 3pt.....CALL
 Skid Steer tree shearCALL
 Skid Steer post/ shrub puller ...CALL
 Bushhog mower.....CALL
 Industrias 836R header trailer 36'CALL

7 ACRES OF USED FARM EQUIPMENT ON OUR LOT - CHECK US OUT

Complete listing on our web:
 www.jonesmachineryinc.com
BUY/SELL/TRADE DAILY
 Smith Center, KS
785-282-3000
 785-282-0432 Cell
 785-686-4005
 Evening Calls Welcome



Firestone DON'S TIRE & SUPPLY

IF 320/70R15 Dest Farm \$264
 420/90R30 RAD AT DT \$935

Prices and Product availability are subject to change without notice.

Watch for our anniversary sale the week of Feb. 15th!
 Check for rebates on Firestone Tractor Radial starting Feb. 1st

TOLL FREE 866-888-7838
www.donstire.net
ABILENE, KS

HAY EQUIPMENT
 Vermeer 605 N rd. baler w/net
 New H&S 5116 16 wheel high cap rakes

MISCELLANEOUS
 1978 JD 401C tractor loader backhoe, ROPS
 New Rhino 3150 15' Batwing shredder
 Gnuse L90 3pt. rear scoop
 Vermeer BPX 9010 bale processor
 1990 Case IH 1083 corn-head
 New Wemhoff 10' & 12' Box Scraper
 Patriot 37' header trailer
 Crustbuster DD 36X10 grain drill 30' 7.5" spacing
 New Danuser Intimidator skid steer tree puller
 Icon 1632 grader rear steer
 1981 JD 653A row crop head, sold with or w/o trailer
 2009 Harvest International H1372 swing hopper Auger



QUALITY GRAIN HANDLING EQUIPMENT





SUPERIOR IMPLEMENT, INC.
402-879-4723
 Evening: 402-879-3719
 SUPERIOR, NEBRASKA

Silver Lake bank promotes Cole Sjeklocha to assistant vice president, loan officer



Patrick Gideon, president of Silver Lake Bank, is pleased to announce the recent promotion of Cole Sjeklocha to assistant vice president, loan officer.

Cole joined Silver Lake Bank as an intern in 2015 and continued to work for the bank as a Credit Analyst on a part-time basis until his graduation from Kansas State University in 2016. Upon completing his Finance degree, Cole transitioned into a Loan Officer role for SLB.

Cole grew up in rural Sublette where he learned about the importance of community involvement. As he has begun to plant his roots in Shawnee County, Cole has become involved in his community through his involvement at Fellowship Bible Church, being on the board of the Silver Lake Education Foundation, and involvement with the Kansas Livestock Association. Cole also leaves the office a few weeks out of the year to help with wheat, corn, and bean harvest on his wife's family farm near Dodge City.

ment with the Kansas Livestock Association. Cole also leaves the office a few weeks out of the year to help with wheat, corn, and bean harvest on his wife's family farm near Dodge City.

Cole enjoys working with agricultural and small business customers and is always willing to help with projects in his community. He has enjoyed building new relationships in NE

Kansas and looks forward to building more in the future. Cole's office is in Silver Lake Bank on Highway 24 in Silver Lake, Ks.

Silver Lake Bank is a family-owned Kansas community bank founded in 1909 with five branches located within northeast Kansas. The main branch "Jayhawk" is in the capital city of Topeka. Customer service is a priority at Silver Lake Bank. Every staff

member pledges to earn your business each and every day, make banking easy for you and do the right thing with integrity and professionalism. Our staff can make decisions, are accessible and eager to help your business grow. Whether by phone, email, or in person, we work to go beyond your expectations. Contact Cole at 785-379-8176 or cesjeklocha@silverlakebank.com.



CDN Elsa 1959 won grand champion bred-and-owned female and Kansas grand champion bred-and-owned female at the 2021 Kansas Angus Futurity Junior Show, Jan. 31 in Hutchinson. Cohen Navinsky, Easton, owns the May 2019 daughter of May-Way Brilliance 736. She earlier won intermediate champion. Photo by Jeff Mafi, American Angus Association

K-State beef cattle expert cautions against cold stress

By Pat Melgares

A Kansas State University beef cattle specialist is urging the state's producers to continue monitoring their cattle's condition, especially during periods when Mother Nature sends her winter chill.

Justin Waggoner, a beef systems specialist with K-State Research and Extension, said producers are often ready to deal with heat stress during the summer, but cold stress during the latter stages of winter can also be challenging.

"Cattle are very robust creatures; they are able to withstand a wide range of temperatures," Waggoner said. "But January and February are often our most extreme temperatures in Kansas, and that can certainly have an impact on cattle."

Cattle are most comfortable when they are in what is known as the thermo-neutral zone, a range of temperatures where they are not experiencing cold or heat stress.

Waggoner said a cow's condition going into a cold period will affect how the animal can withstand stress.

"If we have a cow that is in good condition, she is going to be able to withstand colder temperatures better than a cow that is exceptionally thin," he said. "If we take a cow that is in good condition and has had adequate time to grow that winter hair coat, that animal can withstand some fairly cold temperatures. Typically, they won't experience cold stress until the ambient temperature (the 'real-feel' temperature) reaches 18 degrees Fahrenheit."

Rain, snow and wind complicate the situation, Waggoner added.

"When you wet that hair down, it reduces its ability to trap air and insulate the cow," he said. "With a wet coat, a cow can experience cold stress even at 60 degrees F."

Waggoner said cold stress increases the cow's energy requirement - not protein which is a common misconception.

"One thing we see producers do when we get a cold weather event is they roll out hay," Waggoner said. "What I recommend is utilizing hay that is slightly better quality than the forage those cattle currently are grazing. For example, if they had been turned out on milo or corn stalks, then a moderate quality grass hay will be higher quality than those stalks they were on."

Waggoner also suggested other high quality forages, such as alfalfa, may be used as a supplement.

"In some regions of the country, it's not uncommon for producers to use concentrates such as corn or byproducts as supplements during the winter. Producers might add one to two pounds of corn or byproduct feedstuffs under conditions of a storm front, in combination with some of the other things I've mentioned."

For more guidelines on dealing with cold stress, producers are encouraged to contact their local K-State Research and Extension agent.

Daily updates on weather conditions - including an animal comfort index - is available online from the Kansas Mesonet. That site allows producers to find conditions specific to their location.

MACHINERY

PLANTER SALVAGE
IH 800-900-950-955 Cyclo
JD 494-1280, 7000-7300,
plate and plateless
White 5100
Koelzer Repair
Onaga, KS 785-857-3257

Used Crownline bale bed,
electricJust In
New HydrabedsIn Stock
Case IH 8920 MFD new rubber, sharpCall

CASE II
AGRICULTURE
WINCHELL'S, INC.
Phillipsburg, KS
785-543-2118

SALVAGE COMBINES
ALLIS N7-6, L2, L, M, G, F2,
F, CII, AII; JD 8820, 7720,
7700, 6600, 4400, 3300, 105,
95, 55; MF 860, 760, 750,
510, 410; IH 1680, 1480,
1460, 915, 815, 715, 503,
403; NH TR70-85, 1400, 995,
985, 975.

SALVAGE TRACTORS
ALLIS 7000-7080, 220, 210,
190XT; D17-19; JD 84-8630,
7520, 6030, 5020, 4630,
4430, 4020, 3020, 720, 730;
CASE 1470, 1370, 1270,
1200, 1070, 930, 400; IH
1568, 1466, 1256, 1066,
1026, 806; FORD 4-5-6-8-
9000; MF 2745, 1155, 1100,
90, 85; OLIVER 2150; MM
G1000; WH2-150, 4-150.

Mike's Equipment
BUHLER, KANSAS
1-800-543-2535



NEW

- ZR5 self propelled
 - 604-605N net
 - R2300 & R2800 rakes
 - TM800 Trail Mower
 - VR-8, 10, 12 wheel rake
- USED EQUIPMENT**
- 604N
 - TM800 Trail mower
 - MC1030 MOCO
 - MC840
 - 605M net ramp floats
- FEED MIXERS**
- FA-430 Feed wagon
- To view all of our New & Used Equipment, please check out our website: www.sloophook.com or give us a call: 785-828-4706
- Sloop Sales & Hook's Repair Inc.**
Lyndon, KS 66451

BUILDINGS / BLDG MTLs.

Metal Panels & Accessories

THE VALUE LEADER. WE WON'T BE UNDERSOLD CALL FOR CURRENT METAL PRICING

- DELIVERY AVAILABLE •

WESTERN METAL
Best Service
Louisburg, Kansas
1-800-489-4100

BUILDINGS / BLDG MTLs.

SMITH POSTYARD
Hedge Post
Delivery Available
JEFF SMITH
620-496-8956

DIAMOND L SUPPLY
Dwight, KS
• 1.888.608.7913 •
785.482.3211

Metal Roofing & Siding
All Steel & Post Frame Buildings
Walk-doors, OH doors, Insulation, Livestock equipment, Scales, Miraco, Waterers, Bale Beds & Cake Feeders, Protein Tubs
Delivery Available
Customers are #1

EMPLOYMENT

KEY FEEDS
Clay Center, Kansas
is accepting applications for CDL drivers. **Qualifications:** Current CDL; Current medical card; Good driving record; Able to lift 50 lbs. Drivers will be home nightly. No over night stays. Competitive pay and benefits. Retirement & health insurance. Pre-employment drug screen required.

Applications can be picked up at Key Feeds, 105 4th St., Clay Center, KS 67432.
For questions call Rod at 785-632-2141

Fourth & Pomeroy Maintenance and repair position:

Position is responsible for regular greasing for bearings, repairs and maintenance of belts, motors, pellet machine, grain elevator legs and air compressor. Repair experience required with pay based on experience. Company provides paid employee health coverage, retirement program, paid holidays and paid vacation after one year.

Contact Rod, 785-632-2141.

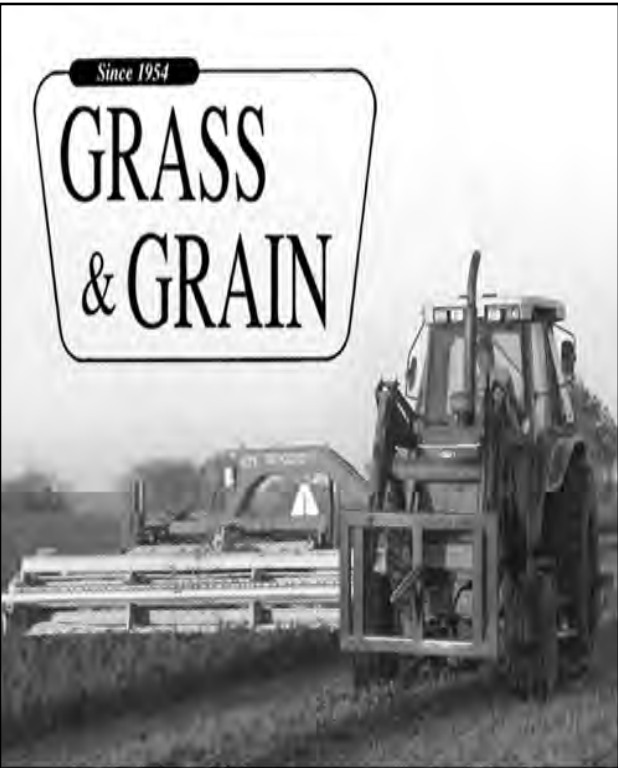
PETS

GREAT PYRENEES puppies, 8 weeks, farm raised with sheep and goats, 913-845-3330.

WANTED

WANTED-JD 10' 1590 OR 750 no till drill with small seed box. 785-477-6096.

WANT TO BUY SALVAGE and non-running ATV's, snowmobiles, jet skis, and dirt bikes. Any condition, cash paid, will pick up. 402-469-2002.



Looking for an auction bill, hay prices or farm news?
Subscribe to:
GRASS & GRAIN
Call 785-539-7558
or visit us ONLINE at
www.grassandgrain.com

Trauernicht Simmentals 46th Annual PRODUCTION SALE
Sunday February 21, 2021 12:00 Noon
New Location: Trauernicht Simmentals Sale Facility at 803 E Pine, Wymore, NE

<p>LHT Mr Bank Roll 45H PB SM W/C Bankroll 811D x SVF/NJC Built Right N48 BW 1.6 WW 69 YW 102 API 116 TI 68</p>	<p>LHT Teared Up 76H 5/8 SM TJ Teardrop 783F x SAV Final Answer 0035 BW -1.1 WW 92 YW 140 API 143 TI 85</p>
<p>LHT Mr Turn Pike 128H 3/4 SM Rubys Turnpike x SC Mo Magic BW 3.0 WW 84 YW 130 API 122 TI 74</p>	<p>LHT Mr Outcross 92H PB SM WS Outcross C164 x W/C Executive Order BW .8 WW 95 YW 150 API 137 TI 90</p>
<p>LHT Mr Outcross 136H PB SM WS Outcross C164 x WS All In W111 BW -6 WW 81 YW 120 API 142 TI 85</p>	<p>LHT Ms Dew North 370G PB SM GSC GCCO Dew North x Welshs Dew It Right Bred to LCDR Progressive 106G</p>

Full offering at www.ebersale.com

LHT Simmentals

BID ONLINE AT LiveAuctionsTV.com

516 E Pine Road, Wymore, NE 68466
www.trauernichtsimmentals.com

Loren 402-645-8306
or 402-230-0812
Scott 402-239-1272

Guest Breeder:
State Line Simmental
402-239-0843

Sale Managers:
EBERSPACHER ENTERPRISES INC.
Office 507-532-6694 • Val 612-805-7405
Download the EE APP for all current info!
Full sale offering online at Ebersale.com

Meat and poultry workers' COVID-19 case rates 60 percent lower than general U.S. population

New analysis of independent data show that reported new COVID-19 infection rates among meat and poultry workers are 60% lower than in the general U.S. population and two-thirds lower than case rates in the sector in May 2020.

According to data from the Food and Environment Reporting Network

(FERN), the meat and poultry sector was reported to have an average of 32.64 new reported cases per 100,000 workers per day in January 2021, two-thirds lower than the average of 98.39 new reported cases per 100,000 workers per day in May 2020.

The *New York Times* reports that in January 2021, the average new case rate

for the U.S. population climbed to 78.59 cases per 100,000 people per day, more than 11 times higher than the new case rate in May.

Meat Institute president and CEO Julie Anna Potts commented:

"Meat and poultry workers are substantially less likely to be infected with COVID-19 than the

general population as a result of the comprehensive protections instituted since the spring of 2020, when the pandemic's impact on our sector peaked.

"Meat Institute members are fully committed to continuing these proven measures and

moving forward to vaccinate frontline meat and poultry workers as soon as possible and many can even assist in vaccine distribution for all Americans."

Since the Meat Institute and the United Food & Commercial Workers, America's largest food

Small Business Development Center for Agriculture, Food and Forestry; and the NRCS+MU Grasslands Project sponsor the two-night workshop.

"A properly managed

workers union, jointly urged state governors to follow federal guidance and prioritize frontline meat and poultry workers for COVID-19 vaccination, employers have taken concrete steps to educate workers about vaccination and facilitate access to vaccines.

Free online event centers on stocker cattle

Beginning stocker cattle operators can learn how to improve profits during a free online event Feb. 16 and 18 at 7 p.m.

University of Missouri Extension; the Missouri

stocker cattle operation can be a very profitable cattle enterprise," says MU Extension livestock specialist Patrick Davis.

Topics covered at the Online Southwest Missouri MU Extension Beef Cattle Conference include:

Stocker cattle nutritional and health management.

Low-input heifer development system to produce profitable open feeder heifers.

Business management, COVID-19 considerations and economics of a stocker operation.

Participants will receive a link to the Zoom sessions. Register by Feb. 15 at <https://extension.missouri.edu/events/online-southwest-missouri-mu-extension-beef-cattle-conference>.

For more information, contact Davis at davismp@missouri.edu or 417-955-0287.

BUY YOUR WAY Bull Sale

at the farm, Clay Center, Kansas

FEBRUARY 27 - MARCH 6, 2021

ONLINE BIDDING THROUGH MARCH 4, LIVE CLOSEOUT MARCH 6

SELLING 55 SIMGENETIC BULLS
SPRING & FALL • NON-DILUTE RED & BLACK

Private Treaty | Limited Auction
Buy Your Way!

CONVENIENT, LOW PRESSURE, FAIR, TRANSPARENT
BUYERS DETERMINE THE SALE ORDER
VISIT OUR WEBSITE TO LEARN MORE ABOUT
OUR UNIQUE SALE FORMAT

**ASK ABOUT OUR
EARLY BID DISCOUNTS!**



133G
ASA 3749672
RED SIMMENTAL



161G
ASA 3749693
RED SIMMENTAL



G60
ASA 3749651
BLACK SIMANGUS



2H
ASA 3821576
BLACK SIMANGUS

HALF THE BULLS IN THE SALE ARE BLACK
AND HALF ARE NON-DILUTE RED

FIND THE CATALOG, BID LINKS AND MORE AT

www.honestbulls.com
OR CALL OR EMAIL FOR YOUR SALE BOOK:

Rodney & Kim Hofmann
2244 19th Rd, Clay Center, KS 67432
Ph 785.944.3674 hsfcows@gmail.com

HOFMAN N
Simmental

F A R M S



**Professional Hoof Care for
Dairy, Beef, Show Cattle, Bulls**

**Preventative Trimming
& Lameness Treatment**

Northeast Kansas Area
316-644-8392
robert@agritrim.com

Marysville Livestock Sales

Every Thursday at 12 Noon

Bill Keesecker, Manager • 785-562-1015

1180 US Hwy. 77, P. O. Box 67, Marysville, KS 66508

PLEASE VISIT OUR WEB SITE TO SEE OUR LATEST DETAILED MARKET REPORTS AND
UPCOMING CONSIGNMENTS AND SPECIAL SALES: www.marysvillelivestock.com

STEERS/BULLS

	BEEF	HOLSTEINS
300-400#	\$181.00-\$160.00	\$98.00-\$55.00
400-500#	\$180.00-\$163.00	\$99.00-\$58.00
500-600#	\$177.00-\$131.00	\$98.00-\$70.00
600-700#	\$158.00-\$128.00	\$94.00-\$60.00
700-800#	\$142.00-\$128.00	\$90.00-\$65.00
800-900#	\$130.00-\$119.00	\$84.00-\$66.00
900-1,000#	\$128.00-\$111.00	\$83.00-\$65.00
HEIFERS		
300-400#	\$154.00-\$138.00	
400-500#	\$151.00-\$135.00	
500-600#	\$148.00-\$122.00	
600-700#	\$139.00-\$122.00	
700-800#	\$130.00-\$121.00	
800-900#	\$121.00-\$119.00	
FIELDMEN		
Jim Dalinghaus	Dave Bures, Auctioneer	Jeff Cook
785-799-5643	402-239-9717	785-564-2173
Baileyville, KS	Odell, Nebraska	Hanover, KS
		Greg Anderson
		785-747-8170
		Waterville, KS
		Trevor Lundberg
		785-770-2271
		Frankfort, KS
		Taylor Schotte
		785-268-0430
		Marysville, KS
		Barn Phone • 785-562-1015 www.marysvillelivestock.com

*Due to State & County Mandates, MASKS
& Social Distancing are required &
NO CHILDREN in the Barn. Thank you.*

Market Report for 2-4-21.
1,400 Head Sold.

HFRETTES:

1080#-820# \$111.00-\$90.00

COWS-HIGH YIELDING

1700#-1075# \$66.00-\$60.00

COWS-LGT WT & LOW YIELDING

1485#-800# \$56.00-\$40.00

BULLS:

2475#-1770# \$89.00-\$80.00

NOW IS A GOOD TIME TO GET RID OF UNUSED ITEMS ON THE FARM

GRASS & GRAIN Classifieds
are the perfect way to do it!

CLASSIFIED LINER ADS:

65¢ per word.

Discounts available for pre-paid ads that
run 2+ weeks.

Visit us online, give us a call, stop by, or
fill in and mail the ad form on page 16 to
submit a classified liner ad.

CLASSIFIED DISPLAY ADS:

\$10.50 per column inch.

Discounts not available.

Give us a call, stop by, or contact your
Grass & Grain sales rep to place a
classified display ad!

www.GrassAndGrain.com

785-539-7558

1531 Yuma St • Manhattan, KS 66502

CLASSIFIED LINER ADS look like this. First line is in all-caps and bold. No other formatting available. Pay by-the-word. Words counted by a space. Phone numbers or words separated by a dash are 1 word. Words separated by a backslash are counted as 2.

CLASSIFIED DISPLAY ADS LOOK LIKE THIS!

- Includes a defining border around the ad.
- Pay by the inch.

All formatting is available.
Photos/ logos optional.
Can be 1 or 2" columns wide.
**Depending on classification*

Color is now available for classified display ads!*
**Color is \$15 per inch. Ad must be at LEAST 1colX3.5" to run in color in the classified section.*

UPCOMING SPECIAL ISSUES

Soil Health – February 23rd

Sheep & Goat – March 9th

Salina Farm Show – March 16th

Bring on Spring – March 23rd

DEADLINES:

Soil Health – Wed., Feb. 17th, before Noon

Sheep & Goat – Wed., March 3rd, before Noon

Salina Farm Show – Wed., March 10th, before Noon

Bring on Spring – Mon., March 15th, before Noon

*To get more info on
upcoming special
issues or other
advertising
opportunities,
contact your
GRASS & GRAIN
sales rep:*



Donna Sullivan
– Managing Editor –
Cell: 785-632-7001
Office: 785-539-7558
gandgeditor@agpress.com



Shelby Mall
– Sales Representative –
Cell: 303-518-0327
Office: 785-539-7558
shelby@agpress.com



Kurtis Geisler
– Sales Representative –
Cell: 785-293-2221
Office: 785-539-7558
kurtis@agpress.com

KANSAS AG REPORT



Ken Rahjes, Host

**For TV Show times check your
local listings or watch at**

kansasagreport.net

Kansas Hay Market Report

Hay market prices for the week ending January 30 were steady for all classes of hay, on limited test. Demand remains strong for alfalfa. According to U.S. Drought Monitor for the week of January 28th, moderate precipitation and/or heavy snow hit eastern Nebraska and Kansas. Abnormal dryness (D0) decreased to 14%, moderate drought (D1) increased to 32.5%, severe drought (D2) decreased to 7%, and extreme drought (D3) remained at 10%. If you have any extra hay to sell and/or need hay here in Kansas, use the services of the Internet Hay Exchange: www.hayexchange.com/ks.php.

Southwest Kansas

Dairy alfalfa, grinding alfalfa, ground and delivered steady; movement moderate. Alfalfa: horse, premium small squares 260.00-280.00. Dairy 1.00-1.05/point RFV, Supreme 185-237.00.00, Premium 170.00-195.00, Good 150.00-178.50. Stock or Dry Cow 165.00-175.00. Grinding alfalfa 160.00-175.00, with an instance at 180.00-190.00. Ground and delivered locally to feed lots and dairies, 175.00-185.00. Grass Hay: small squares none reported, large 4x4 squares 100.00-110.00, large rounds 70.00-80.00; Sudan: large round 85.00-90.00. Sorghum: large rounds 80.00-90.00; Corn Stalks: ground and delivered 70.00-75.00; Wheat straw, small squares 3.50-4.50/bale, large 3x4 squares 80.00-90.00. The week of 1/24-1/30, 8,775T of grinding alfalfa and 2,158T of dairy alfalfa was reported bought/sold.

South Central Kansas

Dairy alfalfa, alfalfa pellets, grinding alfalfa, ground/delivered steady; movement moderate. Alfalfa: horse, small squares 255.00-275.00. Dairy, 1.00/point RFV, Supreme 185.00-225.00, Premium 170.00-195.00, Good 150.00-178.00. Stock cow, 150.00-160.00. Fair/good grinding alfalfa 145.00-155.00 delivered with instances at 160.00

Marketing group identifies four technologies changing the meat case

Midan Marketing has identified four technologies that it expects to create a more interactive meat case for consumers over the next five years: DNA traceability, processing automation, packaging innovations and e-commerce.

In a recent blog post, Managing Principal Michael Uetz said consumers have begun to expect a certain level of "interactivity" from the brands they buy. Midan cited recent survey data that showed 73% of consumers worldwide said traceability is important to them, and nearly all were willing to pay a premium for it.

"Today's consumers are used to having a world of information at their fingertips and want the same kind of access to information about their food," he said.

COVID-19 increased consumers' desire for vacuum-sealed meat because it could be sanitized easily as well as frozen. Additionally, the pandemic accelerated the adoption of e-commerce by several years, notably in refrigerated, frozen, breakfast and luncheon meats, IRI consultant Erkin Peksoz said in the blog. Midan said its

own research showed 34% of meat consumers plan

delivered. Ground and delivered 160.00-170.00. Alfalfa pellets: Sun cured 15 pct protein 190.00-210.00, 17 pct protein 200.00-210.00. Dehydrated 17 pct 305.00-310.00. Grass Hay: Bluestem, 3x4 and 4x4 squares 100.00-110.00, large rounds 60.00-90.00. Brome: large 4x4 squares 100.00-120.00, large rounds 95.00-100.00. Teff: large 3x4 squares 155.00-165.00, large rounds 120.00-130.00. Sudan: large rounds 80.00-85.00. Corn stalks: large squares, 65.00-75.00, large rounds 60.00. Wheat straw: large 4x4 squares, 65.00-75.00. The week of 1/24-1/30, 7,917T of grinding alfalfa and 200T of dairy alfalfa was reported bought/sold.

Southeast Kansas

Dairy alfalfa, grinding alfalfa, ground/delivered steady, grass hay steady; movement slow to moderate. Alfalfa: horse or goat, 230.00-240.00. Dairy 1.00-1.05/point RFV. Stock cow 150.00-160.00. Fair/Good grinding alfalfa, large rounds 135.00-145.00 delivered. Ground and delivered, none reported; Grass hay: Bluestem, small squares 120.00-125.00, good 3x3 squares 100.00-125.00, good, 3x4 squares 90.00-120.00, large 4x4 squares 100.00-110.00, large rounds 70.00-80.00. Brome, good, small squares none reported, 3x4 to 4x4 squares 95.00-125.00, large rounds 65.00-80.00. Wheat Straw: 3x4 and 4x4 squares 60.00-70.00. The week of 1/24-1/30, 1,698T of grass hay was reported bought/sold.

Northwest Kansas

Dairy alfalfa, ground/delivered steady, grinding alfalfa steady; movement slow. Alfalfa: Horse or goat, 220.00-230.00. Dairy, Premium/Supreme 1.00/point RFV. Stock cow, fair/good 145.00-155.00. Fair/good grinding alfalfa, 120.00-140.00. Ground and delivered locally to feedlots and dairies, none reported. Sudan, large rounds 60.00-70.00. Wheat straw, large squares none reported.

North Central-Northeast Kansas

Dairy alfalfa, grass hay, grinding alfalfa, ground/delivered steady; movement slow. Alfalfa: horse, premium small squares, 9.00-10.00/bale. Dairy 1.00-1.05/point RFV, Supreme 185-237.00.00, Premium 170.00-195.00, Good 150.00-178.50. Stock Cow, 150.00-160.00. Fair/good, grinding alfalfa, 120.00-130.00. Ground and delivered 140.00-

to use online shopping as their primary meat purchasing method once the pandemic has ended.

BJs SEASONAL ONLINE AUCTION * Lyons, KS

Betty of BJ's is selling some of her store merchandise to make way for "new" merchandise. Personal household property, Collectibles, Furniture, Plumbing Parts, Misc

Bidding Opens Thursday, February 11, 8 AM

Bidding Soft Closes Wednesday, February 17, 8:00 PM

Pickup by Appointment Only: Friday, February 19 • 1:00-7:00 p.m.

Auction & BIDDING Information available at:
<https://hollingerauction.hibid.com/auctions/current>

HOLLINGER ONLINE AUCTIONS, Lyons, KS — Jim & Mary 620-257-8148

INVITATION TO BID

Scott Wilkens is accepting sealed bids on the following Washington County real estate:
An approximately 10-acre tract in the Northeast Corner of the Northeast Quarter (NE/4) of Section 32, Township 3 South, Range 2 East, Washington County, Kansas, commonly known as 894 13th Road Linn, Kansas 66953. Connected to Rural Water and has a large concrete slab to build on.



To view the interior buildings please contact Galloway, Wieggers & Brinegar to schedule an appointment. Bids sheets can be obtained by contacting Galloway, Wieggers & Brinegar or by visiting the website: sealedbidauction.net

Bids must be received by **12:00 P.M. February 19, 2021**. Seller reserves the right to accept any bid, reject all bids or invite certain bidders to a subsequent private auction.



GALLOWAY, WIEGERS & BRINEGAR, P.A.
ATTORNEYS AT LAW

520 Main Street
Seneca, KS 66538
785-336-0021
jason@gwblaw.net
gwblaw.net

1114 Broadway
P.O. Box 468
Marysville, KS 66508
785-562-2375
Fax: 785-562-5348

150.00. Grass hay: Bluestem, small squares 5.50-6.50/bale, 3x4 to 4x4 squares 100.00-105.00, large rounds 60.00-90.00. Brome, small squares 6.50-7.50/bale, 3x4 to 4x4 squares 110.00-120.00, large rounds 75.00-85.00; Sudan, large rounds, 60.00-65.00. Wheat Straw: small squares 5.00-6.00/bale, large 4x4 squares 75.00-85.00, 100.00-110.00 delivered, large rounds 65.00-75.00. The week of 1/24-1/30, 2,618T of grinding alfalfa and 100T of dairy alfalfa was reported bought/sold.

*Posted by Kim Nettleton, Kansas Department of Agriculture

**Prices are per ton and FOB unless otherwise noted

FARM AUCTION

SATURDAY, MARCH 6, 2021 — 10:00 AM

We will sell the following items at Public Auction at the farm located from Abilene, KS 8 miles south on Hwy. 15 to Rural Center School, then 3 miles west on 1400 Ave. to Eden Rd., then 3 south & 3/4 west to 523 1100 Avenue, or from Elmo, KS, 5 miles north on Hwy. 15 & 3 & 3/4 mile west on 1100 Ave.

(In the event of bad weather the sale will be held Friday, March, 12)

COMBINE, TRACTORS, BI-DIRECTIONAL LOADER & SKID STEER (sell around 2:00): 1995 Gleaner R72 RW assist combine, Cummins water cooled engine, hydro, straw chopper, 2,809 sep hrs, 3967 engine hrs., through shop every year, slick machine; **Gleaner #800 25' flex head w/trailer;** **Gleaner #700 30' rigid head w/trailer;** **1990 Ford 946 4WD tractor,** 4 SVCs, 70% 20.8R 42 duals all around, 9,100 hours, ser.# 517843, nice condition; **1993 Ford bi-directional loader** with 8' bucket, pallet fork & bale spear, 8,000 hours; **1976 John Deere 4230,** 8 speed PS, 2 SVCs, new rubber, 480/80R 38 rears, approx. 6,200 total hours, ser.# 035344R, nice; **Allis Chalmers D19** gas tractor; **Allis Chalmers D15** gas tractor, restored; **Allis Chalmers WD45 tractor;** **Ford 9N tractor w/fenders,** 12V, new rubber, good paint; **Bobcat 773 Advantage Series skid steer** with 5.5' smooth bucket and attachable teeth, 1,240 hours, slick; **hydraulic post hole digger w/12" & 2 smaller bits,** like new. **TWIN SCREWS, SINGLE AXLES & PICKUP TRUCKS, TRAILERS, SIDE BY SIDE (sell around 1:00):** **1999 Ford Sterling twin screw grain truck** with Cummins, 9 speed, 22' bed & hoist, 52' sides, new rollover tarp, sweet; **1997 Ford LN 9000 twin screw grain truck** with Caterpillar engine, 13 speed, 20' bed & hoist, new rollover tarp, tight; **1977 Ford LN 9000 twin screw grain truck,** Detroit diesel, 5x4 tranny, 22' bed & hoist, new rollover tarp; **1975 Ford LN 750 grain truck,** 5x2, w/16' bed & hoist; **1974 Ford LN 750 grain truck,** 350 engine, 5x2, 16' bed & hoist; **1970 Ford LN 700 grain truck,** 330 engine, 5x2, 16' bed & hoist; **2004 Ford F250 4x4 diesel automatic 4 door pickup,** silver, 180K, nice; **PJ 20' bumper hitch flatbed dovetail trailer,** fold up ramps, bought at end of 2020, like new; **PJ 24' gooseneck flatbed trailer w/ramps;** **Yamaha Rhino 450 4x4,** good shape. **All trucks are mechanically good.**

FARM MACHINERY (sells around noon): **2011 Great Plains 40' 3 section folding grain drill,** dry fertilizer, heavy duty, 7,723 acres, GPYY2241, 3S4000 HD 6375, nice; **2012 Great Plains 48' field cultivator,** floating hitch, walking tandems on center & wings, 5 row spike tooth leveler, good shovels, field ready; **2004 Sunflower 1434 30' disk,** walking tandems on center & wings, discs were sharpened last year, 21.75 in front & 22.50 in back, field ready; **1997 Glenco 17 shank Soil Saver;** **2003 Land Pride 15' pull type batwing mower;** **IH #700 8 bottom on land plow;** Demco 650 bu. grain cart, PTO or hydraulic, 30.5x32 rubber, bought new by the Lehmans; **Flow EZ gravity box & gear w/hyd. auger,** new flotation tires & bearings; **Bradford gravity wagon w/extensions;** **drill fill auger;** **Ford rotary mower;** **bale fork;** **rear blade**

TOOLS & FARM RELATED ITEMS (sell around 11:00): Acetylene torch; (2) battery operated grease guns; Kobalt battery driven tool set, less than a year old; Dewalt battery set, power washer; space heater; 3/4 socket set; Homelite chain saws; 1T chain hoist; log chains; Handyman jack; scoops & pitch fork; old Forney welder; tap & dies; tri plex; large variety of tools and shop supplies; **Jetco PTO wire winder;** 140 electric fence posts; tin & lumber; various other farm related items.

ANTIQUES, COLLECTIBLES & MISC (sell first-10:00): Anvil; horse drawn & pioneer antiques; 5 cast iron implement seats, 3 on harness hame stands; lightning rods; industrial table base; platform scale; post vises; steel implement wheels; old wrenches; pocket knives, some are old; Abilene Rodeo & Hesston belt buckle collection; fishing poles; lots of other primitives.

FURNITURE & HOUSEHOLD GOODS (after antiques/before noon; may run 2 rings here): Maytag washer; Roper dryer; narrow lighted china cabinet; sofa; rocking twin sofa; 4 black retro chrome dining chairs; kitchen table & chairs; patio table & chairs; A variety of items from the house yet to be determined.

NOTE: This is a very nice line of machinery, well cared for and always shedded. Loader tractor available. 30 days for removal. Your inspection invited prior to sale. Announcements made sale day to take precedence. May run 2 rings late morning if needed. Please WEAR MASKS and PRACTICE SOCIAL DISTANCING. Sellers and auction workers not responsible for accidents or health problems. LUNCH: New Basil Church Ladies.

TERMS: Cash or good check day of sale. Not responsible for accidents. **CLERK:** Shirley Riek, 526 Frederick, Clay Center, KS 67432.

PAUL LEHMAN & DOROTHY LEHMAN TRUST, SELLER

For questions regarding the items to be sold please call Paul Lehman at (785) 479-6262

Go to kretzauctions.com at Global Auction Guide or kansasauctions.net/kretz for full listing, picture & more info

Auction conducted by: **Kretz Auction Service**
Greg Kretz, Salesman & Auctioneer: (785) 630-0701
Guest Auctioneer: Randy Reynolds (785) 263-5627

Laflin ANGUS RANCH

ANNUAL ANGUS PRODUCTION SALE
SATURDAY, MARCH 6th, 2021
HIGH NOON • OLSBURG, KS

This is the most explosive set of bulls and females to ever be offered at Laflin Ranch!

Selling 100 Herd Bulls, 50 Fancy Females, 7 Big Time Junior Show Heifer Prospects, Halter Broke and Ready to Go! Fall Pairs, Bred Heifers, Bred Cows, Donor Prospects and Embryos.

ALL BULLS SOLD ARE RANGE READY, FEED EFFICIENT AND READY TO GO TO WORK FOR YOU!
SIGHT UNSEEN BUYS GUARANTEED
FREE DELIVERY
MANY SIRE GROUPS AVAILABLE

R.D.785-587-5852
Barb 785-468-3529

Look for Sale Videos and Sale Book online at www.LAFLINRANCH.com

Celebrating 121 years of Angus Heritage



USDA extends General Signup for Conservation Reserve Program

The U.S. Department of Agriculture (USDA) is extending the Conservation Reserve Program (CRP) General Signup period, which had previously been announced as ending on Feb. 12, 2021. USDA will continue to accept offers as it takes this opportunity for the incoming Administration to evaluate ways to increase enrollment. Under the previous

administration, incentives and rental payment rates were reduced resulting in an enrollment shortfall of over four million acres. The program, administered by USDA's Farm Service Agency (FSA), provides annual rental payments for ten to 15 years for land devoted to conservation purposes, as well as other types of payments. Before the General

CRP signup period ends, producers will have the opportunity to adjust or resubmit their offers to take advantage of planned improvements to the program.

"The Conservation Reserve Program provides a tremendous opportunity to address climate change both by retiring marginal cropland and by restoring grasslands, wetlands, and forests," said Robert Bonnie, deputy chief of staff, Office of the Secretary. "CRP has a 35-year track record of success beyond just climate benefits, by providing income to producers, improving water

quality, reducing erosion, and supporting wildlife habitat and the hunting and fishing opportunities that go along with it. By extending this signup period, we'll have time to evaluate and implement changes to get this neglected program back on track."

As one of the largest private-lands conservation programs in the United States, CRP provides both economic and conservation benefits by taking land out of agricultural production. Program successes include:

Sequestering in soils and plants over 12 million metric tons of carbon di-

oxide equivalent (CO₂e), or about the same amount that the entire state of Delaware emits annually.

Preventing more than two billion tons of soil from being blown away by wind erosion over the life of currently enrolled acres.

Reducing phosphorous reaching streams by almost 85 million pounds, nitrogen by nearly 450 million pounds, and sediment by over 160 million tons in 2020 alone.

Creating more than 2.3 million acres of restored wetlands while protecting more than 177,000 stream miles with riparian forest and grass buffers, enough to go around the world seven times.

Establishing over a half million acres of dedicated pollinator habitat and nearly 15 million more acres of diverse plantings that provide forage for pollinators.

Increasing populations of ducks and other game birds, prairie chickens, and such grassland songbirds as Baird's Sparrow.

CRP in the Northern Great Plains supports an estimated 8.6% of the grassland bird population.

Increasing habitat that supports economic opportunities, such as job creation, related to hunting and fishing activities.

This signup for CRP gives producers an opportunity to enroll land for the first time or re-enroll land under existing contracts that will be expiring Sept. 30, 2021. All interested producers, including those on Indian reservations and with trust lands, are encouraged to contact their local USDA Service Center for more information.

All USDA Service Centers are open for business, including those that restrict in-person visits or require appointments. All Service Center visitors wishing to conduct business with FSA, Natural Resources Conservation Service, or any other Service Center agency should call ahead and schedule an appointment. Service Centers that are open for appointments will pre-screen visitors based on health concerns or recent travel, and visitors must adhere to social distancing guidelines. Visitors are also required to wear a face covering during their appointment. Our program delivery staff will continue to work with our producers by phone, email, and using online tools. More information can be found at farmers.gov/coronavirus.

Trust... the most important selection tool!
March 19, 2021

- 200 Red Angus Bulls
- 50 Fall Calving Commercial Red Angus Bred Heifers
- 50 Open Yearling Commercial Red Angus Heifers

Strong City, KS
 620.340.7461 (Joe)
 620.340.9774 (Daniel)
MushrushRanches.com

topline STEEL BUILDINGS (800) 369-3882
www.toplinebuildings.com
sales@toplinebuildings.com

STEEL BUILDING INVENTORY SALE

I-Beam Construction
 Easy Bolt-Up Design

40x65 • 60x90 • 100x150 • Many Others Available

AbileneMachine® Ag Replacement Parts **FARM TUFF**

Planter Parts
 Blades • Boots • Mud Wheels • Seed Tubes
 Gauge Wheel Arm Kits • and More

Gauge Wheel Assemblies for John Deere®, Kinze® and White®

3" x 16" #AMX55041
 4.5" x 16" #AMX55039 \$115 ea

All Planter and Drill Parts **10% OFF**
 With Code **PLANT21**
 Through 2/28/21

Drill Boots for John Deere® \$27 ea
 #AMN280446 - RH
 #AMN280447 - LH

15" x 3.5mm Seeder Blade for John Deere®, Kinze® and White® \$23.50
 #AMAA53860

800-255-0337 **AbileneMachine.com**

LYONS RANCH
 33rd Annual ANGUS BULL SALE
 Monday, March 1st
 Manhattan, KS
 120 18 month old bulls
 Sons of Ashland, Bronco, Manhattan, Playbook and more
 GE-EPDs-Ready to work
 Call 785-499-2944 or WWW.LYONS Ranch.COM

REAL ESTATE AUCTION
 176.27 acres m/l of Pottawatomie County, KS Grassland

SATURDAY, MARCH 6, 2021 - 3:00 PM
 Auction Location: St. Columbkille Church Hall, BLAINE, KANSAS

PROPERTY LOCATION: 2 miles South of the Hwy. 16 & Hwy. 99 Jct. at Blaine, KS on Hwy. 99 to Huff Rd., then 1 mile West to Rock Creek Rd. The pasture is on the Southwest corner.

LEGAL DESCRIPTION: A tract of land located in the Northeast Quarter, in the East Half of the Southeast Quarter and a small portion of the Northwest Quarter all in Section 8, Township 7 South Range 9 East of the Sixth PM, Pottawatomie County, KS. This property consists of 176.27 acres m/l of mostly clean Native Grass Pasture with approximately 25 acres of brome grass for pasture or hay and 2 smaller wooded areas for wildlife habitat. This property has 3 ponds and a very good pipe corral. This property has building site potential with a scenic view, electric service across the road and a rural water line (no meter). Fences are in fair to good condition. **Come Take a Look at this property!**

For more info or viewing please call John E. Cline - 785-532-8381 or check website: www.clinerealtyandauktion.com

TERMS: The seller requires 10% down day of sale with the balance to be due on or before April 6, 2021. Possession to be upon closing. Buyer and Seller to equally split the title insurance and closing costs. **Cline Realty & Auction, LLC represents the Sellers' interests.** Sale subject to seller's confirmation. Statements made sale day take precedence over printed material.

SELLER: DONALD E. McLAUGHLIN ESTATE
 Auction Conducted By: **CLINE REALTY & AUCTION, LLC**
 Onaga, KS: 785-889-4775
 John E. Cline, Broker/Auctioneer: 785-532-8381
 Website: www.clinerealtyandauktion.com

KEY FEEDS CATTLE MINERAL SALE:
 Feb. 1 - May 15, buy 20 bags and get 1 bag free!

Order by May 15 and ship by May 28 for free bag special

Key Feeds will custom mix your cattle mineral the way you want.
 Choose any of the following additives:
 Chlortetracycline • Zinpro Availa 4 chelated trace minerals • MOS
 3 choices of fly control: Altosid, Justify or Rabon.
 Cinnagar • Bovatec or Rumensin
 One ton minimum order for bags delivered or
 2 tons minimum order for bulk delivered.

Fourth & Pomeroy Associates, Inc.
FEED KEY FEEDS
 Joseph Ebert, VP

CALL KEY FEEDS TODAY
1-800-432-7423 OFFICE
 Clay Center, Kansas 67432
 Byron Thoreson • 785-630-0161
 Rod Bohn, GM • 785-630-0846

MINNEAPOLIS LOCATION: James Carr • 785-630-0491
 TIPTON LOCATION: Tim Wiles • 785-630-1049

JC LIVESTOCK SALES INC.
 Wednesday Sale, Hogs NOON • Cattle 12:30 PM

Report from February 3, 2021

STEERS			
3	463	179.00	36
9	471	175.00	6
3	548	170.00	10
8	632	158.00	19
67	787	138.00	71
9	794	135.50	25
13	803	134.50	4
60	843	132.75	830
60	898	128.75	2
			878

TOP BUTCHER COW: \$62.25 @ 1,590 LBS.
 TOP BUTCHER BULL: \$89.00 @ 2,255 LBS.

SPECIAL 55TH ANNIVERSARY SALE
WED., FEB. 10 • SPECIAL TIME 11 A.M.
STRS & HFRS: 30 Blk X 375-500 lbs. • 80 Ang X 700-850 lbs. • 80 Ang X 600-800 lbs. • 90 Ang X 600-800 lbs. • 100 Blk X 700-800 lbs. • 30 Blk X 800-900 lbs. • 130 Ang X 600-750 lbs. • 60 Ang X 650-850 lbs. • 60 Blk X 600-800 lbs. • 26 Ang X 550-650 lbs. • 70 Ang X 600-800 lbs. • 20 Ang X 600-800 lbs. • 35 Ang X 600-750 lbs. • 25 Blk X 500-600 lbs. • 25 Ang X 800-900 lbs. • 30 Blk X 650-800 lbs. • 65 Red Ang X 650-800 lbs. • 24 Wf 600-750 lbs. • 120 Ang X 675-875 lbs. • 73 Ang X 600-800 lbs. • 80 Red X 700-850 lbs. • 120 Blk X 775-875 lbs. • 65 Red Ang X 650-875 lbs. • 20 Ang X 650-800 lbs. • 65 Ang X 650-800 lbs. • 100 Blk X 550-700 lbs. • 46 Wf 700-850 lbs. • 55 Wf 600-775 lbs. • 35 Bwf X 550-650 lbs. • 80 Ang X 600-800 lbs. • 80 Ang X 650-825 lbs. • 65 Ang X 600-800 lbs. • 60 Mix 450-600 lbs. • 10 Blk X 600-750 lbs. **STRS ONLY:** 49 Blk X 775-850 lbs. • 70 Bwf, Wf 650-850 lbs. • 63 Blk X 825-875 lbs. • 80 Red X 800-950 lbs. • 120 Blk X Red 750-900 lbs. • 43 Ang X 850-950 lbs. **HFRS ONLY:** 50 Blk X 600-750 lbs. • 45 Ang X 675-725 lbs.

PLUS MORE BY SALE DAY!

Watch online with cattleusa.com (Tab J.C. Livestock Sales)
 Must register to bid.

If you need assistance in marketing your cattle please call & we will be happy to discuss it with you.

CLAY CENTER LIVESTOCK SALES INC.
 Cattle sales Tuesday, 11:00 AM.

Report from February 2, 2021

STEERS			
7	414	192.00	8
13	503	186.00	458
8	566	174.00	510
7	588	164.50	5
20	633	159.00	667
4	655	155.00	6
25	671	151.00	755
21	725	137.75	4
20	770	136.50	737
21	791	135.60	11
15	827	134.25	846
15	856	134.00	
9	902	130.25	
14	918	126.75	

HEIFERS
 8 364 161.00

TOP BUTCHER COW: \$68.50 @ 1,560 LBS.
 TOP BUTCHER BULL: \$97.00 @ 2,110 LBS.
 BRED COWS: \$800-\$985

Be sure to check out our Facebook page for the latest consignments.

Clay Center, Ks • Barn Phone 785-632-5566
 Clay Center Field Representatives:
 Tom Koch, 785-243-5124 Lance Lagasse, 785-262-1185

EMPORIA LIVESTOCK SALE CO.
 Bonded & Insured

SALE EVERY WEDNESDAY IN EMPORIA, KANSAS AT 11:00 AM
 620-342-2425 or 800-835-7803 toll-free • Fax: 620-342-7741

Date: 2/3/21. Total Head Count: 1,815.
 COWS: \$46-\$67.00. BULLS: \$84-\$92.00.

BULLCALVES		HEIFERS	
4 mix.....	353@195.00	4 mix.....	363@162.00
4 blk.....	358@161.00	4 blk.....	358@161.00
8 blk.....	519@144.00	8 blk.....	519@144.00
4 blk.....	563@143.50	7 mix.....	539@139.00
7 mix.....	539@139.00	5 blk.....	596@136.00
9 blk.....	594@135.00	10 mix.....	594@135.00
6 bkbwf.....	643@131.50	8 blk.....	643@131.50
4 blk.....	630@130.25	23 blk.....	796@134.00
4 blk.....	656@127.50	7 bkbwf.....	779@133.50
7 wf.....	687@127.25	104 mix.....	783@133.00
7 mix.....	656@126.50	6 blk.....	772@132.25
8 mix.....	678@125.50	5 blk.....	794@132.00
4 mix.....	621@122.00	14 wf.....	774@131.00
6 blk.....	717@135.50	9 mix.....	778@113.00
22 blk.....	730@133.50	45 blk.....	827@135.50
38 blk.....	700@133.00	27 mix.....	818@134.25
26 mix.....	792@126.10	24 mix.....	810@133.50
16 mix.....	724@126.00	23 blk.....	808@132.50
49 bkbwf.....	768@125.85	56 blk.....	863@132.50
7 blk.....	754@125.75	32 mix.....	855@131.50
5 blk.....	705@125.50	15 mix.....	800@131.00
4 blk.....	758@125.50	12 mix.....	818@131.00
46 bkbwf.....	778@125.10	26 mix.....	835@130.25
6 mix.....	717@125.00	46 mix.....	839@130.00
10 mix.....	781@124.75	10 mix.....	848@130.00
9 bkbwf.....	753@124.00	123 blk.....	864@130.00
13 mix.....	803@124.50	6 bkbwf.....	862@129.50
7 blk.....	825@124.00	32 blk.....	856@129.00
54 blk.....	835@124.00	13 blk.....	882@128.75
10 mix.....	807@122.50	15 mix.....	815@127.25
12 mix.....	807@122.00	31 bkbwf.....	910@127.75
6 wf.....	846@120.50	15 mix.....	917@127.00
4 blk.....	859@120.50	14 blk.....	943@126.75
22 blk.....	820@120.00	12 wf.....	936@126.25
17 mix.....	892@119.75	5 mix.....	902@125.50
34 mix.....	945@119.50	7 blk.....	961@125.00

STEERS
 8 mix..... 458@166.00
 4 blk..... 484@159.00
 4 mix..... 503@162.00
 4 blk..... 596@156.00
 7 wf..... 595@148.00
 9 mix..... 618@153.00

8 blk..... 926@124.00
 18 bkbwf..... 955@121.75
 63 mix..... 1016@125.75
 27 mix..... 1013@124.00
 32 mix..... 1047@123.00
 14 mix..... 1043@122.75

EARLY CONSIGNMENTS FOR FEB. 17
 • 45 blk bred cows, 2 yrs & up, Spring calvers w/ a few Falls.
 • 20 blk & bwf bred hfrs, 800-1,000 lbs.
PLUS MORE BY SALE TIME!

THANK YOU FOR ALL OF YOUR CONTINUED SUPPORT!
 YOUR BUSINESS IS ALWAYS APPRECIATED!

For Cattle Appraisals Call:
BRODY PEAK, 620-343-5107 **GLENN UNRUH, 620-341-0607**
LYLE WILLIAMS, Field Representative, 785-229-5457
 WIBW 580 - 6:45 A.M. Thurs; KVOE 1400 - 6:30-6:45 A.M. Thurs. & Fri.
To see more consignments go to: emporialivestock.com



KARL LANGVARDT
 Cell: 785-499-2945

MITCH LANGVARDT
 Cell: 785-761-5814

LYNN LANGVARDT
 Cell: 785-761-5813



Grass & Grain Weather Report

Feb. 10, 2021

Seven Day Forecast	In-Depth Local Forecast	Today's Local Outlook																																																
WEDNESDAY Mostly Cloudy High: 18 Low: 2	Today we will see mostly cloudy skies, high of 18°, humidity of 57%. North wind 8 mph. The record high for today is 77° set in 1999. Expect mostly cloudy skies tonight, overnight low of 2°. North wind 3 to 6 mph. The wind chill for tonight could reach -7°.																																																	
THURSDAY Mostly Cloudy High: 17 Low: 3	Last Week's Almanac <table border="1" style="width: 100%; border-collapse: collapse;"> <thead> <tr> <th>Date</th> <th>HI/Lo</th> <th>Normals</th> <th>Precip</th> </tr> </thead> <tbody> <tr><td>1/29</td><td>52/23</td><td>42/18</td><td>0.00"</td></tr> <tr><td>1/30</td><td>53/35</td><td>42/18</td><td>0.01"</td></tr> <tr><td>1/31</td><td>36/22</td><td>42/18</td><td>0.00"</td></tr> <tr><td>2/1</td><td>38/25</td><td>42/18</td><td>0.00"</td></tr> <tr><td>2/2</td><td>52/24</td><td>42/18</td><td>0.00"</td></tr> <tr><td>2/3</td><td>64/30</td><td>43/18</td><td>0.00"</td></tr> <tr><td>2/4</td><td>38/22</td><td>43/19</td><td>0.00"</td></tr> </tbody> </table>	Date	HI/Lo	Normals	Precip	1/29	52/23	42/18	0.00"	1/30	53/35	42/18	0.01"	1/31	36/22	42/18	0.00"	2/1	38/25	42/18	0.00"	2/2	52/24	42/18	0.00"	2/3	64/30	43/18	0.00"	2/4	38/22	43/19	0.00"																	
Date	HI/Lo	Normals	Precip																																															
1/29	52/23	42/18	0.00"																																															
1/30	53/35	42/18	0.01"																																															
1/31	36/22	42/18	0.00"																																															
2/1	38/25	42/18	0.00"																																															
2/2	52/24	42/18	0.00"																																															
2/3	64/30	43/18	0.00"																																															
2/4	38/22	43/19	0.00"																																															
FRIDAY Mostly Cloudy High: 16 Low: -1	This Week's Sun & Moon Chart <table border="1" style="width: 100%; border-collapse: collapse;"> <thead> <tr> <th>Day</th> <th>Sunrise</th> <th>Sunset</th> <th>Moonrise</th> <th>Moonset</th> <th>Phase</th> </tr> </thead> <tbody> <tr><td>Wednesday</td><td>7:23 a.m.</td><td>5:58 p.m.</td><td>7:02 a.m.</td><td>4:50 p.m.</td><td>Full 2/27</td></tr> <tr><td>Thursday</td><td>7:22 a.m.</td><td>5:59 p.m.</td><td>7:41 a.m.</td><td>5:57 p.m.</td><td></td></tr> <tr><td>Friday</td><td>7:21 a.m.</td><td>6:00 p.m.</td><td>8:15 a.m.</td><td>7:03 p.m.</td><td></td></tr> <tr><td>Saturday</td><td>7:20 a.m.</td><td>6:01 p.m.</td><td>8:43 a.m.</td><td>8:06 p.m.</td><td></td></tr> <tr><td>Sunday</td><td>7:19 a.m.</td><td>6:03 p.m.</td><td>9:09 a.m.</td><td>9:06 p.m.</td><td></td></tr> <tr><td>Monday</td><td>7:17 a.m.</td><td>6:04 p.m.</td><td>9:33 a.m.</td><td>10:06 p.m.</td><td></td></tr> <tr><td>Tuesday</td><td>7:16 a.m.</td><td>6:05 p.m.</td><td>9:57 a.m.</td><td>11:04 p.m.</td><td></td></tr> </tbody> </table>	Day	Sunrise	Sunset	Moonrise	Moonset	Phase	Wednesday	7:23 a.m.	5:58 p.m.	7:02 a.m.	4:50 p.m.	Full 2/27	Thursday	7:22 a.m.	5:59 p.m.	7:41 a.m.	5:57 p.m.		Friday	7:21 a.m.	6:00 p.m.	8:15 a.m.	7:03 p.m.		Saturday	7:20 a.m.	6:01 p.m.	8:43 a.m.	8:06 p.m.		Sunday	7:19 a.m.	6:03 p.m.	9:09 a.m.	9:06 p.m.		Monday	7:17 a.m.	6:04 p.m.	9:33 a.m.	10:06 p.m.		Tuesday	7:16 a.m.	6:05 p.m.	9:57 a.m.	11:04 p.m.		
Day	Sunrise	Sunset	Moonrise	Moonset	Phase																																													
Wednesday	7:23 a.m.	5:58 p.m.	7:02 a.m.	4:50 p.m.	Full 2/27																																													
Thursday	7:22 a.m.	5:59 p.m.	7:41 a.m.	5:57 p.m.																																														
Friday	7:21 a.m.	6:00 p.m.	8:15 a.m.	7:03 p.m.																																														
Saturday	7:20 a.m.	6:01 p.m.	8:43 a.m.	8:06 p.m.																																														
Sunday	7:19 a.m.	6:03 p.m.	9:09 a.m.	9:06 p.m.																																														
Monday	7:17 a.m.	6:04 p.m.	9:33 a.m.	10:06 p.m.																																														
Tuesday	7:16 a.m.	6:05 p.m.	9:57 a.m.	11:04 p.m.																																														
SATURDAY Sunny High: 19 Low: 4	Weather History Feb. 10, 1978 - As much as eight inches of rain drenched Southern California, resulting in widespread flooding and mudslides. The heavy rainfall produced a wall of water that ripped through the mountain resort community of Hidden Springs, drowning at least 13 people.																																																	
SUNDAY Cloudy High: 20 Low: 3	Growing Degree Days <table border="1" style="width: 100%; border-collapse: collapse;"> <thead> <tr> <th>Date</th> <th>Degree Days</th> <th>Date</th> <th>Degree Days</th> </tr> </thead> <tbody> <tr><td>1/29</td><td>0</td><td>2/2</td><td>0</td></tr> <tr><td>1/30</td><td>0</td><td>2/3</td><td>0</td></tr> <tr><td>1/31</td><td>0</td><td>2/4</td><td>0</td></tr> <tr><td>2/1</td><td>0</td><td></td><td></td></tr> </tbody> </table>	Date	Degree Days	Date	Degree Days	1/29	0	2/2	0	1/30	0	2/3	0	1/31	0	2/4	0	2/1	0																															
Date	Degree Days	Date	Degree Days																																															
1/29	0	2/2	0																																															
1/30	0	2/3	0																																															
1/31	0	2/4	0																																															
2/1	0																																																	
MONDAY Scattered Snow High: 17 Low: 2	Local UV Index 0-2: Low, 3-5: Moderate, 6-7: High, 8-10: Very High, 11+: Extreme Exposure																																																	
TUESDAY Sunny High: 14 Low: -3																																																		

Beef tenderness research identifies factors that influence eating quality

By Lisa Moser
K-State meat scientists studied three beef cuts to see how fat content, connective tissue characteristics and muscle structure influence tenderness.

There is nothing like biting into a nice juicy steak where the savory flavors burst in your mouth, but if that meat is tough to chew the experience may be a disappointment.

In the case of beef, all cuts are not created equal in terms of tenderness.

To learn more, Kansas State University meat scientists, with the support of beef checkoff funding, studied three cuts of beef looking at how fat content, muscle structure and aging influence tenderness.

"There is not a single biochemical trait (tenderness contribution factor) that can be used to predict tenderness for all beef cuts," said Michael Chao, K-State meat science researcher and assistant professor in the Department of Animal Sciences and Industry.

The study focused on three cuts - the striploin (also known as New York

Strip), tri-tip and heel. "Tenderness is very much driven by the individual cut. For example, with the striploin overall tenderness is strongly influenced by lipid (fat) content, but heel overall tenderness is largely influenced by aging time," Chao said.

With a better understanding of how each cut needs to be managed, the beef industry can pass along that information to consumers, said Chao.

For example, cuts with extensive muscle fiber shortening may be stretched while beef that has a poor aging response

should not be aged, said Chao. He added that some cuts with high connective tissue need to be prepared with a moist-heat cooking method.

"It is more important than ever to find markers to assist the industry and consumers to determine the ideal tenderness management techniques to ensure a consistent eating quality of beef," Chao said.

These research results are included in the proceedings of the virtual 2021 Cattlemen's Day planned for March 5. To learn more, go to, www.asi.k-state.edu/cattlemens-day.

Kansas sheep and goat survey released

All sheep and lamb inventory in Kansas on January 1, 2021 totaled 70,000 head, down 3,000 from last year, according to the USDA's National Agricultural Statistics Service. Breeding sheep inventory totaled 45,000 head, down 4,000 from last year. Ewes one year and older totaled 37,000 head, down 3,000 from the previous year. Rams one year and older totaled 2,000 head, down 500 from last year. Total replacement lambs totaled 6,000 head, down 500 from last year.

Market sheep and lambs totaled 25,000 head, up 1,000 from last year. A total of 2,000 head were mature sheep (one year and older) while the remaining 23,000 were under one year. Market lamb weight groups were estimated as follows: 8,000 were under 65 pounds; 2,500 were 65-84 pounds;

2,000 were 85-105 pounds; 10,500 were over 105 pounds.

The 2020 lamb crop totaled 45,000 head, down 2,000 from 2019. The 2020 lambing rate was 113 per 100 ewes one year and older, compared with 127 in 2019. Sheep deaths totaled 3,000 head, down 1,000 from last year. Lamb deaths totaled 7,000 head, down 500 from last year. Sheep and lambs slaughtered on farm totaled 2,000 head, unchanged from last year.

Shorn wool production during 2020 was 240,000 pounds, down 15,000 from 2019. Sheep and lambs shorn totaled 39,000 head, down 3,000 from 2019. Weight per fleece was 6.2 pounds, up 0.1 from 2019. The average price paid for wool sold in 2020 was \$0.65 per pound, compared with \$0.80 in 2019. The total value of wool

produced in Kansas was 156,000 dollars in 2020. All meat and other goat and kid inventory in Kansas on January 1, 2021, totaled 40,000 head, down 3,000 from last year. Milk goat inventory totaled 4,000 head, down 200 from last year.

ANNUAL CONSIGNMENT AUCTION

SATURDAY, MARCH 27, 2021
DURHAM, KANSAS (North edge)
Annual Farm Machinery & Farm Miscellaneous Auction held in conjunction with G&R IMPLEMENT.
Call NOW to CONSIGN & Advertise Your Farm Machinery, Trucks, Trailers, Livestock Equipment, Farm Tools & Misc.

See www.leppke.com & watch future ads for more details!
Contact: G&R Implement: 620-732-3245 or Leppke Realty & Auction: 620-947-3995
LEPPKE REALTY & AUCTION
501 S. Main, Hillsboro, KS 67063 - 620-947-3995
LYLE LEPPKE, Auctioneer/Broker - 620-382-5204;
ROGER HIEBERT, Auctioneer/Sales - 620-382-2963

AUCTION

RURAL REAL ESTATE & PERSONAL PROPERTY

FRIDAY, FEBRUARY 12, 2021 - 11:00 AM
AUCTION LOCATION: 17080 SW Purity Springs Road DOUGLASS, KANSAS
ESTATE OF CALVIN MARKEL, SELLER

LAND: 4.3 ACRES * BLACKTOP FRONTAGE * UTILITIES AVAILABLE
OLD FARM HOUSE, BUILDINGS, WATER WELL & HEAVY TIMBER

PERSONAL PROPERTY INCLUDES: 150+ GUNS * 50+ OLD VEHICLES * SCRAP IRON * ANTIQUES * TOOLS * ARCHITECTURAL IRON & WOOD * 200+ TRAPS * CAR PARTS * ADVERTISING * TRACTORS * PRIMITIVES
VERY LARGE AUCTION, MANY ITEMS SELLING IN BULK

JOE SUNDGREN
316.321.7112
JEREMY SUNDGREN
316.377.0013

Visit our Website for more details: www.sundgren.com

Eureka Livestock Sale

P.O. Box 267 Eureka, KS 67045
620-583-5008 Office 620-583-7475

Sale Every Thursday at 11:30 a.m. Sharp
Like Us On Facebook!

On Thursday, February 4th, we had 886 head of cattle on an active market.

STEERS	6 blk 820@132.50	10 bkChr 660@134.00
2 bwf/bf 530@174.00	15 bk/bwf 830@132.00	8 bk/bwf 668@133.50
4 bkRd 369@172.00	6 BrndlX 822@130.75	10 bk/bwf 681@132.50
4 bk/bwf 560@169.75	7 bk/bwf 883@130.75	6 blk 733@131.00
4 blk 598@158.50	60 mix 922@127.00	33 mix 712@129.00
5 blk 571@158.00	6 bk/bwf 982@124.25	6 bk/bwf 740@127.75
13 bk/bwf 583@157.25		21 bkRd 668@126.75
3 bwf 607@153.50	HEIFERS	29 bk/bwf 821@126.50
10 blk 637@150.50	8 bk/bwf 519@154.50	12 bk/bwf 702@126.25
5 Red 647@141.50	4 bk/bwf 500@154.00	7 blk 748@125.50
9 bk/bwf 677@139.75	7 blk 534@148.00	63 bk/bwf 856@123.50
13 blk 685@138.75	7 bk/bwf 558@146.00	8 bk/bwf 855@122.85
4 bk/bwf 744@138.00	8 bkRd 529@144.50	12 bk/bf 965@116.00
14 blk 775@135.50	9 blk 601@136.00	4 bk/bwf 1136@106.00
6 blk 788@134.00	9 blk 623@136.00	6 blk 1042@96.00
28 bk/bwf 738@134.00	7 bk/bwf 641@134.50	

Butcher Cows: \$30-\$72.00, mostly \$55-\$68, steady to \$2 higher.
Butcher Bulls: \$61-\$85.50, mostly \$82-\$85.
Packer cows & bulls selling very active.
Preg cows: \$800-\$1,200.

BUTCHER COWS	2 blk 1393@66.00
1 blk 1350@72.00	2 blk 1400@66.00
1 blk 1195@70.00	BUTCHER BULLS
1 blk 1540@70.00	1 blk 1665@85.50
1 Gry 1180@69.00	1 CharX 1565@85.00
2 bk/bwf 1323@68.50	1 bwf 1330@85.00
2 blk 1603@68.00	1 rbf 1645@85.00
2 blk 1148@67.50	1 Gry 1410@85.00
2 blk 1505@66.00	1 bwf 1275@84.00

WABAUNSEE COUNTY LAND AUCTION

SATURDAY, MARCH 13, 2021 * 5:00 PM

AUCTION LOCATION: Wabaunsee County Fairgrounds, ALMA, KANSAS

LEGAL: S07, T13, R09E E1/2 NW1/4 LESS R/W (access from Bunnytrail Rd)

DESCRIPTION
This beautiful piece of the Flint Hills offers 76.5 +/- acres of pasture, a nice pond, and is fully fenced. *Whether you are looking to add to your operation or are getting started, this property is a must-see.*

SELLER:
JEANNINE McCLELLAN

REAL ESTATE TERMS: Property sells AS IS, WHERE IS. 10% non-refundable down payment is required day of sale by check. Buyer must be able to close on or before April 13, 2021. Buyer needs bank letter of loan approval or funds verification. Cost of Owners Title Policy to be split equally between Buyer and Seller. Buyer is responsible for understanding zoning and building regulations associated with the property prior to the auction. All announcements day of sale take precedence over written materials. Crossroads Real Estate & Auction LLC is representing the Seller.

Check us out on Facebook & Online for more info www.kscrossroads.com
www.facebook.com/KScrossroadsauctions

Crossroads Real Estate & Auction ANDRIA ZIMMERMAN, Listing Agent, 720-648-2249
TERRI HOLLENBECK, Broker/Owner, 785-223-2947
ANDREW SYLVESTER, Auctioneer, 785-456-4352

Holton Livestock Exchange, Inc.

1/2 mile East of Holton, KS on 16 Highway
Livestock Auction every Tuesday at 12 NOON
STARTING TIME: 12:00 NOON

MARKET REPORT FOR TUESDAY, FEBRUARY 2, 2021
RECEIPTS: 1,273 CATTLE
FOR FULL RESULTS, VISIT OUR WEBSITE:
WWW.HOLTONLIVESTOCK.COM

STEERS	7 blk str 790@131.50
1 r/w str 340@195.00	21 char str 843@129.50
11 blk bwf str 460@185.00	9 blk red str 853@127.50
3 blk bwf str 456@179.00	
8 blk str 473@174.00	HEIFERS
10 blk str 514@172.00	2 blk hfrs 287@175.00
18 blk str 496@172.00	2 blk hfrs 405@169.00
7 blk str 546@171.00	5 blk hfrs 385@158.00
6 blk str 580@162.50	5 blk red hfrs 406@154.00
26 blk str 591@156.00	7 herf hfrs 417@152.00
8 r/w str 637@154.50	11 blk hfrs 672@149.00
8 blk str 618@154.00	55 blk hfrs 559@142.00
5 blk bwf str 642@146.50	8 blk hfrs 643@138.00
14 blk red str 682@145.50	4 blk hfrs 712@137.50
28 blk str 665@145.00	13 blk hfrs 845@136.00
7 blk str 701@143.50	11 blk hfrs 713@132.50
10 blk str 692@143.50	14 r/w bwf hfrs 590@129.50
11 blk bwf str 700@141.00	15 blk hfrs 631@128.00
10 blk str 755@139.75	5 blk hfrs 724@125.00
11 blk bwf str 748@138.75	10 char hfrs 749@125.00
20 blk str 745@138.00	7 blk bwf hfrs 672@124.50
16 blk str 749@136.00	6 char blk hfrs 678@123.50
26 blk bwf str 794@135.85	10 blk hfrs 740@121.50

Dan Harris, Auctioneer & Owner • 785-364-7137
Danny Deters, Corning, Auct. & Field Rep • 785-868-2591
Dick Coppinger, Winchester, Field Rep. • 913-774-2415
Steve Aeschliman, Sabetha, Field Rep. • 785-284-2417
Larry Matzke, Wheaton, Field Rep. • 785-268-0225
Craig Wischropp, Horton, Field Rep. • 785-547-5419
Barn Phone • 785-364-4114
WEBSITE: www.holtonlivestock.com
EMAIL: dan@holtonlivestock.com
View our auctions live at "Imauctions.com"

Central Livestock

811 N. Main St.
South Hutchinson, Ks

www.centrallivestockks.com

Office: 620-662-3371
or Matt Hoffman (Owner): 620-727-0913
Hay Auction- Every Tuesday at 9:00 a.m.
Cattle Auction- Every Tuesday at 10:00 a.m.
Hog/Sheep/Goat Auction- Every 3rd Saturday
Horse/Tack Auction- Every 1st Saturday

Sat., Feb. 20th - Hog/Sheep/Goat Sale
Tues., Feb. 23rd - Holstein Special
Sat., March 6th - Horse & Tack Sale
Tues., March 9th - Calf/Yearling Special

LAND AUCTION

947 +/- Acres of Flint Hills Grass in 2 Tracts in Chase County

FRIDAY, MARCH 5, 2021 - 10:00 AM

AUCTION LOCATION: Chase County Community Building at Swope Park - COTTONWOOD FALLS, KS 66845

SELLERS: FAMILY OF VIRGINIA L. GRIFFITHS, FLORENCE LUELLA SMITH & MINNIE R. WESTBROOK
TRACT #1: 708.13 +/- acres. BRIEF LEGAL: All of Sec 12 and the N/2 of Sec 11 lying east of turnpike in T22S R08E, Chase Co.
TRACT #2: 239.40 +/- acres. BRIEF LEGAL: The N/2 of Sec 11 lying west of turnpike in T22S R08E, Chase Co.
Located in the heart of the Flint Hills just east of Matfield Green situated in the middle of the big country with miles and miles of rolling hills all around. Pastures in this area are known for its great cattle gains. This is what you think of with Flint Hills pastures, good elevation, good water and a great clean stand of grass. Come and see how these top quality native bluestem and mixed grass pastures can work for you.
See website for full listing & photos at www.Lepcke.com or www.GriffinRealEstateAuction.com
www.leppke.com

LEPPKE REALTY & AUCTION

501 S. Main, Hillsboro, KS * 620-947-3995
LYLE LEPPKE, Broker & Auctioneer - 620-382-5204
ROGER HIEBERT, Sales Assoc. & Auctioneer - 620-382-2963

CHUCK MAGGARD, Sales/Auctioneer, Griffin Real Estate, Office: 305 Broadway, Cottonwood Falls, KS 66845
Cell: 620-794-8824
RICK GRIFFIN, Auctioneer & Auction, Phone: 620-273-6421
Cell: 620-343-0473, griffinrealestateauction@gmail.com, Fax: 620-273-6425, Toll-Free: 866-273-6421

EL DORADO LIVESTOCK AUCTION, INC.

316-320-3212
Fax: 316-320-7159
2595 SE Highway 54, P.O. Box 622, El Dorado, KS 67042

Market Report - Sale Date 2-4-21. 429 Head.
300-400 lb. steers, \$165-\$184; heifers, \$140-\$180; 400-500 lb. steers, \$152-\$181; heifers, \$143-\$167; 500-600 lb. steers, \$140-\$180; heifers, \$122-\$158; 600-700 lb. steers, \$137-\$153; heifers, \$123-\$138; 700-800 lb. steers, \$130.50-\$141.50; heifers, \$112-\$124.25; 800-900 lb. steers, \$107-\$131.50; heifers, \$100-\$113.50.
Trend on Calves: Steady to \$7 higher on light test. **Trend on Feeder Cattle:** Mostly \$2-\$3 lower w/light test. **Butcher Cows:** high dressing cows \$55-\$64; Avg. dressing cows \$45-\$55; low dressing cows \$20-\$35. **Butcher Bulls:** Avg. to high dressing bulls \$61-\$78. **Trend on Cows & Bulls:** \$3-\$4 higher w/light test.
Some highlights include:

HEIFERS	2 blk 308@180.00	2 blk 453@181.00
9 mix 424@164.00	6 mix 526@180.00	
9 mix 498@149.50	14 mix 560@170.00	
9 mix 566@135.00	26 mix 645@148.50	
21 mix 628@132.50	15 blk 717@141.00	
30 mix 773@124.25	8 char 760@136.50	
5 mix 883@113.50	60 mostly blk 886@130.40	

REGULAR SALE: FEBRUARY 11, 2021
Expecting 800 head!
• 30 cow/calf pairs, 2-6 week old calves
• 70 bred cows, 2 through running age, bred blk
• 70 mixed steers & heifers, 400-700 lbs.

OUR NEW WEBSITE IS UP & RUNNING!
UPDATED DAILY WITH NEW CONSIGNMENTS!
WWW.ELDORADOLIVESTOCK.COM

We welcome your consignments!
If you have cattle to consign or would like additional information, please call the office at 316-320-3212
Check our website & Facebook for updated consignments: www.eldoradolivestock.com
To stay up to date on our latest announcements you can "Like" us on Facebook

Josh Mueller, Owner/Manager (316) 680-9680	Steven Hamlin (602) 402-6008 (H) (620) 222-1199 (M)
Chris Locke (316) 320-1005 (H) (316) 322-0675 (M)	Van Schmidt, Fieldman (620) 367-2331 (H) (620) 345-6879 (M)

Cattle Sale Every Thursday 11:00 AM

EARLY CONSIGNMENTS FOR FEB. 18

- 100 blk Red Angus hfrs, 750-850 lbs., H.R., longtime weaned & vac.
- 70 blk Red Angus str, 850-950 lbs., H.R., longtime weaned & vac.
- 65 bk/bwf str & hfrs, 500-700 lbs., H.R., longtime weaned & vac.

We appreciate your business!

Ron Ervin - Owner-Manager
Home Phone - 620-583-5385
Mobile Cell 620-750-0123
Austin Evenson - Fieldman
Mobile Cell 620-750-0222
If you have any cattle to be looked at call Ron or Austin

