

# Grass & Grain Weather Report

Aug. 19, 2020

### Seven Day Forecast

**WEDNESDAY**  
Partly Cloudy  
High: 83 Low: 61

**THURSDAY**  
Mostly Sunny  
High: 84 Low: 62

**FRIDAY**  
Few Showers  
High: 92 Low: 68

**SATURDAY**  
Few Showers  
High: 90 Low: 67

**SUNDAY**  
Few Showers  
High: 84 Low: 63

**MONDAY**  
Few Showers  
High: 79 Low: 56

**TUESDAY**  
Partly Cloudy  
High: 90 Low: 73

### In-Depth Local Forecast

Today we will see partly cloudy skies, high of 83°, humidity of 51%. Light winds. The record high for today is 105° set in 2003. Expect partly cloudy skies tonight, overnight low of 61°. Light winds. The record low for tonight is 48° set in 2001.

#### Last Week's Almanac

Date	Hi/Lo	Normals	Precip
8/7	88/74	91/67	0.00"
8/8	97/76	91/66	0.00"
8/9	91/74	91/66	0.15"
8/10	88/76	90/66	0.00"
8/11	92/74	90/66	0.00"
8/12	89/71	90/66	0.00"
8/13	90/70	90/66	0.05"

Rainfall ..... 0.20"  
Normal rainfall ..... 0.87"  
Departure ..... -0.67"  
Average temp ..... 82.1°  
Average normal ..... 78.3°  
Departure ..... +3.8°

### Today's Local Outlook

### This Week's Sun & Moon Chart

Day	Sunrise	Sunset	Moonrise	Moonset	Last
Wednesday	6:44 a.m.	8:15 p.m.	7:08 a.m.	9:06 p.m.	9/10
Thursday	6:45 a.m.	8:14 p.m.	8:21 a.m.	9:39 p.m.	
Friday	6:45 a.m.	8:12 p.m.	9:35 a.m.	10:11 p.m.	
Saturday	6:46 a.m.	8:11 p.m.	10:48 a.m.	10:41 p.m.	
Sunday	6:47 a.m.	8:09 p.m.	12:00 p.m.	11:14 p.m.	New
Monday	6:48 a.m.	8:08 p.m.	1:12 p.m.	11:49 p.m.	9/17
Tuesday	6:49 a.m.	8:06 p.m.	2:23 p.m.		

### Local UV Index

0-2: Low, 3-5: Moderate, 6-7: High, 8-10: Very High, 11+: Extreme Exposure

### Weather History

Aug. 19, 1788 - A small but powerful hurricane inflicted great havoc upon forests along a narrow track from New Jersey to Maine. A similar storm track today would cause extreme disaster in the now populated area.

### Growing Degree Days

Date	Degree Days	Date	Degree Days
8/7	31	8/11	33
8/8	36	8/12	30
8/9	32	8/13	30
8/10	32		

# Gov. Kelly applauds Great Plains Manufacturing Salina expansion

Governor Laura Kelly congratulated Kubota and its subsidiary Great Plains Manufacturing on the announcement of a new manufacturing facility in Salina.

This project will create 130 new full-time jobs and result in more than \$43 million in capital investment, with potential for additional jobs and investment in the future. The company will acquire an existing building and invest in significant renovations.

"From day one, my administration has prioritized rebuilding Kansas' foundation," Kelly said. "We know global investment and trade are critical to the state's economy and I'm committed to growing the strong relationship between Kubota, Great Plains Manufacturing, and the state of Kansas, and welcome the opportunity to work together to support this great company and the region."

"Great Plains Manufacturing is a great Kansas company, and Kubota has been a wonderful partner to Kansas for years," Secretary of Commerce David Toland said. "I am so grateful that they have chosen our state for this manufacturing investment. Along with last year's Edgerton expansion and the new plant in Abilene, this move proves Kubota understands the enormous value of the strategic advantages the state of Kansas provides for manufacturing and distribution."

In Kansas since 1976, Great Plains Manufacturing is a Salina-based agricultural equipment manufacturer with multiple plants in north-central Kansas. The majority of its plants are located within small, rural Kansas communities. The company was acquired by Kubota Corporation of Japan in 2016 after a longtime partnership between the two companies.

In August 2019, Governor Kelly and Secretary Toland attended the grand opening of Kubota's new two-million-square-foot distribution center in Edgerton. Toland and members of the Commerce International Division then visited Kubota headquarters in Osaka, Japan in September 2019 to thank Kubota for their presence in Kansas and to make the case for additional investment in the state. With the acquisition of Great Plains and the construction of the new distribution center, Kubota currently employs over 1,600 Kansans.

Subscribe to  
**GRASS & GRAIN**  
ONLINE  
at:  
[grassandgrain.com](http://grassandgrain.com)

## PERSONAL PROPERTY AUCTION

**SATURDAY, AUGUST 29, 2020 — 10:00 AM**  
AT 1215 S DIETRICH, CHAPMAN, KANSAS 67431

Directions: FROM I-70 Exit 290-Milford Lake Rd. for .3 mi, Left on Easy Jack Rd for 1 mile, Right on Dietrich Rd .5 mi, sale location on the Right. FROM JUNCTION CITY on K-18 5 mi West to Milford Lake Rd S 2 mi to Easy Jack Rd W for 1 mile, Right on Dietrich Rd. 5 mi, sale location on the Right.

**FURNITURE & APPLIANCES:** Gaming table; linens; 33 record albums; Corningware; Pyrex; suitcases; hardback books; Hoosier type kitchen cabinet; kitchen table w/6 chairs; DVD/VHS player; VHS movies; 2 brown Lane recliners; Pine dresser w/mirror; lamps; vacuums; 2 upright cedar closets; Crosley refig./freezer; elec. stove; GE microwave; Whirlpool refig./freezer; Pine kitchen table; Pine hutch; bookcase; Oak office desk; Oak office chair; queen bed w/chest of drawer, dresser w/mirror & 2 night stands; Oak table w/4 chairs; sleeper couch; washstand w/marble top; GE washer; Crosley dryer. **TOOLS & MISC.:** JD X475 lawn tractor; 2 Louisville step ladders & other ladders; Stihl F5 38 curved shaft string trimmer; Parmac 5000W Generator-like new; cordless drill 18V; 1/2 & 3/8 drive socket sets; Craftsman wrenches; drill bits; work bench on wheels; elec. drills-1/2" & 3/8"; shop vacs; concrete yard art; (3) 10' feed bunks; 2 oval water tanks; JD 4 whl. trailer; 3T floor jack; gas power washer; Craftsman upright air comp, 110v; table saw; used lumber-2x4 & 2x6; cast iron kettle; wheelbarrow; BBQ grill w/cabinet; pull behind garden/lawn sprayer; alum. ramps; high lift jack; Xmas decor & MORE!

**LOUISE & THE LATE LOREN BUXMAN**

Terms: Cash or Check Only.  
Lunch by White City Christian Church

**JAY E. BROWN, Auctioneer,**  
785-762-2266 • C: 785-223-7555  
GREG HALLGREN, 785-499-5376  
KansasAuctions.net • E-mail: [jbrown@ksbroadband.net](mailto:jbrown@ksbroadband.net)

**BROWN**  
Real Estate & Auction Service LLC  
2323 North Jackson  
Junction City, KS

## AbileneMachine®

### Ag Replacement Parts

**40 YEAR ANNIVERSARY**

### Q-Power® Belts

- Proven to be able to perform in any harvest condition
- Made with the highest-quality materials and the most advanced manufacturing processes

**Abilene Machine Draper Belt Prices Blow Away the Competition**

We stock a super selection of heavy-duty draper belts for Ford®/New Holland®, Case IH®, John Deere® and MacDon®

### Heavy-Duty Augers

Most augers and grain-handling parts are made in-house. You'll be receiving durable parts made here in the USA!

**Toll Free: 800-255-0337 • AbileneMachine.com**

# MANHATTAN COMM. CO. INC. CATTLE AUCTION EVERY FRIDAY

**1-800-834-1029** **STARTING 10:00 A.M. ON WEIGH COWS**  
**Toll-Free** **FOLLOWED BY STOCKER FEEDERS — 11:00 A.M.**  
**OFFICE PHONE 785-776-4815 • OWNERS MERVIN SEXTON & JOHN CLINE**

Our CONSIGNMENTS can now be viewed after 12 Noon on Mondays by going to [www.grassandgrain.com](http://www.grassandgrain.com) & logging onto the online subscription

<b>We had a nice run of cattle for our sale held Friday, August 14th. Light steer and heifer calves sold at steady to stronger prices on a lighter offering. The bulk of the run was Fall calves and feeder steers which all sold from steady to \$3 higher prices. Cull cows sold steady.</b>	Cave City, AR 62 blk 834@144.25	Frankfort 1 Cross 1260@62.50	Paxico 1 blk 1855@79.00
	Manhattan 10 Char 792@143.50	Westmoreland 1 blk 1090@61.00	<b>COW/CALF PAIRS</b>
	Burns 14 blk 780@142.50	Alma 1 blk 1225@60.50	<b>AGE</b>
	Frankfort 53 Cross 865@141.75	Frankfort 1 Cross 1270@60.00	Manhattan 4 blk 4 @1710.00
	Alma 23 blk 792@141.00	Frankfort 1 Cross 1135@59.50	Beattie 2 blk 3&5 @1525.00
	Leavenworth 12 Cross 681@140.50	Westmoreland 1 blk 1120@59.00	<b>BRED COWS</b>
	Wamego 66 Cross 855@139.35	Frankfort 1 Cross 1175@57.00	<b>AGE BRED</b>
	Cave City, AR 93 blk 920@136.75	Westmoreland 1 blk 1245@57.00	Manhattan 9 blk 3-4 7-8 @1775.00
	Leavenworth 28 blk 874@135.00	Frankfort 1 Cross 1170@56.50	Manhattan 10 Rd Ang 3-6 7-8 @1700.00
	Centralia 6 blk 971@133.25	Frankfort 1 Cross 1205@53.00	Manhattan 2 Heref 3 7-8 @1650.00
	Frankfort 17 mix 965@131.00	Frankfort 1 bwf 1255@52.00	Wamego 6 blk 3-4 7-8 @1600.00
	Frankfort 9 mix 977@131.00	<b>BULLS — 1,800-2,175 LBS.</b>	Manhattan 10 blk 5-6 7-8 @1525.00
	Manhattan 4 Char 882@130.00	Alma 1 blk 1885@94.50	Wamego 8 blk 5 7-8 @1500.00
	Alma 7 blk 916@126.00	Alma 1 Heref 2020@91.50	Wamego 9 blk 5 5-6 @1475.00
		Kansas City 1 blk 2155@87.50	Wamego 3 Cross 5 5 @1200.00
		St. George 1 blk 2025@83.50	<b>BABY CALVES</b>
		Frankfort 1 Heref 1800@81.00	McLouth 2 blk @400.00

### EARLY CONSIGNMENTS FOR AUG. 21

- 40 blk str & hfrs, all shots, 700-800 lbs.
- 25 blk str & hfrs, off grass, long weaned, 700-850 lbs.
- 46 blk str & hfrs, long weaned, 2 rds shots, 600-700 lbs.
- 36 home raised Simm Angus cross str, long weaned, 2 rds shots, 550-650 lbs.
- 62 blk bwf str & hfrs, 2 rds shots, no implants, 650-750 lbs.
- 25 blk, bwf & wf feeder str, long weaned, 2 rds shots, 700-900 lbs.

**TO SELL AT 11:00 AM**

100% Registered Holstein Dairy Retirement Dispersal for Kieth and Donna Olson consisting of 22 holstein milking cows from 1st to 4th lactation, 5 dry springer cows, 3 bred hfrs, 10 breeding age hfrs, 7 hfrs 600-750 lbs, 4 hfrs 200-350 lbs, 2 baby hfr calves. Milk weights available after Aug. 11th. All home raised. All AI sired. 60 years AI breeding, 30 years with Select Sires. For more information please call Keith Olson 785-499-6862

- 6 Hols bred hfrs, 6-8 months.
- 6 Hols hfrs, 375-450 lbs.
- (2) 1st calf Holstein hfrs, AI'd w/ sexed semen for Nov. calving.

**SELLING AT 12:00 NOON**

- 47 Choice (OCV) Montana origin Angus 2nd calf hfrs, bred to Vermillion Ranch & Stevenson Basin Angus bulls, due Sept. 1 for 50-day calving period
- 20 blk, blk Baldy Fall calving cows, 7-8 years, bred Angus for Sept.-Oct. calving.
- 17 Registered blk Angus cows, 3-10 yrs, bred Registered Angus for Sept.-Oct. calves.
- 2 Registered Red Angus cows, 6-8 yrs, bred for Sept.-Oct. calves.
- 1 Registered Char cow (10 yrs) with late Spring Commercial calf by side.
- 3 Registered blk Angus cows, 3-10 yrs, with late Spring Commercial calves by side.
- 4 Blk Fall bred cows, SS, bred for late Sept.-Oct. calves.

For complete information on registered cows, please visit [mcclivestock.com](http://mcclivestock.com)

### EARLY CONSIGNMENTS FOR AUG. 28

- 72 choice blk bwf feeder hfrs, 850-900 lbs.

## VISIT US ON THE WEB FOR DAILY CONSIGNMENT UPDATES AT [WWW.MCCLIVESTOCK.COM](http://WWW.MCCLIVESTOCK.COM)

FIELD REPRESENTATIVES			
<b>JOHN CLINE</b> ONAGA 785-889-4775 Cell: 785-532-8381	<b>BRENT MILLER</b> ALMA 785-765-3467 Cell: 785-587-7824	<b>MERVIN SEXTON</b> MANHATTAN Cell: 785-770-2622	<b>TOM TAUL</b> MANHATTAN 785-537-0036 Cell: 785-556-1422
<b>SAM GRIFFIN</b> BURNS 620-726-5877 Cell: 620-382-7502	<b>ALAN HUBBARD</b> OLSBURG 785-468-3552 Cell: 785-410-5011	<b>BILL RAINE</b> MAPLE HILL 785-256-4439 Cell: 785-633-4610	<b>BRYCE HECK</b> LINN 785-348-5448 Cell: 785-447-0456
		<b>JEFF BROOKS</b> BEATTIE 785-353-2263 Cell: 785-562-6807	<b>DAN COATES</b> BALDWIN 785-418-4524
			<b>ANDREW SYLVESTER</b> WAMEGO 785-456-4352

## Record U.S. sorghum sales to China reported

U.S. Department of Agriculture Foreign Agricultural Service data issued last week shows U.S. sorghum purchases rang in the biggest week ever at almost 32 million bushels sold. That topped the previous record week at 23 million bushels, which took place in December 2014.

"U.S. sorghum farmers should be encouraged by these continued sales to China," said National Sorghum Producers and Sorghum Checkoff CEO Tim Lust. "We are making improvements to our crop not only from a yield and technology standpoint, but also through quality measures, which are translating directly to international buyers and noticeably improved basis numbers across the country."

According to reports from the USDA, sorghum sales for the current market year totaled 282,386 mt along with 527,500 mt for the coming 2020-2021 marketing year. All totaled, sorghum sales for the week were 809,886 mt or about 32 million bushels. This one week of sales reflects approximately 9 percent of the total U.S. sorghum production this year.

"These sales commitments are profound, and like in any other high demand situation, we expect to see basis increases enhance sorghum acres next year," said Sorghum Checkoff executive director Florentino Lopez. "The U.S. Grains Council and Sorghum Checkoff remain fully engaged with Chinese buyers to help promote U.S. sorghum and provide technical information to leverage future sales while continuing to build future markets in Vietnam, Kenya, India and domestically, as well."

Actual shipments to China were also at a seven-day period marketing-year high of 479,200 mt, according to USDA, and new crop sorghum sales are the highest they have been in five years.

## FARMLAND AUCTION

**292.89 ac. of Western Clay County Cropland & Habitat**  
**THURSDAY, SEPTEMBER 10, 2020 — 7:00 PM**  
Auction to be held at the Clifton American Legion,  
3470 Frontier Rd., CLIFTON, KANSAS 66937

**TRACT 1:** The NE4 of Section 2-7-1, Clay County, Kansas less a parcel of land in the northeast corner. This tract is located in Bloom Township and consists of 137.13 acres according to FSA records. There are 133.97 acres classified as cropland which includes 126.37 tillable acres and 7.60 acres of waterways. There are 3.16 acres of buffer strips around the perimeter of the farm. Soil types are about 95% Class 2 Crete (Cs) and 5% Class 3 Crete (Ct). This farm is well located 6 miles south of Clifton, Kansas along the blacktop. It is situated west of Frontier Rd (Clifton Rd.) and south of 25th Rd. From Clay Center go 7 miles west to the Clifton Road (Frontier Rd.), then 6.5 miles north to the southeast corner of the tract. This is a very nice farm. 2019 taxes were \$2,819.30.

**TRACT 2:** The NW4 of Section 29-6-1, Clay County, Kansas. This tract is located in Mulberry Township and consists of 155.76 acres according to FSA records. There are 150.55 acres classified as cropland which includes 134.00 cultivated acres and 16.55 acres of waterways. There are 5.21 of habitat. Soil types are about 45% Class 3 Crete (Ct), 25% Class 4 Crete (Cx), 15% Class 2 Crete (Cs), and 15% Class 5 Hobbs (Hn). This a good upland farm just a mile east of the Cloud County line. From Tract 1 go one mile north to 26th Rd., then 4 miles west to Buffalo Rd. and one mile north to the northwest corner of the tract. From Clifton, Kansas go 3 miles south to 28th Rd. then 4 miles west and 1 mile south to the northwest corner of the tract. 2019 taxes were \$2,602.28.

**TERMS:** Contracts to close on or before November 1st, 2020. The buyer is to pay 10% down day of sale with the balance due at closing. Title insurance and escrow fees are to be paid 1/2 each by the seller and the buyer. The seller will pay 2020 and all prior years property taxes. 2021 property taxes are to be paid by the buyer. Bill Peterson is the present tenant on both tracts and the farm will be sold subject to his rights. The buyer will get possession upon completion of the 2020 fall harvest. The buyer(s) will be allowed to plant crops prior to closing. These farms are in compliance with FSA program requirements. The buyer(s) will receive all mineral rights. **The contract, deed and down payment will be escrowed at Clay County Abstract & Title Company, 610 5th Street, Clay Center, Kansas 67432.** Announcements made sale day to take precedence over printed matter. The sellers and their agents are not responsible for accidents. This farm will sell to the highest bidder. The auction firm is working for the sellers.

Go to [kretzauctions.com](http://kretzauctions.com) or [kansasauctions.net](http://kansasauctions.net) for the listing, FSA maps & any additional information, updates or changes

**LESLIE W. ROOT LIVING TRUST, SELLER**

Auction conducted by: Clay County Real Estate  
CALL: Greg Kretz, Salesman & Auctioneer, 785-630-0701

## Agriculture may already be climate-neutral

A new article in *Agronomy Journal* authored by Linköping University associate professor Per Frankelius said that the 2014 U.N. Intergovernmental Panel on Climate Change (IPCC) claims about agriculture and greenhouse gases is severely flawed, noting that the IPCC report did not take into account photosynthesis.

"The fact that the carbon is bound in the crops, which at the same time produce oxygen, just as a growing forest does, is a positive effect that is not included in the IPCC calculations," Frankelius said. "These only consider the greenhouse gases that have a negative impact on the climate. This is also the case in The Greenhouse Gas Protocol, which is a well-established standard for calculating the emission of greenhouse gases."

The bottom line, Frankelius said, is that agriculture may be a climate-neutral sector already or even climate positive, which contrasts with the common view based on the IPCC assumptions.

## Time to assess need for corn fungicide

By Kelsey Andersen  
Onofre, Extension Plant Pathology

We are entering the time window in Kansas where corn producers should be scouting fields and assessing the need for a foliar fungicide application.

Years of fungicide application research demonstrates that the single best time to apply a fungicide to corn for gray leaf spot control is from VT to R1. A single application at V7 - V8 will not hold up against late-season pressure. Those who choose to put a fungicide down with their last herbicide treatment will most likely have to apply a second cover at VT - R1 if there is any gray leaf spot pressure at all. A VT - R1 application may also provide some suppression of southern rust, should it arrive early enough to cause yield loss.

University fungicide trials also reveal that final disease severity plays a critical role in the magnitude and consistency of yield response to a foliar fungicide application. The tricky part is being able to predict before the VT to R1 stages what the disease pressure will be several weeks later. To make such a prediction, you need to consider "disease risk factors" and to scout for the disease.

Disease risk factors include:

- Susceptibility level of corn hybrid. Seed companies typically provide information on the susceptibility of their hybrids to gray leaf spot in their catalogs. In general, hybrids that are more susceptible to fungal foliar diseases will have a greater response to a foliar fungicide (if disease pressure is high enough).

- Previous crop. Because gray leaf spot survives in corn residue, the risk of disease increases when corn is planted back into a field that was corn the previous year.

- Weather. Rainy and/or humid weather generally is most favorable to gray leaf spot. In growing seasons when these conditions prevail, the risk

for disease development increases.

- Field history. Some field locations may have a history of high foliar disease severity. Fields in river bottoms or low areas or surrounded by trees may be more prone to having gray leaf spot.

Begin scouting for gray leaf spot in corn about two weeks before expected tassel emergence. Gray leaf spot is characterized by rectangular lesions that are one to two inches in length and cover the entire area between the leaf veins. Early lesions are small, necrotic spots with yellow halos that gradually expand to full-sized lesions. Lesions are usually tan in color but may turn gray during foggy or rainy conditions. The key diagnostic feature is that the lesions are usually very rectangular.

Current disease management guidelines suggest the following criteria for considering an application of foliar fungicide:

- For susceptible hybrids (those with the lowest rating within a company's lineup): Fungicide applications should be considered if disease symptoms are present on the third leaf below the ear or higher on 50 percent of the plants examined.

- For intermediate hybrids (those with an average rating within a company's lineup): Fungicide applications should be considered if disease symptoms are present on the third leaf below the ear or higher on 50 percent of the plants examined, if the field is in an area with a history of foliar disease problems, if the previous crop was corn, if there is 35 percent or more surface residue, and if the weather is warm and humid.

- For resistant hybrids (those with the best rating within a company's lineup): Fungicide applications generally are not recommended.

According to the data from Illinois corn fungicide trials, if at least five percent of the ear leaf area is affected by the disease at the end of the season, a foliar fungi-

cide applied between VT and R1 would likely have been beneficial. Using the disease risk factors and scouting observations collected just before tassel emergence will help you predict how severe disease may be several weeks after the VT to R1 stages, and help you decide whether to apply a foliar fungicide.

If no disease is present or pressure is low, I recommend holding off on the R1 application since efficacy will begin to wane in three to four weeks, just as late-season pressure may begin to develop. Data exists that would suggest that if the pressure begins to develop late, an R2 application can be economical and will provide protection later into the grain fill period. This later application could also protect against any late-season southern rust pressure.

Distinguishing between gray leaf spot and bacterial streak:

- Bacterial streak, identified as a new corn disease in the U.S. in 2016, is now active in most of western Kansas. We have received reports of bacterial leaf streak earlier than usual this year. While yield loss potential for this disease remains unknown, we do know that it can be misidentified as a gray leaf spot, resulting in unwarranted fungicide applications. Fungicides will not have any effect on a bacterial streak.

- Keep in mind that a gray leaf spot typically has very sharp edges defined by the leaf veins, whereas bacterial streak will have a wavy edge that can cross the leaf vein. Also, when backlit with light, gray leaf spot lesions will have an opaque appearance while bacterial streak lesions are more translucent.

If you are unsure about symptoms, please contact the K-State plant disease diagnostic clinic via email at [clinic@ksu.edu](mailto:clinic@ksu.edu).

If you have questions about your crops, contact River Valley District Crop Production agent at 785-243-8185 or by emailing [zrebecca@ksu.edu](mailto:zrebecca@ksu.edu).



# Home of the engine and oil changes for life!

Great selection of new and preowned vehicles.

You will receive the absolute best customer service.

Come to Clay Center KS where Glavan Ford is changing the way vehicles are being bought!

Shop us online @  
[GlavanFordofcc.com](http://GlavanFordofcc.com)

1-800-794-4010

811 Fifth St • Clay Center, KS

## AUCTION

SATURDAY, AUGUST 29, 2020 - 9:30 AM

11220 LK&W ROAD - LEONARDVILLE, KANSAS

Yamaha 250 Moto 4, 4-wheeler; 1979 Ford flatbed pick-up; Titan Challenger 16' bumper hitch stock trailer; 16' 2-wheel factory trailer; 1979 Chevy 4X4, ¾ ton; 300 gallon fiberglass water tank; power take-off generator; AC 5-bottom semi-mounted plow; 4-wheel running gear; single wheel flat bed fits GM.

John Deere LT66 riding lawn mower; JD 5HP roto-tiller; Elite Briggs & Stratton 8000-10,000 watt portable generator; New Holland sickle mower; JD rotary mower; rubber water tank; Coleman 5HP upright portable air compressor; wheelbarrow; tilt bed cart; miniature parade car.

2 9-drawer Craftsman tool chest with base cabinets; 2 5-drawer Craftsman tool chests; table saw; bench top drill press; bench grinders; scroll saw; mitre saw; Craftsman work bench; air bubble; extension cords; ladders; Workmate bench; paint shaker; floor jack; dolly; battery charger; post vise; pipe wrenches; saws; large wrenches; box & open end wrenches; sockets; hammers; circular saw; hedge trimmer; lanterns; chain saw; handyman & other jacks; sprayers; car ramps; measuring wheel; rotary bolt bin; shovels; garden tools; log chains; wire stretchers; lots shop tools & equipment; saddle; 2 pedal tractors one Murray; chicken crate & cages; T-posts; cream cans; tubs; 2 corn shellers; coal & other buckets; scythe; Toboggan sled; antique iron bed; child's sled; child's wagon; milk cans & crates; well pump; old buggy lights; Antique scale with 2-40" cast iron pillars; nail keg; wood toolbox; tractor weights; scrap iron.

**GUN LIST: (GUNS SELL FIRST AT 9:30AM)**

Remington 550-1, .22, S, L, LR; Iver Johnson Champion 20ga.; Pietro Beretta Silver Snipe 20ga.; Remington 1100, 20ga.; Remington 870 Wingmaster 28 ga.; Remington Target Master 510, .22 S, L, LR; Marlin 783, .22 WMR; Iver Johnson Champion, .410 Bore; W.H. Davenport Firearms, UNK, 12ga.; Reming-

ton 870 Wingmaster 20ga.; Remington 1100, 16ga.; Remington 1100 LW, 28ga.; Remington 870 Wingmaster, 16ga.; Ward's Western Field, 30-SB562A, 20ga.; Iver Johnson Champion, 16ga.; Marlin 336, 30-30WIN; Marlin Super Goose 10 Mod. 5510, 10ga.; Iver Johnson Trigger Ring model, 12ga.; Iver Johnson Champion, .410 Bore; Newmport WN, .410 Bore; H&R 88, .410 Bore; Ruger 10/22, .22LR; ClayCo Sports Limited 6, 12ga.; H.S.B. & Co., Ruso, model W, 16ga.; Sears & Roebuck 101.100, 20ga.; Remington 31, 16ga.; Stevens by Savage 87A, .22 S, L, LR; Remington Fieldmaster 572 Fieldmaster BDL 'DeLuxe', .22 S, L, LR; Glenfield by Marlin Arms 60, .22 LR; High Standard Mfg., DM-101 deringer, .22 WMR; Sturm, Ruger new Model single-six, .22 LR/22WMR; 2 Anniversary BB guns; BB pistol. All firearms sales will be processed through a Federal Firearms Licensed (FFL) gun dealer. All sales require the buyer to go through the NICS background check. All buyers (unless a FFL dealer) will be required to provide a state issued ID, to include State issued Driver's License, and/or State issued identification Card, and /or Kansas Concealed License (if issued), and Military ID if stationed in Kansas and reside in a different state. Long gun (shotguns and rifles) buyers must be 18 years of age. Hand gun buyers must be 21 years of age and must reside in Kansas. All FFL dealers will be required to provide a file copy of their FFL if they choose that option. Each buyer will be responsible for a \$25.00 transfer fee payable in cash to the on-site FFL gun dealer upon the approval and transfer of each firearm purchased.

Kenmore & Kitchen Aid refrigerator; Spectra glass top electric stove; 2 chest deep freezers; Maytag washer & dryer; small Sears apartment size refrigerator; Hearthstone wood stove; lift chair; lighted curio cabinet; sofa; large flat screen TV; gun cabinet; 2-door Oak cabinet; full size

bed; Kenmore sewing machine; rocker recliner; glider/swivel rocker & footstool; 2-door wardrobe; bookshelf; blonde chest; glass & brass cabinet; coffee table; 3-drawer chest; sewing rocker; Oak shelf; Oak school desk; metal utility cabinets; table & chairs; 4-drawer cabinet; 2 door glass cabinet; TV console; metal wardrobe; round end table; breakfast cart; wooden table; iron coat rack; fabric shelf; ½ round table; card table & chairs; Kindling box; 3 large Rubbermaid storage units; patio furniture; treadmill; metal shelving; floor & table lamps; wood stool; gas BBQ grill; fiber glass Robert Wood TV trays; paper shredder; heaters.

Collection of over 100 miniature pewter tractors & farm equipment; collectible knives; Ducks Unlimited items; Lindsborg Christmas Village; Willie Wildcat decanter; Neon Retail Liquor sign; heavy duty trike; complete set Franciscan 'Autumn' china; wooden bowl; advertising items; Black Bear figurines; Beanie Babies; brass bucket; glass bowls; Hallmark collectible Sports ornaments; Butterfly canister set & pitcher; costume jewelry; purses; gloves; miniature animal figurines; Holiday decorations; Fisher-Price Prancy Pony; Apple cookie jar; shot glasses; candleholders; Apple canisters; complete set of Apple pattern dishes; Hobart scales; Kitchen Klatter bottles; chicken, bird, dog, duck & cat figurines; Fostoria; bedding; blankets; quilts; Danbury mint Wildlife & Farmland plates; iron doll bed; old clocks; linen; books; radios; Corningware; kitchen utensils; baking pans; skillets; mixer; glasses; Corelle bowls; glass canister set; chalk fruit; wall plaques; pictures frames; vinyl records; Fisherman's Friend lozenges boat; collectible Budweiser beer mugs; cast iron pot; Winchester bullet advertising picture; Baseball cards (1980's); DVD's & player; board games; wooden boxes; grocery cart; water jugs; invalid stool; small yard art windmill; fans; rugs; rinse n vac.

COLLECTIBLES OF PAT ERICKSON & THE LATE JERRY ERICKSON

GANNON REAL ESTATE & AUCTIONS

VERN GANNON, AUCTIONEER

785-770-0066 • MANHATTAN, KANSAS • 785-539-2316

[www.gannonauctions.com](http://www.gannonauctions.com)





# GRASS & GRAIN DIRECTORY

## AUCTIONEERS

**WE GET IT SOLD!**

Foundation Realty's Morgan Riat  
**AUCTIONS**



Member of the Kansas Auctioneers Association

**MORGAN RIAT**  
REALTOR/AUCTIONEER  
785-458-9259  
MORGAN@FOUNDATIONKS.COM

**FOUNDATION REALTY**  
785.473.7230  
WWW.FOUNDATIONKS.COM

**KULL'S ARMS**  
Old Town Station invites consignments for our Spring, Summer & Fall Auctions. If you have 1 or 1,000, we'd like to talk to you. We will also buy collections or individual guns.

Dan@ArmsBid.com or  
785-862-8800 • 800-466-5516  
Topeka, Kansas

**YOUR REAL ESTATE AUCTION TEAM!**

**Crossroads Real Estate & Auction LLC**

TERRI HOLLENBECK, Broker  
ANDREW SYLVESTER, Auctioneer  
BILL DISBERGER, Coordinator  
JESSICA HOLLENBECK, Office Mgr.  
www.kscrossroads.com  
785.539.2732

**GAVEL ROADS ONLINE AUCTIONS**

**GAVEL ROADS IS THE PLACE TO GO TO BUY AND SELL EQUIPMENT.**

785.587.7737  
www.gavelroads.com  
READY ... SET ... SOLD!

Custom Manure Hauling & Spreading  
Big to Small Jobs!  
**Chore-Boyz Services**  
913-636-1099

Blue Valley Drilling, Inc.  
Water Well Drilling & Service  
Family Business Over 70 Years!  
CONTACT ERIC STRADER  
785-363-7353

**HOOVER TARP SALES**

Abilene, KS  
Toll Free 1-800-536-2348  
"DON'T GO TARPLESS"  
www.hoovertarpsales.com  
GENUINE SHUR-LOK NOTHING LESS!  
FAX 785-598-2282

**GENE FRANCIS & ASSOCIATES**  
REAL ESTATE BROKERS & AUCTIONEERS

Serving all 105 Kansas counties with more than 30 years of experience.

Offices located in Wichita, Manhattan & Anthony.  
Call us today at 316.524.8345

www.genefrancis.com  
A bid above the rest!



**GANNON REAL ESTATE & AUCTIONS**  
VERN GANNON, CAI Broker/Auctioneer  
Manhattan, Kansas 66502  
785-539-2316  
785-537-9003  
www.gannonauctions.com  
The Experienced Sound In Selling

**STEVE MURRAY**  
Broker/Auctioneer  
MURRAY AUCTION & REALTY  
Real Estate - Farm - Household  
785-556-4354  
murrayrealtyandauction@yahoo.com  
www.murrayauctionandrealty.com

**purple wave auction**

**BUY & SELL**  
Ag Equipment  
Const. Equipment & Vehicles  
1.866.608.9283  
purplewave.com

**D. ROCHE FENCING INC.**

QUALITY BUILT FENCES  
DON ROCHE  
785-292-4271  
FRANKFORT, KS

**HALDEMAN WELL DRILLING & PUMP SERVICE**

WELL DRILLING COMPLETE PUMP SERVICE SOLAR PUMPS  
MANHATTAN, KS  
Day or Night  
785-539-9295

YOUR AD COULD BE HERE! GRASS & GRAIN  
785-539-7558

## REAL ESTATE

10.1 ACRES 2-1/2 MILES north of Wamego on Highway 99. 801-916-6161, Rick.

Hard-working individual looking to rent farm ground!  
Crop share, cash rent, custom farming.  
Let's discuss your options!  
Contact Dave:  
402-641-0503

**For Sale**  
Pott Co. NE 1/4 17-6-9, From Blaine: 2 1/2 N and 1 W, 71 ac crop w/ potential of more, remainder native grass.  
**Joe Horigan Realty & Auction Co.**  
785-250-5148  
www.jhorigan.com  
jhorg@bluevalley.net

Looking for that special place in the country - to buy or sell?

Call  
**Dolly Anderson, Broker**  
G&A Real Estate, INC.  
785-532-8801  
Manhattan, Kansas  
dollyanderson.com

## FARM & RANCH

**Land For Sale**  
**Saline Co.-** 159.28 acres m/l with 151.66 acres crop land located North of Lindsborg. Call Chris 493-2476.  
**Ottawa Co.-** 10 Acre Building Site & 20 Acre Building Site Northwest of Bennington on blacktop. Call Chris 493-2476  
**Ottawa Co.-** 79 AC m/l. 67.62 AC Crop Land & the balance in timber & creek. Excellent habitat for deer & turkeys. Call Chris 493-2476.  
**Ottawa Co.-** 160 AC m/l with 149 AC cropland & 11 AC waterways and wildlife habitat. Call Chris 493-2476.  
**Ottawa Co.-** 78 Acres m/l, 42.4 Acres CRP balance native grass. Excellent upland game bird habitat. Chris 493-2476

Farm & Ranch Division Of:  
**COLDWELL BANKER**  
Antrim-Piper Wenger Realtors®  
631 E Crawford Salina KS  
www.cbsalina.com  
1-800-276-3641

**HORIZON FARM & RANCH REALTY, LLC**  
1-888-825-1199  
www.horizonfarmranch.com

**AG LAND**

NEW LISTING! 150 Ac +/- Tillable farm just N. of Abilene. Call Ray!  
\* 80 Ac +/- Tillable farm just N. of Abilene. - **UNDER CONTRACT!**  
\* 120 Ac +/- on Smoky Hill River NE of Lindsborg. Part irrigated.  
\* 240 Ac +/- Tillable/Pasture at Junction City. Seller is Licensed Real Estate Agent. Call Ray!  
\* 160 Ac +/- Pasture NW of Lindsborg. Rural water and power in place.  
\* 150 Ac +/- Pasture S. of Southeast Saline. - **UNDER CONTRACT!**  
\* 80 Ac +/- Tillable at Westfall.  
\* 160 Ac +/- Tillable at Westfall.  
\* 80 Ac +/- Prime hunting w/Tillable/CRP/Timber @ Chapman. - **SOLD!**  
\* 160 Ac +/- Tillable farm @ Niles - **SOLD!**  
\* 155 Ac +/- Tillable farm @ Niles - **SOLD!**

**MORE LISTINGS ON OUR WEBSITE!**  
\*Auctions \*Private Treaty Sales \*Value Assessments

Ray Swearingen Broker/Owner.....785.452.8498  
Lucas Hamm .....785.366.3580 Rachelle Swearingen .....785.452.5115  
Ty Bryant .....785.366.0261 Billy Randle .....785.479.1152  
Brad Budden .....785.280.0915 Sheila VanWinkle Corn.....785.280.3564

## REAL ESTATE

**Don't Get Sideways With Your Advertising Dollars!**

**Remember GRASS & GRAIN for All Your Advertising Needs**

## TRAILERS

**CIRCLE D**  
LIVESTOCK & HORSE TRAILERS  
FLATBED TRAILERS  
• 1-800-526-0939 •  
www.circle-dtrailers.com

**VISSER TRAILER SALES**  
New 25' flatbed, sell at cost  
Use 31' flatbed  
Used 3 horse slant trailer  
New 2 mower utility trailer  
Call 785-258-2800

**Trailers 4 U**  
785-292-4166  
Frankfort, KS  
**MERRITT TRAVALONG**  
www.trailers4u.com

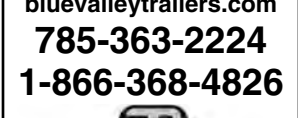
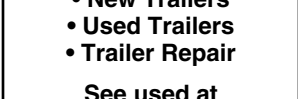
**DONAHUE**  
When There's Work To Do...



**DONAHUE!**  
1-800-457-7406  
www.donahuetrailers.com

**Elite Aluminum Stock Trailers**  
Titan — Sharp  
Your Trailer Super Store!  
Mid-Plains Equipment  
E. Hwy 30 & 10, POBox 2526  
Kearney, NE 68848  
Delivery Available  
308-237-5810  
www.midplainsonline.com

**Blue Valley Trailers**  
Waterville, Kansas



Hayliner - Bale Buzzer

- New Trailers
- Used Trailers
- Trailer Repair

See used at  
bluevalleytrailers.com  
785-363-2224  
1-866-368-4826

**HUSTLER**

**BOB'S TRAILER SALES**  
Pomona, Kansas  
785-418-2227  
www.bobstrailersales.com

**B&W Hitches**  
Turnover ball: \$595  
Free Installation!

- 2020 Utility 18+2, two 7k axles .....\$3,975
- 2021 Travalum 24' stock trailer .....\$15,800
- 2020 Circle D stock trailer, 20' .....\$8,500
- 2020 Circle D 24', Full cleated floor, bull pkg, loaded .....\$11,250
- 2020 Circle D 24' stock .....\$9,500
- 2020 Elite 30' 10k axles gooseneck flatbed... \$8,700
- 2020 Elite 25', 2-7k axles Gooseneck flatbed .....\$6,450
- 2020 Elite 25' 10k axles Gooseneck flatbed .....\$8,150
- 2020 Elite 32' 10k axles Gooseneck flatbed .....\$8,900

All Elite flatbed trailers low profile and torque tube, dual jacks and toolbox.

## MACHINERY

**SALVAGE COMBINES**  
ALLIS N7-6, L2, L, M, G, F2, F, CII, AII; JD 8820, 7720, 7700, 6600, 4400, 3300, 105, 95, 55; MF 860, 760, 750, 510, 410; IH 1680, 1480, 1460, 915, 815, 715, 503, 403; NH TR70-85, 1400, 995, 985, 975.

**SALVAGE TRACTORS**  
ALLIS 7000-7080, 220, 210, 190XT; D17-19; JD 84-8630, 7520, 6030, 5020, 4630, 4430, 4020, 3020, 720, 730; CASE 1470, 1370, 1270, 1200, 1070, 930, 400; IH 1568, 1466, 1256, 1066, 1026, 806; FORD 4-5-6-8-9000; MF 2745, 1155, 1100, 90, 85; OLIVER 2150; MM G1000; WH2-150, 4-150.

**Mike's Equipment**  
BUHLER, KANSAS  
1-800-543-2535

## MACHINERY

Guaranteed Used Truck Tires, most sizes.  
GeeTire.com  
Rossville, KS.  
785-231-8397

**6 & 8 row John Deere Corn Heads For Rent**  
Adapters available, reasonable prices.  
**Jack or Gary**  
785-564-0511  
785-294-2236

**20- Gleaner heads**  
Corn, Flex.  
Majority reconditioned. Also, custom harvesting wanted.  
Corn, Milo, Soybeans.

**Duffek Implement & Harvesting**  
Seward, NE  
402-641-0503

**Tire Town Inc.**  
20 8x38 New .....\$825  
340/85 R28 New .....\$485  
520 70R30 Buffed .....\$700  
480 70R28 Buffed .....\$500  
420 85R34 Used 70% .....\$300  
520/85R42 80% .....\$800  
7 184x38 10P New .....\$525  
600/65 R28 New .....\$1,000  
9 360/70R28 Buffed .....\$325  
710/75 R42 Buffed .....\$1,600  
23 R30 overstock .....\$1,100  
184x34 New .....\$480  
800/70 R38 Buffed .....\$2,600  
380/90 R46 80.00 .....\$750  
800-444-7209 800-451-9864  
913-441-4500 913-682-3201

**Gleaner Combines**  
'95 R62 Cummins\$19,500  
'81 L2 .....\$9,500  
'81 M2 RWA .....\$8,500  
(2) 825 flex heads..\$9,500  
LM 315 flex head ..\$3,950

EZ Trail Gravity Wagons, Grain Carts, and Header Trailers.

Great Plains Tillage Tools

**81 Farm Eq. Service**  
McPherson, KS 620-241-3100  
1-800-357-3101  
www.81farm.com



**NEW**

- ZR5 self propelled
- 604-605N net
- R2300 & R2800 rakes
- TM800 Trail Mower
- VR-8, 10, 12 wheel rake

**USED EQUIPMENT**

- 604N
- TM800 Trail mower
- MC1030 MOCO
- MC840
- 605M net ramp floats

**FEED MIXERS**

- FA-430 Feed wagon

To view all of our New & Used Equipment, please check out our website: www.sloophook.com or give us a call: 785-828-4706

**Sloop Sales & Hook's Repair Inc.**  
Lyndon, KS 66451

**CLAAS USED FORAGE HARVESTERS & HEADS**

- (4) '17 CLAAS 980 ..... FR. \$325,000
- (3) '15 CLAAS 980 ..... FR. \$250,000
- (3) '14 CLAAS 970 ..... FR. \$160,000
- (3) '13 CLAAS 980 ..... FR. \$175,000
- '09 CLAAS 980 .....\$70,000
- Orbis 750 Heads ..... FR. \$20,000
- PU380 Heads .....FR. \$10,000

**TRACTORS**

- '12 John Deere 6170R .....\$85,000
- '98 Case 8930 .....\$40,000

**COMBINES**

- (3) '20 Gleaner S97 .....NEW
- '11 Gleaner S77 ..... No Trade Special
- '09 Gleaner R66.....\$95,000
- '97 Gleaner R62.....\$25,000
- (2) '97 Gleaner R72 ..... FR. \$20,000
- '96 Gleaner R72.....\$25,000
- '19 Gleaner 3312.....NEW
- (2) '13 Gleaner 3000 \$25,000
- '10 Gleaner 7200 30'...\$7,500
- (2) Gleaner 24' 30' .....\$4,500
- (2) Gleaner 40' 30' .....\$2,500

**MISCELLANEOUS**

- '14 Baker 1000.....\$7,500
- '14 New Holland H8040 .....\$65,000
- '13 Great Plains 3610 .....\$55,000
- '13 John Deere 690 ..\$60,000
- '13 John Deere 692 ..\$55,000
- '11 White 8772 .....\$25,000
- '01 Donahue Trailer ....\$6,500



**Kalvesta Impl. Company, Inc.**  
620-855-3567  
KALVESTA, KS 67856  
www.kickalvesta.com

# GRASS & GRAIN CLASSIFIEDS



FOR ALL YOUR ADVERTISING NEEDS  
**785-539-7558**

**MACHINERY**

**FOR SALE: 213 JD FLEX** head. 9115 Massey flex head. Jack Boyle, 785-564-0511, 785-294-2236

**FOR SALE: PARTING OUT** Case-IH 2188. 38" duals w/ex-tensions. Also some other parts. 785-294-2257.

**JD TWIN RAKES/CART; JD** 10' chisel plow, 3" twisted points and sweeps. 620-947-3258, Hillsboro.

**NEW USED**  
Rakes: VR1428  
Balers: 6- 605SM, 5- 605N, 2- 605SM corn stalk, 1- 504N, 4- 605M, 1- 604M, 1- 504SI, 1- 6650 Rancher, 1- 6650 Rancher. Rakes: 1- R2800, 2- R2300, 1- VR1224  
**LARGER BALE FORKS SPRING STEEL AVAL. METAL ROUND SQUARE TUBING ANGLE CHANNEL & FLAT**  
2 3/8", 2 7/8", 4 1/2" pipe  
**WELDING SUPPLIES**  
Oxygen C125 & acet. Bottles for sale  
Welding rods & wire  
Top & bottom belts for all balers  
Twine 4' & 5' netwrap  
Portable panels, Feed Bunks & Round Bale Feeders  
**Vermeer Sales & Leasing**  
LEONARDVILLE, KS 66449  
785-293-5583  
785-293-2542

• 20 Travelong 7.5x36" Stock Trailer, (3) 8k Axles  
• 14 Gehl RT175 Track Skid Steer, 900 hrs, cab w/heat  
• 07 Case 465, 2600 hrs, Clean, Open Cab  
• 06 Lull 1044C-54 Telehandler, Clean  
• 16 Cat 272D, C/H/A, Warranty, 2600 hrs  
• 13 Deere 329E, C/H/A, 2400 hrs, Warranty  
• 17 New Holland C232, Track, C/H/A, 1800 hrs  
• 15 Deere 310SL Backhoe, Extendahoe, 2100 hrs  
• New Renn 1020C Grain Bagger.....\$25,900  
• New Renn RMC30 PTO Roller Mill.....\$29,500

**MACHINERY**

**WANTED: SILAGE** conveyor w/ left-hand discharge to fill silos. 785-364-7707.

**N.H. 499 HYDROSWING** swather. 12' cut, great shape. \$5500 cash. 785-231-4461.

**JD CONTOUR MASTER** feeder house front. Convert your level land JD 60 or 70 series feeder house to Contour Master. \$2500. 785-466-6019.

**JD 946 DISC MOWER, 12'; JD** 567 baler w/net wrap; 8500 Schaben pull type field sprayer, 1200 gallon, 90' booms. All equipment extra good condition. 785-364-7707.

**PLANTER SALVAGE**  
IH 800-900-950-955 Cyclo  
JD 494-1280, 7000-7300,  
plate and plateless  
White 5100  
**Koelzer Repair**  
Onaga, KS 785-857-3257

**SALVAGING COMBINES**  
N5, N7, L, LZ, M, F, G, C, CII, AII, A&E, K Gleaner. 6620, 7720, 8820, 7700, 6600, 4400, 3300, 105, 95, 55, JD. 915, 1480, 1460, 1420, 815 IHC. 860, 760, 750, 510, 410, 300 Massey. Several black & orange Gleaner corn heads.

**Jack Boyle**  
Vermillion  
785-382-6848 785-564-0511

• 40+ Late Model Skid Steer loaders...In Stock  
• New H&S 5114 & 7116 High Capacity Rakes  
.....In Stock



**MACHINERY**

**2 JD 893s, GOOD ROLLS.** Hydraulic deck plates and chains. \$13,500 choice. Would consider trade for 6-row. 785-466-6019.

**2 JD 630 HYDROFLEXES-** single point. Both one owner, very nice. Heads 2011 and 2012. \$13,500 choice. 785-466-6019.

**JD 455 BIFOLD DRILL,** fertilizer. Rebuilt, new blades and bearings 1 year ago. Shedded, excellent. \$19,900. 785-479-0990.

**JD 925 FLEX HEAD,** new JD wobble box, kept in shed, good condition, \$5600. Four 20.8.42 Firestone tractor tires, some sidewall cracks, \$100 choice. 785 658 5964



**New Equipment**  
604R Premium Baler  
604N Baler  
605N Baler  
504R Signature Baler  
R2300 Twin Rake  
VR1224 12 Wheel Rake  
4' & 5' Net Wrap & Twine  
**Used Equipment**  
6640 Rancher Baler  
605 Super M Baler  
**New in 2020**  
**Custom Inline Bale Wrapping**

**Wertzberger Ranch Equipment LLC**  
Alma, KS  
785-765-3588

**MACHINERY**

**20' KRAUSE V-BLADE** w/fold cylinders, NH3 anhydrous valve, nice hitch, good blades and coulters. \$2000. 785-658-5506.

New BEFCO rotary rakes .....  
'98 Chevy HB200 HydraBed .....**Coming In**  
Several used zero turn mowers .....**In Stock**  
John Deere 318 w/ mower, front blade & rear sprayer ...  
.....**\$2,195**  
Case IH 8920 MFD new rubber, sharp .....**Call**



**- USED IMPLEMENTS -**  
2012 2856A Round Baler  
3986 Hesston 16 wheel rake  
MF 2680L tractor with loader  
2013 Gehl V270 skid loader  
2008 R75 Gleaner  
2015 S78 Gleaner  
2010 Gleaner 8200 25' w/air reel  
2005 Gleaner R65  
2010 MF 2856A round baler  
2016 R190 Gehl skid loader  
2014 Gleaner S77 combine  
1998 Gleaner R72  
Gleaner 800 30' flexhead  
Gleaner 400 30' rigid  
Gleaner 8000 25' flex head  
**Call us for your AGCO part needs!**



**Kuhlman Impl.**  
LINN, KANSAS  
785-348-5547

**MACHINERY**

**Case & IH Tractor Salvage**  
Case 300's thru 2096  
IH 460's thru 5488  
Over 1000 Tractors on shelf  
New & Rebuilt parts for all brands of tractors/ combines

Want to buy  
Case & IH salvage tractors

**Elmer's Repair CENTRALIA, KS**  
785-857-3248  
[www.elmersrepair.com](http://www.elmersrepair.com)

**NEW TRACTORS**  
Kubota M7-152 PS, MFD, ldr.  
Kubota M6-111 MFD w/ ldr.  
Kubota M5-111 MFD w/ ldr.  
**USED TRACTORS**  
'06 Kubota M7040 HDC 4WD cab ldr  
'08 Kubota L3400 HST, ldr.  
'18 Kubota MX5800 HST, ldr.  
**MISCELLANEOUS**  
'11 NH H7450 13' DMC  
'94 JD 535 baler w/ net wrap  
Bush Hog SQ84T 3pt mower  
'87 Bush Hog 2615 flex wing mower



**McConnell Machinery**  
1111 E. 23rd Lawrence, KS  
785-843-2676  
Evenings  
785-979-2271  
[www.mcconnellmachineryco.com](http://www.mcconnellmachineryco.com)

**BERG REPAIR**  
14200 Godlove Rd.  
Westmoreland, KS  
785.457.3534



**Net wrap & twine available.**  
**NEW EQUIPMENT**  
• VR1022-1224 wheel rakes  
• BPX 9010 Processor  
• Winkel Calving Pen  
• Portable Corral  
• R2300 rake  
• BPX 9000 Bale Processor  
• MC 3700  
• Perfect Tree Saw  
**USED EQUIPMENT**  
• R2800 Rake  
• 5500 Rebel Baler  
• 665 with net  
• 605N  
• RC 9120 mower  
• TM850 Mower Demo

**USED TRACTORS**  
'15 Case IH Maxxum 125 MFD ldr, 1,010 hrs  
'02 Case IH MX200 3,140 hrs  
'09 Case IH Magnum 215, 3,535 hrs  
'99 JD 4300 MFD cab, 792 hrs  
'96 JD 8300 MFD 7,995 hrs  
'95 JD 8770, 4WD, 3,903 hrs  
'89 Case IH 7140 MFD  
'79 JD 4240 QR  
'74 IH 1066 w/ cab  
**MISCELLANEOUS**  
'20 12820 Bush Hog batwing, 20'  
Case IH 900 8R30 front fold  
Case IH 900 planter 6R30  
'97 Case IH 2166 2,700 engine hrs, 1,975 separator  
'98 Case IH 1020 15' flex  
'04 Case IH 2366 4WD 4,045 eng., 2,995 sep.  
'11 Case IH 7088 combine 1705 engine, 1,248 sep.  
'11 Case IH 3406 corn head w/ trailer  
'10 Case IH 2020 flexhead 30' w/ air reel  
'05 Case IH 1020 20'  
'89 Case IH 1020 25'  
'89 Case IH 1063 corn head  
'06 Killbros 1170 graincart w/ tarp  
'09 J&M 875-18 grain cart w/ tarp  
'13 EZ-Trail 510 grain cart w/ tarp  
(2) Parker 2600 gravity wagons

JD 1418 rotary cutter, 14' Hesston BP25 bale processor  
Sitrex MK16 wheel rake  
'08 Case IH RB564 rd. baler  
(2) CIH 6500 Conser-til, 14' JD 980 FC 27'  
Case IH 490 disc 25'  
'01 Case IH 3950 disk, 33' JD 915 V ripper 7 shank  
JD 714 disc chisel 9 shank  
JD FBB drill 16x8  
GB 900 Hi-master ldr  
Smeeco 3pt post hole digger  
BMB Estate 72 finish mower  
Land Pride HRL-3578 retractable shank box blade 6.5'  
'14 Cub Cadet LZ60 zero turn 145 hrs

**NEW EQUIPMENT**  
Farmall 35C MFD loader  
Farmall 95A MFD cab  
Farmall 115A MFD Cab  
Magnum 280, 195 hrs  
Case IH 335 Turbo 28'  
CaselH DC133 disc mower conditioner  
Several Bush Hog rotary mowers and tillers  
Complete line Bush Hog zero turn mowers



**ROSSVILLE Truck & Tractor**  
ROSSVILLE, KANSAS  
785-584-6195

**EMPLOYMENT**

**HELP WANTED: Warehouse Position**  
APPLY IN PERSON AT:  
Key Feeds 105 4th St.,  
Clay Center, KS.  
*Must be able to pass drug test.*

**KEY FEEDS**  
Clay Center, Kansas is accepting applications for CDL drivers. **Qualifications:** Current CDL; Current medical card; Good driving record; Able to lift 50 lbs. Drivers will be home nightly. No over night stays. Competitive pay and benefits. Retirement & health insurance. Pre-employment drug screen required.

Applications can be picked up at Key Feeds, 105 4th St. Clay Center, KS 67432.  
**For questions call Rod at 785-632-2141**

**Fourth & Pomeroy Maintenance and repair position:**

Position is responsible for regular greasing for bearings, repairs and maintenance of belts, motors, pellet machine, grain elevator legs and air compressor. Repair experience required with pay based on experience. Company provides paid employee health coverage, retirement program, paid holidays and paid vacation after one year.

Contact Rod, 785-632-2141.

**BUILDINGS / BLDG MTL.**

**SMITH POSTYARD**  
Hedge Post  
Delivery Available  
**JEFF SMITH**  
620-496-8956

**Metal Panels & Accessories**

**THE VALUE LEADER. WE WON'T BE UNDERSOLD CALL FOR CURRENT METAL PRICING**  
• DELIVERY AVAILABLE •  
**WESTERN METAL**  
Best Service  
Louisburg, Kansas  
**1-800-489-4100**

**DIAMOND L SUPPLY**  
Dwight, KS  
• 1.888.608.7913 •

29 ga 40yr ptd..... \$69.89/sq  
26 ga 40yr ptd..... \$86.36/sq  
29 ga Galvalume... \$55.68/sq  
**\*Metal Roofing & Siding\***  
**Complete Bldg. Packages**  
Doors, Insulation, Livestock Equipment, Scales, Waters, Bale Beds & Cake Feeders  
**\*Jobsite Delivery Available\***  
(prices subject to change)  
[www.diamondsupply.com](http://www.diamondsupply.com)

**PETS**

**GREAT PYRENEES** puppies born 6/10/2020. Farm raised with sheep. 816-863-2965.

**WANTED**

**WANT TO BUY SALVAGE** and non-running ATV's, snow-mobiles, jet skis, and dirt bikes. Any condition, cash paid, will pick up. 402-469-2002.

**MISCELLANEOUS**

**ONLINE FARM/ESTATE** auction closes Aug. 26th @ 7pm. 325 lots @ [www.hibid.com/catalog/226727](http://www.hibid.com/catalog/226727) - Antiques to Tractors.

**CONSOLIDATION YARD** farm sale. About 1000 miscellaneous items. Farm and antique. Amish buggy, excellent shape. 30-year collection. Must be sold as-is. Continuous sale from 9 to 9 until Nov. 30th. 785-293-2566. 11551 Union Rd., Leonardville, KS 66449.



**Grass & Grain wants YOU**  
To get the best advertising for your buck!  
Call today & ask about our low rates!  
877-537-3816

**Firestone DON'S TIRE & SUPPLY**

IF 800/70R38 FST RAD DT..... **\$3,442**  
480/80R 42 FST RAD DT..... **\$1,519**  
VF 380/90R 46 FST RAD RC..... **\$1,933**  
460/85R38 Performer EVO ..... **\$934**  
*Prices and Product availability are subject to change without notice.*  
**TOLL FREE 866-888-7838**  
**www.donstire.net**  
**ABILENE, KS**

**— ITEMS FOR SALE —**

2004 JD 8420 Tractor 4,137 hrs.....\$90,000  
2006 MF 6495 tractor 3,300 hrs.....\$69,000  
2017 CIH 310 Magnum tractor 5102 hrs.....\$85,000  
JD 4240 tractor.....\$14,500  
2016 JD 6145 M tractor 2,078 hrs.....\$71,000  
'95 White 6124 tractor.....CALL  
IH 986 tractor.....\$8,500  
Minneapolis Moline G955 tractor mechanic special.....\$6,000  
2011 Case SV300 skid steer... ..CALL  
Several JD 612 cornheads .....CALL  
Several JD 608C cornheads ... ..CALL  
Several JD 893 cornheads .....CALL  
2010 NH 98D Cornhead.....\$13,000  
2011 Drago 8R30 Cornhead... ..\$23,000  
JD 444 cornhead .....CALL  
JD 893 cornhead .....\$13,000  
Several CIH 2412 cornheads .. ..CALL  
CIH 2208 cornhead.....\$13,500  
Several CIH 3408 Cornheads . . .CALL  
CIH 3208 corn head - bushes nice.....\$15,500  
(2) Geringhoff cornheads 8rw/12rw .....COMING IN  
Gleaner 3000 cornhead 12rw... ..CALL  
Agco Cray 8000 Air-flex 25' .....\$9,000  
JD 853A rowhead .....CALL  
2014 CIH 3152 rigid draper head 30' .....\$22,000  
Several CIH 1020 flex heads... ..CALL  
JD 930 flex head..COMING IN  
Several 630 flexheads .....CALL  
1990 JD 912 pickup head.....\$5,250  
E-Z trail 475 grain cart ..\$4,500  
Kuhn 5156 mixer.....\$18,000  
Patz V420 LP vert. mixer .....\$14,000  
Roto Mix VXT 535.....\$13,000  
JD 716A silage wagon..\$7,000  
2013 Case WD2303 Moco Swather rotary head 16' 1400 hrs.....\$70,000

H&S HDX14 hayrake..\$11,000  
Rowe WR14 hayrake..\$14,500  
2016 New Holland 560 baler roll belt .....\$22,000  
New Holland 855 round baler .....\$700  
2013 Farm King rake 18 wheel .....\$9,500  
New Idea 353 manure spreader.....\$7,000  
New Holland 195 manure spreader.....CALL  
2013 Bestway Field Pro IV Sprayer .....CALL  
JD 400 rotary hoe 15' .....\$900  
JD 4600 plow .....\$5,000  
Blu Jet 7 sh pull type spring trip shanks nice.....\$14,000  
Blu Jet II ripper 7sh.....\$6,500  
Blu Jet Ripper 5sh.....\$4,000  
VPS Ripper 7 shank .....\$5,000  
Besler 770 ripper 9 shnk \$6,500  
**22 ROW CULTIVATORS 6-8-12 RW .....IN STOCK**  
**11 PLANTERS / SEVERAL DRILLS.....IN STOCK**  
2008 White 8800 planter 16R30 .....\$50,000  
JD 7300 planter 8R36-38-40 ... ..\$6,000  
JD 1700 planter 6R36-38-40 ... ..CALL  
2003 White 8100 planter 8x30 .....\$13,500  
Kinze planter 8R36 .....\$4,500  
KMC Cultivator 4 row.....\$750  
Industrias 836R header trailer 36' .....CALL



**Complete listing on our web: www.jonesmachineryinc.com**  
**BUY/SELL/TRADE DAILY**  
Smith Center, KS  
**785-282-3000**  
785-282-0432 Cell  
785-686-4005  
Evening Calls Welcome



**Tumbleweed Auction Co. LLC** is taking consignments at anytime & has joined up with Jones Machinery, Inc., with 50 years knowledge in used farm equipment. Online auctions provided by AUCTIONTIME.com with absolute & reserve option available.  
**Call or stop by today!**

**SHUCK IMPLEMENT**  
IN STOCK - NEW MASSEY FERGUSON HESSTON 2900 SERIES

2006 CAT 252B skid steer ldr, 2,222 hrs, enclosed cab, heat & air cond., Grouser steel tracks over tires, without bucket. Stk#8270 .....\$22,500  
2018 ASV RT75, 600 hrs, enclosed all weather cab, heat, air cond., premium hyd. PKG, Hyd QA, bucket positioning & ride control, factory B.U. cam radio, bucket. Stk#6397 .....\$58,900  
2018 Dodge Ram 2500 pick up bed, single axle, black, nearly new.....\$2,200  
2014 MF 2946 1,600 bales, auto mesh & twine, C1000 monitor, 21.5L-16.1 tires with suspension axle, bale ramp, fire extinguisher. Stk#5950.....\$27,900  
2013 MF WR9770/9195, 1,355 eng. hrs, wide susp., cab w/ high speed transport, very clean well maintained shedded machine, system 150 auto guide MF 9195 rotary disc razor bar head, 16' wide.. Stk#7440/8094 .....\$87,500  
JCB 1987 6' wide model #500 series, Ser#547 36600 0.9M(3) .. ..\$2,500  
2013 White 8222 No-Till planter, 12 row 30" flex frame fold, liquid fert., 3 BU hoppers, SM400SE monitor, Pneumatic down pressure, point row shut-off 6 rows. Stk#1100 .....\$38,900  
1976 JD 336 small square baler, twine tie, clean, sitting in shed since 2004. Selling for an Estate. Stk#7976 consigned .....\$4,400  
2014 MF 5611 w/ MF 941 ldr. 415 hrs, like new, very nice clean tractor. Air seat, 540/540E/1000 PTO, AM/FM/ WB digital stereo. 84" material bucket w/ Euro Quick Attach bale spear - Euro Attach MF/ Quicke 72556073M Stk#3094. Stk#2505/2506 .....\$64,900

**SUPERIOR IMPLEMENT, INC.**  
402-879-4723  
Evening: 402-879-3719  
SUPERIOR, NEBRASKA

2019 Sunflower 6631-29 VT tool. 14" Hydraulic rolling basket finisher. Stk#6926 .....  
.....New - In Stock  
2019 Grouser AG 240i Dozer Blade. 4-way blade w/ Box End Plate Kit. Incl. FH-400 NH/Buhler Versatile Genesis Mount. Only used partial season, pushed around 3,500 tons. Stk#7612 .....\$24,900  
2015 MF 1734E, approx. 200 hrs.,4WD, 9x3 trans., w/ Grill Guard, eng. block heater, R1 Ag Tires Front 7-16 / Rear 11.2x24. Stk#3588 .....\$12,900  
Woods PHD65 post hole digger w/o bits. Includes 9" HD double flight auger (\$200 individually). Stk#7447 .....\$900  
2002 Hesston 845 round baler, twine tie, wide pickup, Hyd. kicker, stk#7443. **Promotional Financing** .....\$6,900  
2008 MF ZT29 Zero Turn, very clean, 60" Hyd. lift deck, 425 eng. hrs., 3 cyl. diesel, bull in deck lift jack for changing blades. Stk#1635 consigned... ..**Reduced** \$5,900  
2008 Gravely 152Z Zero turn lawnmower Kohler 23Hp, 52" deck kept inside 425 hrs, stk#5767 .....\$4,400  
NH 616 rotary disc mower, very clean, kept serviced, 7'-8" swath. Stk#5301 consigned... ..\$5,900  
2011 MF 8200-25 flex head, new SCH sickle, guards good, kept shedded. Stk#1943 Set up for Gleaner, can fit MF.....**REDUCED** \$18,900

**Lawrence, KS**  
**785-843-8093**  
**800-654-5191**  
**Fax: 785-843-1014**



# Registration now open for Feeding Quality Forum webinar

**By Maeley Herring**  
On-target information powers the economy, especially the cattle sector in the challenging world of 2020.

Every year since 2006, cattle feeders, ranchers, educators and allied industry leaders have gathered at the Feeding Quality Forum (FQF) for thought-provoking conversation and networking.

This year offers the same range of topics and interaction – but in a virtual setting.

“You won’t get to shake hands with old friends and new, but we’re still bringing together some of the great minds in the beef industry to present the kind of information folks have come to expect from the Forum,” says Kara Lee, production brand manager for the Certified Angus Beef® (CAB®) brand.

The 15th annual conference as webinar is being condensed to a few hours on Aug. 25 and 26 that will offer key marketing insights and unique perspectives on the beef supply chain’s future.

Many feedyard managers and staff have attended over the years, but Lee says FQF is a great resource for everyone in beef cattle production and marketing.

“Along with cattle feeders, we are targeting commercial cow-calf producers who are retaining ownership, interested in some progressive marketing of their own, or just learning how to raise better beef,” she says. “It’s also a great opportunity for folks in allied industries – anyone who touches the cattle feeding business.”

Dan Basse, president

and analyst for AgResource Company, will kick-start the webinar Tuesday afternoon with an overview of commodity and financial markets around the world. Back by popular demand, “He brings some perspective on how what’s going on globally can impact our business here on the cattle production side,” Lee says.

Dustin Aherin will follow with “Hindsight 2020.” The RaboResearch vice president and animal protein analyst will show how COVID-19 first affected the cattle industry and what’s next for cattle procurement, processing and merchandising, post-pandemic.

“We know after-effects of the market disruption will be top of mind for cattle feeders for months to come,” Lee says. “We

want to bring in someone who can provide some really excellent perspective on that moment in time and what we can expect looking forward.”

Later that afternoon, FQF will recognize noted cattle feeding research scientist John Matsushima as the 2020 Industry Achievement Award winner for his long career of dedicated service.

CAB’s Paul Dykstra, beef cattle specialist, will lead off Wednesday’s events with ideas on progressive feeder cattle marketing. Focused on maximizing cow-calf investments, Dykstra will address alternative ways of adding value to high-quality calves when retained ownership is not feasible.

“We know that feeder-calf marketing is not a one-size-fits-all topic,”

Lee says. That’s why Dykstra offers insight into several types of commercial operations.

Randy Blach, Cattle-Fax CEO, will wrap up the conference with a 20-year forward look at the industry’s future. He brings his extensive knowledge in market trends and analytics to provide unsurpassed insight on what to expect in the next couple of decades.

At the end of each presentation, attendees will have the opportunity to ask questions directly to the speakers.

Feeding Quality Forum

will be a free resource to those who register, thanks to its sponsors: AngusLink, Diamond V, Feed-Lot magazine, Micronutrients and Zoetis.

Registration is now open at [www.feedingqualityforum.com](http://www.feedingqualityforum.com), where you can also find the full agenda and learn more about the speakers.

“Feeding Quality Forum is just two hours a day, for two days,” Lee says. “At no cost other than your time, we feel like it’s a great investment to access and interact with some of the best industry leaders available.”

## Growing bred replacement heifers

**By Glenn Selk, Oklahoma State University Emeritus Extension animal scientist**

Bred replacement heifers that will calve in late January and February need to continue to grow and maintain body condition. Ideally, two-year-old heifers should be in a body condition score 6 at the time that their first calf is born.

This allows them the best opportunity to provide adequate colostrum to the baby, repair the reproductive tract, return to heat cycles, rebreed on time for next year, and continue normal body growth. From now until calving time, the heifers will need to be gaining 1 to 1 1/2 pounds per head per day, assuming that they are in good body condition coming out of summer.

Pregnant replacement heifers will need supplemental protein, if the major source of forage in the diet is bermuda grass or native pasture or grass hay. If the forage source is adequate in quantity and average in quality (6 - 9% crude protein), heifers will need about 2 to 2.5 pounds of a high protein (38 - 44% CP) supplement each day.

This will probably need to be increased with higher quality hay (such as alfalfa) or additional energy feed (20% range cubes) as winter weather adds additional nutrient requirements. For more details about the nutrient

needs of all classes of beef cattle download and read Oklahoma State University Extension Circular E-974 “Nutrient Requirements of Beef Cattle.”

Wheat pasture (if adequate rainfall produces growth) can be used as a supplement for pregnant replacement heifers. Using wheat pasture judiciously makes sense for pregnant heifers for two reasons. Pregnant heifers consuming full feed of wheat pasture will gain at about three pounds per head per day. If they are on the wheat too long the heifers can become very fat and may cause dystocia (calving difficulty).

Also, the wheat pasture can be used for gain of stocker cattle or weaned replacement heifers more efficiently. If wheat pasture is used for bred heifers, use it as a protein supplement by allowing the heifers access to the wheat pasture on at least alternate days. Some producers report that one day on wheat pasture and two days on native or bermuda will work better. This encourages the heifers to go rustle in the warm season pasture for the second day, rather than just stand by the gate waiting to be turned back in to the wheat. Whatever method is used to grow the pregnant replacement heifers, plan to have them in good body condition (BCS=6) by calving so that they will grow into fully-developed productive cows.

## K-State vets: Watch for summer respiratory condition in calves

**By Lisa Moser**

When talking to ranchers about cattle health concerns in the summer, fly control and pinkeye will often come to mind, but one condition that can lead to calf death is pre-weaning pneumonia.

“Research has shown that pre-weaning calf pneumonia appears in about 20% of the herds in the country annually,” said Brad White, K-State veterinarian and director of the Beef Cattle Institute. “Of that 20%, there is a group that experience significant problems.”

White and veterinary colleague Bob Larson discussed their role in the study and the results during a recent Cattle Chat podcast.

“This pneumonia peaks when the calf is about four and a half months old, so for spring born calves we

typically see the condition appearing in July and August,” White said.

Larson said that often pre-weaning pneumonia appears first in some of the bigger, stronger calves in the pasture.

White explained that the larger calves tend to be the older calves, and the natural immunity that they got from their dam’s colostrum at birth is starting to fade.

Larson added that some cattle ranchers aren’t watching for this condition because cattle out on pasture don’t display the typical risk for factors for respiratory disease, such as comingling with new animals in confinement.

“This respiratory disease is surprising because it seems to show up sporadically. Some herds go years between outbreaks and other herds have it

happen in consecutive years,” Larson said.

White noted that the study alerted the scientists to some factors for increased risk.

“Along with the time of year, calves grouped together tended to spread the sickness,” White said. As an example, White cited, management practices that involve creep feeding or intensive grazing often lead to calves gathering in tighter spaces.

“Also, calves don’t naturally socially distance, but rather group themselves together in the pasture,” White said.

A pneumonia prevention plan may include avoiding management that forces calves to group closely together and a vaccination prevention protocol, they said.

“Work with your veteri-

narian and Extension specialist to see what the right vaccine prevention protocol is for your area,” White said. “It may mean vaccinating the calves when you work them at 60-70 days of age to give them an extra boost of protection.”

To hear the full discussion on pre-weaning pneumonia, listen in to the BCI Cattle Chat podcast online.

### 568± Acres BARBER COUNTY, KS LAND AUCTION

**Online, In-Person & Phone**  
WEDNESDAY, AUGUST 26, 2020 — 1:30 PM  
SALE HELD: THE HERITAGE CENTER,  
1056 SE ISABEL RD. - MEDICINE LODGE, KANSAS  
SELLERS: BETH A. & JACK H. CIRCLE  
JOINT REVOCABLE TRUST

Following information applies to all tracts: Possession on all 4 tracts: Acres planted to Soybeans following 2020 Harvest. Tracts 3 & 4 have acres not planted to Soybeans, possession is on closing or with a letter of Bank Approval and after the contract is signed by all parties. Earnest Money: \$10,000.00 on each tract down day of sale. Mineral Rights: Pass to buyer. Taxes: 2020 taxes prorated to day of closing. 2019 and any previous taxes paid by the seller. Title Ins. & Escrow Agent Fee: 50% Buyer, 50% Seller, Slamal and Swayden Inc Title & Escrow Agent. Closing: On or Before Sept. 28th, 2020. TRACT 1 will sell at 1:30 pm: Legal: NW4 of 23-34-10, Barber Co., KS. 162± acres Planted to Soybeans. From Hazelton KS 1 mile S. and 1 mile E. Taxes: \$1,362.40. TRACT 2 Legal: S2SE4 of 23-34-10, Barber Co., KS. 82± acres. Planted to Soybeans. From Hazelton 2 miles S. and 1 1/2 miles E. Taxes: \$568.74. TRACT 3 Legal: SW4 of 26-34-10, Barber Co., KS. 162 ± acres. 100± acres planted to soybeans. Some out ground. From Hazelton 3 miles S. and 1 mile E. Taxes: \$1,312.40. TRACT 4 Legal: NW4 of 35-34-10, Barber Co., KS. 154.80± acres. 30 ± acres planted to soybeans. Some out ground. From Hazelton 3 miles S. and 1 mile E. Taxes: \$953.84. Announcements Day of Sale take precedence over any faxed, written, printed or internet materials.

### 305± Acres RENO & PRATT COUNTY, KS LAND AUCTION

**Online, In-Person & Phone**  
MONDAY, AUGUST 31, 2020 — 1:30 PM  
SALE HELD: HAMM AUCTION CENTER, 107 NE SR 61,  
PRATT, KANSAS

SELLERS: KENNETH G. SHANLINE TRUST NO. 1  
Following information applies to all 3 tracts: Possession on Closing. Closing on or Before Sept. 30th, 2020. Title Ins. & Escrow Agent Fee: 50% Buyer, 50% Seller; Security 1st Title & Escrow Agent; Taxes: 2020 taxes prorated to Closing Day. 2019 and any previous taxes paid by the seller. Minerals: Minerals and any Mineral leases pass to the Buyer. Earnest Money \$5,000.00 on each tract. CRP Payment: 2020 CRP payment remains with the Seller. 2021 CRP payment passes to the Buyer. Buyer must comply with all the rules and regulations regarding the CRP. TRACT 1 will sell at 1:30 pm: Legal: NW4 of 11-26-11 (160 acres±) Pratt Co., KS. CRP INFO: 117.3 acres at \$39.66 per acre or \$4,652.00. Balance is 39.95± acres of Pasture and 3.39± acres of farmstead. CRP Expires on 09/20/2021. 2019 Taxes \$1,459.76. TRACT 2 Legal: N2 SE4 of 07-26-10 (80 acres±) Reno Co., KS. CRP INFO: 78.45 acres at \$47.65 per acre or \$3,736.00. CRP Expires on 09/30/2021. 2019 Taxes: \$828.93. TRACT 3 Legal: W2 SW4 of 18-26-10 (65 acres±) Reno Co., KS. CRP INFO: 64.2 acres at \$50.10 per acre or \$3,217.00. CRP Expires on 09/30/2025. 2019 Taxes \$807.52. Announcements Day of Sale take precedence over any faxed, written, printed or internet materials.

John Hamm/Auctioneer  
620-450-7481  
107 NE State Road 61, Pratt, KS 67124  
[www.hammauction.com](http://www.hammauction.com)



## Marysville Livestock Sales

Every Thursday at 12 Noon

Bill Keesecker, Manager • 785-562-1015  
1180 US Hwy. 77, P. O. Box 67, Marysville, KS 66508

PLEASE VISIT OUR WEB SITE TO SEE OUR LATEST DETAILED MARKET REPORTS AND UPCOMING CONSIGNMENTS AND SPECIAL SALES: [www.marysvillivelivestock.com](http://www.marysvillivelivestock.com)

STEERS/BULLS		Market Report for 8-13-2020.	
300-400#	N/A	250 HEAD SOLD	
400-500#	\$165.00-\$157.00	HFRETTES:	
500-600#	\$158.00-\$145.00	N/A	
600-700#	\$157.00-\$139.00	COWS-HIGH YIELDING	
700-800#	\$151.00-\$139.00	1680#-1210# \$85.00-\$68.00	
800-900#	\$142.00-\$129.50	COWS-LGT WT & LOW YIELDING	
900-1,000#	N/A	1535#-970# \$65.00-\$45.00	
HEIFERS		BULLS:	
300-400#	\$165.00-\$158.00	2020#-1190# \$97.00-\$86.00	
400-500#	\$160.00-\$149.00	FIELDMEN	
500-600#	\$150.00-\$141.00	Jim Dalinghaus 785-799-5643 Baileyville, KS	
600-700#	\$139.00-\$128.00	Dave Bures, Auctioneer 402-239-9717 Odell, Nebraska Barn Phone • 785-562-1015	
700-800#	\$133.00-\$172.00	Jeff Cook 785-564-2173 Hanover, KS	
800-900#	\$125.00-\$111.00	Greg Anderson 785-747-8170 Waterville, KS	
FIELDMEN		Trevor Lundberg 785-770-2271 Frankfort, KS	
		Taylor Schotte 785-268-0430 Marysville, KS	

## Update on unsolicited seeds from China

USDA’s Animal and Plant Health Inspection Service (APHIS) said it had identified 14 different species so far in the unsolicited seed packets sent to residents in several states, including Texas. Based on preliminary analyses of the seeds collected, most appear to be a mix of ornamental, fruit and vegetable, herb and weed species. USDA has not identified any link to agroterrorism but said the situation is “evolving,” and that it is working closely with federal authorities to ensure that it evaluates every possibility. USDA urges anyone who receives an unsolicited package of seeds to immediately contact their state plant regulatory official or APHIS state plant health director. Please hold onto the seeds and packaging, including the mailing label, until someone from your state’s department of agriculture or APHIS contacts you with further instructions.

## AUCTION

SATURDAY, AUGUST 29, 2020 — 10:00 AM

Auction in the Fairgrounds Commercial Building at M & 9th Streets in BELLEVILLE, KS

**ANTIQUES & COLLECTIBLES**  
Fenton pcs. inc: lamps, epergne, cruets, baskets, vases, shoes many quality pieces; carnival glass bowls; perfume bottles; handpainted bowls; table sets; water sets; Imperial glass pcs.; Czech vases, covered pcs, water sets, other; flash glass pcs.; red etched pcs.; Cherry Blossom pink Depression; toothpick holders; bell collection; Cape Cod; Elmer Fudd glasses; lg. asst. of good glass; Ebber wagon tin advertising sign; early fancy wall mirror; walnut oval marble top parlor tables; lamp tables; sev. parlor tables; oak parlor tables; treadle sewing machine; organ top shelf; modern corner curio cabinet; modern oak china cabinet; 2 wash benches; child’s rocker; camel back trunk; pictures inc: Ruane Manning prints, Richard Bishop etching; 2 bracket lamps; Aladdin lamp; asst. jewelry inc: pearls; watches; purses; 1950s TV; Kansas car tags most Republic Co.; small advertising thermometers; Schlitz & Bud advertising; crocks inc: (3 gal Red Wing jug, 5 gal brown jug, KoRec chicken water, Mialli Pottery 2 gal water cooler; 5 gal Diamond water cooler, Crown 2 gal water cooler, Cherry Blossom pitcher, crock bowls, sev. other crocks); riding horse; scooter; toys inc: (Sotoy sew-

ing machine; Dick Tracy Bonny Braids game; 1/16th farm toys, tin US Air Force plane, cast iron wagons, trucks, many other toys); collectible pocket knives; Number 1 wooden 6 gal churn; oak wall telephone; Rock Island & P&O cast iron seats; mini stoves & irons; match holder; dough bucket; sad iron; ice tongs; hay knives; scales; ice cream dipper; Dazey churn; many farm primitives; kitchen primitives; Coke bottle carrier; cast iron pans; spool collection; Royal typewriter; ISIS cane; arrowheads; jars & bottles; marble; asst. belt & bottles; assortment other collectibles.

**JOHN E. & GLADYS SHORNEY ESTATES**  
Auction Conducted By: THUMMEL REAL ESTATE & AUCTION LLC \* 785-738-0067

## AUCTION

SUNDAY, AUGUST 30, 2020 — 12:30 PM

Morris County 4-H Building 612 US Hwy 56 - COUNCIL GROVE, KS  
DIRECTIONS: 1 mile east of Council Grove on US Hwy 56. WATCH FOR SIGNS.

**GUNS SELL AT 1:00**  
Winchester Md.1200 12ga shotgun, pump, good cond.; Taurus ET-22 pistol, like new; Ruger 77/22 rifle, bolt action, new; Ruger Target Ranch rifle, 223 cal., SS, laminated stock, new; single shot 12 ga. shotgun.

**FURNITURE**  
La-Z-Boy SW reclining sofa, very good; 2 La-Z-Boy recliners: oak bdr set with queen size bed, dresser and mirror, very good; 2 oak platform rockers and ottomans; oak dining table and 4 chairs; oak end tables; wicker chairs; small oak desk; pine bdr set with queen size bed & chest of drawers; floral sofa; Phillips, Insignia and Toshiba flat screen TVs; walnut veneer chest of drawers, dresser and mirror; computer desk; oak TV stand; full size & twin beds; Dimplex electric heating stove.

**COLLECTIBLES, TOOLS, SHOP ITEMS & MISC.**  
Various nice memorabilia; numerous gift items; large crystal paper weight; various cups & saucers; glass handled basket; Pyrex mixing bowls; Fiesta pcs.; several chickens; misc. glassware; wood carpenter’s box; Puma air compressor; HD shop cabinet on casters; Craftsman router & table; Master Mechanic 10” table saw; Delta miter saw; Mark bench grinder; Craftsman scrolling saw; shop vac; various power & hand tools; extension cords; air hoses; large selection of misc shop items; dinnerware, stoneware & kitchen items; Rival roaster oven; large George Foreman electric grill; Kenmore gas grill; patio glider; golf club & accessories; pull type thatcher; lawn cart; push mower; snowblower.

**So everyone’s Note: Very clean auction. We ask that you social distance and wear face masks so everyone can stay safe. Thank you.**

**The Late ELDON (Bud) & CHARLOTTE FIELDER & ANOTHER SELLER**

Terms: Cash or Good Check. Not Responsible for Accidents.  
Statements made day of auction take precedence over printed material.  
Lunch available.

**HALLGREN REAL ESTATE & AUCTIONS, LLC**  
ALTA VISTA, KANSAS • 785-499-5376  
GREG HALLGREN 785-499-2897  
JAY E. BROWN 785-223-7555  
e-mail: [ghallgren@live.com](mailto:ghallgren@live.com)  
[www.hallgrenauctions.net](http://www.hallgrenauctions.net) • [KSALink.com](http://KSALink.com)



# 2020 GEARY COUNTY FAIR LIVESTOCK GRAND AND RESERVE CHAMPIONS



Tava Gustafson won Grand Champion Market Beef with her 1274-pound Hereford. Gustafson was also awarded Grand Champion Beef Showmanship honors.



This 1460-pound Gelbvieh owned by Cody Brown was selected as Reserve Champion Market Beef. Brown was also selected as Reserve Champion Beef Showman.



Tava Gustafson took home Grand Champion Breeding Beef for her Hereford Cow/Calf Pair.



The Reserve Champion Breeding Beef at the Geary County Free Fair was a Gelbvieh Aged Cow shown by Kaycee Brown.



Cade Snider earned Grand Champion Bucket Calf in the 7-9 year old division.



The Grand Champion Bucket Calf in the 10-12-year-old division was awarded to Morgan Nabus.



Reserve Champion Bucket Calf in the 7-9-year-old division was earned by Tyler Proietti.



Charles Strauss was awarded the Reserve Champion Bucket Calf in the 10-12-year-old division.



Kacey Butler won Grand Champion honors with her 237-pound Crossbred in the Market Swine division. Butler was also awarded Grand Champion Swine Showmanship honors.



Cody Brown's 264-pound Crossbred hog was selected as Reserve Champion Market Hog. Brown also took home the award for Reserve Champion Swine Showman.



Kacey Butler won Grand Champion Market Lamb honors with her 153 pound Speckle at the Geary County Free Fair.



This 137-pound Hampshire lamb owned by Alli Lietzan was awarded Reserve Champion Market Lamb honors by judge Glenn Brunkow at the Geary County Free Fair.



Kacey Butler's Dorset Spring Ewe Lamb was selected as the Grand Champion Breeding Sheep at the Geary County Free Fair. Butler was also named Grand Champion Sheep Showman.



This Dorset Advantage Spring Ewe Lamb shown by Kaitlyn Butler was chosen as Reserve Champion Breeding Sheep at the Geary County Free Fair. Butler was also named Reserve Champion Sheep Showman.



Lindsey Ascher took home Grand Champion Breeding Goat honors from the Geary County Free Fair. Ascher also earned the Grand Champion Goat Showman award.

**Congratulations to all the Geary County 4-H'ers from these area businesses!**

Pearl Gross Owner Emergency Service

**GROSS WRECKER SERVICE**

Tow anything large or small **785-238-4279** **INSIDE STORAGE**  
912 E. 7th

Mailing Address: P.O. Box 202, Junction City, KS 66441

**GTB**  
Custom Meats Inc.  
"You still can't beat our meat!"

**315 S Main St • Riley, KS**  
**(785) 485-2595**

**HARRIS CROP INSURANCE, LLC**

We are a farmer owned agency serving Kansas farmers since 1981.

**Crop Insurance Is All We Do**

- Crop Hail • Multi-Peril • LRP • PRF •

785-479-5593 or Toll Free 888-408-7487  
**1207 Hwy. 15 • Abilene, KS 67410**  
This agency is an equal opportunity provider.  
**www.harriscropinsurance.com**





# 2020 GEARY COUNTY FAIR

## LIVESTOCK GRAND AND RESERVE CHAMPIONS



Reserve Champion Breeding Goat was awarded to Kaitlyn Butler at the Geary County Free Fair. Butler also took home the Reserve Champion Goat Showman award.



Emma Hinds took home the Grand Champion Dairy Goat award at the Geary County Free Fair.



During the Geary County Free Fair, the Reserve Champion Dairy Goat was awarded to Emma Hinds.



Tava Gustafson's 8-pound entry was chosen as the Grand Champion Market Goat at the Geary County Free Fair.



The Reserve Champion Market Goat at the Geary County Free Fair weighed in at 89 pounds and was shown by Kaycee Brown.



The Grand Champion Horse at the Geary County Free Fair was an aged gelding shown by Grant Slough. Slough was also named Grand Champion Horse Showman.



The Reserve Champion horse at the Geary County Free Fair was an aged mare shown by Tava Gustafson.



Taylor Gustafson was named Reserve Champion Horse Showman at the Geary County Free Fair.



Candid photos from Geary County Fair Facebook Page.



**These area businesses are proud to support the hard work of all Geary County 4-H'ers**

**TOWN & COUNTRY**  
**VETERINARY HOSPITAL, PA**

- SMALL AND LARGE ANIMAL PRACTICE
- MEDICAL, SURGICAL & DENTAL CARE
- LABORATORY DIAGNOSTICS
- ULTRASOUND
- GROOMING
- FARM & RANCH CALLS

817 S. Washington St.  
 Junction City, KS 66441

**785-762-3901**

ROBERT G. HAYNES DVM MS  
 BRANDY SHAMBURG DVM

[www.tcvet.biz](http://www.tcvet.biz)

*Congratulations to the Geary County Fair Winners!*

**MUNSON ANGUS FARMS**

**MUNSON'S PRIME RESTAURANT**

785-238-1135

**Congratulations to all 4-H Participants!**

802 N. Washington  
 116 W. 8th Street  
 540 W. 6th Street  
 1801 W. Ash Street  
 521 W. Chestnut  
 Inside Walmart Supercenter  
 Junction City, KS 66441

**Central National Bank**  
 Money for Life

Member FDIC [www.centralnational.com](http://www.centralnational.com)

# KSU ASI's O'Quinn presented AMSA Distinguished Achievement Award; two students recognized by AMSA

Dr. Travis O'Quinn, Kansas State University Department of Animal Sciences and Industry (ASI) associate professor, was presented the Distinguished Achievement Award for 2020 by the American Meat Science Association (AMSA). The award recognizes young AMSA members who demonstrate significant skills in muscle foods research and technology that contribute to the animal products industry and the AMSA.

The award was presented Thursday, August 6 during the Virtual 66th International Congress of Meat Science and Technology (ICoMST) and the AMSA 73rd Reciprocal Meat Conference (RMC) awards presentation.

“Travis is a well-deserving recipient of this recognition from AMSA,” says Dr. Mike Day, K-State ASI department head. “The award recognizes an impressive program of research and technology in meat science. Recognition for this aspect of his program is even

more notable as one considers it was attained in concert with excellence in teaching and coaching the K-State Meat Judging Team. Congratulations to Travis and a sincere thank-you for the leadership and service he provides the ASI Meat Science program.”

Originally from League City, Texas, O'Quinn received his bachelor's and master's degrees in animal science from Texas Tech University. Then went on to receive his doctorate in meat science from Colorado State University. Following graduation, he returned to Texas Tech University as a senior research associate. In 2014, he joined the KSU ASI faculty in a research and extension role, which has now transitioned to primarily teaching and research.

O'Quinn's research has played an important role in the meat science industry today. He has been the author or co-author of 49 peer-reviewed journal articles and 97 research abstracts presented at regional, national and international meetings. His research primarily focuses on beef eating quality and the factors impacting beef tenderness, juiciness, and flavor and how these all impact the consumers overall eating experience. He has hosted numerous workshops that involved educating grill masters of all different levels more about the science behind grilling and smoking different types of meat products.

Additionally, O'Quinn serves as the faculty sponsor and head coach of the K-State Meat Judging Team and co-coaches the

Meat Animal Evaluation Team. Both teams have had tremendous success under his leadership. The Meat Judging teams has placed first or second at more than 75 percent of the national contests in which they have competed. In addition, O'Quinn has oversight of the state's youth meat judging program and worked diligently to increase participation in these events since his arrival at K-State, serving as the host-site coordinator for the National 4-H Meat Judging Contest since 2014.

As the state Meat Extension Specialist from 2014 to 2017, O'Quinn focused on consumer education programming on fresh meat utilization, quality, safety and production. He hosted a number of workshops including the very popular “Barbecue 101” program that taught grill masters of all experience levels more about the science behind grilling and smoking. Additionally, he published 36 Extension fact sheets and research reports including a series focused on the types and number of retail cuts consumers could expect from beef, pork, and lamb carcasses when custom processed by small packers. In his Extension role, O'Quinn gave 55 Extension presentations and was interviewed for more than 47 different print, video, and radio news stories with a total reach of more than 3 million viewers/listeners.

O'Quinn is an active professional member of AMSA and has served on a number of committees including the Undergraduate Quiz Bowl Committee, serving as the chair in 2016, the Undergraduate Scholastic Achievement Award Selection Committee, and currently serves as the chair of the AMSA 4-H Meat Judging Advisory Committee. He has also been an active member of the AMSA Intercollegiate Meat Judging Coaches Association since 2009.

Katie Lybarger and Hannah Williams, both Kansas State University Animal Sciences and Industry (ASI) seniors, were presented the 2020 Undergraduate Scholastic

Achievement Award by the American Meat Science Association (AMSA).

The award recognizes students with a potential career in meats and that have shown a strong interest or commitment within the meat science industry.

From Garnett, Lybarger's interest in agriculture and food production was cultivated through experiences in FFA. She was a member of the 2019 reserve national champion meat judging team and on the 2020 champion K-State ASI academic quadrathlon team.

A K-State Ag Ambassador, Lybarger has a secondary major in Global Food Systems Leadership she is also working to obtain a food science minor as well as a certificate in Meat Science. Upon graduation from K-State, she plans to pursue a master's in meat science.

Williams, from Kearney, Nebraska, discovered her passion for agriculture through involvement in 4-H, FFA, and the National Junior Hereford Association. She was also a member of the 2019 reserve national champion meat judging team. She was named a second-team All-American as well as high individual at the Iowa State contest.

Williams has gained meat science experience through undergraduate research projects at K-State and internships. Her first internship was with Corbion working in the meat research lab and gaining an understanding of the bio-ingredient sector of meat science. Additionally, this summer Hannah has worked for Merck Animal Health as a cattle field sales intern.

“These two young women exemplify the high level of excellence, passion, and dedication that the meat science program at Kansas State is built on,” says Travis O'Quinn, K-State ASI associate professor and meat judging team coach. “They truly personify all of the characteristics this award from AMSA honors. We are extremely proud of them and look forward to all of their great accomplishments in the future.”

## Shop Tools \* Pickup \* Household AUCTION

**SATURDAY, AUGUST 29, 2020 — 10:00 AM**  
LOCATION: Wm Carpenter 4-H building, at the fairgrounds, North edge of SCOTT CITY, KANSAS

**PICKUP:** 2013 GMC Sierra pickup, ext. cab, 4x4, auto., 34,500 miles.  
**SHOP EQUIPMENT:** Bench top combo belt sander; Delta bench model sander; General roller sander; 6"x48" belt/disc sander; Delta floor model band saw; 12 1/2" DeWalt portable planer; several wood & bar clamps; Craftsman 125 psi portable air compressor; Craftsman 1/2 hp bench grinder; wooden work bench; Worx compact circular saw; drill bit sets; lots of hand held woodworking tools; DeWalt woodworking tools; Skill miter saw; Delta drill press floor model; Vortex vacuum system; Ryobi BT 3000 table saw/router combo; DeWalt scroll saw; Delta Shop Master drill press, bench model; small Jet wood lathe; several work benches & saw horses; hand tools, screw driver, wrenches, sockets etc.; air bubble; shop vacs; lots of wood working supplies; lots of wooden fasteners, dowel rods etc.; **lots of other items.**  
**FURNITURE & APPLIANCES:** Crosley washer & dryer; Frigid-

aire refrigerator w/top freezer; wooden office desk (nice); wooden dining table & 4-chairs; 4-drawer dresser; (3) Posturepedic regular size beds, like new; night stand; (3) Rust La-Z-Boy recliners; La-Z-Boy tan sofa (nice).  
**LAWN & GARDEN:** JD ZTR riding mower, 100 hrs, 20 hp. motor, 42" deck; DR walk behind string trimmer; Southerland gas powered lawn edger; Husqvarna walk behind string trimmer; Troybilt rear tine self-propelled tiller; lawn fertilizer spreader; gas powered string trimmers; electric pole chain saw; shovels, rakes, hoes etc.; aluminum ramps; aluminum extension ladder; lawn chairs; (3) BBQ grills; garden cart; Pro Life HD hydraulic lawn mower jack; gas powered rear tine tiller; fishing poles.  
**FARM TOY COLLECTION:** 1/16 scale farm toys inc. Case IH; JD; Allis Chalmers; Case; Oliver; CO-OP; Red JD 430 tractor; AgCo Star 4-wheel drive, triples; IHC; Precision chisel plow, special made-not many of these; Crawler tractors; Implements; Some different ones.

Check us out on Facebook & at [www.berningauction.com](http://www.berningauction.com)

**JOHN MICK ESTATE, OWNER**  
**TERMS:** VALID ID required to register. No Exceptions! Cash or approved check day of sale. **NO Credit Cards!** Everything sold as is. No warranties expressed or implied. Not responsible for theft or accident. Announcements day of auction take precedence. **LUNCH SERVED.**  
**NOTICE:** Due to Covid-19, you are responsible for your own SAFETY and HEALTH. The auction company nor the seller will be held responsible. Social guidelines are in place, so please be respectful. We know auctions are a hard place to social distance, so we will have masks and hand sanitizer available. **Enjoy the auction!**

BERNING AUCTION, INC., 812 West M St., Leoti, KS 67861  
620-375-4130

## ONLINE ONLY FARM LIVING ESTATE AUCTION

**BIDDING OPEN NOW!**  
Auction closes August 26 @ 7 pm  
**325 LOTS!** Including: Tractor, Trucks, Trailers, Wagons, Propane/Fuel Tanks, Woodworking, Building Supplies, Tools, Implements, Tires, Farm Related, Livestock Equipment, Antiques, Household, Lawn and Garden, Collectibles and Miscellaneous.

[www.hibid.com/catalog/226727](http://www.hibid.com/catalog/226727)  
Auctioneers: Barnyard Auctions, LLC., Ottawa, KS

## FARM AUCTION REMINDER

**MONDAY, AUGUST 31, 2020 - 9:00 AM**  
Public Auction at the farm located 1 mile west of CLAY CENTER, KS to 1198 18th Rd. on the south side of Hwy. 15.

LIKE NEW BOBCAT, POLARIS, TRACTORS, LARGE AUGER & FARM MACHINERY, NICE PICKUPS, SUBURBAN, TRUCKS & TRAILERS (12:30 PM). LARGE AMOUNT OF SHOP TOOLS & SUPPLIES (sell first); LIVESTOCK EQUIP., HAY, IRON & MISC. ITEMS. ANTIQUES & COLLECTIBLES inc: old Nash Rambler car; 1950s Skelly gas pump

**NOTE:** Please wear masks & adhere to social distancing guidelines. CLERK: Shirley Riek, 526 Fredrick, Clay Center, Ks. 67432  
**LUNCH:** Vathauer Catering Service. Loader tractor available.

**LORENZE KARMANN ESTATE, SELLER**

See last week's Grass & Grain for listings & Go to [kretzauctions.com](http://kretzauctions.com) or [kansasauctions.net](http://kansasauctions.net) for pictures, map and any additional information

Auction conducted by: **Kretz Auction Service**  
Greg Kretz, Salesman & Auctioneer: (785) 630-0701

## Creep feeding beef calves increases your profits!

Key 16 Calf Creep Pellet is recommended 30 to 60 days before weaning. The extra weight gain will produce \$25 to \$50 return per calf over creep feed costs.

Delivery in bulk or bags is available. Contact your local Key Feeds representative.



**FEED** **KEY FEEDS**  
Joseph Ebert, VP/GM  
Fourth & Pomeroy Associates, Inc.  
CALL KEY FEEDS TODAY  
**1-800-432-7423** OFFICE  
Clay Center, Kansas 67432  
BYRON THORESON • 785-630-0161  
Minneapolis Location: JAMES CARR • 785-630-0491  
Tipton Location: TIM WILES • 785-630-1049  
ROD BOHN • 785-630-0846

## JC LIVESTOCK SALES INC.

Wednesday Sale, Hogs NOON • Cattle 12:30 PM

Report from August 12, 2020

STEERS		BRED COWS: \$885-\$910	
3	498	15	605
13	510	66	696
13	525	32	848
13	585		
6	619		
6	703		
32	870		
5	794		
47	884		
18	952		
HEIFERS		BRED COWS: NO TEST	
2	498		
4	502		
6	463		
4	554		

**CONSIGNMENTS FOR AUGUST 19:**  
60 blk X str ..... 850-950 lbs.  
55 blk X str ..... 850-900 lbs.  
**PLUS MORE BY SALE DAY!**

Watch online with [cattleusa.com](http://cattleusa.com)  
(Tab J.C. Livestock Sales) Must register to bid.  
If you need assistance in marketing your cattle please call & we will be happy to discuss it with you.

## CLAY CENTER LIVESTOCK SALES INC.

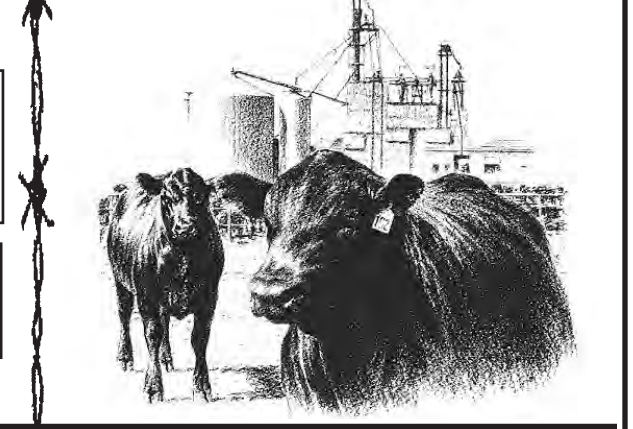
Cattle sales Tuesday, 11:00 AM.

Report from August 11, 2020

Light run of stockers & calves. Market steady with weaned cattle selling strong.

**TOP BUTCHER COW:** \$74.50 @ 1,585 LBS. **BRED COWS:** NO TEST  
**TOP BUTCHER BULL:** \$92.00 @ 2,050 LBS. **PAIRS:** NO TEST

**SPECIAL ANNIVERSARY SALE**  
**TUESDAY AUGUST 25TH**  
**EXPECTING A BIG RUN!**



JUNCTION CITY, KANSAS • Barn Phone 785-238-1471  
Seth Lauer 785-949-2285, Abilene

Clay Center, Ks • Barn Phone 785-632-5566  
Clay Center Field Representatives:  
Tom Koch, 785-243-5124 Lance Lagasse, 785-262-1185



KARL LANGVARDT  
Cell: 785-499-2945

MITCH LANGVARDT  
Cell: 785-761-5814

LYNN LANGVARDT  
Cell: 785-761-5813



## EMPORIA LIVESTOCK SALE CO.

Bonded & Insured

SALE EVERY WEDNESDAY IN EMPORIA, KANSAS AT 11:00 AM

620-342-2425 or 800-835-7803 toll-free • Fax: 620-342-7741

Date: 8/12/20. Total Head Count: 1,731.

COWS: \$64-\$75.00; \$54-\$63.75; \$53 and down.

BULLS: \$90-\$97.00

HEIFERS		STEERS	
12 blk.....	437@155.50	28 mix.....	686@158.00
17 bkbw.....	490@150.00	34 mix.....	637@157.50
7 blk.....	493@141.50	13 blk.....	642@156.00
5 blk.....	505@153.50	10 bkbw.....	670@155.00
17 blk.....	505@149.50	20 mix.....	662@150.00
20 mix.....	572@146.50	5 bkbw.....	674@145.00
7 bkbw.....	579@143.50	8 mix.....	689@137.50
68 mix.....	606@148.25	28 mix.....	733@155.00
7 blk.....	673@143.50	11 bkbw.....	703@154.50
9 blk.....	634@143.00	5 blk.....	716@152.50
28 mix.....	681@143.00	8 mix.....	702@151.75
19 mix.....	604@142.00	11 blk.....	760@149.75
9 blk.....	621@141.50	6 bkbw.....	759@148.50
23 mix.....	692@138.00	26 mix.....	781@148.50
6 bkbw.....	633@134.00	12 blk.....	781@147.50
10 bkbw.....	714@139.50	24 bkbw.....	799@146.75
5 blk.....	703@130.50	15 bkbw.....	781@146.25
55 blk.....	712@139.50	28 mix.....	756@143.00
7 blk.....	718@139.50	18 blk.....	854@144.50
6 blk.....	726@138.00	97 blk.....	869@144.35
13 blk.....	784@135.00	48 blk.....	836@144.25
21 blk.....	822@132.50	19 blk.....	813@143.00
20 mix.....	813@132.00	20 mix.....	838@143.00
63 blk.....	802@131.00	59 mix.....	805@141.00
44 blk.....	887@125.75	12 blk.....	821@140.00
44 mix.....	884@122.00	15 bkbw.....	891@138.50
6 blk.....	897@120.00	6 mix.....	873@136.00
14 blk.....	917@122.00	14 blk.....	897@135.75
		12 blk.....	845@134.00
		52 mix.....	883@133.75
		45 blk.....	910@137.50
		96 blk.....	957@137.10
		19 blk.....	938@135.25
		5 bkbw.....	938@134.00
		17 blk.....	956@133.50

**EARLY CONSIGNMENTS FOR AUG. 19**  
• 35 mix hrs, 575-700 lbs  
• 24 blk & rwi str & hrs, off grass, 600-750 lbs.  
• 85 blk str, no implants, off grass, 650-750 lbs.  
• 27 mix hrs, 775-850 lbs.  
• 62 mix str, 775-850 lbs.  
• 75 mostly blk str, 850-900 lbs.  
• 48 blk & Char str, 850-950 lbs.  
• 57 mix str, 900-975 lbs.  
**PLUS MORE BY SALE TIME**

THANK YOU FOR ALL OF YOUR CONTINUED SUPPORT!  
YOUR BUSINESS IS ALWAYS APPRECIATED!

For Cattle Appraisals Call:

BRODY PEAK, 620-343-5107 GLENN UNRUH, 620-341-0607

LYLE WILLIAMS, Field Representative, 785-229-5457

WIBW 580 - 6:45 A.M. Thurs; KVOE 1400 - 6:30-6:45 A.M. Thurs. & Fri.  
To see more consignments go to: [emporialivestock.com](http://emporialivestock.com)

# RTK photo contest deadline is Aug. 31

The Ranchland Trust of Kansas (RTK) photography contest will be open through August 31. The contest is open to professional and amateur photographers of all ages. Photographs entered showcase the natural beauty of ranching and grazing lands across the state. The competition offers Kansans the chance to explore and capture the many activities, seasons and faces of Kansas' ranching tradition.

Participants should submit photos expressing the mission of RTK: "To preserve Kansas' ranching heritage and open spaces for future generations through the conservation of working landscapes." This may include landscape, livestock and people, with preference to grasslands, grazing land, ranchers, cattle and much more. Participants may enter up to five photos. Entries will be judged by a panel of professionals in the field of photography and by RTK representatives.

All prizes for the contest are sponsored by Wolfe's Camera of Topeka. Wolfe's will award ten photo cards to all ten category winners. Categories include: Grand Prize, Landscape, Livestock, People, Youth (ages 5-17), Kansas Livestock Association member, Fan Favorite via Facebook voting and three honorable mentions. The grand prize winner will receive their choice of an 11"x 14" stretched photo canvas or a 12" x 18" metal print of their winning photo.

For full contest rules and to enter, visit [www.ranchlandtrustofkansas.org](http://www.ranchlandtrustofkansas.org) and find Photo Contest on the News and Events page. For questions, please contact Samantha Weishaar at (785) 273-5115 or [samantha@kla.org](mailto:samantha@kla.org).

# Use of corn as an acceptable feedstock clarified by the Department of Energy

An important step forward to driving demand for corn was recently achieved, thanks to the work of state and national corn growers staff and members of the National Corn Growers Association (NCGA) Market Development Action Team (MDAT). In the most recent Funding Opportunity Announcement (FOA), the Department of Energy's (DOE) Bioenergy Technologies Office (BETO) clarified that corn grain is an acceptable feedstock. This means that starch-derived sugars, specifically starches from field/feed corn, were clarified as acceptable.

"This is an important evolution in how DOE interprets legislative intent," said NCGA market development director Sarah McKay. "Given U.S. corn growers' ability to efficiently produce, it is clear that corn can not only meet the needs of existing markets but can enable exciting new markets for renewable materials. We are excited to continue working with BETO and other government agencies to lay the groundwork and develop a solid foundation for future markets for

corn."

"We really appreciate the time that the senior leadership at DOE took to discuss policy with us, and we are looking forward to seeing new research focused on corn renewable chemicals," said Dan Wesley, chair of the Market Development Action Team.

The timing of this announcement is important because it means those looking for funding opportunities through BETO's Plastics Innovations Challenge can use corn as a base for recycling technologies in the manufacture of new plastics. BETO works to develop industrially relevant technologies to enable domestically produced biofuels and bioproducts.

"One of the primary areas of potential is in bioplastics," McKay added. "Now, BETO is able to use corn grain for agency funding and testing in national laboratories. Corn is an abundant, affordable, sustainably produced product, making it a competitive crop to use for bioplastics and other bioproducts."

An example of a product that could now be developed to use corn grain

as a feedstock is single-use plastics such as water bottles and plastic bags. Learn more about corn as an industrial feedstock and NCGA's initiatives around new uses at [ncga.com/newuses](http://ncga.com/newuses).

# Kansas Soybean Association announces CEO retirement, seeking candidates

Kenlon Johannes, Kansas Soybean Association CEO and administrator for the Kansas Soybean Commission, informed the KSA board of directors of his intention to retire in March 2021.

Johannes has an accomplished 40-year career in the soybean industry, including 20 years at Kansas Soybean. Under the direction of Kansas soybean boards of directors, he manages and implements production and utilization research, domestic and international market development and education projects for KSC and federal and state lobbying programs for KSA.

"I have worked with Kenlon firsthand since becoming involved with KSA in 2007," says Dwight Meyer, 2020 KSA president. "It is an honor to

have had Kenlon as our leader for 20 years. I enjoy working with him and I know many other directors and commissioners would agree. Earning the American Soybean Association Pinnacle Award, a top national honor, proves that Kenlon's peers throughout the soybean industry think highly of him and his leadership."

Previously, he served as the executive director of the Missouri Soybean Association and Merchandising Council and the Wisconsin Corn and Soybean Program. Johannes was instrumental in the initial development of the biodiesel industry in the United States and served as the first executive di-

rector of the National Biodiesel Board.

Going forward, Johannes plans to spend time with his family and wife, Jennifer, as well as take up some consulting opportunities.

A committee comprised of seven Kansas farmer-leaders initiated a search for Johannes' successor. More information on the application process is available on the HR Partners website. Interviews are planned for fall with a new CEO expected to be named by early 2021.

All questions and requests for information about this position should be directed to HR Partners via <https://www.hrpartners.com/jobs/1418-ksa-ceo>.

## Horse Sale

**Anderson County Sales Co.**  
Garnett, Ks

**Friday, August 21, 6 p.m.**

*Tack First • Horses Follow*

Sale Day # 785-448-3800  
Ron Ratliff 785-448-8200  
Earnie Schenker 417-309-9352

## SPECIAL COW SALE

**EL DORADO LIVESTOCK AUCTION, INC.**  
2 1/2 Miles East of El Dorado, KS on Hwy 54

**SATURDAY, AUGUST 22, 2020**  
*Expecting 600-700 COWS!*

- 160 black & bwf cows, 3-5 years old, bred to Angus bulls and will start calving Sept 15th for 65 days, cows weigh 1250-1300lbs
- 40 mixed color 3-5 year old cows. Cows are bred to Angus bulls and start calving Sept 15th for 65 days
- 25 mostly black 3-5 year old pairs. Cows not exposed back and have calves weighing 200-250lbs.
- 55 mostly black 4-6 year old fall calvers. Cows start calving Sept 1st for 75 days
- 25 black, bwf, & rwf running age cows. Fall calvers bred to Angus bulls.
- 50 black & red 3-5 year old cows bred to Angus bulls. Cows start calving Sept 15th for 75 days.

**Go to our website for consignment updates**  
[www.eldoradolivestock.com](http://www.eldoradolivestock.com)

**316-320-3212**  
El Dorado, KS  
[www.eldoradolivestock.com](http://www.eldoradolivestock.com)

## Eureka Livestock Sale

P.O. Box 267 Eureka, KS 67045  
620-583-5008 Office 620-583-7475

**Sale Every Thursday at 11:30 a.m. Sharp**

*Like Us On Facebook!*

On Thursday August 13, we had 1,529 head of cattle on an active market.

<b>STEERS</b>	30 bkRd 706@149.00	23 bkRd 596@143.50
7 blk 374@187.00	40 mix 732@148.50	12 bkbfw 692@140.00
15 bkbfw 437@179.75	27 mix 726@144.50	9 bkbfw 702@139.00
12 bkbfw 521@169.00	40 bkbfw 831@139.25	15 bkChr 618@137.25
5 blk 568@161.50	22 bkbfw 780@138.80	14 bkRd 706@137.00
12 bkbfw 599@160.25	19 bkbfw 851@137.25	12 bkbfw 718@134.00
11 blk 654@160.00	10 bkbfw 835@135.50	13 bkChr 709@132.00
6 blk 626@159.75	15 blk 958@133.25	11 bkRd 735@130.00
22 bkbfw 669@158.50	14 bkbfw 890@133.00	37 bkbfw 785@128.85
17 bkRd 679@157.75	20 bkRd 866@131.50	<b>HEIFER CALVES</b>
52 mix 628@156.00	<b>STEER CALVES</b>	25 bkRd 771@126.75
17 bkbfw 714@155.75	12 bkbfw 950@126.75	10 bkbfw 785@125.00
19 mix 634@155.50	<b>HEIFERS</b>	8 bkRd 843@122.00
8 blk 727@154.00	11 bkbfw 405@157.00	4 bkChr 986@117.50
19 bkbfw 732@153.00	4 blk 519@145.75	8 bkChr 1047@98.50
80 bkbfw 718@153.00	11 bkbfw 665@144.00	
11 blk 700@151.00	18 bkbfw 642@143.50	

**Butcher Cows: \$35-\$81.50, mostly \$62-\$74.00.**  
**Butcher Bulls: \$84-\$105.00, mostly \$90-\$97.00.**  
Fat cows selling very active. Cutter cows mostly steady to \$2 lower. Butcher bulls \$2-4 lower.

<b>BUTCHER COWS</b>	2 wf 1570@68.50
1 bwf 1760@81.50	2 wf 1403@67.00
1 blk 1580@81.50	10 bkbfw 1373@65.00
1 bwf 1950@81.00	
1 Brang 1825@80.00	<b>BUTCHER BULLS</b>
1 blk 1740@79.00	1 wf 2095@105.00
1 blk 1915@76.50	1 blk 2055@104.00
1 Brang 1405@75.50	1 blk 2035@97.00
1 bwf 1495@74.00	1 blk 2060@94.00
1 Red 1590@74.00	1 blk 2035@92.00

### EARLY CONSIGNMENTS FOR AUG. 20

- 150 blk Char X str & hfrs, 600-750 lbs, Fall calves, off the cow & dbl. vac.
- 120 mix str & hfrs, 650-850 lbs, long time weaned & vac.
- 83 blk Simm X str & hfrs, 650-800 lbs, weaned & dbl. vac.
- 15 Rd Angus str & hfrs, 500-600 lbs.

We appreciate your business!

**Ron Ervin - Owner-Manager**  
Home Phone - 620-583-5385  
Mobile Cell 620-750-0123

**Austin Evenson- Fieldman**  
Mobile Cell 620-750-0222

If you have any cattle to be looked at call Ron or Austin

**PAOLA LIVESTOCK AUCTION, INC.**  
P.O. Box 251 • 26701 Eagle Drive • Paola, Kansas 66071  
Phone 913-294-3335

## LAND AUCTION

**440 acres m/l of Quality Farmland in Miami County, KS**  
36355 W. 263rd St., PAOLA, KS 66071 MLS#2230979

**TUESDAY, AUGUST 25, 2020 - 6:30 PM**  
Auction held at the Paola Livestock Auction,  
26701 Eagle Drive, PAOLA, KS 66071

This will be a **LIVE AUCTION** sold by *World Champion Livestock Auctioneer Charly Cummings.*  
WE WILL ALSO BE TAKING INTERNET BIDS.

440 Acres to be sold as an entirety or split into 3 tracts of  
1) 320 acres +/- \* 2) 80 acres +/- \* 3) 40 acres +/-

**THOMAS M. MANG PROPERTY**  
Paul & Patricia Morano, Administrators

**OPEN FARM TOUR: Saturday, Aug. 22, 9 am-2 pm**  
*Steve will be available for appointments also.*

Property Includes: 8 ponds, several creeks and plenty of cover for wildlife. Perfect for Farming or Great Hunting Ground. Currently a productive working farm with 50 +/- acres of income producing crop ground & 80 +/- acres of brome/mix hay ground. Balance of farm in multiple, fenced fescue pastures. (2) 1,000-bushel bins & (2) 3300-bushel bins with drying floors. Many outbuildings and older farmhouse. Rural & well water both available. 7 miles from I-35. GREAT LOCATION! This property has been in the same family since 1942. Any announcements on the final day of the auction supersede previous marketing.  
**For pictures & more information, please contact:**

Steve Cutshaw, Listing Agent  
913-963-4096  
[steve@cutshawproperties.com](http://steve@cutshawproperties.com)  
[www.cutshawproperties.com](http://www.cutshawproperties.com)

[www.PaolaLivestockAuction.com](http://www.PaolaLivestockAuction.com)

Josh Bourquin, 913-731-4240  
Maurie Bourquin, 913-731-4348  
Paul Morano, Administrator, 970-227-4083

## EL DORADO LIVESTOCK AUCTION, INC.

### 316-320-3212

Fax: 316-320-7159  
2595 SE Highway 54, P.O. Box 622,  
El Dorado, KS 67042

**Market Report - Sale Date 8-13-20. 3,306 Head.**  
300-400 lb. steers, \$100-\$179 heifers, \$150-\$160; 400-500 lb. steers, \$135-\$164; heifers, \$120-\$156; 500-600 lb. steers, \$130.50-\$164.50; heifers, \$140-\$151.70; 600-700 lb. steers, \$105-\$164; heifers, \$103-\$147; 700-800 lb. steers, \$108-\$153.50; heifers, \$115-\$136.60; 800-900 lb. steers, \$104-\$141.25; heifers, \$111-\$131.85; 900-1,000 lb. steers, \$103-\$133.35; 1000-1100 lb. steers, \$119-\$123.50. **Trend on Calves:** Steady to \$4 higher with strong demand. **Trend on Feeder Cattle:** \$2-\$3 higher on feeder heifers; steady to \$2 higher on steers. **Butcher Cows:** high dressing cows \$60-\$69.50; Avg. dressing cows \$45.50-\$56; low dressing cows \$30-\$45. **Butcher Bulls:** Avg. to high dressing bulls \$75-\$92.50. **Trend on Cows & Bulls:** steady to \$4 lower on a smaller offering.

**Some highlights include:**

<b>HEIFERS</b>	10 mix 576@155.50
7 blk 544@149.00	54 blk 607@164.00
100 blk 577@151.70	16 mix 682@156.60
27 mix 589@141.00	64 blk 687@154.75
13 mix 609@145.50	17 blk 761@145.50
29 mix 641@139.50	57 blk 766@147.25
74 blk 664@144.00	23 mix 788@144.00
63 mix 749@136.60	64 mix 802@140.50
121 blk 771@135.60	104 blk 809@141.00
114 blk 849@131.85	119 blk 855@141.25
68 blk 878@128.00	120 blk 892@137.50
<b>STEERS</b>	125 blk 929@135.35
11 bawlers 545@151.00	

**THURSDAY, AUGUST 20**  
*Please Keep Checking Back for Early Consignments!*

**\*\*SPECIAL COW SALE: SATURDAY, AUGUST 22!**  
**EXPECTING 600-700 COWS**

- 160 blk & bwf cows, 3-5 years old, bred to Angus bulls & will start calving Sept 15th for 65 days, cows weigh 1250-1300lbs
- 40 mixed color 3-5 year old cows. Cows are bred to Angus bulls and start calving Sept 15th for 65 days
- 25 mostly black 3-5 year old pairs. Cows not exposed back and have calves weighing 200-250lbs.
- 55 mostly black 4-6 year old fall calvers. Cows start calving Sept 1st for 75 days
- 25 blk, bwf, & rwf running age cows. Fall calvers bred to Angus bulls
- 50 black & red 3-5 year old cows bred to Angus bulls. Cows start calving Sept 15th for 75 days.

\*\*\*\*\*  
**CHECK OUR WEBSITE AS WELL AS FACEBOOK FOR UPDATED LISTINGS!**  
**STAY TUNED FOR EARLY CONSIGNMENTS!**

We welcome your consignments!  
If you have cattle to consign or would like additional information, please call the office at 316-320-3212

**Check our website & Facebook for updated consignments: [www.eldoradolivestock.com](http://www.eldoradolivestock.com)**  
*To stay up to date on our latest announcements you can "Like" us on Facebook*

<b>Josh Mueller</b> Owner/Manager (316) 680-9680	<b>Steven Hamlin</b> (602) 402-6008 (H) (620) 222-1199 (M)
<b>Chris Locke</b> (316) 320-1005 (H) (316) 322-0675 (M)	<b>Van Schmidt, Fieldman</b> (620) 367-2331 (H) (620) 345-6879 (M)

**Cattle Sale Every Thursday 11:00 AM**

**Central Livestock**  
811 N. Main St.  
South Hutchinson, Ks

[www.centrallivestocks.com](http://www.centrallivestocks.com)

Office: 620-662-3371  
or Matt Hoffman (Owner): 620-727-0913

Hay Auction- Every Tuesday at 9:00 a.m.  
Cattle Auction- Every Tuesday at 10:00 a.m.  
Hog/Sheep/Goat Auction- Every 3rd Saturday  
Horse/Tack Auction- Every 1st Saturday

Results From August 11<sup>th</sup> Sale:

<b>Steers:</b>	<b>Heifers:</b>
400-500# \$141.50-\$176.25	400-500# \$126.00-\$150.00
500-600# \$130.00-\$160.50	500-600# \$128.00-\$149.00
600-700# \$135.00-\$156.50	600-700# \$120.00-\$140.00
700-800# \$131.00-\$156.00	700-800# \$118.00-\$128.00

**Tues., Aug. 25<sup>th</sup> - Holstein Special**  
**Sat., Sept. 5<sup>th</sup> - Horse & Tack Sale**  
**Tues., Sept. 8<sup>th</sup> - Calf/Yearling Special**

**Check website/ Facebook for schedule changes!**

## Holton Livestock Exchange, Inc.

1/2 mile East of Holton, KS on 16 Highway  
Livestock Auction every Tuesday at 12 NOON  
\*\*\*\*STARTING TIME: 12:00 NOON\*\*\*\*

**MARKET REPORT FOR TUESDAY, AUGUST 11, 2020**  
RECEIPTS: 877 CATTLE  
FOR FULL RESULTS, VISIT OUR WEBSITE:  
[WWW.HOLTONLIVESTOCK.COM](http://WWW.HOLTONLIVESTOCK.COM)

<b>STEERS</b>	11 blk red str 749@139.00
4 blk bwf bulls 367@195.00	11 blk char str 770@138.50
2 char str 370@192.50	<b>HEIFERS</b>
3 blk char str 311@187.00	2 blk hfrs 290@171.00
4 char str 441@175.00	4 rwf hfrs 281@170.00
5 blk str 560@171.00	2 blk hfrs 375@165.00
17 char blk str 612@167.00	3 char hfrs 410@161.00
11 blk str 550@166.00	6 blk hfrs 573@146.50
9 blk str 596@164.00	10 mix hfrs 572@146.50
9 mix str 642@162.00	6 blk hfrs 602@144.50
35 blk str 664@161.50	5 blk hfrs 589@143.75
14 blk str 678@160.50	24 blk hfrs 636@142.50
33 char blk str 700@158.25	8 blk hfrs 695@142.00
10 blk str 698@157.75	7 blk hfrs 645@141.25
12 blk str 691@156.50	19 blk bwf hfrs 557@140.50
10 blk str 716@153.00	35 mix hfrs 645@140.50
7 blk gry str 756@150.00	13 mix hfrs 676@139.75
22 blk red str 638@148.75	5 blk bwf hfrs 607@136.00
5 blk str 766@143.50	20 mix hfrs 683@132.00
8 blk char str 671@143.00	14 mix hfrs 805@130.75
37 mix str 807@141.25	12 blk hfrs 747@130.00

**FARM AUCTION FOR CURT BERKEY ESTATE & WYATT FARMS**  
Saturday, September 12, Rossville, KY  
FULL SALE BILL & PICTURES listed at [holtonlivestock.com](http://holtonlivestock.com)

Dan Harris, Auctioneer & Owner • 785-364-7137  
Danny Deters, Corning, Auct. & Field Rep • 785-868-2591  
Dick Coppinger, Winchester, Field Rep. • 913-774-2415  
Steve Aeschliman, Sabetha, Field Rep. • 785-284-2417  
Larry Matzke, Wheaton, Field Rep. • 785-268-0225  
Craig Wischropp, Horton, Field Rep. • 785-547-5419  
Barn Phone • 785-364-4114  
**WEBSITE: [www.holtonlivestock.com](http://www.holtonlivestock.com)**  
EMAIL: [dan@holtonlivestock.com](mailto:dan@holtonlivestock.com)

**View our auctions live at "Imauctions.com"**

