





# Kansas Hay Market Report

Hay market trade slow; demand light; Producers are busy in the fields and the 2020 hay year is well under way. Most producers state first cutting is short and that it has been difficult find hays true value. According to the U.S. Drought Monitor, rain from a cluster of thunderstorms last week in southwest Kansas prevented conditions from worsening there, though southwest Kansas and adjacent eastern Colorado remain very dry, and moderate, severe, and extreme drought persisted across parts of these areas. Abnormal dryness (D0) decreased to 23 pct, moderate drought (D1) held steady at 16 pct, severe drought (D2) was steady at 9 pct and extreme drought (D3) was steady at 2.5 pct. If you have any extra hay to sell and/or need hay here in Kansas, use the services of the Internet Hay Exchange: [www.hayexchange.com/ks.php](http://www.hayexchange.com/ks.php).

### Southwest Kansas

Dairy alfalfa, grinding alfalfa, ground and delivered steady; movement slow. Alfalfa: horse, premium small squares 230.00-240.00, Dairy 1.00/point RFV, Supreme 185.00-226.00, Premium 170.00-195.00, Good 150.00-170.00. Stock or Dry Cow 160.00-165.00. Old crop, Fair/Good grinding alfalfa, 110.00-125.00, new crop grinding alfalfa 115.00-125.00 delivered, with an instance of new crop grinder hay in the bale at 120.00 at the edge. Ground and delivered locally to feed lots and dairies, 145.00-155.00, with a few instances at 165.00. Grass Hay: Bluestem, good small squares none reported, large squares 100.00-110.00. Sudan: large rounds 60.00-70.00. Corn stalks ground and

delivered, 65.00-75.00. Wheat straw: none reported. The week of 5/24-5/30, 7,627T of grinding alfalfa and 1,234T of dairy alfalfa was reported bought/sold.

### South Central Kansas

Dairy alfalfa, grinding alfalfa, ground/delivered, alfalfa pellets, steady; movement slow. Alfalfa: horse, small squares 255.00-275.00. Dairy, 1.00/point RFV, Supreme 185.00-225.00, Premium 170.00-195.00, Good 150.00-178.00. Stock cow, 140.00-150.00. Fair/Good grinding alfalfa, 85.00-100.00, Ground and delivered locally to feedlots 140.00-150.00; Alfalfa pellets: Sun cured 15 pct protein 190.00-200.00, 17 pct protein 195.00-210.00, Dehydrated 17 pct 300.00-310.00. Grass Hay: Bluestem, none reported. Sudan: large rounds 55.00-65.00. Wheat Straw: none reported. The week of 5/24-5/30, 5,368 of grinding alfalfa and 587.5T of dairy alfalfa was reported bought/sold.

### Southeast Kansas

Dairy alfalfa, grinding alfalfa, ground/delivered, grass hay steady; movement slow. Alfalfa: horse or goat, 230.00-240.00. Dairy 1.00/point RFV. Stock cow 140.00-150.00. Fair/Good grinding alfalfa, 115.00-125.00. Ground and delivered, none reported; Grass hay: Bluestem, small squares 125.00-135.00, good, mid squares 105.00-120.00, large squares, 90.00-110.00, large rounds 60.00-65.00. Brome, good, small squares 125.00-150.00, mid to large squares 100.00-110.00, large rounds 70.00-80.00. Wheat Straw: mid and large squares 60.00-70.00, large rounds 55.00-65.00. The week of 5/24-5/30, 1,256T of grass hay was reported bought/sold.

### Northwest Kansas

Dairy alfalfa, grinding alfalfa, ground/delivered steady; movement slow. Alfalfa: Horse or goat, 205.00-215.00. Dairy, Premium/Supreme 1.00/point RFV. Stock cow, fair/good none reported. Fair/good grinding alfalfa,

95.00-105.00. Ground and delivered locally to feedlots and dairies, 125.00-135.00. Sudan, large rounds 55.00-65.00.

### North Central-Northeast Kansas

Dairy alfalfa, grinding alfalfa, ground/delivered, grass hay steady; movement slow. Alfalfa: horse, premium small squares none reported. Old crop dairy 1.00/point RFV, Supreme 185.00-225.00, Premium 170.00-195.00, Good 150.00-170.00. New crop dairy 1.00-1.05/pt. Stock Cow, none reported. Fair/good, grinding alfalfa, 100.00-110.00. Ground and delivered 120.00-130.00. Grass hay: Bluestem, small squares 6.00-7.00/bale, mid to large squares 80.00-90.00, large rounds 55.00-65.00. Brome, small squares none reported, large squares 90.00-100.00, large rounds 55.00-65.00; Sudan, large rounds 55.00-65.00. Wheat Straw: small squares 5.00-6.00/bale delivered, large squares 70.00-80.00, large rounds 55.00-65.00. The week of 5/24-5/30, 707T of grinding alfalfa and 825T of dairy alfalfa was reported bought/sold.

\*\*\*Prices are dollars per ton and FOB unless otherwise noted. Dairy alfalfa prices are for mid and large squares unless otherwise noted. Horse hay is in small squares unless otherwise noted. Prices are from the most recent sales.

\*CWF Certified Weed Free

\*RFV calculated using the Wis/Minn formula.

\*\*TDN calculated using the Western formula. Quantitative factors are approximate, and many factors can affect feeding value. Values based on 100% dry matter (TDN showing both 100% & 90%). Guidelines are to be used with visual appearance and intent of sale (usage).

Source: Kansas Department of Agriculture - Manhattan, Kansas

Kim Nettleton 785-564-6709. Posted to the Internet: [www.ams.usda.gov/mnreports/DC\\_GR310.txt](http://www.ams.usda.gov/mnreports/DC_GR310.txt)

# Wildcat District youth teach at Virtual Discovery Days

A total of eight 4-H members from the Wildcat District had the opportunity to teach at the Virtual

Discovery Days recently. The teens are a part of the Ag Innovators Experience grant that was received in

December. The AIE Grant is sponsored by Bayer Corporation and National 4-H Council. In February, three youth and two adults from the district attended a National training at Iowa State University as part of a team that would come back and train 17 additional youth in the district. The goal of the project is to reach 1,000 youth in seven states, for a total of at least 7,000 youth.

4-H members learned what a watershed is and how we are all connected by one large watershed. We live in the Mississippi River Watershed. Members then learned how different engineering practices can help improve water quality in the watershed. The youth gained knowledge of practices they can do to help with water quality. Each teen learned how to make models of the different practices and in turn show others how to do as well. This class was designed to be hands-on, so when Discovery Days were canceled as a face-to-face event, the teens started talking about doing it via a Zoom class. The class had a total of 24 participants



Wildcat Extension District youth and adults pictured are, top row from left: Shelby Smith, Cheri Nelsen, Corey Humble. Middle row: Johana Walker, Pam Walker, Jenna and Ellen Meseraull. Bottom row: Tucker Leck and Adam McCarter.

from across the state. The youth did a great job teaching in this format and are looking forward to teaching it in person after this fall. If you have a group of kids third grade

through high school that you think would be interested in learning about this, please contact Cheri Nelsen, 4-H & Youth Development agent at [cnelsen@ksu.edu](mailto:cnelsen@ksu.edu) or by phone at 620-

378-2167. For more information, please contact Cheri Nelsen, 4-H and Youth Development, [cnelsen@ksu.edu](mailto:cnelsen@ksu.edu), (620) 378-2167.

## Corteva Agriscience launches new seed brand in the U.S. – Brevant™ Seeds

Corteva Agriscience announces the launch of Brevant™ seeds, a bold, high-performance corn and soybean brand available exclusively at retail locations in the Midwest and Eastern Corn Belt.

Brevant is built on a century of agricultural experience, science and support from Corteva. The new brand will expand retail's access to Corteva Agriscience genetics, traits and technology. Brevant™ brand seed will be available to order this summer for 2021 planting. Brevant seeds will offer more than 200 corn hybrids and soybean varieties.

"Brevant brings a completely new and unique opportunity to retailers and their customers," said Jason Dodd, General Manager for Brevant. "It's the right combination of people and products from an organization that truly cares about your individual success. Access to Corteva Agriscience's genetics and deep germplasm pool through Brevant will be a great new advantage to retail customers."

### Committed to Retailers and Their Customers

The launch of Brevant and the exclusive retail route-to-market in the Midwest and Eastern Corn Belt brings a new, agile

way of doing business with Corteva. This includes a new field structure with sales and agronomy roles, and a sales process driven by Retail Development Teams.

"We are introducing the Brevant brand for farmers who prefer the service and local expertise that retail brings to their farm," said Mike Lozier, Marketing Leader for Brevant. "With Brevant, both retailers and farmers have the freedom to choose a new brand without compromising what's most important to them. We're committed to collaborating with farmers' local retail teams to ensure their farm is always ready for what's next."

### New Brand, Proven Genetics

Brevant seeds may be new in the U.S. market but its performance is well documented in nearly three million head-to-head comparisons. Corn hybrids offered for 2021 planting in the Brevant brand average 7 bu/A more than the competition and Enlist E3® soybean varieties offered for 2021 planting in the Brevant brand average 1 bu/A more than the competition.

Brevant brand corn and soybean portfolios will feature the latest trait technology solutions and a complete line of BMR silage corn, including its proprietary line of Unified® corn silage and TMF hybrids backed by Brevant's highly trained Silage Technology Managers.

### Focused Agronomy Service

Brevant is dedicated to helping retail reach their seed growth potential and customers can expect a higher level of focus and support.

To learn more about the U.S. corn, soybean, silage corn, canola and sunflower seed offerings from Brevant, please contact your local ag retailer or visit [Brevant.com](http://Brevant.com).

**Make. More. Farming.**

**Harvest**  
List your service for free  
Hire services in seconds  
No invoicing  
No waiting for payment

**Hay**  
Sell & buy fast  
Free to list & browse  
Automatic payments  
No waiting for checks

Download the free iPhone app! For Android or desktop, use [www.hitchpin.com](http://www.hitchpin.com)

Use code **GRASSGRAIN** for a discount. Also benefits Grass & Grain

**ARMBIDS.COM**  
**SUMMER SHOOTERS & COLLECTORS GUNS & AMMO AUCTION**  
**ONLINE NOW! ENDS TUESDAY, JUNE 23, 6 PM CST**

Over 600 Lots of Exceptional Quality Firearms & Ammo...to include Colts, Over 100 S&Ws, many with letters & cased, Winchesters, Walthers, Sharps, Springfields, Berettas, Sako, U.S., Springfields, Morinis & Hammerlis Free pistols, cased engraved Brownings, Sig Saur's, Shiloh, DU 50th year dinner gun, Indian trade gun, combination guns, several competition and match grade rifles, many home defense arms, 10,000 plus rounds of ammo, collector ammo lots of Winchester dealer collectibles, bronze statues, reloading supplies. 2012 John Deere 332D skid loader, only 768 hrs.; Starcraft 17' pop-up camper, like new; and much more!

For ONLINE CATALOG See Proxibid.com/Kull or Armsbid.com

**KULL'S OLD TOWN STATION**  
201 SE 59th St., Topeka, KS  
785-862-8800  
Info@Armsbid.com or Dan@ArmsBid.com

**ARMSBID.COM**  
KULL'S OLD TOWN STATION

[www.ArmsBid.com](http://www.ArmsBid.com) or [www.proxibid.com/Kull](http://www.proxibid.com/Kull)  
**One of America's Premier Firearms Auctioneers**

**GRASS & GRAIN**  
**ONLINE ONLY**

**1 year - \$35** Other options also available

Arrives in your Inbox every Monday between 12-1pm  
Email is required.

**TO SWITCH OR SUBSCRIBE CONTACT KEVIN:**  
CALL 785-539-7558 • EMAIL: [agpress3@agpress.com](mailto:agpress3@agpress.com)  
Or stop by: 1531 Yuma St., Manhattan, KS

\*Online edition is FREE to all Paid Mail Subscribers

**GRASSANDGRAIN.COM**

**\*\* ANTIQUE & COLLECTIBLE AUCTION \*\***  
**SATURDAY, JUNE 20, 2020 — 10:00 AM**  
**LOCATED: 801 N. Kansas — FRANKFORT, KANSAS**  
**FURNITURE, PRIMITIVES, COLLECTIBLES, HOUSEHOLD**

Furniture: Walnut dropleaf kitchen table & chairs; 8' bookcase; ornate end table; oak high back wood bed; oak mirrored dresser; 7' walnut dresser w/mirror; oak framed mirror; caned rockers; nice old pictures; Terry Redlin pictures; 4-section room divider; settee; wrought iron plant stands; tiered wood corner shelves; wood easel; cast iron floor lamps; maple queen bed with dresser & mirror; silhouette picture; wood stands; wood 4-drawer file cabinet; humpback trunk; chest of drawers; TV stand; La-Z-Boy divan & recliner; swivel rocker; twin bed; coffee table; occ. chairs; glass top coffee table with metal peacock base; modern "Amish style" elec. fireplace; wicker furniture; 8x10 Oriental rug; **Primitives:** Red Wing 5 gal. water cooler; Red Wing 3 gal. butter churn; Red Wing 5 gal. jug; Red Wing 6 gal. crock; cherry pitter; copper tea kettle; R.S. McGhie Frankfort fan; labeled tins; tobacco tins; marshmallow tins; Aunt Jemima salt & pepper; porcelain qt. baited container; fold up wire egg basket; old phone batteries; thread cabinet; wood serving bowl; candle molds; sm. butter churn; apple peeler; nut grinders; stoneware bowl; rolling pins; washboards; cookie cutters; Thompson's Malted Milk canister; crystal wall coffee grinder; celluloid butler; Padden funeral fans; Crescent & Queen salesman stove reproductions; cast iron boiler; copper boiler; kraut cutter; 4 tine wood hay fork; AC Kent hand planter; manual typewriter; box cameras; Kewpie dolls; 4 oval Kewpie doll pictures; Bear Paw snow shoes; #20 Little Daisy BB gun; Elk Rack tie holder; bean scales; store scales; buck saw; ammo boxes; wood nail holder; brass fire ext.; cistern pump; 2 cast iron kettles; bushel baskets; nail keg; kero lamps. **Glassware:** Handpainted bowls & plates; cruets; glass basket; hvy. pitcher & glasses; pink Depression stemmed glassware; Van Briggie pottery; lots of pressed glass; cups & saucers; brass candlestick holders; knick knacks; wood ducks; books; dresser set; hat pins; Hull vase; head vase; animals on nests; Fenton slipper; dog & fire truck candy dishes; reproduction toys; Tootsie toys; Tonka: Bulldozer & dump truck; Nylint dump truck; Matchbox & Hot Wheels; wood blocks; lg. top; sled; wood kids wagon; **Jewelry from the Glenna Galloway Estate:** 14 kt. diamond earrings; Sterling charm bracelet w/charms; gold filled bangle bracelet; Sterling Mother of Pearl bracelet; Sterling Mother of Pearl ring; silver/gold plated collar necklace; rhinestone bracelet, necklace & earrings; ladies watches, earrings, bracelets, beads; Ebony elephant, lion & impala from Kenya; Soapstone polar bear & seal; sm. brass Egyptian sculpture; 7 Giuseppe Cappe figurines. **Guns:** Winchester 1200 12 ga. shotgun; Remington 870 20 ga. shotgun. **Household:** Pyrex; Corningware; kitchen utensils; pots & pans; glasses; dishes; TV trays; reading lamp; liners; bath chair; floor lamps; metal shelving; turkey fryer; Hickory elec. smoker; hand tools; fruit jars; **JD LA 100 riding lawn mower, 42" cut, 19.5hp;** Poulan Pro push mower; Craftsman 30" lawn sweeper, thatcher & spreader; 3x3' lawn cart; 2-wheel dolly; 8' wood ladder; lawn & garden tools; cane poles; other items! **For pictures see website!**

[www.olmstredrealestate.com](http://www.olmstredrealestate.com) • [www.marshallcountyrealty.com](http://www.marshallcountyrealty.com)  
**DONNA & NILWON (Nick) KRAUSHAAR ESTATE**

**AUCTIONEERS**  
Tom Olmsted 785-562-6767    Rob Olmsted 785-353-2210    Jeff Sandstrom 785-562-3788

TERMS: Cash sale day. Statements take precedence. **Social distancing is encouraged and masks suggested but not required. Lunch served.** Sellers & Auctioneers not responsible for accident or theft.



# Kansas Foundation for Ag in the Classroom announces new executive director

Kansas Foundation for Agriculture in the Classroom (KFAC) announces Nancy Zenger-Beneda, Ed.S. will lead the organization in collaborating with the ag industry/community to strengthen ag literary education programming and expand the current fundraising plan. Zenger-Beneda joins the foundation with robust experience in academia encompassing strategic planning, assessment, program development, grant-writing and fundraising strategy.



the next level," says Jim Adams, KFAC chairman. "She has the experience to enable the foundation to expand our program

into secondary education classrooms." Zenger-Beneda joins KFAC after nearly 16 years at Cloud County Community College (CCCC). While at CCCC, she fulfilled a number of roles. Most recently she was the vice president for Academic Affairs. During her time at CCCC, she was instrumental in expanding agriculture programming and fundraising for a new agriculture facility. She also led the development of the solar energy program and fundraising for the solar energy farm which serves as both a learning lab

for student and provides energy for college operations. Zenger-Beneda will apply her background to KFAC in strengthening relationships, expanding ag-learning opportunities, and generating additional fundraising. "Agriculture is more exciting than ever before," Zenger-Beneda says. "The technological advancements, science and math used in today's agriculture offers a number of career opportunities that youth wouldn't be exposed to without organizations like KFAC. I'm excited to help bring resources and tools to ed-

ucators and promote the Ag industry." Zenger-Beneda is a peer reviewer for the Higher Learning Commission, an accreditor for post-secondary educational institutions in the North Central region of the United States, and teaches online graduate leadership studies for Fort Hay State University where she earned her Educational Specialist (Ed.S) degree in Educational Leadership and Administration. Not only does her professional background in academia closely coincide with KFAC's mission, she has

personal industry experience. She lives on a ranch near Belleville and has been actively involved in agriculture throughout her life. "Nancy's agricultural background combined with her professional experience will be a huge asset to KFAC," Adams says. "Our organization has been around for more than 35 years and with Nancy's help, we're certain to be here for another 35." For more information about Kansas Foundation for Agriculture in the Classroom, visit [ksagclassroom.org](http://ksagclassroom.org).

# Nominations sought for Willie's Farm Family Program at K-State Football's Celebrate Agriculture Day

The Meadowlark Extension District is seeking nominations for the first Celebrate Agriculture Day with K-State Football this fall. Their history as Kansas State Agriculture College is something they want to recognize and celebrate. The designated Celebrate

Agriculture game is November 7 against Texas Tech, and the District is seeking nominations to honor one Willie's Farm Family from each county in the District!

The Meadowlark Extension District is now taking names of families interested in attending

the November 7. They will gather all names of interested families and do a random drawing from each office in the District with the deadline to submit names at noon on Friday, June 26, 2020. Nominations will be taken in person and via the mail to the Meadowlark Extension

Distric office. Information needed: the family name of the nominee, mailing address, and email, and phone contact. Please send this information on a postcard to one of our District offices listed below.

Meadowlark Extension

District, 114 W. 5th Street, Holton KS 66463-1778; P.O. Box 326, Oskaloosa, KS 66060-0326; 1500 Community Drive, Seneca, KS 66538-2184.

The selected farm family from each coun-

ty will receive two complimentary tickets to the game with the opportunity to purchase additional discounted tickets and be recognized with all county representatives during the game.

# USDA issues first Coronavirus Food Assistance Program payments

U.S. Secretary of Agriculture Sonny Perdue recently announced the USDA Farm Service Agency (FSA) has already approved more than \$545 million in payments to producers who have applied for the Coronavirus Food Assistance Program. FSA began taking applications May 26, and the agency has received over 86,000 applications for this important relief program.

"The coronavirus has hurt America's farmers, ranchers, and producers, and these payments directed by President Trump will help this critical industry weather the current pandemic so they can continue to plant and harvest a safe, nutritious, and affordable crop for the American people," said Perdue. "We have tools and resources available to help producers understand the program and enable them to work with Farm Service Agency staff to complete applications as smoothly and efficiently as possible and get payments into the pockets of our patriotic farmers."

In the first six days of the application period, FSA has already made payments to more than 35,000 producers. Out of the gate, the top five states for CFAP payments are Illinois, Kansas, Wisconsin, Nebraska, and South Dakota. USDA has released data on application progress and program payments and will release further updates each Monday at 1:00 p.m. The report can be viewed at [farmers.gov/cfap](http://farmers.gov/cfap).

FSA will accept applications through August 28, 2020. Through CFAP, USDA is making available \$16 billion in financial assistance to producers of agricultural commodities who have suffered a five-percent-or-greater price decline due to COVID-19 and face additional significant marketing costs as a result of lower demand,

surplus production, and disruptions to shipping patterns and the orderly marketing of commodities.

In order to do this, producers will receive 80 percent of their maximum total payment upon approval of the application. The remaining portion of the payment, not to exceed the payment limit, will be paid at a later date nationwide, as funds remain available.

### Getting Help from FSA

New customers seeking one-on-one support with the CFAP application process can call 877-508-8364 to speak directly with a USDA employee ready to offer general assistance. This is a recommended first step before a producer engages the team at the FSA county office at their local USDA Service Center.

Producers can download the CFAP application and other eligibility forms from [farmers.gov/cfap](http://farmers.gov/cfap). Also, on that webpage, producers can find a payment calculator to help produc-

ers identify sales and inventory records needed to apply and calculate potential payments. Producers self-certify their records when applying for CFAP and that documentation is not submitted with the application. However, producers may be asked for their documentation to support the certification of eligible commodities, so producers should retain the information used to complete their application.

Those who use the online calculator tool will be able to print a pre-filled CFAP application, sign it, and submit it to their local FSA office either electronically or via hand delivery through an office drop box. Please contact your local office to determine the preferred delivery method for your local office. Team members at FSA county offices will be able to answer detailed questions and help producers apply quickly and efficiently through phone and online tools. Find contact infor-

mation for your local office at [farmers.gov/cfap](http://farmers.gov/cfap).

### Policy Clarifications

FSA has been working with stakeholder groups to provide further clarification to producers on the CFAP program. For example, the agency has published a matrix of common marketing contracts that impact eligibility for non-specialty crops and has provided a table that crosswalks common livestock terms to CFAP cattle categories. Updated information can be found in the frequently asked questions section of the CFAP website.

### More Information

To find the latest information on CFAP, visit [farmers.gov/cfap](http://farmers.gov/cfap) or call 877-508-8364.



### GSI

#### GRAIN BINS

ALL SIZES AVAILABLE  
Hopper Bins Available  
FINANCING AVAILABLE  
Harder AG PRODUCTS  
West Highway 50  
PEABODY, KANSAS 66866  
Phone 620-983-2158  
[www.grainbinsusa.com](http://www.grainbinsusa.com)

## REAL ESTATE AUCTION

**SATURDAY, JUNE 27, 2020**

TIME: Personal property: 9:30 am • Real Estate @ 11:30 am

AUCTION HELD ONSITE: 1407 W. 7th Street — WAMEGO, KS

**OPEN HOUSE: Sunday, JUNE 14, 2020 • 2-4 PM**

DESCRIPTION	DETAILS
	This charmer sets right in the middle of Wamego with easy access to the amenities that are offered by the great community. Inside you will find a main floor master suite, three additional bedrooms upstairs with an additional bedroom as well. For those that enjoy outside activities that may be the highlight of the property as it sets on just under a half acre lot and has THREE detached garages/shops.
<b>Call Bill or Andrew to take a look for yourself!</b>	
<b>REAL ESTATE TERMS:</b> Property sells AS IS, WHERE IS. 5% non-refundable down payment is required day of sale by check. Buyer must be able to close on or before July 27, 2020. Buyer needs bank letter of loan approval or funds verification. Cost of Owners Title Policy to be split equally between Buyer and Seller. All announcements day of sale take precedence over written materials. Crossroads Real Estate & Auction LLC is representing the Seller.	
<b>***Full Personal Property Listing in Future Ads**</b>	
Check us out on Facebook & Online for more info <a href="http://www.kscrossroads.com">www.kscrossroads.com</a> <a href="http://www.facebook.com/KScrossroadsauctions">www.facebook.com/KScrossroadsauctions</a>	
	<b>ANDREW SYLVESTER, Listing Agent/Auctioneer, 785-456-4352</b> <b>BILL DISBERGER, Auction Coordinator, 620-921-5642</b> <b>TERRI HOLLENBECK, Broker/Owner, 785-223-2947</b>

## UPCOMING AUCTION

ESTATE & CONTENTS AUCTION: SATURDAY, JUNE 20 - 10 AM  
2362 E. Mink - LINCOLN, KANSAS

REAL ESTATE: Approx. 157.6 acres. 2010 sq ft, 3 bdrm/2 bath, built 2002, full basement. CONTENTS: 2006 Chevy PU 2500 Duramax, Tools, Toolboxes, Fence Panels, Engine Hoist & much more.

FOR LATEST UPDATES & PICTURES go to website  
[www.soldbywilson.com](http://www.soldbywilson.com)

### Wilson Realty & Auction Service

PO BOX 1305, SALINA, KS 67401 • OFFICE (785) 827-5563  
LONNIE WILSON CELL (785) 826-7800  
OWNER/BROKER/AUCTIONEER

## AUCTION

**SATURDAY, JUNE 13, 2020 — 9:00 AM**

Offering for sale at Public Auction, located at 389 12th Ave., INMAN, KS from Inman, KS 4 miles east & 1/8 mile south.

**BACKHOE / LOADER, SHOP ITEMS & ANTIQUES**

1979 AC 715 Series B diesel backhoe/loader, reworked pump & injectors; Woods 6' rotary mower; motorcycle trailer; 3 pt. bale mover; 3 pt. chisel; 160 gal. water tank; buzz saw blades; drill press; Rockwell/Beaver 10" band saw; Craftsman radial arm saw; Craftsman & Makita miter saws; Miracle paint shaker; lg. wooden top, metal frame shop table; Craftsman rollaway toolboxes; bolt bins; organizers; rollaway shop carts; anvil; Victor torch; vises; metal cutting band saw; cherry picker; heater w/100# bottle; Milwaukee sawzall; DeWalt drill; battery charger; impacts; hardware; pipe wrenches; sockets; grinder; wheelbarrow; shovels; forks; port-a-power; hand tools; tap & die; adj. wrenches; bars; 220 cord; desk; shelving; ammo boxes; car ramps; jacks; shop light; wood clamps; fishing tackle; pipe; limestone rock piles; ladders; old fire hydrants; iron wheels; wooden wagon wheels; yd. edging; chicken equip.; chicken picker; stainless/butcher table; cream cans; tiller; water pump; lawn chairs; tractor parts; chicken coop; cream separator; post vise; T-posts; rendering kettles; WWII trunk & tools; old wrenches; wash tub; cowboy silhouettes; & more.

**JUNIS & VELMA SCHROEDER, SELLERS**

**VAN SCHMIDT • Auctioneer/Real Estate**  
7833 N. Spencer Road, Newton, KS 67114  
**620-367-3800 or 620-345-6879**  
[www.hillsborofreepress.com](http://www.hillsborofreepress.com)  
Schmidt Clerks & Cashiers/Lunch provided by Zoar Church  
TERMS: Cash day of sale. Statements made day of sale take precedence over advertised statements.

# HERINGTON LIVESTOCK COMMISSION CO.

## CATTLE SALE EVERY WEDNESDAY:

**11:30 AM**




### 6/3/20 SALE RESULTS

COWS & HEIFERETTES	RAMONA	STEERS
Wilsey, 1 blk 845@91.00	Ramona, 1 blk 1280@63.50	White City, 2 mix 400@139.00
Durham, 1 blk 1080@81.00	Wilsey, 1 blk 1330@62.50	Chapman, 2 blk 525@138.00
Durham, 1 blk 1040@74.50	Ramona, 1 blk 1210@61.50	Hope, 2 mix 600@136.00
Wilsey, 1 bwf 1425@68.00	Cndl Grve, 1 blk 1195@61.50	Ramona, 128 blk 893@121.00
Durham, 1 blk 1090@67.50	Herington, 1 blk 1495@61.00	Hillsboro, 2 blk 765@120.00
Woodbine, 1 blk 1410@66.50	Woodbine, 1 blk 1330@60.00	Lnclnville, 58 mix 905@116.00
Woodbine, 1 blk 1400@66.00		
Wilsey, 1 mix 1315@65.50		
Woodbine, 1 blk 1300@64.50		
Woodbine, 1 blk 1320@64.50		
Durham, 1 blk 1335@63.50		

#### BULLS

Florence, 1 Red 1875@84.00  
Cedar Point, 1 bwf 1565@82.00  
Herington, 1 blk 1330@75.00  
Marion, 1 blk 1695@68.50

#### PAIRS

Abilene, 7 blk/Rd 1470@1231.00

#### HEIFERS

Hillsboro, 2 blk 620@115.00  
Hope, 2 mix 613@113.00

#### EARLY CONSIGNMENTS FOR JUNE 10

• 60 blk str & hfrs, home raised, weaned, shots, 500-700 lbs. • 60 mostly blk str, 900 lbs


**MORE CATTLE BY SALE TIME**

### WE ARE LOOKING FOR OFFICE HELP!

Our Consignments can now be viewed after 12 Noon on Mondays by going to [www.grassandgrain.com](http://www.grassandgrain.com) & logging onto the online Subscription.

View Our Auction Live at [LMAAUCTIONS.COM](http://LMAAUCTIONS.COM)  
KFRM AM 550, Every Wed., 8:00 a.m. • Barn Phone 785-258-2205  
[www.Herington,Livestock.com](http://www.Herington,Livestock.com)

**Manager: Tracy Ediger, 785-366-6645**  
Dave Bures - 402-766-3743 • Bob Kickhafer, Cell - 785-258-4188  
Tim Wildman, 785-366-6152



**PHILLIPS INSURANCE**  
Jim Phillips - Agent  
THE RIGHT PLAN AT THE RIGHT PRICE  
Providing Options for:  
Life Insurance  
Long Term Care

**Jim Phillips with Phillips Insurance uses Grass & Grain to create awareness about his company.**

**Jim has advertised in Grass & Grain for over 25 years. Look for his weekly ad in the Women's Pages!**

**"Name recognition is important to a business. You have to have consistency with your advertising."**

**You could also be reaping the benefits of Grass & Grain advertising!**

**Don't hesitate, call today:**

**785-539-7558**

*Or stop by to talk with one of our advertising representatives:*

Since 1954

# GRASS & GRAIN

**1531 Yuma St. • Manhattan, KS**







# GRASS & GRAIN DIRECTORY

## AUCTIONEERS



**STEVE MURRAY**  
 Broker/Auctioneer  
 MURRAY  
 AUCTION & REALTY  
 Real Estate - Farm - Household  
 785-556-4354  
 murrayrealtyauction@yahoo.com  
 www.murrayauctionandrealty.com



**GAVEL ROADS**  
 ONLINE AUCTIONS  
**GAVEL ROADS**  
**IS THE PLACE TO GO**  
**TO BUY AND SELL**  
**EQUIPMENT.**  
 785.587.7737  
 www.gavelroads.com  
**READY ... SET ... SOLD!**



**BUY & SELL**  
 Ag Equipment  
 Const. Equipment  
 & Vehicles  
**1.866.608.9283**  
**purplewave.com**



**GANNON REAL ESTATE & AUCTIONS**  
 VERN GANNON, CAI  
 Broker/Auctioneer  
 Manhattan, Kansas 66502  
 785-539-2316  
 785-537-9003  
 www.gannonauctions.com  
 The Experienced Sound In Selling

Custom Manure  
 Hauling & Spreading  
 Big to Small Jobs!  
**Chore-Boyz Services**  
 913-636-1099

Blue Valley Drilling, Inc.  
 Water Well Drilling & Service  
 Family Business Over 70 Years!  
**CONTACT ERIC STRADER**  
 785-363-7353



**HOOVER TARP SALES**  
 Abilene, KS  
 Toll Free 1-800-536-2348  
 "DON'T GO TARPLESS"  
 www.hoovertarpsales.com  
**GENUINE SHUR-LOK**  
**NOTHING LESS!**  
 FAX 785-598-2282

## YOUR REAL ESTATE AUCTION TEAM!

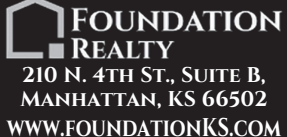
**Crossroads Real Estate & Auction LLC**  
**TERRI HOLLENBECK, Broker**  
**ANDREW SYLVESTER, Auctioneer**  
**BILL DISBERGER, Coordinator**  
**JESSICA HOLLENBECK, Office Mgr.**  
 www.kscrossroads.com  
**785.539.2732**



ARMSBID.COM  
 Kull's Old Town Station invites consignments for our Spring, Summer & Fall Auctions. If you have 1 or 1,000, we'd like to talk to you.  
 We will also buy collections or individual guns.  
 Dan@ArmsBid.com or  
**785-862-8800 • 800-466-5516**  
 Topeka, Kansas



**MORGAN RIAT**  
 REALTOR®  
 AUCTIONEER  
 SERVING YOUR AUCTION NEEDS IN NORTHEAST KANSAS  
**785-458-9259**  
 MORGAN@FOUNDATIONKS.COM  
**RANDY KUFAHL**  
 REALTOR®  
 YOUR REALTOR® FOR NORTHEAST KANSAS  
**785-556-2414**  
 RANDY@FOUNDATIONKS.COM



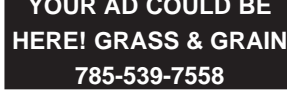
**FOUNDATION REALTY**  
 210 N. 4TH ST., SUITE B,  
 MANHATTAN, KS 66502  
 WWW.FOUNDATIONKS.COM



**GENE FRANCIS & ASSOCIATES**  
 REAL ESTATE BROKERS & AUCTIONEERS  
 Serving all 105 Kansas counties with more than 30 years of experience.  
 Offices located in Wichita, Manhattan & Anthony.  
 Call us today at 316.524.8345  
**www.genefrancis.com**  
 A bid above the rest!



**D. ROCHE FENCING INC.**  
 QUALITY BUILT FENCES  
 DON ROCHE  
**785-292-4271**  
 FRANKFORT, KS



**HALDEMAN WELL DRILLING & PUMP SERVICE**  
**WELL DRILLING COMPLETE PUMP SERVICE SOLAR PUMPS**  
 MANHATTAN, KS  
 Day or Night  
**785-539-9295**  
 YOUR AD COULD BE HERE! GRASS & GRAIN  
**785-539-7558**

## LIVESTOCK EQUIPMENT

**R&D PIPE & POST**  
 3 1/2" OD, \$2.70/ft. 4 1/2" OD, \$3.65/ft. 2 3/8" and 2 7/8" OD also available. Sucker rod 3/4"x25", \$8.25 apiece. Delivery available.  
 Wilsey, KS  
 620-767-2907

Tire water tanks. Tire ground level mineral feeders. Feeder replacement tops. **WORTH THE LOOK!!**  
**endurobrandlivestock.com**  
**785-231-8397**



Making tough jobs easier  
**Luco Mfg. Co**  
 • HYDRAULIC CHUTES  
 • WORKING CIRCLES  
 • CAKE FEEDERS  
 • CONTINUOUS FENCING  
 • PANELS & GATES  
 See us at www.lucoinc.com  
 Or call toll free:  
**1-888-816-6707**  
 PO Box 385  
 Strong City, KS 66869

## LIVESTOCK EQUIPMENT

**HOLD 'EM FENCE Company**  
 barbed wire, welded continuous fence, pipe, custom tubs, gates, alleyways. Cell 785-313-4552, http://www.holdemfence.com

## BE SMART WHEN INVESTING IN A HAY TRAILER

Do you bale 100 bales or 10,000?  
 Do your bales weigh 500 lbs. or 2500 lbs.?  
 Do you haul them 1 mile or 100 miles?  
 From one to twenty-seven bales at once, GoBob has the **RIGHT** self-unloading hay trailer for your operation.  
**855-880-7964**  
**GoBobKS.com**

## FEED & SEED

**FEYH FARM SEED CO**  
 Alma, Kansas  
 Native Grass Seed  
 Wildflowers  
 Smooth Brome Grass  
 Erosion Control Products  
 Cover Crop Seed  
**866-765-3415**  
 Nativeseed@Kansas.net  
 www.FeyhFarmSeed.com

## FEED & SEED

**LOOKING FOR SOMEONE** to make multiple semi loads of range cubes. I have some ingredients. Call Brock Baker. 316-249-1907.

**TOP QUALITY 2020 BROME** and prairie hay available. 3x4 square bales and also 5x6 net wrapped round bales. South central Kansas. Delivery available. Call anytime at 316-323-8483.

## WANTED DAMAGED GRAIN

We pay top dollar for damaged grain. Trucks and vac's available. Immediate response anywhere.  
**Pruess Elevator, Inc**  
**1-800-828-6642**

## AUTOMOTIVE

**1973 FORD 880** twin screw grain truck with 18 foot, 52 inch sides. Omaha Standard bed, 5 new tires. \$3500 OBO . 785 396-4482.



2007 IHC 7400 with new Kuhn Knight RC260  
 Several Daycabs available  
 Feed Mixers and Manure Spreaders  
 Kuhn Knight, new & used  
 Belleville, KS  
**800-536-2293**



**MIDWAY MOTORS SUPERCENTER**  
 McPherson, KS  
 Hutchinson, Kansas • Hillsboro, Kansas  
 Newton, Kansas  
 2018 Chevy 2500 HD Crew LTZ 4x4, diesel, auto, loaded, 54k mi.  
 2016 Ford F-250 Crew Lariat 4x4 diesel, auto, loaded, 50k mi.  
 2015 GMC 2500 HD Crew SLT 4x4, 6.0 gas, auto, nice, 22k mi.  
 2019 Ram 2500 Crew Big Horn 4x4, 6.4 gas, auto, nice, 22k mi.  
 2019 Ram 1500 Rebel, Crew, 4x4, 5.7 V8, loaded, nice, 15k mi.  
 2018 GMC Sierra 2500 HD, crew 4x4, SLT, diesel, loaded, 52k mi.  
**Ask for Kris Hanschu**  
**krishanschu@midwaymotors.com**  
**620-755-2824**

## REAL ESTATE

## HORIZON FARM & RANCH REALTY, LLC

1-888-825-1199  
 www.horizonfarmranch.com  
**AG LAND**  
 \* 80 Ac+/- Prime Hunting w/Tillable/CRP/Timber. SE of Chapman.  
 \* 160 Ac+/- Pasture NW of Lindsborg. Rural water and power in place. Call Ray!  
 \* 150 Ac+/- Pasture S. of Southeast Saline. Call Ray!  
 \* 80 Ac+/- Tillable N. of Conway. Class II Soils.  
 \* 80 Ac+/- Tillable at Westfall.  
 \* 160 Ac+/- Tillable at Westfall.  
**MORE LISTINGS ON OUR WEBSITE!**  
 \*Auctions \*Private Treaty Sales \*Value Assessments  
 Ray Swearingen Broker/Owner.....785.452.8498  
 Lucas Hamm .....785.366.3580 Rachelle Swearingen ..... 785.452.5115  
 Ty Bryant .....785.366.0261 Billy Randle .....785.479.1152  
 Brad Budden .....785.280.0915 Sheila VanWinkle Corn..... 785.280.3564

## REAL ESTATE

**10.1 ACRES 2-1/2 MILES** north of Wamego on Highway 99. 801-916-6161, Rick.

**38 ACRES OF PASTURE** with 40x90' metal insulated building. Building has modest living quarters, new HVAC, water meter and electric. Located in Jefferson County. 4 ponds. \$195,000. Additional adjoining acreage available. 913-620-6878

**Looking for that special place in the country – to buy or sell?**

Call **Dolly Anderson, Broker**  
**G&A Real Estate, INC.**  
**785-532-8801**  
 Manhattan, Kansas  
 dollyanderson.com

## FARM & RANCH

**Land For Sale**  
**Ottawa Co.-** 19.3 Acres m/l located on edge of Tescott. 13.77 AC crop land & balance in creek and timber. Excellent bow hunting for deer or turkey. Call Chris 493-2476  
**Ottawa Co.-** 10 Acre Building Site & 20 Acre Building Site Northwest of Bennington on blacktop. Call Chris 493-2476  
**Ottawa Co.-** 79 AC m/l. 67.62 AC Crop Land & the balance in timber & creek. Excellent habitat for deer & turkeys. Call Chris 493-2476.  
**Ottawa Co.-** 160 AC m/l with 149 AC cropland & 11 AC waterways and wildlife habitat. Call Chris 493-2476.  
**Ottawa Co.-** 78 Acres m/l, 42.4 Acres CRP balance native grass. Excellent upland game bird habitat. Chris 493-2476  
**Farm & Ranch Division Of:**



**Antrim-Piper Wenger Realtors®**  
 631 E Crawford Salina KS  
 www.cbsalina.com  
 1-800-276-3641

**New Address?**  
  
**Let us know!**  
 Contact Kevin to update your Grass & Grain subscription:  
 agpress3@agpress.com  
 785-539-7558  
 1531 Yuma St.,  
 Manhattan, KS 66502

## TRAILERS

**Elite Aluminum Stock Trailers**  
**Titan — Sharp Your Trailer Super Store!**  
**Mid-Plains Equipment**  
 E. Hwy 30 & 10, POBox 2526  
 Kearney, NE 68848  
**Delivery Available**  
**308-237-5810**  
 www.midplainonline.com

## BOB'S TRAILER SALES

**Pomona, Kansas**  
**785-418-2227**  
 www.bobstrailersales.com  
**Circle-D, Elite, Travalum, Travalong**

**B&W Hitches**  
 Turnover ball: \$595  
**Free Installation!**

- 2020 Utility 18+2, two 7K axles .....\$3,900
  - 2020 Circle D stock trailer, 20' .....\$8,500
  - 2020 Circle D 24', Full cleared floor, bull pkg, loaded .....\$11,250
  - 2020 Circle D 24' stock .....\$9,500
  - 2020 Elite 30' 10k axles gooseneck flatbed... \$8,500
  - 2020 Elite 25', 2-7k axles Gooseneck flatbed .....\$6,250
  - 2020 Elite 25' 10k axles Gooseneck flatbed .....\$7,950
  - 2020 Elite 32' 10k axles Gooseneck flatbed .....\$8,700
- All Elite flatbed trailers low profile and torque tube, dual jacks and toolbox.**

## Blue Valley Trailers



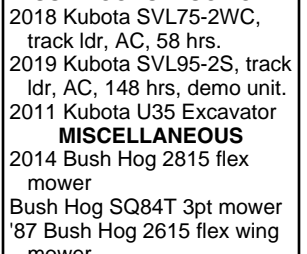
## MACHINERY

**– USED IMPLEMENTS –**  
 Gehl skid loader 5240  
 2013 Gehl V270 skid loader  
 2008 R75 Gleaner  
 2015 S78 Gleaner  
 2010 Gleaner 8200 25' w/air reel  
 2015 R190 skid loader  
 2005 Gleaner R65  
 2010 MF 2856A round baler  
 2016 R190 Gehl skid loader  
 2014 Gleaner S77 combine  
 1998 Gleaner R72  
 Gleaner 800 30' flexhead  
 Gleaner 400 30' rigid  
 Gleaner 8000 25' flex head



**Call us for your AGCO part needs!**  
**Kuhlman Impl.**  
 LINN, KANSAS  
**785-348-5547**

**NEW TRACTORS**  
 Kubota M7-152 PS, MFD, ldr. Kubota M6-111 MFD w/ldr. Kubota M5-111 MFD w/ldr.  
**USED TRACTORS**  
 1964 MF 35  
 2007 Kubota L4400 HST 4wd ldr  
 2002 JD 4310, 4WD, 72" mid mower  
**USED CONSTRUCTION**  
 2018 Kubota SVL75-2WC, track ldr, AC, 58 hrs.  
 2019 Kubota SVL95-2S, track ldr, AC, 148 hrs, demo unit.  
 2011 Kubota U35 Excavator  
**MISCELLANEOUS**  
 2014 Bush Hog 2815 flex mower  
 Bush Hog SQ84T 3pt mower  
 '87 Bush Hog 2615 flex wing mower



**McConnell Machinery**  
 1111 E. 23rd Lawrence, KS  
**785-843-2676**  
 Evenings  
**785-979-2271**  
 www.mcconnellmachineryco.com

## MACHINERY

**FETERL UNDERCAR HOPPER**, hydraulic drive, 10', 15'. \$900. 785-799-4134.

**FOR SALE: 1980 MF 750** combine with 24' header. 785-488-7242

**MF 850, 2415 HOURS**, very good front tires, hydrostat. \$4500. 620-694-9800.

**WANTED: J-STYLE** concrete fenceline bunks or forms. 785-499-4134.

**WANTED: PULL TYPE FIELD** cultivator with harrow. 785-437-6160.

**JD COMBINE, 1986 7720** Titan II, diesel, hydrostat, chopper. 3060 hours, good condition, 224 platform, pickup reel, 918 flexhead, pickup reel. \$12,000. 785-243-6859.

**Gleaner Combines**  
 '91 R62 Cummins \$22,500  
 '91 R60 RWA .....\$10,000  
 '81 M2 RWA .....\$8,500  
 (2) 825 flex heads..\$9,500  
 (3) 15' LM flex heads..Call

EZ Trail Gravity Wagons, Grain Carts, and Header Trailers.

## Great Plains Tillage Tools

**81 Farm Eq. Service**  
 McPherson, KS 620-241-3100  
**1-800-357-3101**  
 www.81farm.com

**NEW USED**  
 Rakes: VR1428

Balers: 6- 605SM, 5- 605N, 2- 605SM corn stalk, 1- 504N, 4- 605M, 1- 604M, 1- 504SI, 1- 6650 Rancher, 1- 6650 Rancher. Rakes: 1- R2800, 2- R2300, 1- VR1224  
**LARGER BALE FORKS SPRING STEEL AVAIL.**  
**METAL ROUND SQUARE TUBING ANGLE CHANNEL & FLAT**  
 2 3/8", 2 7/8", 4 1/2" pipe  
**WELDING SUPPLIES**  
 Oxygen C125 & acet. Bottles for sale  
 Welding rods & wire  
 Top & bottom belts for all balers  
 Twine 4' & 5' netwrap  
 Portable panels, Feed Bunks & Round Bale Feeders

## Vermeer Sales & Leasing

LEONARDVILLE, KS 66449  
 785-293-5583  
 785-293-2542

## USED TRACTORS

'15 Case IH Maxxum 125 MFD ldr, 975 hrs  
 '09 JD 5055E ROPS, MFD, ldr, 800 hrs.  
 '09 Case IH Magnum 215, 1575 hrs  
 '09 Case IH Magnum 215, 3450 hrs  
 '96 JD 8300 MFD 7995 hrs  
 '95 JD 8770, 4WD, 3903 hrs  
 '89 Case IH 7140 MFD  
 '79 JD 4240 QR  
 '76 IH 1086 w/loader

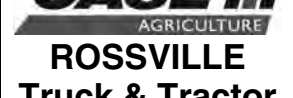
## MISCELLANEOUS

'19 Bush Hog 2215 bat wing Demo/rental  
 Case IH 900 8R30 front fold Case IH 900 planter 6R30  
 '97 Case IH 2166 2700 engine hrs, 1975 separator  
 '98 Case IH 1020 15' flex  
 '04 Case IH 2366 4WD, 4045 eng., 2995 sep.  
 '11 Case IH 7088 combine 1705 engine, 1248 sep.  
 '11 Case IH 3406 corn head w/ trailer  
 '10 Case IH 2020 flexhead 30' w/ air reel  
 '05 Case IH 1020 20'  
 '89 Case IH 1020 25'  
 '89 Case IH 1063 corn head  
 '13 EZ-Trail 510 grain cart w/ tarp  
 (2) Parker 2600 gravity wagons

'80 Vermeer 605G rd. baler  
 JD 1418 rotary cutter, 14'  
 Hesston BP25 bale processor  
 '02 NH 1475 MOCO 14'  
 (2) CIH 6500 Conser-til, 14'  
 IH 45 FC 12.5'  
 JD 980 FC 27'  
 IH 370 14' disk  
 Case IH 490 disc 25'  
 '01 Case IH 3950 disk, 33'  
 '07 Case IH 340 25' disk  
 JD 915 V ripper 7 shank  
 JD 714 disc chisel 9 shank  
 JD FBB drill 16x8  
 GB 900 Hi-master ldr  
 Speeco 3pt post hole digger  
 BMB Estate 72 finish mower  
 Land Pride HRL-3578 retractable shank box blade 6.5'

## NEW EQUIPMENT

Farmall 35C MFD loader  
 Farmall 45C MFD cab loader  
 Farmall 95A MFD cab  
 Farmall 115A MFD Cab  
 Magnum 280  
 Case IH 335 Turbo 28'  
 Case IH WR302 wheel rake  
 Case IH RB565 rd. baler  
 (2) Case IH DC133 disc mower conditioner  
 Several Bush Hog rotary mowers and tillers  
 Complete line Bush Hog zero turn mowers



**ROSSVILLE Truck & Tractor**  
 ROSSVILLE, KANSAS  
**785-584-6195**

## Grass & Grain wants YOU



**To get the best advertising for your buck!**

**Classified Liners:**  
 \$0.65 per word  
**Prepaid:** 10% discount 2-3 weeks, 25% discount 4+ weeks  
**Classified Display Ads:**  
 \$10 per column inch  
**Add logos/photos for free!**  
 No discounts for billed or display ads. Refunds not available for prepaid ads after 1st run.

**Call today!**  
**877-537-3816**

## TRAILERS

**CIRCLED LIVESTOCK & HORSE TRAILERS**  
**FLATBED TRAILERS**  
 • 1-800-526-0939 •  
 www.circle-dtrailers.com

## Trailers 4 U

**785-292-4166**  
 Frankfort, KS  
  
 www.trailers4u.com

**VISSER TRAILER SALES**  
**Retiring - Selling at cost:**  
 Use Horse Trailer  
 24' Aluminum GN stock  
 31' GN flatbed  
**Call 785-258-2800**



**DONAHUE!**  
**1-800-457-7406**  
 www.donahuetrailers.com



MACHINERY

PLANTER SALVAGE IH 800-900-950-955 Cyclo JD 494-1280, 7000-7300, plate and plateless White 5100 Koelzer Repair Onaga, KS 785-857-3257

NEW EQUIPMENT Net wrap & twine available. R2800 Basket Rake VR1022-1224 wheel rakes BPX 9010 Processor 504R Baler Winkel Calving Pen Portable Corral R2300 rake BPX 9000 Bale Processor MC 3700 Perfect Tree Saw USED EQUIPMENT 5500 Rebel Baler 665 with net 605N RC 9120 mower TM850 Mower Demo

BERG REPAIR WINKEL Calving Pen Vermeer 14200 Godlove Rd. Westmoreland, KS 785.457.3534

TRACTORS/SKID LDERS 1973 IH 966 2014 JCB205 skid loader 2004 JD 240 series II skid ldr., ROPS, 700 hrs. 1989 Case 1835C Gas engine, 1950 hrs, 59" bucket & pallet forks New JCB 3TS-8T Tele-Skid track loader New Case IH P85 power unit

HAY EQUIPMENT New H&S 5116 16 wheel High Cap rakes Vermeer 605 N rd. baler w/net 1996 Vermeer R23, twin rake

MISCELLANEOUS Hesston 2240 21ft field cultivator Gnuse L90 3pt. rear scoop Vermeer BPX 9010 bale processor 1990 Case IH 1083 corn-head Landoll 7530-29' VT Plus New Wemhoff 10' & 12'

ITEMS FOR SALE 2006 MF 6495 tractor 3,300 hrs .....\$69,000 2017 CIH 310 Magnum tractor 5102 hrs.....\$85,000 JD 4240 tractor .....\$14,500 2016 JD 6145 M tractor 2,078 hrs .....\$71,000 JD 4320 tractor w/ldr.....CALL IH 986 tractor .....\$8,500 2011 Case SV300 skid steer... CALL JD 444 cornhead .....CALL JD 608C cornhead.....\$21,000 JD 893 cornhead .....\$13,000 2005 CIH 2412 Cornhead .....\$16,500 CIH 3408 cornhead 8R30, 2 in stock.....CALL 2002 CIH 1020 flexhead air reel .....\$8,000 JD 925 flexhead .....\$6,000 1990 JD 912 pickup head.....\$5,250 Brent grain cart 1084 Avalanche 1000 bu. \$18,000 Brent Grain Cart 770.....\$8,500 E-Z trail 475 grain cart ..\$4,500 Haybuster H1130.....\$39,000 Patz V420 LP vert. mixer .....\$14,000 Roto Mix VXT 535.....\$13,000 JD 716A silage wagon ..\$7,000 2013 Case WD2303 Moco Swather rotary head 16' 1400 hrs .....COMING IN H&S HDX14 hayrake ..\$11,000 Rowe WR14 hayrake..\$14,500 2014 New Holland 560 round baler.....\$22,000 New Holland 855 round baler..\$700 2013 Farm King rake 18 wheel .....\$9,500 New Idea 353 manure spreader.....\$7,000 New Holland 195 manure spreader.....CALL JD 637 Wheatland disc 32' .....\$16,500 JD 630 disc 30' .....\$7,500 2000 JD 637 disc 25' ..\$15,000 JD 400 rotary hoe 15' .....\$9,000 JD 4600 plow .....\$5,000 Sunflower 7212 rolling harrow. ....\$4,000 Blu Jet 7 sh pull type spring trip shanks nice.....\$14,000 Blu Jet II ripper 7sh.....\$6,500

MACHINERY

1984 JD 7720 COMBINE: Third owner machine. Lots of new parts over the last eight yrs. Engine seems solid, it may use a small amount of oil during heavy use. Dual range cylinder. Long unloading auger. LED lights. Field ready. Pics can be viewed on craigslist ad or call 785-747-7625.

Vermeer New Equipment 604N Baler 605N Baler 504R Baler R2300 Twin Rake VR1224 12 Wheel Rake VR1428 14 Wheel Rake BPX9010 Bale Processor 4' & 5' Net Wrap & Twine Used Equipment 6640 Rancher Baler 504M Baler 605 Super M Baler New in 2020 Custom Inline Bale Wrapping Wertzberger Ranch Equipment LLC Alma, KS 785-765-3588

Box Scraper Patriot 37' header trailer JD 637 29' disc 2006 Case IH 1200 16 row 30 stacker planter 2008 Case IH 1200 16 row 30 stacker planter New Danuser pallet forks for skid steer 5,500 lb rating New Danuser Intimidator skid steer tree puller Icon 1632 grader rear steer

HESSTON AGCO SUNFLOWER FARMHAND SUPERIOR IMPLEMENT, INC. 402-879-4723 Evening: 402-879-3719 SUPERIOR, NEBRASKA

Blu Jet Ripper 5sh.....\$4,000 VPS Ripper 7 shank .....\$5,000 Quinstar FM-42.....CALL Sunflower 3371 V blade 33'.....\$13,000 Sunflower 3040 Fallowmaster 35' .....\$8,000 Kent Series V Field Cultivator 44' .....\$8,500 Quinstar FM21 fallowmaster ...\$5,500 22 ROW CULTIVATORS 6-8-12 RW.....IN STOCK 11 PLANTERS / SEVERAL DRILLS.....IN STOCK JD 1890 Air Drill .....CALL Sunflower 9433 no-till drill 40' ..\$23,000 2008 White 8800 planter 16R30 .....\$50,000 GP Planter YP625-12TR split row .....\$8,000 JD 7300 planter 8R36-38-40 ...\$6,000 JD 1700 planter 6R36-38-40 ...CALL 2003 White 8100 planter 8x30 .....\$13,500 Kinze planter 8R36 .....\$4,500 KMC Cultivator 4 row .....\$750 Landpride RCR3515 mower.....\$8,500 Rhino SR15M mower ..\$5,500 Industrias America 12F heavy duty box scraper .....\$2,750 Malsom belt terracer.....\$8,000 Wemco header trailer 32-42 ft. NEW.....CALL 7 ACRES OF USED FARM EQUIPMENT ON OUR LOT - CHECK US OUT

Complete listing on our web: www.jonesmachineryinc.com BUY/SELL/TRADE DAILY Smith Center, KS 785-282-3000 785-282-0432 Cell 785-686-4005 Evening Calls Welcome

JONES MACHINERY, INC.

Tumbleweed Auction Co. LLC 935 E HWY 36 Smith Center, KS 785-282-5419 www.TumbleweedAuctionKS.com Tumbleweed Auction Co. LLC is taking consignments at anytime & has joined up with Jones Machinery, Inc., with 50 years knowledge in used farm equipment. Online auctions provided by AUCTIONTIME.com with absolute & reserve option available. Call or stop by today!

MACHINERY

8820 TITAN II COMBINE, 5173 hrs., chrome bars included. \$15,000. 8820 Titan II, 5686 hrs, new bars, \$15,000. All above average, shedded. 785-823-3821.

SALVAGING COMBINES N5, N7, L, L2, M, F, G, C, CII, AII, A&E, K Gleaner. 6620, 7720, 8820, 7700, 6600, 4400, 3300, 105, 95, 55, JD. 915, 1480, 1460, 1420, 815 IHC. 860, 760, 750, 510, 410, 300 Massey. Several black & orange Gleaner corn heads.

Jack Boyle Vermillion 785-382-6848 785-564-0511

Tire Town Inc. 20 8x38 New .....\$825 340/85 R28 New .....\$485 520 70R30 Buffed .....\$700 480 70R28 Buffed .....\$500 420 85R34 Used 70% .....\$300 520/85R42 80% .....\$800 7 184x38 10P New .....\$525 600/65 R28 New .....\$1,000 9 360/70R28 Buffed .....\$325 710/75 R42 Buffed .....\$1,600 23 R30 overstock .....\$1,100 184x34 New .....\$480 800/70 R38 Buffed .....\$2,600 380/90 R46 80.00 .....\$750 800-444-7209 800-451-9864 913-441-4500 913-682-3201

SALVAGE COMBINES ALLIS N7-6, L2, L, M, G, F2, F, CII, AII; JD 8820, 7720, 7700, 6600, 4400, 3300, 105, 95, 55; MF 860, 760, 750, 510, 410; IH 1680, 1480, 1460, 915, 815, 715, 503, 403; NH TR70-85, 1400, 995, 985, 975.

SALVAGE TRACTORS ALLIS 7000-7080, 220, 210, 190XT; D17-19; JD 84-8630, 7520, 6030, 5020, 4630, 4430, 4020, 3020, 720, 730; CASE 1470, 1370, 1270, 1200, 1070, 930, 400; IH 1568, 1466, 1256, 1066, 1026, 806; FORD 4-5-6-8-9000; MF 2745, 1155, 1100, 90, 85; OLIVER 2150; MM G1000; WH2-150, 4-150.

Mike's Equipment BUHLER, KANSAS 1-800-543-2535

MACHINERY

3440 SPRA-COUCPE. 785-799-6039.

CASE IH 1020 22.5 FT. FLEX header. Fore and aft, poly skids. Call 785-428-3479.

3-POINT SPRAY BOOM with saddle tanks. 785-799-6039.

FOR SALE: GRAIN KING grain cart, 400bu. Swing auger, excellent. Always shedded. One owner. \$4000. 785-388-2385.

TRUCKLOAD SALE Brand new Industrias America header trailers for sale in Lindsborg.

20', \$2600; 30', \$3200; 35', \$3600; 40', \$3800.

Other sizes in stock. All have dolly front tires, HD trailers have front fenders, torsion axles, lights and brakes. These trailers are quality built at an affordable price. Delivery available. 785-452-5685

Used Farm Equipment Tillage • Grain Handling Loaders • and more Check website for listings

Mellenbruch Machinery Soldier, Kansas 785-834-2541 Cell: 785-305-0234 www.mellenbruchmachinery.com

John Deere 318 w/ mower, front blade & rear sprayer ... \$2,195 New Hydrabed feeder 1800 model .....\$2,650 Nice flatbed fits Dually \$2,100 Case IH 8920 MFD new rubber, sharp .....Call

CASE III AGRICULTURE WINCHELL'S, INC. Phillipsburg, KS 785-543-2118

Firestone DON'S TIRE & SUPPLY IF 800/70R38 FST RAD DT..... \$3,664 480/80R 42 FST RAD DT ..... \$1,472 VF 380/90R 46 FST RAD RC..... \$1,910 460/85R38 Performer EVO ..... \$876 Prices and Product availability are subject to change without notice. TOLL FREE 866-888-7838 www.donstire.net ABILENE, KS

SHUCK IMPLEMENT IN STOCK- NEW MASSEY FERGUSON HESSTON 2900 SERIES 2018 Dodge Ram 2500 pick up bed, single axle, black, nearly new .....\$2,200 2014 MF 1745 round baler gathering wheels, electric tie, bale ramp, 14x16.1 tires, starting roll scraper upggrade. Stk#7442 .....\$13,900 2014 MF 2946 1,600 bales, auto mesh & twine, C1000 monitor, 21.5L-16.1 tires with suspension axle, bale ramp, fire extinguisher. Stk#5950 .....\$27,900 2013 MF WR9770/9195, 1,355 eng. hrs, wide susp., cab w/ high speed transport, very clean well maintained shedded machine, system 150 auto guide MF 9195 rotary disc razor bar head, 16' wide.. Stk#7440/8094 .....\$87,500 trimble 750 auto guide, receiver, monitor, steering wheel & harnesses etc. ....\$5,000 JCB bucket for JCB Telehandler 1987 6' wide model #500 series, Ser#547 36600 0.9M(3) ..\$2,500 2013 White 8222 No-Till planter, 12 row 30" flex frame fold, liquid fert., 3 BU hoppers, SM400SE monitor, Pneumatic down pressure, point row shut-off 6 rows. Stk#1100 .....\$38,900 1976 JD 336 small square baler, twine tie, clean, sitting in shed since 2004. Selling for an Estate. Stk#7976 consigned .....\$4,400 2017 MF 2270XD 31,500 bales single axle, solid Windguard w/ roller, moisture sensor kit, roller bale chute with bale weight scales, C1000 monitor. Stk#5128. Promotional Financing .....\$89,900 1999 JD 6410 cab PFA tractor, 4,090 hrs., 12F/4R trans., 4 remote valves, Bush Hog M646 ldr. w/bale spear & bucket w/ grapple. Grapple cylinders are broken. ldr. joystick needs attention. Stk#5171 consigned..\$38,500 1980 JD 2440 w/JD 145 ldr., 1 rear remote, 6,562 hrs., selling for an estate. Stk#3765 consigned .....\$8,900 2014 MF 5611 w/ MF 941 ldr. 415 hrs, like new, very nice clean tractor. Air seat, 540/540E/1000 PTO, AM/FM/ WB digital stereo. 84" material bucket w/ Euro Quick Attach bale spear - Euro Attach MF/ Quicke 72556073M Stk#3094. Stk#2505/2506 .....\$64,900 2019 Sunflower 6631-29 VT tool. 14" Hydraulic rolling basket finisher. Stk#6926 .....\$10,000 New - In Stock 2019 Grouser AG 240i Dozer Blade. 4-way blade w/ Box End Plate Kit. Incl. FH-400 NH/Buhler Versatile Genesis Mount. Only used partial season, pushed around 3,500 tons. Stk#7612 .....\$24,900 2015 MF 1734E, approx. 200 hrs.,4WD, 9x3 trans., w/ Grill Guard, eng. block heater, R1 Ag Tires front 7-16 / Rear 11.2x24. Stk#3588 .....\$12,900 Woods PHD65 post hole digger w/o bits. Includes 9" HD double flight auger (\$200 individually). Stk#7447 .....\$900 2002 Hesston 845 round baler, twine tie, wide pickup, Hyd. kicker, stk#7443. Promotional Financing .....\$6,900 2008 MF ZT29 Zero Turn, very clean, 60" Hyd. lift deck, 425 eng. hrs., 3 cyl. diesel, bull in deck lift jack for changing blades. Stk#1635 consigned... Reduced \$6,850 2008 Gravely 152Z Zero turn lawnmower Kohler 23Hp, 52" deck kept inside 425 hrs, stk#5767 .....\$4,400 NH 616 rotary disc mower, very clean, kept serviced, 7'-8" swath. Stk#5301 consigned...\$5,900 1983 JD 530 round baler w/ JD Bale-Trak monitor. Stk#7287. Promotional Financing .....\$4,800 2011 MF 8200-25 flex head, new SCH sickle, guards good, kept shedded. Stk#1943 Set up for Gleaner, can fit MF ..... REDUCED \$18,900 Lawrence, KS 785-843-8093 800-654-5191 Fax: 785-843-1014 AGCO MASSEY FERGUSON

MACHINERY

Guaranteed Used Truck Tires, most sizes. GeeTire.com Rossville, KS. 785-231-8397

Case & IH Tractor Salvage Case 300's thru 2096 IH 460's thru 5488 Over 1000 Tractors on shelf New & Rebuilt parts for all brands of tractors/ combines

Want to buy Case & IH salvage tractors

Elmer's Repair CENTRALIA, KS 785-857-3248 www.elmersrepair.com

Vermeer NEW • ZR5 self propelled • 604-605N net • R2300 & R2800 rakes • TM800 Trail Mower • VR-8, 10, 12 wheel rake USED EQUIPMENT • 604N • TM800 Trail mower • MC1030 MOCO • MC840 • 605M net ramp floats FEED MIXERS • FA-430 Feed wagon To view all of our New & Used Equipment, please check out our website: www.sloophook.com or give us a call: 785-828-4706

Sloop Sales & Hook's Repair Inc. Lyndon, KS 66451

CLAAS USED FORAGE HARVESTERS & HEADS '19 CLAAS 980.....\$450,000 (6) '17 CLAAS 980 .....FR. \$325,000 '15 CLAAS 960.....\$220,000 '15 CLAAS 970.....\$200,000 '14 CLAAS 980.....\$225,000 Great selection of CLAAS Orbis 750 corn heads starting at \$20,000

TRACTORS '20 CLAAS Axion 940....NEW '19 Massey Ferguson 7726 .....NEW

COMBINES '14 Gleaner S67.....\$155,000 '11 Gleaner S77 .....\$10,000 No Trade Special '09 Gleaner R66.....\$95,000 '97 Gleaner R62.....\$25,000 '97 Gleaner R72.....\$35,000 '96 Gleaner R72.....\$39,500 (3) '20 Gleaner S97 .....NEW '19 Gleaner 3312.....NEW (2) '13 Gleaner 3000 \$25,000 '10 Gleaner 7200 30'...\$7,500 '82 Gleaner 24'.....\$2,500

MISCELLANEOUS '14 Baker 1000.....\$7,500 '13 John Deere 690 ..\$60,000 '12 John Deere 692 ..\$55,000 '08 John Deere 640B .....\$10,000 '06 MacDon 963.....\$17,500 '96 John Deere 455 35' .....\$21,500 '92 John Deere 853A ..\$9,500

KALVESTA IMPLEMENT Kalvesta Impl. Company, Inc. 620-855-3567 KALVESTA, KS 67856 www.kickalvesta.com

BUILDINGS / BLDG MTLs.

SMITH POSTYARD Hedge Post Delivery Available JEFF SMITH 620-496-8956

Metal Panels & Accessories

THE VALUE LEADER. WE WON'T BE UNDERSOLD CALL FOR CURRENT METAL PRICING • DELIVERY AVAILABLE • WESTERN METAL Best Service Louisburg, Kansas 1-800-489-4100

DIAMOND L SUPPLY Dwight, KS • 1.888.608.7913 • 29 ga 40yr ptd..... \$69.89/sq 26 ga 40yr ptd..... \$86.36/sq 29 ga Galvalume...\$55.68/sq \*Metal Roofing & Siding\*

Complete Bldg. Packages Doors, Insulation, Livestock Equipment, Scales, Waters, Bale Beds & Cake Feeders \*Jobsite Delivery Available\* (prices subject to change) www.diamondlsupply.com

EMPLOYMENT

ATTENTION CDL DRIVERS: Openings now available with Salina-based company. Grain, box van or reefer. Benefits, competitive wages, per diem. Home most weekends. Call 785-476-5076.

General Technician Pottawatomie County Public Works, Westmoreland, KS Starting Rate: \$14.60-\$18.25/hr, full-time; plus excellent benefits Responsibilities: Manual labor and operation of equipment in the daily maintenance and construction of roads and bridges. Assists with various different crews, dependent on daily operations. Performs snow and ice removal during inclement weather. Requirements: High School diploma or equivalent required; graduation from a vocational school desired. One to three years of similar or related experience preferred. Combination of training and experience that provides the required knowledge, ability, and skill considered.

Special Requirements: Must have (or be able to obtain within 60 days of employment), and maintain a valid Class A Commercial Driver's License (CDL); must have and maintain a clean driving record. Closing Date: Open until filled TO APPLY: Visit www.ksgovjobs.com For more information: 785-457-3455 or humanresources@pottawatomie.org Pottawatomie County is an EOE.

IVERSON FEEDLOT Cleaning: 4 truck mounted manure spreaders, payloaders, and skidsteer. We also have 7 side dumps for stockpiling, dirt/gravel hauling, snow removal, etc. We travel anywhere. Contact 701-391-9649.

SERVICES

CUSTOM PORTABLE DISC-ROLLING DARRELL WAGONER Cell: 785-650-4094

HARVESTING

CUSTOM HAYING ALFALFA, brome, prairie hay. Manhattan to Council Grove areas. Call 785-410-3472

WANTED

HARVEY COUNTY AREA lent 3 years ago by Kenneth J. Griffith. Silver box orange frame silage dump wagon. 620-837-5601

WANT TO BUY SALVAGE and non-running ATV's, snowmobiles, jet skis, and dirt bikes. Any condition, cash paid, will pick up. 402-469-2002.

WANTED: J-STYLE concrete fenceline banks or forms. 785-499-4134.

Don't Get Sideways With Your Advertising Dollars! Remember GRASS & GRAIN for All Your Advertising Needs



# Kansas Profile

By Ron Wilson  
Executive Director of  
the Huck Boyd Institute



## Rick McNary, Shop Kansas Farms

A Kansas man was almost overwhelmed by a flood. But it wasn't a flood of water, it was a flood of interest – specifically, an interest in finding local foods. Now that interest is helping build connections that are benefitting farmers and consumers across the state.

Rick McNary is a writer, photographer, global hunger expert and founder of a remarkable new Facebook group known as Shop Kansas Farms. For 20 years, he served as a pastor of a church in Potwin. After going on a mission trip and interacting with starving people in Nicaragua, he organized a humanitarian food relief organization. Today, he is still involved in such efforts through The Outreach Program, a non-profit that organizes food packaging events across the country.

Rick has published three books. Many of his articles have been published in Kansas Farm Bureau's *Kansas Living* magazine.

Then the coronavirus hit. "One night I was sitting in my recliner, talking to my wife Christine," Rick said. "We had just had a delicious supper of beef

which we had gotten from our friends Gregg and Katie Carothers in Harper County, but Christine told me that she had been to the store and the meat counter was empty."

That meant there was a disconnect between the people raising beef and the consumers who were looking for it in the store. Rick wondered if social media might provide a way to connect local producers and consumers.

"I didn't know much about Facebook groups but I thought I would give it a try," Rick said. He created a group called Shop Kansas Farms on Facebook. That night he checked on the group and was startled to see how

many people had already joined.

"Oh my," he said. "Then I checked the next morning, and it was, 'Holy cow!'" The interest in the group took off.

"I felt like a little kid who was walking along a dam and saw a strange object, which happened to be a plug, and pulled on it, unleashing a pent-up flood of water behind it," Rick wrote. In four weeks, the Shop Kansas Farms Facebook group went from zero to more than 130,000 members.

Many producers were posting about their products, and many consumers were asking about them. Products included vegetables, beef, pork, cheese, honey, lavender and more. "I'm so thankful that some friends stepped in as administrators and moderators to help manage the group," Rick said. These included social media expert Olivia Fletcher, Meagan Cramer of Kansas Farm Bureau, Kansas Department of Agriculture staff and others.

"It's a crazy idea that has taken off," Rick said. Interest is so great that

a Shop Kansas Farms website is being created so that people can search specifically for producers in their region.

"We want to help farmers prosper," Rick said. "When a farmer tells me that he thought they were going to have to fold, and now they're making money, that's meaningful. This is creating new opportunities and people are becoming friends of farmers again."

The project is making a difference. It's quite an accomplishment for someone from the rural community of Potwin, population 449 people. Now, that's rural.

After the first three weeks, Rick posted his

thoughts about this phenomenon, including the following observations:

"A local and regional community is being built around agriculture. Consumers are learning real-time about how agriculture works...Rural revitalization is taking place. People want to buy local. In the previous food chain, the average calorie traveled 1,500 miles to reach our plates. Now, people are purchasing food from as close as their next-door neighbor. This is a movement. Already, these types of "Shop Our State Farms" are springing up around America as people follow this model. I believe this movement will continue long after the COVID-19

crisis." It was a flood – a flood of interest in local foods. Rick McNary is now gratified by the results. He wrote about those who have helped with the Facebook group: "They have channeled the tumultuous waters into a life-giving river that is providing education, connection, commerce, behavior standards, new friendships, and most of all, hope."

Audio and text files of Kansas Profiles are available at <http://www.kansasprofile.com>. For more information about the Huck Boyd Institute, interested persons can visit <http://www.huckboydinstitute.org>.

**GRASS & GRAIN**

# YOUR AUCTION SOURCE

**Never miss a sale! Subscribe today!**  
Toll Free: 877-537-3816

## Marysville Livestock Sales

**Every Thursday at 12 Noon**

**Bill Keesecker, Manager • 785-562-1015**  
1180 US Hwy. 77, P. O. Box 67, Marysville, KS 66508

PLEASE VISIT OUR WEB SITE TO SEE OUR LATEST DETAILED MARKET REPORTS AND UPCOMING CONSIGNMENTS AND SPECIAL SALES: [www.marysvillivelivestock.com](http://www.marysvillivelivestock.com)

STEERS/BULLS		BEEF		HEIFERS		FIELDMEN	
300-400#	\$190.00-\$171.00	300-400#	\$167.00-\$129.00	300-400#	\$150.00-\$124.00	Jim Dalinghaus	Dave Bures, Auctioneer
400-500#	\$170.00-\$149.00	400-500#	\$150.00-\$124.00	400-500#	\$140.00-\$122.00	785-799-5643	402-239-9717
500-600#	\$160.00-\$141.00	500-600#	\$140.00-\$122.00	500-600#	\$131.00-\$118.00	Baileyville, KS	Odell, Nebraska
600-700#	\$145.00-\$128.00	600-700#	\$131.00-\$118.00	600-700#	\$120.00-\$111.00		Hanover, KS
700-800#	\$133.00-\$127.00	700-800#	\$120.00-\$111.00	700-800#	\$119.00-\$108.00		Waterville, KS
800-900#	\$127.00-\$120.00	800-900#	\$119.00-\$108.00				
900-1,000#	\$125.00-\$106.00						

**Market Report for 6-4-2020.**  
**350 HEAD SOLD**

**HFRETTES:**  
1010-810# \$109.50-\$100.00

**COWS-HIGH YIELDING**  
1910#-1090# \$79.00-\$62.00

**COWS-LGT WT & LOW YIELDING**  
1290#-850# \$60.00-\$36.00

**BULLS:**  
2055#-1000# \$88.00-\$74.00

Trevor Lundberg	Taylor Schotte
785-770-2271	785-268-0430
Frankfort, KS	Marysville, KS

**Barn Phone • 785-562-1015** [www.marysvillivelivestock.com](http://www.marysvillivelivestock.com)

## LONNIE WILSON'S CONSIGNMENT AUCTION

**SATURDAY, JUNE 13, 2020 — 10:00 AM**  
601 South Broadway, SALINA, KANSAS

**Guns will sell at noon - Accepting consignments until Thursday, June 11th, 2020**  
Sellers include: Great Plains, Land Pride, G.P. Trucking, Circle W Cattle Co., El Dorado, Advanced Auto, DS&O and others.

**MOTORHOMES, CAMPERS:** 2000 Vacationer by Holiday Rambler 36' w/Triton V10 gas motor, 1 slide out. **ONLY 32,174 miles** \* 1990 26' Hitchhiker II 5th Wheel Camper w/ 1 slide out.  
**STORAGE CONTAINERS:** 20' Conex storage box like new with matted floor.  
**BUILDINGS:** **NEW Curvco Model P 30'X62' with 12' center** \* 2 HD all steel 8'X10' railroad storage buildings.

**SEMI TRACTORS, TRUCKS, TRAILERS:** 2008 48 ft. Aluminum/Steel Combo Spread axle Flatbed Trailer \* Travelons 35 ft overall Stock Trailer w/front compartment Extra Nice \* 2 axle fiberglass tool box \* 27 ft overall Travelong stock trailer \* 5th wheel plate \* 16 ft Utility Trailer \* American 14 ft Enclosed trailer.  
**SKID STEER ATTACHMENTS, FORKLIFTS:** 2007 International 7400 DT466 (DS&O) 47 ft reach digger truck 108,600 miles, w/ M50-plus pitman utility boom, w/ remote control \* Clark Electrical Forklift w/ hard rubber, side shift and charger \* Crown Electric Standup Forklift 55S w/side shift \* Toyota Electric pallet jack \* New Kubota BX2750D Snow blower \* New Kubota B2782A Snow Blower \* Rhino skid loader N30 post hole digger \* 2 Tree pullers \* 6 Weldable quick attach plates \* 2 receiver hitch's \* 4 sets of pallet for extensions \* 80" brush hog \* 72" brush hog \* 66" 75" 80" & 85" Rock buckets \* 66" 75" 80" & 85" Rock & brush Grapple \* 7 New pallet forks for skid loader.

**TRACTORS, FARM EQUIPMENT, IMPLEMENTS:** Elcher 364NC Tractor w/ roll bar & canopy \* International 1086 Tractor 140 HP dual PTO, Dual Hydraulics, w/ suitcase weights & tractor weights, landpride RCF 3010 Rotary mower \* HD Double Diamond Predator brush hog \* 3 pt. Arena Vator II Spring tooth Grater Groomer \* Land Pride 3pt Sb2584 snow blower \* SPF 3 pt. Flail mower \* 72" 3 pt. spring tooth grater groomer AG1572 \* Great Plains Bat wing mower RCM16515 \* Land Pride 3 pt. RCP3060 Parallel Arm cutter \* New John Deere CX-15 bat wing mower \* Cosmo 3pt hyd concrete mixer \* Cattle Panels \* Squeeze Shoot (head catcher) for cattle \* Feed Bunks \* 500 Gallon Propane Tank \* Continuous Fencing panels \* Command mod# GS5 5ft grading scraper.

**CARS, PICKUPS:** 1973 Cadillac ElDorado \* 2010 Chevy Equinox \* 1982 Jeep CJ7 w/wench \* 1975 Ford F700 Dump Truck 62,000 miles, 4speed with 2 speed, w/ hoist, 16 ft bed grain box, and tarp.

**BATTERIES, TIRES RIMS, SEATS PARTS, MOTORS:** Great Plains New Implement and mower tires \* Lights \* Bricks \* Poro Lighting \* Scaffolding \* El Dorado Bus seats \* Truck bed \* Hydraulic hoses \* Hydraulic Cylinders \* MTO shafts \* Vinyl flooring \* 2 Pallets of (El Dorado) new Batteries \* 2 Pallets Elastic Adhesive Tubes (El Dorado) \* Large High Quality Heater Hose on rolls \* Air Hose \* 2 pallets of mud flaps for G. p> Trucking \* 20 HP Baldor electric motor w/ air pump \* Several pallets ( approx. .76) of 3.25 HP and 5 HP new motors \* Gear reduction units \* 19 New 56" new hyd. 2000 psi cylinder (mod 250jt) \* Myers Ejecto water pump \* 2 Deep well water pumps.

**AMMO CANS:** Approx. 100 50 cal ammo cans \* Approx. 180 120 mm Tank Ammo storage cans.

**MOWERS, YARD EQUIPMENT:** Spartan XTF-61 GT Trac mower with 37.9 hours extra nice \* Ariens ST270 Snow blower \* Gravely 260 Zero turn mower Good condition \* Grasshopper Zero turn mower w/52' Deck \* Pro Ride 260 Commercial mower \* Toro Z master Diesel Commercial mower w/ 60" deck and 2243 hrs.

**GUNS & HUNTING EQUIPMENT:** Hatfield mod. SGL 410 3" chamber vent single shot shotgun rib ser # 410516-101871 \* Mossberg mod. 395T 12 ga bolt action shotgun 28" full choke bbl no magazine ser # 854811 \* JC Higgins mod. 583-3 20 ga 2-3/4" chamber bolt action shotgun full choke bbl ser # N/A \* Shandong 1st Machine Works mod. YL12-1J4 12 ga pump shotgun ser # 0312461 \* Mauser/Samco - Spain mod M98 (1916) 308 WIN cal bolt action rifle w/sling ser # OT-7233 \* Wards Western Field mod. Pump 22 S-L-LR cal pump rifle ser # 126014K \* Enfield mod. MK III 303 British cal bolt action rifle no magazine ser # 32611 \* Traditions mod. Crockett 32 cal black powder octagon bbl \* Elgin Arms Co mod. S.S. 12 ga single shot shotgun ser # D4178 Raven Arms mod. MP-25 25 ACP cal semi auto pistol nickel ser # 1696186 \* Davis Industries mod. P-380 380 ACP cal semi auto pistol ser # AP354735 \* SCCY Industries mod. CPX-1 9mm cal semi auto pistol ser # 124768 \* Hawes Firearm Co. mod. Western Six Shooter 22 LR cal revolver ser # 87415 \* Jennings Firearms mod. J-22 22 LR cal semi auto pistol nickel w/extra mag ser # 305597 \* Hopkins & Allen mod. Safety Police 38 S&W cal. revolver ser # F1347 \* Remington mod. Mohawk 22 LR cal nylon 66 semi auto rifle ser # 2234223 \* Volunteer Enterprises Inc mod. Commando Mark 45 ACP cal semi auto rifle ser # 60657 \* Remington Wingmaster mod. 870 20 ga 2-3/4" chamber pump shotgun Imp Cyl bbl ser # S083144X \* Mossberg by CBC mod. 715T 22 LR cal semi auto rifle ser # EMD3737902 \* Marlin mod. XT-22 22 LR cal bolt action rifle ser # MM568330 \* FIE mod. SB 12 ga single shot shotgun camo ser # C1285516 \* Rossi mod. M4122B 22 LR bbl & 410 bbl ser # SP608913 \* Mossberg mod. 500AB 12 ga pump shotgun ser # G024882 \* Stevens mod. 67 Series E 20 ga 2-3/4" & 3" shells pump shotgun ser # E431866 \* Glenfield by Marlin mod. 60 22 LR only semi auto rifle ser # 23543579 \* New Haven mod. 283TB 410 3" chamber bolt action shotgun ser # N/A \* High Standard mod. Field Classic 12 ga semi auto shotgun vent rib ser # 3122377 \* Iver Johnson mod. Champion 12 ga single shot shotgun ser # 30602B \* Remington mod. 788 22-250 REM cal bolt action rifle no magazine ser # A6128660 \* Remington mod. Sportsman 48 12 ga 2-3/4" chamber semi auto shotgun full choke bbl ser # 3079997 \* Savage Arms 30 - Series C 20 ga 3" chamber pump shotgun series B bbl vent rib ser # 805559 \* ERA made in Brazil 20 ga single shot shotgun ser # 523577 \* Remington mod. 1100 12 ga semi auto shotgun vent rib ser # L624804M \* Glenfield by Marlin mod. 60 22 LR only semi auto rifle ser # 26251297 \* Marlin mod. 55 12 ga 3" Magnum chamber bolt action shotgun The Original Marlin Goose Gun w/sling ser # 70262835 \* Henry Repeating Arms mod. H0025 22 LR cal semi auto rifle US Survival - Silver ser # US53756 \* Unknown Make Mod. Diamond Special 12 ga Single Shot shotgun (faulty latch, has to be taken apart to open breach) ser # 225813 \* Lots of Tree Stands.

**INDUSTRIAL & CONSTRUCTION EQUIPMENT:** John Deere 410-J Backhoe w/only 2693 hrs. on the meter, extend a hoe, 4 wheel drive, and quick detach bucket \* 2007 Sky Jack Dual fuel PSI 4 cyl 42 in. ext. hyd. Outriggers 41 ft. SJ 8841 \* 9000 lb.4x4 Dynalift D4P 90 Telehandler with like new foam filled tires \* Semi tarps from G.P. trucking \* Salina Vortex Anver Vac Lift 900 lb mod. (M90M6) \* Haeger Syntrol Bolt Organizer \* 36' Belt Sander w/extra belts & dust collector \* Triumph NTC-910 Tyre Changer \* Hunter wheel balancers \* Advanced Avenger 2810D floor scraper \* Harris hydraulic power unit w/ hydraulic cylinder \* L510 30 HP Sul Air compressor w/Refrigerated Ultra Air Dryer.

**BUILDING SUPPLIES:** Several 100 ft of 8" diameter 24-25 & 36-38 ft. long gas line pipe in good condition \* Gazebo Roof \* Fencing \* 7 6x10 ft dog run panels \* Approx. 15,000 sq. ft Metal roof sheets \* Skylights \* Several pallets of Pallet Rack cross members \* 40 ft steel light or flag pole.

**TOOLS:** 10" Radial Arm Saw \* 10" Craftsman table saw \* HD Band Saw \* Approx. 20 wire and stick welders from G.P. (Miller and Lincoln) \* CP 50 TX w/22 5 wire feeder \* Screw Jaws \* Stick saw \* M2K Sprayer \* 36 Boxes of clipped stripped nails \* Rigid rolling and collapsible tile saw \* Porter Cable sander \* Spindle sander \* Ryobi Planer \* Craftsman 2700 psi Power washer \* 2 HP Craftsman joint planer \* 20 HP Electric Blower.

**MISCELLANEOUS:** Booths \* Tables \* 3 Door Cooler \* Salad Bar \* Ice O Matic Ice machine \* Galaxy Deep Freeze \* Kenmore gas stove \* Dell home computer \* Schwinn Elliptical Machine \* Base Hit pitching machine \* Fiberglass Basketball goal \* Vintage Bingo machine with cards, balls, slot holder \* Sports Cards \* Loveseat \* Chairs desks shelves \* Coffee table \* Bookshelves \* Emerald tile \* Kitchen cabinets \* Silverware \* Bunkbed \* 48 slot rolling gun rack \* 5 Rolling Library ladder with rails for hardware store.

**AND MUCH, MUCH MORE NOT LISTED! There is a 10% Buyer's Premium on this sale.**

**Wilson Realty & Auction Service**

For Latest Update & Pictures go to website:  
[www.soldbywilson.com](http://www.soldbywilson.com)

Any announcement made the day of sale takes precedence over any printed matter.  
NO CONCESSIONS will be available the day of the sale.

BO. BOX 1905, SALINA, KS 67401 • (785) 827-3563  
LONNIE WILSON - OWNER/BROKER/AUCTIONEER • (785) 826-7800  
DAVE HUNT - SALES MANAGER • (785) 291-5257  
CAROLYN HUTCHINS - OFFICE MANAGER • (785) 823-1177

Website & Contact Email Addresses: [www.soldbywilson.com](http://www.soldbywilson.com)

## SPRING CONSIGNMENT AUCTION

**SATURDAY, JUNE 20, 2020 — 9:00 AM**  
Location: Holton Livestock Exchange, Inc. 1/2 mile East of HOLTON, KS on K-16 Hwy  
We will be running Two Rings Starting at 9:00 AM!

**TRACTORS & ACCESSORIES**  
2012 JD 6115D FWA, cab/H&A, LH reverser, tier 3 eng, 118hp, 250 one owner hrs, never rained on, ser# 1P06115DLB4022157; 2004 Kubota B7610HSD-F 4WD tractor/LA352FL loader, 3 pt. finish mower, BL60C 3 pt. Roto tiller, foam filled tires, 450 hrs, less than 3 hrs. on complete engine overhaul by Heinen Repair; 1993 Belarus 825 4WD/ cab, Wvestendorf TA26 loader, bucket, forks, brush crusher, 80 hp, 1694 hrs; 1969 JI Case 730, WF, 3 pt., PTO, runs good; (7) IHC wheel weights; IH wide front end, fits 460, 560, 656, 706, 756, 806; MF #38 loader/trip bucket, fits MF 35 & 65; mid-60s small backhoe/tractor, 4 cyl. gas

**TRUCKS, TRAILERS & ACCESSORIES**  
2001 Chev. Topkick/22' flat tilt bed, 3126 Cat, 6 sp; 2012 PJ 20' deck/5' dovetail GN flatbed, 3 fold over ramps; set of 6 Ford 6-bolt 22.5 wheels; HD 12' truck flatbed; 2005 Titan 7X24' stock trailer; Transcraft 48' flatbed trailer; PU utility bed fuel trailer/fuel pumps; bumper hitch 16' stock trailer; 1997 Lufkin 48' step deck trailer; 1993 Ford L8000 grain truck/18' bed; 1979 Chev. C70; 30' GN flatbed trailer, triple axle, single wheel; 1992 Freightliner/sleeper, 60 series Detroit 11.1 litre, 10 sp, Jake brake, wet kit, good rubber, 860,000 mi.; 2000 MCM 38' dual hopper bottom, steel, good rubber, bows & tarp; 2015 Volvo VNL630 road tractor, 455 hp Volvo, Hi Shift trans, air ride; (3) 10:00R20 tires on dayton rims, 2 are steers; (4) H1 Hummer tires & wheels; B&W custom flatbed/ GN hitch, off 2006 1T Dodge dually.

**COMBINES & HEADS**  
1989 Gleaner R50, 4W assist, has all updates plus R52, ser# 50-01852H8787; Gleaner 20' grain flex deck, ser# 2046453F, ex. cond., overhaul 2 yrs ago; Gleaner R50 6-30 black corn head.

**VEHICLES & CAMPERS**  
1989 Ford F250 4x4, sgl cab, 4sp/OD, 5.0 gas, PW&L, GN ball, tool box, red & silver; 2004 PU bed/tailgate & bumper, white; 2006 Ford Freestyle 228,362 mi.; 2004 Chev. Malibu, 4D, runs good, 250k mi.; 2004 Chev. Malibu, 4D, needs starter; 1997 Ford F250 4x4, 5.8 gas, AT, new tires, 215k mi, runs strong; 1983 Chev. Hvy 1/2T, 2WD, less than 5000 mi on new 3500, 77,350 mi.; 2005 Mercury Marquis, 4D, 57,700 mi, shedded, slick car; 1990 Hitchhiker 29' camper; 2006 Ford F250 XLT 4x4 crew cab, 6.0 powerstroke, 165k mi; 2001 Dodge Ram 2500 quad cab, 2WD, 5.9 Cummins, 350k mi, runs good; 1999 Dodge 3500 4x4 dsl flatbed, AT, new injectors & rebuilt trans. 10K miles; 2004 Chev. 2500 HD 4x4 Silverado crew cab; 1986 Toyota 4x4, reg. cab, short bed, Chev. 3500 eng.; 2T truck flatbed, 8'x18' steel deck; 2004 Dodge 3/4T 4x4/Krogman bale bed, 5.7 Hemi, AT, newer motor, trans. & transfer case; 2005 GMC Canyon 4x4, 3.5L, good tires, 191,350 mi, 4WD possibly not working; 1986 Chev. Scottsdale 3/4T PU, AT, 350, 2WD, red; 2000 Chev. Suburban 1/2 4x4, 5.3 Vortec.

**CONSTRUCTION EQUIPMENT**  
4000 gal. above ground fuel storage tank, small leak in seam.

**LAWN & GARDEN**  
2009 JD X540 garden tractor/ grass catcher, 52", 335 hrs, ser#5400050229; Walker ZT mower, 48" deck/rear bagger, additional 62" side discharge deck; Troy-bilt model 47282 chipper/ vac; Poulan Pro gas leaf blower; Commercial walk behind fertilizer spreader; Outdoor furniture building setup, including jigs, templates, fixtures, instructions. Designed & formally built by Merlin Wing, Mayetta, KS; Swisher 60" tow behind mower/gas engine; Cub Cadet ZT mower, 50" deck; Cub Cadet 524 SWE snow blower, never started; soaker hose, misc. garden items; Craftsman front tire tiller, 13, 22 & 24" tilling widths 208cc, good.

**ATV'S & ATTACHMENTS**  
2004 Polaris ranger 500 4x4, 2 new tires, new starter & fuel pump 2 yrs ago, 1406 hrs; Honda Fourtrax 300; ATV snow plow.

**HAY & HAY EQUIPMENT**  
NH 499 14' hydra swing swather, 10 acres on new guards & sections, always shedded; hay wagner/New Holland 12T running gears, holds 8 bales, pulls good; Case IH 8830 14' SP Windrower, good shape, AC has leak in line; IHC dump rake/book; (2) 3 Pt bale carriers; NH 258 hay rake/dolly wheel; NH 260 hay rake; IH 1300 3 pt. 9' sickle bar mower, good; NH 850 chain baler/elec. tie; sickle bar mower for Farmall C; NH 166 windrow inverter; NH 450 7' sickle bar mower; JD 1800 14' hydra-swing swather, rebuilt pump, always shedded, one owner; Vermeer WR22 10 wheel rake; 8'x12' hay trailer; H&S 12 wheel hay rake; Ford 3 pt. sickle bar mower; Rousch 9' sickle bar mower; Hesston 310 SP swather, 8' head; 16' 4 wheel flatbed trailer; IHC 430 square baler; Case IH 35 side delivery rake; NH 499 hydra-swing 12' swather; Farmland 10 bales accumulator & bale fork.

**LIVESTOCK & FENCING EQUIP.**  
4 calf hutches; hedge posts; 20 rolls red brand 48" woven wire, new; (200) 6' T posts, new; misc. hog panels; oval stock tank; wooden manure spreader; JD 14T sq. baler; 6 Earth mover silage tires; (10) 20' 6 bar continuous cattle panels; Mira-fount 2 hole waterer; JD 350 manure spreader, 540 pto, new hoses, poly floor, rear gate, 10.00x20, good shape; 40' port. feed bunk; 4 mineral feeders; (3) 10' feed bunks; 6' oval metal stock tank; 6' round plastic tank; 6' 150 gal. oval plastic stock tank; 4' oval plastic stock tank; 3-8' bale rings; calf table; Green port. creep feeder/gates; single roll hog oilier; double roll hog oilier; 14 wire cattle panels; 11 wire hog panels; 10 wire comb. panels; 2- bar 6 cake feeders; HD sq. pipe big bale feeder, new; Davis feed box.

**MACHINERY**  
Heinzman 7945 Traveler irrigation gun/hose; Black machine model 12-30 rigid & flex planter, Kinze units & liquid fertilizer; Rhino 11.5' flex wing finish mower, foam filled tires, trail type, owners manual; Parker 2000 gravity flow wagon/ tarp & hyd auger; Schoon 300 gal. sprayer/14' booms, pull type; Case 3 pt 3-14 plow; IHC 3-14 pull plow; IHC P.O. 2-14 Pull plow; Oliver 1-18 pull plow; JD 730 lister/ book; Cosmo 500 seeder; RHS pickup slide in sprayer/hyd drive; 300 gal. sprayer/15' booms, needs some work;

gas powered spot sprayer; JD 9' wheel disc; IH 1100 9' sickle bar mower; 2 row 3 pt. lister/plant-er; 5' 3 pt. rotary mower; JD 12' wheel disc; IH 4x16 steerable plow; JD 9 shank chisel/harrow attachment; IH Cyclo 900 8x30' row planter/liquid fertilizer & row cleaners; IHC 24' spike tooth harrow; Kuker 250 bu. gravity wagon/side auger, HD running gears; Frontier Model 72 3 pt. brush cutter; older Brillion 10' seeder; Parker 450 bu. grain cart/roller/tarp; Great plains Model CPH 1593-35 no-till drill, 10" spacing, excellent cond.; 6' 3 pt. blade; Dearborn manure spreader; PTO grass seeder; 3 pt. Carry-all; 3 pt. boom hoist; 3 pt. cultivator; 3 pt. 2 row lister; pull type chisel; 3 pt. 2 row curler; JD 750 no-till 15' drill, dry fert. & small seed box; JD 6' shredder, pull type; Agri 72" 3 pt. shredder; 3 pt. 7' shredder; JD B 16 hole drill; AC 3 bottom plow; 3 pt. 2 bottom plow; 2-3 Pt. 6' disc; 3 pt. quick hitch; IH 2 pt. hitch; 2 pt. bale carrier; Dempster 3 pt. 2 row potato digger; 4T fertilizer spreader; Kewanee 18' wing disc; BMB 8' hd 3 pt. blade; 10' pickup slide in stock racks; 2- 3 pt. 6' blades; 3 pt. post hole digger; hand corn sheller/elec. motor; Maytag wringer washer; PU tool box; several pick handles; pitch forks, shovel, spades.

**SKID LOADERS & ATTACH.**  
Timberline tree shear, less than 100 hrs; unused Lowe hyd auger 750 w/12' w/skid steer quick attach; unused Stout brush grapple 66-9 w/skid steer quick attach; unused Stout brush grapple HD72-4 close-tine w/ skid steer quick attach; unused Stout brush grapple XHD 84-6 w/skid steer quick attach; unused Stout rock bucket grapple HD72-3 w/skid steer quick attach; unused Stout tree & post puller w/skid steer quick attach; unused Stout full-back pallet forks 48" w/skid steer quick attach.

**SHOP & MISCELLANEOUS**  
Shop built wood burning stove/ blower & heat exchanger; Miller Econo twin arc welder/leads; Emerson arc welder/leads; (2) Skil worm drive saws; (2) Central paint guns; Brinks paint gun; B&D belt sander; Craftsman sander-polisher; Wizard 1/2" drill; Milwaukee hammer drill; Milwaukee sawz-all; 100# Anvil & stand; B&D 8" arm saw; Rockwell 10" table saw; Senco air nailer/ nails; Delta miter saw; Craftsman belt sander & belts; 5" vise/stand; 3/4 impact socket w/58"-2 1/4"; 3/4" air impact wrench; 3/8" & 1/2" air drills; air chisel/ bits; 3/8" air ratchet; lg. amount of body tools; Craftsman router; HD pickup ramps; 4" winches & straps; 2" ratchet straps; 1" drive torque wrench; log chain; Hyundai 3" trash pump/gas motor, new; Hyundai gas air compressor; 40-50 gal. Diamond plate fuel tank; 8- 220V shop lights; 110 gal. H shaped dual compartment fuel tank; Maytag wringer washer; hand corn sheller; Leeson 10 hp single phase electric motor, new capacitors; B&W companion 5th wheel hitch/ slider plates; 4 hp Honda powered 2" water pump/3 16" hoses, 2 intake, 1 discharge; 120/15V elec. motor for compressor; Banjo valves; asst. hyd hoses; Powermate 750 watt generator; Clipper No. 27 seed cleaner; several loads of tools & misc.

All items sold As Is Where Is, with buyers relying on their own inspection. All consignments listed are subject to change. With the delay we experienced, please watch our website for additions & deletions continuing until auction time. For PICTURES, visit our website:

**Holtonlivestock.com**  
HARRIS AUCTION SERVICE, HOLTON, KS  
Dan Harris, Auctioneer 785-364-7137 • Cody Askren, Auctioneer 785-364-7249  
Craig Wischropp, Auctioneer 785-547-5419 • Randy Pryor, Auctioneer 712-644-7610  
Holton Livestock Exchange, Inc. 785-364-4114  
Clerk & Cashiers: Jennifer Ingels, Cara Robinson, Cindy Grollmes, Kallie Bagby, Blake Harris,



Page 20 Grass & Grain, June 9, 2020

# Marshall, Craig introduce

The ongoing coronavirus pandemic has had devastating impacts on livestock owners across the U.S. On Thursday, U.S. Congressman Roger Marshall, M.D. and Congresswoman Angie Craig of Minnesota introduced The PASTURE (Pandemic Authority Suitable To Utilize Reserve Easements) Act, bipartisan legislation amending the Food Security Act of 1985 to allow for grazing on Conservation Reserve Program (CRP) land during the pandemic. The bill would give the USDA secretary more tools to assist livestock owners during times of extreme crisis.

"Kansas livestock owners were among the first to feel

# The PASTURE Act to support livestock producers

the impacts of COVID-19 and they continue to face hurdles as a result of the virus's impact on all segments of the industry," said Marshall. "I am honored to work with Craig and Senators Thune and Smith on this much-needed legislative fix that will provide another opportunity for relief for our ranchers back home. I will continue to do everything I can to help our farm and ranch families overcome the devastating impacts of the coronavirus so they can continue to produce the highest quality, safest, and most affordable food, fiber, and fuel in the world."

"Our farmers have been hit particularly hard by the economic impacts of COVID-19," said Rep. Craig. "I'm

proud to partner with Rep. Marshall and Senators Smith and Thune on a bipartisan solution to the affordable forage shortage Minnesota farmers may be facing this year. By adding pandemics to CRP emergency flexibility, we are modernizing conservation policy to address the complex emergencies facing our farmers and ranchers. I will always support bipartisan, common sense solutions to help our family farmers and livestock producers in their times of need."

Senators John Thune of South Dakota and Tina Smith of Minnesota and have introduced companion legislation in the U.S. Senate.

# Kansas wheat farmers discuss current crop conditions

Wheat farmer board members of the Kansas Association of Wheat Growers and Kansas Wheat Commission held board meetings recently via conference call. They discussed current crop conditions throughout the state.

With high temperatures in the mid-90s and strong winds, the wheat crop is maturing quickly.

John Hildebrand, who farms in south central Kansas in Stafford County, reported that the wheat looks pretty good in his area. It made it through the freeze okay, and looks better than last year. He said the stands are more consistent, and it is ripen-

ing up fast. Harvest will likely begin in the area in the next week to ten days.

Scott Van Allen of Clearwater estimates that harvest is ten days to two weeks away. He said, "With 90 degree temps, some fields have really turned the last few days." One issue he's seen in the area is an increased amount of cheat (weeds) in the fields, even in fields that have been rotated efficiently.

Martin Kerschen of Garden Plain also noted the amount of cheat in the fields. He said the wheat is turning and looks good.

"We are looking forward to harvest," he said.

Farther west in south-

west Kansas, Jason Ochs of Syracuse said that they have received one to two inches of rain over the past two weeks, which has helped wheat in the area hang on. With no moisture in the forecast and 100-degree temperatures and wind, wheat is turning very quickly. He said some wheat in the area has been destroyed and the remaining looks tough. He estimated that harvest would begin about June 20-23, possibly sooner if the temperature stays high.

Kyler Millershaski, from Lakin, said their wheat looks "surprisingly average" at this point, but conditions will continue to deteriorate with last week's high temperatures. With extremely dry conditions throughout the growing season, he reported that they've missed out on the rains, but also

missed out on freeze damage. He is hopeful that the drought conditions will result in higher than average protein levels in the area. With the recent high temperatures and strong winds, the wheat is suffering from continued lack of moisture and maturing quickly.

Nearby, Rick Horton of Leoti says it has been an interesting year and that will continue through the rest of the growing season.

"We've never seen it go from this stage with no rain to finish it with these temperatures," he said. "It will be interesting to watch the newer varieties finish." While the freeze did thin down some of the wheat, that may make it last longer with the high temperatures last week. "If it would rain, the wheat could do okay," he said.

Ron Suppes of Dighton

in west central Kansas said, "Researchers need to be complimented on the genetics we have now." He said the wheat is holding up to the drought conditions much better than it would have 20 years ago. As far as the beginning of harvest, he said, "If we catch a shower, we'll be at the 20th of June, but some may go quicker."

In northwest Kansas near Norton, Chris Tanner reports that planting date and sporadic rains have led to variable conditions. Some of the wheat headed out at only 8" tall, while some is waist-high. Acres in the area are down, and after some terrific yields last year, they are looking at a slightly below average crop. It started heading last week, but there is no rain in sight. The last moisture they received was two inches of snow on May 11.

looked bad in the fall, but looks good now. He said there's plenty of moisture, and it's almost too wet. Harvest will begin in the latter part of June.

Jay Armstrong of Muscotah says they've had too much water in the area, but survived the freeze okay. He is seeing smaller wheat heads with fewer kernels, but estimates yields will be in the 40s and 50s.

In central Kansas, Ken Wood from Chapman said the wheat in his area also looks a little better than it did a couple weeks ago. They received seven to ten inches of rain over Memorial weekend, stating that they have "gobs of moisture" in the area. The wheat is variable, but overall, it looks to be an average or better than average crop.

Justin Knopf, who farms near Gypsum in central Kansas, agreed.

"A lot has changed in the last two weeks," he said. "The rain we've had and the cooler temperatures have been ideal and have helped to maintain yield potential." He said they did lose primary tillers during the freeze, but the biggest concern in the area is stripe rust. It has caused a lot of damage to untreated fields. He estimates that 50-60% of acres in the area were treated with a fungicide.

Derek Sawyer of McPherson reports that his wheat looks really good, but you don't have to go very far west for conditions to deteriorate. Some spots are starting to show up where it was too wet a couple of weeks ago. He said the wheat is just starting to turn color, and with high temperatures and wind, it is progressing quickly.

Doug Keesling of Chase reports that wheat in his area varies in maturity from just starting to head a few days ago to turning color. He says this year is "not going to be anything spectacular."

## REAL ESTATE & PERSONAL PROPERTY AUCTION

**SATURDAY, JUNE 13, 2020 — 10:30 AM**  
704 Willett in BURLINGTON, KANSAS  
(Food onsite by Kanned Classics Country Cooking)

REAL ESTATE: Spacious 2,723 sq. ft. 2 bedroom, 2 bath home built in 1988 on large corner lot offered at 1 PM. CALL Darwin W. Kurtz, broker & auctioneer representing the seller for viewing, terms & more information.

Partial listing which includes: High quality Cherry wood furniture (lg dining set w/8 chairs, hutch, end tables, coffee table, lg chest & linen chest); like new Stainless steel Maytag Ref. w/btm freezer; older Maytag washer & dryer; Kimball French Provincial Baby Grand piano; 12 place setting Lenox Penbrook china; hand painted Nippon water set; 12 unusual Bavarian Rosenthal handpainted glass trinket boxes; other nice glassware; old quilts; costume jewelry; other collectibles; lots of plated silver & serving ware; nice bedroom groups; modern rolltop desk; Nice living room & family room furniture; lots of kitchen items; lots of good misc. household items.

Many years ago, the Jones' moved to Burlington, started Jones Funeral Home here and raised their family. This auction represents the QUALITY items they purchased over the years and everything is VERY CLEAN and has had the best of care.

**GLENDIA K. JONES ESTATE**  
Brad L. Jones, Executor

Complete sale bill, terms & lots of pictures: [www.kansasauctions.net/kurtz](http://www.kansasauctions.net/kurtz)

**KURTZ AUCTION & REALTY SERVICE**  
Darwin W. Kurtz, Broker & Auctioneer  
785-448-4152  
Exclusive agents representing sellers.

Laverne Yoder, Assistant Auctioneer for personal property only

## FLINT HILLS CHASE COUNTY HOMES & ACREAGES

**647 MIDDLE CREEK RD, ELMDALE, KS:** This beautiful Limestone home built in 1891 sits on 43+/- acres with quality cropland, timber and Middle Creek. You will enjoy the charm from yesterday with 5 bedrooms, 5 baths and 3,357 sq. ft. and the modern conveniences from all the updates and a recently added master living area. This property is immaculate! Other improvements include a Limestone smokehouse, 30'x60' Morton Building, and a 24'x48' Morton open front building. **Listed at \$549,000.00**

**1594 T RD, COTTONWOOD FALLS, KS:** Located just 5 miles from Cottonwood Falls, this beautiful 5 bedroom, 3.5 bath home was built in 2011 offers 1,740 sq. ft. on the main floor plus a full finished walk out basement and attached two car garage. The 19.4+/- acres has beautiful views of the Flint Hills to the south plus a roping arena and a 5 stall open horse barn with tack room. **Listed at \$429,000.00**

Visit: [GriffinRealEstateAuction.com](http://GriffinRealEstateAuction.com) for virtual tours, photos & videos

HEIDI MAGGARD Broker 620-794-8813  
CHUCK MAGGARD Sales/Auctioneer 620-794-8824

Griffin Real Estate & Auction  
Office: 305 Broadway, Cottonwood Falls, KS 66845  
Phone: 620-273-6421  
Fax: 620-273-6425  
Toll-Free: 866-273-6421  
[www.GriffinRealEstateAuction.com](http://www.GriffinRealEstateAuction.com)  
[griffinrealestateauction@gmail.com](mailto:griffinrealestateauction@gmail.com)

# Your Cattle Need Key Breeder Mineral

with Availa 4 from Zinpro. Availa 4 provides key essential trace minerals zinc, copper, manganese, & cobalt. Providing beef cattle a more available form of these minerals can increase reproductive efficiency & conception rates.




**FEED KEY FEEDS**

Fourth & Pomeroy Associates, Inc.  
Joseph Ebert, VP

**CALL KEY FEEDS TODAY**  
**1-800-432-7423** OFFICE  
Clay Center, Kansas 67432  
Byron Thoreson • 785-630-0161  
Rod Bohn, GM • 785-630-0846

MINNEAPOLIS LOCATION: James Carr • 785-630-0491  
TIPTON LOCATION: Tim Wiles • 785-630-1049



**grassandgrain.com**

## EMPORIA LIVESTOCK SALE CO.


Bonded & Insured

SALE EVERY WEDNESDAY IN EMPORIA, KANSAS AT 11:00 AM  
620-342-2425 or 800-835-7803 toll-free • Fax: 620-342-7741

**Date: 6/3/20.**  
**Total head count: 680**  
**COWS: \$52-\$71.00; light test**  
**BULLS: \$87.50-\$97.50**

STEERS	HEIFERS
2 bwf.....375@153.00	7 blk.....370@145.50
7 mix.....408@159.00	7 bkfwf.....464@132.00
2 bkbrf.....475@143.00	38 blk.....598@127.00
2 blk.....493@142.00	3 mix.....562@100.00
10 blk.....644@144.00	2 blk.....610@125.50
5 mix.....637@138.00	115 bkbfw.....665@124.75
2 blk.....648@135.00	9 mix.....681@123.00
16 mix.....697@130.00	12 blk.....714@124.00
15 blk.....792@133.50	158 mix.....767@120.50
6 blk.....782@118.00	5 mix.....764@117.00
68 mix.....827@126.00	50 Char.....973@114.50
6 blk.....805@124.00	11 blk.....918@107.50
56 mix.....916@117.75	8 mix.....946@100.00
12 mix.....952@113.00	

**THERE WILL BE NO SALE JULY 1 DUE TO HARVEST**



THANK YOU FOR ALL OF YOUR CONTINUED SUPPORT!  
YOUR BUSINESS IS ALWAYS APPRECIATED!

For Cattle Appraisals Call:  
BRODY PEAK, 620-343-5107 GLENN UNRUH, 620-341-0607  
LYLE WILLIAMS, Field Representative, 785-229-5457  
WIBW 580 - 6:45 A.M. Thurs; KVOE 1400 - 6:30-6:45 A.M. Thurs. & Fri.  
To see more consignments go to: [emporialivestock.com](http://emporialivestock.com)

## JC LIVESTOCK SALES INC.

Wednesday Sale, Hogs NOON • Cattle 12:30 PM

**No sale held June 3<sup>rd</sup> due to Summer schedule.**  
**Next sale June 10<sup>th</sup>.**

### CONSIGNMENTS FOR JUNE 10:

50 feeder pigs.....50-70 lbs.....	C. Richards
17 fat hogs.....280-300 lbs.....	D. Bisenthal
171 blk X str & hrs.....775-900 lbs.....	D. Banahan
60 blk X str.....700-900 lbs.....	J. Woods
61 blk X str.....725-750 lbs.....	R. Kohman
60 blk X str.....875-925 lbs.....	G. Swartz
60 blk X str.....800-850 lbs.....	G. & R. Foltz
60 blk X hrs.....700-750 lbs.....	G. & R. Foltz
60 Ang X WF str.....900-1,000 lbs.....	Oleen Brothers

**PLUS MORE BY SALE DAY!**

### UPCOMING SALE SCHEDULE:

June 10<sup>th</sup> - Cattle & Hog Sale  
June 24<sup>th</sup> - Cattle & Hog Sale  
July 8<sup>th</sup> - Back to Regular Sale Schedule

**PLEASE CHECK SUMMER SALE SCHEDULE AS POSTED!**

Watch online with [cattleusa.com](http://cattleusa.com)  
(Tab J.C. Livestock Sales) Must register to bid.

If you need assistance in marketing your cattle please call & we will be happy to discuss it with you.

## CLAY CENTER LIVESTOCK SALES INC.

Cattle sales Tuesday, 11:00 AM.

### Report from June 2, 2020

STEERS	6	465	144.50
5	515	168.50	8 603 135.25
5	454	168.00	
11	442	164.00	
11	562	157.00	TOP BUTCHER COW: \$74.00 @ 1,685 LBS.
6	637	145.00	
4	646	141.50	TOP BUTCHER BULL: \$94.00 @ 2,155 LBS.
10	700	134.00	
3	835	118.00	BRED COWS: \$725-\$1,160
HEIFERS			PAIRS: \$850-\$1,275
3	385	150.00	
26	464	146.50	

**NO SALE JUNE 9<sup>TH</sup>**  
**NEXT SALE JUNE 16<sup>TH</sup>**

### UPCOMING SALE SCHEDULE:

June 16<sup>th</sup> - Cattle Sale  
June 20-21<sup>st</sup> - Alternative Animal Sale  
June 30<sup>th</sup> - Cattle Sale  
July 7<sup>th</sup> - Back to Reg. Cattle Sales!  
July 11<sup>th</sup> - Sheep & Goat Sale!!!

**PLEASE CHECK SUMMER SALE SCHEDULE AS POSTED!**

JUNCTION CITY, KANSAS • Barn Phone 785-238-1471  
Seth Lauer 785-949-2285, Abilene

**KARL LANGVARDT** Cell: 785-499-2945  
**MITCH LANGVARDT** Cell: 785-761-5814  
**LYNN LANGVARDT** Cell: 785-761-5813

Clay Center, Ks • Barn Phone 785-632-5566  
Clay Center Field Representatives:  
Tom Koch, 785-243-5124 Lance Lagasse, 785-262-1185

Radio Market Reports KFRM 650 Tues. & Wed. 8:00 am

Radio Market Reports KCLY-Fm 100.9 Tues. 6:45 a.m.



# Beef markets move past disruptions

By Derrell Peel, Oklahoma State University

Barring a major setback, it appears that beef markets are moving past the worst of the disruptions that caused upheaval in recent weeks. Beef markets were thrown into turmoil in March as food service markets were sharply curtailed and beef demand focused on retail grocery. This caused bottlenecks in supply chains and an initial wave of disruptions in product flows.

Beginning in early April, COVID-19 began to impact work forces in many packing plants causing plant closures and reduced slaughter rates. Cattle slaughter and beef production decreased on a year-over-year basis for four consecutive weeks. The low point occurred the last week of April when total cattle slaughter was down 34.8 percent year-over-year.

Beef production that same week was down 33.8 percent compared to the same week one year ago. Significant recovery has occurred from that low with estimated cattle slaughter the week ending May 30 down 10.9 percent year-over-year. With cattle carcass weights increasing sharply due to delays in

marketing fed cattle, estimated beef production last week was down just 7.6 percent year-over-year.

Choice boxed beef prices increased beginning in late March until late May. After averaging under \$210/cwt. early in the year, Choice boxed beef prices increased in late March, dropped briefly in early April, before increasing to a peak at \$459.04/cwt. in mid-May. Choice boxed beef prices dropped to a weekly level of \$374.04/cwt. at the end of May.

Individual beef products have been on a wide variety of dynamic paths through all the turmoil in both demand and supply since March. Prices for beef products dependent on food service demand, including many middle meat cuts, dropped in March before general shortages of products pushed prices higher in April and May. Choice wholesale beef tenderloin (IMPS 189A), for example, dropped from an average price just under \$970/cwt. early in 2020, to a weekly low of \$533.33/cwt. in early April before increasing to a mid-May peak of \$1238.88/cwt. Choice tenderloin prices have decreased to \$1219.68/cwt. by the end of May.

Many end meats from the Chuck and Round, saw increased demand beginning in March continuing through April and pushed even higher by decreased beef supplies to mid-May. For example, the price of Chuck Rolls (IMPS 116A) increased weekly, beginning in mid-March from a pre-COVID-19 average near \$266/cwt., to a peak in early May of \$628.94/cwt. before dropping back to \$466.03/cwt. by the end of May. Several products in the round displayed similar price patterns since mid-March.

The last few weeks have revealed much about the nature of specialized beef supply chains and much about the variable demands for the wide variety of beef products. It has also revealed how market prices adjust to wild swings in beef product demand and supply conditions. Additional dynamics are expected as food service continues a slow recovery and macroeconomic conditions continue to affect beef demand, but hopefully beef product markets are settling back into a much more stable situation and with typical product price relationships re-established.

# MU beef researchers find improved pregnancy rates with new synch protocol

A new estrus synchronization protocol evaluated at the University of Missouri greatly improves heat response and pregnancy rates to fixed-time AI in beef cows.

MU Extension beef reproduction specialist Jordan Thomas says results from a recent large field trial found 82% of cows come into heat before the timed AI service using the protocol 7 & 7 Synch. This compares to 64% of cows in heat using the standard 7-Day CO-Synch + CIDR. Cows that come in heat before timed AI generally achieve higher pregnancy rates. "Pregnancy rates with this new protocol are exceptional," says Thomas.

Over the past two years, graduate students Rachael Bonacker and Carson Andersen in the Thomas lab worked extensively in developing and evaluating the protocol. Andersen led the large timed-AI field trial, with research results across two states, five operations, 11 cow herds and more than 1,500 cows.

Pregnancy rates vary depending on whether conventional or sex-sorted semen was used, but pregnancy rates were improved with both semen types using the 7 & 7 Synch protocol.

Using a single fixed-time AI service, 72% of cows on 7 & 7 Synch became pregnant to timed AI using conventional semen. When sex-sorted semen was used, pregnancy rates to timed AI dropped to 52% after 7 & 7 Synch. "The pregnancy rate was lower with sex-sorted semen, but still quite good," says Thomas.

This compares to preg-

nancy rates after the standard 7-Day CO-Synch + CIDR protocol of 61% with conventional and 44% with sex-sorted semen.

"These levels of improvement, regardless of the semen type used, are very exciting," says Thomas. "With the consistency of the results we have seen and the early reports from producers using this protocol, we are very comfortable with this as a new recommendation for broader use."

The 7 & 7 Synch method improves ovarian follicular maturity before the administration of gonadotropin-releasing hormone (GnRH) typically given at the beginning of an estrous cycle control program. This new protocol accomplishes that by treatment with prostaglandin F2a and an intravaginal progesterone insert (CIDR) in advance of GnRH. This enhances the uniformity of cows' response to the protocol, thereby improving overall control of the estrous cycle compared to standard 7-Day CO-Synch + CIDR protocol.

Before Andersen's large field trial evaluating this protocol on producer herds, a more mechanistic experiment led by Rachel Bonacker provided rationale for the treatment schedule.

Other members of the team included graduate students Katy Stoecklein, Cameron Locke, Jaclyn Ketchum and Emma Knickmeyer, as well as MU Extension dairy veterinarian Scott Poock. Extension livestock specialists Zac Erwin, Jenna Monnig, Andy McCorkill and Eldon Cole also played key roles on producer locations and

at the MU Southwest Research Center.

Bonacker presented her work in 2019 the American Society of Animal Science annual meeting and the Applied Reproductive Strategies in Beef Cattle conference. Andersen's results have been accepted for presentation in abstract form at the International Congress on Animal Reproduction next year in Bologna, Italy. Bonacker also led a large field trial evaluating the new 7 & 7 Synch protocol among recipient beef cows in an embryo transfer program, also with improved results. That abstract also was accepted for presentation at the meeting in Bologna.

"We are just really excited to share a new protocol that can benefit producers across the country," says Andersen. "Nothing is more rewarding than seeing research that can increase profitability and productivity get implemented on the farm."

The Thomas lab works to improve the profitability and sustainability of beef cattle production systems through extension, education and applied research. For more information, contact Thomas at ThomasJor@missouri.edu or connect with the Thomas lab's "Mizzou Repro" pages on social media.

# Depopulation and meat shortages: answering the tough questions

While many Americans fired up their grills this Memorial Day weekend, some may have found limits on meat purchases, near-empty meat cases or no fresh meat at all at their local grocery stores. At the same time, they see headlines about pork and poultry farmers having to euthanize entire barns of animals. Such a confusing contradiction presents an opportunity for agriculture to engage with consumers on the complexities of the food chain and the emotional toll this current situation is taking on farmers, according to Terry Fleck, executive director of The Center for Food Integrity (CFI).

"The contrast consumers are seeing between the meat case and what's happening on farms illustrates the unfortunate effects of the pandemic on a complex food system," said Fleck. "It's confusing to those on the outside and causing concern and mistrust. That's why engaging consumers on how meat gets to our tables and explaining the unfortunate necessity of depopulating animals is critical."

CFI recently created an animated infographic in partnership with the Iowa Farm Bureau and Illinois Farm Bureau. "Pork, Beef, Chicken: Journey to Your Plate," featured on the website BestFoodFacts.org, details the intricacies of the meat supply chain. Also on the site, "COVID-19 and the Food Supply: Your Questions Answered" addresses questions about the supply chain and food safety.

"These resources help explain a complex supply chain and why the pandemic has wreaked havoc," said Fleck.

The U.S. has 835 federally inspected livestock plants for beef and pork and nearly 3,000 federally inspected poultry plants. The system can adjust when one or two plants close. However, the impacts from COVID-19 have affected the entire system at unprecedented levels, resulting in temporary shutdowns or reduced operating capacity at many meat and poultry processing plants.

This massive bottleneck has left millions of market-ready pigs and chickens with nowhere to go. Normally, processing plants harvest an average of 500,000 pigs and 24 million chickens per day. As the number of pigs and chickens unable to go to market grows day after day, so too do the animals. They literally outgrow the space that is designed specifically for their comfort and well-being.

That has resulted in farmers faced with the heart-wrenching decision to euthanize animals that should have gone to market.

For the farmers who've committed their lives to the responsible care of animals, putting down healthy animals is devastating, said Fleck. "They dedicate their lives to raising animals to provide food for families in the U.S. and around the world. Depopulating herds and flocks is an unimaginable action that's done only as a last resort. Failing to depopulate would mean millions of animals kept in conditions that jeopardize their well-being."

Helping consumers understand the supply chain disruption and impacts may seem daunting, but the key is to keep it simple and engage on the shared values of safe food and a commitment to the highest standards of animal care.

"Talk about how challenging these times are in a reality that can't be changed," said Fleck. "That those in the food supply chain are working diligently to keep food on store shelves while keeping employees and the public safe, and how farmers - like others around the world - are in crisis and faced with incredibly difficult decisions."

Depopulation is the last resort, but being transparent about the realities of assuring animal wellbeing may bring a new perspective to consumers and help earn their trust, said Fleck.

# NASS reports on Northern Plains farm labor

In the Northern Plains region (Kansas, Nebraska, North Dakota, and South Dakota) there were 42,000 workers hired directly by farm operators on farms and ranches during the week of April 12-18, 2020, up 40 percent from the April 2019 reference week, according to USDA's National Agricultural Statistics Service. Workers numbered 35,000 during the week of January 12-18, 2020, up 40 percent from the January 2019 reference week.

Farm operators paid their hired workers an average wage of \$15.93 per hour during the April 2020 reference week, up 2 percent from the April 2019 reference week. Field workers received an average of \$15.89 per hour, down 24 cents. Livestock workers earned \$14.59 per hour compared with \$13.42 a year earlier. The field and livestock worker combined wage rate, at \$15.20, was up 60 cents from the April 2019 reference week. Hired laborers worked an average of 41.5 hours during the April 2020 reference week, compared with 42.9 hours worked during the April 2019 reference week. Farm operators in the Northern Plains region

paid their hired workers an average wage of \$16.41 per hour during the January 2020 reference week, up 4 percent from the January 2019 reference week. Field workers received an average of \$16.83 per hour, up 19 cents. Livestock workers earned \$14.63 per hour, up 121 cents. The field and livestock worker combined wage rate, at \$15.55, was up 85 cents from the January 2019 reference week. Hired labor-

ers worked an average of 40.9 hours during the January 2020 reference week, compared with 42.9 hours worked during the January 2019 reference week.

Access the national publication for this release at: <https://usda.library.cornell.edu/concern/publications/x920fw89s>. Find agricultural statistics for your county, state, and the nation at [www.nass.usda.gov](http://www.nass.usda.gov)

**Holton Livestock Exchange, Inc.**  
1/2 mile East of Holton, KS on 16 Highway  
**Livestock Auction every Tuesday at 12 NOON**  
\*\*\*\* STARTING TIME: 12:00 NOON \*\*\*\*

MARKET REPORT FOR TUESDAY, JUNE 2, 2020  
RECEIPTS: 781 CATTLE  
FOR FULL RESULTS, VISIT OUR WEBSITE:  
[WWW.HOLTONLIVESTOCK.COM](http://WWW.HOLTONLIVESTOCK.COM)

STEERS		7 hols str	777@87.00
3 blk bulls	285@190.00	3 hols str	930@84.00
2 red blk str	310@185.00	HEIFERS	
4 blk str	353@179.00	1 char hfr	210@170.00
9 red blk str	412@176.00	11 red blk hfrs	375@166.50
5 mix bulls	335@171.00	4 blk hfrs	316@161.00
5 blk str	455@170.50	5 blk hfrs	436@159.00
10 blk str	510@164.00	3 red blk hfrs	456@156.00
11 blk red str	560@150.25	6 blk hfrs	492@150.00
6 blk bwf str	591@146.50	5 blk red hfrs	432@149.00
5 blk str	622@146.00	8 blk bwf hfrs	479@149.00
14 mix str	756@140.00	4 blk hfrs	505@142.00
5 blk str	677@136.00	10 wht park hfrs	347@140.00
12 blk bwf str	775@132.25	4 blk hfrs	636@130.00
5 blk bwf str	777@130.00	8 blk hfrs	646@127.00
5 blk str	865@123.00	9 blk red hfrs	725@122.50
10 blk bwf str	976@109.00	15 blk bwf hfrs	785@118.00

**SPRING CONSIGNMENT AUCTION: SATURDAY, JUNE 20, 9 AM!**  
Please keep checking our website for additions & deletions

Dan Harris, Auctioneer & Owner • 785-364-7137  
Danny Deters, Corning, Auct. & Field Rep. • 785-868-2591  
Dick Coppinger, Winchester, Field Rep. • 913-774-2415  
Steve Aeschliman, Sabetha, Field Rep. • 785-284-2417  
Larry Matzke, Wheaton, Field Rep. • 785-268-0225  
Craig Wischropp, Horton, Field Rep. • 785-547-5419  
Barn Phone • 785-364-4114  
**WEBSITE: [www.holtonlivestock.com](http://www.holtonlivestock.com)**  
EMAIL: dan@holtonlivestock.com

View our auctions live at [Imauctions.com](http://Imauctions.com)

**VALENTINE LIVESTOCK AUCTION CO. Valentine, Neb.**  
THURSDAY, JUNE 25, 2020  
**Special Fall Bred Female Sale**  
Expecting 1000-1500 hd for our big annual event.  
Several notable consignors including Paxton Rn w/ 145 rd ang (3-5 yrs) bred red ang, (home raised). Drinkwater w/ 62 rd ang (mostly solid). Blacks from Cottonwood w/ 71 young (home raised), Rothleutner 40 young (home raised), Fullerton w/ 50 blk. Blk, bwf from Dam Rn 150 (3 yrs), bred ang & heref. Johnson w/ 33 (3-6yrs) bred char. Plus many others.  
[www.valentinelivestock.net](http://www.valentinelivestock.net)  
**Greg Arendt, Mgr., Cell: 402-376-4701**  
Watch live broadcast of special sales on [cattleusa.com](http://cattleusa.com)

**Eureka Livestock Sale**  
P.O. Box 267 Eureka, KS 67045  
620-583-5008 Office 620-583-7475  
Sale Every Thursday at 11:30 a.m. Sharp  
Like Us On Facebook!

**THERE WAS NO SALE HELD ON JUNE 4**

**EARLY CONSIGNMENTS FOR JUNE 11**  
• 51 blk bwf Red Angus X str & hfrs, 400-650 lbs, weaned 45 days or more & dbl. vac.  
• 33 blk Red str & hfrs, 700-950 lbs, long time weaned & dbl. vac., hfrs open.  
• 200 packer cows.

**NO SALES JUNE 18, JULY 2**  
**WE WILL HAVE SALES JUNE 11 & 25**

We appreciate your business!  
**Ron Ervin - Owner-Manager**  
Home Phone - 620-583-5385  
Mobile Cell 620-750-0123  
**Austin Evenson - Fieldman**  
Mobile Cell 620-750-0222  
If you have any cattle to be looked at call Ron or Austin

**Central Livestock**  
811 N. Main St.  
South Hutchinson, KS  
[www.centallivestockks.com](http://www.centallivestockks.com)  
Office: 620-662-3371  
or Matt Hoffman (Owner): 620-727-0913  
Hay Auction- Every Tuesday at 9:00 a.m.  
Cattle Auction- Every Tuesday at 10:00 a.m.  
Hog/Sheep/Goat Auction- Every 3rd Saturday  
Horse/Tack Auction- Every 1st Saturday  
**Tues., June 16<sup>th</sup> - Holstein Sale**  
**Sat., June 20<sup>th</sup> - Hog/Sheep/Goat Sale**  
**Tues., June 23<sup>rd</sup> - NO SALES**  
**Tues., June 30<sup>th</sup> - NO SALES**  
Check website/ Facebook for schedule changes!

**EL DORADO LIVESTOCK AUCTION, INC.**  
**316-320-3212**  
Fax: 316-320-7159  
2595 SE Highway 54, P.O. Box 622, El Dorado, KS 67042  
Market Report - Sale Date 6-4-20. 118 Head.  
Trend on Calves: Steady on light supply. Trend on Feeder Cattle: No Test. Butcher Cows: high dressing cows \$60.50-\$68; Avg. dressing cows \$50-\$60. Butcher Bulls: Avg. to high dressing bulls: \$80.50-\$89. Trend on Cows & Bulls: Fully steady.

Not enough of any weight class for a good test.  
Several loads of Feeders Next Week.  
We are also having a Feeder Cattle Special on June 25!  
Will be closed July 2 & July 9

**THURSDAY, JUNE 11, 2020 SALE**  
**EXPECTING 800 HEAD!**  
• 100 mostly black steers & heifers, homeraised, long weaned, no implants, shots, 650-750 lbs.  
• 200 mixed heifers, 700-800 lbs.  
• 40 mixed steers, 750-800 lbs. • 120 mixed steers, 900-975 lbs.  
\*\*\*\*\*  
**CHECK OUR WEBSITE AS WELL AS FACEBOOK FOR UPDATED LISTINGS!**  
**STAY TUNED FOR EARLY CONSIGNMENTS!**  
We welcome your consignments!  
If you have cattle to consign or would like additional information, please call the office at 316-320-3212  
**Check our website & Facebook for updated consignments: [www.eldoradolivestock.com](http://www.eldoradolivestock.com)**  
To stay up to date on our latest announcements you can "Like" us on Facebook

Josh Mueller Owner/Manager (316) 680-9680	Steven Hamlin (602) 402-6008 (H) (620) 222-1199 (M)
Chris Locke (316) 320-1005 (H) (316) 322-0675 (M)	Van Schmidt, Fieldman (620) 367-2331 (H) (620) 345-6879 (M)

**Cattle Sale Every Thursday 11:00 AM**



**By Miranda Reiman**  
When a family of six shops for a new car, they'll enter the lot and pass by the compacts and convertibles. The pool of possible purchases narrowed by their end goal of seating a large family, they can be more discerning from there.

That's kind of how the Targeting the Brand™ program works to help cattlemen trying to add carcass quality to their herds and produce more Certified Angus Beef ® (CAB®) qualifiers.

Since 2017, the logo has appeared in sale catalogs to denote sires that excel in marbling (Marb) expected progeny difference (EPD) and the Grid Dollar Value Index, or "dollar G" (\$G).

"If a bull buyer wants a calf crop that has a greater chance of making CAB, it helps him identify the genetics that will help him

do that," says John Grimes, owner of Maplecrest Farms, Hillsboro, Ohio, and CAB board chair. "The trait that sorts cattle out of CAB quicker than anything is lack of marbling."

It's a way to provide an initial filter.

"Our bull customers get so much information that it's easy to be overwhelmed. When you put this label on there, it's an easy way for them to identify, 'Hey, I don't have to know what their parameters are, but I know this bull meets them,'" says John Teixeira, Teixeira Cattle Company, Terrebonne, Ore. "We do a lot with our eyes and it's a quick visual that says, 'Hey, this bull is in the world that I need.'"

As of May 29, the requirements for the Targeting the Brand logo have tightened up from breed average or above in both \$G and Marb to +0.65

for Marb and +55 for \$G. That's based on an Angus Genetics Inc. analysis of 8,600 sire-identified carcass records that found the combined thresholds most likely to produce at least 50% CAB qualified carcasses.

It's slightly higher than the previous breed average requirements, so one in four non-parent Angus bulls now qualifies for the designation. Those numbers will be evaluated every two years, and adjusted based on the most current information.

"Of all Angus-influenced fed cattle eligible for CAB, only 35% qualify, but we are really looking at how we continue to grow that percentage to meet demand," Lee says, noting a two-billion-pound sales goal the next decade or so.

"If everyone wants to get a piece of the pie, we have to keep making

the pie bigger," she says. "That's a cliché a lot of people use, but the bigger the CAB pie becomes, the more room for commercial producers to capitalize on the value of buying high-quality registered Angus bulls."

The more demand, the better the pull-through model works.

Those who retain ownership reap the benefit directly, Teixeira says, while those who sell at weaning can count on buyers putting more stock in that as time goes on.

"There's no premium for Select, there's less premium than there used to be for Choice, but more for CAB and Prime. We've got to allow these bull customers to have the opportunities to know these might bring them a premium," he says.

It's not a guarantee or an end-all selection tool, "these are just mini-

mums," Lee says. Producers who already get 50% or higher CAB acceptance rates should aim higher still.

"We know marbling is highly heritable. We know genetics impact roughly 40% of the marbling potential in those cattle; but that said, there's another 60% not explained by genetics," she says. When environment plays a role, high-quality management has to match to get intended results. "The Targeting the Brand logo is not a guarantee that progeny from any animal will hit CAB. It's an indication that the genetic potential is higher with that animal."

It's a way to push for incremental improvement, Grimes says.

"There are some people out there who will say, 'All Angus grade high,' or, 'The average Angus is good enough,'" he says. "The database says we have to up

our game."

Don't mistake that for a marbling-only message though. "These numbers give producers a lot of latitude to place emphasis on carcass but still select for other traits that we know are really important," Lee says. "We always discourage producers from single-trait selection."

History shows progress can be made on multiple fronts at the same time, Grimes says.

"People used to think we couldn't have calving ease and high growth, and breeders have shown that they can do that. So it's not realistic to think we can do the same with elite carcass merit and maternal function," he says.

Using the Targeting the Brand logo as a selection tool is an easy first step.

For more information on the program, visit CAB-cattle.com.

# Consider control options to get ready for sericea

**By David G. Hallauer, Meadowlark District Extension agent, crops & soils/horticulture**  
There are many char-

acteristics of sericea lespedeza that help it thrive in grasslands. It has the ability to produce a tremendous amount of seed,

and that seed can lay dormant for long periods until conditions are opportune to sprout and grow. The result is a seed bank that will persist for years to come. That seed bank will soon be rearing its ugly head for another season.

Control programs are, to some degree, limited. There are no known biological controls. Mechanical control via the use of mowing or animals needs to be done at the right time and done on a consistent

basis. Herbicide programs can be successful, but they, too, will need to be repeated. It is no wonder sericea is one of our most troublesome noxious weed species.

Start with proper identification. Sericea is a perennial legume with trifoliate leaves. These leaves are club or wedge-shaped, lining a stem (vegetative now, woody later...) that is typically about three feet tall – or taller. Blooming starts in August with

white to cream-colored flowers exhibiting a purple 'throat.' Seed is produced in September. Once you know what it looks like, it is easily identified, but there are other similar species that may cause confusion.

Mechanical control can be successful in combination with chemical control efforts. Grazing with goats (four to five per acre of sericea) can help reduce seed production. Frequent mowing in mid-late July is an option, but be careful to avoid damage to desirable plants. Herbicide applications four to six weeks after mechanical control can further increase control.

Work using prescribed burning has shown it can be a remedy. Spring burns tend to increase seed ger-

mination, requiring in-season herbicide applications to reduce sericea levels. Fall burns (August/early September) have been found to nearly eliminate seed production.

Herbicide programs also provide good results. Early season applications on vegetative stage sericea with triclopyr containing products (PastureGard HL/Remedy) work well. Products containing metsulfuron are more effective in late summer when sericea is actively blooming. Broadcast or spot applications are both effective when applied according to label directions.

For further information on product names/rates/etc., request a copy of the 2020 KSU Chemical Weed Control Guide available from your District Office.

## ESTATE AUCTION

**SUNDAY, JUNE 14, 2020 — 12:30 PM**  
127 Pearl Street — ROSSVILLE, KANSAS

**COLLECTIBLES:** Worlds largest collection of A&W Root Beer Mugs - all size shapes and designs; Corningware; Fiesta ware; Prussia Fine Dishes; Pottery; Marble Collection; Old RC, Coke & Pepsi Bottles; 1930-1970 license plates; Korean Tea Pots; Avon Christmas Plates; Norman Rockwell Steins; Stamp collection; Barbie Doll ornaments; Multi Year Super Bowl Collection; Past KC Chief Super Bowl Memorabilia; Multi Year World Series Memorabilia; KC Chiefs Rookie Cards; KC Chiefs Cards; 1990-91 Baseball Cards; NBA Cards; Star Trek ornaments; Star Trek glasses; Sport Figure ornaments; Avon Christmas Plates; 25th Anniversary Disney Glasses; Salt & Pepper collection; Ty Beanie Collection; Disney Plates; (3 sets) 1980-2004 (25 years) Holiday Budweiser Beer Steins; Assorted Asian Vases; Asian Tea Cups; Large variety KSU Wildcat Football and Basketball Figurines; WSU Figurine; Joe Montana Collector set; Red Lobster glasses; 2000 Magic Kingdom glass set.

**HOUSEHOLD:** Like new Sofa & chair; Wood Twin Bunk Bed; Like new Rollaway Bed; Full size Bed & dresser; Cedar Chest; Washer & Dryer; Refrigerator; End tables; (2) TVs; Older Stereo; Microwave; Dining room table & chairs; (3) room dehumidifiers; (2) shrimp colored chairs.

**ANTIQUES:** Queen bed, 2 dressers & end table; 2 red velvet chairs; Collapsible Table; Grandfather Clock; Upright Radio Console; Cast iron skillets; Ping Pong table; Oil & drip cans; Oak chairs; Toy chairs; Toy wagon & wheelbarrow; 1980-1990 Playboy Magazines featuring Donald Trump front cover 1990; Antique Wood Cheese container; Villeroy & Boch Moritzburg Dec 166 Lamp; Alcohol bottles with wood holders; Mason Jars with wire closures; Silver TeaPot & Pitcher; Silver Place settings; Silver salt & pepper shakers. **DISHES & GLASSWARE:** Noritake Silverdale China Set; Narumi China Set - Silver Pine design; Wedding Reception dishes; Crystal Goblets; Assorted Cut Glass sets; Stoneware; Blue Speckled Enamelware; Cobalt Blue Candlesticks & Bowl; Amber Stone Dishes; Century Ivy Saucers.

**LIFELONG CONTRACTOR TOOLS:** Cement Flat Work tools; Construction Grade Extension Cords; Work Benches; Table Saw - multiple sets on blades; Ladder; 10" Jig Saw; Roto Zip Spiral Saw; Hand B&D Grinder; Frame Nail gun; Porter Cable Nail gun; Skill Saw; 1835 Plunger Router; Hole Saw blades; Professional Power Drills; Battery Power Drills; 4000 KW generator; (2) 3' workbenches with electric hookups; Bench grinder; Multiple 3' & 4' metal storage shelving units; Workbench with vice attached; Multiple sizes pipe wrenches; Multiple hand saws; Sheetrock tools/hammers; Jacks/Rollers; (2) Air Compressors; Snow Blower; Power Washer; Survey Equipment; (2) shop vacs; Planers; Every hand tool imaginable; (5) Nut/bolt/Nail Storage containers; Variety of Axes, sledge hammers; Wiring tools; 60 years worth collection of Misc "Hardware Store Items"; Plumbing tools & supplies; Electrical tools and supplies; Every Nails/screws/bolts/hinges, etc imaginable; (2) Wood storage Cabinets; Portable lighting; *Misc items too numerous to mention.*

**SELLER: HAROLD COUCHMAN ESTATE**

**TERMS:** Cash or good check. Announcements made day of auction take precedence over previous printed materials. All items sold as is, where is. Not responsible for accidents.

Jeff Ruckert, Owner/Broker/Auctioneer

2049 Fort Riley Lane, Manhattan, KS 66502

785-565-8293

jctt.97@gmail.com

**www.RuckertAuctions.com & on Facebook**

## 2-DAY AUCTION

**SATURDAY, JUNE 27 & SUNDAY, JUNE 28, 2020**

**9:30 AM BOTH DAYS**

**4849 NW OLDHAM ROAD — ROSSVILLE, KANSAS**

**(West of Rossville 1 mile on Hwy. 24 to Maple Hill Road then West 2 1/2 miles to Oldham Road then South)**

**DAY #1 (JUNE 27, 2020)**

**REAL ESTATE (Sells Saturday at approx. 12:00 Noon)**

**COUNTRY HOME & OUTBUILDINGS ON APPROX. 10 ACRES**

This home is located between Rossville and St. Marys, Kansas on 10 Acres of Kaw Valley farmland. The home has kitchen, dining room, living room, bedroom, bath, utility porch and enclosed front porch on main floor. There are 2 bedrooms upstairs and a partial basement. The living room, dining room and main floor bedroom has Oak floors. The property is on rural water and has a well for garden & livestock. The farm currently has approximately 7 1/2 Acres of tillable farmland, approximately 1 1/2 acres brome pasture that could also be farmed with the balance in homestead. There is a detached 2-car garage, barn, large chicken house, as well as 4 other buildings on the property. Good fences and pens are great for livestock. The 500 gallon propane tank sells with the property.

Buyer to pay 10% down day of Auction with balance due on or before July 29, 2020. Property is being sold subject to Tenant's Rights on tillable acres. STATEMENTS MADE DAY OF AUCTION TAKES PRECEDENCE OVER ANY OTHER INFORMATION. Property selling 'as is'. Buyer's to conduct all inspections including lead base paint inspection prior to Auction at their expense if requested.

**\*\*OPEN HOUSE Wednesday, June 17, 2020, 3-7 PM or by appointment by contacting Vern Gannon Broker/Auctioneer 785-770-0066 or Gannon Real Estate & Auctions 785-539-2316. Broker discloses he is Co-Executor & partial owner of property.**

**PERSONAL PROPERTY SELLING BOTH DAYS! Including lots of Antiques & Collectibles, Tractors, Machinery, Collectible Wrenches & MUCH MORE! Watch for listings or see website!**

**LEO & ROWENA GANNON ESTATE**

**GANNON REAL ESTATE & AUCTIONS**

**785-770-0066 • MANHATTAN, KANSAS • 785-539-2316**

**Bob Thummel & Zach Sumpter, Auctioneer**

**PICTURES on website: www.gannonauctions.com**

## 2-DAY AUCTION

**BOTH DAYS: Auction held at Clay Center Armory, 12th & Bridge — CLAY CENTER, KANSAS**

**FRIDAY, JUNE 26, 2020 — 9:00 AM**

Selling will be an assortment of tools, truck and automobile related items, household goods and collectibles. Large Craftsman tool box and Snap-on top box clear full of mostly Craftsman tools. Also about 40 pieces of antique and contemporary furniture. **Huge variety of items still being uncovered and discovered.**

**SATURDAY, JUNE 27, 2020 — 9:00 AM**

**Large toy auction, approximately 1,000 toys in total.**

Many new in box John Deere tractors, combines and implements. Most were purchased new over the last 5 years. Some farm toys are used. Also many new in box race cars and die cast trucks. Hundreds of new hot wheels in bubble wrap. JD kids wagon, new. Lots of new JD pictures and collectible items. Most of these toys are store shelf new. Do your Christmas shopping early.

**TERMS:** Cash or good check day of sale. Not responsible for accidents. **NOTE: Social distancing will be practiced. Masks are encouraged.**

**Hand-washing restrooms available.**

**CLERK:** Shirley Riek, 526 Frederick, Clay Center, Ks. 67432

**Go to kretzauctions.com or kansasauctions.net**

**CEDRIC PFAFF, SELLER**

Auction conducted by: **Kretz Auction Service**

**Greg Kretz, Salesman & Auctioneer: (785) 630-0701**

**Guest Auctioneer:**

**Randy Reynolds, Abilene, KS (785) 263-5627**

# Sell At St. Marys Tuesdays

Sell Or Buy Cattle By Auction STARTING TIME 10:30 AM

**Buyers & sellers are welcome in the ring area with social distancing being practiced. You can watch the live auction at www.dvauction.com . If you need assistance with watching or bidding online contact DV Auction customer service at 402-316-5460. Thank you for your cooperation. If you would like approval to bid online from the safety of your home, please do the approval process on www.dvauction.com prior to Tuesday.**

**We sold 746 cattle June 2. Steer and heifer calves were steady on a light test. Feeder steers and heifers were steady to \$2.00 lower. Cows and bulls sold steady to \$4.00 higher.**

STEER & BULL CALVES		
1 bwf str	300 @ 180.50	
1 blk bull	380 @ 176.00	
1 blk str	480 @ 166.00	
24 mix str	510 @ 154.50	
3 blk str	515 @ 154.00	
2 blk str	443 @ 145.00	
3 blk/red bulls	510 @ 141.00	
1 blk str	530 @ 125.00	
STOCKER & FEEDER STEERS		
8 blk str	575 @ 154.50	
3 blk str	667 @ 132.50	
4 blk str	741 @ 131.50	
7 blk str	683 @ 128.00	
60 blk/char str	910 @ 122.60	
6 blk str	863 @ 122.50	
4 blk str	756 @ 120.50	
58 blk/red str	888 @ 119.60	
57 blk/red str	933 @ 119.25	
55 blk/bwf str	909 @ 118.75	
20 blk str	870 @ 118.50	
61 blk/bwf str	884 @ 118.10	
59 mix str	954 @ 115.00	
61 mix str	1038 @ 105.25	
3 blk str	987 @ 105.00	
5 blk str	1311 @ 96.00	
HEIFER CALVES		
2 blk hfr	338 @ 156.00	
3 blk hfr	327 @ 151.00	
1 sim hfr	310 @ 147.00	
4 blk hfr	518 @ 143.00	
1 bwf hfr	460 @ 136.00	
7 blk hfr	500 @ 136.00	
2 blk hfr	453 @ 135.00	
2 blk/bwf hfr	513 @ 133.00	
3 blk hfr	525 @ 130.00	
STOCKER & FEEDER HEIFERS		
4 blk/red hfr	576 @ 131.00	

1 blk hfr	605 @ 123.00	1 blk cow	1125 @ 68.50	1 blk cow	1230 @ 56.50
11 blk hfrs	808 @ 119.75	1 blk cow	1235 @ 67.50	1 brang cow	985 @ 56.00
2 blk hfrs	588 @ 119.00	1 bwf cow	1105 @ 67.00	1 blk cow	1035 @ 54.00
16 blk/red hfrs	703 @ 115.50	1 blk cow	1385 @ 66.50	1 char cow	1015 @ 52.00
1 blk hfr	800 @ 111.00	1 blk cow	1390 @ 66.00	BRED COWS & PAIRS	
1 blk hfr	840 @ 106.00	1 blk cow	1450 @ 65.50	1 blk cow	@ 1050.00
27 blk/bwf hfrs	908 @ 105.00	1 blk cow	1375 @ 65.00	1 blk cow	@ 800.00
COWS & HEIFERETTES		1 sim cow	1325 @ 64.50	2 blk cows/cvs	@ 760.00
1 blk hfrt	1030 @ 83.00	2 blk cows	1460 @ 64.00	1 blk cow/cf	@ 760.00
1 blk hfrt	1205 @ 79.00	1 char cow	1310 @ 63.50	1 blk cow/cf	@ 750.00
4 blk/bwf hfrts	974 @ 78.50	1 blk cow	1360 @ 63.00	5 blk cows/cvs	@ 725.00
1 blk hfrt	910 @ 76.00	1 red cow	1380 @ 62.50		
1 blk cow	1250 @ 74.50	1 blk cow	1245 @ 62.00		
1 blk cow	1510 @ 73.00	1 blk cow	1445 @ 61.00		
1 bwf cow	1385 @ 72.50	1 bwf cow	1275 @ 60.50		
1 bwf cow	945 @ 72.00	1 red cow	1355 @ 60.00		
1 blk cow	1420 @ 71.50	1 limo cow	1020 @ 59.50		
2 blk cows	1630 @ 70.50	1 blk cow	1105 @ 59.00		
1 blk cow	1505 @ 69.50	2 char cows	1195 @ 58.00		
2 blk cows	1085 @ 69.00	1 blk cow	1265 @ 57.50		

**WATCH OUR AUCTIONS LIVE ON DVAuctions.com**

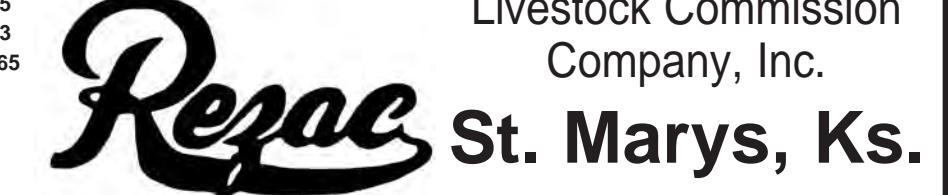
## CONSIGNMENTS FOR JUNE 9:

- 15 blk steers & heifers, 400-450 lbs., vacc.
- 25 blk steers & heifers, 500-600 lbs., vacc.
- 116 black steers, 825-900 lbs., off brome
- 65 black steers, 850-875 lbs., off brome
- 62 black Charolais steers, 825-850 lbs.
- 61 black crossbred steers, 950-975 lbs.

Our CONSIGNMENTS can now be viewed after 12 Noon on Mondays by going to [www.grassandgrain.com](http://www.grassandgrain.com) & logging onto the online subscription

FOR INFORMATION OR ESTIMATES: REZAC BARN ST. MARYS, 785-437-2785 LELAND BAILEY TOPEKA, 785-608-4005 DENNIS REZAC ST. MARYS, 785-437-6349 LYNN REZAC ST. MARYS, 785-456-4943 DENNIS' CELL PHONE 785-456-4187 REX ARB MELVERN, 785-224-6765 KENNETH REZAC ST. MARYS 785-458-9071

**Toll Free Number.....1-800-531-1676**  
Website: [www.rezACLIVestock.com](http://www.rezACLIVestock.com)  
AUCTIONEERS: DENNIS REZAC & REX ARB



Livestock Commission Company, Inc.

**St. Marys, Ks.**