



## Man health, ag advocacy center stage at statewide Women in Ag event

By Donna Sullivan,  
Editor

The Nemaha, Jackson and Pottawatomie County Conservation Districts hosted their third annual statewide Women in Agriculture event on February 22 in Corning. While slated as Women in Agriculture, men were invited as well, and the strong lineup of speakers drew a full house to the Corning Community Center. Nationally known speaker Jolene Brown, who headlined the first event two years ago, was welcomed back by popular demand and gave two presentations, "It's a Jungle Out There!" and "The Balancing Act: Ten Ideas to Relieve Stress and Bring Renewal to Our Farm and Family Life." With straight-talk and humor, Brown encouraged the audience to assign as much priority to caring for themselves as they do caring for their farms.

Brown was followed by Brandi Buzzard Frobose, who was recently named 2019 Advocate of the Year by the National Cattlemen's Beef Association. Along with her husband, Buzzard raises purebred Gelbvieh and Balancer Cattle in Greeley. She graduated from Kansas State University with a bachelor's degree in animal science and agriculture economics, then went on to earn her master's in animal behavior.

After describing the methods and protocols used in her operation, she posed the question, "Do you think that was boring? Really, you won't hurt my feelings if you say yes." Her point was that although producers might find their day-to-day practices uninteresting, consumers have a completely different point of view. "The consumer in the grocery store doesn't think it's boring," she said. "They want to know where their food comes from, is



Jolene Brown was back by popular demand and talked about balancing life on the farm with our health and well-being.

Photos by Donna Sullivan

it organic or conventional, what pasture was it born in, what date, what was it's mother's tag number? And that's the importance of opening that ranch or farm gate and telling your story so people feel more confident in where their food comes from."

She continued that while agriculture has done a phenomenal job of producing the largest, safest, most affordable food supply in the world, there is a severe lack of consumer attachment. "We also need to be busting our tails to talk to people about where their food comes from," she said. "We have a lot of work to do and if every one of us is doing a little bit every day, we're going to help create confidence in our food supply again. If for no other reason, you've got to stand up for your livelihood. I want to pass our ranch down to our daughter and I would like her to pass it down to her children. And for us to do that, there has to be a ranch. We have to be able to produce beef in the United States and raise corn and

grow grapes and have pigs. My message applies to all different livestock and commodities."

She offered guidelines for connecting with consumers that everyone can apply, whatever their situation or audience they are trying to reach. To start, identify your target audience. For her, it is the food-curious parent. "All the content you create should be with your target audience in mind," she said. Find common ground on similar topics, connect on those points, then add in agriculture knowledge as you go along, she advised.

If you want to be edgy, blog about hot-button issues, but beware of the potential for blowback. Don't spread bad media, such as a video showing improper animal care. Reference it, but don't share it so that it can continue to be replayed. "Every time you reshare a video or article it gives animal rights activists or anyone who is against agriculture more fuel," she pointed out. "Also, don't open a door to a firestorm. If they aren't



Brandi Buzzard Frobose discussed the need for advocating for agriculture and shared her insights on how to do it effectively.

talking about you, don't run in and make it about you." Buzzard also emphasized working within your area of expertise. "Stay in your own lane and talk about what you know about," she said, adding that she doesn't talk about crop production, because they don't farm. "You're not required to be an expert on everything," she said. "Just admit you don't know, but don't lie."

Choosing the most effective medium for communicating your message is the next step. Social media platforms like Facebook, Twitter, Instagram, blogs and Snapchat are popular. And of course, there is talking to people face-to-face. "Pick how you're going to talk to people and then share your story," she said, but cautioned against taking on too many platforms at once. "It's better to do one really well than four minimally well," she said.

While communicating the story of agriculture is important, Buzzard pointed out the other critical element of communication – listening. "There is listening to be heard and listening to understand," she explained. "Listening to understand is actually focusing in and hearing what someone is saying and processing it and responding appropriately."

Buzzard gained national attention after a letter she wrote to Rep. Alexandria Ocasio-Cortez, concerning her Green New Deal and its effects on agriculture, went viral. Although the congresswoman never responded, Buzzard was interviewed by MSNBC and Fox News, and her letter was seen by over a quarter of a million people. While she said she was treated very fairly by both news outlets, she did have some very hateful, negative feedback online. "You have to have very

thick skin," she admitted. "It's work worth doing, but anything worth doing is going to be a little hard. So you can tackle tough issues, just be aware that you might get some blowback."

Buzzard also emphasized that the size of your following isn't as important as simply sharing your message. "You don't have to be on TV or on the radio or have a blog with a million followers to make a difference," she said. "All you have to do is share about what you are doing and if you create a relationship and help one person be more confident about where their food comes from – success. One person is going to teach their kids that their food is safe and those kids are going to grow up know that that beef or corn is safe and so on. Speak up, do what's right and don't be afraid to stand up for your livelihood."

## Veterinary medicine study develops new vaccine method for cattle disease

Researchers at the Kansas State University College of Veterinary Medicine, in collaboration with Iowa State University, have developed a new vaccine delivery platform to produce long-lasting protection against anaplasmosis infections.

Bovine anaplasmosis, caused by the blood-borne parasite *Anaplasma marginale*, is the most prevalent tick-transmitted disease of cattle worldwide and causes significant disease loss to beef producers in the United States.

"Currently, a common strategy to control anaplasmosis is to provide mineral or feed contain-

ing the antibiotic chlortetracycline to cattle on pasture," said Andrew Curtis, doctoral research assistant in the laboratory of Hans Coetzee, professor and head of the anatomy and physiology department.

"This practice has raised concerns about the potential emergence of antimicrobial resistance in bacteria that may pose a risk to human and animal health," Curtis said. "Although there is an experimental vaccine available to control anaplasmosis, it requires multiple injections and it has not been evaluated in published research studies."

The objective of the College of Veterinary Medicine study was to develop a single-dose implant vaccine platform that provides long-term immunity against anaplasmosis infections by releasing vaccine contents over an extended period.

This new single-dose vaccine, which is administered in the back of the ear, has been shown to protect against clinical anaplasmosis for up to two years and could potentially help make anaplasmosis control more accessible and convenient to livestock producers, Curtis said.

"The concept of providing cattle with a single vaccine implant that could potentially provide lifelong protection against an economically devastating disease, such as bo-

vine anaplasmosis, could revolutionize livestock production," Coetzee said.

Iowa State University currently holds a patent for the implant platform and the K-State/Manhattan Innovation Center is exploring a partnership with Iowa State to further develop this technology.

The first step to a com-

mercially available product would include finding a commercial partner to seek approval from the U.S. Department of Agriculture.

In addition to Curtis and Coetzee, K-State researchers involved with the project include Miriam Martin, Brandt Skinner, Shawnee Montgom-

ery, Tippawan Anantatat, Kathryn E. Reif, Majid Jaber-Douraki, Emily J. Reppert and Michael Kleinhenz. Researchers from Iowa State include Sean Kelly, Balaji Narasimhan and Douglas Jones.

This project was supported in part by the Iowa Livestock Health Adviso-

ry Council and the faculty start-up funding provided by Kansas State University.

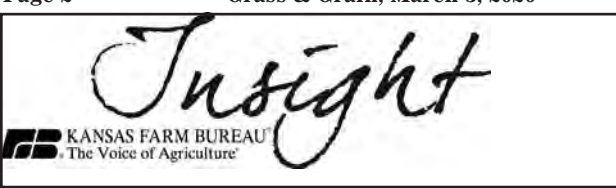
The study, "Rapid Communication: Development of a subcutaneous ear implant to deliver an anaplasmosis vaccine to dairy steers," was published in the *Journal of Animal Science*.

## Patiently awaiting spring



This old farmstead along Highway 9 west of Waterville looks ready to chase away the winter blues to make way for spring.

Photo by Kevin Macy



## In Pursuit of Dignity and Discipline

By Jackie Mundt, Pratt County farmer and rancher

A recent whirlwind trip took me to both Gettysburg and Washington, D.C. in the same week. Both sites were good places to reflect on people, politics and the ideals that guide our actions.

There is something profound about visiting the battlefields of Gettysburg. It is hallowed ground, full of sacrifice. The site of a battle fought by a nation divided. Brothers and

friends fought against each other.

Three years after the gruesome battle, while the Civil War still raged on in the South, Abraham Lincoln visited and gave his famous Gettysburg Address. In it, he did not gloat over his troops' victory or demean the southern soldiers who fell short in their attempts. Instead, he recognized all men who fought for ideals of deep personal significance.

Another day I stood

looking toward the U.S. Capitol from the steps of the Lincoln Memorial, where Martin Luther King Jr. gave his famous "I have a dream..." speech. A line from the speech came to mind, "Let us not seek to satisfy our thirst for freedom by drinking from the cup of bitterness and hatred."

That is where we are; once again divided. This time it is not by geography but by party lines. Our highest officials are constantly posturing for ways to snub each other, and people are criticized for whom they sit by at a baseball game. Bitterness and hatred ring out — reverberated from sea to shining sea on every device or media through news out-

lets and social networks.

Agriculture seems to be one of the few places where politicians can still reach across the aisle and work for the good of the country. Even that is in danger as old school politicians, who have experienced the fruits of collaboration and bipartisan work, reach retirement.

When did our society lose interest in the common good? Have we become so egotistical and spoiled we believe in the all or nothing mentality, where you are either with us or against us — and if you are against us, you are my enemy?

It does not have to be that way. We have the ability to do as King suggested in his speech and struggle

for freedom "on the high plain of dignity and discipline."

My dream for our country is that we would rededicate ourselves to the ideal of being a nation that is indivisible. A nation full of people who choose to practice civility and extend respect to all around them, where a person can be open to views that do not conform to party line and strive to create compromises for the good of all people.

It is time for us to hold ourselves to the highest standards of civility and seek out friendships with those who challenge our mindset. Move away from doing what is comfortable to the difficult that will make a difference in the

world. Value those who think critically and speak with reason to their position. Refuse to be defined by ideas that do not fit your beliefs. And if your idea does not prevail, do not hold bitterness or contempt in your heart; instead practice grace and humility.

We live in a divisive time, but I have faith that our nation's commitment to pursuing freedom and liberty is strong enough to overcome the differences at hand.

"Insight" is a weekly column published by Kansas Farm Bureau, the state's largest farm organization whose mission is to strengthen agriculture and the lives of Kansans through advocacy, education and service.

## USDA and USTR announce progress on implementation of U.S.-China Phase One Agreement

U.S. Secretary of Agriculture Sonny Perdue and United States Trade Representative Robert Lighthizer have announced that China has taken numerous actions to begin implementing its agriculture-related commitments under the landmark U.S.-China Phase One Economic and Trade Agreement on schedule. The agreement entered into force on February 14, 2020. These actions include:

Signing a protocol that allows the importation of U.S. fresh chipping potatoes (U.S. Chipping Potatoes Protocol Announcement);

Lifting the ban on imports of U.S. poultry and poultry products, including pet food containing poultry products (Poultry and Poultry Products Announcement);

Lifting restrictions on imports of U.S. pet food con-

taining ruminant material (Pet Food with Ruminant Ingredients Announcement);

Updating lists of facilities approved for exporting animal protein, pet food, dairy, infant formula, and tallow for industry use to China;

Updating the lists of products that can be exported to China as feed additives; and

Updating an approved list of U.S. seafood spe-

cies that can be exported to China.

In addition, China has begun announcing tariff exclusions for imports of U.S. agricultural products subject to its retaliatory tariffs (Tariff Exclusion Process Announcement), and it announced a reduction in retaliatory tariff rates on certain U.S. agricultural goods (Tariff Rate Adjustment Announcement). These types of actions will

facilitate China's progress toward meeting its Phase One purchase commitments.

"President Trump and this administration negotiated a strong trade agreement with China that promises significant benefits for American agriculture," Perdue said. "We look forward to realizing these benefits this year and are encouraged by progress made last week. We fully

expect compliance with all elements of the deal."

Lighthizer said, "President Trump signed the Phase One agreement a little more than a month ago and we are already seeing positive results. Under the President's leadership, we will ensure the agreement is strictly enforced for the benefit of our workers, farmers, ranchers and businesses."

## Corteva Agriscience says advanced plant breeding shows path to greater climate resilience and food security

Corteva Agriscience global plant breeding leader Geoff Graham told attendees of the 2020 USDA Ag Outlook Forum that advanced plant breeding techniques and proven success in improving crop productivity in developed regions provides a road map to managing risk from food insecurity and cli-

mate volatility around the world. The USDA Forum is focused on Innovation in Agriculture and earlier U.S. Secretary of Agriculture Sonny Perdue announced the Agriculture Innovation Agenda. Graham's remarks were made as part of a session track on managing risk and ensuring sustainability in

production agriculture.

"Not only is agricultural productivity critical to meeting the demands of a growing population, it's also a critical tool to combat climate volatility," said Graham. "We have proven that innovative breeding technologies such as molecular markers, precision phenotyp-

ing, predictive analytics, biotechnology, CRISPR and digital tools can help agriculture better manage the challenges of extreme weather."

USDA Risk Management Agency administrator Martin Barbre chaired the "Mitigating Production Risk" panel discussion during the Forum, which centered on the challenges that farmers and government decision makers face during growing seasons with extreme

weather conditions. He noted that 2019 was one of the wettest farming years on record, while 2012 was one of the driest. Despite increased weather variability, overall crop yields continue to trend upward over time.

Graham said the almost seven-fold increase in average corn yields achieved in North America since 1920 means we've grown millions of additional bushels of grain without putting a corre-

sponding number of acres into agricultural production. Yield improvements over the last century have increased productivity from an average of 25 bushels per acre to 170 bushels per acre. Further, he said if the top 20 world corn-producing countries improved their production levels to those found in the U.S. 20 years ago, it would be the equivalent of adding another 100 million acres of farmland.

"We're producing more outputs with fewer inputs," explained Graham. "But food insecurity and climate volatility do not impact the globe uniformly and we must also work to develop new cropping systems adapted to local conditions."

"This will take all the tools in our toolbox, as well as open and transparent communication between the public, academia, governments and private companies," Graham stated. "Independently, these technologies are just tools — but, collaboratively, they are solutions to some of the world's greatest challenges."

The panel also included remarks from former Illinois state climatologist Jim Angel and USDA-National Agricultural Statistics Service Crops branch chief Lance Honig. Materials from the session are made available on the USDA website.



How many times have we felt our lives were in danger only to have those closest to us not believe just how much peril we were in? I am telling you right now that I am only here because of the Grace of God and a minor miracle. I was nearly in a bad accident because of a farm animal, an accident that might have caused great bodily harm or at least a nasty bruise.

So maybe I ought to tell you just how it all happened. The other night I came home late (after ten and that is late during this time of the year). We had a ewe have lambs while I was gone and apparently this all happened while I was driving home from Topeka. As I got inside the house, I looked down to see that I had a text message from Jennifer. Being a good and safe driver, I had not looked at my phone during the drive. The message simply said that ewe 3125 had a set of twins and would I look at them when I got home before I came inside.

Well, it was too late for that, but grudgingly I put my boots back on and made the trek down the hill to the lambing barn. That was when the accident nearly happened. I know what you are thinking, it must have been the ewe guarding her new lambs. Nope, the animal that nearly caused me bodily harm was the bottle lamb we affectionately call Booger.

Booger was a twin and unlike most bottle lambs, his mother did claim him and she really wanted him. However, Booger weighed less than four pounds and his mother was an extremely tall ewe with a very small udder. There was no way Booger was going to be able to reach the dinner table. Booger has a twin brother who is much bigger, stronger and was the jealous type and that only complicated matters, so we brought him in and made a bottle lamb out of him.

Booger is also our only bottle lamb, so he has become quite spoiled and he has imprinted well on Jennifer and I and realizes that we are his source of breakfast, lunch and dinner. He is also your typical sheep and is always hungry. We tried mixing Booger in with the general lamb population but as soon as he would see us, he would become hungry, slip under the fence and chase us down.

That meant Booger would have to stay in the lambing barn where he could

not slip under the fence. He will have to stay there until he is big enough to stay securely in the main pen. I figure with his rate of growth that will be sometime in 2022.

So, back to my story. It was late, I was sort of grumpy about leaving my warm house and waiting bed to check on a set of twins that I could have walked ten feet from the truck and checked when I got home. I stepped into the barn and looked at the ewe. One lamb was standing up and one was laying down. As an experienced sheep producer knows, I needed to get the lamb up and check it. That was when the near-accident happened.

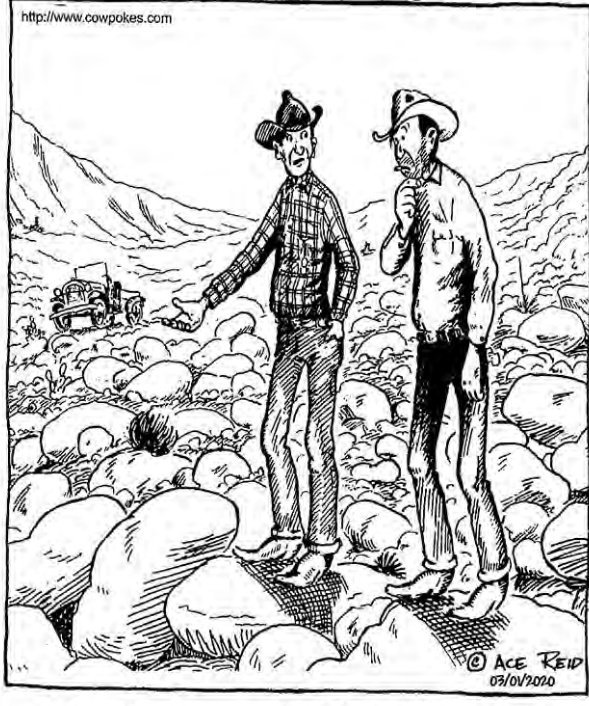
I took a step and as I was about to step down, I noticed a black shadow dart under my foot. In a rare instance of coordination, I tried to move my foot, causing me to lose my balance. As I started to fall, I noticed that my landing spot would be right on the fence and more specifically right on one of the upright supports sticking up off the panel. That would surely lead to a horrific injury or at least a bad bruise.

In another instance of rare dexterity and balance I managed to regain my composure and caught myself on the fence. When I looked down Booger was busy ramming the side of my leg, hoping that I had brought him a midnight snack and completely unaware of the potential doom he had nearly caused me.

I made sure the ewe and both lambs were doing well and tried to slip out the door without Booger. He was glued to me. It took three attempts to shut the door without catching him in it. Finally, I shoved him far enough away to get the door closed.

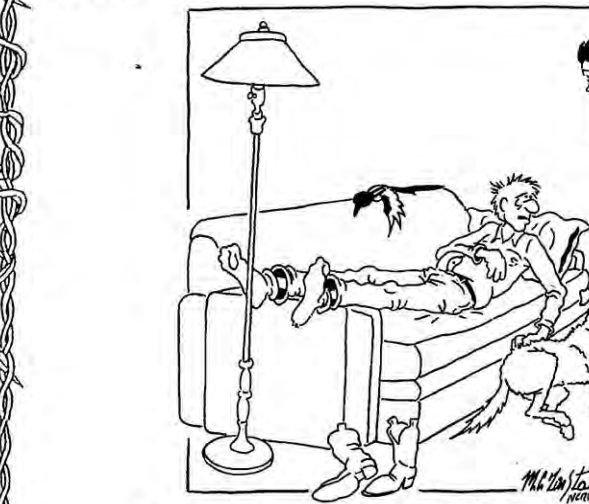
With the thought of my near-death or at least near-bruise experience on my mind I went back in the house for the second time. Jennifer was asleep but woke up as I came in. She asked me how the lambs were but when I told her about my near-accident and how I somehow narrowly missed terrible bodily injury with my amazing reflexes, she rolled over and went back to sleep. That was when I realized that I have too much life insurance and my family does not realize the grave danger and hazards I survive each day.

## COWPOKES® By Ace Reid



"I brand two zeros an' call this outfit the Augt Naught because I ought not to've bought it!"

## EARL...



"ALL THE THINKIN' ABOUT ALL THE WORK I GOTTA GET DONE WAS CAUSIN' ME A LOT OF STRESS, SO I DECIDED TO BACK OFF AND REST AWHILE."

Big Dry Syndicate



785-539-7558  
Fax 785-539-2679

Publisher — Tom Carlin  
Managing Editor — Donna Sullivan  
gandgeditor@agpress.com

— Advertising Staff —

Steve Reichert, Kurtis Geisler, Shelby Mall  
steve@agpress.com, kurtis@agpress.com,  
shelby@agpress.com

GRASS & GRAIN (USPS 937-880)

The newsweekly for Kansas and southern Nebraska, published each Tuesday at 1531 Yuma (Box 1009), Manhattan, KS by Ag Press, Inc. Periodicals postage paid at Manhattan, Kansas and additional offices. Postmaster send address changes to: Ag Press, Box 1009, Manhattan, KS 66505.

Subscription — \$76 for 2 years. \$41 for 1 year, plus applicable sales tax. Outside Kansas, \$51 for 1 year, \$95 for 2 years.

MEMBER OF Associated Press

www.grassandgrain.com

# KDA seeks participants for beef genetics trade mission to Mexico

Together with the U.S. Livestock Genetics Export, Inc. (USLGE) and the New Mexico Department of Agriculture, the Kansas Department of Agriculture has an upcoming opportunity for Kansas' seedstock cattle producers to increase international marketing opportunities for their beef genetics in Mexico. The Kansas Department of Agriculture is seeking individuals to participate in

the trade mission which will take place April 23-27, 2020, in Aguascalientes, Mexico. The mission will include ranch visits as well as networking with producers and exhibitors at the National Angus Show.

Kansas agriculture exports totaled \$3.8 billion in 2018. Mexico is Kansas' number one trade partner, accounting for approximately 33% of our agricultural exports.

KDA's mission is to provide an environment that enhances and encourages economic growth of the agriculture industry domestically and internationally. The Kansas Ag Growth Project identified beef as a key component for state growth.

For more information on the trade mission to Mexico, including instructions on how to apply and application requirements, visit: [agriculture.ks.gov/international](http://agriculture.ks.gov/international).

Deadline for submitting applications for consideration is Friday, March 20, 2020. Airfare, in-country transportation, translation services, and some meals will be provided.

KDA is offering additional market development opportunities for Kansas farmers, ranchers and agribusinesses. State Trade Expansion Program (STEP) grant trade missions are planned

for VICTAM Asia/Petfood Forum Asia, Bangkok, Thailand, March 24-26, 2020; and NAMPO Harvest Day, Bothaville, South Africa, May 12-15, 2020. Additional beef genetic trade missions are tentatively scheduled for the coming year including

two outbound missions to Argentina in late July, and Costa Rica in late August.

For more information contact Suzanne Ryan-Numrich, KDA international trade director, at [Suzanne.Numrich@ks.gov](mailto:Suzanne.Numrich@ks.gov) or 785-564-6704.

# Cargill launches plant-based patty and ground products

Global food and agriculture company Cargill recently announced its new private label plant-based patties and ground products will hit retailers and restaurants in early April.

The new offerings are part of Cargill's inclusive approach to the future of protein - advancing both animal and alternative protein products to meet the expected 70% growth in global demand for protein over the next 30 years.

The plant-based protein products, which were developed through culinary insight, extensive consumer research and innovation, are made in Cargill facilities, delivering the taste and consistency consumers want.

"We've created some of the best tasting products available in the plant-based category today," said Elizabeth Gutschenritter, managing director of Cargill's alternative protein team. "We've combined our deep knowledge of plant proteins with our expertise in R&D, product development and production to deliver products consumers will love."

The new plant-based products from Cargill are an important next step in bringing more protein options to retail stores,

cafeterias, fast food outlets, restaurants and other global locations. With Cargill, foodservice and retail customers can count on an experienced global partner with the supply chain, scale and formulation capabilities to deliver the solutions they need.

"Cargill has a strong history of providing high-quality protein products to customers," said Gutschenritter. "Producing plant-based products

across our global supply chain is the logical next step to expanding our ability to meet consumer needs and bring new value to this category."

Brian Sikes, leader of Cargill's global protein and salt business, notes customers are looking to the company for solutions.

"Cargill's strategy for both food and feed is based on helping customers thrive in a world where demand for protein is ris-

ing," said Sikes.

Cargill has invested \$7 billion globally in animal protein in the last five years while making strategic investments in the alternative protein space.

"We need to keep all protein options on the table," said Sikes. "Whether you are eating alternative or animal protein, Cargill will be at the center of the plate."

PRECISION AERIAL APPLICATION: Pasture \ Crop \ Government



**VersaAir**  
SERVICES, LLC

(877) 79-VERSA  
(316) 882-1540  
[VersaAir.com](http://VersaAir.com)

*Moving?*



Let us know your new address so you never miss an issue of Grass & Grain!

Contact Kevin: [agpress3@agpress.com](mailto:agpress3@agpress.com)  
785-539-7558  
1531 Yuma St., Manhattan, KS 66502

Come see us during our **Open House Event!**

**Thursday, March 5<sup>th</sup>**  
**10 a.m. - 7 p.m.**

**Berg Repair**  
14200 Godlove Rd  
Westmoreland, KS  
785-457-3534





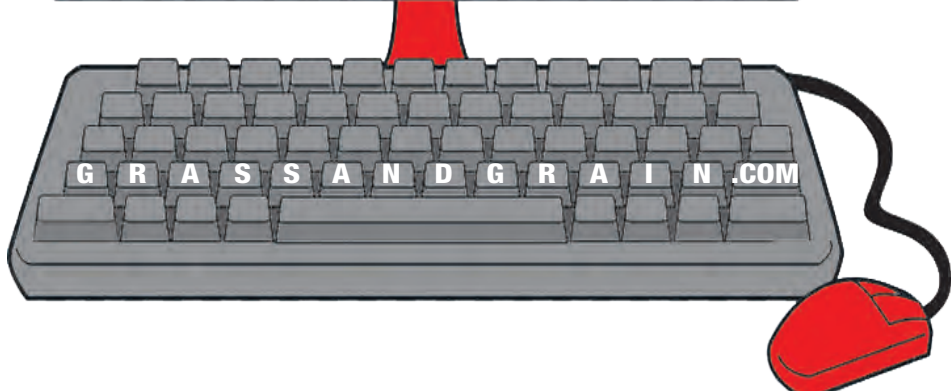
**GRASS & GRAIN**  
**ONLINE ONLY**

**1 year - \$35** *Other options also available*

Arrives in your inbox every Monday between 12-1pm  
*Email is required.*

**TO SWITCH OR SUBSCRIBE CONTACT KEVIN:**  
**CALL 785-539-7558 • EMAIL: [agpress3@agpress.com](mailto:agpress3@agpress.com)**  
**Or stop by: 1531 Yuma St., Manhattan, KS**

*\*Online edition is FREE to all Paid Mail Subscribers*



**REAL ESTATE AUCTION**  
**WEDNESDAY, MARCH 11, 2020 — 7:00 PM**

Auction will be held at the Vesper Community Center in VESPER, KANSAS

**49.34 acres in southeast corner of SE 1/4 2-14-9 Ellsworth, Kansas.**

The farm is located 1/2 mile North of Exit 216 on Interstate 70 (Vesper Exit) on a gravel road. There are 49.34 acres with 32.43 cropland acres and 16.91 acres grass & trees with 2 steel bins. The tract does not include the wind tower or the milling stock pile acres. The farm is located 1/2 mile from the interstate on a gravel road. Seller will pay 2019 and all prior year's taxes. Purchaser will pay 2020 taxes. Possession: Possession will be upon closing.

**Terms:** 10% of purchase price as down payment day of auction, the balance will be due upon closing on or before APRIL 15, 2020. Escrow fees will be split 50/50 between seller & purchaser. Title insurance will be used, the cost will be split 50/50 between seller & purchaser.

Thummel Real Estate & Auction LLC is acting as seller agent. **All statements made day of auction take precedence over printed material.**

**ALSO SAND CO., INC.**  
Auction Conducted By: **THUMMEL REAL ESTATE & AUCTION LLC**  
785-738-0067

**Never miss an issue of**

**GRASS & GRAIN**

**Subscribe or renew today!**

New Subscription \_\_\_\_\_ Renewal \_\_\_\_\_

**PROVEN PASTURE PERFORMANCE!**






**BJ Ashland 8127 (19444044)** These Ashland sons give us a lot to be excited about! Tremendous combination of CED, growth and end product merit plus super phenotype.  
CED: +11 • WW: +92 • YW: +156 • IMF Ratio: 149  
RE: 17.9 sq. in. • \$W: +89 • \$B: +203

**BJ Transformer 8111 (19444746)**  
Top 4% CED, top 2% growth and top 2% CW, +1.2 Marbling are just the highlights for this outstanding young bull out of a super All In daughter.  
CED: +14 • HP: +14.9 • MARB: +1.20  
\$W: +87 • \$B: +192

**19<sup>th</sup> Annual**  
**Spring Production Sale**  
Thursday, March 12, 2020 • 12:30 PM  
4291 McDowell Creek Road • Manhattan, Kansas

**SELLING APPROXIMATELY 140 LOTS, INCLUDING:**  
**75 18-Month-Old Bulls 20 13- to 15-Month-Old Bulls**  
**30 Fall Bred Heifers 12 Spring Pairs 2 Open Yearling Heifers**

**Value added industry leading genetics**  
**Outstanding breeding guarantee • Performance tested bulls**  
**Free delivery of bulls • Market accessibility**

LiveAuctions.TV  
Watch the sale and bid live online.

**BJ ANGUS GENETICS**  

John & Bonnie Slocombe • 4291 McDowell Creek Road • Manhattan, KS 66502  
(785) 539-4726 • John's mobile (785) 532-9777 • [john@bjangus.com](mailto:john@bjangus.com) • [www.bjangus.com](http://www.bjangus.com)

Name: \_\_\_\_\_

Address: \_\_\_\_\_

City: \_\_\_\_\_ State: \_\_\_\_\_ Zip: \_\_\_\_\_

Phone: \_\_\_\_\_

Email: \_\_\_\_\_

Activate Online Edition? \_\_\_\_\_

**\*\*Online Edition is FREE with purchase of Print Subscription; Email is required.\*\***

**In-State Print Edition Rates:**

**1 Year; \$41 + additional sales tax \_\_\_\_\_**

**2 Years; \$76 + additional sales tax \_\_\_\_\_**

**3 Years; \$105 + additional sales tax \_\_\_\_\_**

**\*\* SALES TAX DETERMINED BY COUNTY AND MUST BE INCLUDED TO RECEIVE FULL YEAR. CALL IF UNSURE.\*\***

**Out-Of-State Print Edition Rates:**

**1 Year; \$51 \_\_\_\_\_ 2 Years; \$95 \_\_\_\_\_ 3 Years; \$132 \_\_\_\_\_**

**\*\*Call for info about our 1st Class or Online Only rates\*\***

Check/Cash Enclosed: \_\_\_\_\_

or

Credit/Debit Card:  
Visa, Master Card, Discover, American Express

Expiration Date: \_\_\_\_/\_\_\_\_/\_\_\_\_

V-Code (3 digits on back of card): \_\_\_\_\_

Signature: \_\_\_\_\_

**Mail to: P.O. Box 1009, Manhattan, KS 66505**  
**OR Stop by the office: 1531 Yuma St., Manhattan, KS 66502**  
**1-877-537-3816**

# GRASS & GRAIN Our Daily Bread

\*\*\*\*\* By G&G Area Cooks \*\*\*\*\*

## Regina Wofford, Circleville, Wins Weekly Recipe Contest And Prize

Winner Regina Wofford, Circleville: "From Food & Family magazine Jello ad."

### LEMON CHICKEN

1 tablespoon oil  
1 pound boneless skinless chicken, cut up  
2 cups (16 ounces) snap peas  
1 small red pepper, cut  
1 package lemon gelatin (or orange)  
1 tablespoon cornstarch  
1/2 cup chicken broth  
2 tablespoons Italian dressing  
2 garlic cloves, minced

Brown the chicken in oil. Add peas and pepper. Cook 2 minutes. Mix gelatin and cornstarch. Add broth, dressing and garlic; stir until gelatin is dissolved. Add to skillet. Reduce heat to medium and cook 3 minutes or until sauce is thickened. Serve over hot rice. Serves: 4.

NOTE: Can add red pepper flakes to spice it up!

\*\*\*\*\*

Rose Edwards, Stillwater, Oklahoma:  
**BRUSSELS SPROUTS**  
3-4 tablespoons olive oil  
16-ounce package frozen brussels sprouts, thawed  
2 tablespoons balsamic vinegar  
1/2 teaspoon salt  
1/2 teaspoon pepper

In a large skillet heat olive oil over medium-high heat. Add thawed brussels sprouts and cook until heated through, 5-7 minutes. Transfer to a serving bowl. Drizzle with vinegar, salt and pepper.

\*\*\*\*\*

Kellee George, Shawnee:  
**CORN PUDDING**  
1/2 cup butter  
4 cups frozen corn kernels, thawed

1/2 cup chopped green onion  
1 teaspoon salt  
1 teaspoon pepper  
2 cups heavy whipping cream  
4 large eggs  
1 package Jiffy corn muffin mix

Set oven 375 degrees. Grease a 9-inch square baking dish. In a skillet melt the butter. Add corn and onion; cook until lightly browned. Remove from heat and stir in salt and pepper. In a large bowl whisk cream and eggs; whisk in muffin mix. Stir in corn mixture until combined. Spread into baking dish. Bake until toothpick inserted in center comes out clean, about 35-40 minutes.

\*\*\*\*\*

Darlene Thomas, Delphos:  
**STRAWBERRY JAM COOKIES**  
2 sticks unsalted butter, room temperature  
2/3 cup sugar  
1 large egg plus 1 egg yolk  
1 teaspoon vanilla extract  
2 1/2 cups flour  
1/2 teaspoon salt  
1/2 cup chopped almonds, pecans or hazelnuts  
1/2 cup strawberry jam

Preheat oven to 350 degrees. Line 2 baking sheets with parchment paper. In a large bowl beat butter and sugar with mixer until light and fluffy, about 3 minutes. Blend in egg and egg yolk. Stir in vanilla. In another large bowl whisk together flour and salt. Add to butter mixture and mix well. Roll dough into balls using about 1 teaspoon for each then roll in nuts. Place on prepared baking sheets and press your thumb deeply into the center of each ball. Fill indentations with jam. Bake until lightly golden, about 12 minutes. Cool cookies slightly on pans then transfer to wire racks to cool completely. Yields: about 4 dozen.

\*\*\*\*\*

Kimberly Edwards, Stillwater, Oklahoma:  
**PEANUT BUTTER CHEESECAKE DIP**  
8 ounces cream cheese  
1/2 cup sour cream  
1/2 cup confectioner's sugar  
1/2 cup creamy peanut butter  
1/2 teaspoon vanilla

Beat cream cheese until fluffy. Beat in sour cream and sugar until incorporated. Beat in peanut butter and vanilla. Serve with pretzels, veggies or cookies.

\*\*\*\*\*



## Baking With Sugarbuns

By Michele Carlyon

Carlyon. To most that means nothing; to me, it's everything. It is where my story begins. Carlyon is home, Carlyon is family, Carlyon is me.

We have all heard the saying, "Home is where the heart is," and I couldn't agree more. My parents started out in a mobile home out in the country. From there, they bought a house down the road and have been there ever since. Growing up, I would have given anything to have not been in the country and to have had a neighbor that was anywhere close to my own age. I didn't fully appreciate the beauty that was surrounding me.

I also would have given anything to not have people look at me in amazement when they realized that the road we lived on boasted our last name, "Carlyon Road." Now I realize the honor that it was to live on a road that not only bore our name, but to have family living so closely. Knowing that we grew up right next to a military base and seeing so many people come and go, I am reminded just how lucky we were to always have that home base of "Carlyon Road."

When my mom married my dad at the age of twenty-one, she became a Carlyon and I can assure you she didn't make it easy on him; he wouldn't have had it any other way. To this day, I question how they've made it work for so many years, being so incredibly different, but at the end of the day, there is one super-simple answer: love. My mom is stubborn, my dad is patient. My dad laughs at inappropriate things, my mom is always professional. My mom is short, my dad is tall. I could go on and on with their differences, but at the end of the day, the love they had created a family.

They were married in the fall of 1984 and I joined their party in the summer of 1988. Eighteen months later in the winter of 1989 came my brother Mike, and in the winter of 1992 my brother Andy

came along. From a young age, I can remember my dad being a hard worker; if it was light out, he was working. My mom has always been a very dedicated hard worker, but with three little ones, she stayed home with us for quite a few years. She was our everything, she was the person that we saw all day, every day, and she did everything she could to instill these strong family values that we have driven so deeply within us. My mom always made a point to remind us of the importance of family.

Until the past few years, I don't honestly know that I knew who I was or where I was going in this world. I am not sure that I still know where I am going, but I have come to have a much better understanding of who I am and quite frankly I have come to determine I am a lot of things. I am a daughter, a sister, an aunt, a kind old soul, an animal lover, a mother hen of sorts, creative, a writer, an adventurer, a baker, and so many other amazing things, but at the root of it all, I am a Carlyon.

My family defines me in so many ways and as I continue to navigate this journey of writing, I hope you enjoy getting to know some of these crazy characters that are so very real and have played such a huge part in my life. Some family is blood, some family is chosen, but what matters is that family is there when you need them and I can assure you, I have the absolute best family in the world.

Michele grew up in Junction City and graduated from Kansas State University. She worked in the restaurant management field for six years before deciding to switch careers and now works as an office manager for a company that manufactures oilfield products. Her passion for blogging and food can be followed on Instagram: boobbrainsand-baking

Come Shop Elsie Grace's!!

Fresh, Homemade pie by the slice, every day!

Always Free Samples of our FAMOUS FUDGE!

Need a gift basket? Call Elsie Grace's! We Ship Fudge DAILY!

Elsie Grace's  
123 N. Kansas Ave.  
Frankfort, KS  
785-292-4438

Hours:  
Mon.-Fri.: 9 a.m. - 5 p.m.  
Saturday: 1-3 p.m.  
Follow us on Facebook!

## Need Senior Insurance?

- ★ Medicare Supplement
- ★ Long Term Care
- ★ Final Expense

**800-373-9559**

**PHILLIPS INSURANCE**

Jim- The Answer Man!

## BigIron AUCTIONS

WWW.BIGIRON.COM

UNRESERVED | LIEN FREE | NO BUYER FEES

UNRESERVED ONLINE AUCTION WEDNESDAY, MARCH 11, 2020

Mark E. Collins Revocable Trust Estate  
Waverly, KS  
Steve Collins, Owner - 620-364-9383  
Bob Eichenberger, Sales Rep - 785-229-5892

Items Pictured: 2000 Peterbilt 379, 2005 Ag-Chem TerraGator 8104 Terra-Shift Floater W/New Leader L3020XP Spreader and 2000 Kenworth T800 Tri/A Dump Truck.

Also Listed: 2006 Ag-Chem TerraGator 8104 Terra Shift Floater W/New Leader L3020XP Stainless Steel Spreader Box, 2000 Kenworth T800 Tri/A Dump Truck, 2008 Fontaine Infinity SX 48' Spread Axle Aluminum Drop Deck Trailer, 2000 Ag-Chem Terra Gator 8104 Terra-Shift Sprayer Floater, 2010 John Deere 624K Wheel Loader and many more items!

Visit [www.bigiron.com](http://www.bigiron.com) for details and complete listings!

Sell your equipment on BigIron.com - Call today!  
**1-800-937-3558**

## Prize for MARCH 2020! "Our Daily Bread" Recipe Contest Prize

### Set of 2 Cookie or Cracker Keepers

Features air-tight lids and sized just right to prevent the contents from sliding around and getting crushed.

- Made of polypropylene
- Dishwasher, microwave & freezer-safe

Set of 2 includes: round container with lid, 4 3/4 inches wide x 2 1/2 inches deep x 4 3/4 inches high; rectangular container with lid, 5 1/4 inches wide x 3 inches deep x 5 5/8 inches high.

The winner each week is selected from the recipes printed. Send us your favorite recipe. It may be a main dish, leftover, salad, side dish, dessert, or what-have-you.

1. Check your recipe carefully to make certain all ingredients are accurate and instructions are clear. 2. Be sure your name, address and phone number are on the entry. Please include a street address with your recipe entries. A post office box number is not sufficient for prize delivery. Allow 3-4 weeks for delivery.

3. Send it to: Woman's Page Editor, Grass & Grain, Box 1009, Manhattan, KS 66505. OR e-mail at: [auctions@agpress.com](mailto:auctions@agpress.com)

## Downsizing Programs To Be Held

By Deanna Turner, Extension Agent: Family & Consumer Sciences, Aging Programs, River Valley Extension District

Make your life easier by decluttering. Clutter can have negative effects on your mental and physical health. Plan to attend the upcoming program, Downsizing, on March 12 and 13 in the K-State Research and Extension River Valley District counties of Clay, Cloud, Republic and Washington.

March 12, hear the program starting at 10:00 a.m. in the Clay Center District Office (322 Grant Avenue). That afternoon, catch the program in Washington at 2:00 p.m. in the Good Shepherd's Lutheran Church (200 W. 4th Street). On March 13, come to the Belleville Public Library (1327 19th Street) for the program at 10:00 a.m. That afternoon you can hear the program at the Concordia Courthouse Basement Meeting Room (811 Washington) at 2:00 p.m. In Concordia, please park on the south side of the Courthouse, enter on the west side of the Courthouse and take the elevator to the basement.

Deanna Turner, District Extension Agent-Adult Development and Aging, will discuss different methods of downsizing to enjoy the space you are living without the clutter. If you plan to attend, please pre-register at your local Extension Office by calling: Clay Center Office at 785-632-5335, Washington Office at 785-325-2121, Belleville Office at 785-527-5084, Concordia Office at 785-243-8185. For more information, call Deanna at 785-632-5335. Everyone invited to this free program.

## LAND AUCTION

SATURDAY, MARCH 14, 2020 — 10:00 AM

Helvering Center — MARYSVILLE, KANSAS

**121.6± ACRES MARSHALL COUNTY LAND**

Combination of 97+ acres of cropland, excellent wildlife habitat and is located on an excellent county-maintained road with easy access to Highway 36.

**NICK & JENNIFER KELLER, SELLERS**

See February 18 Grass & Grain For Complete Details. For a VIRTUAL TOUR of this property visit [www.MidwestLandandHome.com](http://www.MidwestLandandHome.com)

To stay up to date on auctions and listings LIKE our Facebook page Midwest Land and Home.

**Midwest Land and Home**

Jeff Dankenbring - Listing Broker - 785.562.8386  
Mark Uhlik - Broker/Auctioneer - 785.325.2740  
[www.MidwestLandandHome.com](http://www.MidwestLandandHome.com)  
When you want the Best, Call Midwest!

## BENNINGTON GUN STORE

### Schur Firearm Sales, LLC

Family Owned Repair & Special Orders Class 3 Dealer

RUG AR-556 5.56 SA RFL 16B

GREAT HOLIDAY

**PRICE \$615**

• PERMANENT STORE HOURS •  
Wed., 4-7:30pm • Tues. - Thurs. - Fri. 10-6pm • Sat., 10-3pm

[www.gunstores.net/259983](http://www.gunstores.net/259983)  
785-201-5090 • 104 NORTH NELSON, • BENNINGTON, KS

## Kansas POWERTRAIN & EQUIPMENT LLC

785-861-7034

1534 NW TYLER TOPEKA, KANSAS

Your Parts & Service  
Headquarters for 10 years

Complete Drivetrain Specialists • Drive Shafts  
Rear Ends and Heavy Duty Parts

## BARN BUILDERS DT CONSTRUCTION

918-527-0117

Free Estimates! All Workers Insured Est. 1977

One Year Warranty

30x50x10 enclosed ..... Galvalume \$9,100  
12' slider, 1 walk door...Colored metal \$10,100  
40x60x14 enclosed  
2 12' sliding doors ..... Galvalume \$16,100  
1 walk door .....Colored metal \$17,500  
40x100x16 enclosed  
20' split sliding door..... Galvalume \$24,600  
1 walk door .....Colored metal \$26,600

Price includes labor and material.

[www.DTCBarns.com](http://www.DTCBarns.com)

## LAND AUCTION

SATURDAY, MARCH 28, 2020 — 2:00 PM

American Legion — CUBA, KANSAS

**59.2± ACRES REPUBLIC COUNTY LAND**

Legal Description: (Republic Co. Appraiser)  
S10, T03, R01W, ACRES 59.2, S1/2 NW1/4 SW1/4 & SW1/4 SW1/4

FSA Details: • 58.50 Farmland Acres • 57.36 DCP Cropland Acres  
• 56.0 Total Base Acres ( 28.19 acres Wheat, 27.61 acres PLC Yields 34 Wheat & 29 Beans  
2018 Real Estate Taxes: \$1266.33

Location:  
• From Intersection of 260th & Penn Road at the Southwest Edge of Cuba go East on Penn Road 2 miles. Property is located on the North side of Penn Road starting at 280th Road.  
• From Highway 36 & 310th Road (County Line) go South 1 mile to Penn Road then West 2.75 miles on Penn Road.  
Property is located on the North side of Penn Road.

Listing Broker's Notes: This property would make the perfect addition for Producers & Investors. This farm is predominately Crete Silt Loam & Crete Silty Clay Loam Soil types and is considered PRIME cropland and is currently 96% in crop production. Don't miss this GREAT OPPORTUNITY to add these HIGH QUALITY acres to your operation or investment portfolio. Contact me with questions you have regarding this AWESOME Republic County Kansas property. Jeff Dankenbring, Broker - Cell: 785.562.8386 or Email: [Jeff@MidwestLandandHome.com](mailto:Jeff@MidwestLandandHome.com)

Terms & Possession: 10% down day of the sale, balance due at closing on or before April 28, 2020. Sellers to pay 2019 and prior years property taxes. Title insurance, escrow & closing costs to be split equally between buyer and seller. Buyer takes possession at closing. Property to be sold as-is, where-is. All inspections should be made prior to the day of the sale. This is a cash sale and is not subject to financing, have your financing arrangements made prior to auction. Midwest Land and Home is acting as a Seller's Agent and represents the seller's interest. All information has come from reliable sources; however, potential buyers are encouraged to verify all information independently. Statements made the day of sale take precedence over all other printed materials.

**LEE KING & SHERRY MCCUNE, SELLERS**

For a VIRTUAL TOUR of this property visit [www.MidwestLandandHome.com](http://www.MidwestLandandHome.com)

To stay up to date on auctions and listings LIKE our Facebook page Midwest Land and Home.

**Midwest Land and Home**

Jeff Dankenbring - Listing Broker - 785.562.8386  
Mark Uhlik - Broker/Auctioneer - 785.325.2740  
[www.MidwestLandandHome.com](http://www.MidwestLandandHome.com)  
When you want the Best, Call Midwest!

# Spice It Up: Adding More Flavor To Meal Prep

By Tyler Johnson, Expanded Food & Nutrition Education Program Agent, Wildcat Extension District

Do you want to add more flavor to your food? If you are one of many people who like different flavorful foods, but are not sure how to make them yourself, this article should help. There are many ways you can add more flavor to your favorite foods. One of the quickest and easiest ways is to change the spices you put in the meal. For example, if your French Toast is becoming too routine, try adding some cinnamon or nutmeg to the batter.

smaller amounts. After a while, spices get stale and you will need to add more spice to get the same flavor.

**Spices to keep on hand**  
Spices are like any cooking ingredient. There are certain spices you should have on hand. Since they are in many frequently made dishes, some experts recommend you keep the following spices in your kitchen; black pepper, chili, cinnamon sticks, chili flakes, chili powder, cumin, ginger, nutmeg, paprika or smoked paprika, oregano, and bay leaves. In addition to these spices, I would add mint, parsley, rosemary, and thyme.

**Storing spice**  
There are some tips to helping your spices last longer. In addition to purchasing whole spices, the way you store your spices is another key to how long they will last. Depending on the spice and its freshness the storage may change. For example, if you have living spices, like parsley sprigs, you should keep them where they will continue to grow and thrive. For most of your dry spices, store them in a glass jar with a well fitted lid. Place the jar in a dry, cool, dark place.

**Testing Spices**  
If you have stored spices for a while and are not sure if they are still good, you can always 'test' them. The easiest way to see if a spice is still good is to smell it. The fresher the spice the more intense the smell. If a spice does not smell very good it is probably too old. If it smells musty, you should consider throwing it out.

Please contact me to schedule an appointment or for more information, contact Tyler Johnson, tajohnson120@ksu.edu, or by calling 620-232-1930.



Home and Away

## Animals Are Great Teachers

By Lou Ann Thomas

My pets appear to believe I'm a trainable human being. I say this because the cats and one dog with which I share my house are constantly trying to teach me new things.

For instance, my cat Dancer is showing me how to relax. I mean really relax, to the point of turning into liquid. No matter what is going on around her, if Dancer is in the mood for a nap, she will take a nap. It doesn't matter if the stereo is blaring, the television is reporting destruction or emergency routes out of the city are being broadcast. If Dancer needs a rest, Dancer rests.

Petey and Miss Piff have enormous capacities for denial, and they are teaching me that that's not always a bad thing. When Boone, or any of his canine friends, approaches either of them, they simply ignore them. They have no need to hiss or run because to them, dogs simply don't exist.

As my protector, Boone teaches me about loyalty and the importance of looking out for those we love. Boone insists on sleeping between me and the door, especially when we travel. If there is something out there that wants to come in, he's very clear it is not going to hap-

pen. Not on his watch, he says. No way.

Boone also teaches me about love. He accepts love very graciously without feeling as though he must somehow repay me for it. He even asks for love without apologizing or feeling any weakness in the need or desire of it.

Boone is also the best personal trainer I've ever known. He loves walks and gets me out for a good trek every day.

Because Boone is a car chaser, I have to keep him on leash so I tie his leash to an old belt I attach around my waist and he runs ahead of me, keeping me moving at a good pace.

The other night we were walking along at a good clip but Boone kept pulling me faster and faster until we were both sprinting at a good heart-thumping pace. As we moved, I thought, "Wow, Boone is really giving me a good workout tonight." That's when

I realized our speed had nothing to do with me, or working out, but instead was because a car had pulled out of a side road, turned and headed down the road ahead of us. We were no longer just running, but rather we were now chasing a car.

That's right, Boone is teaching me how to chase cars. I guess that might be a valuable skill to have, I'm just not sure what I'll do if I ever catch one.

**CENTRAL KANSAS AG AVIATION**

Call for all your Spring spraying needs!

**STEVE DONOVAN**

Cellular: 785-366-0513 • Office: 785-258-3649

# THE WAIT IS OVER!

Volume 7 of the Grass & Grain "Our Daily Bread" cookbook is finally here!!



Picking up where we left off, you can now enjoy a compilation of nearly 80 pages of unique & delicious recipes from "Our Daily Bread" circa 2014, including a few home recipes from the G&G staff!

**Stop by and get yours or call in & place a mail order today!**

**\$15/ea., + \$3 shipping to U.S.**

Earlier editions also still available!

**GRASS & GRAIN**

785-539-7558  
1531 Yuma St • Manhattan, KS

**Building Solutions You Can Trust**

"Experience the Difference"

**Pre-Engineered Wood Frame Metal Buildings**

Check us out online  
or  
Call us today for a FREE ESTIMATE!  
**Your Building. Your Dream. Your Way.**

**K-Construction Inc.**

Alta Vista, KS  
**785-499-5296**  
www.k-constructioninc.com

A Complete Cattle Feeding & Marketing Service

# TIFFANY CATTLE CO., INC.

Family Owned & Operated

Tiffany Cattle Company, with a total capacity of 32,000 head, is equipped to offer economies of scale and industry leading service to customers of any size.

**Production Services**

Objective is simply: Least Cost Per Pound of Gain!  
Ration formulation and cost analysis, health program designed and maintained by veterinarian, special pens and attention to sick animals, feed financing and cattle purchasing available.

**Marketing Services**

Marketing finished cattle is top priority at Tiffany Cattle Company. You have the option of selling on the cash market, forward contracting or grid pricing through multiple Kansas packers.

★ [www.tiffanycattle.com](http://www.tiffanycattle.com) ★

Follow us on at Tiffany Cattle Company

Tiffany Cattle Company 1333 S. 2500 Road Herington, KS 67449 (785) 258-3721	Tiffany Cattle West 758 Pioneer Road Marquette, KS 67464 (785) 546-2216	Shawn Tiffany - COO (785) 229-2902 shawn@tiffanycattle.com Shane Tiffany - CEO (785) 466-6529 shane@tiffanycattle.com Dennis Roddy - CFO (620) 767-2139 dennis@tiffanycattle.com Tanner Stucky - Asst. Mgr. (620) 214-0979 tanner@tiffanycattle.com
--	--	--

Need an extra copy of  
**GRASS & GRAIN?**

Pick one up at any of our Box locations:

**Dara's Fast Lane:**

- 5321 Tuttle Creek Blvd, **Manhattan, KS** -
- 8811 US-24, **Manhattan, KS** -
- 1132 Pillsbury Dr., **Manhattan, KS** -

**Sharp's:**

- 118 W. Randolph St., **Randolph, KS** -

**The Store:**

- 104 E Barton Rd., **Leonardville, KS** -

Copies are also available at these businesses:

- Bluestem Farm & Ranch:** - 2611 W. Hwy 50, **Emporia, KS** -
- Pioneer Farm & Ranch:** - 427 NE 14th **Abilene, KS** -

Or Stop by the Grass & Grain Office:

- 1531 Yuma St., **Manhattan, KS** -

**Office Hours:** Monday-Friday, 8am-5pm

"Alexa, turn on KFRM"

"The Voice of the Plains"

# KFRM 550 AM

Streaming 24-7  
Download the KFRM App and Listen Anytime, Anywhere!



# FARM & BUILDING EDITION 2020

## Things to consider when erecting a new building

Who should you hire to build your new building? This is the question that anyone looking to build a new post frame should do their homework on. Whether you are building that new she-shed, man-cave, house, garage, hobby

shop or horse barn, you need to ensure that you are hiring the right contractor for the job. Some good questions to get answers to would be... Does your business have a storefront? Are you licensed and insured to work in my

area? Do you have builders risk insurance to cover my building until its complete and on my insurance plan? Do you offer a pre-engineered building? Will I get the same building practices that a customer would in Johnson

or Miami county? Do you have a few buildings in my area that I could look at and speak with the homeowners about their building and their experience doing business with you?

These are questions that anyone buying a new building should be sure to get the answers to. It is important to invest your hard-earned money into a structure that will stand the test of time. It is a must to purchase your new building from a company that invests in their industry. The Post Frame industry association is called the NFBA "Nation-

al Frame Builders Association." The NFBA has an Accredited Builder Program that holds their Builders to higher standards. Below is a summary from the NFBA regarding what it takes to be an Accredited Builder. QSI, Quality Structures is and has held the Accredited Builder status for several years along with a few other reputable Kansas companies.

**NFBA Accredited Post-Frame Builder Program**  
NFBA created the Accredited Post-Frame Builder Program to recognize exceptional post-

frame builders and their commitment to professionalism, as evidenced in key areas of corporate responsibility. Accredited Post-Frame Builders demonstrate that they are good corporate citizens by putting in place policies and programs that ensure quality and customer satisfaction.

To qualify for Accreditation, applicants must attend at least 12 hours of post-frame industry specific continuing education at the NFBA's Annual Conference and Expo, or at NFBA Chapter events. Ac-

• Cont. on page 7



TOP OF THE LINE FULLY CUSTOMIZABLE STEEL BUILDINGS

From Recreational Steel Buildings To Metal Storage Sheds, We Do It All And We Do It Well!



DON'T MISS OUT ON OUR SPECIAL 50' X 100' X 16' PRICE!  
[www.toplinebuildings.com](http://www.toplinebuildings.com)

Contact Us Today:  
(316) 500-6264

### Building Special

- 40'X60'X14' Red Iron Building
- 2:12 Pitch
- 26ga Painted "R" Panel on Roof and Walls
- 2 - 12'X12' Framed Openings
- DOES NOT INCLUDE OH DOORS
- 1 Passage Door
- Engineer Stamped
- IBC 2012
- 115mph Wind Load
- 20psf Ground Snow Load

**MATERIALS ONLY**

**\$15,375.00** Plus tax & freight

\* Price Subject to Change Without Notice



	<b>Showroom &amp; Sales Office</b> Bolivar, Missouri 65613 <b>(417) 326-4228</b> Next to Smith's Restaurant Hwy. 13 & U	<b>Corporate Office</b> Polk, Missouri 65727 <b>(417) 852-4228</b> 2 Miles South of Pittsburg on Hwy. 64
	<p>Find us on  <b>facebook</b> <b>VISIT US @ JENKINSBUILDINGS.COM</b></p>	

## Morton Standard

Morton Quality. Classic Designs. Affordable Price.



**GARAGES | GENERAL PURPOSE | HOBBY SHOPS | MACHINE STORAGE**

It's simple. You need a basic building to keep your prized possessions under one roof. A classic design, without all the frills. Choices, but not too many decisions. A building to stand the test of time.

**Introducing the Morton Standard**  
Affordable buildings with our most popular sizes and options, and the Morton quality you expect.

From our materials, to our craftsmanship, to our best-in-class warranty, it's the standard for post-frame buildings. **The Morton Standard.**

Learn more at your local sales office  
**785-823-6359**  
Salina, KS



Available for construction projects in the state of Kansas only. Certain restrictions may apply. ©2020 Morton Buildings, Inc. All rights reserved. A listing of GC licenses available at [mortonbuildings.com/licenses](http://mortonbuildings.com/licenses)

[mortonbuildings.com/MortonStandard](http://mortonbuildings.com/MortonStandard)

# Topline Steel Buildings is family-owned 100% American-made metal buildings business

Topline Steel Buildings provides quality work made from 100% American steel. From commercial metal buildings to

metal farm buildings, from recreational steel buildings to metal storage sheds, they do it all and they do it well. Over the

years, they've earned our reputation as a premium provider of custom-made metal buildings.

While their home is in

the heartland, they ship worldwide. Their business began with small jobs for Kansas farmers. Today, they build international-

ly for individuals, businesses, and governments. They still take great care of their good friends here in Kansas; and now, they

offer the same detailed attention and conscientious customer service to the entire nation.

## Things to consider when erecting a new building

• Cont. from page 6  
 Credited builders pledge to abide by the NFBA Code of Ethics and the Accredited Post-Frame Builder's Pledge:

"We are proud to be post-frame builders and an integral part of this great industry. As industry professionals, we want our customers and the general public to know that we care about industry standards, quality workmanship, safety and ethical business practices. We want our communities to know that we are

dedicated to honesty and customer satisfaction, and that we are committed to providing quality service to our customers, now and in the future. We are prepared to demonstrate this commitment through our actions and maintenance of Accredited Post-Frame Builder status."

Accredited Post-Frame Builders also sign a notarized affidavit declaring that they:

exercise integrity in all business transactions, and stand behind their work attempt to satisfy every

customer by any means reasonable

comply with NFBA's post-frame industry building standards

adhere to state and local building codes

carry general liability insurance

have a written safety program

comply with state laws concerning workers' compensation coverage

notify all customers of builder's risk insurance requirements

For more information about Accreditation,

please call NFBA headquarters at 800/557-6957 or visit "http://www.nfba.org" www.nfba.org.

We hope that you take

our advice and do your homework before choosing a company to build your new Post Frame Building. For more information regarding QSI log

onto "http://www.qualitystructures.com" www.qualitystructures.com or call 785-835-6100.

Even Sideways GRASS & GRAIN can take care of all your advertising needs!

**GO GREEN!**



**CRITCHFIELD SPRAYFOAM INSULATION**

CERTIFIED PROFESSIONAL

Residential • Commercial • Agricultural  
 Now offering concrete lifting!

**Mark Critchfield**  
 785-363-2057 OR 785-556-8086  
 critchfieldsprayfoam@yahoo.com

**KANSAS SPRAY FOAM INSULATION**

Residential - Commercial - Agricultural - Industrial  
 Kansas & Missouri



ATTIC & CEILING INSULATION  
 BASEMENT & RIM JOIST INSULATION  
 CRAWLSPACE INSULATION  
 GARAGE INSULATION  
 POLE BARN & METAL BUILDINGS  
 AGRICULTURAL & LIVESTOCK

Contact Kansas Spray Foam Insulation, LLC

Call today for a FREE estimate (785) 331-3626  
 GetQuote@KsSprayFoamInsulation.com  
 KsSprayFoamInsulation.com

**MARCH SPECIALS AND OPEN HOUSE SLAM DUNK SAVINGS!**

Garages | Hobby Shops | Agricultural | Equestrian | Commercial

**QSI** **\$1.00 OFF** Per Sq. Ft. Of **YOUR BUILDING PRICE!**

Quality Structures  
 800-374-6988  
 qualitystructures.com

\*Offer Good March 1st-31st, 2020

Purchase a building before March 14th for an additional \$300 off!



Purchase a building in MARCH for a chance to win an American Landmaster Landstar™ 550 4x4 Utility Vehicle!\*\*\*

**MSRP \$7,750**

AMERICAN LANDMASTER LANDSTAR

\*Cannot be combined with any other offers.  
 \*\*Offer good 3/1/2020 - 3/31/2020.  
 \*\*\*The minimum purchase amount to enter the drawing is \$20,000. Delivery of the UTV is after completion and full final payment of your building.

**Open House Dates & Locations:**

Haven Office - 620-465-2785 303 S. Kansas, Haven, KS  
 Richmond Office - 785-835-6100 167 Hwy 59, Richmond, KS

Thursday, March 12, 2020 - 8:00 am to 5:00 pm  
 Friday, March 13, 2020 - 8:00 am to 5:00 pm  
 Saturday, March 14, 2020 - 8:00 am to 5:00 pm

ALL-STEEL EXPERTS

**Agriculture. Commercial. Equestrian. Self-Storage.**

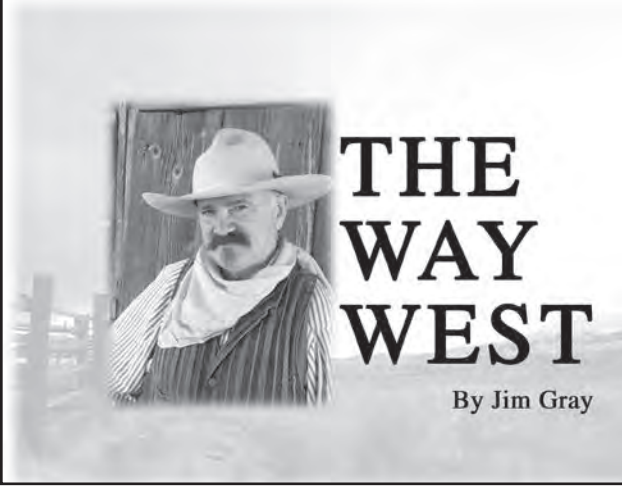


You'll live with your building choice for a long time. Get the facts first.

**HALL CONTRACTING**  
 785-404-1830  
 1416 W. North St. • Salina, KS 67401

**AGI SENTINEL** **hall CONTRACTING**

AGRICULTURAL • RESIDENTIAL • COMMERCIAL CONSTRUCTION



# THE WAY WEST

By Jim Gray

## Saving Kansas

The *Emporia News* of March 6, 1868, headlined a story entitled *The Candle-Box Under the Woodpile - How it was Discovered*. The story of the candle box is one that is relatively unknown but one that all Kansans should know, as that box figured prominently in the course that our state would take in accepting or denying slavery. In September of 1857 the slave-owning territorial legislature met in Le-

compton to produce a state constitution. Territorial Governor Robert J. Walker, a proponent of slavery, had nonetheless declared his intention to fairly place the Lecompton Constitution before the people of Kansas for ratification or rejection. The President of the Lecompton Constitutional Convention, John C. Calhoun, readily recognized that he and his pro-slavery constituents were in the

minority. The alarm was sounded. It was "the South against Walker." The January 1858 election was rife with fraud. The "free use of the Cincinnati Directory," presented the names of Cincinnati residents as legal Kansas voters. Walker recognized the fraud and refused to accept the returns.

The proponents of the Lecompton Constitution tried to sidetrack credibility by declaring Calhoun the sole authority in the issuance of certificates of election. The Lecompton Constitution enjoyed the support of U. S. President James Buchanan and might well have been accepted had it not been for an outcry for justice from some of the President's closest confidants. Even so, many of the men who joined forces to defeat the pro-slavery constitution incurred the ill will of influential leaders. George Crawford penned the "Candle Box" article in the *Emporia News*. Crawford, the founder of the city of Fort Scott, wrote that

while living in Lecompton he was threatened with "a polite note of invitation to leave the State, and something added about being a 'dead man by twelve o'clock'." George lodged with William and Emily Brindle along with several men from Pennsylvania. Brindle, a veteran of the Mexican War, "was intense in zeal... He never went on the streets without his brace of revolvers." Mrs. Brindle was known as "Joan of Arc" to the little group of conspirators who had pledged to derail Calhoun and his pro-slavery associates.

The fight over the Lecompton Constitution was taken to the "Halls of Congress" in Washington where, as Crawford put it, Senator Stephen A. Douglas "made himself immortal in the championship of Kansas." The charge of fraud was declared and denied. "Nothing but the exposure of these frauds, shocking the moral sense of the nation... could give victory to the people. The exposure "would save Kansas to freedom."

In Kansas, the Territorial Legislature instituted an investigation. Calhoun fled to Missouri. At a dance in the Eldridge House in Lawrence, L.A. McLean, the chief clerk of the constitutional conven-

tion, was questioned about the whereabouts of the election returns. McLean calmly announced that Calhoun had taken them to Missouri. The music played on, and McLean enjoyed his evening as though he had not a care in the world.

But all was not as it seemed. Charley Torry, an elderly Dutchman tended to menial tasks for Calhoun. "Dutch Charley" appeared to be a simple man. "He seemed to have no higher ambition... than to draw his pay, poke about the fires, and smoke his pipe." Little did Calhoun or McLean suspect that Charley was passing information to William Brindle.

Dutch Charley knew what had really happened to the returns. He and Brindle drew up a map and relayed the information to Sheriff Samuel Walker, no relation to Governor Walker. Having done his work Charley returned to his room in the surveyor's office. Sheriff Walker arrived the next morning with a posse of several of "the boys."

When the sheriff announced that he had come for the returns McLean once again stated that the returns were in Missouri. Sheriff Walker told McLean that he knew where they were. "Where?"

asked McLean. The sheriff responded, "Under the woodpile!" McLean "suddenly grew pale." Seventeen of McLean's employees seized their guns to make a stand until they discovered that their weapons had been disarmed. Dutch Charley had removed the firing caps from every gun the night before.

With the map in hand Sheriff Walker went to the woodpile. Brindle's party and the sheriff's posse took down the stacked firewood and began digging at the location marked on the map. At a depth of eight inches they struck a wooden box. The box that had once held a shipment of candles was filled with hundreds of forged pro-slavery votes that ultimately doomed the pro-slavery movement and saved Kansas for freedom.

Dutch Charley Torry's role in saving Kansas remained unknown for ten years until George Crawford revealed his role in the discovery of the candle-box in the woodpile on The Way West.

"The Cowboy," Jim Gray is author of the book *Desperate Seed: Ellsworth Kansas on the Violent Frontier*, *Ellsworth, KS*. Contact Kansas Cowboy, 220 21st RD Geneseo, KS Phone 785-531-2058 or [kansascowboy@kans.com](http://kansascowboy@kans.com).

# Advantage Series Overhead Feed Bins

Patent Pending! No. 29/694.456

20% more storage than a round bin, better clean-out than a square!

More space! Better clean-out!



[www.fcsmf.com](http://www.fcsmf.com) • (620) 427-4200  
FCS Mfg. Inc • Gridley, KS

**HAYDEN OUTDOORS**  
REAL ESTATE  
THE BRAND THAT SELLS THE Land™

**SETH STONE**  
SALESPERSON LICENSED IN KS & NE  
CELL: (785) 341-1630  
EMAIL: [Sstone@HaydenOutdoors.com](mailto:Sstone@HaydenOutdoors.com)

Place your Classified Ad Online

[www.grassandgrain.com](http://www.grassandgrain.com)

10<sup>th</sup> Annual **PREDICTABLE GENETICS PROVEN PERFORMANCE**

Shorthorn & Angus/Red Angus Composite  
55 Bulls and 25 Open Heifers  
Selling March 7, 2020, Pawnee Rock, KS

GrowSafe Tested and GGP50K Enhanced EPDs.

**DVAuction**  
Broadcasting Real-Time Auctions

**LOVING FARMS**

LovingFarms.com  
Marty: 620.786.2018  
Scott: 620.786.1369  
Email [scott@lovingfarms.com](mailto:scott@lovingfarms.com) for catalog.

# Annual Production Sale

SATURDAY, MARCH 14, 2020

576 E 1260 ROAD BALDWIN CITY, KS 66006 5:30 PM CST

<p><b>MAY-WAY 316 901</b></p> <table border="1"> <tr><th>CE</th><th>BW</th><th>WW</th><th>YW</th><th>SB</th></tr> <tr><td>+7</td><td>+1.7</td><td>+84</td><td>+148</td><td>+\$182</td></tr> </table> <p>SIRE: 316 MGS: BLACK GRANITE</p>	CE	BW	WW	YW	SB	+7	+1.7	+84	+148	+\$182	<p><b>MAY-WAY 316 922</b></p> <table border="1"> <tr><th>CE</th><th>BW</th><th>WW</th><th>YW</th><th>SB</th></tr> <tr><td>+12</td><td>-1.5</td><td>+61</td><td>+107</td><td>+\$134</td></tr> </table> <p>SIRE: 316 MGS: MAY-WAY PERFECTION</p>	CE	BW	WW	YW	SB	+12	-1.5	+61	+107	+\$134	<p><b>MAY-WAY OFFROAD 934</b></p> <table border="1"> <tr><th>CE</th><th>BW</th><th>WW</th><th>YW</th><th>SB</th></tr> <tr><td>+3</td><td>+2.8</td><td>+68</td><td>+125</td><td>+\$164</td></tr> </table> <p>SIRE: MAY-WAY OFFROAD MGS: INSIGHT</p>	CE	BW	WW	YW	SB	+3	+2.8	+68	+125	+\$164
CE	BW	WW	YW	SB																												
+7	+1.7	+84	+148	+\$182																												
CE	BW	WW	YW	SB																												
+12	-1.5	+61	+107	+\$134																												
CE	BW	WW	YW	SB																												
+3	+2.8	+68	+125	+\$164																												
<p><b>MAY-WAY HOMEGROWN 1808</b></p> <table border="1"> <tr><th>CE</th><th>BW</th><th>WW</th><th>YW</th><th>SB</th></tr> <tr><td>+10</td><td>-2.0</td><td>+59</td><td>+110</td><td>+\$139</td></tr> </table> <p>SIRE: HOMEGROWN MGS: GAVEL</p>	CE	BW	WW	YW	SB	+10	-2.0	+59	+110	+\$139	<p><b>MAY-WAY ACCLAIM 1847</b></p> <table border="1"> <tr><th>CE</th><th>BW</th><th>WW</th><th>YW</th><th>SB</th></tr> <tr><td>+6</td><td>+0.2</td><td>+70</td><td>+142</td><td>+\$185</td></tr> </table> <p>SIRE: ACCLAIM MGS: APOLLO</p>	CE	BW	WW	YW	SB	+6	+0.2	+70	+142	+\$185	<p><b>MAY-WAY UNANIMOUS 1824</b></p> <table border="1"> <tr><th>CE</th><th>BW</th><th>WW</th><th>YW</th><th>SB</th></tr> <tr><td>-3</td><td>+2.9</td><td>+82</td><td>+150</td><td>+\$162</td></tr> </table> <p>SIRE: UNANIMOUS MGS: PIONEER</p>	CE	BW	WW	YW	SB	-3	+2.9	+82	+150	+\$162
CE	BW	WW	YW	SB																												
+10	-2.0	+59	+110	+\$139																												
CE	BW	WW	YW	SB																												
+6	+0.2	+70	+142	+\$185																												
CE	BW	WW	YW	SB																												
-3	+2.9	+82	+150	+\$162																												
<p><b>MAY-WAY OFFROAD 933</b></p> <table border="1"> <tr><th>CE</th><th>BW</th><th>WW</th><th>YW</th><th>SB</th></tr> <tr><td>+10</td><td>+0.4</td><td>+69</td><td>+120</td><td>+\$156</td></tr> </table> <p>SIRE: MAY-WAY OFFROAD MGS: CASH</p>	CE	BW	WW	YW	SB	+10	+0.4	+69	+120	+\$156	<p><b>MAY-WAY EQUITY 1813</b></p> <table border="1"> <tr><th>CE</th><th>BW</th><th>WW</th><th>YW</th><th>SB</th></tr> <tr><td>-1</td><td>+3.8</td><td>+86</td><td>+148</td><td>+\$152</td></tr> </table> <p>SIRE: MAY-WAY EQUITY MGS: MAY-WAY PERFECTION</p>	CE	BW	WW	YW	SB	-1	+3.8	+86	+148	+\$152	<p><b>MAY-WAY PERFECTION 923</b></p> <table border="1"> <tr><th>CE</th><th>BW</th><th>WW</th><th>YW</th><th>SB</th></tr> <tr><td>+13</td><td>-0.3</td><td>+64</td><td>+111</td><td>+\$120</td></tr> </table> <p>SIRE: MAY-WAY PERFECTION MGS: MAY-WAY EQUITY</p>	CE	BW	WW	YW	SB	+13	-0.3	+64	+111	+\$120
CE	BW	WW	YW	SB																												
+10	+0.4	+69	+120	+\$156																												
CE	BW	WW	YW	SB																												
-1	+3.8	+86	+148	+\$152																												
CE	BW	WW	YW	SB																												
+13	-0.3	+64	+111	+\$120																												

Selling 50 head of 2 yr old & 1/2 mo old bulls  
Selling 15 head long yearling bulls

Offering bulls sired by: Homegrown, 316, Prime Cut, Acclaim, Offroad, Southern Charm, Equity, Perfection, Unanimous

**May-Way FARMS**

Jason Flory 785.979.2183    Kenzie Flory 785.840.7357    Office 785.594.3125    1162 N 550 Road Baldwin City, KS 66006

[www.maywayfarms.com](http://www.maywayfarms.com)

Be sure to visit our website & Facebook page for sale updates and to request a catalog!!

**MOLITOR ANGUS RANCH**  
41st Annual Production Sale  
SELLING 110 BULLS & 40 FEMALES

Saturday, March 21, 2020 @ 1 p.m. at the Ranch  
5 miles north and 2 1/2 west of Zenda, KS or 9 miles west, 9 miles south and 2 1/2 west of Kingman, KS

Molitor Angus Ranch is a family owned operation located in south-central Kansas. "A National Award winning CAB Quality Angus Seedstock Ranch (2014)". Excelling in performance, calving ease and gentle dispositions. Through the careful genetic selection of A-1 and pasture sires, we produce a distinctive group of bulls and heifers that honor the lengthy tradition of the Angus breed.

68 years of Breeding Quality Angus Cattle ♣ 1952 -2020

<p><b>Molitor 165 Paywht 4012-299</b> Reg # 19624020 Sire: Molitor Paywht 3015-165 MGS: LD Embazon 999 BW +1.1W +7.3 YW +127 Mik +31 Marb +50 RE +36 SB +143</p>	<p><b>Molitor Flat Top 721-069</b> Reg # 19627123 Sire: Werner Flat Top 4136 MGS: Basin Paywht 1692 BW -1.8 WW +87 YW +127 Mik +45 Marb +69 RE +65 SB +140</p>	<p><b>Molitor Compass 761-1049</b> Reg # 19627167 Sire: Baldrige Compass C041 MGS: Haynes Outright 452 BW -5 WW +70 YW +124 Mik +23 Marb +61 RE +68 SB +143</p>	<p><b>Molitor 4886 Raise 476-449</b> Reg # 19627048 Sire: ICC Pay Raise 4886 MGS: KG Solution 0018 BW -1.6 WW +58 YW +102 Mik +26 Marb +21 RE +36 SB +103</p>
--	--	---	---

Male Service Sires:  
Werner Flat Top 4136-8 sons  
Baldrige Compass C041-8 sons  
Banslow Bankroll 873-8 sons  
HA Outside 3878-10 sons

Other Service Sires:  
HARB Playboy 581 JH-10 sons  
Molitor KG Solution 9736-574-9 sons  
Bluegrass Aviator 712-8 sons  
ICC Payraise 4886-7 sons  
Molitor Paywht 3015-165-6 sons  
LD Bankroll 704-5 sons  
BPP Bankroll 731-5 sons  
HA Prime Cut 4493-5 sons  
Bubs Southern Charm AA31-4 sons  
Basin Paywht 1682-4 sons  
Ellington Chaps 4095-3 sons  
DAR Pay Upgrade Q807-3 sons

**DVAuction**  
Founding member of **US PREMIUM BEEF**

2014 Certified Angus Beef Seedstock Commitment to Excellence Award

All Cattle  
Sell Free of all known genetic defects  
Free delivery on 3 or more lots within 300 miles

**MOLITOR ANGUS RANCH**

Contact: Richard or Mike Molitor (620) 243-6335  
Fax (620) 243-7533  
Mike -Cell (620) 243-3081  
11598 S.W. 90th St. Zenda, KS 67159  
[molangusonlinezenda.net](http://molangusonlinezenda.net)





Writing this morning from the Country Cafe in Mullinville. I should get frequent driver miles. We have crossed the state so many times in the past few weeks - Topeka, Leocompton, Minneapolis, Greensburg, Salina, Leavenworth, Dodge City, Lincoln, Wichita, Garden City, Wallace, of course, and all points in between. I thought I might sit down and add up the counties but it might be easier counting the counties we have not visited. The best thing about being Around Kansas is the people that live Around Kansas!! Everywhere we go there are friends - often friends who feed us and take us in.

From Aunt Nutters in Leocompton to Kate's in Dodge City, there are so many wonderful local restaurants that serve homemade food, whatever "homemade" may be. I love the flavors Around Kansas! The Ger-

man, the Mexican, the Swedish foods and all the flavors in between. Kansas has such rich and varied traditions.

The foods and traditions, though, are still reflective of the people - the unique and varied people. Perhaps that is what I love most about these little cafes - the people you encounter along the way, the real people Around Kansas.

Time to hit the road again.

Deb Goodrich is the host of the Around Kansas TV show and the Garvey Texas Foundation Historian in Residence at the Fort Wallace Museum. She chairs the Santa Fe Trail 200, the 2021 bicentennial of that historic road. Contact her at author.debgoodrich@gmail.com.

**GRASS & GRAIN**  
Place your Classified Ad ONLINE at: [grassandgrain.com](http://grassandgrain.com)

The HIGH PROTEIN and FAT in our products brings a NEW DYNAMIC to the Livestock Feed Market.

28% DDG range cubes and pellets (7/8 and 5/16). All natural 8% fat. Also available in 200# tick tubs. \$350/ton your cost in 1 ton tote bags, loaded on your pickup or trailer. Delivery available for fee, semi loads or half loads includes delivery w/i 75 mi. of Woodbine, KS. These are DGI manufactured high quality products.

**Heart Mill Iron Ranch Products**  
785-366-0962



**Focusing on What Matters**  
More Profit for You

**Annual Production Sale**  
March 20, 2020

200 Red Angus and Sim-Red Angus Bulls  
50 Bred Commercial Red Angus Fall Calving Heifers  
30 Commercial Red Angus Open Yearling Heifers

620.340.7461 (Joe)  
620.340.9774 (Daniel)  
[redcows@mushrushredangus.com](mailto:redcows@mushrushredangus.com)  
[MushrushRanches.com](http://MushrushRanches.com)

**FARM & RANCH AUCTION**  
SATURDAY, MARCH 21, 2020 — 10:00 AM

Held at Washington County Fairgrounds — WASHINGTON, KS

**TRUCKS, PICKUPS, TRAILERS:** 1997 Freightliner Tandem Semi (Cummins N14, 208,362 miles); 1992 Chevrolet 2500 4x4 (350 rebuilt, 2,000 miles ago, 5 spd, 104,000 miles); 1973 Ford F600 2 ton w/18" box & hoist (steel bed, 330 engine rebuilt 2 yrs ago, 64,339 miles); 1970 C60 tandem w/20" box & hoist (31,000 miles); 1967 Dodge 600 2 ton w/16" box & hoist; 1994 Toyota 4x4 (parts pickup); 2004 40' Neville single axle ground load livestock trailer; 1990 16' Titan gooseneck stock trailer; 1972 16' bumper hitch stock trailer; 6 1/2'x14' shop built tilt trailer; 5'x9 1/2' Sure-Track tilt trailer; 30' gooseneck frame; pickup flatbed 8'x6'10"; 6'x13'4 wheel wagon; 6'x12'4 wheel wagon w/hoist; 4 wheel hayrack w/David Bradley running gear.

**TILLAGE, SPREADERS, BLADES, SPRAYER:** JD 785 manure spreader; 22' Krause disc, chisel; MF 520 Disc; Wil-Rich 2500 cultivator; Ritchie Bestway pull-type sprayer; Kent 524 cultivator; JD 230 Disc; JD 44 manure spreader; MF 130 manure spreader; 12' Heavy built box scraper; Hutchmaster 10' off-set disc; BMB 6 row 30" Danish tine cultivator; JD model N manure spreader; JD 9' dozer blade w/mount; JD 4 bottom 16" plow (semi mount).

**HAY EQUIPMENT, SILAGE, HEADERS:** Case 8465A round baler w/monitor (shows 6,283 bales); 3 pt wheel rake; 10 wheel Panorama folding wheel rake; JD 24T square baler; Oliver 520 square baler; 7' New Holland 455 sickle mower; 40' New Holland 132 bale elevator (just needs motor); JD 38 silage chopper (2 row head & pickup head); Brady silage wagon; JD 653 row head; JD 853 row head; JD 220 rigid head.

**ATTACHMENTS, MOWERS, LOADERS:** Skid Steer (all new); 2020 Hawz 84" rock & brush grapple; 8' snow pusher (box style);

**LIVE INTERNET BIDDING powered by EquipmentFacts MUCH MORE BY SALE DAY! Additional Consignments Welcome! Lunch available. Loaders available.**

CNH 48" pallet forks; Easy Man tree & post puller; buckets (dirt style & high capacity style) 72", 84", 96"; Used: Kansas Clipper tree shear; 2001 Grasshopper 720K w/60" deck (1379 hours, NEW 20 hp Kohler); 12" BMB Haysaver mower; Danuser 3 pt post digger; Roller Stator 3 pt bale unroller/wire winder; 3 pt bail unroller; Great Bend 770 Loader; 3 pt log splitter (heavy duty); ITCO 3 pt post digger w/8" auger; JD 46A loader w/bucket (made for JD 30 series tractors, dual cylinders); big square bale fork (fits westendorf loaders).

**GRAIN HANDLING & MISC.:** McCormick International auger wagon; Davis roller mill (42" milo rolls, grooves good); MF 2 1/2 ton grinder mixer; MF narrow front end; 3 pt gooseneck hitch (shop built); Gleaner to Deere header adapter; log chains; Solid rubber skid steer tires (set of 4); Grouser skid steer tracks; pair JD 4630 dual hubs & rims; older wood Clipper seed cleaner.

**LIVESTOCK EQUIPMENT & FENCING:** Helms Fencing & Construction (new): Semi loading chute, Freestanding Corral (includes 2-28" panels, 6-24" panels, 4-14" panels w/10' bow gate, 2-20" panels w/4' bow gate, 1-8' bow gate), 4 bottomless feed bunks, 10 pre-built corner braces, 5 bar gates: 2-10', 2-12', 2-16', 2-20', 6 bar gates: 2-10', 2-12', 2-16', Calf sorting gate, 2 sets gate hanging jacks, Linn Post & Pipe (new): 20 count 24" 2 3/8" Freestanding panels, 10 corner braces 8'x8'x8", 10 H braces 8'x8', Misc: Big round bale feeder, 15'x8' hay feeder on skids, Bar 6 UTV cake feeder, Calf shed 20'x7' deep x 5' tall, misc poles, 2-3,000 gal. plastic liquid tanks.

**HAY:** 50 Big Round Sudan bales (net wrapped roughly 1500 lbs, tested low nitrate and around 8% protein); 40 Big Round Straw bales (net wrapped).

**Kansas county-level commodity estimates now available**

County-level estimates for 2019 row crops are now available, according to the USDA's National Agricultural Statistics Service. The estimates, based primarily on surveys conducted with farmers and ranchers last fall, can be accessed using the Quick-

Stats online database, found online at: <http://www.nass.usda.gov/QuickStats/>

County-level row crop estimates are not published if any of the following conditions exist:

- Estimated planted acres are less than 500.

• Insufficient number of producer reports were received to establish statistically defensible estimates.

• Estimate would not guarantee confidentiality of reported data from an individual producer.

The commodity esti-

mates released include corn, sorghum, and soybeans. County-level estimates for cotton will be published in May 2020.



# BAR ARROW CATTLE COMPANY

---

**30<sup>TH</sup> ANNUAL PRODUCTION SALE**  
March 10, 2020 • 1:00 PM CST • At the Ranch

**80 GELBIEH & BALANCER<sup>®</sup> YEARLING BULLS**  
**15 GELBIEH & BALANCER<sup>®</sup> ELITE HEIFERS**

**BAG GROOT 89G**



Sired by Foreman  
15.47" REA @ 1172 lbs | 4.13 IMF  
DOB: 3/10/2019 | 50% Balancer



2020 NWSS RESERVE CHAMPION  
PEN OF 5 GELBIEH BULLS

**BAG MR CINCH 62G**



Sired by IVERS Cinch  
REA 13.45" @ 1062 pounds | IMF 4.05  
DOB 3/4/2019 | 80% Gelbvieh

**BAG MR CLYDE 126G**



Sired by BAG Clyde 46D  
REA 15.69" @ 1097 pounds | IMF 4.05  
DOB 3/18/2019 | 75% Balancer



2020 NWSS DIVISION 2 CHAMPION  
PEN OF 3 BALANCER BULLS

**BAG GRADY 28G**



Sired by GRU Early encounter  
REA 14.97" @ 1171 pounds | IMF 3.39  
DOB 2/21/2019 | 50% Balancer

**Other sires include: Lazy TV Rapture, BAG Diamond Back & CTR Sandhills**




**U.S. PREMIUM BEEF**

Phillipsburg, KS • e-mail: [bararrow@ruraltel.net](mailto:bararrow@ruraltel.net)  
785/543-5177 H • 785/543-9120 C  
Cody: 785/309-6455  
Kayla: 785/302-0429


**Bar Arrow Cattle Company**

INTRUST knows ag lending  
like we've been at it for **140 years.**



Our founder, C.Q. Chandler II, built INTRUST Bank on his unique motto - "You do business with people, not companies." His values-based approach has helped INTRUST earn farmers' trust for more than a century, and we still do business that way today. Strong relationships and clear communication always come first - that's **Tradition for Today.**

**David White** 316-383-1435 | **Shawn Eidson** 316-383-1368 | **Quinton Smith** 316-383-1900 | **Ryan Reh** 316-383-1367




**OPEN RANGE SALES CO., LLC**  
[www.openrange.auction](http://www.openrange.auction)  
Find us on FACEBOOK!

Ethan Schuette 785-541-1027	Curtis Stamm 785-747-7675	Ed Durst 785-541-0248
--------------------------------	------------------------------	--------------------------

[intrustbank.com](http://intrustbank.com) | © 2019 INTRUST Bank

**TRADITION for Today**



# NCBA releases consumer research showing widespread confusion about contents of plant-based fake meat

The National Cattlemen's Beef Association (NCBA) recently released survey results that show widespread consumer confusion regarding the ingredient composition and purported benefits of plant-based fake meat products.

In an online survey of more than 1,800 consumers, less than half of the respondents understood the labeling term "plant-based beef" was intended to describe an entirely vegetarian or vegan food product. One major source

of confusion uncovered by NCBA's research is that approximately one third of surveyed consumers believed that plant-based fake meat products contained at least some real beef in them. When asked to evaluate specific product labels and marketing materials from some of the leading plant-based fake beef products currently on the market, the results were astonishing:

\* Nearly two-thirds of respondents believed the fake meat products produced by Beyond Meat, Im-

possible Foods and LightLife contained real beef or some form of animal byproduct;

\* 32 percent of consumers who were shown a package of Beyond Meat's "Beyond Burger" plant-based patties (which features a cow icon) told researchers that they thought the patties contained at least small amounts of real meat;

\* 37 percent of consumers who were shown a package of LightLife's "Gimme Lean", which features the word "Beef" highlighted in a red box, said the product contained at least some real beef.

Neither product contains any real beef.

"The fact that so many consumers look at these labels and think that the products include meat or other animal by-products is a clear sign that the misleading labeling and deceptive marketing practices of plant-based fake meat companies has caused real consumer confusion," said NCBA president Jennifer Houston. "Many of these fake-meat products purposely use graphics and words that trade on beef's good name, and it needs to stop immediately. Consumers rely on names and product packaging to in-

form their purchasing decisions, and they have a right to know that this information is accurate and not misleading."

When asked to rank plant-based fake meat versus beef on a host of food attributes, the results were even more startling. For example:

\* 44 percent of consumers believed plant-based products were lower in sodium, when leading plant-based fake beef is anywhere between 220 to 620 percent higher in sodium than the same size serving of real ground beef.

\* A mere 24 percent of respondents correctly identified beef as being lower in sodium. Scientifically speaking, beef is considered to be an unprocessed or minimally processed food, whereas plant-based fake meat products are classified as

an ultra-processed food product.

\* Unfortunately, 34 percent of respondents believed plant-based fake meat to be less processed and another 34 percent believed fake and real beef products were equivalent on the food processing scale. On the broad category of healthfulness, more than half of consumers believed plant-based meat was better.

"This research is a wake-up call for our industry, the news media, and for federal regulators," Houston said. "We in the beef industry need to do a better job educating consumers about the fact that beef is a nutrient-rich source of high-quality protein and essential nutrients that can play a key role in any healthy lifestyle. We also need reporters and regulators to understand how many consumers are confused and/or misinformed about exactly what's in these new plant-based alternatives."

The Food and Drug Administration has the power to prevent this sort of consumer confusion. In 2020, NCBA said it hopes there will be an opportunity to work with the Agency to end inappropriate use of the word "beef" on all non-meat product labels.



## \*\* PERSONAL PROPERTY AUCTION \*\*

**SATURDAY, MARCH 14, 2020 — 10:00 AM**

LOCATED: Inside at the HANOVER, KS Community Building along Hwy. 148/All American Road. Follow Signs!

**MODEL A ROADSTER, GOLF CART, TOOLS, COLLECTIBLES, HOUSEHOLD**

1928 Ford Model A Roadster w/rumble seat; 2004 Club Car elec. golf cart w/enclosure, 1 yr old batteries; Model A Roadster & golf cart sell at 1 pm. **Tools:** Craftsman 10" radial arm saw; PowrKraft 10" table saw; B&D circular saw; table top drill press; disc/belt sander; Craftsman 10" band saw; B&D cordless drill; 1/2" drill; mini air compressor; shop vac; hand tools; Snap On 3/8-1" comb. wrenches; 3&5" bench vises; bench grinder; jack stands; chain hoist; floor jack; metal tool boxes; metal shelving; small dolly; gas cans; woodwork benches; block & tackle; rope; mole trap; squirrel cage; Hanson 100# scale; automotive items & fluids; car ramps; battery charger; lineman's spade; 5' wood step ladder; wood straight ladder. **Lawn Items:** The Worx cordless trimmer; elec. weed eater; bag chairs; yard art; Rain Train; lawn seeders; hand sprayers; picnic table; Daisy 200 BB/pellet pistol; Daisy pump BB gun; Crossman 177 pellet rifle. **Antique & Collectibles:** Kitchen cabinet; Western Electric, Monarch & Kellogg wall telephones; black Bakelite rotary phones; new Royal treadle sewing machine; 3 pc. Waterfall frt. BR set; sm. oak dining table; oak office chair; high chair; Howard Miller mantle clock; walnut clock shelf; 2 child's Bentwood chairs; painted cabinets; marbles; McCoy planter; few toys; Hanover Fire Dept. dress hat; Airline record player; step stool; school books & kids books; Nobel Cinnamon canister; car calendars; early '40s Jack & Jill magazine; books on local church histories; gun cleaning kit; old typewriters; **1913-2001 KS license plates;** 1927-74 truck license plates; old elec. meters; nut cracker; sleds; car horns; old steering wheels; windshield frames; beer can collection; barb wire collection; ball caps; bushel baskets; tin doll house; Moorman's hat hooks. **Primitives:** Maytag sq. wringer washers; Maytag motor; spurs; stereoscope and cards; cream cans; sad irons; colored fruit jars; medicine bottles; old pop bottles; RR date nails; metal tubs; ice saw; horse hames; brass blow torch; old door knobs; corn sheller; 5 gal. water bottle; wood wagon wheel; brass fire extinguishers; barb wire collection; egg scale; colander; Goetz beer crate; Maytag tins; lunch pail; cherry pitter; hand meat grinder; cigar boxes; ladies & kids bikes. **Crocks:** 20 gal. Redwing (cracked); 6 gal. baled Redwing; 6 gal. Blue Leaf; 3 gal. salt glazed; Blue Band jug; other sm. crocks. Household: Oak china cabinet; lift chair; buffet; 18" Samsung flat screen TV; entrance table w/mirror; oak curio cabinet; cedar chests; metal file cabinets; 16x24 combination safe; pictures & wall decor; typing stand; bookcases; twin roll away bed; modern double glass lamps; usual kitchen items; treadmill; exercise bike; slide projector & screen; Bissell upright vacuum; modern rocking horse; bedding; books; knick knacks; croquet set; lots of canning jars; other numerous items. **Partial Sale Bill. For full listing see websites!** [www.olmstedrealestate.com](http://www.olmstedrealestate.com) • [www.marshallcountyrealty.com](http://www.marshallcountyrealty.com)

**EDWIN & MYRTLE GERMERTH TRUST**

**AUCTIONEERS**  
Tom Olmsted 785-562-6767 Rob Olmsted 785-353-2210 Tim Olmsted 785-353-2487 Jeff Sandstrom 785-562-3788

## AUCTION

**SATURDAY, MARCH 14, 2020 — 9:30 AM**

3408 West 6th, American Legion — LAWRENCE, KS

**40+ FIREARMS**  
Shilo-Sharps Model 1874 45-70 Rifle Octagon Barrel (Very Nice!); Savage Saber Model 10 SVS AR; Custom By Ithaca for SKB Model 600 o/u 12 ga. w/en-graving; Beretta 390 Silver Mallard 12 ga.; Beretta 391 Urika 12 ga. auto; Winchester Model 50 12 ga. & 20 ga.; Winchester Model 69A & 190; 2-Winchester Model 12 12 gauges; Winchester Model 70 264 Magnum w/Scope; Winchester Model 70 30-06 w/Weaver Scope & Sling; Winchester 67 & 74; Remington 11-48 20 ga. & 11-87 12 ga.; Remington Field Master 572 .22; Remington 16 ga. Sportsman 48; Stevens Crack Shot 26; Iver Johnson 410 Champion; Marlin Model 120 12 ga.; Large Amount ammo!; **Daisy BB Collection:** Red Ryder 1938-1988 Model 1938B w/box, Red Ryder Model 1938B NIB Never Opened!; Red Ryder 60th Ann. Limited Ed. Model 1938 w/box, 1894 Spittin' Image w/box, 1938B w/Leather Thong/Saddle Ring 650 shot w/box, Model 105B Pal105 400 shot NIB, Silver Ed. Collector Ed.880 custom plated barrel w/box, Red Ryder #938, Model 105B Daisy Buck, Sheridan "Blue Streak" 5m cal., Power Lines 880 & 990. **Quality Is Outstanding & Condition!** See Internet For Complete List! ALL ATF Rules Apply KS Residents ONLY!

**100+ FARM TOYS**

1/16th W/Boxes: Allis Chalmers: D17 30th Ann. 1984-2014 Helle Farm Equip (Rare!), D19 Toy Farmer, D14 "Summer Toy Festival", Roto-Baler; Case:

600 & 800; IH Highly Detailed 400 w/Milk Cans; Spec. Cast Farmall M Best In Show; Farmall H & 350; Massy 33; Heston 980DT; Farmall Cub's Red 1956-58/59-63/76-79 & Yellow 64-76 & Sp.Ed.; **John Deere:** 8400T, 9400T Coll. Ed., 9300T second in series, 9300T, 9600 Coll. Ed., M, D, LA, A, BW, BN, 70 Row Crop, G, AR, 630 LP, 60, GP wide tread, 1961 4010, 720 Hi Crop, 620, 6400 Row Crop, 6400 MFWD, 7800 w/duels, 40 Crawler, & Many More!

**1/16th No Boxes:** Combines: 70's Allis Chalmers Gleaner L2 (1/32nd), 2-70's JD 6600's, JD Turbo II & 9610 Maximizer w/duels; AC 170 1991 Summer Festival; AC 190 console control w/bars grill & 190 XT console control; JD 520 diesel; 50's McCormick manure spreader; 50's JD A w/Driver; JD 420/2440/3020/3020 nf/4520; Farmall 706 round fenders; IH 1206 Turbo nf; IH 660; IH 826; Implements: 70's JD folding discs/planter/square baler, IH square baler; 3-IH folding discs; 2-JD plows; 2-JH 550 Mulch master Cultivators; AC grain wagons & flare box wagon & More!

**RARE VINTAGE KU BRONZE MEN'S BASKETBALL PLAYER**

**COLLECTIBLES, COINS, MISC.**

1960's Jim Beam Decanters; 1900's Vintage Cast-Iron Lion Coin Bank; Vintage Coin Banks & Change Holders; 1920's Peace Silver Dollars; Silver Halves/Dimes/Nickels; Mint & Proof Coin Sets; Connexion Men's Golf Set w/bag; misc. too numerous to list!

Preview Begins at 7:00 AM. Day of Auction ONLY! Quality Is Outstanding! NO Miscellaneous!

**ELSTON AUCTIONS • (785-594-0505) (785-218-7851)**  
"Serving Your Auction Needs Since 1994"  
Please visit us online: [www.KansasAuctions.net/elston](http://www.KansasAuctions.net/elston) for Pictures!

• 18<sup>TH</sup> ANNUAL BULL SALE •

# SCHRADER

ranch

**TUESDAY, MARCH 17, 2020 | 1:00 PM AT THE RANCH**  
Top End Bid Off | 80 Charolais & SimAngus Bulls on Test

Charolais Sires: LT Patriot, LT Venture, LT Landmark, RBM Fargo, WC Milestone  
Simmental Sires: Hook's Black Hawk, Koch Big Timber, Hook's Eagle, CCR Cowboy Cut, W/C Relentless

**QUALITY... NO MATTER WHAT COLOR**

**Suther Feeds, Inc.**  
SUTHER FEEDS - DIRECT LINK  
Dan Suderman, 620-381-1014  
Spencer Schrader, 785-488-7204

**SCHRADER RANCH**  
Spencer, Laci, Weston & Josi Schrader  
Home, 785-488-2135 | Spencer, 785-488-7204  
2118 Oxbow Road Wells, Kansas 67467  
email: [schrader@twinvalley.net](mailto:schrader@twinvalley.net)

For more sale information, videos & the sale catalog visit our website [www.schraderanch.com](http://www.schraderanch.com)

# BENOIT ANGUS RANCH

The Brand of Excellence

**31<sup>ST</sup> ANNUAL PRODUCTION SALE • THURSDAY, MARCH 19, 2020 • AT THE RANCH, ESBON, KANSAS**

**SELLING 150 13-15 MONTH OLD BULLS & OUR 10 BEST CONFIDENCE PLUS YEARLING HEIFERS**



19196960 - E&B Plus One

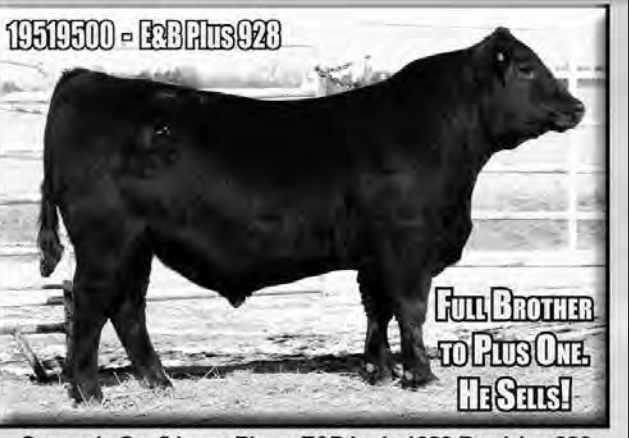
Confidence Plus x E&B Lady 1023 Precision 936

**TWO FULL BROTHERS SELL!**

• Plus One was our high selling bull last year going to Tailor Made Genetics, Montana & Byrd Cattle Co., California.

• A full sister to Plus One that was raised at Benoit Angus was sold at auction for \$200,000 in the Spruce Mountain sale in Co.

• A 10% revenue-sharing semen interest was sold for \$100,000 at the most recent National Finals sale in Las Vegas.



19519500 - E&B Plus 928

Connealy Confidence Plus x E&B Lady 1023 Precision 936

**FULL BROTHER TO PLUS ONE. HE SELLS!**

CED 9 / BW .7 / WW 63 / YW 119 / MILK 25 / CW 53

MARB .54 / RE .88 / FAT .013 / \$M 67 / \$W 69 / \$B 157 / \$C 271



19522024 - E&B Treasure 951

MGR Treasure x E&B Lady Plus 628

CED 3 / BW 3.1 / WW 84 / YW 162 / MILK 27 / CW 78

MARB 1.10 / RE .84 / FAT .039 / \$M 68 / \$W 80 / \$B 196 / \$C 322



19527958 - E&B New Addition 998

E&B New Addition 608 x E&B Lady Sure Fire 7194

CED 5 / BW .6 / WW 84 / YW 150 / MILK 34 / CW 70

MARB 1.05 / RE .89 / FAT -.002 / \$M 64 / \$W 97 / \$B 203 / \$C 328

**ALL CATTLE ARE PARENT VERIFIED & SELL WITH GENOMIC ENHANCED EPDs** LiveAuctions.TV

**OTHER SIRES INCLUDE:**

**E&B Payweight 790** .18922350 • **E&B Plus 7125** .18873020

**Connealy Template 5416** .18226259 • **Connealy Glory 4127** .17888624

**Connealy Mainstay** .18839231 • **GAR Sure Fire** .17328461

**GAR Discovery 6737H** .18749135 • **S Whitlock 179** .17007891

**S Model 678** .18539214 • **Baldridge Colonel C251** .18493773

**Basin Payweight 1682** .17038724

**BENOIT ANGUS RANCH**

1-888-870-BULL

Everett & Bonnie Benoit (785) 725-3231

Doug Benoit (785) 545-6806

Chad Benoit (785) 545-8095

[ebbenoit@ruraltel.net](mailto:ebbenoit@ruraltel.net) • [www.BenoitAngus.com](http://www.BenoitAngus.com)  
621 Hwy. 36 • Esbon, KS 66941

# EquiFest 2020 to be held at Tony's Event Center in Salina March 6-8

Equifest fans, the location is new! Kansas Horse Council is excited to move to Salina for Equifest of Kansas on March 6, 7 & 8, 2020. This is the premier all-breed horse fair and exposition, opening for the 23rd consecutive year at its new location, Tony's Pizza Events Center & Saline County Expo Center in Salina.

Tickets are available on site at Equifest of Kansas, by going to the Tony's Pizza Events Center Box Office window. Prices are \$15/day or \$35 for all three days. Kids 12 and under are free! Doors open at 9:00am daily.

The 2020 lineup is set, and schedules are posted! Get details at [www.equifestofks.com](http://www.equifestofks.com) or check them out on Facebook. They are



Clinician Chris Cox will present several workshops throughout EquiFest, March 6-8 in Salina. *Courtesy photos*

excited to feature headliner clinician Chris Cox, and Billboard chart-topping singer/songwriter, Ms. Adrian "Buckaroo-girl" Brannan. Don't miss the original TravAlum Ranch Rodeo competition at 7 p.m. nightly on Friday and Saturday, where twelve teams compete for the buckle. On Saturday afternoon, they'll feature some living legends in the horse industry at their Legendary Kansas Horseman's workshop panel. Come see a farrier competition, Battle of the Breeds, Fort Riley Commanding General's Mounted Color Guards, a breed showcase, pack mules, draft hitches, saddle seat and versatility ranch class demonstrations, plus live

horse workshops in Kenwood Hall, near the Kid-die Corral and the Old Time Photo booth. Don't forget the Mounted Shooting competition on Friday and Saturday. You'll want to check that out and then stop by to visit these folks who also performed in a new family fun adventure movie, The Lost Treasures of Jesse James... get your picture with them in the 4-H building at Equifest of Kansas! Plus, don't miss Cowboy Poetry & Music, some fine western art and a silent auction to boot!

You'll find wall-to-wall shopping inside and out, great food and a whole lot of fun!

Equifest of Kansas is the primary fundraiser for the Kansas Horse Council.

## Plenty of variety in EquiFest Workshops

### FRIDAY, March 6th WORKSHOPS

9:30 a.m. Rhonda Martin-"Improve Your Horse's Self Carriage and Comfort - core activation and topline strength building for the horse"

9:45 a.m. Dr. Andy Hawkins- "Equine Disposal Guidance"

10:30 a.m. Mette Rosenkrantz-"The Importance of Cross Training for All Horses & Disciplines"

10:45 a.m. Michael Hook-"Old Town Abilene, 160 Years in the Making"

11:30 a.m. Matt Jobe-"How to Get Involved in

Mounted Shooting"

11:45 a.m. Sue Stringer-"Resources for Getting Started in Agritourism"

12:30 p.m. Jim Gray-"Head 'Em Up! Move 'Em Out! The Old West Texas Cattle Trails"

12:45 p.m. Casey Hufstader-"Mule Packing"

1:30 p.m. John Staples-"Bringing Your Flatwork Into Your Jumping"

2:00 p.m. 4-H Special Presenter: Adrian Buckaroo-girl, "The West Wasn't Won On A Salad"

2:30 p.m. Sue Stringer-"Resources for Getting Started in Agritourism"

12:15 p.m. Battle of Breeds: DRIVING COMPETITION

1:00 p.m. Mette Rosenkrantz: "Warm Up Exercises"

2:00 p.m. Chris Cox: "Building Rider Confidence"

3:30 p.m. Rake Arena & Set Jumps

3:45 p.m. John Staples: "Cross Country: How to Influence the Horse"

4:45 p.m. Battle of Breeds: JUMPING COMPETITION

5:45 p.m. Bring in Cattle/Announcer Break

6:15 p.m. Draft Team Hitch Demo

6:30 p.m. Opening Ceremonies & Introductions

7:00 p.m. Liberty, Inc. TravAlum RANCH RODEO COMPETITION

SUNDAY MARCH 8TH

9:30 a.m. Opening Ceremonies: Draft Team Hitch

9:45 a.m. Mette Rosenkrantz: "Lateral Movements"

10:45 a.m. John Staples: "Stadium Jumping: How to Ride Forward Into Balance"

11:45 a.m. Remove jumps

12:00 p.m. Draft Team Hitch Demo

1:00 p.m. Rake Arena

1:15 p.m. Chris Cox: "Controlling Head Tossing & Stiffness"

2:45 p.m. Rake Arena

3:00 p.m. Battle of Breeds: FREESTYLE FINALS COMPETITION

4:15 p.m. Happy Trails End of Equifest 2020!

2:45 p.m. 4-H Judging Awards

3:30 p.m. Jay Henson-"What is the National Versatility Ranch Horse Association?"

4:00 p.m. Sarah Track-"Equitation, Form To Function"

4:30 p.m. Andrea Caponetto-"Buying Tack Online"

SATURDAY, March 7th WORKSHOPS

9:30 a.m. Jay Henson-"Tack, Equipment & What Kind of Horse"

9:45 a.m. Caden Butler-"Estate Succession Planning"

10:30 a.m. Mette Rosenkrantz-"Preparing Your Horse & Self for the Show Season"

10:45 a.m. Casey Hufstader-"Mule Packing"

11:30 a.m. Matt Jobe-"How to Get Involved in

Mounted Shooting"

11:45 a.m. Erin Glassman-"Distance Equestrian Sports"

12:30 p.m. Jim Gray-"Trailin' Longhorns on the Chisholm Trail"

12:45 p.m. Adrian Buckaroo-girl-"Dear Cowgirl: Riding through the tough stuff"

1:30 p.m. John Staples-"How To Influence The Horse"

1:45 p.m. Andrea Caponetto-"Selling Tack Online"

2:45 p.m. Sarah Track-"Saddle Seat Horsemanship"

3:30 p.m. Legendary Kansas Horsemen

SUNDAY March 8th WORKSHOP ROOMS

10:30 a.m. J.T. Burnley-"Healing, Hope, & Horses"

10:45 a.m. Sarah Track-

• Cont. on page 12

## EquiFest Arena Schedule

### FRIDAY MARCH 6th

9:30 a.m. Opening Ceremonies: Draft Team Hitch

9:45 a.m. Mounted Shooters NOVICE COMPETITION

10:30 a.m. Chris Cox: "Groundwork In Preparation for Riding"

12:00 p.m. Battle of Breeds: PATTERN CLASS COMPETITION

12:30 p.m. Mette Rosenkrantz: "Thinking Outside of the Box"

1:30 p.m. Mounted Shooters AMATEUR COMPETITION

2:15 p.m. Rake Arena

2:30 p.m. Chris Cox: "Is it Me or My Horse?"

4:00 p.m. Rake Arena & Set Jumps

4:15 p.m. John Staples: "Gymnastics: Bringing Your Flatwork into Your Jumping"

5:15 p.m. PARADE OF BREEDS

5:45 p.m. Bring in Cattle/Announcer Break

6:15 p.m. Draft Team Hitch Demo

6:30 p.m. Opening Ceremonies & Introductions

7:00 p.m. Liberty, Inc. TravAlum RANCH RODEO COMPETITION

SATURDAY MARCH 7TH

9:30 a.m. Opening Ceremonies: Draft Team Hitch

9:45 a.m. Mounted Shooters PRO COMPETITION

10:30 a.m. Chris Cox: "Connecting the Reins, Feet & Seat"

12:00 p.m. Rake Arena & Set Obstacles

**UNITED MOSQUITO & FLY CONTROL**

Finally, a solution that **ACTUALLY WORKS** for control of flies & mosquitoes in your barn!

**TAKE BACK YOUR BARN!**

Call us today **913-558-3814**

- United Mosquito's automatic insect control system
- Custom designed and installed in your stable
- Natural insecticide is refilled by United Mosquito's technician on a regular service route
- Service on existing systems

[unitedkc.com](http://unitedkc.com)

**Stable Balance Blocks**

By Liora's Creative Sewing

Liora Anstandig  
liorascs@aol.com  
816-668-9574  
On Facebook as:  
Chiropractic Bale Covers

easy to clean, built to stand on safely, many colors, custom sizes

You stand on our products, we stand behind them!

Get Your Copy of Grass & Grain Every Week... Subscribe Today!

Since 1954

# GRASS & GRAIN

Published by AG PRESS

CALL (785) 539-7558 or go online at [www.grassandgrain.com](http://www.grassandgrain.com)

[WWW.CAPOCUSTOMSADDLES.COM](http://WWW.CAPOCUSTOMSADDLES.COM)

## CAPO CUSTOM SADDLES

UNPARALLELED QUALITY UNEXPECTED PRICE

OLATHE, KS (816) 723-6935

**STURDI-BILT**

ESTABLISHED 1976

Storage Barns | Garage Doors | Containers  
Livestock Shelters | Garages | Cabins | Patio Furniture

800.281.5998 [www.sturdi-bilt.com](http://www.sturdi-bilt.com)

Quality products and services you can depend on at a price you can afford.

Family owned and operated for 44 years!

**Don't Forget To Visit G&G Online!**

The Grass & Grain homepage offers free services available to all readers — print and online.

- Online classified ad placement
- Online Subscription Service
- USDA Market Reports
- Online Edition
- Archived Editions

Go To [grassandgrain.com](http://grassandgrain.com)

**R Bar B** Topeka, KS

Where Western is a Way of Life

Trailers • Equestrian Supplies • Family Apparel • Jewelry & Gifts • Leather Repair

785-286-3006

24' Ranchers  
Regular Price \$21,900.00  
\* Year end sale: \$18,900.00 \*

16' Single Axle Half Nose  
Regular Price \$12,900.00  
\* Year end sale: \$11,900.00 \*

Limited to stock on hand

March 6, 7 and 8, 2020

at Tony's Pizza Events Center and Saline County Expo Center in Salina, KS

Don't miss the 23rd annual Equifest of Kansas

**Kansas Horse Council**

Presents

# EQUIFEST OF KANSAS

[www.equifestofks.com](http://www.equifestofks.com)

**BRUSHY CREEK LODGE & RESORT**

Brushy Creek Lodge and Resort  
[www.brushycreeklodge.com](http://www.brushycreeklodge.com)  
info@brushycreeklodge.com

420 County Road 831, Black, MO. 63625  
Office: 573-269-4600

Owners: George and JoAnn Becker

**THE BASEMENT TACK SHOP**

20% OFF ONE ITEM AT EQUIFEST

MENTION THE GRASS AND GRAIN NEWSPAPER AT EQUIFEST AND RECIEVE ONE ITEM AT 20% OFF BOOTH H 76-78

VALID AT 2020 EQUIFEST

[www.basementtackshop.com](http://www.basementtackshop.com)  
Wamego, KS

# High-speed planting research from Ohio examined

By David G. Hallauer, Meadowlark District Extension Agent, crops & soils/horticulture

Somewhere in the corn belt each year, it seems, someone will experience planting delays. At that point, all kinds of options are considered, including switching crops and/or maturities, renting/purchasing additional planting equipment, running longer hours or even planting faster. Ohio State University recently published their 2019 eFields report, with one of their studies looking at one of those options: planting faster.

The potential to purchase planters equipped with high-speed capable seeding systems is greater than ever before. In this central Ohio study, researchers used a planter equipped with a heavy downforce package to evaluate the effect of four planting speeds (5, 7.5, 10, and 12.5 miles per hour) on emergence and yield.

Their conclusion? While spacing was not perfect, depth remained consistent. This critical facet of emergence was an important observation in the study due to the effect it can have on delaying emergence during the growing season. Stand

counts ranged from a low of just under 26,000 plants per acre at the lowest speed to 28,000 plants per acre at 10 mph. Yields were also very consistent for the 5, 7.5, and 10 mile per hour treatments, varying only one bushel per acre. The highest speed treatment yield dropped by four bushels per acre.

We're certainly not Ohio. We have plenty of restrictions from the standpoint of field size/shape and even equipment, too. These studies help us to see, however, that a properly set up planting system can result in good stands and yields - even at higher

speeds.

## Soil Testing

One of the more common concerns about gardens, when plants aren't producing, is nutrient deficiencies. While it's possible that nutrients are the cause of your garden's 'growing' problem, data out of our KSU Soil Testing Lab would suggest that most lawn and garden soil tests have more than adequate levels of Phosphorous and Potassium. Does that mean a soil test is worthless? Quite the contrary.

Over-application of nutrients can result in problems just like under application. They are not only a waste of money but can be a source of pollution or algae blooms. Excess nutrients can even result in

nutrient tie-up. Determine whether nutrients are the issue, with a soil test. Soil sampling isn't complicated. Start by checking with your District Extension Office to see if there is a soil probe available for checkout. If so, use it - it will make your sampling job much easier.

Make sure when sampling that you are getting representative samples from multiple locations in the garden or lawn. From the area in question, collect eight to twelve sub-samples to a depth of six to eight inches. Mix the sub-samples together in a clean container and select about one pint of soil. You can take that sample to your District Extension office for testing via the KSU Soil Testing Lab. An indi-

vidual sample costs \$14.

While a soil test determines fertility issues, it will not tell you that you have poor drainage, poor soil structure, soil borne diseases, insects, chemical contaminants, etc... All of these will take additional evaluations, but a soil test is a great place to get started. Contact a Meadowlark Extension District Office or myself for further information on testing.

## EquiFest workshop schedule

• Cont. from page 11  
"Horse Show Ringmanship for the Saddle Seat Rider"  
11:30 a.m. Rhonda Martin-"Equine Bodywork and Saddle Fit Basics for the Horseman - Understanding Equine Brain, Pain and Training"

11:45 a.m. Adrian Buckaroo- "Failure"  
12:30 p.m. Jim Gray-"Trail's End at the Smoky Hill River"

12:45 p.m. Erin Glassman BCHA-Kansas Pres and Wendy Bowles of Kanopolis State Park-"Kansas Treasures: State Park Trails"

1:30 p.m. Michael Hook-"Old Town Abilene, 160 Years in the Making"

1:45 p.m. John Staples-"How To Ride Forward Into Balance"

## REAL ESTATE AUCTION

TUESDAY, MARCH 10, 2020 — 10:00 AM

Auction will be held at the farm located 1/2 mile East of 281 Highway on 250 Road (8 miles South of Smith Center, KS or 1 mile North of Highways 9 & 281).

**Tract I: E 1/2 SW 1/4 & W 1/2 SE 1/4 34-4-13 Smith Co. Kansas Less tract with well in South West Corner.**

The farm is located at the auction location (1/2 mile East of 281 Highway on 250 Road). 158.54 farmland acres with 82.94 acres crop, 59.60 acres grass and 16 acres creek. There is a barn, double & single garages and corrals. The farm has a well in lots. The bases are wheat 39.87 with 38 bu yield, grain sorghum 17.81 with 70 bu yield for a total of 57.68 base acres. The farm is enrolled in ARC County program. 2019 taxes were \$1,469.06. Seller will pay \$400.00 of 2020 taxes. Possession on open ground, grass and creek will be on April 15, 2020. Possession of ground planted to wheat 58.44 acres will be after 2020 wheat harvest.

**Tract II: NE 1/4 34-4-13 Smith Co. Kansas.**

The farm is 1/2 mile East of Highway 281 on 240 road. This tract is North of Tract I. 160.34 farmland acres with 96.61 acres crop with 6.15 acres planted to alfalfa, 37.48 acres grass and 19.1 acres creek. The farm has a well in the pasture. The bases are wheat 48.27 with 38

bu yield, grain sorghum 21.55 with 70 bu yield. The farm is enrolled in ARC County program. 2019 taxes were \$1,663.14. Seller will pay \$300.00 of 2020 taxes. Possession on open ground, alfalfa, grass & creek will be April 15, 2020. Possession of ground planted to wheat 34.43 acres will be after 2020 wheat harvest.

### BOTH FARMS HAVE BEEN GOOD CATTLE AND HUNTING FARMS.

**Possession:** Possession on both tracts will be April 15, 2020 except for land planted to wheat. **Terms:** 10% of purchase price as down payment day of auction, the balance will be paid as follows 40% of purchase price paid on April 15, 2020, the remaining 50% will be paid on April 15 2021.

Down payment will be escrowed with Dietz & Hardman Law Office. Escrow fees will be split 50/50 between seller & purchaser. Title insurance will be used, the cost will be split 50/50 between seller & purchaser.

Thummel Real Estate & Auction LLC is acting as seller agent. **All statements made day of auction take precedence over printed material.**

\*Also selling will be farm machinery and cattle equipment after the Real Estate  
**ROY BELL FAMILY**  
Auction Conducted By: THUMMEL REAL ESTATE & AUCTION LLC  
785-738-0067

## Kansas cattle on feed up seven percent

Kansas feedlots, with capacities of 1,000 or more head, contained 2.40 million cattle on feed on February 1, according to the USDA's National Agricultural Statistics Service. This inventory was up 7 percent from last year. Placements during January totaled 445,000 head, up 16 percent from 2019. Fed cattle marketings for the month of January totaled 455,000 head, unchanged from last year. Other disappearance during January totaled 10,000 head, unchanged from last year.

## MACHINERY AUCTION

SATURDAY, MARCH 7, 2020 — 10:30 AM

Auction will be held at the farm located 1/2 mile North of IONIA, KS on Highway 128 (7 miles South of Highway 36 & Highway 128 West of MANKATO, KS or 12 miles North of Highway 24 & Highway 128 West of GLEN ELDER, KS)

### TRACTORS, COMBINE & SWATH

2013 John Deere R450 diesel swather 995 rotary head 15', 462 engine hrs. 367 header hrs (1EOR450XICD390591); 2010 John Deere 9430 4-wheel tractor tractor 3pt. PTO, powershift 3543 hrs. (1DW9430P1AP017820); 2001 John Deere 8310 front wheel assist diesel tractor, powershift, weighted, 5711 hrs. with JD 840 loader, 8' deep bucket w/grapple (RW8310P001536); 1997 John Deere 7610 diesel tractor, Power Quad transmission, weighted, 3643 hrs. (RW76108001137); 1982 Case 2090 diesel tractor, powershift, 6591 hrs; Cat D4 diesel dozer w/pony motor has been setting; 1958 John Deere 630 tractor wide front, 3 pt., PTO, hyd; Ford 8N tractor; 2000 John Deere 9650 diesel combine new radial tires, new cylinder bars, walkers (HO9650W685730); 2009 John Deere 925 flex header 25'; 2005 John Deere 930D 30' draper header; John Deere 853 row head needs

center floor; 30' adjustable header trailer w/dolly wheels; 2005 Patriot 220 seed tender; Brent 410 Grain Train 400 bu grain cart.

### SKID LOADER & MACHINERY

2011 John Deere 320 diesel skid steer, cab heat & air, 320 hrs. 6' bucket solid tires; tree shear; post hole digger; 2008 Maclander tandem axle skid loader trailer; 2015 Landoll 6230 tandem disc 36'; 2011 Great Plains 4000HD 40' double disc drill; 2011 Great Plains 8551 field cultivator w/harrow; 2009 Great Plains 1700 Sub Soiler 8 shank; 1996 John Deere 1700 12 row Max Emerge II planter, w/insecticide; Krause 4200 field cultivator 32'; John Deere Wheatland 29'3" tandem disc w/harrow; Mayrath 60' 8" auger w/swing hopper; 12 bale gooseneck big round bale trailer; JD 455 35' disc drill; JD 455 30' disc drill; Spray coupe heavy duty trailer; Donahue 7' x 20' covered gooseneck stock trailer needs work; 3 pt. RW90-7 whirl rake; 500 gal plastic water tank.

### TRUCKS

2008 Dodge Ram 1/2 ton short bed pickup w/hard bed cover, V8, auto, all electric 111,000 miles; 2005 Chevrolet Trail Blazer 8 cy, leather, all electric, 58,368 miles; 1976 Chevrolet C70 tag axle truck, 8 cy, 5 sp, 2 sp, power steering; 18' metal bed w/hoist, 65,947 miles; 1971 Chevrolet C50 truck, 8 cy, 4 sp, 2 sp, power steering; 16' near new metal bed w/power up power down hoist, 32,120 miles; 1975 IHC twin screw truck, 466 diesel engine, 13 speed, power steering; 22' metal bed w/wood floor; Polaris 4 wheel 2 wheel drive; 1957 IHC 1/2 ton 4 wheel drive pickup, 4 speed, 6 cylinder; 1940's Dodge Power Wagon 6 cy, 4 speed; 1986 GMC Sierra 2500 flat bed needs work; 1947 IHC 1/2 ton pickup been setting; 1946 Ford 1 1/2 ton truck has been setting. **2 trailers of hand tools & antiques inc: forge tools, tin seats, wrenches, jacks, cans, boilers, yard chairs, and other items!**

Note: The machinery is field ready. Check our website for pictures [www.thummelauction.com](http://www.thummelauction.com)  
**BUD & JEAN BODEN TRUST NO. 1**  
For information contact Max Flinn at 785-738-0350  
Auction Conducted By: THUMMEL REAL ESTATE & AUCTION LLC  
785-738-0067

## MEYER ESTATE AUCTION

SATURDAY, MARCH 14, 2020 - 10:00 AM

LOCATION: 2621 Big Bear Road — HANOVER, KANSAS  
From Hanover, KS, 5 miles North on 148 to 27 Rd., 1 mile East to Big Bear Rd. & 3/4 mile South. WATCH FOR SIGNS.

### REAL ESTATE TO BE SOLD AT 1:00 PM

#### TRACT I

**Address:** 2621 Big Bear Road, Hanover, KS  
**Legal Description:** Outlots 3 - 5 in East Half East Half (E 1/2 E 1/2) Less Tract in Southeast Quarter Southeast Quarter (SE 1/4 SE 1/4) lying South & West of Horseshoe Creek, Section Twenty-two (22), Township One North (T1N), Range Five East (R5E) of the 6th PM, Washington County, KS. Subject to easements, restrictions and reservations, whether of record or not. Containing 100.1 Acres.  
**General Description:** This improved farm consists of 100.1 acres. There are approximately 84.65 acres of dryland cropland and the balance is building site, timber and road. The farm is a combination of creek bottom and upland soils. 5.83 acres are HEL, 78.82 are NHEL. The building site offers a large 2-story farmhouse with about 2,900 sq. ft. of living area. It has a living room, kitchen, full bath with laundry hookups, 7 bedrooms and screen porch. The home has several Warm Morning heating stoves and window air conditioners. Limestone basement. There is an attached 4-room secondary structure, 30'x32' open front machine shed and several other barns and sheds in various states of repair. Base Acres and Yields are as follows:

CROP	ACRES	PLC YIELD
Wheat	20.27	34
Oats	.29	43
Corn	16.68	72
Milo	3.4	68
Soybeans	17.8	27
<b>Total</b>	<b>58.44</b>	

**TAXES:** 2019 Real Estate taxes were \$2,643.51 and are paid by the Seller. 2020 Taxes to be the responsibility of the Buyer.

**ANNOUNCEMENTS:** Any announcements made the day of the auction shall take precedence over printed material.  
**TERMS:** A non-refundable down payment equal to 20% of the purchase price to be paid down the day of the auction upon signing purchase agreements. The balance shall be due on or before April 14, 2020 or when deed and title insurance commitment are deliverable to the Buyer. The cost of title insurance and escrow closing fee shall be shared equally between the Buyer and Seller. Any lender required policy or endorsements shall be the expense of the Buyer. Marshall County Abstract & Title Company shall provide the title insurance and do the escrow closing. Schultis and Son, Inc. are agents of and represent the Seller. The property is sold "AS IS" with no warranties, inspections, treatments or surveys of any kind being done by the Seller or the Seller's agent. Any and all inspection deemed necessary by the Buyer shall be completed by the Buyer prior to the auction. All floor and window coverings, ceiling fans and fixtures, window air conditioners, heating stoves and attached propane tanks shall stay with the property.

#### TRACT 2

**Legal Description:** South 575' of the Northwest Quarter and Northwest Quarter of Southwest Quarter (NW 1/4 SW 1/4) Less Right of Way, Section Twenty-three (23), Township One North (T1N), Range Five East (R5E) of the 6th PM, Washington County, KS. Subject to easements, restrictions and reservations, whether of record or not.  
**GENERAL DESCRIPTION:** This unimproved farm has about 36.85 acres of dryland cropland and the balance is pasture and road. The cropland is NHEL. Pasture has a pond for water and is fenced. Base Acres and PLC Yields are as follows:

CROP	ACRES	PLC YIELD
Wheat	8.49	34
Oats	.12	43
Corn	6.98	72
Milo	1.42	68
Soybeans	7.45	27

**TAXES:** 2019 taxes were \$1,049.82 and are paid by the Seller. 2020 taxes are the sole responsibility of the Buyer.

### INFORMATION FOR BOTH TRACTS

**MANNER OF SALE:** Farms sell by dollars per acre times the assessed acreage. Farms are sold individually and will not be offered as a package. Tract I will sell first followed by Tract II.

**INSPECTION:** Farms are open to inspection at any time. To view the house and buildings, please call or text Aaron @ 402-300-0316.

**POSSESSION:** Possession of the cropland shall be given on or before April 1, 2020 or when the down payment check clears the bank. Possession of the homesite shall be given at closing.

### PERSONAL PROPERTY

#### VEHICLES

1997 Ford F150 extended cab pickup, auto, topper, shows 158,053 mi.; 1995 Buick LeSabre Limited, loaded, shows 187,500 mi.; 1965 Ford grain truck, 13 1/2' wood box & hoist, shows 70,260 mi.

#### TRACTORS & FARM MACHINERY

1970 JD 3020 dsl tractor, WF, single hyd., clamp on duals, fenders, umbrella, sells w/JD 46A loader; JD 620 tractor, gas, NF, factory 3 pt., 540 PTO; 1971 JD 6600 combine, dsl w/15' header; Blair Feed R wagon, 9'; 2006 Fastline 5'x12' 2-wheel trailer; 8' 3 pt. blade; 12' field cultivator w/harrow; JD 12' tandem disc, good blades; JD mower, 7' bar; 100 bu. Grain-O-Vator; 100 bu. auger bottom trailer; JD 3 pt. chisel plow, 7'; 3pt. bale carrier; PTO post hole digger; JD 20 runner grain drill; 13' JD header; White 4 btm plow; JD 3 btm. plow; NH Hayliner 250 twin tie sq. baler; Vermeer 605A rd. baler; old JD parts combine w/corn head; JD 3 wheel hay rake; Minneapolis Moline manure spreader w/ steel floor; 2 hay racks; 30' grain elevator; 4 row JD Go-Dig; JD 334 corn head; single row chopper; 4 row JD lister; JD 4 row planter; Hesston TT10 swather; 18' Kent Hyra-Harrow; 5' pull-type shredder; 12' Krause tandem disc; bale spear for loader; some scrap iron.

#### STOCK TRAILER

1980 16' Bull Mobile stock trailer, good condition.

#### PANELS, TOOLS & MISC.

30+ port. cattle panels; Honeywell 4750A generator; NEW storm windows 30"x63"; Delta cross bed tool box; Pro Force air compressor; Napa battery charger & starter; Hi Lift jack; 4' Louisville step ladder; air tank; sm. 3 pt sprayer; 24' ext. ladder; JD kerosene heater; Lincoln elec. arc welder; cycle grinder; PTO Wire Wonder elec. corn sheller; Hastings galv. 6' stock tank; blue fiberglass stock tank; fishing poles; lawn chairs; BBQ grill; Milwaukee drill; socket sets; shop lights; Craftsman tool box; Dewalt drill & sander; Champion pressure washer; shop light; creeper; tank; Poulan 250 chainsaw; sm. anvil; 6" bench grinder; Toastermaster sander; power painter; dolly; 2 ton jack; MANY saws; Bolens snow blower; MANY long handled tools; Stihl weed eater; elec. fence posts; 2 fuel tanks.

#### GUNS

Marlin Model 57 cal. 22 magnum; Remington Model 700 SN rack; 675257 w/Bushnell Scope; old single barrel shotgun; Falls Mass shotgun shells (Winchester 20 ga.)

#### FURNITURE, APPLIANCES & HOUSEHOLD ITEMS

Office chair; La-Z-Boy chairs; lift chairs; full size bedroom sets

w/dressers & chest of drawers; queen bed; mirror; kitchen table & chairs; 48" Vision flat screen TV; coat rack; gun cabinet; Oak cabinet; towel cabinet; exercise bike; desk; elec. organ; end tables; magazine rack; antique rocker; Oak chairs; couch; wheelchair; Midland CB; Conn Trumpet; pictures; dishes; pots & pans; kitchenware; towels; bedding; Harmony Guitar; Coleman lamp; bread maker; Emerson microwave; Woods upright freezer; Maytag washer & dryer; GE elec. stove/oven; NEW Insta POT; Kenmore refrigerator/freezer; Titan heater; small appliances; port. dishwasher.

#### ANTIQUES & COLLECTIBLES

Galv. buckets; coffee grinder; 1906 Washington County plat book; Realistic transmitter radio; handmade Quilts; Chenille bedspread; Corningware; enamel tub; thermometers; Redwing crock buttermilk chicken feeder; 6 gal. Redwing crock, small wing; 12 gal. Redwing crock, big wing; music box; ceramic Christmas tree; 4 cream cans; galv. tubs; Mid-century ash trays; cob box; vintage lamp; wooden crate; phonograph w/records KIMBALL/CHICAGO; Burlap bags; linens; old John Deere books; Globe; wooden storage box; OLD Dodge car radio; 1950s Harmony Guitar;

many other items too numerous to mention

### SCHULTIS & SON, INC.

REAL ESTATE & AUCTION SERVICE

WWW.SCHULTIS.COM  
402-729-2435

**DONALD W. MEYER ESTATE**  
Auction Manager:  
Aaron Schultis, 402-300-0316

## REAL ESTATE AUCTION

THURSDAY, MARCH 12, 2020 — 10:00 AM

Auction will be held in the Andersen Building 220 W. 5th — CONCORDIA, KANSAS

#### Tract I: NW 1/4 17-6-4 Cloud Co. Kansas

The farm is located at SE corner Plum & 70th Roads. 157.09 farmland acres with 122.65 acres crop, 34.44 acres grass. The bases are wheat 83.9 with 34 bu yield, grain sorghum 11.72 with 62 bu yield, soybean 23.45 with 27 bu yield for a total of 119.08 base acres. 2019 taxes were \$2,588.34.

#### Tract 2: SE 1/4 SE 1/4 33-5-4 Cloud Co. Kansas

The farm is located at Rock & 90th Roads. 38.05 farmland acres with 38.05 acres crop. The bases are wheat 26.06 with 34 bu yield, grain sorghum 3.64 with 62 bu yield, soybean 7.28 with 27 bu yield for a total of 36.98 base acres. 2019 taxes were \$689.62.

#### TRACT 3: W 1/2 W 1/2 24-6-5 Cloud Co. Kansas

The farm is located along 50th Road between Noble & Oat roads. 154.42 farmland acres with 123.97 acres crop, 30.45 acres grass. The bases are wheat 84.77 with 34 bu yield, grain sorghum 11.84 with 62 bu yield, soybeans 23.68 with 27 bu yield for a total of 120.29 base acres. 2019 taxes were \$1,939.66.

#### TRACT 4: NE 1/4 29-5-4 & South of railroad in SW 20-5-4 Cloud Co. Kansas

The farm is located along Highway 28 on 80th Road. 175.53 farmland acres with 145.33 acres crop, 30.20 acres creek. The bases are wheat 93.6 with 34 bu yield, grain sorghum 13.07 with 62 bu yield, soybeans 26.15 with 27 bu yield for a total of 132.82 base acres. 2019 taxes were \$2,992.94.

#### TRACT 5: NE 1/4 32-5-4 Cloud Co. Kansas

The farm is located 1/2 mile South of Highway 28 on 80th Road. 158.33 farmland acres with 148.78 acres crop, 9.54 acres waste. The bases are wheat 108.33 with 34 bu. yield, grain sorghum 15.12 with 62 bu yield, soybeans 30.27 with 27 bu yield for a total of 153.72 base acres. 2019 taxes were \$3,319.56.

#### TRACT 6: W 1/2 NW 1/4 12-7-5 Cloud Co. Kansas

The farm is located on Key & 50th Roads. 83.70 farmland acres with 83.70 acres of grass. 2019 taxes were \$341.44.

#### TRACT 7: S 1/2 NW 1/4 18-5-4 Cloud Co. Kansas

The farm is located on 60th Road. 78.67 farmland acres with 76.23 acres crop. The bases are wheat 51.82 with 34 bu. yield, grain sorghum 7.24 with 62 bu yield, soybeans

14.48 with 27 bu yield for a total of 73.54 base acres. 2019 taxes were \$1,521.84.

#### TRACT 8: W 1/2 SE 1/4 30-5-4 Cloud Co. Kansas

The farm is located corner of 28 Highway and 60th Road. 78.03 acres with 49.54 acres crop, 25.72 acres trees & grass. The bases are wheat 33.39 with 34 bu yield, grain sorghum 4.66 with 62 bu yield, soybeans 9.33 with 27 bu yield for a total of 47.38 base acres. There is a 5 room 1148 sq. ft. house w/2 bedrooms, 1 bath, 1/2 basement. The house is in need of work. The seller will do no inspections or repairs on the house. Purchaser has until March 12, 2020 to inspect the home. All statements made day of auction take precedence over printed material. 2019 taxes were \$1,760.08.

#### TRACT 9: N 1/2 NE 1/4 NW 1/4 31-5-4 Cloud Co. Kansas

The farm is located southeast of tract 8. 20.21 farmland acres with 10.35 acres crop, 9.14 acres trees & grass. The bases are wheat 6.98 with 34 bu yield, grain sorghum .96 with 62 bu yield, soybeans 1.95 with 27 bu yield for a total of 9.9 base acres. 2019 taxes were \$221.68.

#### TRACT 10: 8.9 ACRES in S 1/2 NE 1/4 31-5-3 Cloud Co. Kansas

The farm is located West of Concordia on Highway 9 Northwest of the power transformers and South of the railroad. The bases are wheat 4.44 with 51 bu yield, soybeans 4.46 with 46 bu yield. 2019 taxes were \$191.60.

#### TRACT 11: .52 ACRES in BLOCK 1 LOT 13 JAMESTOWN, KANSAS

Lot on Webster street in Jamestown. 2019 taxes were \$61.84

**Possession** will be upon closing on or before April 30, 2020. All farms are enrolled in ARC County program.

**Terms:** 10% of purchase price as down payment day of auction, the balance will be due upon closing on or before April 30, 2020.

Down payment will be escrowed with Condray Law Office. Escrow fees will be split 50/50 between seller & purchaser. Title insurance will be used, the cost will be split 50/50 between seller & purchaser.

Thummel Real Estate & Auction LLC is acting as seller agent. **All statements made day of auction take precedence over printed material.**

**LARRY CRUM TRUST**  
Auction Conducted By: THUMMEL REAL ESTATE & AUCTION LLC  
785-738-0067

# Grass & Grain Area Auctions and Sales

Online auction open now (bidding soft closes March 4, 8 PM) — All new merchandise, landscape decor, tools, cleaning supplies, kitchen & bath supplies, seasonal decorations, door bottom protectors, furnace filters held at [hollingerauction.hibid.com/auctions/current](http://hollingerauction.hibid.com/auctions/current) for Pride Ag Resources. Auctioneers: Hollinger Online Auctions.

March 2 — Real Estate Auction held at Lyons. Auctioneers: Farms America, Jim Hollinger.

March 2 — 32nd Annual Lyons Ranch Superior Genetics Angus Bull Sale held at Manhattan for Lyons Ranch.

March 3 — 679 m/l contiguous acres of Pawnee County land held at Larned for William H. Hawery II. Auctioneers: Cows Auction & Real Estate, Inc.

March 3 — 918 acres m/l of Riley County land including pasture, hay meadow, timber, stocked pond, spring fed creek, spring tanks, wildlife habitat, former homesite, buildings, pens & more sold in 2 tracts held at Manhattan. Auctioneers: Gene Francis & Associates Real Estate Brokers & Auctioneers.

March 3 — Production sale held at Guide Rock, Nebraska for S&S Polled Herefords.

March 4 — Rottinghaus Farm & industrial Consignment Auction held at Beattie. Auctioneers: Rottinghaus Auction.

March 5 — 160 acres m/l of Anderson County farmland held at the farm at Harris for Don Jones Family. Auctioneers: Kurtz Auction & Realty Service.

March 5 — 506 acres m/l in Lincoln & Russell County sold in 3 tracts & combinations held at Wilson. Auctioneers: Hall and Hall.

March 5 — Annual Bull Sale held at Courtland for Jensen Brothers.

March 6 — Tractor, combine, trucks, trailers, implements & equipment (excellent equipment) held at Benton for Darryl & Marsha Meyersick. Auctioneers: Sundgren Auction & Land Brokers.

March 6 — 2,112 acres m/l of Wabaunsee County cropland, CRP, pasture and wildlife habitat sold in 9 tracts held at Eskridge for Justin & Barbara Hill and Richard W. Porter. Auctioneers: Griffin Real Estate & Auction.

March 6 — 43rd Annual Legacy Sale held at Manhattan for K-State Legacy Sale.

March 7 — Consignment auction including guns & shop tools, farm machinery & related items held at Goessel. Auctioneers: Van Schmidt Auction.

March 7 — Tractors, forklift, antique tractors, sprayer, combine, trucks, trailers, farm equipment, irrigation items, livestock items, vehicles, other farm related items, ATV, boat, mowers, golf cart held at Leoti for area farmers. Auctioneers: Berning Auction, Inc.

March 7 — Motorcycles, tractor & mower, toys & collectibles, furniture & appliances, tools & miscellaneous held at Chapman for Claude & Sallie Hibbs. Auctioneers: Brown Real Estate & Auction Service, LLC.

March 7 — 500+ lots of coins, 700+ vintage advertising memorabilia manuals & parts/service manuals, collectibles, firearms supplies, furniture, Longaberger & much more held at Lawrence. Auctioneers: Elston Auctions.

March 7 — Semi truck, trailer, pickup, tractor, grain truck, firearms, cattle & farm equipment held at Leon for Kathy Wilson. Auctioneers: Sundgren Auction & Land Brokers.

March 7 — Tractors, machinery, non-running tractors, machinery & trucks, antique tractors, threshers & machinery, livestock equipment,

fuel barrels, shop tools & misc., guns, antiques & collectibles held at Clifton for Delmer Kahrs Estate. Auctioneers: Kretz Auction Service, Greg Kretz with guest auctioneer Randy Reynolds.

March 7 — Farm dispersal including 80s JD 4320 dsl tractor, Westendorf front loader, 2014 Montana Mod. R2844 tractor w/loader, skid steers & other machinery held near Augusta. Auctioneers: Chuck Korte Real Estate & Auction Service, Inc.

March 7 & March 9 — selling (saturday) March 7: Livestock equipment including bunds & feeders, hay, feed oats, antique machinery & other antique items; selling (monday) March 9: large retirement high quality farm machinery auction including JD & International tractors, combines, full line of hay & farm machinery, semi & straight trucks held East of Westphalia for Kenneth W. Renyer Trust. Auctioneers: Cline Realty & Auction, LLC.

March 7 — Coins held at Emporia. Auctioneers: Swift-n-Sure Auctions & Real Estate.

March 7 — Farm machinery, forklift, trailers, trucks, machinery, cattle equipment, miscellaneous, antiques & more held at Erie for Pat & Julia Johnson. Auctioneers: Larry Marshall & Mark Garretson.

March 7 — 160 acres m/l of Washington County farmland held at Linn for John B. & Sharon L. Osmann Revocable Trust. Auctioneers: Midwest Land and Home, Mark Uhlik, Jeff Dankenbring.

March 7 — Tractors, combine & swather, skid loader & machinery, trucks & more held North of Ionia for Bud & Jean Boden Trust No. 1. Auctioneers: Thummel Real Estate & Auction, LLC.

March 7 — Production sale held at Pawnee Rock for Loving Farms.

March 7 — Judd Ranch 42nd Gelbvieh, Balancer, & Red Angus Bull sale held at Pomona for Judd Ranch.

March 7 — Angus cattle including bulls, females, heifers held at Olsburg for Laffin Angus.

March 8 — 2 lots of Manhattan comprised of just about an acre with easy access to K-State and west Manhattan located at Manhattan for Dale & Bobbie Keyser. Auctioneers: Crossroads Real Estate & Auction, LLC.

March 8 — 29th annual Limousin & LimFlex Production sale held at Liberty, Nebraska for Boyer Limousin.

March 9 — 3 bedroom, 2 1/2 baths split level home with all seasons room, 2 car garage, walkout basement & additional lot held at Wamego. Auctioneers: Crossroads Real Estate & Auction, LLC.

March 9 — 2,185 acres m/l of Harper County highly productive crop acres, recreational possibilities held at Anthony. Auctioneers: Farmers National Company.

March 9 — Tegtmeier Polled Herefords 60th Annual Bull & Female Sale held at the farm near Burchard, Nebraska.

March 10 — Real Estate including the farmland tracts in Smith County with wildlife habitat; also selling personal property including tractors, combine & trucks, machinery, cattle equipment & more held South of Smith Center for Roy Bell Family. Auctioneers: Thummel Real Estate & Auction, LLC.

March 10 — 30th annual production sale held at the ranch near Phillipsburg for Bar Arrow Cattle Company.

March 11 — Unreserved online auction of semi truck, dump truck & other farm machinery for Mark E. Collins Revocable Trust Estate at www.

bigiron.com. Auctioneers: BigIron Auctions.

March 11 — 49.34 acres m/l of Ellsworth County farmland held at Vesper for Alsop Sand Co., Inc. Auctioneers: Thummel Real Estate & Auction, LLC.

March 11 — Angus Bull sale held at Haddam for Flat Iron Angus.

March 12 — Tractors, truck, combine & heads, machinery held at Odell, Nebraska for Herb & Marge Wollenburg. Auctioneers: Speckmann Realty & Auction Service, Inc.

March 12 — 232.7 acres m/l Marshall County, two tracts, home site and cropland held at Marysville for Glenna Galloway Estate. Auctioneers: Joe Horigan Realty & Auction Co.

March 12 — Pasture in Western Clay County held at Miltonvale for Bill & Terri Bloomfield. Auctioneers: Clay County Real Estate, Greg Kretz salesman & auctioneer.

March 12 — Real Estate, Cloud County farmland sold in multiple tracts held at Concordia for Larry Crum Trust. Auctioneers: Thummel Real Estate & Auction, LLC.

March 12 — 120 acres m/l of Shawnee County irrigated river bottom land for Meyer Family Properties, LLC. Auctioneers: Murray Auction & Realty.

March 12 — 19th Annual sale held at Manhattan for BJ Angus Genetics.

March 14 — Farmland real estate sold in 2 tracts; personal property including tractors, farm machinery, stock trailer, panels, tools & misc., guns, furniture, appliances, household, antiques & collectibles & much more held at Hanover for Donald W. Meyer Estate. Auctioneers: Schultis & Son, Inc.

March 14 — Farm equipment, construction equipment, cars, trucks, shop tools, household & miscellaneous at Concordia for 34th Annual Concordia Optimist Consignment Auction.

March 14 — Model A Roadster, golf cart, tools, antiques & collectibles, household, lawn items, 1913-2001 KS license plates, crocks & more held at Hanover for the Edwin & Myrtle Germeroth Trust. Auctioneers: Olmsted & Sandstrom.

March 14 — Firearms, ammo, farm toys & miscellaneous held at Lawrence. Auctioneers: Elston Auctions.

March 14 — 121.6 acres m/l Marshall County farmland held at Marysville for Nick & Jennifer Keller. Auctioneers: Midwest Land and Home, Jeff Dankenbring, Mark Uhlik.

March 14 — 160 acres m/l of Northwest Jackson County pasture & farmland with 5 bedroom, 2 bath 1999 Schult modular home with outbuildings to be offered in 3 tracts held at Soldier for Edwin C. & Goldie N. Vance. Auc-

tioners: Cline Realty & Auction, LLC.

March 14 — Equipment, trucks & salvage held at New Cambria for Don Janssen Estate. Auctioneers: Reynolds Auction Service.

March 15 — Bronze sculptures, original artwork, jewelry, antiques, household, home decor, tools yard, fishing held at Strong City for Norman Morray Jr. & property from the Carl Hansen Estate. Auctioneers: Griffin Real Estate & Auction.

March 15 — Ford 801 tractor with loader, Husler 3200 deck mower, golf carts, tools, shop items, lawn & garden, flat screen TVs, antiques, vintage items, household & more held at Osage City for Edward "Pete" Peterson. Auctioneers: Wischropp Auctions.

March 15 — Cattleman's Choice Bull Sale held at Greenleaf.

March 15 — 23rd Annual Performance-Tested Angus Bull & Female Sale held at St. Joseph, Missouri selling fall & spring yearling bulls, cow/calf pairs and bred & open heifers for April Valley Farms.

March 18 — Cow sale held at Manhattan for Cline Cattle Company.

March 18 — Angus Production sale held at Overbrook for Woodbury Farms.

March 19 — 415 acres m/l of quality Farmland on Gypsum Creek in Saline & McPherson counties to be held at Gypsum for Micah Moffitt & Michael D. Becker. Auctioneers: Horizon Farm & Ranch Realty, LLC.

March 19 — 152 acres m/l of Dickinson County farmland held at Abilene for Sharlyn Reynolds. Auctioneers: Reynolds Real Estate & Auction.

March 19 — 31st Annual Production sale held at Esbon for Benoit Angus Ranch.

March 20 — Duck figurines, picture frames, pictures, variety of other new items & misc. held at Clay Center for Cedric Pfaff. Auctioneers: Kretz Auction Service.

March 20 — 24th Annual Production Sale held at Maple Hill for Sunflower Genetics.

March 21 — 800 to 1,000 mostly new in box John Deere farm toys & race cars held at Clay Center for Cedric Pfaff. Auctioneers: Kretz Auction Service.

March 21 — Trucks, pickups, trailers, tillage, spreaders, blades, sprayer, hay equipment, silage, headers, attachments, mowers, loaders, grain handling & misc., livestock equipment & fencing, hay & more held at Washington for farm & ranch consignments. Auctioneers: Open Range Sales Co., LLC. Ethan Schuette, Curtis Stamm, Ed Durst.

March 21 — Antiques, tools, household held at Hanover for Louise (Mrs. Bill) Dierking. Auctioneers: Raymond Bott Realty & Auction.

March 21 — Art & Kansas regional art prints, Indian items & guns, advertising, antiques & collectibles including porcelain & glass held at Salina.

Auctioneers: Thummel Real Estate & Auction, LLC.

March 21 — Production sale held at Kingman for Molitor Angus.

March 21 — On Target Bull Sale held at Blue Rapids for Springhill Herefords & Alcové Cattle Company.

March 21 — Bull sale held at Geneseo for Janssen Red Angus.

March 22 — Furniture, toys & collectibles at Salina. Auctioneers: Thummel Real Estate & Auction, LLC.

March 23 — 156.2 acres m/l of Northern Wabaunsee County meadow & native grass pasture land held near Wamego for Charles R. Pageleer. Auctioneers: Cline Realty & Auction, LLC.

March 23 — Oleen Brothers Production sale held at Dwight.

March 26 — Real Estate held at Green for Rick Friederich. Auctioneers: Clay County Real Estate, Greg Kretz, salesman & auctioneer.

March 28 — Real Estate consisting of a 35-acre farmstead with 2 BR house & buildings; farm equipment & collectibles held at Geneseo for Warren & Lena Campbell. Auctioneers: Oswalt Auction & Realty.

March 28 — 59.2 acres m/l of Republic County farmland & cropland held at Cuba for Lee King & Sherry McCune. Auctioneers: Midwest Land and Home, Jeff Dankenbring & Mark Uhlik.

March 28 — Estate auction held at Lone Star for Carl & Peggy Silvers Estate. Auctioneers: Elston Auction.

March 28 — 85 firearms (majority excellent to new), tractors, dozer, Harley Davidson motorcycle, trailers, trucks, machinery, collectibles, salvage machinery & much more held at Ozawkie for Jerald & Ivan Flory. Auctioneers: Edgecomb Auctions.

March 28 — 69.8 acres m/l of Marshall County farmland held at Marysville for Matt & Megan Smith. Auctioneers: Midwest Land and Home, Jeff Dankenbring, Mark Uhlik.

March 28 — Tractors, combine, trucks & machinery, motorcycles, antiques, collectibles, tools & more held West of Clay Center for Clarence & Marjorie Urban Estate. Auctioneers: Thummel Real Estate & Auction, LLC.

March 28 — Farm machinery, trucks, trailers, livestock equipment, farm tools & misc. held at Durham for the annual farm machinery & farm misc. auction held in conjunction with G&R Implementation. Auctioneers: Lepke Realty & Auction.

March 28 — Construction liquidation auction including a surplus of construction tools & other items held at St. George. Auctioneers: Foundation Realty, Morgan Riat.

March 28 — Hereford Production sale held at Haviland for Sandhill Farms.

March 29 — Linn Consignment auction held at Linn. Auctioneers: Raymond Bott Realty & Auction.

March 29 — Barber

items, railroad, dolls, toys, collectibles, signs, Coca Cola items, Kewpie doll collection, comic books held at Salina for Karen & Hershel Huffman. Auctioneers: Thummel Real Estate & Auction, LLC.

March 31 — Land auction selling 318 acres m/l of Lincoln County land & 1,013 acres m/l of Russell County land held at Wilson for T. Scott Soukup Estate. Auctioneers: Crossroads Real Estate & Auction, LLC & Ideal Real Estate, Joni Glaser, listing broker.

March 31 — Real Estate consisting of home with 3-5 bedrooms, oversized lot & more held at Wamego. Auctioneers: Crossroads Real Estate & Auction, LLC.

March 31 — 320 acres Coffey County diversified farm property held at New Strawn for Clara R. Williams Trust. Auctioneers: Swift-n-Sure Auctions & Real Estate. Brian Landis & Victor Edelman.

April 4 — Blacksmith tools, tractors, ATV, shop tools held south of Fairbury, Nebraska for the late Bruce Junker. Auctioneers: Raymond Bott Realty & Auction.

April 4 — Signs, toys, trailer, etc. held at Lawrence. Auctioneers: Elston Auction.

April 4 — Farm machinery, antiques & collectibles, automobiles held at Minneapolis for Gerald Newell Estate. Auctioneers: Bacon Auction Company.

April 11 — 146 acres m/l of irrigated Republic County land held at Courtland for Dale & Danell Strickler. Auctioneers: Midwest Land & Home, Mark Uhlik, Jeff Dankenbring.

April 11 — Guns, household, appliances, shop tools & equipment, boat & accessories, livestock equipment, large assortment of mechanics tools & equipment held at Bennington for Bill Whitman. Auctioneers: Bacon Auction Company.

April 11 — Fink Beef Genetics Spring Angus and Charolais Bull Sale held at Randolph.

April 18 — Machinery, tools, antiques held South of Barnes for Dennis & Judy Woerman. Auctioneers: Raymond Bott Realty & Auction.

April 18 — Auction held at Lawrence. Auctioneers: Elston Auction.

April 18 — Antiques & household held at Manhattan. Auctioneers: Foundation Realty, Morgan Riat.

April 18 — New Strawn Farm & Ranch Consignment Auction held at New Strawn. Auctioneers: Kurtz Auction & Realty. Sales manager, Richard Newkirk.

April 25 — 1800s Conastoga wagon (complete), buggys, horse equipment, antiques & collectibles held near Eudora for Elden (Denny) & Marilyn Lynn. Auctioneers: Thummel Real Estate & Auction, LLC.

April 25 — Farm auction held at Perry. Auctioneers: Elston Auction.

May 2 — Estate auction held at Lawrence for Swallow Estate. Auctioneers: Elston Auction.

## LAND AUCTION

2,112± Acres of Cropland, CRP, Pasture & Wildlife Habitat in 9 Tracts in WABAUNSEE COUNTY

FRIDAY, MARCH 6, 2020 — 2:30 PM

AUCTION LOCATION: 208 S. Main, Eskridge Senior Center, ESKRIDGE, KANSAS 66423

SELLERS: JUSTIN & BARBARA HILL and RICHARD W. PORTER

These properties offer you a great deal of diversity, with cropland, CRP, pasture and excellent hunting and wildlife opportunities! We have seen some great whitetail bucks, turkey and other wildlife. Be sure to check out these properties and see how they can fit with your existing ag operation or as an investment property with plenty of recreational opportunities. Centrally located within 35-40 miles of Topeka and not far from Manhattan, Emporia and Kansas City, you can be at any of these properties in a short time and enjoy them on a regular basis. We look forward to seeing you at the auction!

**SELLER: JUSTIN & BARBARA HILL**  
**TRACT #1:** 316.36± ac of native and mixed grass pasture.  
**TRACT #2:** 310.77± ac of cropland, CRP, hay, pasture & recreation.  
**TRACT #3:** 362.99± ac of cropland, pasture & recreation.  
**DIRECTIONS:** From Eskridge, KS, go east on KS-99 / 8 Mile Rd for approx. 4.2 mi to the northwest corner of tract #1 on the south side of the county road. Tract #2 and #3 are south of Tract #1.  
**TRACT #4:** 335.92± ac of cropland, pasture, hay & recreation.  
**DIRECTIONS:** From Tract #2, go west a half mi on Mourning Dove Rd to the southeast corner of the property.

**SELLER: RICHARD W. PORTER**  
**TRACT #5:** 232.52± ac of cropland, hay & recreation.  
**TRACT #6:** 206.01± ac of CRP, pasture & recreation.  
**TRACT #7:** 230.08± ac of recreation & pasture.  
**TRACT #8:** 39.2± ac of grass or building site.  
**DIRECTIONS:** From Harveyville, KS, go south on Harveyville Rd for approx. 0.2 mi, take a slight right onto KS-31 and continue for 1.0 mi, turn south on Miller Rd and continue south for 1.0 mi to the northwest corner of Tract #5 on the east side of the road, Tract #6 is east of tract #5, or back on Miller Rd, continue another 1.5 mi to Wilmington Rd, turn east and continue 0.25 mi to the northwest corner of Tract #8 on the south side of the road, or continue another 0.25 mi to the southwest corner of Tract #7 on the north side of the road.  
**TRACT #9:** 78.4± ac of cropland & recreation.  
**DIRECTIONS:** From Harveyville, KS, go north on Harveyville Rd for approx. 2.5 mi to the intersection of Harveyville Rd and Headwaters Rd, the property is on the southeast corner of the intersection.

See website for full listing & photos: [GriffinRealEstateAuction.com](http://GriffinRealEstateAuction.com)

RICK GRIFFIN  
 Assoc. Broker/Auctioneer  
 Cell: 620-343-0473  
 CHUCK MAGGARD  
 Sales/Auctioneer  
 Cell: 620-794-8824  
 Office: 305 Broadway, Cottonwood Falls, KS 66485  
 Phone: 620-273-6421  
 Fax: 620-273-6425  
 Toll-Free: 866-273-6421  
 In Office: Nancy Griffin Heidi Maggard  
 griffinrealestateauction@gmail.com

## FARMLAND AUCTION

THURSDAY, MARCH 19, 2020 — 7:00 PM

Held at ABILENE CIVIC CENTER, 201 NW 2nd Street — ABILENE, KANSAS

152± ACRES OF UPLAND FARMLAND

**Location:** 5 miles west of Talmage, KS on K-18 Highway

**Legal Description:** The Southwest 1/4 of Section 5, Township 12, Range 1 East of the 6th PM, Dickinson County, Kansas.

**Consisting of:**  
 Tillable Ground 86.2 ac. m/l  
 Pasture, Grass & Timber 60.6 ac. m/l  
 Waterways 5.2 ac. m/l  
**TOTAL 152 ac. m/l**

**Soil Types:** Mainly Irwin Silty Clay Loam with a small amount of Crete and Geary Silty Clay Loam.

**General Info:** A good upland farm with excellent location on blacktop K-18 Highway. Also offers excellent hunting and a great location for building.

**Taxes:** \$1,643.10 — 2019

**POSSESSION:** All open ground. Possession at closing.

**TERMS & CONDITIONS:** 10% due day of sale, balance due on or before closing date on or before April 20, 2020. Real Estate Taxes for 2019 paid by seller. Taxes prorated for 2020. Title Insurance will be used with the cost split equally between Buyer and Seller. Security First Title, Abilene, KS, will escrow the contract and earnest money. Escrow charges will be split equally between Buyer and Seller. Reynolds Real Estate & Auction Company will be acting as "Sellers Agents." Property sells in "as is" condition with no guarantees or warranties made by Seller or Auction Company. Announcements made day of auction take precedence over printed matter. All information given is from sources deemed reliable, but not guaranteed. Property sells subject to easements, restrictions, and reservations if existing.

**SELLER: SHARLYN K. REYNOLDS**

785-263-7151  
 888-263-7151  
 BROKER: John Kollhoff  
 785-263-7151  
 LISTING AGENT: Dan Reynolds  
 785-479-0203  
 AUCTIONEER: R.J. Reynolds:  
 785-263-5627  
[www.rrehomes.com](http://www.rrehomes.com)

## 232.7 taxable acres in Marshall County, KS Sold in 2 Tracts

LAND AUCTION  
 THURSDAY, MARCH 12, 2020 • 10:00 AM  
 Auction Location: Landoll Lanes, 2005 Center Street MARYSVILLE, KANSAS

Location: From Marysville on Hwy 36 go East to 12th Rd. or Oketo Rd., go North 2 mi. then West ¼ mi. on Indian Rd. Lays North of Indian Road.  
**TRACT 1:** Approximately 6.5-acre home site. Modern-style home built in 1962, 1674 sq. ft. slab, 1 bedroom, 2 full baths. A new septic system is required for this property as per the Marshall County Sanitation Department. Septic system will be the responsibility of the buyer. **Great location, only 2 ½ miles from Marysville.**  
**TRACT 2:** Approximately 226.2 acres farm ground.

**TRACT 3:** Combination of tracts 1 and 2.

**SELLER: GLENNA GALLOWAY ESTATE**

Auction by: JOE HORIGAN REALTY & AUCTION CO.

Joe Horigan, Auctioneer: 785-250-5148

For Complete Information, to view property & pictures:

[www.jhorigan.com](http://www.jhorigan.com)



# BAXTER BLACK

ON THE EDGE OF COMMON SENSE

## Boys Will Be Boys

"Boys will be boys," reflected Jack, as he told me a story from his youth. Seems when Jack was a teenager back in Ripley, Oklahoma, he and his teenage friend were serious about becoming bull

riders. They had helped fix up the local rodeo arena and that gave them chute privileges. One week they replaced a chute gate. They had made the replacement themselves out of oilfield

pipe, painted it and hung it up. As they were admiring their handiwork Jack remarked it was too bad they couldn't buck a real bull out of there for the inaugural 'grand opening'! His partner, Jack (also named Jack and hereinafter referred to as Jack Two) said, "Ya know, my dad just bought a brand new Charolais bull, I'll bet that sucker would buck!" Jack One agreed that it would sure be better than practicing on the buckin' barrel and wasn't it a coincidence that Jack Two's dad was outta town for a couple days?

A quick trip to the ranch and back soon had the big polled bull standing in chute number one. Jack Two set his rope and called for the bull. Jack One swung the new gate wide and Jack Two had a pretty good practice ride. They ran the bull back around for another ride but he was not nearly as cooperative in the chute. Matter of fact, he rammed his head sideways between the pipes and lifted the heavy gate right off the L-hinges on which it hung. Out across the arena he bucked with the ten-foot gate around his neck and layin' on his back. Jacks One and Two chased the

irate bull and cornered him. The bull turned, spotted his tormentors, lowered his head to charge and flipped straight over on his nose! It took several minutes of flopping around and pulling for the gate to come free. The bull was considerably agitated but just dazed enough so our two Jacks could load him back in the trailer and get him back home. Next day Jack Two's dad returned home. He saddled up and rode out to check the cows with

Jack Two's uncle. The bull charged the horses and chased them out of the pasture. After two days of this Dad decided they better sell the bull before someone got hurt. He explained to his son, Jack Two, that the bull must have got a hold of locoweed or maybe some kind of heavy metal poisoning which made him crazy. "Yeah," thought Jack Two, "Heavy metal, alright."

www.baxterblack.com

## 10, 12 & 14 Bale Hay Trailers



- Cradles can be lifted w/one hand • Cradles are removable
- Safety locks for cradles in both the up & down positions, located at the front of trailer
- 1-Year Mfg. Warranty on axles & tires • 2-Year Warranty on trailer
- Heavy duty tubular construction
- 10-bale trailer has 7,000 lb. tandem axle with brakes & 10 ply tires
- 12-bale trailer has 10,000 lb. tandem dual axle w/brake & 10 ply tires
- 14-bale trailer has 12,000 lb. tandem dual axle w/brake & 14 ply tires
- Comes with a spare tire
- Now have options of hydraulic dump & 14 ply tires

**DENNING MACHINE SHOP, INC.**  
Toll-Free: 866-293-5450  
THE WORKHORSE OF WESTERN KANSAS

## New Address?



**Let us know!**  
Contact Kevin to update your Grass & Grain subscription:  
agpress3@agpress.com  
785-539-7558  
1531 Yuma St.,  
Manhattan, KS 66502



SHER Rosebud 903G won reserve grand champion owned female at the 2020 Kansas Angus Futurity Junior Show, Jan. 26 in Hutchinson. Ben Nikkel, McPherson, owns the January 2019 daughter of PVF Insight 0129. She earlier won early calf champion. Ryan Rash, Crockett, Texas, evaluated the 67 entries.  
Photo by Jeff Mafi, American Angus Association

# Farmers & Ranchers AUCTIONS EVERY MONDAY & THURSDAY

**Selling Cattle every Monday Hog Sales on 2nd & 4th Monday of the month only!**

RECEIPTS FOR THE WEEK TOTALED 917 CATTLE & 119 HOGS.

STEERS				
300-400	\$176.00 - \$180.00	1 Red	Holyrod	1560@69.00
400-500	\$169.00 - \$174.00	1 blk	Lindsborg	1615@69.00
500-600	\$160.00 - \$171.00	1 blk	Abilene	1875@69.00
700-800	\$130.00 - \$134.50	1 blk	Durham	1365@58.00
800-900	\$129.00 - \$129.50	1 bwf	Abilene	1405@57.50
900-1,000	\$125.00 - \$126.50	5 mix	McPherson	1409@57.50

**THURSDAY, FEBRUARY 27, 2020:**

HEIFERS				
400-500	\$146.00 - \$151.00	2 mix	Canton	353@180.00
500-600	\$139.00 - \$144.00	2 mix	Tescott	305@176.00
600-700	\$137.00 - \$145.00	2 blk	Concordia	423@174.00
700-800	\$124.00 - \$127.75	5 blk	McPherson	506@171.00

**MONDAY, FEBRUARY 24, 2020:**

HOGS				
2 Fats	Burdick	355	@46.00	
3 Fats	Burdick	322	@38.00	
2 Fats	Burdick	293	@36.00	
2 Fats	Tescott	275	@35.00	
12 Fats	Tescott	270	@32.50	
2 Sow	Burdick	565	@24.00	
4 Sow	Abilene	525	@22.50	
1 Sow	Hutchinson	505	@22.00	
2 Sow	Lebanon	515	@22.00	

CALVES				
2 blk	Ellsworth	255	@550.00	
1 bwf	Hillsboro	195	@375.00	
1 blk	Wells	80	@310.00	

BULLS				
1 blk	Newton	2090	@86.00	
1 blk	Salina	2055	@86.00	
1 blk	Salina	1795	@85.00	
1 blk	Abilene	2300	@84.00	
1 blk	Salina	2200	@84.00	
1 blk	Ellsworth	1550	@78.00	

COWS				
1 blk	Durham	1800	@74.00	
1 blk	Holyrod	1625	@71.50	
3 mix	Salina	1712	@71.00	
1 blk	Delphos	1520	@69.50	

STEERS				
2 mix	Canton	353	@180.00	
2 mix	Tescott	305	@176.00	
2 blk	Concordia	423	@174.00	
3 blk	Hunter	555	@169.00	
3 blk	McPherson	550	@162.00	
2 blk	Ellsworth	555	@160.00	
7 blk	Brookville	591	@157.00	
40 mix	Halstead	739	@134.00	
10 Char	Tescott	813	@129.50	
5 mix	Minneapolis	806	@129.00	
5 blk	Minneapolis	916	@126.50	
44 mix	Inman	918	@125.25	

HEIFERS				
2 blk	Minneapolis	425	@151.00	
3 blk	Hesston	457	@148.00	
3 blk	Concordia	498	@146.00	
3 blk	McPherson	465	@146.00	
16 mix	Hutchinson	621	@145.00	
2 blk	McPherson	548	@144.00	
2 blk	Salina	485	@143.00	
2 mix	Moundridge	543	@140.00	
3 blk	Hutchinson	578	@139.00	
9 mix	Concordia	601	@135.00	
2 Char	Tescott	583	@134.00	
6 mix	Haven	678	@132.00	
9 blk	McPherson	662	@129.50	
62 mix	Salina	734	@127.75	
5 Char	Tescott	723	@124.50	
27 mix	Inman	707	@124.25	

# Livestock Commission Co., Inc. Salina, KANSAS

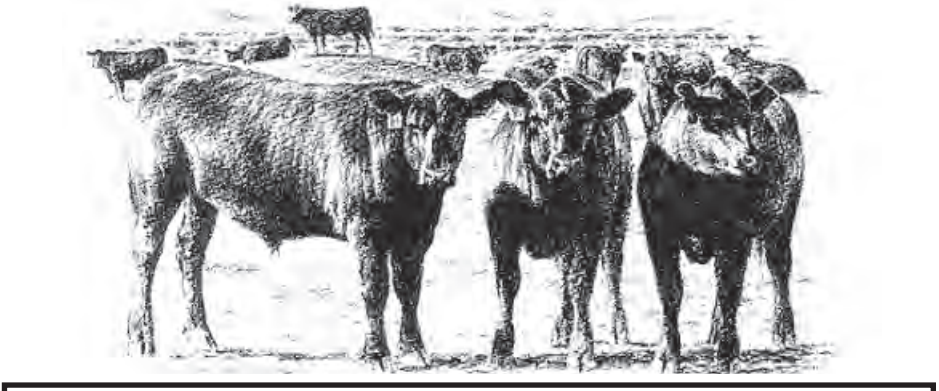
**SALE BARN PHONE: 785-825-0211**  
MONDAY — CATTLE • HOG SALE 2nd & 4th MONDAY  
Hogs sell at 10:30 a.m. on the 2nd & 4th Monday of the month.  
Cattle at 12:00 Noon. Selling calves and yearlings first, followed by Packer cows and bulls.

**THURSDAY — CATTLE ONLY**  
Selling starts at 10:00 a.m. Consign your cattle as early as possible so we can get them highly advertised.

**AUCTIONEERS: KYLE ELWOOD, BRANDON HAMEL & GARREN WALROD**  
For a complete list of cattle for all sales check out our website [www.fandrive.com](http://www.fandrive.com)

**CATTLE USA.com LIVE CATTLE AUCTIONS**  
FARMERS & RANCHERS HAS SWITCHED BACK to **Cattle USA.com** for our online auctions.

*It's time to start thinking about getting your horses consigned to the MAY SPRING SPECTACULAR HORSE SALE. Deadline is March 1st to consign. Contact Farmers & Ranchers for any information.*



**EARLY CONSIGNMENTS FOR THURSDAY, MARCH 5, 2020**

- 46 S&H off wheat, vacc, long time weaned, no implant, hotwire & bunk broke 650-750
- 25 S&H off wheat, vacc, long time weaned, no implant, hotwire & bunk broke 650-750
- 60 Black/Red/Char S&H home raised, vacc, long time weaned 500-700
- 60 BWF/RWF Heifers long time weaned, preg ck open 700-800
- 45 mix S&H home raised, long time weaned, vacc 550-650
- 22 mix S&H home raised, long time weaned, vacc 500-700
- 18 Black/BWF Heifers 800
- 20 S&H home raised, vacc, long time weaned, gtd open 600-800

**EARLY CONSIGNMENTS FOR TUESDAY, MARCH 17, 2020 COW SALE**

**BULLS:** Red Angus 17 months semen checked; 4 Char Bulls, 18 month old virgin, semen & Trich tested; (1) 5 yr old Hereford bull. **HEIFER PAIRS:** 5 Heifers bred black calving ease Angus bull; 20 Angus Heifer Pairs, OCV 45 day calves, AI sired Comrade, worked & vacc. **REPLACEMENT HEIFERS:** 6 Red Balancer Heifers, home raised, OCHV, pelvic measured; 1 blk Balancer Heifer, home raised, OCHV, pelvic measured; 60 Angus Heifers, One Iron, OCHV, Very Gentle; 40 Sim/Angus, home raised, OCHV, pelvic exam, Cow Camp sired 800+; 19 Hereford Heifers. **COWS/PAIRS:** 30 Fall calving 3-8 yr olds, bred blk Downy Ranch Angus bull; 50 Black/BWF Cows 3&4 yrs., All coming with 2nd or 3rd calf, Bred Angus April/May calvers; 10+10 blk Angus pairs, running age, home raised; 45 Black/BWF 4-6 yrs, Cole Origins, bred Gardiner Angus, calve April; 19+19 Registered Hereford pairs 5-9 yrs, 300-400 lbs calves; 5 Hereford bred cows; 20 Fall bred black cows 4-9 yr old, bred Gardiner bulls.

For information or estimates, contact:

**Mike Samples, Sale Mgr., Cell Phone 785-826-7884**  
**Kyle Elwood, Asst. Sale Mgr., Cell Phone 785-493-2901**

Check our listings each week on our website at [www.fandrive.com](http://www.fandrive.com)

Jim Crowther 785-254-7385 Roxbury, KS  
Lisa Long 620-553-2351 Ellsworth, KS  
Cody Schafer 620-381-1050 Durham, KS  
Kenny Briscoe 785-658-7386 Lincoln, KS

Kevin Henke H: 785-729-3473, C: 785-565-3525 Agenda, KS  
Austin Rathbun 785-531-0042 Ellsworth, KS

