

Kansas Hay Market Report

Ground alfalfa movement: Southwest/South Central Tonnage: 12,647/4,731 Last week: 12,229/4,567 Last year: 12,956/3,592 Hay trade is moderate. Demand is strong for dairy and grinding alfalfa, moderate for alfalfa pellets, prairie hay and stock cow quality hay. This week has brought sunshine, warmer temperatures and breezy weather keeping, hay producers, corn harvesters, and wheat planters busy. If it holds for a week the prairie hay harvest will be nearly finished. A lot of high moisture corn is being picked, and silage cutters are running full bore. Wheat planting is underway especially for those wanting Fall pasture. Army worms are showing up and should be watched especially in new seedlings. If you have hay for sale or pasture to rent or need hay or grazing, use the services of the Hay and Pasture Exchange website: www.kfb.org/hayandpasture/default.htm

Southwest Kansas: Dairy and grinding alfalfa steady to firm. Movement moderate. Alfalfa: Horse, small

square, old crop, 180.00-210.00, 2008 crop, 215.00-250.00; Dairy, Supreme 175.00-200.00, Premium 170.00-185.00, Good 150.00-175.00. Utility-Fair grinding alfalfa shipped in 125.00-140.00, at the edge of the field, 135.00-155.00. Ground and delivered locally to feedlots and dairies, 160.00-175.00. The week of 9/8-13, 12,647T grinding alfalfa and 1,437T of dairy alfalfa were delivered. Straw, good large bales 55.00-60.00, or 65.00-72.00 delivered, some 85.00 ground and delivered. Bermuda grass, Good small square 200.00, mid or large square 150.00.

South Central Kansas: Dairy and grinding alfalfa steady, alfalfa pellets steady to 5.00 higher. Movement moderate. Alfalfa: Horse, small square 200.00-220.00, mid or large square 185.00; Dairy, Supreme 170.00-195.00; Premium, 160.00-185.00, Good 145.00-170.00. Utility-Fair grinding alfalfa at the edge of the field 100.00- 130.00, 110.00-135.00 delivered. Ground and delivered locally to feedlots 120.00-140.00. The week of 9/8-13, 4,731T of grinding alfalfa and 1,167T of dairy alfalfa were delivered. Alfalfa pellets: Sun Cured 15% protein 180.00- 195.00; Sun Cured 17% 180.00-205.00; Dehydrated 15% 220.00; 17% 235.00, contracts to 240.00. Straw, good large bales 55.00-60.00.

Southeast Kansas: Alfalfa, brome and prairie hay steady. Movement moderate. Alfalfa: Horse and goat, 180.00-200.00. Dairy alfalfa, Supreme 185.00, Premium 175.00, Good 130.00- 150.00. Bluestem: Good, small squares 90.00-110.00, mostly 100.00, mid and large squares 80.00-90.00, large rounds 50.00-70.00, Mulch, large round 40.00-50.00. Brome: Small square Good 100.00-110.00, Good mid and large squares 85.00-100.00, an instance 145.00. Good large round 50.00-70.00.

Northwest Kansas: Dairy and grinding alfalfa steady. Movement moderate. Alfalfa: Horse, small square 200.00-275.00. Dairy, Premium-Supreme 175.00-185.00, Good 165.00, Fair 120.00-135.00. Utility-Fair grinding alfalfa at the edge of the field 90.00- 110.00; Ground and delivered to feedlots and dairies 130.00-140.00.

North Central-Northeast Kansas: Dairy and grinding alfalfa, prairie hay and brome steady. Movement moderate. Alfalfa: Horse small square 185.00-200.00, Mid square 165.00-185.00; Dairy, Supreme 170.00-200.00, Premium 160.00-170.00, Fair-Good 130.00-150.00. Utility-Fair grinding alfalfa at the edge of the field, 70.00-90.00, alfalfa ground-on- the-truck 90.00-110.00.

Scholarships awarded

The Westchester Foundation has announced six recipients of their 2008 Agricultural Scholarships.

The twelve recipients will each receive a \$1,500 scholarship that can be applied towards any college expense.

The outstanding recipients of the prestigious 2008 Westchester Foundation Ag Scholarships include two Kansas students, Leann Spinden, of Burns, will be a senior in Agricultural Education at Kansas State University. Lindy Wiggins, of Eureka, is a sophomore double majoring in Agricultural Communications and Animal Science at Oklahoma State University.

2-DAY ESTATE AUCTION

SUNDAY, SEPTEMBER 28 — 10:00 AM
MONDAY, SEPTEMBER 29 — 10:00 AM
1605 S.W. Randolph — TOPEKA, KANSAS

Lg. auction all out of a neat English Tudor-style home including Marlin OK Derringer pistol, circa 1863-1870; clear and colored glassware; H.P. china; Ironstone; Transferware; Flow Blue; pottery; costume jewelry; 3 pocket watches; pocket knives; smalls; large amt. of silverplate inc. fancy serving and accent pcs.; Christmas sterling silver dresser accessories; sterling and S.P. flatware; John F. Kennedy memorabilia; lamps; trunks; linens; hats; Oriental items; pictures

and prints in beautiful frames; postcards; books; stamp collection; Indian Head cents; Wheats; kitchen collectibles; feather tree; furniture inc. mahogany DR set; mahogany and burl BR sets; oak fern stand; Mission oak and walnut gateleg tables; wicker chair and ottoman; painted pcs.; iron crib; trunks; Singer sewing machine; silver chest and more; color TVs; tools; garage items; household items; **MUCH MORE!**

NELS PETERSON TRUST
PRUDENTIAL FIRST, REALTORS AUCTION DEPT.
Wayne Hunter, CAI, 785-554-3049
Gary Henson, 785-845-7855
Website: www.garyhenson.com

AUCTION

SUNDAY, SEPTEMBER 28 — 12:00 NOON

3349 SW Mariposa Place — TOPEKA, KANSAS

(West On 34th St. From 34th & Fairlawn)

FURNITURE, ELECTRONICS, EXERCISE EQUIPMENT, APPLIANCES, HOUSEHOLD, TOOLS, MISC.

Maple bed with matching dresser; 5-stack antique Oak bookcase; antique Oak rocker; china cabinet; 4 pc bedroom suite; **Beautiful Oriental carved liquor cabinet**; 80" Oak display case; 7-drawer corner chest-of-drawers; 54"X43" custom wood bathroom medicine cabinet; 2" Zenith TV; 2 recliners; Queen bed, chest & dresser with mirror; sofa; refrigerator; modern loveseat; deep freeze; 3 living room chairs; dining table & chairs; humpback trunk; small Oak desk; Oak bookshelf with bottom storage; 52" Eddie

Bauer Teakwood bench; smoked glass & dark Oak stereo cabinet; end & stand tables; bamboo serving cart; quilt rack; small trunk; wood card table; small wood cabinet; 3 Oak chairs; valet; porcelain top cabinet; trunk; coffee table; 2 stereo speakers time frame 350 (38" tall); 2" Kirsh Select hardwood blinds (85" wide X81" high); Designer Plaster of Paris fish; exercise bike; stool; child's rocker; Curtis Mathes turn table/radio & TV in cabinet; brass floor lamp; china; dishes; electric appliances; Corningware; Tupperware;

stemware; pictures; 2 brass lighting sconces with blown glass covers; 3 tract lighting; 5-blade Hunter ceiling fan; 6 interior mahogany finish doors; lamps; Prism sight impaired reading machine; Fostoria; glass roosters; water set; compotes; bowls; plates; candy dishes; creamer, sugar & tray; kitchen utensils; bedding; afghans; pots; pans; roaster; Rockwell 9" power saw; electric tools; saws; organizers; antlers; hammers; tools; ladder; nail keg; National Geographic collection in leather binding; miscellaneous items.

NOTE: Very clean Auction!

HARRIET E. GAY ESTATE

GANNON REAL ESTATE AND AUCTIONS
VERN GANNON, AUCTIONEER

785-539-2316 • MANHATTAN, KANSAS • www.gannonauctions.com



Don't Forget To Visit G&G Online!

The new Grass & Grain homepage offers free services available to all readers — print and online.

- Calendar of Events
- G&G Country weather information
- North America auction listings
- USDA Market Reports
- "Our Daily Bread" weekly recipe
- Photo of the Week
- Online classified ad placement
- Online subscription service

You can add the online version to any current print subscription for **ONLY \$24!**

Go To www.grassandgrain.com

AUCTION

SATURDAY, SEPTEMBER 27 — 9:30 AM

130 NW 82nd — TOPEKA, KANSAS

FURNITURE, TOOLS, ANTIQUES & COLLECTIBLES, HOUSEHOLD, PRECIOUS MOMENTS, TOYS, MISC

FURNITURE: Pine corner cabinet; Oak & pine com-modes; slant front desk; Oak shelf; bookshelves; curio cabinet; maple table & chairs; rocking chairs; side chairs; Oak desk; baby bed; chrome table; sewing baskets; coat rack; lamp tables; child's chairs; 8 trunks.

TOOLS: Craftsman 10" & 8" table saw; jointer; drill press; power washer; toolboxes; electric drills; sanders; circular saw; jig saw; hand tools; garden tools; sockets; dremel tools; metal shelf; step ladder; wheelbarrow; gas & electric chain saws; gas weedeater; leaf blower; extension cords; log chains and more.

ANTIQUES/COLLECTIBLES: 51 Precious Moments, many retired (call for list or on website); 20 boxes cookbooks; 100 plus cookie jars; miniature lamps; kerosene lamps; Fostoria; Fenton animals; pressed glass; depression glass; Wagner & Griswold skillet; cast iron muffin pans; cigarette lighters; tobacco tins; pipes; cigar boxes; perfume bottles; jewelry boxes; music boxes; hats & purses; pitcher & glass sets; stemware; hand painted bowls & plates; various china patterns; Pyrex & Fire King; silver & silverplate; brass; hammered aluminum; Collector plates; 75 plus dolls; 30 radios; banks; several busts; Pepsi & Coke trays; crock

bowls & jugs; Clock; sad irons; kitchen primitives; cast iron toys; paperweights; bookends; quilts; hankies; linens; bedspreads; costume jewelry; wall masks; figurines; egg crate; much more.

HOUSEHOLD & MISCELLANEOUS: Small kitchen appliances; 25 floor & table lamps; 100 plus pictures & mirrors; computers; VHS movies; Coleman lantern & stove; fishing poles & tackle; wrought iron fence sections; windmill; concrete planters; bicycles; bird cages; 100 plus boxes.

TOYS: 50 plus Barbie's; Nylint; Tonka; Buddy L; Ert; Tootsie Toy & etc.

NOTE: This is a partial list. Thousands of items, come spend the day. PS bring a truck!

BRIAN & KELLY HILDEBRAND

GANNON REAL ESTATE AND AUCTIONS
VERN GANNON, AUCTIONEER

785-539-2316 • MANHATTAN, KANSAS • www.gannonauctions.com



Tyson Foods announces expansion in Brazil

SPRINGDALE, Arkansas (AP) — Tyson Foods Inc. says it's bought two poultry companies and has acquired majority ownership in a third in southern Brazil, home to many major producers of corn and soybeans.

Terms of the deal were not disclosed.

The Springdale, Arkansas-based meat producer announced Thursday its agreements with the companies. Tyson says it will buy Macedo Agroindustrial and Avicola Itaipopolis, both in the state of Santa Catarina. Tyson

also acquired a 70 percent stake in Frangobras, located in the state of Parana.

Tyson's international president, Rick Greubel, says the company is expanding into Brazil because the country is the world's leading chicken exporter and third-largest chicken producer behind the United States and China.

Tyson, the world's largest meat company, had sales of \$26.9 billion in fiscal 2007. The company says chicken sales represented 31 percent of total sales.

"With the economic sta-

bility and a growing middle class, the per capita consumption of chicken will continue to increase in Brazil," Greubel said. "In addition, our Brazilian operations will give us greater access to markets that are currently buying little to no poultry from the U.S."

Tyson said current Macedo president, Joster Macedo,

will head all of Tyson's Brazilian operations.

"The current management teams as well as other jobs at all three companies are expected to remain in place as we move forward with expansion plans," said Greubel. "The transition to expanded production will be gradual with our focus on the long-term success of these operations."

Grass hay: Bluestem small square, Good 100.00, Mid square 80.00-90.00, large rounds 50.00-80.00. Brome: Good, small square, 100.00- 120.00, a little 4.00-4.50/bale, Mid squares, 90.00-120.00, large round, 50.00- 75.00, some horse quality 45.00/large round bale delivered, stock cow 36.00/bale delivered. Straw small square 3.00-3.50/bale, large bales 50.00-55.00/T, some ground and delivered 92.00.

***Prices are dollars per ton and FOB unless otherwise noted. Dairy alfalfa prices are for mid and large squares unless otherwise noted. Horse hay is in small squares unless otherwise noted. Prices are from the most recent sales.

*RFV calculated using the Wis/Minn formula. **TDN calculated using the Western formula. Quantitative factors are approximate, and many factors can affect feeding value. Values based on 100% dry matter (TDN showing both 100% & 90%). Guidelines are to be used with visual appearance and intent of sale (usage).

The Kansas Hay Market Report is provided by the Kansas Department of Agriculture with technical oversight from the USDA Agricultural Marketing Service.

grassandgrain.com
place a classified ad renew a subscription

FARM ITEMS & PERSONAL PROPERTY AUCTION
SATURDAY OCTOBER 4 — 10:00 A.M.
627 Market Street — PORTIS, KS
Will run 2 rings inside and out starting at 10:00 A.M. Larger items outside will sell at 12:30 P.M.

TRACTORS: 1997 Belarus w/ GL 520 305 hrs. Model 8311 Farmhand Loader w/ 8' Bucket, 3 pt. 16.9 Rear Tires SN 200166* Case International 235 w/ KMW 90 Loader 285 hrs. *JD 4010 w/ Dual Loader 18.4 R 34 Tires, 2587 hrs. SN 18774* Ford 8N Tractor SN 4013.

COMBINES & TRAILERS: JD 7720 w/ 224 Platform & Chaffer & Chopper SN 409922, Tires F 24.5-32 - R 9.00-24 * JD 7720 w/ 224 Platform, Chaffer & Chopper Tires F 24.5 -32 R 11.25-24 SN 411175 (approx. 3800 hrs. on both combines)* JD 220 Flex Head SN 278241* (2) 4 Wheel Header Trailers.

FARM EQUIPMENT & ITEMS: Woods 8' Rear Blade RB800* Ford 105 5' Tiller* 6' Cimaron Rotary Mower* 4' Rotary Mower* 2 Wheel Bale Carrier* Box Scraper* 21' Krause Disk w/ Drags Model 1404* Milo Guards*Mineral Feeder* Self Feeder*JI Case Sulky Plow w/ Tool Box* Rake Wheels* Mower Wheels, etc.*

BUGGY: Dr's Buggy w/ Top and Shaft, good condition* Wooden Wagon Wheels*2 Wheel Wagons.

VEHICLES: 4-WHEELER, MOTORCYCLE & MOWERS: TOOLS: MISCELLANEOUS ITEMS: FURNITURE: ANTIQUES-PRIMITIVES-COLLECTIBLES: MISC. HOUSEHOLD ITEMS: GUNS: HARDWARE & CONSTRUCTION ITEMS.

BILL MANS ETAL
SALE CONDUCTED BY:
WOLTERS AUCTION & REALTY
Box 68, 627 Market St. • Portis, KS 67474
Phone No. Office: 785-346-2071
• Home: 785-346-2524
Toll-Free: 866-346-2071 • Cell: 785-545-7097
email: wauction@ruraltel.net
website: www.woltersauctionandrealty.com
Col. Jim Wolters, Broker & Auctioneer
Col. Rich Fairbanks, Assisting Auctioneer

480 Acres Lyon County **Real Estate Auction** **GRASS, STOCKED LAKE, TIMBER & CREEK**

MONDAY, OCTOBER 27 — 7:30 PM
Held at the Rodeway Inn, 3181 West US Highway 50 in
EMPORIA, KANSAS

The auction will be held in the Bluestem Room.



LEGAL DESCRIPTION: The Northwest Quarter, the South Half of the Northeast Quarter, the Southeast Quarter and the East Half of the Southwest Quarter, all the above in Section 11, Township 16 South, Range 10 East of the 6th P.M., Lyon County, Kansas — 480 acres more or less.

LOCATION OF THE PROPERTY: The property is located 1/2 mile north of the Intersection of the Americus Road and US Highway #56. Go 1/2 mile north on Road F — Property is on the west side of the road.

TYPE OF PROPERTY: This parcel has it all when it comes to hunting and fishing. There is a 10 acre lake that was built within the last 8 years and then stocked with Walleye, Channel, Smallmouth Bass, Bluegill and Crappie. This is one of the very best fishing lakes in Eastern Kansas. The balance of the land is native grass with the right amount of timber in the draws. Bluff Creek cuts through the northwest corner of this tract. There is deer, turkey and prairie chicken plus other wildlife.

TERMS: Seller requires 20% earnest money payable on the day of the sale with the balance due in full at the time of closing—approximately 30 days.

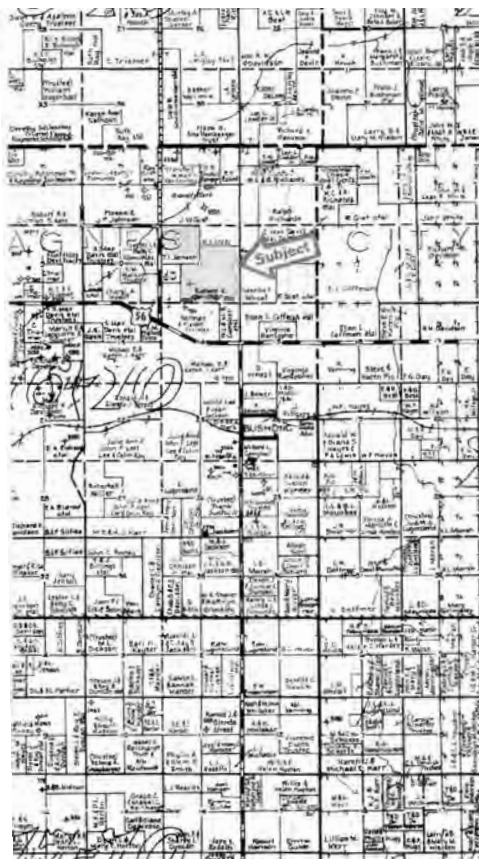
CONDITIONS: This sale is subject to all easements, restrictions, covenants, leases and zoning regulations of record.

MERCHANTABLE TITLE: The Seller agrees to furnish a Title Insurance Policy for the amount of the purchase price with the cost split equally between the Buyer and the Seller.

POSSESSION: The Buyer will receive full possession of the property at the time of closing.

MINERALS: All the Seller's mineral interests transfer with the Real Estate at the time of closing.

TAXES: The Seller will pay the 2008 taxes. There will be no pro-ration of taxes.



ANNOUNCEMENTS: To obtain more information or make arrangements to view the property please call the selling agent at the listed phone numbers. All announcements the day of the sale take precedence over all previous printed material or advertising. Joe Biggs and Associates, Inc. is the agent for the Seller in this transaction and does not represent the Buyer. All information is obtained from sources deemed to be reliable but are not guaranteed by the Seller or the Selling Agent. This sale is not subject to the Buyer obtaining financing. All financial arrangements should be made prior to the sale. The Sellers and the Selling Agent are not responsible in case of accidents.

AUCTIONEER'S REMARKS: This is one of the finest hunting and fishing properties to be offered for sale at Public Auction in Eastern Kansas. The lake was built and developed with professionals overseeing the project from the beginning. The lake has been stocked by Wallace Fish Farm and they have been very active in the management of the property. The grass has several draws with timber in abundance for deer, turkey and quail. There is prairie chicken also. Live water is in the northwest quarter plus some smaller ponds. The property has electricity, road access and located in the Flinthills. This is a must see property. Come to the sale prepared to buy. WE APPRECIATE YOU BEING THERE.

SELLER:
BLUEJACKET FORD L.L.C.
SELLING AGENT:
Joe Biggs & Associates, Inc.
1875 19th Road NE
Waverly, Kansas 66871
(785) 733-2893 Business, (620) 343-0670 Cell,
www.joebiggsandassociates.com

AUCTION
SATURDAY, OCTOBER 4 — 10:00 AM
115 Olive Street — BELVUE, KANSAS
REAL ESTATE: 1:00 PM

LEGAL: The North One Hundred twenty five feet (N125') of Block Twenty Five (25) in Paschall's Addition to Belvue, being a part of the Northwest Quarter (NW1/4) of the Northwest Quarter (NW1/4) of Section Three (3), Township Ten (10) South, Range Eleven (11) East of the 6th P.M., in Pottawatomie County, Kansas.

GENERAL DESCRIPTION: 2 story, 4 bedroom home and large vacant house on south lot to be sold separately.

TERMS: 10% down day of sale, balance due on or before November 4, 2008. Possession at closing. Seller and buyer each to pay one-half of title insurance and escrow fees. 2008 taxes and prior to be paid by seller. 2007 taxes were \$629.38. Property to be sold "as is" with all inspections to be conducted by buyers prior to auction. All financing to be in place prior to auction. Statements made day of auction take precedence over all printed material. Not responsible for accidents or loss.

GUNS
Stevens 12 ga.pump; Savage 22/410; A Richard/Damascus double barrel shotgun; 2 Ward Westernfield 12 ga.; 3 Stevens 22 LR; Hopkins & Allen 22LR; Savage 16 ga.; H2R 12 ga.; Coast to Coast 22LR; Stevens 20 ga.; Codey 12 ga.; Mossberg 16 ga. bolt; Diamond Arms 12 ga.; 2 Winchester MDL 94; 2 Stevens 12 ga.; Victory Arms 12 ga.; Winchester MDL 06 22; Mossberg 12 ga.; Winchester 30-30; Stevens 410; Remington 22LR; Ward Westernfield 22LR; Daisy BB gun; H&R 12 ga.; Stevens 410; Higgins 12 ga. bolt; Savage pump 22; JC Higgins 22; Iver Johnson 32; H&R 38; Winchester 44; 2 Winchester handguns, still in boxes; regular ammo; military ammo, not loaded.

LARGE ASSORTMENT OF COLLECTIBLE COINS.

PICKUPS
Red 1998 Ford pickup, XLT 150, V-8, auto; white 2002 Chevy pickup 150, V-6, auto.

CARPOR
14'x20'.

HOUSEHOLD & MISC.
Roper refrigerator; Speed Queen washer; Maytag dryer; elec. sewing machine; Tru-tone old radio; wooden bed & dresser set; 4-drawer dresser; end tables; 2-drawer mirror chest; metal step chair; Emerson microwave; (2) 4-drawer chests; coffee tables; lamps; stuffed chairs; Hoover sweeper; dishes & cookware; quilts; towels; wood storage cabinet; knee hole desk; 2-drawer file cabinet; exercise bike; Avon dolls; Avon stein collection; old army clothes; baby high chair; old redwood chair; old bottles; 4 boxes pen & pencil collections; thousands old collectible pens; old marbles; Budweiser signs; 2 barn antique lanterns; many old skeleton keys; many old records; Johnny Cash train track; many Mason canning jars; lots old calendars; old Life magazines; gun cabinet; McCall 7-drawer cabinet; garden tools; step ladder; metal detector; wheelbarrow; porch chairs; large selection hand tools; Kraft 10" table saw; Power Kraft air compressor; Sears air compressor; 2 pieces scaffolding; many jars nails & screws; fishing poles and many other various items.

Lunch served.

WALT E. DINGER ESTATE
Personal Property Auction conducted by:
RAYMOND PAGELER AUCTIONS - 785-456-9930
Real Estate by Wilson Real Estate, Inc.
Call for questions and viewing: 785-456-2073

Farm groups worried about labeling law coming in play

WASHINGTON (AP) — Farm groups are protesting the Agriculture Department's use of a new food labeling law, saying it has loopholes that could confuse consumers about where their meat comes from.

National Farmers Union President Tom Buis and other farm groups said the department has written the law — which passed with widespread support in the federal farm bill earlier this year — in a way that will allow meatpackers to avoid labeling packages of meat as exclusively U.S. products.

The law is scheduled to take effect at the end of the month.

At issue are the new country of origin labels on fresh meats, an issue long debated by Congress. The labels are favored by High Plains ranchers who own small operations and compete with Canadian beef. The leading opponents have been grocery stores and large meatpacking companies — many of whom mix U.S. and Mexican beef — and other businesses involved in getting products to supermarkets.

Those groups have said the tracking and the paperwork needed to comply with the law is would be too burdensome and would lead to higher prices. They agreed to a compromise that ended up in this year's farm law after days of negotiations.

The compromise laid out different types of labels, including one that would tag meat from animals that are born, raised and slaughtered in the United States as products of this country. Another label would spell out multiple countries of origin, such as "Product of U.S., Mexico and Canada."

Farm groups say the new law as written by the Agriculture Department would allow meatpackers to label all beef and pork with multiple countries of origin — even meat that was born, raised and slaughtered in the United States. That could make it easier and cheaper for the meatpackers but eliminate the competitive advantage for ranchers who raise the U.S. meat.

"USDA has created a loophole big enough to drive a truck through, violating the spirit, letter and intent of the law and deceiving consumers who have consistently shown support for buying U.S. products," Buis said. "This is about truth in labeling."

Billy Cox, a spokesman for the Agriculture Department's Agricultural Marketing Service, said the law is still under discussion.

"We do take it seriously," he said of the farm groups' complaints.

Senate Agriculture Chairman Tom Harkin, D-Iowa, said the department

"seems to be taking liberty with their interpretation" of the law passed by Congress.

"That goes against the spirit of the law and the negotiated settlement between producer and packing industry representatives," Harkin said.

Sen. Jon Tester, D-Mont., has written Agriculture Secretary Ed Schafer to ask him to fix the problem.

Schafer, a former North Dakota governor, also has some pressure from his home state, where the labeling law is popular.

"Surely Secretary Schafer knows farmers, ranchers, and consumers all have worked hard to secure (country of origin labeling) as a way to clearly identify food products, whether those products are from overseas sources, specifically U.S. in origin, or a blend," said North Dakota Farmers Union President Robert Carlson. "To allow meat packers to exploit this loophole means USDA is catering to the packers, rather than following the intent of Congress, consumers, farmers and ranchers."



Grand champion Gelbvieh bull at the Kansas State Fair was an entry by Circle S Ranch, Canton. Pictured from the left are Tyler Unruh, Doug Sanford, judge Joel Judge and John Shearer at the halter.

grassandgrain.com

AUCTION

SATURDAY, SEPTEMBER 27 — 9:30 AM
Platte Co. Fairgrounds — TRACY, MO
(Exit 20 from I-29)
LARGE AUCTION

ANTIQUES, COLLECTIBLES & HOUSEHOLD
Dep. glass; Jewel T; Tools, Colt 45 Mod. NIB, No. 11513N70 and BB guns; coins and paper currency; Disney, McDonalds and Coca Cola items.

www.jjauction.com for pictures and listing.

TERMS: Cash or check with ID. Preshowing: Sept. 26th, 5-7 pm.

J & J AUCTION, LLC

Jerry Cox, 816-640-2523 or 816-392-4773
Jack Swindler, 816-858-2715 or 816-830-9885

VINTAGE & RETRO CLOTHING & ACCESSORY AUCTION

SUNDAY, SEPTEMBER 28 - 12 NOON
1401 NE Winfield — TOPEKA, KANSAS

Fantastic selection of wonderful clothes from the 20's to the 70's from Margaret Burke and Helen Estes Estates. From flapper to retro 70's formals, day dresses, suits, blouses, skirts, slips, coats and furs. Huge variety of hats in all shapes and colors - felts, furs,

straws, vinyl, lace and linen. 100's of shoes, purses, and scarves. Also a large collection of vintage jewelry with rhinestones, sterling silver, gold, watches, some precious stones, Victorian pins, some Eisenberg, and many sets.

See oldemillauction.com for many pictures and list, or call for sale flyer. Sue Metzger, auctioneer, 785-233-7700 weekdays, or 608-4795.

JAMISON

HEREFORDS QUARTER HORSES

A BREEDERS AND RANCHERS PRODUCTION SALE

THURS. **OCTOBER 2, 2008**

11 AM (CDT) • AT THE RANCH
Performance Horse Preview • Wed., Oct 1

65 HEREFORD FEMALES

50 Bred Replacement Hfrs • 15 Fall Calving Cows

100 QUARTER HORSES

Ranch/Performance Geldings
2008 Foals • Broodmares

PERFORMANCE RANCH HORSES OF THE HIGH PLAINS



SINCE 1944...
A respected cowherd and premier Hereford performance bull breeder!

RANCH HORSES ...OUR SPECIALTY



Doc Bar, Driftwood and Hancock bred horses from the hard grass, canyon country of Western Kansas!

PC Citisun Cline Buckskin Colt
Future stallion ...powerhouse, young Quarter Horse • Invest in his future!



JA RAINY DRIFT
2002 Dun Gelding

• TR Special Drift gelding • 14.3 hh.
• "All-American," do-it-all rancher
• Cowy, smart, top family mount!



JA RAMON DRIFTER
2002 Gray Gelding

• Blues Orphan Drift x Special Effort gmdgr.
• 15.2 hh. • One of the best anywhere, ranch rodeo competitor, roper, very broke!



7519

Sire • CL1 Domino 4134P
BW 2.5 WW 56 YW 88 MILK 22 M+G 50
Bred to HH Advance 286M

www.jamisonherefords.com

Gordon Jamison & Sons
785/754-3639

2271 County Rd. 74
QUINTER, KANSAS 67752

UNITED LIVESTOCK BROKERS, INC.
Jay George 605/391-6230 • Rapid City, SD

STOP

Water from coming in your Basement or Grain Elevators

I will pump gel (Oilfield gel) under your floors and/or behind your wall to fill any space or crevice where water can creep into your basement or grain elevators. All work guaranteed.

DON'T WAIT.

CALL BILL NICHOLS WATERPROOFING NOW
1-800-215-0537

8 a.m.-6 p.m. Monday thru Saturday

*Free Estimates-No Excavating * Don't wait until it floods again *

TRACTORS

NH TS115A, C&A, FWD
NH TN65, 4WD, Open
NH TC21D
Ford 1920
Ford 7700/Ldr.
Ford 901/Ldr.
Ford 5000, Diesel
Ford 4000
Ford 3000
Ford Jubilee
Ford 8N
Case JX95, FWD, Ldr.
Case CX100
Case 1030
Case 1370
Case 1690
JD 4320/Ldr
JD 2640
JD 4630
MF 1135
IH H
Cat MT745

Bobcat T190, Track
Bobcat 430 M. EX
Scat Track 1700C
JD 325 Skid Steer
JD CT332 CTL
Case 450

COMBINES & WAGONS

NH TR98, FWD
NH TR89, FWD
Case 2388, FWD, 2004
Case 2388, FWD, 1998
Case 1660
EZ Trail 710
Parker 624 Cart
PLANTERS & TILLAGE
2 - IH 5100 Drills w/Hitch
Case IH 530B Ecolo Tiger
Kinze 3650 16/31
Kinze 2600 12/23
Kinze 2500 8/15
JD 7000 6 Row
JD 331 Disc

HAY TOOLS

NH BR780 R. Baler
NH 456 9' Sickle
JD 704 14Wh
H&S 12W Rake
Vermeer WR22 Rake
Hesston 3982 12Wh
Rhino 10' Mower

INDUSTRIAL

Bobcat S250
Bobcat S185
Bobcat S175
Bobcat 773
Bobcat 553
Bobcat 607 Backhoe

Emergency After Hours Parts

Planting, Haying & Combining

Call 816-724-1573

There will be a \$10.00 Service Charge for Fuel and Time

Visit us at: www.earleytractor.com

816-632-7277

EARLEY TRACTOR **CASE II**
Cameron, MO **AGRICULTURE**



Sankey's 6N Ranch, Council Grove, owns the overall supreme champion bull shown at this year's Kansas State Fair open class beef show in Hutchinson.



McCurry Bros. Angus exhibited the overall supreme champion beef female shown at the 2008 Kansas State Fair completed recently in Hutchinson. This was the first year for a supreme champion animal to be selected from the open class entries.

SUBSCRIBE TO GRASS & GRAIN 785-539-7558
or online at: grassandgrain.com

**970 ACRES
CHASE
COUNTY**

Real Estate
Auction

**FLINTHILLS
GRASS IN
1 TRACT**

THURSDAY, OCTOBER 30 — 1:30 PM
Swope Park, Community Building in
COTTONWOOD FALLS, KANSAS



LEGAL DESCRIPTION: All of Section 26 and the East Half of Section 27, Township 20 South, Range 9 East of the 6th P.M., Chase County, Kansas — 970 acres more or less.

LOCATION OF THE PROPERTY: From Saffordville, Kansas — go 1 1/2 miles south, go east 1 mile to road YY, turn south for 6 1/2-7 miles. The property is on the west side of the gravel road and borders the Kansas Turnpike on the north. Watch for signs.

TYPE OF PROPERTY: This property is all native Tallgrass Prairie with several ponds plus good fences. This property is subject to a Grassland Reserve Program except for 13.4 acres located along the road to the east. This easement does not hinder or restrict the customary or normal cattle grazing operations. The 13.4 acres that are not in the Grassland Reserve Program can be utilized for Pens, Barns, Homestead and Outbuildings.

This is an outstanding tract of Flinthills Grass that has been managed and in future years this practice will be continued by the new owners.

TERMS: Seller requires 20% earnest money payable on

the day of the sale with the balance due in full at the time of closing—approximately 30 days.

CONDITIONS: This sale is subject to all easements, restrictions, covenants, leases and zoning regulations of record.

MERCHANTABLE TITLE: The Seller agrees to furnish a Title Insurance Policy for the amount of the purchase price with the cost split equally between the Buyer and the Seller.

POSSESSION: The Buyer will receive full possession of the property at the time of closing.

MINERALS: All the Seller's mineral interests transfer with the Real Estate at the time of closing.

TAXES: The Seller will pay the 2008 taxes. There will be no pro-ration of taxes.

GRP: (Grassland Reserve Program) This property is subject to a 2005 GRP contract in which the intended purpose is to preserve and maintain the grassland and other conservation values of this property. This easement does not affect the overall operation of this land. For more details, contact the Selling Agent.

ANNOUNCEMENTS: To obtain more information or make arrangements to view the property please call the selling agent at the listed phone numbers. All announcements the day of the sale take precedence over all previous printed material or advertising. Joe Biggs and Associates, Inc. is the agent for the Seller in this transaction and does not represent the Buyer. All information is obtained from sources deemed to be reliable but are not guaranteed by the Seller or the Selling Agent. This sale is not subject to the Buyer obtaining financing. All financial arrangements should be made prior to the sale. The Sellers and the Selling Agent are not responsible in case of accidents.

AUCTIONEER'S REMARKS: This is one of the better Tallgrass Prairie Pastures to sell the last few years. This land is crossfenced into two pastures with good fences and excellent water. The quality of grass is exceptional and cattle have really performed on this grass. If you are in the market for some quality Flinthills grass with good fences, good water and road access on the east side, COME to this sale prepared to Buy. COME TO THE SALE—WE APPRECIATE YOU BEING THERE.

SELLER:
Mike and Jan McNiece

SELLING AGENT:
Joe Biggs & Associates, Inc.
1875 19th Road NE
Waverly, Kansas 66871
(785) 733-2893 Business, (620) 343-0670 Cell,
www.joebiggsandassociates.com

purple wave
auction®

UPCOMING
AUCTIONS



THURSDAY, SEPTEMBER 25 | 10 A.M.
**KANSAS MULTIPLE LOCATION
INTERNET ONLY AUCTION**

appliances, automobiles, automotive, computers, electronics, farm, framed prints, furniture, home improvement, household items, industrial, motorcycle apparel and helmets, office supplies, printing equipment, retail displays, sporting goods, tools, toys



SATURDAY, SEPTEMBER 27 | 10 A.M.
**AIRCRAFT & AVIONICS
INTERNET ONLY AUCTION**

aircraft, aircraft parts, industrial, sporting goods. visit purplewave.com for a complete catalog.



WED., OCTOBER 1 | 4 P.M.
REAL ESTATE AUCTION

4840 199TH TERRACE | LUCAS, KANSAS

4840 199th Terrace, Lucas, KS. This home is approximately 4300 sq. ft. located on 5 acres at Wilson Lake. There is a spectacular view of the lake from the property and the surrounding area. for more information: call 785.621.4725, email hays@purplewave.com or visit purplewave.com

TUES., OCT. 28 | 2 P.M.
**KANSAS MULTIPLE PROPERTY
REAL ESTATE AUCTION**

12136A Bouchey Rd., Maple Hill 5,188 sq. ft. lodge house with 4 bedrooms and 4 baths and huge great room. 86 +/- acres featuring a 30,000-gallon heated, in-ground pool, bath house, cabana, wet bar and hot tub; full, regulation football field, baseball field, tennis court, basketball court and horseshoe pit; nature trails; decks, fire pit and sun room; two 2.5-acre ponds and a smaller pond with docks, sand beaches and more, 3-car garage, a heated 1,728 sq. ft. berm garage and 2,432 sq. ft. shop garage.

13405 Louisville Rd., St. George 160 +/- acres, tillable crop land, CRP and pasture, 3 bedroom ranch home and 40' x 50' metal building, Rock Creek school district, blacktop road access on west side of property. **Open houses:** Sunday, October 5, 2 - 4 p.m. and Tuesday, October 14, 5 - 7 p.m.

11201 Erpelding Rd., Leonardville 155 +/- acre farm, 4 bedroom/2 bath home with 2 barns and mature trees, tillable and pasture land with new fence on east side of pasture, borders Leonardville Golf Course. **Open houses:** Sunday, September 21, 2 - 4 p.m. and Tuesday, October 21, 5 - 7 p.m.

903 Elmhurst Blvd., Concordia Dual apartment house: main floor and basement, 2 bedrooms, 2 baths, 2 kitchens, new roof, siding, and windows, storage shed, fully leased/occupied, nice neighborhood. **Open house:** Thursday, October 16, 1 - 4 p.m.

1544 Sheridan, Jewell double car garage, nice & quiet neighborhood, solid, well-built home. Inspections will be by appointment only. Please contact Dave Sommers at 785.341.9238 for more information.

523 Riley Ave., Ogden Fantastic commercial location, great Fort Riley traffic frontage, large parking lot and drive-through windows. **Open house:** Tuesday, October 14, 2 - 5 p.m.

2076 First St., Miller 6 lots on 1/2 city block, mature maple, walnut, apple and pecan trees, attached shop/garage, detached large shop and storage shed. Inspections will be by appointment only. Dave Sommers, 785.341.9238.

Auction location
825 Levee Drive | manhattan, Ks

BID NOW AT
www.purplewave.com

BENNETT AUTOPLEX INC.

651 S. OHIO - SALINA, KS
800-569-5653

GMC
WE ARE PROFESSIONAL GRADE. www.bennettautoplex.com



ALL IN STOCK GMC SIERRA'S

Employee Price with up to \$5,000 in rebates*

Offer ends 9-30-2008. See dealer for details.

QUALITY PRE-OWNED TRUCKS

- 2006 Chevrolet Z-71 35K
- 2006 Dodge Ram Diesel 26K
- 2005 GMC Sierra Diesel 9K
- 2005 Chevrolet Crew LT 41K
- 2005 Dodge Ram Reg. 17K
- 2005 Chevy 2500HD Diesel
- 2004 GMC 3500HD Diesel

2008 CHEVROLET SILVERADO 2055HD

Duramax diesel, loaded, trl. pkg., 4x4



MSRP: \$49,160
Employee Price: \$38,038*

2008 CHEVROLET 3500HD



4x4 Duramax, Trailer Package

MSRP: \$40,788
Employee Price: \$30,381*

GREAT SELECTION OF USED TRUCKS

- 2007 Chevy 2500HD Reg. 17K
- 2007 Chevy 1500 EXT 41K
- 2006 Chevy 2500HD Crew Duramax
- 2006 Chevy 1500 Crew 32K
- 2005 Chevy 3500HD Crew ... \$18,495
- 2005 Chevy 1500 Crew
- 2004 Chevy 2500HD Reg. 63K
- 2004 Ford F150 EXT 42K
- 2004 Chevy 2500HD EXT 70K
- 2003 Ford F150 Reg. 70K
- 2002 GMC 1500 Reg. 89K

Offer ends 9-30-2008. See dealer for details.

BENNETT AUTOPLEX-MINNEAPOLIS
107 NORTH SHERIDAN, MINNEAPOLIS, KS
800-750-8282

Chevrolet-Buick-Pontiac
AN AMERICAN REVOLUTION
www.bennettautoplex.com

Farmers & Ranchers

AUCTIONS EVERY MONDAY & THURSDAY

Selling Hogs & Cattle every Monday & Stocker-Feeder Cattle every Thursday

IN STOCK TODAY: Call 785-825-0211

- 1 - 7'x20' Metal Top Gooseneck Trailer
- 1 - 6'8"x24' Canvas Top Gooseneck Trailer
- 1 - 25' Contractor Flatbed Trailer with 5' Self Clean Dovetail
- 2 - 750 lb. Trip Hopper Feeders
- 1 - 1,000 lb. Trip Hopper Feeder

On September 30th, 2008 ALL LIVESTOCK are REQUIRED to have a Country of Origin Affidavit. Farmers & Ranchers Livestock will have these affidavits available for each and every producer to sign at the unloading docks or in the office. If you have any questions, please call Farmers & Ranchers at 785-825-0211.

Receipts for the week totaled 3,256 cattle and 366 hogs. Butcher hog top on Monday was \$47.50. Compared with last week steers and heifers 300-500 lbs. no test; steers 550-750 lbs. \$5.00-\$7.00 lower; steers 750-950 lbs. \$2.00-\$3.00 lower. Heifers 500-700 lbs. \$4.00-\$6.00 lower; 700-950 lbs. \$4.00-\$7.00 lower.

Livestock Commission Co., Inc.

SALINA, KANSAS

SALE BARN PHONE: 785-825-0211

MONDAY — HOGS & CATTLE
Hogs sell at 10:30 a.m. Cattle at 12:00 Noon. Selling calves and yearlings first, followed by Packer cows and bulls.

THURSDAY — CATTLE ONLY
Selling starts at 10:00 a.m. Consign your cattle as early as possible so we can get them highly advertised.

— AUCTIONEERS —
KYLE ELWOOD, GARREN WALROD & RUSTY TAYLOR

HEIFERS		COWS	
1 blk, McPherson 310 @ 117.00	1 red, Gypsum 1365 @ 57.50		
8 blk, Manchester 513 @ 109.00	1 bwf, Longford 1315 @ 57.00		
7 blk, McPherson 471 @ 107.00	1 blk, Ellis 1855 @ 56.50		
6 blk, McPherson 548 @ 106.50	4 mix, Gypsum 1514 @ 56.00		
8 mix, Beloit 507 @ 106.50	1 rwf, Manchester 1490 @ 56.00		
6 mix, Brookville 513 @ 106.00	2 mix, Longford 1930 @ 55.50		
4 blk, Newton 500 @ 106.00			
2 blk, Gypsum 600 @ 104.00	BULLS		
19 blk, Tescott 686 @ 103.10	1 blk, Ellsworth 1830 @ 75.00		
9 blk, Galva 727 @ 103.00	1 blk, Clay Center 2265 @ 74.00		
57 blk, Sedgwick 706 @ 102.25	1 blk, Brookville 1845 @ 74.00		
18 blk, Marion 734 @ 102.10	1 blk, Clay Center 1560 @ 73.50		
10 red, Lyons 692 @ 102.00	1 blk, Concordia 2060 @ 73.00		
10 blk, Oak Hill 686 @ 102.00	1 blk, Salina 1650 @ 72.50		
9 blk, Miltonvale 705 @ 102.00			
12 blk, Kanopolis 718 @ 102.00	HOGS		
10 mix, Salina 714 @ 101.75	47 mix, Glasco 259 @ 47.50		
6 blk, Galva 778 @ 101.00	14 mix, Manchester 256 @ 47.50		
5 blk, Salina 663 @ 100.50	2 wht, Alma 250 @ 47.50		
5 blk, Lehigh 704 @ 100.00	11 mix, Alma 249 @ 47.50		
39 mix, Manchester 715 @ 100.00	4 wht, Hutchinson 265 @ 47.10		
12 blk, Lindsborg 855 @ 99.00	31 wht, Tescott 261 @ 47.10		
54 mix, Manchester 751 @ 98.00	9 wht, Moundridge 233 @ 47.10		
	SOWS		
HOLSTEIN	4 mix, Hutchinson 629 @ 55.00		
2 hols, Hillsboro 318 @ 80.00	2 mix, Williamsburg 623 @ 55.00		
9 hols, Brookville 573 @ 77.50	2 mix, Partridge 593 @ 55.00		
10 hols, Hillsboro 363 @ 75.00	1 wht, Ellsworth 580 @ 55.00		
2 hols, Brookville 583 @ 74.00	2 wht, Williamsburg 520 @ 54.00		
10 hols, Brookville 652 @ 73.00	2 wht, Miltonvale 555 @ 54.00		
2 hols, New Cambria 595 @ 73.00	3 mix, Hutchinson 558 @ 53.75		
8 hols, Brookville 726 @ 70.50			
	PIGS		
BABY CALVES	13 mix, Williamsburg 101 @ 34.00		
1 blk, Ellsworth 300 @ 330.00	29 mix, Williamsburg 63 @ 21.00		
1 red, Assaria 180 @ 310.00	28 mix, Williamsburg 50 @ 17.50		
1 red, Ellsworth 265 @ 300.00			
1 blk, Ellsworth 165 @ 255.00			
2 bkmx, Randolph 235 @ 210.00			

Early Consignments for Thursday, September 25

77 steers, 800-900 lbs., all natural; 25 black steers & heifers, 500-650 lbs.; 122 black heifers, 750-800 lbs.; 560 steers, 850-950 lbs.; 100 black steers & heifers, 650-750 lbs.; 180 steers & heifers, 700-800 lbs.; 215 black steers & heifers, 400-600 lbs.; 270 steers, 800-850 lbs.; 71 steers & heifers, 500-650 lbs.; 10 steers & heifers, 650 lbs.; 25 steers, 700-775 lbs.; 190 mostly black steers, 825-875 lbs.; 12 steers & heifers, 500 lbs.

Plus many more by sale time.

For Information or estimates, contact:

Mike Samples, Sale Mgr., Cell Phone 785-826-7884
Kyle Elwood, Asst. Sale Mgr., Home Phone 785-825-1598, Cell Phone 785-493-2901

Jim Crowther 785-254-7385 Roxbury, KS	Don Long 785-531-0606 Ellsworth, KS	Ron Bearnes 785-283-4757 Tescott, KS	Kenny Briscoe 785-524-4048 Lincoln, KS
---	---	--	--

1150 KSAL, Salina 6:45 AM - MON-FRI
880 KRVN 8:40 AM - WED-THURS.
550AM KFRM - 8:00 am, Wed.-Thurs.

Check our listings each week on our website at
www.farmersandrancherslivestock.com

LISTEN TO OUR MARKET BROADCAST

Public invited to K-State to hear experts on climate change

National authorities on global climate change will be at Kansas State University Oct. 21, leading the first open-to-the-public session ever offered as part of a K-State Research and Extension Annual Conference.

"We designed the afternoon session as professional development in a subject that's shaping up to be a real scientific and educational challenge for our statewide network of faculty from now on. Then we realized, however, that by inviting the public, we'd also get a head start on meeting that challenge," said

Daryl Buchholz, K-State's associate director of Extension and Applied Research.

Many Kansans already are concerned about climate change — which actions to take, what policies to adopt and whether "green" income is even possible, he said. Many also want to know what's fact and what's guesswork in today's climate-change discussion.

They can gain insights into all those concerns, Buchholz added, on the third Tuesday in October from 1:30 to 5:30 p.m. in the K-State Union's main auditorium.

"To give you an idea of whom you can hear: Two of the presenters served on the UN Intergovernmental Panel on Climate Change. They were among the world scientists who helped author the IPCC report that shared the Nobel Peace Prize last year with Vice President Al Gore," the associate director said. "In addition, Gov. Kathleen Sebelius recently appointed the two Kansas researchers to her Kansas Energy and Environmental Policy Group."

The K-State session's major topics and presenters will include:

"Climate Change Impacts: Global, National, and Regional" — Johannes Feddema, professor of geography at the University of Kansas.

"Adaptation to Climate Change" — Jerry Hatfield, lead scientist and director of the National Soil Tilth Lab, a division of USDA's Agricultural Research Service in Ames, Iowa.

"Mitigation of Climate Change: Agricultural Se-

questration" — Charles "Chuck" Rice, K-State professor of soil microbiology and specialist in carbon sequestration.

"Climate Change Policy and Economics" — Susan Capalbo, head of the Department of Agricultural and Resource Economics at Oregon State University.

In a shorter segment, Steve Swaffer, director of natural resources for Kansas Farm Bureau, will describe a new program that allows farmers to earn soil carbon credits that can provide access to revenue-making opportunities on the recently opened U.S. carbon market.

Ray Hammarlund, director of the Kansas Corporation Commission's Energy Programs Division, will join the discussion in the session's last segment, to cover Kansas' current climate policy.

More information about the half-day workshop is available by contacting Chuck Rice at 785-521-6094 or cwrice@ksu.edu.



The grand champion market lamb at the Douglas County Fair was owned and exhibited by MacKenzie Flory of Baldwin City. Also pictured is judge Loy James.



Caleb Flory of Baldwin City drove the reserve grand champion market hog at the 2008 Douglas County Fair. Also pictured is judge Nolan Frantz.

K-State's Oct. 21 speakers 'the best' on climate change

Those attending an afternoon devoted to helping Kansans understand climate change Oct. 21 at the K-State Union will know they're hearing from among the best of the best.

"A list of just one accomplishment for each of the program's major topic leaders makes that fact clear," said Daryl Buchholz, associate director of K-State Extension and Applied Research, who then listed the following:

1. His work with the Denver-based National Center for Atmospheric Research has found that land use — including irrigating — can have as profound an impact as greenhouse gases do on both climate and available water resources. (Johannes Feddema)

2. This scientist is an international authority on the impacts farm and ranch systems can have on air, water and soil quality. His research factors in widely varying farm locales and management systems. It's proving such assessment tools as lasers and remote sensors and may be why he's now in charge of reviewing all Agricultural Research Service projects for scientific quality. (Jerry Hatfield)

3. A national leader in the subject of microbial ecology, he is the director of a 10-institution think tank called the Consortium for Agricultural Soils Mitigation of Greenhouse Gases. At the same time, he is a technical advisor for the Midwest Governors Association Accord on Greenhouse Gases and an appointed member of USDA's Agricultural Air Quality Task Force. (Charles "Chuck" Rice)

4. This expert has directed an international collaboration of research scientists, industries and government agencies to assess the economic and the legal issues and risks of large-scale sequestration. In tests, the group demonstrated injecting carbon dioxide and other greenhouse gases in coal basins, underground basalt, and various plant-bearing soils for long-time storage. (Susan Capalbo)

Place Security
Back Into Towing

- Luverne Truck Equipment
- DewEze Hay Handling
- Flat Beds
- Exhaust Work

Myronized Truck Works
35,000-lb. GTW
DROP 'N LOCKS

Centralia, KS
785-857-3581

24 RIDERS SELL

Annual Performance Foundation Quarter Horse Sale
Saturday, Oct. 11, 1 p.m.

46 Years Of Breeding...
"The Cowboy's Kind"

24 Riding Horses 34 Weanlings

ALL RIDERS WILL BE SHOWN UNDER SADDLE SALE DAY

LOT 3 - 9-year-old Palomino gelding with a lifetime working pasture, feedlot and arena. Here's the one.

LOT 16 - 13-year-old gray mare used hard in pasture, arena, trails. Beautiful and go all day.

LOT 24 - 6-year-old bay ranch horse deluxe. Heavy muscled and ready to work very hard.

LOT 49 - 4-year-old Palomino gelding worked in feedlot, backgrounding, pasture, doctoring.

RODAN'S DOUBLE BRANCH
FREE PICTURE CATALOG
Dennis Rezac, Auctioneer, 785-437-2785
Allyn Thompson & Ron Shivers Auction Company - Cooperating & Assisting - 785-263-7488

Alta Vista, KS • 785-499-6894
bb_ranch@hotmail.com

THE LEGEND ROLLS ON

FOR 42 MONTHS ON ALL FARMALL MODELS.

PLUS, GET A \$650 FUEL CARD!

**See your Case IH dealer for complete details.

INTEREST FREE AND FREE FUEL TOO!

Farmall® tractors are back. The tractor that shaped farming history is forming its future. With a full line of 20 versatile new models ranging from 31-105 hp, Farmall tractors are perfectly powered for the jobs you need to get done. Buy now and get a \$650 fuel card to push your productivity even further. With 0% financing for 42 months, it's the perfect time to talk to your Case IH dealer. **CASE IH. FOR THOSE WHO DEMAND MORE.™**

Hurry! Offer ends soon.

KanEquip Inc. .com
Wamego • (888)456-2041

*For commercial use only-not intended for personal, family or household use. Customer participation subject to credit qualification and approval by CNH Capital America LLC. See your Case IH dealer for details and eligibility requirements. Down payment may be required. Offer good through September 30, 2008. Not all customers or applicants may qualify for this rate or term. CNH Capital America LLC standard terms and conditions will apply. Taxes, freight, setup, delivery, additional options or attachments not included in suggested retail price. Offer subject to change or cancellation without notice.

©2008 CNH America LLC. All rights reserved. Case IH and CNH Capital are registered trademarks of CNH America LLC. www.caseih.com

Wind farm in works for western Kansas

COLBY (AP) — Construction on a new 72-tower wind farm in Thomas County could begin before the end of the year.

A second wind farm is being planned for Hamilton County by Acconia Energy North America, a subsidiary of Acconia, based in Madrid, Spain.

Both projects still are on the drawing board, so details likely will change before construction actually begins, according to Eric Schneider, director of marketing and communications for Acconia. Schneider said he is a Topeka native now living in Chicago.

The proposed wind farms represent some of the green economic benefits discussed earlier this month by the Center for American Progress and heralded by the Kansas Sierra Club.

In its report, the center suggests Kansas would gain a small slice of the \$100 billion in benefits that would derive from a green economy. Most of the \$881 million benefit to Kansas, the group said, would go to existing groups for retrofitting buildings, mass transit and alternative sources of energy.

The group is suggesting an increase of slightly more than 20,000 jobs in Kansas would come from green jobs.

Some of those jobs would be created for projects such as the Solomon Creek wind project in the Colby area. That project would include 72 1.5-megawatt towers. The turbines would produce 108 megawatts of power.

The nacelles — the uppermost unit that houses all the generating components — will come from Acconia's own manufacturing plant in West Branch, Iowa. The towers and blades will be purchased on the open market.

The Hamilton County wind farm, called the Bear Creek project, will be slightly larger, Schneider said, with 90 towers capable of producing 135 megawatts. The total number of towers at either location could change by the time construction begins, he said.

Schneider said Acconia is looking at the two projects because of the wind resources available in the western part of the state.

"We do have assessments all over the state and the Midwest," he said.

Specifically, the wind assessments for the area where the land is available is drawing the company to Thomas County.

"We also have to have access to transmission lines," Schneider said.

In the Thomas County case, Acconia would tap into transmission lines owned by Sunflower Electric.

Although specifics of the project likely will change, Schneider said it is a project that is far along in the planning process.

Wind assessments already have been done. "We're getting pretty far down the path," he said. "We haven't broken ground, but we know wind capacity is good."

That leaves working with landowners and owners of transmission lines.

"We're hoping to break ground this year," he said.

The Thomas and Hamilton county projects would be the first in the Kansas for Acconia, but not the first in the United States. It has four wind projects in Canada and two in the United States.

Acconia is an international company, with much of its work focusing on renewable energy projects, such as wind, solar and hydrogen projects. The company has desalinization projects in Florida and California.

Perhaps its most visible project is the Nevada Solar One, a bank of curved mirrors that produces steam to turn a turbine producing 64 megawatts of electricity.



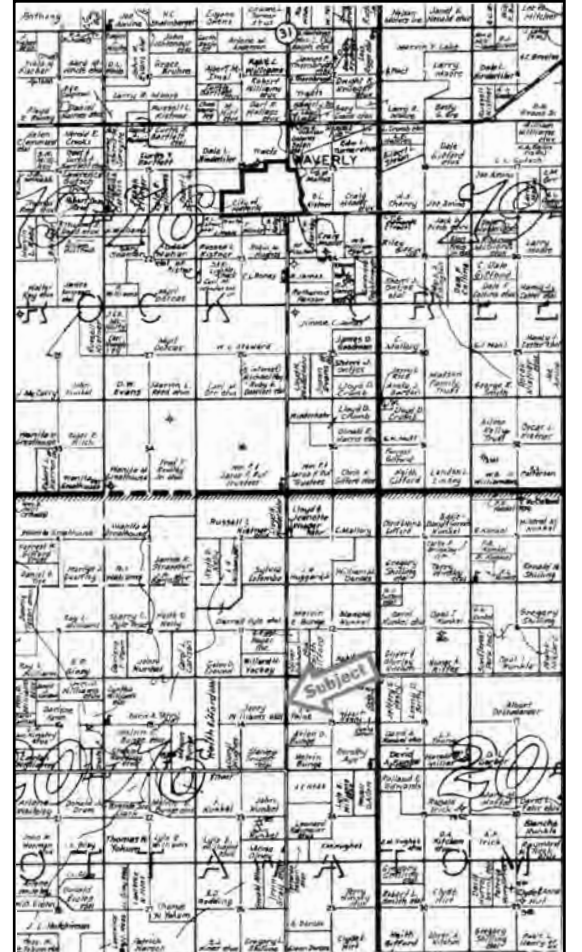
Reserve champion Gelbvieh bull at the Kansas State Fair was shown by Lacey McCabe, Burdett. Pictured are judge Joel Judge, Chandler Ladner and Pat McCabe.

785-539-7558 Call us for Catalogs, Sale Flyers, Magazines, Calendars, Brochures, Books, Newspapers and ask for Marlin.

AG PRESS

240 ACRES COFFEY COUNTY Real Estate Auction **LAND w/BEAUTIFUL WATERSHED LAKE, GRASS, TIMBER & IMPROVEMENTS**

TUESDAY, OCTOBER 28 — 7:30 PM
Held at the Community Building in WAVERLY, KANSAS



LEGAL DESCRIPTION: The Northwest Quarter and the East Half of the Northwest Quarter of Section 14, Township 20 South, Range 16 East of the 6th P.M.; Coffey County, Kansas—240 acres more or less.

LOCATION OF THE PROPERTY: From Waverly, Kansas — go 5 miles south on Trefoil Road to 20th Road. The property is located on the West Side of Trefoil Road and the South Side of 20th Road. Watch for signs.

TYPE OF PROPERTY: This parcel has a 23 acre Watershed Lake with a combination of native grass and cool season grasses. There is an older farm house with rural water and electricity plus propane heat. The home has 3 BR, 1 bath and 1408' SFLA plus a few outbuildings in the home-stand. This property offers some of the finest water fowl hunting in Eastern Kansas. As the duck flies it is 4-5 miles north on the Wolf Creek Lake. The property has springs plus a small pond or two along with the timber. There is alot

of deer traffic across this parcel. Must see to believe.

TERMS: Seller requires 20% earnest money payable on the day of the sale with the balance due in full at the time of closing-approximately 30 days.

CONDITIONS: This sale is subject to all easements, restrictions, covenants, leases and zoning regulations of record.

MERCHANTABLE TITLE: The Seller agrees to furnish a Title Insurance Policy for the amount of the purchase price with the cost split equally between the Buyer and the Seller.

POSSESSION: The Buyer will receive full possession of the property at the time of closing.

MINERALS: All the Seller's mineral interests transfer with the Real Estate at the time of closing.

TAXES: The Seller will pay the 2008 taxes. There will be no pro-ration of taxes.

ANNOUNCEMENTS: To obtain more information or make arrangements to view the property please call the selling agent at the listed phone numbers. All announcements the day of the sale take precedence over all previous printed material or advertising. Joe Biggs and Associates, Inc. is the agent for the Seller in this transaction and does not represent the Buyer. All information is obtained from sources deemed to be reliable but are not guaranteed by the Seller or the Selling Agent. This sale is not subject to the Buyer obtaining financing. All financial arrangements should be made prior to the sale. The Sellers and the Selling Agent are not responsible in case of accidents.

AUCTIONEER'S REMARKS: It is only after much thought and deliberation that the Heirs of Raymond and Ina Merle Williams have decided to sell this unique property. This tract has highway location yet the lake has seclusion and is not visible from the road. This property could be a weekend retreat or a great place to hunt and fish. This is a private watershed lake and the owner controls who hunts and fishes and enters the property. Please make arrangements to view this outstanding property. It is one of a kind. **COME TO THE SALE—WE APPRECIATE YOU BEING THERE.**

SELLER:
Heirs of Raymond & Ina Merle Williams

SELLING AGENT:
Joe Biggs & Associates, Inc.
 1875 19th Road NE
 Waverly, Kansas 66871
 (785) 733-2893 Business, (620) 343-0670 Cell,
www.joebiggsandassociates.com

Since 1954 **GRASS & GRAIN** Check us out for hundreds of upcoming auctions from across the country! grassandgrain.com

EMPORIA LIVESTOCK SALE CO.
 Bonded & Insured
SALE EVERY FRIDAY IN EMPORIA, KANSAS AT 11:00 AM
 620-342-2425 or 800-835-7803 toll-free • Fax: 620-342-7741

9-19-08. Total Receipts 1,1014. A nice big run for last Friday with some calves mostly unweaned which showed interest but were definitely cheaper than weaned calves. Feeders steady to lower due to a lower trend in the commodities.

3 hfrs @300# \$125.00	9 strs @467# \$113.00
3 hfrs @315# \$121.00	4 strs @495# \$110.00
2 hfrs @360# \$117.25	4 strs @520# \$118.00
3 hfrs @345# \$113.00	2 strs @505# \$116.25
4 hfrs @485# \$110.00	3 strs @540# \$113.00
4 hfrs @479# \$108.50	3 strs @588# \$109.50
4 hfrs @460# \$104.50	2 strs @558# \$108.50
3 hfrs @550# \$111.00	3 strs @540# \$108.00
6 hfrs @521# \$109.00	6 strs @610# \$113.00
4 hfrs @509# \$106.50	14 strs @655# \$110.00
5 hfrs @565# \$106.50	4 strs @655# \$109.50
7 hfrs @573# \$104.00	4 strs @649# \$108.50
6 hfrs @625# \$107.00	10 strs @632# \$108.60
6 hfrs @678# \$105.75	6 strs @645# \$107.50
9 hfrs @624# \$104.50	3 strs @608# \$104.50
8 hfrs @648# \$104.25	6 strs @710# \$109.10
3 hfrs @612# \$103.00	25 strs @716# \$107.75
8 hfrs @689# \$100.00	8 strs @718# \$107.10
11 hfrs @710# \$104.00	18 strs @796# \$106.00
4 hfrs @725# \$103.00	10 strs @773# \$105.70
14 hfrs @753# \$102.75	10 strs @735# \$104.00
23 hfrs @717# \$101.75	8 strs @810# \$107.50
17 hfrs @751# \$101.10	11 strs @808# \$106.35
10 hfrs @775# \$100.10	17 strs @803# \$105.75
14 hfrs @805# \$101.50	84 strs @888# \$105.00
7 hfrs @816# \$100.75	40 strs @843# \$104.85
23 hfrs @804# \$100.35	17 strs @872# \$103.00
57 hfrs @836# \$99.00	8 strs @885# \$102.00
14 hfrs @865# \$98.00	4 strs @901# \$104.00
6 strs @885# \$95.00	51 strs @930# \$103.00
4 strs @355# \$130.00	48 strs @957# \$102.85
2 strs @370# \$128.00	13 strs @977# \$102.75
3 strs @390# \$127.00	8 strs @950# \$100.60
4 strs @433# \$119.10	6 strs @1072# \$98.00

HEIFERS
 300-499 LBS. \$103.00-\$125.00
 500-599 LBS. \$104.00-\$111.00
 600-699 LBS. \$100.00-\$107.00
 700-799 LBS. \$100.00-\$104.00
 800-899 LBS. \$98.00-\$101.50
 COWS: \$53.00-\$60.00
 \$42.00-\$52.00
 SHELLS: \$41 & Down

STEERS
 300-499 LBS. \$110.00-\$130.00
 500-599 LBS. \$108.00-\$118.00
 600-699 LBS. \$104.75-\$113.00
 700-799 LBS. \$103.00-\$109.00
 800-899 LBS. \$102.00-\$107.50
 900 LBS. & UP ... \$100.00-\$104.00
 BULLS: \$63.75-\$68.00

EARLY CONSIGNMENTS FOR FRIDAY, SEPT. 26
 20 mixed steers & heifers, 400-600 lbs.
 33 black steers, 500-600 lbs.
 50 black steers & heifers, 550-700 lbs.
 83 mostly black steers, 775-850 lbs.
 300 black & Char steers, 900-1,000 lbs., pending
MORE CONSIGNMENTS BY SALE TIME!

For Cattle Appraisals Call:
 BRODY PEAK, 620-343-5107 GLENN UNRUH, 620-279-4524
 WIBW 580 - 6:45 A.M. Thurs; KVOE 1400 - 6:30-6:45 A.M. Thurs. & Fri.

