

# GRASS & GRAIN

Published by AG PRESS

54th Year

No. 25

August 19, 2008

\$1.00



## Experts encourage increased forage use to boost cattle profits

by Frank J. Buchman

Greater forage utilization is one way to help combat constantly increasing expenditures for cattlemen.

More than 100 people from over a 130-mile radius of Cloud County heard that message seated on hay bales in the cool, tree-shaded retreat area on the Gordon and May Morrison ranch south of Concordia.

Coordinated by Todd Whitney, agronomy specialist for the River Valley Extension District, with cooperation from several other ag agencies, the Grazingland Workshop stressed cost-cutting suggestions for cattlemen.

"Higher fuel and fertilizer costs, along with other continually increased expenses on the ranch, demand that cattlemen look at every alternative to hold their outputs down," emphasized Bill Phillips, research animal scientist at the Grazinglands Research Laboratory near El Reno, Okla.

One-third of the nation's cow herd and 85 percent of

cow-calf operation is one method to expand profit potential in the cattle business here.

"However, transportation costs to import needed supplies are sometimes a deterring factor," Phillips clarified. "Therefore, it's often more feasible to ship cattle in at lighter weights, because more can be loaded on the trucks."

Hay, as a key ingredient in starter diets for stockers, is also an ever-increasing production component. "Expansion of both large dairies and bio-fuel production in the area creates competition for hay," Phillips warned.

Thus, increased use of all forages was recommended. "It costs a lot to make grass into hay," Phillips calculated. "There is added management required to graze the forage, but it generally requires lower inputs overall, especially considering high fuel and labor costs."

Longer growing periods and fewer days in feedlots can sharply reduce energy use by cattle. "Rates of gain

ther reduces the cow's feed consumption."

Native grasslands can be used with a variety of other forages in year-round grazing rotation programs, explained Brian Northup, research ecologist from the El Reno lab. Considerable data was presented utilizing various crops, but research with wheat grazing has often shown to be cost-effective.

"Of course, when wheat is \$10, farmers sometimes don't feel like they can jeopardize their yield potential by grazing," Northup admitted.

However, his studies indicate that wheat grain yields are not affected when cattle are removed by March 1. "My philosophy has still always been, if it doesn't make money why do it?" added Northup.

Yet, in most cases stockers grazing on wheat pasture can gain two to three pounds daily. "Nitrogen fertilizer has doubled in cost, and is essential for a grain crop, so why not get more use out of your program by grazing the wheat, too, even if it takes some additional management?" Northup questioned.

Additional perennial and annual forages can supplement native and wheat grazing. Wheatgrass, fescue, lespeche, brome, sudan, triticale and rye were mentioned as suitable complementary pastures.

"Depending on the location, and of course weather conditions, these grasses can work well in rotation programs," Northup advised.

He cautioned that planting and fertilizer costs must be figured carefully before incorporating forages into a cattle operation. "Some of the perennials require a year of deferment, or they will be killed out," Northup confirmed. "However, our work indicates they will still be profitable in a seven-year production life."

"Perennial grasses are cheaper to grow than wheat," he credited.

Although considerable work has been done with fescue, Northup advised that extra management is essential. "There can be problems if fescue is not intensely grazed before it becomes too rank and hazardous to cattle," he stated. "I always used cattle-friendly, endophyte-free fescue."

Early intensive grazing of native pastures has been proven cost-effective in all work done by Northup. Twice the number of cattle are placed on an acreage when the protein level is the highest, and then taken off at one-half the traditional grazing period.



The sun was shining, the sky was blue, matching the color of the pond water, and the native prairie was tall, lush and green for a recent Grazingland Workshop south of Concordia. Rancher Gordon Morrison, right, is with the featured panelists: Dwayne Rice, state rangeland management specialist; Brian Northup, Grazinglands Research Laboratory ecologist; and Bill Phillips, laboratory animal scientist.

"The gains are very high, and it gives the grass time to recover," he contended. "In programs such as this, other complementary, rotational grazing programs work quite efficiently."

Certain broadleaf weeds are palatable and nutritious for cattle, according to Northup when questioned about destroying intruders on seeded forages. "I'd rather graze cattle than use a herbicide or mower," he qualified.

Host Gordon Morrison described how the nearby pond was filled by drainage from four sections of grassland, and cattle grazing those acreages could water from it if necessary.

"Soil and water conservation specialists were concerned that there would be too much flow into the pond. However, runoff goes into three other ponds before it reaches here, so that's not a problem," commented Morrison.

With three surface acres of water, the pond has an island in the center. "I wanted the entire pond to be at least 12 feet deep, so I had the soil piled in the center, and people can fish or hunt ducks and geese from there," Morrison informed.

Completed four years ago, the pond was stocked with fish when water supply was adequate. "It already has some very nice bass, as well as bluegill for their feed supply, along with catfish. We catch and release the bass, so they'll continue to grow," Morrison said.

The retreat area was described by Morrison as a "dream campsite." Downed timber was removed, picnic

tables constructed and a native stone open-flame cooking spot built. Locations nearby have been cleared where campers can pitch tents. A mobile home and a portable outhouse were on location.

"This is the first meeting we've had here, but we hope this will attract Boy and Girl Scouts, other youth and family groups as well as businesses looking for a place to gather in the country," Morrison welcomed.

May Morrison and a group of neighbors prepared and served the picnic dinner, sponsored by Crossroads Resource, Conservation and Development and the Cloud County Conservation District.

Those in attendance moved out into the waist-high native pasture overlooking the pond as Dwayne Rice, state rangeland management specialist for the Kansas Natural Resources Conservation Service from Lincoln, identified native grass varieties.

Of the 18 grass varieties in the area, Rice indicated that Indiangrass, Big Bluestem, Switchgrass, Eastern Gamagrass and Little Bluestem are the most prominent and important. "Three pages" of forbs have been identified.

"These are not all bad," Rice revealed. "Actually, cattle like and do well on many broadleaf species. About 30 percent of their diet is forbs." Complete eradication, through herbicides or other means, was discouraged, because it upsets the natural prairie ecosystem.

Burning native grass on a regular schedule was recom-

mended by Rice to control brush and weed intruders as well as increase protein levels during early growth. "Resting a pasture every three to five years will build up its quality, too," he alerted.

Importance of reliable clean water was stressed by Rice. "Most people don't realize that a cow needs 12 gallons of water a day; and if the grass is dry, they can consume 18 gallons a day," he quoted.

"Springs and tanks supplied by wells are often good supplemental water sources. "Unclean and muddy ponds don't provide clean drinking water that cattle prefer," Rice qualified. "Rural water is by far the most expensive water source."

When watering from tanks, cattle need at least 12

*Continued on page 3*



Major native grass varieties along with several desirable forbs were identified by Dwayne Rice, state rangeland management specialist for the Kansas Natural Resources Conservation Service from Lincoln, during a Grazingland Workshop on the Gordon and May Morrison ranch south of Concordia. "About 30 percent of a cow's diet is forbs," Rice said.

both the cattle finishing operations and packing businesses are located in the southern Great Plains. "These logistics create considerable opportunities for cattlemen in the region," according to Phillips, whose lab is part of the United States Department of Agriculture's Agriculture Research Service.

Six parts of the beef chain are cow-calf, stocker, feedlot, slaughter, wholesale and retail. "I work with cow herds, but most of my research is involved in stockers," Phillips related. "Diversifying stockers into a

for cattle grazing high protein forages are high, and cost less than high-concentrate feeds," Phillips recognized.

Later calving and earlier weaning of calves has been a controversial issue, but Phillips indicated that profitability has been shown from these practices.

"Cows require less feed when calving in March and April, rather than having calves earlier," he analyzed. "Although calves weaned at four months of age in late summer instead of the fall will weigh less, they can do well on their own. This fur-





## Over the Barn Gate

By Beth Gaines-Riffel

I've reached one of those milestones in life that some celebrate while others might be moved to tears. My youngest has now entered the school system and as of last Friday is officially a kindergartner. And in case you were wondering, I fall into the former camp rather than the latter. Sure, I'm sad that I don't have a regular interaction with my children's "other mother" the childcare provider who for the past 12 years has spent nearly as much quality time with my three children as I have. And I know that our family was truly blessed to have such wonderful childcare arrangements that allowed me the opportunity to pursue my career during the inter-

vening years. Nonetheless, I'm excited to be moving into the next phase.

And on the opposite end of the spectrum, my oldest is going into junior high. Now that notion scares me just a wee bit. It's more than the idea that we'll be adding a schedule that is a bit more intense — and includes football — but the fact that he has fewer years of his primary education left than he has already completed. Can anyone tell me where the time goes?

Just as there is anticipation while waiting for the crop of new calves to arrive — or for the harvest of a new variety of corn — I'm a bit anxious about the coming school year. The challenge of a new experience is thrilling at least it is in my mind. Then again it very well may be a mother thing that will too pass.

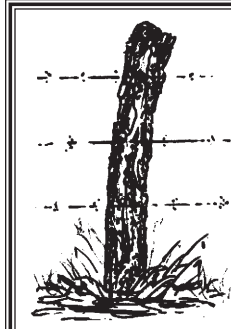
I've never been the kind that wanted to keep the kids under my wing "protecting" them if you will. I'm more of the type that pushes

her young to the edge of the nest and then proceeds to give them a loving shove over the edge, knowing full well that they've been given a good set of wings and they'll be able to fly given the opportunity.

I didn't get to watch much of the Olympics in the past couple of weeks, although I've stayed abreast of the events via friend's accounts, newspaper reports and a couple of Internet sites. Following the achievements of the medal winners — Michael Phelps included — I'm rather certain that these individuals didn't get where they are and achieve greatness by not having a parent, mentor or coach urge them to dig a little deeper and give a little more. Great achievements don't come without patience, persistence and a unwavering belief that a goal can be achieved.

There is a lesson there for all of us, regardless of our age or experiences in life.

That's all for now. I'll chat with you next week, "Over the Barn Gate!"



## The Learning Post

By Gordon Morrison  
Concordia Rancher and  
Former Agriculture Educator

### What You Don't See

One of the first persons to arrive at the Grazingland Workshop, held here last week, was Frank Buchman, who came with his notebook and camera. I am sure he will be writing an article about it for this week's issue of the paper.

There were some happenings behind the scenes prior to the event, however, that he will not be able to tell you about — mainly the big discussion May and I had concerning how our restroom facilities at the camp site, one mile from the house and plumbing, was going to accommodate the nearly one hundred people who would attend. It really was not of great concern to me; I thought a tarp nailed up among the trees would suffice, but May would not let it rest there. She assured me that women would be present, and my solution was no solution at all. The small bathroom in the camper that is set up at the site would not be sufficient to handle the anticipated number of attendees but might be adequate for the women.

Two days before the event, we discovered the water pump in the camper was not working. May finally got through to me that my idea of a restroom was not going to cut it. I questioned, "What do you suggest we do since the 12-volt water pump is broken?" We talked about renting a porta-potty, hauling it in and returning it a few hours later, and I asked, "Is that what you want?" I still thought my original idea of a tarp among the trees was sound; however, I knew I was going to lose this argument.

Later that day I was talking with Steve, our county conservation district technician, and he came up with a solution that made it possible for May and me to save face. He made a contact with an acquaintance who is a person of authority in the construction company that is building the wind farm nearby. He arranged for us to borrow one of their portable facilities, located four miles away. All we had to do was pick it up and return it at the end of the day. The little chore was made easy with the good help of our part-time hired man, Daniel, and his friend, Matthew, both in their late teens and both strong and agile. The camper restroom was sufficient to meet the needs of the few ladies present. A plastic pitcher, along with two big buckets of water sitting in the bathtub substituted for the non-functioning pump. A pitcher of water poured into the stool before turning the flush button solved the problem.

Another chore completed that Frank could not have seen was when Daniel and Matthew got up at 5:30 to load 80 dry bales from the hay barn after .10 inch of rain and set them in rows under the shade trees at the campsite. Lawn chairs completed the seating arrangements.

At 9:30, when people from a radius of over 130 miles began to arrive, the boys again went into action, and ran two shuttles — pickups pulling trailers with bales to sit on — to the campsite about a mile away. It took four shuttles through the pastures to the doughnuts and drinks.

When it was close to noon, Daniel and Matthew were at the house to load the food and deliver it to the serving area at the site, where the ladies were soon ready for the serving line.

At the end of the afternoon session, our two young men were ready to run the shuttles back to the parked vehicles. Later, they loaded the bales of hay and returned them to the barn.

Their next big job was to load the porta-potty and return it to the construction site. When our three horses saw the little blue building being transported through the pastures in the back of the pickup, it must have seemed strange to them, for they performed with a lot of horsing around — whinnying, running, squealing, and Bonnie even bucked a few times to show her astonishment at the thing that calmed a big discussion and brought civilization to the campsite.

One of our next projects at the campsite is to build a framed structure over an "Eleanor potty," built in the 1930s by the W.P.A. and named after Mrs. Roosevelt, who promoted their construction and use in rural areas for better sanitation. (For more on this type of "outhouse," see the August 2008 issue of the Kansas Country Living magazine, published by the KEC, "Historic Privies," pp. 17, 21.) All that remains of the original structure is the four-foot square concrete slab and seat; the wood has all rotted away. Daniel and I have looked it over and think we can complete the job. It will take some work, but it will be worth it and may possibly save some arguments in the future. I hate arguing with May, for I always lose.

The book *Views from the Learning Post* can be ordered from Gordon Morrison, 1268 Key Road, Concordia, KS 66901 or may be available in a store near you. For information, call 785-243-3833.

Some day, in years to come, you will be wrestling with the great temptation, or trembling under the great sorrow of your life. But the real struggle is here, now, in these quiet weeks. Now it is being decided whether, in the day of your supreme sorrow or temptation, you shall miserably fail or gloriously conquer. Character cannot be made except by a steady, long continued process.

— Phillips Brooks (1835-1893) American Bishop



"I am only one, but still I am one; I cannot do everything; but still I can do something; and because I cannot do everything, I will not refuse to do the something that I can do."

— Edward Everett Hale

## COW POKES®

By Ace Reid

<http://www.cowpokes.com>



"Jake, it's only a bad case of sunburn, but it's going to get worse if you don't quit looking for rain clouds."

## GRASS & GRAIN®

Published by AG PRESS

785-539-7558

Fax 785-539-2679

Editor — Beth J. Gaines-Riffel  
gandgeditor@agpress.com

— Advertising Staff —  
Steve Reichert Peggy Giles  
Frank J. Buchman  
agpress2@agpress.com

### GRASS & GRAIN (USPS 937-880)

The newsweekly for Kansas and southern Nebraska, published each Tuesday at 1531 Yuma (Box 1009), Manhattan, KS by Ag Press, Inc. Periodicals postage paid at Manhattan, Kansas. Postmaster send address changes to: Ag Press, Box 1009, Manhattan, KS 66505.

Subscription — \$75 for 2 years. \$41 for 1 year, includes sales tax. Outside Kansas, \$48 for 1 year, \$89 for 2 years.

MEMBER OF  
Associated Press

[www.grassandgrain.com](http://www.grassandgrain.com)



## Workshop focuses on use of forage

Continued from page 1

feet on each side to drink their requirements.

A half-section native pasture on neighbor Jim Lervold's ranch was viewed by some of the group. It has been subdivided with electric fencing into eight paddocks for rotation grazing of stockers.

"It's not any problem training the cattle to move

from pasture to pasture, but gates must be wide enough. Ten feet is definitely too narrow, and 30 feet is best," Rice remarked.

As the activities concluded, several stayed to fish in the pond, and others drove to the nearby wind farm. "I have been watching the construction from my house," Morrison relayed. "We are too close to the radio towers for it to be

built here, but three miles over 24 towers are being built."

Recognizing that some landowners and certain areas are against installation of wind turbines, Morrison professed, "Cloud County has been very receptive. The project has been helping the locale financially, and we expect it to continue in future years."



A "dream campsite" built below a large pond, constructed where four sections of native pasture drain, provided the perfect setting for a Grazingland Workshop hosted by Gordon and May Morrison on their ranch south of Concordia. Over 100 people from a 130-plus-mile radius participated in the relaxing day-long educational sessions.

## Storm-damaged trees an on-going concern

Starting with last winter's limb-bending ice storm, the weather has been wreaking havoc on central U.S. landscapes.

"I keep hearing a lot about the length of time people are having to wait to get onto a certified arborist's schedule. People also are concerned about whether a tree that is leaning now will straighten out in time on its own," said Charles Barden, forester with Kansas State University Research and Extension.

Unless a damaged tree is a hazard for people or property, its post-storm cleanup and repair isn't likely to be an emergency, Barden said. Mature trees, in particular, tend to be amazingly patient.

But, leaning or blown-over trees can be an exception.

"A tree that's slightly bent over may appear to straighten up as growth occurs on its upright branch-

es. Still, the trunk's lean will remain," Barden said. "Smaller trees — especially river birch — need to be

pulled upright and staked for a year or two. Otherwise, they'll be more prone to future storm damage."

**STAR**  
**A-100**  
**ALFALFA**

*High Yielding!*  
*Fine Stemmed!*  
*Excellent Disease Resistance!*  
*Excellent Pest Resistance!*  
**YOU WILL LIKE OUR PRICE!**

Available from your local Star Dealer or telephone  
**800-782-7311**  
Osborne, KS  
*The Forage People*

## ESTATE AUCTION

SATURDAY, AUGUST 23 — 9:00 AM

AUCTION LOCATION: At the National Guard Armory Building at 12th & Bridge Streets in CLAY CENTER, KANSAS

**LEATHER SHOP EQ.:** Consew Model 756R electric leather sewing machine; Teacsew electric sewing machine; Adler electric leather sewing machine; 2 Singer leather sewing machines, old; commercial buffer; leather riveter, manual; bench with vise on both ends; wood work bench and various other work benches; 2 trailers loaded with assorted leather, some harnesses, lots of hardware for harness and bridles and saddles; and inventory of hames, brass tips, bits, stirrups and etc.

**SHOP TOOLS:** Craftsman wood lathe and lathe tools; Twentieth Century arc welder, 180 amp; Craftsman commercial hand grinder/polisher; B&D drill bit sharpener; Sioux 1/2 inch drill; Shop Craft sander; Schauer 6 or 12V battery charger; Stanley miter box; Bain Bridge band saw, no blade; pipe vise; post vise; drill bits and hole saws; 2 shop chest drawers; 1 - 3 drawer chest; Delta home craft band saw; Wagner airless sprayer; Craftsman table saw.

**ANTIQUES/COLLECTIBLES:** Old fishing reels; old fishing tackle; old baseball mitts and catchers mask; DuPont dynamite wooden box; Blackhawk corn sheller; Enterprise cherry stoner; 5 nail kegs; Standard single row planter; antique wood vise; wood slot bench; '46 and '48 Plymouth hood ornaments; metal match box "Always use Zepher Flour" large jack, railroad or house moving; 2 wooden bar clamps; Massey Ferguson MF-50 owners manual; 2 Baldwin Filters clocks, not working; Enterprise lard press; cast iron skillets, one Griswold; L.O. Norquist-McCormick Dearing nail bar; Jevon's Supply Co. nail bar; small oak barrel; shoe casts for repairing shoes; 2 electric heaters, old radiant dish type; triple beam balance scale by O. Haus; Aladdin oil lamp, white glass font and rose color base; Chalkware boy string holder; antique oil lamps with Vintage glass chimney; wood Yocum Bros. cigar box; cast iron bull; Western Electric portable sewing machine with wood

dome cover; toy Gilbert chemistry set; Vintage toy noise makers; Marx toy tin Southern Pacific engine and caboose; Western design tin steak plates; box of 78 records; Griswold cast iron waffle maker; 2 aluminum water pitchers; copper fire extinguisher; Coca Cola wall mount bottle opener; red tomato cookie jar; Fire King measure cup; pink glass cake plate; Frankoma red creamer; pair of horse head bookends; hand painted crock water jug by Marshall Pottery; 5 flat boxes of advertising pens and pencils; 2 stripper pens; 2 W.W. Smith & Sons ball point, 1 4 leg deer; 7 Bullet pencils, 1 Clay Center Sales Co. and 1 Mid Kansas Milling Co., Clay Center, KS; antique wood toy blocks; brass ornate horse figurine; Eames Era Retro TV lamps and table lamps; double Panther lamp; comedy and tragedy lamp; 2 saddle on fence lamps; Hull Just Right floral grease jar with matching salt and pepper; 2 hanging Capiz shell lamps; small pewter creamer and sugar; Brownie Junior box camera; Star Flex camera; ornate brass desk bell; wood carved native figurines; Kansas State ceramic bank; ceramic bull figurine; miniature oil lamp; Hull planter; Vintage turn-around toaster; antique funeral photos; Evening in Paris cobalt blue mini vial; green glass snack set; Greyhound child's wagon; child's red wagon; pedal sharpening stone; post drill; 1881 violin shape Singer sewing machine; National Pickle & Canning Co. crock jar, 5 gal.; cistern pump and cups; table metal ornate plant holder; several egg baskets; Model T light; No. 5 crock, chipped; gitts mill; hay lift; gas cast iron cook stove, Wm. Crane Co., N.Y.

**HORSE RELATED ITEMS:** Several good horse collars; high back saddle; numerous pieces of saddles; lead ropes; bridles; and other various horse tack; several brass tip hames; metal double tree; single tree; tongue for wagon; kids saddle and stand; stirrups; saddle horns; 1 small spur and 1 large spur; silver saddle decorations; dremels; Heller hoof knife, bone

**AUCTIONEER'S NOTE:** There will be six trailer loads with various household items and items found around the home. This sale bill can not possibly list everything that is going to be on the auction. Hope to see you at the auction.

**TERMS & CONDITIONS:** Cash or personal check with proper ID or Visa, Master Charge, Discover and American Express credit cards. All items must be paid for before removal. Statements made day of auction take precedence over printed material. Not responsible for accidents or lost items. Mugler Auction Service LLC are agents only. Lunch served.

**PAUL & HELEN WILLIAMS ESTATE**

CASHIER: Shirley Riek

**MUGLER AUCTION SERVICE L.L.C.**

109 S. 4th Street - Clay Center, Kansas

Harold Mugler  
785-632-3994

Randy Reynolds  
785-263-3394

Paul Geist  
785-263-2545

or mobile 785-632-4994

## AUCTION

SATURDAY, AUGUST 23 — 10:00 AM  
BROWN AUCTION PAVILION, 2323 NORTH JACKSON  
JUNCTION CITY, KANSAS

### FURNITURE/APPLIANCES

Maple Kitchen Table w/6 Chairs, Coffee Table, Couch Table, 2-Queen Beds, Bed Room Set (Full Bed w/Vanity & Chair, Full Bed, Several Night Stands, Headboard, Vanity Dresser & 4 Drawer Chest, Dresser & Matching Chest, White Dresser & Matching Chest, 5 Drawer Chest, 3 Drawer Pine Chest, Vanity Stool, Corner Shelf, Lazy-Boy Recliner, Rocking Chair w/Ottoman, Occ Chair, **Small Antique Chair**, Several Telephone & Plant Stands, 3 Bag Chairs, Large White Wood Utility Cabinet, Several Utility Cabinets, 2-2 Drawer File Cabinets, **Sanyo 42" LCD Flat Screen TV (1 Yr. Old)**, 5" TV, 12" Orion Color TV, 27" Orion Color TV, JC Penney VCR, Colby DVD, VHF-DVD Sylvania Player, Kenmore Gas Range (6 Mos. Old), Kenmore Washer, Whirlpool Dryer (Both White), Small Whirlpool Refrigerator, GE Small Freezer, Hot Point Microwave, Whirlpool Dehumidifier.

### RIDING LAWN MOWERS, SMALL TRAILER, & TOOLS

Craftsman II Ride-N-Mulch 10HP 30" Riding Mower w/Bagger, LT 2000 42" Cut Riding Mower w/18.5 OHV Briggs & Stratton Motor, Craftsman 42" Snow Blade w/Chains & Wheel Weights For LT 2000, MTD 4.5HP Snot Blower, Featherlite Weed

Eater, 2 Wheel Trailer (4 X 6), Honda 5.5HP 2500 PSI Pressure Washer, Craftsman 5HP 33 Gal Compressor, Delta Shop Master 1/2" Chuck Drill Press, Central Machine Drill Press 3/8" Chuck, Tradesman's 10" Miter Saw, Saw Table, Craftsman 3 HP 10" Table Saw, Delta Shop Master Band Saw, Craftsman Jig Saw, Wen Sawzall, Craftsman 16" Scroll Saw, Skill 7 1/2" Circular Saw, Delta Round & Flat Sander, Carpenter Work Mate, Roto Zip, Drill Tool (Regular for Air Compressor), Elect Sander, Ryobi Corner Sander, MPC International Sander, B & D 1 1/4 HP Router, Router Table, 4" Hand Grinder, Craftsman Detail Sander, Palm & Belt Sanders, Craftsman Sander Polisher, Sanding Pads, HPG Portable Planer, 2 1/4" Drills, Dayton 7" Hand Grinder, 2-3" Hi Speed Pneumatic Cutters, Air Chisel, Drill, Air Nibbler, Central Pneumatic 3/8" Drive Ratchet, Steel Drill Bits & Numerous Drill Bit Sets, Micrometer Calipers, Milling Tools & Bits (3/8" to 4"), Taps & Dies, Hand Tools (Wrenches, Sockets, Pliers, Chisels, Punches, Hammers & Etc.), Bar Clamps, Concrete Finishing Tools, Several 6 & 12V Battery Chargers (Marquette, Schafer), Come-A-Longs, Steering Wheel Puller, Arrow Pop Rivet Gun, Nut Drivers, 4" Vise, Tool Sets (Sidewinder) 1/4 to 3/8", AC Gauges, Freon

Leak Tester, Portable Gas Pump, Garden Tools, Alumn Step Ladder & Extension Ladder, Floor Jacks, Trouble Lights, Car Manuals.

### MISCELLANEOUS

Carefree Rollout Colorado Awning, Belt Buckles, Wheel Chair, Rods & Reels, Rod Holders, Life Jackets, Tackle Boxes, Tow Ropes, Boat Fuel Cans, Coleman Lanterns, 110 & 12V Propane Cooler, Gran- iteware Coffee Pot, Camper Items, Camper Wheel Covers, Receiver Hitches, Metal PU Tool Box, GE 2 Way Radio, Computer Scanner, Cas- settes, Shop Towels, Bath Towels, Bedding, Throw Rugs, 2-Ironing Boards, Books, 2-Dollies, Car Ramps, Propane Torpedo Heater, Rigid 5HP Wet & Dry Shop Vacuum, Kitchen Utensils, Roaster Oven, Elect Skillet, Flatware, Beverage Glasses, Cups, Pitcher & Bowl, Knick Knacks, Pictures, Clocks, Wooden Cutting Block w/Knives, Wooden Clothes Racks, Door Gates, Patio Table w/Umbrella & 6 Chairs, Small Patio Table w/2 Chairs, Patio Swing, Lawn Chairs, Kenmore 2 Burner BBQ Grill, Yard Art (2-Windmills, Bird Bath, Swans, Angels & Deer), Milk Cans, Cistern Pump, Garden Cultivator, 10-Iron Wheels, Fuel Cans, **AND MANY MORE ITEMS TOO NUMEROUS TO LIST.**

**TERMS:** Cash, Check or Credit Card. Not responsible for accidents. Lunch by Kalmar.

**JESS APPODACA, ESTATE**

**U.S. LAND AND HOME**



JAY E. BROWN  
785-223-7555

GREG HALLGREN  
785-499-5376

785-762-2266 • FAX: 785-762-8910 • E-mail: jbrown@nqks.com  
www.brownrealestateauction.com www.KSALink.com www.kansasauctions.net



# GRASS & GRAIN Our Daily Bread

\*\*\*\*\* By G&G Area Cooks \*\*\*\*\*

## Fred Engler, El Dorado, Wins G&G Recipe Contest & Prize For The Week

Winner Fred Engler, El Dorado: "This is a very nice summer treat and is not at all difficult to make. I recommend an Eastern type cantaloupe (the kind with ridges), as I think they have the best flavor."

### CANTALOUPE PIE

- 3 cups pureed cantaloupe
- 2 cups sugar
- 5 tablespoons cornstarch
- 3 beaten eggs
- 1 tablespoon margarine
- 2 teaspoons vanilla
- 7-ounce can real whipped cream
- (2) 9-inch baked pie shells

Cut cantaloupe in half and remove seeds. Cut each half into eighths and peel. Run through food mill or food processor enough pieces to make 3 cups of pureed cantaloupe. In a large saucepan combine cantaloupe, sugar and cornstarch. Cook, stirring constantly over medium heat until thick. Reduce heat and cook 2 more minutes. Stir one cup mixture into eggs. Add back to pan and bring to gentle boil and cook for 2 minutes. Gently stir in margarine and vanilla. Cool for 30 minutes. Pour into pie shells. Chill until ready to serve. Before serving, spread top with real whipped cream.

\*\*\*\*\*

### Thelma Baldock, Delphos: MICROWAVE COOKIES

- 2 cups sugar
- 1/4 cup cocoa
- 1/2 cup milk
- 1 stick margarine (1/4 pound)
- 1 teaspoon vanilla
- Pinch salt
- 1/2 cup peanut butter (smooth)
- \*3 cups quick oatmeal

Combine sugar, cocoa, milk and margarine in a 2-quart glass mixing bowl; bring to a boil (full boil) in microwave. Boil 1 minute. Remove from microwave and add peanut butter, salt and vanilla. Stir to mix well. Have the oatmeal in a large bowl. Pour the hot chocolate mixture on the oatmeal. Mix quickly and drop by either ta-

blespoon or teaspoon depending on the size of cookie you desire onto waxed paper.

\*If you don't have instant oatmeal, put regular oats in a blender and switch on and off a few times and you have instant oatmeal.

\*\*\*\*\*

Lucille Wohler, Clay Center: "Fresh rhubarb is best to use, frozen sometimes causes it to be too juicy."

### RHUBARB DELIGHT

- 4 cups rhubarb, cut into 1/2-inch pieces (can use more if desired)
- 1 cup sugar
- 1 small package strawberry gelatin
- 1/2 cup water
- 1 white cake mix
- Butter

Whipped topping or ice cream

Spread rhubarb in bottom of a 9-by-12-inch glass baking dish. Sprinkle sugar and gelatin over rhubarb. Pour 1/2 cup water over. Sprinkle cake mix (dry) over mixture and dot with butter. Bake at 350 degrees for 1 hour. Top with whipped topping or ice cream.

\*\*\*\*\*

Mary Longren, Holton: "Do not be put off by the unlikely mix of ingredients for this sandwich. It is very satisfying served as a quick lunch."

### OPEN-FACED SUMMER SANDWICHES

Spread mayonnaise on a slice of bread then layer the following:

- 1 slice tomato
- Several slices of shaved ham
- 1 slice canned pineapple
- 1 slice American cheese

Broil just until cheese is melted. This makes one serving.

\*\*\*\*\*

### Kellee Rogers, Topeka: ZUCCHINI QUICHE

- 2 cups finely diced unpeeled zucchini
- Salt
- 1 1/2 tablespoons butter
- 1 small onion, diced
- 1 tablespoon flour
- 4 eggs
- 1 1/2 cups shredded Swiss cheese
- 2 cups milk
- Pinch basil
- Pepper
- Pastry for a 9-inch pie

Sprinkle zucchini with salt. Let stand 30 minutes then rinse and drain and blot dry with paper towels. Melt butter in skillet and saute onion until tender. Add zucchini and flour and cook 1 minute. Combine in a bowl with eggs, cheese, milk, basil and salt and pepper to taste. Pour into unbaked pastry shell and bake at 400 degrees

for 15 minutes. Reduce heat to 350 degrees and bake 20 minutes more or until quiche is set and slightly puffed. Let stand 15 minutes before cutting.

\*\*\*\*\*

### Noel Miller, Maple Hill: CORNMEAL BOATS WITH PORK OR CHICKEN FILLING (CHALUPAS)

- 3 cups masa harina
- 1/2 teaspoon salt
- 1/3 cup plus 2 tablespoons corn oil or other vegetable oil or melted vegetable shortening
- 1 1/2 cups lukewarm water
- 1 cup shredded, cooked pork or chicken
- 1/2 cup finely chopped onion
- 1 cup crumbled queso fresco or feta cheese
- Fresh Mexican salsa

Place the masa harina in a bowl. Add the salt, 1/3 cup oil and the water. Using your fingers, mix to form a soft dough that is not sticky. Divide into 12 equal balls. Roll each ball into a strip 5 1/2 inches by 1/2 inch. Cover the lower surface of an opened tortilla and press with a sheet of plastic wrap that extends beyond its edges and place a dough strip in the center. Cover with another sheet of plastic wrap. Lower the top and push down gently. The (chalupa) boat should be an oval 1/8-inch thick (you can also use a rolling pin if you don't have a press). Open the tortilla press and peel off the top sheet of plastic wrap. Using the bottom sheet, lift the chalupa from the press and turn it over onto your hand. Peel off the bottom sheet. Meanwhile, heat a heavy frying pan over medium-high heat. Gently place the chalupa on the preheated

surface. Cook until the edges begin to dry out, about 45 seconds. Turn and cook the other side until lightly browned, about 45 seconds, at the same time pinching up the edges of the cooked side to form a rim (edges of the boat). Turn once again and cook the first side until edges begin to brown, 45 to 60 seconds. Transfer to a plate and cover with a cloth until all the boats are cooked and ready (at this point you can set them aside for up to 3 hours). Just before serving, preheat the pan over medium-high heat. Place the chalupas (boats), a few at a time and rim sides up, on the hot surface and drizzle evenly with the 2 tablespoons oil. They are warmed through when the oil begins to sizzle (this step may be omitted if you want to serve them right away). Transfer to individual plates and top with warm meat, onion, cheese and salsa — or whatever floats your boat! Serves 6. Enjoy!

\*\*\*\*\*

Sandy Hill, Eskridge: "Good for summertime on the grill. I serve potato salad with it."

### GRILLED REUBEN BURGERS

- 1 envelope Lipton Recipe Secrets onion soup mix
- 1/2 cup water
- 1 1/2 pounds ground beef
- 1/2 cup shredded Swiss cheese
- 1 tablespoon crisp-cooked crumbled bacon or bacon bits
- 1/2 teaspoon caraway seeds, optional

In a large bowl combine all ingredients and shape into 6 patties. Grill or broil until done. Top, if desired,

with heated sauerkraut and additional bacon. Makes 6 servings, you can also use onion mushroom soup mix.

\*\*\*\*\*

### Marcia Emig, Goodland: STRAWBERRY LEMONADE SLUSH

- 10-ounce package frozen sweetened strawberries, thawed
- 3/4 cup pink lemonade concentrate
- 3/4 cup water
- 3/4 cup ice cubes
- 1 cup club soda

In a blender combine the strawberries, lemonade concentrate, water and ice cubes. Cover and process until smooth. Pour into a freezer container and cover and freeze for at least 12 hours or up to 4 months. Let stand at room temperature for 1 hour before serving. Stir in club soda. Yield: 4 servings.

\*\*\*\*\*

### Mary Rogers, Topeka: STRAWBERRY RHUBARB COBBLER

- 6 cups sliced rhubarb
- 1/2 cup sugar
- 3-ounce package strawberry gelatin
- 9-ounce package Jiffy Yellow Cake Mix
- 1/2 cup unsalted butter, melted

Heat oven to 350 degrees. Coat an 11-by-7-by-2-inch baking dish with spray. Place rhubarb in baking dish and sprinkle with granulated sugar and then gelatin. Sprinkle the cake mix over the gelatin and then drizzle with 3/4 cup water. Stir in the melted butter. Bake at 350 degrees for 50 minutes. Remove from oven and cool on rack 15 minutes. Can serve with whipping cream.

\*\*\*\*\*

## FIND WHAT YOU WANT AND NEED IN

Since 1954

# GRASS & GRAIN

Published by AG PRESS

### PRINT SUBSCRIPTION

- 3 Years \$101<sup>00</sup>
- 2 Years \$75<sup>00</sup>
- 1 Year \$41<sup>00</sup>

The above rates are for Kansas, western Missouri, and southern Nebraska (zip codes beginning with 640 through 645 and 660 through 689).

### OUTSIDE AREA

- 3 Years \$122<sup>00</sup>
- 2 Years \$89<sup>00</sup>
- 1 Year \$48<sup>00</sup>

### ADD ONLINE TO YOUR PRINT SUBSCRIPTION FOR \$2 A MONTH

- 1 Year \$24<sup>00</sup>
- 2 Years \$48<sup>00</sup>
- 3 Years \$72<sup>00</sup>

**Call Toll-Free: 877-537-3816**

or

**785-539-7558**

Subscribe online: [grassandgrain.com](http://grassandgrain.com)

MAIL TO (please print):

Name: \_\_\_\_\_

Address: \_\_\_\_\_

GRASS & GRAIN • BOX 1009 • MANHATTAN, KS 66505

## ELECTRIC POWER STEERING

## ONCE AGAIN BRAINS BEATS BRAWN

### Coffey County Honda

105 South Main, New Strawn, KS 66839  
1-800-279-3650

honda.com UTILITY ATVs ARE RECOMMENDED ONLY FOR RIDERS 16 YEARS OF AGE AND OLDER. ATVs CAN BE HAZARDOUS TO OPERATE. FOR YOUR SAFETY BE RESPONSIBLE. READ OWNERS MANUAL. ALWAYS WEAR A HELMET, EYE PROTECTION & PROTECTIVE CLOTHING. BE CAREFUL ON DIFFICULT TERRAIN. ALL ATV RIDERS SHOULD TAKE A TRAINING COURSE. FREE FOR NEW BUYERS. ASK YOUR DEALER OR CALL ASI AT 800-887-2887. NEVER RIDE UNDER THE INFLUENCE OF DRUGS OR ALCOHOL. ON PAVED SURFACES, ON PUBLIC ROADS, WITH PASSENGERS, AT EXCESSIVE SPEEDS, NO STUNT RIDING. RESPECT THE ENVIRONMENT WHEN RIDING. FourTrax® Foreman® and Best on Earth® are registered trademarks of Honda Motor Co., Ltd. (3/03) 08-0358

# AUCTION

## SATURDAY, AUGUST 23 — 10:00 AM

Auction will be held in Kenwood Hall at the Saline Co. Expo Center in SALINA, KANSAS

#### CAR & SCOOTER

1993 Lincoln Town car white color, 42,000 miles; 1996 Honda Odyssey 4 door car, 82,240 miles; 1985 Executive 38' motor home 39,000 miles; Honda ST90 scooter.

#### GUNS, COLLECTIBLES

Winchester 12 ga trap model 1400; Ira Johnson 410 single shot; Remington 22 pump 12C; Inter Arms 22 pump 625A; Marlin 22 model 60; Marlin 30-30 lever model 336; Marlin Canadian Centennial Mosburg 20 ga; Jakar Spain black powder rifle; JC Higgins

#### horse collection; collection Beane Babies.

#### HOUSEHOLD & TOOLS

Oak china cabinet; one curio cabinet; 4 piece king bedroom set; Zenith 32" TV; jewelry cabinet; Baldwin Fun machine; 60's couches & foot stools; patio table & chairs; Toro 1000E snow blower; Toror Snowpup snow blower; Craftsman 70 snow blower; Lawn Boy 21" lawn mower; yard tools; Craftsman router & table; large assortment electric tools; assortment hand tools.

See last week's Grass & Grain for complete listing.

Note: This is a very large auction. There is a large amount of jewelry. Many items not listed. We will run 2 rings part of the day. Check our web site for pictures at [www.thummelauction.com](http://www.thummelauction.com).

### FRANCES LEE MCCLINTOCK TRUST

Auction Conducted By  
Thummel Auction  
Beloit, Kansas • 785-738-5933



**Millie Conger, Tecumseh:  
COCKTAIL CAKE**

- 1 1/4 cups sugar
- 1/2 cup oil
- 2 eggs
- 2 cups flour
- 2 teaspoons baking soda
- 1/2 teaspoon salt
- 15.25-ounce can fruit cocktail, undrained
- 1/2 cup flaked coconut

Preheat oven to 350 degrees. Lightly greased a 9-by-13-inch pan. In a bowl beat sugar, oil and eggs until fluffy. In a bowl combine flour, baking soda and salt. Add sugar gradually (will be thick). Stir in fruit cocktail and pour into pan. Sprinkle with coconut. Bake 40 to 45 minutes. Pour frosting over hot cake then sprinkle with nuts.

**Frosting:**

- 3/4 cup sugar
- 1/2 cup butter
- 1/2 cup evaporated milk
- 1/2 cup coconut
- 1 teaspoon vanilla

In a pan combine sugar, butter and milk. Bring to a boil and boil for 2 minutes, stirring occasionally. Stir in coconut and vanilla.

\*\*\*\*\*

**Free Weekly  
Recipe  
Available Online**

Included as part of *Grass & Grain's* website is a "Free Weekly Recipe." You need not be a subscriber to view this recipe. Go to [www.grassand-grain.com](http://www.grassand-grain.com) and at the bottom left click on Our Daily Bread Free Weekly Recipe.

Some recipes will be selected from submissions received from area cooks while others may be suggested favorites. You may also share the recipe with friends and family by clicking on the "email page" button.

*This week's recipe is Mexican Chicken Penne from Sandy Hill, Eskridge*

# Proper Handling Needed For Vacuum Sealed Foods

STILLWATER, Okla. — With the rising cost of food these days, consumers are looking for different ways to extend the shelf life of food while maintaining its quality.

There are a number of systems marketed for vacuum packing foods at home. Vacuum sealing may extend the storage time of refrigerated foods, dried foods and frozen foods, said Barbara Brown, Oklahoma State University Cooperative Extension Service food specialist.

"While vacuum sealing has the ability to extend the shelf life and quality of food, it's not a substitution for the heat processing of home canned foods, nor is it a substitution for refrigerator or freezer storage of foods that would otherwise require it," Brown said. "Consumers must keep in mind that perishable foods must still be refrigerated or frozen for storage after packing in a vacuum or partial vacuum environment."

When considering vacuum packaging, consumers must assume that the perishable food carries the risk of potential pathogenic contamination. When frozen foods that have been vacuum sealed are ready to be thawed, steps to minimize risks from microorganisms in food must be followed.

Brown said that producing a vacuum means removing air from the contents of the package. Oxygen in the environmental air promotes certain reactions in foods which cause deterioration of quality.

"Oxidative rancidity of fats in food is promoted by oxygen. Removing the oxygen can help preserve certain quality characteristics and extend the food's shelf life based on quality," she said.

It is important for consumers to keep in mind that removal of oxygen from the environment does not eliminate the possibility for all bacterial growth. What is most likely to be eliminated is the growth of spoilage bacteria. This is the type of bacteria that normally spoils the quality of food in noticeable ways such as an off-color, odor or sliminess. When these bacteria are able to multiply on food they are able to let a consumer know the food is bad

before it reaches the point of making a person sick.

"In a nearly oxygen-free environment like vacuum packaging creates, the spoilage bacteria don't multiply very fast so the loss of food quality is slowed down," Brown said. "However, some illness-causing bacteria actually like the low-oxygen environments and reproduce well in vacuum-packaged foods. Without competition from spoilage bacteria, some pathogens are able to reproduce even more rapidly. Unfortunately, these bacteria often don't produce noticeable changes in the food."

Food may become unsafe from pathogenic bacterial growth with no indicators such as odor or off-color to warn the consumer. Refrigeration at 38 to 40 degrees Fahrenheit is a critical step for storage of low-acid, vacuum-packaged foods that are not otherwise shelf stable.

Brown said vacuum packaging can also be safe for foods that are stored frozen. Keep in mind, though, that proper thawing under conditions that minimize bacterial growth would be essential. She also noted that there is no advantage to combining the use of a vacuum packaging machine with boiling water or pressure canning of foods. Jars processed in either canner develop sufficient vacuums for safe, stable storage at room temperature.

"These methods also have the added advantage of a heat process that kills pathogenic bacteria that are able to grow in food at room temperature," she said.

It is important to always keep food safety in mind.

Perishable foods still need to be treated carefully in order to prevent pathogens from making them unsafe. Removing the oxygen from a food's environment does not solve some food storage problems — it can actually cause other problems.

"Consider how carefully safe food handling practices will be followed at all times since vacuum packaging creates good conditions for some pathogens to be a problem if any mistakes are made," Brown said. "Always make sure all surfaces, utensils and your hands are clean when packaging foods for storage. Follow safe thawing methods and use a food thermometer when cooking. If you see any signs of spoilage the food should be discarded."

## ADULTS – EARN A MANHATTAN HIGH SCHOOL DIPLOMA AT OPEN DOOR

- Flexible Schedule
- Work at your own pace
- Begin where you left off
- Affordable low fees

**ENROLL NOW! 785-539-5928**  
205 South 4th Manhattan, KS 66502

**FOR SALE**  
**Colorado Fruit!**  
**PEACHES 25# \$34**  
**PEARS 25# \$25**  
*Includes sales tax*  
**Durham, Kansas 67438**  
**300th & Falcon Road**  
**1-620-732-3826**

**Back Pain & the DRX9000™**

**Non-Invasive. Non-Surgical.**

**With the DRX9000™, You Can Take Hold of Your Life Again!**

- Reduce your back pain.
- Reduce your symptoms.
- Reduce your disability.
- Improve your quality of life

**About the DRX9000™**

- The DRX9000™ is effective in treating low back pain associated with herniated discs, bulging discs and degenerative disc disease, allowing patients to return to an active lifestyle.

**Treatments on the DRX9000™**

- Consists of 20 sessions over a period of six weeks.
- Each session lasts 30 minutes.
- Following each therapy session, a cold pack and/or electrical stimulation is applied to help restore muscle tone.

**Now Accepting Blue Cross -Blue Shield**

**Dr. Scott D. Iversen**  
630 Poyntz • Manhattan, KS  
Call Today! 785-776-7568

**THE ANNUAL**  
**Luck of the Irish**  
**TOY SHOW**  
**LABOR DAY, MONDAY**  
**SEPTEMBER 1st, 2008**  
**10:00 AM TO 5:00 PM**  
**CHAPMAN HIGH SCHOOL**  
**MULTI PURPOSE ROOM**  
**400 West 4th, Chapman, Kansas**  
**Proceeds go to FFA Scholarships**  
*Sponsored by The Chapman FFA Alumni*

**Brush and Pasture Management**  
**Field Day**  
*Presented by K-State Research and Extension/  
Osage, Franklin, Douglas and Miami County*  
**Thursday, August 28, 2008**  
**1 1/2 miles East of Ottawa, KS on K68 Highway,  
off Ohio Street. WATCH FOR SIGN.**

**FIELD DAY SCHEDULE:**

- 3:00 PM Registration Begins
- 3:30 PM Pasture Management Discussions including:
  - Weed Control • Cool season grass fertility
  - Legumes in cool season grasses • Stocking rates
  - Grazing management
- 4:30 PM Brush plot demonstration walk through
- 5:30 PM Dinner
- 6:00 PM Pasture management equipment field demonstration

*Area Extension Specialists and many commercial companies will be on hand and will make presentations.*

**For more information contact:**  
**Rod Schaub, 785-826-4438 or Bill Wood, 785-843-7058**

**KSTATE Research and Extension** *Sponsored By:* **580 WIBW**

K-State Research and Extension is committed to making its services, activities, and programs accessible to all participants. If you have special requirements due to a physical, vision, or hearing disability, please call Rod Schaub, Osage County Extension Agent, Ag at 785-826-4438 or Bill Wood, Douglas County Extension Agent at 785-843-7058. K-State Research and Extension is an equal opportunity provider and employer. All Kansas Extension educational programs and materials are available to all individuals without discrimination on the basis of race, color, national origin, sex, age or disability.

**AUGUST**  
**"Our Daily Bread"**  
**Recipe Contest Prize**

**SET OF 12 MAGNETIC NOTEPADS**



A cute new design for every month of the year! This set, with signature artwork by Diana Marcum, will take you from January to December. Each 30-sheet pad includes a magnet on the back.

Measures 9 by 3 1/2 inches.

The winner each week is selected from the recipes printed.

Send us your favorite recipe. It may be a main dish, leftover, salad, side dish, dessert, or what-have-you.

1. Check your recipe carefully to make certain all ingredients are accurate and instructions are clear.
2. Be sure your name, address and phone number are on the entry. Please include a street address with your recipe entries. A post office box number is not sufficient for prize delivery. Allow 3-4 weeks for delivery.
3. Send it to: Woman's Page Editor, Grass & Grain, Box 1009, Manhattan, KS 66505. OR e-mail at: [agpress2@agpress.com](mailto:agpress2@agpress.com)

# LABOR DAY AUCTION

**MONDAY, SEPTEMBER 1 — 9:30 AM**  
**421 S. Ash (OLG Hall) — NEWTON, KANSAS**  
**100+ SHOWCASES FULL OF COLLECTIBLES**  
Check our website for 44+ photos.

**COINS**  
Silver dollars; Susan B Anthony dollars; Walking Liberties; Kennedy halves; Buffalo nickels; silver quarters; silver Truman dimes; Mercury dimes.

**AMMO, HUNTING, FISHING, TOOLS & AUTOMOTIVE**  
Antique ammo and boxes; Lyman Ideal reloading equipment; Remington Kleanbore Express; Winchester Super X; Federal Gold Metal Extra Lite; Lellier Bellot SB field load; Concorde; Western Super X; Remington Kleanbore; Peters High Velocity; Federal High Power; Frontier cartridges; Norman; Western Expert; Sears Target load; PMC Zapper 22; Peters "Victor"; JC Higgins Xtra Range; old wooden duck decoy; old fishing reels; antique tools; Keen Kutter tools; old gas cans; old oil cans and bottles; old Skelly grease tub.

**TOYS**  
Tootsie Toys; old Erector set; old comic books; old marbles; old original Barbie dolls; old original Barbie by Mattel clothes; old original Ken by Mattel doll and clothes; old Sew-Along Barbie clothes; old Chatty Cathy by Mattel clothes; old doll clothes; old Dolly Travelette case; old GI Joe; old antique games; old metal US Mail toy truck; old cap guns.

**GLASS & POTTERY, CAST IRON**  
Hull planters; McCoy planters; McCoy; Carnival glass; Jewel T; Hull; Hull art; Van Briggie; Hall; Boomerang; cast iron including Wagner, Griswold, Wards, skillets, fryers, waffle irons; boilers; muffin pans, cornbread pans; advertising; Salesman Samples; book ends; bells; cigar mold.

**RAILROAD**  
Atchinson-Topeka Santa Fe; Union Pacific; MO-PAC; old railroad lanterns; old railroad torches; old railroad funnels; old water cooler; old switching lantern; old inspector lamp; old Kero lantern.

**OLD TINS, METAL & PORCELAIN SIGNS**  
Old tins including - Sweet Cuba, Nabisco, Phillips 66, Niles and Moser, Calumet, Monarch, Haupt-Manns, Coors Light, Turmeric, Camel, Kester Radio, old metal and porcelain signs including - Supersweet Feeds, Mountain Dew, Bunny Bread door pulls; Brodhead low

**ash coal, Kraft Pex, Philip Morris, Canada Dry, Dow Farm Chemicals, public telephone, restroom sign; large Coca Cola button; Chevron; Gulf; Pizza Hut; Quaker State motor oil.**

**KITCHEN COLLECTIBLES**  
Old spice jars; antique candy jars; Red Wing crocks No. 20 and No. 5; antique cookie jars; Griswold 2 qt. fruit and lard press; flatware; antique oil lamps; old gumball and peanut machines; old pickle jars; Dazey No. 20, No. 30, No. 40, No. 60 butter churns; Dazey No. 4 patent applied for butter churn; Dazey No. 8 patent applied for butter churn; old Keen Kutter meat grinder; old sugar/creamers; old ash trays; old child's drink set with carrying tin; old Pez dispensers; feed and seed sacks; milk bottles; old salt and pepper shakers; Monterrey Westernware; old peanut jars.

**COLLECTIBLES**  
Old Vickers; old Chesterfield; Coca Cola cooler; Coca Cola serving trays; Coors serving tray; Longaberger baskets; old change separator; 48 star flag; old radio tubes; old RCA Victor; old holiday items; old punch boards; old cigarette lighters; old pocket and hunting knives; many Zippos; military medals and patches; costume jewelry; old pocket watches; gold watches; sterling silver jewelry; old pogs; old postcards; old gas station road maps; old printers blocks; old cards; old Valentines; old scrapbooks; old picture albums; old match books; old Coleman printers blocks; Boeing, Beechcraft, Boeing service pins; old quilts; lots of Indian blankets, rugs, serapes; old Bull Durham posters; old Winchester gun poster; Art Deco clock; Majikooler leisure chest; old advertising buttons; old political buttons; old Union buttons; old Elvis record albums; old Beatles record albums; baby scales; old buttons; old Snooker balls; old pool balls; globes; old Chevy advertising; old Conoco advertising; old calendars; original Barbie Google and spark plug book; old Charlie Chaplin book; Bringing Up Father book by Geo McManus; old deeds dating in the 1800's; original Batman and Robin trading card; bicycle license plates; belt buckle collection.

**100 plus boxes yet to be opened. Guaranteed surprise.**

**NOTE: Cash or check with proper ID as payment. Visa and Mastercard accepted. Not responsible for theft or accidents. Announcements made sale day take precedence over printed matter. Nothing removed until settled for.**

**Auction Specialists, LLC**

**Fax: 316-282-SOLD or**  
**Email: [auctions@auctionspecialists.com](mailto:auctions@auctionspecialists.com)**  
**Website: [www.auctionspecialists.com](http://www.auctionspecialists.com)**  
**Vern Koch CES, 316-283-6700 Mike Flavin, 316-283-8164**



# USDA raises corn estimates on 'ideal' weather

WASHINGTON (AP) — Farmers are on pace to produce the second largest corn crop and fourth largest soybean crop in history, which may lead to lower prices for the key grains, the government said Tuesday.

In its first estimates this year based on actual field visits and farmer surveys, the U.S. Department of Agriculture raised its estimate of corn production and said "nearly ideal" weather has helped Midwestern farmers recover from June's devastating floods.

That recovery is expected to lead to lower prices for corn, soybeans and wheat. That may provide some relief to meat producers who use corn and soybeans for feed, for makers of corn-based ethanol and maybe even

for shoppers at supermarkets.

The department forecast that farmers will harvest 12.3 billion bushels of corn, up more than 570 million bushels from last month's estimate of 11.7 billion. That's down 6 percent from last year's record crop of 13.1 billion bushels, but 17 percent above the 2006 harvest.

Average corn prices this year are expected to drop to \$4.90 to \$5.90 per bushel, down 60 cents from last month's forecast of \$5.50 to \$6.50.

Corn prices soared to record levels near \$8 after the floods, the worst to hit the Midwest in 15 years. But cooler, wetter weather since then will boost corn yields to 155 bushels per acre, up from last month's estimate of 148.4, the department said.

Corn prices have already dropped to almost \$5 per bushel, though that is still higher than in 2006, when a bushel cost \$2.

The department has lowered its estimate for soybeans a bit, to 2.97 billion bushels from 3 billion last month.

Still, soybean prices are also expected to fall to \$11.50 to \$13 per bushel, down 50 cents from \$12.00 to \$13.50 last month, the department said.

High grain prices have virtually eliminated profits for chicken and beef companies this year. Springdale, Ark.-based Tyson Foods Inc., the world's largest meat company, said last month that its third-quarter profit fell by 90 percent due to higher feed prices.

Pilgrim's Pride Corp. the nation's largest chick-

en producer, said July 29 that it swung to a loss of \$52.8 million, from profit of \$62.6 million in its third quarter due to higher prices.

Ethanol producers such as Archer Daniels Midland Co. are also affected. VeraSun Energy, a Brook-

ings, S.D.-based ethanol producer, delayed the opening of a plant until late July due to high corn prices.

The department raised its estimate of the amount of corn that will be used for ethanol production to 4.1 billion bushels, up from

last month's estimate of 3.95 billion.

The department also slightly boosted its forecast of wheat production by 2 million bushels, to 2.462 billion, and projected that wheat prices will average \$6.50 to \$8, down 25 cents from last month.

## ANTIQUA AUCTION

MONDAY, SEPTEMBER 1 — 10:00 AM

Auction will be held in Kenwood Hall at the Saline Co. Fairgrounds in SALINA, KANSAS

### FURNITURE

Burled walnut drop front desk; walnut bachelor chest w/marble top; burled walnut chest w/hanky drawers; walnut etagere; unusual Oriental side board; 2 Oriental chests; Oriental jewelry box; oak ladies drop front desk; oak love seat; French Provencal bedroom set; mahogany 20's drop front desk; walnut spinet desk; walnut corner shelf; walnut sewing rocker; painted dish cupboard; flat top trunk; camel back trunk; sewing cabinet; folding sewing table; modern furniture inc.: oak 5 piece king bedroom set; pecan dining table & chairs; Henredon divan; marble top coffee & end tables; divan & chair; dinette table & chairs.

### GLASS

RS Prussia chocolate pot, cups & saucers; Roseville 741; Fenton basket; ribbon glass

hurricane lamps; cut glass table lamp; enameled lamps; lady lamps; hanging prism crystal lamp; 4 cactus tumblers; cut glass hair receiver, candle holders, nappy, basket & vase; art glass vase; 16 place Occupied Japan china; child's Bavaria Cupid 6 place china set; child's tea set; Cranberry glass pieces; mini cups & saucers; several peach blow pieces; pitcher & glasses; vases; condiment set; Austria dresser set; Lefton hands; collection hand vases; enameled tea pot; enameled vases; satin blue vase; assortment blue glass; peacock vase; pink cruet; etched glass pitchers; 50's glasses; large assortment of other glass.

### COLLECTIBLES

1800's Napoleon jewelry box; Van Briggel lamp w/shade; Indian vase; Swarovski Austria crystal figurines; Aladdin 12

lamp; Aladdin table lamp; china clock; bronze fairy; Kavanaush's tea box; Salina Candy wood bucket; Cupid rug; wicker doll buggy; walnut doll bed & chair; wicker doll buggy; doll swing; doll houses; child's dresser; doll furniture; toy stove; turtle match holder; Wagner mini waffle iron; mini curler & razor; assortment pictures; games; assortment costume jewelry; pewter elephant & dog; crochet bedspread; quilt; silver tea set; animal collection; figurines; Wyatt cast iron frog paper weight; Boy Scout uniform; Colgate Talc tin; Peter Rabbit tin; green covered stove box; camel ink well; several lighters; humidior; Detelgran; post card album; chrome tea set; metal ship; collection books; Christmas items; dough bucket; large assortment collectibles.

Note: This is a very large quality auction. Check our web site for pictures at [www.thummelauction.com](http://www.thummelauction.com).

HELEN SERRAULT TRUST

Auction Conducted By  
Thummel Auction  
Beloit, Kansas • 785-738-5933

### WHAT WILL PINKEYE COST YOU THIS YEAR \$\$? \$\$\$?!



LIVESTOCK SELF TREAT THEMSELVES  
[www.flykillercover.com](http://www.flykillercover.com)



THE FLY KILLER KOVER  
DESIGN AND UTILITY PATENTS  
PENDING

YOUR COST \$298.00 DELIVERED  
SEND CHECK TO F&B MANN PRODUCTS  
PO BOX 274 WATERVILLE, KS 66548  
1-785-363-2655  
[fbmann2300@sbcglobal.net](mailto:fbmann2300@sbcglobal.net)

## You Can Have Your Cake And Eat It Too! At The South Central Nebraska Gelbvieh Tour



10 Breed Leading Genetic Suppliers!

3 Stops!

1 Day!

August 23, 2008

9:30 a.m. Check in

10:00 - 11:30 Lemke Cattle Co. - Lawrence, NE  
- Including: MLM Gelbvieh and Goldrush Genetics  
- Speaker: Wayne Vanderwert, AGA

12:00 - 3:00 Voss Farms - Bruning, NE  
- Including: Tegtmeler Cattle, Kleinschmidt Farms, M&P Gelbvieh, Bruning Farms  
- Speaker: Rick Pfortmiller/Jim Gibb, Igenity

3:30 - 6:00 Rippe Gelbvieh - Hubbell, NE  
- Including: Bauer Gelbvieh  
- Speaker: Twig Marston, UNL Northeast Research / Extension Center Director / Beef Specialist

MC: Twig Marston - UNL

Brought to you by:

**GAIN**  
Gelbvieh Association In Nebraska

MAJOR TOUR SPONSORS  
Elanco • Igenity • ADM

For details contact:  
Clay Mead, GAIN  
402-480-3425  
or Duane Rippe  
402-324-4176

## LAND AUCTION

FRIDAY, SEPTEMBER 5 — 1:30 PM

TO BE HELD AT THE HANOVER FAIRGROUNDS, NEW BUILDING — HANOVER, KS  
469 ACRES — SOLD IN 3 TRACTS

### TRACT 1: 80 acres

LOCATION: From the Hanover Corner on Hwy. 148, Go 1/2 Miles South, 1/2 Mile East & 1/4 Mile South to the NW Corner.

LEGAL DESCRIPTION: The South Half of the Northeast Quarter (S1/2NE1/4) Section Fifteen (15), Township Two (2) South, Range Five (5) East of the 6th P.M. Washington, County, Kansas. Subject to Easements, Restrictions, & Reservations, Whether of Record or not & Subject to All Legal Roads.

GENERAL DESCRIPTION: This Tract has 68 Acres of Tillable Cropland & the Balance is Waterways, Meadow & Timber Draws. Terraces were rebuilt in 2007. Base Acres & Yields are: 27.9 ac. Wheat, 35 bu. Yield, 38 ac. Milo, 64 bu. Yield.

TAXES: 2007 Taxes were \$478.00. 2008 Taxes Paid by the Seller.

### TRACT 2: 232 acres

LOCATION: From the Hanover Corner on Hwy. 148, Go 1 1/4 Miles South & 1 Mile East to the Northwest Corner. (1/4 Mile South of Tract 1).

LEGAL DESCRIPTION: The South Half of the Southwest Quarter (S1/2SW1/4) Section Fourteen (14), Except Fraction on (Site) & the Northeast Quarter (NE1/4) of Section Twenty-Three (23) All in Township Two (2) South Range Five (5) East of the 6th P.M. Washington, Co., Kansas, Subject to Easements, Restrictions & Reservations, Whether of Record or not & Subject to All Legal Roads.

GENERAL DESCRIPTION: This Tract has 94 Acres of Tillable Land w/Terraces & Waterways in Place, Balance is Good Native Grass Pasture w/Some Timber Draws, Creek, Pond, Meadowland & Waterways. The Cropland Includes 22 Acres of Bottomland with the Balance Gently Sloping & 11.5 Acres of CRP Land. CRP Payment is \$503.00 Per Year & Expires 9-30-09. Base Acres & Yields are 34.5 Acres Wheat, 35 bu. Yield & 47.9 Acres Milo, 64 bu. Yield.

TAXES: 2007 Taxes were \$1,050.00. 2008 Taxes Paid by the Seller.

### TRACT 3: 157 Acres +

LOCATION: From the West Edge of Hanover, KS, Go 3/4 Mile West to the Northeast Corner.

LEGAL DESCRIPTION: The Southeast Quarter (SE1/4) of Section Seven (7), Township Two (2) South, Range Five (5) East of the 6th P.M. Washington, County, Kansas. Subject to Easements, Restrictions, & Reservations, Whether of Record or not & Subject to All Legal Roads.

GENERAL DESCRIPTION: This Tract has 110 Acres of Terraced Cropland, Balance Being Native Pasture, Pond & Waterways. The Cropland Consists of 12 Acres of Bottomland with the Balance Gradual to Gently Sloping. Base Acres & Yields are 45.6 ac. Wheat, 35 bu. Yield & 62.8 ac. Milo, 64 bu. Yield.

TAXES: 2007 Taxes were \$1,100.00. 2008 Taxes Paid by Seller.

INSPECTION: TRACTS are Open for Inspection at any Time, However Sellers will not be Responsible for Accidents During Inspection.

POSSESSION: Buyers will have Possession at the Completion of Fall Harvest 2008. Sellers will Retain All Cash Rents & CRP Payments & Direct Payments for 2008. Possession of Pasture & Wheatland on Closing.

TERMS: 15% Earnest Money Deposit to be Made Day of Sale Upon Signing Purchase Agreements Day of Sale, Balance will be Due in 30 Days at Which Time a Deed & Title Insurance Commitment will be Deliverable to the Buyer. Title Insurance & Closing Costs will be Shared Equally by Buyer & Seller. Farms are not being Sold Subject to Loan Approval. Make All Necessary Arrangements Prior to Sale. Schultis & Son, Inc. are Agents of the Seller in this Transaction. Seller Retains 50% of Mineral Rights for 20 Years. TRACTS are being SOLD Subject to Seller Confirmation & Any Announcements Day of Sale Take Precedence.

IF ADDITIONAL INFORMATION IS NEEDED CALL WAYNE AT 402-729-2435 OR 402-729-3013 (HOME) DECENT HOURS.

NOTE: Auction Starts At 1:30 P.M. Be On Time!!!!

S.S. & P. FARMS, INC.



SCHULTIS AND SON, INC.  
REAL ESTATE &  
AUCTION SERVICE  
222 W. 14th St., BOX 582  
FAIRBURY, NE 68352

OFFICE 402-729-2435  
WAYNE SCHULTIS 402-729-3013

Visit us on the web at [www.schultis.com](http://www.schultis.com)



# Visitors Day Sept. 27 at Konza prairie

The opportunity for an up-close look at the Kansas Flint Hills and the tallgrass prairie will come when Kansas State University's Konza Prairie Biological Station holds its biennial Visitors' Day, Saturday, Sept. 27.

The Konza Prairie Biological Station is a preeminent center for grassland research. The 8,600-acre native tallgrass prairie preserve is dedicated to a three-fold mission of long-term ecological research, education and prairie conservation.

For Visitors' Day, the Konza will open its gates from 8 a.m. to 4 p.m., offering guided access to its restricted areas and giving everyone the opportunity to see the bison herd or hike the trail system. Visitors also will see live animal displays and research exhibits at the station headquarters, while learning about tallgrass prairie conservation and management. Konza Prairie researchers, docents and staff will provide information about research being conducted at the Konza, history of the

site, Flint Hills geology, tallgrass prairie flora and fauna, and other natural history.

Other activities to be offered include driving tours of the bison enclosure, hay wagon rides, tours of the Hokanson homestead along Kings Creek and guided hikes. Special activities for youth will be at the Hulbert Education Center in the lower level of the ranch house.

"There's something for the whole family," said Valerie Wright, environmental educator for the

Konza Prairie. "Kids can become a junior ecologist by completing some fun activities or collect grasshoppers for the hopper display."

The Friends of the Konza Prairie will be on hand to offer Konza Prairie T-shirts, hats, posters, mugs and other items for sale. The Nature Conservancy will host an information booth and offer book sales.

The Konza Prairie Biological Station is owned by The Nature Conservancy and K-State, and is

operated as a field research station by the K-State Division of Biology. Konza Prairie is six miles south of Manhattan along McDowell Creek Road. To get to the station headquarters, take Konza Lane past the nature trail kiosk. The headquarters is located around the corner to the right.

While most of the Konza

is closed to visitors the rest of the year, a six-mile series of nature trail loops is open to the public year round from dawn to dusk. For more information, contact Wright, at 785-587-0381 or [konzaed@k-state.edu](mailto:konzaed@k-state.edu). More information on the Konza also is available online at [www.k-state.edu/konza/keep/visit/visitors.htm](http://www.k-state.edu/konza/keep/visit/visitors.htm).

## LAND AUCTION

80 Acres Marion Co., KS  
THURSDAY, AUGUST 28 — 7:00 PM  
Sale held at the Pilsen Community Center  
PILSEN, KANSAS

**LAND LOCATION:** From Pilsen, 2 1/2 miles North on Remington, then 1/4 mile West on 300th.

**LEGAL DESCRIPTION:** West 1/2 of Southeast 1/4 of Section 1, Township 18 South, Range 3 East, Marion County, Kansas.

**LAND DESCRIPTION:** 21.76 Acres cultivated cropland (all currently planted to soybeans); the balance of the tract is brome grassland with two wet season draws with trees.

**TAXES:** 2007 taxes were \$227.26.

**MINERALS:** All Seller's minerals transfer with the land to Buyer. There is no current production.

**NOTE:** A nice 80 with the combination of good cropland and established brome grass. If you like to hunt, the two small wet season draws with trees offer diverse hunting possibilities. Come take a look and you will certainly like this tract of land!

**TERMS:** Earnest money deposit in the sum of \$10,000.00 due day of sale, payable to Hannaford Title Co. The balance will be due on or before September 29, 2008.

### LAWRENCE TAJCHMAN LIVING TRUST

LEPPKE REALTY & AUCTION

501 S. Main, Hillsboro, KS 67063 - 620-947-3995

[www.leppke.com](http://www.leppke.com)

LYLE LEPPKE, Auctioneer/Broker - 620-382-5204;  
ROGER HIEBERT, Auctioneer/Sales Assoc. - 620-382-2963

## ATTENTION

### Clay County Wind Energy

"The REAL Clean Energy"

Lighten the Load

Make the country green

We are now set up to sell the

Sky Stream 3.7

Wind Generator

For more information or

to place an order call

Office • 785-632-6399 Jim • 785-632-4679 Cell  
Home • 785-632-2926 Gail • 785-632-0598 Cell

## Learn Cattle Artificial Insemination at the Agtech A.I. School in Manhattan

Increase your operation's profitability and efficiency by learning the skills and techniques of A.I. in our complete, hands-on cattle A.I. class.



Call 800.367.4016 ext. 1 for class dates  
or email [tpatterson@agtechinc.com](mailto:tpatterson@agtechinc.com)

"We had ample opportunity to handle equipment and time in the cows. I really liked the one on one instruction during problems that we were having once we were in the cows. This is exactly what I was wanting out of this class, maybe more. I feel confident enough to breed my own cows to improve my genetics and relieve breeding costs incurred."

—Phil Williams, Follett, TX

Learn all the skills of A.I. in 2 days for only \$395.00. Classes are held 9am to 6pm with lunch provided both days. A.I. kits and supplies are available for purchase.

Visit [www.agtechinc.com](http://www.agtechinc.com) to learn more about the Agtech training facility and all of our bovine reproduction classes.



Embryo Transfer & Artificial Insemination Products & Training

[www.agtechinc.com/aischool](http://www.agtechinc.com/aischool) • 800.367.4016 • 8801 Anderson Ave, Manhattan, KS

## AUCTION

SATURDAY, AUGUST 30 — 1:00 PM  
3322 Road R7, ADMIRE, KANSAS

Admire is at Highway 99 and 56. At the South side of Admire on Highway 99, go East on 330 to Road R7, and North to auction site.

### TRACTOR

Allis Chalmers 8050 diesel tractor, AC Cab, 3 remotes, 3 pt., Duals, Front suitcase weights, Power Shift, 2372 hours with a new engine at 979 hours, sn—NA

### HAY EQUIPMENT

Case -IH 8460 Round Baler, 6x6, sn CFH0057992, good belts, good gathering wheels, all auto with monitor; Hesston 6650 Self Propelled swather, sn 644, 16' header, AC Cab, 4 cylinder diesel; New Holland 469, 9' pull type PTO swather; Older 10 wheel V rake, pull type.

### TRAILERS

2006 Load Max Gooseneck tandem flatbed trailer, 20' deck, 5' tail, 3-5' rollover ramps, 10,000# axles, 10 ply tires, chain box, spare tire, LIKE NEW; WW Gooseneck Tandem stock trailer, 20'x6', tread plate floor, center gate, full top, 6'6" tall, NO TITLE; 20' hydraulic tilt bed trailer, 2' tail, single axle, pintle hitch, NO TITLE.

### PICKUP & TRUCKS

1995 Ford F250XL flatbed pickup, V8 351, 5 speed, 141,000 miles, with 8'6" x 7' flatbed and electric/hydraulic bale spear with remote, gooseneck ball; 1965 Ford F600 grain truck, 6 cylinder, 4 and 2, 16' metal bed, tread plate floor and single cylinder hoist, 40" sides; 1965 Chevrolet C50 grain truck, 16'

metal bed, single cylinder hoist, 40" sides, NON RUNNER; Chev. 307 V8 motor, 10,000 miles.

### COMBINE

JD 4400 diesel combine, sn 153352, Cab, 15' header.

### PLANTING & TILLAGE

IH 400 6 row Cyclo planter; MF 520 16' tandem disc, manual fold wings; IH 10' wheel disc; 300 gallon field sprayer, incomplete.

### LIVESTOCK & GRAIN EQUIPMENT

Mayrath 40'x6" portable grain auger, PTO; Round bale feeders; 10-4x8 solid metal panels for livestock alley, 1-4x10; Metal feed bunk liners; 12-15 pieces 2 x 31/2x6' 9" metal tubing; Saddle King working saddle; Tack, blankets, bridles.

### OTHER ITEMS

Suzuki 185 4 wheeler; West-ernfeld mM852, 22LR, clip missing; 2-300 gallon Diesel fuel tanks, gauges and stands; 1-300 gallon gas tank; Small cement mixer; Chicago Electric Dual Mig 151 wire welder; Wood burning stove; Gas motors; Hydraulic cylinders; Drill press; Bench grinder; Chain saws; Camping equipment; Hand winches; Exercise equipment; Used tires; MORE.

### HAY

60 bales 2007 Prairie hay; 50 bales 2008 Prairie hay.

PLEASE BE ON TIME, NOT A LONG AUCTION, NOT MANY SMALL ITEMS.

Terms cash or approved check day of auction. Remove all items promptly

SELLERS: DON & KATHY WOOD

**HANCOCK**  
AUCTION & REAL ESTATE  
620-279-4575 or 620-340-5692



# Horsin' Around

By Don Coldsmith



## This Little Piggie

"This little piggie went to market ..." We don't hear that children's rhyme much any more. It's a part of our culture that's being neglected. I suppose that there are a lot of households where it's still in use. Parents or grandparents or even day-care people play with little ones, read to them, and carry on the traditional riddles and rhymes that are part of our culture. Part of our education, actually. The folk stories, songs, and rhymes were valuable teaching tools to help prepare a child for life as a part of the adult world.

It took me a long time to realize that all these nonsensical little ditties actually make sense, when considered in their original context. "This little piggie ..." The big toe, the fattest, is ready for market. The second toe, long and slim "stayed home." It needs to be fatter before it will bring a good price. The next toe: "This little piggie ate roast beef," indicates an animal that eats everything eagerly, while the fourth, which "ate none" is much smaller, not even ready to fatten yet. The fifth toe is a baby, still crying "wee-wee-wee, all the way home" in the high-pitched squeal of a tiny piglet. There, in a few humorous lines, was a practical

lesson for a child who in a few years would be raising pigs.

A similar exercise done with the hands was recalled to me by a small granddaughter recently. It starts with hands folded, fingers interlaced and inside closed fists. "This is the church, and this is the steeple ..." (Index fingers raised, tips together, to form a steeple). "Open the doors and see all the people." Both hands are opened and inverted to show

rows of fingers representing people in church pews. This implied to a child that going to church is good and is expected.

There's a second benefit here, too. The repetitive motion teaches dexterity. Inexperienced little fingers learn to respond skillfully. Similarly, "patty-cake" games not only tell something about baking, but help hand/eye coordination.

My German grandmother had a number of these little

games. One, of which I'm not certain about the origin, was a rhyme similar to "This little piggie," but done on the fingers. I believe that it had two purposes. One was to encourage the use of the hands and improve coordination. The other seems a bit more subtle, but let's consider:

"Five little froggies, all in a row ..." (fingers of course).

"This little froggie broke his toe ..." (the little finger, extended and bent).

"This little froggie (middle finger) laughed and was glad,

This little froggie (index finger) cried and was sad.

But this little froggie, (thumb) kind and good, hopped after the doctor as fast as he could."

The thumb was then

flexed rapidly with a jerking, hopping motion. It could be done in reverse, with the little finger doing the hopping, but it's harder and requires more coordination.

It was years later before I realized the real message in that little exercise. It's a course in emergency management. There are four possible reactions to an emer-

## AUCTION

SATURDAY, AUGUST 23 - 9:00 AM  
3721 North Salina, WICHITA, KANSAS

From 53rd and N. Broadway, West to Arkansas, South to 35th, West to Salina, North to sale.

NOTE: These sellers are in the process of moving. Offered here are a good quality of furniture and appliances as well as a good line of tools for every shop. Plan to attend.

Small ornate buffet; pie safe; ornate dresser; porcelain face stoves; small cast wood burning stove; ornate mantle clock; old dolls; collectible glass; several old quilts; tube type radios; brass fire nozzles, gated and straight; brass and copper extinguishers; Mueller fire hydrant; whiskey barrel dining set; double barrel and over/under shotguns; Stanley oak bdrm. set; Piper Grandfather clock; trundle bed;

oak roll top desk; large appliances; 35" color TV; Oreck XL air purifier; 14' tandem axle car trailer; 1948 Willys Jeep Overland body and chassis with title; 4000 watt gas generator; Coleman 1850 gas generator; air compressor; pneumatic tools; many hand tools; chainsaws; log splitter; good quality tools on pedestals; riding mower; 2 sections scaffolding; treated timber swing set; many other items.

JERRY & BARBARA HOLTZINGER

AUCTION SPECIALISTS

MIKE FLAVIN • 316-283-8164

Full sale bill and pictures at [www.auctionspecialists.com](http://www.auctionspecialists.com)  
Email Mike at [colflav@wichita.com](mailto:colflav@wichita.com)

# Mid-America FEED YARD

Finishing First

The cattle industry is changing but here at Mid-America Feed Yard the things that have not changed is the stability, honesty and integrity in which we do business. If you are looking for a commercial feed yard whose focus is on performance and customer service, who will be here for you day after day, year after year. Call or better yet, come see for yourself why cattlemen from across the country are Finishing First at Mid-America Feed Yard.

- ★ Pens 40 to 300 head ★ S/E Nebraska
- ★ 6 Packers buying live, on the rail or value based
- ★ 5% feed financing ★ Large mounds & wide aprons
- ★ Cattle Financing ★ PVP Approved ★ Fixed corn pricing

**1-800-228-4532**

Ohiowa, Nebraska

(38 miles West of Beatrice on Hwy. 4)

Doug Karl, General Manager • Pat Bentley, Yard Manager

Dave McCoy, Director Marketing

## Laird Noller



### 2008 E-350 Cutaway

9600 GVWR Tool Body V-8, auto, AC, cruise, tilt, power equipment Group, Ltd slip



Retail \$38,760

DEMO PRICE \$30,995



WE CAN HANDLE ANY TRUCK EQUIPMENT APPLICATION!



2008 Ranger Reg Cab, 4 cyl., auto, AC

\$13,495

plus tax, fee & freight. Req. comm rebate



2008 E150 CARGO VAN V8, auto, AC, trailer tow, free comm van pkg., pwr windows, locks, mirrors, remote entry, plus free racks & bins available.

Was \$24,830 NOW \$19,995



2008 F-350 4x4

Flatbed with gooseneck, 6.4L Diesel, Torqshift auto, A-C, Ltd. slip, cruise, tilt, snow plow pkg., Tow Command System.

Was \$41,285 NOW \$29,995

Req. FMCC Finance

NEW ARRIVAL - '08 E-350 Box Van

V-8, Auto, A-C, 15' Box Length

Retail \$33,215

Price After Rebates \$25,995

\*Includes \$1,500 Demo Rebate



21st & Topeka Blvd. • TOPEKA, KANSAS

785-235-9211 • 1-800-432-2931

"We are The Cutting Edge Environmental Consulting Company for All Fleet Based Industries"

## Propane Trucks For Sale

FINANCING AVAILABLE

As Low As  
3995.00\*\*



### FORD F 700'S

- 20) 1995, 1996, 1997
- 28,500 GVW
- 429 Propane Engine
- 5 sd Transmission
- 2 sp Rear Axle
- Average Miles - 130,000



These units qualify for the Energy Act, Sec. 1113 for a 50 cent per gallon fuel credit. Other State and Local Incentives may also be available. Please call for more information. All units are shown by appointment only.

MISSOURI TERRITORY

Emily Hill

Office: 877-892-7444

Mike Batten

Cell: 816-519-9850

CONTACT:

KANSAS TERRITORY

Ashley Tebo

Office: 877-892-7444

James Sturdevant

Cell: 816-716-3186



Ideal  
Fleet Solutions, Inc.  
Tomorrow's Solutions for Today's Business.

10015 N. Ambassador Suite #104, Kansas City, MO 64153  
TOLL FREE: 877-892-7444 • Phone: 816-891-7444 • Fax: 816-891-7555



# Controlling volunteer wheat helps reduce insect and disease problems

gency, depicted in that little game: panic (oh! oh! oh!) lack of sympathy (laughed and was glad) ineffective sympathy (cried and was sad). But the sensible reaction is the one that depicts help for an injured companion. Any child identifies with the sensible frog who goes for help.

These little childhood exercises went a long way to establish priorities and basic life adjustments. They turned out pretty capable people, with coordination, ethics, and an understanding of human interactions. This form of education was very important. We can only hope that it continues in some families. And, I hope that they'll get some of the same from anthropomorphic amphibians and fuzzy pink heroes on the idiot box. See you down the road.

Now is a good time to plan for controlling volunteer wheat, said Jim Shroyer, K-State Research and Extension agronomy state leader.

"Recent problems with wheat streak mosaic, High Plains Virus, and triticum mosaic virus in much of western and parts of central Kansas remind us of the importance of controlling volunteer wheat well before this year's crop is planted," he said.

Volunteer wheat within a half-mile of a field that will be planted to wheat should be completely dead at least two weeks before wheat planting, Shroyer said. This will help control wheat curl mites, Hessian fly, greenbugs, Russian aphids, and other insect pests in the fall.

One of the most important threats from volunteer

wheat is the wheat streak mosaic virus complex, which includes the High Plains Virus and the newly discovered triticum mosaic virus, said Jeff Whitworth, K-State Research and Extension entomologist.

"In most cases, an infection of wheat streak mosaic can be traced to a nearby field of volunteer wheat, although there are other hosts, such as corn, millet, and many annual grasses, such as yellow foxtail and prairie cupgrass. Control of volunteer is the main defense against the wheat streak mosaic virus complex," he explained.

The wheat curl mite is the vector for both wheat streak mosaic, the High Plains virus, and triticum mosaic virus.

The curl mite uses the wind to carry it to new hosts

and can travel up to half a mile from volunteer wheat, Whitworth explained.

Volunteer wheat can also

increase problems with Hessian fly, he added.

"Hessian flies survive over the summer on wheat

stubble. When the adults emerge, they can infest any

Continued on page 10



## HYDRAULIC POWERED TREE SAW

- Clear Pasture • CRP Acres
- Reclaim Overgrown Areas
- Clear Fence Rows

- ★ Clear 10" Diameter Trees with Single Cut
- ★ Multiple cuts on larger trees
- ★ Blade Has 10 Replaceable Carbide Teeth
- ★ Universal Mounting For Skid Steer Loaders

- ★ Heavy Duty Greasable Bearings
- ★ Heavy Duty Motor
- ★ Requires Minimum 17 GPM Oil Flow

Affordable For Any Size Of Landowner

### LONGFORD WELDING CO.

P.O. Box 223, 106 S. Kansas Ave., Longford, Kansas 67458  
Phone: 785-388-2555

# VERY LARGE FARM AUCTION

SATURDAY, SEPTEMBER 6 — 8:30 AM

CHARLES PETE WOLTERMAN ESTATE

4488 Danbury Blacktop — DANBURY, IOWA

LOCATION: 1 mile North of Danbury on County D54

Live on line bidding - Proxibid - Starting at 12:00 Noon on Ring 2 Items - For more information or to prequalify

www.proxibid.com • 877-505-7770

Selling with 2 rings part of the day, farm machinery, collector tractors and collector machinery beginning at 12:00 Noon.

#### TRACTORS

2008 Case IH Magnum 305 MFWD, 40 hrs., 4 remotes, frt. Weights, 18.4-R46 with duals, 380/80R34 with duals, SNZ7RZ06717  
2008 Magnum 305 MFWD, 37 hrs. 4 remotes, frt. weights, 18.4R46 with duals, 380/80R34 with duals, SNZ7RZ06713  
2003 MX 255 MFWD, 1301 hrs., 4 remotes, frt. weights, 480/80R46 with duals, 380/80R34 with duals, SN-JAZ127475.

#### COMBINE

2008 Case IH 2588, 0 hrs., never been in the field, rock trap, chopper, AFX Specialty rotor, field tractor, GPS yield and moisture with mapping, 2 remote cameras, 30.5x32, SNHAJ303405  
CIH 2208 corn head with hyd. deck plates, has done 300 acres  
2003 CIH 1020, 25'; 2 Harvest Hand head trailers.

#### PLANTER

Kinze 3650 16 row 31' with bulk fill, fluted coulters and smart boxes, SN655541  
CIH 5100 22x7 drill with GS Friesen 220 bulk seed tender with weigh-tronix 615 scale and seed tractor, 2 seasons old

Wilmar 8100 sprayer, 1694 hrs, cab, air, 850 gallon SS tank, 90' boom, hyd. adjust axles, Midteck controller, 14.6R46, 1 owner  
Century 500 gallon pull between with MT 3000 controller  
1997 Duo Lift tandem axle trailer with 425/65R22.5 tires with brakes and 1600 gallon SS tank with wash tank, soap tank, chemductor and trans. pump.

#### TILLAGE EQUIPMENT

CIH RMX 340, 31' disc; CIH 4300 42' field cultivator with 3 bar harrow  
Landoll 3350, 5 shank weather-proofer; Pepin 9 section 60' drag on cart  
2 New Westfield Mo. 100-71-10"x71' augers with power swing hoppers  
Westfield 210, 31-10"x31' auger with Honda 10 hp. gas engine  
Brandt 5000 ex. Grain vac with flex pipe and attachments, like new  
4 Demco 650 gravity boxes with brakes, 425/65 R22.5 rubber, Woods BW 1800-18' batwing mower, like new  
New NI 5409 3 pt. disc mower; Cox 10' pull type box scraper  
Outback GPS system; Allis Chalmers 706 gas forklift with

new 21' free lift mast  
30' mast off 706 forklift  
Jaeger portable compressor  
2008 Ford F250 Lariat super duty 4x4, 8500 miles, 6.8L Triton V10 super cab, leather, loaded  
2004 Load Trail 22' tandem axle bumper hitch trailer with beavertail and ramps.

#### COLLECTOR TRACTORS

NOTE: All these tractors have been totally restored or are in excellent condition. All are open station.  
IH 1206, 3696 actual hrs., 1206, 1456, 1256, 560 gas 4 - 560 diesel; 2 Super MTA; 3 Super H, H; 3 Super HTA  
Large assortment of collector machinery including fast hitch blades, plows, carrier, plus loaders, corn pickers, cultivators, planters, discs, mowers, MM Model E sheller  
A large assort. of parts and attachments for IH collector tractors  
Assort. of IH collector manuals and books  
Collector toys  
A very large assort. of ship equipment  
Hand tools; shop supplies and hardware items.

For a complete listing and photos www.gehlingauction.com or call Paul Wolterman, 712-259-4454, Cell 712-883-2019 or Gehling Auction Co. 507-765-2131

Sale conducted by: GEHLING AUCTION, INC.

Box 250, Preston, Minnesota 55965

AUCTIONEERS: Denny Brusse, 23-45, Ron Gehling 23-46, Dave Holstad, Roger Bullerman, Matt Gehling 23-94

CLERK: Gehling Auction Co., Inc. • www.gehlingauction.com

e-mail: gehling@gehlingauction.com

GLEANER R75 ROTARY COMBINE

A PROVEN TRADITION THAT ALWAYS GETS BETTER.

The AGCO GLEANER Model R75 rotary combine, with 350 horsepower and a grain tank capacity of 330 bushels, is designed to continue the tradition of GLEANER innovation:

- Factory-installed CDF™ (Controlled Dynamic Flow) rotor for better grain quality, less horsepower in today's tough crop conditions
- New four-strand feeder chain for better crop flow
- Console II combine control & Fieldstar II yield monitoring
- GLEANER-exclusive distribution augers & accelerator rolls make R5 Series GLEANER combines the least slope sensitive combines on the market today.

Efficiency. Quality. Reliability. Performance. To find out why thousands of farmers remain loyal - generation after generation - stop in now to see today's generation of AGCO GLEANER.

AGCO GLEANER FIELDSTAR II

EMPORIA  
Schaefer Equipment  
620-342-3172

KALVESTA  
Kalvesta Implement  
620-855-3567

HILLSBORO  
Ag Power Inc.  
620-947-3182

LAWRENCE  
Shuck Implement  
800-654-5191

**Briggs** 800-684-4848  
DODGE 785-266-8858  
www.briggsauto.com  
3137 South Kansas Ave., Topeka, Kansas

2007 DODGE RAM 2500 4x4  
NADA Retail: ~~\$32,325~~  
Briggs Price: **\$20,900**  
★ One Owner  
★ We Sold It New!  
★ Hail of a Buy!

2006 DODGE RAM 2500  
★ 4x4 ★ 1 Owner ★ Local Trade  
NADA Retail: ~~\$28,700~~  
Briggs Price: **\$18,900**

2006 FORD F-350  
★ Nice Truck ★ Ready to Work!  
~~\$19,900~~ **\$17,900**

2007 DODGE RAM 2500  
★ Great Pulling Truck ★ Low Miles  
★ None Nicer!  
NADA Retail: ~~\$31,200~~  
Briggs Price: **\$20,900**

1993 DODGE RAM  
★ Cold A/C ★ 4x4 ★ Great Tires ★ Local Trade  
**\$4,900**

As gas prices skyrocket to record highs, truck prices are plummeting to record lows. You've got big jobs to do, and giving up your truck for a compact car just isn't an option. But we've got good news. **There has never been a better time to buy a new or pre-owned truck!**

For the next 30 to 90 days, the truck market will be at an **all-time low** because the supply is so much greater than the demand. Auto manufacturers are already working to resolve this unsteady market by drastically cutting production of new trucks. In fact, Toyota, Ford, Chevy, Nissan and Dodge are currently reducing their new truck production to help match the supply to demand.

But what does this mean for you? You'll see unprecedented savings on new and pre-owned trucks at Briggs Dodge. The market is flooded with trucks and we've got to move them off our lot. It's not a gimmick, it's just reality. We must reduce our truck inventory to meet the demands of this radically shifting market.

Now is the time to take advantage of record savings on a new or pre-owned truck. **Experts are predicting that the truck market will never again be this low!** But you'll have to act fast. Once the decrease in truck production balances out the market, prices will return to normal and these extraordinary savings will be only a memory.

Northeast Kansas #1 Volume  
**DODGE DEALER!**  
MONDAY-TUESDAY-THURSDAY: 8:30 AM-8 PM • WEDNESDAY-FRIDAY-SATURDAY: 8:30 AM-6 PM



# Steps to curb wheat diseases

Continued from page 9

volunteer wheat that may be present, which will keep the Hessian fly population alive and going through the upcoming crop season. In years with a wet summer and/or a long open fall, there can be two broods of Hessian fly in the fall; and this is even more likely where volunteer is allowed to grow and become infested early," the entomologist said.

In addition, volunteer wheat is a host of greenbugs and bird-cherry oat aphids which are the vectors for barley yellow dwarf, Whitworth said. Russian wheat aphids may also live over the summer on volunteer wheat.

"While this insect has wings and can be windborne for hundreds of miles, the vast majority of fall infestations in Kansas appear to originate from nearby infested volunteer," he said.

A number of other insects are also associated with the presence of volunteer wheat, Whitworth said. An example in western Kansas is the Banks grass mite.

"During some years, infestations become established during late summer and early fall on volunteer wheat. Later, as the quality of the volunteer deteriorates, mites move from the volunteer into adjacent fields of planted wheat or other small grains. Occasionally mites will survive the winter and continue to spread into the

planted wheat following greenup in the spring," he said.

A concern in eastern Kansas is the chinch bug. Occasionally, adult bugs will fly from maturing sorghum fields in late summer to nearby fields where volunteer wheat is growing.

"Where infested volunteer is allowed to grow right up until seedbed preparation just prior to planting, early planted continuous wheat is likely to become infested. Similarly, volunteer that is

allowed to grow through the fall and into the following spring may also serve as an attractive chinch bug host," Whitworth said.

Of course, much depends on the uniformity of the remaining stand and the weather for the rest of the growing season," he added.

More information is available in the K-State publication MF-1004, "Be A Good Neighbor: Control Your Volunteer Wheat," at: [www.oznet.ksu.edu/library/crps12/MF1004.pdf/](http://www.oznet.ksu.edu/library/crps12/MF1004.pdf/).

**4 Minutes to see the Cleary Difference!**

visit [clearybuilding.com](http://clearybuilding.com)

Click on Videos to watch **Shamrock Pride** and see the Cleary difference!

Official Builder of **Lambeau Field**

Pre-Engineered structures for:

• Commercial • Residential • Equine  
• Farm • Suburban • Metal Roofing

Free On-Site Consultations!

**24'x36'x10'** starting at **\$9,895**  
**30'x45'x10'** starting at **\$11,995**  
**42'x63'x13'** starting at **\$20,745**  
**60'x81'x14'** starting at **\$33,295**

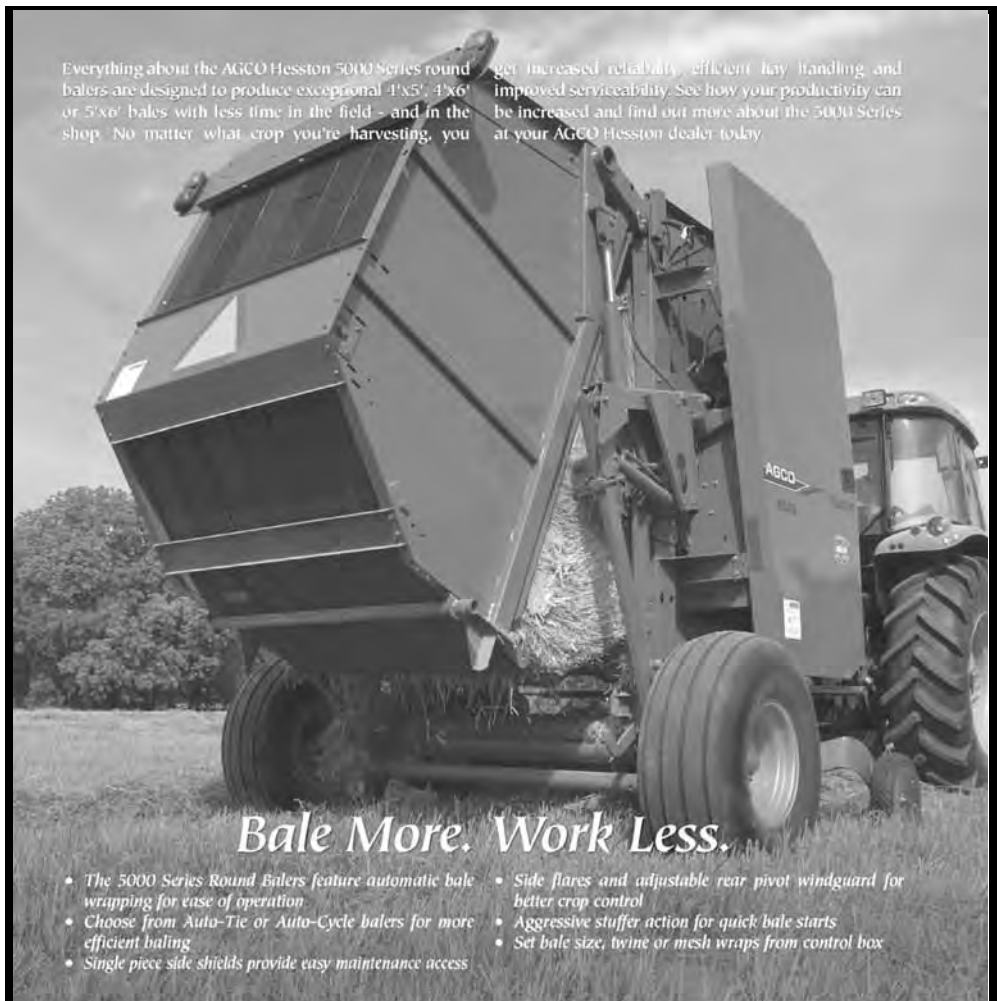
Crew travel required over 50 miles. Local building code modifications extra. Sale buildings pictured are not priced in ad and are built on your level site. Price subject to change without notice.

GARDEN CITY, KS, ..... (620) 271-0359  
McPHERSON, KS, ..... (620) 245-0100  
OTTAWA, KS, ..... (785) 242-2885  
WELLINGTON, KS, ..... (620) 326-2626  
CORTLAND, NE, ..... (402) 798-2111

**CLEARY BUILDING CORP.**  
Serving our Clients since 1978

**1-800-373-5550**

Everything about the AGCO Hesston 5000 Series round balers are designed to produce exceptional 4'x5', 4'x6' or 5'x6' bales with less time in the field - and in the shop. No matter what crop you're harvesting, you get increased reliability, efficient hay handling and improved serviceability. See how your productivity can be increased and find out more about the 5000 Series at your AGCO Hesston dealer today.



**Bale More. Work Less.**

- The 5000 Series Round Balers feature automatic bale wrapping for ease of operation
- Choose from Auto-Tie or Auto-Cycle balers for more efficient baling
- Single piece side shields provide easy maintenance access
- Side flares and adjustable rear pivot windguard for better crop control
- Aggressive stuffer action for quick bale starts
- Set bale size, twine or mesh wraps from control box

**HESSTON AGCO**

<p><b>SUPERIOR, NEB.</b> Superior Implement 402-879-4723</p> <p><b>AUBURN</b> Garrett Ranch Supply 785-256-2372</p> <p><b>LAWRENCE</b> Shuck Implement 785-843-8093</p>	<p><b>LINCOLN</b> Lincoln Farm Supply 785-524-4421</p> <p><b>KALVESTA</b> Kalvesta Implement 620-855-3567</p> <p><b>MINNEAPOLIS</b> Lott Implement 785-392-3110</p>	<p><b>HILLSBORO</b> Ag Power Inc. 620-947-3182</p> <p><b>EMPORIA</b> Schaefer Equipment 620-342-3172</p>	
---	---	--	--

875-539-7558  
or online at:  
[grassandgrain.com](http://grassandgrain.com)

# SUBSCRIBE TO GRASS & GRAIN

## ANTIQUe AUCTION

**SATURDAY, AUGUST 30 — 10:00 AM**

Auction will be held in Kenwood Hall at the Saline Co. Fairgrounds in **SALINA, KANSAS**

**GLASS**  
Van Briggie lamp; Royal Doulton Toby & Patchwork Quilt; 2 pickle castors; Delft sugar; McCoy planter; Dryden vase; Spode bowls & plates; Vaseline toothpick; Fenton candy box; Belleek heart dish & bell; 38 pcs. Spode Christmas china; Holland vase; Iris & Herringbone candleholders; Amethyst bowl, plate, vase; Hall tea pot; Lefton tea pot; Wanetta jar; Fostoria pitcher; Fenton cruet; glass & porcelain shoe collection; German vases; perfume bottles; Westmoreland rabbit dish; Fenton cranberry vase; several Fenton Santa Claus, bowls & vases; 50's glasses; Harlequin dinnerware; Fire King casserole & batter bowl; pink depression glass; Pharme-seutical measure; Remember the Maine candy; Chez vase; Murano clown; Fire King; Iris Herringbone; large assortment of other glass.

**COLLECTIBLES**  
Indian (1930's Papogo basket, 2 pc pottery, story teller, 2 stones); Little Orphan Annie stove; blue & white sponge pitcher; crock beater jar; Buddy L 20's truck; 1918 DeLaval calendar; porcelain signs inc. (Goodyear, Frigidaire); tin signs (4' Fishtail Coke, JD, Archer, Camel, Montclair, Goodyear, Remington tire); Skelly oil cans; Bud light neon clock; Schlitz & LA beer plastic signs; Miller pool light; Pepsi plastic bottle cap sign; 7UP thermometer; Fanta tray; paper advertising; Davy Crockett outfit box; JD manuals; botanical prints; 1939 Worlds Fair peanut set; pictures; photo albums; child's hankies; beaded purses; mesh purse; silhouette pictures; assortment jewelry (Weiss, cameo, bakelite pin, opal ring, pearl ring, 10 sterling pieces, beads, pins); linens; Salina banks; K-State bank; Coffee tins (Red & White, Iris, Dinner

Prty, Family, Manhattan, Equator); spice tins (Ben-Hur, Forbes, Standby, Nebia, T&T, Tones, Millar, Solitaire); powder tins; Elvis items; 4 Santa's; milk bottles; brass umbrella holder; pin cushions; spice sets; hankies; quilts; thimbles; eye glasses; straight razors; sterling vase & basket; DeKalb & Camel thermometer; viewer & cards; military medals & pillow cases; cook books; 1928 golf tournament plate; Longaberger basket; paper machie Jack o Lantern; magazines; books; 50's, 60's & 70's car showroom brochures; 1940's Ford spotlight; KC Royals doll; cigar box collection; Dyminate can; marbles; valentines; quilts; dollies; Tudor plate silverware; fiber duck decoys; Coke cribbage; dresser set; Johnson outboard motor; Coleman stoves; wood plane; lantern; stamps; 3 walnut 60's chairs; walnut drop leaf table & chairs; assortment of other collectibles.

**Note: We have combined several collections for this auction to make a nice auction. This will be a large auction with a large collection of glass and collectables. Check our web site at [www.thummelauction.com](http://www.thummelauction.com) for pictures.**

Auction Conducted By  
**Thummel Auction**  
Beloit, Kansas • 785-738-5933

## ANTIQUe AUCTION

**SUNDAY, AUGUST 31 — 10:00 AM**

Auction will be held in Kenwood Hall at the Saline Co. Fairgrounds in **SALINA, KANSAS**

**COLLECTIBLES & GUNS**  
Hitler Nazi glass slide set 50 pcs (Hitler, Braun, Dr Ley, Gobbels, Hess, Himmler few cracked); Guns inc.: (Remington 12 ga model 1100, Remington Wingmaster 870 mag 12 ga, Remington Junior Special model 521 T 22, H & R Deluxe Topper model 198 20 ga, Diamond Arms 410, Springfield Savage model 67F 20 ga pump; farm manuals (JD, MM, MH, MF, AC, IHC, Ford, Oliver, Case, Coop, Cockshutt); comic books; magazines (car, kids, 1940 Alaska, Swift Meat, Train, Fisherman, Cock Fighting); Lee Tire brochures; calendars (Winchester, Deere, AC, religious); Army manuals; vintage hardware & gun catalogs; Parker ink bottles w/boxes; Red Man hand fan; Quirt bottle topper; RI railroad towels; Phillips paper; Salina Indian pit postcards; hats; Sunkist juice extractor; Army pillow covers; Military hats, patches, uniforms, officers footlocker, mess kit, marked 1943 lg signal flag; horsefly blanket; 400 mechanical pencils; maps; sports cards; programs; tickets; Chrysler gold tool set; vacation pennants; John Wayne videos; KU frat paddles; vintage Ford bulletin; Noblet clarinet; Purina mink tray; Coke hat; Bulldog lighter (damaged); Kenton salesman sample stove (not complete); waffle irons; 6i Kay Woodie Yello Bolo pipe display; flatware some sterling; clock keys; Tammy doll case w/clothes; Tina Cassini doll; Barbie set; 100 pc. turquoise jewelry; early K state glass lantern slides; model T booklets; early car brochures; Nes-

bits soda thermometer w/box; 1964 IHC catalogue; 1920's Phillips 66 lube chaps; GWTW lamp; large slag glass lamp; brass hunting scene lamp; granite mixing bowl set; Indian blanket; wall clocks (Bulova, Quaker State, Rexall, 7 UP, Pepsi); porcelain flange Telephone sign; Panhandle Eastern porcelain sign; advertising thermometers; large oak mission wall clock; Murray train; 150 spark plugs w/boxes & tin boxes; 20 pocket mirrors & stones; advertising tape measures & sewing kits; several pocket & wrist watches & chains; padlocks inc (six lever, CB & Q railroad); 3 Nazi pins; straight razors (Keen Kutter Royal); 20 pocket knives; sword & scabbard; JD yellow emblem; car emblems; Marbles & Scout match safes; railroad decks cards; Lone Ranger pedometer; Jack Armstrong hike-o-meter; beaded Indian necklace (rough); pin-backs; vintage jewelry; Winchester (3 leg boy roller skates, watch fob, razor strop, screw drivers, kitchen scales); toy promos (58 Edsel, 58 Chrysler, 60 Ford, IHC truck, IH pickup IH semi); Marx tin airplane parts; several toy trucks; toy boat; other toys; visible gas pump ring/base for glass; KC Royals series tickets; Keen Kutter (apple peeler, level, square, hammer, yardstick, tools); yardsticks (Lee hwd, GMC, Chevy, Dodge, Buick, Caterpillar, JD, Plymouth, M Deering, AC, Cub Cadet, Ford tractor, Massey/Wallis); Coleman lighting system box & tank; Tarzan & Jane Grey books; Crosley car radio; Victorian photo al-

bums; telephones wall & rotary; brass blade fans; Emerson Silver Swan deco fan; 60 Kennedy/Oswald newspapers; large collection postcards & books; slip shade fixture; several glass shades & fixtures; large watch parts cabinet; 100's parts & crystals; 2 small watch cabinets; jadeite 3 head malt mixer; 1943-1970 sports magazines; Victorian trade cards; marbles; Bitters bottles; Rever Ware salesman sample set; console radios; other radios; 1920 6' Pharis Tire banner; several Marx character toys in boxes; Hesston rodeo lithographs; kitchen clocks; baseball bats; assortment other collectibles.

**POTTERY & GLASS**  
Van Briggie vase marked Hutchinson 1922 other pieces; cranberry lamp; Niloak/Evans Mission swirl vase; FT Hays pieces; Indian pots; Miltonvale crescent moon vase; Goofus cameo powder jar; Nemandju pieces; opalescent goofus; Eames era lamps; 100 pcs Fire King game bird, all 4 birds, plates, saucers, mugs, glasses, both bowls; 8 Evening in Paris bottles; salt & pepper shakers; Fenton carnival butterfly bonbon & other; early German Deco perfume; Texasware plates; Roseville pieces; Dryden black onyx set & other pieces; Weller pieces; Candelwick; Fiesta salt & pepper; Hull pieces; Moundridge Creamery glass; Nippon pieces; Art Glass vase; 25 pcs Russell Wright; 35 pcs Franciscan Autumn Leaf; California pottery; 12 place set Franciscan Desert Rose.

**Note: This is a large auction. It is a private collection. Check our web site at [www.thummelauction.com](http://www.thummelauction.com) for pictures.**

Auction Conducted By  
**Thummel Auction**  
Beloit, Kansas • 785-738-5933



# MICHAEL WEGENER IMPLEMENT, INC.

# CONSIGNMENT AUCTION

Thursday, August 28, 2008 - 8:30 AM CST

Sale Location: Cornlea, NE - Junction Hwy 81 & 91 -  
5 Miles west on 91, South to Cornlea

BID LIVE ONLINE - Register for this event on [www.proxibid.com/michaelwegener](http://www.proxibid.com/michaelwegener)

All equipment will be mixed, be on time.

NOTE: MUST BE REMOVED WITHIN 30 DAYS

## TRACTORS:

'07 JD 8430 MFD, 50" rubber, 4-hyd., warranty  
2011, 350 hrs.  
JD 4455 MFD, PS, 4600 hrs.  
JD 4455 MFD, PS, w/JD 840 loader & grapple,  
7700 hrs.  
JD 9300, 4x4, 24-speed, PTO  
JD 7520, 4x4, 3pt PTO  
JD 6030, 3-pt PTO, new overhaul, 5300 hrs.  
'88 JD 4850 MFD, 1000 hrs. on rebuilt engine  
JD 4955 MFD, duals, wts  
'82 JD 4040 Quad w/JB 870 loader  
'67 JD 4020 PS  
JD 4020 Industrial Wheatland, diesel  
JD 4320, 5600 hrs., 1-owner  
'75 JD 4230 Quad, 1-owner  
JD 4620  
JD 8850, 3pt, duals, clutch out  
JD 4010 Wheatland, diesel, w/Allied loader  
JD 4630, 4post, synchro  
JD 4840 JD 4955 MFD  
2 - JD 5010  
JD 730, diesel, wide frnt, 3pt  
JD 4020 LP JD 3010, diesel  
'70 JD 3020 Synchro  
2 - JD 4650 MFD  
'70 JD 4020 w/cab  
JD 4240 PS  
Massey Ferguson 2640 MFD, w/Leon dozer blade  
INT 5288 w/duals, 7500 hrs.  
CIH 7220 MFD, 5100 hrs.  
CIH 7120 MFD CIH 7120  
CIH MX120, MFD CIH MX100, MFD  
CIH MXU115, MFD  
CIH 9130 MFD, PS, 3pt PTO  
IHC 1066  
IHC 574 Utility, gas, new paint, clutch, overhaul  
IHC 1066 INT 4366 w/dozer  
IHC 3788, 2+2 IHC 806  
Case 2594 IHC 1086  
INT 1066 black stripe  
CIH 245, diesel, 3pt PTO, 220 hrs.  
MM G706, MFD, w/dozer  
INT 240 INT 140  
INT 656, 2pt, narrow frnt, diesel  
INT 1456, wide frnt, 3pt  
2 - MM UTS, w/PTO  
Oliver 60 Crawler MM UTU  
AC on steel, sn#54598  
Farmall 450, w/F-10 loader  
JD A Oliver 99  
INT M w/American #8 grader attachment  
Farmall H  
MF 444 diesel MF 333 gas

## TRUCKS & TRAILERS:

'99 Volvo, 10-speed, 500 hp  
'92 Volvo 9-speed, Detroit  
'92 Volvo 10-speed, Detroit  
'92 Volvo  
'99 INT 9400  
'04 Timpte 42' grain trailer, air ride  
'06 Trancraft 102 alum. Deck, 53'  
'94 Benson 48' flat bed, new rubber  
'05 Wilson 43'x72" grain trailer, ag hoppers, air ride  
'76 Chevy C65 w/air tag  
'78 Chevy C60 w/8-ton dry fert. Box  
Trail Long 6x20 livestock trailer 5th wheel  
'73 Cornhusker 800 grain trailer  
Dodge 500 single axle, 16' box  
'73 INT truck w/BJM feed box  
GMC mail truck  
'74 Peterbuilt cabover, 350 Cummins, 13-speed  
'81 Timpte 42' grain trailer  
'99 GMC 2500 4x4 diesel pickup  
Air tag axle for straight truck  
'95 Fruehauf 48'x102 dry van  
'94 Timpte 42'x78" grain trailer, air ride

## COMBINES:

'05 JD 9760STS, duals, contour, 850/1100 hrs.  
'04 JD 9660STS, duals, contour, 850/1200 hrs.  
'04 JD 9660STS, duals, 1150/1550 hrs.  
'03 JD 9750STS, duals, contour, 1500/2200 hrs.  
'01 JD 9750STS, duals, 2300/3200 hrs.  
'01 CIH 2388, duals, chopper, 1950/2350 hrs.  
'99 CIH 2388, duals, chopper, contour,  
2100/3100 hrs.  
'99 JD 9510, 30.5 rubber, 1600/2000 hrs.  
'89 JD 9500, 3000/4000 hrs.  
'87 JD 6620 Titan II, 2400 hrs.  
'76 JD 4400, 1800 hrs.  
'76 JD 4400 diesel, 2400 hrs.  
'77 JD 6600 hydro '76 JD 6600 hydro  
'80 JD 6620 hydro '84 JD 7720 hydro  
'84 JD 7720  
'88 JD 7720 Titan II hydro  
2 - '85 JD 6620 Titan II hydro  
'77 JD 4400 diesel '75 JD 4400  
3 - '90 JD 9600  
'91 CIH 1660 '88 CIH 1660  
'87 CIH 1660 '79 CIH 1440  
'80 CIH 1460  
CIH 2188, duals, chopper, 3100/2200 hrs.  
CIH 2188, duals, chopper  
CIH 1680 NH TR75  
NH TR70 2 - NH TR85  
Gleaner M3 hydro MF 760 hydro  
MF 510 MF 550  
'85 MF 860, 3100 hrs.  
'79 INT 1460 '80 INT 1440

## CORN & GRAIN HEADS:

JD 893, 853, 843, 653, 643, 444, 443, 454, 454A  
2 - JD 644 JD 546 GVL  
JD 213, 215, 216, 220, 920, 924, 925, 930 Flex  
JD 930F w/air reel  
JD 215, 216, 218, 930 Rigid  
INT 863, 964  
CIH 883, 944, 1044, 1064, 1084, 1063, 1083, 2208-30'  
CIH 1020-17.5', 20', 25', 30'  
CIH 810-13'  
Gleaner LM 15' Gleaner R316  
Gleaner LM 315  
Gleaner R - 30' Rigid Gleaner LM 6RW  
Gleaner 330 for F2  
MF 1859, 13-15 MF 1163  
2 - MF 9120 Flex INT 820-15' Flex  
NH 973-15' Flex NH 962-6RN  
NH 962-4RW NH 974-6RN

## CHOPPERS:

JD 5460 4x4, w/4RN, 3RN, 7.5' pickup  
2 - Field Queen 7600 w/heads  
JD 35, 38, 3800  
NH 770, 880, 892 w/heads  
Richardson 1400-14' dump wagon, shedded  
2 - Balzer silage wagons

## LOADERS & CONSTRUCTION:

2 - JD 760 Tractor Scrapers  
Cat 920 Payloader  
JD 544B Payloader  
Bobcat 642 Skidloader  
Case 1845C Skid loader  
Case W14 Payloader  
Ditch Witch R40 Trencher  
Condor 66' Qubic Main Lift  
INT T103 Trencher  
Navy Forklift  
MF 470 Wheel loader  
Woods 3pt backhoe

## PLANTERS & DRILLS:

'04 CIH 1200-16-31R bulk fill  
'03 JD 455-25' drill, 7.5 spacing  
'96 JD 455-25' drill, 7.5 spacing  
White 6180-16RN, w/fert.  
'00 JD 1770-16R, ff, poly boxes  
JD 1770-12RN, liquid fert.  
JD 7100-6RW  
Kinze 16R20 bean planter  
JD 7000-4RN  
Vanbrant 7x20  
JD 8300-10x15, grass seed  
JD 7100-8RW, lift assist  
White 6432-12RN, folding

## TILLAGE:

INT 490-24' disk JD 630-24' disk  
CIH 14, 7-shank  
JD 955 4-shank 3pt ripper  
INT 475-18' disk INT 501-14' disk  
M&W 117, 7-shank ripper  
JD 235-24' disk  
Yetter 7-shank chisel, 3pt  
JD 230-21' disk JD BWA 14'  
Krause 1901-18' disk  
JD 310

## HAY EQUIPMENT:

JD 336 baler NH 316 baler, twine  
CIH 8465 baler  
Farmhand 8-bale pack  
NH 315 baler NI baler  
JD 100 baler, 3x4x8  
Hesston 12 wheel rake  
NH 276 baler, t  
NH 144-166 hay fluffer INT 3650 baler  
JD 336 baler, w  
JD 895-16' auger head  
CIH 8465 baler  
NH 285 sq. baler, t  
Hesston 8580 baler  
2 - CIH 1300-9' mower  
JD 1380 swather  
Plastic Twine 20,000'  
3pt hyd. bale spear

## MISCELLANEOUS:

Blue Jet 33' Anhyd. Rig, 3pt  
Schuler 5x12 feed wagon  
Heniker 7000 air seeder 6R  
JD 7000 hiboy  
Bessler 24' rolling stalk cutter  
Dohrman 500 bu. grain cart  
JD 746 loader, grapple fork, like new  
Friesen 220 seed tender  
Woods 15' batwing shredder  
2 - Rhino 15' batwing shredder  
Land Pride 6015-15' shredder  
JD 1518 batwing shredder  
Buffalo 8R stalk shredder  
Hutch Master C-3000 grain cleaner  
Farmhand 815 grinder  
Buffalo 8RW cultv.  
Conveyair 4005 grain vac  
JD 885-4RW cultv.  
FH 430 feed wagon w/scale, like new  
Neco grain cleaner  
NH 795 spreader  
NH 355 grinder/mixer w/scale, like new  
Gehl 135 grinder  
Knight 3575 wagon  
Gehl 95 grinder  
Bearcat 14' packer

FH silage blower  
Ford utility loader  
Gehl flail shredder  
McCormick manure spreader, like new  
Landell 8' snow blower  
Soilmover 3yd scraper  
Cat 3208 engine  
3 - Wind Power 45/25, 12/20, 45/25 generators  
Sundenga 8x67' auger  
Federal 8x53' auger  
Gehl 120 grinder  
JD 48 loader  
Sun Master 8'-12 flail shredder, like new  
FH 1140 loader w/grapple  
INT 595 tandem spreader  
JD 85-12R30 cultv.  
JD 534-10' dozer blade  
Degleman 10' dozer blade  
Leon 9' dozer blade  
3pt sprayer  
Berkley PTO pump  
Peck 12x72 auger w/swing hopper  
Peck 8x30 auger  
Bill 528 grain cart  
UFT 500 grain cart  
Mill Creek Manure Spreader  
Balzer manure spreader  
Brent 450 center dump wagon  
5' rear 3pt tiller  
5' 3pt spring tooth  
5' 3pt blade  
Aviation fan, 18x3hp, 3phase  
Hyd. squeeze chute  
Chevy 454 Irrig. Motor  
Cummins 855 Irrig. Motor  
2 - Schaben 2650 center dump fert. tanks  
5 - Antique oil barrels w/pumps  
100 - Railroad ties  
Large amount of misc. iron

## HARRY ASCHE:

Farmall H JD B  
JD 4440 PS, 4300 hrs. 1-owner  
JD 7520, 3pt PTO, 5600 hrs.  
JD 4030 w/JD 48 loader, 3500 hrs., 1-owner  
JD 6620 JD 546 Cornhead  
JD 220  
White 5100-8RW planter w/splitter  
JD 534 dozer blade JD 210 disk  
Krause 4100-25' field cultv.  
Krause 25' disk  
2 - JD 5-btm plow  
MF sickle mower  
JD running gear  
Buffalo 4R Planter  
3yd Soil Mover scraper  
Fert. spreader JD 4btm plow  
White 378 8RW cultv. JD 1600 chisel  
Krause disk  
Buffalo 4R cultv.  
JD 727 shredder JD 494 planter  
JD dummy head JD grain drill  
Several barge boxes  
JD 734 sprayer JD 450 mower  
JD 350 elevator  
2 - Chevy grain trucks  
JD 454 row crop head  
3pt blade  
several misc. items

**PRE-APPROVED FINANCING or LEASING  
AVAILABLE THRU AG-DIRECT,  
CALL LORI AT 402-923-1160 FOR  
INTEREST RATES & INFORMATION.**

**MUCH MORE TO ARRIVE BY SALE DAY!**

**OWNERS NOTES:** We're offering a great line of quality late and early model equipment. This is a partial listing as we are expecting a lot more machinery by sale time. Items listed are subject to prior sales, as we buy, sell and trade daily. If you don't see it, give us call. We provide good loading and unloading facilities with trucking available to and from sale including the entire US, Canada and Mexico. Lunch on Grounds: St. Francis Home & School.

**TERMS & CONDITIONS:** All potential buyers must register at the office. All items are sold "as-is" with all faults and defects. Must be paid for in full on sale day with cash, cashier check, or personal or company check, if accompanied with a bank reference letter. NO DRAFTS ACCEPTED. Buyer responsible from time of sale and will not hold MWI responsible for any liability from theft, accidents or fire. Items purchased and not picked up after 60 days will be retagged to buyer and sold. Unknown or first time consignors must furnish MWI a bank reference letter prior to tagging-in merchandise. Items must be free and clear of any encumbrances of any and all types. MWI will not price protect your merchandise in any fashion, regardless. All sales must come through MWI office. Announcements made DAY OF SALE supercede all printed material. MWI nor the Auctioneers will not be responsible for hours or misrepresentation of any kind on all equipment.

**For More Information, Call: MICHAEL WEGENER IMPLEMENT, INC.**

Office: 402-923-1160

CORNLEA, NEBRASKA

Mobile: 402-920-0168

Website: [www.wegenerimplement.com](http://www.wegenerimplement.com) • E-mail: [wegenerimplement@gmail.com](mailto:wegenerimplement@gmail.com)





Hey Neighbor



# For The Love Of Horses

By Frank J. Buchman

## Artificial Legs Can Put Horses Back Into Commission

Horses with artificial legs often adapt to the disability better than their caretakers.

"A horse with a prosthesis requires considerable care from its owner, but the patient itself can usually adjust more readily than one might expect," according to Dr. Barrie Grant, a board-certified surgeon formerly at San Luis Rey Equine Hospital in Bonsall, Calif.

Because of the strict management required for a horse fitted with an artificial leg, owners sometimes opt not to have the procedure administered.

"Although it is costly to go through the process of leg amputation, fitting a prosthesis and getting a horse used to it, the required care from then on is commonly the deterring factor in owners deciding not to have the procedure," explained Grant, now retired, but in demand worldwide for his knowledge about equine prosthetics.

An initial thought might be that horses would have a difficult time adjusting to loss of limb and replacement with an artificial one, but this is not always the case. Most horses stand up with their new prosthesis shortly after attachment.

"Often, the biggest problem," Grant said, "is getting the horse to lie down."

"It takes time, but most horses eventually learn to do that. Those that don't are the problem," he continued. "The good leg must have rest, and if the horse does not lie down, there is undue stress, and this can cause permanent damage to the good leg."

One might also think that injured race horses, and other vigorous performance horses, would not be candidates for a prosthesis, because they would be so hyper and energetic. That is not the case, either.

"These are smart horses, or they wouldn't be winners. In most cases, they readily adapt to a prosthesis," Grant declared.



A hind leg on this buckskin mare was amputated and replaced with a prosthesis by Dr. Ted Vlahos at the Sheridan Equine Hospital in Sheridan, Wyo. Performing many leg amputations on horses over the past decade, Vlahos said the results are impressive, and the horses are remarkably comfortable with the life-saving procedure.

**From Death To Life**  
While prosthetics are not used in great numbers on horses, it is not an uncommon

treatment. Grant has worked with nearly 50 amputations and prosthesis cases, including some of the most expensive Thoroughbreds around the world. Before the 1970s, horses with severe leg injuries



Wick Buildings is well known for our wide range of design options, from standard garages to unique structures designed to your specific needs.

### D.J. CARPENTER BUILDING SYSTEMS



405 Walter Road - Mazomanie, WI 53560  
1-800-356-9682 - www.WickBuildings.com

709 B PECAN CIRCLE  
MANHATTAN, KS 66502  
**(785) 537-9789**

408 CIRCLE ROAD  
SILVER LAKE, KS 66539  
**(785) 582-0530**

www.carpenterbuildings.com

### Bird Hunters!

1200 Acre Shooting Preserve  
Just 8 miles Southwest of  
Junction City Kansas!

Season begins September 1

Full and Half Day Fully, Semi  
and Non-Guided Hunts for  
Pheasant and Quail. Rates  
Starting at \$65 a day!  
Tune up your dogs for the  
Upcoming Season!

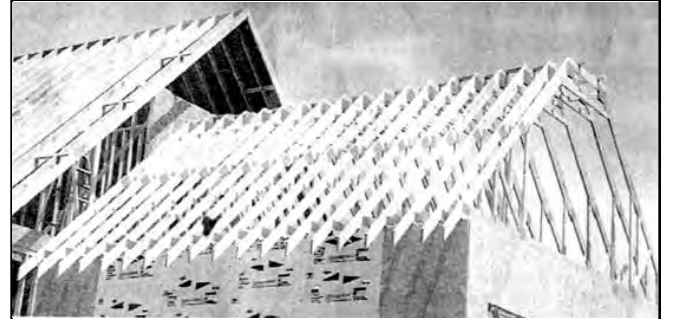
10% Military Discount!

### Tallgrass Lodge.

Pheasant - Quail - Dove - Whitetail  
Waterfowl - Turkey - Flamingo

4311 W Lyon Creek Rd  
Junction City, Kansas  
1-800-241-9122  
www.tallgrasslodge.com

## Precision Truss



Tired of Paying Big City Prices  
For Your House and Floor Trusses!  
Give us a Call for a Free Quote!

### ROOF & FLOOR TRUSSES

Office 785-562-5615 • Fax 785-562-5693

Located 3 miles West of Marysville, Kan.  
LICENSED ENGINEERS • TRAINED PROFESSIONALS

## SEE THE LATEST IN AG FROM MARTIN FARM POWER.



From the new line of Challenger Tractors to the legendary service you've come to expect, Martin Farm Power is equipped to meet and exceed all of your farming needs. Like you, we recognize the importance of quality equipment and reliable service and we're ready to demonstrate our commitment to you.



www.martinfarmpower.com

Topeka, Kansas  
785-267-8137

Chanute, Kansas  
620-431-4120

Concordia, Kansas  
785-243-1960

Colby, Kansas  
785-462-3913

# Introducing TIFFANY

CATTLE CO., INC

Formerly Black Diamond Feeders

With a 15,000 head capacity, Tiffany Cattle Company is large enough to have economics of scale but small enough to provide personal attention. Animal health crews check your pens daily for sick or injured animals. Pen sizes range from 50 to 200 head. Accurate record keeping and readily available information are important at Tiffany Cattle Company. A computerized summary of feed, cattle processing, veterinary services and other costs are easily accessible on each pen of cattle.

### PRODUCTION SERVICES

**Objective is simply: Least Cost Per Pound of Gain!**

Ration formulation and cost analysis, health program designed and maintained by veterinarian, special pens and attention to sick animals, feed financing, and cattle purchasing available.

### MARKETING SERVICES

Marketing finished cattle is top priority at Tiffany Cattle Company. You have the option of selling on the cash market, forward contracting or grid pricing through US Premium Beef.

- Risk management using futures or options
- All marketing decisions discussed with and approved by cattle owner
- Futures transactions handled and financed by Tiffany Cattle Company for qualified customers

- Locked commodity prices
- Complete profit/loss statement for each pen
- USPB delivery rights available for Tiffany Cattle Company customers
- Herd improvement via carcass data free of charge
- Reward for your efforts in producing a quality product by selling your cattle on an industry competitive grid



TIFFANY  
CATTLE CO., INC

A Complete Cattle Feeding  
and Marketing Service

1333 S. 2500 Road  
Herington, KS 67449  
Shawn Tiffany, Owner/Manager:  
785-229-2902  
Shane Tiffany, Owner/Manager:  
785-466-6529  
Doug Laue, Co-Owner  
Office: 785-258-3721 •  
tiffanycaco@fhrd.net



were routinely destroyed. Owners did not want the animals to suffer, and the horses could no longer lead useful lives. The first known prosthetic device for a horse amputee was developed by Dr. Lavon Koeger at Washington State.

Grant was his student, became interested in the practice and continued pioneering efforts. With Grant as head of the equine division at WSU's veterinary clinic, it became the international center of research on equine amputation and prostheses. Those horses that were formerly being put down are now being saved with artificial legs and lead useful, contented lives.

Several wire service stories in recent weeks have reported successful cases of horses being fitted with artificial legs in this country. A grey speckled pony called Molly in New Orleans was attacked by a pit bull terrier. Her gnawed right front leg became infected, and she almost died.

However, surgeon Dr. Rustin Moore at Louisiana State University saw a unique disposition in the pony, agreed to remove the damaged limb, and an artificial leg was built to fit her.

"This was the right pony, and the right owner," Moore insisted. "She's tough as nails, but sweet, willing to cope with pain and under-

stood how to care for herself.

"As important," Moore continued, "she has a truly committed and compliant owner who is dedicated to providing the daily care required over her lifetime." Molly is being taken to shelters, hospitals and nursing homes serving as an inspiration to people there.

Similar is a case in White Hall, Ark., where a Paint mare called Lovey was severely malnourished and missing part of her right front leg when rescued.

An artificial leg was constructed by Michael Lacy of the Snell Prosthetic Laboratory in Little Rock, which

donated the prosthesis built with a combination of titanium, carbon, graphite, and a round hard rubber hoof.

After attachment, Lovey took a few tentative steps and stopped to nibble grass. Surgeon Dr. Teresa Medlock said due to Lovey's kind and gentle disposition, she's likely to adjust quickly.

Another success story, this one in Northglenn, Colo., involves a burro attacked by dogs. The five-month-old called Primrose had both back legs injured, and infection set in. After the bone in the right leg cracked, the limb was ampu-

*Continued on page 14*

**We have Hunting Property Buyers!**  
Does your land have hunting potential? We are averaging 50,000+ hits/month on our marketing websites. These folks are looking to Buy, Lease or Hunt **Quality Kansas Hunting Properties.** If you have land to **Sell or Lease** give us a call, our hunting properties specialist Mark Uhlik will be glad to visit with you. **Broker inquiries welcome. We co-op.**

**The Realty Associates**  
**Mark Uhlik**                      **John Rhine**  
*Agent/Auctioneer*                      *Broker*  
**785-325-2740**                      **888-811-5297**

**FARM MACHINERY AUCTION**  
**Wanted Farm and Industrial Consignments**  
**SATURDAY, SEPTEMBER 6, 2008**  
109 S. 4th Street  
**CLAY CENTER, KANSAS**  
**Demand high, good time to sell.**  
**TO BE ADVERTISED MUST CONSIGN BY THURSDAY, AUGUST 21, 2008**  
Contact Harold Mugler at 785-632-4994 or office: 785-632-3994

**MUGLER AUCTION SERVICE L.L.C.**  
109 S. 4th Street - Clay Center, Kansas  
**Harold Mugler**                      **Randy Reynolds**                      **Paul Geist**  
785-632-3994                      785-263-3394                      785-263-2545  
or Mobile 785-632-4994

**LAND & PERSONAL PROPERTY AUCTION**  
**SATURDAY, SEPTEMBER 13-10:00 AM**  
**American Legion, 708 N. Locust St. FRANKFORT KANSAS**  
70.8 taxable acre tract in N1/2 NW1/4 Section 11, Township 04, Range 09, Marshall County Kansas, Quality upland located on highway #9, great location and access. Approximately 1000 sq. ft. home, 36' X 60' metal building. Rural water & well. Land is located 1 mile north and 1 1/2 mile east of Frankfort KS.  
**Watch for full sale bill or see website.**  
**MILTON D. (DALE) DUNLAP TRUST**  
Auction By: **Joe Horigan Realty & Auction Co.**  
785-292-4591  
[www.jhorigan.com](http://www.jhorigan.com)

**PERSONAL PROPERTY AUCTION**  
**SATURDAY, AUGUST 23 — 10:00 A.M.**  
**Sale will be held on Site**  
**1660 14th Rd. — WASHINGTON KANSAS**  
**DIRECTIONS: From Washington Ks. Go 2 miles south, 1 mile west, 1 mile south This is the NE corner of tract 1. Watch for signs on sale day.**  
**Personal Property begins selling at 10:00 a.m. with land selling at 1:30 p.m.**

**VEHICLES, CAMPER, TRACTORS**  
F350 1990 XLT Lariat flat bed with ball hitch, 4 speed, AC, 106,619 Miles; **1983 JD 4250 Tractor with 158 loader**, pwr. shift, cab, wheel weights, dual hyd, Hrs. 6209 #R0TPF46-001661; JD model 60 tractor # 6047765 partially restored; 1993 Chevy Silverado 1500 Extended Cab, 8 cyl., 2 wheel drive, miles - 184,440; 1995 Dodge Caravan Sport automatic power windows and doors 4 captains chairs 143,000 miles; **2004 Wilderness Advantage, bumper hitch, camper, 290FL, VIN #-1ED1F2921-44280325, 29' 10" length--10' 1" height, 40 gallon fresh water, LP Gas, 1 slide out with end windows, Sleeps 6 comfortably, Like new inside and out; Ford 8N runs good everything works.**

**FARM EQUIPMENT & IRON**  
**Bad Boy 26hp 52" cut zero turn 48.6 hours;** 1957 Ford Car and Thunderbird manual; 100# propane bottle; older stock trailer; Troy Built rear tine tiller; Pincor? PTO generator 16kw; DR Trimmer 6.5hp; home built mower with 5" deck; 3pt post hole digger; heavy duty 2 wheel trailer; 4 wheel trailer; 2 old Chevrolet cabs; Huskee 3pt boom sprayer; truck boxes; 3 pt bale pt; 3 pt bale carrier; road grader pull type; feeder wagon; International 1150 grinder mixer; older Ford cab; 59-60 Mercury Meteor 600; 61-2 Ford station wagon; 40" 8" auger; Studebaker truck cab; bail trailers; flat bed trailers; bale feeders; 3 truck bed trailers; 6' rotary mower; JD 310 disk; JD disk; hay hauler; spring tooth; 22' JD field cultivator; Older JD body; well cup; JD cabs; 2 row field cutter; manure spreader; bale fork; JD 4400 parts combine; JD baler parts; JD combine parts; stock racks; wagon box; JD 4 bottom plow; 3pt JD 414 rotary hoe; Gehl 420 V-rake; lots of scrap iron; many other items undiscovered.

**TOOLS**  
Craftsman welder; boomers; speedy welder; Peter Wright anvil; grease gun; portable heater; handyman jack; 2 wheel cart; Sanborn air compressor; 8 bundles steel posts; HD tow rope; 3 rolls new barbed wire; battery charger; small drill press; 3 pt top link; cylinder; pitch fork; block & tackle; 6" wood planer; Emory wheel; tires; buzz saw blade; 2 fuel tanks; limb loppers; Ventless propane heaters; farm chemicals; Citation power washer; floor jack; 6" bench grinder; Speedco Quick Hitch; 9-22-5 truck wheels; long handled tools; JD mower parts; wagon tongue; come alongs; bottle jacks; halogen light; shop seat; 20' extension ladder; Century battery charger 6/12/24 40 amp; tire tools; magnetic pick ups; lots of scrap iron; corn knives; cabinet clamps; 5th wheel hitch; iron bench; misc motors; rake teeth; nuts, bolts, washers; shop fans; air hose; extension cords; oils & various farm fluids; portable air compressor; shop manuals; coal shovels; 4 way wrench; Homelite weed eater; Radial arm saw; ammo boxes; cast iron wood stove "earth"; belts; ratchet jackets; AC kit with Freon; 1" drive sockets Induro; Milwaukee pneumatic impact gun; gear pullers; 1/2 drive ratchets; shop grinder; 12 speed drill press; Makita chop saw; drill bits; 1/2" drive impact set; locking pliers; DC wrench; screwdrivers; C clamps; water pump pliers; bench vise; speed wrenches; large box end wrenches; Proweld torch kit; pneumatic wrenches; angle grinder; belt sander; skill saws; adjustable wrenches; air bubble; table saw; jig saw; Homelite chain saw; windmill head, barn tin; Huffy 10 speed bike.

**HOUSEHOLD ITEMS**  
Entertainment center; misc dishes; Maytag washer & dryer set; 2 chest deep freezers; croquet set; dishes; cook books; canning jars; stainless steel pots & pans; small appliances; Amana refrigerator; metal desk; 2 carpet rockers; end tables; book cases; dresser; puzzles; toys; Vacuums; bedding & linens; 2 full beds; hospital bed; Tupperware; lamps; fans; card tables; metal bed & frame; dressers; organizer; helmets; records; Kraut Kutter; cast iron pans; gallon jars; fruit jars & canning supplies; many other misc items.

**ANTIQUES**  
Oak beveled mirror; old cupboard; red goose school shoes mirror; kitchen scale; metal toys; egg basket; small crock; chicken crate; oak ice box; square oak table; 6 chairs; buffet; buttons; carnival glass platter; carnival glass bowl; carnival glass fruit bowl; carnival glass candy dish; green depression glass; misc Fireking; Abacus; Nice oak ice box; 6 gal. western stoneware crock; costume jewelry misc dishes; Christian church post card.

**GUNS & COINS**  
Winchester 62A 22 S,L,LR; Marlin 49 DLX 12Ga. Shotgun; Morgan Dollars, 1890-O, 1890, 1897, 1902-O, 1921's; 1971, 1972 Eisenhower dollars; 1861-1961 Washington County Centennial coin; 1860-1960 Washington City centennial coin; 2 buffalo nickels; 1 wooden nickel; 3 Barley grocery tokens.

**JANET KELLER & RACHELLE BURRELL (DAVID ROWLAND ESTATE)**  
For more information Contact: **UHLIK AUCTION SERVICE**  
Karen Stewart - clerk  
**Mark Uhlik, RE Agent/Auctioneer Greg Askren, Auctioneer**  
**A Full Service Realty and Auction Company**  
325 C. St., Washington Ks. 66968  
785-325-2740  
[www.uhlikauction.com](http://www.uhlikauction.com)

**Kansas Cattlemen's Association**  
**P.O. Box 1847 • Manhattan, KS 66502 • Phone (785) 539-6014**  
**E-mail: cowsrus10@sbcglobal.net • Website: www.kansascattlemen.com**

**Callicrate Feedyard**  
Mike Callicrate  
St. Francis, KS  
785-332-3344

**Finney County FY**  
Doug Parham  
Garden City, KS  
620-275-7163

**Maverick Feeders LLC**  
Gene Carson  
Dodge City, KS  
620-227-3308

**Circle Feeders Inc.**  
Bill Porterfield  
Garden City, KS  
620-275-0108

**Hoxie Feedyard**  
Scott Foote  
Hoxie, KS  
785-386-4519

**Winter Feed Yard**  
Ken Winter  
Dodge City, KS  
620-225-4128

**Penner Cattle Inc.**  
Dennis Penner  
Ingalls, KS  
620-335-5190

**Pike Feeders Inc.**  
Byron Pike  
Minneola, KS  
620-885-4452

**Shaw Feedyard, Inc.**  
Bill Shaw  
Ashland, KS  
620-635-2670

**McPherson County Feeders**  
Allan Sents  
Marquette, KS  
785-546-2216

**Rooks County Feeders, LLC**  
Phil Conyac  
Plainville, KS  
785-434-2114

**Ford County Feedyard Inc.**  
Danny Herrmann  
Ford, KS  
620-369-2252

**Ottawa County Feeders**  
Perry Owens  
Minneapolis, KS  
785-392-2184

**Dodge City Feeders**  
Cary Wimmer  
Dodge City, KS  
620-227-9700

**Coake Feeding Co**  
Richard Koenke  
Dodge City, KS  
620-227-2673

**Who has Your Best Interest in Mind?**  
Who has your interests in mind in Your operation? **You Do!**  
What organization can you belong to where you make the policy? **KCA**  
Do you belong to any organization?

KCA does not dictate to you what policies to follow. We follow the direction you put in place. What happens if you do not like the KCA policy ... YOU can change it! One member ... one vote. No one has more influence than another. Some of the issues that PRODUCERS stressed are important that KCA has adopted:

- Kansas Cattlemen's Association supports continued involvement in State and Federal Legislative issues.
- Kansas Cattlemen's Association supports producer and consumer driven Value-Added Beef Programs. and processing facilities whereby producers, feeders and processors as well as other segments involved in the cattle industry can in a fair and competitive market, create the opportunity for profits to be returned back through the supply chain at a fair level for cost of production.
- Kansas Cattlemen's Association supports Mandatory Country of Origin Labeling on all imported and mixed origin cattle and beef, where the importer will bear the burden of proof and cost.
- Kansas Cattlemen's Association supports the elimination of non-negotiated base price captive supplies.

**The Kansas Cattlemen's Association is Kansas' fastest growing cattlemen's association. Our mission is to restore profits, self-esteem, freedom, fair trade, trust and community pride back to the farms, ranches and rural communities across Kansas and the Nation.**



Continued from page 13

tated by Dr. Gayle Trotter at Colorado State University.

"We salvaged ligaments and tendons, and wrapped them around the stump after rounding off the end of the bone. It provides better cushioning for an artificial limb if soft tissue is available," Trotter described.

A firm which makes prostheses for dogs designed Primrose's two-pound, nylon-fiberglass-carbon, fiber-and-acrylic-resin device. Trotter said, "Everything was actually handled exactly as would be done for a person with a below-elbow amputation, although for people, the prosthesis

doesn't have to be as strong."

Owner Bill Lee admitted, "I probably should have put the baby down. I could have bought 30 just like Primrose for what I spent with the initial procedure, let alone the future expenditures and necessary extra care. I still don't regret doing what I've done."

**The Technical Aspects**  
Factors to be considered

before amputation and fitting of a prosthesis include condition that necessitates the amputation, level of the amputation, overall condition and disposition of the patient, status of the opposite existing limb, economic ramifications and owner commitment.

Common conditions for amputation are traumatic leg loss, compound fractures, and arthritis and in-

flammation that have not responded to therapy. Prostheses require six to eight inches of clearance between the end of the leg and the ground. Amputation will be more successful if the horse has adapted to dysfunction of the affected leg.

The process of amputation, subsequent cast changes, and the fitting of the prosthesis may require several anesthetic periods

and prolonged therapy with antibiotics. "Therefore, condition of the patient is extremely important, and chance for success increases if all options are discussed early with everyone involved," Grant noted.

A quiet, loveable horse that tolerates people and administration of medications is not required. "It does demand that a horse

Continued on page 15



In New Orleans, a gray speckled pony called Molly had her right front leg amputated after being attacked by a pit bull terrier, which gnawed the limb and nearly killed the mare. A prosthesis designer, who normally works with humans, built her a leg.

## AUCTION

SATURDAY, AUGUST 23 - 9:00 AM

Offering for sale at public auction, located at 1043 18th Ave., McPHERSON, KS. From the intersection of I-135 and Elyria Road, 2 1/2 miles North.

### TRACTORS, TRUCKS & FARM MACHINERY

1991 Case IH 7110 diesel tractor, trip hyd., 3 pt., PTO, 3,269 hrs., major overhaul at 2,993 hrs., clean; 1982 John Deere 4440 diesel tractor, dual hyd., quick hitch, PTO, 8,060 hrs.; 1982 Ford TW 25 diesel tractor, 3,600 hrs.; 1981 John Deere 2940 diesel tractor, dual hyd., 3 pt., PTO, 3,850 hrs.; 1991 NH L-785 skid steer loader, dual speed trans., aux. hyd., 2 buckets, pallet fork, round bale fork; 1948 John Deere D tractor; AC WD 45 tractor; 1972 Ford F-600 truck with 16' bed and hoist, 4+2, 25,034 original miles; 1959 Ford F-600 truck with 14' bed and hoist, 4+2; 1967 Chev. Truck, 350 eng.; 1955 Chev. Truck; 1954 Ford truck; 1992 GMC 1/2 ton pickup; 1991 Chev. Pickup; 1955 Chev. Pickup; 1977 Chev. Pickup, 305 eng., auto; 1982 Gleaner L2 diesel combine, 24' header; MF 410 combine, 18' header; 1977 John Deere 6600 combine, 22' header; Bradford 240 bu. gravity wagon with roll over tarp; Huskee 225 bu. gravity wagon with hyd. auger; Parker 140 bu. gravity wagon with hyd. auger; 250 bu. gravity wagon; ACL 400 bu. grain cart; BJM 400 bu. grain cart; Great Plains Mo. 1500 15' no till grain drill, 7.5" spacing, center pivot hitch and monitor; Case IH 5300 end wheel drill; 1990 Krause 25' disc; Schaben 500 gal. 3 pt. sprayer with 60' booms and Raven 440 auto control; Gilmore 12' ensilage dump wagon; Kent 40' springtooth; Bush Hog 81' disc; Miller 14' offset disc; John Deere 23 B toolbar; 3 pt. ripper; Kasco 11 shank mulch tiller; Hiniker 30'

field cultivator; Miller 16' offset disc; Brady 15' stalk shredder; 16' rotary harrow with outside wheels; M-C 12' and 9' rotary scythes; 500 gal. sprayer with 30' booms; Krause 28' field cultivator; Crustbuster 30' springtooth; Kent 30' springtooth; Krause 13' chisel; Ford 5-16 semi mt. plow; MF 3-16 plow; John Deere 3 pt. 4 sec. springtooth; John Deere 3 pt. 8' blade; John Deere 4 sec. Drag harrow; Rhino 5' rotary mower; King 32' self dumping round bale trailer, bumper hitch, 8,000 lb. Axle; Merhow 2 horse trailer; 18' car trailer, dovetail; 2 - 6,000 lb. Axles; Donahue 3 pt. hyd. high lift carrier; Unverferth 30' harrow gator; NH 328 manure spreader; John Deere 3 btm. 3 pt. plow; MF 4 btm. 3 pt. plow; John Deere 5 btm. 3 pt. plow; 35' anhydrous applicator, hyd. shut off and rear hitch; 10' 3 pt. rotary mower hyd. log splitter; GH chisel; John Deere 10' speed mover; Crustbuster 28' springtooth; John Deere 14' 3 pt. rotary hoe; 10 - 20' 4 wheel bale trailers with steel stringer; 4 - 14', 16' 4 wheel bale trailers; 6 ton fert. spreader, needs work; 3 pt. round bale spear and carrier; Ingersoll Rand 5 hp. air compressor; Ingersoll Rand 1 ton chain hoist; drill mill augers; 100 gal. L and rec. shape fuel tanks; GPI 12 v. fuel pump; 4'x8' light duty trailer; Big Red 3 wheeler, needs work; pressure washer; round bale feeders; mineral feeder; tires and wheels; rendering kettle; picnic table; AC; elec. motors; ladders; Craftsman tools and wrenches; several wagon loads of farm misc. and household items.

**TERMS:** Cash day of sale. Statements made day of sale take precedence over advertised statements. Schmidt Clerks and Cashiers. Lunch provided by: McPherson United Methodist

**HOWARD & JOYCE HALL, SELLERS**  
**RANDY & KATHY GOERING, SELLERS**

**VAN SCHMIDT • Auctioneer/Realtor**  
7833 N. Spencer Road, Newton, KS 67114  
620-367-3800 or 620-367-2331  
www.kansasauctions.net/schmidt

# ESTATE AUCTION

BUNKER HILL, KANSAS

SATURDAY, SEPTEMBER 6TH • 9:00 AM (SHARP)

BOB SHAFFER ESTATE - SELLER

AUCTION LOCATION: 127 Winthrop Street — BUNKER HILL, KANSAS

★ TRUCKS ★ TRACTORS ★ FARM MACHINERY ★ SHOP TOOLS ★ MISC.  
★ BODY BUILDING EQUIP. ★ GUNS ★ HOUSEHOLD ★ FURNITURE  
★ ANTIQUES & COLLECTABLES ★ LAWN MOWERS

### GUNS, AMMO & ETC.

(SELLING AT 9:00 A.M.)

ADC 45/410 x 2-1/2 O/U; Charter Arms 44 Bull Dog SPL Chrome; H&R 22 LR, Model 999 Sportsman; Charter Arms 44 Bull Dog SPL; Tarus 357 Mag. SS Chrome; SKS 76.2 x 39M, Barska Scope; Ruger 22 LR 10/22 Carbine w/Tasco Scope; Winchester Model 94 30/30 Lever Action; Western Field 12 gauge, Pump, Rib Barrel w/Adjustable Chock; Mossberg 500, 410 Pump w/Pistol Grip; New Daisy Red Rider Carbine BB Gun In Box; Several Gun Cases; Holsters; Shell Belts; 5 Sk5 Clips; 5 mini 14 Clips Tipton Gun Vise; Wood Frame Glass Door 6 Gun Cabinet; Fort Knox Gun Safe on Wheels 65"H x 41"W x 27"D; Gun Cleaning Equipment; Hunting Boots; Assortment of Shells & Casings; Binolux 7 x 50 Field Glasses; Army First Aid Kit; Hand Cluffs.

### TRUCKS

(SELLING AT 2:30 P.M.)

1992 Ford F-150 Ext.-Cab. Pickup, 5 Speed Manual Trans, 300 6 cyl, Air, Wide Box w/Tool Box, 100,000 + Miles; 1963 Dodge 400 Truck, 318 V8, 4/2 Speed, Knaphide All Metal 15' Bed & Hoist; 1962 IHC B-160 Truck, V8, 4/2 Speed, Metal 13.6 Bed & Hoist; 1959 IHC B-160 Truck V8, 4/2 Speed, Metal 13' Bed & Hoist.

### TRACTORS

1979 2390 Case, Cab & Air, 3 pt, 2 Hyds, 12 Speed, Power Shift, Good 18.4 x 38 Duals, Shows 6967 Hrs. SN# 8841128, Always Shredded; 1969 1032 Case, Factory Cab w/Blower Fan, 1000 PTO, 8 Speed, 3 Pt, 2 Hyds, Near New Tires (23.1 x 30) SN# 8358645, Well Kept Tractor, Shows 1984 hrs. Always Shredded.

### COMBINE

1968; AC E III Combine, 13' Header, Femco Cab & Water Cooler, 4 Cy Gas Engine, SN# 25914, Real Slick Combine, Always Shredded.

### TILLAGE & MISC.

**EQUIPMENT & TRAILERS**  
Drill - Case I-H 16-10-DD, 5100 Flute Feed w/Fertilizer, Very Good Condition.; Drill I-H 150 Hoe Drill, 16-10 w/Fertilizer Attachment.; Drill IH-150 Hoe Drill, 14-12, No Fertilizer; 1999 Sunflower L211-15' Tandem Disc W/Tine Levelers, Very Good Condition.; 1999 Sunflower 5034 - 25' Field Cultivator, Very Good Condition.; Sunflower 15' Under Cutter w/NH3, Attachment & Pickers; Flex-Kink 12' Under Cutter w/375 gal NH3 Tank and Attachment w/Tine Levelers; Shop Made Tractor Track Leveler for Pulling in Front of Drill; Kory Farm 4 Wheel Grain Cart on 10 Ton Running Gears w/Hyd. Unloading Drill Filler Auger, Very Good Cond.; 12 Volt Drill Filler Auger; Trailer Type 200 gal. Diesel Fuel Tank w/Metered GPI 12 Volt Transfer Pump; Kuker 60 Gal. Slide in Pickup Sprayer w/Hand Spray Wand & Tecumseh Gas Engine, Very Good Cond.; Shop Made 8' x 18' Tandem Axle Trailer, Metal Floor, 2 5/16" Ball Hitch; Ford Pu Wide Box Trailer w/Leaf Springs, Ball Hitch.

### LAWN MOWERS

Craftsman 6.5 Hp Push Lawn Mower; Wegele Scooter 3

Wheel Riding Mower; Hydra - 14hp Kuhler Engine 38" Cut.

### SHOP EQUIPMENT & TOOLS & MISC.

5 gal Propane Bottle; Craftsman Multi Drawer Tool Box; Extension Cords; Asst. Shovels; New Morrone HD 5100 Double Burner; Lawn & Garden Supplies; Asst. Spray Paint; Coleman Catalytic Heater; Electric Fans; Stihl Presser Washer RB220K w/Honda GX110 Gas 3.5 hp Motor; 2 - Wheel Carts; Stihl P580 Weed Whip; Coleman Power mate 10hp. Tecumseh Engine Maxa 5000 ER Plus Portable Generator; Craftsman 4.25 Hp. Wet & Dry Vac; Craftsman 3/8" Drill Drive 13.2 V; 110 Voh Gadaport Moveable Cooling System, on Wheels 42"H x 29"W x 29"D; 2 Wooden work Benches; 28 Drawer Nut & Bolt Cabinet; 15 Drawer Screw Cabinet; 3 Tier Round Tool Organizer; Craftsman 4 Drawer Small Tool Box; Heavy Duty Shop Stool; Asst. Pad-A-Locks w/Keys; Large Asst. Shop Tools; Century Bpip/99, Portable Cordless Rechargeable Drill; Craftsman Battery Operated 15.6 Drill; 2 - New Garden Hoses; 6' Werner Step Ladder; 3 - 1400 BTU Heaters w/5 gal Propane Tanks; 10 Double Ext. Ladders; 2 - Implement Hyd. Cylinders; 2 - Load up Ramps; Comfort King Cab Water cooler; Sanborn 4 hp. Electric Air Compressor; Campbell Housfeld Electric Air Compressor; Wheel Barrow; Lawn Spreader; Lawn Boy Kerosene Heater; Dura-Craft 16 speed. Model 4516 Standing Drill Press; Stacking Tool Box on Wheels; Floor Bottle and Hi Lift Jacks; Vises; Metal Work Bench; 3 - Shop Vacs; Fiberglass Tool Box; Parts Wash Tub; Electric Grease Gun; Heavy Duty 2 Wheel Cart; Large Craftsman Tool Box; Sears 3/4hp Bench Grinder; 4" Grinder; Battery Chargers; Power Pro 5 hp Standing Air Compressor; Air Impact Gun; Cement Mixer w/Electric Motor; Smith Cutting Torch (Not Selling Bottles); Torch Cart; Electric Welder; Metal Saw Horses; Log Chain; Asst. of Hyd, Engine Oil & Grease; Pipe Wrenches; Pipe Champs; Tie Down Ratchet Straps; Metal Work Bench; Come-A-Long; Several Sections of Wooden Pigeon Hole Storage Cabinets; Boys Bicycle; Starett Level Instrument.

### HOUSEHOLD & MISC.

Cookware; Dishes; Stem Goblets; Drinking Glasses; Water Crock; Spice Cabinet; T.Fal Steam Cuisine; Conventional Oven; Northern Industrial Corn & Grain Grinder; Wheat Juicer/Chopper; Large Plant w/Plant; Norman Rockwell Beer Steins; New 5 qt. Cast Iron Dutch Oven; New Electric Ronco Food Dehydrator; Metal Stand; Full 5 gal Water Jugs; Toaster Oven; MW Micro Wave; Micro Wave Stand; George Foreman Grilling Machine; 16 qt Soup Kettle; Hanson 25lb Kitchen Scale; Jack LaLann's Power Juicer; Farberware Glass Coffee Pot; Micro Wave Dishes; Presser Cooker; Large Rectangular Serving Pans; Pyrex Procter Silex Juicit; Vegetable Chopper; Blender; Electric Radio Clock; Electric Floor Heaters; Asst. Utility Stands; Card Table; Folding Chairs; Shower Chair; 3 Drawer Dresser; Large Asst. Lamp Oil; Dis-

tilled Water; Asst. Electric Fans; Realistic High Power AM/FM Stereo; Pine Rocking Chair; New Pure Water Purifier; Set National Geographic Books; National Geographic Magazine; Pine Kitchen Cabinet; Pure Water Aqua D2000 Purification System; Cobra CB Radio; Kenmore Small Chest Type Deep Freeze; 2 Kitchen Stools; Twin Bed w/Mattress; Metal Type Writer Table; Olympia Manual Typewriter; Kenmore Small Window Air Conditioner; New Sunray Out Door BBQ; Bissell Power Force Bagless Sweeper; Wooden Status of Farmer; Wooden End & Corner Tables; 4 Tall Book Shelves; Curio Glass Cabinet; Large Wood Frame Fabric Chair; 2 - Green & Brown Rocker Recliners; Wood Frame Fabric Couch; Small Book Case; Lamps - Floor - End Table - Desk; Oak Entertainment Center; Oval Wood Frame Mirror; Wooden Night Stand; Crosley 30" Color TV w/Remote; Crosley Color TV 19" w/Remote; VCR; Mantel Clock; Hoover Steam Vac -Spin Scrub; Lounge Chair w/Cushion; Inside Barometer; Humidifier; 3 Tier Wooden Stand; Hoover Hold-A-Way Vacuum; Health-O-Meter Scale; Indian Blankets & Throw Rug; Resistol cowboy Hat w/Box; Caller ID Telephone; Small Wooden Table; Full Size Brass Bed w/Mattress; Wooden Matching Dresser w/Mirror - Chest of Drawers - Night Stand (Cream); 5 Drawer Chest of Drawers; Full Size Wood Frame Bed w/Mattress; Wooden 10 Drawer Dresser w/Mirror; Oak Dresser w/Night Stand; Wooden Magazine Rack; Wooden Desk; Large Gold Frame Mirror; Wooden Small Handkerchief Box; Stuffed Animals; Kenmore Heavy Duty Washer & Kenmore Heavy Duty Electric Dryer; 3 - 45 Gal Trash Containers; Kitchen Aid Side by Side Refrigerator (White); 3 Large Iron Racks for Wood; Cords of Wood; Heat Pet Water Bowls; Full Size Bedding - Sheets - Blankets - Pillows - Bedspreads; Office Chair; Soleus Flat Panel Electric Heater; Aurora Paper Shredder; Honeywell Floor Heater Panasonic Clock Radio; Stereo w/Speakers; Large Asst. 8 Tract Tapes; Asst. Books; Wooden Boot Puller; Small Electric Heater; Devil Bliss Oxygen Concentrator Machine; Automatic Dehumidifier; Kinyo 1 Way VHS Rewinder; Ironing Board; Flash

Lights; Large Metal Office Desk; 40 Channel Portable CB Radio; Utility Selves; Letter Baskets; Small Office Supplies; Locking Filing Cabinet Sharp Calculator; 3 Drawer Horizontal File Cabinet; File Organizer; Lateral File Cabinets; Large Stuffed Brown Office Chair; Melink Small Safe 22"H x 17"W x 23"D; Wooden Organizer; Brief Case; Men's Caps.

### ANTIQU & COLLECTABLES

Child's Leather Cowboy Boots; Old Prints of Airplanes; Plaque of Military Metal; Household Kitchen Scale; Wood Frame Oak Rocker w/Cushion; Fanner #50 Toy Gun w/Holster; Quilts; 5 Drawer Chest of Drawers; Kitchen Cabinet (Painted & Nice); Metal Volts Wagon Dinky Toy; Metal red Truck Dinky Toy; Oak Chairs \*Child's Christening Gown; Wooden Canes; Religious Pictures; Prints; 8 PC Setting of Sterling Silver Tableware w/Box; Wooden Foot Stool; Kerosene Lamps; Old Music Band Hat; Old Sheet Music; Oak Wash Stand; Oak Library Table w/Drawer 29"H x 42"W x 28"D; Mirror; Oak Table 48" Round; Oval Picture Frame 17" x 23"; Metal Sunbeam Bread Rack & Camel Back Trunk (Refinished); Corn Knife; Men's Jewelry; 6 Men's Turquoise Boa's; White Mountain Crank Ice Cream Freezer; Saw; CHICAGO WORLD FAIR Souvenir Spoons 1933-1934, 12 Sterling Silver Spoons & 1 Fork From The Great Depression, Their are only a few Sterling Silver Spoons Left From The Chicago World Fair at present time; 20 Miniature Plastic & Metal Tractors, Trucks & Military Tanks; Golden Eagle Belt Buckle; Log Tonges.

### BODY BUILDING EQUIPMENT

(Selling at 1:00 p.m.)

Nordic Tract TRL 625 Exercise Bike; Total Gym 1000w/Weights; Bar Bells; Electric Vibrating Pads; Jake Abscissor Exeriser; Nordic Track Ski Exerciser; Body Smith Weight Bench (Arms & Chest); Adjustable Upright Lift Bench w/Bar Bells; Heavy Duty Weight Lifting Machine w/Weights; Heavy Duty Weight Lifting Machine w/Bar Bells; Body Smith Arm & Upper Torso Bench; Scandia Gym; Continental System Weight Lifting Bench; 2 Stands for 14 Hand Held Weights; Large Asst. Weights; 3 Tier Stand for Bar Bell Weights; 30 Etc. Bar Bell Weights.

**TERMS: CASH OR GOOD CHECK.** We may run two rings on parts of sale. LUNCH: Dorrance American Legion Ladies Auxiliary. RESTROOMS AVAILABLE. Any statement day of sale takes precedence over any printed matter.

**NOTE: ORDER OF SALE: 9:00 A.M. Guns, Followed by Household \* 1:00 P.M. Exercise Equipment \* 2:30 P.M. Trucks & Tractors & Farm Machinery, Lawn Mowers.**

www.victorbros.com or www.GrassandGrain.com/victor

## Victor Bros.

### Auction & Realty, Inc.

2505 Avenue E Box 5, Wilson, KS 67490  
Phone (785) 658-2254 or 2255

**FRANK L. PRINC, Auctioneer / Owner / Broker & Certified Appraiser**  
785-658-2254 or 2255

AUCTIONEERS • BROKERS • APPRAISERS

John Hlaus Associate Auctioneer	Shelly Whitmer Real Estate/Licensed Appraiser PH 785/658-5525	Vicki Kaiser Real Estate PH 620/ 587-2326	J.L. Kasper Associate Auctioneer
---------------------------------------	---	---	--



# GRASS & GRAIN Auction Sales Schedule

August 20 — Boat, trailer, furniture, appliances, collectibles, Hallmark, Disney, dolls, glass at Manhattan for Dorothy Hyle, Fred Boeding Estate & Betty Wiechmann Estate. Auctioneers: Vern Gannon Auctions.

August 21 — Button collection, dolls, furniture & misc. at Concordia for Joan Demannette & Buelah Nobert. Auctioneers: Larry Lagasse Auction & Real Estate.

August 21 — Farm machinery consignment N. of Tekamah, NE for Lee Valley, Inc.

August 22 — Hunting land & personal property at Uniontown. Auctioneers: JP Weigand Realtors.

August 23 — Leather & tack shop items, antiques & collectibles, general household at Clay Center for Paul Williams. Auctioneers: Mugler Auction Service, LLC.

August 23 — Greenwood County land at Eureka for Wallace R. Hall Revocable Trust. Auctioneers: Sundgren Auctions.

August 23 — Tractors, campers, truck, farm machinery, tools, household items, antiques & collectibles at Washington for Janet Keller & Rachelle Burrell (David Rowland Estate). Auctioneers: Uhlik Auctions.

August 23 — Real Estate, Washington Co. land at Washington for Janet Keller & Rachelle Burrell (David Rowland Estate). Auctioneers: Uhlik Auctions.

August 23 — Real Estate, fixtures & collectibles at Clifton for The Clifton Christian Church. Auctioneers: Raymond Bott Realty & Auction.

August 23 — Steam engines & tractors, vehicles, antiques & collectibles at Rising City, NE for Lorán Heins. Auctioneers: Michael Wegener Auctions.

August 23 — Tractors, trucks & farm machinery at McPherson for Howard & Joyce Hall, Randy & Kathy Goering. Auctioneers: Schmidt Auctions.

August 23 — Furniture, appliances, riding lawn mowers, trailer, tools & misc. at Junction City for Jess Appodaca Estate. Auctioneers: Brown Real Estate & Auctions.

August 23 — Farm equipment & personal property

at Lebanon for Nick & Phyllis Boden. Auctioneers: Wolters Auction & Realty.

August 23 — Car, scooter, guns, collectibles, household & tools at Salina for Frances Lee McClintock Trust. Auctioneers: Bob Thummel Auctions.

August 23 — Purebred swine sale at Salina for Kansas Purebred Swine Breeders Association.

August 23 — Household, collectibles, antiques, shop tools, BB guns at Herington for Irvin & Audine Strand, Warren & Dodie Dix. Auctioneers: Bob Kickhaefer, Dave Buris.

August 23 — Old & collectibles, household, tractor, equipment, old equip. items, car, shop, butchering equip. & guns at Marion for Leland Seifert Estate. Auctioneers: Leppke Auctions.

August 23 — Old, collectibles, household furniture, appliances, trailer, vehicle, shop tools & misc. at Wichita for Jerry & Barbara Holtzinger. Auctioneers: Auction Specialists.

August 23 — Guns, Indian artifacts, fishing, canoe, antiques & collectibles at Ottawa. Auctioneers: Buddy Griffin Auctions.

August 26 — Real Estate-4 homes at Manhattan. Auctioneers: Vern Gannon Auctions.

August 27 — Consignment at Spring Hill for Countrywide Tractor & Auction.

August 27 — Tractor, lawn & garden, tools, furniture & household at Manhattan for Marian Hopkins & Mr. & Mrs. Roy Milleret. Auctioneers: Vern Gannon Auctions.

August 28 — Consignment at Cornlea, Neb. for Michael Wegener Implement, Inc.

August 28 — Real Estate-Land with house at Effingham for Bill & Alice Taliaferro Estate. Auctioneers: Branam's & Harris.

August 28 — Marion Co. land at Pilsen for Lawrence Tajchman Living Trust. Auctioneers: Leppke Auctions.

August 30 — Shop tools, vehicles, household goods & misc. near Green for Armin Brandhorst Estate. Auctioneers: Kretz, Hauserman, Bloom Auction Service.

August 30 — Household, antiques, collectibles, tools & pickup at Chapman for Elbert "Bud" & Wilma Anderes. Auctioneers:

Reynolds, Mugler & Geist. August 30 — Misc. tools, household, thrift store at Herington. Auctioneers: Bob Kickhaefer.

August 30 — Tractor, hay equip., trailers, pickup & trucks, combine, planting & tillage, livestock & grain equip., hay & misc. at Admire for Don & Kathy Wood. Auctioneers: Hancock Auctions.

August 30 — Glass & collectibles at Salina. Auctioneers: Bob Thummel Auctions.

August 31 — Evans 26th Annual Production Sale AQHA & ABHA Performance Breed Horses at Emporia for George & Sue Evans. Auctioneers: Beaty & Wischropp Auctions.

August 31 — Angus female sale at Burrton for McCurry Angus Ranch.

August 31 — Land in Shawnee & Jackson Co. tractors, machinery, shop, tools & household items at Rossville for Robert Harden Estate Trust. Auctioneers: Vern Gannon Auctions.

August 31 — Collectibles, guns, pottery & glass at Salina. Auctioneers: Bob Thummel Auctions.

August 31 — Furniture & collectibles at Council Grove for Gary & Diane Bolton & Others. Auctioneers: Hallgren Auctions.

September 1 — 13th annual Labor Day consignment auction at Lyndon. Auctioneers: Harley Gerdes Auctions.

September 1 — Quality shop tools, Ham Radio equipment at Onaga for Marcela Fairbanks. Auctioneers: Cline Realty & Auction.

September 1 — Coins, ammo, hunting, fishing, tools, automotive, toys, signs, railroad items, kitchen collectibles & misc. at Newton for Lifetime Collector. Auctioneers: Auction Specialists.

September 1 — Furniture, glass & collectibles at Salina for Helen Serrault Trust. Auctioneers: Bob Thummel Auctions.

September 2 — Farmland, grass & hunting prospect at Ada. Auctioneers: Eric Blomquist.

September 5 — Equipment, tools, household, collectibles & misc. S. of Delavan for Don Miller. Auctioneers: Bob Kickhaefer.

September 5 — Land auction at Hanover for S.S. &

P. Farms, Inc. Auctioneers: Schultis & Son, Inc.

September 6 — Fall machinery auction at Clay Center. Auctioneers: Mugler Auction Service, LLC.

September 6 — Farm/recreational land at Washington for The Ferrell Family Trust. Auctioneers: Raymond Bott Realty & Auction.

September 6 — Farmland at Washington for the Fruh Trust. Auctioneers: Raymond Bott Realty & Auction.

September 6 — Pasture/recreational land at Washington for Todd & Tracey Crome. Auctioneers: Raymond Bott Realty & Auction.

September 6 — Machinery, car, household goods & trucks W. of Cheney for Caroline M. Stuhlsatz Trust. Auctioneers: Giefer Auctions.

September 6 — Farm machinery, collector tractors & collector machinery at Danbury, Iowa for Charles Pete Wolterman Estate. Auctioneers: Gehling Auctions.

September 6 — Trucks, tractors, farm machinery, shop tools, body bldg. equip., guns, household, furniture, antiques, collectibles & lawn mowers at Bunker Hill for Bob Shaffer Estate. Auctioneers: Victor Brothers Auctions.

September 6 — Trailers, lawn & garden equip., power tools, household, antiques, guns, mechanic tools at Belleville for Mrs. Charles Love. Auctioneers: Novak Brothers & Gieber.

September 6 — Home & real estate at Burns for Laura Rose. Auctioneers: Sam Griffin Auctions.

September 6 — Furniture, collectibles, tools & misc. at Council Grove for Dennis Hughey Estate. Auctioneers: Hallgren Auctions.

September 8 — Liquidating livestock operation, late model machinery, livestock equipment, bulk bins & lots of hay near Longford for Doug & Evelyn Matson. Auctioneers: Kretz, Hauserman, Bloom Auction Service.

September 11 — Dickinson Co. land at Abilene. Auctioneers: Omli & Associates.

September 13 — Farm sale, tractors, trucks, machinery & tools N. of Scandia for Gary Goodwin. Auctioneers: Larry Lagasse Auction & Real Estate.

Continued on page 16

## Hunting Land & Personal Property Auction

Friday, August 22 @ Noon. Auction Held On-Site

1191 Hwy 3, Uniontown, Bourbon County, KS. Hunting & recreational getaway. 231 +/- ac. w/log home & other outbuildings. Marmaton River, 3 ponds, heavy timber, pasture & tillable land. 3 bdrm., 1.5 bath log home has 2,072 sq ft total living area. Built in 1960 w/extensive remodel in 1996. Must see! Shown by appointment only. Personal property includes:

- One Kubota tractor
- One Kubota tractor/loader & attach.
- Two brush cutters
- One 6' blade
- One finish mower
- One rototiller
- Max II land & water vehicle
- and more

Call Terry or John Rupp for an auction flyer at (316) 262-6400

or email: rupp@weigand.com • www.weigand.com



## RESIDENTIAL REAL ESTATE AUCTION

SATURDAY, AUGUST 23 — 10:00 AM CST

Auction Location: 723 West Walnut — HERINGTON, KS

Two properties to be sold as one unit.

AUCTIONEER'S NOTE: LOT size of 50' X 140'. Two properties, LOT #1: 2 story 1,684 square foot house. LOT #2: 456 square foot bungalow space. Both properties will be sold as one unit, contents included.

See last week's Grass & Grain for picture & details

SELLER: MID AMERICA NAZARENE UNIVERSITY FOUNDATION

For details, terms and conditions, or to view these properties, visit [www.BinaAuction.net](http://www.BinaAuction.net) or call 785-258-3109

AUCTION • READY • APPRAISAL

**BINA Auction SERVICE**  
Herington, KS  
[www.BinaAuction.net](http://www.BinaAuction.net)  
620-338-6378  
Ruckers Real Estate

Byron J. Bina  
Professional Auctioneer  
Real Estate Agent  
Property Manager



## LAND AUCTION

SATURDAY, AUGUST 23 — 10:00 A.M.

Sale will be held on Site

Directions: From WASHINGTON KS. Go 2 miles south, 1 mile west, 1 mile south This is the NE corner of tract 1.

Sale will be held on Site. Watch for signs on sale day

Personal Property begins selling at 10:00 a.m. with land selling at 1:30 p.m.

### LEGAL

Tract 1 NE 1/4 Section 27 T03 R03 minus an approximate 20 acre tract. east of the 6th P.M.

Tract 2 N 1/2 NW 1/4 Section 27 T03 R03 east of the 6th P.M.

### Description: Tract 1

These farms lie approximately 3 miles south and 1 mile west of Washington Ks.

Tract 1 consists of Approximately 119 with 55.49 acres of dryland crop acreage, the balance approximately 63.51 acres of trees, pasture and wildlife habitat. The property is rolling in nature with small fields on the tillable areas and native oak and other hardwood trees bisecting the cultivated areas. Ash creek runs through the middle of this farm. There is a 3 bedroom, 1.5 bath earth contact home with new central heat and air, and a new roof, this home is very energy efficient. There is a metal machine shed, metal storage shed, and many other outbuildings in good shape. along the west edge of the property. This property has running water, many oaks, walnuts, and other hardwood trees, diversified crops, and native grass pasture make this excellent deer and turkey habitat. Great farm for investment or to begin farming. All mineral rights sell with the farm and are intact.

Base Acres and Yields: Wheat 35.8 acres Yield 35 Bu.; Grain sorghum 20.8 acres Yield 58 Bu.

TAXES: for 2006 are \$1071.83

### Description: Tract 2

These farms lie approximately 3 miles south and 1.5 miles west of Washington Ks.

Tract 2 consists of Approximately 77 acres with 21.66 acres of dryland crop acreage, 55.95 acres of excellent native grass pasture. The property is located along a good township road. The tillable land is fairly flat with minimal terraces. This property has good tilth, texture, and permeability. All mineral rights sell with the farm and are intact.

Base Acres and Yields: Wheat 13.4 acres Yield 35 Bu.; Grain sorghum 7.8 acres Yield 58

TAXES: for 2006 are \$306.16

TERMS & POSSESSION: 10% down per tract, day of the sale, balance due on or before the 30th of September 2008. Seller to pay the 2008 taxes. 2009 taxes will be the Buyers responsibility. Title insurance, Escrow and Closing costs will be split equally between buyer and seller. This property is being sold subject to tenant's rights, Possession on all land will be Jan 1 2009 House and buildings possession will be at closing. This farm is being sold AS-IS, All inspections should be made prior to the day of the sale. This is a cash sale and will not be subject to financing, have your financing arraignments made prior to sale day. The Realty Associates are representing the seller and do not represent the buyer. All information has come from reliable sources; potential bidders are encouraged to verify all information independently. All announcements made the day of the sale will take precedence over any other information.

SELLERS: JANET KELLER & RACHELLE BURRELL (DAVID ROWLAND ESTATE)

For more information Contact:

The Realty Associates

A Full Service Realty & Auction Company

Mark Uhlik, R.E. Agent/Auctioneer

325 C. St., Washington Ks. 66968 • 785-325-2740

John Rhine, Broker

1906 M. St. Belleville Ks. 66935 • 888-811-5297

785-325-2740

[www.uhlikauction.com](http://www.uhlikauction.com)

## For the Love of Horses, continued

Continued from page 14

have the ability to adapt to rapidly changing situations in a calm and rational manner.

"A horse that has learned to sleep and rise with an injured leg in a cast, enjoys human contact, is tolerant of injections, continues to have a good appetite and normal bowel movements should be able to undergo and recover from surgery without problems," explained Grant. Surgery itself typically takes less than two hours.

Conditioning a potential patient to a sling often indicates its ability to adapt to new situations. Exposing the horse to the sling also helps during initial anesthesia recovery.

Original cost of the procedure and recovery, subsequent cast changes, purchase and fitting of the pro-

thesis and daily expenses for the rest of the horse's life must be discussed with owners before the treatment regimen begins, the specialist emphasized. Initial surgical costs are said often to be in the \$10,000 to \$20,000 range.

"The payment of a significant professional fee before this undertaking begins is often the surest way to determine the owner's true level of commitment," Grant contended.

Most common complication encountered is failure to attain primary healing. However, compensatory laminitis (referred to as founder by lay horsemen) is the most frequent reason for euthanasia of amputees that have been fitted with a prosthesis.

"Patients with long-term problems before amputation and those that could not

learn to lie down are the likeliest to experience bone rotation on the opposite leg," Grant described.

Although hind leg prosthesis cases are more difficult to engineer than front legs, Grant claimed the horses "do better, and can gallop quite rapidly."

### Promising Future For Equine Prostheses

Amputation surgery has been successful in all cases Grant has handled. However, about 50 percent of the horses were euthanized within a year because of complications, including poor adaptation, laminitis, infections, and fracture due to stress.

One horse lived 15 years with an artificial leg. A stallion was used for breeding for three years, several mares had live foals and some other mares conceived but aborted during gestation. "Horses with a prosthesis should not be

ridden," Grant stated.

Dr. Ted Vlahos, board-certified equine specialist at the Sheridan Equine Hospital, P.C., Sheridan, Wyo., has successfully performed many amputations over the past decade. "One of my recent cases was an amputation and prosthesis on a mare's hind leg. It's been 60 days postoperative, and she is galloping and doing great," he evaluated.

There are currently two amputees in the Sheridan hospital. "In 2005, I published the largest case study in veterinary literature on 30 distal limb cases that Dr. Ric Redden and I compiled," Vlahos revealed. "I think that between Dr. Grant, Dr. Redden and myself, there are close to 100 cases out there."

"The results are impressive, and the horses are remarkably comfortable due to this life-saving procedure," Vlahos verified.





# BAXTER BLACK

ON THE EDGE OF COMMON SENSE

## A Korean Beef

Juxtaposed on opposite pages of the BBC International newspaper were two stories; "... thousands of people (in Seoul, South Korea) protesting against resumption of U.S. Beef imports..." and "The U.S. announced that it will send half a million tons of food aid to North Korea."

How can two groups of people so closely connected hold such strong opposite opinions about the safety of U.S. food exports? Easy. It's the haves versus the have-nots. South Korea is a strong democratic nation, our ally, who owes its existence to the U.S. and the United Nations. It has the luxury to be choosy. Their protest

against American Beef, as stated, is the fear of B.S.E. but is really to protect their highly subsidized isolationist agricultural trade policy. That's not a crime but they should not hide behind food safety as a reason.

Whereas North Korea, an oppressed country led by a dictator, lost an estimated one million people to starvation in the '90s and is facing another famine. The government has nuclear weapon intentions, a cruel disregard for its own people, and has been threatening invasion against South Korea since we pushed them back in 1951. 33,000 American soldiers died protecting South Korea.

So the question that bubbles up like acid indigestion in many of us when we hear South Koreans shouting, "We don't need U.S. troops and we don't need U.S. mad cows!" is, 'Why did we help the ingrates in the first place?'

Four days after Saddam's statue was pulled down in Baghdad, there were anti-U.S. Iraqi's protesting. I realize now they were Saddam's cronies, but still. When the French politicians curse us, the British press demean us, and when our closest friends, the Canadians accuse the USDA of a conspiracy to falsify our B.S.E. findings... it all hurts.

So much of our blood and our wealth has been spent protecting freedom on this planet. One cannot imagine a world today if the U.S. had refused to intervene. Paris would be a German suburb, South Korea would be a Japanese or Communist slave state, and Abu Ghraib

would still be the real torture chamber it once was under Saddam.

Why is such a powerful country, the United States of America, so generous in spite of such deliberate insults and bashings? In my opinion it is directly related to the strong religious beliefs of our founding fathers, in which we still abide.

We do not do good deeds to 'show off'. We help the downtrodden, be it the homeless in San Francisco or the starving in North Korea, because Christ said, as you do for the least of these my brethren, you do unto me. And we turn the other cheek to the 'What have you done for me lately's,' because we are directed to show forgiveness and mercy to all who offend.

It is the embodiment of God's grace. And the saving grace for all the Frances, South Koreans and Iraqis of the world who are free people today because America believes.

## Auction Sales Schedule

Continued from page 15

September 13 — Land & personal property at Frankfort for Milton D. (Dale) Dunlap Trust. Auctioneers: Joe Horigan Realty & Auctions.

September 13 & 14 — Large 2-Day toy & antique sign auction at Lawrence for Edna Jewett. Auctioneers: Phil Detrixhe & Bob Thummel Auctions.

September 16 — Washington Co. Real Estate at Linn for Raymond & Loetta Duey. Auctioneers: Larry Lagasse Auction & Real Estate.

September 20 — Furniture, antiques & misc. at Concordia for Howard & Mary Kenworthy. Auctioneers: Larry Lagasse Auction & Real Estate.

September 20 — Guns, ammo, shop hand & power equip., lawn & garden equip., antiques & household at Minneapolis for Dwain & Linda Galgerud.

Auctioneers: Bacon Auction.

September 20 — Woodworking tools, household & misc. at Abilene for Jack Wood Estate. Auctioneers: Kretz Hauserman Bloom Auction Service.

September 21 — Murray Ranches Production Horse Sale at Alma.

September 27 — Real Estate, automobile, collectibles & household at Linn for Don and Anita Singular. Auctioneers: Raymond Bott Realty & Auction.

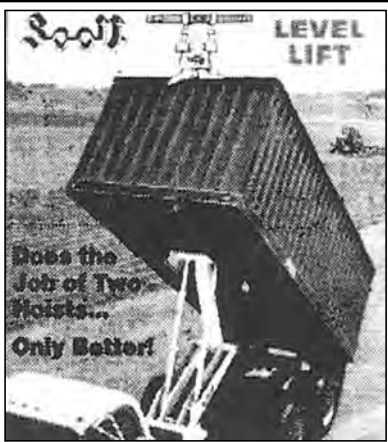
September 28 — 28th annual Quarter Horse sale at Emporia for Cooper Quarter Horses. Auctioneers: Carey Macy.

September 28 — Antiques, collectibles & furniture at Council Grove. Auctioneers: Hallgren Auctions.

September 29 — Real Estate at Munden for Faye Homolka Rizek. Auctioneers: Larry Lagasse Auction & Real Estate.

### DISTRIBUTORS FOR:

- Scott, Obeco, Knapheide and Reiten Grain Bodies
- Shur-Lok Roll Tarps
- SRT 2 Roll Tarps
- Pickup Roll Tarps
- Aulick and Scott Tapered Silage Bodies
- Aluminum Pickup Beds
- Tool Boxes
- Frame and Driveshaft Lengthening, Shortening and Repair.



### JOHNNY'S WELDING

1901 S. 6th (South U.S. 77 Highway)  
402-223-2384 Beatrice, Neb.

### Building Solutions You Can Trust



Engineered Wood Framed Metal Buildings  
Call for FREE ESTIMATE or visit our Website  
For on-line pricing  
Building Materials and do it yourself  
Building kits available.

### K-Construction Inc.

Alta Vista, KS  
785-499-5296  
www.k-constructioninc.com

MS metal sales 45 year warranty on material  
MFG. Corp. Job site delivery

### HYDRABED

The Original Flatbed Bale Handler

- OPTIONS:
- 3 Spool Valve,
  - Post Hole Digger,
  - Cake Feeder,
  - Dump Box,
  - Toolboxes



Beds In Stock • On-Site Installation

Grill Guards/Running Boards

### MILLER RANCH EQUIPMENT

Alma, KS 785-765-3588  
www.MillerRanchEquipment.com

## A Lazy Half-Mile East of the Manhattan Airport

PHONE: 785-410-5451



Ask for Larry Ruthstrom

# Briggs

785-410-5451

WHOLESALE FLEET OUTLET  
BRIGGS FLEET/LEASE VEHICLES  
4810 SKYWAY DR, MANHATTAN, KS

### 1998 CHEVY C-7500



Cat, 5x2, AC, 67,000 miles.  
**\$19,895**

### 2005 CHEVY SILVERADO LT



Leather, buckets, 4WD, 51,000 miles.  
**\$17,985**

### 2006 CHEVY COLORADO



4 cyl., auto, A/C, **ONLY 16,000 MILES!**  
**\$10,985**

### 2006 DODGE 1500



Quad Cab, Hemi, 20's, Big Horn,  
29,000 miles.  
**\$19,985**

### 2007 DODGE RAM 1500



4.7L V8, auto, 4WD, only 16,000 miles.  
**\$19,900**

### 2006 FORD F-350



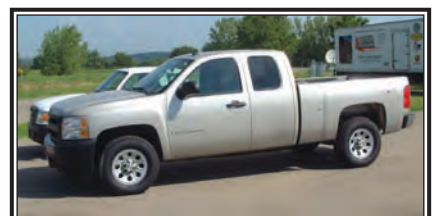
**KING RANCH**  
Powerstroke, 4WD, Auto, 58,000 miles.  
**\$29,985**

### 2005 DODGE RAM 1500



Rumble Bee, 5.7 Hemi, 4WD, 20's,  
only 15,000 miles!  
**\$19,985**

### 2007 CHEVY EXT. CAB



4WD, V8, cruise, tilt, **17,000 miles.**  
**\$17,988**

### 2007 GMC REG. CAB



5.3L, 2WD, full power, 31,000 miles.  
**\$16,485**

### 2007 DODGE RAM 3500



**MEGA CAB**, 5.9 Cummins, 4WD, Auto,  
only 17,000 miles!  
**\$30,500**

### 2006 FORD F-150



4WD, XLT, V8, 35,000 miles.  
**\$17,900**

### 2006 CHEVY C-1500



2WD, Auto, 4.8L, 26,000 miles.  
**\$12,985**

lruthstrom@briggsauto.com • www.briggsauto.com