

Evaluating freeze-damaged wheat during a “Charlie Brown” growing year

By Josh Coltrain,
Crop Production Agent,
Wildcat Extension District

This may be the “Charlie Brown” of wheat-growing years. A nice warm weather stretch would be equivalent to Charlie confidently approaching the football, but Mother Nature’s Lucy pulls the foot-

ball away with record cold temperatures. The question that is on most wheat producers’ minds is how much damage have their plants taken.

The correct answer is it depends, which is the correct answer to almost every agricultural question. The two most import-

ant factors are how low the temperature fell and the growth stage of the plants.

Wheat yield is determined by a multitude of factors that include seed weight, seeds per head, and heads per area. While most know the growth and development of wheat, it is probably worth reviewing.

All wheat plants have a main stem that grows from the seed. This main stem is quite important (more on that later) to yield but there are additional stems that grow from the same plant called tillers. These can form in the fall, which contribute more to yield than the ones that form

in the spring. Unfortunately, there was not an abundance of fall tillers formed last fall.

The main stem is always at a more advanced growth stage than the tillers throughout the growing period. Due to this, the most susceptible stalks to the recent cold are those main stems. This begs the question, just how important are the main stems to final yield?

I had hoped this would be a simple search through scientific journals to an easy answer. Unfortunately, for hard or soft red winter wheat grown in the southern plains, that is just not the case. If we consider durum wheat grown in the Mediterranean region, spring wheat grown in the northern plains, or Australian white wheat there is data available. While not a one-to-one comparison, the data should be at least somewhat applicable.

From the Mediterranean region study (Elhani, Martos, Rharrabti, et. al.), they researched wheat in ideal conditions (irrigated) verses a more stressful environment. Under ideal conditions, their research showed that the main stem contributed 68% of the yield and under a more stressful environment, it contributed 32%.

The spring wheat study (Otteson, Mergoum, Ransom, and Schatz) found that the main stem contributed approximately 55% of the main yield, the

first tiller around 32%, the second tiller 11%, and all of the remaining tillers only 2%. The Australian white wheat study (Metho, Hammes, and Beyers) found that the main stem contributed 69% of the yield, the first tiller 25%, the second tiller 4%, and the remaining tillers only 2%.

Do these studies prove we have lost half or even more of our yield potential? A pessimist may say so, but we must consider the growth and development of the wheat once again. If the main stem is healthy, the plant focuses its photosynthetic product to that head. However, if it is damaged, the plant would then reprioritize its efforts into the surviving heads.

How much damage has occurred is a completely different question. There has been some yield lost, but there is still potential for at least satisfactory yield this summer. That is, at least, until Lucy (Mother Nature) pulls the football once again.

For more information or if you have any questions, please call me at the office (620) 724-8233, or e-mail me at jcoltrain@ksu.edu, or visit the Wildcat Extension District website at www.wildcatdistrict.ksu.edu.

**Tell them
you saw it in
Grass & Grain!**

Grass & Grain Weather Report

Seven Day Forecast

WEDNESDAY
Mostly Sunny
High: 64 Low: 45

THURSDAY
Partly Cloudy
High: 69 Low: 50

FRIDAY
Sunny
High: 81 Low: 57

SATURDAY
Sunny
High: 83 Low: 64

SUNDAY
Partly Cloudy
High: 77 Low: 58

MONDAY
Mostly Cloudy
High: 72 Low: 53

TUESDAY
Few Showers
High: 81 Low: 65

In-Depth Local Forecast

Today we will see mostly sunny skies, high of 64°, humidity of 36%. Northwest wind 10 mph. The record high for today is 96° set in 1989. Expect partly cloudy skies tonight, overnight low of 45°. Southwest wind 5 to 8 mph. The wind chill for tonight could reach 43°.

Last Week's Almanac

Date	Hi/Lo	Normals	Precip
4/13	82/43	68/42	0.00"
4/14	43/29	68/43	0.00"
4/15	37/27	69/43	0.00"
4/16	58/33	69/43	0.00"
4/17	76/39	70/44	0.00"
4/18	52/34	70/45	0.00"
4/19	60/32	70/45	0.00"
Rainfall			0.00"
Normal rainfall			0.77"
Departure			-0.77"
Average temp			46.1°
Average normal			56.4°
Departure			-10.3°

This Week's Sun & Moon Chart

	Full	Day	Sunrise	Sunset	Moonrise	Moonset	
		Wednesday	6:35 a.m.	8:13 p.m.	3:47 p.m.	4:28 a.m.	New 5/15
		Thursday	6:34 a.m.	8:14 p.m.	4:53 p.m.	5:03 a.m.	
		Friday	6:33 a.m.	8:15 p.m.	5:58 p.m.	5:35 a.m.	
		Saturday	6:32 a.m.	8:16 p.m.	7:01 p.m.	6:07 a.m.	
		Sunday	6:30 a.m.	8:17 p.m.	8:04 p.m.	6:39 a.m.	
		Monday	6:29 a.m.	8:18 p.m.	9:05 p.m.	7:12 a.m.	First 5/21
		Tuesday	6:28 a.m.	8:19 p.m.	10:04 p.m.	7:47 a.m.	

Local UV Index

0-2 4 5 6 7 8 9 10 11+

0-2: Low, 3-5: Moderate, 6-7: High, 8-10: Very High, 11+: Extreme Exposure

Weather History

April 25, 1988 - Thunderstorms racing at 65 mph produced large hail in Alabama and Georgia. Hail damage in Alabama was estimated at 50 million dollars, making it their worst weather disaster since Hurricane Frederick in 1979.

Growing Degree Days

Date	Degree Days	Date	Degree Days
4/13	12	4/17	7
4/14	0	4/18	0
4/15	0	4/19	0
4/16	0		

MANHATTAN

COMM. CO. INC.

CATTLE AUCTION EVERY FRIDAY

1-800-834-1029
Toll-Free

STARTING 10:00 A.M. ON WEIGH COWS
FOLLOWED BY STOCKER FEEDERS — 11:00 A.M.

OFFICE PHONE 785-776-4815 • OWNERS MERVIN SEXTON & JOHN CLINE

Our CONSIGNMENTS can now be viewed after 12 Noon on Mondays by going to www.grassandgrain.com & logging onto the online subscription

For our sale Friday, April 20, the bulk of the run was Fall calves and they were selling from steady to \$2 lower on the kind offered. Feeder weight steers and heifers were also finding a weaker trend with quality and condition being a deciding factor. Cull cows and bulls sold \$3 lower on a large offering.

STEER & BULL CALVES — 325-550 lbs

Olsburg	6 Cross	344@202.00
Winchester	8 blk	368@201.00
Leonardville	8 blk	386@198.00
Cedar Point	8 blk	388@198.00
Alma	10 blk	422@195.00
Olsburg	9 blk	441@191.00
Winchester	9 blk	447@187.00
Allen	10 blk	516@180.00
Leonardville	9 blk	501@178.00
Alma	23 blk	518@175.00
Westmoreland	7 blk	547@174.00
Olsburg	7 blk	527@173.00
Easton	10 blk	538@170.00
Leonardville	9 blk	540@170.00
Westmoreland	7 blk	532@162.50
Winchester	5 blk	485@162.50

STEERS & BULLS — 550-900 lbs

Goff	6 blk	586@174.00
Frankfort	8 blk	566@170.25
Allen	12 blk	620@169.00
Riley	8 blk	607@167.00
Manhattan	6 Char	572@165.00
Manhattan	14 Char	643@160.00
Mayetta	9 blk	565@159.00
Easton	6 blk	636@156.50
Randolph	5 blk	626@151.50
Alma	26 blk	613@154.50
Alma	5 blk	626@151.50
Mayetta	9 blk	661@148.50
Winchester	7 blk	602@145.75
Manhattanc	10 Char	733@145.00
Winchester	9 blk	667@141.00
Westmoreland	6 blk	680@133.50
Strong City	15 blk	849@133.00
Frankfort	54 blk	885@130.85
Soldier	6 Cross	710@123.50

HEIFER CALVES — 350-550 lbs

Leonardville	5 blk	366@167.00
Olburg	6 Cross	350@167.00
Olsburg	12 blk	450@162.00
Winchester	7 blk	349@160.00
Alma	8 blk	469@159.50
Cedar Point	8 blk	392@159.50
Leonardville	14 blk	431@159.00
Winchester	8 blk	440@159.00
Allen	8 blk	485@154.00
Manhattan	8 blk	489@152.00
Alma	7 blk	480@150.00
Frankfort	9 blk	525@150.00
Manhattan	5 blk	501@150.00
Allen	9 blk	546@148.00
Westmoreland	8 blk	549@142.00

HEIFERS — 550-975 lbs

Olsburg	6 blk	574@146.75
Goff	10 blk	640@146.00
Easton	6 blk	575@143.50
Dwight	7 Cross	567@143.00
Riley	31 blk	581@140.50
Mayetta	9 blk	637@139.00
Manhattan	12 blk	690@132.00
Pamona	5 Heref	652@130.00
Onaga	5 Char	764@129.00
Olsburg	5 blk	714@128.00
Riley	12 blk	726@126.50
Riley	22 blk	772@123.50
Riley	6 blk	725@122.50
Riley	10 blk	806@121.00
Strong City	5 blk	804@120.00
White City	6 Cross	967@118.50
Strong City	14 blk	856@118.25

BULLS — 1,275-2,300 lbs

Frankfort	1 blk	1280@94.00
Ramona	1 blk	2090@85.00
Wamego	1 blk	1970@85.00
Ramona	1 blk	1945@83.50
Leonardville	1 blk	2040@79.00
Alma	1 blk	2285@77.00
Alta Vista	1 blk	1455@75.00

COWS & HEIFERETTES — 975-1,975 lbs

Alma	1 blk	1035@99.00
Alma	1 bwf	1020@97.00
Longford	1 Heref	975@90.50
Alma	1 blk	1105@88.00
Onaga	1 blk	1200@80.00
Olsburg	1 blk	1180@82.00
Onaga	1 bwf	1740@65.00
Topeka	1 Cross	1590@63.50
Randolph	1 Char	1460@62.50
Randolph	1 blk	1390@61.50
Herington	1 Heref	1200@61.00
Alta Vista	1 blk	1165@61.00
Randolph	1 Cross	1375@61.00
Mayetta	1 blk	1455@60.50
Manhattan	1 blk	1955@60.00
Onaga	1 Heref	1625@60.00
Wamego	1 blk	1340@59.00
Dwight	1 blk	1060@58.50
Wamego	1 blk	1415@58.00
Randolph	1 blk	1235@58.00
Alma	1 blk	1545@58.00
Onaga	1 Heref	1270@58.00
Dwight	1 bwf	1170@57.00
Manhattan	1 Heref	1590@57.00
Alma	1 blk	1250@56.50
Onaga	1 Heref	1385@56.00
Wamego	1 blk	1345@55.00

1ST CALF HEIFER PAIRS

	AGE	
Gorham	15 rd Ang	2 @1950.00
Longford	5 blk	2 @1910.00
El Dorado	11 rd Ang	2 @1900.00
El Dorado	8 rd Ang	2 @1885.00

Gorham	6 rd Ang	2 @1850.00
Gorham	10 blk	2 @1775.00
Longford	10 blk	2 @1750.00
Gorham	5 blk	2 @1735.00
Gorham	5 blk	2 @1685.00
Gorham	6 blk	2 @1675.00
Gorham	5 blk	2 @1625.00

PAIRS

	AGE BRED	
Leonardville	2 blk 3-5	2 @1900.00
Baileyville	2 blk	3 @1675.00
Dwight	4 Heref	3 2-3 @1550.00

Harveyville	3 blk	2 @1475.00
Dwight	2 Cross	7 2-3 @1400.00

BRED COWS

	AGE BRED	
Frankfort	1 bwf	5 8 @1300.00
Alma	1 blk	2 8 @1250.00
Herington	2 mix	2 8 @1250.00
Alma	1 blk	6 7 @1200.00
Paxico	1 Cross	3 8 @1200.00
Onaga	2 Char	2-3 9 @1180.00
Wamego	1 blk	3 6 @1135.00
Dwight	2 blk	5-6 6-7 @1110.00

SPECIAL STOCK COW & BREEDING BULL SALE, MAY 2 STARTING 11:00 AM

1st CALF HFR PAIRS:

- 8 big fancy Angus 1st calf hfrs w/ 30 day old Angus calves by side.
- 10 blk 1st calf hfrs w/ 30 day calves by side.
- 8 big fancy Angus 1st calf hfrs w/ 30 day Angus calves by side.
- 10 blk 1st calf hfrs w/ 30 day calves by side.
- 10 red Angus 1st calf OCV hfrs w/ 30-60 day red Angus calves by side, all shots, grass ready.
- 5 Angus 1st calf OCV hfrs w/Al Angus sired Feb. calves by side, Grass ready.
- 4 Angus 1st calf hfrs w/ Calves by side.

COMPLETE DISPERSAL OF 10 HOME RAISED CHAR COWS, RUNNING AGES, W/ MARCH CHAR CALVES BY SIDE.

BULLS:

- 2 horned Hereford bulls, 2 yrs
- 1 Percentage Gelve. hfr bull, 14 months.
- 1 Balancer hfr bull, 18 months.
- 8 Angus bulls, 14-18 mo., Al sired by KG Solution, Baldrige Willie, & Conneally Balance

BRED 1st CALF HFRS:

- 1 gentle bwf & 1 Angus Fall bred 1st calf OCV hfrs, bred to Final Answer Angus bulls for Oct. calves.
- 3 blk, bwf & Herf Fall bred OCV 1st calf hfrs, bred to Dalebanks Angus bull for Oct.-Nov. calves.

PAIRS:

- 15 blk Fall calving cows, 7-8 yrs, bred SimmAngus for Sept./Oct. calves.

EARLY CONSIGNMENTS FOR MAY 4

- 65 choice reputation red Angus strs & hfrs, red Angus source tags, weaned 45 days, 3 complete rd shots, 500-650 lbs

VISIT US ON THE WEB FOR DAILY CONSIGNMENT UPDATES AT WWW.MCCLIVESTOCK.COM

FIELD REPRESENTATIVES									
JOHN CLINE ONAGA 785-889-4775 Cell: 785-532-8381	SAM GRIFFIN BURNS 620-726-5877 Cell: 620-382-7502	BRENT MILLER ALMA 785-765-3467 Cell: 785-587-7824	ALAN HUBBARD OLSBURG 785-468-3552 Cell: 785-410-5011	MERVIN SEXTON MANHATTAN Cell: 785-770-2622 Home: 785-537-7295	BILL RAINE MAPLE HILL 785-256-4439 Cell: 785-633-4610	TOM TAUL MANHATTAN 785-537-0036 Cell: 785-556-1422	JEFF BROOKS BEATTIE 785-353-2263 Cell: 785-562-6807	BRYCE HECK LINN 785-348-5448 Cell: 785-447-0456	DAN COATES BALDWIN 785-418-4524

Kansas Hay Market Report

Hay market activity, both movement and trade, is light due to limited supply. Demand remains very good for both grinding alfalfa and grass hay. Prices for all hay types stayed mostly steady. Mother Nature just cannot seem to make up her mind as to whether she wants it to be spring or winter. According to the U.S. Drought Monitor, Kansas saw another week of growing deficits with the borders of all drought categories extending slightly northward reflecting the severe conditions. The abnormally dry (D0) category remained at 97 pct, moderate drought (D1) increased to 83 pct, severe drought (D2) increased to 60 pct, extreme drought (D3) increased to 27 pct and exceptional drought (D4) increased to 7 pct. If you have hay for sale, and/or need hay here in Kansas, use the services of the Internet Hay Exchange: www.hay-exchange.com/ks.php.

Southwest Kansas

Dairy alfalfa, grass hay, grinding alfalfa, ground/delivered steady; movement slow. Alfalfa: horse, small squares 240.00-250.00. Dairy, .95-1.00/point RFV, Supreme 175.00-185.00, Premium 160.00-170.00, Good 140.00-150.00. Stock or Dry Cow alfalfa, 175.00-185.00. Fair/Good grinding alfalfa, 140.00-150.00 with an instance at 160.00. Ground and delivered locally to feedlots and dairies, 160.00-185.00 with an instance at 200.00. Grass hay: Blue-stem large squares 80.00-90.00, large rounds 70.00-80.00. The week of 4/08-4/14, 8,260T of grinding alfalfa and 1,508T of dairy alfalfa were delivered. Sorghum ground and delivered 105.00-115.00; wheat hay ground and delivered 125.00-135.00; Cornstalks: large rounds 55.00-65.00,

ground and delivered 70.00-80.00. The average paid by feedlots on April 1 for alfalfa ground and delivered was 156.70, up 5.42 from last month, usage was 623T/day, down 19 pct, and total usage was 19,324T.

South Central Kansas

Dairy alfalfa, alfalfa pellets, stock cow, grinding alfalfa, ground/delivered, grass hay steady; movement slow. Alfalfa: horse, small squares 190.00-200.00. Dairy, .95-1.00/point RFV, Supreme 175.00-185.00, Premium 160.00-170.00, Good 140.00-150.00. Stock cow alfalfa, 135.00-145.00 delivered. Fair/Good grinding alfalfa, 120.00-140.00 with instances at 150.00. Ground and delivered locally to feedlots 165.00-175.00 with an instance at 185.00. Alfalfa pellets: Sun Cured 15 pct protein 180.00-195.00 with an instance at 200.00, 17 pct protein 180.00-200.00 with an instance at 205.00, Dehydrated 17 pct 225.00-235.00. The week of 4/08-4/14, 4,779T of grinding alfalfa and 518T of dairy alfalfa were delivered. Grass hay: bluestem, large squares 85.00-95.00, large rounds 75.00-85.00; Brome, large squares 130.00 delivered; Oat hay, large squares 85.00-95.00, Sudan large rounds 75.00-80.00. Cornstalks: large rounds 60.00-65.00, cornstalks ground and delivered 70.00-80.00, Straw large rounds 70.00-75.00. The average paid by feedlots on April 1 for alfalfa ground and delivered was 144.13, down 0.75 from last month, usage was 276T/day, down 5 pct, and total usage was 8,570.

Southeast Kansas

Dairy alfalfa, horse/goat, stock cow alfalfa, grinding alfalfa, ground/delivered, grass hay steady; movement slow. Alfalfa: horse or goat, 215.00-225.00. Dairy .90-1.00/point RFV. Stock cow alfalfa 140.00-150.00. Fair/Good grinding alfalfa, none reported. Ground and delivered, none reported. Grass hay: bluestem, premium small squares 110.00-120.00. Good, mid and large squares 90.00-105.00 with an instance at 120.00, large rounds 70.00-80.00 with an instance at 90.00-100.00. Brome: small squares 6.00-8.00/bale. Good, mid and large squares 100.00-115.00

with an instance at 120.00, large rounds none reported. Oat hay, large rounds 85.00-95.00, with an instance at 130.00 delivered. The week of 4/08-4/14, 1,752T of grass hay were delivered. Straw, mid and large squares 50.00-60.00. Mulch, large rounds 50.00-55.00.

Northwest Kansas

Dairy alfalfa, grinding alfalfa and ground/delivered steady; movement slow. Alfalfa: small squares, 6.00-7.00/bale. Horse or goat, 180.00-200.00. Dairy, Premium/Supreme .90-.95/point RFV. Stock cow, fair/good 110.00-120.00. Fair/Good grinding alfalfa, 100.00-115.00. Ground and delivered locally to feedlots and dairies, 120.00-130.00. Cornstalks, large rounds 80.00-85.00.

North Central-Northeast Kansas

Dairy alfalfa, grass hay, grinding alfalfa, ground/delivered steady; movement slow. Alfalfa: horse, premium small squares 9.00-10.00/bale, good small squares 8.00/bale. Dairy .95-1.05/point RFV, Supreme 175.00-195.00, Premium 170.00-185.00, Good 150.00-170.00. Stock Cow, good 120.00-125.00. Fair/Good, grinding alfalfa, 105.00-115.00 with an instance at 150.00. Ground and delivered, 140.00-150.00. Grass hay: bluestem, small squares 5.00-6.00/bale, large squares 105.00-115.00, large rounds 90.00-100.00. Brome: Good, small squares 6.00-8.00/bale, mid and large squares, 125.00-130.00, good large rounds 85.00-95.00. Sudan large rounds 60.00-70.00; Straw: small squares, 4.00-5.00/bale, large squares 75.00-85.00, large rounds 65.00-75.00.

****Prices are dollars per ton and FOB unless otherwise noted. Dairy alfalfa prices are for mid and large squares unless otherwise noted. Horse hay is in small squares unless otherwise noted. Prices are from the most recent sales.**

*CWF Certified Weed Free

*RFV calculated using the Wis/Minn formula.

****TDN calculated using the Western formula. Quantitative factors are approximate, and many factors can affect feeding value. Values based on 100% dry matter (TDN showing both 100% & 90%).**

Guidelines are to be used with visual appearance and intent of sale (usage).

Source: Kansas Department of Agriculture - Manhattan, Kansas Kim Nettleton 785-564-6709

Posted to the Internet: www.ams.usda.gov/mnreports/DC_GR310.txt

Grain industry awards more than \$25,000 in scholarships

Kansas Grain and Feed Association's (KGFA) scholarship committee met in Wichita at the association's 122nd Annual Meeting in early April and

awarded more than \$25,000 in scholarships to Kansas high school graduating seniors for the 2018-19 academic year.

The scholarship committee, comprised of KGFA's membership, received 132 applications and awarded 19 students scholarships to assist in advancing their academic endeavors.

"We are very proud of the KGFA scholarship program that has helped so many people throughout the state for so many years," KGFA's president and CEO Ron Seeber said. "The association, its board and members take tremendous pride each spring investing in students and helping them pursue their education."

The winners of 2018-19 KGFA scholarships are listed below with their hometown.

Dub and Inez Johnson Memorial Scholarship - \$500 Total
Rilee Jordan - Galesburg
KGFA Scholarships - \$1,500 Total
Blake Bouchee - Damar
Justin Brown - Caldwell
Sage Collins - Chanute
Nathan Enns - Inman
Emily Glenn - Holcomb
Jack Govert - Cunningham
Shyanne Jones - Mound Valley
Hannah Klusman - Ford
Logan Lix - Wright
Ashton McGinn - Sedgewick
Victoria Reed - Fort Scott
Kacie Timmons - Smith Center
Jordan Vandervort - Wakarusa
Brittney Walt - Collyer
KGFA Scholarships - \$1,000 Total
Evan Bott - Palmer
Brody Ditto - Culver
Dylan Loos - Udall
Jamie Rock - Hope

CUSTOM CUT METAL AUCTION

SATURDAY, MAY 5, 2018 — 9:30 AM

AUCTION LOCATION: 8989 GREEN VALLEY DRIVE — MANHATTAN, KANSAS

Custom Cut Metal & its owners have served the community for many years and will be shutting their doors. This auction's purpose will be to liquidate their remaining inventory.

Here is an overview of the types of materials that we will be selling.

MATERIAL TYPES	SHAPES	OTHER ITEMS
• Stainless Steel	• Rod/shaft	• Square tubing
• Mild Steel	• Angle iron	• Rectangular tubing
• Aluminum	• Flat Steel	• Round tubing
• Brass	• Expanded metal	• Channel iron
• Copper (small amount)	• Sheet metal	• Beams



Now Accepting Credit Cards for personal property (with convenience fee)

OTHER ITEMS INCLUDING • Misc Office furniture • Antique drill presses • Misc supplies & tools

SELLER: CUSTOM CUT METAL

Watch Next Week's Grass & Grain for a more detailed list of inventory & other items being sold! Check us out on Facebook & Online for more info www.kscrossroads.com • www.facebook.com/KSCrossroadsauctions

Crossroads Real Estate & Auction
ANDREW SYLVESTER, Auctioneer, 785-456-4352
BILL DISBERGER, Auction Coordinator, 620-921-5642
TERRI HOLLENBECK, Broker/Owner, 785-223-2947

AUCTION

SATURDAY, APRIL 28, 2018 — 9:00 AM

3500 NW ROCHESTER ROAD — TOPEKA, KANSAS

Approximately 600 board feet Walnut lumber; misc. Oak, Cherry & Mahogany; Grizzly mini metal lathe 7X12, 3/4HP; Speedway 7X12 metal lathe with attachments; Speedway mini vertical milling machine; 2 handmade work benches (Walnut & Maple) with vises-very nice; Delta portable 10" table saw; Delta radial arm saw; 12 ton hydraulic press; Delta 43-120 shaper with bits; DeWalt 12" radial arm saw; Acetylene torch set with bottles & cart; Grizzly 20" planer; Grizzly 18" open-end drum sander; Powermatic PM45 wood lathe; Woodmaster 12" drum sander; Craftsman (Bell saw) planer molder 12" with 5HP motor; 10" Ryobi planer; 16" Rockwell drill press; B&D power washer; 2 Delta 4" jointers; Delta 12" variable wood lathe; Delta 1/2HP dust collector; Cincinnati 1 1/2HP dust collector; Makita 12" concrete cut-off saw; Makita 9" side grinder; Makita 12" cut-off saw; 4 remote start Lone Ranger stud collectors (2-220 & 2-110); Grizzly G1010 metal band saw; Delta unisaw 52" with outfeed table & 2 unfences; Milwaukee die grinder; 4" wet Diamond tile saw; Jet 8" bench grinder; Craftsman 1 & 2HP air compressors; Grizzly air compressor; Grizzly & Porta Cable electric shears; Industrial 12 gauge shear; 2 Shop Fox adjustable roller tables; porta cable cut-out tool; 10 1/2 siding brake (old style); vinyl siding hand tools; Grizzly combination sander; Grizzly oscillating spindle sander; shop vac; Craftsman air tank; shelving; Grizzly knife buffer/sander; Grizzly grinder/buffer; Grizzly 16"band saw; Delta 10" radial arm saw; Fein multi master tool in case & one in bag; double door sandblasting cabinet; Milwaukee heavy duty hole hawg with bits; 2 B&D industrial Macho 3 rotary hammer drills; Hobart Handler 140 mig welder, cart, bottle & auto shade helmet; Sureweld 225 Arc welder; 2 Yankee workshop work benches; 2 Milwaukee sheetrock screw guns; Freud biscuit jointer; Delta 12" portable planer with lots blades; 6-8-10" DMT diamond sharpeners (fine, medium, coarse & extra coarse); 2 Grizzly combination sanders with carts; Rim Line & Craftsman chest-on-chest toolboxes; woodworking clamp carts; Porta cable 4 1/2" trim saw; Porta cable right angle drill; Rockwell small electric hand planer; Drill Doctor with diamond stones; Werner 4', 6' & 8' fibre glass stepladders; Werner aluminum 16', 24', 28' & 32' extension ladders; Werner folding ladder; 2 sets Stinson aluminum ladder jacks; Frein Turbo vacuum; Grizzly mitre trimmer; Klein tools; Grizzly low speed wet grinder; Bosch circular saw; Milwaukee 1/2" hole shooter; Milwaukee right angle drill; Makita 4" side grinder; DeWalt 4 1/2" side grinder; lots grinding wheels; staple guns; toolboxes; 2 floor jacks; Milwaukee sawzall kit; Ram set power actuating nailer; HVLP electric spray gun kit; lots router bits; Inca jig pro fence; Inca jig Ultra precision woodworking system; Industrial concrete sprayer; 2-wheel dolly's; 5 outfeed stands with rollers; Delta Deluxe saw buck frame & trim; Craftsman one HP air compressor; **motorcycle hydraulic lift table**; small motorcycle lift; Grizzly combination sander; one ton engine hoist; air sander; air muffler tools; 21pc set 1/4" drive socket set; approximately 50 boxes of assorted wrenches-sockets-tools; 3 high volume low pressure spray guns; nails; screws; RBI router shop with Bosch router; laminating iron for edge branding; DeWalt hammer drill; Bosch circular saw; Baby DeWalt radial arm saw; Speedmatic porta cable circular saw; 2 router workshop tables; Bosch 5" orbital sander; DeWalt mitre saw; Norton water stones 8"X3" 1000 & 220 and 8"X3" 8000 & 4000; Norton water stones flattening stone; 6 levels 24"-72"; sheetrock tools; 6' straight edge; Dayton wet/dry vac with stainless base; 8", 10", 12" saw blades; Leigh dovetail jig; tap & die sets; air nailers & nails; air staplers with staples; 76pc Craftsman tap & die set; Lovelock shop vac; lots hand saws.

John Deere 755 lawn/utility tractor with 70A loader with tool bar & 60" mower (diesel); Kubota B670 3pt backhoe; 5'X10' trailer with side walls & ramp; 3pt 5' box scraper; 3pt 5' blade; 3pt boom lift; lawn sprayer 25 gallon; 3pt; 3pt carryall; 2 factory carts; John Deere 450V chain saw; Homelite multi-purpose concrete saw; Stihl Fs66 weed eater; John Deere 255 portable generator; 8' telescoping pole saw; 2 Ryobi weed eaters; Poulan 20" chain saw; welding cart; IH heavy duty battery charger booster; 3 hydronic pumps; Ridgid bender; 3-leg pipe vise; various welding clamps; small utility pump; Ox yoke; antique paint shaker; hedge trimmers; Triblock combination 3 water stone with tray; 12" disc sander; shop vac; 17 Bessey clamps; 4 jet clamps; 8 Gross Stabil clamps; pipe clamps; 7

clamp N tool guide; Elu router; DeWalt 625 router; Veritas jointer blade sharpener; Veritas MKII honing guide with skew guide; Pinnacle Precision 32" T-square; 12 Irwin quirk grip clamps; 3 drill vises; Forster bits 1/4" to 3"; Milwaukee self-feed auger kit-7 sizes; 3 B&D Workmate benches; work bench with tail & end vises; Delta 15" drill press; Bosch colt router; Bosch 16176 router; 4 Ryobi 3HP routers; Hitachi 3HP router; 4 Porter cable routers; Delta hollow chisel mortise with chisels; Woodline easy link routing system; Bosch right angle drill with attachments & case; DeWalt hammer drill; DeWalt 14V sawzall & flash-light; Kreg pocket hole jig with screws, plugs & clamps; Dustless wet/dry vacuums; 3 library card files; Inca cut-off sled 2 Bosch impactors; sets of Dado saw blades; Mifer wood chisels; German wood chisels; Bahco Swedish wood chisels; Freue wood chisels; lots saw blades; Grizzly Razor sharp system with grinder; Grizzly buffing systems; Delta circle cutting attachment for band saw; Grizzly 2HP upgrade filter dust collector; Craftsman & Grizzly oscillating spindle sander table top with disc; 2 Grizzly mini wood/pen lathes; portable forced air heater with thermostat 150,000BTU; 5 hydraulic lift carts; 7" siding sander; 6 Diamond concrete cut-off blades; Arbor press; 2 boxes masonry spline drill bits; 3 Columbian woodworking vises; Craftsman 2-cycle leaf blower with gutter attachment; Toro electric leaf blower; Porta cable 5" side grinder with mortar blades; Shop Fox 24" box hand brake; Grizzly 7 1/2" mini shear brake; Grizzly G8749 drum & flap sander; Grizzly 10" grinder; 12.2 & 14.2 & MC cable wiring; masonry hole saw carbide tip bits (1 3/8-3 3/16); Granite 8"X10" flattening stone; angel gauge blocks; Machinist table with granite block; small craftsman machinist chest; Campbell Hausfeld airless sprayer; Blue Boy 2HP dust collector; American saw mill machine Co. 8", 3 phase jointer with single phase inverter; Sioux 9" side grinder/buffer; 3 kerosene heaters; 2 aluminum sheetrock trussels; wheelbarrow; 7 sections Commercial adjustable pallet shelving; cement sliding guillotine; antique license plates; pipe cutter; pipe threader 3/8" to 3"; 20 file cabinets; 85,000BTU used furnace; miscellaneous copper fittings; car top carrier; camping porta-potty; **LOTS MORE!**

NOTE: A very clean selection of quality tools, many duplicate items!

DARREL & SUSAN PENDERGAST

GANNON REAL ESTATE & AUCTIONS

VERN GANNON, AUCTIONEER

785-770-0066 • MANHATTAN, KANSAS • 785-539-2316

www.gannonauctions.com

GRASS & GRAIN

Looking for an auction bill, hay prices or farm news? Subscribe to:

GRASS & GRAIN

Call 785-539-7558 or visit us ONLINE at www.grassandgrain.com

CHASE COUNTY GRASSLAND AUCTION

2,695 ACRES! COTTONWOOD FALLS, KS

(Located approximately 8.6 miles SW of town)

THURSDAY, MAY 17, 2018 — 2:00 PM

AUCTION LOCATION: Cottonwood Falls Community Bldg., Swope Park — COTTONWOOD FALLS, KANSAS

Property of WHISKEY CHARLIE, LLC

Rolling Flint Hills with fantastic range views & vistas. Pens, Good Ponds, 3 Spring tanks, Holmes Creek w/deer & turkey. This is all wrapped up in two pastures with above average fence. Immediate possession to qualified buyer.

GIVE US A CALL, YOU MUST SEE IT TO APPRECIATE IT!

More complete listing coming next week.

Griffin & Auction Real Estate Service LC
RICK GRIFFIN Broker/Auctioneer Cell: 620-343-0473
CHUCK MAGGARD Sales/Auctioneer Cell: 620-794-8824
305 Broadway, Cottonwood Falls, KS 66845
620-273-6421 • Fax: 620-273-6425 • Toll Free: 1-866-273-6421
In Office: Nancy Griffin, Heidi Maggard
Email: griffin123@gmail.com • www.GriffinRealEstateAuction.com

PERSONAL PROPERTY AUCTION

SATURDAY, APRIL 28, 2018 — 10:00 AM

2323 N. JACKSON — JUNCTION CITY, KS 66441 • LUNCH!

COINS: Sev. Early & Late 1800s & 1900s Morgan Dollars, sev. Early 1900s Peace Dollars, sev. 1800s Indian Head Pennies, 1884-1902 V Nickels, 1906-1912 V Nickels, sev. 1800s Large Cent, sev. 1800s Two Cent pieces, roll of Buffalo Nickels, roll of V Nickels, 1909-1941 Wheat Pennies, 1913-1938 Buffalo Nickels, 1877-1890 Seated Dimes. "For a complete coin list contact the office with your email address"

FURNITURE & APPLIANCES. COLLECTIBLES: Vintage Kodak dark room safelight lamp; antique Kodak 2C Junior folding camera, vintage marbles, Coca Cola bear & elephant collection (plush), vintage Coca Cola cups, Old Coke & Xmas Coke ads, Snowbabies, Precious Moments, glass adv. ashtrays, vintage Barbie dolls (NIB), Phaltzgraff Winterberry dish, vintage Faris Picnic Jug, 1953 Webster Dictionary, Lion King figures, German Bavarian Mountain House music box, sev. posters inc.: Johnny Cash, Ringling Barnum Circus, Yellow Submarine & more; cast iron items; Ned Newell "Waiting for Spring" print. **TOOLS & MISC.:** Thor elec. Champion power drill, vintage Skil sander, 1950s TV repair manuals, vintage radios, Daisy BB gun, Power Master .177 cal BB gun, Virtual Reality Viewer II, 1995 Micro Game of America, Starwars, pinball; & MUCH MORE!

SMITH & OTHERS

Terms: Cash, Check or Credit Card. NRFA. Subject to 5% Buyers Premium

JAY E. BROWN, Auctioneer, 785-762-2266 • C: 785-223-7555
GREG HALLGREN, 785-499-5376

E-mail: jbrown@ksbroadband.net
KSALLink.com • KansasAuctions.net

BROWN
2323 North Jackson
Real Estate & Auction Service LLC
Junction City, KS

FARM for SALE!

124.5 ACRES +/- KAW VALLEY

BOTTOM GROUND SHAWNEE Co. KS!

000 MAPLE HILL RD SALE PRICE: \$632,500.00

124.5 Acres +/- Kaw River Bottom Ground between the city of Maple Hill & Rossville, Kansas.

- * 65 Acres +/- Irrigated tillable crop ground features Reinke Pivot irrigation system and newer John Deere Engine
- * 15 Acres +/- of tillable Dry land crop ground
- * 44 +/- of diversified timber perfect for hunting & fishing
- * Proven wildlife habitat that features bald eagles, deer, turkey, and flatheads.
- * Easy access to the farm along the paved Maple Hill Road

Also Available SUNFLOWER MLS # 198701: 177.5 +/- ACRES for \$1,037,460

Property Listed Exclusively by:

The HESSE REAL ESTATE GROUP

Anne Hesse: 785 - 845 - 6617
Scott Hesse: 785 - 554 - 5440

email us: HesseRealEstateGroup@gmail.com

HAWKS REAL ESTATE PROFESSIONALS
1225 SW HARVEY ST. Topeka KS 66604
785-783-8338 www.HawksRealEstatePros.com

Linn Post & Pipe’s latest corral offers affordability and flexibility

Linn Post & Pipe is thrilled to offer customers another affordable, convenient corral option. The new Bulldog Wrangler Portable Corral is a smaller, more affordable corral that can be used on its own or in tandem with any other portable corral. Holding up to 60 head of cattle, the Bulldog Corral

is easy to tow, featuring 9-14’ panels and a large bow gate to create a two-pen set up. The corral features the same easy-to-use hydraulic lift system as the Wrangler Portable Corrals, making it easy to catch, sort and load cattle in the pasture or out on stalks. The Bulldog Corral stands out from the pack not only

because of its fantastic price point, but also its ability to be easily setup by one person. Plus, there are options to add panels, carry along panels of your own, and a choice of several different styles of head gates.

“We saw there was a need for smaller producers to have something to

better fit their needs,” said Kyle Peters, president of Linn Post & Pipe Supply. “Our team has been working really hard to provide a superior product for our customers that wasn’t available to them before.” This corral can serve as a portable calving pen or a working pen to doctor animals, saving you and your

operation time and stress. For more information about the Bulldog Corral, contact Linn Post & Pipe at 800-526-0993, or learn more at linnpost.com.

Linn Post & Pipe, located in Linn, has been building the best in cattle and livestock equipment, as well as continuous fencing for over 43 years. Found-

ed by Emil Peters in 1974, Linn Post & Pipe started with continuous fencing, and has been adding new livestock equipment over the years. The Wrangler Portable Corral, for example, is the best in corrals with multiple configurations and options that can be tailored to the customers needs.

Bovines online: Farmers are using AI to help monitor cows

(AP) – Is the world ready for cows armed with artificial intelligence?

No time to ruminate on that because the moment has arrived, thanks to a Dutch company that has married two technologies – motion sensors and AI – with the aim of bringing the baryard into the 21st century.

The company, Connecterra, has brought its IDA system, or “The Intelligent Dairy Farmer’s Assistant,” to the United States after having piloted it in Europe for several years.

IDA uses a motion-sensing device attached to a cow’s neck to transmit its movements to a program driven by AI. The sensor data, when aligned repeatedly with real-world behavior, eventually allows IDA to tell from data alone when a cow is chewing cud, lying down, walking, drinking or eating.

Those indicators can predict whether a particular cow is ill, has become less productive, or is ready to breed – alerting

the farmer to changes in behavior that might otherwise be easily missed.

“It would just be impossible for us to keep up with every animal on an individual basis,” says Richard Watson, one of the first four U.S. farmers to use IDA since it launched commercially in December.

Watson, who owns the Seven Oaks Dairy in Waynesboro, Georgia, says having a computer identify which cows in his 2,000-head herd need attention could help improve farm productivity as much as 10 percent, which would mean hundreds of thousands of dollars to his family.

“If we can prove out that these advantages exist from using this technology... I think adoption of IDA across a broad range of farming systems, particularly large farming systems, would be a no-brainer,” Watson says.

Dairy farming is just one industry benefiting from AI, which is being applied in fields as diverse as journalism, man-

ufacturing and self-driving cars. In agriculture, AI is being developed to estimate crop health using drone footage and parse out weed killer between rows of cotton.

Yasir Khokhar, the former Microsoft employee who is the founder and CEO of Connecterra, said the inspiration for the idea came after living on a dairy farm south of Amsterdam.

“It turns out the technology farmers use is really outdated in many respects,” he says. “What does exist is very cumbersome to use, yet agriculture is one of those areas that desperately needs technology.”

Underlying IDA is Google’s open-source TensorFlow programming framework, which has helped spread AI to many disciplines. It’s a language built on top of the commonly used Python code that helps connect data from text, images, audio or sensors to neural networks – the algorithms that help computers learn. The language has

been downloaded millions of times and has about 1,400 people contributing code, only 400 of whom work at Google, according to product manager Sandeep Gupta.

He says TensorFlow can be used by people with only high-school level math and some programming skills.

“We’re continuing this journey making it easier and easier to use,” Gupta says.

TensorFlow has been used to do everything from helping NASA scientists find planets using the Kepler telescope, to assisting a tribe in the Amazon detect the sounds of illegal deforestation, according to Google spokesman Justin Burr.

Google hopes users adapt the open-source code to discover new applications that the company could someday use in its own business.

Even without AI, sensors are helping farmers keep tabs on their herds.

Mary Mackinson Faber, a fifth-generation farmer at the Mackinson

GENETRUST announces results of Easy Access Online Bull Auction

A unique format and a quality set of bulls met February 19-20th as the GENETRUST partners presented a new venue for their customer’s herd sire needs. Hosted by DVAuction.com, this online-only bull sale provided buyers two days to view and bid on the bulls prior to the live auction closeout Tuesday, February 20th at 7 p.m. Wildly popular and widely accepted, these bulls sold to an aggressive battery of buyers, and by night’s end, 43 long yearling Brangus & Ultrablack bulls grossed \$181,300 to average \$4216, with bulls scattering throughout the south, midwest and west.

Achieving high-selling honors for the evening was Lot 101, SF Three 404D10, a UB2 herd sire prospect from Schmidt Farms. Complete in his type with exceptional di-

mension throughout, his elite growth & muscle EPD profile propelled him to a \$9300 gavel price, in the hands of Mike Edgemon, 4E Ranch, McKinney, Texas. The second-high seller came in the form of a popular son of CB Final Cut, Lot 103 WAT Final Cut 924X-541D52 from Johnston Brangus. This November herd sire prospect matched breed leading growth projections with real world performance, scoring the nod from longtime GENETRUST customer Dr. Kristen Kastner of Odem, Texas at \$6600.

Following closely behind in sale order and price came Lot 107, WAT Three D 302A-535D76, again from Johnston Brangus. This son of the breed’s leading sire placed 7 traits in the top 35% and commanded a bid of \$6100 from repeat customer Johnny Marshall, Horatio, Ark.

The next offering of GENETRUST genetics will be May 7-8th through the Spring Fling online embryo auction, hosted by DVAuction.com. The power-packed fall sale season kicks off Nov 2-3 at Chimney Rock Cattle

Company in Concord, Ark. with 150 Brangus & Ultrablack bulls, 100 ELITE Registered Brangus & Ultrablack females and 300 commercial Brangus females. Two weeks later the GENETRUST crew lands in Jacksonville, Texas at Cavender’s Neches River Ranch to put forth 220 Brangus & Ultrablack bulls, 60 Charolais bulls and 400 commercial Brangus females. For more information on the nation’s leader of Brangus & Ultrablack genetics visit www.GENETRUSTBrangus.com.



GS1
GRAIN BINS
ALL SIZES AVAILABLE
Hopper Bins Available
FINANCING AVAILABLE
Harder AG PRODUCTS
West Highway 50
PEABODY, KANSAS 66866
Phone 620-983-2158
www.grainbinsusa.com



FARM EQUIPMENT

SATURDAY, MAY 5, 2018 — 10:00 AM
421 SOUTH 1200 ROAD — DWIGHT, KANSAS

VEHICLES, TRACTORS, & TRAILERS: 1979 IH 1086 dsl tractor w/ cab air & heat; 1952 M Farmall gas tractor NF; 1944 H Farmall gas tractor WF; 1949 8N Ford gas tractor w/3pt; 8N Ferguson gas tractor w/3pt; Farmall M, WF, 1 hyd. outlet; Allis-Chalmers WD tractor NF; 1969 Chevy C50 V8 4+2 spd w/16' bed & hoist; 1975 Ford pickup F350 V8 w/4 spd; 1978 Show Me 24x6 stock trailer-needs repair. **FARM MACHINERY & EQUIP.:** Heston 6550 self-propelled gas swather w/cab, 14' head; JD 2004 467 rd. baler twine tie only w/monitor; IHC 440 sq. bale wire tie w/Farmhand 8 bale accumulator; NH 12 whl rake, 3 yrs old (like new); Gehl 95 grinder/mixer w/screens (no scales); IHC 5x18 semi-mtd plow; IHC 4 row rotary hoe, fast hitch; IHC 4 row, row crop cult., fast hitch; IHC 4 row planter w/dry fert; JD 1240 4 row planter; JD 1250 6 row planter; JD 7000 6 row planter; JD #5 & #8 sickle mowers; IHC 4500 field cult.; IHC 55 11 shank chisel, fast hitch; 5' 3pt blade for 8N Ford tractor; cement mixer for 8N Ford tractor; 1979 Allis-Chalmers K2 combine-corn & soybean special; 20' AC 1300 field cult. **ANTIQUE EQUIP., FEEDING EQUIP. & MISC. PARTIAL LISTING. MUCH MORE!**

DON EISENHUT ESTATE & OTHERS
Terms: Cash or Check. NRFA. Lunch by the Ladies of the White City Christian Church

785-762-2266
JAY E. BROWN, Auctioneer,
785-223-7555
GREG HALLGREN, 785-499-5376

E-mail: jbrown@ksbroadband.net
KSALLink.com • KansasAuctions.net



BROWN
2323 North Jackson
Real Estate & Auction Service LLC
Junction City, KS



SATURDAY, MAY 5, 2018 — 10:00 AM
120 NW TIBBS ROAD — SILVER LAKE, KANSAS

(5 miles North of Silver Lake on Hoch Road to NW 62nd, West to Tibbs Road then South to Auction)

TRACTORS
1926 McCormick Deering 10-20 on steel; 1946 John Deere 'B'; 1949 Allis Chalmers WD; 1949 Case SC; 1951 8N Ford (new motor & brakes, front end rebuilt); 1946 Farmall 'M'-wide front end; all tractors reconditioned and restored. Set of steel wheels for F-20 or AC-WC.

TRUCK & MACHNERY
1972 GMC grain truck with hoist; Land Pride 1572 3pt 6' rotary mower; 12' Krause disk; 7' BMB pull type rotary mower; 8' 3pt blade; 3pt dirt scoop; 7'X12' wagon with sides; New Holland 260 rake with tandem hitch, new tires & gear box; 3-section harrow; JD 5', 3pt blade; 3pt box carrier; 2-row

MOWER
IH RZTL 42" zero turn lawn mower (purchased new in2017)-like new.

20'X16'X8' portable tent/paint room (pipe frame with tarp); concrete mixer; sliding closet doors; various building materials; front dolly wheel & hitch for New Holland rack; 2-15 gallon sprayers; backpack sprayer; 2 hand operated fuel pumps; pick-up toolbox; 37' & 18' hay elevator bunks; hundred plus used T-posts; floor drill press; ½" drill; extension & step ladders; Blacksmith anvil; heavy Railroad jack; power washer; diesel heater; chain saws; nail gun; airless paint sprayer; 2 jig saws;


3/8" metric sockets; assorted drill bits; 2 storage bins; 3 metal shelves; concrete hammer drill; belt sander; sandblaster; shop vac; Craftsman toolbox; sets of ¾" & ½" sockets.

2 bird baths; girl's bicycle; sewing set; cement blocks-edging-stepping stones; gas BBQ grill; night stands; quilting frames; old school desks; beds; mirrors; hose winder; garden miscellaneous; 2 large roasters; 25-cup coffee maker; electric stew pot; salad maker; popcorn popper; gold trimmed glasses; coolers; skillets; Holi-day decorations; Hallmark decorations; 2 punch bowls; party trays; scrap booking supplies; books; tapes; camera; household items.

Lunch by Grove 4-H

DUANE (HAP) & MARCIA ANDERSON

GANNON REAL ESTATE & AUCTIONS
VERN GANNON, AUCTIONEER
785-770-0066 • MANHATTAN, KANSAS • 785-539-2316
www.gannonauctions.com



HERINGTON LIVESTOCK COMMISSION CO.
CATTLE SALE EVERY WEDNESDAY: 11:30 AM
SELL HOGS 1ST & 3RD
WEDNESDAY OF EVERY MONTH
4/18/18

COWS

Cncl Grve, 1 blk	935@111.00
Manhattan, 1 blk	945@91.00
Tampa, 1 blk	1170@89.00
Burdick, 1 bwf	1090@86.00
Tampa, 1 blk	1050@86.00
Tampa, 1 red	1030@86.00
Cncl Grve, 1 blk	1280@80.00
Tampa, 1 bmf	1220@79.00
Tampa, 1 blk	1215@70.50
Wilsey, 1 blk	1130@70.00
Tampa, 1 blk	1155@70.00
Wilsey, 1 blk	1305@65.00
Wilsey, 1 blk	1325@64.00
Burdick, 1 blk	1185@61.50
Wilsey, 1 blk	1585@61.00
Wilsey, 1 blk	1335@60.50
Burdick, 1 red	1605@60.00
Herington, 1 blk	1600@60.00
Herington, 1 red	1565@60.00
Herington, 1 red	1625@60.00
Herington, 1 red	1565@60.00
Herington, 1 red	1695@60.00
Marion, 1 blk	1545@60.00
Marion, 1 blk	1875@60.00
Hillsboro, 1 blk	1560@60.00
Cncl Grve, 1 blk	1510@59.50
Herington, 1 red	1715@59.50
Herington, 1 blk	1435@59.00
Hope, 1 Hols	1500@59.00
Herington, 1 blk	1725@59.00
Herington, 1 red	1715@59.00
Herington, 1 red	1510@59.00
Herington, 1 red	1395@59.00

BULLS

Marion, 1 rwf	1555@59.00
Herington, 1 blk	1300@58.50
Herington, 1 blk	1450@58.50
Wilsey, 1 blk	1200@58.50
Herington, 1 red	1325@58.50

BREED COWS - BY THE HEAD
\$1,000

HEIFERS

Ctnnwd Falls, 4 blk	355@188.00
Ctnnwd Falls, 4 mix	448@166.00
Elmdale, 5 blk	434@165.00
Elmdale, 9 blk	579@148.50
Ctnnwd Falls, 14 mix	718@135.00
Elmdale, 5 blk	769@132.00
Cncl Grve, 3 blk	760@129.50
Sylvan Grove, 2 blk	828@121.00
Wilsey, 1 blk	2065@81.00
Cncl Grve, 1 blk	2440@78.00
Cncl Grve, 1 blk	1290@68.00
Burdick, 1 red	2530@65.00
Burdick, 1 rwf	1430@62.50

STEERS

Esckridge, 3 blk	468@175.00
Herington, 4 blk	508@170.00
Cncl Grve, 3 blk	508@169.00
Cncl Grve, 7 blk	557@165.00
Esckridge, 8 blk	605@165.00
Lost Springs, 7 blk	559@162.50
Cncl Grve, 14 blk	648@156.00
Herington, 3 blk	582@156.00
Cncl Grve, 4 blk	648@146.50
Herington, 6 red	666@145.75
Hope, 7 blk	698@140.00
Cncl Grve, 6 mix	582@140.00
Herington, 12 mix	799@134.00
Sylvan Grove, 4 red	664@130.00

Hope, 63 blk	898@127.50
Sylvan Grove, 2 mix	773@126.00
Ramona, 110 mix	1018@122.25
Woodbine, 58 blk	954@120.00
Florence, 52 mix	1016@117.35
Herington, 65 mix	900@113.75

CONSIGNMENTS FOR APRIL 25

- 120 mostly blk strs, 900 lbs
- 100 mostly blk strs & hfrs home raised, 2 rds shots, 3 weeks weaned, 500-600 lbs
- 23 mostly blk hfrs, home raised, long weaned, all shots 500-800 lbs
- 20 mostly blk hfrs home raised, long weaned, all shots 600-625 lbs
- 40 mostly blk hfrs, home raised, long weaned, all shots, replacement quality 875-900 lbs, consignor has bred for hfr development
- 95 mostly blk strs & hfrs, 2 rounds shots, home raised, long weaned 500-600 lbs

MORE CATTLE BY SALE TIME!

Our Consignments can now be viewed after 12 Noon on Mondays by going to www.grassandgrain.com & logging onto the online Subscription.

View Our Auction Live at LMAAUCTIONS.COM

KFRM AM 550, Every Wed., 8:00 a.m. • Barn Phone 785-258-2205
www.HeringtonLivestock.com

UNDER NEW MANAGEMENT: Tracy Ediger, 785-366-6645
Gary Suderman - 913-837-6785 • Dave Bures - 402-766-3743
Bob Kickhaefer, Cell - 785-258-4188

CLASSIFIEDS

CLASSIFIED AD DEADLINE IS 10:00 A.M. FRIDAY

Although complete name, address and phone number need not appear in your ad, we must have this information for our records.

Name: _____ Phone #: _____

Address: _____ City: _____ State: _____ Zip: _____

WRITE YOUR AD HERE



RATES AND DISCOUNTS

FIGURE YOUR COST HERE:

RATE: 65¢ a word.

Number of words: _____ @ 65¢ each

Cost for one week: _____

Multiply one-week cost times number of weeks you want ad to run.

Run ad _____ consecutive weeks.

Category: _____
Cost for _____ weeks: _____

DISCOUNTS: (with cash or credit card orders only)
deduct 10% if ad runs 2 or 3 weeks;
deduct 25% if ad runs 4 weeks.

Less discounts: _____

TOTAL: \$ _____

PAY WITH (PLEASE CIRCLE ONE):

CHECK MASTERCARD VISA DISCOVER

Card No. _____ Exp. Date _____

V-Code _____ (required) last 3 digits (see sample: 567) located on the back of your credit card on the signature panel.

Signature: _____

REMINDERS

- Please notify us of any errors at once. We cannot be responsible beyond the first insertion.
- **NO REFUNDS!**
- **BY PHONE:** Ads not accompanied by payment have \$1.00 billing charge added, and discounts are not available.



Four Ways To Place Your Ad

CALL: 877-537-3816 TOLL-FREE OR 785-539-7558

MAIL TO: AG PRESS, Box 1009, Manhattan, Kansas 66505

FAX: 785-539-2679

ONLINE: www.grassandgrain.com



CATTLE

100+ 3 YEAR OLD BLACK
pairs call 620-546-3404 for info.



15 mo. old Registered Angus Bulls for sale Private Treaty

Several sets of full brothers available. Vaccinated and fertility tested.

Hedgewood Prairie
Jason, Brooke, Jensen & Carson Woodworth Enterprise, KS
jwoodworth@tctelco.net
785-479-0403

FOR SALE: PUREBRED Angus bulls, 18 months-2yo. \$2,500. 785-263-6138

20 Performance Tested Sim-Angus bulls
Yearling to 2 year olds, black polled, semen checked, vaccinated, poured, very gentle.
Luin Berger
785-268-0647 Cell
785-363-2645 Home

3 BLACK POLLED CALVING ease Salers yearling bulls for sale Northeast KS. Semen tested. Bittersweet West 785-547-6781.

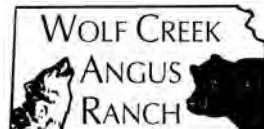
GLM Herefords



Polled Hereford and Hereford Bulls For Sale
Calving ease, growth, fleshing ability and Disposition all in one package. EPD's, performance information, fertility tested, guaranteed and free delivery.

Grant McKay
Marysville, KS
785-619-6086
Cell 308-470-1190
glmherefords.com
glmherefords@bluevalley.net

CATTLE



36 ANGUS BULLS
Available NOW by Private Treaty

Featured Sires:
Hoover Dam, Charlo, Payweight, and Thunder

Performance Tested; Fertility Tested; Fully Guaranteed;

Free Delivery in KS & NE. Free board until June 1, 2018
Volume Discounts

See Performance Data & Price List at:
www.WolfCreekAngus.com
LURAY, KANSAS
785-698-2225



33 big NICE Registered Angus Fall Bred Heifers - many AI sired & AI bred. Fall & Spring Registered Angus Bulls also available.
Call 785-979-2183 for more information

Alcove Cattle Co.

FOR SALE: Black Angus Bulls
14-15 months old
Breeding Sound
Good Disposition
Ready for Turn Out
Ken Duensing
Blue Rapids, KS
785-268-0898

HEREFORD BULLS



Good bulls with balanced EPD's, practical development, good disposition & eye appeal.

Oleen Cattle Co.

Falun, KS
GLENN CHUCK
785-668-2368 785-668-2454

CATTLE

ANGUS & SIMMENTAL-ANGUS BULLS



- Priced for the Commercial Cattleman
- Yearlings & 2 yr. olds with calving ease & growth
- Excellent Selection with Volume Discounts
- Performance Data Available
- Good Maternal Traits

Huninghake Angus
FRANKFORT, KS
Leo Huninghake
785-292-4537
Cell: 785-556-2648



ANGUS BULLS
Yearling to 2 year olds
Performance Data Available
Good Maternal Traits
Fertility Tested
Continuously raising Angus cattle for 67 years.

Vering Angus

Greg Vering
Marysville, KS
785-562-7164 Cell
785-562-3988 Home

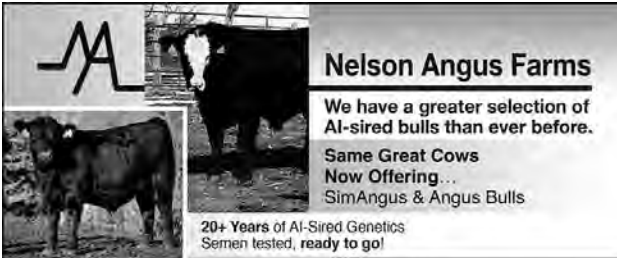


ANGUS BULLS
Calving Ease
Virgin 2 year old bulls
BRIAN KOSTER
TESCOTT, KS
785-488-6219
785-392-0345
bkangus.wix.com/bull



SENECA, KS
Private Treaty
18 Month Angus Bulls
AI Sired
Registered
Calving Ease
Gentle Disposition
P.I. Negative

David J. & Doris, Dustin & Daren Ronnebaum
785-294-1511



Nelson Angus Farms

We have a greater selection of AI-sired bulls than ever before.
Same Great Cows
Now Offering...
SimAngus & Angus Bulls

20+ Years of AI-Sired Genetics
Semen tested, ready to go!

You have to come see these bulls!



Nelson Angus Farms
Leonardville, Kansas
Mike: 785-595-8477
Alan: 785-770-7254
Raymond: 785-485-2378
www.nelsonangusfarms.com · nelsonangusfarms@hotmail.com

CATTLE



Angus Bulls For Sale

- Excellent selection of two-year-old Angus bulls available this Fall
- **Your Private Treaty Headquarters.** Over 20 years experience in Private Treaty & Sight-Unseen Sales.
- Our goal is to get the right bull to the right herd every time.
- Videos, data, and catalog available on our website
- It's time to come home to...**

HARMS PLAINVIEW RANCH

Mark & Kim Harms
2528 250th Street
Lincolnvile, KS 66858
Email: hprbulls@tctelco.net
www.HARMSRANCH.com

620-924-5544
Mark Cell:
620-382-6388
Kim's Cell:
620-382-5373

ANGUS & SIM-ANGUS
18-24 month old bulls available, easy fleshing, maternal focused, calving ease, good disposition.

TERRY OHLDE



785-747-6554
tohlde62@gmail.com

10 open Polled Hereford heifers, all OCV, prevac ready to breed. 10 pairs all worked ready to turn out 8 to 10 yrs old. Only reason selling is no grass & water and now a broken leg.

785-280-3461
Riffel's at Enterprise, KS

ANGUS COW AND CALF pairs, 2yo to older cows. February and March calves. Call Donald at Abilene, 785-479-0126

CATTLE



ANGUS BULLS

Yearlings & 2 year olds
Calving Ease
Growth & Carcass
Sires Include:
Capitalist; Sub-Zero;
Comrade; Predominant;
Niagra; Upshot;
Objective 0316

Fertility Tested, DNA tested, Trich tested, Vaccinated, Ready to go to work!

Blythe Angus

White City, KS
Debbie Lyons-Blythe & Duane Blythe

785-349-2652
785-466-1338

ANGUS BULLS, 19 MONTHS, semen tested, J Bar Angus 785-883-4880

BETSCHART RANCH. Limousin and LimFlex Bulls, DNA and P.I. tested. Genomically enhanced, EPD's, most Homozygous, polled and black, semen checked and ready to turn out. 620-635-2539- evenings. 620-635-5711- cell.

Bull & Female Sale SAT., MARCH 9 2019



MILL BRAE RANCH

Mark Nikkel,
Managing Partner
Maple Hill, Kansas
785-256-4327
millbraeranch.com

BUSS ANGUS

Angus Bulls
14 to 20 Months Old
Featured Sires:
Thunder
Consensus 7229
Angus Valley
Pioneer
Wisdom
Thunderbird
Net Worth
Image Maker
SEVERAL SETS OF FULL BROTHERS

GARY BUSS
Leonardville, Kansas
785-293-4444
785-410-3006

CONSIGNED TO MAY 2nd Manhattan Commission Company cow sale. One 18 month old Balancer bull, one 14 month old percentage Gelbvieh bull, heifer bulls. 785-617-0033

CLASSIFICATIONS

CATTLE	GOAT
SWINE	SHEEP
HORSES	POULTRY
FERTILIZER	TRAILERS
FEED & SEED	MACHINERY
AUTOMOTIVE	EMPLOYMENT
REAL ESTATE	ANTIQUES
SERVICES	PASTURE
IRRIGATION	WANTED
HARVESTING	PETS
LIVESTOCK OTHER	
LIVESTOCK EQUIPMENT	
BUILDINGS-BUILDING MATERIALS	
BINS - DRYERS - VACS	
MOBILE HOMES	
SPRAY EQUIPMENT	
BUSINESS OPPORTUNITIES	
WELDING	
MISCELLANEOUS	



"The Commercial Man's Kind"

Excellent selection of Polled Hereford And F1 Black Baldy 12-18 Months old Bulls
Also, 2 year old Polled Hereford Bulls

Ready to go to work for you -Fertility Tested & Delivered-

Valek Farms
Mick: 785-732-6637
Cell: 785-527-1049
Bill: 785-527-1033



FOR SALE PRIVATE TREATY Yearling Bulls

Calving Ease • Performance Efficient • Docile

Dave Stump
Blue Rapids, KS
785-556-0124

Visit us at
SpringhillHerefords.com
A Gold TPR Breeder

FOR SALE: 14 Commercial Spring bred heifers. Will start calving March 3rd 2018. DD Angus, Seneca, KS. 785-294-1511

15-20 ANGUS SIMIANGUS older cows, bred for September and October cows. Take all or your pick. 785-246-3293

GRAHAM SCHOOL
Graham School for cattle-men and women. We specialize in teaching pregnancy check, artificial insemination, herd health, calf delivery and many other subjects.

DATES FOR 2018

May 7-11
June 11-15
July 9-13
August 13-17
No September Classes!
October 8-12



For more information, call or write:
Dept. GG, Graham School
641 West Hwy. 31
Garnett, KS 66032
785-448-3119
www.grahamschoolforcattlemen.com

Registered Angus Bulls

18-20 month old

Sired by WMR Infinity 141,

Basin Excitement, & Musgrave Boulder.

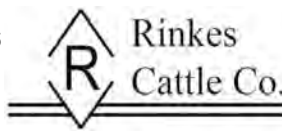
Fall Yearlings Sired by Tour of Duty

- Performance Tested • Fertility Tested
- Free Delivery • Excellent Disposition
- Guaranteed Sight Unseen Purchases

Also selling young Angus Fall pairs & bred heifers

PRICED TO SELL!

Bruce or Lynn Rinkes
2554 Q-4 Road, Holton, KS 66436
(785) 364-3517 or (785) 845-5272
Brandon (785) 817-2328
rinkescattle@gmail.com



GRASS & GRAIN DIRECTORY

**HALDEMAN
WELL DRILLING &
PUMP SERVICE**
785-539-9295
MANHATTAN, KS

**D. ROCHE
FENCING
INC.**
QUALITY BUILT FENCES
DON ROCHE
785-292-4271
FRANKFORT, KS

Custom Manure
Hauling & Spreading
Big to Small Jobs!
Chore-Boyz Services
913-636-1099

Blue Valley Drilling, Inc.
Water Well Drilling & Service
Family Business Over 70 Years!
CONTACT ERIC STRADER
785-363-7353

YOUR AD COULD BE HERE!
Grass & Grain • 785-539-7558

AUCTIONEERS



**GANNON REAL ESTATE
& AUCTIONS**
VERN GANNON, CAI
Broker/Auctioneer
Manhattan, Kansas 66502
785-539-2316
785-537-9003
www.gannonauctions.com
The Experienced Sound In Selling

KULL'S ARMSBID.COM
Kull's Old Town
Station invites
consignments for
our Spring, Summer
& Fall Auctions. If you have
1 or 1,000, we'd like to talk to you.
We will also buy collections or
individual guns.
Dan@ArmsBid.com or
785-862-8800 • 800-466-5516
Topeka, Kansas

**GENE
FRANCIS
& ASSOCIATES**
REAL ESTATE BROKERS & AUCTIONEERS
Serving all 105 Kansas
counties with more than
30 years of experience.
Offices located in Wichita,
Manhattan & Anthony.
Call us today at
316.524.8345
www.genefrancis.com
A bid above the rest!

**purple wave
auction®**
BUY & SELL
Ag Equipment
Const. Equipment
& Vehicles
1.866.608.9283
purplewave.com

CATTLE

**Yearling Angus
Bulls For Sale**

**WOODBURY
FARMS**

Howard Woodbury
785-453-2492 785-241-0515
John Woodbury
785-453-2223 785-229-2557
www.woodburyfarmskansas.com

SWINE

HARMS

HARMS
TOP QUALITY HAMP BOARS
AVAILABLE YEAR AROUND
GALEN & ROBERTA HARMS
Whitewater, KS 316-799-2382

BOARS & GILTS
Duroc, Chester, York,
Hamp, & Hamp/Duroc
SLEICHTER
DUROC FARM
ABILENE, KS
785-263-1898 • 785-479-6694

**SWINE
EQUIPMENT**
Buildings — Ventilation
Flooring — Fans
Waterers — Heaters
Crates — Nursery Equip.
K & N
Swine Systems
RICK HENRY
785-336-2130
SENECA, KANSAS

SHEEP

8 TOP QUALITY NOVEMBER
ewe lambs for sale. 785-477-
2519.

POLYPAY REPLACEMENT
ewe lambs. 60-80 lambs avail-
able. Mature ewes dropped
258%. \$300/hd gate cut.
Ready in May- June. Also a
few quad born ram lambs. Call
for price. 620-755-9120.

LIVESTOCK EQUIPMENT

#1 Pipe
2 3/8.....\$37/joint
2 7/8.....\$43/joint
4 1/2.....\$3.90/ft.

Continuous Fence, Custom
Gates, Hydraulic Chutes,
Tubs, Alloy's, Concrete
Bunks, Load Out Chutes &
Custom Working Systems

Installation Available

DIAMOND L SUPPLY
White City, KS
785.466.6495

• 4.5" Pipe \$4.00
• 2 7/8" Pipe \$1.90
• 2 3/8" Pipe \$0.95
• 1 1/4" Pipe \$0.45

**WILL DELIVER
POST CUT TO ORDER
Quantity Discount**

Ray's Pipe
Council Grove, Kansas
620-767-2907



**Making tough jobs easier
Luco Mfg. Co**

• HYDRAULIC CHUTES
• WORKING CIRCLES
• CAKE FEEDERS
• CONTINUOUS FENCING
• PANELS & GATES

See us at www.lucoinc.com
Or call toll free:
1-888-816-6707
PO Box 385
Strong City, KS 66869



Portable Corral **785-263-3436**
Introducing our New Rawhide
Processor by John McDonald
Used Rawhides for sale also
www.rawhideportablecorral.com

**Tire livestock water tanks
and feeders, tire ground
level mineral feeders.**
endurobrandlivestock.com
785-231-8397

FEED & SEED

Cattle & Hog Feed
WHEAT MIDDINGS
Pelletized, crude protein not
less than 14.5%. Call for pric-
ing.
WESTERN STAR MILL
Division of ADM - Salina, KS
1-800-649-1541 (Kansas)

FEED & SEED

**DAMAGED GRAIN
WANTED STATEWIDE**
We buy damaged grain,
any condition-wet or dry-
including damaged silo corn.
TOP DOLLAR!
We have vacs and trucks.
CALL HEIDI OR GARTON
NORTHERN AG
SERVICE, INC.
800-205-5751

FEYH FARM SEED CO
Alma, Kansas
Native Grass Seed
Wildflowers
Smooth Brome Grass
Erosion Control Products
Cover Crop Seed
866-765-3415
nativeseed@feyhfarmseed.com
www.FeyhFarmSeed.com

**WANTED
DAMAGED
GRAIN**
We pay top dollar for
damaged grain. Trucks and
vac's available. Immediate
response anywhere.
Pruess
Elevator, Inc
1-800-828-6642

PASTURE

ELLSWORTH COUNTY PAS-
ture, 320 acres native grass,
pond, continuous flowing
spring, road access, includes
mineral rights. 620-342-1855.

FAMILY FARM WANTING
grass to run cow/ calf pairs
and/ or open heifers. Honest,
reputable people, looking for
the same. 620-793-2368.

GRASS AND CARE NEEDED
for 70 Fall calving cows, May
1- September 1. 785-227-5414

LAND FOR HUNTING TO BE
leased out. Excellent deer and
turkey hunting. 15 minutes
from Salina. Call 785-225-6777
or 785-822-8719

PASTURE NEEDED FOR UP
to 50 Spring pairs due to
drought. Any acreage con-
sidered. 785-259-2163

AUTOMOTIVE

'04 FORD F350 SUPER Duty,
long bed, 4WD, diesel. 785-
817-1452



2007 IHC 7400 with new
Kuhn Knight RC260
Several Daycabs available
Feed Mixers and
Manure Spreaders
Kuhn Knight, new & used
Belleville, KS
800-536-2293



**MIDWAY MOTORS
SUPERCENTER**
McPherson, KS

Hutchinson, Kansas
Hillsboro, Kansas
2017 Ford F750 Crew XLT
4x4 diesel, auto, loaded,
nice, 29k mi.
2011 Ford F750 Crew XLT
4x4 diesel, Auto, very
clean, utility bed, 81k mi.
2008 GMC Sierra 2500 HD
Crew SLT 4x4 diesel, auto
owner, nice, 200k mi.
2015 Chevy 3500 Crew long
bed LT, leather, diesel,
auto, loaded, 41k mi.
2017 Ram 2500 SLT Crew
4x4, diesel, auto, loaded,
33k mi.
2015 Ford F150 Crew 4x4,
Lariat, Eco Boost, loaded,
nice, 63k mi.

Ask for Kris Hanschu
khanschu@
midwaymotors.com
620-755-2824

WANTED: PETERBILT truck
broken or wrecked. 816-387-
6091

REAL ESTATE

RILEY CO.
AVAILABLE MAY 1.
599+/- acres Flint Hills
Pasture. 2 ponds & windmill.
\$2,100/acre

POTTAWATOMIE CO.
Excellent building site.
40+ acres. Highway frontage,
gently sloping, some trees
and 2 ponds, rural water and
electricity available. 17 miles
North of Manhattan.
\$250,000
MORRIS COUNTY
Price Adjustment
South of Council Grove, 200
+/- acres all pasture. Fenced
and cross fenced, 2 large
ponds and spring fed creek.
\$350,000

Dolly Anderson, Broker
G&A Real Estate, INC.
785-532-8801
Manhattan, Kansas
dollyanderson.com

REAL ESTATE

REAL ESTATE

HORIZON

FARM & RANCH REALTY, LLC

For more info visit our website or contact one of our agents!

1-888-825-1199

www.horizonfarmranch.com

AG LAND

NEW LISTING! 80 Ac +/- CRP just N of Bennington modest investment
return. Call Ray!
NEW LISTING! 50 AC +/- Native pasture bldg site N of Bennington on
blacktop. Call Ray!
NEW LISTING! 155 Ac +/- irrigated farm S of McPherson w/new hay barn.
Everything completely new last year. Call Ray!
NEW LISTING! 760 Ac +/- mostly pasture S of Miltonvale 4 ponds, creek,
50 acres of tillable. Call Ray!
* 240 Ac +/- Pasture with 2 ponds and new fences just west of Gypsum. Call Ray!
* 320 Ac +/- Pasture E of Bennington - **Owner will Finance** - Call Ray!
* 4499 HD feedlot, 4 houses, and 1640 acres near Hope, KS. Top-notch
turnkey facility. Call Brad or Ray!
* 2000 hd feedyard and 160 Ac +/- set up right and ready to sell.
* 160 Ac +/- Upland irrigated tillable @ Lindsborg. Call Brad!
* 366 Ac +/- Farm w/irrigated river bottom tillable at Lindsborg. Call Brad!
* 300 Ac +/- on the Solomon River - **Owner will Finance** - Call Ray!
* 160 Ac +/- Creek bottom till/great hunting @ 81 Hwy/24 Hwy. Call Ray!
* 31 Ac +/- tillable 81 Hwy/24 Hwy. Good hunting, bldg site! Call Ray!
* 160 Ac +/- Pasture/tillable w/nice house and great hunting on Willy's Creek
NE of Abilene on Hwy 15. Call Ray!
* 160 Ac +/- Pasture/tillable combo just NW of Talmage on 18 Hwy.
* 440 Ac +/- in 2 tracts SW of Tescott. Tillable priced in today's market. Call Ray!
* 100 Ac +/- Rain Rd./ 18 Hwy. CRP, building site! Call Brad!
* 80 Ac +/- CRP just west of Abbierville. Call Ray!
* 80 Ac +/- just S of Lincoln, tillable and CRP. Call Ray!
* 240 Ac +/- Geary Co. blacktop frontage 190 pasture w/new fences, 3 big
springs and 2 new wells. 45 tillable. Close to town. Seller is a Kansas
licensed real estate agent. Call Ray!
* 239 Ac +/- Sportsman Paradise timber and Solomon River SE of Bennington.
Proven deer, turkey, and 40 lb flatheads. Call Ray!

COUNTRY HOMES AND LOTS

* Nice country home on 10 Ac +/- @ Lindsborg! Call Brad!
* 20 Ac +/- with nice shop and pens just N of Enterprise along I-70. Call Brad!
* 332 2800 Ave., Abilene/ Solomon - 4 bed, 3.5 bath log home, stone fireplace
w/awesome view and new shop on 16 Ac +/- or add in another 64 Ac +/-!!
Call Brad!
* 3227 Hwy 15 +/- NE of Abilene on 15 Hwy. Nice home on Willy's Creek.
* 24 Ac +/- Bldg. site @ Pawnee Rd. I-135 N of McPherson! Call Lucas!

***Auctions *Private Treaty Sales *Value Assessments**
For more info visit our website or contact one of our agents!

Ray Swearingen Broker/Owner.....785.452.8498

Lucas Hamm785.366.3580 Brad Budden785.280.0915
Calvin Carlson785.819.1480 Rachelle Swearingen785.452.5115
Ty Bryant785.366.0261 Billy Randle785.479.1152
Sheila VanWinkle.....785.280.3564

FARM & RANCH

Homes For Sale
Saline Co.- 2.7 Acres m/l.
Southeast of Saline. 2 Story
vintage restoration. 54x99
Morton Building. Chris 493-
2476
Saline Co.- 4 Acres m/l.
West of Salina overlooking
pond. Wonderful Area full of
amenities. Walk Out Bsmt. 3
Bdrms, 5 Baths. Laura 822-
2438
Saline Co.- 2.9 Acres m/l.
Unique Home. 3 Bdrms., 3
Baths, Sunroom, Built In
2003. Move In Ready. Pam
829-0436
Saline Co.- 9.7 Acres m/l. In
the heart of Salina but
privately located. Ranch
Home. Large Attached work-
shop. Plus Outbuilding &
Vineyard. Jessica 452-8952
Saline Co.- 5 Acres m/l. High
Quality Newer Home with 5
Bedrooms. 3 Car Garage.
Close to Stocked Pond. Am-
ber 820-7472
Ottawa Co.- 3.2 Acres m/l.
One of a Kind home. 1415
Sq. Ft. Barn & Corral. Amber
820-7472
Ottawa Co.- 12.2 Acres m/l.
Over 4000 Sq Ft. of Home
w/walkout basement. 4 Car
oversized garage. Very se-
cluded. Steve 342-9138
Farm & Ranch Division Of:



Antrim-Piper
Wenger Realtors®
631 E Crawford Salina KS
www.cbsalina.com
1-800-276-3641

FOR RENT
OAKHILL ESTATES
LUXURY
1 & 2 BDRM APTS.
Private Balconies & Patios
Woodburning Fireplace
Ceiling Fans
Gas Heat/AC
Exclusive area in Wamego
1-888-537-9064

160 Ac Wab. Co. farm
North of Paxico
160 acres with 97 acres crop
ground, 52 acres pasture with
pond, 5 acre farmstead area
with usable farm buildings
including a steel slant wall
machine shed that is 40' X 60'
for \$371,000.
Contact Mike Pearl:
785-256-5174
or 785-437-6007,
www.pearlrealestate.org
Pearl Real Estate &
Appraisal Svcs., Inc.

RURAL HOMES FOR SALE in
Kansas. 692 2441 Lane, Abi-
lene, 2 acres. 2127 Walker
Road, Milford, 9 acres. 1435
Trail Road, Woodbine, 6 acres.
Crites Real Estate, Auction &
Appraisal Service Inc. Laurie
Crites, Broker. landofzohomes.
com

TRACY JONES REALTY 785-
258-4139. 157ac of West
Dickinson County farm land,
135 ac crop, balance pasture
and CRP. 11 ac Morris County
land east edge of Herington.

TRAILERS

**BOB'S
TRAILER SALES**

Pomona, Kansas
785-418-2227
www.bobstrailersales.com
Circle-D, Elite, Travalum,
Travalong

B&W Hitches
Turnover ball: \$495
Free Installation!

2018 Circle D 20'\$7,850
•2018 Circle D Stock Trailer
24'\$8,700
•2018 Travalum 20' stock
.....\$13,100
•2018 Travalum Aluminum
24' stock\$14,700
•2018 Elite 30' 10k axles
gooseneck flatbed... \$7,500
•2018 Elite 25', 2-7k axles
Gooseneck flatbed\$5,400
•2018 Elite 25' 10k axles
Gooseneck flatbed\$6,950
•2018 Elite 32' 10k axles
Gooseneck flatbed\$7,800

FOR SALE - 2006 WILSON
Commander, 72x102x43ft, air
ride, super singles, \$12,000.
Call 785-577-3624.



**LIVESTOCK & HORSE
TRAILERS**
FLATBED TRAILERS
• 1-800-526-0939 •
www.circle-dtrailers.com



**Wilson
TRAILER**
Since 1980... A Good Name to Have Behind Your

**NEW STOCK, HORSE,
FLATBED, &
UTILITY TRAILERS**

**Trailer Repair Brakes,
lights, sand blast,
paint weld**

**We Install Brake
Controllers**

USED TRAILERS
Waterville Location:
'95 Hillsboro 20' GN Alumin-
um stock\$7,000
'05 Titan 24' GN stock \$7,400
'08 Boss 20' GN stock \$2,500
'16 H&H 16' GN dump \$7,300
'13 Titan 14' BH Dump
.....\$5,800
'16 Titan fuel trailer, tank incl.
.....\$3,500
Fort Scott Location:
'04 Homemade 28' GN stock
.....\$2,500
'05 Titan 33' GN Flatbed
.....\$5,000
'95 Blair 5x8' BH Cargo
.....\$650

Blue Valley Trailers
225 South East St.
Waterville, Kansas 66548
785-363-2224
1-866-368-4826



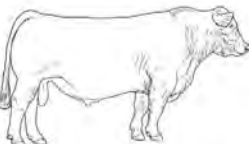
CATTLE

Hereford Bulls
Yearlings
Complete Performance Data
Semen Checked
Females
Call us for your needs



Gustafson
Herefords
7477 Davis Creek Rd
GUS GUSTAFSON & FAMILY
Junction City, KS
Gus Gustafson
785-238-7306

Obermeyer
Charolais



• Beat the rush of the high
priced production sales
• Culled rigorously, all with
excellent dispositions
• 18-20 month old bulls to
breed larger groups of cows
• EPDs in the top 20% of the
breed for WW and YW;
pounds = \$\$\$\$
• Performance data available

Drew Obermeyer
MARYSVILLE, KS
785-799-6273
obermeyercharolais@hotmail.com

**POLLED
HEREFORD
BULLS**

Great selection of coming
2 yr olds & have 2 coming
3 yr olds. Thick, long and
deep bodied. Semen
tested. Handled right so
they are ready to work.
You won't be disappointed!

Riffel's at Enterprise.
785-280-3461 or 479-5963

POLLED HEREFORD FIRST
calf heifers with nice black
baldy calves at side. Valek
Polled Herefords. 785-527-
1049, 785-527-1033



Yearling Registered Angus
bulls, AI sired, performance
tested, carcass ultrasound,
genomic enhanced EPD's,
semen checked & guaranteed.
Lindsborg, KS
785-227-5414

RED ANGUS REGISTERED
yearling bulls for sale. Marvin
Horalek, Frankfort, KS. Home:
785-363-7392, Cell: 785-799-
7269

CATTLE

**RED & BLACK
ANGUS BULLS**



★ Yearling & 18 Month Old
Bulls
★ Calving Ease with Great
Growth
★ Performance Data
Available
★ Good Maternal Traits &
Great Disposition
★ Reasonable Prices
Randy Huninghake
Frankfort, KS
785-556-0319 Cell
785-292-6019 Home

REGISTERED ANGUS AND
Optimizer Bulls for sale private
treaty. 18 month old, black and
polled. Shidler, OK. 918-287-
7825 www.towerhillsranch.com



Registered Angus Bulls
For Sale By
Private Treaty

• Balanced trait bulls with
outstanding docility

• EPDs backed by ISO K data
& over 25 years of AI breeding
and genetic selection

• Ready to work for you

Nemaha Valley
Cattle Co.

Neal & Marya Haverkamp
1360 State Highway 71
Bern, KS 66408

neal@nemahavalleycattle.com
marya@nemahavalleycattle.com

www.nemahavalleycattle.com

785-336-1655 - Cell
785-336-0121 - Office

REGISTERED SIMIANGUS 2
year old bull, polled, thick,
gentle, cow and heifer calving
ease and growth. \$2,500. 785-
246-3293

TIME IS SHORT, TURN-OUT
is here. Two Polled Hereford
March yearling calving ease
bulls. Their sire has increased
pelvic size in females without
increasing frame size. Stout,
dark red. \$2400 each. Free de-
livery. Kanza Cattle, Chapman.
785-313-6565.

GRASS & GRAIN
Place your Classified Ad
ONLINE at:
grassandgrain.com

TRAILERS

Elite Aluminum Stock Trailers
Titan — Sharp
Your Trailer Super Store!
Mid-Plains Equipment
 E. Hwy 30 & 10, POBox 2526
 Kearney, NE 68848
Delivery Available
308-237-5810
www.midplainsonline.com

Trailers 4 U
785-292-4166
 Frankfort, KS

MERRITT TRAVALONG
www.trailers4u.com

TRAVALONG TRAILERS
 New steel & alum. stock
 New 20' to 31' flatbed
 Used GN stock and horse
 skid steer and car hauler
VISSER TRAILER SALES
 Herington, KS•785-258-2800

DONAHUE
 When There's Work To Do...



DONAHUE!
1-800-457-7406
www.donahuetrailers.com



Your Local Dealer for:
 TravAlong, P.J., Hillsboro,
 Sharp, Titan West, Hayliner,
 and Bradford Built.

**Call to Lease
 or Purchase Grain
 Trailers for Harvest**

**Rocking "M"
 Trailer Sales**
 430 S. Colorado
 Waterville, KS 66548
Office: 1-866-261-2526
Shawn: 785-562-6614
Kelsie: 785-313-3233
www.rockingmtrailers.com

MACHINERY

— USED IMPLEMENT —
 Gehl 4240 Skid loader
 Ford 900 tractor
 Gehl 1870 rd. baler
 2014 Gleaner S77 combine
 2012 Gleaner S-77
 1998 Gleaner R72
 Gleaner 8200 30' w/air reel
 Gleaner 800 30' flexhead
 Gleaner 400 30' rigid
 2003 MF 9690 w/30' head
**Call us for your AGCO
 part needs!**

**AGCO ALLIS
 WHITE EQUIP.
 GLEANER
 HESSTON
 MF • GEHL
 DIXON**

Kuhlman Impl.
 LINN, KANSAS
785-348-5547

15' BATWING HEAVY DUTY
 rotary mower, \$7,500. New
 Holland 456 trail type mower 9',
 \$2,000. International dolly
 wheel side rake, \$900. 785-
 630-0621

FOR SALE: VERY CLEAN
 mint 715 IH combine, shedded
 since new, only a few repairs to
 be field ready. Serious inquiries
 only. 785-678-3023

FOR SALE OR TRADE

Gravity Wagons
 New Holland 258 rakes: 1
 ground driven, \$1,575; 1 hy-
 draulic driven, \$3,650

Cooter's
 785-562-2027
 785-562-6131

Firestone DON'S
TIRE & SUPPLY

18.4-38 SATII 8pr TL..... **\$710**
 650/65R38 RAD 9000 **\$1,612**
 480/80R42 Performer EVO **\$957**
 380/85R30 Performer Evo..... **\$560**

Prices and Product availability are subject to change without notice.

TOLL FREE
866-888-7838

MACHINERY

**Case & IH
 Tractor Salvage**
 Case 300's thru 2096
 IH 460's thru 5488
 Over 1000 Tractors on shelf
 New & Rebuilt parts for all
 brands of tractors/ combines
 Want to buy
 Case & IH salvage tractors

Elmer's Repair
 CENTRALIA, KS
 785-857-3248
www.elmersrepair.com

**CLAAS
 USED FORAGE
 HARVESTERS & HEADS**
 '11 Claas 960.....Coming
 '10 Claas 980.....Coming
 '09 Claas 980
 '05 Claas 900.....Call
 '04 Claas 900.....Call
 Claas RU600, 8 row head
From \$30,000

TRACTORS
 2012 Case 315.....\$190,000
 Agco Star 8360.....\$45,000

COMBINES
 0% For 5 years on all 62 & 72
 Series combines
 '13 Gleaner S67
 '12 Gleaner S77
 '12 Gleaner S67
 '11 Gleaner S67
 (2) '10 Gleaner R76
 '05 Gleaner R75.....\$120,000
 '02 Gleaner R72.....\$85,000
 '99 Gleaner R72.....\$75,000
 '95 Gleaner R72
 '98 Gleaner R62.....\$67,500
 (2) '97 Gleaner R62 ..\$45,000
 '94 Gleaner R62.....\$40,000
 '13 3000 12R30.....\$55,000
 '11 3000 12R30.....\$50,000

MISCELLANEOUS
 Sunflower Tillage equipment
Coming in daily

**ALLIS
 WHITE
 HESSTON
 MASSEY FERGUSON**
**Kalvesta Impl.
 Company, Inc.**
 620-855-3567
 KALVESTA, KS 67856
www.kalvestaimplement.com

COMBINES
 2003 Case IH 2388 4WD
 1997 CASE IH 1020 flex, 25'
 2005 CASE IH 2208 8RN
NEW TRACTORS
 Case IH Maxxum 115 MFD
 Case IH Maxxum 125 MFD
 Case IH Farmall 100C MFD
 Case IH Farmall 120U MFD
USED TRACTORS
 2002 Kubota L4310 HST 4wd
 2010 Kubota M8540 FC 2wd
 w/cab
 2013 Case IH Maxxum 125
 MC
MISCELLANEOUS
 2016 Kubota SSV75 w/ cab &
 AC
 2007 Bush Hog 2715 15' cut-
 ter
 2011 Bush Hog 2720 20' cut-
 ter
 2015 Case IH DC102 Moco
 2014 Kinze 3500 8/15
 1994 Case IH 8465, twine

CASE IH
 AGRICULTURE

McConnell Machinery
 1111 E. 23rd Lawrence, KS
785-843-2676
 or
 3313 Nebraska Terr. Ottawa, KS
785-242-1463

Evenings
785-979-2271
www.mcconnellmachineryco.com

2013 JD 6170R TRACTOR,
 170hp, 1070EH. \$89,700. 785-
 539-1980.

2007 JD 9560 STS ROTOR
 combine 1312 SH, 1873 EH,
 72hrs on engine overhaul.
 Field ready, \$94,000. 2009 JD
 622F HydroFlex platform,
 \$14,000. 785-539-1980.

MACHINERY

Gleaner Combines
 '04 R75 RWA.....\$59,500
 '94 R62 Deutz\$21,500
 '91 R60 RWA\$13,500
 '82 & '80 L2S\$8,500
 EZ Trail Gravity Wagons,
 Grain Carts, and Header
 Trailers.

Great Plains Tillage Tools

81 Farm Eq. Service
 McPherson, KS 620-241-3100
1-800-357-3101

GOOD USED DANUSER post
 hole digger, 12" and 9" bit.
 \$1,600. 785-479-0126

GREAT PLAINS 1205 No-Till
 drill, 12", 7.5" spacing with dry
 fertilizer box, shedded. 785-
 456-4179

Guaranteed Used Truck
Tires, most sizes.
Also, I can use LP22.5,
11R22.5, 11R24.5 Clean
Low Grade Casings.
GeeTire.com
Rossville, KS.
785-231-8397

HOT WATER PRESSURE
 washers, new or reconditioned,
 parts for most makes. Whole-
 sale Washer Co. 620-583-
 2421.

IHC 800 6R NO TILL planter.
 GN 24' hay trailer. 785-485-
 2286.

JD 7200 MAXEMERGE2 plant-
 er, 6X30, hydraulic drive, dry
 fertilizer and insecticide, corn/
 bean/ milo plates, new main
 shaft, bearings, clutch, rebuilt
 ComputerTrak 100 monitor,
 new main drive chains, tires/
 tubes. Always shedded. Come
 and get. \$9500. 785-617-0621.

JD 8300 MFW NEW JD en-
 gine, rebuilt power shift.
 \$60,000 785-479-0523.

Used Farm Equipment
 Tillage • Grain Handling
 Loaders • and more

Check website for listings

Mellenbruch
Machinery
Soldier, Kansas
785-834-2541
Cell: 785-305-0234
www.mellenbruchmachinery.com

— PLANTERS/DRILLS —
 '99 JD 1560\$26,500
 '96 JD 1760 12/30"\$15,900
 '16 JD 1775NT 24/30" EE.....
\$229,500
 '15 JD 1795 16/32 EE\$239,500
 '13 DB90 36row\$149,500
 '07 Kinze 3500 8/15...\$42,500
 '10 Kinze 3660 16/31 ..\$69,500
 '12 Kinze 3500 8/15...\$49,500

— COMBINES —
 '16 JD S680\$299,500
 '13 JD S680 4wd\$209,500
 '17 JD S680 4wd\$319,500
 '16 JD 670\$219,500
 '12 JD 5670\$144,500
 '14 JD S670\$239,500
 '14 JD 670\$189,500
 '17 JD S670 4WD\$319,500
 '13 JD S660\$159,500
 '10 JD 9870\$119,500
 '05 JD 9660 Hillco.....\$99,900
 Corn heads
— SPRAYERS & APPL. —
 '15 JD 4038 100'.....\$209,925
 '09 Spray Coupe 4660\$59,900
 '05 Spray Coupe 4450\$34,500
 '08 CIH 4520.....\$99,500
 '05 CIH SPX 3185\$52,500
 '07 Bestway 1000 gal ..\$8,250

— TRACTORS —
 '16 JD 9620 RX\$424,500
 '16 JD 9570 RX\$399,500
 '13 JD 9510RT.....\$229,500
 '12 JD 9460R.....\$199,900

TRACTORS/SKID LDERS
 2005 Case IH MX 255
 MFD, 4300 hrs
 1997 NH 8870 2WD, 7900
 hrs
 2014 JCB205 skid loader
 2015 JCB 280 skid loader,
 105 hrs.
 2015 JD 323 E track skid
 loader, 140 hrs.
 Cat 8' roll out bucket, off
 928G
 2013 JCB260 skid loader
 2008 JCB 536-60 Agra
 telehandler 2,800 hrs
 2013 JD 323D track skid
 loader, 560 hrs.

HAY EQUIPMENT

2003 Hesston 956A, 6700
 bales
 Vermeer BPX 9000
 Vermeer M7040 7' rotary
 disk mower
 New MacDon R116 Moco.
 New H&S 1660 16 wheel
 Hi Cap rakes
 1997 Hesston 565A round
 baler

COMBINES
 1986 Case IH 1063 corn-
 head with corn reel
 2004 Case IH 2366
AUGER & GRAIN CARTS
 New Parker 839 grain cart

MACHINERY

NEW

- 604-605N net
- R2300 & R2800 rakes
- TM800 Trail Mower
- VR-8, 10, 12 wheel rake

USED EQUIPMENT

- 605M net ramp floats
- 665M twine ramp
- 505I baler, \$3,500
- JD 700 rake hyd fold \$5,500
- CFR960 HL bale processor,
 like new round & square hay
 grapple fork scales
- BP8000 w/ FinalCut
- BP8000 w/Scales

FEED MIXERS

- FA-550 Feed wagon

*To view all of our New &
 Used Equipment, please
 check out our website:
www.sloophook.com or
 give us a call: 785-828-4706*

**Sloop Sales &
 Hook's Repair Inc.**
 Lyndon, KS 66451



NEW

Balers: 605N, 504R, 604N
 Rakes: VR1428, 2- VR1224
USED
 Balers: 4- 605SM, 2- 605N,
 1- 605SM corn stalk, 1-
 504N, 1- 504R Demo, 1-
 6650 Rancher Rakes: 2-
 R2800, 2- R2300, 1- VR1428,
 1- VR1224

LARGER BALE FORKS
SPRING STEEL AVAIL.
METAL
ROUND SQUARE TUBING
ANGLE CHANNEL & FLAT
 2 3/8", 2 7/8", 4 1/2" pipe
 3/4 & 7/8 sucker rods
WELDING SUPPLIES
 Oxygen C125 & acet. Bottles
 for sale
 Welding rods & wire
 Top & bottom belts for all bal-
 ers

Twine 4' & 5' netwrap
 Portable panels, Feed Bunks
 & Round Bale Feeders
Forrest Johnson
 LEONARDVILLE, KS 66449
 785-293-5583
 785-293-2235

'16 JD 8370 RT.....\$247,500
 '16 JD 8370 R.....\$269,500
 '14 JD 8345 R.....\$229,500
 '12 JD 8335 RT.....\$179,500
 '11 JD 8335 MFWD ..\$157,500
 '92 JD 4960\$59,500
 '84 JD 4850 MFWD\$29,500
 '82 JD 4640\$21,500
 '83 JD 4450\$34,900
 '15 JD 6155M\$97,500
 '13 NH T8 360\$129,900
 Ford TW10.....\$17,500
 '14 Kubota BX2670....\$14,900

— TILLAGE —
 '13 JD 2623VT 30'\$42,500
 '11 JD 2310 45'\$65,500
 '14 JD 2210 64'\$52,500
 '12 JD 2210 55'\$47,500
 '13 JD 2210 28'\$29,500
 '13 JD 20 20' 2623VT\$36,500
 '11 JD 512\$39,500
 '06 SF 1444 40'\$29,500

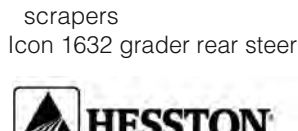
785-742-7121
HIAWATHA, KS 66434
www.hiawathaimplement.com



Parker 510 grain cart, cor-
 ner auger
 UFT 500 grain cart, 1000
 PTO side auger

MISCELLANEOUS

2006 Case IH 1200 16 row
 30 stacker planter
 2008 Case IH 1200 16 row
 30 stacker planter
 New Rhino TW 27 rotary-
 cutters
 New Rhino 1540 10' Hyd.
 blade
 New Danuser Intimidator
 skid steer tree puller
 New Brown 10' & 12' box
 scrapers
 Icon 1632 grader rear steer



**SUPERIOR
 IMPLEMENT, INC.**
402-879-4723

Evening: 402-879-3719

SUPERIOR, NEBRASKA

MACHINERY

New Equipment
 604N Baler
 605N Baler
 R2300 Twin Rake
 R2800 Twin Rake
 VR1224 12 Wheel Rake
 TM800 Trained Mower
 MC3300 Mower Conditioner
 BPX9000 Bale Processor
 4' & 5' Net Wrap & Twine
Wertzberger Ranch
Equipment LLC
 Alma, KS
 785-765-3588

PLANTER SALVAGE

IH 800-900-950-955 Cyclo
 JD 494-1280, 7000-7300,
 plate and plateless
 White 5100

Koelzer Repair
 Onaga, KS 785-857-3257

MACHINERY

NEW EQUIPMENT
 TE170 tedder
 6650 Rancher Baler
 504 Signature R baler
 Winkler Calving Pen
 Portable Corral
 R2300 rake
 VR1224
 BPX 9000 Bale Processor
 MC 3700
 Perfect Tree Saw
USED EQUIPMENT
 605N
 555 XL
 605G baler
 605M baler
 M850 Mower Demo
 3 pt tree shear

BERG REPAIR



14200 Godlove Rd.
Westmoreland, KS
785.457.3534

BRUNA IMPL. CO.

HAY CUTTING:

2015 Case IH WD1504 w/16',
 1 hrs\$108,500 (C)
 2016 Case IH WD1504 w/16'
 243 hrs \$101,000 (W)
 2015 Case IH WD2504 w/16'
 103 hrs \$138,500 (S)
 1990 Case IH 8840 w/16',
 1732 hrs\$21,500 (M)
 1995 MacDon 9000T w/16'
 1813 hrs \$24,500 (W)
 2002 Case IH DCX161 16'
\$15,500 (W)
 2014 Case IH DC131 13'
\$27,500 (S)
 2010 Case IH DC132 13'
\$23,900 (C)
 Hesston 1160 14' ..\$6,500 (M)
 JD 956 15'\$28,000 (W)
 JD 1525 14'\$4,500 (M)
 NH 499 12'\$7,200 (W)
 2009 NH 499 12' ..\$15,500 (M)

COMBINES:
 2013 Case IH 8230, 1430 hrs
\$198,000 (W)
 2004 Case IH 8010, 3105 hrs
\$69,500 (C)

— ITEMS FOR SALE —

JD 4520 tractor came out of JD
 factory w/out 3pt\$6,000
 2008 JD 8130 tractor w/KMW
 1860 ldr\$87,500
 JD 6150 MFWD tractor...CALL
 JD 6125M MFWD tractor PQ3
 remotes, 3797 hrs\$55,000
 1997 NH 9282 tractor, a little
 over 5000 hrs.....\$38,000
 2007 Case IH 140 Maxxum
 tractor w/ldr\$50,000
 2000 Case IH FLX4375 air
 boom dry fertilizer machine ...
\$30,000
 IH 856 tractor\$5,000
 IH 1086 tractor\$9,500
 Allis-Chalmers 7060 tractor
\$4,500
 JD 220 rigid head\$900
 JD 920 rigid head\$4,000
 JD 930 rigid head\$8,000
 1990 JD 853A rowhead
\$13,500
 JD 608C Cornhead 8R30
\$26,000
 2004 JD 893 cornhead 8R30 ..
\$13,500
 JD 644 cornhead 6R36 ..\$4,750
 2009 CIH 2152 rigid draper,
 40'\$20,000
 JD 915 flexhead\$3,500
 JD 918 flexhead\$4,500
 JD 220 flexhead\$900
 JD 200 flexhead\$2,000
 2002 JD 930 flex hed full finger
\$9,000
 JD 930 flexhead 30'\$5,500
 2006 JD 630 flex head..\$8,000
 Parker 250 gravity wagon w/
 auger.....\$2,250
 Brent 674 grain cart\$10,000
 A&L 356 grain cart\$2,200
 2016 Bale King 5100 pro
 BRAND NEW\$18,250
 2003 NDE 1402 Vert Mixer
 Wagon\$9,750
 Farmland XG30 tubgrinder.....
\$5,250
 2- JD 716A wagons\$6,000
 JD 714A Chuck wagon ..\$6,000
 2008 Supreme Int. 600 mixer
 wagon\$12,000
 2012 JDR450 swather \$70,000
 JD 956 Moco Swather \$14,000
 Hesston 9240 swather.....CALL
 JD 705 hayrake.....\$5,500
 NH 660 round baler\$2,200
 JD 530 baler.....\$2,200
 GP 3000 Turbo-Till\$20,000
 CIH 330 Turbo VT machine.....
\$26,000
 Sunflower Fallowmaster 42

MACHINERY

OUR 65th YEAR
USED TRACTORS
2017 JD 8370R
2014 JD 8370R
2015 JD 8345R
2014 JD 8335R
2010 JD 8320R
2016 JD 7210R
2001 JD 7810
2015 JD 675R
2011 JD 7230
1980 JD 4240
USED PLANTERS
2015 JD 1795 16/31
COMBINES
2017 JD S660
2011 JD 608C
2015 JD 630FD
USED EQUIPMENT
2012 JD 2510H Dry 16R
2011 JD 568 baler
2008 JD 568 baler
NEW EQUIP. SPECIALS
2017 JD 569 baler
2017 JD HX15
SOLID – STABLE
STILL JD


TODD TRACTOR
COMPANY INC
785-336-2138 Days
785-548-5855 Nights
Visit Us At
toddtractor.com
Seneca, Kansas

RITCHIE BESTWAY FIELD

Pro2-1000 sprayer, 60' boom, SCS440 Raven controller. JD 7200 8-row planter, liquid fertilizer. JD computer track200 monitor. T-Jet844 sprayer controller. 620-345-6886

ROWSE HYDRAULIC Mowers

double nines, fully reconditioned. 785-845-5272

SALVAGE COMBINES

ALLIS N7-6, L2, L, M, G, F2, F, CII, AII; JD 8820, 7720, 7700, 6600, 4400, 3300, 105, 95, 55; MF 860, 760, 750, 510, 410; IH 1680, 1480, 1460, 915, 815, 715, 503, 403; NH TR70-85, 1400, 995, 985, 975.
SALVAGE TRACTORS
ALLIS 7000-7080, 220, 210, 190XT; D17-19; JD 84-8630, 7520, 6030, 5020, 4630, 4430, 4020, 3020, 720, 730; CASE 1470, 1370, 1270, 1200, 1070, 930, 400; IH 1568, 1466, 1256, 1066, 1026, 806; FORD 4-5-6-8-9000; MF 2745, 1155, 1100, 90, 85; OLIVER 2150; MM G1000; WH2-150, 4-150.
Mike's Equipment
BUHLER, KANSAS
1-800-543-2535

SALVAGING COMBINES

N5, N7, L, L2, M, F, G, C, CII, AII, A&E, K Gleaner. 6620, 7720, 8820, 7700, 6600, 4400, 3300, 105, 95, 55, JD. 915, 1480, 1460, 1420, 815 IHC. 860, 760, 750, 510, 410, 300 Massey. Several black & orange Gleaner corn heads.

Jack Boyle
Vermillion
785-382-6848 785-564-0511

WE RENT TREE SHEARS!

BOBCATS - TRADE-INS

2005 Bobcat S175, 2250 hrs\$16,000
2016 Bobcat T740 A91 SJC\$54,000
2016 Bobcat S590 A91, 150 hrs\$37,000
2016 Bobcat S650 A71 SJC TS,\$40,000
3695 Green Valley Road
Manhattan, KS 66502
For More Details Call
Greg • 785-215-4285
Travis • 785-410-8985
Office • 785-537-9979



AbileneMachine
Ag Replacement Parts
With 5 locations,
Abilene Machine is one of
the largest distributors of
new, remanufactured and re-
cycled ag replacement parts
in the United States.

800-255-0337
www.AbileneMachine.com

WOODS 10' ROTARY mower,

new blades. Frontier 8' rotary
mower. \$1,200 each. 785-392-
2331

MACHINERY

USED TRACTORS
'13 Case IH Magnum 315,
1430 hrs
2011 Case IH Farmall 65A
MFD, ldr. 2413 hrs.
'01 Case IH MX220 MFD,
6,060 hrs
'41 IH Farmall A w/ Woods
belly mower
MISCELLANEOUS
'14 Case IH 5130 Combine,
4wd 760 engine hrs, 510
sep. hrs
'09 Case IH RB564 3600
bales
Vermeer 604M
2- 2012 Case IH 1250 plant-
er, 16x30
'09 Case IH 1250 12/30 bulk
fill
'06 Case IH 1200 PT 12/30
planter
'15 JD 2210 FC 34'
'02 Case IH 4300, FC 27'
'92 Case IH 4800 32' FC
GP Turbo-Till 3000
'07 Case IH 340 25' disk
'08 Case IH 375 disk, 34'
IH 9' chisel, 3pt
'82 JD 6620, 3200 hrs, 4WD
'94 JD 915 flex
'87 Case IH 1020 15'
'89 Case IH 1020 25'
'94 Case IH 1063 cornhead
IH 863 cornhead
1990 JD 1219 lower conditio-
ner
'95 Case IH 8465, A. baler
IH 430 sq. baler twine tie
Tonutti 8 wheel rake
Woods 3180 Batwing mower
MF 14A plow 2x14
NEW EQUIPMENT
Case IH WD2504 SP Windro-
wer w/ RD 163 disk header
Farmall 35A series 2 w/loader
Farmall 35C series 2, MFD
w/ldr
Farmall 120U MFD, cab
Maxum 125
2500 Ecolo-til 5 shank
Several Bush Hog rotary
mowers and tillers
Bush Hog 2402 posthole
digger
Complete line Bush Hog zero
turn mowers
ROSSVILLE
Truck & Tractor

ROSSVILLE, KANSAS
785-584-6195

WE ARE DEALERS FOR


Kelly-Ryan-
Kewanee - Westendorf
C.E. Attachments
H&S

Just In
10', 12', 14', 16',
18', & 20' GATES
CORRAL PANELS

8' corral panels.....\$60.00
10' corral panels.....\$70.00
12' corral panels.....\$80.00
14' corral panels.....\$90.00
16' corral panels.....\$100.00
SKID LOADERS
& ATTACHMENTS
Gehl 100 grinder mixer w/SAF
New Danuser Intimidator tree
& post puller
Tobin flip blade for skid steer
2004 Gehl 6640 skid loader
New Gehl skid ldrs & track
ldrs
Haugen 4 spear bale fork
Pallet forks 48"\$800
Haugen bale grapple bucket
New M&M tree shears &
grapples
New CEA pallet forks
New CEA tooth bars
New Mensch, manure scrprs
New Danuser and Lowe post
hole diggers, skid loader
mounts\$2,500
New brush grapples
New Bale Spears for big
rounds and square\$650
NEW EQUIPMENT
Cimarron 10' 3 pt. rotary
mower
USED EQUIPMENT
Gehl 4610 diesel skid loader
Kelley Ryan 5x13.5 manure
spreader
Kelley Ryan 5x12 feed wagon
Case 830 gas tractor
AC 185, diesel
GB 660 loader CIH 5120 seri-
es Maxxum tractors
GB 800 loader
SENECA IMPL. CO.
Hwy. 36 West
SENECA, KANSASS
Day...785-336-2621
Night.....785-336-2502

IHC 25' 496 tandem disc Call

Used KMW loader, fits Mag-
num,\$4,250
Landpride 3 pt 10' rotary
mower, used very little,
.....\$8,000
Several new and used Zero
Turn MowersCall


WINCHELL'S, INC.
Phillipsburg, KS
785-543-2118

EMPLOYMENT

EXPERIENCED FARM em-
ployee needed in Northeast
Kansas row crop and feeder
operation. Competitive salary.
785-565-8526.

EMPLOYMENT


EXTENSION AGENT,
Livestock Production
opportunity in the River Valley
District. Office located in
Belleville or Washington.
See www.ksre.ksu.edu/jobs for
responsibilities, qualifications,
and application procedure.
Application deadline: 4/26/18.
K-State Research and
Extension is an EOE of
individuals with disabilities &
protected veterans.
Background check required.

BUILDINGS / BLDG MTLs.

DIAMOND L SUPPLY
White City, KS
1.888.608.7913
Metal Panels &
Accessories:
• Post Frame Buildings
• All Steel Buildings
• OH Doors • Sliding Doors
• Insulation • Red Iron
• Walk Doors
• Customers are always #1
• Give us a call for your
Free Quote.

FOR SALE - TELEPHONE

poles of various sizes. Call
620-366-5383.

FOR SALE: 118 ROOF

panels, 49 feet 11 inches long.
These panels are 24 gauge
heavy metal, snow white in col-
or and 24 inches wide, stand-
ing seams. Perfect for a large
hay barn or livestock loafing
barn. Total 11,800 sq. ft. new.
Priced at \$15,000.00. Call Bill
at 785-456-9509.

Metal Panels
& Accessories

THE VALUE LEADER. WE
WON'T BE UNDERSOLD
METAL \$54/ SQUARE
• DELIVERY AVAILABLE •
Prices subject to change
WESTERN METAL
2 Locations • Best Service
Louisburg, Kansas
1-800-489-4100
HAYS, KANSAS
1-800-770-2725

SMITH POSTYARD

Hedge Post
Delivery Available
JEFF SMITH
620-496-8956


STEEL BUILDING
INVENTORY SALE
I-Beam Construction
Easy Bolt-Up Design
40x65, 60x90, 100x150

Many Others Available

(800) 369-3882
www.toplinebuildings.com
sales@toplinebuildings.com

TARIFF PROOF
PRICING:

Saving on steel in 2018 takes
experience and GoBob has
dealt with steel pricing hikes
before. Cash in on our know-
how, give us a call to get the
best pricing for your corral
fencing project! Want proof?
Check out these oddballs –
LOWER DEMAND = LOWER
PRICES, BUT THEY GET
THE JOB DONE!
New 4" .300 wall (+/-) vs. New
4 ½" .227 wall 4" –
just as heavy, 20% less cost.
2 5/8" xhvy wall vs. 2 7/8"
standard wall 2 5/8" –
just as heavy, 25% less cost.
JUST A SAMPLE OF HOW
WE ARE BATTLING
HIGHER STEEL PRICES.
CALL FOR MORE!
855-880-7964
GoBobKS.com

SERVICES

CUSTOM
PORTABLE
DISC-ROLLING

DARRELL WAGONER
Cell: 785-650-4094

LARRY'S PORTABLE

Saw-
mill service, can come saw
your logs. 785-776-8153. 785-
565-2647.

PASTURE FENCE AND DIRT

work. Quality work guaranteed.
Servicing North Central Kan-
sas. Call Jim at 785-376-1735.

PETS

BLUE HEELER PUPPIES.
316-734-6308.

GREAT PYRENEES Puppies

full AKC, vet checked, applic-
able shots, and dewormed.
785-256-5609.

WANTED

M&M MODEL R TRACTOR
complete, dead or alive. 620-
465-2283.

WANTED

DAMAGED
GRAIN
WANTED
STATEWIDE

We buy damaged grain,
any condition
-wet or dry-
including damaged
silo corn.
TOP DOLLAR!
We have vacs
and trucks.

CALL HEIDI OR
GARTON
NORTHERN AG
SERVICE, INC.
800-205-5751

MISCELLANEOUS

HOUSE FOR RENT SOUTH of
Junction City, 3 bedrooms, 1
bath, W/ D hookup, large yard;
\$600/ month includes rural wa-
ter, trash pickup and lawn care.
Call 785-238-4470 after 5:30
pm.

WANTED CORNING HIGH
school year books from 1928-
1931. 785-608-3504.



Since 1954

GRASS&GRAIN

Published by AG PRESS

ARRIVING IN KANSAS
MAIL BOXES SINCE 1954...

Since 1954

GRASSANDGRAIN.COM

...ONLINE SINCE 2007.

Letters to the Editor

This was mentioned at
the annual meeting of the
Dickinson County Heritage
Society, however, there
was no discussion – opin-
ion poll taken
In reading some old *Re-
flector-Chronicle* papers, we
want to express our total
disappointment that there
was an article that refers
to combining the two big
events sponsored largely
by the Heritage Society.
Here are our reasons
we want to object:
1) Original planning
committee for the 150th
Chisholm Trail Celebra-
tion was two years (2016-
2017) on Labor Day week-
end. This was protested by
the Chapman Lions Club
and their economic devel-
opment committee, but re-
luctantly agreed to.
You have had those two
years and they were good
years. Common courtesy
would at least dictate con-
tacting them before pro-
ceeding with your plans
for next September.
2) Chapman, Dickinson
County, has had Labor Day
Celebrations for over 100
years. The Bennington
Rodeo has been held that
weekend for years.
3) There is much dupli-
cation of featured events
such as a car show, parade,
activities for children, con-
certs, dances, etc.
4) if you combines the
two events (Chisholm Trail
Celebration and Chisholm
Trail Day Festival) spon-
sored by the Dickinson
County Heritage Society,
you should keep it on the
October date like it has
always been. There would
have been longhorns
shipped that weekend, too.
Please honor your
promise of only two years.
Do not further ruin the
Chapman Labor Day tra-
dition and thus dividing
both crowds of folks from
Dickinson County.
(County Administrator
Brad) Homann and the
county should step in and
look at the total picture
and try to cultivate the suc-
cess of all of our communi-
ty events by not doubling
them all up on one week-
end. Example: there was
much consideration given
before moving our Central
Kansas Free Fair in re-
gard to not totally setting
dates overlapping Saline
County's fair, even con-
cern that once every seven
years a day or two might be
on the same dates.
We are members of

the CAPS at Chapman
and support the Chapman
Lions Club as well as hav-
ing been longtime support-
ers of the Dickinson Coun-
ty Heritage Center.
Please reconsider
your decision. Be a “Good
Neighbor.”
Bob Diehl
Member of Chapman
Economic Development
Committee

Grass & Grain:
Our property taxes in-
creased 81% the last three
years, while the Kansas
farm economy plummeted
35%! This year another 5+%
increase, and the Rooks
County assessor indicates
another increase next year.
These outrageous increas-
es are short-sighted and
irresponsible. That suck-
ing sound heard sweeping
across Kansas is the flow
of taxes from rural Kansas
to cities with universities
and community colleges – I
know – we lived in Law-
rence 40+ years.
The cost of an educa-
tion has increased 1000%
since 1978 – the greatest
increase of any category.
These numbers cannot be
sustained and they are
crushing the Kansas econ-
omy. And the most recent
news indicates \$80M has
disappeared, or has reap-
peared – so much money is
thrown at education – no
one seems to know.
The Kansas legislature
needs to represent the tax-
payers of Kansas.
Best regards,
Jay Lindquist
SE Rooks County

Dear Editor,
My wife and I founded
Morningstar Care Homes
in memory of our grand-
parents who suffered in
institutional nursing facil-
ities because we wanted
something better for our
parents' generation. We
knew that we were called
to create real home envi-
ronments for all levels –
assisted, memory and total
care — as alternatives to
traditional nursing facil-
ities. We know our resi-
dents as our own family
members and treat each
person with the highest
level of care.
In the burgeoning Se-
nior Living industry, the
problem is not that we are
unprepared for the mas-
sive influx of baby boom-
ers needing care. The
problem is that with this
demographic change at the

door, the corporate Senior
Living industry is not just
unprepared, it is in com-
plete crisis and chaos.
A New Jersey compa-
ny allowing 36 facilities in
Kansas and Nebraska to be
taken over by the state to
protect elderly residents
is barely news these days.
The stories come so regu-
larly we are desensitized
to the horror. Residents in
Houston up to their hips in
flood water. Heat-related
deaths in Florida because
the facility failed to evacu-
ate. Local facilities put on
the State of Kansas watch
list.
And lest our non-prof-
it facilities, or our home
health, home care and hos-
pice cousins claim the high
ground, they regularly re-
ceive publicity about com-
mitting Medicare fraud, or
for employing caregivers
who steal their client's as-
sets while working in their
personal residences.
The largest provider of
Senior Living in the Unit-
ed States was reportedly
in talks about selling out
to the Chinese, and now
discusses its proposed
solutions as a “strategic
pivot.” As an owner and
operator, I mused as to
how one “pivots” after ac-
cepting responsibility for
the health and welfare of
100,000 residents and a
roughly similar number
of employees, then failing
financially while the for-
mer CEO took home \$6.6
million in pay. Some of the
large players are currently
investing profits in profes-
sional sports franchises.
After all these years
in business I continue to
believe in the following
fundamentals for our care
homes: Maintain local
ownership and operate a
small number of facilities
to insure you are involved
at the ground level. Staff
to the level of care the
residents need. Provide a
real home environment.
And finally, be ethical in
all you do.
It is imperative that the
corporate Senior Living in-
dustry not lose sight of the
true purpose of our chosen
profession. We all must do
better to implement solid
solutions before the wave
of seniors arrives.
Sincerely,
Scott D. Schultz,
Founder and President
Morningstar Care
Homes
Fredonia, Neodesha,
Baldwin City, Ottawa

Since 1954

GRASSANDGRAIN.COM

About Us
Current Edition
Place an Ad
Archived Editions
Printing
Contact Us
WELCOME TO G&G — A RURAL NEWSWEEKLY
Grass & Grain, a farmers' newsweekly, has been
published in Manhattan, Kansas for over 60 years.
The G&G community looks to the
Tuesday publication for timely, accurate information.

Brazil's Marfrig buys National Beef, becomes world's second-largest beef processor

Brazil's Marfrig Global Foods acquired 51 percent of National Beef Packing Company, becoming the world's second largest beef processor, the company announced.

"The acquisition of National Beef is a unique opportunity," said Martin Secco, Marfrig CEO. "With the transaction, we will have operations in the two largest beef markets in the world, we will reach extremely sophisticated consumer countries, and we can grow by maintaining strict financial discipline."

The company's slaughter capacity will total 8.3 million cattle per year. Marfrig will also have access to the Japanese and South Korean markets, which are currently closed to Brazilian beef. National Beef will remain under the management of current CEO and chairman Tim Klein.

REAL ESTATE & PERSONAL PROPERTY

AUCTION

SATURDAY, MAY 5 — 10:00 AM
3086 Keats Ave. — MANHATTAN, KS

REAL ESTATE: 1,050 sq. ft. 2 bedroom, one bath house with basement, large covered front porch, two outbuildings on a 4,610 sq. ft. lot with its own well. Located on Keats Avenue.

Call Jeff 785-565-8293 to view property.

PERSONAL PROPERTY: Dining table with 6 chairs and 2 leaves, ornate bedroom set with matching dresser and bed frame, couch, recliners, small desk, entertainment console, 2 single beds, floor lamps, handicap equipment, **Technics Electric Piano**, glass insulators, **Planters glass peanut jar w/lid**, glassware, costume jewelry, toys, RCA Victor 45 record player, stereo console, guitar, JD riding lawn mower, dishes, kitchen utensils, sea shell collection, flatware, floor lamps, cherry pitter, tea pots, wheelbarrow, hand tools, table saw, power tools, gardening tools, vacuum cleaner, nut and bolt bin, misc. shop tools, fishing poles **AND MORE!**

AUCTIONEER'S NOTE: Nice house located in the small quiet setting of Keats and only 4 miles from Manhattan. Lots of treasures yet to be discovered still packed in boxes. **COME ENJOY THE DAY WITH US.**

SELLERS: VIRGIL L. & MILDRED N. MURPHY TRUST

TERMS: Real Estate 10% down day of auction. Closing to occur on or before June 8, 2018. Selling as is where is with no warranties implied. Announcements made day of sale take precedence over previous printed materials. Not responsible for accidents. **Personal property** cash or good check.



Jeff Ruckert, Broker/Auctioneer
Manhattan, KS 66502
785-565-8293
jctt.97@gmail.com

www.RuckertAuctions.com
& Check us out on Facebook

Marysville Livestock Sales

Every Thursday at 12 Noon

Donnie Kirkham, Manager • 785-562-1015

1180 US Hwy. 77, P. O. Box 67, Marysville, KS 66508

PLEASE VISIT OUR WEB SITE TO SEE OUR LATEST DETAILED MARKET REPORTS AND UPCOMING CONSIGNMENTS AND SPECIAL SALES: www.marysvillevivestock.com

		BEEF		Market Report for 4-19-2018.	
				1906 HEAD SOLD	
				HFRETTES	
300-400#		\$230.00-\$186.00		1385#-890#	\$118.00-\$68.00
400-500#		\$195.00-\$156.00		COWS-HIGH YIELDING	
500-600#		\$185.50-\$140.50		1985#-1080#	\$67.00-\$58.00
600-700#		\$164.50-\$126.00		COWS-LGT WT & LOW YIELDING	
700-800#		\$146.50-\$130.00		1695#-925#	\$57.50-\$49.00
800-900#		\$136.25-\$121.50		BULLS	
900-1000#		\$121.75-\$117.50		2240#-1325#	\$85.00-\$66.50
		HEIFERS			
300-400#		\$191.00-\$163.00		FIELDMEN	
400-500#		\$162.00-\$140.00		Jim Dalinghaus	Dave Bures, Auctioneer
500-600#		\$158.00-\$140.00		785-799-5643	402-239-9717
600-700#		\$145.50-\$120.00		Baileyville, KS	Odell, Nebraska
700-800#		\$129.00-\$120.00			Hanover, KS
800-900#		\$118.00-\$113.50			Barn Phone • 785-562-1015
				www.marysvillevivestock.com	
				Greg Anderson	Trevor Lundberg
				785-747-8170	785-770-2271
				Waterville, KS	Frankfort, KS

ESTATE AUCTION

SATURDAY, MAY 5, 2018 — 9:30 AM

MINNEAPOLIS, KANSAS

AUCTION LOCATION: 475 Meadowlark, Drive. North from Salina take Minneapolis exit West off of 135 for approximately 1 mile to Meadowlark Drive.



VEHICLES, MOWER & GOLF CART

(Sell approx 1:00)

1931 Ford Model A, Deluxe Coupe, rumble seat, runs good, green & black, **fully restored**; Ford Ranger 2WD, crew cab, 18.5k actual miles, very clean; EZ-Go Freedom golf cart, batteries bought new in 2014; JD XL176 riding garden tractor. These items were always shedded. 2 wheel golf/ATV trailer (50"x105"), tilt bed.

COLLECTIBLES

1988 Trend Sligh grandfather clock; 12 place setting Currier & Ives china (Old Grist Mill pattern); Noritake 8 place setting ivory china (Fragrance design); Blue Willow platter by Royal china; red compote set, other red candle holders; wood high chair; 7 Limoges collector plates by Guy Cambier; several piece of Carnival glass, press glass and other good glassware; ornate German cuckoo clock; large Russell print; old oak crib; Miller Garage thermometer, Wells KS; 2 full quilts & 1 Sun Bonnet child's quilt; many pieces of quality handiwork; oak library table spur lamp; records from the '60s & '70s; 1889 Robinson

Crusoe book; Waterfall chest of drawers & headboard; antique rocking horse; 1980 Keith Avery print (cowboy); wave front oak wash stand; Mosler, Bahmann 24"x33" safe on wheels.

HOUSEHOLD ITEMS

Maple dinette set w/4 chairs; Master Craft floral sofa; blue recliner & wing back chair; oak coffee table; Vizio 32" TV, Sharp 15" TV; new roll top oak desk; 32" desks; maple swivel desk chair; Gevalia coffee maker & other quality housewares; pottery dishes & casseroles; many Louis L'Amour paperbacks and other newer hardback & paperback books; padded office chair; Necchi sewing machine; bookcase full bed & dresser w/ mirror; 4 piece maple bedroom set; brown wing back chair; 3 odd end tables; misc. quality jewelry; many quality pictures; nice curio cabinet; holiday decorations; 2 piece Chaps luggage; Id Travel Pro suitcase; oak TV trays; home built cedar wardrobe (locks).

SHOP ITEMS

Craftsman 10" table saw; JD battery charger; Emerson twin cylinder air compressor; Clarke bench grinder electric hack saw; American car jack; Plainsman drill press; Mag 19 push mower; lots of Craftsman mechanic tools & sanders, open & closed end, other quality tools.

SELLER: Rev. Inter Vivos Trust of ALAN WINDHORST
Dave Windhorst, Trustee

AUCTIONEER'S NOTES: This is only a partial listing of the things that are to be liquidated. We will be running 2 rings part of the day. Items in this sale are extremely high quality and condition.
For pictures & complete listing go to kansasauctions.net/reynolds

REYNOLDS AUCTION SERVICE

ABILENE & CLAY CENTER

RANDY REYNOLDS: 785.263.5627
landmanrj@gmail.com

TERMS & CONDITIONS: Cash or personal check with proper ID. All items must be paid for before removal. Statements made day of auction take precedence over printed material.

Independent Cashier: Diane Lykins

LUNCH SERVED BY
The Sunset Spiritualist Church Ladies from Wells, KS

Cowboy Up

by Ron Wilson
Poet Lariat



Singin' at the Statehouse

"You've been in tall cotton," my dad would say. I'm not sure exactly what that statement means, but I think it suggests that I've been in some important places with important people.

It's true. In spring 2018, I had the good fortune of traveling to important places. For example, on National Agriculture Day, I was in the nation's capitol. I happened to be among the group that was visiting Washington D.C. as part of the Kansas Farm Bureau's biannual county leaders trip. We had the opportunity to learn about key issues, tour historic sites, and visit our legislators.

We were fortunate to be able to hear directly from Rep. Roger Marshall and Senators Pat Roberts and Jerry Moran. Senator Roberts, the only man to chair both the House and the Senate Agriculture Committees, even hosted us at an Ag Day reception in the Senate Agriculture Committee hearing room.

I came away from this trip with three conclusions: One, our Kansas members of Congress are working hard for our interests; two, the history of our great country is tremendous and nowhere is more awesome than Arlington National Cemetery; and

three, not all metal detectors are created equal. It seems I went through a million of them, and each one seemed to be set differently.

Not long after the D.C. trip, I was at the statehouse in Topeka. The Kansas Chapter of the Western Music Association put on a free noon-time music show inside the state Capitol building. A couple months earlier, we had been at the statehouse to promote the Kansas cowboy poetry contest. Apparently a bunch of guys in hats and boots are noticed in the crowd. When people asked what we were doing at the Capitol and heard we were with the Western Music Association, they asked, "Will you sing?" After several people asked, we decided that maybe we should.

So, with help from our friends at the Kansas Department of Wildlife, Parks and Tourism, it was arranged for us to do a free concert on April 3 in the second floor rotunda at the statehouse. What a beautiful setting! The Capitol is a historic building, filled with gorgeous murals and monuments. Several murals show the agrarian roots of Kansas. Images of old-time farmers and farm families can be

found on the walls. One scene showed longhorn cattle being loaded onto the railroad. The fiery visage of John Brown oversees the east wing. Another mural featured the explorer John C. Fremont. This year marks a special anniversary of his explorations in Kansas, and we'll learn about that in a future column.

We had performances from excellent musicians, which certainly didn't include me. Award-winning artists such as Barry Ward,

Annie Wilson, Carl Reed, Jeff Davidson, and Del Shields all sang. I served as emcee. Kansas WMA Chapter president Orin Friesen spoke about the purpose of WMA, which is to promote the music and poetry of the American West. We finished our show with everyone joining in to sing *Home on the Range*.

It felt good to sing our state song in the Kansas Capitol, with legislators hurrying around on important business. I felt like I was in tall cotton.

Cowboy at the Capitol

By Ron Wilson, Poet Lariat

When a cowboy walks into that massive statehouse dome, It evokes an awesome feeling that we just don't get at home. Visitors enter at an entrance which leads to a lower floor, Where we see the massive stones from which our fathers built before.

Upstairs it is immaculate. It is clean and well-maintained, With murals, plaques and monuments which signs and guides explained. Amid all this rich, deep history, this is a still a place of work, In which legislators hurry, all their duties not to shirk.

They have caucuses and sessions, hearings and committee action, Plus talking to constituents who demand their satisfaction. They respond to calls and messages, or emails someone wrote,

And then have to make some choices when it's time to cast a vote. But in all their work and struggle,

I hope they don't forget All the history and beauty of the place in which they set. As for me, I'm just a cowboy.

I'm amazed at what I see, At the rail in the rotunda as I soak up history. I stare up at the dome, with awe upon my face, Thinkin,' "Man, you could stack a lot of hay inside this place."

Happy Trails!
www.ronscowboypoetry.com
© Copyright 2018

Argentina cattle herd will shrink by 1 million

Argentina's herd will shrink by up to 1 million head of cattle next year as ranchers facing the worst drought in decades decide to slaughter females, according to Reuters.

The drought has cut 40 percent off overall grains production and will knock off an estimated 0.7 percent from Argentina's GDP this year.

Slaughtering more

females will have long-term repercussions on the cattle herd at a time it was hoping to boost sales abroad. Read more from Reuters at tinyurl.com/Reuters-ArgentinaCowHerd.

NCBA lays out principles for regulating fake meat

NCBA recently sent official comments to USDA outlining key principles for the regulation of fake meat products. The comments encourage USDA

to look beyond modifying "standards of identity" in order to provide adequate protection for beef producers and consumers.

NCBA's principles are

designed to effectively address both plant-based and lab-grown imitation beef products. Specifically, NCBA:

Requests that USDA work with the Food and Drug Administration to "take appropriate, immediate enforcement action against improperly labeled imitation products." Urges USDA to "assert jurisdiction over foods consisting of, isolated from or produced from cell culture or tissue culture derived from livestock and poultry animals or their parts."

SPRING CONSIGNMENT PARKING LOT

AUCTION

THURSDAY, APRIL 26 — 5:00 PM

2049 Fort Riley Blvd. — MANHATTAN, KS

Time for our Spring Consignment Parking Lot AUCTION!

Collectibles, tools, furniture, refrigerators, stoves, toys, camel back trunk, dressers. two large trailers of plants, shrubs and trees **AND MUCH MORE.**

Auctioneer's Note: Keep watching website and our Facebook page for more updates. **MERCHANTISE KEEPS ROLLING IN.**

TERMS: Taking cash, good checks and credit cards. 10% buyers premium. Selling as is where is with no warranties implied. Announcements made day of sale take precedence over previous printed materials. Not responsible for accidents



Jeff Ruckert, Broker/Auctioneer
Manhattan, KS 66502
785-565-8293
jctt.97@gmail.com

www.RuckertAuctions.com
& Check us out on Facebook



FARM for SALE!

177.5 ACRES +/-
KAW VALLEY

BOTTOM GROUND
SHAWNEE Co. KS!

000 MAPLE HILL RD. SALE PRICE: \$1,037,640

177.5 Acres +/- Kaw River Bottom Ground between the city of Maple Hill & Rossville, Kansas.

- * 124.5 Acres +/- Irrigated tillable crop ground features Reinke Pivot Irrigation system with end gun and newer John Deere Engine + 2 wells
- * 26.7 Acres +/- Dry Land tillable crop ground
- * 18.5 Acres M/L of hunting and fishing along the Kansas River and access and along the west bank of Bourbanais Creek.
- * Wildlife habitat includes deer, turkeys & flatheads (5+/-Ac. waste)
- * Easy Paved Road access on Maple Hill Road

Also Available SUNFLOWER MLS # 198700: 124.5 +/- ACRES for \$632,500

Property Listed Exclusively by:

The HESSE REAL ESTATE GROUP

Anne Hesse: 785 - 845 - 6617

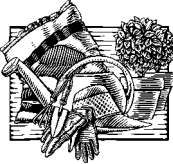
Scott Hesse: 785 - 554 - 5440

email us: HesseRealEstateGroup@gmail.com

HAWKS

REAL ESTATE PROFESSIONALS
1225 SW HARVEY ST. Topeka KS 66604
785-783-8338 www.HawksRealEstatePros.com





Yard & Garden Tips

By
Gregg
Eystone

Spring Container Gardening

The recent weather is an example of why I like to grow plants in portable containers. When it is cold outside, I can move them indoors. I can put them in full sun to start the season and move them to shade if it gets too hot. The porch or garage can be used to protect them on the really windy days or occasional hailstorms.

Gardening in containers will require watering and fertilizing differently than in the ground. It is easiest to grow plants in a potting media that is light and well-drained. That means it won't store water and nutrients. These will need to be added regularly.

Potting media may come with fertilizer already added. A slow release product can be mixed into the media at planting. Compost could be added but it is a guess on the amount due to differences in compost.

Products list a range of time that the fertilizer lasts. This is a guide but not an exact measure. It may be only half as long as indicated. The gardener needs to monitor the growth and health of the plants. Additional slow release or liquid fertilizer can be used for the remainder of the season.

All kinds of plants can be grown in containers. I grow mainly herbs, vegetables and flowers. I have also grown fruits like strawberries and raspberries.

Salad greens work really well in containers. They are easy to harvest and stay clean. It takes me quite a bit of time clean-

ing my lettuce and spinach from field-grown crops.

Crops that we eat from underground plant parts are favorite of mine for containers. Carrots make straight and lengthy roots in a container. I like to grow a few potatoes in a container for new potato harvesting. The growing media allows for multiple harvesting while the potato grows.

K-State Research and Extension has publications to assist with planting containers. They are "Growing Flowers in Pots" and "Growing Vegetables in Pots." Stop by the office or go online at www.ksre.ksu.edu under bookstore.

You can find out more information on this and other horticulture topics by going to the Riley County, K-State Research and Extension website at www.riley.ksu.edu. Gregg may be contacted by calling 785-537-6350 or stopping by 110 Courthouse Plaza in Manhattan or e-mail: geyeston@ksu.edu.

Let the

CLASSIFIEDS

work for you

place your

ad today

GRASS & GRAIN

1531 Yuma

Manhattan, KS

785-539-7558

Don't forget

to call or go

online at

grassandgrain.com

FARM MACHINERY AUCTION

SATURDAY, MAY 5, 2018 — 10:00 AM
AUCTION LOCATION: Sylvan Grove, KS; Exit 209 on Interstate 70, go 1 1/2 miles South to Ave. D (blacktop), 3 miles East on Ave. D to 9th Rd, then South 3 1/2 miles. Auction is on East side of 9th Rd. OR, from the Jct. of Hwy K-156 & 40 go West 6.7 miles on Hwy 40 to 9th Rd, then North 2 miles to Auction site. **WATCH FOR SIGNS.**

TRACTORS, COMBINE, TRUCKS, GRAIN CART (Starts at 1 p.m.)

1993 Ford Versatile 846 tractor, 6055 hrs, 230 hp, 1,000 hrs on tires, Trunions replaced 3 yrs ago, new AC comp. May 2017, 4 hyd., air ride seat 5 yrs, serviced regularly, very good cond., shedded; **1995 Case IHC 2188 Axial Flow Combine**, new tires, rebuilt trans. 2016, complete feeder house modification 3 yrs ago, 4 yrs on Beater, 3195 eng. hrs, 2494 sep. hrs, always shedded; **1995 Case IHC 1010 Rigid 30'** header; **2009 Cimarron** tandem axle header tractor; **1966 Chevy C-60 truck**, 366 eng., 5 & 2 spd. trans., good rubber, grain box 15' 5", 40" side, metal floor, rollover tarp, 59,531 miles; **"UFT"** United Farm Tools 575, hyd. driven grain cart; **1991 International 7100 Truck Tractor**, DT466 IHC eng., 7 spd trans., good rubber, 180,598 mi; **1987 Doonan 20'**, 600 bu. grain trailer, rollover tarp; **1959 Case 800** Case-o-matic tractor, dsl, 2 hyd.; **1958 Massey Ferguson 65**, 3 pt., Case 70 front end loader, rear hyd. pump, 7' bucket, good rubber; **1975 Shuster** GN grain trailer, grain box, 16' 40" sides, metal floor, hoist; **1965 Ford F-600 truck**, 330 eng., 4 & 2 spd trans., good rubber, grain box, 13.5' 40" side wood floor, new style tire rims, 40,544 mi.

PLANTERS, TILLAGE EQUIP. 1992 Great Plains Grain Drill w/fert. attach., 24' 8" spacing, 9947 ac. planted, good cond., always shedded; John Deere 7200 8-row planter w/fert. marker, trash whips, soybean/milo plates, new elect. pump, 250 monitor, fertilizer regulator & more; Buffalo 6-row planter, new points, milo, soybean & corn plates, new bearings; John Deere 5x14 plow; Sunflower 24' offset 1433 disc, 100 ac. on new disc blades; Kent Series V field cult. - harrow, good cond.; 3 pt. 200 gal. 25' field sprayer; Wikomi seed broadcaster, 3 pt.; Sunflower 25' undercutter, anhyd. control; Miller 445 Soil saver, 13 shank; White 14' offset disc; Krause 14' chisel; JD 4 section rotary hoe; Land Pride RC 6010

Lunch Stand by Wilson Winners 4H Club.

NOTE: LOADER TRACTOR WILL BE AVAILABLE DAY OF SALE. If you are unknown to Auction Company, please bring letter of referral from bank and picture ID to obtain bidding number. Any statements made the day of sale will take precedence over printed matter. **Terms:** Cash. Must have picture ID to obtain bidding number. No property removed until settled for. Not responsible for accidents.

SELLERS: DON HUNTER LIVING TRUST
Wilson, KS • For more info, contact Roger Hunter at 785-420-0453

MEITLER AUCTION SERVICE
Ken Meitler, Auctioneer • 785-526-7266, 785-420-0605, cell 308 North Main, Sylvan Grove, KS 67481

rotary mower, 540 pto, 10'; JD 2-row cult.; Massey Ferguson sm. sq. baler w/4 cyl. Wisconsin eng., patent #RE 23582; 6"x30" grain auger w/gas eng.; 4 cyl. Wisconsin eng., 28 hp; 500 gal. propane tank; 5 JD 4020 rear wheel weights; 3) 300 gal. fuel barrels; 4-wheel hay trailer; 3 pt. shop made wood splitter, hyd. cyl.; Ford 2 wheel pickup trailer.

ANTIQUE TRACTOR, PICKUPS, CARS, WAGON PARTS

1940 or 41 John Deere 'A' tractor; 1935 Dodge pickup tailgate; 1968 Oldsmobile car, 455 eng., auto, 81,000 mi, good int., shedded; 6 Model T coils; old license plates; 1936 Plymouth car, hub caps; 1949 GMC 3/4 ton pickup, 6 cyl., (salvage or restore); 1979 Chevy 1/2 ton pickup, 350 V8 eng., 40,000 on eng./trans.; running gear for header box, steel wheel; 4-wheel surrey; 1964 Chevy 1/2 ton, 4 spd, 235 eng., 46,500 miles; IHC dump rake; Wooden wagon wheels, 45" & 54"; Grain wagon running gear.

ANTIQUES

Drill press; post vise; old hand tools; Model T jack; The canteen corn sheller, wood; 3 cream cans; sev. old bicycles, 1909 & 1930s; pitcher pump; child's metal lawn chair; chick brooder; barn hay hook; single & double trees; horse collars; hames; harness; rotary lawn mower; wood chicken crate; 2 American gas ranges; wash tubs; The Great Majestic wood/cookstove; Siegler Kero. heat stove; ammo boxes.

SHOP & MISC.

AMOCO 30 gal. 1,000 Hy-Tran. fluid; oil filters; Maxus Camp-bell-Hausfeld air comp.; Marquette arc welder; lg. tap & die set; pipe die 1"1 1/2"; JD battery charger; oxy-acetylene torch set; Weather Guard pickup toolboxes, side & crossed; 1 ton chain hoist; 4020 Cozy Comfort; 6 elect. poles; North Star 540 PTO, 13,000 KW generator on 2-wheel trailer; Plus other misc. items.

CAMPER, 3-WHEEL TRIKE 1976 Mobile Traveler, self contained pickup camper; 1980's Carl Heald Hauler 3-wheel Trike, dump bed, 10 hp.

THIS IS A WORK IN PROGRESS, MORE ITEMS ARRIVING DAILY

LONNIE WILSON'S CONSIGNMENT AUCTION

SATURDAY, APRIL 28, 2018 — 10:00 AM • 601 South Broadway, Salina, KS

Guns will sell at noon. ACCEPTING CONSIGNMENTS until Thursday, April 26, 2018

Sellers include: Eldorado National, Certaineed Manu, Auto House, Great Plains, Luminous Neon, Reece Construction

MOTORHOMES, CAMPERS: 2000 Winnebago Chieftain 36 L class A motor home on Freightliner chassis, 300 Cummins diesel pusher 18,407 miles, diesel generator, 1 slide, fiberglass top, driver's side door, full privacy curtains, 2 TVs, 2 ACs, water heater, large shower. Sharp convection oven, propane/electric refrigerator/freezer, full basement storage, always shedded, great condition * 2009 Cougar by Keystone mod.3185AB 5th wheel camper, Polar package, 3 slides, awning * 1984 Winnebago Itasca Sunflyer mod. ICA27RU class A motor home V8 7.4L engine * 1990 Chevrolet Diesel 60 Thomas school bus 8.2 litre diesel (500 cu in) engine 45,037 miles tagged as RV (interior set up as camper) w/wood burning stove * 2009 Wildwood LE Sport mod. 26 FBSRV toy hauler w/awning.

CLASSIC CARS: 1966 Cadillac DeVille 2-door convertible, 08896 miles on odometer, great condition * 1976 Triumph Spitfire 1500 convertible 16k miles.

TRUCKS, TRAILERS: 1998 Volvo semi-tractor twin screw w/integral sleeper * HD implement trailer tandem axle duals all around 24' (19' flat deck 5' beavertail) w/ramps * 1958 Ford farm truck w/hoist, 16'4" bed w/metal floor & 40" side walls * 32' triple axle trailer, beaver tail floor, ramp rear door, curb side door, roof access hatch w/ladder, built-in work bench & tool boxes with winch underneath, 2 outside compartments, air compressor, generator, AC (not working), (2) electric tongue jacks, carefree awning * 10' x 6' enclosed trailer rear swing doors, curb side door * Landgrebe Mfg mod. TD-40 tow dolly * unknown maker tow dolly * boat trailer frame * 1978 Ford F600 farm truck w/hoist 16' steel bed w/42" sidewalls.

SEMI-TRAILERS & TARPS: 1989 Fruehauf semi-trailer 45' x 96" (storage) * 1989 Trailmobile semi-trailer 48' x 102" (storage) * 1989 Fruehauf semi-trailer 40' x 96" (storage) * 1990 Talbert dropped deck equipment semi-trailer * 6 pallets of truck tarps marked steel – lumber – smoke from Great Plains Trucking *

CRANE – BACKHOE TRENCHER: 1981 FMC Link Belt Eighty Series mod.HSP-8018 serial # 47H1-575 18-ton carrier mounted hydraulic crane 4-53 Detroit engine AT-545 Allison transmission 17 ft outrigger spread 8 ft wide carrier 60 ft main boom 20 ft fly will demo sale day free delivery within 90 miles radius of Salina * CASE 360 Diesel Backhoe Trencher 1972 hours.

FORKLIFTS, SKID STEER EQUIPMENT: Kamatsu LP forklift hard rubber tires * forklift extensions 8' long * Sweepster mod. SB72C 6' skid steer mount broom.

TRACTORS, IMPLEMENTS: 2007 John Deere 4520 tractor w/font wheel assist 629 hrs eHydro w/John Deere 400X loader 72" bucket * 3-pt Land Pride RCR 1872 rotary mower * 1996 Zetor mod. 4340 tractor 57.2hp 662 hrs w/cab & heater, power steering, 3-pt hitch, PTO direct/indirect with Bush Hog 2445 front loader 6' x 30" bucket * King Kutter 6' finish mower * Farmhand F-11 front loader * 3-pt post hole digger 9" auger * 3-pt post hole digger w/12" & 9" augers * Farm Star 3-pt post hole digger w/auger * 3-pt 5' wide rotary mower * Gleaner grain wagon. **FARM EQUIPMENT: (80) panels 20' x 46" 6-bar galvanized continuous fencing w/connectors * (20) 12' portable corral panels * (2) aluminum tread plate tool boxes * fuel tank * 16' x 9' auger * 15' tall decorative windmill * (8) steel barrels * 12' x 7' dog run * Winkel truck bed w/headache rack, tool boxes, gooseneck ball in bed, air lift bale carrier * (6) 500 gallon propane tanks * (6) telephone poles approx. 17' to 19' * (16) hedge posts approx. 7.5' to 15' * shallow stock tank * L-shaped fuel tank w/manual pump * Fimco sprayer w/large hose reel & hose * J feed bunk * (3) 100 gallon propane tanks.**

CARS, PICKUPS: 2006 Mercury Monterey van V6 4.3L engine * 2006 Chevrolet Cobalt 2-door 4-cyl 2.2L L4 DOHC engine * 2004 Ford Freestar van V-6 3.9L engine only driver's seat, no other seating * 2004 Ford Freestar van V-6 3.9L engine front driver's & passenger seats, no rear seating * 1995 Dodge RAM 1500 V8 Magnum 5.2L engine extended cab pickup * matching 10' x 6' enclosed trailer rear swing doors, curb side door * 1991 Ford E-250 Ford service van, V8 5.8L engine, only 26,925 miles (was undercover DEA surveillance van, many lights, switches, controls still in rear compartment), new tires * 2002 Ford Windstar V6 3.8L engine * 1997 Ford Expedition 5.4L V8 16V SOHC EFI engine 4wd * 1992 Chrysler New Yorker Fifth Avenue sedan w/Landau roof V6 3.3L engine 117k miles *2004 Dodge Ram 1500 crew cab pickup V8 4.7L engine * 1981 H-M-Vehicles Freeway III micro-car * 1974 Chevrolet Camaro body (no engine or transmission).

BATTERIES - TIRES – RIMS – SEATS - PARTS: BATTERIES: (135) top post, (19) side post NEW batteries Eldorado pulled from new vehicles and upgraded. **TIRES & RIMS:** 17" – 18" – 20" used tires, larger groupings include (4) Toyo M-55 LT265/70R17 * (4) Cooper Discover R/T3 LT265/70R17 * (3) Goodyear Wrangler LT265/70R17 * (4) Bridgestone Duravis M700 LT265/70R17 * (4) Cooper Discover A/T3 LT265/70R17 * (4) Wild Country Radial TXX LT265/70R17 * (4) Bridgestone Dueler H/T R255/70R17 * (4) Firestone TransForce AT LT265/70R17 * (4) Cooper Discover S/T LT235/80R17 * (4) Goodyear Wrangler 275/65R18 * (4) Ironman All Country A/T 275/65R18 * (4) Goodyear Wrangler LT275/65R18 * (4) Cooper Discover LT275/65R18 * (4) Goodyear Wrangler LT275/65R20 * (4) LTR Max 275/60R20 (4) Michelin LT275/65R20 * lots of other sets/3, pairs, singles * set/4 Gear rims w/Nexen 305/45R22 tires * set/4 Mastercraft Courser A/T LT 265/75R16 tires on rims * set/4 Firestone FT455 Plus radials 285/75R24.5 * set/4 Dunlop SP384 11R22.5 on 10-bolt rims * set/3 Michelin XZY3 385/65R22 * set/6 General LMT450 225/70R19.5 like new on rims * asstd semi-truck tires (3) Firestone implement tires 12.5L-16 on 9-bolt rims. **SEATS:** Appx (80) NEW van & truck seats (standard seats Eldorado pulled from new vehicles and upgraded). **PARTS:** 5th wheel bed mount hitch * 5th wheel hitch.

BOATS, JET SKIS: 1996 Bayliner Avanti 3258 – Fresh Water Boat – 30' 5" long – 11' Beam – Pair, 7.4L Bravo III Mercruisers, - 4.5BCG 614 Westerbeke Generator – Lewmar V700 Windless – Atwood electric water heater – Electric flush pump – Dual Helm, Flybridge and cabin – Bimini top on Flybridge – Windshield wipers – Remote control spotlight – 4 Fender holders w/fenders – In line style, Galley kitchen W/2 burner Electric/Alcohol stove, Microwave, Under counter refrigerator, sink & lots of storage – Climate control heat and air – Head w/Macerator pump & stand up shower - (2) state rooms, double bed mid cabin & queen size V-Berth forward cabin – Sleeps 6 plus 2 can sleep on Flybridge – Radio w/CD player Flybridge and Cabin – TracVision antenna mounted on Radar Arch – Radar Arch has been hinged to lay down for towing – Window & door snap on covers – New in the box, snap on cover for Flybridge – All cushions for the Flybridge have been recovered – 4 dock lines – Power cords for shore power – Includes 4 axle all Aluminum custom built trailer. * 1989 18' Euroline 195 fish/ski boat w/120 hp Force outboard, has fishing platform in bow, Sidefinder Bottom Line Tournament Pro depth finder, Minn Kota All Terrain trolling motor 36 lbs thrust, 1990 Yacht Club boat trailer w/tittle * 1995 18' Quantum bass boat with 1994 115HP Evinrude outboard motor, Hummingbird Piranha MAX 220 60 degree dual beam fish finders, Motor Guide trolling motor & single axle trailer * 1986 20' Sea Arrow bow rider ski boat w/350hp Chevy inboard/outboard & tandem axle trailer * 2001 Sea-Doo Jet Ski (this was a KDOVPT unit, running condition) and trailer * 1992 Crown Line 21' cabin cruiser w/454 Magnum Mercruiser Bravo One outdrive & Power Trim XD (right motor model broken) and trailer * 2000 19' Nova pontoon boat w/water glide accessory 90hp Johnson outboard & trailer * 1991 Conquest 18' long IB-OB needs repair w/single axle trailer * 15.5' Thunderbird Shawnee model fish & ski boat w/Johnson 60 hp Super Sea Horse outboard & trailer * 16.5' 4Winns by Saf-T-Mate bow rider ski boat w/Mercury 90hp outboard & trailer * Mark Twain mod. 160T I/O bow rider ski boat w/Mercruiser 120hp inboard motor & trailer * 90 HP Mercury boat motor less than 100 hours * 15' Alpeh bow rider ski boat w/55hp Chrysler outboard & trailer * 16' aluminum boat w/7.5hp Mercury outboard & trailer * Johnson Sea Horse 5hp outboard motor * Evinrude, Scott-Atwater 7.5hp antique boat motors.

ATVS: Kawasaki mule frame with 1000cc Harley Davidson motor, kick start, winch on front * 2014 Polaris 550 ATV w/power steering * 2009 Polaris Ranger RZR S w/S-800 EFI engine & winch 1788 miles.

MOTORCYCLES: 2003 Suzuki motorcycle 750cc, 17354 miles, shaft drive, custom paint * Honda Express motor bike 49cc * antique Stadion motorized bike.

MOWERS, YARD EQUIPMENT: Heckendorn 3-deck riding mower * Heckendorn 1-deck riding mower * Snapper RT8S rear tine tiller * Plow horse 500 front tine tiller power reverse 5hp * Snapper RT8S rear tine tiller * Troy-Bilt Super Bronco riding mower Kohler 20hp engine automatic transmission 46" deck needs work * FIMCO sprayer * Homelite Back Packer leaf blower * Hydro-Quick sprayer * Stanley plastic tub 2-wheel wheelbarrow * Rubber Maid dump garden cart * FIMCO sprayer on trailer * hose reels * Weber smoker * Husqvarna 235 string trimmer * 2014 Huskee 35-ton log splitter * Town & Country garden cart * (4) soil saver composters * Stihl 011 AV chain saw w/electronic quick-stop * Snapper riding mower 14hp B&S engine (needs work) 38" cut * Billy Goat Pro Series power rake w/Robin Subaru 6.0 EX17 engine * Billy Goat 33" triple blade walk-behind commercial mower 5-speed w/reverse, grass catcher & Intek 13hp engine * Stihl FS55R string trimmer.

GUNS, AMMO: Sharps 50-70 cal w/saddle ring ser # C8796 * Murdock & Morrison 1863 Civil War percussion cap rifle has TX star carving on stock brought to Kansas by confederate soldier connected to Hatfield family * T Davidson & Co 36 cal percussion rifle w/octagon bbl * Savage mod. Axis 22-250 REM cal bolt action rifle w/BSA 4-20x40 scope appx 50 rds shot thru gun ser # J654801 * Ruger mod. American 270 WIN cal bolt action rifle w/TASCO 3x9 scope appx 20 rds shot thru gun ser # 693-2318 * Connecticut Valley Arms black powder 50 cal side lock octagon bbl kit gun ser # 861527 * Browning mod. Sweet 16? 16 ga semi auto shotgun made in Belgium poly choke ser # X11763 * Marlin mod. FL 81-DI 22 S-L-LR cal bolt action rifle w/Veaver scope ser # N/A * Pioneer mod. 23 22 S-L-LR cal bolt action rifle made for Gamble stores 22" bbl ser # N/A * Stevens mod. 820B 12 ga pump shotgun ser # N/A * Mossberg mod. 500A 12 ga pump shotgun vent rib 2-3/4" & 3" shells ser # J663942 * Colt mod. AR-15 223 cal semi auto rifle w/sling ser # LSL004144 * Marlin mod.336 30-30 WIN cal lever action rifle ser # 23056621 * Diamondback Firearms mod. DB10 308 WIN cal semi auto rifle w/6-24 x 50 AOE scope w/extra mag & bullets ser # DB-3903128 * Winchester mod.1911 SL 12 ga semi auto shotgun full choke bbl ser #A.68865 * Ruger mod. 10/22 Wild Hog 22 LR cal semi auto rifle NIB ser # 0009-69431 * Henry mod. H006M 357 MAG/38 Spec cal lever action rifle octagon bbl ser # BB0043907M * 12 ga side-by-side shotgun 30" bbl dbl trigger missing hammer * Smith & Wesson mod. SD9VE 9mm semi auto pistol 4" bbl w/extra loaded mag & holster ser # FYD4347 * Beretta mod.BU9 Nano 9mm semi auto pistol w/holster & extra loaded mag ser # NU083982 * Colt mod. 1902 38 cal revolver ser # 6405 * Smith & Wesson mod.? 32 WIN cal revolver ser # 11405 * H&R mod.? 38 cal revolver ser # N/A * Enfield mod.1917 220 Swift cal bolt action rifle w/Simmons 3-9x40 8-point scope & sling ser # N/A * Rockfield Armory mod. M1911-A/FS 45 ACP cal semi auto pistol ser # R1A1222552 * Rossi/Bratztech mod.971 357 Mag revolver ser # E0372917 * U.S. Remington mod.03-A3 40-06 cal bolt action rifle ser # 4086906 * Remington mod. Sportsman 58 12 ga semi auto shotgun ser # 3124V * H&R mod.088 12 ga single shot shotgun ser # AZ556885 * H&R mod. Standard M48 12 ga single shot shotgun ser # E28169 * Remington Woodsmaster mod. 742 30-06 cal semi auto rifle ser # 7317752 * Iver Johnson mod. Champion 12 ga single shot shotgun * JC Higgins mod.5838 16 ga bolt action shotgun ser # N/A * Rossi/Bratztech mod.5201220 single shot w/20 ga bbl & 22 LR cal bbl NIB (still in grease, never assembled) ser # 5D203229 * Weatherby/Japan mod. Centurion 12 ga semi auto shotgun vent rib full choke bbl ser # NA02781 * Taurus mod.TCP 380 ACP cal semi auto pistol ser # 53176A * Cobra mod.C22M 22 Mag cal 2-shot derringer NIB ser # 118305 * SCCY mod.CPX-2 9x19mm semi auto pistol ser # 571452 * ISSC / LSI mod.M22 22 LR cal semi auto pistol ser # A07624 * Remington mod.870 12 ga pump shotgun NIB ser # RF28857A * Smith & Wesson mod. 509VE 9mm semi auto pistol w/extra mag NIB ser # FZT2913 * Ruger mod. American 308 WIN cal bolt action rifle w/3x9 Nikon scope ser # 694-47499 * Ithaca mod.37 20 ga pump shotgun full choke bbl ser # 477179-4 * Marlin mod.99 22 LR cal semi auto rifle ser # 68-56910 * Mossberg mod. Silver Reserve II 20 ga over/under shotgun vent rib ser # SR20007282 * Eagle Arms – made in Italy mod. Companion 20 ga single shot shotgun vent rib ser # 59509 * Heritage mod. Rough Rider 22 cal revolver w/extra mag cylinder ser # T59927 * Taurus mod. PT738 380 cal semi auto pistol w/3 extra mags & holster ser # 87376E * Savage Arms mod.11 243 WIN cal bolt action rifle w/Simmons 3-9x40 scope & sling ser # G158456 * Remington mod. 700 22-250 REM cal bolt action rifle w/4-12x40 scope camo ser # RR10489G * Winchester mod. 23 Heavy Duck 12 ga dbl bbl shotgun 30" bbls full chokes NIB 1 of 500 made ser # H0377E * Luigi Franchi Made In Italy mod. Brescia 20 ga semi auto shotgun vent rib imp cyl ser # C10604 * Ruger M-77 mod. Mark II 264 WIN MAG cal bolt action rifle w/Pine Ridge 6x18 scope ser # 7888-38537 * Ruger M-77 mod. Hawkeye 6.5 Creedmore cal bolt action rifle w/scope ring NIB ser # 712-18798.

INDUSTRIAL & CONSTRUCTION EQUIPMENT: R.K. Le Blond Machine Tool Co large industrial lathe 220v 3ph *Yushin RAIL-a-1300 Webliner automation robot * unknown machine, may be part of the robot before * very, very heavy robot base mount * HD shelving – (12) uprights 8' x 30", crossbars, shelf supports, decking * (100+/-) pcs 3" steel pipe, flanged, 6'8" long * (2) Smart Move containers 6' x 7' x 7'4" tall with door * (9) 10' x 22" work platforms w/side rails * (60+ 12' x 22" galvanized walk boards/ deck plates * (3) 19'6" teardrop uprights with (8) 8' crossbars * (2) 15'4" x 42" & (1) 12'4" x 42" teardrop uprights with (8) 9' crossbars * (82) 7' slotted crossbars & braces * (6) 12' x 42" teardrop uprights with (20) 8' crossbars * (5) 12' x 42" teardrop uprights with (16) 8' crossbars * small group racking * roller machine 1/41hp 115/230v * welding cart w/gauges/hoses/torch for large bottles * Lincoln Idealcar 250 welder w/leads * Lincoln Idealcar SP-250 welder w/ leads * Western Arctronics mod. 15KVA spot welder * Whitney-Jensen punch machine * Lock Former * Emerson metal cutting horizontal band saw * Weldanpower – 130 w/Kohler engine * Industrialex pallet jack 5500 lb capacity w/load back rest * 2008 Multiquip mod.MC64 trailer mounted concrete mixer 6 cu ft w/Honda 8 hp engine.

STORAGE SHEDS: 7' X 8' Storage shed w/wall to wall carpet * 9' x 10' storage shed w/wall to wall carpet.

BUILDING SUPPLIES: 72 bundles 2 1/4 Red Oak flooring 21.26 board foot per bundle * 210 board foot rough cut Hackleberry * many rolls commercial flooring most 79" wide * Sterling furnace 36" x 80" insulated fiberglass wood edge entrance door w/glass insert new in crate * (3) step-in shower stalls * (139) 4x8x16 LW return concrete blocks * (2) 5-gallon buckets water proofing.

TOOLS: Wacker Neuson water pump 240cc Honda engine, hoses * Powerhorse 4000 generator 208cc engine * Rockwell mod.13 planer on stand 220v * Wacker P2 water pump 160cc Honda engine * Empire Abrasive Equipment sand blaster * Skil & Chicago Electric circular saws * B&D pad sander * Craftsman saber saw * Chicago Electric 4" angle grinder * Skil saber saw * drills * bench grinder * electric water pump * Sandusky rolling steel cabinet 46" x 78" x 24" * rolling tool or parts cabinet w/shallow drawers * rolling cabinet w/doors * Craftsman stacking tool boxes * Knipco 150,000 BTU space heater * (2) Dyna-Pro 210,000 BTU space heaters * Black Max 8125 generator Honda 13 hp engine * DeWalt 3750 PSI power washer * Oson Mfg horizontal metal cutting band saw * Craftsman 10" table saw on stand * Onan G.S. RV Gen set mounted on wagon * Sears Roebuck paint sprayer air compressor 2hp 100 psi * Champ Air Pro air compressor 3.5 hp 20 gal * Pro-Tech 8-1/4" slide compound mitre saw * Craftsman 2" x 42" belt – 8" disk sander/grinder 1hp * Pittsburgh Automotive 1-ton engine hoist * Intermatic by WM Brown twin piston air compressor 1-1/2hp 220v * Craftsman 12" planer 2.5hp 110v motor * Kobalt 7" bench top tile saw in box * Ridgid pneumatic coil nail gun.

RESTAURANT EQUIPMENT: (2) Beverage Air bottle coolers * Cornelius chiller w/7-button dispenser * stainless stands & cabinet * stainless steel rolling thermal cabinet * stainless lunch tray dispenser * Cambro cashier station * Scottsman Ice-Master ice maker * Hobart cooler 56" x 84" x 32" * True reach in coolers (1 sliding doors & 1 single door) * Amana Deepfreeze upright freezer * (2) Hobart refrigerator/freezer coolers 54" x 82" x 32" * (2) True keg cabinets * Howard 3-door cooler * Dixie Narco vending machine.

HOUSEHOLD APPLIANCES: GE stacking washer/dryer * Whirlpool black w/grey doors side-by-side refrigerator * purple Kitchen Aid Superba side-by-side refrigerator w/water & ice thru door * Kenmore matching front load washer & dryer, both stainless steel inside, stackable * Whirlpool matching washer & dryer * Florence vintage gas range * Maytag electric dryer * Coop Custom 17 chest freezer * Apartment size fridge * Kenmore 700 series gas dryer.

ELECTRONICS: Roland KC-500 stereo mixing keyboard amplifier * Vizeo 32" flat screen TV * Uniden Panasonic 42" flat screen TV * Washington base CB * Philips digital cinema sound center * Logitech sound system * Acer flat screen monitor * Trutech flat screen TV.

EXERCISE & SPORTS EQUIPMENT: (2) volley ball referee stands * Techrod (like bowflex) exerciser.

HEALTH CARE & INVALID EQUIPMENT: Aluminum modular handicapped ramp – 24' & 12' walkways, ramps, pylons on concrete bases, connecting platforms * Plus III Premier mobility scooter w/charger * NEW Braunability wheelchair lift * (2) Hill-Rom Century hospital beds * Invacare Tracer EX2 portable wheel chair * Nova walker w/seat.

COLLECTIBLES: Antique Monarch Brunswick-Balke-Collender Co Cimarron rosewood w/ivory inlay billiard table made before 1900 * (2) Coors Light 3-lamp pool table lights * antique typewriters collection – Oliver #5 Standard Visible, LC Smith Corona 10", Woodstock ball bearing single-shaft, Smith Premier, Remington Standard #10, Underwood Standard # 5, Royal, Royal, Underwood Noiseless, Remington Standard #7 w/hard cover, Remington Portable w/case, Corona Portable w/case, Hammond Multiplex w/case, Oliver Standard Visible Writer #3, Densmore #4 * collectible decanters by Beam, Ezra Brooks, McCormick & others * beer advertising – Coors light lighted sign, Pabst Blue Ribbon lighted sign, Budweiser 75th Sturgis tin sign, Bud Light/K-State tin sign * Approx. (60) pieces of Granite/Enamelware Multi-Colored * Cast iron banks and figurines * AB Chase Organ Co pump organ excellent condition.

FURNITURE, MISCELLANEOUS: (2) Elite Ultra pedicure chairs * (36) matching upholstered chairs w/tilt bases * (3) AV carts * Anderson Hickey 4-drawer later file cabinet * southwest pattern sofa * plaid sofa sleeper * dinette table w/4 rolling chairs * entertainment center * cabinet * (2) large bird/critter cages * large group wood furniture – benches, cabinets, dresser w/mirror, shelves, chairs, stands, drop-leaf table, small china cabinet, pedestal base table, sideboard * set/6 blond dining chairs * 3-cushion sofa * oak rocker w/cushions * set/5 dinette chairs * china & display cabinets * wall mount copper decorative hood 78" x 46" x 13" * glider rocker w/cushions * large lighted china cabinet * blond wood Duncan Phyfe dining table w/3 leaves, matching sideboard & china cabinet.



Wilson Realty & Auction Service

PO. BOX 1305, SALINA, KS 67401 • (785) 827-5563
 LONNIE WILSON - OWNER/BROKER/AUCTIONEER • (785) 826-7800
 DAVE HUNT - SALES MANAGER • (785) 201-5257
 CAROLYN HUTCHINS - OFFICE MANAGER • (785) 823-1177



Lonnie Wilson

Website & Contact Email Addresses: www.soldbywilson.com

For Latest Update & Pictures go to website:

[www.soldbywilson](http://www.soldbywilson.com)

Page 22

Grass & Grain, April 24, 2018

Cowboy Chatter

by Ralph Galeano

Stand Still

There's nothing more irritating than a horse that won't stand still when tied. We've held cow horse and reining clinics at our place over the years and when the clinics were over, I'd have to spend a half day going around filling holes where impatient horses had pawed the ground where they were

tied to a trailer. Those horses that do the pawing had not been trained properly when they were youngsters. The owners had let the bad habits persist and it didn't take long for those horses to become veteran hole-diggers. They developed the unenviable skill of digging holes because they were

allowed to get away with it. The horses used the same reasoning that dogs use when they ignore your commands to stop barking. If you let a dog keep barking when you tell him to shush, it won't take long for him to ignore your commands completely because he knows your bark has no bite, so he keeps barking while you keep yelling at him to stop. You must reprimand them in a way they will remember. Only then will they stop barking when you command them to stop. But we're not training dogs in this column, even though we all probably own a few of man's best friends. I own a couple Australian Shepherds that were given to me by Tom Ryan, a good horse trainer and breeder in Milsap, Texas. Tom picked up two female puppies and named one Tic and one Tac. When we picked up a mare from Tom's ranch, he gave us Tac. My wife liked Tac and decided we needed another one just like her. The breeder still had a few puppies left so we ended up with another pup that Sandy named Toe. So now there are three female litter mates named Tic, Tac and Toe. They are Blue Merle females and look alike. They only dig holes in the summer. They like to dig a hole and lay in the cooler dirt to get some relief from the summer heat. I let them

get away with it only because I want my friends to find some relief from the heat and they're not digging holes because they're impatient or irritated. Horses are another story. I will not tolerate hole-diggers in my string. There are a few ways to stop that bad habit and it fits in with a regular training schedule for colts. I usually start working with colts on the ground when they reach their first year. That includes a lot of handling, like lifting feet and holding them up until the baby gets used to having somebody pick up or rub parts of their bodies that they thought were their exclusive property. Sometimes it comes as a shock to them that someone has invaded their privacy and actually has the gall to touch them in places that they maybe don't like to be touched. A slow and easy approach to introducing youngsters to being touched and rubbed will pay big dividends as their training progresses. If they jump away when you try to rub their belly, then move your hands up their side where they might not be so touchy. Then slowly work your way back down a little at a time. Pretty soon they'll begin to accept your hand on their underside and may even consider it a pleasant sensation. It's important to make

sure they don't break loose the first time you tie them to something. If they rear back and break the halter, lead rope or the post they're tied to, they will try it again knowing they once gained their freedom by rearing back or struggling against the thing that's holding them. I have a stout post that's buried in the ground four feet and is big enough to withstand any abuse a horse can cause. I make sure the halter and lead rope are strong enough to hold a struggling colt. I tie them up high and watch them try to get loose. Some learn fast and others wear themselves out trying to break free but eventually they all find out they can't win and come to accept being tied as one of the things they have to endure until you turn them loose. If they learn they are tied and can't get free the first time you tie them, you won't have to worry about them breaking lead ropes, halters or the object you tied them to later in their life. Once you've convinced them not to fight being tied, they may decide to find other interesting things to do while tied to a post or trailer. They become bored and need something to occupy their mind. That's when they find out their hooves are good for other things besides walking or running. They learn to dig to pass the time or show their dislike of being tied to a post that never moves or nickers back to them. A simple way to teach a horse not to paw the ground is to hobble their front legs. First, you must teach a young horse to accept hobbles like you taught him to stand still when tied. Place him in a round pen or in a soft area where he will not hurt himself if he falls. Use a halter and lead rope so you will have control. Don't tie him to anything. He has to be free to try to move around. Place the hobbles on their front legs. They should stand still while you place the hobbles around their legs if you had properly de-sensitized them in early training. Leave the hobbles on and stand back and watch as they try to move their legs. Stay with the horse while they learn the restrictions of hobbles. It takes several sessions of putting the hobbles on and taking them off for the horse to learn to accept hobbles. They don't like to be hobbled and that is the basis of correcting the hole-digger. He can't dig a hole if he is hobbled. If your horse starts to dig a hole while tied, place the hobbles on and leave him tied with the hobbles on. Don't leave him alone while he is tied with hobbles. You must monitor him at all times. Take the hobbles off after a while and when he starts to dig again, put them back on. Take them off and then put them back on if he makes any attempt to paw the ground. You have to keep doing this until you convince him that he will be hobbled if he even thinks about digging a hole or pawing the ground while tied. In most cases, this will cure the hole-digger and if you train them this way when they are young, it will stay with them for a lifetime and you won't have to waste time filling holes.

Contact Ralph Galeano at horseman@horsemanpress.com or www.horsemanpress.com

GAO report shows supply and demand caused fed cattle prices to fluctuate in 2015

A report from the Government Accountability Office (GAO) showed that regular supply and demand factors — not competition levels among packers — was the cause of fluctuation in fed cattle prices nationally between 2013 and 2016. The report analyzed a GAO investigation regarding the price drop in fed cattle during 2015. For the report, the GAO reviewed economic data and USDA and Commodity Futures Trading Commission documentation; analyzed transaction data on beef packer purchases from 2013-2015; and interviewed recognized experts. The GAO recommended that USDA review whether or not price reporting groups could share daily data with the Packers and Stockyards Program. USDA did this and subsequently determined that the act does not allow for such sharing, and it would not be as useable citing concerns about the public's trust in the program.

AUCTION

THURSDAY, MAY 3, 2018 — 3:00 PM
All Day Showing Rain or Shine!
3400 E. Country Club Road — SALINA, KANSAS

Pickup, Mower, Tools: 1989 GMC Sierra ½ ton P/U with 81K, JD LA 115 Riding Lawn Mower w/Hydrostat, 42", Troy-Bilt sp mower, Cement Mixer, Shop fan, B&D Table Saw, folding ladder, 32' al. ladder, step ladders, galvanized grain scoops, sharp shooter, hand tools, garden tools, Homelite snow blower, Troy Bilt cycle mower, wheel barrow, Aerator, broadcast spreader, CM belt sander, el. planer, Makita recip. saw, Skil Saw, wood ladders, dm. lumber, 2 air compressors, Poulan chain saws, electric ext. tree saw, Makita weed trimmer, shop vac, jumper cables, Radio Flyer Wagon, log chains, gas cans, 4" vise, Dewalt cordless drill, tool hods, 1/3 hp Craftsman grinder, sockets, wrenches, tools, stack tool box, drills, bits, edger, hammers, sledge, axe, pipe wrenches, pitch forks, sharp shooter, tater fork, Toro electric blower, 250 bu. storage bin, silage fork, shingles, tar paper, kerosene heater, Small Safe. Antiques & Collectible: Steamer trunk, 3 gal. Red Wing crock, **SELLERS: SIL & ESTHER WEBER**
Go to KSAL.COM then Market Place and click on Auctions for full add & pictures
Announcements made day of sale take precedence. Not responsible for accidents.
BAXA AUCTIONS, LLC, 625 Sietz, SALINA, KS
PHONE: 785-826-3437 • Auctioneer: Mark Baxa

GRASS & GRAIN

YOUR AUCTION SOURCE

Never miss a sale! Subscribe today!

Toll Free: 877-537-3816

KEY FEEDS CATTLE MINERAL SALE:

Buy 20 bags and get 1 bag free!

Order by April 30 and ship by May 31 for free bag special

Key Feeds will custom mix your cattle mineral the way you want.

Choose any of the following additives:

• Chlortetracycline • Zinpro Availa 4 chelated trace minerals • MOS

3 choices of fly control:

Altosid, Justify or Rabon. • Cinnagar • Bovatec or Rumensin

One ton minimum order for bags or 2 tons minimum order for bulk. Delivery is available.

Fourth & Pomeroy Associates, Inc.

FEED KEY FEEDS

Joseph Ebert, VP

CALL KEY FEEDS TODAY

1-800-432-7423 OFFICE

Clay Center, Kansas 67432

Byron Thoreson • 785-630-0161

Rod Bohn, GM • 785-630-0846

MINNEAPOLIS LOCATION: James Carr • 785-630-0491

TIPTON LOCATION: Tim Wiles • 785-630-1049

JC LIVESTOCK SALES INC.

Wednesday Sale, Hogs NOON • Cattle 12:30 PM

Report from April 18, 2018:

STEERS			HEIFERS		
2	308	192.00	12	508	150.00
6	408	185.00	10	557	145.00
24	480	183.00	5	597	137.00
7	513	178.50	17	631	135.00
9	567	170.00	7	723	130.50
11	615	166.50	2	770	124.00
9	657	161.00			
13	733	153.00			
31	796	146.50			
58	872	130.75			
53	924	127.00			
57	968	125.25			

TOP BUTCHER COW:
\$66.00 @ 1,648 lbs.

TOP BUTCHER BULL:
\$83.00 @ 1,940 lbs.

BRED COWS:
\$800-\$1,075

CLAY CENTER LIVESTOCK SALES INC.

Cattle sales Tuesday, 11:00 AM.

Report from April 17, 2018:

STEERS			HEIFERS		
3	323	204.00	9	517	147.00
4	428	187.00	16	580	141.00
4	490	182.00	5	650	135.00
7	521	177.00	11	698	131.50
7	608	171.00	28	712	128.75
22	612	160.50	16	789	124.00
14	751	147.00	10	839	123.75
3	800	135.00			
10	864	130.75			
31	925	119.85			

TOP BUTCHER COW:
\$66.50 @ 1,250 lbs.

TOP BUTCHER BULL:
\$83.00 @ 1,940 lbs.

BRED COWS:
\$750-\$1,450

Due to publication timing of Grass & Grain, please check our Facebook page - Junction City and Clay Center Livestock Sales - for up to date consignments & videos.

If you need assistance in marketing your cattle please call & we will be happy to discuss it with you.

JUNCTION CITY, KANSAS • Barn Phone 785-238-1471

Seth Lauer 785-949-2285, Abilene

KARL LANGVARDT
Cell: 785-499-2945

MITCH LANGVARDT
Cell: 785-761-5814

LYNN LANGVARDT
Cell: 785-761-5813

EMPORIA LIVESTOCK SALE CO.

Bonded & Insured

SALE EVERY WEDNESDAY IN EMPORIA, KANSAS AT 11:00 AM

620-342-2425 or 800-835-7803 toll-free • Fax: 620-342-7741

Date: 4/18/18. Total Head Count: 1208. COWS: \$62-68; \$55-\$61.75; \$54 & down. BULLS: \$80-\$86, light test.

BULL CALVES		BRED COWS		HEIFERS	
3 blk	362@176.00	9 mix	526@161.00	4 blk	341@169.00
3 blk	395@176.00	6 blk	1230@1100.00	7 mix	387@158.00
9 blk	488@189.00			14 blk	414@162.00
27 bkbwf	454@188.00			3 mix	425@160.00
9 mix	443@172.00			3 blk	447@159.00
3 blk	467@172.00			3 blk	472@159.00
4 blk	438@166.00			33 bkbwf	495@159.00
3 bkbwf	477@165.00			7 mix	442@156.00
11 blk	564@174.50			5 blk	418@154.00
20 mix	552@174.25			4 mix	490@152.00
4 blk	516@170.00			6 blk	464@150.00
7 blk	552@170.00			4 blk	471@145.50
5 mix	514@164.00			3 bkbwf	490@144.50
8 mix	536@158.00			5 blk	562@155.00
3 blk	550@155.00			6 mix	565@154.00
5 mix	523@158.00			7 bkbwf	567@154.00
3 mix	525@155.00			9 blk	573@150.00
11 blk	615@172.00			11 mix	502@148.00
6 blk	605@170.00			5 mix	525@147.00
3 bkbwf	608@168.00			3 bkbwf	567@145.00
14 blk	673@155.00			4 mix	578@144.00
4 blk	711@147.00			5 mix	519@143.00
3 blk	723@146.00			6 bkbwf	628@141.00
4 bkbwf	745@135.00			7 red	735@129.50
6 blk	805@134.25			3 bkbwf	713@125.00
4 blk	869@134.00			7 blk	858@120.25
4 blk	865@132.25			12 blk	958@121.00
7 blk	826@132.00			5 red	959@115.00
145 mix	829@131.60				
228 mix	888@127.50				
57 blk	961@129.35				
4 blk	944@126.75				
55 bkbwf	952@126.75				
50 mix	951@118.50				
16 bkbwf	1058@115.50				

PAIRS

3 blk 1562@1200.00

STEERS

4 mix 336@183.00

EARLY CONSIGNMENTS FOR APRIL 25

• 50 blk & red strs, long time weaned & thin, 400-700 lbs

• 75 blk red & Char strs, 875-950 lbs

THANK YOU FOR ALL OF YOUR CONTINUED SUPPORT! YOUR BUSINESS ALWAYS APPRECIATED!

For Cattle Appraisals Call:

BRODY PEAK, 620-343-5107

GLENN UNRUH, 620-341-0607

LYLE WILLIAMS, Field Representative, 785-229-5457

WIBW 580 - 6:45 A.M. Thurs; KVOE 1400 - 6:30-6:45 A.M. Thurs. & Fri.

To see more consignments go to: emporialivestock.com

U.S. red meat exports continued to outpace year-ago levels in February

February exports of U.S. pork, beef and lamb were higher than a year ago in both volume and value, according to statistics released by USDA and compiled by the U.S. Meat Export Federation (USMEF).

Pork exports totaled 205,466 metric tons (mt) in February, up 4 percent from last year's large total, while export value increased 12 percent to \$547.2 million. Through February, pork exports were 2 percent ahead of last year's pace at 408,934 mt, while export value climbed 10 percent to \$1.09 billion.

February exports accounted for 27.8 percent of total pork production and 24 percent for muscle cuts only – up from 27.6 percent and 22.9 percent, respectively, a year ago. Through February, the percentage of total pork production exported was slightly lower year-over-year at 26.1 percent, while the percentage of muscle cuts exported edged higher to 22.7 percent. February export value averaged \$56.78 per head slaughtered, up 9 percent from a year ago. Through February, per-head export value was \$53.70, up 5 percent.

February beef export volume improved 11 percent from a year ago to 100,593 mt, while export value increased 18 percent to \$599.8 million. Although this was the lowest monthly value total since May 2017, it is the highest on record for the month of February. January-February volume was 206,079 mt, up 10 percent from the first two months of 2017, while export value was 20 percent above last year's pace at \$1.22 billion.

Exports accounted for 13.6 percent of total beef production in February, up one full percentage point from a year ago. For muscle cuts only, the percentage exported was 10.8 percent (up from 10.1 percent last year). Through February, beef exports accounted for 13 percent of total production (up from 12.4 percent) and 10.4 percent for muscle cuts (up from 9.8 percent). February beef export value averaged \$322.29 per head of fed slaughter, up 16 percent from a year ago. Through February, per-head export value averaged \$306.69, up 15 percent.

“Red meat exports are off to a strong start in 2018 and continue to deliver excellent returns for U.S. producers,” noted USMEF president and CEO Dan Halstrom. “The outstanding level of export value per head slaughtered is especially encouraging at a time in which U.S. meat production is high and the trade climate is somewhat

volatile. Through all the uncertainty, international customers remain very committed to U.S. pork and beef. This reinforces the importance of having experienced USMEF staff members located in key markets, working every day to maintain customer loyalty and reinforce the United States' reputation as a reliable supplier.”

Pork exports steady to Mexico; solid growth in Korea, Japan and Latin America

February pork exports to leading volume market Mexico were steady with last year at 64,523 mt, while export value was slightly higher at \$117.5 million. Through February, export volume was steady with last year's record pace at 137,520 mt, while export value increased 3 percent to \$251 million.

In Japan, the leading value destination for U.S. pork, February volume was steady year-over-year at 32,418 mt, while value was up 3 percent to \$134.7 million. Through February, export volume to Japan increased 6 percent from a year ago to 67,466 mt and value climbed 10 percent to \$281.1 million. This included a 7 percent increase in chilled pork exports to 36,929 mt, valued at \$176.9 million (up 11 percent).

Pork exports to South Korea climbed 33 percent in volume (40,710 mt) and 43 percent in value (\$119 million). Most U.S. pork products now enter the Korean market duty free under the Korea-U.S. Free Trade Agreement (KORUS), and high-quality, affordable U.S. pork is helping to underpin Korea's record-breaking pork consumption. USMEF continues to help position U.S. pork in new and exciting ways in Korea, including the addition of pulled pork to many restaurant menus, a selection of high-end sausages at convenience stores and a wide array of home meal replacement and snack items sold at retail and through e-commerce.

Through the first two months of 2018, other highlights for U.S. pork include:

Led by strong growth in Colombia and Peru, pork exports to South America were 9 percent ahead of last year's pace in volume (17,855 mt) and 14 percent higher in value (\$43.1 million), with consumption growth in the region continuing to outpace domestic production.

Solid growth in Honduras, a doubling of exports to El Salvador and a steady performance in Guatemala pushed pork export volume to Central America 16 percent above last year's pace at 12,255

mt, while value climbed 20 percent to \$28.9 million. Exports also increased year-over-year to Nicaragua, Panama and Belize.

Exports to the Philippines, the mainstay destination for U.S. pork in the ASEAN and the region's largest import market, increased 3 percent in volume (4,746 mt) and remained steady with last year's pace in value (\$10.8 million). Exceptional growth in Vietnam (901 mt valued at \$3.7 million, up 272 percent and 469 percent, respectively) pushed exports to the ASEAN region 18 percent higher in volume (6,178 mt) and 29 percent higher in value (\$16.9 million). Exports also increased year-over-year to Singapore, Indonesia and Malaysia.

In China/Hong Kong, pork export volume fell 14 percent year-over-year to 69,515 mt, but value increased 3 percent to \$164 million. Muscle cut exports increased 7 percent to 28,775 mt, while variety meat exports declined 24 percent in volume (40,740 mt) but with sharply higher prices value only dipped 2 percent to \$107.4 million. The Chinese government recently imposed a 25 percent tariff on imports of U.S. pork and pork variety meat, in addition to the 12 percent tariff already in effect in China. The higher tariff rate is not reflected in the January-February results, as it took effect April 2. But the additional tariff will put U.S. pork at a significant disadvantage compared to China's other major suppliers: the European Union, Canada, Brazil and Chile. China's total import demand has also slowed with its rebound in domestic production and a significant decrease in domestic hog prices.

Chilled beef shipments to Japan, Korea and Taiwan drive export growth; Mexico and Hong Kong also trend higher

Beef export volume to

leading market Japan declined in February (20,314 mt, -15 percent year-over-year), as the frozen beef safeguard tariff (50 percent, up temporarily from 38.5 percent) contributed to a slowdown in frozen shipments. However, February export value to Japan was down only slightly at \$133.4 million. Through February, total exports to Japan were 4 percent below last year's volume pace at 44,282 mt, but still increased 9 percent in value to \$282 million. This included an 18 percent increase in chilled beef exports to 22,809 mt, valued at \$175 million (up 29 percent). Japan's safeguard tariff on imports of frozen beef from the United States (and from other suppliers that do not have a free trade agreement with Japan) expired March 31, so the tariff rate for both frozen and chilled imports from the U.S. is now 38.5 percent. Japan's tariffs on imports of Australian chilled and frozen beef edged slightly lower on April 1 and now stand at 29.3 percent and 26.9 percent, respectively, under the Japan-Australia Economic Partnership Agreement.

Beef exports to South Korea maintained a torrid pace in February, increasing 24 percent from a year ago in volume (16,193 mt) and 31 percent in value (\$112.4 million). Through February, exports to Korea climbed 18 percent in volume to 33,326 mt and were 32 percent above last year's record value pace at \$234.8 million. This included chilled beef exports of 7,231 mt (up 34 percent year-over-year) valued at \$68 million (up 44 percent). U.S. beef is driving new consumption trends in Korea, where retailers and foodservice operators have intensified their focus on steak cuts and are highlighting features such as dry and wet aging. USMEF contin-

ues to educate the Korean meat trade and consumers about the quality and convenience of U.S. steaks in this increasingly protein-centric market.

Through the first two months of 2018, other highlights for U.S. beef include:

Exports to Mexico, which is a critical destination for beef rounds, shoulder clods and variety meat, were 10 percent above last year's pace in volume (39,987 mt) and 19 percent higher in value (\$175 million). This included an 11 percent increase in variety meat export volume (18,720 mt) and an impressive 36 percent jump in variety meat value (\$44.4 million).

Partly driven by demand for the Chinese New Year holiday, exports to Hong Kong jumped 41 percent in volume (22,807 mt) from a year ago and 61 percent in value (\$168.6 million). Exports to China, which resumed in June 2017, totaled 1,187 mt valued at \$11.1 million.

In Taiwan, an outstanding destination for chilled U.S. beef, exports increased 25 percent from a year ago in volume (8,106 mt) and 42 percent in value (\$78.2 million). Chilled exports to Taiwan were up 53 percent in volume (3,800 mt) and 61 percent in value (\$48 million) as the U.S. holds 72 percent of Taiwan's chilled beef market.

Exceptional growth in Chile and Colombia pushed exports to South America up 68 percent

year-over-year in volume (5,296 mt) and 62 percent in value (\$25.2 million). Exports to Brazil, which resumed in April of last year, totaled 215 mt valued at \$2 million.

Strong performances in Indonesia and Vietnam pushed beef exports to the ASEAN region 42 percent ahead of last year's pace in volume (6,794 mt) and 34 percent higher in value (\$36.7 million). The region is especially strong for beef variety meat, with exports up 74 percent in volume (2,008 mt) and 93 percent in value (\$4.4 million).

Strong growth in Angola and steady volumes to South Africa pushed beef exports to Africa up 26 percent year-over-year in volume (1,981 mt) and 77 percent higher in value (\$3.1 million).

Lamb exports sharply higher year-over-year

Bolstered by a strong rebound in lamb variety meat demand in Mexico, U.S. lamb exports are trending significantly higher in 2018. In February, lamb export volume climbed 85 percent from a year ago to 899 mt – the highest since May 2017. Export value was \$1.85 million, up 42 percent and the highest since March 2017. Through February, lamb exports were 55 percent higher year-over-year in volume (1,639 mt) and up 24 percent in value (\$3.33 million), led by growth in Mexico, the Philippines, the Bahamas and the Turks and Caicos Islands.

VALENTINE LIVESTOCK AUCTION CO. Valentine, Neb.

THURSDAY, APRIL 26, 2018

Special Feeder & Replacement Heifer Sale

S.T. 12:30 p.m. Expecting 2500 head

Breedable Heifers: *Very good quality!!*

400 Angus NI B.V. not topped, Wanneborg sired- hi maternal .600-850#...Selle Rn 90 .bwf (F-1)(50 hd) & blk (40 hd) B.V. NI Evens, Kirsch .750-850#.. Duane Lunne 140 blk & Angus B.V. not topped NI700-800#... John, Lynn & Miles Mundorf 50 .Angus B.V. NI not topped, gentle800#..... Gailbraith Ranch 126 Angus (64s-62h) NI B.V. Risse sired - hfrs not topped- cake & hay575-700#..... Michael Keegan

Feeder Steers & Heifers:

170 blk hfrs NI, G.O. May born.....550-650#..... L Cross Rn (Higgins) 100 blk hfrs NI grass replacements500-600#..... Harms Cattle Co 100 blk, bwf (12 rd) hfrs NI hayfed only500-575#..... Sell Bros 70 .blk B.V. hfrs NI hayfed only450-600#..... Frauen Rn 200 blk strs NI thin500-600#..... Harms Cattle Co 130 blk strs NI775-850#..... Witte Ranch 120 blk strs NI in 2018.....950-1000#..... Jim Heath 250 blk (20 rd) (140s-110h) NI drugfree600-800#..... Butch & Linda Divan 235 Char-x (115s-120h)875-1000#..... Forrest Stewart 170 blk & Angus (120s-50h) NI.....600-750#..... Corny Beef 60 .blk & x-bred hfrs800#..... Francis Heath 30 .blk str & hfr NI700#..... Shane Ross 40 .blk NI non-weaned fall calves350-650#..... Roger & Mark Foster 33 .blk, blk-x (1 rd-2 bwf) fall calves450-500#..... SEC Co (Joan Carver)

Plus more from Cumbow, J. Cox, J. Millar

View our special sales online @ cattleusa.com
Office: 1-800-682-4874 or 402-376-3611
 Greg Arendt, Mgr., C: 402-376-4701 Greg Nielsen, Fieldman, C: 402-389-0833
 For complete listing visit our website: www.valentinelivestock.net

EL DORADO

LIVESTOCK AUCTION, INC.

316-320-3212

Fax: 316-320-7159

2595 SE Highway 54, P.O. Box 622, El Dorado, KS 67042

Market Report - Sale Date 4-19-18. Head Count: 472.
 300-400 lb. steers, \$130-\$193; heifers, \$125-\$173; 400-500 lb. steers, \$125-\$186; heifers, \$125-\$168; 500-600 lb. steers, \$125-\$176; heifers, \$120-\$157; 600-700 lb. steers, \$120-\$158; heifers, \$115-\$144; 700-800 lb. steers, \$120-\$144. 800-900 lb. steers, \$120-\$132.50. Trend on Calves: Choice steer & heifer calves, steady. Trend on Feeder Cattle: Not enough feeder steers & heifers for a good market test. Butcher Cows: High dressing cows: \$52.50-\$61; Avg. dressing cows: \$45-\$52.50; Low dressing cows: \$30-\$45. Stock Cows: Bred Cows, \$700-\$1190. Butcher Bulls: No Test. Trend on Cows & Bulls: Butcher Cows, \$3-\$4 lower; Butcher Bulls, No Test.

CONSIGNMENTS FOR THURSDAY, APRIL 26
SPECIAL STOCKER FEEDER SALE

- 125 black steers, off wheat, 850 lbs.
- 120 mixed steers, 900-925 lbs.
- 157 mixed steers & heifers, on feed (steers 850-975 lbs. & heifers 825-900 lbs.)
- 100 mixed steers & heifers, 750-825 lbs.

CONSIGNMENTS FOR THURSDAY, MAY 3 COW SALE

- 17 bwf & rwf pairs, calves born late Dec.-early Jan. out of Jamison Horned Hereford & Cooper Horned Hereford bulls. Running back with Jamison bulls since first of the year. Calves have had one round of shots.
- 25 blk & bwf first-calf heifer pairs, calves 350-450 lbs. & born early fall. Homeraised & running back with Angus bull.
- 157 mixed steers & heifers on feed (steers 850-975 lbs. & heifers 825-900 lbs.)
- 100 mixed steers & heifers, 750-825 lbs.

We welcome your consignments!
 If you have cattle to consign or would like additional information, please call the office at 316-320-3212

Check our website for updated consignments:
www.eldoradolivestock.com

To stay up to date on our latest announcements you can “Like” us on Facebook

<p>Chris Locke (316) 320-1005 (H) (316) 322-0675 (M)</p> <p>Larry Womacks, Fieldman (620) 394-3273 (H) (620) 229-0076 (M)</p>	<p>Steven Hamlin (602) 402-6008 (H) (620) 222-1199 (M)</p> <p>Van Schmidt, Fieldman (620) 367-2331 (H) (620) 345-6879 (M)</p>
---	---

Cattle Sale Every Thursday 11:00 AM

Eureka Livestock Sale

P.O. Box 267 Eureka, KS 67045

620-583-5008 Office 620-583-7475

Sale Every Thursday at 11:30 a.m. Sharp

Like Us On Facebook!

On Thursday, April 19, we had 873 head on an active market.

<p>STEERS</p> <p>8 bkred 349@186.50 6 blk 385@186.00 8 bkChr 434@182.00 12 blk 426@181.00 1 bkChr 437@175.00 9 blk 529@169.50 12 blk 490@167.00 11 bkbwf 592@164.00 13 bkred 585@156.50 8 blk 593@154.00 11 bkbwf 628@151.00 10 blk 700@146.00 6 blk 699@145.00 6 bkbwf 788@134.50 62 mix 775@134.00</p>	<p>15 bkred 901@128.00 8 bkred 1068@116.75</p> <p>HEIFERS</p> <p>3 blk 258@163.00 5 bkChr 377@164.00 9 bkred 336@160.00 7 bkbwf 404@156.00 21 blk 420@155.00 6 blk 473@155.00 6 blk 609@154.00 3 blk 510@151.00 3 bkChr 537@151.00 12 bkbwf 522@149.00 14 bkbwf 600@148.00 16 bkbwfrfb..... 672@143.75</p>	<p>4 blk 679@143.50 7 bkbwfrfb..... 698@141.00 14 bkbwf 503@141.00 9 bkbwf 705@138.00 8 bwfrfb 744@137.00 9 mix 654@133.50 30 bkbwf 809@129.00 5 bwfrfb 781@128.50 17 blk 801@127.75 11 blk 895@126.00 4 bwfrfb 886@126.00</p> <p>BULLS</p> <p>9 bkbwf 521@151.50 4 blk 480@140.00</p>
---	---	--

Butcher Cows: \$40-\$69.50, mostly \$55-\$65.

<p>BUTCHER COWS</p> <p>1 blk 1495@69.50 1 Brang 1180@68.50 1 blk 1135@68.00 1 red 1155@68.00 1 rbf 1115@67.50 1 blk 1145@67.00 1 blk 1210@67.00 1 blk 1365@67.00</p>	<p>1 Brang 1705@67.00</p> <p>BUTCHER BULLS</p> <p>1 blk 1850@93.00 1 Roan 1690@88.00 1 blk 1925@87.00 1 bwf 1470@86.00 1 blk 1710@83.50 1 blk 1555@83.00</p>
--	--

EARLY CONSIGNMENTS FOR APRIL 26

- 55 blk bwf strs & hfrs, 550-750 lbs, home raised, long time weaned & vac.
- 45 blk bwf strs & hfrs, 450-600 lbs, home raised, long time weaned & vac.
- 32 blk red Char strs & hfrs, 400-550 lbs, home raised, long time weaned & vac.

We appreciate your business!

Ron Ervin - Owner-Manager
 Home Phone - 620-583-5385
 Mobile Cell 620-750-0123

Austin Evenson- Fieldman
 Mobile Cell 620-750-0222

If you have any cattle to be looked at call Ron or Austin

Holton Livestock Exchange, Inc.

1/2 mile East of Holton, KS on 16 Highway

Livestock Auction every Tuesday at 12 NOON

Serving the Midwest Livestock Industry for 65 Years!

******STARTING TIME: 12:00 NOON******

MARKET REPORT FOR TUESDAY, APRIL 17, 2018
 RECEIPTS: 2133 CATTLE
VIEW FULL RESULTS ON OUR WEBSITE.

<p>STEERS</p> <p>5 blk bwf strs 394@199.00 4 blk bwf strs 453@190.00 6 blk bwf strs 444@186.00 11 blk strs 529@185.00 8 blk strs 395@184.00 13 blk strs 433@182.00 12 blk bwf strs 497@180.00 20 blk strs 562@176.00 25 blk red strs 512@176.00 12 blk strs 537@175.50 13 blk red strs 561@174.00 15 bwf rwf strs 478@174.00 10 blk strs 378@173.00 31 blk bwf strs 582@172.00 13 blk strs 570@169.00 19 blk bwf strs 550@169.00 15 herf strs 504@168.00 5 blk bwf strs 608@167.00 14 blk gry strs 617@165.50 22 blk bwf strs 582@165.50 18 blk red strs 629@163.50 12 blk bwf strs 606@161.00 10 blk strs 646@160.00 8 blk bwf strs 617@157.00 10 blk bwf strs 602@155.00 7 blk bwf strs 657@154.00 21 blk strs 688@151.50 9 blk red strs 653@150.00 12 blk strs 705@148.50 13 blk red strs 663@148.00 6 blk strs 723@145.00 11 blk bwf strs 820@136.50 5 blk strs 790@136.00 16 blk bwf strs 944@125.00 20 blk bwf strs 948@122.25</p>	<p>HEIFERS</p> <p>3 blk hfrs 433@175.00 7 blk bwf hfrs 448@174.00 14 blk bwf hfrs 431@172.50 13 rwf bwf hfrs 423@169.00 10 blk red hfrs 316@167.00 10 blk bwf hfrs 491@166.00 4 blk hfrs 575@165.50 16 blk hfrs 492@165.00 5 blk red hfrs 342@161.00 9 blk bwf hfrs 396@160.00 10 blk bwf hfrs 424@159.00 12 mix hfrs 523@155.00 15 blk bwf hfrs 475@152.50 13 mix hfrs 509@152.00 28 bwf rwf hfrs 530@151.00 12 mix hfrs 566@146.00 11 blk bwf hfrs 561@143.50 8 blk bwf hfrs 605@142.00 10 blk hfrs 589@141.00 15 blk bwf hfrs 569@140.00 18 blk hfrs 589@139.50 5 blk bwf hfrs 593@137.50 26 mix hfrs 622@137.00 12 blk hfrs 698@134.50 4 blk red hfrs 660@132.00 9 blk hfrs 719@132.00 5 blk gry hfrs 676@127.00 10 blk hfrs 802@126.50 7 blk char hfrs 661@125.00 4 blk hfrs 812@124.50 4 blk hfrs 827@124.50 8 blk hfrs 913@121.50 4 blk bwf hfrs 1110@113.50</p>
---	--

Dan Harris, Auctioneer & Owner • 785-364-7137
Danny Deters, Corning, Auct. & Field Rep. • 785-868-2591
Dick Coppinger, Winchester, Field Rep. • 913-774-2415
Steve Aeschliman, Sabetha, Field Rep. • 785-284-2417
Larry Matzke, Wheaton, Field Rep. • 785-268-0225
Craig Wischropp, Horton, Field Rep. • 785-547-5419
Barn Phone • 785-364-4114
WEBSITE: www.holtonlivestock.com
EMAIL: dan@holtonlivestock.com

View our auctions live at “lmauctions.com”

Youth Entrepreneurship Challenge gives kids jump start on business ideas; Leonardville girl tops regional contest for second straight year

She's not yet in college, but Bridget Stanton has a pretty good gig already in place for when she gets there.

Stanton, an 18-year-old former 4-H'er whose family farms near Leonardville, has established a promising business which recently earned her a second consecutive win in a regional competition of the Youth Entrepreneurship Challenge.

The contest, which aims to support youths who have a concept that could

lead to a future business, is in just its second year in Manhattan. This year's winners advance to the state competition, which will take place April 24 at Kansas State University.

Stanton formed a business, Bridge Digital Marketing, about 13 months ago to use social media and graphic design services in creating cost-effective marketing strategies for small businesses.

She earned \$1,500 for winning the regional contest each of the past two

years, money provided by Network Kansas, which sponsors regional and state competitions. Network Kansas established the program in 2013.

"I've learned so much through the Youth Entrepreneurship Challenge," Stanton said. "Last year, I was just getting my business started, and it was a great way to put a business plan into writing and get to know some other entrepreneurs. I learned a lot."

She used the money she won last year to buy a

laptop with graphic design software. In her first year, she took on 11 clients and had \$7,100 in gross earnings, she said.

"I love doing graphic design and social media marketing and I plan to do it through college," said Stanton, who is planning to attend Providence Baptist College in Elgin, Illinois, next fall. "Certainly on a campus with many people who are well versed with social media, I could even expand and add some employees."

Fifteen-year-old Brook Staten, a member of the Leonardville Hustlers 4-H Club, also participated in the regional competition in Manhattan, and said the experience is going to benefit her as she forms her career goals.

"The Youth Entrepreneurship Challenge has really helped me get kick-started in something that I'm passionate about, especially advocating for BLM (Bureau of Land Management) mustangs and conserving our American land," she said. "This has provided me an opportunity to get my name out and get the idea out of the crisis and need for adoption of BLM mustangs."

Staten's idea is to establish a business offering trail rides in the Kansas Flint Hills. Her idea is to help save the American mustang through a business that will adopt and train the animals and spread education about the need to care for the wild horses.

"I really hope to create this into a working business, because the crisis of the over-population of mustangs is something that I'm very passionate about, and I'm very passionate about conserving our American lands," she said. "Being able to promote the Flint Hills and the BLM American mustang really means something to me."

There were 31 regional competitions across Kansas in this year's Youth Entrepreneurship Challenge, and each of the winners will participate in the Kansas Entrepreneurship Challenge on April 24. In addition, there will be as many as 15 wild-card spots available for the state competition through a review process of interested applicants.

Kansas State Univer-

sity, Network Kansas and the Kansas Masonic Foundation are partners in providing awards for the Kansas Entrepreneurship Challenge, which will offer \$5,000 for first place, \$4,000 for second, and \$3,000 for third. The money is intended to boost the youth's business idea.

"I think it's important for everyone if you have a dream, you can work for it and you can make it come true," Stanton said. "If you can dream it, you can do it. Hard work, that's the key, just keep working at it and do something you're passionate about."

The competition in Manhattan was also sponsored by the Manhattan Area Chamber of Commerce and the K-State Research and Extension office in Riley County.



BENEFIT AUCTION

SUNDAY, MAY 6, 2018 — 1:00 PM
AUCTION LOCATION: 600 LINCOLN, WAMEGO, KANSAS





CARS, TRUCKS, MOTORCYCLE

- 2004 Lexus LS430 – 190077 miles
- 1990 GMC 2500 Sierra Club Cab—74,033 miles
- 2004 Goldwing Trike Motorcycle ~ 10,000 miles
- 1993 Pontiac Bonneville – 135,000 miles

UTVS, BOATS & ACCESSORIES

- 2012 Oreion Reeper SUV w/301 miles & Chery 3 Cyl motor (From Brown Chevy)
- 1995 19' Caravelle fish boat 4.3L Mercury V6-low hours
- 2000 16' Alumacraft boat & trailer w/2016 9 HP Mercury pro kicker outboard motor (like new), Minnkota Terrova-Trolling motor, Hummingbird 1199 CiHD Depth Finder
- 2009 Yamaha Rhino- 17k miles

OTHER ITEMS

- Green Mountain Grill -Daniel Boone Model (NEW) from CTI
- Traeger Tailgater Grill (NEW),
- JD-LA115 W lawnmower, 42" deck
- Air Hockey table
- Furniture, home & shop-Antique rocker, Black credenza, office chair, shelving unit, file cabinets (2), tables, couch/loveseat combo (nice), antique wood table, exercise bike, deep fat fryer (new?), refrigerator, exercise equipment, welding helmet
- AND MUCH MORE!**






Questions? Contact: Andrew Sylvester, Auctioneer, 785-456-4352 or church office, 785-456-7495

Auction Service Donated By:



Watch Next Week's Grass & Grain for a more detailed list of inventory & other items being sold! Check us out on Facebook & Online for more info
www.kscrossroads.com • www.facebook.com/KSCrossroadsauctions

"The funds generated by this auction will go towards benefitting the youth program conducted by the United Methodist church. Come bid on some great items and support a great cause!"



New, Remanufactured and Recycled Ag Replacement Parts



Remanufactured Transmission Assemblies for John Deere® 6000, 7000 & 8000 Series

We strive to provide the highest-quality product available. Our first step was to build a new facility specifically designed for the remanufacture and testing of these assemblies.



Test stand simulating required load

The second step includes ongoing and stringent quality-control measures by qualified technicians. All transmissions are built to OEM specifications and are tested under load in every forward and reverse gear – in both high and low ranges. Pressures are also read and recorded in those same gears at specified temperatures.



Pressure testing in all forward & reverse gears under load

Only after passing these performance and reliability tests will the transmission assemblies receive Abilene Machine's "stamp of approval." After careful inspection, the ready-to-use assembly is delivered to you in a specially built steel freight carrier to ensure your assembly is received damage-free.

Toll Free: 800-255-0337 • www.AbileneMachine.com • See Us on Facebook

AgToons

by Michele Johnson

3 BEDROOM HOUSE TO BE SOLD AT AUCTION

SATURDAY, MAY 26 — 10:00 AM
AUCTION LOCATION:
 Abilene High School, 1300 N. Cedar, ABILENE, KS

This 1456 sq. ft. home was the major construction project of the Abilene High School Carpentry Class. House located south of vocational building on the Abilene High School Campus.

Watch next week's Grass & Grain for more details!

INSPECTION: Any day between now and sale day by appointment only. School: 785-263-1260

USD 435, SELLER

REYNOLDS AUCTION SERVICE

ABILENE & CLAY CENTER

RANDY REYNOLDS: 785.263.5627
landmanrj@gmail.com
 Independent Cashier: Diane Lykins

Sell At St. Marys

Sell Or Buy Cattle By Auction STARTING TIME 10:30 AM Tuesdays

We sold 1701 cattle April 17. There was good demand for steer and heifer calves at steady to higher prices. Feeder steers and heifers sold \$2.00-8.00 higher. Cows and bulls were steady to \$3.00 higher.

STEER & BULL CALVES		STOCKER & FEEDER STEERS	
5 blk str	368 @ 199.00	5 blk/char str	550 @ 177.50
14 blk str	453 @ 199.00	77 red str	674 @ 173.75
3 blk str	352 @ 194.00	4 blk str	563 @ 172.00
5 blk str	384 @ 191.00	34 blk str	609 @ 172.00
6 blk str	468 @ 191.00	9 blk str	587 @ 170.00
5 blk str	470 @ 190.00	13 blk/char str	562 @ 169.00
13 blk str	462 @ 189.50	40 blk str	610 @ 166.25
2 blk bulls	383 @ 187.00	16 blk/bwf str	604 @ 164.00
8 blk bulls	383 @ 186.00	4 blk/bwf str	680 @ 164.00
7 blk str	489 @ 186.00	5 blk str	606 @ 162.25
4 blk str	439 @ 185.00	26 blk str	591 @ 161.75
42 blk str	497 @ 179.00	9 blk str	599 @ 161.50
2 blk/red bulls	440 @ 178.00	5 blk/bwf str	595 @ 160.00
16 blk/red str	434 @ 177.00	4 blk str	690 @ 158.00
12 mix str	442 @ 176.00	4 blk str	723 @ 155.00
3 blk str	533 @ 176.00	8 red/char str	770 @ 150.00
13 blk/bwf str	538 @ 176.00	4 blk/bwf str	715 @ 146.00
4 blk bulls	463 @ 176.00	4 blk/red str	608 @ 143.00
11 blk str	545 @ 174.50	16 blk/bwf str	753 @ 139.75
4 blk str	543 @ 174.00	64 mix str	812 @ 136.25
20 blk str	523 @ 173.50	8 blk str	814 @ 136.00
19 blk/red str	542 @ 172.50	59 blk/char str	885 @ 134.10
3 wf str	410 @ 171.00	22 mix str	872 @ 132.75
3 blk str	505 @ 171.00	60 blk/bwf str	940 @ 130.00
22 blk/bwf str	533 @ 171.00	7 wf str	892 @ 126.75
5 blk bulls	507 @ 170.00	60 blk/red str	944 @ 126.50
6 blk/red bulls	501 @ 167.50	22 blk/bwf str	927 @ 125.75
10 blk str	520 @ 167.00	61 mix str	960 @ 124.20
8 blk str	521 @ 167.00	26 blk str	959 @ 123.75

HEIFER CALVES		COWS & HEIFERETTES	
10 blk hfr	424 @ 187.00	11 blk hfr	742 @ 124.00
3 blk hfr	338 @ 175.00	7 blk hfr	773 @ 123.75
3 blk hfr	438 @ 174.00	65 mix hfr	843 @ 121.00
3 blk hfr	398 @ 173.50	12 blk/char hfr	883 @ 116.25
7 blk hfr	366 @ 173.00	56 mix hfr	890 @ 116.25
3 x-bred hfr	368 @ 172.00		
4 blk hfr	395 @ 172.00		
8 blk hfr	439 @ 171.50		
6 blk hfr	353 @ 171.00		
4 blk hfr	443 @ 169.00		
4 blk hfr	463 @ 169.00		
4 blk hfr	441 @ 168.00		
5 blk hfr	378 @ 167.00		
15 blk hfr	506 @ 166.00		
4 blk hfr	425 @ 164.00		
3 blk hfr	507 @ 157.00		
31 blk/bwf hfr	485 @ 155.50		
4 blk hfr	479 @ 154.00		
4 blk/red hfr	463 @ 153.00		
4 blk hfr	503 @ 150.00		

STOCKER & FEEDER HEIFERS		BRED COWS & HEIFERS	
5 blk hfr	550 @ 154.00	1 blk cow	1110 @ 103.00
8 blk hfr	566 @ 149.00	3 blk/red cows	1128 @ 73.00
26 blk/bwf hfr	579 @ 147.25	2 blk cows	1253 @ 72.00
14 blk hfr	570 @ 147.00	1 blk cow	1365 @ 70.00
8 blk/bwf hfr	568 @ 143.50	2 blk cows	1360 @ 69.50
12 blk/bwf hfr	735 @ 134.00	1 blk cow	1160 @ 69.00
4 bwf hfr	691 @ 131.00	1 bwf cow	1260 @ 68.00
7 blk/bwf hfr	699 @ 130.00	1 blk cow	1320 @ 67.50
6 blk hfr	678 @ 125.00	1 blk cow	1450 @ 67.00

COW & HEIFERETTES		BULLS	
1 blk cow	1200 @ 66.50	1 blk bull	1815 @ 88.00
6 blk cows	1062 @ 66.00	1 blk bull	1470 @ 87.50
1 blk cow	1390 @ 65.50	1 blk bull	1950 @ 86.50
5 blk/bwf cows	1258 @ 65.00	1 blk bull	2005 @ 85.00
1 bwf cow	1665 @ 65.00	1 blk bull	1950 @ 84.50
1 blk cow	1360 @ 64.50	1 blk bull	1735 @ 83.00
1 blk cow	1500 @ 64.00	1 blk bull	1350 @ 82.50
1 bwf cow	1230 @ 63.00	1 blk bull	1905 @ 82.00
4 blk/bwf cows	1329 @ 62.50		
3 bwf cows	1283 @ 62.00		
1 red cow	1220 @ 61.50		
2 blk cows	1343 @ 60.50		
4 blk/sim cows	1199 @ 60.00		
2 blk cows	1223 @ 59.50		
1 blk cow	1325 @ 59.00		
1 blk cow	1420 @ 58.50		

CONSIGNMENTS FOR APRIL 24:

- 10 Angus cows, 4-8 yrs old with March calves sired by Downey Ranch bull
- 20 Angus steers & heifers, 450-500 lbs., vacc.
- 30 blk steers & heifers, 500-600 lbs., vacc.
- 40 blk str & hfrs, 500-600 lbs., weaned, vacc.
- 65 black Charolais heifers, 750-775 lbs.
- 60 black steers, 875-900 lbs.

CONSIGNMENTS FOR MAY 1:

- 100 blk steers, 750-800 lbs., Northern origin

WATCH OUR AUCTIONS LIVE ON DVAuctions.com

Our CONSIGNMENTS can now be viewed after 12 Noon on Mondays by going to WWW.grassandgrain.com & logging onto the online subscription

FOR INFORMATION OR ESTIMATES:

REZAC BARN	ST. MARYS, 785-437-2785	LELAND BAILEY	TOPEKA, 785-286-1107
DENNIS REZAC	ST. MARYS, 785-437-6349	LYNN REZAC	ST. MARYS, 785-456-4943
DENNIS' CELL PHONE	785-456-4187	REX ARB	MELVERN, 785-224-6765
KENNETH REZAC	ST. MARYS 785-458-9071		

Toll Free Number.....1-800-531-1676
 Website: www.rezaclivestock.com
 AUCTIONEERS: DENNIS REZAC & REX ARB

Livestock Commission Company, Inc.

St. Marys, Ks.

