

Since 1954

GRASS & GRAIN[®]

Published by AG PRESS

61st Year

No. 31

September 20, 2016

\$1.00



Ag committee chairmen joined by economist at Kansas State Fair Ag Forum

By Donna Sullivan, Editor

It was a unique and historic moment when the two agriculture committee chairmen came together at the Kansas State Fair on Saturday, September 10. Sen. Pat Roberts, chair of the Senate Ag Committee and Rep. Mike Conaway, chair of the House ag committee, began the day at the Kansas Farm Bureau Agricultural Leadership breakfast, which also included remarks by Gov. Sam Brownback. Following the breakfast, the pair was joined by KSU ag economist Allen Featherstone for the annual Ag Forum hosted by WIBW Radio, where the current downturn in the ag economy was the focus of the discussion. The panel fielded questions that had been posed by commodity groups and banking interests. Moderator Kelly Lenz opened by getting their reaction to a recent news story out of Washington in which the Heritage Foundation called on Congress and the next president to transition away from safety nets for farmers and encourage them to manage risk privately.

"This is nothing new with regards to the Heritage Foundation and others who criticize ag," Roberts said. "It's not going to happen. You shouldn't criticize agriculture with your mouth



WIBW's Kelly Lenz, right, looks on as Gov. Sam Brownback introduces the panel for the Ag Forum at the Kansas State Fair. Panelists were, from left: Sen. Pat Roberts and Rep. Mike Conaway, chairmen of the Senate and House ag committees, and Kansas State University ag economist Allen Featherstone.

Photo by Donna Sullivan

full."

"If you can get the Heritage Action PAC to make those same suggestions to the Chinese and the Indians and others around the world who are dramatically subsidizing their farmers and creating an unlevel playing field that we're trying to protect our farmers from, then you might have a conversation," Conaway said. "But I can't imagine the Action PAC is going to be listened to in China or India." Conaway went on to defend the current

system as one that works. "The problem we have from a policy standpoint is, the folks who eat every day don't realize how good of a deal they're getting." Americans spend an average of 9.8% of their disposable income on food, which is the lowest in the world. "That sounds great on the average," Conaway continued. "But the folks who are proposing this scheme change are in that bracket way above the norm and they don't care what food costs. You add another one or

two thousand dollars a year to their food bill, and the folks at Heritage Action PAC don't care." Conaway said his concern is the bottom 20% of the economic sector, for whom food costs aren't 9.8% of their income, but more in the 30-35% range. "So before we go arbitrarily changing a scheme that delivers, I want to know what it's going to do to the cost of food. How does it impact the mom out there that is using her food budget to flex? Her house payment

doesn't change, her car payment doesn't change. If something unexpected comes up during the week or during the month, it comes out of the food budget. I want her still to be able to go to the grocery store and get the most affordable food as any place in the world."

Featherstone took issue with the group's assertion that current farm programs distort the market. "The research I've seen more recently indicates that they are pretty neutral with regards to

the market distortions," he said.

As for the role of Congress in addressing the current farm crisis, which has drawn comparisons to the 1980s scenario, Roberts believes farmers are in better shape than they were then in terms of liquidity and credit. "Our first obligation is to make sure Congress doesn't harm crop insurance," he said. "We do have tools that we can use and we will use them. The role of Congress is to make sure that we can get past this particular time."

Conaway added that despite calls to reopen the farm bill, they would be very resistant to that.

Featherstone listed credit availability as one of his main concerns. "The key thing there is to make sure farmers do have the ability to borrow. Rates are historically low, which is a substantial difference from where we were in the '80s, but certainly with some of the regulation that has come on with regards to financial institutions, one of the concerns that I have is essentially the ability of financial institutions to work with the farmer borrower and make sure they can work their way through without the regulators looking over their shoulders."

Goats offer natural weed and brush control as well as business opportunity

By Donna Sullivan, Editor

When you know you have something that fulfills a need, sometimes you just have to go for it, even if it seems a little unconventional when it comes time to sit down with the banker. For Mary Powell of Hunter, the hours she spent each evening letting her goats graze after having worked with them all day long led her to come up with an idea for a business she knew would fulfill a need. People have weeds and



Mary Powell is shown with Jinx, one of her three border collies that help with the goat grazing business. Powell says Jinx is her jumper, which the dog was happy to demonstrate.

Photos by Donna Sullivan

brushy areas that need cleaning up. She had goats. Goats eat weeds and brush. From that, a business was born — Barnyard Weed Warriors.

"Weed Control the Natural Way" is Powell's slogan as she loads up approximately 70 goats in her 28-foot stock trailer and heads to the next job. Once on site, she puts up an electric woven wire fence, and lets the goats out to start doing their job. While they begin to graze, she runs a weed eater around the perimeter to make sure the fence doesn't short out. A 1-3 joules solar fencer powers the fence and she has a

250-gallon food grade tank that she uses as a water source. She sets up approximately one-acre sized pens so the goats can graze it intensively and do a better job of cleaning it up than they would a larger area.

Three border collies, ten-year-old Allie and her daughters Jinx and Joy, assist Mary in her endeavor. While she hasn't had a problem with predators, the dogs have handled invaders like snakes and opossums.

She began the business in March and had three jobs for the city of Ellsworth and one



A herd of about 70 goats grazed at Jeffrey Energy Center near St. Marys recently as part of a pilot program for controlling brush and weeds on their 3500 acres that are leased to a cattle producer.



This 28-foot stock trailer serves as home base for Mary and the goats as they travel around to different locations across the state. A tarp attached to the other side serves as a tent for Mary, who has weathered several storms throughout the summer but never left her goats.

Continued on page 3



Communication leads to community

By John Schlageck,
Kansas Farm Bureau

I love to eat. And like millions of fellow Americans there's nothing better than the food grown and produced on this nation's farms and ranches.

I'll eat a thick, choice rib-eye steak hot off the grill any time. And make sure it has all the fixings – baked potatoes, steamed green beans, salad, fresh bread and a glass of red wine.

I also like a home-cooked omelet with my Sunday morning paper. You know the kind – three eggs filled with sautéed mushrooms, diced red peppers and onions, cheddar cheese, wheat toast with a couple strips of bacon on the side

and a tall glass of cold milk. Dessert?

Who doesn't enjoy a great piece of apple pie, with ice cream, all produced by farmers and ranchers across Kansas and this country of ours?

You can't beat good food, prepared right. There's nothing like it.

That's why it's so hard to stomach hearing about the many ways our Kansas and American farmers and ranchers are under siege these days. Still, every year we expect farmers and ranchers to grow more and more food with less land. And every year they do so.

But the attacks and smear tactics come from all sides. Environmental

groups, animal welfare activists, social media hacks – everyone seems to have their own agenda and the national media just can't seem to tell the whole story.

That's the reason we in agriculture must tell our story. Consumers are people and people forget.

They forget our farmers and livestock producers make sure we eat the healthiest, most affordable food on the planet. These producers also take care of their livestock because it's the right thing to do. It is part of a farmer and rancher's values that embody everything they do.

It's also up to us in agriculture to expose the Humane Society of the United States (HSUS) and People for the Ethical Treatment of Animals (PETA) for who and what they are. In case you haven't heard, these two organizations are leading the charge to "step up for animal welfare," while placing a stake through the heart of modern agriculture.

Go to their website and check it out. HSUS and oth-

ers wants to remove meat, milk and eggs from the human diet, yours and mine.

Most American consumers have never lived or worked on a farm. Still, they retain nostalgic visions of their grandparents' or great-grandparents' farms.

You know the story where those farmers and ranchers of old grew their own vegetables, milked a few cows, raised pigs for bacon, ham and pork chops and cared for a couple dozen chickens who laid eggs in an old white wooden chicken coop.

Like a lot of things from the past, nostalgia might appear to be better than it really was. Many of our grandparents were barely able to eke out a living while raising a large family.

The days of yesteryear on the farm took a lot of hard work from sunup to sundown. Many still went hungry or broke and times were lean.

Today's animal husbandry, or care and feeding of livestock, is no accident. Rather, it's because of the

dedicated men, women and children who raise and care for this state's livestock.

For generations, Kansas farmers and ranchers have watched over and nurtured cattle, hogs, sheep, chickens and other livestock from sunup to sunset – every day of the year. The more comfortable these animal producers make their animals, the more productive they're going to be and the better opportunity they'll have to make a profit.

The health and welfare of livestock trumps everything else on the farm, even a producer's own comfort. That's been the recipe for success for more than 150 years in Kansas and with any luck it'll be the same for another 150 years.

Enjoy your food my friends. Eat healthy.

John Schlageck is a leading commentator on agriculture and rural Kansas. Born and raised on a diversified farm in northwestern Kansas, his writing reflects a lifetime of experience, knowledge and passion.

Brownback applauds Flint Hills designation

Gov. Sam Brownback recently applauded the designation of the 3.7 million-acre Flint Hills tallgrass prairie in Kansas and Oklahoma as a Western Hemispheric Shorebird Reserve Network (WHSRN) Landscape of Hemispheric Importance.

The Flint Hills was the second such designation by the WHSRN. The honor recognizes the importance of the Flint Hills as an ecosystem vital to the survival of the more than 134,800 shorebirds that rely on the tallgrass prairie for food, cover, nesting and rearing their young. More than 30 percent of the global population of the highly-imperiled buff-breasted sandpiper uses the corridor. The designation will also benefit other shorebirds and migrants such as the American golden-plover, upland sandpiper and killdeer.

"I especially want to express gratitude on behalf of all Kansans for the leadership and dedication of The Nature Conservancy in pursuing this recognition," said Brownback. "Most of the Flint Hills are under private ownership, and this wouldn't have been possible without the help of the many landowners, individuals, communities and organizations that supported the WHSRN designation."

The Nature Conservancy will take responsibility for working with private landowners to make shorebirds and their habitats a priority in the Flint Hills landscape. Other partners committed to the project include the U.S. Fish and Wildlife Service, USDA Natural Resources Conservation Service, Kansas Department of Wildlife, Parks and Tourism, Kansas Land Trust, Ranchland Trust of Kansas and the Tallgrass Legacy Alliance.



This past week we participated in the Grand Drive Youth Livestock Show at the Kansas State Fair. My kids probably had their most successful Grand Drive ever. It was the type of weekend that makes you think maybe you are making progress and learning a little bit along the way. However, this weekend was not without it's rough spots and tough lessons learned. That included one of the hardest lessons a livestock producer will ever learn.

Let me back this up a bit and give you some background. Students at Rock Creek High School have to complete an exit project to graduate. The project must be a new experience to the student and something that stretches them and they must have a mentor. Madison is a good friend of both of my kids and she came to me last fall asking if I would serve as her mentor as she raised a couple of lambs and exhibited them. It was a pretty easy decision for me to make to be her mentor, Madison is one of those people who has a zest for life, a positive outlook and a passion for animals.

This spring she picked out a wether and ewe from our spring lamb crop. Throughout the summer Madison would check in with me to tell me what she was doing, how the lambs were growing and ask any questions she might have. I was impressed at how hard she worked at the project and the natural ability she showed as an animal caretaker. The lambs grew out very well and looked very good at the county fair. Her wether was selected as champion AOB market lamb. She was excited about the State Fair and how he might do there (her mentor was pretty excited about it too). Labor Day weekend she brought her lambs over and we sheared them and got them ready for the show. The wether looked very good.

Madison, Tatum and I loaded the lambs up on the Thursday before the fair and made the journey to Hutchinson. We unloaded and got the lambs settled and ate supper. The girls insisted that we go back to the barn and check the lambs one last time before we checked into the Encampment Building that night. Everything looked good and the sheep were settled in.

The next morning, we got up bright and early, ate breakfast and fed the sheep. Madison noticed that her wether didn't act

quite right, he was a little droopy but after the travel, that was to be expected. I told the girls to wash the lambs and give them a little exercise. The lambs were washed and walked. That is when it happened. As Madison was putting her lambs back in the pen, her wether collapsed. As luck would have it the vet check was less than fifty yards away and Dr. Smith made it to the lamb in less than a minute. Unfortunately, there was nothing he could do and the lamb died. We don't know what caused his death but it was sudden and there was probably nothing that could have been done to prevent it.

Madison was devastated. She had put several months of care and attention into her lambs and to have her best lamb die just a day before the show was crushing. I was crushed and devastated for her, it was one of the toughest experiences I have went through in the show ring. Madison was upset for the rest of the morning, showmanship was coming up and that lamb had been her showmanship lamb. I told her the decision to participate in showmanship was up to her. We ate lunch and that is when she picked herself up and decided to use her ewe in showmanship. She did fairly well in showmanship that evening but I am not sure I have ever been prouder of a showman.

Many times we hear about what is wrong with youth livestock shows. It is pretty easy to focus on the bad things and miss the very important life lessons the majority of those who participate learn. What I saw this weekend is living proof of the importance of youth livestock shows. Madison learned the hard lesson that if you have livestock bad things can happen, even if you do everything right.

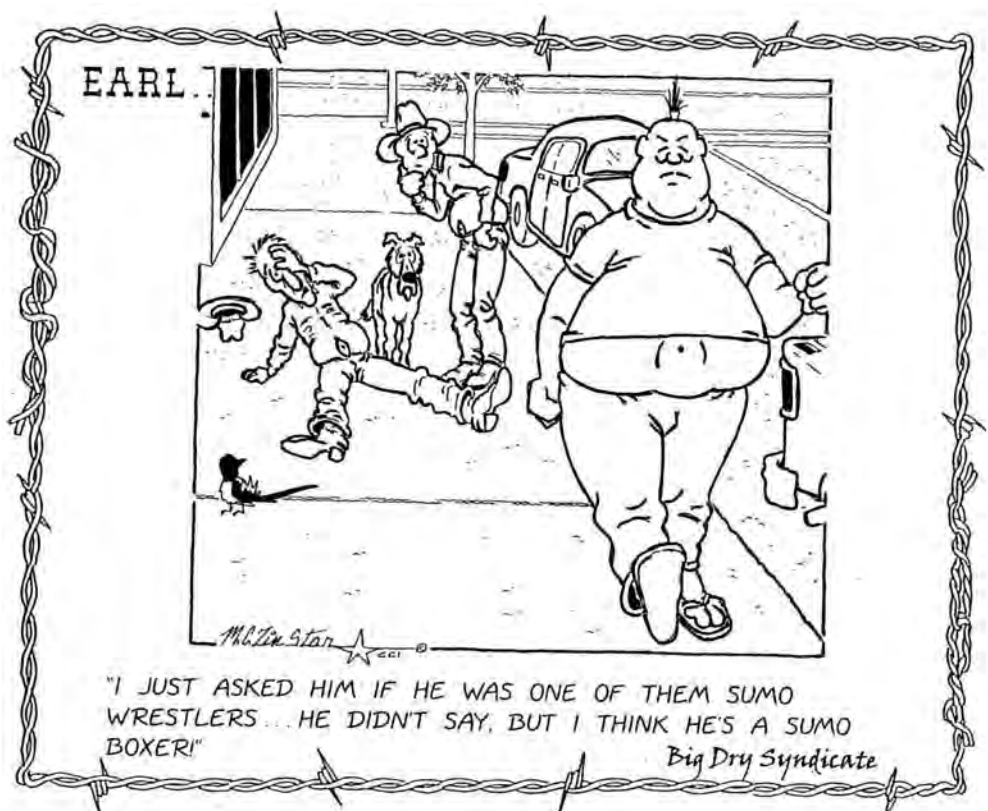
However, more importantly she learned the lesson that when bad things happen, you have two choices. You can either give up, feel sorry for yourself and pout. Or you can pick yourself up, dust yourself off and go back to work. It was probably not what she expected to learn from her exit project, but probably a life lesson that will benefit her many times over later on. Oh, and the rest of the story, as Paul Harvey used to say. Her ewe placed first in its class, proving another lesson. Hard work and perseverance does pay off.

COWPOKES®

By Ace Reid



"Maw, now these people really have a heck of an erosion problem!"



785-539-7558
Fax 785-539-2679

Editor — Donna Sullivan
gandgeditor@agpress.com

— Advertising Staff —
Steve Reichert
agpress2@agpress.com

GRASS & GRAIN (USPS 937-880)

The newsweekly for Kansas and southern Nebraska, published each Tuesday at 1531 Yuma (Box 1009), Manhattan, KS by Ag Press, Inc. Periodicals postage paid at Manhattan, Kansas. Postmaster send address changes to: Ag Press, Box 1009, Manhattan, KS 66505.

Subscription — \$76 for 2 years, \$41 for 1 year, plus applicable sales tax. Outside Kansas, \$51 for 1 year, \$95 for 2 years.

MEMBER OF
Associated Press

www.grassandgrain.com

Guest Editorial

Keeping the Voice of Rural America Alive

By U.S. Senator Jerry Moran (R-Kan.)

On Capitol Hill, I spend a lot of time explaining that in rural Kansas community development can come down to whether or not there's a grocery store in town. It's something few people in Washington think much about, but in so many of our communities across Kansas keeping the local economy alive and well is about having a Main Street with a hardware store, grocer, pharmacy and a weekly newspaper.

Growing up in rural Kansas, newspapers are where I not only learned about the rest of the world, but also who won Friday night at the football game, who was getting married, who received a blue ribbon at the county fair and which new businesses were opening in town. As Kansans, we

care about our neighbors and the local paper is a big part of how we connect to them. Strong local newspapers improve the quality of life for local citizens and help strengthen local communities.

But newspapers are so much more. In the 18th century they were a tool in the fight for independence, and the freedom of the press was established in the First Amendment. Newspapers also played a critical role in keeping Kansas Territory settlers informed of the rapid succession of events leading up to our state's admission to the Union in 1861. And today, newspapers help root out wrongdoing as a community watchdog.

The news about the World Company selling to a West Virginia-based newspaper company and Harris Enterprises selling five

Kansas newspapers – *The Ottawa Herald* (which the Harris family has owned since 1907), *The Hutchinson News*, *Salina Journal*, *The Garden City Telegram* and *The Hays Daily News* – is disappointing because it will result in fewer of our papers being owned by Kansans. The benefit of your hometown paper being owned and operated by a member of a Kansas community is in their innate understanding of the local point of view. They know what news matters to you and your family, and they know the history of our state and people.

The digital age has changed the way we receive and share information. Seeing local news departments downsize, lay off reporters or shut their doors altogether should remind us all how important it is to support our local papers just like all

other local businesses. We may no longer settle in with a print edition and our morning coffee at the kitchen table, or get to know our paperboy, but we can demonstrate our desire to keep community journalism alive by investing in online subscriptions, calling newsrooms with tips about upcoming events, and sharing articles with our neighbors. We can and must help slow the decline of newspaper readership – our communities depend on them just as much as they depend on us.

The reality is that the future of rural America is not a big concern for a majority of decision-makers in Washington, D.C. That's why a strong work ethic and genuine concern for others – values that bind Kansans together – are as important now as ever. Together we build up the strength and spirit of our communities to keep our home such a great place to live, work and raise a family. Supporting local news is just one piece of that puzzle, but it's up to us to make certain our local papers are a part of our shared futures.

Grass & Grain, September 20, 2016

Page 3

County speech contest to focus on pollinators

Rules and instructions for the 2016 county conservation speech contest have been delivered to High School Vocational Agriculture and Speech Instructors. The theme for the contest is "Local Heroes – Your Hard-working Pollinators." The contest is open to all high school (ninth through twelfth grade) students in Pottawatomie County, at-home school students are encouraged to enter. This year marks the 38th year for the competition!

The county contest will be held Thursday, October 6 at 7:00 p.m. at the Pottawatomie County Conservation District Conference Room at 501 State Street in Westmoreland. The county speech contest winner will be presented \$100 for their efforts. Second and third place contestants will receive \$25.

The winner of the county contest will compete in the Kansas Association of Conservation Districts (KACD) Area IV contest with 23 counties represented. The area contest will be held later in October or November at a yet to be determined time and place. This year KACD has also provided funds to offer cash awards as follows: 1st place \$150; 2nd place \$100 and 3rd place \$50.

The area winner then competes at the KACD State Convention on November 21, 2016 in Wichita. Prizes of \$1,000 for first place, \$500 for second place and \$250 for each honorable mention speech will be awarded at the state level.

The county contest winner will also be asked to give their speech at the district's annual meeting in early 2017.

For contest rules contact the Pottawatomie County Conservation District at 501 State Street, Westmoreland or call 785-457-3398.

Goats offer natural weed and brush control as well as business opportunity

Continued from page 1

for the Salina River Woods Nature Area. She then began getting calls from private landowners. But in July, business seemed to dry up. "I went three weeks without work and was ready to call it quits," she admitted. Enter Ashley Jarvis of Re/Max Realty in Salina. He called with about three-quarters of an acre that needed clearing and the next day Mary was there with her goats. Jarvis posted a video online of the goats accomplishing their mission and by the time Mary arrived at home the next day, it had been viewed 11,000 times. At the same time, the Emporia Gazette had run a story on her, and from there, the business took off, and scheduling work has not been a problem for Mary and her Weed Warriors.

Then a new unexpected twist was added. "The big thing now is goat watching parties," Powell laughed. "One lady served goat cheese and a South African wine called Goats Do Roam. Peo-

ple climbed in the pen and interacted with the goats. They bent the trees over so the goats could eat the leaves."

While the entertainment value is good, the environmental impact of the grazing goats is paramount. "These goats can do the job better than chemicals, because some places can't be sprayed because of run-off and some weeds are becoming resistant to spraying," Powell pointed out. "They're just so beneficial for the environment."

J.R. Glenn, land management coordinator for Westar Energy, recently hired Powell to clear an area at their Jeffrey Energy Center site near St. Marys. The company leases about 3500 acres for cattle, and the tenant was beginning to have concerns that the brush was getting bad enough to cost him production. "This is kind of a pilot for me," Glenn said. "I wanted to bring them out here to see what they can do." If please with the results, he would like to ex-

plore the possibility of a multi-species grazing program where the goats are in with the cattle. "We may not know the full effects until this time next year after the cattle have been back in here and after the vegetation responds," he said. At that point they would evaluate if there's a way to do it over a larger acreage and what infrastructure would be needed.

Powell added that it would take about 1000 goats to effectively graze that large of an area. "The multi-species approach is doable," she said. "And it benefits the cattle because it allows for more grass growth."

Running the goat grazing business isn't about turning the goats out and heading back to town for Powell. She stays on-site with them the whole time, camping under a tarp beside her trailer. "I've ridden out some pretty severe storms under that tarp," she said, including a hard rain at the Jeffrey Energy Center site. "During that storm I got a little wet get-

ting the goats where they need to be," she admitted. "Then I put the dogs in the pickup, wrapped the tarp around my sleeping bag and fell right to sleep." Being there with the goats allows her to monitor their health and respond with medication or treat any injury they might have.

Powell says the business has taken off to the point that she is unable to keep up, and is looking for other goat owners to start their own grazing business. She spent six months working out her business plan and getting things going. She would be happy to share her experience with others interested in getting started. She can be reached at 785-531-0331 and also has a Facebook page, at Barnyard Weed Warriors.

"It's been an amazing adventure," Powell said. "I was told once I got going and people found out about me, I would stay busy, and it's true. I'm booked out to the middle of October so far."

He's depending on you...



...You can depend on us
We are a bank you can count on in challenging times like these. We offer a full range of equipment, operating and farm purchase loans.
CLAY COUNTY NATIONAL BANK
624 W. Crawford St., Clay Center, Kansas
(785) 632-6720 • 877-632-6720



kansasAGreport



Your source for Kansas Ag News on television

Sunday Mornings

@ 6:30 am

www.kansasagreport.com



HARVEST MORE OF WHAT YOU GROW.

No matter the crop, acreage or field condition, Case IH Axial-Flow® combines are ready to optimize your yield. From header to spreader, our industry-leading innovations are designed to put more high quality grain in the tank and more profits in your pocket. With Axial-Flow combines, you get the capacity you need with easy adjustment options to match your crop and field conditions, all while minimizing potential grain loss. Be ready to take control of your harvest. Keep your profits off the ground and in your tank. See your local Case IH dealer or visit caseih.com/rotor.

SEE US TODAY.

Bruna Implement

5 Kansas Locations

www.brunaimplement.com

McConnell Machinery
Lawrence, KS
785-843-2676

Rossville Truck & Tractor

Rossville, KS

785-584-6195

Straub International
7 Kansas Locations
www.straubint.com



All rights reserved. Case IH is a trademark registered in the United States and many other countries. owned by or licensed to CNH Industrial NV, its subsidiaries or affiliates. www.caseih.com

GRASS & GRAIN *Our Daily Bread*

***** By G&G Area Cooks *****

Rita Hay, Herington, wins Grass & Grain weekly recipe contest with Colorful Skillet Veggies

Rita Hay, Herington: "I went to a farmer's market a couple days ago and got several fresh vegetables. I was telling a friend that night and asked if she had a good way to fix the okra, especially. She said 'you could make what a friend was telling me about.' I had all the ingredients and we love it the next day."

COLORFUL SKILLET VEGGIES

4 slices bacon
Diced onion
Sliced okra rings
2 ears of corn
Diced fresh tomatoes

Note: I used quantities according to what we like.

Fry the bacon in skillet; remove and cut into smaller pieces (I removed some of the grease). Put the onions in to soften and put the bacon back in the skillet. Add a good amount of okra. Slice the corn off the cob and add it on top of the okra. Put a lid on the skillet for a short time (1 or 2 minutes) then sprinkle the tomatoes on top with the lid on for a minute. I like to salt and pepper the tomato before serving. This served 2 of us.

JoAnne Breault, Wamego: "A delicious way to use up summer's bounty. I sometimes use cherry tomatoes cut in half then marinated. This is great tossed with cooked pasta with addition of fresh basil and cheese cubes."

MARINATED TOMATOES
5 large tomatoes
1/4 cup vegetable oil (olive oil may be used too)
1 1/2 tablespoons lemon juice
1/2 clove garlic
1/2 teaspoon salt
1/2 teaspoon oregano
1/8 teaspoon pepper

Peel and slice tomatoes. Combine remaining ingredients and pour over tomatoes. Chill, stirring once or twice to get well covered in marinade.

Lydia J. Miller, Westphalia:

SIX-WEEK MUFFINS
15-ounce box Raisin Bran
5 cups flour
5 teaspoons baking soda
1 cup salad oil
2 1/2 cups sugar
2 teaspoons salt
4 beaten eggs
1 quart buttermilk

Mix in a large bowl the dry ingredients. Add eggs, oil, buttermilk. Mix. Store in covered container in refrigerator. Use as desired.

To prepare, bake at 400 degrees for 15 to 20 minutes.

Gin Fox, Holton:
FRIED APPLE PIE ROLLS
2 tablespoons butter
5 cups diced peeled Granny

Smith apples (about 4 medium)
4 tablespoons sugar, divided
1 1/4 teaspoons ground cinnamon, divided
Pinch of ground nutmeg
Pinch of salt
1 tablespoon all-purpose flour

2 teaspoons lemon juice
8 egg roll wrappers
4 teaspoons coconut oil
Heat butter in a large skillet over medium-high heat until just starting to brown. Add apples, 3 tablespoons sugar, 3/4 teaspoon cinnamon, nutmeg and salt. Cook, stirring occasionally, until the apples are softened, 6 to 8 minutes. Add flour and cook 1 minute more. Remove from heat and stir in lemon juice. Place an egg roll wrapper on a clean work surface with one corner facing you. Lightly brush the edges with water. Place about 1/3 cup of the apple filling in the center. Fold both sides of the wrapper over the filling, then fold in the bottom corner and roll up as tightly as possible. Repeat with the remaining wrappers and filling. Clean and dry the pan. Combine the remaining 1 tablespoon sugar and 1/2 teaspoon cinnamon in a shallow dish and place near the stove. Heat oil in the pan over medium heat until shimmering. Add the rolls and cook, turning frequently, until golden brown on all sides, 5 to 7 minutes total. Dredge the hot rolls in the cinnamon-sugar.

Make Ahead Tip: Prepare through Step 2, individually wrap and freeze for up to 6

months. Thaw overnight in the refrigerator before finishing with Step 3.

PS. Could drizzle some icing on them if you wanted to!

Doris Shivers, Abilene:
PINEAPPLE GOOEY CAKE
2 cups flour
2 cups sugar
1 teaspoon baking powder
1 teaspoon baking soda
1/8 teaspoon salt
2 eggs
(2) 8-ounce cans crushed pineapple, undrained
1 teaspoon vanilla
1 cup chopped pecans
1 cup flaked coconut
Coconut Icing:
1 cup butter
5-ounce can evaporated milk
1 1/2 cups sugar
1 teaspoon vanilla

Set oven to 350 degrees. Lightly grease and flour a 9-by-13-inch pan. In a bowl combine flour, sugar, baking powder, soda, salt. Add eggs, pineapple and vanilla. Beat until combined. Pour batter into pan and bake for 30 minutes or until toothpick comes clean. Combine and prepare coconut icing. Using end of wooden spoon poke 1/2-inch, intervals. Pour coconut icing over hot cake. Sprinkle with pecans and coconut. Cut into squares. Store in refrigerator.

Lisa Conger, Topeka:
**SLOW-COOKER
PORK MEATBALLS**
1/2 cup bread crumbs
1/2 cup milk
2 pounds lean ground pork
1 egg
1/4 cup diced onion
Your favorite sauce

Mix all together (except for the sauce). Make into meatballs and place in slow-cooker. Add your favorite sauce. Cook for 3 hours on high or until done.

Lucille Wohler, Clay Center: "Easy to make."

APPLE CRISP
4 cups sliced apples
1/2 cup sugar
2/3 cup brown sugar
2/3 cups flour
2/3 cup quick oats
1/2 cup oleo

Put sliced apples in an 8-by-8-inch baking dish. Cover with sugar. Blend brown sugar, flour, oats and oleo. Spread over apples. Bake at 350 degrees for 40 to 45 minutes until apples are tender.

Rose Edwards, Stillwater, Oklahoma:

**SLOW-COOKER
SLOPPY CHICKEN**
2 pounds boneless chicken breasts
(2) 8-ounce blocks cream cheese
(2) 1-ounce packets dry ranch dressing seasoning
In a slow-cooker place chicken, cream cheese and ranch seasoning. Cook on low for 6-8 hours or on high for 4 hours until chicken shreds easily. Once chicken shreds, stir with a large fork or spoon so the chicken shreds and all the ingredients combine. Serve warm on buns.

Lydia J. Miller, Westphalia:

**CHOCOLATE LOVERS
CAKE**
1 package Devils food cake mix
3/4 cup water
4-ounce package chocolate instant pudding
3/4 cup oil
4 eggs
1 cup sour cream
12-ounce package chocolate chips

Mix all ingredients but NOT the chocolate chips, on low speed until moistened. Beat on high speed for 2 minutes. Add chocolate chips; pour into a greased and floured bundt pan. Bake at 350 degrees for 50 to 60 minutes. Cool for 20 minutes in the pan before removing. Dust with powdered sugar before serving.

Email your
recipes to
auctions@
agpress.
com.

SINCE 1999

BASE CAMP

LEASING

OUR HUNTERS WILL PAY TOP \$\$\$
TO HUNT YOUR LAND

Call for a FREE Base Camp Leasing info packet & quote

1-866-309-1507

www.BaseCampLeasing.com

Senior Insurance

- ★ Medicare Supplement
- ★ Long Term Care
- ★ Final Expense

800-373-9559

PHILLIPS INSURANCE

Your Kansas Health Specialist

PRIZE FOR SEPTEMBER 2016

"Our Daily Bread"

Recipe Contest Prize

**Speckled Bakeware
Loaf Pan**

• Speckled red loaf pan
• Durable carbon steel construction
• 11 1/4"W x 6 1/4"D x 2 1/4"H

• Oven and dishwasher safe

The winner each week is selected from the recipes printed.

Send us your favorite recipe. It may be a main dish, leftover, salad, side dish, dessert, or what-have-you.

1. Check your recipe carefully to make certain all ingredients are accurate and instructions are clear.

2. Be sure your name, address and phone number are on the entry. Please include a street address with your recipe entries. A post office box number is not sufficient for prize delivery. Allow 3-4 weeks for delivery.

3. Send it to: Woman's Page Editor, Grass & Grain, Box 1009, Manhattan, KS 66505.

OR e-mail at: auctions@agpress.com

E&D Custom Silage

Conveniently located in central Kansas

- Claas 900 machine with K.P. and inoculant.
- 8 row head and pickup head.
- Support trucks and equipment.
- Dependable crew and equipment.

Jobs of Any Size!

Dustin	T.R.	Cort
620-635-0238	620-786-4646	620-786-5172

HYDRA BED
BY TRIPLE C, INC.

OPTIONS:

- Post Hole Digger
- Tool Boxes
- Hydra Feeder
- 3rd Spool Valve
- LED Work Lights

BEDS IN STOCK

INSTALLATION AVAILABLE

BOOT HILL SALES

CLAY CENTER, KS • 785-388-2245 | 785-632-2632

**Kansas
POWERTRAIN
& EQUIPMENT LLC**

785-861-7034

1534 NW TYLER

TOPEKA, KANSAS

Complete Drivetrain Specialists • Drive Shafts
Rear Ends and Heavy Duty Parts

**BARN BUILDERS
DT CONSTRUCTION**

918-527-0117

Free Estimates! All Workers Insured Est. 1977

One Year Warranty

30x50x10 enclosed.....Galvalume \$8,000
12' slider, 1 walk door.....Colored metal \$9,000
40x60x14 enclosed
2 12' sliding doors.....Galvalume \$14,600
1 walk door.....Colored metal \$16,000
40x100x16 enclosed
20' split sliding door.....Galvalume \$22,800
1 walk door.....Colored metal \$24,800

Price includes labor and material.

www.DTCBarns.com

**38th Annual
Chisholm Trail
Day Festival**

Saturday, October 1, 2016
10 AM-4 PM

Dickinson County Heritage Center
412 S. Campbell, Abilene, KS

- Quilter's Demonstrations • Children's Activities
- Pedal Power Tractor Pull • Western Music
- Antique Farm Show Featuring Oliver Tractors
- Living History Performances & Demonstrations
- Antique Car Show • C.W. Parker Carousel Rides
- Steam Engine Train Rides • Old Abilene Town

**Dickinson County
Historical Society**

785-263-2681
heritagecenterdk.com

September is National Food Safety Month

By Cindy Williams
Meadowlark Extension
District Agent
Food & Nutrition, FNP

Did you know that September is National Food Safety month? Really every month should be food safety month and always using good food safety practices. Here are a few of the top 10 food safety myths.

Myth #1: Cross contamination doesn't happen in the refrigerator. **FACT:** Some bacteria can survive and grow in cool, moist environments. Clean your refrigerator with hot water and soap.

Myth #2: I don't need to clean the refrigerator produce bin because I only put fruits and vegetables in there. **FACT:** Naturally occurring bacteria in fresh fruits and vegetables can cause cross contamination in your refrigerator.

Myth #3: I don't need to rinse this melon as the part that I eat is on the inside. **FACT:** A knife or peeler

passing through the rind can carry pathogens from the outside into the flesh of the melon. Play it safe and rinse your melon with cool water and a scrub brush.

Myth #4: I eat a vegetarian diet, so I don't have to worry about food poisoning. **FACT:** Fruits and vegetables may carry a risk of food-borne illness. Always rinse produce under running tap water.

Myth #5: Leftovers are safe to eat until they smell bad. **FACT:** Smell is not an indication of whether food is safe to eat! Freeze or toss refrigerated leftovers within 3-4 days.

Myth #6: Freezing food kills harmful bacteria that can cause food poisoning. **FACT:** Bacteria can survive freezing temperatures. Cooking food to the proper internal temperatures is the best way to kill harmful bacteria.

Myth #7: Putting chicken in a colander and rinsing it with water will remove bac-

teria like Salmonella. **FACT:** Bacteria in raw meat and poultry can only be killed when cooked to a safe minimum internal temperature, which for poultry is 165 degrees F.

Myth #8: Only kids eat raw cookie dough and cake batter. **FACT:** Just a lick can make you sick! No one of any ages should eat raw dough contain raw eggs.

Myth #9: Once a hamburger turns brown in the middle, it is cooked to a safe internal temperature. **FACT:** The ONLY way to know that food has been cooked to a safe temperature is to use a food thermometer which is 160F for ground beef.

Myth #10: If I microwave food, the microwaves kill the bacteria, so it's safe. **FACT:** It's the heat generated by microwaves that kills bacteria in foods and it must be completely heated to a safe internal temperature.

Back-to-School Breakfasts for Busy Days

By Nancy C. Nelson
Meadowlark District Agent
Family Life

How many times have you heard that breakfast is the most important meal of the day? Read on for tips to help you start your day right.

According to an article in the *Journal of the American Dietetic Association*, some benefits of eating breakfast include:

- Better memory and better mood
- Better test scores and school attendance, and lower tardiness rates
- Decreased hyperactivity
- Decreased risk of being overweight, and lower cholesterol levels
- Higher intakes of vitamins A and C, riboflavin, calcium, zinc and iron

If it seems like you're too time-crunched in the morning to get a healthy start, try some of these fast fixes. You could get everything ready

the night before. If you wish, take breakfast along for the ride as you or the children head out the door.

- Whole wheat bread, toast, bagel or tortilla, spread with peanut butter or cheese, and an apple

- Ready-to-eat cereal in a bag, a cup of milk, and a banana

- Grits topped with cheese, and a cup of tomato juice

- Oatmeal with milk and canned peaches

- Toasted frozen waffle with peanut butter and applesauce

- Rice and beans with a piece of fruit

- Yogurt mixed with small bits of fruit and ready-to-eat cereal

- Leftover cooked rice, a hard-boiled egg and baby carrots

- Scrambled egg and cheese wrapped in a tortilla

If there is a picky eater in your family, offer two or three food choices to help

the child feel more in control. Having children help with breakfast is a nice way to start the day together. And remember, kids are more likely to eat breakfast when they see adults eating breakfast. So set a good example — you'll both benefit.

GRASS & GRAIN



Looking for an auction bill, hay prices or farm news? Subscribe to:

GRASS & GRAIN

Call 785-539-7558 or visit us ONLINE at www.grassandgrain.com



Praising the good

By Lou Ann Thomas

Being kind makes us feel good. It increases our levels of dopamine and oxytocin, creating what is known as a "Helper's High". But it's not just the givers and receivers of kindness who reap rewards. Even those who witness an act of kindness register elevated levels of these beneficial chemicals.

My cell phone taking a swim last week provided an unexpected opportunity for me to feel the advantages of receiving kindness as well as passing it on. Fortunately I had an older cell phone that I could re-activate. But I had to call customer service in order to achieve that.

I don't know about you, but calling tech support or customer service is one of my least favorite things to do. After navigating through a seemingly unending loop of pressing buttons to get to the right department, then another loop to find the right person, only to realize that isn't the right person and you must now either start over, or abandon the effort deciding you no longer need whatever has

now been rendered unusable.

With some travel on the horizon I needed a cell phone, so I reluctantly dialed the 800-number and began my journey through preferred language, reason for call, problem identification, etc. Eventually I got to Shaun.

Shaun sounded sympathetic to my issue and assured me she would do everything possible to help me. She asked questions, I answered them, and our dance began. But, again, nothing was working and both of us were feeling frustrated.

As hard as I tried to give up and accept that I would be traveling sans phone, Shaun kept urging me to hang in there with her, assuring me she was determined to get this rectified before she would let me go. It took nearly an hour, but eventually she did indeed find a very simple solution

INJECTION and TURBO, Inc. THE DIESEL SPECIALISTS

901 N.E. HWY. 24, SUITE 101, TOPEKA, KS 66617
785-233-4535/800-234-0719
FAX 785-233-6943

- DIESEL FUEL INJECTION
- TURBO CHARGERS
- SALES & SERVICE

CENTRAL KANSAS AG AVIATION

Book your Service, Lespedeza, & Fall Spraying Needs!



STEVE DONOVAN

Cellular: 785-366-0513 • Office: 785-258-3649

TIFFANY CATTLE CO., INC.

A Complete Cattle Feeding and Marketing Service

Tiffany Cattle Co. Family Owned And Operated

With a 15,000 head capacity, Tiffany Cattle Company is large enough to have economics of scale but small enough to provide personal attention. Pen sizes range from 50 to 200 head. A computerized summary of feed, cattle processing, veterinary services and other costs are easily accessible on each pen of cattle.



PRODUCTION SERVICES
Objective is simply: Least Cost Per Pound of Gain!
Ration formulation and cost analysis, health program designed and maintained by veterinarian, special pens and attention to sick animals, feed financing, and cattle purchasing available.

MARKETING SERVICES
Marketing finished cattle is top priority at Tiffany Cattle Company. You have the option of selling on the cash market, forward contracting or grid pricing through US Premium Beef.

US PREMIUM BEEF
www.uspb.com

- Risk management handled by Tiffany Cattle Company
- Locked commodity prices • Complete profit/loss statement for each pen
- All marketing decisions discussed with and approved by cattle owner
- Reward for your efforts in producing a quality product by selling your cattle on an industry competitive grid

1333 S. 2500 Road, Herington, KS 67449
Shawn Tiffany, Owner/Manager: 785-229-2902
Shane Tiffany, Owner/Manager: 785-466-6529
Office: 785-258-3721 • tiffanycaco@fhrrd.net

Buy Right Buy Now!



Are you looking to expand your grain drying and storage facility? The time to buy is now, and the brand to buy is Sukup!

On-farm storage is a great investment in your operation's profitability and Sukup has the equipment you need to put together the best system available. Call or stop in today to find out why.

Sukup

Contact:

F & L CONSTRUCTION

Frank Engelken
845 C Road
Centralia, KS 66415
785-857-3293

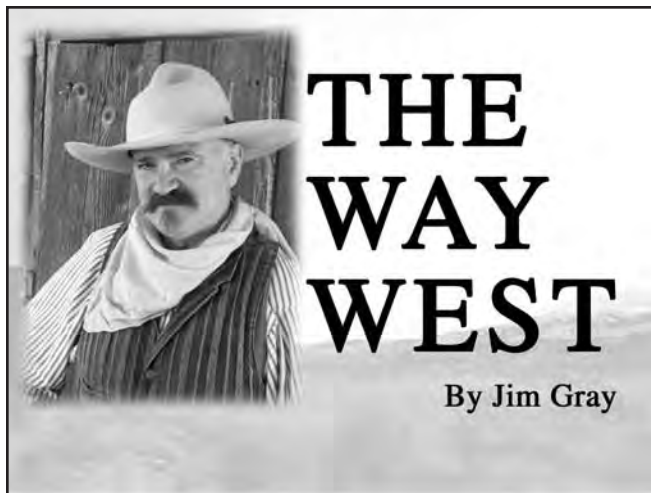
Joshua Engelken
4609 Grantham Drive
St. George, KS 66535
785-564-0642

Dauer Rotary Tree Saw



- **Heavy Duty Construction**
- **Quick Tach fits most skid steer loaders**
- **Complete with all hoses and couplers**
- **Ideal Operating Ranges:**
19 GPM 1350 RPM To 24 GPM 1850 RPM
- **Total Weight: 1220 Pounds**
- **Heavy Blade Available 2 sizes:**
1 1/2 x 23" or 1 1/2 x 26"
- **12 Replaceable Carbides**
- **Cuts Flush with Ground**
- **Optional 12 volt sprayer available**
- **Tucks between skid steer and saw**

MANUFACTURED BY:
Dauer Welding & Machine, Inc.
301 East Union Lindsborg, KS 67456
785-227-3531
www.dauerwelding.com • dauerwelding@sbcglobal.net



THE WAY WEST

By Jim Gray

A Journey Through Kansas in 1854

Can you imagine what it must have been like to step across the western Missouri border into the brand new territory of Kansas? In September of 1854 Charles B. Boynton and T. B. Mason did just that. Their assessment of Kansas was recorded in the book, *A Journey Through Kansas*, published one year

later in 1855.

They began their tour with a commission from The American Reform Tract and Book Society and the Kansas League, both based in Cincinnati, Ohio. Along with an associated small party of explorers they were commissioned "to explore and report upon the cli-

mate, soil, productions and general resources, and promises of Kansas."

St. Louis was the first destination for the travelers, noting that slavery was still tolerated in a city that should have long rejected "the death-power" for "a new career, and the enjoyment of a better life." In 1854 the new political policy of popular sovereignty left the slave question open for the new Kansas Territory. St. Louis was positioned to become the capital of southern commerce, especially if Kansas were to enter the Union as a slave state. And yet it was noted that one could observe within St. Louis a new life contending with the old. Contending with the influences of the free territory on its borders "the bands which lash the living to the dead, are loosening..." St. Louis was seen to also be about to "enter upon a new career, and the enjoyment of a better life."

A "river steambot" described as "partly amphibious" carried the party up the Missouri River over sandbars and snags, "the terrors of navigation." Even

though the shallows often offer so little water there is little likelihood to "float a boat," with coolness and skill a well-managed boat easily maneuvers, "from the manner in which they get out their legs and walk over the sandbars and shallows." The miracle is provided by way of "heavy spars" fifty feet long, set out over the sides, "like legs of giants..." (worked by the Captain) by means of the proper machinery, the boat literally walks over obstacles "like a thing of life."

For a fee of twelve dollars and three and a half days' time the travelers were able to reach Kansas City, a village of six hundred to one thousand inhabitants at the mouth of the Kansas River, situated within the state of Missouri. Long trains of wagons were preparing to set out on "the American Desert" for Santa Fe and California.

A short expedition was taken to the "squatter town" of Leavenworth thirty miles from Kansas City and just outside Fort Leavenworth. The fort was situated on a rolling bluff, "where scat-

tering forest trees give it the appearance of a cultivated park," of great beauty. Nearby Leavenworth City was established without official authority and therefore a squatter town. Its skeletal beginnings were mostly under the open sky or within the walls of canvas tents.

Following a brief visit to Weston, Missouri, the adventurers set out across the prairie for Fort Riley. The first hour's ride took the travelers by surprise. "The Kansas prairies cannot be described - mere words cannot reproduce in another's mind the impression which the scene has made, but if a man sees them... he feels the poverty of language - he finds no fitting words."

Words were miraculously found to describe the view of Fort Riley from the bluffs overlooking the river valley. The green meadows and pasture lands stretched away "to the limit of vision. Scattered stands of timber "resembled orchards or artificial groves, while the bluffs on either hand rose with outlines which, though bold, were so flowing and graceful that it was a pleas-

ure to the eye to rest on them." The deep black soil on the river bottoms "seemed equal to man's utmost desire... On the Kansas river (the bottoms) are often five or six miles broad, and in fertility they are probably not surpassed by any lands on the continent."

Boynton and Mason traveled mostly along the Kansas River valley and published a great deal of information about Kansas. They concluded, that colonists were needed to secure the territory for free men in place of slavery saying, "A colony from almost any point in the northern States can be located on some of the most fertile lands of earth." Kansas in 1854 was young, and filled with promise of something new and exceptional on The Way West.

"The Cowboy," Jim Gray is author of the book *Desperate Seed: Ellsworth Kansas on the Violent Frontier, Executive Director of the National Drovers Hall of Fame. Contact Kansas Cowboy, P.O. Box 62, Ellsworth, KS 67439. Phone 785-531-2058 or kansascowboy@kans.com*

COTTAGE HILL AG SUPPLY

★ Waterville, Kansas ★

- Clark's Seed Tenders
- Kilbros Seed Tenders
- Precision Planting
- Martin Row Cleaners

Channel. Seedsmanship At Work



Precision PLANTING

COTTAGE HILL AG SUPPLY

785-313-6101 • djacobson@bluevalley.net



Wheat Growers welcome trade enforcement action on Chinese Market Support Programs

U.S. Wheat Associates (USW) and the National Association of Wheat Growers (NAWG) welcome the Obama administration's trade enforcement action against China at the World Trade Organization (WTO). The significant investigative effort by the Office of the U.S. Trade Representative (USTR) and the U.S. Department of Agriculture (USDA) followed five years of work by USW, NAWG and other industry partners to demonstrate how China's domestic support policies hurt U.S. farmers.

This enforcement action challenges the level of China's trade-distorting market price support programs for wheat as well as for corn and rice. In describing its action, USTR said "the level of support provided through these programs in excess of China's commitment was nearly \$100 billion."

These programs cost U.S. wheat farmers between \$650 and \$700 million annually in lost income by pre-empting

export opportunity and suppressing global prices, according to a 2016 Iowa State University study sponsored by USW associates. That loss estimate is actually 19 percent more than the losses estimated by a similar 2015 study due to the effect of increasing global stocks and resulting market price decline.

"Wheat production subsidies in China and other advanced developing countries are the single biggest

policy issue affecting our farm gate prices and global trade flows," said USW associates president Alan Tracy. "In taking this step, USTR and USDA are demonstrating that trade enforcement can ensure that our many trade agreements and a pro-trade agenda really work for American farmers."

"This enforcement action shows a welcome willingness to defend farmers against governments that blatantly disregard the

rules of the road under their trade agreements," said NAWG president Gordon Stoner, a wheat grower from Outlook, Mont. "It comes at a critical time for farmers who have seen market prices collapse to unsustainable levels in recent years."

A 2014 study by DTB Associates, also sponsored by USW, showed that China's minimum procurement price of about \$10 per bushel for wheat, in addition to other subsidies, violates China's WTO commitments. That market price support is so high that the Chinese government has to purchase and store enormous stocks of domestic wheat. As a result, USDA estimates that by June 2017, China will hold 44 percent of the world's wheat stocks, which will be at record levels and further depress market prices. This also hurts Chinese flour millers who are forced to purchase overpriced domestic wheat from these stocks and hurts their customers who pay more for the flour.

Noted Iowa State University agricultural economist Dr. Dermot Hayes conducted the 2015 and 2016 studies of domestic support effects. In reviewing the 2016 study results, which compared a base case including China's current support to a new scenario in which the factors represented by China's policies were removed, Dr. Hayes said farmers there would grow less wheat because domestic prices would fall and input costs would increase.

"In our comparison, that would benefit farmers in the United States and other wheat exporting countries as China would need to increase its imports to more than 9 million metric tons," Dr. Hayes said. "The corresponding lift in wheat exports would increase U.S. farm income from wheat by 19 cents per bushel."

"Especially in a time when Kansas wheat farmers are facing low commodity prices, we applaud the USTR's efforts to ensure a fair and level playing field in the global marketplace for wheat growers," said Justin Gilpin, CEO of Kansas Wheat.

THIRTY 30 SERIES
HYDRABED

from **TRIPLE C**

MILLER RANCH EQUIPMENT
Alma, KS (785) 765-3588
www.millerranchequipment.com



from **TRIPLE C**



Ryan Benfer, shown with judge Coffman Liggett, showed both the grand and reserve champion dairy cow at the Clay County Fair.

FARM AUCTION

SATURDAY, SEPTEMBER 24 — 10:00 AM

LOCATION: 274545 K-62 Hwy. North edge of SOLIDER, KANSAS on west side of Highway.

TRACTORS & EQUIP., TOOLS, MISC., COLLECTIBLES & GUNS, TRUCKS & TRAILERS

See last week's Grass & Grain for listings & pictures!

WARREN & ELSIE HAMILTON, OWNER

Sale conducted by **DAN DETERS AUCTION COMPANY AUCTIONEERS**

DAN DETERS, Cell: 785-336-1622 • Home: 785-868-2591
Dale Wilhelm, 785-336-3501 • Rodney Burdick: 785-207-0433

Farm and Ranch POLE BARNS



Santee Structural

Farm and Ranch Structures

Hay Barns

Stock Shelters

Feed Bunks

Horse Stables

Garages

Horse Arenas

Foam Insulation Packages Available at \$1.20 SQ/FT

Contact Sales: **785-207-1955**

Building Solutions You Can Trust

"Experience the Difference"



Engineered Wood Framed Metal Buildings
Call for FREE ESTIMATE or visit our Website

For on-line pricing
Building Materials and do it yourself
Building kits available.

K-Construction Inc.

Alta Vista, KS
785-499-5296
www.k-constructioninc.com

Abilene rodeo nominated one of top 5 PRCA medium-sized rodeos

For the sixth time, the Wild Bill Hickok Rodeo in Abilene has been nominated as one of the top five medium sized rodeos in the nation.

Nominees in eleven other categories were also announced, including small rodeo of the year, large outdoor rodeo of the year, large indoor rodeo of the year,

and personnel categories.

Along with its rodeo, Abilene rodeo announcer Mike Mathis was nominated as one of the top five announcers in the nation, as well as several rodeo clowns who have worked the Abilene rodeo: Gizmo McCracken (2008, 2012 and 2016), John Harrison (2014), and Keith Isley (1999).

It's an honor, said Jerry Marsteller, chairman of the committee. "It's a goal of this committee," he said, "to be nominated. We try to do everything right. We look to hire people who are able to put on a show, with top quality professionals. We try to have the arena in the best condition for the contestants and the stock contractor, and we make sure we have hospitality for the cowboys."

Marsteller didn't believe it when he first got the phone call. "I was so shocked, I had to absorb it all," he said. There are 161 rodeos in the medium category, Marsteller said, "so to be in the top five out of that many, that's darn good."

The rodeo committee strives to put on a quality show. "We are in the entertainment business, so you have to hire the right per-

sonnel to entertain the people who buy a ticket."

The PRCA's designation of medium-sized rodeos includes all rodeos whose added money is between \$3,000 and \$9,999. The Abilene rodeo added \$3,750 per event for the bareback riding, tie-down roping, team roping, steer wrestling, and barrel racing, and \$7500 for the saddle bronc riding and the bull riding.

The other four rodeos nominated in the category of medium rodeos are Coleman, Texas, Deadwood, S.D. Lufkin, Texas, and Stephenville, Texas.

Winners will be announced during the PRCA's Awards Ceremony in Las Vegas on November 30.

The 2017 rodeo is August 2-5. The Abilene rodeo was previously nominated for the award in 1995, 2001, 2008, 2010, and 2011.



Kaylee Toews, shown with judge Samantha Trehal, led the grand champion market lamb at the Clay County Fair.

Let us help you **RECLAIM YOUR PROPERTY** that has been overgrown with brush & trees!

WE OFFER:

- New Holland 232 high flow machine with tracks for speed & strength.
- For cutting trees: a turbo tree saw with a rotating head & stump sprayer that also allows for tree trimming along fields.
- Pile up all of the debris for burning with grapple and cut off trees flush with the ground.

WE ALSO DO DIRT WORK!

Please call or text Allen for pricing & scheduling 785-249-9788



Superior genetics ... locally grown™

AgriPro®

DRUSSEL SEED & SUPPLY INC.
Garden City, KS
620-275-2359
**SY Grit, SY Monument,
SY Sunrise, TAM111**

KAUFFMAN SEEDS
Haven, KS
620-465-2245
620-727-3567
**SY Flint, SY Monument,
AP503CL² Jackpot, LLANO**

E&H FARMS, INC.
Weskan, KS
785-943-5386
AP503CL², TAM111

KRAMER SEED FARMS
Hugoton, KS
620-544-4330
**Dumas, Jagalene, TAM111,
PostRock, Greer, AP503CL²,
SY Wolf, SY Monument,
SY Flint, SY Sunrise**

LOBMEYER SEED FARMS
Garden City, KS
620-272-6839
**SY Monument, SY Sunrise,
TAM111**

POLANSKY SEED
Belleville, KS
800-372-2271
**SY Monument, SY Flint, SY
Sunrise, SY Wolf, AP503CL²,
SY Southwind, SY Gold**

MILLER SEED FARMS
Partridge, KS
800-567-3125
**SY Flint, SY Monument,
AP503CL², Jackpot**

SEEMAN FARMS
Larned, KS
620-285-5288 • 620-285-3471
**TAM111, Jackpot,
SY Southwind, AP503CL²,
SY Monument, SY Flint**

SHARP BROS. SEED CO.
Healy, KS
800-462-8483
SY Monument

TISCHHAUSER SEEDS, INC
Wilsey, KS
785-497-2888
**SY Monument, SY Wolf,
SY Flint**

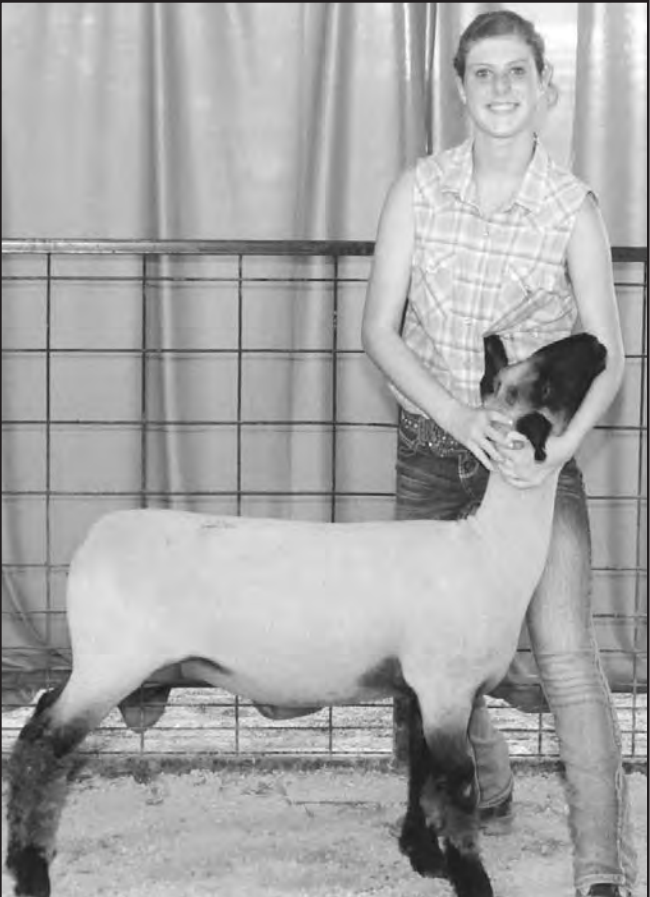
SOLOMON RAPIDS SEED, INC.
Beloit, KS: 785-738-5134
Osborne, KS: 785-346-2104
**SY Flint, SY Monument, SY
Wolf, AP503CL², PostRock**

SIPES SEED SALES INC.
Manter, KS
620-493-4693
SY Monument, Tam111

MATTSON FARMS
Colby, KS
785-586-2313
**SY Monument, SY Wolf,
Tam111, AP503CL²,
SY Sunrise**

STAR SEED
Osborne, KS
785-346-5447
**SY Monument, AP503CL²,
SY Sunrise, SY Flint, SY Wolf**

CALL US FOR ALL YOUR SEED NEEDS!



Leading the reserve champion breeding ewe at the Clay County Fair was Samantha McClure.



In a study of contrasts, antique tractors plowed the land with a modern-day wind turbine in the background as a world record was set near Concordia.

Photo by Amy Hadachek

AUCTION

SATURDAY, SEPTEMBER 24 — 9:00 AM

From I-70 exit 275 at Abilene, Ks. go 6 miles north on Highway 15 to the junction with Highway 18, then continue north 4 miles on Hawk Rd. (old Highway 15) to 3406 Hawk Rd.

**ANTIQUÉ AUTOMOBILES & PARTS,
ANTIQUES & PRIMITIVES, GUNS & MISCELLANEOUS**

**Go to kretzauctions.com or kansasauctions.net for pictures,
map and any updates. Hope to be done by one o'clock.**

LUNCH: New Basel Women's Fellowship. For info about items to be sold call Gregg and Joleen Beemer at (785) 479-2197

LAWRENCE SHETTER TRUST, SELLER

Auction conducted by:

Kretz & Bloom Auction Service
Greg: (785) 630-0701 • Chad: (785) 632-0846

World record set at Concordia plowing event

By Amy G. Hadachek

In an impressive event, a steam engine record was achieved in a new category for the Guinness Book of World Records in rural Concordia on Saturday, September 10th. An estimated 2,500 visitors walked or were transported on hay trailers and all-terrain vehicles out to a massive field west of Highway 81 and Hawk Road. Enamored by the shiny restored steam engines as each sounded its whistle upon arrival, the crowd watched patiently as the gallant antique tractors moved at two miles an hour, lined up, and then simultaneously traveled across the field.

"We set the record, and that was a pretty good deal!" exclaimed Kurt Kocher, co-organizer with Brad Smith and Cloud County Tourism. "We plowed for five minutes with nine steam engines, all at the same time, which was the requirement," said Kocher, who farms wheat, corn, grain

sorgum, soybeans, and has a cow calf operation in southern Cloud County. Smith runs an industrial demolition business and a scrap yard in Scottsville with his father.

A visitor, Myron Cailteux of Manhattan, who's retired from farming and a 30-year wastewater treatment plant career, traveled to the site with buddy Don Benninga. While admiring a restored 1927 Caterpillar Crawler, Cailteux said, "Just enjoying the day," a sentiment echoed by many.

Kocher and Smith were impressed that after the original rain delay two weeks prior, the rescheduled September day attracted so many.

"We had great volunteers who helped so much. We hope to do it again as a free event for the community, by securing sponsors next year," said Smith, noting, "Now the Guinness folks will verify the records with the video and it'll go up on their website."

**Owned by Farmers.
Powered by Nature.
Driven by Innovation.**



**Iron Horse Farm Seed Co. • 620-654-3907 • Galva, KS
Varieties: *LCS Mint, LCS Pistol, T158***

**Timken Seed Farms • 785-355-2285 • Timken, KS
Varieties: *LCS Mint***

**Tischhauser Seeds • 785-497-2888 • Wilsey, KS
Varieties: *LCS Mint, LCS Wizard, LCS Pistol***

**Wildcat Agri Service • 316-772-7171 • Sedgwick, KS
Varieties: *LCS Pistol, LCS Mint, T158***

**Calvin Bonhert • 785-738-7589 • Jewell, KS
Varieties: *LCS Mint***

**Mattson Farms • 785-586-2313 • Colby, KS
Varieties: *T158***

**Kauffman Seeds • 800-634-2836 • Haven, KS
Varieties: *LCS Chrome, T158, LCS Wizard, T173,
LCS Pistol, LCS Mint***

**Gamble Farms • 620-546-3545 • Greensburg, KS
Varieties: *LCS Mint***

**Polansky Seed • 800-372-2271 • Belleville, KS
Varieties: *LCS Mint, T158, LCS Pistol, LCS Wizard***

**Miller Seed Farms • 800-567-3125 • Partridge, KS
Varieties: *LCS Mint, LCS Pistol, LCS Wizard, T154***

**ECO Farms INC. • 785-846-7812 • Monument, KS
Varieties: *LCS Mint, LCS Pistol***

**Dave Lane • 316-650-3835 • Goddard, KS
Varieties: *LCS Pistol***

**Carl Wahlmeier • 785-678-2476 • Jennings, KS
Varieties: *T158, LCS Mint, LCS Wizard***

**Neufeldt Seed Farms • 620-921-5529 • Inman, KS
Varieties: *LCS Mint, T158***

**Le Clair Seeds • 785-410-2851 • Clifton, KS
Varieties: *T173, LCS Pistol***

**Ruetti Feed Service • 785-292-4676 • 785-562-6987
Frankfort, KS • Varieties: *LCS Mint, LCS Pistol, T158***

**Solomon Rapids Seeds • 785-738-5134 • Beloit, KS
785-346-2104 • Osborne, KS • Varieties: *LCS
Chrome, LCS Mint, LCS Pistol, LCS Wizard, T154***

**Call A Dealer Near
You Today!**

AROUND KANSAS



I love fall. I love the smells, the decorations, the cooling weather, and the food. Apples are coming in, all kinds of fruits and squashes. But no fruit or vegetable captures the imagination like the pumpkin.

Cinderella used it as a coach; Peter, Peter, Pumpkin Eater kept his wife inside its shell; Charlie Brown fell asleep awaiting the arrival of the Great one. It scares us, it entertains us, it feeds us. My favorite scene from all the Harry Potter movies is Hagrid's pumpkin

patch.

Aren't those pumpkins wonderful? Don't they conjure images of coaches and dwelling places for little beings? There is a wonderful mystery to a pumpkin.

Now comes the season for pumpkin pie, pumpkin soup, pumpkin bread, pumpkin ale, pumpkin truffle... oh my. My friend, Bryce Benedict, used to grow hops to make his own pumpkin ale which he generously shared a couple of years ago. It made the best cheddar ale soup I have ever tasted. The pumpkin flavor

was just the extra touch to make it interesting.

The website All About Pumpkins lists dozens of varieties and gives us a little history.

"Pumpkins and squash are believed to have originated in the ancient Americas. These early pumpkins were not the traditional round orange upright jack-o'-lantern fruit we think of today when you hear the word pumpkin. They were a crooked neck variety which stored well. Archeologists have determined that variations of squash and pumpkins were cultivated along river and creek banks along with sunflowers and beans. This took place long before the emergence of maize (corn). After maize was introduced, ancient farmers learned to grow squash with maize and beans using the 'Three Sisters' tradition."

According to Pumpkin Patches and More, the tradition of carving a jack-o'-lantern from the pumpkin began in Scotland and Ireland (well, of course!). Except, they used turnips, since pumpkins were native to the New World. Can you imagine homes decked out in turnips, or being scared to your stocking feet by a candle inside a turnip? Well, my friend Ian Hall, token Scotsman, verifies the tale and adds that the turnips were pretty hard to carve!

And now, dear readers, I'm off to the pumpkin patch.

Deb Goodrich is the co-host of Around Kansas TV Show and the co-author (with Michelle Martin) of Kansas Forts and Bases: Sentinels on the Prairie. Contact her at author.debgoodrich@gmail.com and find her and Around Kansas on Facebook.



Judge Coffman Liggett selected Maggie Sleichter's steer as Clay County Fair's reserve champion beef animal.

Record production forecast for fall crops

Based on September 1 conditions, Kansas's 2016 corn production is forecast at a record high 687 million bushels, 18 percent above last year, according to the USDA's National Agricultural Statistics Service. Area to be harvested for grain, at 4.55 million acres, is up 16 percent from a year ago. Yield is forecast at 151 bushels per acre, up 3 bushels from last year. Sorghum for grain produc-

tion in Kansas is forecast at 255 million bushels, down 9 percent from last year. Area for harvest, at 2.90 million acres, is down 9 percent from 2015. Record yield is forecast at 88 bushels per acre, unchanged from last year. This would tie the record yield from 2009 and 2015.

Kansas's soybean production is forecast at a record high of 181 million bushels, up 22 percent from

last year. Area for harvest, at 4.11 million acres, is 6 percent above 2015. Yield is forecast at 44 bushels per acre, up 5.5 bushels from last year.

Cotton production is forecast at 55,000 bales, up 57 percent from last year. Acreage for harvest, at 31,000 acres, is up 15,000 acres from 2015. Yield is forecast at 852 pounds per acre, down 198 pounds per acre from a year ago.

Compacted soils: a forgotten yield limiter

By Jeri Geren,
Crop Production Agent,
Wildcat Extension District

Crop harvest is an exciting time for most producers. It is often joked that planting, fertilizing and spraying are all done solely for the chance to get to ride around in the combine. Although most farmers take much pride in every farming practice they endeavor in, it's always nice to get the crop off the field and a paycheck in the pocket. The downfall to row crop harvest is not what's taken off the field, but rather the potential soil compaction that may be occurring below ground.

Compaction can be caused by a variety of issues within the soil. Naturally dense soils, surface crusting and cultural practices can all contribute to compaction. One specifically prevalent during harvest is vehicle-induced compaction. This can be divided into two types, shallow and deep.

Shallow compaction is defined as any compaction occurring within the normal tillage zone. This can be from five to ten inches deep depending on the location.

Shallow compaction is related to the pressure applied to the surface of the soil and is considered temporary since it is usually eliminated by normal tillage practices.

Deep compaction, or sub-soil compaction, occurs below the normal tillage zone and is caused by weight or force applied to the soil. It is mostly affected by the maximum axle weight. A moist soil can be compacted to a depth greater than 18 inches by a ten-ton axle load. To put this into perspective, consider that the weight of a 1,050 bushel grain cart is 19,700 pounds when empty. When filled, it can weigh over 78,500 pounds. The grain cart can transfer about 8,000 pounds to the tractor through the tongue of the wagon, so the grand total is 70,500 pounds. If the grain cart has two axles, that comes to 17.6 tons per axle. In addition, a 12-row combine full of corn exceeds 20 tons per axle. Both of these examples have exceeded the ten-ton axle load limit.

If compaction is suspected, look for malformed plant roots, standing water

or excessive water erosion, increased power requirements for field operation, stunted plant growth and reduced yields. Also note that yields will be most affected in a dry year since soil strength increases as soils dry.

The best cure for compaction is to avoid it. To reduce the potential and minimize compaction, limit traffic when fields are wet, and confine the majority of the traffic to the end rows as much as possible.

If you have questions or would like more information, please call me at the office (620) 331-2690 or email me at jlsigle@ksu.edu, or visit the Wildcat Extension District website at www.wildcatdistrict.ksu.edu.



SANKEY'S 6N RANCH ANNUAL

Fall Female

SALE

SATURDAY, SEPTEMBER 24TH

1 P.M. • COUNCIL GROVE, KS

AAA. 16632067

Limestone Arkdalepride X209
SELLS BRED TO BASIN PAYWEIGHT
1682

AAA. 18505551

Sankeys Cimarron 609 of YBBF
SAC CONVERSATION X
ARKDALEPRIDE X209

AAA. 18505552

Sankeys Arkdalepride 606
SAC CONVERSATION X
ARKDALEPRIDE X209

We invite you to join us on Saturday, September 24th at 1 p.m. in Council Grove, Kansas for our Fall Female sale. We will be offering an elite group of cow/calf pairs, bred heifers, fancy heifer calves, registered Angus steers & embryo packages. Call, text or eMail for a sale catalog!

SANKEY'S 6N RANCH

CHRIS & SHAREE SANKEY
1121 Lake Rd. • Council Grove, KS
620.343.0456 • 620.343.0288
sankeys6nranch@yahoo.com
www.sankeys6nranch.com

Hurlbut

DUSTIN, JEANA & BAYLER HURLBUT
17175 416th Ave. Raymond, SD
605.380.8052 • 402.682.2570

SANKEY ANGUS

CODY, LINDSAY & CAROLINE SANKEY
13797 US Hwy. 35 • Economy, IN
517.749.5556 • cody.sankey@gmail.com

YAGGY PLANTATION

Hutchinson, Kansas - Reno County

- 130 Years & 5 Generations of Yaggy Family History
- Over a Mile of Frontage Along the Arkansas River
- 819± Acres of Prime Farmland with 3 Center Pivots
- Permits Approved for 2 Additional Center Pivots
- Trophy Whitetail, Quail, Pheasant & Turkey
- 3 Miles from Downtown Hutchinson, KS
- Excellent Crop Yield History

1,260± Acres

Offered in 5 Tracts & Combinations

LAND AUCTION

Wednesday, October 5th • 1pm

Held at the Cosmosphere - Hutchinson, KS

PROPERTY INFORMATION DATES & LOCATION:
Meet us on Tract 1, 4603 Nickerson Blvd., Hutchinson, KS

Wednesday, September 7th • 10-12 pm

Wednesday, September 21st • 10-12 pm

CALL FOR BROCHURE

800.829.8747 | www.HallandHall.com

Harbstreit eyes end of career that has spanned a half century

Steve Harbstreit remembers the days when a little encouragement from a seventh grade agriculture teacher in Indiana and later a high school agriculture teacher in Missouri spurred him on to a career of serving others.

Nearly a half-century later, Harbstreit has carved out quite a legacy in Kansas for serving agricultural education, having directly taught, mentored or graduated 128 of the current 223 teachers in the state.

Harbstreit, an associate professor in the Kansas State University College of Agriculture, recently announced that he will retire in January, 2017. He has taught agricultural education at Kansas State University since 1987.

During his time in Kansas, agricultural education has grown from about 160 sites to more than 200 teachers and 185 programs. Harbstreit notes that the number of high school students in agricultural education grows consistently, and agricultural education is becoming more common in urban areas.

Harbstreit notes that a hallmark of the Kansas State University program is that he and others interact with graduates throughout their professional career.

Harbstreit grew up in

southern Indiana and Missouri where he participated in 4-H and FFA. He earned a bachelor's degree in agricultural education from the University of Missouri in 1971, a master's degree in education from Northwest Missouri State University in 1977, and a doctoral degree from the University of Missouri in 1987.

He taught high school agricultural education in northwest Missouri for 13 years.

He is a member of the American Association for Agricultural Education; the National Association of Agricultural Educators and Kansas Association of Agricultural Educators; and the Association of Career and Technical Education and Kansas Association of Career and Technical Education, the latter of which recently honored him with a Lifetime Achievement Award.

Harbstreit also received notice that he will receive the VIP award from the National FFA organization at its convention in October.

In retirement, Harbstreit said he plans to travel, spend time with family, and keep on serving others. He has plans to work on a national curriculum for agricultural mechanics, and he'd like to lead workshops for teachers.



Leading the grand champion meat goat at the Clay County Fair was Lainie Sleichter, shown with judge Samantha Trehal.

Wheat quality test results released

Preliminary data for the 2016 crop year from 12,087 carlot samples from 46 counties showed an average test weight of 60.5 pounds per bushel, according to the USDA's National Agricultural Statistics Service and Kansas Grain Inspection Service Inc. For comparison purposes, last year's crop averaged 59.9 pounds, while the 2005-2014 average was 60.8 pounds per bushel.

Protein content averaged 11.7 percent, down from 12.7 percent for 2015, and below the ten-year average of 12.4 percent. The East Central District had the highest protein content at 12.4. Statewide, moisture content averaged 11.2 percent, equal to 11.2 percent last year, and near the 10-year average of 11.3.

Samples of wheat grading No. 1, at 56 percent, were up from 53 percent last year. Forty-one percent graded No. 2, compared to 38 percent in 2015, and 3 percent graded No. 3 or below. Wheat samples averaged 0.3 percent damaged kernels, down 0.2 percentage points from 2015, and equal to the 10-year average. Samples tested had 0.0 percent foreign material on average, down 0.1 percentage point from last year and the ten-year average. Shrunken and broken kernels averaged 1.1 percent, down 0.4 percentage points from 2015 and down 0.1 percentage point from the ten-year average. Total defects averaged 1.5 percent, down 0.5 percentage points from 2015 and down 0.1 percentage point from the ten-year average. Average dockage for all samples was 0.6 percent, equal to last year.

There were 5,423 samples voluntarily submitted for inspection in the 2016 crop year. The test weight for these samples averaged 59.5 pounds per bushel, while protein was 11.8 percent and moisture content averaged 11.3 percent. Sixty-six percent of the submitted samples graded No. 1 while 21 percent graded No. 2 and 13 percent graded No. 3 or below.

This is the only wheat quality release for the 2016 wheat harvest. Test weight, protein content, grade and defect determinations are made by Kansas Grain Inspection Service Inc. The data are summarized by the USDA's National Agricultural Statistics Service. Collection and publication services are funded by the Kansas Wheat Commission.



The grand champion beef at the Clay County Fair was shown by Keaton James, pictured with judge Coffman Liggett.

Solomon-Republican Regional Advisory Committee meeting to be held in Downs Sept. 27

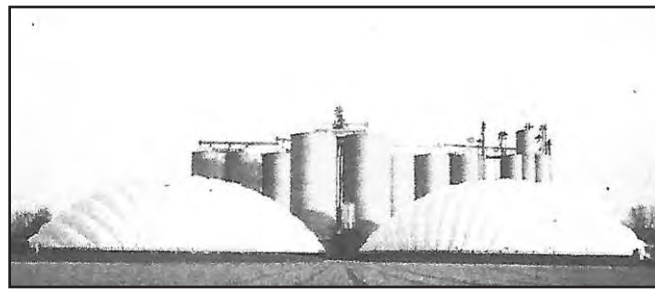
The Kansas Water Office's (KWO) Solomon-Republican Regional Advisory Committee (RAC) will hold a meeting to discuss regional goals and priorities.

The meeting will be held Tuesday, September 27, 10 a.m. in the Pioneer Seeds Meeting Room, 240 W. US Highway 24 in Downs d. The agenda will include the Vision Education and Public Outreach presentation and an update on the Republican River Compact (RRC) changes. There will also be a KBID update and discussion on the land practices in White Rock Creek.

The agenda and meeting materials will be available at www.kwo.org or you may request copies by calling (785) 296-3185 or toll-free at (888) KAN-WATER (526-9283).

If accommodations are needed for a person with disabilities, please notify the Kansas Water Office at 900 SW Jackson Street, Suite 404, Topeka, KS 66611-1249 or call (785) 296-3185 at least five working days prior to the meeting.

GRASS & GRAIN NEW PRODUCT PROFILE



Inflatable grain storage system introduced by Charter Matrix, Inc.

Charter Matrix Group, Inc. announces the introduction of a cost-competitive inflatable flat grain storage system for farm use. Capacity is in the range of 21,000 to 25,000 bushels and the system can be erected in under one day. It has a single or three-phase power operation with an LP stand-

by. The system will accommodate radial aeration for long-term storage. No additional fan sets are needed. The "Farm Grain Storage System" is a scaled-down version of their 1,000,000 bushel commercial grain domes, shown in the picture. For more information phone 785-825-5599.



The reserve champion mare at the Clay County Fair was shown by Mahalia Hickman.



"The Right Move" CAN MAKE A DIFFERENCE
Introducing "\$100/100K"

I strive to treat customers with a personal real estate experience and part of that is to support organizations they see as important. Accordingly, I have initiated partnerships with each of the following entities:



KANSAS
FFA FOUNDATION



KANSAS 4-H
FOUNDATION

K-State College of Agriculture

For each buyer's agency, real estate listing, or auction contract originated September 1 to November 1 with me, I will personally donate \$100 per \$100,000 of the contract value at closing to the selected organization of my client(s). Donations can be allocated to the LOCAL or STATE level of the organization chosen.

Call me for details!

Bill Disberger
REALTOR®
620-921-5642
bill@kscrossroads.com

www.kscrossroads.com
Manhattan, KS
Office (785)-539-2732



Helms Construction & Fencing

Top Of The Line Barbed Wire & Feedlot Construction.



785-410-4070

AUCTION

SATURDAY, SEPTEMBER 24 — 9:00 AM

587 North 950th Rd. — Lawrence, KS
1 Mile South of Lawrence on Hwy 59 & turn Southwest 7 Miles on Dg. 458 to Auction! Watch For Signs!!

TRUCK, CAMPER, ATV, EQUIPMENT, HOT TUB, ELECTRIC WHEELCHAIR, WINCHESTER FIREARMS SAFE, COLLECTIBLES, HOUSEHOLD, MISC.

See last week's Grass & Grain for listings & Please visit us online www.KansasAuctions.net/elston for 100+ pics!

Concessions: Crimson Blue BBQ.

SELLER: MRS. (KENNETH) CATHY WYRICK

Auctioneers: ELSTON AUCTIONS • 785-594-0505, 785-218-7851
"Serving Your Auction Needs Since 1994"

LAND AUCTION • INVEST IN LAND! 1490 ACRE ELK COUNTY KANSAS RANCH

FRIDAY, OCTOBER 14 — 11:00 AM

AUCTION LOCATION: COX COMMUNITY BUILDING,
100 W. WASHINGTON ST, HOWARD, KS 67349

1490+ Acres Of Rolling Native Cattle Grazing Pasture. 10 Ponds • Wet Weather Draws • Excellent Fence Cross Fenced Into 3 Grazing Units, Centrally Located Pens

LAND LOCATION: From Howard Kansas, 6 1/2 miles East on Limestone Rd to Road 23, then 1 mile South.

SUNDGREN AUCTION & REALTY • WWW.SUNDGREN.COM
JOE SUNDGREN, 316-377-7112
RICK REMSBERG, 316-322-5391
JEREMY SUNDGREN 316-377-0013

Diversification, family, and community lay foundation for success

By Tom Parker

Jay Schwinn was living the American dream as a Merrill Lynch executive when the entire U.S. financial sector imploded in 2008. After being bought out, he called his brother, Joe, asking if he could use a partner on his small vegetable farm outside Leavenworth. His brother, while apologetic, was firm: no way could they grow enough vegetables to support the two of them.

Fair enough, Jay thought, vegetables are out. But what about something else, something non-vegetative, something that would both complement the farm and enhance its profitability? With a half-formed idea percolating through his head, he booked a flight back to a life he thought he had left behind.

Like Schwinn, Don and Loretta Craig, casualties of corporate consolidations, found themselves turning to an agrarian lifestyle that was both familiar and utterly baffling. As they settled into their new lives on a 20-acre hayfield in Basehor, their plans revolved around creating a homestead, not a farm, a distinction based upon an independence from everything they had worked for and believed in.

When Ed and Alice Theis founded April Valley Farms in 1956, they had 12 registered Angus females and six bred gilts, plus wheat, corn and hay under cultivation. As the farm expanded and diversified into row crop production, a registered Angus cow operation and a farrow-to-finish swine operation, three of their four sons — Mark, Jerry and Larry — are introducing new technologies that will make the farm more efficient and productive while still adhering to their father's vision.

Their stories and their farms were the focus of the second Summer Fun Farm Tour, sponsored in part by Kansas Farmers Union and the Farmer Veteran Coalition of Kansas. Three tours were planned for August, each comprising three different urban or semi-rural farms in the greater Kansas City metropolitan area. Afternoon presentations on topics such as the basics of grant-writing, new regulations on food safety for produce growers and business planning followed meals prepared using vegetables and meats supplied by the local producers. There was no cost for the tours.

For the Theis family, the secret to the success of April Valley Farms was diversification. In the beginning, though, hogs were the focus, said Mark Theis, who heads up the swine operation.

"Dad set up to market 30 hogs per week," he said. "I was 14 years old when I learned to drive a truck of

hogs to St. Joe, and we went every week. That was dad's goal."

Hogs, he said, provided a cushion against wildly fluctuating prices. "So you hit the highs, you hit the lows, the good, the bad, the high corn market, the low corn market — it was very unique."

Every step of the operation is tightly managed to run on schedule, and has been since 1979. Sows are weaned on Mondays, bred on weekends, and alternated through a hot nursery to a floor-type pen for 21 days each and finished in a hoop house. "It's like factory clockwork — boom, boom, boom," Mark said.

The regimen, as well as carefully controlled artificial insemination and infrastructure improvements, has paid off. The farm has consistently earned premium prices on the hogs, he said.

The family has invested in facilities such as a 24-sow farrowing building with a caged nursery, a cattle handling chute equipped with electronic scales, and other infrastructure.

The row crop operation is headed by Larry. Due to the size of their operation — they farm land for 48 individuals across several counties in addition to growing corn, soybeans and wheat on their own land — they've turned to technology to become more efficient. Grid sampling and yield monitors have allowed them to save money and time, he said.

Jerry Theis heads up the cow side of the operation but, in a pinch, everyone helps out as needed. "We're all responsible in some ways for everything when it's crunch time," he said.

Having their children and grandchildren assist them has made the farm even more productive, he said. "There's a spot for everybody, and everybody's needed," he said.

The second stop of the morning, Schwinn Produce Farm, is owned by the Schwinn brothers, Jay and Joe. It can best be understood as two separate businesses sharing the same acreage. Standing in the parking lot in front of a picturesque barn, Joe pointed to an area behind the tour participants.

"We grew up around 1,800 feet from here," he said. "When I was five and Jay was eight, we started selling sweet corn and tomatoes on the corner. The new highway wasn't there so this was the main road. Our first summer we each made \$20 to take to the county fair. We thought we were big-time."

After Jay went to work at nearby April Valley Farms, Joe kept working the vegetable patch. "It was a 4-H project that just kept going," he said. He earned a horticulture degree from K-State,

built a greenhouse and borrowed money to buy a sprayer, just in time for a drought. It was his introduction to farming on a larger scale.

That was in 1991. Since then, a greenhouse and two hoop houses have been added for starting transplants and bedding plants. Most of the produce is sold at the Leavenworth farmers market, which, Joe said, has been a mixed blessing. "The good news is that the Leavenworth farmers' market has gotten real good," he said. "The bad news is that the Leavenworth farmers' market has gotten real good. We don't sell a lot at the farm anymore."

Branching off into pick-your-own strawberries and pumpkins has been successful, but again, not without conflicts — namely, the big barn that dominates the view.

The 4,500-square-foot barn was Jay's idea, based on a similar idea of a friend's. Named, appropriately, the Barn at Schwinn Produce, the timber frame and wood peg structure is the centerpiece of a wedding venue that includes a small cottage for brides, a photo-worthy sunflower patch and an outdoor ceremony area carpeted with turf. More than 80 weddings were held there last year, and this year every weekend is booked including others throughout the week.

"The barn's been very good to us from a business standpoint," Joe said, "but it's kind of hurt us from an agricultural standpoint because we can't do U-pick as much as we'd like to." The single parking lot, while extensive, isn't large enough to handle wedding parties and pick-your-own customers simultaneously, so the Schwinn brothers are looking for additional ground for expansion.

First, though, Joe would like to see an improvement in the weather.

"I'd like to see a May and June where it doesn't rain every day," he said.

The third stop of the day was at Prairie Garden Farm, owned by Don and Loretta Craig. A long driveway leading to their home skirted a fenced field dotted with chickens. In the center of the field stood a large chicken tractor.

The Craigs, both West Point graduates and retired military veterans, were working in the private sector when the stock market crashed. After Don accepted a job offer in Basehor, they began looking for a suitable place to live. For them, the metropolitan area held no allure, nor did its clusters of subdivisions. "I knew I wouldn't do well living in a subdivision because I wasn't interested in spraying my dandelions," Loretta said.

Becoming homesteaders wasn't intentional, but an evolution triggered by a visit to a World War I museum. There, hanging on the wall, was an old poster depicting a woman scattering seeds through a plowed field, her flowing dress patterned with Stars and Stripes. "Sow the seeds of Victory!" the banner proclaimed. "Plant & raise your own vegetables."

It was, Loretta said, something of an epiphany.

"I was already disillusioned by the financial crash and by how the corporate system failed us," she said, "so when I saw that poster about how the U.S. government was trying to empower the average citizen to be self-sufficient, to be responsible for themselves, to be reciprocal to their community, I was like, this is life-changing."

So life-changing, in fact, that Loretta's immersion into Victory Gardens has made her something of an expert. She now offers presentations to groups and organizations who wish to know more or to incorporate them into their own lifestyles.

Victory Gardens were critical on the home front during the two world wars, she said, and their importance hasn't diminished

over the years. They were also more encompassing than their patriotic title suggested.

"Our gardens are a little bit of everything," she said. Vegetables were only a part of the equation. Meat was a secondary consideration, and while the couple debated adding either sheep or cattle, they ended up with cattle and a sheep dog, followed in short order by chickens.

Don had some experience on his grandfather's farm in upstate New York, and he knew how to drive a tractor, but that was the extent of their farming knowledge. The learning curve was both exhilarating and frustrating. "It's been like drinking water from a fire hose these past six years," Loretta said. "We've done things wrong, but we're learning."

"Anything worth doing is worth doing wrong the first time," Don quipped.

This year, the Craigs

were awarded a grant through the Farmer Veteran Fellowship Fund which will go toward a U-pick blackberry operation.

"We're still as passionate about it as we were six years ago," Loretta said. "We couldn't afford to do it without Don's salary, and we still have to prove that it's sustainable. But one thing we do now is sit down in the winter to a lot of meals where everything was raised by ourselves. And that is an empowering feeling."

The Summer Fun Farm Tour Series was made possible through funding from Farm Aid and a Frontier Farm Credit sponsorship. Tour partners include Kansas Farmers Union, Farmer Veteran Coalition of Kansas, Kansas Beginning Farmers Coalition, Kansas Center for Sustainable Agriculture and Alternative Crops, and Kansas AgrAbility.



JaelAnn Hoover exhibited both the grand and reserve champion breeding doe at the Clay County Fair. She is pictured with judge Samantha Trehal.

LAND AUCTION

SATURDAY, OCTOBER 15 — 10:00 AM
Linn American Legion, LINN, KS

83.9 ACRES± WASHINGTON COUNTY KANSAS LAND

Tract has approximately 59.7 acres in crop production and approximately 24.2 acres in pasture. A high percentage of the pasture could be converted to cropland.

**SELLER: DENNY TRUMBLE REV. TRUST
& JAN RADLEY**

See upcoming Grass & Grain for complete information or go to
www.MidwestLandandHome.com

**Midwest Land
and Home**

Mark Uhlik — Broker/Auctioneer - 785-325-2740

Jeff Dankenbring — Broker - 785-562-8386

www.MidwestLandandHome.com

When you want the Best, Call Midwest!



HOLLAND INDUSTRIES LLC.

Holland Industries, LLC
1121 Eden Rd. Abilene, KS
785-479-2396
hollandindllc@gmail.com
www.hollandindustriesllc.com

- Skid Steer Attachments
- Steel Buildings
- Steel/Aluminum Fabrication
- Redneck Blinds & Accessories



AUCTION

SUNDAY, SEPTEMBER 25 — 1:30 PM
1844 Road E, Emporia, Ks. From Emporia, West on Highway 50 about 2 miles to Road E, (there is a Mobile Home Park) and North 1 1/2 mile to auction site.
I am selling my home and moving.


TRACTOR, UTILITY VEHICLE, EQUIPMENT, LAWN, GARDEN, & MISC., GUN SAFE, SHOP EQUIPMENT, TRAILERS, HOUSEHOLD & MORE!

TERRY LIVINGSTON, SELLER

See last week's Grass & Grain for listings & go to:
www.hancockauctionandrealestate.com



HANCOCK AUCTION & REAL ESTATE
620.340.5692



BLACK HEREFORDS

25th Annual
PRODUCTION SALE
OCTOBER 8, 2016

Saturday • 12:30pm • At the ranch, Leavenworth, Kansas

SELLING
227 HEAD

10 Black Hereford Herd bulls
40 Registered Black Hereford Females
75 Top-Cut heifers from Hughes Angus Ranch in Fowler, Colorado bred to easy calving Black Hereford bulls
100 Certified Sunflower Supreme 2nd calf Bred Heifers
2 Registered Quarter Horses (Riders with Rope Experience)

WITH
COLOR YOU CAN COUNT ON


The Birthplace of Black Hereford Cattle
Video and sale information available on our website: www.blackhereford.com
913-727-6446



Kelly Martin drove the grand champion market hog at the Clay County Fair, selected by judge Hyatt Frobose.

VERBIE ROBINSON ESTATE GUN AUCTION
SATURDAY, SEPTEMBER 24 — 10:00 AM
 Event Center, 16 Main (half block West of Casey's)
SABETHA, KANSAS
 Please make your own inspections. Open for viewing, Friday, Sept. 23 from 1-6 PM. No buyers premiums or sales tax.
 See Sept. 6 Grass & Grain for listings or go to www.hartterauction.com with Gun Catalog
AMMO * BRASS * CLIPS * RELOADING * RELOADING DIES
*** RIFLES w/Scopes * RIFLES no Scopes * PISTOLS**
*** REVOLVERS * SHOTGUNS * MISCELLANEOUS**
VERBIE ROBINSON ESTATE
 AUCTION CONDUCTED BY
HARTTER AUCTION SERVICE
 Sabetha, Kansas • 785-284-2590 or 284-2643
 Auctioneers: ROGER HARTTER, TODD ROKEY, JED HARTTER

GUN AUCTION
SATURDAY, SEPTEMBER 24 — 10:00 AM
 620 Fairview Ave. — NEWTON, KANSAS
 30 Year Collection!
 Preview: Friday, 4-7 PM or Sat 7:30 AM
 Above average quality collection; 140 Weapons!
 Check web or call Vern for list!

Browning 221 Rifle; Winchester 94, 45Cal; Marlin 336 30-30; Remington Nylon 66; Marlin 39A 22Cal; Beretta 303 12Ga; Weatherby 12Ga; Wingmaster 870, 12Ga; Riverside Arms 12Ga; Ithaca 37 Featherlite; Stevens Arms 520; Ruger 10 22 Carbine; Luigi French 12Ga; Mauser 7mm; Glen Field 778, 12Ga; Navy Arms 12Ga; Mossberg 500A 12Ga; Enfield 410 Short; Military British Enfield Mark 4; Military-Car Done; Gauche IGA 12Ga O/U; HG Sterling DB 12Ga; Mosin-Nagant 7.62 mm; JP Wilkinson DB 12Ga; AJ Aubrey D30 12Ga; Argonaut 900K O/U 12Ga; Meacham Twist DB 12Ga; JC Higgins 583 16Ga; US Springfield 1878 Trap Door; Military Mauser Model O; Us Springfield 1884; Mauser 88mm German dated 1890; Herter's 44 Cal W. Germany; Dan Wesson Arms 44 Mag; Iver Johnson 38Cal; Muzzle Loader 36 Cal Sheriff's Model; Ruger Blackhawk New 357 Mag; H & R 949 22Cal; Ruger SS 22Cal; Colt Police Special 32-20Cal; Strum Ruger P85 9mm; Ruger Single 6 22 Cal; Derringer Excav; H & R Arms 929; Walther P38 9mm; Smith & Wesson 38 Special; Walther 9mm; Webley Mark VI; Smith & Wesson US 1917; Raven MP25 25Auto; ARMI Tamfoglio Nickel & Blue MGT 27 25Auto; Phoenix Arms MP 22A 22Cal; Ruger Super Blackhawk 44 Mag NIB; Llama 45Cal; S & W 19 357Mag; FJM Derringer DD; Ruger Bearcat 22Cal; Glock 45 Auto; FFE G M SMC 380 Hungary; Ruger Super Single 6 22Mag; Ruger 30 Cal Carbine; Browning Buck Mark 22Cal; Bayonets

Auction Specialists, LLC
 Newton, Kansas
www.auctionspecialists.com
 VERN KOCH, 316.772.6318
 MIKE FLAVIN 283.8164

Veterinary Feed Directive and BQA meeting set for Oswego September 26

Beginning January 1, 2017 livestock producers are required to obtain a Veterinary Feed Directive from their veterinarian to feed antibiotics deemed as medically important to their livestock. Aureomycin, an antibiotic widely used for the prevention of anaplas-

mosis in cattle, is an example of one of the many antibiotics that will require a feed directive under these adopted guidelines. To help producers comply with the new Veterinary Feed Directives, Kansas State Research and Extension will be hosting a Veterinary

Feed Directive and BQA Meeting on Monday, September 26 beginning at 6:30 p.m. This meeting will be held at the Oswego Community Center located at 203 North Street.

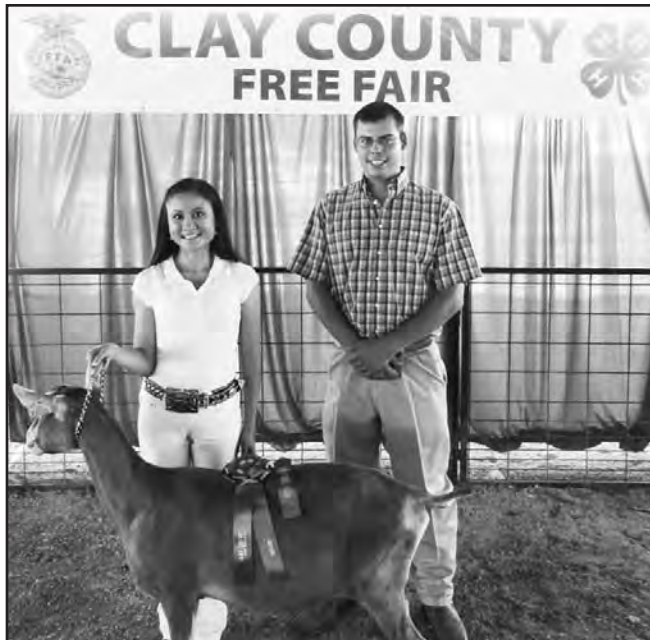
Dr. Gregg Hanzlicek, Director of the KSU Veterinary Medicine Production Animal Field Investigations, will explain how the implementation of Veterinary Feed Directives will work and the steps beef producers must take to follow these guidelines.

In addition Dr. A.J. Tarpo, KSU Extension Veterinarian, will lead a discussion on beef cattle care that will enable participants to become certified under Beef

Quality Assurance Guidelines.

For more information about this meeting or to pre-register please contact the Wildcat Extension Office at 620-784-5337 or the Cherokee County Extension Office at 620-429-3849.

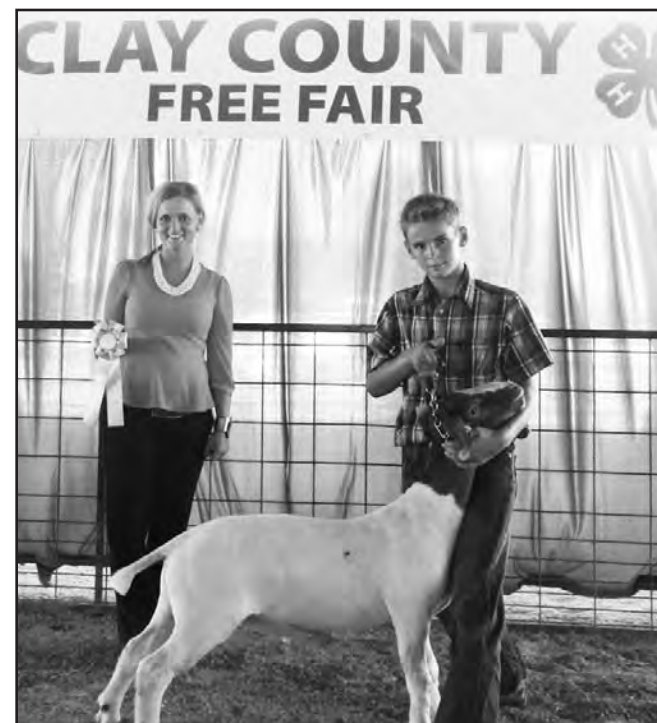
Kansas State University is committed to making its services, activities and programs accessible to all participants. If you have special requirements due to a physical, vision, or hearing disability, contact Dale Helwig, Cherokee County Extension, 124 W. Country Rd, Columbus, KS 66725, phone 620-429-3849 or email dhelwig@ksu.edu



JaelAnn Hoover led the grand and reserve champion dairy goat at the Clay County Fair. Coffman Liggett judged the event.

THE LATEST FARMING INFORMATION IS IN
GRASS & GRAIN
 Published by AG PRESS
 CALL (785) 539-7558

IRRIGATED LAND AUCTION
WEDNESDAY, OCTOBER 12 — 6:00 PM
 Held At The Union Pacific Depot
 120 Fort Riley Blvd. — MANHATTAN, KS
 140 acres +/- SW ¼ Sec. 17, Township 10, Range 9 Riley County Kansas, Zeandale Township
 Property consists of 4 wells with water rights property also includes Valley Center pivot. Currently planted to Alfalfa and sorghum
 Buyer to pay 5% down day of auction with balance due on or before closing on or before November 18th. Possession upon completion 2016 Fall Harvest.
 Statements Made Day of Auction takes Precedence over previous printed materials
 To view property or other additional information contact
 Jeff Ruckert 785-565-8293
 Jeff Ruckert, Auctioneer/Broker
 Manhattan, KS 66502
 785-565-8293
jctt.97@gmail.com
www.RuckertAuctions.com



The reserve champion market meat goat at the Clay County Fair was shown by Brett Loader. He is pictured with judge Samantha Trehall.

GRASS & GRAIN
 Subscribe ONLINE at:
grassandgrain.com

LAND AUCTION
TUESDAY, OCTOBER 18 — 6:00 PM
 American Legion Cabin, North Hwy. 99 — FRANKFORT, KS
237.08 ACRES± - MARSHALL COUNTY KANSAS LAND
 This property is located just a little over 2 miles from Frankfort. The combination of excellent soil types, easy access, and close proximity to the new railroad facility in Frankfort make this an excellent property to own!
JONES/STEWART FARM — SELLERS
 See upcoming Grass & Grain for complete information or go to www.MidwestLandandHome.com
Midwest Land and Home
 Jeff Dankenbring — Listing Broker 785-562-8386
 Mark Uhlik — Broker/Auctioneer 785-325-2740
www.MidwestLandandHome.com
 When you want the Best, Call Midwest!

LAND AUCTION
SATURDAY, OCTOBER 1 — 10:00 AM
160 ACRES REPUBLIC COUNTY LAND
 Held at the Munden Community Hall in MUNDEN, KANSAS
 160 Acres (more or less), has 141.99 acres of gently sloping upland terraced cropland, 15.02 acres waterways, and 2.99 acres of roads. Cropland lays very good and is on a county blacktop road.
Farm Location: at Lincoln and 220th Rd. or 4 miles south of Munden, Kansas.
Legal: (SW ¼) of Section 22, Township 2 South, Range 2 West of the 6th P.M. in Republic County, Kansas.
Terms: 10% down day of sale balance upon marketable title at closing on or before November 17, 2016. **Taxes:** Sellers pay 2016 taxes of \$2,269.63. **Possession:** Buyers receive possession of the crop ground and waterways after fall harvest. **Escrow Agent:** William Navis Attorney, Belleville, Ks. Title insurance & escrow fee costs split equally. Real Estate Broker represents Sellers; All acreage and information are taken from reliable sources but are not guaranteed by the sellers or Auctioneer. Statements made day of sale take precedence over printed material. **Not Responsible for Accidents.**
GAYLE H. MOSS ESTATE
 Charles L. Moss & Linda G. Elliott Co-Executors
ROGER NOVAK REAL ESTATE
 Belleville, Kansas
 785-527-2626 Office or 785-527-1302 Cell
 Auctioneer & Real Estate Broker
 Website: www.nckcn.com/novakbrosbieberauction/

FARM TUFF
 New, Remanufactured and Recycled
Ag Replacement Parts
AbileneMachine
 Ag Replacement Parts
CORNHEAD PARTS
 Is Your Cornhead Ready for Harvest?
 Toll Free: 800-255-0337 • www.AbileneMachine.com • See Us on Facebook

American Soybean Association to offer scholarship

The American Soybean Association (ASA) wants to give a scholarship to a high school senior interested in pursuing agriculture.

The Soy Scholarship is a \$5,000 one-time award presented to a high school senior who plans to pursue agriculture as an area of study at any accredited college or university in the 2017-18 academic year. The scholarship is managed by ASA and made possible through a grant by BASF Corporation. High school seniors may apply online

through Nov. 21, 2016.

"ASA is thankful to once again partner with BASF and offer this opportunity to an exceptional student pursuing a career in ag," said ASA president Richard Wilkins, Greenwood, Del. "It's important to encourage young people who are interested in agriculture and provide them with tools to help them succeed."

ASA and BASF have rewarded students for their hard work and interest in agriculture since 2008.

Laura Thompson, ASA's

first Soy Scholarship recipient, now works as cropping systems and agriculture technologies Extension educator for the Nebraska Extension. She said the scholarship helped her on the path to her career in agriculture.

"Receiving the SOY scholarship allowed me to focus on my studies and take advantage of opportunities, such as extracurricular activities, rather than having to worry about finances. Being able to attending the Commodity Classic was an

added benefit," Thompson said. "At the Commodity Classic I was exposed to many different aspects of agriculture and met many interesting people - this really broadened my horizons and enriched my understanding of agriculture."

The scholarship is presented in \$2,500 increments per semester. The student must be a child or grandchild of a current state affiliate and ASA member, maintain successful academic progress and be in good standing with the col-

lege or university to receive the full amount of the scholarship.

Final selection will be made the first week of December during the ASA Board meeting. The student will be notified prior to an official announcement made during Commodity Classic in San Antonio, Texas the week of March 2-4, 2017.

"BASF, like ASA, is excited to support and help prepare the next generation of

agriculture professionals," said Neil Bentley, director of marketing, US Crop, BASF. "This scholarship program is a way to reward students interested in our industry and excel in their studies."

BASF sponsors the winner and one parent or guardian to attend Commodity Classic to participate and receive special recognition at their booth on Thursday and the ASA Awards Banquet on Friday.

KJLS entries set record for second consecutive year

The 84th annual Kansas Junior Livestock Show (KJLS), proudly sponsored by Cargill, again will set a record for entries, with 798 youth from 90 counties entering 2,063 animals. This is the largest number of livestock entered in more than 25 years, increasing by 200 head over last year's record numbers. The total includes 141 market steers, 329 breeding heifers, 293 market hogs, 278 breeding gilts, 326 market lambs, 298 breeding ewes, 240 meat goats and 158 commercial doe kids. The statewide event will be held September 30 to October 2 at the Kansas State Fairgrounds in Hutchinson.

For the third consecutive year, Douglas County leads the state with the most exhibitors, 41, and the largest number of total livestock entries, 110. Youth from Douglas County also have entered the most market hogs, 16; breeding gilts, 16; market lambs, 21; and breeding ewes, 22. Coffey County has entered the most steers at 12. The largest number of heifers, 26, was entered by Pottawatomie County. Bourbon County competitors have entered the most meat goats, 14. Butler County has the most commercial doe kid entries at 15.

KJLS will award cash for the top five in both market and breeding shows in all four species. Direct cash payouts will range from \$4,000 to \$500 for steers; \$1,000 to \$300 for heifers; \$2,000 to \$500 for market hogs; \$750 to \$250 for breeding gilts; \$2,000 to \$400 for lambs and market goats; and \$750 to \$200 for ewes and commercial doe kids.

Immediately following Saturday evening's exhibitor barbecue, sponsored by Merck Animal Health, KJLS will present scholarships to exhibitors who have excelled academically, in community service and in 4-H/FFA. This is the 24th year for the scholarship program, which has awarded a total of \$390,500 to 294 exhibitors since 1993. Last year, a total of \$21,800 was awarded to 13 exhibitors.

"The responsibility of preparing for and showing at this event provides a great learning experience for Kansas youth," said KJLS president Dale Latham of Yates Center. "We are glad we can reward some of these hard-working young people through scholarships."

Separate from the selection of species champions, a showmanship contest will be held. The top showman in both junior and senior divisions of each species will receive a silver belt buckle. Prizes also will be awarded for second through fifth place in each division.

New this year, KJLS will be offering the LEAD Challenge, which is an educational and advocacy event that provides an opportunity for exhibitors to learn about current industry issues. Exhibitors in the senior division will compete in showmanship, go through an interview process and take a written examination. Juniors will compete in showmanship and be interviewed. There are 59 seniors and 92 juniors entered in this year's challenge.

The Kansas Livestock Foundation (KLF) again will sponsor a club calf

show and sale during KJLS. Steer and heifer prospects from some of the top club calf producers in the Midwest will be consigned. The event will take place October 1. Sale commission proceeds will go toward KLF Youth in Agriculture scholarships.

The Mid-America Classic Collegiate Livestock Judging Contest also will be held October 1 in conjunction with KJLS. This event, which has been held for more than 30 years, provides competitors the opportunity to sharpen their livestock evaluation skills, develop their critical think-

ing and decision-making abilities and refine their public speaking skills.

The Kansas Livestock Association, Kansas State University and the Agri-Business Council of Wichita serve as major show sponsors. In addition to Cargill and Merck, other sponsors include Seaboard Foods, Ag Choice/MFA, Kansas Farm Bureau and Farm Bureau Financial Services, Friends of KJLS, Elanco Animal Health, Syngenta and the Kansas Department of Agriculture. Hundreds of volunteers from across the state also help organize and put on the show.



CONTACT
AG PRESS
Commercial Printing

FOR
Catalogs • Sale Flyers • Magazines
Newspapers • Calendars • Brochures • Books

Ask for Sandra
1531 Yuma • Manhattan, KS 66502
785-539-7558

CHASE COUNTY • MIDDLE CREEK VALLEY
118.5 ACRES FLINT HILLS COLLETT CREEK
AUCTION

THURSDAY, OCTOBER 6 — 7:00 PM
AUCTION LOCATION: Community Building, Swope Park,
COTTONWOOD FALLS, KANSAS

Property of
WILLIAM LAMEY & the late DONNA STARKS LAMEY

PROPERTY ADDRESS: 822 Middle Creek Rd. Elmdale, Ks.
PROPERTY LOCATION: From Elmdale Ks and Hwy 50, the property is 4 miles west, northwest on the paved Middle Creek Rd. The property is on the North side of the county road.

See full details & photos at
www.GriffinRealEstateAuction.com

RICK GRIFFIN
Broker/Auctioneer
Cell: 620-343-0473

CHUCK MAGGARD
Sales/Auctioneer
Cell: 620-794-8824

Griffin Real Estate & Auction Service LC

305 Broadway
Cottonwood Falls, KS 66845
Phone: 620-273-6421 • Fax: 620-273-6425
Toll Free: 1-866-273-6421
In Office: Nancy Griffin, Heidi Maggard
Email: griffin123r@gmail.com
www.GriffinRealEstateAuction.com

LAND AUCTION
THURSDAY, OCTOBER 6 — 6:00 PM
Bird City American Legion Hall
BIRD CITY, KS

351.23 ACRES - CHEYENNE COUNTY KANSAS LAND
TRACT 1: 77.99 Acres M/L. 100% of this tract in crop production.
TRACT 2: 79 Acres M/L. Tract is 100% in crop production.
TRACT 3: 80 Acres M/L. Tract is 100% in crop production.
TRACT 4: 38 Acres M/L. Tract is 100% in crop production.
TRACT 5: 76 Acres M/L. Tract is 100% in crop production.
TRACT 6: Tracts 2, 3, 4, 5 combined.

DIANE E. MALLECK - SELLER
Midwest Land and Home is acting as a Seller's Agent and represents the seller interest.

See Sept. 13 Grass & Grain for complete information or go to
www.MidwestLandandHome.com



Midwest Land and Home
Jeff Dankenbring - Broker - 785-562-8386
Mark Uhlik - Broker/Auctioneer - 785-325-2740
www.MidwestLandandHome.com
When you want the Best, Call Midwest!

AUCTION
SATURDAY, SEPTEMBER 24 — 10:00 AM
Offering for sale at Public Auction, located at 912 N. Glendale,
NEWTON, KANSAS

FURNITURE, COLLECTIBLE, HOUSEHOLD & GARAGE
6 pc. bedroom set; 4 pc. bedroom set; Walnut chest & end table; Cedar chests; hall tree; old GE radio; trunk; sofa; loveseat; dining table & chairs; china hutch; recliner; chairs; desks; shelving; stereo; floor lamps; end tables; Hull; Roseville; Haeger; books; records; college plate collection; china sets; cookie jar; flatware; car banks; Silver tea sets; Candlewick; glassware; Fenton & Viking glass; quilts; fabric; fancy work; dolls; cups & saucers; figurines; mini tea sets; dogs; toys; postcards; rugs; Santa Fe dining car plate; Newton souvenir cup; Harvey Co. tray; Waldo Brandt Newton, KS print; Santa Fe signed picture by Douglas Trowbridge; Bethel College centennial buckle; 100th Newton Railer statue; 100th Newton High buckle; Newton High School memorabilia; Central College yearbooks; 1979-1990 Newton City directories; City plat maps; old calendars; luggage; radios; jewelry; old purses; vintage shoes; salt & pepper collection; aprons; handker-

chiefs; dresser set; cast iron; enamelware; crocks; ice cream freezer; horse shoes; butter churn; signs; lg. speakers; old telephones; hub caps; letter graph; oil lamp; wooden cabinet; Pepsi thermometer; floor grate; marble slabs; enamel top table; 2 old Coca-Cola coolers; shaving mirror & stand; clown oil lamp; binoculars; German books; Blue Willow; microscope; 1974-1990 Hesston belt buckles; numerous buckles; metronome; Richardson Scale Co. Wichita safe & combination; old cameras; Pentax camera; Argus camera & equip.; Corning Ware; Pyrex; Tupperware; kitchen items; upright freezer; washer & dryer; office supplies; music books; law & medical books; Christmas items; glassware; sewing machine; horse collar mirror; deer mount; train set; Jim Beam bottles; old games; cookbooks; microphone stands & speakers; Bell & Howell equip.; amplifier; shop vac; fans; motors; ladders; sprinkle can; tubs; yard tools; hand tools; 2 wheel trailer; fishing supplies; turn tables; & much more.

NAOMI UNRUH ESTATE
MARGARET UNRUH DAVIS, SELLER
TERMS: Cash day of sale. Statements made day of sale take precedence over advertised statements.

VAN SCHMIDT • Auctioneer/Real Estate
7833 N. Spencer Road, Newton, KS 67114
620-367-3800 or 620-367-2331
Schmidt Clerks & Cashiers • Lunch provided by K & B Catering
www.hillsborofreepress.com

LAND AUCTION
WEDNESDAY, OCTOBER 5 — 6:00 PM
LaQuinta Inns & Suites, 2400 W Wyatt Earp Blvd
DODGE CITY, KS

303.1 ACRES - FORD COUNTY KANSAS LAND
TRACT 1: 156 Acres M/L. Accessible by 103 Rd and Warrior Rd. Primarily Harney Silt Loam soil types. This soil type is considered prime farmland. This Tract is almost 100% in crop production.
Legal: S21, T28, R26, ACRES 156, SE4; LESS ROW

TRACT 2 : 147.1 ACRES M/L. Just east of Hwy 400 & West of 107 Rd. This tract consists primarily of Lesho-Lesho, saline clay loams, and Las Animas-Lincoln complex soil which are great for crop production. Approximately 80.5 Acres are enrolled in CRP with a 2021 expiration date. 99% of this tract could be in crop production.
Legal: S31, T26, R25, ACRES 147.1, GLO LT 1; NW4 NE4; S2 NE4; LESS ROW OF RECORD; SW BYPASS.

LAND LOCATION
Tract 1: Take Hwy 283 south out of Dodge City 9 miles. Turn west onto Warrior Rd and go 8 miles. Property is located on the NW corner of the Warrior & 103 Rd intersection. **Tract 2:** Take W Wyatt Earp Blvd/Hwy 50 west out of Dodge City approx. 2.5 miles to Hwy 400. Turn south .75 mile, the NW corner of the property will be on the east side of Hwy 400.

2015 Ford Co Taxes:
Tract 1 - \$1009.98; Tract 2 \$400.36

Mineral Rights: Owner's interest in mineral rights will transfer with the sale of the property.

Possession: Buyer to receive access immediately upon signing the purchase contract and receipt of earnest money. Full possession on closing.

HEIRS OF LARRY HANDSHY SR - SELLERS
Agent's Notes: Tract 1 is an exceptionally good tract with great soils and productivity. This tract is ready for crop production. Tract 2 is close to Dodge City and would make a great place to build a home or business.

Terms & Possession: 10% down day of the sale, balance due at closing on or before December 9, 2016. Seller to pay 2016 taxes. Title insurance, escrow and closing costs to be split equally between buyer and seller. Possession on closing. This property to be sold as-is. All inspections should be made prior to the day of the sale. This is a cash sale and will not be subject to financing, have your financing arrangements made prior to sale day. Midwest Land and Home is acting as a Seller's Agent and represents the seller interest. All information has come from reliable sources; potential bidders are encouraged to verify all information independently. First American Title Ins Co of Dodge City will act as escrow & closing agent. Announcements made the day of sale will take precedence over all other information.



Midwest Land and Home
Mark Uhlik - Broker/Auctioneer 785-325-2740
www.MidwestLandandHome.com
When you want the Best, Call Midwest!

AUCTION
WEDNESDAY, SEPTEMBER 28 — 4:00 PM
Offering for sale at Public Auction, located at 400 Grandview
(Army Nat'l Guard), NEWTON, KS

PIPE ORGAN, FURNITURE, COLLECTIBLES & VEHICLE
Conn pipe organ, nice; dining room table, 8 chairs, matching china hutch; 4 pc. bedroom set; 3 pc. bedroom set; sm. curved glass china hutch; chest-of-drawers; sm. church pew; sm. desk; end tables; show case end table; wooden rocking chair; recliners; sofa; old cupboard; mirrored back glass shelving; wooden shelf; piano/organ; TV; record player; dressers & mirrors; beds; 5 drawer cabinet; Frigidaire freezer; washer & dryer; buffet; dining table; pictures; sewing machine; trunks; tea cart; office chairs; loveseat; lg. Teddy bear collection; Schuco Tricky Teddy Bear; very large clown collection including: Heritage Mint 16" porcelain clowns; large collection of Yesterdays' Child figurines; Kewpie doll bank; Amber glassware; pop-up book collection; 100's windup toys; honey pot collection; Fisher-Price; dolls; doll furniture; milk glass; Circle of Friends by Masterpiece; Danbury Mint dolls; ceramic angels; Christmas items; sewing supplies; Garfield collection; books; Community flatware; serving bowls; china; birdhouses; bells; games; Remington Rand typewriter; metal shelving; GE dehumidifier; plate collection; chickens; cookie jar; Ringling Bros. & Barnum Bailey Circus books; sm. kitchen appliances; Corelle; Pyrex; wicker mirror; quilt stand; pictures; badminton set; yard ornaments; gardening; toaster oven; Tupperware; utensils; bedding; old phone; fan; gas lamp; reel mower; 1991 Chev. Cavalier car; & more.

EVELYN FREY ESTATE, SELLER
MILDRED UNRUH ESTATE, SELLER
TERMS: Cash day of sale. Statements made day of sale take precedence over advertised statements.

VAN SCHMIDT • Auctioneer/Real Estate
7833 N. Spencer Road, Newton, KS 67114
620-367-3800 or 620-367-2331
Schmidt Clerks & Cashiers • Food Provided by K&B Catering
www.hillsborofreepress.com

Auction Calendar

September 21 — Tractor, payloader, trucks, trailers, farm equipment, campers, ATV, harvesting near Horace, KS for Grubb & Sons, Inc. Auctioneers: Berning Auction.

September 22 — Pickup, Furniture, Jewelry, Household appliances, Tools, & lots of Misc in Manhattan, KS for Wayne Geyer Estate. Auctioneers: Gannon Real Estate & Auctions.

September 24 — Antiques, appliances, furniture, railroad collectibles, shop items at Strong City for property of David & Zetta Ramsey. Auctioneers: Griffin Real Estate & Auction Service, LC.

September 24 — Tractors, loaders, guns, cars, trucks, combine, heads, trailers, truck beds, livestock, construction, misc., UTV & ATVs, lawn, garden, equipment & more at Effingham for consignments. Auctioneers: Hoffman Auction Service.

September 24 — Household goods, power tools, related tools, boat motor, lawn, garden, collectibles & misc. at Beatrice, Nebraska for John & Jonelle Rus-

sell. Auctioneers: Jurgens, Henrichs, Hardin.

September 24 — Household, collectibles, glassware, tools & yard items at Junction City for Bill & Nadine Edie. Auctioneers: Chamberlin Auction Service.

September 24 — Furniture, collectibles, household & garage at Newton for Naomi Unruh Estate, Margaret Unruh Davis seller. Auctioneers: Van Schmidt Auctions.

September 24 — Trucks, camper, ATV, equipment, hot tub, electric wheelchair, Winchester firearms safe, collectibles, household & misc. at Lawrence for Mrs. (Kenneth) Cathy Wyrick. Auctioneers: Elston Auctions.

September 24 — Guns, ammo, brass, clips, reloading, reloading dies, rifles, pistols, revolvers, shotguns & more at Sabetha for Verbie Robinson Estate. Auctioneers: Hartter Auction Service.

September 24 — Guns at Newton. Auctioneers: Auction Specialists, LLC.

September 24 — Lots of collectibles of all kinds at Kanopolis for Wayne Shively Estate. Auctioneers: Os-

walt Auction Service.

September 24 — Household, miscellaneous antiques & collectibles & vehicles at Abilene for Genevieve Laws. Auctioneers: Shivers Auction Co.

September 24 — (Day 2 of 2) antique cars, large Coke sign, old Abilene wrought iron jailhouse door, huge variety of antiques, primitives, old machinery, vehicle parts & other collectibles at Abilene for the Lawrence Shetter Trust. Auctioneers: Kretz & Bloom Auction Service.

September 24 — Farm equipment, tools, machinery, cattle equipment, etc., collectibles at the North edge of Soldier for Warren & Elsie Hamilton. Auctioneers: Dan Deters Auction Co.

September 24 — Consignments at Salina with merchandise from Kansas Dept. of Wildlife, Parks & Tourism. Auctioneers: Wilson Realty & Auction Service.

September 24 — Nice older home, vehicles, trailers, shop tools, furniture, guns & ammo, license plate collection. Living estate of Marvin O'Neil. Auction-

eers: Chuck Korte Real Estate & Auction Service.

September 24 — Tools, 4-Wheeler, Household, Lawn & Garden for Ralph C. Plegge Estate. Auctioneers: Olmsted Real Estate.

September 24 — 2006 Lincoln Town Car, Zero Turn Mower, Appliances, Furniture, Collectibles, Lawn Items in Wamego, KS for Don & Glenda Peterson Estate. Auctioneers: Gannon Real Estate & Auctions.

September 27 — Individual collection of guns & coins at Jewell. Auctioneers: Thummel Real Estate & Auction.

September 28 — Pipe organ, furniture, collectibles, vehicle at Newton for Evelyn Frey Estate and Mildred Unruh Estate. Auctioneers: Van Schmidt.

October 1 — Vehicles, automotive parts, tools & misc. near Randolph for Mark & Lisa Gudenkauf. Auctioneers: Kretz & Bloom Auction Service.

October 1 — Household & collectibles at Marysville for Norman Grauer. Auctioneers: Olmsted & Sandstrom.

October 1 — 160 acres m/l Republic County land held at Munden for Gayle H. Moss Estate. Auctioneers: Roger Novak Real Estate.

October 1 — Tools & equipment, farm equipment, irrigation pipe at Salina for The family of the late Jack & El Dooley. Auctioneers: Post Rock Auction.

October 1 — Equipment consignment (tractors, combines, trucks, trailers, implements, livestock & construction equip. & more) at Leonardville. Auctioneers: Gene Francis & Associates.

October 1 — Vehicles, 4-wheeler, trailers, guns, Hunting & fishing items, taxidermy, tools, lawn, & garden, Photography, Antiques, collectibles, household & misc. items for the late Ken Bryant in Elmdale, KS. Auctioneers: Griffin Real Estate & Auction Service.

October 1 — Tractors & loaders, trucks, pickups, & cars, vehicle accessories, trailers, shop equip., ATV, hay/ hay equip., skid loader & attachments, combines & heads, lawn & garden, machinery & equipment, tires, Misc. items, hedge posts, fencing, livestock equip., construction equip., and property of the late Marvin Bengston in Holton, KS. Auctioneers: Harris Auction Service.

October 1 & 2 — (Oct. 1 Trucks, tractors, equipment, firearms, tools & misc; Oct. 2: Collectibles, household & misc.) at Lawrence for Jim DeHoff. Auctioneers: Elston Auctions.

October 2 — Vehicles, equipment, instruments, firearms, toys, books, postcards, collectibles, crocks, furniture at Clay Center for Eugene Carlson & Estate of Delbert Buss. Auctioneers: Reynolds Auction Service.

tioneers: Reynolds Auction Service.

October 2 — Tractor, mowers, Antique, tools, Bugatti kit car, household, salvage in Lyndon, KS. Property of the late Jeff Wiese. Auctioneers: Wischropp Auctions.

October 4 — 390 +/- acres all in Geary County, in Junction City, KS for Lawrence R. Young. Auctioneers: Brown Real Estate & Auction Service.

October 5 — 303.1 acres m/l Ford County, KS land held at Dodge City for heirs of Larry Handshy Sr. Auctioneers: Midwest Land & Home.

October 6 — 118.5 acres m/l of Chase County Middle Creek Valley land held at Cottonwood Falls for property of William Lamey & the late Donna Starks Lamey. Auctioneers: Griffin Real Estate & Auction Service, LC.

October 6 — 351.23 acres m/l Cheyenne County, KS land held at Bird City for Diane E. Malleck. Auctioneers: Midwest Land & Home.

October 8 — Estate auction at Hanover for Jerry I. Pillard Estate. Auctioneers: Olmsted & Sandstrom.

October 8 — Black Herefords Production Sale, J&N Ranch, Leavenworth, KS.

October 8 — Primitives, old toys, Santa Fe, antiques, Boy Scout, collectibles. Property of the late Leon & JoAnn Mannell. Auctioneers: Wischropp Auctions.

AUCTION

SUNDAY, OCTOBER 2, 2016 — 10:30 AM

AUCTION LOCATION: Clay Center National Guard, 227 S. 12th Street — CLAY CENTER, KANSAS



VEHICLES & EQUIPMENT

Sell at 12:30 PM

1953 Ford Golden Jubilee tractor, new tires (runs good); Farmall F12 tractor (runs); Farmall F14 tractor (doesn't run); **Truck:** C65 1974 Chevy 2 ton truck, 16' bed w/power up-power down, power steering, 50% + rubber, 4x2, 27k actual miles, always shedded, excellent condition; 2005 Merc. Sable GS, 130K, V6 runs good.

INSTRUMENTS

Silvagni button accordion; Silco piano accordion; Carmer piano accordion; Cz violin.

FIREARMS Sell at 12:00 Noon

Ted Williams Sears pump 20 ga. w/adj choke; Iver Johnson 12 ga single shot; Stevens .410 single shot; Dixie Gun Work 28 ga muzzle shot gun; Western lead air rifle shot crate; Winchester ammo wood crate; US Army revolver holster (brown); 1950 Daisy BB gun.

TOYS & BOOKS

Original GI Joe doll w/accessories; several 1970's model cars in box; Patton tank model in box; several sets of skates; Alpine Express set by Toy Creations (Germany); 3 wood sleds; Century of Progress 1933 Greyhound bus; GMC truck & trailer; Model Motoring Stirling Moss table top racing set; Bunco card game (good); pets picture puzzles; Wyandotte roadster; child's iron; **BOOKS:** 1933 World Fair North Western booklet; 1933 picture story book; scrapbook with some baseball cards; 1918 2 Clay County Platt books; 4 Clay Center High school autograph books early 1900's; 1902 Cunard Line ship line booklet w/menu & tickets; Topsy Turvy & Tin Clown books (1934); 1947 Ford tractor book.

POSTCARDS

Jack Dempsey; novelty; Clay Center; Halloween; Black; hunting farming; approx. 340 post cards; VALENTINES: pull



down, ornate, some from 1934; AD CARD: Lion Coffee, White Sewing Machine and others; tin type pictures.

COLLECTIBLES

Crocks: 20 GAL Red Wing, 8 gal Western Stoneware, 6 gal Birch leaf, 5 gal Red Wing jug, 5 gal Blue Band Stoneware jug & other crocks and jugs; Fredricktown Ohio 19" cast bell w/cradle; JD drill box ends; JD lister lids; Horse & cow wind vanes; JD bicycle in very good condition; Bake Rite 140 lbs shortening tin; 2 carpenter chests (good); wood bowl, butter mold & others; wood rake, pitch fork & other wood farm hand tools; Mobile, Skelly & other 5 gal oil cans; Pioneer Feed signs; Fairbanks 500 lb platform scales; Cast boiler, Griswold skillet & other cast iron items; Roy Rogers lantern; Harpham Bros. high back saddle; high back saddle w/swastika; bridles, single & dbl. trees; tin ad items; milk glass items; cream & sprinkling cans; 4 lightning rods w/ amber bulbs; Red jacket well pump; wood screen doors; alum. items; garnet items; Dietz lantern & others; Keen Kutter meat grinder & others; Stanley level & others; brass front scales; Linn Implement match holder; Desert water bag (like



new); sports memob; ad tin cooking items; 6 German beer steins & other steins; 2 Lion Stone Whisky cowboy decanters; 1968 Wildcatter Distilling Co. decanter & approx. 40+ Budweiser collectible steins, other decanters; Depression glass blue cookie jar; **Pictures:** 16 1/2 x 14 Black family w/horse: 1911 Bethany College staff & students picture; WWII photo, Squadron 86 at Biltmore Hotel, Santa Ana, CA; 2 Van Art NY girls (1800's); metal & wood items for refurbishing.

FURNITURE

Valley coin op. pool table, 53"x93"; maple 4 poster bed; 2 oak buffets; drop front desk; misc dining chairs; 50's alum kt chairs; 1 waterfall chest of drawers & others; oak sewing rocker; wrought iron vanity w/chest; walnut parlor table; 3 rustic cabinets w/doors; Gold lift recliner.

AUCTIONEERS NOTES: This is only a partial listing as more things are being found. We will be running 2 rings part of the day. There will be a LUNCH STAND!

SELLER:

EUGENE CARLSON & ESTATE of DELBERT BUSS

TERMS & CONDITIONS: Cash or personal check with proper ID. All items must be paid for before removal. Statements made day of auction take precedence over printed material. Not responsible for accidents.

For additional pictures & complete listing go to kansasauctions.net

REYNOLDS AUCTION SERVICE
ABILENE & CLAY CENTER
RANDY REYNOLDS: 785.263.5627
landmanrj@gmail.com

GUN & COIN AUCTION

TUESDAY, SEPTEMBER 27 — 5:00 PM

Auction will be held in the Community Center on the South side of the square in JEWELL, KANSAS

GUNS

(Sells at 5:00 PM)

- 38 special pistol w/2 clips 887--;
- Colt cap & ball pistol;
- S & W 5 shot revolver;
- Japanese revolver missing grips;
- S & W 6 shot revolver;
- 5 shot revolver;
- US Revolver 22;
- JC Higgins 20 ga pump;
- Remington 22 pump s-l-r;
- Remington 22 model 24;
- Western Field 22 semi auto long rifle;
- Winchester model 74 semi auto 22 short;
- Stevens 22 single shot hex barrel;
- Remington s-l-r model 24 rifle 22;
- Stevens single shot 20 ga 2 3/4 chamber;
- Stevens 1894 lever 22;
- Italian Titan 25 cal. pis-

tol; 18. Riverside Arms single shot April 1913.

COINS

Morgan dollars 1883, 1884, 1879, 1888, 1887, 1889, 1900, 1921, 1971 lke dollars; Susan B. dollars; 1879, 2 cent piece; 1905 2 cent piece; 1858 flying eagle cent; 1865 Mercury dime; Littleton Co mint sets; Silver Eagles 2000, 2001, 2002, 1993, 1999, 1987, 1997, 2007; 1854 seated half w/arrows; set buffalo nickels; roll 2005 Kansas nickels; Australian 1991 Kooka Rurra; 1988 Canadian silver maple leaf; Canadian cents; Roosevelt stamp & coin set 1935, 1941, 1943, 1945; coin set 1883, 1913 nickel, 1859, 1909 Indian

penny, 1913, 1938 buffalo nickel; liberty head nickel 1904; Penneys 1858 Flying Eagle, 1848, 1841, 1838, 1856, 1837, 1901, 1959, 1863, 1925, 1890, 1897, 1899, 1905, 1945d, 1943 steel; 1938 d nickel; 1776 Continental currency; 1965, 68, 69 quarters unc; Mercury dimes 1865, 1940d, Barber half; Franklin half; 1859; 2 headed quarter; 1908 Liberty nickel; 1888 nickel; Quarters 1888, 1942, 1962, 1963, 2003; 1862 seated dime; 1854 seated dime, barber dimes, mercury dimes; Copper collection coin; 1963 Mardi Gras token; 1967 Korus; 1960 Mexican Cendovas.

Note: This is an individual collection. We will sell the guns first at 5:00 p.m. followed by coins. Check our web site for pictures at www.thummelauction.com.

Auction Conducted By: THUMMEL REAL ESTATE & AUCTION LLC
785-738-0067

REGISTER TODAY!

tallgrassauctions.com

Introducing something new for our AUCTION COMMUNITY!
Grass & Grain is pleased to announce its sister institution
tallgrassauctions.com

Tallgrass Auctions is a multi-faceted ONLINE AUCTION PLATFORM devised to bring BUYERS and SELLERS together!

★★★ GO TO TALLGRASSAUCTIONS.COM NOW! ★★★
New Auctions Uploaded! Check out UPCOMING AUCTIONS with pictures on our website now!

TO REGISTER

- Go to tallgrassauctions.com
- Click "Register" and complete form.
- After agreeing to terms & conditions, click "Register to Bid".
- A confirmation email will be sent. (please remember to check your junk folder the first time to approve the email)
- Follow the email link and You are Ready to BID & BUY!



If you have any concerns or trouble registering, please call Grass & Grain 785-539-7558 for assistance!

October 8 — Tractor, 4 wheeler, mower, tools & farm, collectibles & household items for Susan & Orlan Anderson in Salina, KS. Auctioneers: Thummel Real Estate & Auction.

October 9 — Guns at Salina. Auctioneers: Wilson Realty & Auction Service.

October 10 — Tractors, Dozer, Pickup trailers, hay, household, tools at Vassar for Bauck Family Trust. Auctioneers: Wischropp Auctions.

October 11 — 800 +/- acres of Ottawa Co. pasture & farmland for Kay Family Farms in Minneapolis. Auctioneers: Unieted Country Real Estate - Crossroads Auction & Realty.

October 12 — Irrigated Riley County land held at Manhattan. Auctioneers: Ruckert Realty & Auction.

October 14 — 1490+ Acres Of Rolling Native Cattle Grazing Pasture of Elk Co. KS ranch in Howard, KS. Auctioneers: Sundgren Auction & Realty.

October 15 — 197 acres m/l NW Pottawatomie County pasture held at Westmoreland for Still Corporation. Auctioneers: Pearl Real Estate & Appraisal Service.

October 15 — Guns at Salina. Auctioneers: Thummel Real Estate & Auction, LLC.

October 15 — Shop tools & equipment, antique tractor & items & misc. at Minneapolis for Art Weis Repair. Auctioneers: Bacon Auction Co.

October 15 — 83.9 acres m/l of Washington County Land held at Linn for Denny Trumble Rev. Trust & Jan Radley. Auctioneers: Midwest Land & Home.

October 15 — Business Liquidation for Custom Hardwoods, personal property & real estate for Jon Nelson & Leon Nelson. Auctioneers: Griffin Real Estate & Auction Service.

October 15 — Tractors, car, trucks & machinery, tools & farm, Collectibles & household items for Steve & Polly Pearce Estate in Wells, KS. Auctioneers: Thummel Real Estate & Auction.

October 16 — Three bedroom home, Car, Antiques, Glass, Furniture, Collectibles at Lyndon for Property of the late Mar-

jorie M. Dlugosh. Auctioneers: Wischropp Auctions. October 17 — Jewell County land held at Republic for Charlotte Walters Estate, James R. Brooks Trust, Anna M. Hoover Trust. Auctioneers: Thummel Real Estate & Auction, LLC.

October 18 — Mitchell & Jewell County land held at Jewell for Beverly Smiley & Paul Hartsel. Auctioneers: Thummel Real Estate & Auction, LLC.

October 18 — 237.08 acres m/l Marshall County land held at Frankfort for Jones/Stewart Farm. Auctioneers: Midwest Land & Home.

October 20 — 79.4 acres m/l Morris County land held at White City for William Baker Revocable Trust. Auctioneers: Midwest Land & Home.

October 21 — Farmland Auction for Charles E. Wendling Trust in Frankfort, KS. Auctioneers: Olmsted.

October 22 — Household goods, tools & misc. at Clay Center for Gail & Cheryl Schooley. Auctioneers: Kretz & Bloom Auction Service.

October 22 — Roseville, Fiesta, Hull, carnival, furniture, dolls & collectibles at Salina. Auctioneers: Thummel Real Estate & Auction, LLC.

October 22 — 252 acres m/l Republic County land held at Munden for Roger & Pam Dean. Auctioneers: Midwest Land & Home.

October 22 — Motorcycles (2005 Harley Davidson Sportster, 1985 Harley Davidson Iron Head Sportster), antiques, collectibles & misc. at Salina. Auctioneers: Baxa Auctions, LLC.

October 26 — Fink Beef Genetics Angus & Charolais Bull Sale at Randolph.

October 29 — Tractor, combine, trucks, farm machinery, primitives & tools at Scranton for Ralph & Linda Ullery. Auctioneers: Wischropp Auctions.

October 29 — 337.1 m/l acres Marshall County land in 3 tracts held at Marysville for Gee Family Trust & Edna M. Gee Trust. Auctioneers: Midwest Land & Home.

November 12 — Moser Ranch 25th SimAngus, Simmental & Angus Bull Sale at the ranch, Wheaton.

Livestock biosecurity to be featured during 3i Show

Growing and raising food to feed a growing world population is an important job and a huge undertaking for all farmers and ranchers. Besides the task of raising a wholesome food product, producers are also responsible for keeping that food supply safe. That task may seem daunting to many.

K-State Research and Extension, the Ford County Extension office, Ford County Emergency Management and the 3i Show have teamed up to offer farmers, ranchers, emergency personnel and the general public the opportunity to learn more about keeping an important part of the food supply, livestock, safe in south-west Kansas.

During the 3i Show, A.J. Tarpo, K-State Extension Beef veterinarian, will present the program "Protecting Livestock from Disease: Basics of Biosecurity" on Friday Oct. 14 at 11 a.m. and again at 4 p.m.

The goal of biosecurity is to protect animal health, Tarpo said. Biosecurity incorporates those management practices aimed at

keeping new diseases off the farm and keeping diseases from spreading from group to group on the farm. Biosecurity is the most effective method of disease control.

Tarpo will share how livestock producers can control disease by controlling animal movement. His program will include biosecurity tips related to all livestock types and operations.

The Extension veterinarian joined the K-State Department of Animal Sciences and Industry as an assistant professor in June. He works closely with the state's Extension program to help improve the health of cow-calf, stocker and feedlot cattle. Previously, he worked as a feedlot veterinarian focusing on herd-based production medicine, disease surveillance, mitigation and federal import and export issues.

The 62nd Annual 3i Show is a free-admission farm show in Dodge City, which showcases hundreds of exhibitors and demonstrations for those in the agri-

culture industry. The show runs Oct. 13, 14 and 15 at the Western State Bank Expo Center, 11333 U.S. Highway 283. Show hours are 9 a.m. to 5 p.m. Oct. 13 and 14, and 9 a.m. to 4 p.m. on Oct. 15.

With more than 1,000 companies participating, the 3i Show provides a face-to-face, hands-on selling environment with information to assist with farm and ranch buying decisions. Agricultural equipment and services are on display each year, including cattle handling equipment, crop protection information, farm machinery and equipment, trucks and truck equipment, pickup trucks and more.

For more information about the Livestock Biosecurity program, contact the Ford County Extension office at 620-227-4542. For more information about the 3i Show, email the Western Kansas Manufacturer's Association at info@3ishow.com or visit www.3ishow.com.

GRASS & GRAIN
Place your Classified Ad
ONLINE at:
grassandgrain.com

TWO-DAY AUCTION

SATURDAY, OCTOBER 1 &

SUNDAY, OCTOBER 2

9:30 AM BOTH DAYS

468 North 1500 Rd., LAWRENCE, KS

From 6th Wakarusa Go West 3 Miles on Hwy 40 to Dg. 442 (Stull Rd.) Turn West 2 miles to 500 Rd. Turn South 1 Mile to 500 Rd. Turn North 1/2 Mile Too Auction! **Watch For Signs!!**

Jim has retired from farming and is moving to town and will sell the following in Two Auctions!!

DAY #1: SATURDAY, OCTOBER 1 — 9:30 AM



TRUCKS, TRACTORS, EQUIPMENT



1974 GMC 6000 V-8 Single-Axle Grain Truck 4/2 sp., 44K, w/hoist 16 ft. steel bed w/48" grain sides (Nice!); 1951 IH L-16 Series Single-Axle Grain Truck w/Diamond T Engine w/14 ft. steel bed & 30" sides; 1969 Ford 250 Ranger Camper Special truck auto trans./engine needs work; John

Deere 3020 Tractor ser#T111R/116604R Gas, 5277 hrs., 8/2 synchro range, single remote, 540/1000 pto, good rubber w/ JD 148 Loader 5 ft. bucket & 5 ft. manure fork bucket; Farmall M single hydraulic ser#FBK 190890 good rubber; John Deere LA115 Riding Lawn Mower 24 hrs (Like New!); Craftsman GT3000 Lawn Tractor 52" deck w/wheel weights; Gleaner Allis Chalmers F Corn/Soybean Special Combine ser#FKS13100 13 ft. reel; Gleaner Baldwin A Allis Chalmers Combine ser#A-27694 12 ft. header ser#12A-44196; Gleaner AC F Combine salvage; 7 ft. x 16 ft. flat-bed factory trailer w/2 ft. dovetail, bumper hitch (Nice!); 8 ft. x 12 ft. Parkhurst trailer w/18" metal tubing sides; John Deere 230 24 ft. folding 3-section disc; IH #46 square hay baler; Case 555 haybine 9 ft.; 5 wheel hay rake; IH 7 ft. sickle mower; smaller 2 wheel pto fertilizer buggy; IH #10 drill 16 x 8"; 8 ft. E-Z flow style drill; JD 10 ft. drill w/rollers; JD 4 row planter; 3 pt. TSC post hole auger 540 pto 12" bit; 3 pt. bale spear; IH 102 7 shank chisel; JD RG4 cultivator; JD 20 series weight brackets; JD 30-40 series cab(rough); JD umbrella & canopy; 6 ft. rotary mower; 6 ft. adj. straight blade; two JD 12 ft. discs; 3 pt. 4 section rotary hoe; 8 ft. JD disc; IH 8 ft. drill; 9 ft. pull type spring tooth chisel; #401 3 section folding field cultivator; 10 ft. pull type disc; JD 65 & IH 3 bottom trip plows; AC snap cplg. 2 bottom trip plow steel wheel; IH 2 bottom trip plow steel wheel; Athens Plow Co. 455 4 ft. terrace off-set disc; burrmill; 4 ft. tumble bug; 5 ft. steel drum roller; salvage AC cultivator; horse drawn manure spreader; AC 12 ft. combine reel and 13 ft. head; Columbian 541 Red Top Grain Bin; 18.4-26 AC tires/rims; JD 13-26 tires/rims; implement tires/rims; 2- two wheel hvy. duty trailers; 4x6 2 wheel lawn trailer; 300 gallon sprayer; fuel barrels/stands; 3 ft. lawn mower front blade & Gannon Eartheavator; 2 ft. lawn roller; Detroit 28 ft. Mobile Home Trailer(aluminum salvage); 4" auger w/motor; salvage items & metal.

FIREARMS & TOOLS & MISC.

Remington Sportsman 12 ga. w/engraving pheasants/ducks; (Mauser?) Model 98 bolt-action high power rifle; Hopkins & Allen Arms Co. 12 ga. single shot; 12 ga. ammunition; (All ATF Rules KS Residents Only!); Ouachita 14 ft. canoe; gas powered 212cc air compressor; upright 60 gallon 110v air compressor; acetylene/oxygen torch set; Lincoln AC 225 welder; older tire/rim changer; 40 ft. Louisville aluminum ladder & others; post vise w/stand; new oil/hydraulic fluid/anti-freeze/filters; log chains & boomers; power & hand tools of all kinds; tractor/implement parts/belts; hydraulic cylinders & hoses; chainsaws; weed-eaters; cement mixer w/motor; trailer house steps; fuel cans; nuts/bolts/hardware; steel fence posts; baler twine; barb wire; National woodstove; Fairbanks Precision Indicator Morse platform scales; Allied vise; Rooster Weather vane; Craftsman 6.25 hp. mulcher mower; floor jacks; dimensional lumber; **Many Many Unlisted tools/misc.!!**

DAY #2: SUNDAY, OCTOBER 2 — 9:30 AM

COLLECTIBLES, HOUSEHOLD & MISC.



Vintage Oak Saloon Bar/Display Front 2 piece Cabinet w/stain-glass (Nice!); Lions Head Oak buffet; Wheat inlaid China 4 section Cabinet & matching dining table w/chairs; fainting couch; ornate settle; Victorian loveseat; Porcelain Wood Stove (Rare!); claw foot piano stool; Ornate Large mirror; oak mirror; dresser vanity w/glass pulls; tear-drop chandeliers; claw-foot lions head couch; Seth Thomas clock; Howard Miller mantel clock; oak desk; child's hump back trunk; Free Westinghouse Sewing machine w/cabinet; leather double recliner; 6 drawer Armorer; Fireplace Heater; squirrel vase lamp; copper & plated items; pottery; glassware; Wizard of Oz picture; vintage pictures & frames; wood ducks; cookie cutters; copper ashtray stand; large amount children toys/books; books; photography items; holiday items; Pro Form treadmill; kitchenette w/chairs; wooden beds; brass roosters; large amount box lot items!; numerous items too many to mention!

Concessions: Chuckwagon. Loader Tractor Day of Auction Only!

SELLER: JIM DeHOFF

Please visit us online at www.KansasAuctions.net/elston for 100+ pictures!!

Auctioneers: ELSTON AUCTIONS • 785-594-0505, 785-218-7851
"Serving Your Auction Needs Since 1994"

LAND AUCTION

THURSDAY, OCTOBER 20 — 6:00 PM

White City Community Bldg. — WHITE CITY, KS

79.4 ACRES ± - MORRIS COUNTY KANSAS LAND

This property would make a nice addition to any cattle or farming operation and is currently approx. 50/50 crop land to hay meadow but the opportunity exists to add additional ag acres. Property Location from White City: North on 2200 Road approximately 4.5 miles. From 2200 Road & B Ave property is located .5 miles north on the east side of 2200 Road.

WILLIAM BAKER REVOCABLE TRUST, SELLER

See upcoming Grass & Grain for complete information or go to www.MidwestLandandHome.com

Midwest Land
and Home

Jeff Dankenbring — Listing Broker 785-562-8386

Mark Uhlik — Broker/Auctioneer 785-325-2740

www.MidwestLandandHome.com

When you want the Best, Call Midwest!

AUCTION

SATURDAY, OCTOBER 1 — 10:00 AM

LOCATED: 1219 Heights Avenue — MARYSVILLE, KANSAS

(From Jct. 36/77 west of Marysville go 1/4 mile West then South). Follow signs.

TOOLS, PICKUP, TRAILER, COLLECTIBLES, UP COLLECTIBLES, HOUSEHOLD

2 Skil cordless drills; SK 1/2" socket set; Dremel type tool; sm. tap & die set; 3/8" socket set; chain hoist; sm. air compressor; grinder; wood carpenter's tool chest; rolling toolbox; elec. drills; B&D saber saw; cordless ratchet; good hand & garden tools; wood straight & step ladders; tow rope; hardware items; 8 gal. shop vac; 1600 PSI elec. power washer; battery charger; telescopic limb trimmer; log chains; cordless screwdriver; foot-locker; white wood cabinet; car stands; hyd. jacks; few T-posts; bar clamps; rods & reels; minnow bucket; **Lawn & Garden:** Wards 5HP tiller; MTD 21" snow blower; Wards push mowers; broadcast spreader; yard art inc.: wishing well, bird bath & urns; gas & elec. weed eaters; B&D elec. hedge trimmers; Toro elec. blower; wheelbarrow; hand sprayers; sprinkling can; gas cans; Little Red Wagon; lawn chairs; porch glider; 4x4x12 redwood post; 2x4s, 6s, 12s; some new guttering & downspouts; wood baseball bats; Bocce Ball game; horseshoe set; insect zapper; Schwinn & Huffy bikes; cassette radio; metal stand; bathroom heater fan unit; **Truck & Trailer:** 1985 Chevy Silverado pickup, V8, auto, 105K; ball hitch 4 wheel 4x8 lawn mower trailer; **Collectible:** oak double glass china cabinet; oak corner china cabinet; oak dresser w/mirror; ornate wall magazine rack; treadle sewing machine; sm. library table; enamelware top cabinet; blanket box; neck yoke with mirrored clock; 4 wood straight chairs; sm. wood bench; child's chair; piano bench; dresser lamps; costume jewelry; pocket knives; handiwork; pillowcases; Marshall County plat books; 1904, 2-1922, 1917 History of Marshall County; MHS yearbooks: 1944-47; 1933 Library Theater calendar; 3 Lone Wolf pictures; Indian picture; dog picture; sm. oval Cupid pictures; 2006 Mint Proof Set; tokens; **163 Pcs. Old Colony Open Lace Pattern Pink Depression Glass;** 16 pl. set of Bavaria Haviland German dishes; Bavaria cream & sugar; salt sellers; jiggers; child's dishes; Coke glasses; Coors glasses; Texasware bowl; kero lantern; Watt #7 bowl; glass baskets; cruet; pitchers; nest of yellow serving bowls; 8 pl. set of silverware in box; commemorative plates; Topps & Fleer baseball card sets 70s to present; Pepsi & Coca Cola Santas; 2 dz. Budweiser holiday steins; Christmas Colonial Village Houses; bird figurines inc.: Goebel; picnic basket; 1960s Marx elec. train; Marx railroad accessory set; neck yokes; ice stongs; wood sled; **Union Pacific Railroad Collectibles:** Wood burning caboose stove; 6 oilers; 12 lanterns; engine torch; flasher; metal crossbuck sign; 24 Adlake locks & keys; belt buckles; safety medallions; glasses; spittoon; pictures; plastic battery flashers; blanket; timetables; modern clock; cigars; 5019 sign; life preserver rings; calendars from 60s to present; **Household:** 18' Kenmore refrigerator; 12' Frigidaire upright freezer; pantry cabinet; modern glass front hutch; wood dining table w/6 chairs & 2 leaves; 2 pc. queen bedroom set; queen sized bed; 3 cushion divan; hide-a-bed; recliner; lift chair; 2 occ. chairs; end table; lamps; night stand; wood desk; bookcase; sm. jewelry boxes; futon; upright & broom vacs; towels; linens; bedding; quilt frame; 3 White Mountain hand ice cream freezers; holiday decor; usual run of pots & pans, dishes, glassware, silverware, hand appliances; roasters; Wagner skillet; tea towels; utensils; cookbooks; Pyrex; Corningware; elec. Nesco roaster; cabinet sewing machine; Bernina sewing machine; Bernette Serger sewing machine; sewing machine table; hoops; quilt material; quilt & pattern books; scissors; threads; spool holder; dehumidifier; card tables & chairs; **many other items. Partial sale bill. For full sale bill & pictures see websites or contact auctioneers.**

www.olmstedrealestate.com • www.marshallcountyrealty.com

TERMS: Cash Sale Day. Statements sale day take precedence. Seller & Auctioneers not responsible for accident or theft. **LUNCH SERVED.**

NORMAN GRAUER

AUCTIONEERS

Tim Olmsted
785-353-2487

Tom Olmsted
970-231-6107

Rob Olmsted
785-353-2210

Jeff Sandstrom
785-562-3788

Since 1954

GRASS & GRAIN

Published by AG PRESS

ARRIVING IN KANSAS
MAIL BOXES SINCE 1954...

Since 1954

GRASSANDGRAIN.COM

...ONLINE SINCE 2007.

Farm Credit celebrates 100th anniversary at Kansas State Fair



Joining in the Farm Credit 100th anniversary celebration at the Kansas State Fair were, from left: Roger Marshall, candidate for the U.S. House of Representatives; Rep. Mike Conaway, Sen. Pat Roberts, Gov. Sam Brownback and Bill Miller, Farm Credit. A time capsule from the 50th anniversary celebration was opened that included a Bible, an American flag, and the loan papers of A.L. Stockwell, Larned, who received the first loan for his cattle operation in 1917.

Photo by Donna Sullivan

Beef Fest names cattle competition winners

Heifers owned by Jamie, Heather, Macey and Delaney Adams of Neosho Rapids and steers entered by John and Jackie Lutz with J & J Farms of Emporia earned grand awards at Flint Hills Beef Fest August 19-21 in Emporia. The grand awards are based on the best combined finish in the live stocker show and grass futurity. The grass futurity took place from April 25 through August 18, with the stocker show held August 20 at Emporia Livestock Sales Company. A total of 102 heifers and 132 steers were entered in the contest.

A pen of three entered by Ron, R.D. and Landon Linsey with Linsey Farms of Lebo won the live stocker show in the heifer division, while cattle owned by Brad and Michelle Haun from

Haun Ranch of Fall River won the heifer grass futurity with an average daily gain of 2.4 lbs. In the steer division, Wesley Cahoon and Lee Glanville, both of Cottonwood Falls, exhibited the champion pen in the live stocker show, while an

entry from Harry Fowler with F & F Feeds of Emporia won the grass futurity by gaining 2.7 lbs. per day.

Beef Fest is the annual celebration of the grass cattle industry in the Flint Hills of Kansas. This was the 30th year for the event.



BAXTER BLACK

ON THE EDGE OF COMMON SENSE

Be deliberate

"If you're in a hurry, be deliberate." It always fascinated me that Charmayne James' horse Scamper looked like he was running slower than the others, but his time was always faster! Was his stride longer? Was his body longer? Were his legs longer? Did it take less strides to go the same distance as the others? Or was each step done with such precision that it eliminated even the slightest misstep that would add micro-seconds to the run?

I watch with awe the rodeo calf ropers that flop the calf to the ground and tie him down with two wraps and a hooley, faster than the eye can see! They usually take the short cut on the tie and wait on pins and needles, hoping it will stay tight the required six seconds. However, he takes a risk by going for speed.

In real life I've developed the attitude that "If you're in a hurry, be deliberate." I don't care whether I'm tying my horse to a mesquite limb, a hitchin' rail, or the side of a trailer, it's a long walk back to the corral if you're afoot! So, say yer in the brush and yer

pardner has a two-hundred pound calf roped around the neck bawlin', his mama bellerin' and chargin' and all of them crashin' back and forth! Many thoughts fly through your mind in the middle of this wreck. Should you try and get a loop around the hocks? Dismount and tie your horse to a branch? Walk down the tight rope, flop the calf and hog-tie him before the bronky cow mows you down, OR...

Stop the picture and think, deliberately. #1: The calf is caught. Regardless of the tangle he's in, he's not getting away. #2: The odds of roping a hind foot in this co-mangled arroyo would be like trying to rope a javelina in a garage with bicycles hanging from the trusses. #3: You have time to dismount and secure your barn-sour horse to a solid limb. #4: You slide your hand down the line, flop the calf and hog-tie him. This releases your pardner from needing to restrain the calf with his rope and he can keep busy shooshing the ferocious mama cow who's now coming at you like a Right Wing hockey monster!

The key to me is to take the extra seconds that will prevent more problems. If during your attempt to hurry, you drop the rein, spook the horse, lose your glove or knock your hat off ... chalk up a demerit. Which causes you to mishandle the tight line, get run over by the calf, get kicked in the groin, burn your hand and drop the calf twice trying to throw him. Finally in desperation you try to imitate Alan Bach with two wraps and a hooley which comes undone as quick as you stand up.

By the third attempt you stop ... and remind yourself, "If you're in a hurry, be deliberate." Steady your hind leg to push forward his hind legs. Drop your piggin' string, loop around the under front leg, pile the others on, take three wraps, one, two, three, pull 'em tight, Umph! Then take at least two hooeys and pull them tight again, Umph! Umph!

Sounds easy but it's a matter of control: tie that rein, take that wrap, cut that ear mark, drive that nail, tie that knot, drill that hole, wash that dish, insert that key, and button your shirt. Do it with the same deliberate concentration you thread a needle, put a Q-tip in your ear, or draw a straight line with a paintbrush.

Keep your mind on your business. Thanks for the lesson Charmayne and Scamper.

Tallgrass for Ca\$h

Register for the Tallgrass Auction site and be entered to win one cash prize of \$500!

Registration is **FREE!**

Visit www.tallgrassauctions.com

Hit the Register button, fill out your information and you are entered in the drawing!

Must register by 12 a.m. CDT Sun., Oct. 16

Drawing will be held at 10 a.m. CDT Mon., Oct. 17

ONLY ONE ENTRY PER PERSON

Odds of winning depend on the number of entrants.

See official rules for complete details at tallgrassauctions.com.

Must be 18 years or older to participate.

No purchase necessary.

Tallgrass Auctions is located at

1531 Yuma Street, Manhattan, Kansas 66502

Tallgrass Auctions Powered by Grass & Grain

NEW
FROM KUHN

SUPERIOR MIXING OF WET BYPRODUCTS AND DISTILLERS GRAINS

Visit our website or your local dealer for details!
CASH IN THE RATION
UP TO \$3,500 OFF SELECT NEW MIXERS
Offer Ends: November 30, 2016



RA 100 SERIES HELIX™ REEL AUGGIE® REEL MIXERS

- NEW Helix Reel provides faster, more complete mixing
- Improved load leveling with the open-concept Helix Reel
- Lower horsepower requirement for more efficient, economical use
- Handles both roughages and small grains

360 & 420 cu. ft. mixing capacities • truck, trailer & stationary models

KUHN
KNIGHT
INVEST IN QUALITY®

KuhnNorthAmerica.com



KanEquip
Clay Center
Ellsworth
Garden City
Herington
Marysville
Topeka
Wamego

Mid-America Truck Equipment
Belleville

R & R Equipment
Fort Scott

O'Malley Equipment
Independence
Iola

Lott Implement
Minneapolis

Midwest Mixer Service
Scott City

Visit your local Kansas Kuhn Knight dealer today!