



Schwieterman Market Outlook

A marketing commentary by Bret Crotts

It wasn't a pretty week for the grain markets. The wheat made new contract lows, the corn is testing the contract low, and the soybeans saw a big drop. The Pro Farmer Tour data suggested greater yield potential than last year for the corn and soybeans and that USDA may be too high in their current corn production estimate, but too low on the soybean production. What this tells us is that both the September and October supply and demand estimates will be very exciting, so stay tuned.

It didn't seem like there was any other news besides

the Pro Farmer Tour. The weather is becoming less of a factor every day and the outside markets were relatively calm until Friday afternoon and the Fed had their press release. Maybe we will see higher interest rates in the future, but we have heard that before. Strength in the Dollar Index won't help the grain markets and another wave of commodity selling will really hurt the farm sector.

On the bright side, demand for corn and soybeans is still great. We will end up seeing upward revisions in several demand categories in the September supply

and demand report and if we do see the markets push lower from here, we will only see the demand numbers increase.

Looking at the charts, I mentioned the contract low in the wheat, which, of course, looks ugly. At this point we have to refer to a continuation chart to pick a downside target and that target is \$3.85. We are only a couple of cents from that right now, so look for a test early in the week. After that we would have round number support at \$3.50 and the \$3.00. \$3.00 seems ridiculously low, and it is, but it is also higher than local cash

prices, so we could see a very large break in the futures market without having much impact on cash price if the basis would return to a more normal level.

The corn is sitting right above critical support, which is the spike low following the August supply and demand report. If that low fails to hold we will have a lot of people talking about a move below \$3.00 and \$2.92 will be thrown out there a lot as a downside target. Before we can think about that kind of move, I think a very real possibility is that the December contract will fall to the September contracts low. Right now that low is at \$3.12 and the first notice day for the September contract is coming up and expiration will be here before we know it. Once the September contract goes off the board, traders will start looking at those lows for the December contract.

The November soybeans

Grass & Grain, August 30, 2016

saw trend line support fail and the next target for that market is \$9.40. The soybeans still have a good chance at avoiding new lows because demand is still strong. We will see a Chinese delegation purchase a huge quantity of soybeans next week and the September supply and demand report probably won't be very negative. We will probably see the test of \$9.40, but that would be a good spot to try and pick a bottom.

Live cattle futures are headed for a test of the July lows. I want to say those lows will hold, but I don't have a lot of faith in that. The October contract is already below the July low on the continuation chart, which will make that look even worse and since we can't get any sustained strength in the cash market, it is hard to be optimistic at all. October live cattle are probably headed for \$100.

Schwieterman Marketing, L.L.C. specializes in risk man-

agement and cash grain and livestock marketing plans. For information on the markets or our marketing service you can contact Bret Crotts at 888-437-9131 or bret@swbell.net.

The information contained herein is based on data obtained from recognized statistical services and other sources believed to be reliable. However, we have not verified such information and we do not make any representations as to the accuracy or completeness. Past results are not necessarily indicative of future results. All statements contained herein are current opinions, which are subject to change. The risk of loss in trading commodity future contracts is substantial. You should therefore carefully consider whether such trading is suitable for you in light of your financial condition. Neither the information, nor any opinion expressed shall be construed as an offer to buy or sell any futures or options on futures contracts.

Colorado, Kansas and Nebraska reach consensus on Republican River Compact

Colorado, Kansas and Nebraska established an agreement last week in the longstanding conflict over water from the Republican River basin, as the Republican River Compact Administration signed two resolutions. Representatives from the three states have been meeting monthly for over two years, in an effort to change the approach and improve how they manage interstate water matters. This effort has created a new focus on transparency and certainty as all three states work to serve their water users. The intent of these resolutions is to replace the need for annual reviews and instead provide long-term surety to

water users.

"Signing these resolutions shows the commitment from all three states to engage in open and transparent dialogue for the past two years," said Kansas Governor Sam Brownback. "This long-term agreement will ultimately improve water management for water users in Kansas as well as Nebraska and Colorado."

The resolutions will provide flexibility and greater certainty to all water users in the region, while remaining consistent with the terms of the Republican River Compact and the Final Settlement Stipulation of 2002. The three states have been involved in

various litigation and arbitrations for the past 15 years over administration of water in the Republican River basin, and this agreement is a significant and positive step forward, with the next steps focusing on working with the basin's water users to implement these agreements.

"We are proud to be part of this historic agreement," said Colorado Governor John Hickenlooper. "For the first time since signing the Compact, the three states have worked together to resolve their issues without litigation and have brought certainty to the water users in the basin. This is how we do our best work in Colorado and de-

fines our approach to addressing our water challenges — cooperation and collaboration."

It has been a priority of the states to collaborate on interstate water matters to ensure each state's water users are protected while also maintaining a positive working relationship between the compacting states. "These resolutions represent a long-term strategy for representing each state and ultimately improving water management for water users in all three states," said Nebraska Governor Pete Ricketts.

The Republican River basin begins in the plains of eastern Colorado and flows through northwest Kansas

and southern Nebraska, ultimately returning to Kansas. The Republican River Compact was negotiated during the early 1940s with participation by the states of Colorado, Kansas and Nebraska and a representative of the President of the United States. The Compact was formally signed in 1942.

Its purposes are to provide for equitable division of such waters, remove all causes of controversy, promote interstate comity, promote joint action by the states and the United States in the efficient use of water and the control of destructive floods, and provide for the most efficient use of waters in the Republican

River basin.

The state official in each of the three states who is charged with administering water law serves on the Republican River Compact Administration. For more information about the Compact, go to the following websites:

- Colorado: <http://water.state.co.us/SurfaceWater/Compacts/RepublicanRiver/Pages/RepublicanRiverHome.aspx>

- Kansas: <http://agriculture.ks.gov/divisions-programs/dwr/interstate-rivers-and-compacts/republican-river-compact>

- Nebraska: <http://dnr.nebraska.gov/iwm/republican-river-compact-2>

MANHATTAN



1-800-834-1029
Toll-Free

OFFICE PHONE 785-776-4815 • OWNERS MERVIN SEXTON & JOHN CLINE

STARTING 10:00 A.M. ON WEIGH COWS
FOLLOWED BY STOCKER FEEDERS — 11:00 A.M.

CATTLE AUCTION EVERY FRIDAY



Our CONSIGNMENTS can now be viewed after 12 Noon on Mondays by going to www.grassandgrain.com & logging onto the online subscription

With the welcome rains on Thursday & Friday we had a weather-shortened run for our sale Friday, Aug. 26. Light steers & heifers sold fully steady to strong prices on a light offering. Heavy weight calves and yearlings were selling on a lower trend. Cull cows and bulls sold \$2 to \$3 lower.

STEER CALVES — 375-550 LBS.

Alma	4 blk	416@197.00
Washington	3 blk	448@189.00
Longford	5 blk	457@173.00
Hoyt	5 blk	532@172.75

FEEDER STEERS — 550-900 LBS.

Longford	5 blk	586@164.50
Leavenworth	10 Red Angus	636@160.00
Hoyt	8 blk	669@157.00
Leavenworth	5 Red Angus	558@155.00
Pomona	8 blk	655@153.75
Pomona	5 blk	581@153.75
Alma	6 blk	654@152.00
Onaga	11 blk	698@151.50
Centralia	3 blk	578@148.00
Cassoday	3 blk	700@148.00
Auburn	7 blk	724@147.00
Centralia	10 blk	702@144.00
Alma	6 blk	765@143.50
Allen	26 blk	849@143.00
Leavenworth	3 xbred	710@137.50
Centralia	5 xbred	728@136.00
Auburn	6 blk	891@135.75
Allen	15 Hereford	849@135.00
Cottonwood Falls	23 blk	878@130.00

HEIFER CALVES — 300-550 LBS.

Washington	4 blk	315@199.00
Alma	3 blk	370@181.50
Washington	8 blk	396@179.50
Hoyt	6 blk	528@159.00
Longford	4 blk	512@149.00

FEEDER HEIFERS 550-825 LBS.

Alma	8 blk	583@147.00
Council Grove	26 blk	629@146.25
Cassoday	7 blk	652@144.50
Pomona	9 blk	603@143.00
Hoyt	5 blk	629@141.50
Alma	11 blk	677@139.25
Alma	23 blk	687@139.00
Onaga	6 xbred	622@138.00
Council Grove	23 blk	742@134.25
Centralia	9 blk	710@134.25
Alma	10 blk	763@134.00
Onaga	12 xbred	703@134.00
Leavenworth	6 xbred	765@132.25
Alma	6 blk	735@132.00
Prairie Village	21 Red Angus	822@131.50
Pomona	6 blk	755@130.50
Cottonwood Falls	6 blk	755@130.50
Centralia	5 blk	706@129.50

COWS & HEIFERETTES — 750-1,950 LBS.

Prairie Village	1 xbred	855@127.00
Prairie Village	1 xbred	935@126.00
Manhattan	1 xbred	760@110.00
Havensville	1 blk	1160@109.00
Easton	1 blk	1145@107.00
Alta Vista	1 Hereford	1095@105.00
Washington	1 blk	1125@100.00
Wakefield	1 blk	785@95.00
Allen	1 blk	1805@83.50
Havensville	1 xbred	1415@81.50
Vermillion	1 blk	1515@80.50
Alta Vista	1 Hereford	1280@79.00
Burlingame	1 blk	1270@79.00
Olsburg	1 blk	1755@78.50
Beattie	1 blk	1570@77.50
St. George	1 blk	1500@77.00
Alta Vista	1 blk	1945@77.00
Alta Vista	1 Hereford	1245@77.00
McLouth	1 Hereford	1640@76.50

Alta Vista	1 Hereford	1325@76.00
Blaine	1 xbred	1060@76.00
Beattie	1 blk	1745@76.00
Alta Vista	1 Hereford	1555@75.00
McLouth	1 Hereford	1495@74.50
Frankfort	1 blk	1540@74.00
Beattie	1 blk	1285@74.00
Council Grove	1 bwf	1290@734.00
Auburn	1 blk	1330@72.50
Beattie	1 bwf	1435@71.00
Manhattan	1 xbred	875@70.00
Allen	1 xbred	1075@70.00
Beattie	1 xbred	1130@70.00
Manhattan	1 Holstein	1835@68.00
Blaine	1 Holstein	1335@65.00
Blaine	1 Holstein	900@60.00
Manhattan	1 Holstein	1465@57.00
Blaine	1 Holstein	995@53.00

COW/CALF PAIRS

	AGE	
Allen	1 blk 4	@1800.00
Allen	1 blk 5	@1700.00
Havensville	1 blk S	@1400.00
Allen	1 blk 8	@1375.00
Allen	1 blk SS	@1200.00

BRED COWS

	AGE	MO	
Wakefield	15 blk 2	8-9	@1850.00
Wakefield	6 blk 2	6-8	@1700.00
Easton	1 blk 3	6	@1250.00
Easton	1 bwf SS	6	@1100.00
Beattie	2 blk 6-7	5	@1050.00

BULLS — 1,125-2,025 LBS.

Frankfort	1 blk	1145@110.00
Alma	1 blk	1575@93.00
Council Grove	1 blk	1825@91.00
St. John	1 blk	1420@91.00
Ogden	1 blk	1690@91.00
Council Grove	1 blk	1540@91.00
Ogden	1 blk	2015@89.00

CONSIGNMENTS FOR SEPT. 2:
72 blk & bwf feeder hfrs, no implants, 800-850 lbs.
60 Choice Reputation blk & bwf str & hfrs, 500-650 lbs.

CONSIGNMENTS FOR SEPT. 9:

To start Selling at 11:30 AM
20 Big Fancy homeraised blk LimoAngus X 1st calf hfrs. 15 w/June & July calves, balance 30-day-old calves by side.
Calves sired by Angus bulls & exposed back to Angus bull since July 15th
6 Big Fancy Angus 1st calf hfrs w/Angus-sired July calves by side

60 Choice Reputation homeraised Angus replacement quality hfrs, 45 days weaned, 600-750 lbs.
55 Choice Reputation homeraised Angus replacement quality hfrs, 45 days weaned, 600-750 lbs.
45 Choice Reputation homeraised Angus & bwf replacement quality hfrs, 45 days weaned, 600-750 lbs.

VISIT US ON THE WEB FOR DAILY CONSIGNMENT UPDATES AT WWW.MCCLIVESTOCK.COM

FIELD REPRESENTATIVES

JOHN CLINE	SAM GRIFFIN	BRENT MILLER	ALAN HUBBARD	MERVIN SEXTON	BILL RAINE	TOM TAUL	JEFF BROOKS	BRYCE HECK	DAN COATES
ONAGA	BURNS	ALMA	OLSBURG	MANHATTAN	MAPLE HILL	MANHATTAN	BEATTIE	LINN	BALDWIN
785-889-4775	620-726-5877	785-765-3467	785-468-3552	Cell: 785-770-2622	785-256-4439	785-537-0036	785-353-2263	785-348-5448	785-418-4524
Cell: 785-532-8381	Cell: 620-382-7502	Cell: 785-587-7824	Cell: 785-410-5011	Home: 785-770-2622	Cell: 785-633-4610	Cell: 785-556-1422	Cell: 785-562-6807	Cell: 785-447-0456	

Kansas Hay Market Report

Hay trade activity steady. Demand light to moderate for grinding alfalfa, light for all other classes of hay, prices steady. A most welcomed cool-down spread over Kansas behind a cold front, but to no surprise, we had to endure another round of rain and thunderstorms before it arrived. Sedgwick and Butler Counties saw rainfall totals between five and seven inches, most within a 2-hour time frame. Rains are expected to return later in the week, as well. According to the U.S. Drought Monitor, the abnormally dry category stayed steady at 13.04 pct and persists primarily along the northern tier of counties in the northeastern and northwestern regions. The NASS Kansas Crop Progress and Condition report for the week ending August 21, 2016 has alfalfa hay conditions at 1 pct very poor, 4 pct poor, 32 pct fair, 58 pct good, and 5 pct excellent.

Alfalfa hay third cutting was 91 pct complete, equal to last year, but ahead of 81 pct average. Fourth cutting was 30 pct complete, ahead of 25 pct last year and 13 pct average. If you have hay for sale, pasture to rent or need hay and/or grazing, use the services of the Hay and Pasture Exchange: www.kfb.org/commodities/haypasture/index.html

Southwest Kansas

Dairy alfalfa, alfalfa ground and delivered, grinding alfalfa steady. Movement slow for dairy alfalfa and moderate for grinding alfalfa and alfalfa ground and delivered. Alfalfa: Horse, small squares 220.00-250.00, new crop, mid and large squares 135.00-145.00. Dairy, .75-.85/point RFV, Supreme 130.00-160.00, Premium 120.00-155.00, Good 105.00-145.00. Stock or Dry Cow alfalfa, old crop 80.00-100.00. An instance of new crop, mid squares, 140.00. Fair/Good grinding

alfalfa, 55.00-70.00, 70.00-80.00 delivered locally. Ground and delivered locally to feedlots and dairies, 100.00-105.00, old crop 115.00-120.00. The week of 8/14-8/20, 11,825T of grinding alfalfa and 300T of dairy alfalfa were delivered. Corn stalks, ground and delivered 80.00-85.00. Straw, mid squares, 50.00-55.00. The average paid by feedlots on August 1 for alfalfa ground and delivered was 110.69, down 1.25 from last month, usage was 767T/day, down 26 pct, and total usage was 23,775T.

South Central Kansas

Dairy, grinding alfalfa, alfalfa ground and delivered, and alfalfa pellets steady, movement slow to moderate. Alfalfa: Dairy, .70-.85/point RFV, Supreme 130.00-155.00, Premium 120.00-155.00, Good 100.00-145.00. Stock cow alfalfa, 100.00-120.00. Fair/Good grinding alfalfa, 50.00-60.00 edge of the field, 70.00-90.00 delivered locally. Ground and delivered locally to feedlots 100.00-105.00, instance of 110.00. The week of 8/14-8/20, 3,387T of grinding alfalfa and 275T of dairy alfalfa were delivered. Alfalfa pellets: Sun Cured 15 pct protein 135.00-145.00, 17 pct protein 150.00-160.00, Dehydrated 17 pct 220.00-230.00. Grass hay: bluestem, mid and large squares none reported, large rounds 65.00-70.00. Corn stalks, ground and delivered 55.00-65.00. Oat hay, large rounds 65.00-70.00. Straw, large rounds, 50.00-60.00. The average paid by feedlots on August 1 for alfalfa ground and delivered was 104.45, up .43 from last month, usage was 284T/day, up 1 pct, and total usage was 8,813T.

Southeast Kansas

Alfalfa, brome, steady, prairie hay down slightly, movement slow. Alfalfa: Horse or Goat, mid squares 250.00-265.00, small squares 265.00. Dairy and Stock Cow .80 to .95/point RFV. Good grinding alfalfa 55.00-60.00. Ground and delivered, old crop, 80.00-85.00. Grass hay: bluestem, small

squares 100.00-110.00. Good, mid and large squares 60.00-80.00, large rounds 55.00-65.00. Brome: small squares 130.00-135.00. Good, mid and large squares, new crop 75.00-90.00, large rounds, new crop 60.00-70.00. Straw, mid squares 50.00-60.00. Grass Mulch, large rounds 40.00-50.00. Fescue, new crop rounds 20.00-30.00 delivered locally.

Northwest Kansas

Dairy alfalfa, grinding alfalfa steady, movement slow. Alfalfa: Horse/Goat, small squares 225.00-275.00 delivered locally. Dairy, Premium/Supreme .80-1.00/point RFV. Stock cow, fair/good 100.00-110.00. Good, large rounds 80.00-90.00. Fair, grinding alfalfa 65.00-75.00. Ground and delivered locally to feedlots and dairies 100.00-105.00.

North Central-Northeast Kansas

Dairy alfalfa, grinding alfalfa, prairie hay and brome steady, movement slow. Alfalfa: Dairy .80-.95/point RFV, Supreme 150.00-175.00. Premium 135.00-175.00, Good 120.00-160.00, small squares 8.00/bale. Stock Cow, good 100.00-140.00. Fair/Good, grinding alfalfa 60.00-70.00. Ground and delivered 100.00-120.00. Grass hay: bluestem, small squares 6.00/bale delivered locally, large squares 70.00-85.00, large rounds 55.00-65.00. Brome: Good, small squares 7.00/bale, mid and large squares 100.00-120.00, good large rounds 60.00-70.00, fair 50.00-60.00. Straw, good, small squares 4.00/bale or 5.00/bale delivered, large square bales 60.00-80.00, and large rounds 70.00-85.00. CWF grass mulch 65.00 per large round bale.

***Prices are dollars per ton and FOB unless otherwise noted. Dairy alfalfa prices are for mid and large squares unless otherwise noted. Horse hay is in small squares unless otherwise noted. Prices are from the most recent sales.

*CWF Certified Weed Free

*RFV calculated using the Wis/Minn formula. **TDN calculated using the Western formula. Quantitative factors are approximate, and many factors can affect feeding value. Values based on 100% dry matter (TDN showing both 100% & 90%). Guidelines are to be used with visual appearance and intent of sale (usage).

Source: Source: Kansas Department of Agriculture - Manhattan, KS Kim Nettleton 785 564-6709 Posted to the Internet: www.ams.usda.gov/mnreports/DC_GR310.txt

REAL ESTATE AUCTION

THURSDAY, SEPTEMBER 8, 2016 — 6:00 PM
Held in the CITIZEN POTTAWATOMI COMMUNITY BUILDING
806 NISHNABE TRAIL, ROSSVILLE, KANSAS

Approx. 80 ACRES SHAWNEE COUNTY, KS

Located at the southeast corner of 35th and Docking Road. (Approx. 1 1/2 miles west of Silver Lake, on Hwy. 24 to Docking Road then south approx. 1/4 mile). Farm has approx. 75 tillable acres of dryland River Bottom farmland.

See last week's Grass & Grain for complete details!

ROBERT S. REID TRUST

GANNON REAL ESTATE & AUCTIONS
VERN GANNON, BROKER/AUCTIONEER

785-770-0066 • MANHATTAN, KANSAS • 785-539-2316
www.gannonauctions.com

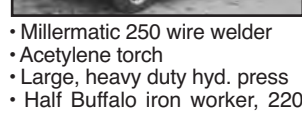
WELDING SHOP TOOLS & EQUIPMENT AUCTION

SATURDAY, SEPTEMBER 17 — 10:00 AM
AUCTION LOCATION: From the Jcts. of Hwy. 99 and Hwy. 24 in Wamego, KS, go 4 miles East on Hwy. 24 to the Onaga Rd., then 4 miles North on the East side to: 7645 Onaga Rd., Belvue, KS. Due to Health Issues, I will disperse my Welding Business. LUNCH ON GROUNDS.



TRACTORS, TRUCK & TRAILERS

- John Deere 4020 dsl. tractor, SN-T213R170153R Synora Range, 8,472 hrs., 18.4x34 tires; Sells with Koyker K-5 loader with 7 ft. bucket and aux. 3 valve hyd. — Good Shape
- IHC Farmall 560 gas tractor with NF, FH, 15.5x38 tires, rough condition, Sells with a Du-Al loader with 7 ft. bucket
- 2 sets of loader pallet forks
- 2004 Chevy 2500 HD 3/4 ton 4x4 extended cab pickup with 7 ft.x7 ft. Winkler flatbed, heavy duty Circle K bumper and grill guard, 202,800 miles, 6.0 litre gas motor — Looks and runs good
- H & H 25 ft. dove tail flatbed gooseneck trailer with dual tandems, good tires, dual stands — Good Shape
- Travalong 6 ft.x16 ft. gooseneck stock trailer with center gate — Good Pasture Trailer
- WELDERS & SHOP EQUIP.**
- Miller Bobcat 250 EFI AC-DC 12,000 watt Welder/Generator, fuel injected with very long leads — Runs Perfect
- Millermatic 250 wire welder
- Acetylene torch
- Large, heavy duty hyd. press
- Half Buffalo iron worker, 220 amp.
- Roller conveyor table (for cutting pipe)
- Large, metal storage rack
- Hand operated sheet metal shear
- Hyd. pipe bender
- 2 gate jigs and continuous fence panel jigs
- Several pipe and metal storage racks
- Paint hooks with rollers
- Trailer load of asst. power and hand tools, bolts and asst. shop items
- Bobcat Hyd. post hold digger with 15" and 9" augers with storage rack (loader mount)
- Shaver loader mount hyd. post or pipe driver — Good



FEEDERS, panels and asst. metal inc.:

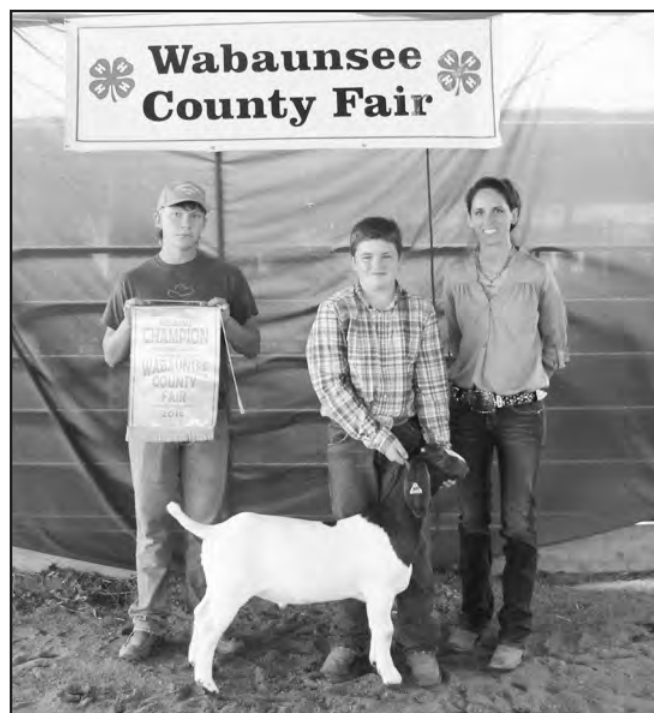
- 6 new 8 ft. round bale feeders
- Approx. 40 6 bar X 20 ft. 1 1/4" pipe continuous fence panels
- 32 ft.x12" heavy wall pipe
- Some new angle, flat and round steel
- Several 2 3/8 and 2 7/8 8 ft. pipe posts
- Several pallets of iron and pipe of various sizes
- Pile of good railroad bridge ties



SELLER: DIAMOND "S" ENTERPRISES
Richard Shum, ph. 785-458-2351

TERMS: Cash or valid check. Not responsible for accidents or theft. Statements made sale day take precedence over printed material.

Auction Conducted By: **CLINE REALTY & AUCTION, LLC**
John E. Cline, Broker-Auctioneer
ONAGA, KANSAS • 785-889-4775 or 785-532-8381
Austin Cline, Auctioneer, Frankfort, KS • 785-565-3246
www.mcclivestock.com/clinerealty



Tate Deeve, Happy Valley 4-H, showed the reserve champion market meat goat at the Wabaunsee County Fair. Karl Dawn Stover judged the event.

Commercial Building, Lots & Personal Property (formerly Washington County Health Department)

AUCTION

THURSDAY, SEPTEMBER 15, 2016
REAL ESTATE TO SELL AT 6 PM, PERSONAL PROPERTY TO FOLLOW.

Auction will be held under the awning at the corner of
2nd & C Street, WASHINGTON, KS
OLD HEALTH DEPT. OPEN HOUSE: Sept 10, 2016
1:00 p.m. to 2:00 p.m.

TRACT 1: A brick commercial office building with approx. 1,271 sq ft on the main level. This structure is centrally heated/cooled and has 5 separate rooms, two half-baths, and a lobby area on the main floor. The building is accessible both from the front and back. The back entrance has a ramp for easy access. The building has newer vinyl replacement windows and a good roof. The basement, accessible by both front and back (north & south), has several finished rooms including a utility room, 3/4 bath, commons area, and several other rooms. This multi-use building built in 1960 has stood the test of time. It is rock solid and is ready for many more years of service. (115 W 3rd Street, Washington, KS)

TRACT 2: ORIGINAL TOWN OF WASHINGTON, LOT 4-6; and LOTS 7-10 EXC BEG SW COR LT 10 TH E108.8' N40' W108.8' S37' TO POB, BLOCK 24, SECTION 01 TOWNSHIP 03 RANGE 03. Seven gently rolling lots on the east end of 3rd street in a residential setting. The property is approx. 27,600 sq ft, has mature trees, and sits across the street from the newly remodeled Washington County Hospital.

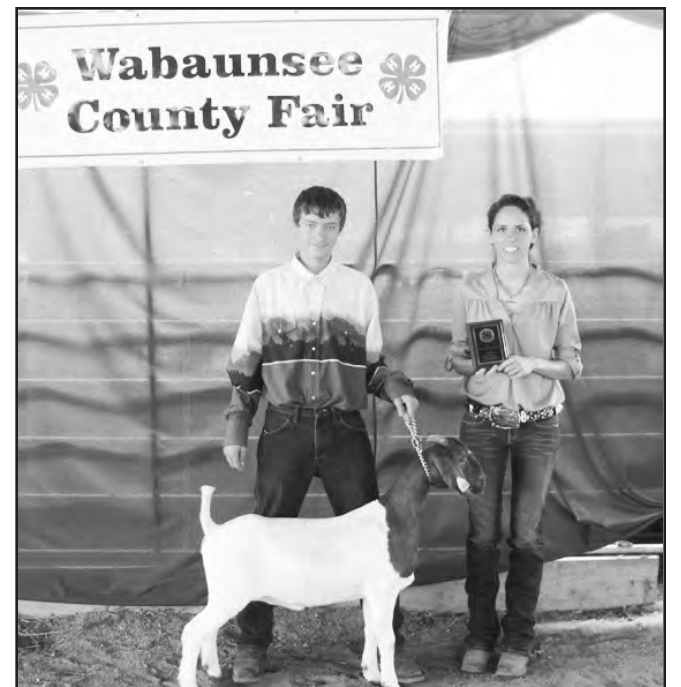
PERSONAL PROPERTY: Sargent & Greenleaf Safe; Several office desks and chairs; Pallet of rock edging; 8 plastic stackable chairs; Privacy divider; 2 older American Standard furnaces; Large attic fan; Aluminum suitcase; Several doors and doorjamb; Walkers; Small gas heater; 2-110 air conditioners; Aluminum scoop shovels; 2 — bath-type scales; Hanging lights; Approx. 13 boxes-12x12 ceramic floor tile; Iron mesh security door; Decorative mirror; Desk lights; Tiffany-style hanging light fixture; Track lights; Can lights; Copper-colored aluminum shingles; Stereo; Video projector; Pack-n-play; Baby gate; Energizer battery charger; Misc computer items-mouse, keyboard, & other; Printer/scanner/copier; Height/weight chart; 10+ multi-line telephones; 2 wooden brochure holders; Multiple filing systems; Office organization supplies; Water dispenser.

For pictures, visit our website: www.MidwestLandandHome.com
SELLERS: WASHINGTON COUNTY COMMISSIONERS

Terms & Possession: 10% down day of the sale, balance due at closing on or before October 21, 2016. 2016 taxes will be prorated to day of closing. Title insurance, escrow and closing costs to be split equally between buyer and seller. Possession on closing. This property to be sold as-is. All inspections should be made prior to the day of the sale. This is a cash sale and will not be subject to financing, have your financing arrangements made prior to sale day. Midwest Land and Home is acting as a Seller's Agent and represents the seller's interest. All information has come from reliable sources; however, potential bidders are encouraged to verify all information independently. EBH Law Office will act as escrow and closing agent. Statements made sale day take precedence over printed material.

Midwest Land and Home

Mark Uhlik — Broker/Auctioneer 785-325-2740
www.MidwestLandandHome.com
When you want the Best, Call Midwest!



The champion market breeding goat at the Wabaunsee County Fair was shown by A.J. Eddy of the Friendly Farmers 4-H Club. He is pictured with judge Karl Dawn Stover.

BID YOUR PRICE! ONLINE ONLY ENDS SEPTEMBER 12

Items Located in Winfield, KS



• 2014 Case IH 8230 combine, 327 eng hr, 255 threshing hrs, Pro 700 monitor



• 2014 Case IH Steiger 370 4WD, 669 eng hrs, 1000 RPM pto, 3pt, comfort cab



• Case IH SDX40 air seeder & ADX3380 cart w/triple tank

REGISTER AND BID:
www.theurer.net

TAR THEURER
AUCTION / REALTY

JEREMY WIENS,
AUCTION MANAGER
316.640.3193 (CELL)
620.326.7315 (OFFICE)



Classic Car Show Saturday, September 3 in Abilene

Magnificent classic cars and trucks will fill Texas Street in Abilene Saturday, Sept. 3, during the Chisholm Trail Classic Car Show held in conjunction with the pre-150th celebration of the end of the Chisholm Trail.

"We are hoping our first-year Chisholm Trail Classic Car Show will have at least 150 cars," said Dustin DeWeese, co-owner of Chisholm Trail Classic Auto, sponsor of the show. "We have been working hard to make it a top-notch event."

With a business on Texas Street, it's natural for DeWeese to feature the colorful history represented by the Chisholm Trail, from the marker commemorating the end of the Chisholm Trail at the Texas Street-Buckeye intersection to larger historical treasures, such as the white former livery north of Sims Termitte, the only actual building remaining from Texas Street businesses of the 1800s.

"The famous sheriff Wild Bill Hickok patrolled the area north of our building regularly," DeWeese said.

"Historic sites mention often the rough and tough actions of cowboys celebrating the end of the trail and their encounters with lawmen right on Texas Street."

Classic Auto is pleased to partner with Abilene's Convention and Visitor's Bureau in promoting the Chisholm Trail celebration. Abilene's trolley will shuttle car-show participants to Old Abilene Town along with making other stops to assist car show people in getting to activities in the 5-star historic district.

"From sharing costs on a billboard near Hays, sharing signs on metal longhorn steers down Buckeye to sharing time on television talk shows, working together has been enjoyable," DeWeese said.

Individuals at the Chisholm Trail Classic Car Show will be able to watch the parade of 30 longhorns, horses and buggies, and native American Dancers going down Cedar at the west end of Texas Street and can also have a free horseback ride in the lot east of

Chisholm Trail Classic Auto after the parade. If desired they could take the whole family on a horse and buggy ride through Abilene for a fee set by the buggy drivers.

In a special activity for car enthusiasts, Jeremy Gilbert from Junction City will provide an item not often seen at car shows when he brings his Dyno machine to the Abilene classic car show. Classic car owners who want to test their car's horsepower can do it on the Dyno machine and testing is available on the total car "to help find pesky issues in the drivetrain and calibration" according to a Dyno release.

At 3 p.m. 25 prize plaques will be awarded to autos chosen by judges as Best Chevy, Best Ford, Best Paint, Best Interior and numerous others areas, with the Best of Show Award also

receiving a cash prize. The car club bringing the most cars from club members into the show will receive a \$100 cash prize.

EZ Pieces, a band from Topeka will bring in sounds from the past, entertaining with 1950s, '60s and '70s music beginning at 11 a.m. A wireless sound system brought in from Newton will enable the band to be heard over several city blocks.

In addition, can-can dancers from Old Abilene Town plan to drop by the car show to perform a couple of numbers. Hopefully Wild Bill Hickok will also be present to keep rowdy cowboys from acting rude to the dancers.

"A highlight of the day will be a beer 'garden' inside the Classic Auto building where folks can have a drink, enjoy a huge variety of antiques, and visit with

friends while getting a break from the sunshine for a while," DeWeese said. "The beer garden will be sponsored by Duff Dolton, co-owner of Chisholm Trail Classic Auto."

With Joe Snuffy's restaurant in the show area providing home-cooked meals and DVN Plumbing selling barbecue items, car show enthusiasts can easily have

meals at the show, DeWeese added. Vendors will also sell hot dogs, corn-on-the-cob, kettle corn, funnel cakes and other snack items, plus lemonade, tea and colas. Free bottled water will be provided by Chisholm Trail Classic Auto.

For added information call 785-280-9709 or use www.chisholmtrailclassicca.rshow.com

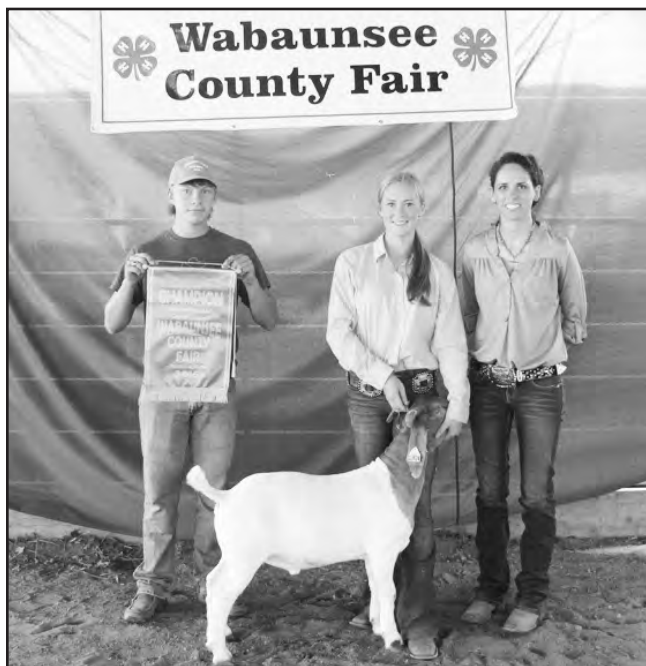


Knetter Chicken Farms purchased the reserve champion pen of three chickens exhibited by Elise Collins at the Wyandotte County Fair.

OIE introduces One Health web portal

The World Organization for Animal Health (OIE) has launched a new online portal as a part of its One Health concept that features tools for stakeholders to utilize in controlling worldwide animal health risks. One Health works to connect human and animal health professionals and stresses their interdependence in tackling many health issues. The portal will host fact sheets, explanatory tools, videos, press releases and information on events related to One Health.

To visit the portal, visit www.oie.int/en/for-the-media/onehealth/.



The champion market meat goat at the Wabaunsee County Fair was shown by Britt Michaelis of the Newbury 4-H Club.



Katelynn Martin exhibited the grand champion pen of three chickens at the Wyandotte County Fair. Foreland Group, Inc. was the premium buyer.

GAVELROADS
ONLINE AUCTIONS

View www.gavelroads.com to bid!! Here are a few of the items for the next auction; ends on August 31, 2016, starts to close at 10:00 am.

Daewoo Mega MG400 loader • 1990 Cat 235C excavator • 1998 Hycac C778B roller • 1997 Cedar Rapids CR461 paver • 1992 Cat PS180 pneumatic roller • AR Ind. sandblaster • 2003 Econoline Backhoe Pro implement trailer • 1996 Case 586E rough terrain forklift • 1986 Flint 24' boat with 454 Chev. engine • 1930 Ford Model A Coupe • 1931 Model A Ford Sedan. **More coming online every day!!**

For more information call or email: (316) 425-7732 • connect@gavelroads.com
gavelroads.com

FARM & HOUSEHOLD AUCTION

For HAROLD & CRYSTAL KURTZ ESTATE
SATURDAY, SEPTEMBER 10 — 9:00 AM
627 Market Street — PORTIS, KANSAS

TRACTORS: John Deere A; John Deere 8110 w/3605 hrs.; MM G Propane 4036. **FARM MACHINERY:** JD 9500 combine (2471 eng, 1797 sep); JD Field Cutter (35) H3300 w/2 rowhead & pickup teal; 32' Kent Series V 6330-95; 1900 Krause Disk w/Drags; Hesston Stack Wagon 30A; 2row JD lister; JD Sickle Mower #8; (2) JD Go-Digs; New Holland 256 5 Bar Rake; New Holland 351 Grinder Mixer; Sunflower 17' undercutter w/AA; Hesston Stack Mover; Case 4x16 Plow; C.D. Edwards Road Grader; Horse Drawn Blade; JD 400 Rotary Hoe; Sunflower Disk w/Drags; EZ Trail Model 475 Grain Cart; Great Plains Solid Stand 24 Disk; Hayliner 273 Baler; UFT Category grain Wagon (750 bu). **OTHER FARM ITEMS:** Fuel tank w/elec. pump; Jet Co. Wire Winder; Hutchins 48' Auger 8"; 250 gal. Propane Tank; PU Stack Rack; 6x8 Irrigation Pump; Combine Bin Trailer; Cattle Working Chute; Panels; Alleyway; #12 Smooth Wire; elec. fence posts; water tank; elec. wire; (4) 18.4 R42 Firestone and Goodyear Tires. **TRUCKS & PICKUP:** 1973 IHC Loadstar 1600 w/15 1/2' box w/hoist; 1973 Chev. C60; Chev. 4400 Truck; Nice 2003 Ford F150 XLT Pickup (Triton V8) w/42K. **CAR:** 2007 Toyota Avalon 4 dr, 56K. **BOAT:** Boat w/Evinrude OB mtr & trlr. **4 WHEELERS, GOLF CART, ETC:** 4 whl sprayers; Big Red Honda; ATV Ramps; Honda 100 S motorcycle; Polaris 250 Trail Boss 4 wheeler; JD SX75 riding mower; Almost New Yamaha Golf Cart w/Golf Encloser (gas); Coast to Coast & Mantis Tillers. **TOOLS:** Shop Vac; Handymen Jack; Hand Tools; Battery Charger; sockets; IHC Fence Charger; Ryobi elec. blower; Stihl & Homelite chain saws; car ramps; air Compressor & bubble; elec. winch; Drills; Dazey Sharpener; pressure washer; tree saw; Wildlife Control Crow Scarer. **ANTIQUES & COLLECTIBLES:** Galv. tubs & double washtub; #4 Newhouse & #2 Victor Traps; Ig. Sled; Old License Plates; Saddle; Peter Wright Anvil; Ruckles & Red Wing Crocks; McCormick table top cream separator; Belt Buckles; Chenille bedspread; Jewelry. **FURNITURE & HOUSEHOLD:**

SALE CONDUCTED BY: WOLTERS AUCTION
627 Market St., Box 68 • Portis, KS 67474
Cols. Jim Wolters and Rich Fairbank, auctioneers
Phone 785-346-2071; Cell 785-545-7097
Email: wauction@ruraltel.net
Website: www.woltersauctionandmore.com

CHASE COUNTY • MIDDLE CREEK VALLEY 118.5 ACRES FLINT HILLS COLLETT CREEK AUCTION

THURSDAY, OCTOBER 6 — 7:00 PM
AUCTION LOCATION: Community Building, Swope Park,
COTTONWOOD FALLS, KANSAS

Property of
WILLIAM LAMEY & the late DONNA STARKS LAMEY

PROPERTY ADDRESS: 822 Middle Creek Rd. Elmdale, Ks.
PROPERTY LOCATION: From Elmdale Ks and Hwy 50, the property is 4 miles west, northwest on the paved Middle Creek Rd. The property is on the North side of the county road.

See full details & photos at
www.GriffinRealEstateAuction.com

RICK GRIFFIN
Broker/Auctioneer
Cell: 620-343-0473

Griffin
Real Estate & Auction
Service LC

CHUCK MAGGARD
Sales/Auctioneer
Cell: 620-794-8824

305 Broadway
Cottonwood Falls, KS 66845
Phone: 620-273-6421 • Fax: 620-273-6425

Toll Free: 1-866-273-6421

In Office: Nancy Griffin, Heidi Maggard
Email: griffin123r@gmail.com
www.GriffinRealEstateAuction.com

AUCTION

SATURDAY, SEPTEMBER 10 — 10:00 AM
Auction held at 922 Thompson Street or 1 block east & 2 1/2 blocks north of the Chester Auditorium, CHESTER, NEBRASKA

PICKUP, TRACTORS, 4 WHEELER, & MACHINERY
2000 Ford F-150 XLT extended cab 4x4 pickup, Triton V8, auto, air, 173,000 mi. red color, hail damaged w. Delta pickup tool box; Case 1030 diesel tractor, cab, wf, dual hyd, 4361 hrs., w. Dual 300 front loader & bale stabber; 1951 IHC M Farmall gas tractor, wf, rear weights, w. hyd. front loader, 1 new back tire; 1948 IHC H Farmall gas tractor, nf, don't run; 10x5ft. metal utility tilt bed trailer; 1995 Honda 4x4 four track 4 wheeler w. racks; 3pt. post hole digger. **HORSE ITEMS, LAWN EQUIP. & TOOLS**
Enclosed 2 horse tandem bumper hitch trailer; 2 wheel & 3pt. big bale movers; big bale feeder; oblong stock tank; horse training videos; nice roping saddle; 4 nice adult stock saddles; 3 kids stock saddles; large assortment. bridles, halters, lead ropes, pads, lariat ropes, double tree;

barn rope; Huskee LT 4600, 19 hp. 46in. riding lawn mower w. bagger; Fimco lawn sprayer; lawn spreader; 5gal. air compressor; DeWalt 10in. chop saw; 2 DeWalt cordless 18v 3/8 in. drills; jump start box; wrenches; socket sets; hand saws; hand & garden tools; creeper; air bubble; 4in angle grinder; 5th wheel hitch; chain saw; roll 16in flashing tin; circular saw; jig saw; small cutting torch; 4-H box; shop vac; moving cart; elect. fence posts.

HOUSEHOLD & ANTIQUES
Visio 30in. Flat screen TV; Lazy Boy rocker recliner; flowered couch; Dell computer; computer desk; hall tree; roller walker; elect. heaters; & lots household not mentioned; Antiques; Claw foot glass ball parlor table; oak side board buffet; hay hooks; 2 cross cut saws; metal water cans; cast tea kettle; hand sie; blow torch; & other.

Be on time auction will be over around noon. Terms Cash or Check. Not Responsible for Accidents

WILLARD RIEKE ESTATE
Susan Moxham Executor

AUCTIONEERS: NOVAK BROS. & GIEBER
Website: www.nckcn.com/novakbrosbieberauction/
Roger Novak 785-527-2626
Les Novak 785-987-5588
Butch Gieber 785-729-3831
785-527-1302 (Cell) Troy Novak, 785-987-5372
Clerk: Scott Clerking, Belleville, Ks.

RETIREMENT AUCTION

REAL ESTATE & FARM MACHINERY

320 Acres, m/l, of S. Wabaunsee County Pastureland, Hayland and Tillable Farmland with Farmstead

SATURDAY, SEPTEMBER 10, 2016
Starting Times: Farm Machinery — 11:30 AM, Real Estate — 2:00 PM

AUCTION LOCATION: From the Jcts. of Hwy. 99 & Hwy. 4 in Eskridge, KS, go 1.2 miles west & south on Old K-4 Road, then 1/2 mile on west on Old K-4 Rd.

• **REAL ESTATE: TO BE OFFERED AT 2:00 P. M. AT MACHINERY SALE SITE**
REAL ESTATE LOCATION: From the Jcts. of Hwy. 99 and Hwy. 4 in Eskridge, KS, go 1.2 miles west and south on Old K-4 Rd., then continue on south 1 mile on Allen Rd. to Headwaters Rd., then 1 mile west on the north side.

If you are looking for property with lots of recreational and stock farm potential in beautiful Wabaunsee County, KS ... Come Take a Look!!!
For more info or viewing, please call John E. Cline, 785-532-8381 or check our website: www.mcclivestock.com/clinerealty

TRACTORS, COMBINES, HEADS & HEADER TRAILERS
OTHER MACHINERY, TRUCKS & TRAILERS, HAYING EQUIPMENT,
SALVAGE TRUCKS, TRACTOR, & MACHINERY

See last week's Grass & Grain for more information!

SELLER: DONALD I. PFUETZE

Auction Conducted By:
CLINE REALTY & AUCTION, LLC • ONAGA, KANSAS • 785-889-4775
John E. Cline, Broker-Auctioneer • 785-532-8381
Austin Cline, Auctioneer, Frankfort, KS • 785-565-3246
www.mcclivestock.com/clinerealty



Gold merit winners were, from left: Aaron Zimmerman, Shelby Ison, Joelle Sylvester, Brittney Houck, Lori Eberspacher, Morgan Phillips and Mark Smith.



Earning Silver Merit were, from left: Ethan Sylvester, Ashley Zimmerman, Jordan Cowger, Carley Travis, Cagney Effling, Kiersten Jass, Katie Trail, KyLee Myers, Lori Eberspacher, Morgan Phillips and Mark Smith.

American Simmental Simbrah Foundation announces Gold And Silver Merit Award winners

July 15 in Des Moines, Iowa, the American Simmental Association (ASA) announced this year's Foundation Merit Award winners during the 36th Annual American Junior Simmental Association National Classic Awards banquet. Recipients of the award will also receive a recently increased

monetary prize upon the enrollment of that individual to the college of their choice. Gold Merit recipients will receive \$2,500 and Silver Merit recipients will receive \$1,250 to put toward the continuation of their education. Judging is completed by a committee and based on a combination of

factors including leadership, scholarship, extra-curricular participation and direct involvement with the beef industry.

Established in 1981, by the ASA Board of Trustees, the Merit Award program is designed to provide recognition to junior members who have made "significant contributions to their community, home, family, school and the Simmental or Simbrah breeds of cattle." As college tuition continues to increase, the Foundation continues to support AJSA members each year by giving over \$25,000 in scholarships, to help them continue their collegiate educational endeavors. All AJSA members over the age of 16 are welcome to apply; applications are due June 1, of the current year. Merit Awards are funded through donations made to the American Simmental Simbrah Foundation.

Recipients of the 2016

Silver Merit Award include the following: Jordan Cowger, Mo.; Katie Jo Trail, Neb.; Kiersten Jass, Iowa; Cagney Effling, S.D.; Ethan Sylvester, Ks.; KyLee Meyers, N.D.; Ashley Zimmerman, Wis.; Carley Travis, Ill.; Cameron Crawford, Miss.; Andrew Puchbauer, Mo.

Recipients of the 2016 Gold Merit Award include the following: Perri McGill, Okla.; Joelle Sylvester, Ks.; Shelby Ison, Ind.; Brittney Houck, Ks.; Aaron Zimmerman, Wis.

Ethan Sylvester is the son of Eldon and Julie Sylvester, from Wamego. Ethan has a passion for the welfare of cattle and advocates for producers to have a good relationship with consumers. He is active with his 4-H ambassador team and helped repair their fair-

grounds as a service project. Ethan plans to attend Kansas State University and major in Animal Science and Nutrition.

Joelle Sylvester is from Wamego, and the daughter of Eldon and Julie Sylvester. She credits participation in the AJSA Regional and National Classics for making her a stronger beef advocate. She stresses the importance of being an ambassador to the beef industry and feels passionate about clarifying the image of the industry to the public. She is a student at Kansas State University and participated on the National Champion Meat Animal Evaluation Team.

Brittney Houck is the daughter of Jeff and Lori Houck of Americus, currently attending Kansas State

University. Brittney has increased her state's junior association membership by increasing their visibility through social media. She has redesigned the Kansas Junior Simmental Association (KJSA) web page and created a Facebook page, both of which increased their online presence and resulted in more members. She has served as the president of the KJSA and has participated in the annual state Simmental show every year since the age of nine.

The American Simmental Association is headquartered in Bozeman, Montana, and maintains the breed registries for the Simmental and Simbrah breeds of cattle. ASA has an active adult and junior membership of nearly 5,000.

Prairie View FFA member wins State Proficiency Award

A member of the Prairie View FFA chapter was recognized for having one of the best career development programs in the state at the 88th Kansas FFA State Convention, June 1-3, 2016, on the Kansas State University campus.

Jackson Thayer received a State FFA Proficiency Award in Beef Production Placement during the convention for outstanding accomplishments he has made in developing programs that will prepare him for a career in agriculture. This

award is sponsored by McPherson County Feeders.

The proficiency award program recognizes students for exceptional accomplishments and excellence in a Supervised Agricultural Experience (SAE) program. The program allows students to set goals and gain real world experience in a chosen area of the agriculture industry.

Thayer works at Loma Land & Cattle for his SAE. In addition to a 400-head cow/calf operation, the company owns and operates a 600-head feedlot. Thayer has helped establish an artificial insemination program to improve herd genetics. At first, his responsibilities were basic ranch hand jobs, but now he has expanded into evaluating the cattle's health and nutritional management in the feedlot. After graduation Thayer plans to attend Kansas State University and major in agribusiness with hopes to return to the family farm.

Jackson's parents are Robert and Kristi Thayer. His advisors are Tom Schull and Tammy Bartholomew.

FREDERICKS CONSIGNMENT AUCTION

SATURDAY, SEPTEMBER 3 — 9:30 AM
1517 East 14th St., FALLS CITY, NE 68355
East on US Highway 159

TRACTORS, TRUCKS & VEHICLES, TRAILERS, GRAIN HANDLING, TELEHANDLER, COMBINE & HEAD, NURSERY TREES, LAWN & REC. MISC. EQUIPMENT, GUNS

More arriving daily

See complete listing & pictures see website:

www.fredericksauction.com

Or call: 402-245-2233

LATE CONSIGNMENTS FOR HARLEY GERDES 21ST ANNUAL LABOR DAY CONSIGNMENT AUCTION

MONDAY, SEPTEMBER 5, 2016 — 9:00 AM

LOCATED ON 75 HWY, NORTH EDGE OF LYNDON, KS (30 MILES SO. OF TOPEKA)
NO SMALL ITEMS, BE ON TIME! Tractors & Misc. Equip. lined in rows together

LATE CONSIGNMENTS:

TRACTORS 1975 WHITE 2-105, CA, 3 pt., pto, w/TA-46 loader, rebuilt AC, Good IH 1066, 3 pt., dual pto 2) 1952 FORD 8N, gas, 3 pt., pto FORD 9N, gas, 3 pt., pto OLIVER 1750, gas, 3 pt., pto, w/loader AC 200, 3 pt., pto, w/dozer blade AC 180, gas, 3 pt., pto, w/loader JD 50, n.f., gas, pto IH Cub., gas, pto MF TO-35, gas COMING FROM SAME FARM 1981 IH 1486, CA, 3 pt., dual pto, 7,695 hrs., Nice	1981 IH 986, CA, 3 pt., dual pto, 1,823 hrs. on overhaul, TA, & clutch, w/Miller M-123 loader, Clean 1974 IH 1066, CA, 3 pt., dual pto, 7,284 One Owner hrs., Good TILLAGE LANDOLL 850, 18', Finish All, Nice JD 100, 10', pull type, chisel HAY JD 346-T, sq. baler w/Farmhand Accumulator 2013 MacDon R-85, 15', disc mower conditioner, Like New LIVESTOCK JD 33, manure spreader	JD, ground drive, manure spreader Cattle squeeze chute MISC. EQUIPMENT BOBCAT 520, gas, skid loader 1999 ROADHOG, 7x26, goose-neck, car trailer JD 653-A row head JD 7200, 6x30, vac, dry fert, planter CIH 5400, 20'x15", 3 pt., drill JD 325, hydro, mower w/48" deck MISCELLANEOUS RHINO BX84, box blade BIG OX, 8', rear blade Running gear w/hoist Bish adaptor, MF to JD, dual drive
---	--	---

For complete sale bill & photos visit us at:

www.HarleyGerdesAuctions.com

Harley Gerdes AUCTIONS

We accept MASTERCARD, VISA, and DISCOVER Cards.

-AUCTIONEERS-
Harley Gerdes - Lyndon, KS
Mark Lacey - Melvern, KS
Russ Puchalla - Roca, NE
Clerk: Cindy Gerdes

Lyndon, Kansas 66451 • Office 785-828-4476 • Mobile 785-229-2369 • Fax 785-828-3428

AUCTION

SATURDAY, SEPTEMBER 3 — 10:00 AM
6006 ANDERSON, MANHATTAN, KANSAS

REAL ESTATE (SELLS APPROXIMATELY 10:30 AM)

Located close to Manhattan on a blacktop road, this home has a great view of the valley. This ranch style home has a large family/living room, kitchen, dining room, 3 bedrooms and bath on main floor. The full basement is partially finished with recreation room, 2 bedrooms and storage areas. There is a 2-car attached garage and deck on the home. There is a garage and shop building on the property. The home has central air and is on a private well with rural water nearby.

ALSO SELLING PERSONAL PROPERTY:
APPLIANCES, FURNITURE, RIDING MOWER, TOOLS, MISC.

See last week's Grass & Grain for listings!

DUANE & SHIRLEY HIGGINS

GANNON REAL ESTATE & AUCTIONS

VERN GANNON, BROKER/AUCTIONEER
785-770-0066 • MANHATTAN, KANSAS • 785-539-2316
www.gannonauctions.com

FARM TUFF

New, Remanufactured and Recycled Ag Replacement Parts

AbileneMachine
Ag Replacement Parts

Affordable & Reliable Harvest Parts

Cutting Parts

Abilene Machine Prices Blow Away the Competition

Draper Center Feeder Belts

#AXE12533 for John Deere®

625D, 630D, 635D, 640D

• 25', 30', 35' or 40'

• 55.30" x 58.01"

THEIR Price \$538 ... OUR PRICE \$310

QPOWER Belts

Toll Free: 800-255-0337 • www.AbileneMachine.com • See Us on Facebook

EQUIPMENT CONSIGNMENT AUCTION

SATURDAY, OCTOBER 1, 2016 — 10:00 AM

13900 Barton Road — LEONARDVILLE, KANSAS

We are accepting all types of Farm Machinery and Construction Equipment. Examples of items include:

- ▶ Tractors
- ▶ Combines
- ▶ Trucks
- ▶ Trailers
- ▶ Implements
- ▶ Swathers
- ▶ Grain Carts
- ▶ Livestock Equipment
- ▶ Construction Equipment
- ▶ Tools

Contact Lori Rogge at (785) 556-7162 or lori@genefrancis.com to consign your items. Lori and the rest of the staff at Gene Francis & Associates will work hard to make sure you achieve A BID ABOVE THE REST!

GENE FRANCIS & ASSOCIATES
REAL ESTATE BROKERS & AUCTIONEERS

Lori Rogge
(785) 556-7162
lori@genefrancis.com

www.genefrancis.com

Priefert and Tru-Test partner to provide Angus Convention ultimate giveaway

The list of reasons to attend the Angus Convention this November is a lengthy one.

Thousands of Angus breeders, commercial cattlemen and others are expected to attend the event scheduled for Nov. 5-7 at the Indiana Convention Center in Indianapolis, Ind. From world-class education, inspiring keynote speakers, a packed trade show and plenty of entertainment, there's much excitement surrounding the American Angus Association's premier event.

And if that wasn't enough: one lucky convention attendee on Monday, Nov. 7 will win a complete livestock management system. Priefert Manufacturing and Tru-Test scales are partnering to provide the Angus Convention's grand prize giveaway, says Becky Weishaar, director of Creative Media for Angus Media.

The system, worth \$26,700, will include the Priefert Rough Stock Open Corral System for 35 head, with sweep; Priefert 35-foot

(ft.) adjustable alley; Priefert Model S04 Squeeze Chute; and Tru-Test XR5000 Indicator, HD1010 Load Bars, scale mounting brackets and XRS2 eID Stick Reader.

"We're beyond excited to announce this prize package from Priefert and Tru-Test," said Weishaar. "This is an investment cattlemen and Angus producers can really use, and it's a huge reward to the winner. We're very thankful for the opportunity to partner with these two cattle industry leaders to provide this prize package."

With registration, all individuals will be entered for a chance to get their hands on this outstanding prize package. Participants are encouraged to register before Aug. 31 to receive the best registration price: \$75 per person.

About the Prize

Priefert's corral is designed to handle approximately 35 head and features a 135° Rough Stock Open Sweep with a 30-ft. straight working alley that leads to a Model S04 Squeeze Chute. The system is constructed

from the company's heaviest, most durable panels to ensure it can handle the roughest cattle. The layout features a single holding pen that feeds into the sweep. The 30-ft. working alley is adjustable and can be set to one of four widths to accommodate the size of cattle being worked.

With no tools required, the "no-back" Alley Stop can be easily adjusted to prevent cattle from backing out of the alley. The durable architectural-grade powder-coat finish with UV inhibitors will add years of life to the system by helping panels resist rust, scratches and fading. The Rough Stock Open Preg Panels provide operators safe and easy access to the rear of the cow for pregnancy checking or artificial insemination.

The Model S04 squeeze chute is Priefert's No. 1 selling squeeze chute and features the Model 91 headgate that works in manual or automatic mode. This system helps take some of the "work" out of working cattle, and it is designed to be "easy on the cow, easy on

the cowboy."

The eID Reader is Tru-Test's latest reader, and won't be on the market until mid- to late August. The load bars included in Tru-Test's package will allow the producer to mount the scale under the Priefert chute. Tru-Test's scale package alone is valued at nearly \$6,590.

"Priefert is excited to partner with Angus to be the major giveaway sponsor for the 2016 convention," said Courtney Dyer, director of marketing for Priefert Manufacturing. "We have steadily increased our participation with the convention each year because we see real value in the event and in the quality audience that attends. Much like Priefert, Angus producers sell a value-added product and really understand and appreciate what that means. By partnering with Tru-Test, Priefert has been able to elevate the product giveaway to a whole new level and provide a total management system for Angus producers."

The giveaway will take place at 9:30 a.m. CST on Monday, Nov. 7, and the attendee must be present to

claim the prize. Head over to angusconvention.com today and register for the convention and your chance to win.

For the best value, sign

up before Aug. 31 for full-access to convention activities, education, entertainment and meals for only \$75 per person. Registration increases to \$125 on Sept. 1.



Allyson Bilings showed the reserve champion pen of three rabbits at the Wyandotte County Fair. Her entry was purchased by Dixie Kreider.

"Saddle Up, Let's Ride" Parade kicks off Chisholm Trail 150th

The "Saddle Up, Let's Ride" Parade is the kick-off event for the Trails, Rails and Tales celebration of the 150th anniversary of the Chisholm Trail in Abilene.

The parade will begin at 10 a.m. Saturday, Sept. 3, featuring historic buggies, stagecoaches, mounted shooters, a Native American Spirit Dancer and much more.

The best place to view the parade will be along Cedar Street. At the intersection of NW 2nd and Cedar, bleachers will be set up on the east side of the intersection for a viewing area where demonstrations and musical performances will take place.

The historic parade lineup includes the Ft. Riley Commanding General's Mounted Color Guard, Abilene Municipal Band, a Native American dance demonstration, Kansas Cowboy Mounted Shooters, McPherson Silver Buckle Drill Team and an appearance from "Joseph McCoy," originator of the Abilene Cattle Trail. For the parade finale, cowboys will drive a herd of about 30 longhorn cattle along the parade route and into Old Abilene Town.

The parade route begins at the fairgrounds, taking NW 7th Street east to Cedar Street. It continues south along Cedar Street to SW 6th and across to Old Abilene Town. After the parade, festivities will continue at Old Abilene Town with

re-enactors, cowboy poets and story tellers, Western musicians and fireworks.

Parking will be prohibited along the parade route from 9 a.m. to 11:30 a.m.

For more information, or if you are interested in joining this historic parade, call 785-263-2231 or email events@abilenecityhall.com



Katelynn Martin's pen of three rabbits earned grand champion at the Wyandotte County Fair and was purchased by 7th Street Casino.

AUCTION

MONDAY, SEPTEMBER 5 — 10:00 AM
CITIZEN POTTAWATOMI COMMUNITY BUILDING
806 NISHNABE TRAIL, ROSSVILLE, KANSAS

Approximately 500 pieces of Beautiful Fenton inc. Baskets, Epergnes; Punch bowl set; Water sets; Tobacco/ginger jars; bowls; compotes; figurines; Lamps; cruets; vases; egg collection; Christmas trees; Lots of Burmese, Cranberry, Amberina, Ice Blue, coin dot, Faverene, Hanging Hearts, Hobnail, spiral optic, Carnival, coin. Many of these are artist signed including Dave Fetty, Marilyn Wagner, Kelsey Murphy, Robert Bompkamp, Nancy Fenton, Bill Fenton, George Fenton. This is truly a beautiful Auction of Quality Fenton art glass.

Many pictures on website gannonauctions.com

See last week's Grass & Grain for listings!

PRIVATE COLLECTOR DISPERSAL

GANNON REAL ESTATE & AUCTIONS

VERN GANNON, BROKER/AUCTIONEER

785-770-0066 • MANHATTAN, KANSAS • 785-539-2316



GSI

GRAIN BINS

ALL SIZES AVAILABLE

Hopper Bins Available

FINANCING AVAILABLE

Harder AG PRODUCTS

West Highway 50

PEABODY, KANSAS 66866

Phone 620-983-2158

www.grainbinsusa.com

ESTATE AUCTION

MONDAY, SEPTEMBER 5 — 10:00 AM

31943 W. 247th St. Paola, KS

GPS — use Edgerton as town instead of Paola.

TRACTOR, MACHINERY, FARM RELATED

JD 4430 cab, s/n SG 1045193R; JD 95 rear blade; Bush Hog 2615 Legend 15' bw mower; unloader mount Virnig mower & pallet forks; 10-whl rake, PT; older equip-Krause 14' disc; Krause disc w/hydr wings; IH 510 drill; JD 7000 6-r planter; Blu-Jet 9-sh ripper w/NH3 tool bar anhyd app; Hesston vibra shank w/30' hyd wings; IH 45 vibra shank, 18'; IH 540 4-btm plow; JD 4-btm plow; fr bale stinger; 3pt equip; 400gal sprayer on trlr.

Z-T MOWER, VEHICLES, TRAILERS, SHOP, SCRAP

JD 737 Z-T mower; Willy's Jeep-no title; '92 GMC PU, 6-cyl, man; '91 Topkick Chev, lift & grain sides; '87 F-700 dump truck; 60s/70s F600 truck; '97 1T Chev dually bed; trpl axle trlr w/pintle; tndm axle trlr, bp; 14' trlr; shop equip.

4-WHLR, GUNS, AMMO, OUTDOOR

'04 500 Honda Foreman; Remington 7400 .243; Remington WoodsMaster 742 30.06 Springfield; Remington GameMaster 760 .270; Ruger Air Hawk(.177 pellet); 10-gun Sentry safe; log splitter; 500gal propane tank.

PRIMITIVES & HOUSEHOLD

MIKE SHAY ESTATE • JAN SHAY, OWNER

Branden Otto, auctioneer • 913-710-7111

www.ottoauctioneering.com

Auctions! Auctions! Auctions!

Estates • Antiques • Machinery • Livestock

2,500-plus Each Year

All in GRASS & GRAIN Weekly Newspaper

A great gift for Auction Buffs!

Toll-Free: 877-537-3816

www.grassandgrain.com

HERINGTON LIVESTOCK COMMISSION CO.



CATTLE SALE EVERY WEDNESDAY: 11:30 AM

SELL HOGS 1ST & 3RD

WEDNESDAY OF EVERY MONTH

8/24/16

Steer & heifer calves sold on a steady to active market. Feeder steers & heifers sold \$3-5 lower depending on quality & condition. Cows & bulls sold steady to \$1 higher.

COWS					
Wiley, 1 blk	1365@86.00	Marion, 1 blk	1150@73.50	Wht City, 10 blk	828@140.50
Marion, 1 blk	1700@84.00	Marion, 1 blk	1295@70.50	Lncnlville, 5 blk	758@140.00
BULLS					
Marion, 1 blk	1500@83.50	Cncl Grve, 5 blk	457@162.50	Wht City, 119 blk	871@139.60
Marion, 1 blk	1745@83.50	Lst Sprngs, 1 blk	1780@101.00	Lncnlville, 11 blk	817@139.00
Marion, 1 blk	1800@82.50	Ramona, 1 blk	1835@100.50	Lncnlville, 55 blk	943@132.25
Marion, 1 blk	1535@81.50	Ramona, 1 blk	1975@100.50	Hope, 16 blk	943@131.50
Marion, 1 blk	1785@81.50	Hope, 1 bwf	2100@99.50	Tampa, 52 blk	1027@128.25
Marion, 1 blk	1400@80.50			Tampa, 50 blk	1052@128.00
		STEERS		HEIFERS	
Wiley, 1 blk	1350@79.50	Marion, 3 blk	325@176.00	Marion, 1 bwf	235@171.00
Marion, 1 blk	1535@79.00	Wht City, 5 blk	501@167.00	Lncnlville, 3 blk	557@150.00
Marion, 1 blk	1420@79.00	Ramona, 1 blk	615@155.00	Wht City, 3 blk	663@141.00
Herington, 1 bwf	1255@78.50	Lncnlville, 4 blk	455@151.00	Wht City, 5 blk	747@138.25
Marion, 1 blk	1425@78.00	Wht City, 6 blk	669@149.50	Herington, 9 blk	739@135.25
Lst Sprngs, 1 blk	1380@77.50	Lncnlville, 85 blk	769@148.50	Herington, 66 blk	825@130.85
Marion, 1 bwf	1310@77.00	Ramona, 5 blk	733@144.00		

CONSIGNMENTS FOR AUGUST 31:

- 12 mix str & hfrs, 400-600 lbs
- 18 mix str & hfrs, 500-650 lbs
- 60 mix str & hfrs, 850 lbs
- 120 blk red Angus cross strs, 850-875 lbs
- 60 blk Char cross hfrs, 825-850 lbs
- 62 Char cross blk Angus strs, 825-850 lbs
- 100 mix strs, 850-900 lbs
- 120 mix strs, 975-1025 lbs
- 120 mix strs, 850 lbs - Pending

MORE CATTLE BY SALE TIME!

Our Consignments can now be viewed after 12 Noon on Mondays by going to www.grassandgrain.com & logging onto the online Subscription.

View Our Auction Live at LMAAUCTIONS.COM

KFRM AM 550, Every Wed., 8:00 a.m. • Barn Phone 785-258-2205

Bill Mathias, Manager • 785-258-0102

Gary Suderman - 913-837-6785 • Rick Parkerson - 620-767-2738
Bob Kickhafer, Cell - 785-258-4188 • Dave Bures - 402-766-3743

202± Total Acres of Pasture, Farmland, & 15± Acre Farmstead to Sell at Auction

Monday, September 12th @ 7:00pm

Courtyard by Marriott Hotel at 3020 Riffel Dr. in Salina

202± Total Acres - 84.7± Acres of Pasture, 107.7± FSA Acres of Crop-land, & 15± Acre Farmstead with quiet, country living in the Southeast of Saline School District. Minerals Included. Will sell in 3 different tracts.

Legal Description: SW/4 & W/2W/2 of SE/4 of S31, T14S, R1W

Directions: From intersection of Magnolia & Ohio in Salina, drive East for 6-miles until you see Niles Road. Turn South and drive ½-mile until you see the subject property.

Seller: John A. & Phyllis J. Sundgren Trust



Crossroads
Auction & Realty

Curt Marshall - (785) 826-0824
Terry Zimmer - (785) 822-7780
Salina, Kansas
www.uccrossroads.com

CLASSIFIEDS

CLASSIFIED AD DEADLINE IS 10:00 A.M. FRIDAY

Although complete name, address and phone number need not appear in your ad, we must have this information for our records.

Name: _____ Phone #: _____

Address: _____ City: _____ State: _____ Zip: _____

WRITE YOUR AD HERE


RATES AND DISCOUNTS
FIGURE YOUR COST HERE:

RATE: 65¢ a word.

Number of words: _____ @ 65¢ each

Cost for one week: _____

Multiply one-week cost times number of weeks you want ad to run.

Run ad _____ consecutive weeks.

Category: _____

Cost for _____ weeks: _____

DISCOUNTS: (with cash or credit card orders only)
deduct 10% if ad runs 2 or 3 weeks;
deduct 25% if ad runs 4 weeks.

Less discounts: _____

TOTAL: \$ _____

PAY WITH (PLEASE CIRCLE ONE):

CHECK MASTERCARD VISA DISCOVER

Card No. _____ Exp. Date _____

V-Code _____ (required) last 3 digits (see sample: 567) located on the back of your credit card on the signature panel.

AUTHORIZED SIGNATURE
1234 567
NOT VALID UNLESS SIGNED

Signature: _____

CLASSIFICATIONS

CATTLE	GOAT
SWINE	SHEEP
HORSES	POULTRY
FERTILIZER	TRAILERS
FEED & SEED	MACHINERY
AUTOMOTIVE	EMPLOYMENT
REAL ESTATE	ANTIQUES
SERVICES	PASTURE
IRRIGATION	WANTED
HARVESTING	PETS
LIVESTOCK OTHER	
LIVESTOCK EQUIPMENT	
BUILDINGS-BUILDING MATERIALS	
BINS - DRYERS - VACS	
MOBILE HOMES	
SPRAY EQUIPMENT	
BUSINESS OPPORTUNITIES	
WELDING	
MISCELLANEOUS	

REMINDERS

- Please notify us of any errors at once. We cannot be responsible beyond the first insertion.
- **NO REFUNDS!**
- **BY PHONE:** Ads not accompanied by payment have \$1.00 billing charge added, and discounts are not available.


Four Ways To Place Your Ad

CALL: 877-537-3816 TOLL-FREE OR 785-539-7558

MAIL TO: AG PRESS, Box 1009, Manhattan, Kansas 66505

FAX: 785-539-2679

ONLINE: www.grassandgrain.com


CATTLE
HEREFORD BULLS


Good bulls with balanced EPD's, practical development, good disposition & eye appeal.

Oleen Cattle Co.
Falun, KS

GLENN CHUCK
785-668-2368 785-668-2454

CATTLE

Make Your Ad Stand Out From The Rest!
Place a Classified Display ad in Grass & Grain!
Your ad can include logos, photos, & different fonts!

Place an ad this size for only \$20 per week!

Run an ad of at least this size for one week between Aug. 9-Sept. 30, & get a 2nd week for 1/2 price!
Just email logos, photos, text, or questions to Kezia at: gandgclass@agpress.com
(Please mention this advertisement when placing yours!)

CATTLE


High Quality Red Angus and Charolais Bulls in Quantity!

Red Angus Sired by:
Boxed Beef, Epic, Conqueror, Sovereign, Anticipation, Mission Statement

Charolais Sired by:

All State, Bluegrass, Assertion.

- An Extremely nice set of Fall 18-month old & Spring Yearling bulls available.
- All scanned by ultrasound, fertility tested and guaranteed.
- EPD Balance and High Quality

- **Your Private Treaty Headquarters.** No Pressure, No Politics. All cattle are sold by private treaty. Come visit us and together, we'll invest the time necessary to identify the right bull(s) that best fit your program and help you gain a competitive edge.

- Short on Time - We have extensive experience with sight unseen purchases. Satisfaction guaranteed.
- Videos, data, and catalog available on our website
- Contact us for a catalog

Your Partner in Progress.

We look forward to the opportunity to EARN your business.

HARMS PLAINVIEW RANCH

Mark & Kim Harms
2528 250th Street
Lincolnton, KS 66858

Email: hprbulls@tctelco.net

www.HARMSRANCH.com

620-924-5544

Mark Cell:

620-382-6388

CATTLE

BLACK, POLLED SIMMENTAL & SIM/ANGUS BULLS

-Opening day bid off begins 9/15/2016

-Calving ease with optimum performance

-Majority ET or AI sired

-Tested for polled and coat color DNA

ROCK CREEK RANCH

Jeff Houck, Allen KS

620-344-0233 cell

www.houckrockcreekranch.com

Wheatland Farms

Yearling-18 months old Registered Angus Bulls AI Sired, Good Disposition

Larry Shippy Hope, Kansas

785-479-2103 785-479-1725

IRVINE RANCH ANNUAL PRODUCTION SALE

NOVEMBER 5th 2016 At the Ranch!

Selling:

- 50 Simmental & SimAngus Bulls

DNA Enhanced EPD's.

Calving Ease & Performance!

- 20 Fall Cow/ Calf Pairs

Registered, Young, and Productive

- 10 Spring Bred ET Heifers

www.IrvineRanchGenetics.com

Manhattan, KS



(785) 313-7473

johngirvine@sbcglobal.net

BLACK HEREFORDS

J&N Ranch

(913) 727-6446
Leavenworth, Kansas
www.blackhereford.com

CATTLE

POLLED HEREFORD BULLS

Bred for Complete Performance

- Growth
- Muscle
- Maternal
- Disposition

Fertility Tested and Guaranteed

DETTKE FARMS

Call:

ANDY DETTKE

Marysville, KS

785-268-0423

785-562-6257 Brian

BLACK ANGUS POLLED HEREFORD BULLS

Full Brothers

Volume Discounts

Large frame, low birth weight, fertility tested

- Guaranteed & Delivered •

Add meat, muscle, growth.

Heifers also available.

MIKE and BOB FEIGHT

CLYDE, KANSAS

785-614-1368

785-243-4973

785-446-3729

Bull & Female Sale

SAT., MARCH 11

2017



MILL BRAE RANCH

Mark Nikkel, Managing Partner

Maple Hill, Kansas

785-256-4327

millbraeranch.com

CATTLE

RED ANGUS GELBIEH BULLS

Full Brothers
Volume Discounts
Large frame, low birth weight, fertility tested

- Guaranteed & Delivered •

Add meat, muscle, growth.

Heifers also available.

MIKE and BOB FEIGHT

CLYDE, KANSAS

785-243-4973

785-614-1368

785-446-3729

POLLED HEREFORD BULLS

Calving ease, good growth and disposition

Semen tested, poured, vaccinated

Delivery available

785-865-3444

Flory

Polled Herefords

FLINT HILLS GELBIEH

Ron Schultz, Alma, KS

8 head of Spring born

registered Balancer heifers, all

half sisters sired by our senior

herd sire.

785-617-0033

ANGUS FALL BULLS

75 head to Select From

Plus 8 Sim-Angus Bulls

20 coming 2-year old bulls

This is a stout set of

artificially sired bulls, with

over 20 years of artificially

breeding.

Semen checked, ready to go

Nelson Angus

Raymond & Alan & Mike

Nelson

Riley, KS

785-485-2378

Alan's Cell: 785-770-7054

Mike's Cell: 785-565-8477



FOR SALE PRIVATE TREATY
18 Month and Yearling Bulls

Calving Ease • Performance
Efficient • Docile

Plan to join us
March 18, 2017
On Target Bull Sale

Dave Stump
Blue Rapids, KS
(785) 556-0124

Visit us at

SpringhillHerefords.com

A Gold TPR Breeder



"The Commercial Man's Kind"

Excellent

selection of

Polled Hereford

And

F1 Black Baldy

12-18 Months old

Bulls

Also, 2 year old Polled

Hereford Bulls

Ready to go to work for you

-Fertility Tested and Delivered-

Valek Farms

Mick: 785-732-6637

Cell: 785-527-1049

Bill: 785-527-1033

THE LAND OF



John C. Oswald & Sons

GELBIEH - BALANCERS

SPRING BULLS

Fall 2015 ET Red Angus Bulls & Heifers, Spring Cow/Calf Pairs

620-960-1189 • Ken Schmucker
Hutchinson, KS

GRASS & GRAIN DIRECTORY

All work done by Cattlemen for Cattlemen!

Cattleman's Livestock Services

Fence Building & Repair
• Corral Building
• Pasture Clearing
• Bulldozer, Backhoe Services
• Livestock Care
• Water Lines Installed
• Barn Building

785-214-9532



D. ROCHE FENCING INC.

QUALITY BUILT FENCES
DON ROCHE
785-292-4271
FRANKFORT, KS

HALDEMAN WELL DRILLING & PUMP SERVICE

785-539-9295
MANHATTAN, KS

Custom Manure
Hauling & Spreading
Big to Small Jobs!

Chore-Boyz Services
913-636-1099

Blue Valley Drilling, Inc.
Water Well Drilling & Service
Family Business Over 70 Years!
CONTACT ERIC STRADER

785-363-7353

AUCTIONEERS



BUY & SELL

Ag Equipment
Const. Equipment
& Vehicles
1.866.608.9283

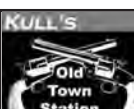
purplewave.com

GENE FRANCIS & ASSOCIATES

REAL ESTATE BROKERS & AUCTIONEERS
Serving all 105 Kansas counties with more than 30 years of experience.

Offices located in Wichita, Manhattan & Anthony.
Call us today at
316.524.8345

www.genefrancis.com
A bid above the rest!



ARMSBID.COM
Kull's Old Town Station invites consignments for our Spring, Summer & Fall Auctions. If you have 1 or 1,000, we'd like to talk to you.

We will also buy collections or individual guns.

Dan@ArmsBid.com or
785-862-8800 • 800-466-5516
Topeka, Kansas



GANNON REAL ESTATE & AUCTIONS

VERN GANNON, CAI
Broker/Auctioneer
Manhattan, Kansas 66502
785-539-2316
785-537-9003
www.gannonauctions.com
The Experienced Sound In Selling

CATTLE

Make Your Ad Stand Out From The Rest!

Place a Classified Display ad in Grass & Grain!

Your ad can include logos, photos, & different fonts! Place an ad this size for only \$20 per week!

Run an ad of at least this size for one week between Aug. 9-Sept. 30, & get a 2nd week for 1/2 price! Just email logos, photos, text, or questions to Kezia at: **gandgclass@agpress.com** (Please mention this advertisement when placing yours!)



SENECA, KS

Private Treaty
20 Month Angus Bulls
AI Sired
Registered
Calving Ease
Gentle Disposition

David J. & Doris,
Dustin & Daren Ronnebaum
785-294-1511



Available Now: 24 ANGUS BULLS

For Sale by Private Treaty

Featured Sires:
Hoover Dam, Emblazon,
Regis, Thunder, Dash & Plainsman

Performance Tested; Fertility Tested; Fully Guaranteed; Free Board til June 1; Free Delivery in KS & NE. Volume Discounts See Price List at: **www.WolfCreekAngus.com** LURAY, KANSAS **785-698-2225**

CATTLE

ANGUS & SIMMENTAL-ANGUS BULLS



- Priced for the Commercial Cattleman
- Yearlings & 2 yr. olds with calving ease & growth
- Excellent Selection with Volume Discounts
- Performance Data Available
- Good Maternal Traits

Huninghake Angus

FRANKFORT, KS
Leo Huninghake
785-292-4537
Cell: 785-556-2648

51 SPRING BRED HEIFERS.

One ranch origin from fancy Angus cows. 35 AI to GAR Advantage (15 CED), 16 bred to GAR Progress son. 30- day calving window, February 1 through March 1. Mark Spare PH: 620-635-0541



Looking for an auction bill, hay prices or farm news?

Subscribe to:

GRASS & GRAIN

Call 785-539-7558

or visit us ONLINE at

www.grassandgrain.com

CATTLE



REGISTERED ANGUS BULLS

Sired by:

Confidence, Absolute, Complement, Thunder, Cedar Ridge, Bismarck, Hoover Dam, Full Power, Substantial and many others.

- Quality in Volume - over 250 bulls sell.
- Generations of problem-solving genetics. Low to moderate birth weight bulls by high accuracy sires and out of dams backed by several generations of low BW, excellent growth and positive carcass traits.
- Your Private Treaty Headquarters. All cattle sold private treaty - no pressure, no politics. Come visit us and together, we'll invest the time necessary to identify the right bulls(s) that best fit your program and help you gain a competitive edge. No pressure, no rush decisions.
- Each bull fertility tested and guaranteed.
- All bulls scanned by ultrasound and negative for PI-BVD.
- Short on Time- We have extensive experience with sight unseen purchases. Satisfaction Guaranteed!
- Your Partner in Progress - We want the opportunity to earn your business.
- Fall 18 month old bulls and Spring Yearlings bred and managed for dependable performance with reasonable EPDs. Fed to be fit — not fat.
- Videos, Data and Catalog available on our website
- Contact us for a catalog

HARMS PLAINVIEW RANCH

Mark & Kim Harms
2528 250th Street
Lincolnton, KS 66858
Email: hprbulls@tctelco.net
www.HARMSRANCH.com
620-924-5544

Mark Cell:
620-382-6388

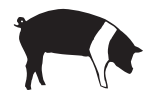
SWINE

BOARS & GILTS

Duroc, Chester, York, Hamp, & Hamp/Duroc

SLEICHTER DUROC FARM

ABILENE, KS
785-263-1898 785-479-6694



TOP QUALITY HAMP BOARS
AVAILABLE YEAR AROUND
GALEN & ROBERTA HARMS
Whitewater, KS 316-799-2382

SWINE EQUIPMENT

Buildings — Ventilation
Flooring — Feeders
Waterers — Heaters
Crates — Nursery Equip.

K & N Swine Systems
RICK HENRY
785-336-2130
SENECA, KANSAS

HORSES

BUYER FOR all types of horses. 785-556-5740.

DOES YOUR HORSE NEED A new zip code? We buy horses good, bad and ugly. Debbie and Alan Likes: 316-323-4121/ 316-323-0533

GRASS & GRAIN

Place your Classified Ad

ONLINE at:

grassandgrain.com

HORSES

MID-KANSAS HORSE SALE

All Breeds, South Hutchinson Sale Barn. Saturday, September 10th. Tack Sale Starts at 10:00am. Riding Horses Sell at 1:00pm Sharp! Loose horses sell immediately following. Accepting all Classes of Horses. We have buyers from several states for all types. We will sell the 1st 50 head of select riding Horses 100% Sound. To protect our buyers we offer a SOUND-NESS GUARANTEE! Horses will be accepted through Sale Day! 8% Commission/\$20. P.O. fee. For Early Numbers or information, Contact: Randy Smith, 620-200-7971 or the Sale Barn at 620-662-3371 Horse Sale 2nd Saturday Every Other Month!

LIVESTOCK OTHER

FOR SALE: 21 MONTH OLD pure bred Angus bull, \$3000. Call evenings 785-392-2950

LIVESTOCK EQUIPMENT

HOLD 'EM Fence Company- barbed wire, welded continuous fence, pipe, custom tubs, gates, alleyways. Cell 785-313-4552, <http://www.holdemfence.com/>

PIPE & RODS

2 7/8" \$35
2 3/8" \$30
2 3/8" Lined..... \$25
Cut posts also available
We have 4, 5, & 7" pipe
Good Clean Pipe!

Rods and Delivery available
Ask about free Semi load delivery or pick up @ our yard. DEALERS WANTED!

Ask About Our Summer Specials!
4S Land & Cattle Co. LLC
Call: 785-452-8498



Making tough jobs easier

Luco Mfg. Co
1-888-816-6707
www.lucoinc.com

Hydraulic Chutes • Working Circles • Cake Feeders
• Continuous Fencing
• Panels & Gates
• Hog Haven affordable portable confinement units
Go to **www.lucoinc.com**
PO Box 385
Strong City, Kansas 66869



Portable Corral **785-263-3436**
Introducing our New Rawhide Processor by John McDonald
Used Rawhides for sale also
www.rawhideportablecorral.com

- 4.5" Pipe \$4.00
- 2 7/8" Pipe \$1.90
- 2 3/8" Pipe \$0.95
- 1 1/4" Pipe \$0.45

WILL DELIVER
POST CUT TO ORDER
Quantity Discount
Ray's Pipe

Council Grove, Kansas
620-767-2907

FEED & SEED

PRAIRIE HAY, NET WRAPPED rounds, very clean, excellent quality. Emporia area. \$70/ton, delivery available. Call 620-343-0251

ALFALFA IN 3X3 SQUARES
185 RFV. Brome in 3x3 squares. Seneca, KS
785-336-1562

Tiffany Cattle Company- Herington is buying High moisture corn in 2016.

Please call for pricing info
785-258-3721

FEED & SEED

Spring Planting Time is Here

Native Grass and Pollinators Oats and Cover Crops
Outstanding Sorghum Forage and Alfalfa Line up
Contact Star Seed for a Dealer near you.



CLEANED RYE SEED FOR sale, bulk and mini- bulk quantities. Emporia, KS.
620-794-4293

BROME SEED, 2016 combine run. \$1.25/ lb bulk, \$1.50/ lb bagged. 785-364-6629

WANTED DAMAGED GRAIN

We pay top dollar for damaged grain. Trucks and vac's available. Immediate response anywhere.

Pruess Elevator, Inc
1-800-828-6642

BROME HAY: 450 TONS. 5x5.5 net wrapped. Some stored inside. Delivery available. \$70 a ton. Call 785-840-5430

HEDVILLE GRAIN & FEED

CATTLEMAN END OF SUMMER SPECIALS. 35% PROTEIN TUBS. (4 OR MORE) FOR \$89/TUB
Give us a call at
785-823-2401

VNS CEREAL RYE SEED \$7.50/bu. Professionally cleaned, bulk, Call or Text Jacob @ 620-437-6196

Seeman Farms Larned, KS

Carrying:
Everest, Fuller, Larned, Denali, Double Stop CL Plus, LCS Pistol
620-285-5288
OR
620-285-3471

BROME HAY, ROUND BALES put up early, \$45/ton, great calf hay. 785-449-7200

FEYH FARM SEED CO

ALMA, KANSAS
Native Grass Seed
Wildflowers
Smooth Brome Grass
Erosion Control Products
Cover Crop Seed
866-765-3415
nativeseed@feyhfarmseed.com
www.FeyhFarmSeed.com

Cattle & Hog Feed

WHEAT MIDLINGS
Pelletized, crude protein not less than 14.5%. Call for pricing.

WESTERN STAR MILL
Division of ADM - Salina, KS
1-800-649-1541 (Kansas)

DAMAGED GRAIN WANTED STATEWIDE

We buy damaged grain, any condition-wet or dry-including damaged silo corn.

TOP DOLLAR!
We have vacs and trucks.
CALL HEIDI OR GARTON

NORTHERN AG SERVICE, INC.
800-205-5751

BIG ROUND BALES OF alfalfa, protein 26, RSV 117, \$125/ton; Big round bales of clover, protein 20, RSV 124, \$115/ton. 785-633-8374

PASTURE

320 ACRES WABAUNSEE CO. many cross fences, working pens, waters, 2 wells, 20 acre pond, \$2,500/acre. Trophy hunting. Don, 785-449-7200

AUTOMOTIVE



Hutchinson, Kansas
Hillsboro, Kansas

2012 Dodge 2500 Mega Cab 4x4 Laramie, Diesel, loaded, very clean, 35k

2006 Chevy Silverado 1500 Crew 4x4 V-8, Auto, Nice, 92k

2009 GMC Sierra Set cab 2500 HD, 4x4 Diesel, Auto, Loaded, Nice 78k

2-13 GMC Sierra 3500 HD Denali Crew, 4x4, diesel, Auto, loaded, 27k

2016 Ford F-250 crew, Lariat 4x4, Diesel, Auto, Loaded, 6k

2008 Ford F-550 crew, 4x4, Dew XLT, Diesel, Auto, Bale Bed, 79k

Ask For Kris Hanschu
khanschu@midwaymotors.com
620-755-2824

107th Chapman Labor Day Sept. 3-5th C/77 CAR SHOW

See over 100 years of cars from 1911 Model T to a 2016 Dodge Charger Hellcat.

BARN QUILT TOURS
Self-guided tour of over 80 barn quilts!

Lots of activities -Tractor, Toy, Quilt Shows; Golf, 5k, ball competitions. Food & crafts.
www.chapmankans.com
Fb: Chapman Car Show; city of Chapman
PARADE TIME:
2 p.m. Monday
Chapman - The Barn Quilt City of Kansas!

'15 SILVERADO 2500 4x4, LT DBL cab, red, 6L, automatic, power driver seat, 40/20/40 bench with heated leather, dual zone AC/HT, trailer package, B/W hitch, 25k miles, \$33k ph 620-654-2661



'81 CHEVY C65 5SPD TRANS. 366 motor, 15.5' bed. '86 GMC top kick 5spd Allison automatic 18' bed, 3208 CAT motor. 913-226-4294

2006 FORD CREW CAB, diesel, 4x4, loaded, 134,000 miles, excellent shape. 785-227-2563

Myronized Truck Works Centralia, Kansas 785-857-3581

- Drop N Lock gooseneck ball
- Economy Mfg. flatbeds
- Luverne grill guards, nerf tubes, mud flaps, side steps



2008 Ford F350, diesel, with Kelly Ryan 5 x 10 feed wagon with scales. \$33,500

Several Daycabs available

Feed Mixers and

Manure Spreaders

Kuhn Knight, new & used

Belleville, KS

800-536-2293



Chisholm Trail Classic Car Show

Abilene, KS

Saturday Sept. 3

8 a.m.-4 p.m.

AWARDS 3 p.m.

\$100 to car club-most cars longhorn parade free horseback rides horse/carriage rides beer garden-50s band

DYNO TESTING

Questions?

785-280-9709

pre-register

chisholmtrailclassiccarshow.com

TO PLACE YOUR AD CALL

785-539-7558

AUTOMOTIVE

2016 Dodge Challenger
2016 Hyundai Sonata
2013 Chevy Avalanche LTZ
2013 Mini Cooper Paceman
2013 Chevy Quad Cab 4x4
2013 Dodge Avenger
2011 Chevy Aveo
2005 Chevy Crewcab Diesel 4x4
2005 Lincoln Town car
2004 Ford Expedition
2004 Chevy X-Cab
2003 Chevy S10 4x4
1994 Chevy Suburban 4x4

B. C. Motors
902 E. Trapp
Herington, KS 67449
785-258-2818

REAL ESTATE

LAND FOR SALE:

**262nd & J4 Rd
Circleville, KS
218 AC m/l**

Established grass acreage with tillable soils underneath. Cool season grasses. 8.5 acre watershed

Roger Hower
Associate Broker / Auctioneer
Kellerman Real Estate
101 West 4th Holton, KS
785-364-8272
785-364-2000

MORRIS COUNTY

PRICE ADJUSTED

White City area – 160 +- acre farm. 107 acres broke ground. Balance in brome and native grass. Stocked pond. 54x81 machine shop. Other outldgs. Beautifully updated ranch home. Over 2100 sq. ft. on main floor. Full unfinished basement. 4 spacious bdrms, 2 baths. Hardwood and Mexican tile floors. \$649,000

WHITE CITY AREA

Beautifully updated 4 bdrms 2 bath ranch home on 4 acres. Over 2100 sq. ft. on main floor. 54x81 machine shop. \$249,000.

Up to an additional 26 acres available.

DEEP CREEK AREA

This Is It! Wonderful 3 bedroom, 2 bath, 2 level home on 20 acres. Brome field, woods & creek, very private setting. Must see! \$325,000

Call Dolly Anderson, Broker
785-532-8801

dollyanderson.com
G&A REAL ESTATE
Manhattan, Kansas

HONEST, HARDWORKING
farm family seeking cropland to rent 785-447-3592 evenings. Leave message if no answer.

REAL ESTATE

FARM & RANCH

Land For Sale

Saline Co.- 28.75 Acres m/l. Southeast of Saline. New Well Drilled in 2016. Pasture w/a Pond. Chris 493-2476

Saline Co.- 130 Acres m/l. Cropland and the balance in Timber and creek. Chris 493-2476

Saline Co.- 138.25 Acres m/l. Native Grass Pasture. 1 pond. Rural Water Hook-Up. Chris, 493-2476

Ottawa Co.- 1.4 acres m/l. Wooded lot on the river. Perfect spot to fish. Chris 493-2476

Ottawa Co.- 640 acres m/l all native grass pasture, springs 5 ponds, 230th and Ivy Road. Chris 493-2476

Ottawa Co.- 480 acres m/l near Verdi with 350 acres excellent river bottom crop land and the balance in timber. Chris 493-2476

Homes For Sale

Saline Co.- 20 Acres m/l. Exquisite home w/many extravagant features. 5100 sq. ft. of Living. Barb 819-2789

Saline Co.- .64 Acres m/l. 1 1/2 story home on the edge of town. Lots of updates. Heidi 826-7962

Saline Co.- 6.67 Acres m/l. Grand 2 Story w/6000+ Sq. Ft. 5 Bdrms. Private Pond. Heidi 826-7962

Saline Co.- Manufactured Home. Eli-Saline School District. 3 Bdrms. Very Affordable. Amber 820-7472

Saline Co.- .43 Acres m/l. 3 Bdrms. 2 Baths. 1392 Sq. Ft. SES School Dist. Nancy

Ottawa Co.- 147 Acres m/l. Ranch Home. 3 Bdrms. 3 Baths. 3 Ponds. Outldg & Barn. Chris 493-2476822-1960

Ottawa Co.- 4.36 Acres m/l. 4000+ Sq. Ft. Home Walk Out Basement. 5 Bdrms./6 Baths. Amber 820-7472

Ottawa Co.- 4.6 Acres m/l. Updated 2 Story Home. 5 Bdrms. 1 Car Garage. Vicki 452-8177

Farm & Ranch Division Of:

COLDWELL BANKER

**Antrim-Piper
Wenger Realtors®**
631 E Crawford Salina KS
www.cbsalina.com
1-800-276-3641

© 2008 Coldwell Banker Real Estate LLC. All Rights Reserved. Coldwell Banker® is a registered trademark, licensed to Coldwell Banker Real Estate LLC. An Equal Opportunity Company. Equal Housing Opportunity.

GRASS & GRAIN

Place your Classified Ad
ONLINE at:
grassandgrain.com

REAL ESTATE

FOR RENT OAKHILL ESTATES

LUXURY 1 & 2 BDRM APTS.

Private Balconies and Patios
Woodburning Fireplace
Ceiling Fans
Gas Heat/AC
Exclusive area in Wamego

1-888-537-9064

TRAILERS

ELITE



- Experience the ELITE Difference
- Optional W.E.R.M Flooring

TITAN HUSKER HARVEST SPECIALS

**Save up to \$800 on
2016 Titan Stock**

**Trailers, Flatbeds, &
Titan West OK Corrals.**

Your Trailer Super Store!

Mid-Plains Equipment

E. Hwy 30 & 10, PO Box 2526
Kearney, NE 68848

308-237-5810

www.midplainsonline.com

BOB'S TRAILER SALES

Pomona, Kansas

785-418-2227

Kevin:

785-241-4706

www.bobstrailersales.com

- 2016 Travalum 24' goose-neck\$13,980
- 2016 Travalum 24', aluminum Gooseneck.....\$14,200
- 2016 Circle D 24' stock trailer.\$8,775

- 2016 Circle D half nose stock trailer, loaded 24'\$9,500
- 2016 Elite 30' 10k axles Gooseneck flatbed.....\$7,500

- 2016 Elite 25', 2-7k axles Gooseneck flatbed\$5,400
- 2016 Elite 25' 10k axles Gooseneck flatbed\$6,950

- 2016 Elite 32' 10k axles Gooseneck flatbed\$7,800
- 2016 Travalum Aluminum Trailer 24x7 6, loaded.\$15,700

- 2016 Travelong Advantage 24x6 8\$9680

TRAVALONG TRAILERS

New steel & alum. stock
New 20' to 31' flatbed
Used 18', 22' stock- 14' dump
Used 3 horse GN- slant
2 used 14' GN flatbed

VISSER TRAILER SALES

Herington, KS • 785-258-2800

2014 KAUFMAN 24' ALL metal tilt bed trailer, used once. 785-227-2563

Trailers 4 U

785-292-4166

Frankfort, KS

MERRITT TRAVALONG

www.trailers4u.com



Your Local Dealer for:
TravAlong, P.J. Hillsboro,
Sharp, Titan West, Hayliner,
and Bradford Built.

**Hail sale:
\$1,500 off Hillsboro.
\$500 off Travalum.**

Rocking "M" Trailer Sales

430 S. Colorado

Waterville, KS 66548

Office: 1-866-261-2526

Shawn: 785-562-6614

Kelsie: 785-313-3233

www.rockingmtrailers.com

TRAILERS

Make Your Ad Stand Out From The Rest!

*Place a Classified Display
ad in Grass & Grain!*

*Your ad can include logos,
photos, & different fonts!*

**Place an ad this size for
only \$20 per week!**

*Run an ad of at least this size for
one week between Aug. 9-Sept. 30,
& get a 2nd week for 1/2 price!
Just email logos, photos,
text, or questions to Kezia at:
gandgclass@agpress.com
(Please mention this advertisement
when placing yours!)*



DONAHUE!
1-800-457-7406
www.donahuetrailers.com

HILLSBORO

DOOLITTLE

Endura aluminum stocks,
steel and aluminum utilities,
tilts, equip, dump, enclosed,
and deck over trailers

AUSTIN TRAILERS LLC

2560 Pillsbury Dr.

Manhattan, Kansas

785-539-3925

CIRCLE D

LIVESTOCK & HORSE TRAILERS

FLATBED TRAILERS

• 1-800-526-0939 •

www.circle-dtrailers.com

1998 36' DMF HOPPER bottom,
steel grain trailer, spring, new
tires, shedded, above average,
one owner-retired, \$13,500.
785-741-5360

TITAN



**NEW STOCK, HORSE,
FLATBED, &
UTILITY TRAILERS**

TRAILER REPAIR BRAKES, LIGHTS, SAND BLAST, PAINT WELD

We Install Brake Controllers USED TRAILERS

Stockman 16' BH stock.\$1,800
'77 Homebuilt 33' GN Contractor trailer\$4,600
'02 Buck Dandy 20' BH Utility . . . \$3,300

'13 Land Pride FDR1660, like new\$1,800

'13 Diamond C 20' GN utility ... \$4,500

Blue Valley Trailers

225 South East St.

Waterville, Kansas 66548

785-363-2224

1-866-368-4826



MACHINERY

FOR SALE: 8 X 41 Westfield PTO Auger, 8 x 54 Hutch/ Mayrath PTO Auger; good condition. 2250 Calumet Vacuum Manure Wagon, excellent condition. Tandem axle running gear, good condition. Call 785-747-8246

PLANTER SALVAGE

IH 800-900-950-955 Cyclo JD 494-1280, 7000-7300, plate and plateless White 5100

Koelzer Repair

Onaga, KS 785-857-3257

1570 CASE TRACTOR w/duals, good, \$5,500. Also, Massey 63C 6rw corn head, good, \$850. Also, 850 Massey combine for salvage, \$500. 785-418-5746

MACHINERY

SALVAGE COMBINES

ALLIS N7-6, L2, L, M, G, F2, F, CII, All; JD 8820, 7720, 7700, 6600, 4400, 3300, 105, 95, 55; MF 860, 760, 750, 510, 410; IH 1680, 1480, 1460, 915, 815, 715, 503, 403; NH TR70-85, 1400, 995, 985, 975.

SALVAGE TRACTORS

ALLIS 7000-7080, 220, 210, 190XT; D17-19; JD 84-8630, 7520, 6030, 5020, 4630, 4430, 4020, 3020, 720, 730; CASE 1470, 1370, 1270, 1200, 1070, 930, 400; IH 1568, 1466, 1256, 1066, 1026, 806; FORD 4-5-6-8-9000; MF 2745, 1155, 1100, 90, 85; OLIVER 2150; MM G1000; WH2-150, 4-150.

Mike's Equipment

BUHLER, KANSAS

1-800-543-2535

IN THE SANDBOX

785-456-3336

**5625 Lake Elbo Rd
Manhattan, KS**

- 763 Bobcat, 1900 hours, good rubber, good bucket, serviced, nice\$13,500
- L220 cab/ heat/ AC 2 speed dual controls, stereo, new rubber, H. flow.....\$28,000

- 2008 1 ton 4 door, 200,000 actual miles, Knapheide bed like new\$13,500
- 2008 Chevy Impala, loaded, 4 door, nice car good rubber, 19,000 miles\$12,500

- 1995 Chevy 3/4 4x4 restored reg cab Hillsboro aluminum bed 350 V8 auto, loaded.....\$9,500
- 2005 VIP Vegas open bow 19' boat, like new, V.6 4.3 red/white\$9,975

- New buckets, used skidsteer attachments
- New pallet forks, 5,000 lbs 48" tines.....\$650

- 18' Trailon 5000 axles foldup ramps, Dove tail.....\$2,600
- 2003 Mastercraft 209, 300 hrs.....\$26,000

- 1984 Hurst olds lighting rods, ... \$15,000
- L220 NH skidsteer, 600 hrs, loaded\$28,000

- All skid steer attachments .Call
- 18' skid steer trailer, fold up ramps, new rubber.....\$2,800

- 2012 Fiat 500, 70K, nice car, loaded\$8,800
- 2005 V.P 20 ft. boat, like new.. \$10,500

- New grapple buckets\$2,000
- New pallet forks, 5000 lbs\$650



AbileneMachine
Ag Replacement Parts

With 5 locations,
Abilene Machine is one of the
largest distributors of new,
remanufactured and recycled
ag replacement parts in the
United States.



800-255-0337

www.AbileneMachine.com

TRIDEKAN GRAIN BAG unloader. Call Ottawa Feed Lot for more information. 785-392-2184

FOR RENT: JD 6 row corn heads. Have IH adapters available. 785-456-5093.

FOR SALE: 2-13.6x 38 tires & tubes, 1 Firestone Field & Road, 1 Goodyear Dynatorque 95% Choice. \$300 each. 785-336-1010

FORAGE DUMP WAGON GT 4000 \$2500, Grain Dryer GT 570 \$3000, International single row side rake, \$1000, 300 gallon polyurethane tank on stand for herbicide \$400. Call 785 767-3650

TAKING SEALED BIDS UNTIL

Sept. 10th 2016 on a 4010 J. Deere tractor with GB Loader. Can be seen at Farmers Coop Elevator in Morganville, Ks. 67468, P.O Box 108.

Coop can refuse any and all bids.

MACHINERY

USED TRACTORS

'08 Case IH Maxxum 125 MFD w/loader. 2110 hrs

'97 Case IH MX120 MFD w/loader, 4080 hrs

'95 Case IH 7240, MFD, 4390 hrs

'41 IH FarmAll A w/Woods belly mower

MISCELLANEOUS

'15 Sunflower 6631 VT 27'

'13 CASE IH DC132 disk MOCO

2010 Vermeer WR22 10 wheel rake

'10 CASE IM 1250 planter

12/30 Bulk fill

Case IH 183 12 row 30 folding cultivator

Bush Hog 3126 rotary mower new blades

'07 Case IH RMX340 25'

'09 Case IH 330 turbo 25'

2 Case IH 4300 FC 26' and 33'

IH 4500 F.C. 18.5'

Case IH 6500 conser til chisel 14'

Sunflower 1433 25' disk

IH 470 disk 14'

IH 55 chisel 7' trailing

IH 9' chisel

'96 JD 9500, 4WD, 3275 eng., 2205 sep.

'96 JD 920 flexhead

'91 JD 653A row head

'89 JD 643 cornhead

'98 CASE IH 2366 4WD 2220 hrs. eng.,1550 hrs. sep.

MACHINERY

Vermeer

604 & 605 N balers
6640/6650 Rancher baler
R2300, R2800 twin rake
BPX 9000 processor
VR1022/1224 wheel rake
TM700, TM800 trailed mower
Disc Mowers & Mower Cond.
USED VERMEER BALERS
Hydra-Bed™ & accessories
Winkel Livestock Equip.
Winkel Flatbeds
Bar 6 Cake Feeders
Dixie Chopper Lawn Mowers

MILLER RANCH EQUIPMENT
33778 K-99 Hwy.
Alma, Kansas
785-765-3588
www.millerrancheequipment.com

'95 JD 9500, EXCELLENT Condition, shedded, 3000 hrs., chopper and chaff spreader \$28,000. 316-708-0888

Vermeer

NEW

- 604-605N net
- 6640 net ramp
- R2300 & R2800 rakes
- TM800 & TM850 disc mowers
- VR1022 & VR1224 wheel rakes
- TM1400 Trail 18' disc mowers

Please check our website, www.sloophook.com or give us a call at 785-828-4706 to view all of our New and Used Equipment

MacDon

- M205 with 16' disc head

Sloop Sales & Hook's Repair, Inc.
Lyndon, KS 66451

COBEY FORAGE WAGONS, 16', metal boxes, roofs, excellent condition, 11Lx15" tires, \$1000 each. 913-360-2907

LEXION 470R COMBINE WITH 30' flex head, 2577 separator hrs., good condition, PRWD, \$48,000. 913-927-3764

Allis Chalmers Tractors
180 GAF Cab Loader....\$6,500
200D, 7020 loaders...\$8,500ea
7000D, 7050D cabs...\$8,500ea
7040 CAH PST\$7,500
Seneca, KS • 785-336-3158

— **ITEMS FOR SALE** —
ONE OF THE BIGGEST SELECTIONS OF ROW CROP CULTIVATORS IN KANSAS ..
.....CALL
2004 JD 9220 Tractor ..\$60,000
2008 JD 7330 TractorPQ-
left hand reverse new KMW
loader\$60,000
Ford 7740 tractor w/Koyer 500
loader\$8,000
Minn. Moline G1000/dozer blade
.....CALL
2004 CIH MXM 120 tractor
.....\$25,000
1980 CIH 2090 Tractor ...CALL
2009 Gleaner R76 Combine ...
.....\$120,000
2004 AgCo flex 30' w/air reel
.....\$13,000
2009 MacDon draper 40' flex
.....CALL
2000 JD 930R Rigid Head
.....\$8,500
2001 JD 930F Flex head .99,000
2004 JD 630F Flex head .99,000
1990 JD 853A rowhead \$14,000
JD 853A Row head ...\$10,000
2004 CIH 1020 Flex 30' w/air
reelCALL
2004 CIH 1020 flex head .77,000
Several CIH 1020 flexheads in
stockCALL
2002 CIH 2208 Cornhead 8R30
.....CALL
2010 CIH 2152 Draper 45'
.....\$29,000
Deutz-Allis Cornhead 8R30
.....\$4,000
2009 JD 608C Cornhead .CALL
Several JD 893 Cornheads in
stockCALL
JD 500 Graincart\$4,500
Dakon 250 gravity wagon \$1,200
Vermeer R2300 hyd. rake
.....\$11,500
2009 JD 568 Rd. baler .99,500
Maxilator MMG100 Bale fork ...
.....\$3,250

MACHINERY

NEW EQUIPMENT
R2300 rake
VR1224
BPX 9000 Bale Processor
TE170 Tedder
MC 3700

USED EQUIPMENT
605G baler
605M baler
R2800 rake
M850 Mower Demo
3 pt tree shear

BERG REPAIR

Vermeer **WINKEL**

DEWEZE

14200 Godlove Rd.
Westmoreland, KS
785.457.3534

JD CORNHEADS 4-643's
3-693's, 2-843's, 4-893's, all are very good heads, most have CM and most '90 series have hydraulic deck plates. Price range \$3,500-\$14,500. Would consider trade. 620-767-5928, 785-466-6019

30- Gleaner heads
Corn, Flex, Rigid.
Majority reconditioned 86 L3
Chopper, Big engine,
Header Trailers for sale.

*Custom Harvesting Wanted
Corn, Milo, Soybeans, etc*

**Duffek Implement
& Harvesting**
Seward, NE
402-643-3290

FORD TRACTORS & EQUIP.

- Ford TV-20 excellent cond.
- 9000 w/ hi Lift G.B. loader
- 5000 Flat deck
- 5600 w/factory cab
- 2000 diesel, new paint
- 2000 gas
- NAA (Jubilee's) - 2
- 8N & 9N's (several)
- 800 w/loader
- 2 & 3 bottom 3 pt plows
- 2- 3 pt discs
- Used 3 pt blades & scoops
- Used 3 pt planters & cultivators
- 10' Ezy-Flow
- New Holland 165 manure spreader
- M-M manure spreader, ground drive, shedded, like new

**Meinhardt Farm
Equipment, LLC**
www.meinhardttequip.com
East end of KanEquip's lot
Wamego, KS
Museum open by luck or
appointment
785-456-4045

Schuler Feed Wagon ...\$1,000
2010 Kuhn 5156T vert. mixer ...
.....\$15,000
Farmhand 6650 Tubgrinder ...
.....\$8,500
CIH 496 Disc-21' w/harrow
.....\$6,000
SF 1433 Disc 25'\$10,000
Quinstar Follow Master ..CALL
Agri-Product Ripper 7sh ..\$2,200
JD 2600 5 btm plow ...\$2,000
White 5 btm. plow,\$1,500
Orthman 9300 Cultivator 8R-W ..
.....\$9,000
JD 886 cultivator 8 rw, ..CALL
Blu Jet II 7 shank,\$6,200
JD 120 Flail Shredder ...\$5,500
2009 JD 1750 Planter ..\$19,500
JD 750 drill 15' 10" spacing
.....\$12,500
JD 7000 planter 8x30 ..CALL
2001 JD 1560 NT drill, 7.5
spacingCALL
GP 2N-2410 DrillCALL
JD 8200 Drill, sharp\$3,500
Tree Shearer\$2,750
Rhino SR20M-20 Batwing
mower,\$7,500
JD dozer blade,\$1,400
Wemco header trailer 32 & 35 ft.
NEWCALL
Complete listing on our web:
www.jonesmachineryinc.com

BUY/SELL/TRADE DAILY
Smith Center, KS
785-282-3000
785-282-0432 Cell
785-686-4005
Evening Calls Welcome

JONES
MACHINERY, INC.

MACHINERY

WE ARE DEALERS FOR

GEHL
BUSH HOG

**Kelly-Ryan-
Kewanee - Westendorf
C.E. Attachments
H&S**

Just In
**10', 12', 14', 16',
18', & 20' GATES
CORRAL PANELS**

8' corral panels.....\$60.00
10' corral panels.....\$70.00
12' corral panels.....\$80.00
14' corral panels.....\$90.00
16' corral panels.....\$100.00
HD Round Bale Feeders\$250

**SKID LOADERS
& ATTACHMENTS**
New Gehl R260 skid loader
New Gehl V330 skid loader
New Gehl RT210 track ldr.
Used Gehl 5240
2012 Gehl 5640 E skid loader
Gehl CTL 70 Cab Encloser
2013 Case, SV250 fully
equipped, 1500 hrs
Worksaver walk thru pallet
forks 48'\$800
CEA high dump 8' bucket
Haugen bale grapple bucket
New 12", 16" M&M tree shears
New CEA pallet forks
New CEA tooth bars
New Mensch, manure scrprs
New Danuser and Lowe post
hole diggers, skid loader
mounts\$2,500
New brush grapples
New Bale Spears for big
rounds and square.....\$650

NEW EQUIPMENT
Enorossi 12 14 wheel hayrakes
Meyer's manure 350 sprds.....
.....\$15,000
Cimmaron 6', 7', & 10' 3 pt. ro-
tary mowers
H&S GM170 grinder mixer
Bushog 1815 flex wing mower

USED EQUIPMENT
Gehl 120 MX grinder/mixer
Vermeer R23A rake. Twin
parallel bar
1999 NH TV140 bi-directional,
w/ 7614 loader, 2700 hrs
2009 JD 620I Gator w/cab en-
closure
Kuhn 8132 manure spreader
GB 660 loader CIH 5100 se-
ries Maxum tractors
Dual 800 loader
Leon Loader w/AC 7000 series
mounts

SENECA IMPL.CO.
Hwy. 36 West
SENECA, KANSAS
Day ...785-336-2621
Night.....785-336-2502

160 MF MANURE SPREADER, \$1,000 OBO. 670 JD 9' rake, \$1,950 OBO. 536 JD square baler, used very little, always shedded, \$4,250 OBO. JD 350 9' sickle mower, belt drive, \$1,950 OBO. 785-348-5422

— **PLANTERS/DRILLS** —
'94 JD 750\$15,950
'08 JD 1750 8/30 ...\$24,500
'01 JD 1770 16-30" ..\$29,500
'08 JD 1770 24-30" ..\$64,500
'08 JD 1770 16-30" ..\$55,000
'07 JD 1770 16-30" ..\$51,500
'11 JD 1770 12/30" LF \$69,500
'14 JD 1790 16/32 ..\$120,000
'07 JD 1790 24/20 ..\$69,500
'10 JD 1790 16/31 ..\$82,500
'12 JD 1790 16/31 ..\$96,500
'04 JD 1790 16/31 ..\$39,750
'09 Kinze 3660 16/31 ..\$49,500
'15 Kinze 4900 16-30" \$119,500
'14 Kinze 3660 16/31 ..\$96,000

— **COMBINES** —
'13 JD S690\$275,000
'14 JD S680\$281,500
'13 JD S680\$275,000
'14 JD S670, 4WD ..\$225,000
'13 JD S670\$225,000
'12 JD S670 4WD ..\$195,000
'12 JD S660\$210,000
'09 JD 9770\$121,500
'08 JD 9770 Hillco ..\$137,500
'08 JD 9670 4WD ..\$99,500
'11 JD 9670\$155,000
'07 JD 9660 Hillco ..\$114,500
'05 JD 9660\$68,000
'04 JD 9560 SH\$95,500
'13 CAT 760\$265,000
'06 CAT 570R\$74,950
'11 CIH 5088\$159,500
'97 CIH 2188\$39,500
32 corn heads
24 flex heads

— **SPRAYERS & APPL.** —
'14 JD 4940 Dry Box \$197,500
'10 JD 4630\$124,500
'09 Spray Coupe 4460\$66,000
'99 RoGator 554 ...\$39,500
'12 New Leader 345 ..\$99,500

— **TRACTORS** —
'12 JD 9560RT\$244,500

MACHINERY

— **USED IMPLEMENT** —
1981 Hesston 1580 2WD tractor
Gehl 1870 rd. baler
2014 Gleaner S77 combine
Hesston 946 rd. baler
2013 Gleaner S-77
1998 Gleaner R72
Gleaner 8200 25' flex w/air
reel
Gleaner 8200 30' w/air reel
Gleaner 800 30' flexhead
Gleaner 400 30' rigid
2003 MF 9690 w/30' head

**AGCO ALLIS
WHITE EQUIP.
GLEANER
HESSTON
MF • GEHL
DIXON**

Kuhlman Impl.
LINN, KANSAS
785-348-5547

OUR 64th YEAR

NEW TRACTORS
2016 JD 6155M
2016 JD 6155R

USED TRACTORS
2014 JD 8370R
2012 JD 8360R
2012 JD 8335R
2011 JD 8335R
2005 JD 8220
2009 JD 7930
2014 JD 6140R
2011 Case IH Mag 225

USED PLANTERS
2015 JD 1795, 16/31
2014 JD 1790, 16/31
2013 JD 1770 NT 16 row
2005 JD 1760 12 row
2013 JD 1750, 6 row

COMBINES
2015 JD S670
2014 JD S660
2012 JD S660
2011 JD 9770
2014 JD 608C
2011 JD 608C
2010 JD 608C
2014 JD 625F

**NEW EQUIPMENT
SPECIALS**
2013 JD 2623 disk
BBK Header Trailers

USED EQUIPMENT
2015 JD 2510H, Dry 16 row
2011 JD 568 baler
2008 JD 568 baler

**SOLID — STABLE
STILL JD**

**TODD TRACTOR
COMPANY INC**
785-336-2138 Days
785-548-5855 Nights
Visit Us At
toddtractor.com
Seneca, Kansas

FROM ESTATE, 1999 9610, only 2,669 hours, just recondi-
tioned. Very, very nice. \$69,500.
785-452-5685 or 785-227-2578

FOR SALE: LANDPRIDE 15ft
shredder. 540 pto \$3800
785-541-0630

'12 JD 9460 4WD ..\$209,500
'97 JD 9400 4WD ..\$59,500
'04 JD 9420\$116,500
'11 JD 8360R\$212,500
'11 JD 8310R\$169,500
'11 JD 8335 MFWD ..\$189,500
'01 JD 8310\$97,650
'04 JD 7920\$76,800
'03 JD 7810\$59,500
'83 JD 4850 MFWD ..\$39,500
'15 JD 6140M\$89,500
'14 JD 6125M\$97,500
'85 JD 4050\$24,900
'15 NH T8 435\$249,500

— **TILLAGE** —
'12 JD 2100 5 shank ..\$10,500
'05 JD 512 22 1/2' ..\$29,500
Peripheral 5 shank ...\$5,450
'08 CIH 730B shank ..\$11,900
'13 JD 2623VT 29' ..\$50,000
'11 CIH 330 34' VT ...\$32,500
'06 SF 1444 40'\$38,500
'11 CIH 370 30'\$39,000

— **HAY EQUIPMENT** —
'07 JD 568\$19,500
'05 Gehl 2880\$6,500
'95 NH 660\$3,950
Highline hay trailer ...\$5,950

— **SKID STEERS** —
'13 CIH SV300\$39,500
785-742-7121
HIAWATHA, KS 66434
www.hiawathaimplement.com

**Hiawatha
IMPLEMENT**

MACHINERY

JD 785 MANURE SPREADER
\$6200 785-336-2427

WHITE STAR

**WE RENT TREE SHEARS!
BOBCATS - TRADE-INS**

2015 Bobcat S590 A71, 75
hrs.....\$39,500
2014 Bobcat S570 A71 TS,
175 hrs.....\$32,000
2014 Bobcat S590 A71 TS
SJC, 75 hrs.....\$39,500
2014 Bobcat S750 A91 TS
180 hrs.....\$44,000
2014 Bobcat S530, cab &
heat, 275 hrs.....\$34,500
2013 Bobcat S630 A71TS,
375 hrs.....\$33,000
2012 Bobcat S650 A71, 1250
hrs.....\$37,000

**Service on all
Bobcat Equipment
Stop by and talk to us.**

Now Is The Time To Trade

**ALL MACHINES INSPECTED
& READY TO WORK.**

Bobcat

**3695 Green Valley Road
Manhattan, KS 66502**
For More Details Call
Greg • 785-215-4285
Travis • 785-410-8985
Office • 785-537-9979

**Case & IH
Tractor Salvage**

Case 300's thru 2096
IH 460's thru 5488
Over 1000 Tractors on shelf
New & Rebuilt parts for all
brands of tractors & combines

Want to buy
Case & IH salvage tractors
Elmer's Repair
CENTRALIA, KS
785-857-3248
www.elmersrepair.com

NEW GALVANIZED Culverts,
various sizes and lengths.
785-979-2411

1995 CASE IH 7250, 5850 hrs.
\$61,000; 1970 Case 970 demo
\$6500; 1968 Case 1030. \$4500
785-250-8693

JD 122 CHUCK WAGON WITH
1065 running gears, \$2700;
Gehl 99 forage blower, \$300.
785-336-2427

RICHARDTON SILAGE HIGH
dumps: 700 series, \$4,400.
1200 series, \$1,300. Salvage
parts for JD 3960 and 3970
choppers. Roeder Implement,
Seneca, KS 785-336-6103

2014 DRAGO SERIES 2, 8X30
corn head, head sight, case IH
mounts, \$48,000; Great Plains
26' grain drill, 7.5" spacing, li-
quid fertilizer. \$20,500. Hull 36'
header trailer. 785-562-6456 or
785-562-6504

BRUNA IMPL. CO.
COMBINES:
2013 Case IH 8230, 1019 hrs..
.....\$255,000 (C)
2009 Case IH 8120 4WD, 2218
hrs.....\$171,000 (C)
2013 Case IH 7230 4WD, 890
hrs.....\$285,000 (H)
2012 Case IH 7130, 1203 hrs..
.....\$182,500 (S)
2011 Case IH 7088, 1718 hrs..
.....\$155,000 (W)
2014 Case IH 6140, 522 hrs..
.....\$225,000 (M)
2010 Case IH 5088, 1206 hrs..
.....\$165,000 (W)
2006 Case IH 2388, 2461 hrs..
.....\$97,500 (M)
2003 Case IH 2388, 3261 hrs..
.....\$84,000 (W)
1998 Case IH 2388, 4653 hrs..
.....\$55,000 (W)
1995 Case IH 2188 4WD, 6439
hrs.....\$38,000 (H)
1993 Case IH 1688, 3981 hrs..
.....\$29,500 (C)
1991 Case IH 1680, 4663 hrs..
.....\$19,500 (C)
2004 JD 9560 STS, 2697 hrs..
.....\$91,500 (S)
2012 JD S670, 1425.....
.....\$189,500 (H)

HEADERS:
2012 Case IH 2162 35' draper..
.....\$52,500 (C)
2012 Case IH 2162 30' draper..
.....\$56,000 (H)
2013 JD 635FD 35' draper.....
.....\$65,000 (S)
2005 Case IH 1020 30' flex.....
.....\$15,500 (W)
2001 Case IH 1020 25' flex.....
.....\$14,500 (C)
1998 Case IH 1020 22.5' flex...

MACHINERY

**Make Your Ad Stand
Out From The Rest!**
**Place a Classified Display
ad in Grass & Grain!**
*Your ad can include logos,
photos, & different fonts!*
**Place an ad this size for
only \$20 per week!**
*Run an ad of at least this size for
one week between Aug. 9-Sept. 30,
& get a 2nd week for 1/2 price!*
**Just email logos, photos,
text, or questions to Kezia at:
gandgclass@agpress.com**
*(Please mention this advertisement
when placing yours!)*

**NEW VERSALTILE
DEALERS
USED FORAGE
HARVESTERS & HEADS**

'11 Claas 960.....Coming
'10 Claas 980.....Coming
'09 Claas 980
'05 Claas 900.....Call
'04 Claas 900.....Call
Claas RU600, 8 row head.....
.....From \$30,000

TRACTORS
2012 Case 315.....\$190,000
Agco Star 8360.....\$45,000

COMBINES
**0% For 5 years on all
62 & 72 Series combines**
'13 Gleaner S67
'12 Gleaner S77
'12 Gleaner S67
'11 Gleaner S67
(2) '10 Gleaner R76
'05 Gleaner R75.....\$120,000
'02 Gleaner R72.....\$85,000
'99 Gleaner R72.....\$75,000
'95 Gleaner R72
'98 Gleaner R62.....\$67,500
(2) '97 Gleaner R62 ...\$45,000
'94 Gleaner R62.....\$40,000
'13 3000 12R30.....\$55,000
'11 3000 12R30.....\$50,000

MISCELLANEOUS
Sunflower Tillage equipment...
.....Coming in daily

**ALLIS
WHITE
HESSTON**

**MASSEY FERGUSON
Kalvesta Impl.
Company, Inc.**
620-855-3567
KALVESTA, KS 67856
www.kalvestaimplement.com

2013 CASE IH MAXXUM 125:
550 Hrs. 16 speed powershift, 3
remotes, joy stick, front weights,
540/1000 PTO, Cab AC/ Heat,
fender controls. 785-258-0337

SALVAGING COMBINES
N5, N7, L, L2, M, F, G, C, CII,
All, A&E, K Gleaner. 6620,
7720, 8820, 7700, 6600, 4400,
3300, 105, 95, 55, JD. 915,
1480, 1460, 1420, 815 IHC.
860, 760, 750, 510, 410, 300
Massey. Several black and or-
ange Gleaner cornheads.

Jack Boyle
Vermillion
785-382-6848 785-564-0511

.....\$13,500 (S)
2011 Case IH 3020 30' flex.....
.....\$23,500 (W)
2011 Case IH 3020 25' flex.....
.....\$22,500 (C)
2004 JD 630F 30' flex.....
.....\$10,000 (M)
1996 Case IH 1063 6RN.....
.....\$11,500 (M)
1996 Case IH 1083 8RN.....
.....\$13,750 (H)
2005 Case IH 2208 8RN.....
.....\$26,500 (M)
2001 Case IH 2212 12RN.....
.....\$26,500 (W)
2010 Case IH 3408 8RN.....
.....\$36,500 (S)
2012 Case IH 3412 12RN.....
.....\$53,500 (W)
2011 Case IH 3416 16RN.....
.....\$74,500 (C)
2014 Drago 1230 12RN.....
.....\$64,000 (H)
2011 Geringhoff NS830 8RN...
.....\$36,500 (H)
2007 Greinghoff 1230 12RN....
.....\$39,000 (W)

Bruna Impl. Co.
C - Clay Center: 785-632-5621
H - Hiawatha: 785-742-2261
M - Marysville: 785-562-5304
S - Seneca: 785-336-2111
W - Washington: 785-325-2232

List of our entire
used inventory on:
www.brunaimplementco.com

CASE IH
AGRICULTURE

MACHINERY

Case IH 6500 Disc Chisel
.....\$4,000
JD 310 12' Disc.....\$2,500
Hutchmaster 14' Offset Disc.....
.....\$3,000
Several Gravity Wagons ...Call
Farmhand 945 XL Loader
with JD mounts\$2500
Rhino SE15-4 Rotary Cutter.....
.....\$5,500
IH 490 Disc.....\$3500
Westindorf W2-42 loader, JD
mounts.....\$2500
C-IH 8480 Baler.....\$2250
Woods 315 Mower\$2000
MF 1163 Cornhead\$1950
E2 Trail 500 Grain Cart
.....\$3500
UFT 500 Bar Cart.....\$3000

**Mellenbruch
Machinery**

Soldier, Kansas
www.mellenbruchmachinery.com
785-834-2541
Cell: 785-305-0234

TIRE TOWN INC.

18.4-34 new, 10p\$575
11L-15 rib 12p, new\$90
800/70R38, 80%\$1,500
16.5L-16.1, 10p, new\$235
20, 8-38, 10p, new\$760
18.4R46, new\$1,450

**Nationwide Shipping
WE DEAL
Other Sizes and Prices
New & Used**

800-444-7209 800-451-9864
913-441-4500 913-682-3201

JD 303 CORN HEAD, shedded
620-366-1936

MACHINERY



NEW

Balers: 605N, 504N, 665
Rancher
Rakes: VR1428, VR1224
BPX9000 Bale processor

USED

4 604SM, 1 605M, 1 665
Rancher, 1 504N, 1 605K
2 R2800 twin rakes, 1 R2300,
1 VR1428, 2 VR 1224

**LARGER BALE FORKS
SPRING STEEL AVAILABLE
METAL**

**ROUND SQUARE TUBING
ANGLE CHANNEL & FLAT**

2 3/8", 2 7/8", 4 1/2" pipe
3/4 & 7/8 sucker rods

WELDING SUPPLIES

Oxygen CX125 & acet. Bottles
for sale

Welding rods & wire

Top & bottom belts for all bal-
ers

Twine 4' & 5' netwrap

Portable panels, Feed Bunks
& Round Bale Feeders

Forrest Johnson

LEONARDVILLE, KS 66449

785-293-5583

785-293-2235

FOR SALE: FIRESTONE
18.4x28, 70%, \$325, PH.
785-589-2285

MACHINERY

COMBINES

2007 Case IH 7010, 4WD
2011 Case IH 7088, 4WD
2011 Case IH 3020 flex 30'
2007 CASE IH 2020 flex, 30',
35'

2006 Case IH 2388 4WD

2005 CASE IH 2208 8RN

NEW TRACTORS

Case IH Magnum 250 CVT

Case IH Maxxum 115 MFD

Case IH Farmall 105U MFD

Case IH Farmall 120C MFD

USED TRACTORS

2013 Case IH Magnum 340

2013 Case IH Maxxum 125

MC

1996 JD 6300 2WD, cab, ldr

1980 JD 2440 2WD, ldr

2006 NH L180 skidsteer ldr

MISCELLANEOUS

2010 Case IH 330 Turbo, 31'

2006 Case IH RMX 370 disc

28'

2011 Case IH 1240 16/31 fert.

2010 Case IH 1240 16/31

2008 Case IH 1240 16RN, BF

1995 Case IH 4800 FC 32'

1994 Case IH 8465, twine

IH 490 disc 25'

Landpride RB 55120 10' blade

2004 JD 915-7 ripper

CASE IH
AGRICULTURE
McConnell Machinery
1111 E. 23rd Lawrence, KS
785-843-2676
or
3313 Nebraska Terr. Ottawa, KS
785-242-1463
Evenings
785-979-2271
www.mcconnellmachineryco.com

30" ROWS, NEW IDEA CORN
picker, 327 two row pull type,
Meriden. 785-484-2328 or
785-230-3724

JD 956 MOCO \$14,000; CASE
IH 8465A baler \$5000; MW 12
wheel rake \$6000.
785-479-3762

'76 JD 4430 QUAD. RANGE
transmission, 3000 hrs., axle
mound duals.; 2003 JD 1590 no
till drill, 15", 7.5" spacing, new
disks, seed boots, 2014.
913-266-4294

FOR SALE OR TRADE

Gravity Wagons
New Holland 258 rakes: 1
ground driven, \$1,575; 1 hy-
draulic driven, \$3,650

Cooter's

785-562-2027

785-562-6131

FOR SALE: 2006 CASE IH
2208 corn head fully equipped.
Very low acres, make offer. 620-
727-4356

EXCELLENT 2005 1890 JD Air
seeder with 1910 cart. 36' 7 1/2'
spacing. This unit shows very lit-
tle wear, paint looks new.
\$87,500 OBO, trades consid-
ered. 785-452-5685 or
785-227-2578

JD 216 BEAN HEAD, \$1,500.
Farmhand F11 hydraulic loader,
3 spool & heavy-duty pump,
\$1,250. 620-947-3258, Hillsboro

EMPLOYMENT

GROWING IRRIGATION com-
pany in Great Bend/ Larned
area looking for self motivated
individual with agronomy, farm-
ing experience for outdoor in-
stallation of systems. Current
CDL preferred. Benefits include
holiday pay and health insur-
ance. Fax resume with refer-
ences to 620-345-7145.

ANTIQUES

107th Chapman Labor Day
Sept. 3-5th
C/77 CAR SHOW

See over 100 years of cars
from 1911 Model T to a 2016
Dodge Charger Hellcat.

BARN QUILT TOURS

Self-guided tour of over 80
barn quilts!

Lots of activities -Tractor, Toy,
Quilt Shows; Golf, 5k, ball
competitions. Food & crafts.

www.chapmanks.com

Fb: Chapman Car Show;

city of Chapman

PARADE TIME:

2 p.m. Monday

Chapman - The Barn Quilt

City of Kansas!

ANTIQUES

**Make Your Ad Stand
Out From The Rest!**

Place a Classified Display

ad in Grass & Grain!

Your ad can include logos,

photos, & different fonts!

Place an ad this size for

only \$20 per week!

Run an ad of at least this size for

one week between Aug. 9-Sept. 30,

& get a 2nd week for 1/2 price!

Just email logos, photos,

text, or questions to Kezia at:

gandglass@agpress.com

(Please mention this advertisement

when placing yours!)

JD630 ROW CROP TRACTOR,
new tires front and rear - \$3500.
Copper Clad wood cook stove
with water chamber and over-
head warmers. About 1916.
\$1200. (913) 837-6417

BUILDINGS - BLDG MATLS



STEEL BUILDING

INVENTORY SALE

I-Beam Construction

Easy Bolt-Up Design

40x65, 60x90, 100x150

Many Others Available

(800) 369-3882

www.toplinebuildings.com

sales@toplinebuildings.com



**The Legendary
Red Rhino**



The Best Trailers

Built... Period!

1-855-880-7964

gobobks.com

Butterfly Supply, Inc.
800-249-7473

• Tubing • Rods • Cable •
• Guardrail • Clips •

**STEEL FENCING &
BUILDING
SUPPLIES**

www.butterflysupplyinc.com



FOAM INSULATION

The Icynene Insulation
System™ Metal Bldgs. —
Homes

800-334-3626

Healthier, Quieter, More
Energy Efficient.™
MID-AMERICAN SALES, INC.

METAL PANELS
& ACCESSORIES

THE VALUE LEADER
WE WON'T BE UNDERSOLD
METAL \$54/ SQUARE

• DELIVERY AVAILABLE •
Prices subject to change

WESTERN METAL

2 Locations • Best Service

LOUISBURG, KANSAS

1-800-489-4100

HAYS, KANSAS

1-800-770-2725



29 ga 40yr ptd.....\$62/sq

29 ga 20yr ptd.....\$55/sq

29 ga Galvalume\$47/sq

Complete Building

Packages

Doors, Insulation, Livestock

Equipment, Scales, Waters

Jobsite Delivery Available

(prices subject to change)



BUILDINGS - BLDG MATLS

SMITH POSTYARD

Hedge Post

Delivery Available

JEFF SMITH

620-496-8956

BINS - DRYERS - VACS



Check my prices
on Brock Grain Bins

CONTACT: LYNN KOHAKE

785-336-1692

SERVICES

LARRY'S PORTABLE Sawmill

service, can come saw your

logs. 785-776-8153.

785-565-2647.

CARY'S TREE/FIELD clearing

service. 75.00 per machine

within a 50 mile radius of Clay

Center Ks. We place in piles

when finished for burning. For

Questions call Curtis at

785-427-6117 or David at

785-307-3948

**CUSTOM
PORTABLE
DISC-ROLLING**

DARRELL WAGONER

Cell: 785-650-4094

FOR SALE: BORDER COLLIE

pups, male, 8 weeks old, shots

and wormed \$150.00

785-256-6422

REGISTERED PEDIGREE Aus-
tralian Shepherd Puppies.

Ready at 7 weeks old 9-2-16.

Sedan KS 620-249-7938

HARVESTING

CUSTOM FALL GRAIN harvest

corn and beans. Book your

acres now. 785-617-0652 or

785-617-0663

GUARANTEED USED TRUCK

tires. Truck tire Sidewalls for Si-

lage Covering. GeeTire.com

Call 785-231-8397

1999 GLEANER 8 ROW 30"

Hugger Corn Head SN 25191.

\$15,250, (402) 540-9431

WANTED

WANTED: TANDEM GRAIN

truck or single axle tractor with

short grain box, gas or diesel,

must be good mechanical with

good rubber. 785-488-7810 or

785-488-3875

DAMAGED
GRAIN
WANTED
STATEWIDE

We buy damaged grain,

any condition

-wet or dry-

-including damaged

silo corn.

TOP DOLLAR!

We have vacs

and trucks.

CALL HEIDI OR

GARTON

NORTHERN AG

SERVICE, INC.

800-205-5751

MISCELLANEOUS

OPPORTUNITY TO RUN A

small town cafe in Woodbine,

KS., lease agreement includes

food service equipment.

785-257-3441

FOR SALE: BEE EQUIPMENT.

Deepes, mediums, frames and

more. Phone 785-632-7009.

American Junior Simmental Association announces Steer Profitability Competition

The American Junior Simmental Association (AJSA) recently released its new junior program, the Steer Profitability Competition (SPC). The SPC is designed to provide members of the AJSA meaningful exposure to the opportunities and challenges associated with cattle feeding. The SPC will not only allow participants to measure and compare the profitability of their own animal(s), but of greater importance will introduce young beef enthusiasts to peers, mentors, industry advocates, and experiences that are exceedingly difficult to acquire for any beef producer. Participants in the SPC program will be powerful voices as they transition from junior membership to adult participation within the beef industry.

AJSA youth interested in entering the SPC must hold an active AJSA membership, and can enter one, two or three head of steers. The SPC is a terminal contest, marketed on a grade and yield grid. Steers must be entered in the American Simmental Association (ASA) database, with one parent registered in the ASA database. An informational meeting will be held on September 27 for any youth interested. All animals must have an ownership deadline of October 1, and be entered into the SPC no later than October 15, although earlier entry is encouraged. Steers will be picked up at regional locations and transported to Chappell Feedlot in Chappell, Nebraska, on November 1, 2016. Steers must have a birth date of January 15 to April 15, 2016, and weaned August 15 to October 15, 2016. All animals must be castrated, horn-free, weigh 500-750 pounds at pick up, and have a docility score of 1-3. Steers must also meet a health prerequisite prior to pick up. Slaughter will occur in early May at Cargill Meat Solutions in Fort Morgan, Colorado.

Exhibitors must agree to attend mandatory monthly online meetings and submit monthly reports. Profitability will be determined by subtracting accrued cost from final valuation. Awards will be presented for the top-three animals overall, as well as the top-three Pen of 3 overall at the 2017 National Classic in Hattiesburg, Mississippi. Exhibitors interested in entering the SPC, should contact ASA Youth Director Emily Lochner, elochner@simmgene.com.

The American Simmental Association is headquartered in Bozeman, Montana, and maintains the breed registries for the Simmental and Simbrah breeds of cattle. ASA has an active adult and junior membership of nearly 7,000.

Small-tractor sales slip in July but still market leader, says AEM

While U.S. retail sales of farm tractors under 40HP in July declined 6.3 percent, the year-to-date total was up 9.8 percent compared to last year, according to the latest monthly data from the Association of Equipment Manufacturers (AEM), the leading trade organization for off-road equipment manufacturers and suppliers.

U.S. retail sales for 2WD tractors 40-100HP declined 23.3 percent in July and were down 6.1 percent year-to-date.

Sales of 2WD 100+HP tractors in the U.S. declined 24.9 percent for July, with year-to-date sales down 24.0 percent, while 4WD tractors dropped 48.3 percent year-over-year and were down

33.6 percent year-to-date.

Combine sales declined 16.2 percent for July and recorded a 22.0 percent drop for year-to-date sales.

Charlie O'Brien, AEM senior vice president, provided some insights:

"The good news is that overall retail sales for small hp tractors are still above the five-year trends.

"For the under 40 HP tractors, this is the first time in 2016 that we have seen negative year-over-year comparison for the month. For 40-100HP tractors, while 2016 year-over-year sales have fluctuated,

the July decline appears to be significantly higher, and a drop this large has not been seen since October 2009.

"For combines, the positive growth in sales last month compared to the same month last year was not sustainable, as we are back in negative territory; Sales of larger production ag equipment continue their negative trend of the past year.

"Overall with half of the year behind us, I would say we continue to see this as a challenging year."



Dakota Mortell drove the reserve champion market hog at the Wyandotte County Fair. It was purchased by Roy and Mikala Mortell, Adam Turley and CKH Cattle Co.



Participants in the Buddy Barrow show at the Inter-State Fair in Coffeyville gathered for a photo.

Courtesy photo

Caring for others through pigs – Buddy Barrow show held in Coffeyville

It's better to give than to receive, and that's what a group of 4-H and FFA youth did at the Inter-State Fair in Coffeyville on August 12.

The annual Buddy Barrow show took place, with 38 special needs adults matched up with a 4-H or FFA exhibitor.

The special people learned about their mentors' pig, then showed that

pig in the show ring.

A grand champion and reserve grand champion exhibitor were selected.

Michael Crites won grand champion, and Ramona Dodson was reserve grand champion. Both won buckles for their endeavors.

Michael Crites, who lives in Coffeyville, was paired up with FFA exhibitor Jacob Keene and showed

Jacob's crossbred pig named Willow. Jacob was complimentary of Michael's abilities. "He did really good," Jacob said. "I swear, he's a professional. I think he does better than I do, honestly. He can take my position."

Michael was very proud of his buckle, and loved showing the pig.

Ramona Dodson, reserve grand champion, was mentored by Maddie Bassett. Ramona likes pigs and planned on putting her buckle in a special spot.

Clients of Class Ltd. love the show and have participated every year since it started eight years ago. "It's something they really enjoy, getting to do something they don't normally get to do," said Kelly Fincher, Director of Community Relations and Development for Class. "They look forward to it every year." A Class client won the buckle at the Buddy Barrow show last year, Kelly said. "When I took pictures of him with his buckle, he had tears in his eyes. It's a really special event."

Fincher was complimentary of the 4-H and FFA exhibitors as well. "The kids work so well with them, and they're patient and understanding. It's a really great thing."

Because of the success of the Buddy Barrow show, Class has started another show, this one with goats, at the Cherokee County Fair in Columbus. It is in its third year, and "the community and the kids couldn't be more excited, and the clients absolutely adore it," Fincher said.

Each participant of the Buddy Barrow show received a t-shirt. The show was judged by Travis Jenkins, agriculture teacher at Chelsea, Okla. Class Ltd. is sponsor of the show.



The grand champion market hog at the Wyandotte County Fair was shown by Isaac Cook and purchased by Ron Kaminski Real Estate.

UPCOMING AUCTIONS

CONSIGNMENT SALE WITH MERCHANDISE FROM KANSAS DEPT. OF WILDLIFE, PARKS & TOURISM SATURDAY, SEPTEMBER 24, 2016 AT 10:00 AM

601 S Broadway, Salina, KS

30+ antique saddles & tack, industrial equipment & tools, contractor sell out & more!!

View sale bill on our web site and check often for updates as items are arriving daily.

125 GUNS AUCTION

601 S Broadway, Salina, KS

SUNDAY, OCTOBER 9, 2016 AT 1:00 PM

Approx. 125 guns. Watch our web site for sale bill

CALL TO BOOK YOUR FARM, HOUSEHOLD OR MACHINERY AUCTION!

Wilson Realty & Auction Service

P.O. BOX 1305, SALINA, KS 67401 • (785) 827-3563

LONNIE WILSON - OWNER/BROKER/AUCTIONEER • (785) 826-7800

DAVE HUNT - SALES MANAGER • (785) 201-5257

CAROLYN HUTCHINS - OFFICE MANAGER • (785) 823-1177

Website & Contact Email Addresses: www.soldbywilson.com

Any announcement made the day of sale takes precedence over any printed matter.

For Latest Update & Pictures go to website: www.soldbywilson.com

AUCTION

SATURDAY, SEPTEMBER 10 — 9:30 AM

2900 KIMBALL AVENUE, MANHATTAN, KANSAS
(ST. THOMAS MORE CATHOLIC CHURCH, UTOPIA ROOM)

Residents and Estates have donated **MANY** items including the following to benefit the Meadowlark Hills Foundation Good Samaritan Fund.

Dining tables & sets; sofas; bookcases; daybeds; washers; dryers; chests; dressers; patio tables & chairs; chairs; beds; headboards; teak buffet; Oak

Mission rocker; bedroom suite; trunks; Oak pedestal table & 4 chairs; Artwork (some signed); GoGo scooter; cast iron Fido bank; lamps; copper items;

glassware; dishes; small appliances; **LOTS OF JEWELRY**; home décor; wicker chairs; work bench with light; many many many more items!

This is a very partial list-4 storage units are Full. Many quality items of all descriptions have been donated! Breakfast and Lunch available.

MEADOWLARK HILLS FOUNDATION GOOD SAMARITAN FUND

AUCTION SERVICE DONATED BY

GANNON AUCTIONS

785-770-0066 MANHATTAN, KANSAS 785-539-2316

www.gannonauctions.com

Marysville Livestock Sales

Every Thursday at 12 Noon

Donnie Kirkham, Manager • 785-562-1015
1180 US Hwy. 77, P. O. Box 67, Marysville, KS 66508

SALE INFORMATION FOR AUGUST 25, 2016

CALVES BY THE HEAD			COWS		
BAILEYVILLE	1 BLK HFR	\$425.00	AXTELL	1 XBRD COW	1,525@\$83.00
BAILEYVILLE	1 BLK HFR	\$350.00	WHEATON	1 BWF COW	1,260@\$82.50
JANSEN,NE	2 HOL HFR	\$150.00	BREMEN	1 BLK COW	1,355@\$81.50
STEERS			CENTRALIA	1 BLK COW	1,585@\$80.50
PAWNEE CITY,NE	6 XBRD STR	435@\$191.00	BERN	1 BLK COW	1,395@\$80.00
BAILEYVILLE	2 BLK STR	327@\$190.00	WHEATON	1 BLK COW	1,115@\$79.50
BAILEYVILLE	1 BLK BULL	330@\$190.00	AXTELL	1 BLK COW	1,290@\$79.50
BAILEYVILLE	2 BLK STR	442@\$181.00	SUMMERFIELD	1 BLK COW	1,700@\$78.50
WATERVILLE	1 BWF STR	580@\$175.00	WHEATON	1 BLK COW	1,270@\$78.50
MARYSVILLE	3 BLK STR	450@\$174.00	CENTRALIA	1 BLK COW	1,470@\$78.00
PAWNEE CITY,NE	3 XBRD STR	545@\$168.00	SENECA	1 WF COW	1,325@\$78.00
PAWNEE CITY,NE	1 XBRD STR	590@\$167.00	BERN	1 BLK COW	1,660@\$77.50
ODELL,NE	2 BLK STR	542@\$166.00	SENECA	1 WF COW	1,275@\$77.00
MARYSVILLE	1 BLK STR	615@\$161.00	WHEATON	1 BLK COW	1,205@\$77.00
ODELL,NE	1 XBRD STR	670@\$152.50	CENTRALIA	1 BLK COW	1,500@\$76.50
WATERVILLE	2 XBRD STR	697@\$150.50	SUMMERFIELD	1 BLK COW	1,650@\$76.50
MARYSVILLE	1 BLK STR	770@\$140.50	SUMMERFIELD	1 BLK COW	1,445@\$76.00
FILLEY,NE	4 XBRD STR	896@\$134.75	SENECA	1 WF COW	1,235@\$76.00
BURCHARD,NE	13 XBRD STR	906@\$134.50	RANDOLPH	1 BLK COW	1,410@\$76.00
AXTELL	15 BLK STR	903@\$134.50	WHEATON	1 BWF COW	1,130@\$76.00
CORTLAND,NE	1 BWF STR	865@\$133.00	BREMEN	1 BLK COW	1,275@\$75.50
BREMEN	1 BLK STR	750@\$131.00	BAILEYVILLE	1 BLK COW	1,210@\$75.50
FILLEY,NE	1 BLK STR	1,000@\$125.50	BURCHARD,NE	1 RED COW	1,275@\$75.50
PALMER	4 XBRD BULL	1,085@\$115.00	BLUE RAPIDS	1 BLK COW	1,230@\$75.00
HEIFERS			AXTELL	1 BLK COW	885@\$75.00
MARYSVILLE	1 BLK HFR	485@\$159.00	SENECA	1 WF COW	1,200@\$75.00
BREMEN	9 BLK HFR	537@\$156.50	SENECA	1 WF COW	945@\$75.00
PAWNEE CITY,NE	2 BLK HFR	537@\$156.50	SENECA	1 XBRD COW	1,220@\$75.00
SENECA	2 BWF HFR	425@\$156.00	SENECA	1 WF COW	980@\$75.00
ODELL, NE	6 BLK HFR	540@\$155.00	SENECA	1 WF COW	1,355@\$74.00
WHEATON	1 BLK HFR	545@\$154.50	HERKIMER	1 BLK COW	1,425@\$74.00
PAWNEE CITY,NE	3 BLK HFR	440@\$154.00	BURCHARD,NE	1 RED COW	1,145@\$73.00
MARYSVILLE	2 XBRD HFR	491@\$152.00	SUMMERFIELD	1 BLK COW	1,710@\$72.50
ODELL,NE	5 XBRD HFR	562@\$150.00	PALMER	1 BLK COW	1,505@\$71.00
BREMEN	2 BLK HFR	522@\$149.00	WESTMORELAND	1 BLK COW	1,100@\$70.50
ODELL,NE	3 CHAR HFR	585@\$148.50	BAILEYVILLE	1 BLK COW	1,430@\$70.00
FILLEY,NE	4 XBRD HFR	578@\$146.25	HERKIMER	1 BLK COW	1,455@\$70.00
MARYSVILLE	1 XBRD HFR	600@\$144.00	BERN	1 RED COW	1,280@\$70.00
WATERVILLE	1 BWF HFR	625@\$140.00	BREMEN	1 BLK COW	1,070@\$70.00
HANOVER	1 XBRD HFR	595@\$136.00	BREMEN	1 BWF COW	1,100@\$70.00
JANSEN,NE	1 XBRD HFR	660@\$135.00	JANSEN,NE	1 HOL COW	1,320@\$67.50
FILLEY,NE	1 XBRD HFR	540@\$133.00	WASHINGTON	1 BWF COW	995@\$66.00
MARYSVILLE	1 XBRD HFR	705@\$131.50	ODELL,NE	1 XBRD COW	990@\$65.50
MARYSVILLE	1 XBRD HFR	705@\$130.00	ODELL,NE	1 HOL COW	1,360@\$65.50
MARYSVILLE	1 XBRD HFR	680@\$130.00	BAILEYVILLE	1 BLK COW	1,170@\$65.00
MARYSVILLE	1 BLK HFR	700@\$129.50	ODELL,NE	1 HOL COW	1,415@\$64.50
FILLEY,NE	2 XBRD HFR	722@\$128.00	PALMER	1 XBRD COW	1,375@\$64.50

HFRETES			ADULT BULLS		
BERN	1 BLK HFRETTE	900@\$125.00	OLSBURG	1 CHAR BULL	1,525@\$100.00
BERN	1 BLK HFRETTE	895@\$123.00	BLUE RAPIDS	1 WF BULL	1,520@\$95.50
BEATRICE,NE	1 XBRD HFRETTE	910@\$121.00	MARYSVILLE	1 CHAR BULL	1,840@\$95.50
BERN	1 BLK HFRETTE	965@\$120.00	EARLY CONSIGNMENTS FOR 9-1-2016		
CORTLAND,NE	2 XBRD HFRETTE	792@\$119.50	25 BLK STRS/HFRS	450-600#	V HR
SUMMERFIELD	1 BLK HFRETTE	1,020@\$118.50	35 BLK STRS/HFRS	500-600#	WV HR OG
SUMMERFIELD	1 BLK HFRETTE	1,065@\$118.00	45 RED ANG Strs/Hfrs	500-650#	WV HR OG
CORNING	1 BWF HFRETTE	885@\$114.00	40 BLK STRS/HFRS	550-700#	WV HR OG
JANSEN,NE	1 HOL HFRETTE	880@\$92.50	18 BLK & xbred STRS	600-700#	WV HR OG
WHEATON	1 BWF HFRETTE	1,215@\$87.50	55 BLK STRS/HFRS	700-900#	WV HR
WHEATON	1 BLK HFRETTE	1,080@\$87.00	60 BLK STRS	800-850#	WV OG
WHEATON	1 BWF HFRETTE	1,115@\$83.00	HOLSTEIN SPECIAL - SEPTEMBER 8		

BRED COWS/PAIRS			FIELDMEN		
SUMMERFIELD	5 BLK COW 2 yrs 8 mo	\$1,950.00	Jim Dalinghaus	Dave Bures, Auctioneer	Jeff Cook
SUMMERFIELD	8 BLK COW 6-7 yrs 7-8 mo	\$1,950.00	785-799-5643	402-239-9717	785-564-2173
SUMMERFIELD	2 BLK COW 6-7 yrs 7-8 mo	\$1,525.00	Baileyville, KS	Odell, Nebraska	785-747-8170
HERKIMER	1 BLK COW 5 yrs 8 mo	\$1,525.00	Barn Phone • 785-562-1015		Waterville, KS
HERKIMER	2 BLK COW 6 yrs 7 mo	\$1,275.00			Frankfort, KS

			www.marysvillelivestock.com		
--	--	--	-----------------------------	--	--

USDA to purchase surplus cheese for food banks and families in need, continue to assist dairy producers

The U.S. Department of Agriculture (USDA) has announced plans to purchase approximately 11 million pounds of cheese from private inventories to assist food banks and pantries across the nation, while reducing a cheese surplus that is at its highest level in 30 years. The purchase, valued at \$20 million, will be provided to families in need across the country through USDA nutrition assistance programs, while assisting the stalled marketplace for dairy producers whose revenues have dropped 35 percent over the past two years.

"We understand that the nation's dairy producers are experiencing challenges due to market conditions and that food banks continue to see strong demand for assistance," said Agriculture Secretary Tom Vilsack.

"This commodity purchase is part of a robust, comprehensive safety net that will help reduce a cheese surplus that is at a 30-year high while, at the same time, moving a high-protein food to the tables of those most in need. USDA will continue to look for ways within its authorities to tackle food insecurity and provide for added stability in the marketplace."

USDA received requests from Congress, the National Farmers Union, the American Farm Bureau and the National Milk Producers Federation to make an immediate dairy purchase. Section 32 of the Agriculture Act of 1935 authorizes USDA to utilize fiscal year 2016 funds to purchase surplus food to benefit food banks and families in need through its nutrition assistance programs.

USDA also announced that it will extend the deadline for dairy producers to enroll in the Margin Protection Program (MPP) for Dairy to Dec. 16, 2016, from the previous deadline of Sept. 30. This voluntary dairy safety net program, established by the 2014 Farm Bill, provides financial assistance to participating dairy producers when the margin – the difference between the price of milk and feed costs – falls below the coverage level selected by the producer. A USDA web tool, available at www.fsa.usda.gov/mpptool, allows dairy producers to calculate levels of coverage available from MPP based on price projections.

On Aug. 4, USDA announced approximately \$11.2 million in financial assistance to U.S. dairy producers enrolled in MPP-Dairy, the largest payment since the program began in 2014.

"By supporting a strong farm safety net, expanding credit options and growing domestic and foreign markets, USDA is committed to helping America's dairy operations remain successful," said Vilsack.

While USDA projects dairy prices to increase throughout the rest of the year, many factors including low world market prices, increased milk supplies and inventories, and slower demand have contributed to the sluggish marketplace for dairy producers.

USDA will continue to monitor market conditions in the coming months and evaluate additional actions, if necessary, later this fall.

National Jersey Queen to be selected during All American

The 62nd National Jersey Queen will be selected Saturday, November 5 at the conclusion of Junior Day activities at The All American Jersey Shows and Sale in Louisville, Ky.

The 2016 National Jersey Queen will begin her reign when she is introduced with her court at the National Jersey Jug Futurity on November 6. Later that evening, the new Queen and her Court will assist with The 64th All American Jersey Sale, then present the sashes when the Jersey All Americans of 2016 are selected November 7 in The All American Jersey Show.

She will succeed the reigning Queen, Regina Pozzi of Petaluma, Calif.

Scholarships totaling \$1,000 are presented to the Queen and alternates from the Charlene Nardone National Jersey Queen Fund.

Participants in the National Jersey Queen Contest must be at least 16 years of age, but not older than 22, on January 1, 2016 and a Junior Member in good standing or Lifetime Member of the American Jersey Cattle Association. Additional eligibility requirements are detailed in the contest rules.

Candidates for National Jersey Queen are evaluated on the quality of their application and proposed platform, interview, general dairy and Jersey breed knowledge, and public speaking, both prepared and extemporaneous. Each of the contest elements is described in the contest application materials now posted on the USJersey website.

Applications must be received in the AJCA office on or before Friday, October 14. Judging begins on Friday, November 4.

The National Jersey Queen represents the Jersey community throughout the year at local, state and national events, including the 2017 AJCA-NAJ Annual Meetings, June 21 to 24 in Gettysburg, Penn.

For more information about participating in or supporting the National Jersey Queen development program, contact Dr. Cherie L. Bayer, Director of Development, at 614-322-4456, or email info@usjersey.com with "National Jersey Contest" in the subject line.

The All American Jersey Show & Sale is an annual production of the American Jersey Cattle Association, Reynoldsburg, Ohio. Ap-

proximately 100 Jersey breeders from across the United States serve on the All American planning committees, which meet annually in March.

September 20 is the deadline for open and junior show entries, as well as final nominations for the National Jersey Jug Futurity. For premium list with



Owen Franken led the grand champion market lamb at the Wyandotte County Fair. It was purchased by 7th Street Casino.

LABOR DAY AUCTION

MONDAY, SEPTEMBER 5 — 9:30 AM
American Legion Post 14, 3408 W. 6th Street
LAWRENCE, KANSAS 66049

Tiffany Estate and Others, Great Auction with Numerous Items Yet to be Moved and Unpacked! Plan to Attend!!
See Complete Sale Bill & Photos at www.dandlauctions.com

Antique Tool Collection: Numerous Planes incl. Stanley No. 8, 45, 55, 72, 85 and 113, Bailey No. 7, Keen Kutter, Levels, Machinist Chest, Jewelers Anvils, Measuring Wheels, Early Tripod in Leather Case, Brass Microscope, and Much More.

Glassware & Pottery: Great Selection of Antique Glassware, incl. Fenton, Carnival and Depression Glass, Roseville, Hull and McCoy Pottery, Frankoma GOP Mugs.

Collectibles & Jewelry: Early Quilts, Pocket Knives, Pocket Watches, Zippo Display (NIB), Lot of Jewelry, Old Toys, Canes, Framed Pictures, Jayhawk Milk Bottles, Muehlebach Beer Cases, Santa Fe Bucket, Coca-Cola Dispenser, Tobacco Related Items, Old Tins, and Numerous Other Collectibles.

Concessions Available

D & L Auctions, Lawrence, KS • 785-766-5630
Auctioneers: Doug Riat & Chris Paxton

AUCTION

SUNDAY, SEPTEMBER 4 — 12:00 NOON
211 N. Arizona St. — LEONARDVILLE, KS

2 Hoosier Cabinets, White Mountain ice box, walnut dining room table (made by Dennis Hagenmaier), 2 cast iron bells, 3 concrete bird baths, metal toy truck, platform scales, Vintage Railroad Luggage cart (restored), copper fire pit, Depression glass: pink, green, yellow, clear, large selection of dinnerware, kitchen items, canning jars, bookshelves, crank corn sheller, Refrigerator, freezer, vases, crafting items, drop leaf table, ceramic figurines, sleds, water and ice coolers, children's bentwood chairs, horse drawn farm implements, plows, cultivators, steel wheels, garden trellises, metal yard windmills, garden items, concrete animal statues, T-posts, yard cart, stain glass, wire egg basket, metal patio furniture, vintage metal bed frame, concrete planters, push sickle mower, Table top drill press on cabinet, jointer, scroll saw, disc and belt sander, band saw, planer, grinder all on stands, McCall pattern cabinets, tool boxes, Large Selection of pneumatic nail guns, (many) wood clamps, pipe and hand, pipe wrenches, air compressor, Dewalt cordless drill, hand sanders, nails, saw blades, hand tools, socket sets, Echo gas tiller, extension cords, complete electrical temporary service, misc electrical and plumbing supplies. **MUCH MORE!**

SELLERS: LARRY & LINDA PETERS

AUCTIONEER'S NOTE: Larry was a carpenter for over 50 years! A complete shop full of tools. Linda collected for many years. Something for everyone. Come enjoy the day with us.
Lunch will be available



Jeff Ruckert, Auctioneer/Broker
Manhattan, KS 66502
785-565-8293
jctt.97@gmail.com

www.RuckertAuctions.com



Wyandotte County Fair's reserve champion market lamb was shown by Owen Franken and purchased by Petro Deli.

480+ LOT COIN AUCTION
SATURDAY, SEPTEMBER 10 — 10:00 AM
Best Western Hotel-3021 W. US Hwy. 50
EMPORIA, KANSAS

Victor Edelman, Broker/Auctioneer
Hope Edelman, Owner/Real Estate Agent,
Contact us to get your list now **620-366-0729**
or go to www.swiftsureauctions.com

FARM MACHINERY AUCTION

SATURDAY, SEPTEMBER 10 — 10:00 AM

AUCTION LOCATION: From Phillipsburg, KS — 10 Mi. North to W. Hunter Rd, 7 Mi. West to W. 700 Rd, 1 1/4 Mi. North. From Alma, NE: 8 Mi. South to HWY 383, 5 Mi. West to W. 700 Rd., 4 1/4 Miles South. (WATCH FOR SIGNS)

For Color Pictures Visit www.hamitauction.com

TRACTORS: 7120 CASE INTERNATIONAL, 3 PT, PTO, 3 Remotes, 18 Speed Powershift, 8228 Hrs, 18.4R42 Rear Duals 60%, 14L-16.1 Front SN JJA0031515 (Very Nice Tractor); 1973 FARMALL 1466 INTERNATIONAL Turbo, PTO, 2 Remotes, 9253 Hrs, 18.4-38 Rear 30%, SN 2650114U 017926; Black Knight CASE 970 AGRILING 5427 Hrs, PTO, 2 Remotes, Quad Range w/3 Speed Powershift, 32.1-30 Rear 30%, SN 8676855

TILLAGE & FARM EQUIP: 24' John Deere Field Cultivator w/Harrows SN N00960X00 2473; 18' SUNFLOWER Model 3340 V Blade w/Pickers, NH4 Setup — Needs new NH4 Hoses SN 3390013; KRAUSE Model 901 Disc SN 7173; MILLER DISC SN 106302; Spring Tooth Harrow; 12' SUNFLOWER V Blade w/Noble Harrows SN 76206; 12' SUNFLOWER V Blade w/NH4 Tank SN 732539; BURCH PLOW WORKS 10' Disc SN 103634; INTERNATIONAL 150 Hoe Drill w/Fertilizer Box, 10" Spacings; 300 gal. Sprayer w/Booms; Model 479 New Holland Swather, 9' Cut, 540 PTO SN 423135 - 3 PT 540 PTO Driven Log Splitter; Propane Bottles; 2 COLUMBIAN Grain Bins to be moved; 2 Fuel Tanks w/Stands; 50 gal. Diesel Tank w/hand pump; KODIAK 10' Heavy Duty Mower, 540 PTO (exec. Shape); 3 PT BUSHHOG 540 PTO — 5 IH Tractor Weights.

PICKUP: 1993 FORD F150 XLT 4x4 pickup w/LuVerne Grill Guard, 5 spd manual trans., 5.0 302 V-8 eng., 250K.

TRAILERS, LIVESTOCK EQUIPMENT & MISC. ITEMS: 5 Bale Hay Van; 1981 16'x6' W-W Stock Trailer; 2 Wheeled Flatbed Trailer; Pickup bed Trailer w/toolbox; 7'x4' Tilt Bed Trailer; LINN Squeeze Chute; 27 9.5' FARM MASTER BIG VALLEY Portable Panels on Portable Panel Trailer (Built by Cliff's Welding); 10 8' Fenceline Slanted Feed Racks (Built by Cliff's Welding); Mineral Feeder; 4 18' Square Tubing Cattle Panels; 3 PT Bale Mover; 3 PT Bale Unroller; 2 Wheeled Bale Mover w/Manual Winch; 300 Gallon Water Tank; Wire Winder w/Briggs INTEK I/C 206 Motor; Behlen Country Hog Waterer; 3 Big & 2 Small Hog Feeders in good shape; 2 Sided Creep Feeder; PRIDE OF THE RANCH Model F 100A 80 Bushel Steer Booster; 3 Round Bale Feeders; 4 12' IP Prairie Products Metal Feed Bunks; Several Hog & Combination Livestock Panels; Oil Field Tank Calf/Animal Shed; Chicken Feeders & Waterers; Rabbit Hutches; FARMSTAR EQUIPMENT 3 PT Broadcast Spreader 540 PTO (New); Lektrik Hen BROODER HD HUDSON MAN-

UFACTURING COMPANY CAT NO. 71 MODEL A WATTAGE 150 AC VOLTAGE 115; Baler Twine; Hot Shots; Power Sanders; Worklights; Fence Chargers; Pet Taxi; Large Dog Kennel; Step Ladder & Stools; Hitch Pins/Clevis; Earthway Garden Seeder w/plant plates; Tree Pruner; Jack Stands; Dremel; JD Metric Combo Wrench Set; 9" Wire Cutters; Smart Plier; Sunborn Pistol Type Air Grease Gun (New); Tool Boxes; Fans; Truck Cab Organizer; Ratchet Straps; Chains; 10' of 60 H Roller Chain (New); Misc. New Filters; Paint Scraper; Heatgun; 12' Propane Hose/Regulator Assembly (New); Propane Hookup Kit; 2 gal. Sprayer; Calf Puller; OB Chains; D Rings; Lariat Ropes; Car Ramps; Vise on Stand; Gas Cans; Welding Helmet; Battery Charger; 220V Air Compressor; Several Foot Hold Traps (asst sizes); sev. Coyote & Coon Hide Stretchers; Ratchet/Socket Sets; Several Wrenches, Sockets, Screwdrivers; Sheep Shearing Equipment; Cable Shaft Shear; Assortment of Blades/Combs; Sharpening Wheel w/Motor; Electric Clippers.

45 Round Bales of this year's Prairie Hay will sell. Hay is located on the Nebraska State Line.

Selling for Alan Hanke: 2011 20' CARRY-ON Car Trailer with foldup ramps, 7000 lb axles, w/Electric Winch, 16" Tires (EXEC. RUBBER); 2010 7' x 28' Circle D Triple Axle Stock Trailer, NEW 235/85R16 Tires; 1988 6'x16' WW Stock Trailer, Rubber Floor; 1993 36' Accutrack Triple Axle Flatbed Trailer w/Ramps; 14 Bale Pipe Hayrack (goes on the 36' flatbed trailer); H&S V12 Wheel Rake (SHARP); 535 JD Baler, Twine, 1000 PTO SN E00535X888967; Model H1100 Haybuster Big Bite Tub Grinder SN8411893; Model 5'x12' Kelly Ryan Feedwagon, hydraulic Drive, SN 8821564 (Always Shredded); Flexing 6x5

Sweeps w/NH4 setup, New NH4 Hoses; JD Skiles 1000 Gallon Nurse Tank, Honda Motor & Pump; 1000 Gal NH4 Tank; 1985 SCOTTSDALE 20 Chevy Pickup, 350 Motor, 4x4, NEW NEXEN ROADIAN MT 16" Tires, New Brakes, 129K, w/Winkel Flatbed; 1978 1070 Case, Quad Range w/3 Speed Powershift, 3 PT, PTO, 2 Remotes, 6783 HRS, 18.4-34 Rear (EXCELLENT RUBBER) w/Dual 3100 Loader, 7' Bucket w/Grapple; 19 WINKEL Portable Cattle Panels & Trailer; Tractor Tire Feedbunks; 30' & 15' Hay Feeders; MORIDGE 275 Bushel Grain Dryer; 1979 CASE Tractor Lawn Mower #224 Hydro, 45" Cut, 18 Horse Kohler Motor, New Battery (Nice Old Lawn Mower); 500 gal. Steel & 450 gal. Plastic Water Tanks.

Selling for Jason Lentz: 1983 CASE 2390 Tractor, 8,342 Hrs, PTO, 3 PT, 2 Remotes, Quad Range w/3 speed power shift, 18.4R38 Rear Duals 90%, Engine, Transmission & Rear End Overhauled at 6,600 Hrs SN 8850767; 1978 CASE 2670 Traction King, PTO, 3 PT, 2 Remotes, Quad Range w/3 Speed Power Shift, 18.4-34 Tires Rear 70% Front 10%, SN 8794211; 2011 RHINO SWR 12 12 Wheel Hayrake SN 210908; 1961 Chevy Spartan Grain Truck, 348 Engine, 16' Box, 9.00-20 Tires (EXEC. RUBBER); 24' Krause Disc; 16'x8' Tandem Axle Trailer w/2' tall sides; Grain Fill Auger; 6 12' Stockmaster Feedbunks; 6' T Posts (New); 29 8' x 6" to 7" Creosote Posts (New); 4 Rolls 2 PT RedBrand Barb Wire (New); 1 Roll Barb Wire (New); 1 Roll Smooth 2 Strand Wire (New); WINKEL 3 PT Single Balefork; Skid Steer Attachments: JD Bale Spear; PROWLER 7' Root Grapple; TREE SHEAR; Delta Consolidated L Fuel Tank w/elec Pump Model #480000; 75 gal. Fuel Tank w/elec. Pump; 275/80R24.5 Radial M&S & DUNLOP 285/75R24.5 Tires.

These plus many more items to numerous to mention will sell!!
Terms & Conditions: Cash; Approved Check W/Positive ID; Visa & Master Card. (3% buyer premium waived if payment is made in cash or by good check). All Items Will be Sold "As-Is Where-Is". Not Responsible for Accidents. Announcements Made Day of Sale Take Precedence Over Printed Material. **MUST HAVE DRIVERS LICENSE OR POSITIVE PHOTO ID TO REGISTER FOR BIDDER NUMBER. Lunch Stand Provided!**

CODY MILLER LISTING AGENT: 785-533-3300

LEROY & BOBBY GODFREY ETAL

Hamit Land & Auction, Inc.
Don Hamit - Broker
Auctioneer
Cell 785-425-8123

Stockton Office - 785-425-6585
Russell Office - 785-483-7777
Hays Office - 785-621-3000
117 E. 13th Street
www.hamitauction.com

Farm & Ranches
Farm Equipment
Antiques - Estates
Residential
Commercial

NAA
Kansas

Low Stress Cattle Handling Workshop planned for September 26

"Cattle caregivers have exciting obligations, responsibilities, and opportunities to contribute to cattle well being. Shifting priorities from disease detection to performance enhancement results in new levels of cattle welfare," says DVM Tom Noffsinger. Dr. Noffsinger will be one of the

guest speakers at the "Low Stress Cattle Handling Workshop" hosted by Frontier Extension District and Coffey County Extension on September 26th, 2016. Presentations will begin at 8:30 a.m. at the Williamsburg Community Building,

Williamsburg. The Community Building is located on old 50 Hwy. in downtown Williamsburg. Pre-registration is required and will be limited to the first 225 participants. Call 785-828-4438 or 620-364-5313 to register by Sept 19th. Sponsors with commercial booths will be on site for participants to visit.

Dr. Noffsinger, a nationally recognized Low Stress Livestock Handling advocate and presenter, will serve as the keynote presenter for the day. After an introductory presentation on "Animal Welfare Concerns and Consumer Perceptions of Livestock Production," by Dr. Dan Thomson from Kansas State University, Dr. Noffsinger will continue the morning session with seminar-style indoor presentations including videos that cover the basic concepts, and introduce the techniques of low stress livestock handling with cattle. In the afternoon, attendees will move to a nearby ranch with facilities and cattle

that will enable Dr. Noffsinger to conduct actual live demonstrations and further elaborate on the techniques of low stress livestock handling while sorting in pens and working through facilities. Interspersed throughout the day will be presentations on "Livestock Working Facility Design with Safety in Mind," and "Weaning Practices to Reduce Stress on Calves."

Presenters for the day include: Dr. Dave Rethorst; Dr. Dan Thomson; Dr. Tom Noffsinger; Kelley Lenz (WIBW) and Joe Bichlemeyer (owner of Silkville Ranch).

Today's consumer of meat products is becoming more concerned with the welfare of the animals along all phases of the food production chain. Stress on an animal at any point along the journey from pasture to plate decreases productivity of the animal, profitability to the producer as well as quality of product to the consumer. Cattle handling has evolved a great deal

from the "whoopin' and holierin'" depicted in movies. Conscientious producers today are becoming increasingly aware of the public's concerns and are striving to incorporate a greater number of practical "quality assurance" practices into their livestock production enterprises. "Low Stress Livestock Handling" throughout the production chain is one aspect of this "quality assurance" effort.

Stockmanship is an under-appreciated and under-utilized component of operating sustainable livestock operations and just one essential component is low stress livestock handling. Evidence is there to persuade us that it is worth adopting low stress livestock handling. It accrues benefits over conventional livestock handling in several categories, including performance, efficiency, safety, animal welfare and quality of life.

Numerous scientific studies have illustrated that indices of animal perform-

ance (e.g., weight gain, conception rates, milk yield, immune function and carcass quality) are positively correlated with good livestock handling practices and negatively correlated with coercive handling practices.

The first step in adopting low stress cattle handling practices is to develop a calm attitude when moving cattle. The second step to learning low stress cattle handling methods is to fully understand the principle of flight zones and point of balance.

Caretakers can have a positive impact on cattle health, performance, and well being through effective low stress handling at key interventions like calving, tagging, grazing, weaning, processing and shipping. Producers that concentrate on low stress handling skills will recognize abnormal behavior and attitude and develop the confidence and skill to manipulate behavior to improve levels of animal welfare.

EMPORIA LIVESTOCK SALE CO.

Bonded & Insured

SALE EVERY WEDNESDAY IN EMPORIA, KANSAS AT 11:00 AM

620-342-2425 or 800-835-7803 toll-free • Fax: 620-342-7741

Date: 8/24/16 Total Head Count: 1,426. COWS: \$77-80; \$72-76.75; \$71 & down. BULLS: \$97-100.

HEIFERS	5 mix	676@143.00
4 mix	536@149.00	15 mix
6 char	589@135.75	8 blk
8 blk	649@147.00	4 char
5 blk	628@139.75	9 blk
16 mix	651@139.00	5 blk
27 mix	740@138.00	14 mix
5 blk	763@137.00	5 mix
4 blk	713@136.50	5 blk
12 mix	775@136.25	31 mix
4 blk	764@134.50	4 blk bwf
7 blk	774@134.00	9 mix
6 mix	741@133.00	28 mix
6 mix	795@132.50	8 blk
6 blk bwf	788@132.00	7 blk
5 char	787@131.00	43 mix
7 blk	769@125.50	29 blk
9 red	841@132.75	7 mix
23 mix	860@130.00	10 blk
171 blk bwf	879@129.85	52 mix
4 mix	840@129.25	4 blk
6 mix	892@127.75	68 mix
14 red	945@130.75	30 blk bwf
71 blk	945@128.75	104 blk
19 mix	901@128.60	19 mix
71 mix	924@128.00	28 blk
24 mix	979@128.00	4 mix
5 blk	1046@125.00	15 mix
STEERS	54 mix	949@129.60
4 blk	565@164.00	27 mix
5 blk	597@145.00	26 mix
4 blk	648@149.00	14 blk bwf
4 blk	658@145.50	6 blk bwf
4 mix	683@144.25	14 mix
4 blk bwf	673@143.00	

**THANK YOU FOR ALL OF YOUR CONTINUED SUPPORT!
YOUR BUSINESS ALWAYS APPRECIATED!**

For Cattle Appraisals Call:
BRODY PEAK, 620-343-5107 GLENN UNRUH, 620-341-0607
LYLE WILLIAMS, Field Representative, 785-229-5457
WIBW 580 - 6:45 A.M. Thurs.; KVOE 1400 - 6:30-6:45 A.M. Thurs. & Fri.
emporialivestock.com

Flint Hills barn quilts featured in new book

Flint Hills barn quilts are featured in the new book by author Suzi Parron, *Following The Barn Quilt Trail*. The Kansas Flint Hills Quilt Trail will host the barn quilt trail author and lecturer at two locations in September. Saturday, September 10, the KSFHQT will host the noted author at the Flint Hills Discovery Center in Manhattan, with a program at 10:00 a.m. and book signing following. A Prairie Talk by the noted author is scheduled at Pioneer Bluffs, Matfield



Showing the reserve champion market steer at the Wyandotte County Fair was Dakota Mortell. The steer was purchased by 7th Street Casino.

Green, for Sunday, September 11, at 1:30 p.m., and book signing following.

In April 2012, author Suzi Parron was in the Manhattan area to present a program and offer her first book, *Barn Quilts and the American Quilt Trail Movement*, to area barn quilt enthusiasts. A part of that 2012 visit was to follow the barn quilt movement through the Flint Hills of Kansas, including some of those photos and stories in her new book already in progress. A number of pages in the new edition do feature Flint Hills barn quilts and their stories and documents Parron's travels across the nation viewing barn quilts and interviewing their owners for their unique stories. "I found that barn quilts have stories behind them. Gathering those stories became a passion for me," says Parron.

Pre-registration is suggested for both events, with no cost to attend. Both, the Kansas Flint Hills Quilt Trail and Pioneer Bluffs do accept donations as non-profit organizations. To pre-register for the event at the Flint Hills Discovery Center, simply call 785-776-8829 or e-mail Marcia@manhattan.org. Pre-register for the event at Pioneer Bluffs by calling 620-753-3484, or e-mail lynn@pioneerbluffs.org.

The Kansas Flint Hills Quilt Trail actively promotes tourism and rural pride throughout the 22 county region of the Flint Hills. For more information on the Kansas Flint Hills Quilt Trail, follow the Trail on Facebook, or log on to www.ksflinthillsquilttrail.com.



The grand champion market steer at the Wyandotte County Fair was shown by Payten Knetter and purchased by June Beaver, Scott Coffman and Security Bank.

JC LIVESTOCK SALES INC.

Wednesday Sale, Hogs NOON • Cattle 12:30 PM

For the week of August 24, 2016:

STEERS	2	323	161.50	
5	450	184.00	5	468 157.00
4	484	178.00	5	532 151.00
11	615	168.50	4	564 149.50
3	554	167.50	66	711 145.00
9	688	160.00	6	782 132.50
12	665	159.25	14	730 131.25
61	829	146.35	4	885 128.50
65	809	145.75	2	918 122.00
6	754	145.50		
3	798	143.50		
1	890	135.50		

Bred Cows: No test
Pairs: No Test

Fat Hog Top: No Test

Sows: \$42.00 @ 550 lbs.

Pigs: \$21.00/hd 28 lbs. \$25.50/hd 44 lbs. \$37.00/hd 65 lbs.

HEIFERS

1 275 186.00 **Top Butcher Bull \$97.50 @ 2,215 lbs.**

Top Butcher Cow \$80.50 @ 1,670 lbs.

CONSIGNMENTS FOR WEDNESDAY, AUG. 31:

25 Blk X Strs/Hfrs.....600-675 lbs.Weaned

120 Blk X Strs.....750-850 lbs.

60 Blk X Hfrs.....700-800 lbs.

PLUS MORE BY SALE DAY!

If you need assistance in marketing your cattle please call & we will be happy to discuss it with you.

Visit our new website at jccclivestock.com

JUNCTION CITY, KANSAS • Barn Phone 785-238-1471
Seth Lauer 785-949-2285, Abilene

KARL LANGVARDT
785-499-5434
Cell: 785-499-2945

MITCH LANGVARDT
785-238-1858
Cell: 785-761-5814

LYNN LANGVARDT
785-762-2702
Cell: 785-761-5813

CLAY CENTER LIVESTOCK SALES INC.

Cattle sales Tuesday, 11:00 AM.

For the week of August 23, 2016:

STEERS	2	250	560.00/hd	
2	413	167.00		
3	557	165.00		
5	692	154.75		
2	708	144.75		

Top Butcher Cow: \$82.00 @ 1,410 lbs.

Top Butcher Bull: \$98.50 @ 1,960 lbs.

Bred Cows: No Test

Pairs: No Test

HEIFERS

3 277 173.00

2 605 148.75

12 680 143.75

5 742 139.75

3 670 133.00

NEXT SHEEP & GOAT SALE: SEPTEMBER 3
Nice Selection of Used Equipment (sells at 11 am)

- 2 mini gelding donkeys
- 2 Registered Dorper ewe lambs
- 10 Dorper wether lambs
- 70 Suffolk X lambs, 50-70 lbs.
- 20 Boer kids, 60-70 lbs.
- (1) Standard Jenny with 2 week old foal

NO CATTLE SALE: TUESDAY, SEPT. 6
DUE TO LABOR DAY HOLIDAY!

Clay Center, Ks • Barn Phone 785-632-5566
Clay Center Field Representatives:
Tom Koch, 785-243-5124 Lance Lagasse, 785-262-1185

FEED

THE KEY FEEDS

"The Key To Successful Feeding"

Anaplasmosis?

What is the solution?

We have cubes with chlortetracycline.

Call Us Now so we can help you maximize your feedstuffs, livestock productivity and greenbacks in your pocketbook!

FOURTH & POMEROY ASSOCIATES, INC.
Joseph Ebert, General Manager
P.O. Box 516, Clay Center, KS 67432
785-632-2141 • WATS 1-800-432-7423

Plan beef herd genetics on consumer desires

By Hannah Johlman
Cattlemen have focused on quality from the beginning. Their success at delivering cattle that perform for the next owner kept them in business through market ups and downs. The approach seems to work, but can it keep working in an era of relatively higher beef prices?

Mark McCully, vice president of production for the Certified Angus Beef® brand (CAB®), challenged producers at the inaugural Canadian Beef Industry Conference to consider looking at their business in reverse.

“We know genetics are important,” he said. “We know health management is important at the ranch and at the feedyard – but they’re also critically important to consumer satisfaction, which ultimately drives demand for that product.”

And that, he said, brings profitability to the whole system.

“Let’s start with the consumer and work our way backwards,” McCully said in the August 11 presentation in Calgary, Alberta, Canada. “That’s how we will most ef-

fectively hit the consumer target.”

Showing a perfectly grilled and plated steak, he encouraged ranchers and feedyard operators to evaluate how their management decisions affect the end product. He reminded everyone that marbling is the basis of quality grading systems and highly correlated to consumer satisfaction.

“Adding that takes nothing away from cow herd performance but adds much to the value of the end product,” he said.

Improved marbling starts with genetics, as carcass traits are highly heritable. McCully shared data from the USDA Meat Animal Research Center that shows Angus cattle surpass all other breeds in ability to marble, even though there is much variation within all breeds.

That’s why producers use expected progeny differences (EPDs) as comparison tools, he said, noting recommendations in CAB’s “Best Practices Manual” available online. DNA-based tools can also help select heifers with increased marbling potential.

Royal Valley FFA member wins State Proficiency Award

A member of the Royal Valley FFA chapter was recognized for having one of the best career development programs in the state at the 88th Kansas FFA State Convention, June 1-3, 2016, on the Kansas State University campus.

Jenna Thurman received a State FFA Proficiency Award in Agricultural Education during the convention for outstanding accomplishments she has made in developing programs that will prepare her for a career in agriculture. This award is sponsored by the Larry Gossen Family and the Harmon Bliss Family.

The proficiency award program recognizes students for exceptional accomplishments and excellence in a Supervised Agricultural Experience (SAE) program. This program al-

lows students to set goals and gain real-world experience in a chosen area of the agriculture industry.

Jenna’s SAE is heading up a project called Growing Third Grade, made possible by a grant she received from Sodexo. She traveled to third-grade classrooms and taught them about growing their own food. Each student then planted different vegetable seeds and took the plants and a bag of corn seed home at the end of the school year. Her hope is that her students will learn life-long skills so they can continue to produce their own food. Jenna plans to attend Allen County Community College and eventually become an agricultural education teacher.

Jenna is the daughter of Lisa Thurman. Her advisor is Kim Mitchell.

Once calves are born, beef quality is maximized with proper care.

“It boils down to what those things are that impact marbling,” McCully said. “Health and management, nutrition and creep feeding in particular. Know and be aware that the nutritional management of the calf while he’s still on the cow can affect weaning, and that calf’s marbling ability.”

A slide of a steer chasing men over a cliff demonstrated the importance of selecting for docility.

“We all know disposition is important from the family aspect,” McCully said. “They’re also hard to deal with, they’re hard on equipment and they produce a low-quality calf in the end.”

He encouraged producers to establish benchmarks and measure progress, keeping records even after the sale.

The market price shifts have more ranchers looking at retained ownership through the feedyard phase, but if that’s not a possibility, McCully said there’s no reason to waste any of the hard work and planning that went into their cattle.

“A feeder usually gets a set of cattle and knows almost nothing about them,” he said. “There’s no owner’s manual with that set of cattle.”

Such cattle are often capable of better, but can be mismanaged in the feedyard, simply for lack of information. To prevent that disconnect, McCully suggested ranchers and feeders work together. Those who sell should share health and genetic background, and those who buy should give feedback on performance and carcass merit.

“Typically, with no background on the cattle, they

are managed like the average,” he said. “What we should be doing in an efficient system is managing those cattle to their genetic ability. Do we take them a little bit farther, to maximize their marbling? Or at what point are we just wasting feed on those cattle that don’t have the ability to hit a high-quality target?”

Missed opportunities only detract from profitability throughout the system.

Beyond marbling, McCully discussed options to improve beef tenderness.

“While historically we’ve dealt with the issue through aging and other post-mortem techniques, identifying and eliminating those problem genetics should be a goal for cattlemen,” he said, noting the ability to measure and select for tenderness will improve with new technology.

Finally, McCully suggest-

ed being mindful of the size of cattle.

“We do get a lot of questions about carcass size and ribeye area,” he said. “Cattlemen need to think about ramifications as we look further down the chain.”

Showing steaks cut from different size ribeyes, he said, “The thinner steak from the bigger ribeye is probably harder to prepare to the perfect degree of doneness. Overcooking this steak jeopardizes the consumer’s experience.

Not suggesting a switch to smaller animals, McCully simply said the concern calls for balance.

“We have to have pounds for this to be a sustainable business. That’s ultimately what we’re selling,” he acknowledged. “All these things are important. But we have to make sure we’re not losing sight of the consumer’s eating satisfaction.”

Russell Livestock, LLC
720 S. Fossil, Russell, KS

SPECIAL COW SALE

Thursday, September 1st at 12:30pm

Feature Consignor Libery Ranch (Plainville, KS)

Reduction of Fall Cows

(Ranch mngr. Mike Smith, 785-737-6053)

- 120 LimFlex & Angus cows, 4-6 yrs
- 20/20 LimFlex & Angus pairs, 4-6 yrs
- 30 LimFlex & Angus cows, solid mouth, calving now

Other Consignments:

- 25/25 blk pairs, 3-5 yrs
- 50 blk fall bred cows, 4-6 yrs
- 20/20 mix pairs, older
- 15 mix fall bred cows, older
- 41 blk & red Angus fall bred cows, 5-6 yrs

Regular Thursday Auction To Follow

For more info:

Greg Carey: 785-483-1455 Barn : 785-483-2961

Upcoming Sales:

Special Calf Sales:

September 15th (over 1000 on books now)

October 13th, 27th, November 10th, December 8th

Special Cow Sales:

November 17th, December 22nd

WASHINGTON COUNTY LIVESTOCK, LLC
Locally owned & operated
WASHINGTON, KS – PHONE 785-325-2243
Fax: 785-325-2244
* * Sale Every Monday at 1 PM * *

If you have cattle to sell, please call us anytime!

Results from 8-22-16

COWS			
1 Black	970@97.00	1 Black	1325@76.00
1 BWF	1275@87.00	1 Black	1175@76.00
1 Holstein	1665@86.00	1 Holstein	1600@75.50
1 Holstein	1070@82.50	1 RWF	1295@75.50
1 Black	1670@82.50	1 Holstein	1420@75.00
1 Black	1280@82.00	1 Holstein	1225@75.00
1 Red	1525@81.50	1 Charolais	1180@75.00
1 Holstein	1320@80.50		
1 Holstein	1240@80.00	HEIFERS	
1 Holstein	1780@79.50	1 Black	240@475.00/Head
1 Holstein	1160@79.00	9 Black	288@194.00/CWT
1 Holstein	1070@79.00	2 Black	323@186.00/CWT
1 Holstein	1720@78.75	15 Black	385@176.00/CWT
1 Holstein	1230@78.50		
1 Black	1195@78.00	STEERS	
1 Holstein	1720@77.50	3 Black	273@209.00/CWT
1 Red	1325@77.00	8 Black	284@207.00/CWT
1 Holstein	1670@76.00	20 Black	405@187.00/CWT
		8 Mix	426@184.50/CWT
		7 Mix	531@164.00/CWT

Don't Forget the Video as an option to market your cattle

View our live auctions at www.lmauctions.com

Manager: Matt Kruse, 785-556-0715
Fieldman: Terry Ohlde: 785-747-6554

View our website for current market report!
www.washingtoncountylivestock.com

P.O. Box 267 Eureka, KS 67045
620-583-5008 Office 620-583-7475

Sale Every Thursday at 11:30 a.m. Sharp

On Thursday, Aug. 25, we had 1,206 head of cattle on a lower market.

STEERS

10 blk	555@170.75	17 bkred	719@139.50	9 blk	624@141.00
4 redAng.	524@163.00	13 bk	852@139.00	10 bwfrbf	653@140.00
5 bk bwf	544@161.00	29 rdChar	867@138.60	16 bwfrbf	674@138.50
6 blk	661@161.00	17 Limo x	713@138.00	13 bkred	624@138.25
5 bk bwf	618@160.00	10 bkbfw	799@137.00	17 bkred	629@136.75
6 redAng.	630@153.00	10 bwfrbf	900@133.00	7 blk	649@135.50
9 blk	721@148.25	10 bk bwf	840@132.75	11 bkbfw	754@132.00
17 bkbfw	721@148.00	7 blk	1007@130.00	9 bkbfw	753@132.00
7 bk bwf	684@147.50	11 blk	1028@129.25	25 bk bwf rbf
12 Limo x	585@145.00	29 mix	996@129.00	766@131.75
10 bkred	703@144.50			15 LimoX	671@131.75
11 bk red	720@143.25	HEIFERS		16 bkChar804	@131.00
19 bk bwf	787@142.00	6 Limo x	497@152.00	13 bkred	712@130.00
23 bkbfw	783@142.00	13 bkbfw	427@149.00	7 blk	779@127.00
60 bkbfw	839@141.90	4 redAng.	529@148.00	5 bwf	927@125.00
12 bkred	649@141.00	8 bkbfw	621@142.50	4 blk	933@122.50

Butcher Cows: \$52-\$86.50, mostly \$75-\$81, \$1-3 lower but very active.
Butcher Bulls: \$97.50-\$106, mostly \$100-\$104, \$1-3 lower but very active.

BUTCHER COWS	2 bwf	1318@80.00	
7 blk	1071@886.50	BUTCHER BULLS	
1 yellow	1210@82.00	1 blk	2200@106.00
1 blk	1335@82.00	1 wf	1675@105.00
2 blk	1430@81.50	1 wf	1900@103.00
2 blk	1523@81.50	1 blk	2100@103.00
1 blk	1540@80.50	1 blk	2110@102.00
2 blk	1368@80.00	1 wf	2005@101.50
2 bwf rbf	1558@80.00		

EARLY CONSIGNMENTS FOR SEPTEMBER 1:

- 52 blk Sim x str & hfrs, 600-800 lbs, homeraised, weaned, & vac.
- 43 blk red str & hfrs, 450-650 lbs, home raised & vac.

SPECIAL CALF SALE ON SEPTEMBER 15:

- 300 blk Char x str & hfrs, 450-800 lbs, home raised & vac.

We appreciate your business!

Ron Ervin - Owner-Manager
Home Phone - 620-583-5385
Mobile Cell 620-750-0123
Austin Evenson- Fieldman
Mobile Cell 620-750-0222
If you have any cattle to be looked at call Ron or Austin

Holton Livestock Exchange, Inc.
1/2 mile East of Holton, KS on 16 Highway
Livestock Auction every Tuesday at 12 NOON
Serving the Midwest Livestock Industry for 64 Years!
****STARTING TIME: 12:00 NOON****

MARKET REPORT FOR TUESDAY, AUGUST 23, 2016
RECEIPTS: 1061 CATTLE

STEERS	4 hols str 431 112.00
2 bwf bulls 285 202.00	5 hols str 527 102.00
6 blk red str 455 180.00	
3 blk bwf str 501 177.00	HEIFERS
3 blk str 530 177.00	2 blk rfw hfrs 337 184.00
6 blk str 517 175.00	3 blk hfr 428 171.00
5 blk bwf str 565 169.75	2 blk char hfrs 427 168.00
4 blk bwf str 592 169.50	5 blk hfrs 384 163.00
11 mix str 546 167.00	8 blk hfrs 496 156.00
6 blk str 571 164.50	17 blk bwf hfrs 654 152.25
7 blk red str 620 164.50	6 blk bwf hfrs 530 152.00
9 mix str 652 159.00	9 blk bwf hfrs 639 151.00
4 blk str 665 157.00	4 blk bwf hfrs 631 144.50
9 blk bwf str 667 155.50	6 blk bwf hfrs 615 140.25
12 blk bwf str 716 155.50	3 blk hfrs 736 139.00
5 blk str 671 154.50	12 mix hfrs 757 139.00
32 mix str 694 154.00	33 blk red hfrs 703 139.00
14 blk red str 652 151.00	14 blk rfw hfrs 746 137.00
17 mix str 753 147.75	40 mix hfrs 705 137.00
75 blk str 835 145.00	206 mix hfrs 794 136.85
7 blk bwf str 800 140.00	4 blk bwf hfrs 675 136.50
7 blk bwf str 752 138.75	10 blk red hfrs 874 129.00
3 blk str 1020 129.25	21 blk hfrs 983 127.00

OCTOBER 1-FALL CONSIGNMENT AUCTION
SALE BILL ADVERTISING DEADLINE-SEPTEMBER 7

Dan Harris, Auctioneer & Owner • 785-364-7137
Danny Deters, Corning, Auct. & Field Rep • 785-868-2591
Dick Coppinger, Winchester, Field Rep. • 913-774-2415
Steve Aeschliman, Sabetha, Field Rep. • 785-284-2417
Larry Matzke, Wheaton, Field Rep. • 785-268-0225
Craig Wischropp, Horton, Field Rep. • 785-547-5419
Barn Phone • 785-364-4114
WEBSITE: www.holtonlivestock.com
EMAIL: dan@holtonlivestock.com

View our auctions live at "lmauctions.com"

EL DORADO LIVESTOCK AUCTION, INC.
316-320-3212
Fax: 316-320-7159
2595 SE Highway 54, P.O. Box 622,
El Dorado, KS 67042

Market Report - Sale Date 8-25-16. Head count: 1,758.
300-400 lb. steers, \$130-\$179; heifers, \$125-\$170; 400-500 lb. steers, \$125-\$173; heifers, \$120-\$161; 500-600 lb. steers, \$120-\$154; heifers, \$120-\$142; 600-700 lb. steers, \$115-\$144.50; heifers, \$115-\$134; 700-800 lb. steers, \$115-\$135; heifers, \$110-\$128. Trend on Calves: Choice str & hfr calves, steady. Trend on Feeder Cattle: Feeder steers & heifers, \$3-\$5 lower on a limited test. Butcher Cows: High dressing cows: \$72.50-\$81; Avg. dressing cows: \$60-\$72.50; Low dressing cows: \$40-\$60. Stock Cows: Bred Cows \$1,000-\$2,050; Cow/Calf Pairs: \$1,300-\$2,475. Butcher Bulls: Avg. to high dressing bulls \$87.50-\$96.50. Trend on Cows and Bulls: Butcher Cows steady; Butcher Bulls \$2 lower.

"A GREAT BIG THANK YOU to everyone that came out to the Special cow sale!"

EARLY CONSIGNMENTS:
THURSDAY, SEPTEMBER 1
Keep checking the website for updates!

THURSDAY, SEPTEMBER 8
EARLY CONSIGNMENTS:

- 50 blk fall calves, shots weaned, 600-750 lbs.
- 39 Angus steers & heifers, weaned 90 days, 750 lbs.
- 100 black steers & heifers, 800 lbs.
- 35 steers & heifers, weaned
- 100 steers & heifers, weaned 90 days, shots, 700 lbs.

We welcome your consignments!
If you have cattle to consign or would like additional information, please call the office at 316-320-3212
Check our website for updated consignments:
www.eldoradolivestock.com

Chris Locke (316) 320-1005 (H) (316) 322-0675 (M)	Steven Hamlin (602) 402-6008 (H) (620) 222-1199 (M)
Larry Womacks, Fieldman (620) 394-3273 (H) (620) 229-0076 (M)	Van Schmidt, Fieldman (620) 367-2331 (H) (620) 345-6879 (M)

Cattle Sale Every Thursday 11:00 AM

Maximize next year's yields by controlling volunteer wheat now

By Jordan Hildebrand

Farmers can't control environmental factors like weather in order to give their wheat crop a healthy boost, but they can help curb disease by controlling volunteer wheat. So far, the state's wet summer has enabled volunteer wheat to take root and grow rapidly. While it may sound tempting to graze these leftovers, volunteer wheat can pose a major threat to the next wheat crop due to increased disease infections and pest infestations.

"About 60-70% of the management practices a wheat producer takes to maximize yield on their farm occurs before planting, including a soil test to help determine fertility needs, variety selection, determining planting date and rate, etc. Among these practices, controlling volunteer wheat

is of utmost importance," said Romulo Lollato, Wheat and Forages Extension specialist at Kansas State University.

According to the K-State Department of Agronomy, volunteer wheat within a half-mile of a field that will be planted to wheat should be completely dead for at least two weeks prior to wheat planting. Doing so will help control wheat curl mites, Hessian fly and greenbugs this fall.

"In the past, farmers have always left volunteer wheat for grazing," said Jason Ochs, a Hamilton County wheat farmer. "Years ago they could leave that volunteer wheat and it didn't hurt anything. But in today's environment we are just not able to do that anymore."

One of the major risks associated with volunteer wheat is the wheat streak

mosaic virus complex. These viruses can cause severe economic damage, and in most cases infection can be traced to a nearby field of volunteer wheat. The diseases are carried from volunteer wheat to newly planted wheat, and can cause stunting and yellow streaking on the leaves of the plant.

"Yield reductions may not be 100% in all cases, but very often yield maps show 60-70% yield reduction in areas affected by wheat streak mosaic as compared to the average yield for a wheat field," said Lollato. "It will not only affect your wheat crop, but your neighbor's as well. Thus, help protect the Kansas wheat crop: make sure any volunteer wheat in your field is dead at least two weeks prior to planting your wheat."

Wheat streak mosaic virus is carried from volunteer to newly planted wheat by the wheat curl mite; tiny, white mites that are too small to be seen with the naked eye. These small, but heavy hitting, insects use the wind to carry them to new hosts, which can take them as far as a half mile away.

Hessian flies are also an issue found lurking in volunteer wheat. These insects survive over the summer on wheat stubble and cause significant damage in the eastern two-thirds of the state. Tillers in planted

wheat may be stunted due to the antics of Hessian flies, and may ultimately lodge during harvesting. According to K-State Agronomy, a whole stand may be lost in heavy infestations.

Other pests can also reside in volunteer wheat. These pests can include Russian wheat aphids, Banks grass mites and chinch bugs. In addition, volunteer wheat and other weeds use up large amounts of soil moisture.

Destroying volunteer after the new wheat emerges is too late, according to the K-State Agronomy.

Tillage and herbicides are the two options available for volunteer control, but farmers need to start these methods early, in order to leave time for a second chance if control is not complete.

"The biggest thing is that we all have got to work together as farmers and change with the times," said Ochs. "This is a different time than it was 15 or 20 years ago when we didn't have to control volunteer wheat."

For more information on controlling your volunteer wheat, head to agronomy.k-state.edu.

Students selected to receive sorghum scholarships

The National Sorghum Foundation has selected four students to receive scholarships for the 2016-2017 school year.

"The overall quality of our applicants was impressive, representing ten universities from eight states," said Bruce Maunder, National Sorghum Producers research adviser. "This year's winners embody the hard work and enthusiasm of the sorghum industry."

The Sorghum Challenge scholarship includes \$1,500

for tuition as well as a paid trip to Washington, D.C., to meet with their Congressional representatives, coinciding with NSP's legislative fly-in. Two winners were awarded Sorghum Challenge scholarships. The first recipient is Ciera Houlton from Kiowa. Houlton is a plant and soil science major at Oklahoma State University. The second recipient is Samantha L'Ecuier from Morrowville, an agronomy major at Kansas State University.

L'Ecuier also receives the Dr. Darrell Rosenow Memorial Scholarship worth \$1,500 toward tuition. Established in 2010, the scholarship is awarded to a student enrolled in an agriculturally based department related to agronomy, plant pathology and plant breeding with an emphasis on sorghum. Rosenow spent 40 years pioneering hybrid sorghum breeding at Texas A&M AgriLife Extension Service.

New this year, the Sorghum Feed and Food Scholarship provides a \$1,500 award for an undergraduate student studying sorghum through either animal science or human nutrition. The first recipient is Alexis Powell from Houston, Texas. Powell is a food science major at Alabama A&M University.

The Maunder/NSP Sorghum Center scholarship is shared between Kansas State University and the NSP Sorghum Center. The scholarship is worth \$1,000 toward tuition. This year's recipient is Macy Sherwin, a food science major from Lenexa.

NSP congratulates all winners on their achievements. For more information about the National Sorghum Foundation or these scholarship programs, visit sorghumgrowers.com/sorghum-foundation.



Leah Mueller showed the grand champion market goat at the Wyandotte County Fair. The premium buyer was Leavenworth County Co-op.

Grass & Grain Weather Report

Aug. 30, 2016

Seven Day Forecast

TUESDAY
Scat'd T-storms
High: 85 Low: 65

WEDNESDAY
Mostly Sunny
High: 86 Low: 66

THURSDAY
Sunny
High: 88 Low: 67

FRIDAY
Sunny
High: 91 Low: 69

SATURDAY
Sunny
High: 94 Low: 70

SUNDAY
Partly Cloudy
High: 90 Low: 68

MONDAY
Isolated T-storms
High: 87 Low: 65

Local UV Index

0-2: Low, 3-5: Moderate, 6-7: High, 8-10: Very High, 11+: Extreme Exposure

In-Depth Local Forecast

Today we will see partly cloudy skies with a 40% chance of showers and thunderstorms, high temperature of 85°, humidity of 58%. The record high temperature for today is 107° set in 1905. Expect partly cloudy skies tonight with a 40% chance of showers and thunderstorms, overnight low of 65°.

Last Week's Almanac

Date	Hi/Low	Normals	Precip
8/18	93/68	91/65	0.00"
8/19	92/67	91/65	1.85"
8/20	76/58	90/65	0.00"
8/21	82/52	90/64	0.00"
8/22	85/60	90/64	0.00"
8/23	89/70	90/64	0.00"
8/24	86/68	89/64	0.00"

Rainfall last week: 1.85"
Normal rainfall: 0.73"
Departure from normal: +1.12"
Average temp last week: 74.7°
Average normal last week: 77.3°
Departure from normal: -2.6"

This Week's Sun & Moon Chart

Day	Sunrise	Sunset	Moonrise	Moonset
Tuesday	6:54 a.m.	7:58 p.m.	5:07 a.m.	7:03 p.m.
Wednesday	6:55 a.m.	7:57 p.m.	6:08 a.m.	7:39 p.m.
Thursday	6:56 a.m.	7:55 p.m.	7:08 a.m.	8:12 p.m.
Friday	6:57 a.m.	7:53 p.m.	8:07 a.m.	8:44 p.m.
Saturday	6:57 a.m.	7:52 p.m.	9:04 a.m.	9:14 p.m.
Sunday	6:58 a.m.	7:50 p.m.	10:01 a.m.	9:45 p.m.
Monday	6:59 a.m.	7:49 p.m.	10:57 a.m.	10:16 p.m.

Weather History

Aug. 30, 1982 - A tropical depression brought torrential rains to portions of southern Texas. Up to 12 inches fell south of Houston and as much as 18 inches fell southeast of Austin. The tropical depression spawned 14 tornadoes in three days.

Growing Degree Days

Date	Degree Days	Date	Degree Days
8/18	30	8/22	22
8/19	30	8/23	30
8/20	17	8/24	27
8/21	17		

Sell At St. Marys

Or Buy Cattle By Auction STARTING TIME 10:30 AM Tuesdays

We sold 1847 cattle August 23. There was good demand for steer and heifer calves at prices that were steady to \$5.00 higher. Feeder steers and heifers sold steady to \$3.00 lower. Cows and bulls sold at steady prices.

STEER & BULL CALVES		STOCKER & FEEDER STEERS	
3 bwt str	338 @ 184.00	9 blk/bwf str	562 @ 173.00
14 blk/bwf str	484 @ 183.50	26 blk/bwf str	582 @ 167.50
4 blk/bwf str	380 @ 180.00	5 blk/bwf str	678 @ 165.00
10 blk str	523 @ 180.00	18 blk/bwf str	683 @ 158.50
2 blk/sim str	415 @ 177.00	7 blk str	712 @ 156.00
1 bwt str	445 @ 177.00	17 blk/bwf str	653 @ 155.50
1 blk str	510 @ 177.00	7 blk/bwf str	581 @ 155.00
2 bwt str	448 @ 173.50	8 blk/red str	635 @ 154.00
4 x-bred bulls	438 @ 162.00	20 blk/char str	747 @ 154.00
2 blk str	488 @ 161.00	7 blk str	716 @ 153.00

STOCKER & FEEDER HEIFERS		COWS & HEIFERETTES	
12 blk hfrs	588 @ 149.00	1 blk hfrt	700 @ 120.00
26 blk/bwf hfrs	637 @ 144.50	1 blk cow	1095 @ 84.00
66 blk/bwf hfrs	681 @ 144.35	1 blk hfrt	885 @ 83.00
140 blk/bwf hfrs	712 @ 142.25	1 bwt cow	1245 @ 82.50
5 blk/bwf hfrs	684 @ 140.50	1 blk cow	1450 @ 81.00
4 blk hfrs	600 @ 140.00		
45 mix hfrs	646 @ 140.00		
7 blk/bwf hfrs	749 @ 139.50		
3 red/blk hfrs	572 @ 133.00		
13 blk/red hfrs	688 @ 133.00		
3 blk/char hfrs	857 @ 131.00		
3 x-bred hfrs	807 @ 129.50		
4 blk hfrs	855 @ 128.00		
3 blk hfrs	1010 @ 116.00		

HEIFER CALVES	
39 blk/bwf hfrs	538 @ 155.50
7 blk/bwf hfrs	539 @ 155.00

COW/CALF PAIRS	
2 blk cows/cvs	@ 1350.00
1 blk cow/cf	@ 1075.00
2 blk cows/cvs	@ 990.00

BULLS	
1 blk bull	1385 @ 102.50

BRED COWS	
9 mix cows	@ 1135.00
1 blk cow	@ 1100.00
1 blk cow	@ 950.00

CONSIGNMENTS FOR AUG. 30:

- 10 blk cows, 3-5 yrs old, bred blk bulls, start calving September 15
- 120 blk steers, 575-650 lbs., weaned, vaccinated
- 28 blk heifers, 600-650 lbs., weaned, vaccinated
- 30 Angus heifers, 450-600 lbs., vaccinated
- 50 steers & heifers, 500-600 lbs., vaccinated
- 40 blk str & hfrs, 650-700 lbs., weaned, vacc.
- 37 black heifers, 750-775 lbs., off grass
- 15 Angus steers, 725-750 lbs., off grass
- 100 black Charolais steers, 700-775 lbs., off grass
- 65 black steers, 825-850 lbs., off grass
- 62 black steers, 850-875 lbs., off grass
- 70 black steers, 875-900 lbs., off grass
- 116 black steers, 925-950 lbs.
- 110 black Charolais steers, 900-925 lbs., off grass

PLUS MORE BY SALE TIME!

WATCH OUR AUCTIONS LIVE ON DVAuctions.com

Our **CONSIGNMENTS** can now be viewed after 12 Noon on Mondays by going to www.grassandgrain.com & logging onto the online subscription

FOR INFORMATION OR ESTIMATES:

REZAC BARN ST. MARYS, 785-437-2785
DENNIS REZAC . . . ST. MARYS, 785-437-6349
DENNIS' CELL PHONE 785-456-4187
KENNETH REZAC . . ST. MARYS 785-458-9071

LELAND BAILEY . . . TOPEKA, 785-286-1107
LYNN REZAC . . . ST. MARYS, 785-456-4943
REX ARB MELVERN, 785-224-6765

Toll Free Number.....1-800-531-1676

Website: www.rezACLIVestock.com
AUCTIONEERS: DENNIS REZAC & REX ARB

RezAC

Livestock Commission Company, Inc. St. Marys, Ks.