

Since 1954

GRASS & GRAIN

Published by AG PRESS

56th Year

No. 36

November 2, 2010

\$1.00

Daylight Saving
Time Ends Nov. 7



As of last Thursday, Farmway Co-op, Inc. in Leonardville had dumped approximately 40,000 bushels of milo on the ground. Manager Dan Higgins reported that most of their 950,000-bushel storage capacity is filled with corn and beans. He estimated that the corn and bean harvest is 95% complete, and milo 35-40% done.

Kansas elevators face fast harvest, storage shortage

(AP) — Kansas elevators still flush with grain from last year's wheat harvest are struggling to keep up with a rapid fall harvest that has resulted in millions of bushels of grain being stored on the ground.

Warm, dry weather has helped farmers get their crops in from the fields much faster than a year ago, when wet weather extended fall cutting past Christmas. The Hutchinson News reported Saturday that the rapid harvest has made it difficult to transport the grain — especially with a corn harvest that, according to the Kansas Agricultural Statistics Service, looks to be the largest since 1933.

Farmers planted 700,000 more acres of corn this year than in 2009, the highest

amount planted since 1936. It's the second-largest Kansas corn crop on record.

That crop, plus a sizable wheat crop, has the state's elevators re-evaluating their storage capacities.

Ken Jameson, vice president of the grain division at Garden City Co-op, said his cooperative plans to add about 2.4 million more bushels of space this year. Still, the western Kansas cooperative has 2.1 million bushels of corn on the ground and 3 million more bushels ready for quick ship, which are sales that go from the elevator directly to an end user.

Garden City's WindRiver Grain, which is affiliated with the cooperative, has more than 5 million bushels on the ground along with 2 million to 3 million bushels of milo.

Statewide, elevators have increased their storage space by 10 percent in the past five years, allowing them to store grain while waiting for good marketing opportunities, said Tom Tunnell, executive director of the Kansas Feed and Grain Association.

State-licensed elevators have been authorized to store as much as 26 million bushels on the ground.

"The fall harvest follows a record fall harvest from the previous year," said John McClelland, general manager of Garden City Co-op. "While most farmers would report their individual yields are down 10 to 15 percent from a year ago, we didn't

have any swaths of hail like we usually have in the past."

KASS reported last month that winter wheat still in storage in September was the largest amount this late in the season since 1987. There were 400 million bushels of wheat in storage, up 14 percent from a year ago.

"The wheat market has been a wait-and-hold type market," said Eric Lang, Mid-Kansas Co-op's director of southeast operations. "Terminals are doing a lot of the same things. When the market dictates you hold on to grain, you do so to the best of your ability."

KSU receives \$2 million to improve food safety in beef and dairy cattle systems

A Kansas State University epidemiologist will use a \$2 million grant from the U.S. Department of Agriculture for improving food safety in beef and dairy cattle systems in the U.S. and Canada.

H. Morgan Scott, a professor in K-State's department of diagnostic medicine and pathobiology, will collaborate on the project with researchers from the University of Guelph, Angelo State University, Texas Tech University, Texas A&M University, Cornell University, Colorado State University and the Public Health Agency of Canada. The progress and achievements of the integrated project will be evaluated by K-State's office of educational innovation and evaluation.

"Our overall goal is to identify, evaluate and implement practical interventions for managing antibiotic resistance in beef and dairy cattle systems," Scott said. "We focus on the long-standing problem of resistance emergence, dissemination and persistence among enteric bacteria. If pathogenic bacteria resistant to antibiotics enter the food chain, treatment of humans can be complicated."

Scott said researchers will use a variety of methods to assess, and then improve, the quality of education and extension materials, such as veterinary curricula and commodity

specific prudent-use guidelines.

"Threats to the continued use of several common agricultural formulations of antimicrobials are looming in the form of FDA guidance documents and draft federal legislation," Scott said. "Having scientifically proven tools available to veterinarians and producers to counter bacterial resistance where and when it arises is essential to maintaining public trust in our abilities to manage threats to public health."

The costs to animal agriculture will be tremendous if certain classes or uses of antibiotics are no longer available, Scott said.

"The use of antibiotics for treatment and prevention of bacterial infections in beef and dairy cattle is essential for producing safe and wholesome food for consumers, for maximizing the welfare of animals, and for sustaining profitability in animal agriculture," he said.

"We want to employ molecular microbiology to discover the mechanisms underlying several paradoxical responses of resistant strains to antibiotic selection pressures," Scott said. "Next it will be critical to field-test practical interventions designed to effectively manage antibiotic resistance levels in production, as well as near-slaughter phases of beef and dairy cattle systems."

Scientifically proven interventions will be shared with interested parties and decision makers in the cattle industry, who will be encouraged to further evaluate those methods in their production systems, Scott said. Decision-makers also will be warned of ineffective interventions.

Scott said collaborating with other schools and working outside the research lab are important parts of the project. He and his lab students will visit feed yards and dairy production facilities to work directly with cattle.

"We plan to develop an integrated model to assess the temporal dynamics of antibiotic resistance and evaluate the effectiveness of interventions to mitigate its dissemination in cattle systems," Scott said. "This model will be available for education and extension purposes as a very effective demonstration tool. We also hope this will greatly enhance detection of early-resistant E. coli, and we will be able to better estimate animal-level prevalence of resistance carriage through enhanced surveillance. We expect that our new approach will yield earlier detection and characterization of resistance to critically important antibiotics."

Scott said the ultimate goal of the project is to come up with solutions that can be used quickly and effectively industry-wide.



The sun setting over Pfizenmaier's Pumpkin Patch west of Clay Center captures the essence of autumn.

Since 1954
**GRASS
& GRAIN**

Guest Editorial

By Steve Gilliland

Someone has said that "Gun control is not about guns, but about control." Last spring I wrote about Senate Concurrent Resolution No. 1, a proposal to amend the Kansas Constitution to clarify the language used therein to guarantee our individual right to keep and bear arms. After the column I received a couple emails basically telling me that our right to keep and bear arms is already guaranteed us in our state constitution and could never be taken away, (which is debatable), and that even if we lost that right at the state level, the U.S. Constitution guarantees it also and that we would never lose that right federally. I also find that debatable in today's world. I sincerely hope that both those assessments are

correct, but at this juncture of my life and given the direction our country and world have taken of late, I'm not as willing to take those rights for granted as I used to be. I promised to refresh your memory about this proposed amendment before the election, so here is your reminder with a little more background thrown in.

In the Kansas Constitution, the paragraph pertaining to our right to keep and bear arms begins with these words; "The people have the right to bear arms for their defense and security..." The proposed amendment changes that wording to read "A person has the right to keep and bear arms for the defense of self, family, home and state, for lawful hunting and recreational use, and for any other lawful purpose..."

An article in the October 4 Hutchinson News states that this gun issue can be traced back to a 1905 Kansas Supreme Court ruling in the case of the City of Salina versus Blakesly, in which the high court ruled that "the people's right" to bear arms was a collective right, meaning ONLY standing militias were entitled to bear arms, and then ONLY in defense of the state. Evidently the ruling was never enforced, and I commend the authors of this proposed amendment for being proactive in taking steps to see that it never is. The purpose of this amendment is clearly to clarify and personalize the language so that the right of each individual Kansan to bear arms can never be questioned.

This year, at my wife's request, I did something I've never done before; I got us early mail-in ballots so we can have the names and issues before us while we research the various candidates and issues. Because of

that, I can give you the exact wording of Constitutional Amendment Question No. 1 as it will appear on your ballot:

Explanatory Statement. The purpose of this amendment is to preserve constitutionally the right of a person to keep and bear arms for the defense of self, family, home and state, and for all other lawful purposes, including hunting and recreation.

A vote FOR this amendment would constitutionally preserve the right of a person to keep and bear arms for the defense of self, family, home and state, and for lawful hunting and recreational use, and for any other lawful purpose.

A vote AGAINST this amendment would provide for no constitutional right of a person to keep and bear arms for the defense of self, family, home and state, and for lawful hunting and recreational use and for any other lawful purpose.

Continued on page 3



By Lori Haresnape, Lebanon

I love this time of year. I especially love experiencing it in rural Kansas. As my children and I traveled along highways and our rural roads one cool Friday evening to take meals to the field, I found myself almost swelling, if you will, at the ambiance of our surroundings. I know... you're probably thinking "ambiance on the highway?" Absolutely.

I'm a very visual person and I love to take in the scenery as I travel, but admittedly, I've traveled these roads so many times I think I already know what I'm looking at. You know what I'm talking about. There's neighbor John's field of soybeans. Oh, and there's the spot where he must have answered his cell phone while planting. (Hey, we all no-

tice... and we've all veered a little off-course ourselves.) Even when someone is actually out in the field when you drive by, it still looks familiar. However, travel these roads after sundown during fall harvest, and everything just comes to life.

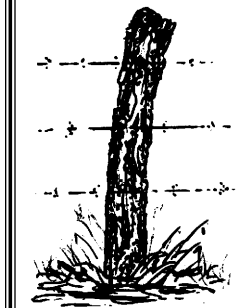
We met lit-up truck after lit-up truck, hauling the fruits of their labor – soybeans, corn – to grain elevators. We passed fields with combines, tractors and grain carts and, of course, more trucks. The fields were beautifully aglow from the lights of the machinery, families working into the night, even after the elevators close so all trucks are filled, ready for delivery as soon as they reopen in the morning. Occasionally we drove by a neighbor drilling his last acres of wheat into the ground, anticipating – and praying for – a bountiful crop next summer. Occasionally we were even blessed to find these scenes on both sides of us as we made our way through the county.

I actually found myself feeling a little sorry for people who live in the city. If only they could see what those of us in farm communities see. Though most Americans are generations removed from the farm, you'll often find many have an inner longing to get back to a simpler life; to get back to their roots. Of course, you and I know that life is not so simple on the farm, but it's a way of life that is still very appealing. I believe most Americans, given the opportunity to travel our roads, would still have the ability to recognize – perhaps even appreciate – not only the beauty of these scenes, but also our dedication to producing the world's food supply and our desire to be stewards of our land and animals.

The Learning Post

By Gordon Morrison
Concordia Rancher and
Former Agriculture Educator

Voter Fraud



Since this article will be printed in the November 2 issue of Grass & Grain, millions of Americans may be going to the polls on this day while you are reading the column. They will cast their ballots for the candidates they think will represent them best and who have the same convictions as they do in regard to the government and the role it should play in their lives. Those running for office are working hard to win; a victory would bring a prestigious job with many perks, often a good retirement, and power in decision making and control in government. Hopefully, most candidates have a sincere desire to help keep the U.S.A. a great nation.

Kris Kobach, running for Secretary of State, is concerned that voter fraud could be a means of stealing an election, especially where the race is close. If elected, he would make it mandatory that photo identification be required in order to vote. It is his hope that in time this requirement would extend beyond Kansas to be required in all states. He says that since 1998 there have been 36 reported cases of voter fraud in Kansas but contends this is only a small fraction of actual cases. In many states, especially in urban areas, the extent of voter fraud is much greater than in this state.

Voter fraud is not new to Kansas by any means. My research has been most interesting and revealing. The acts of violence over a major issue in elections in Kansas were so severe in the 1850s, before it became a state, that it was sometimes called "bleeding Kansas." The South wanted all new states to be pro-slavery, where owning slaves was permitted, while the Union, or northern states, favored their coming in as free states, where owning slaves would be illegal. Congress resolved the situation with a policy called "popular sovereignty," more commonly known as "squatter's sovereignty." The settlers or squatters in each territory would decide for themselves whether or not to allow slavery. This is when a lot of trouble began.

The territories of Kansas and Ne-

braska came under this plan in the Kansas-Nebraska Act. After Kansas became a territory in 1854, settlers from both the South and the North streamed in to vote in an election to determine whether Kansas would be pro- or anti-slavery. The pro-slavery forces won the election, but there was obvious fraud. In a district with 30 registered voters, there were 1601 ballots cast. It was easily determined that one pro-slavery man had signed all 1601 ballots. Pro-slavery judges assigned to decide on the disputed ballots chose to leave the state rather than face the abolitionists. The appointed governor of the territory did exercise his authority to throw out the election results and then later fled the Kansas territory.¹

The pro-slavery delegates offered a constitution that would declare Kansas to be for slavery, but it had to be ratified by the people of Kansas, who rejected it. All the scheming, voting and shenanigans in the conflict between the pro-slave bushwhackers, many from Missouri, and the free squatters from Kansas caused a delay in Kansas achieving statehood by four years. But finally a constitution was passed, and in 1861 Kansas was admitted to the union as a free state.

Blood flowed freely in Kansas during this time, when men like John Brown killed five pro-slavery men during a raid. Over fifty persons died in various small battles. The most devastating conflict was a raid by Quantrill and his men, who burned part of the town of Lawrence at daybreak and massacred around two hundred people.

Union guerilla soldiers of Kansas supported the squatters who favored a free state. They were known as Jayhawkers and I have read that they wore red leggings. Kansas University's mascot is the Jayhawk. To this day, when Missouri U. and Kansas U. play football, both teams feel the intensity of the contest, trying to make it another massacre, sports-wise.

¹Barkey, Paul, *On This Day*, Manhattan, KS, 2009, pg. 419.

COWPOKES®

By Ace Reid



"Hey, I came out pretty good on this swap, I got a broke rope, a spur, two boots, a pair of pliers, and got rid of a hoss and a feed bill!"

EARL...



"YEAH, THE FISHING IS GREAT AT THIS SPOT... THE CATCHING IS A BIT OF A PROBLEM, THOUGH."

Big Dry Syndicate

Since 1954
GRASS & GRAIN®
Published by AG PRESS

785-539-7558

Fax 785-539-2679

Editor — Donna Stewart Sullivan
gandgeditor@agpress.com

— Advertising Staff —

Steve Reichert • steve@agpress.com
Dennis Katzenmeier • dennis@agpress.com
agpress2@agpress.com

GRASS & GRAIN (USPS 937-880)

The newsweekly for Kansas and southern Nebraska, published each Tuesday at 1531 Yuma (Box 1009), Manhattan, KS by Ag Press, Inc. Periodicals postage paid at Manhattan, Kansas. Postmaster send address changes to: Ag Press, Box 1009, Manhattan, KS 66505.

Subscription — \$77 for 2 years. \$42 for 1 year, includes sales tax. Outside Kansas, \$49 for 1 year, \$91 for 2 years.

MEMBER OF
Associated Press

www.grassandgrain.com

Temple Grandin to speak at K-State Nov. 9

Temple Grandin, a world-renowned animal behaviorist and a high-functioning autistic, will speak at Kansas State University at 7 p.m. Tuesday, Nov. 9, in Forum Hall at the K-State Student Union.

The lecture, which will cover Grandin's personal and professional life, is free and open to the public. It also will be streamed live on the Web at <http://ome.ksu.edu/webcast/bci/blog/index.html>.

An HBO movie about Grandin recently won seven Emmy awards. Grandin didn't talk until she was 3 1/2 years old. She was diagnosed with autism in 1950, and her parents were told she should be institutionalized. Instead, Grandin developed her ability to think in pictures and see situations through the perspective of animals into a successful career as a livestock-handling equipment designer. She has now designed the facilities in which half

the cattle are handled in the United States.

Her first book, "Emergence: Labeled Autistic," stunned the world. Until its publication, most professionals and parents assumed that an autism diagnosis was virtually a death sentence for achievement or productivity in life.

Grandin's lecture is sponsored by Food for Thought, a grassroots group of K-State students who seek to bridge the gap between agriculture and consumers. The group includes undergraduate, graduate and veterinary students, as well as young alumni, and works under the guidance of faculty adviser Dan Thomson, the director of K-State's Beef Cattle Institute. More information about Food For Thought is available at the group's blog, <http://bloggingfoodforthought.blogspot.com>, on Facebook or on Twitter at <http://twitter.com/fftgroup>.

Guest Editorial —

Continued from page 2

There you have it in a nutshell, and I urge you to go to the polls and vote on Tuesday, November 2. And if you value your personal freedom to possess firearms for hunting, recreation and protection of your family, please vote YES on Constitutional Amendment Question No. 1. I look at it this way: no matter how firmly you feel the right to bear arms is personally guaranteed to you already, what do you have to lose by voting YES on this anyway . . . I'll let you decide that!

Steve can be contacted by email at stevegilliland@idk.com.net.

The 83rd National FFA Convention sets a record, says farewell to Dr. Larry Case

The 83rd National FFA Convention concluded on a high note; the organization set an all-time event attendance record with a total crowd of 54,942 members, advisors, sponsors and guests. And, the organization recognized the service of and bid farewell to its long-time national FFA advisor Dr. Larry D. Case, who will retire on Jan. 1, 2011.

"It's only fitting that we should set our all-time convention attendance record at Dr. Case's 26th and final convention," said National FFA Chief Operating Officer Dwight Armstrong. "It's clear that a substantial number of chapters around the country made the trip to celebrate with him before he retires."

During his onstage recognition, Case introduced his wife of 44 years, Joy, and their children and grandchildren. He addressed the crowd of FFA members and delegates and referenced the fact that there are several educators in his family.

"When I say agricultural education is the noblest of professions and is important to me, I mean that," said Case. "If it's good enough for my family, it's good enough for you." Case wrapped up his onstage comments by assuring FFA members that they are in good hands. "I believe in you," he said, "and I shall never forget you."

The National FFA Organization, formerly known as Future Farmers of America, is a national youth organization of 532,309 student members — all preparing for leadership and careers in the science, business and technology of agriculture — as part of 7,487 local FFA

chapters in all 50 states, Puerto Rico and the Virgin Islands. The National FFA Organization changed to its present name in 1988 in recognition of the growth and diversity of agriculture and agricultural education.

The FFA mission is to make a positive difference in the lives of students by developing their potential for premier leadership, personal growth and career success through agricultural education. The National FFA Organization operates under a Federal Charter granted by the 81st United States Congress, and it is an integral part of public instruction in agriculture. The U.S. Department of Education provides leadership and helps set direction for FFA as a service to state and local agricultural education programs. Visit www.ffa.org for more information.

www.CountryTrailer.com

 #51808 MSRP \$28,860 New Elite 8' x 32'	 #41872 MSRP \$22,100 New Merritt 7' x 24'
 #01874 \$12,495 Pre-Owned 7' x 26' Barrett '03	 #71927 \$4,650 New 83' x 22' Car hauler 14,000#
 #01928 \$2,650 New 83' x 18' Car Hauler 10,400#	 #21846 \$17,495 Pre-Owned 7 1/2' x 28' Elite '08
 #31875 \$18,425 Pre-Owned 8' x 32' Elite '09	 #11925 \$9,495 Pre-Owned 7' x 24' Sooner '95

Country Trailer Sales (785) 626-9200

Parts, Sales, Service Merlin & Regan Green Since 1972

ELITE HYDRA-BED BARRETT Pride of the Prairie SHARP MFG MERRITT

BIG IRON

UNRESERVED AUCTION

ONLINE INTERNET ONLY

WEDNESDAY, NOVEMBER 10, 2010

First Lots Scheduled to Close at 10:00 AM Central Time

www.bigiron.com

NO BUYERS PREMIUM FEE & NO RESERVES!!

The following equipment is owned by various owners, Visit www.bigiron.com for owner names, items locations & phone numbers.

TRACTORS IH 3688 Tractor, 6942 Hrs 80 JD 850 Compact Tractor, 950 Hrs 75 JD 4630 Tractor, 7621 Hrs Case 2594 Tractor, 4559 Hrs Case 1490 Tractor, 2000 Hrs Case 830 Case-O-Matic Tractor 79 IH 1086 Tractor, 7130 Hrs 63 AC D19 Tractor, 6977.9 Hrs 53 AC I B Tractor 39 AC B Tractor 57 Oliver Super 88 Row Crop Tractor	95 International 3600 24 Pass School Bus SKIDSTEERS 06 NH L185 Skid Steer, 425 Hrs 06 NH L190 Skid Steer, 2,926 Hrs 05 JD 332 Skid Steer, 2,687 Hrs 97 NH LX665 Skid Steer, 4,489 Hrs TRAILERS 95 Transcraft Eagle Trailer Barnard & Leas CR45TYFS Lowbed Trailer 81 Peterson Single-Axle Enclosed Thumper Trailer 85 Wells Cargo Tandem Axle Enclosed Trailer	04 Cressoni 8R30" Chopper Corn Head HAYING EQUIPMENT Hesston 8550 S Windrower, 2498 Hrs Hesston 8200 Swather, 2897 Hrs Case IH 8590 Big Square Baler Vermeer R-23 Twin Rake 08 Schulte S150 Batwing Mower 99 NH 688 Round Baler 06 Hesston 956A Round Baler 01 NH 1475 Mower Conditioner
TRUCKS & VEHICLES 94 Peterbilt 379 Semi Truck 99 Freightliner FL70 Bucket Truck 98 International 9300 Semi Truck 99 Freightliner FLD 120 Garbage Truck 87 GMC 4x2 Medium-Duty Bucket Truck 96 Mack Cab & Chassis Truck 01 Ford F-250 4x4 Truck 96 GMC K1500 4x4 Truck 93 Ford L-8000 10 Wheel Dump Truck 83 Ford W8000 Dump Truck 75 Ford 900 Truck Crane	TILLAGE EQUIPMENT Landoll 850-19 20 Foot Mulch Finisher M & W 1465 Earthmaster 12' Disk Ripper PLANTING EQUIPMENT Case 1200 24R30" CCS Planter Great Plains Solid Stand 13 Grain Drill HARVEST EQUIPMENT 89 John Deere 9500 Combine, 2843 Sep Hrs 83 JD 6620 Combine, 3781 Hrs Showing	CONSTRUCTION EQUIPMENT 89 Case 1080B Excavator, 7124 Hrs 96 Traverse Lift 8040 Aerial Lift, 6434 Hrs LIVESTOCK EQUIPMENT Farm Shop 325 SPL Feeder/Mixer Wagon 99 Haybuster H1100 Big Bite Tub Grinder Harsh Feed Wagon SHOP EQUIPMENT 91 Ingersoll P175WW Air Compressor ATV 06 Club Cart Carryall 294 4X4 Utility Cart

The next Big Iron auction is on November 24!!

www.bigiron.com - a division of
Stock Auction Company
1-800-937-3558

STOCK AUCTION COMPANY
Quality Equipment Auctioneers
1-800-WE SELL 8 www.stockra.com

FIND WHAT YOU WANT AND NEED IN

Since 1954

GRASS & GRAIN

Published by AG PRESS

PRINT SUBSCRIPTION

3 Years	\$105 ⁰⁰
2 Years	\$77 ⁰⁰
1 Year	\$42 ⁰⁰

The above rates are for Kansas, western Missouri, and southern Nebraska (zip codes beginning with 640 through 645 and 660 through 689).

OUTSIDE AREA

3 Years	\$126 ⁰⁰
2 Years	\$91 ⁰⁰
1 Year	\$49 ⁰⁰

ONLINE SUBSCRIPTION

3 Years	\$84 ⁰⁰
2 Years	\$63 ⁰⁰
1 Year	\$35 ⁰⁰

ADD ONLINE TO YOUR PRINT SUBSCRIPTION FOR \$1 A MONTH

<input type="checkbox"/> 1 Year	\$12 ⁰⁰
<input type="checkbox"/> 2 Years	\$24 ⁰⁰
<input type="checkbox"/> 3 Years	\$36 ⁰⁰

Call Toll-Free: 877-537-3816 or 785-539-7558

VISA DISCOVER master card

Subscribe online: grassandgrain.com

MAIL TO (please print):

Name: _____

Address: _____

GRASS & GRAIN • BOX 1009 • MANHATTAN, KS 66505

GRASS & GRAIN

Our Daily Bread

***** By G&G Area Cooks *****

Carol Smith, Ozawkie, Wins This Week's Grass & Grain Contest

Winner Carol Smith, Ozawkie: "This recipe was just given to me by a friend. I really have enjoyed this squash recipe."

BUTTERNUT SQUASH BAKE

- 2 cups cooked, mashed butternut squash
- 1 cup sugar (I use 3/4 cup)
- 2 eggs, beaten
- 1/3 cup orange juice
- 1/3 cup nonfat dry milk
- 12 cup raisins
- 1/4 cup melted butter

Peel and slice butternut squash. I put squash in pressure pan. It can be microwaved or boiled in saucepan until tender. Combine all ingredients in blender, except the raisins. Blend until consistency is smooth. Pour into 1 1/2-quart greased casserole. Stir in raisins. Bake uncovered for 60 to 65 minutes at 350 degrees. Makes 6 servings.

- Gin Fox, Holton:
- HEARTY CHICKEN BAKE
- 3 cups hot mashed potatoes
 - 1 cup shredded cheddar cheese
 - 1 can French fried onions
 - 1 1/2 cups cubed cooked chicken

- 10-oz. pkg. frozen mixed vegetables, thawed & drained
- 1 can condensed cream of chicken soup
- 1/4 cup milk
- 1/2 teaspoon ground mustard
- 1/4 teaspoon garlic powder
- 1/4 teaspoon pepper

Preheat oven to 375 degrees. In a medium bowl, combine mashed potatoes, 1/2 cup cheese and 1/2 can onions. Mix thoroughly. Spoon potato mixture into greased 1 1/2-quart casserole. Using back of spoon, spread potatoes across bottom and up sides of dish to form a shell. In a large bowl, combine chicken, mixed vegetables, soup, milk and seasonings; pour into potato shell. Bake, uncovered, at 375 degrees for 30 minutes or until heated through. Top with remaining cheese and onions, bake, uncovered, 3 more minutes or until onions are golden brown. Let stand 5 minutes before serving. Makes 4 to 6 servings.

Gin Fox, Holton: "My grandson, who is 10, entered this recipe dish in the 4-H fair this year and earned a purple ribbon. It was very delicious as we all got to sample each of his trial and errors getting ready for the fair. We were very proud of him for taking the time to

enter this along with all of his other projects."

Tracer Fox, Holton:

FETTUCINI ALFREDO

- 12-oz. bag fettucini noodles
- 1/4 cup butter
- 1/2 cup milk
- 1 cup Parmesan cheese
- 1/2 tablespoon dry basil

Boil noodles about 10-12 minutes; drain. While noodles are cooking, in a small saucepan melt butter, then add milk and Parmesan cheese. Stir constantly until a thick sauce forms. Pour sauce over noodles, mix well. Season with salt and pepper to taste. Serve hot. Serves 6.

Sandy Hill, Eskridge: "This is tasty and doesn't take a lot of effort. If you are watching your weight, substitute reduced-fat or fat-free cream cheese and milk."

TOMATO CREAM SOUP

- 2 cups milk
- 14 1/2-ounce can diced tomatoes, undrained
- 8-ounce package cream cheese, softened
- 1/4 cup coarsely chopped fresh basil

- 1/2 teaspoon salt
- 1/8 teaspoon pepper

Place all ingredients in a blender, cover and process until smooth. Transfer mixture to a large saucepan and heat through. Yield: 4 servings.

Mary Rogers, Topeka:

SWEET POTATO BISCUITS

- 3/4 cup cooked mashed sweet potato
- 1/2 cup butter melted
- 3 tablespoons brown sugar
- 1/4 teaspoon cinnamon
- 2 cups flour
- 2 teaspoon baking powder
- 1 teaspoon salt
- 1/2 teaspoon baking soda
- 3/4 cup buttermilk

Bake the sweet potato in a hot oven for about 1 hour (creates a flavor you won't get in the microwave). Preheat oven to 400 degrees. Combine sweet potato butter, brown sugar and cinnamon. Beat at medium speed with a mixer until blended. Combine flour, baking powder, and salt; stir well. Stir soda into buttermilk. Combine sweet potato mixture, flour mixture, and buttermilk mixture in a large

bowl, stirring just until dry ingredients are moistened. Turn dough out onto a lightly floured surface and knead gently 4-6 times. Roll dough to 1/2 inch thickness, cut with a 1 1/2-inch biscuit cutter. Place on ungreased baking sheets and bake at 400 degrees for 12-15 minutes or until golden brown.

Millie Conger, Tecumseh:

FRUIT PIE

- 9-inch pie crust
- 1/2 cup butter, melted
- 1 cup sugar
- 2 eggs
- 1 tablespoon vinegar
- 1 teaspoon vanilla
- 1/2 cup chopped pecans
- 1/2 cup coconut
- 1/2 cup raisins
- 1/2 cup chopped dates

Preheat oven to 350 degrees. In a bowl, whisk melted butter, sugar, eggs, vinegar and vanilla until smooth. Stir in pecans, coconut, raisins and dates. Spoon mixture into pie crust. Bake for 35 to 40 minutes or until center of pie is set. Let cool completely before serving.

OLSON'S

1214 B. Moro | Aggieville
Manhattan, KS
785.539.8571
Mon-Fri 9-6 | Sat 9-4

Family owned and operated since 1913

Reasonable prices

Three day turnaround

ADD VALUE TO YOUR FOOTWEAR INVESTMENT

BOOT REPAIR

"R.J." Black
STANDING
MAMMOTH

WORMAN'S
HARNESS SHOP

Chaps & Chinks
Mule Saddles
Custom Harness
Repair Harness & Saddles

M.E. (Jack) Worman
525 N. Kipp Rd.
Salina, Kansas 67401
785-823-8402

FOR SALE

1992 HAYBUSTER HD12 TUBGRINDER

500 HP Cat engine, semi trailer mounted

For more information call Steve 785-294-0515

Gutenkauf Tree Service
102 North St. Seneca, KS 66538
(785) 336-3538

"PROFIT BLOCKS"

MORE PROFITS FROM START... TO FINISH!

FOR EVERY STAGE OF GROWTH

Craig Wischropp • 785-486-2626

No Molasses No Urea

Walk-In Business Welcome! Horton, KS

www.sweetpro.com 888-437-9294

SweetPro PREMIUM FELD SUPPLEMENTS

Featuring PRO GLO TEIN

HOMELAND INSULATION

Spray Foam Specialist

Travis Turner
homelandinsulation@yahoo.com

Lower Your Utility Bill "Guaranteed"

Metal Buildings
Commercial Buildings
New & Existing Residential

913-449-9579

Energy INSULATION

Tree & Brush Free Ranch

WOLF Garten

MULTI-LEVER LOPPER

Ideal for cutting cedar trees in pastures

The Old Way The New Way

• Coated blade • Lightweight aluminum handles — 28 1/4 inches long for long reach. Weight 4.1 lbs. • Slicing cutting action • Special leverage for effortless cutting • Cuts branches and trees up to 2 inches thick.

DICK'S RANCH SUPPLY

5562 Kiowa County Ave. 57, Belvidere, KS 67028

1-800-201-2351

Corral Plans - \$5 + \$2.98 P&H

Phone Orders Welcome

ALL MAJOR CREDIT CARDS WELCOMED!

VISA master card DISCOVER

Prices and Specifications subject to change without notice.

SWIHART Sales Company - Mist Sprayers

INNOVATIONS American Made

We offer a complete line of low volume mist blowers. Excellent for spraying: cattle, vegetables, vineyards, orchards, nurseries, Christmas trees, mosquitoes, chicken houses, etc.

References available in your area

Motor Models available

Large Selection High Performance

Swihart Sales Company

Call for free brochure: 785-754-3513 or 800-864-4595

www.swihart-sales.com 7240 County Road AA, Quinter, KS 67752

RJA

DOZER SERVICE, LLC

Excavating Contractors

620-789-3478

Jordan Amy

• Industrial • Agricultural • Commercial

• Excavation

• Demolition

• Building Pads

• Site Prep

• Conservation/Terracing

• Laser Grading

• GPS

NOW OPEN FOR BUSINESS

Green Valley Veterinary Services, LLC

Mobile Large Animal Medicine & Surgery

• Examinations

• Vaccinations, Deworming

• Herd Health

• Pregnancy Palpation

• Semen Evaluation

• Castration

• Dehorning

• Routine & Speciality Surgeries

• Country Calls

• Dentistry (equine powerfloat)

• Emergency Services (answered 24 hours)

We carry a variety of Bovine & Equine products ... If we do not normally carry the product ... We can order it for you!

CALL FOR ALL OF YOUR LARGE ANIMAL HEALTH NEEDS!

* Cattle

* Horses

* Sheep

* Goats

Robert L. Rust, DVM

13944 Melissa Vue

Wamego, KS 66547

785-477-6149

OVERHEAD BULK BINS

14 - 54 Ton Capacity

550 to 2100 Bushels

- Built for heavier weight material -

FEATURES:

High quality M.I.G. welding process used for complete penetration in all seams.

48-degree slope on hopper for good clean-out and 42-degree slope on top for complete fill, even in the corners.

External ribbing eliminates side bowing.

Sturdy ladder for ease of access (interior ladder standard).

Prime coated inside and outside, finish coat in any basic color.

OPTIONS:

Roof ventilation as required.

Anti-corrosive enamel available.

Blower pipe for filling.

Double compartment for storage of two different commodities.

CUSTOM:

Bins available in any design and size ... built for your specific needs.

Machine Service INC.

Fabricated Steel Products

3430 EE Road
Gridley, Kansas 66852

(620) 427-4200

www.machineserviceinc.com

STOP

Water from coming in your Basement or Grain Elevators

I will pump gel (Oilfield gel) under your floors and/or behind Your wall to fill any space or crevice where water can creep into your basement or grain elevators. All work guaranteed.

DON'T WAIT.

CALL BILL NICHOLS WATERPROOFING NOW

1-800-215-0537

8 a.m.-6 p.m. Monday thru Saturday

*Free Estimates-No Excavating * Don't wait until it floods again *

WESTENDORF — Loader Specialist

TA-25 30-70 hp

TA-26 30-120 hp

895 CASE IH

6200 JOHN DEERE

MOUNTING & TRUCKING AVAILABLE

NORTONVILLE PARTS & SERVICE

Nortonville, Ks. — (913) 886-2960

QUALITY HOMES, INC.

SAVE UP TO \$8,000 on a new custom built home with delivery by February 1, 2011 Call for details!

Custom Designed • Custom Built • Quality, Off-Site Construction

Quality is more than a name...It's built into each home we build!

800-848-1410 • qualityhomesinc.com

Summerfield, KS

Open weekdays 9-5 and Sat. 9-3.

Building Custom Homes for families in Kansas and Nebraska for over 30 years!

Try Pumpkin Flan For A Healthier Holiday Dessert

(NAPSA) — A healthier take on holiday dishes can benefit the whole family, especially considering that type 2 diabetes affects at least 24 million American adults and children. People with diabetes are at greater risk of cardiovascular disease, the number one cause of death in the U.S.

Cheryl Forberg, R.D., consulting dietitian to NBC's "The Biggest Loser" and a James Beard award-winning recipe developer, has created diabetes-friendly, heart-healthy recipes for a holiday meal makeover. These recipes use canola oil, which has the least saturated fat and most omega-3 fat of all cooking oils.

Forberg's dessert recipe does away with pie crust and concentrates on yummy pumpkin flavor, allowing people to have their cake (flan) and eat it, too:

Pumpkin Flan

Canola oil cooking spray
3 eggs, omega-3 enriched, if available
1 1/4 cups pumpkin purée
7 tablespoons (1/4 cup plus 3 tablespoons) maple syrup
5 1/2 teaspoons canola oil
1 1/2 teaspoons pure vanilla extract

3/4 teaspoon ground cinnamon
3/8 teaspoon ground ginger
1/4 teaspoon ground cloves
1/4 teaspoon salt
1 1/2 cups low-fat milk, heated until very hot
Boiling water, about 1 quart
Ground nutmeg (garnish)



A slice of traditional pumpkin pie weighs in at about 300 calories and 5g saturated fat compared to only 190 calories and 1.5g saturated fat in this pumpkin flan made with canola oil.

Preheat oven to 350 degrees F. Adjust oven rack to center position. Coat eight 6-ounce custard cups or ramekins with canola oil cooking spray and set them in 13-by-9-inch baking pan.

In large bowl, beat eggs slightly; add pumpkin purée, maple syrup, canola oil, vanilla, spices and salt. Beat with mixer until blended thoroughly. Mix in hot milk until blended.

There will be about 4 cups of liquid. Pour 1/2 cup flan mixture into each prepared ramekin.

Carefully pour boiling water into baking pan around ramekins. Water should come up to the level of custard inside ramekins.

Bake 40 to 45 minutes or until set around the edges but still a little loose in center. When center of flan is just set, it will jiggle a little when shaken. Remove from oven and immediately remove ramekins from water bath; cool on wire rack until room temperature. Cover with plastic wrap and refrigerate.

Serve cold and garnish with ground nutmeg. This dessert can be made up to three days in advance. Keep refrigerated until serving. Yield: 8 servings.

Nutrient analysis per serving: 190 calories, 7 g total fat, 1.5 g saturated fat, 110 mg cholesterol, 220 mg sodium, 24 g total carbohydrate, 2 g fiber, 6 g protein.

For more information, visit www.canolainfo.org.



(NAPSA) — As seasons change, people tend to spend more time at home with friends and family — and look for entertainment options that will stretch their dollars through the weekends.

Here are a few suggestions for families and couples on a budget:

- Turn Friday evening dinner into smorgasbord night. It's a great way to use up all the leftovers in the fridge while not having to plan dinner. Just heat in the microwave or the toaster oven, and a variety-filled dinner is ready in minutes. Then dust off one of the classic board games in the closet, such as "Scrabble," and get the kids' competitive juices flowing by letting winners choose ice cream or cake for dessert.

- There are no lines and no late fees for films on the digital cable Movies On Demand line-up. Instead, enjoy a wide selection of movies anytime without ever leaving the couch.

Easy And Affordable Fun At Home

With just a click of the remote, turn any night into date night with Queen Latifah and Common's romantic comedy about love and other games, "Just Wright." Girls night in? Grab some gal pals, put on some waterproof mascara and watch Amanda Seyfried's "Letters to Juliet." Instantly embrace your inner rock star with the misadventures of Russell Brand and Jonah Hill in "Get Him To The Greek." Or supersize your family night with a comedy about an oversized pooch, "Marmaduke." Pajamas and popcorn not included.

Renting the newest releases has never been easier. Many films are available the same day as their DVD release, so there's no waiting in traffic, at store checkout or for the mail.

Movies on demand are never sold out or out of stock, and you always get the best seat in the house. With several choices in high-def, you can enjoy high-definition entertainment at your fingertips.

For more information, visit www.cablevideostore.com

SCHULER FEED WAGONS

Vertical single & twin screw TMR-BF Series

- HF255 Hay Feeder -
Steiner Implement
SABETHA, KANSAS
785-284-2181

MANHATTAN SHOE REPAIR

Repairing

- Boots
- Shoes
- Purses
- Luggage
- Back Packs
- Ball Gloves

M-F • 8-5:30 • Sat. • 8-12:00
216 South Fourth
Manhattan, KS
785-776-1193

PORTABLE CATTLE AND HORSE SHELTERS



Will
Custom
Build
To
Your
Needs

- Built on 4 x 4 x 3/16-inch square skids with chains for easy moving
- Frames are built on 3-inch square tubing, 3/16-inch wall thickness
- Purlins are made of 2-inch square tubing
- No. 1 Dura-shield Metal - choice of color and trim

H & L QUALITY BUILDINGS, INC.

2404 26th Ave. • Central City, NE 68826
Phone: 1-866-946-5212 (toll free) • Cell 402-694-8614
hlqualitybuildings.com email: hlqly@yahoo.com



Ranch Ready
Ranch Proven

It is more than a feed truck...Move hay—feeders—portable panels—4-wheelers • Hydraulic remotes run hydraulic cylinders, motors • 11 GPM, 2500 PSI, 3000# Lift Capacity

Miller Ranch Equipment

33778 Hwy. K-99, Alma, KS • 785-765-3588
www.MillerRanchEquipment.com

CHELATION HEART DISEASE, ANGINA?

Get an unbiased SECOND OPINION by reading "Bypassing Bypass Surgery" by Elmer Cranton, M.D., so YOU can decide for yourself. CHELATION may be right for you.

OTHER IV THERAPIES

"It made tears run down my face! After Mom's first IV therapy, she walked one hour and forty-five minutes instead of shopping in her wheelchair. Thank you for giving me back my mom! -K.T., Salt Lake City

"The surgeon said he would have to amputate my toe. Now after 3 days I have feeling and circulation in that toe and it is pink. -G.C., Park City

"Six days ago I had chest pains after one and one half minutes on the treadmill. Today, I went 45 minutes with no chest pain. -J.C., Wichita.

WATSON MEDICAL GROUP

Park City, Kansas • 316-744-3400
Hay, Kansas • 785-628-3215

Back Pain & the DRX9000™



Common Causes of Back Pain

- The discs in your spine act as shock absorbers. Herniation or "bulging" of the discs may occur due to wear and tear. This is one of the most common causes of lower back pain.
- Disc degeneration can occur when the spongy disc dries out. Over time or with injury, discs may dry out, tear and put pressure on the nerves. The result is muscle tension and back pain.

"The DRX9000™ is designed to relieve pain and promote healing."

Non-Invasive. Non-Surgical.

With the DRX9000™, You Can Take Hold of Your Life Again!

- Reduce your back pain.
- Reduce your symptoms.
- Reduce your disability.
- Improve your quality of life

About the DRX9000™

- The DRX9000™ is effective in treating low back pain associated with herniated discs, bulging discs and degenerative disc disease, allowing patients to return to an active lifestyle.

Treatments on the DRX9000™

- Consists of 20 sessions over a period of six weeks.
- Each session lasts 30 minutes.
- Following each therapy session, a cold pack and/or electrical stimulation is applied to help restore muscle tone.

Now Accepting Blue Cross -Blue Shield

Dr. Scott D. Iversen
630 Poyntz • Manhattan, KS
Call Today! 785-776-7568

TIFFANY CATTLE CO., INC

A Complete Cattle Feeding and Marketing Service

Tiffany Cattle Co.
Family Owned
And Operated

With a 15,000 head capacity, Tiffany Cattle Company is large enough to have economics of scale but small enough to provide personal attention. Pen sizes range from 50 to 200 head. A computerized summary of feed, cattle processing, veterinary services and other costs are easily accessible on each pen of cattle.

PRODUCTION SERVICES

Objective is simply: Least Cost Per Pound of Gain!

Ration formulation and cost analysis, health program designed and maintained by veterinarian, special pens and attention to sick animals, feed financing, and cattle purchasing available.

MARKETING SERVICES

Marketing finished cattle is top priority at Tiffany Cattle Company. You have the option of selling on the cash market, forward contracting or grid pricing through US Premium Beef.

- Risk management handled by Tiffany Cattle Company
- Locked commodity prices • Complete profit/loss statement for each pen
- All marketing decisions discussed with and approved by cattle owner
- Reward for your efforts in producing a quality product by selling your cattle on an industry competitive grid

1333 S. 2500 Road, Herington, KS 67449
Shawn Tiffany, Owner/Manager: 785-229-2902
Shane Tiffany, Owner/Manager: 785-466-6529
Doug Laue, Co-Owner
Office: 785-258-3721 • tiffanycaco@fhrrd.net

COMING SOON ... Annual Grass & Grain Holiday Recipe Contest

Nov. 23 through Dec. 21

In observance of the holiday season, Grass & Grain will award the weekly winners \$35 in addition to the prize gift.

Recipes received NOVEMBER 11 through DECEMBER 15 will be entered in the holiday contest. Enter as often as you like during this period.

OCTOBER & NOVEMBER 2-9-16 "Our Daily Bread" Recipe Contest Prize

Bacon Genie™

- Hang up to 12 strips of bacon on the stand.
- For use in the microwave.
- Convenient spout to easily pour out the grease.
- Includes tongs for serving bacon.
- Made of plastic; top-rack dishwasher safe.



The winner each week is selected from the recipes printed.

Send us your favorite recipe. It may be a main dish, leftover, salad, side dish, dessert, or what-have-you.
1. Check your recipe carefully to make certain all ingredients are accurate and instructions are clear.

2. Be sure your name, address and phone number are on the entry. Please include a street address with your recipe entries. A post office box number is not sufficient for prize delivery. Allow 3-4 weeks for delivery.
3. Send it to: Woman's Page Editor, Grass & Grain, Box 1009, Manhattan, KS 66505.
OR e-mail at: agpress2@agpress.com

Mark your calendars for Wichita Farm and Ranch Show Nov. 9-10-11

Wichita Farm and Ranch Show organizers hope you reserve November 9th, 10th, and 11th to attend the 16th annual Farm Show. The show is again located at the Sam Fulco Pavilion at the Kansas Pavilions. Doors open at 9:00 a.m. daily with Tuesday night's close at 5:00 p.m., Wednesday night's close at 8:00 p.m. and Thursday's wrap-up at 4:00 p.m.

Admission and parking at the Wichita Farm and Ranch Show are free! "We try to add some new events every year, to keep the show fresh and give the producers a reason to keep coming back each year," said Steve Guenther, show manager. Featured at this year's farm show are a full lineup of trailer manufacturers and once again a full range of livestock handling equipment. See the newest in grain and livestock trailers plus a full line of scales and accessories to complement the trailers. Check out several new additions to the squeeze chute demonstrations.

Guenther encourages everybody to call KFRM Radio 550 AM at 888-550-5376 to reserve his or her free sandwich supper ticket and a chair at the 4th annual "Market Shoot-Out IV" held opening day, Tuesday, Nov 9th. Who would have thought this year's market would be even more volatile than last year's? Speaking of volatility, the market analysts for KFRM will return

for the shoot-out and provide insight to these illogical markets. The "Wall Street" effect, fund money, and world production will all certainly be discussed in an entertaining and educational format that will place Pete Loewen, Tom Leffler, Chris Haverkamp and Mark Gold in the KFRM corral for the "Market Shoot-Out IV." Last year the pistols came out blazing, leaving some with a ringing in their ears. If the markets have your ears ringing don't miss the marketing event of the year. For tickets and information call KFRM at 888-550-5376.

See local horsemanship clinician Scott Daily twice each day as he works the horse training demos. The free clinic is held each day; Tuesday 10:00 a.m. & 4:00 p.m. Wednesday 11:30 a.m. & 6:30 p.m., Thursday 10:30 a.m. and 2:30 p.m. Attend Scott Daily Horsemanship Clinics and register to win 10 twelve foot corral panels and a 6x9 walk-through gate courtesy of Behlen Horse Country.

Are you looking to upgrade your current livestock handling facilities? Are your facilities in good shape; are they safe for your operators? These two questions can be answered by attending the daily squeeze chute and handling equipment demos at the show. KFTI FM 92.3 "Classic Country," Behlen Country and Livestock Concepts will sponsor the cattle squeeze

chute demos each day; Tuesday 12:00 & 3:00 p.m., Wednesday 1:30 p.m. & 5:00 p.m., and Thursday at 12:30. See seven different chutes in operation, processing cattle at each demo.

Becky Rus, Livestock Concepts, will supply the medications plus demonstrate proper BQA and handling of her products. Throughout the three-day event Becky will be available to answer any of your questions. Behlen Country is furnishing the crowding tub, chute panels and alleyway to correctly handle the cattle during the three days of cattle demos. Central City Scale will have their scale on hand recording weights. Visit the daily squeeze chute demos and have the chance to win a free sorting stick. Tim Fuller, regional rodeo announcer, will emcee the squeeze chute demonstrations and offer his comments on the livestock industry.

Stop at the Information Desk and register for three \$250.00 daily cash drawings plus a Thursday afternoon drawing for a Behlen Horse Country 40-foot Round Corral and a 6x9 walk-through gate courtesy of the Wichita Farm & Ranch Show (Must be 18 years of age or older).

Show hours: Tuesday, November 9th, 9 a.m.-5 p.m.; Wednesday, November 10th 9 a.m.-8 p.m.; and Thursday, November 11th, 9 a.m.-4 p.m. www.tradexpos.com or steve@tradexpos.com

TWO ATTENDEE GRAND PRIZES

\$250.00

To be given away each day of the show.
All entries will be removed after each drawing.
Drawing at the end of show each day!
Must be 18 years of age or older to enter.

PLUS

Behlen Horse Country 40 foot round horse corral & ride thru gate (10 twelve ft panels & 6'x9' gate)

(\$1350.00 MSRP)

Must be 18 years of age or older to enter.

To be given away Thursday, 11/11/10 after the final 2:30 pm horse clinic.

Phillips

SEED

Your Complete Seed & Service Company

Corn • Soybeans • Sorghum • Wheat • Forage

Our Focus is on Finding the Right Locally Adapted Hybrids and Varieties that will Excel in Your Environment.

Extensive Dealer Network - Call or Check Online For Your Nearest Dealer:

Phillips Seed Farms, Inc.

Hope, KS • (800) 643-4340

Assaria, KS • (800) 255-1021

Tescott, KS • (888) 436-4734

www.phillipsseed.com

Stop by our Booth at the Wichita Farm Show!

"Plains Tested, Plains Tough"

Top Yielding Hybrids & Varieties

Phillips Corn

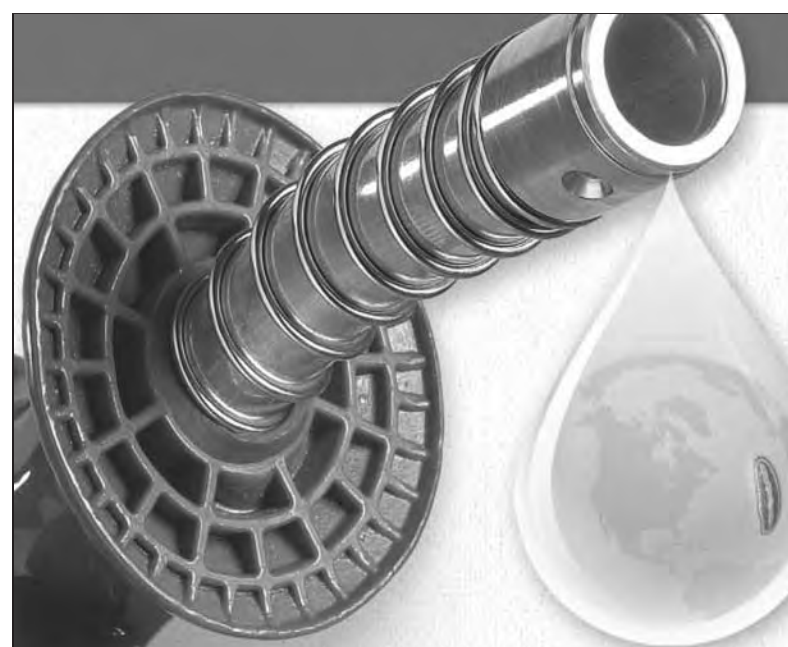
Full lineup in a wide range of maturities and traits such as: Agrisure 3000GT, YieldGard® VT Triple, RR Herculex I™, Agrisure® GT/CB/LL, Agrisure® GT, and Roundup Ready® Corn 2.

Phillips Soybeans

Check out our lineup of Genuity® Roundup Ready 2 Yield, Roundup Ready®, Liberty Link®, STS, and Conventional Varieties.

Phillips Grain Sorghum

Tough, high yielding hybrids in a wide range of maturities and agronomic characteristics.



YOUR FARM. YOUR FUEL. OUR FUTURE.

See Us In Booth N3-4 at the WICHITA FARM SHOW

If every farmer filled up with B2, a 2 percent blend of soy biodiesel, we could utilize over 50 million bushels of U.S. soybeans a year. We carry B2 in your area. So ask us for it, and then use it in all your diesel engines. They're your soybeans. Put them to work for you.

For more information contact the Kansas Soybean Commission
Toll Free: 877-KS-SOYBEAN (577-6923)

"My Farm, My Fuel" is a trademark of the United Soybean Board



TAKE A POWER TRIP.



CASE IH MAGNUM TRACTORS.

The big and powerful Case IH Magnum tractors also offer the industry's largest and most comfortable cab, giving you a luxurious seat to steer your operation in the right financial direction. The ergonomic cab layout offers a convenient reach to all of your controls, and the spacious interior makes for a comfortable way to improve your productivity. Select from a wide range of tire, axle, ballast and hydraulic options customized to make your Magnum tractor just right for you. With access to flexible financing, reliable parts and expert service, you owe it to your bottom line to talk to your Case IH dealer about the latest generation of Magnum tractors.

Bruna Implement
Washington, KS
785-325-2232

McConnell Machinery
Lawrence, KS
785-843-2676

KanEquip
Wamego, KS
785-456-2041

Rossville Truck & Tractor
Rossville, KS
785-584-6195

Straub International
7 Kansas Locations
www.straubint.com

"Bova-Hold 500 Manual Squeeze Chute"

Visit Our BOOTH N6-3 at the WICHITA FARM SHOW!



Linn Post & Pipe's new Bova-Hold 500 squeeze chute utilizes a reverse lateral squeeze motion to draw the animal back from the headgate increasing the exposed area of the animals neck. This unique design not only gives greater access to the neck but eliminates wasted time opening and shutting neck access gates.



FEATURES:

- Reverse Lateral Squeeze
- Removable foot doors
- Work from either side
- Reversible branding doors
- Rubber gripping strips

www.linnpost.com

LINN

POST & PIPE, INC.

Quality has no substitute

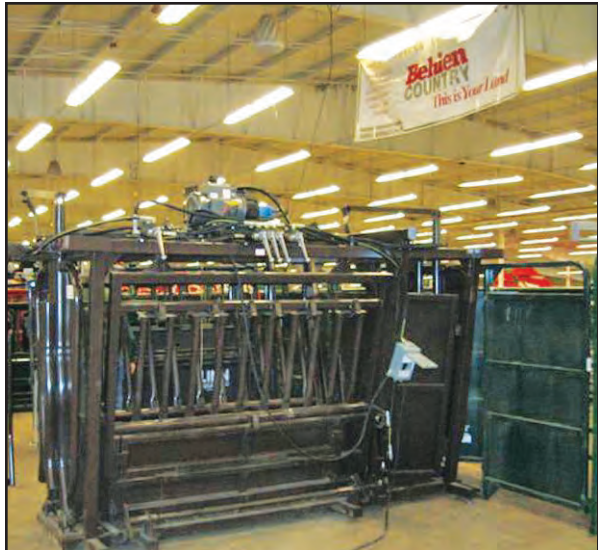
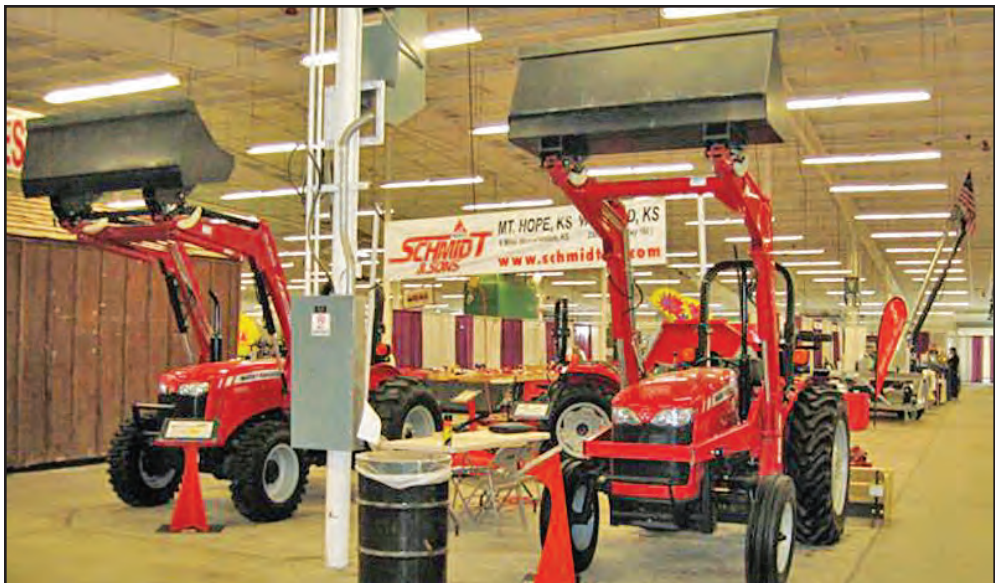
Linn, KS
800-526-0993

Creighton, NE
800-638-4036

Stillwater, OK
877-707-9997



The latest in new products and services will be featured among the many exhibitors, some who have been coming to the Wichita Farm and Ranch Show for years, and others who will be making an appearance for the very first time.



• 17 YEARS BUILDING EXPERIENCE •

Toll-Free: 877-838-4177

DROP 'N LOCKS

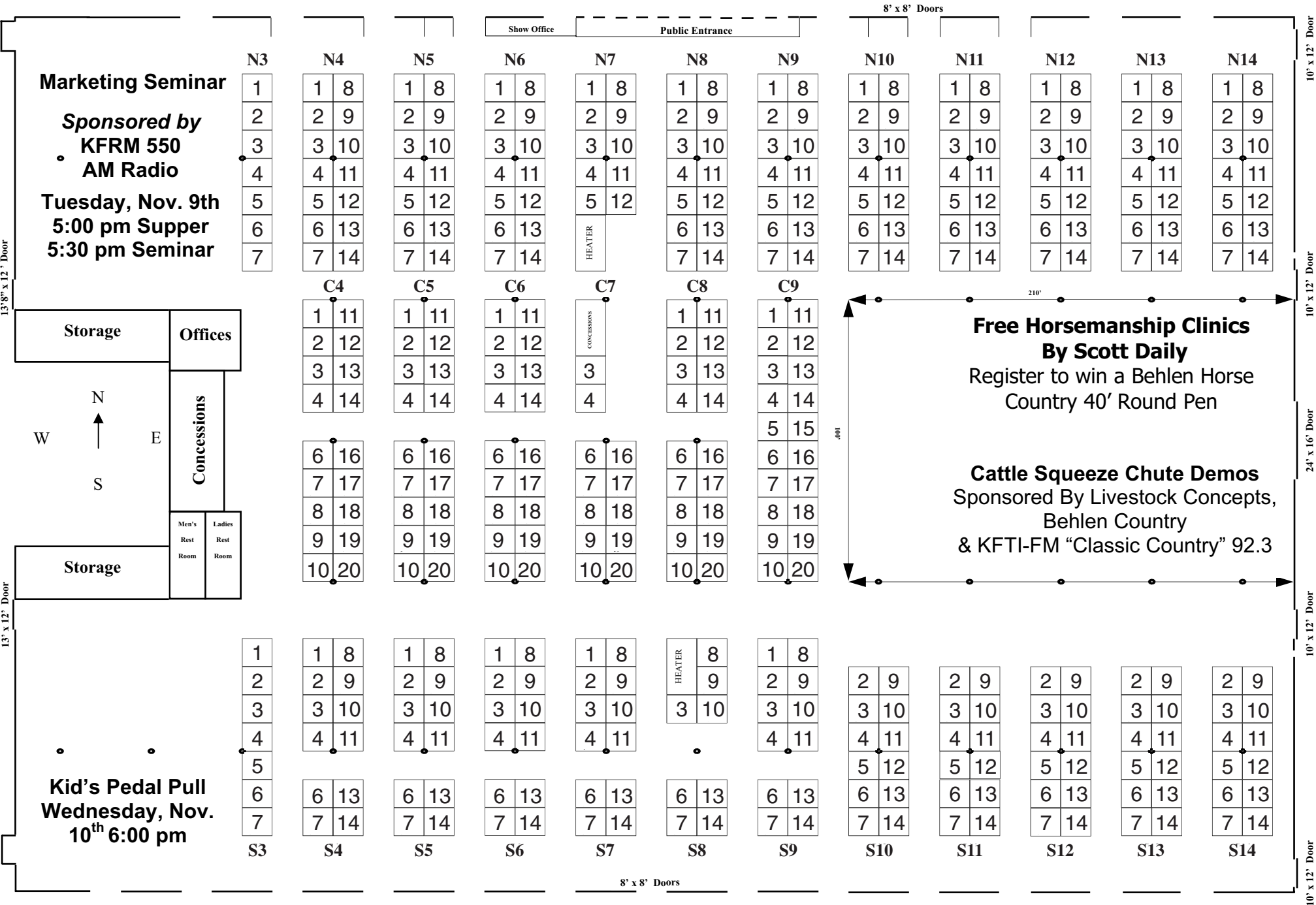
- Centralia, KS**
785-857-3581

A collage of five different types of metal buildings. From left to right: a small white shed with a gabled roof; a large, open-sided industrial building with a corrugated metal roof and walls, showing the interior with various equipment; a two-story yellow and blue building with a blue roof and large white doors; a small white shed with a gabled roof; and a large red barn with a green roof and a white door.



\$50,900

Wichita Farm & Ranch Show — Sam Fulco Pavilion



NOVEMBER 09★10★11

KANSAS PAVILIONS

SAM FULCO PAVILION ★ VALLEY CENTER, KANSAS

FREE ADMISSION ★ FREE PARKING

SEE THE LATEST IN FARM & RANCH EQUIPMENT AND TECHNOLOGY

FREE HORSE TRAINING CLINICS BY SCOTT DAILY

Tuesday 10:00 AM & 4:00 PM
Wednesday 11:30 AM & 6:30 PM
Thursday 10:30 AM & 2:30 PM



INDOOR SQUEEZE CHUTE DEMONSTRATIONS

Tuesday 12:00 PM & 3:00 PM
Wednesday 1:30 PM & 5:00 PM
Thursday 12:30 PM



WICHITA FARM & RANCH SHOW 2010

SHOW HOURS

TUES. 9 AM - 5 PM
WED. 9 AM - 8 PM
THURS. 9 AM - 4 PM

KFRM 550 AM RADIO

"The Voice Of The Plains"
PRESENTS
"MARKET SHOOT-OUT IV"
TUESDAY, NOVEMBER 9TH
FOR FREE TICKETS CALL
888-550-5376 (KFRM)



GRAND PRIZE DRAWINGS

\$250 Cash Prize - Given Daily
One 40' Behlen Horse Country Round Pen
Winner of pen drawn on Nov. 11, 2010
Must be at least 18 to register for prizes

For farm show information
call TRADEXPOS 800-949-3976
or visit our website at www.tradexpos.com

2010 Wichita Farm & Ranch Show Schedule

TUESDAY, November 9th

9:00 a.m. SHOW OPENS
10:00 a.m. SCOTT DAILY HORSEMANSHIP

CLINIC-Sponsored by Behlen Horse Country.

12:00 p.m. LIVESTOCK SQUEEZE CHUTE DEMO — Sponsored by Behlen Country, Livestock Concepts, KFTI FM "Classic Country" 92.3.

1:00 p.m. LADIES "HANDS ON" DEMO — "CREATIVE CARDS" by Betty Dillon.

3:00 p.m. LADIES "HANDS ON" DEMO — "FABRICS YO YO'S" by Betty Dillon.

3:00 p.m. LIVESTOCK SQUEEZE CHUTE DEMO- Sponsored by Behlen Country, Livestock Concepts, KFTI FM "Classic Country" 92.3.

4:00 p.m. SCOTT DAILY HORSEMANSHIP CLINIC — Sponsored by Behlen Horse Country.

5:00-7:00 p.m. SANDWICH SUPPER & SEMINAR — Sponsored by KFRM 550 AM Radio. Call 888-550-5376 to reserve your sandwich supper/seminar ticket.

5:00-7:00 p.m. KFRM "MARKET SHOOT-OUT-III" Do the markets

have your head spinning? Unsure of how to maintain profitability for your farm or ranch in these days? It all starts with Kyle's famous ham sandwich at 4:30 p.m. and Round Four starts at 5:00 p.m. 4:30 p.m. Daily \$250.00 Cash Drawing 5:00 p.m. CLOSE OF SHOW

WEDNESDAY, November 10th

9:00 a.m. SHOW OPENS
11:00 a.m. LADIES "HANDS ON" DEMO — "CREATIVE CARDS" by Betty Dillon.

11:30 a.m. SCOTT DAILY HORSEMANSHIP CLINIC — Sponsored by Behlen Horse Country.

1:30 p.m. LIVESTOCK SQUEEZE CHUTE DEMO — Sponsored by Behlen Country, Livestock Concepts, KFTI FM "Classic Country" 92.3.

1:00 p.m. LADIES "HANDS ON" DEMO — "FABRICS YO YO'S" by Betty Dillon.

3:00 p.m. LADIES "HANDS ON" DEMO — "CREATIVE CARDS" by Betty Dillon.

5:00 p.m. LIVESTOCK SQUEEZE CHUTE DEMO — Sponsored by Behlen Country, Live-

stock Concepts, KFTI FM "Classic Country" 92.3.

5:15 p.m. REGISTRATION "KIDS" PEDAL PULL — 9 classes (ages 4-12) Boys & Girls.

6:00 p.m. "KIDS" PEDAL TRACTOR PULL — 9 classes ages (4-12) Boys & Girls.

6:30 p.m. SCOTT DAILY HORSEMANSHIP CLINIC — Sponsored by Behlen Horse Country.

7:00 p.m. LADIES "HANDS ON" DEMO — "FABRICS YO YO'S" by Betty Dillon.

7:30 p.m. Daily \$250.00 Cash Drawing 8:00 p.m. CLOSE OF SHOW

THURSDAY, November 11th

9:00 a.m. SHOW OPENS
10:30 a.m. SCOTT DAILY HORSEMANSHIP CLINIC — Sponsored by Behlen Horse Country.

11:00 a.m. LADIES DEMO — "CREATIVE CARDS" by Betty Dillon

12:30 p.m. LIVESTOCK SQUEEZE CHUTE DEMO — Sponsored by

KFTI AM 1070 "The Ranch", Behlen Country, Livestock Concepts, KFTI FM "Classic Country" 92.3.

1:00 p.m. LADIES DEMO — "FABRICS YO YO'S" by Betty Dillon

2:30 p.m. SCOTT DAILY HORSEMANSHIP CLINIC — Sponsored by Behlen Horse Country.

3:30 p.m. Daily \$250.00 Cash Drawing

3:30 p.m. Behlen Horse Country 40' Round Pen and Walk thru Gate Drawing

4:00 p.m. CLOSE OF SHOW

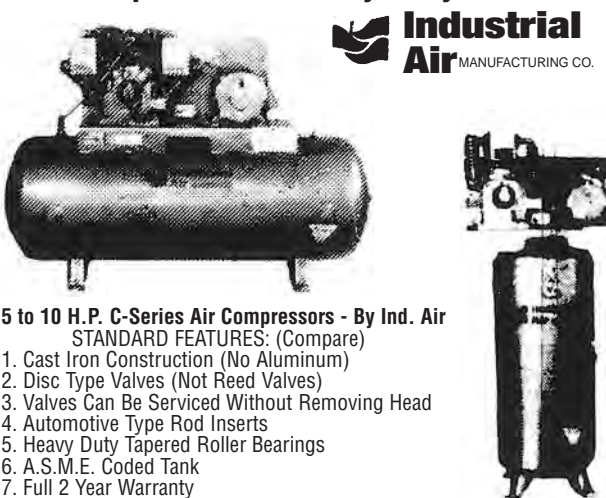
LADIES — SPECIAL DEMOS SCHEDULE "MAKE N' TAKE" DEMOS BY BETTY DILLON

Betty demos how to turn items into treasures. Items to be created are "Fabrics Yo Yo's and Creative Cards". Participants will create their own design to take home with them.

Tuesday 1:00 am & 3:00 pm. Wednesday 11:00 am, 1:00 pm, 3:00 pm, & 7:00 pm.

Thursday 11:00 a.m. and 1:00 p.m.

Air Compressors: Heavy Duty Cast Iron



5 to 10 H.P. C-Series Air Compressors - By Ind. Air
STANDARD FEATURES: (Compare)
1. Cast Iron Construction (No Aluminum)
2. Disc Type Valves (Not Reed Valves)
3. Valves Can Be Serviced Without Removing Head
4. Automotive Type Rod Inserts
5. Heavy Duty Tapered Roller Bearings
6. A.S.M.E. Coded Tank
7. Full 2 Year Warranty

Compare prices and quality to competitive brands: Lease purchases available on all sizes. All compressors priced delivered. Parts, Warranty, On Most Major Brands.

FOR MORE INFO.: Phone (785) 454-3409

North Central Air Downs, Kansas



Scott Daily HorsemanSHIP Clinic

The whole purpose in horse training is establishing a working relationship between the horse and the rider. In order to accomplish this, the horse must become acquainted with the attributes and habits of being handled by a human being. With adjustments, nurturing and well-tempered training, a relationship develops between the horse and the trainer. This relationship is transferable to horse and rider. Horse training is that simple and is the most important thing you will ever do to come to truly enjoy your horse(s) and trust the horse to be your companion.

Tuesday, November 9th, 10:30 a.m. & 4:00 p.m.

Wednesday, November 10th, 11:30 & 6:30 p.m.

Thursday, November 11th, 10:30 a.m. & 2:30 p.m.

IT'S ABOUT THAT TIME!

CONTINUOUS FENCING

"SO MUCH FENCE IN SO LITTLE TIME!"

The EASIEST, the FASTEST, & the BEST LOOKING fence money can buy!

FOREVER FEED BUNKS

Big Pipe Feed Bunks; they last forever and are practically indestructible. Super Bunks hold tremendous volume for you guys that feed silage and ground hay.

Never replace your bunks again!

GoBob NOW OFFERS HAY TRAILERS FOR EVERY NEED AND EVERY BUDGET!

HURRY! TIME IS RUNNING OUT! Don't miss the opportunity to own a 2 Ex Bale Mover or a Hayroll at DEALER COST!

With OVER 7000 Hay Conservator Feeders in use, We are proud to offer a 100% MONEY BACK GUARANTEE!

Feeding time is about to hit. Now is the time to equip yourself with the best bale feeders money can buy.

"This feeder makes you money because you feed 30% less hay, GUARANTEED. First feeder ever that has a structural and rust out warranty as well."

Stop Wasting Time & Money!

GoBob Pipe & Stock Sales
(877) 851-2365
gobobpipe.com

Stop by Our Booth N5-9 at the Wichita Farm Show

Kansas' Long-Term Care, Life and Health Insurance Specialists

CALL US TOLL-FREE:
800-373-9559
JIM PHILLIPS INSURANCE

Renn Farm Boy Roller Mill

- 10 HP Single Phase
- 12x16" Hardened Steel Rolls
- 900 bushels Corn - 500 bushels Milo per hour
- Rolls Directly Out of Bin
- Portable or Stationary Models

SEE US AT THE WICHITA FARM SHOW
BOOTH #C5-13

NORTH CENTRAL STEEL

Minneapolis, KS 67407
800-382-0106

The National Leader in Agricultural Scale Service and Technical Support

Go Green SCALE SYSTEMS

Portable Chute Scales

3' x 8' single animal size.

Grain Cart Kits

Complete system update for practically every model.

Livestock Scales

8' x 10', 8' x 16' and 8' x 20'.

Cake Feeder Scales for Under \$1,000

The new multi-purpose scale offers up to 5,000 lb. system. Complete with compact readout. 12V or 110AC. Load cells act as bolt-on feet.

New! Model 640 Chute Scale
Ideal for livestock weighing and herd management!

- Large weight capacity—5,000 to 10,000 gross capacity
- Herd management—compatible with various EID software packages
- Rebuilt Digital Components
- New and Reconditioned Do-it-Yourself Kits
- Special 4-H and FFA Prices
- We can Custom Build to Your Specifications

See us at Wichita Farm & Ranch Show
Booth #58-8

CENTRAL CITY SCALE
2403 26th Ave., Central City, NE 68826
ccscale@hamilton.net
www.ccscales.com
308.946.3591

ESTATE AUCTION

SATURDAY, NOVEMBER 13 — 11:00 AM

LOCATED: 411 South 14th — MARYSVILLE, KANSAS

Hand & Garden Tools; Dewalt 1/2 Inch Impact Wrench; 3 & 3 1/2 T hyd. floor jacks; 2 wheel dolly; air bubble; cable Come-Along; grease gun; battery charger; ext. cord; long chain; ammo boxes; tool boxes; creeper; hand & limb saws; pipe wrenches; tie downs; sm. SK socket set; Thorson 1/2 inch socket set; jumper cables; battery charger; battery pack; old vise; bench grinder; speed wrenches; 20 ft. alum. ext. ladder; wood step ladders; alum. step ladder; 21 inch 5 hp big wheel Yardman push lawn mower; old railroad jack; step stool; sprinklers & hoses; lawn chairs; Shop Vac; BB bags; sm. nut/bolt cabinet; wheel chair; bug zapper; elect. & hand ice cream freezers; 20 qts. oil; Homelite XL12 chain saw; sprinkling can; picnic basket; porch swing; porch glider chair; **APPLIANCES & HOUSEHOLD:** Westinghouse elect. Range; 16 ft. Kenmore refrigerator; Gibson 16 ft. upright freezer; G.E. El. dryer; Maytag washer; reclining loveseat; 2 matching recliners; glass top end table; Hammond elect. organ w/bench; dinette table & chairs; drop leaf dining table w/6 chairs; modern tea cart; glass front china hutch; buffet; chest of drawers; dresser w/mirror; 3 pc. bedroom set; 3 pc. cedar bedroom set; end tables; lamp; 3 cedar chests; sm. wood cabinet; metal wardrobe; Sanyo microwave & stand; usual run of kitchen: pots, & pans, hand appliances, glasses, dishes, cups, plates, utensils; 21 qt. Presto canner; knife set; tea towels; fans; coolers; towels & bedding; sewing baskets & items; radios; luggage & suitcases; VCR & tapes; Kirby Generation 4 upright vacuum; pictures; vases; Radio Shack table top and portable scanners; answering machine & phones; port. sewing machine; **COLLECTIBLES:** 30+ pcs. of Capo-Di-Monte porcelain; modern Carnival glass; 8 glasses w/carrier; UP railroad lantern; metal Coco-Cola cooler; colored tin pitcher & glasses; labeled lighters; 10+ pocket knives; 1920 American Boy magazine; jar of marbles; quilts; 7 modern collectible dolls; Black piggy bank; battery powered bartender in box; Avon bottles & collectibles; old 78 records; Fairfield Mint collectible cars; **JEWELRY:** 2 women's gold braided necklaces; pearl shaped ruby/diamond ring; Mother's ring; men's 14K gold ring w/diamond cluster; gold band w/small diamonds; men's knuckle diamond ring; 14K gold men's ring; other rings; few pocket watches; men's & women's watches; **COINS:** Approx. 12 Silver Dollars; 50+ Susan B. Anthony dollars; 9 half dollars; 1923 Monroe Doctrine Centennial half dollar; 50+ quarters; State & bicentennial quarters; dimes; nickels; 3 Buffalo nickels; 11 Indian Head pennies; 50+ Wheat pennies; 1943 Zinc pennies; Foreign coins; 50+ \$2 bills; belt buckles; coin bank sorter; many other items.

PICKUP & CAR—sell at 12:30: 2004 Chevy LS1500 ext. cab pickup, 5300 V8, auto, 2WD, tow package, 91,840 miles; 1988 Chrysler New Yorker Landau, 4 door, all power, V8, 108,354 miles.

TERMS: Cash sale day. Statements made sale day take precedence. Sellers & Auctioneers not responsible for accident or theft. Lunch served. For pictures & full sale bill check out websites.

ESTEL (E.L.) GROSS ESTATE

AUCTIONEERS:

Tim or Rob Olmsted
Beattie, KS, 785-353-2487
www.olmstedsalestate.com

Jeff Sandstrom
Marysville, KS, 785-562-3788
www.marshallcountyrealty.com

2011 Kansas Wheat Yield Contest rules announced

Wheat producers, get ready for the second annual Kansas Wheat Yield Contest. Sponsored by the Kansas Wheat Commission, Kansas Association of Wheat Growers and BASF, the Wheat Yield Contest not only recognizes the state's top wheat producers, but gives all farmers an opportunity to learn from their peers.

"This contest serves as an informal research project, as we will collect and share data on good management secrets from the winners," says Aaron Harries, Kansas Wheat director of marketing. "Information from the first Wheat Yield Contest will appear in the 2011 'Know Your Wheat' booklet, which will show up at grain elevators prior to harvest."

The contest includes three regions: Region 1 (Western Kansas), Region 2 (Central Kansas) and Region 3 (Eastern Kansas). Entry deadline for the 2011 Wheat Yield Contest is March 20, 2011. Producers achieving the top yield receive a \$1,000 cash prize and plaque. Contest winners will be announced next summer.

In 2010, Alvin Schmedemann, Junction City; Daneel Helvey, Ellsworth and Jon Buehler, Scott City

each won \$1,000 cash prizes for their participation in the inaugural Kansas Wheat Yield Contest.

New for 2011, farmers will be eligible to participate in a Quality Initiative of the Wheat Yield Contest. Each contest participant will be asked to submit a 5-pound sample of wheat from the contest field. The quality of that sample will be evaluated for quality components such as test weight, protein content, variety and kernel quality. Top scoring samples will be further tested in a quality laboratory, where small loaf of bread will be baked. The sample with the top quality score will receive a cash prize, too.

"High yields may capture the spotlight, but high quality captures the market," Harries says. "As we learned from the 2010 contest, good yields and quality can go hand in hand with the right management practices."

The March 20 deadline gives wheat farmers an opportunity to gauge the condition of the wheat crop as it breaks dormancy. Folks who enter the contest will be asked to share management information about their farm, including de-

tails about tillage and agronomic practices, crop protection products usage and more. A third party verifier will be employed at harvest to ensure the integrity of the contest.

Wheat farmers who are 18 years or older from throughout Kansas are eligible to participate by enrolling a plot at least five acres in size. The \$50 entry

fee will be used to defray verification costs. Producers may enter more than once, but each entry must be submitted on a separate entry form. Kansas Wheat directors, employees and spouses are prohibited from entering the contest. Contestants must use certified seed. The contest is open only to dryland fields.



Scott Schaake, center, describes the merits of one of the lots about to be auctioned at the Gold Bullion 24 Karat Females Sale held October 24 at Brooks Simmentals. The sale also included Diamond D Simmentals, Dikeman Simmentals and Schaake Farms. To Schaake's right is Col. Tracy Harl and to his left is Doug Parke of DP Sales Management.

For those who are interested in accepting the challenge, more details about the 2011 Kansas Wheat Yield Contest can be found online at www.kansaswheat.org, by

requesting an information packet via e-mail at kswheat@kswheat.com, or by writing to Kansas Wheat, 217 Southwind Place, Manhattan, KS 66503.

Call to book your
Fall Thistle
Spraying Needs

**CENTRAL KANSAS
AG
AVIATION**
**STEVE
DONOVAN**

Cellular 785-366-0513 or Office 785-258-3649
P.O. Box 246 Herington, KS 67449
Located east of Herington at the Former Military Airfield

CONSIGNMENT AUCTION

**Internet Only Multiple Locations
ENDING NOVEMBER 4**

Bring items to us, or we can come to you!

View items online or to Consign Call:

913-592-2004 or Dale: 913-285-2053

To bid or for more information go to:

www.countrywidetractor.com

Countrywide Tractor & Auction

Located just East of 191st Street & 169 Hwy.

Spring Hill, KS 66083

Open: 8-5 Tuesday-Friday & 8-12 Saturdays

AUCTION

SATURDAY, NOVEMBER 6 — 10:00 AM

2246 20th Road — GENESEO, KANSAS
From Geneseo Golf Course go 1 mile east & 2 1/2 miles north
COLLECTIBLES

Adolphus Busch Stanhope bar knife; Horsehair braided bridle by Emmet Dalton in Lansing Prison; JFK coin; large Japanese silk screen picture; National Geographic's from 1924; #6 Western crock; #5 Pittsburg crock; #3 Monmouth butter churn; 2 Japanese tea sets; German cuckoo clock; Hanson dairy scale; pine chifferrobe; blanket trunk; library table; picture frames; typeset box; large brass tray; 2 oil lamps; GI Joe & toys; feed sacks; artillery shell; electric branding iron; saddle scabbard; Army saddle; hames; several steel equipment seats; washtub; petal grinder; garden cultivator; wagon wheel rims; old bicycles.

GUNS — TO SELL AT 11:00 A.M.

Winchester # 94 - 44 magnum (SSN 3434765M); Marlin #39A lever action 22 cal.; Mosberg #151K 22 cal.; Savage 4M 22cal. w/scope; Remington #760 Gamemaster 22 pump; Winchester Buffalo Bill 30-30; JC Stevens 410 pistol; Walther Mark 2 5.6 mm long rifle (France); Walther #PP 7.65mm automatic; military 45 (M1911A); ammo.

HOUSEHOLD, FARM EQUIPMENT AND TOOLS

See full listing at oswaltauction.com

MR. & MRS. JACK HEMRY

OSWALT AUCTION SERVICE

Bill Oswalt, Little River, KS • 620-897-6354 cell 620-897-7500

LAND AUCTION

FRIDAY, NOVEMBER 12 — 11:05 AM

Russell Co. 4-H Building — RUSSELL, KANSAS
80 ACRES M/L RUSSELL CO. CULTIVATION

LAND LOCATION: 1 1/2 miles West of Van Houten St. on Homer Road, or 1 1/4 miles East of 181th St. on Homer Road.

LEGAL: East 1/2 of the Southwest 1/4 of Sec. 32, Township 13, Range 14W less R/W.

MINERALS: Owners .0492188 royalty interest to be conveyed, also a water easement.

POSSESSION: After 2011 wheat harvest with the buyer to receive the owner's 1/3 share. The buyer will pay 1/3 cost of fertilizer & chemical.

DESCRIPTION: This is very productive farm ground, with the asset of 2 producing oil wells and a disposal. It also is enhanced by 3 established wind breaks and good hunting. Would make a nice place for a home.

For Terms & Conditions go to rohlederauction.com

SELLER: RALPH A. DUMLER TRUST & DELMA I. DUMLER FAMILY TRUST
Patricia Loriaux & Leanna Walters, Trustees



Randy Rohleder - Auctioneer/Broker
815 Main - Russell, KS 67665
Office: 785-483-1501, Home: 785-637-5502
www.rohlederauction.com

AUCTION

SATURDAY, NOVEMBER 6 — 10:30 AM

Auction will be held in Kenwood Hall at the Saline Co.
Expo Center 900 Greeley, **SALINA, KANSAS**

GUNS

TOYS: inc. 1/16th toys: JD; IHC, Ford, Case, Tru Scale, Cockshutt, Oliver Silk 70, Massey, N6 Gleaner combine; red MM tractor w/man, Arcade, Marx, Tonka fire truck, dump truck, grader, truck lowboy trailer, dragline, pickup, dump truck, Wyandotte steam shovel & truck, Structo fire truck steam shovel, Buddy L hook & ladder truck, Texaco tanker.

COINS & COLLECTIBLES: 2000 silver dimes, 200 wheat pennies, 20 silver dollars; Heider Coaster wood box wagon; Red Wing crock; Western crock; blue & grape carnival glass; pens & pencils; marbles; oil cans; tins; Metz beer crock; Schlitz clock; Hamms glasses; Coors adv. pieces; comic books; Hunter, Kansas adv.; riding lawn mower; hand tools; yard tools.

See last week's Grass & Grain for full listings.

Note: We have combined 2 collections. The guns will sell first at 10:30 a.m. We will open the doors on the building at 8:00 a.m. There are several unusual guns on this auction. The owner is selling due to health reasons. Check our website for pictures at www.thummelauction.com.

Auction Conducted By
THUMMEL REAL ESTATE & AUCTION LLC
785-738-0067 or 785-738-5933

Changing markets still offer cattle feeding profit potential. Call Mary Ann for more info!

You have a FRIEND in the BEEF Business

Selling Friday, Nov. 5, 2010 @ 12:30 pm CST
78 Registered, Performance Tested.

- **20 month old Bulls** older bulls cover more cows!
- 33 100% 1A Red Angus
- 45 Black Angus
- *spring delivery option!*
- **60 Comm. Bred Heifers to Calve Spring '11**
- Black Angus, Red Angus & Baldies. *Many AI bred!*
- *Calve-out service available with our exclusive live calf guarantee!!*

At Downey Ranch
12 mi. SE of Manhattan, KS

Again this year:
Pre-register and bid online
at DVAuction.com

A whopping
+.95 Marb EPD!

Lot 46: KCC Marblin' Man 770-907

And don't forget...
Year after year, we are
THE source for heart
of the herd, true
replacement heifers.
Synched, AI'd and
offered with our
**EXCLUSIVE
LIVE CALF GUARANTEE!**

-1.8 BW EPD
with a +.95 YW EPD!

Lot 2: DRI New Answer W017

Downey Ranch, Inc.
Joe Carpenter & Barb Downey
785-456-8160
785-556-8160 mobile
www.DowneyRanch.com
Proud to be named the
BIF Commercial Producer
of the Year - 2010

Kniebel Cattle Co.
Kevin & Mary Ann Kniebel
Chuck & Kim Kniebel
785-349-2821
620-767-2180 mobile
www.KCattle.com
Proud to be named the
BIF Commercial Producer
of the Year - 2008

Proud to be founding members
**US PREMIUM
BEEF**
and
Qualified Seedstock Suppliers

From Manhattan: K-18 E 12 miles to mile marker 204. S 1/4 mile on Wabaunsee Rd.



End game

The morning chill had burned off by the time we arrived at the fairgrounds. Vic had already hammered in four metal stakes to mark the boundaries of the roque court. The dirt in the shaded arena between the horse barn and the sheep barn was packed hard as cement and rocky to boot. He'd tried leveling it with a wooden rake but it was far from uniform, still cross-crossed by tiny clawed prints.

Under his direction, I took a heavy mallet and began driving white hoops for each goalpost. Another pair were placed on the outside of the court, and in the center two were hammered to form a cross. It was all very mysterious to me.

Once I'd strung twine

linking each corner post, he showed us how the game was played. The object was to drive a polymer ball from one end to the other with the stipulation that the ball first had to traverse the double hoop in the center. This maneuver required a 45-degree angle with barely an inch to spare. It was a very tight shot.

Roque was an Americanized variant of croquet and very popular at the beginning of the 20th century — so popular that it was an Olympic sport in the 1904 Summer Games. Over the succeeding decades its popularity diminished until it's now played in only a handful of locations.

Because the mallets were short, about 18 inches in length, players had to

stoop to hit the ball. I imagined that by the end of the game a chiropractic visit would be necessary, especially considering the advanced age of the players. At its heyday most were in their sixties and a few in their nineties, and that was a long time ago.

"We used to play almost every evening," Vic said. "Of course back then we had a court by the old tennis courts, and the ground was much softer. Less rocks, too."

"And you did this for fun?" I asked. "Wouldn't heavy drinking at the bar have been more fulfilling?"

"Oh, no," he scoffed, "we had a blast."

"Did women play?" my wife asked.

For a moment Vic looked aghast. "Um, there was nothing that said they couldn't," he stammered.

We were setting up the court for a game to be played during the annual chamber of commerce soup supper. With K-State and Nebraska playing, local games of various sports plus the other diversions rural folk are privy to on weekends, we had doubts about the evening's event.

Still, nothing ventured, nothing gained, as they say. After the field was prepared, we made arrangements to meet later.

Shadows were lengthening when we returned, and temperatures had fallen precipitously. Vic and his wife, Norma, sat at a table looking like misplaced children.

"I don't think anyone's going to show up," he said.

"It's early still," I said. I sounded uncharacteristically positive but I wanted to spare his feelings. Most of the old players were either passed on or residing in the nursing home, but surely we could muster a few brave souls. "Want me to teach you how to play?" he asked hopefully.

"No, thanks," I said. I wasn't that brave.

As we waited and the sun dipped lower, Vic listened to the Huskers on the radio. My wife and Norma

made small talk. I watched nobody show up for the soup supper. After a while we went to eat. Several chamber members asked what was happening at the arena. When we explained, they all made excuses for not playing. I understood.

Still, it was tough watching Vic wait. He was the last of the old-time players and well into his prime. Time had moved on in its inimically brutal fashion leaving behind only a wasteland of memories. What he was waiting

FARM MACHINERY

AUCTION: Mon, Nov 15, 11am

From Anthony, KS: 4 mi N on K2 to 40th, 3 1/4 mi W;
From Harper, KS: 5 mi S on K2 to 40th, 3 1/4 mi W

98 NH Ford 8970 FWA; '92 JD 8760; '79 Versatile 855; '87 Frtlner w/Merritt cattle drive pot; '93 F350 dually, DewEze bed; 2-MacDon 963, 36', pu reel; MacDon 962, 36', pu reel; '04 GP drill, 35-4000 7.5" DD, liq fert; Sunflower 36' Land, #6432, finisher disc, harrow & baskets; Sunflower 35' disc #1433, C-flex bearings; Greenline Big G 30' dbl fold disc; Krause 27' chisel; Unverferth GG7000 gr cart; UFT 500 gr cart; '08 NH BR 780A rd baler; H&S hi-capacity 14 wheel rake; Degelman 14' 2-way angle blade; Mohrlang mixer feeder wagon; Lucke Sunflower pans - **KASTENS FARMS, Seller**

Add'l Property information at <http://www.uctheurerauctions.com>
Can't make it to the Auction? Bid via online at www.ProxiBid.com/theurer

Theurer Auction/Realty, LLC
800.207.6830 • www.theurer.net
United Country - Ranked No. 1 for Land Auction Sales by The Land Report, "The Magazine For The American Landowner"

FARM & HOME AUCTION

160 acres M/L Marshall County, Axtell, KS
FULLY RENOVATED VICTORIAN HOME, OUTBUILDINGS & CABINS

SATURDAY, NOVEMBER 20 — 10:00 AM
At the Fire Station's Community Center — SUMMERFIELD, KANSAS
LOCATION: 3063 Cherokee Rd., Axtell, KS — 6 miles North of Axtell, Kansas on 30th Rd., turn right 1 mile.

LEGAL: The Southeast Quarter (SE1/4) less right-of-way in Section 24 Township 1, Range 10 East of the Sixth PM, Marshall Co., Kansas.

GENERAL DESCRIPTION: One of the most beautiful places in Kansas, this property is currently operated as an organic farm, with pasturelands and lodging for hunters and guests. The farm consists of 160 acres M/L with appx. 39 acres cropland, 37.5 acres creek bottomland, with the balance in pastureland, timbered hills, road and graveled implement yard. It is open to farm and has a running creek with springs. All lands are eligible for organic certification. A beautiful 2,300 sq. ft. renovated Victorian home, three (3) guest cabins, machinery and tack sheds are included. Excellent property for farming, pastureland, hunting and recreational and guest uses.

FARM LAND: A total of 160 acres M/L adjoin the house and grounds. Thirty- nine (39) acres have been farmed organically for the last nine (9) years, yielding soybeans, corn, alfalfa, brome and native grass hay. An additional ten plus (10+) acres are terraced and currently in native grass. These acres are tillable and have been planted in row crops by previous owners. The remaining 112 acres of pastureland has been rested and burnt for the last two (2) years. All farm land is eligible for immediate organic certification. The farm is completely fenced and cross-fenced. There are metal-hinged gates, a solid low water creek crossing and three (3) automatic stock waterers. The well has been tested and is good for all uses and seems to be of an amount to consider some irrigation. The land includes six (6) healthy ponds; four (4) are spring fed. Four (4) of the ponds are stocked with bass, crappie, blue gill, sunfish and perch.

MACHINE & TACK SHEDS, OPEN HORSE ARENA: The 30'x50' shop has two sets of 12'x16' doors. A graveled implement yard is located to the north. The small, insulated tack shed has racks for six saddles; interior walls are of rough cut oak. An open horse arena and permanent 50' round pen are easily accessible from the house.

HOME & GROUNDS: Surrounded by hillside meadows and old growth forests, this 1903 Craftsman Victorian epitomizes serene country living. Its ideal setting provides panoramic views of the forested hills with spectacular vistas and the opportunity for unequalled observation of birds and wildlife throughout the year. The expansive wrap around porch and gazebo lends itself to outdoor enjoyment of the unspoiled landscape.



The 2,300 sq.ft. home was fully renovated and modernized in 2006 with all new wiring and plumbing plus a new roof and steel siding. The large, sunny, custom-designed kitchen and 3 ½ bathrooms, with two whirlpool tubs and dressing rooms, laundry/mud room, energy efficient exterior doors and double-hung windows, six panel wooden doors, ceiling fans, upscale lighting and an outdoor wood burning furnace, with propane backup, make this well-insulated home ready for the next century!

For pictures and information go to
www.landsofamerica.com/listing/471301
donprellrealtyauction.com

For inspections or inquiry Contact:
Donald Prell Realty & Auction
Marysville, KS • (Cell) 785-562-6787 • 785-799-3787
donprellrealtyauction.com

AUCTION

SATURDAY, NOVEMBER 6 — 11:00 AM

1303 Helmick Road — COUNCIL GROVE, KANSAS

DIRECTIONS: 1 mile West of Council Grove on Hwy. 56 to Helmick Rd. Turn South and go approximately 4 miles Southwest to the auction site; OR approximately 5 miles West of Council Grove on Hwy. 56 to 1400 Rd. then go South 2 miles to Helmick Rd. Turn East (left) and go approximately 1 1/2 miles. WATCH FOR SIGNS.

TRACTORS & MACHINERY
1977 John Deere 4630 cab & air, triple remotes, new rear tires, quad range, nice tractor; 1963 John Deere 4010 diesel, wide front, round fenders, runs good; 1967 John Deere 2510, gas, wide front, with KD quick tach loader, 6 ft. bucket which is in excellent condition; John Deere 8300 grain drill; John Deere 60 tractor, gas, narrow front, not running or complete, John Deere 60 tractor propane,

narrow front, not running; John Deere 50 tractor, gas, narrow front, not running; John Deere E2 flow, rough; John Deere No. 8 sickle mower; pull type gin pole with winch, rough; 30 ft. hay or grain elevator; John Deere 40 combine, salvage; John Deere 95 combine salvage; fuel barrel and various pieces of old machiner for salvage.

AUCTIONEER'S NOTE: This farm has been sold and the Seller needs to sell these items before closing. There is quite a selection of salvage iron. No small items, so be on time. We will sell the tractors at 11:00.

B.A. & C.F. BETTLES TRUST
John L. Bettles, Trustee

Terms: Cash or Good Check. Not Responsible for Accidents. Statements made day of auction take precedence over written materials. Lunch available.

HALLGREN

REAL ESTATE & AUCTIONS, LLC
ALTA VISTA, KANSAS • 785-499-5376

GREG HALLGREN 785-499-2897
JAY E. BROWN 785-223-7555

e-mail: ghallgren@live.com
www.hallgrenauctions.com • KSALink.com

A BUSHEL SAVED IS A BUSHEL EARNED.

NEW FROM GLEANER

The combine header is one of the main places where crop is lost. Crop can be missed by cutterbars that cannot flex with ground contours and material can pile on the feathering sheets. When we designed our new DynaFlex™ flexible cutterbar draper header, we created an entirely new design that moves the drapers closer to the fully flexible cutterbar allowing crop to be controlled by the reel over the cutterbar and onto the draper. The crop is then gently conveyed to a center draper and positively fed head-first into the feederhouse allowing smooth feeding with less bunching and spiking. The system gives you total control to manage varying field conditions, heavy crop, downed crop and the need for consistent feeding.

Limited-time pre-order program
Contact us today to pre-order in time for your next harvest.

GLLEANER

AGCO & Gleaner are Reg. TM of AGCO Corporation • © 2008 AGCO Corporation - GL094Cco07_FF

LYNN Kuhlman Implement
785-348-5547
MARYSVILLE KanEquip, Inc.
785-562-2377
MINNEAPOLIS Lott Implement
785-392-3110
PRATT Kincheloes, Inc.
620-672-6401

for would never come again.

After eating we joined them at their lonely vigil. Nebraska had beat Oklahoma State so he was beaming. He switched off the radio and put it away in his truck, and together they walked over to the main hall to eat. Through the open door we could see organizers standing around waiting for someone to show up.

"Ain't gonna happen," I said. A VFW member walked over to inspect the court. He remembered watching them play when he was growing up. When we asked if he wanted to try his hand at it, he said he had to prepare a firepit for the flag-burning ceremony.

By the time Vic and Norma returned the sun

teetered on the horizon. "Let's take it down," he said.

So we did, first the corner stakes and the center posts, the string which he rewound into a ball, the hoops. Everything went into a wooden box stenciled "Blue Rapids Roque Club." "I guess nobody's interested in an old game," Vic said.

After he and Norma drove off, shadows pooled in the arena as the sun dipped beyond the rim of the earth. It was easy for a moment to imagine in that gloaming the soft clatter of wood on wood, low men's voices and the scuff of feet, a velvet summer evening with fireflies lighting the creek and not a glimmer of the inevitable loss that is our only due.



The ringmen take bids at the Burlap and Barbed Wire Sale.

Photo by Tom Parker

Shroyer gives considerations for pasturing cattle on wheat

Despite dry conditions over much of western and central Kansas this fall, some areas have had enough recent rain to increase the chances of having pasture for cattle. Producers should keep several considerations in mind, however, if they plan to use their wheat fields as pasture this year, said Jim Shroyer, Kansas State University Research and Extension crop production specialist.

"Cattle should not be put onto wheat pasture until there is crown root development to anchor the plants," Shroyer said. "That may take a little longer than normal this year if growth is slowed by dry soil conditions. 'Don't just look at top growth and assume that if the wheat is tillered, crown roots have developed; sometimes that's not the case. Check some plants to make sure there is good root development. Cattle should not be able to pull the plants out of the ground as they graze.' In general, there should be 6 to 12 inches of top growth before pasturing wheat, but the true test of when the wheat is ready is to see if crown roots have developed enough that the wheat is hard to pull out of the ground, accord-

ing to Shroyer.

Producers should plan to use extra nitrogen on wheat that is being used for pasture, said Dorivar Ruiz Diaz, K-State Research and Extension nutrient management specialist. "Cattle remove nitrogen in the wheat forage. It's not uncommon to see nitrogen deficiencies in

wheat after cattle have been removed," he said. "For every 100 pounds per acre of animal gain, producers should apply another 40 pounds per acre of nitrogen in order to maintain grain yields.

"Producers should use split applications of nitrogen, with part of the nitro-

gen going on in early fall, and part of it applied as soon as the cattle are pulled off in the late winter or early spring."

Producers should have a dry area available to move the cattle to when the fields get wet. That will help limit soil compaction problems, Shroyer said.

"Your Livestock Equipment Headquarters"

 <p>Headgates Calf Tables Manual Chutes Hydraulic Chutes Tip Chutes Working Tubs & Alley Systems</p>	 <p>Electronic Scales For: Manual & Hydraulic Squeeze Chutes, Alley Platforms & Legal for Trade Group Scales</p> 	 <p>Energy Free & Energy Efficient Livestock Waterers</p>
		
 <p>Kansas Sales Office: 800-364-1605 Website: www.zeitlow.com</p> <p>Missouri Sales Office: 800-530-5158 E-mail: doug@zeitlow.com</p>		

AUCTION

SATURDAY, NOVEMBER 6 — 9:30 AM

Held at VFW Building, 1/2 mile North of Post Office
on Railroad Street — GLASCO, KANSAS

TRACTOR, VEHICLES, MOWERS, TOOLS & EQUIPMENT, BELT
BUCKLES, GUNS & WESTERN, TOYS, JEWELRY, GLASSWARE
& DISHES, ANTIQUE FURNITURE & COLLECTIBLES

See last week's Grass & Grain for listing or go to
www.wacondatrader.com for full list & pictures!

LUNCH SERVED BY GLASCO PRESCHOOL.

SELLER: JAMES R. "BUDDY" LOUTHAN

Auction Conducted by:

Auctioneer: Fred Hirsch, Glasco, Kansas
785-738-7329 (cell) • 785-568-2764

MOVING AUCTION

SUNDAY, NOVEMBER 7 — 10:00 AM

2110 Harper DG. Fairgrounds BLDG. 21

LAWRENCE, KANSAS

EVERYTHING IS IN EXCEPTIONAL CONDITION!

JOHN DEERE LAWN EQUIPMENT

JD 325 18 hp. Lawn Tractor hydrostatic w/cruise 48 in. convertible deck & Rear Bagger; JS4SB Push-Mower; JD10 Dump Cart; JD 2 wheel Lawn Sprayer; JD pull SS Spreader; JD TRX24 track Snow-Blower; Craftsman 650 Series Push-Mower; Craftsman Eager-1 Mulcher (ALL LIKE NEW!!!)

JUKE BOX & SODA SHOP

1959 Wurlitzer Stereophonic Music Juke Box w/45 RPMs including Elvis, Johnny Cash & C/W (from Plantation Steakhouse Topeka, KS); Deluxe 8 Liner HI-LO-DOUBLE-UP Poker Slot Machine; Ice Cream Set: 4 Bar Stools, Table w/4 Chairs; Jadite 1935 HB Malt Machine; Karma Hot Fudge Machine; Straw holders; Sundae, Ice Cream & Soda dishes.

JOHN DEERE TOYS

1960/70's 1/16th Scale: Pull Type Combine (Rare); Model 60 Tractor w/scoop(Rare); Model A High Post Tractor; Model 730 Tractor w/4 bottom Plow; 6600 Combine w/metal reel; other Tractors & Implements; ALL TOYS ARE EXCELLENT CONDITION!!!!

KS Sales Tax Applies!

SELLERS: ALLAN (SKEET) & VIRGINIA SMITH
Pat Swob

Auctioneers: Mark Elston & Wayne Wischropp
785-218-7851 • 785-594-0505
ELSTON AUCTION COMPANY

"Serving your auction needs since 1994"
Please visit us online at
www.KansasAuctions.net for pictures & complete listing!

COLLECTIBLES

100 yr Southwestern Bell comm. Wall Phone; Bronze Jayhawk Paperweight; 6 ft. Sleigh Bells; Planters Peanut Jars; Jade Chess Set; 1858 Mason Green Jar (RARE); Oil Lamps; 50+ Hallmark Keepsake 1980's ornaments; Stain Glass window; depression glass; stoneware sets; KU items; costume jewelry; Pink Panther.

FURNITURE/HOUSEHOLD & MISC.

Howard Miller Clock; Spinal Care King Bedroom suite; articulating Queen bed; Walnut Square Dining Table with matching chairs & 3 leaves and matching China Cabinet; Walnut Kitchen Table w/matching chairs; Corner China Cabinet; Curio Cabinet; Couch w/2 matching Recliners; Broyhill Couch; 2 matching La-Z-Boy Recliners; Riverside Entertainment Cabinet; Upholstered Chairs; GE Profile S/S Refrigerator w/ice & water; GE Flat Top Stove; matching Maytag Hvy Duty Washer/Dryer (Like New); Bookcases; SS Jenn-Air Gas Grill; Whicker & Iron Patio sets; Quilts/Comforters; yard art; Sea King 7 hp. boat motor; rods/reels & tackle; tools; many items too numerous to mention!

Low-Stress Genetic Selection

With the increasing number of factors that must be considered by cow-calf managers today, a bit of simplicity can be a welcome reprieve.

Your job: Select inputs that improve profitability OR make life easier for all in the operation.

Our job: Provide bulls that give you BOTH.

Others talk efficiency, we deliver it.

Ask for mature cow weight, height and body condition score data.

Ask for breeding info and udder scores on each female in the herd.

Ask for docility scores.

Ask to see cows over ten years old, still proliferating genetics for longevity.

For 106 years, we have used this information along with Expected Progeny Differences to improve our bulls' gain performance and carcass merit while maintaining fertile, easy-calving, long-lasting cows that have proven their worth in a variety of regions and environments.

Outputs divided by inputs: this is the TRUE gauge of beef cow efficiency.

So take the stress out of bull selection. Rest assured that—Lot 1 or Lot 111—you'll find "do-it-all bulls" that will improve profitability on the range, in the feedlot and on the rail.

That's the Dalebanks Difference.

Annual Bull Sale
Saturday, November 20, 2010
12:30 p.m. • Eureka, Kansas

111 yearling and coming 2-year-olds



The Perriers
1021 River Road
Eureka, KS 67045
Tom: (620) 583-6956
Matt: (620) 583-5033
www.dalebanks.com



It's time for fall applied winter annual weed control

By David G. Hallauer
Winter annual weeds are now starting to rear their ugly heads. Fall is an excellent time to get a jump-start on them prior to next spring with several options.

For residual control, consider atrazine. If going to corn, other residual herbicide options include an ALS herbicide such as Autumn or Basis. ALS-resistant marestail will survive Autumn or Basis treatment if applied alone. For burn-down, producers should mix in 2,4-D and/or glyphosate. Aim and Rage D-Tech are other non-residual, contact herbicide options.

One half to two pounds (maximum)/acre of atrazine, usually with 1 to 2 pint/acre of 2,4-D LV4 or LV6 added, can give good burn-down of winter annual broadleaf weeds — such as henbit, Virginia pepperweed, prickly lettuce, field pansy, evening primrose, and marestail — and small non-tillered winter annual grasses. Atrazine residual should control germinating winter annual broadleaves and grasses. When higher rates of atrazine are used, there should be enough residual effect of the fall-applied atrazine to control early-spring germinating summer annual broadleaf weeds such as kochia,

lambsquarters, wild buckwheat, and Pennsylvania smartweed.

Tank mixing 2,4-D with atrazine enhances control of all broadleaf species. It is especially important for common dandelion, henbit, marestail, and prickly lettuce control. The low-volatile ester formulations should be used, as they tend to be more potent than amine formulations, pound for pound. While it is always important to manage herbicide drift, herbicide applications made after fall frost have less potential for drift problems.

If fall treatments control volunteer wheat, winter annuals, and early-emerging summer annuals right up to planting corn or sorghum, then at planting time only a light preplant tillage or a pre-emerge grass and broadleaf herbicide application with glyphosate or paraquat will be needed to catch newly emerged weeds. Soils will be warmer and easier to plant where winter weeds were controlled in fall. Fall applications during the last couple of weeks of October and through November can greatly assist control of difficult winter annuals and should be considered when performance of spring preplant weed control has not been adequate.

Grazing management teleconferences held monthly

Join other graziers from across the state of Kansas in a monthly telephone conversation with Kansas grazing and forage experts Gary Kilgore (K-State), Keith Harmony (K-State), and Dale Kirkham (Kansas Rural Center) at 7:30 p.m. on November 8, or the second Monday of every month. Hosted by the Kansas Rural Center, these informal discussions will cover all aspects of grazing management. This call is open to any farmer, rancher, or educator interested in grazing. Participants are encouraged to bring grazing related questions to the call. Discussions frequently cover topics including forage establishment and management, comple-

mentary forages for extending the grazing season, grazing management topics, and ideas for improving profitability and management of natural resources.

Anyone can join in the call by simply dialing in 1-888-387-8686. You will then be prompted to dial in a Conference Room Number. Please dial in 4699043 and follow it with the # sign. This will be a toll free call. You are welcome to leave or join the call at anytime between 7:30 and 9 p.m.

For more information please contact Jason Schmidt at 316-461-3243. To receive an email reminder for the call, send a request to Jason at jason_schmidt20@hotmail.com.



Heath Klein, Atwood, Kansas, studies the catalog among the pens at the Burlap and Barbed Wire sale.
Photo by Tom Parker

ANTIQUE AUCTION

SUNDAY, NOVEMBER 7 — 11:00 AM
1401 NE Winfield - TOPEKA, KS
Furniture, Glassware, Pottery, Native American Collectibles, Guns, Primitives, Pinball Machine, Sports Cards, Great Toys & More!
See oldemillauction.com for full list and pictures
or call 785-233-7700 for sale flyer.

RECREATION AUCTION

SATURDAY, NOVEMBER 6 — 10:00 AM
6460 N. Broadway — WICHITA, KANSAS
Boats, Jet Skis, RV's, 4-Wheelers, Trailers
See our webpage: newcomauction.com
316-744-9950

Rex B. Newcom
316-393-6637



Jack Newcom
316-250-0077

AUCTION

SATURDAY, NOVEMBER 6 — 9:00 AM
We will sell the following items at public auction at our farm located 20 miles south of Clay Center or 13 miles northeast of Abilene at 3331 Highway 15.

TRACTORS AND MACHINERY - SELL AT 11:00AM
1965 John Deere 3020 diesel tractor, WF, buggy top, front weights, 18.4X34 rear tires are like new, ser.#113RO68475R, 8883.5hrs., bought new by the Reillys, very nice; 1961 John Deere 3010 diesel tractor, WF, one SVC, local tractor, bought new by Frank Thurman, ser.#11T15443, has Welco high lift loader w/triple valve control joystick and 7ft. bucket, nice unit; John Deere Gator 2WD utility vehicle, lights, tilt bed, 997.9 hrs., excellent; 6ft. 3pt. rotary mower; Ag-Air 3pt. mist blower w/55 gal. poly tank, VG; Gleaner C2 gas combine w/cab, 16ft. header; 6&1/2X8&1/2ft. utility trailer, 15" sides, fenders, tailgate, lights, single axle w/good16" tires, VG; Cobey 4 wheel trailer w/flatbed hayrack, good tires; Winco 25,000 watt generator on 2 wheel trailer; old transfer pump w/elec motor on wheels; JD 12ft. tandem disk, good; Cherokee 8ft. hyd. rear blade; Welco drag type bale accumulator; shop built post hole digger.

FARM RELATED ITEMS - LATE AM, EARLY PM
500 gal. diesel tank w/110V pump, VG; 300 gal. gas tank on stand; oil shed supplies; oil & other fluids; pair of 11L-15.5 impl. tires on JD 6 bolt rims; grass/alfalfa seeder attachment for old JD drill; tire chains; old motors; wiring; small engines; old JD block; possibly D; old tranny; lots of misc. lumber; 15 gal. 12V sprayer; Craftsman 5hp rear tine tiller w/17" counter rotating tines, good; good push mower; old hog huts; welded wire hog panels; old hay; ladders; misc. iron.

SHOP TOOLS, ANTIQUES, MISC. - SELL FIRST
Old 7ft. long metal lathe, VG; 7ft. tall hyd. press; cutting torch; 24"X4" Lakes anvil on stand, good edges; HD grinders; old Hammett "Rancher" 180 amp arc welder; table saw; lg. Craftsman tool box on wheels, has 2 top boxes; HD pwr. hacksaw; 2 standing drill presses; lg. vises; variety of sm. pwr. tools; lots of drill bits; Stihl MS211C chain saw; JD filters and other parts; lots of old tractor and machinery parts; floor jacks; 10 good log chains; lg. quantity and variety of good hand tools of all kinds; shop manuals; lots of metal shop cabinets; battery charger on wheels; old Caterpillar greaser; many other items found in a well equipped farm shop; Handyman jack; old IH 1&1/2hp stationary gas engine, free & looks good; ice tongs; hand corn planter; old wrenches; collectible pocket knives; old German bayonet; tin Moormans sign; JD high pressure cylinder.

THE FOLLOWING ITEMS HAVE BEEN CONSIGNED AND WILL BE SOLD IN THE AFTERNOON UPON COMPLETION OF THE REILLY AUCTION
Gehl #1870 big round baler w/elec auto tie, always shedded, VG; shop built 20X8ft. tandem axle trailer w/2" treated lumber floor; 4 wheel trailer w/8X14ft. grain bed; 8X12ft. bumper hitch dual wheel trailer w/hoist; Chevy truck w/427 motor, 5X2 speed axle; Allis Chalmers 60 pull type combine, new canvasses, never rained on, field ready; 1960 Case 1000 self propelled combine, 14ft hdr., never rained on; converted 2ton 4X4 truck w/Dual loader, used to load hay in field; Massey 36 SP combine w/9ft. snow blade; 1971 Chevy pickup, no motor; lots of 71 Chevy pickup parts; Danheuser post hole digger; IH 8X20 dbl. disc grain drill; Melroe 9"X18 single disc grain drill; PTO buzz saw; 1 row corn binder; 8X18ft. van storage box, good; 8X24ft. storage shed or cabin, can deliver; 80 gal. propane tank; good Miller wire welder; log splitter; Simplicity 20hp hydrostatic tractor mower w/46" deck, good; MTD 17hp hydro tractor mower w/42" deck, good; 2 poulan 2375 Wild Thing chain saws, VG; 2 Homelite weed eaters, VG; 12V motors; 110 & 220V elec motors; hyd. cylinder; handyman jack; 16hp Briggs & Stratton motor; like new raycheting calf puller; other possible items.

NOTE: The Reillys have been on this farm for generations. They had their first auction a year ago and are now cleaning out the sheds and selling the remaining items. There may be surprises sale day. Google kretzauctions.com

TERMS: Cash or good check Day of Sale. Not responsible for accidents.

CLERK: Vern and Kelly Rock, 1104 South Washington, Abilene, Ks. 67410

LUNCH: Clay Center Presbyterian Church

DUANE & LOIS REILLY, SELLERS

Google kretzauctions.com
Auction conducted by
Kretz, Hauserman, Bloom Auction Service
Greg: (785) 926-4422 Cell: (785) 630-0701
Gail: (785) 632-3062 Cell: (785) 447-0686
Chad: (785) 632-5824 Cell: (785) 632-0846

ANTIQUE AUCTION

SUNDAY, NOVEMBER 7 — 10:00 AM
Auction will be held in Kenwood Hall at the Saline Co. Expo Center 900 Greeley in **SALINA, KANSAS**

FURNITURE: Eastlake walnut bed, marble top dresser & commode; Victorian walnut umbrella stand w/marble; burled walnut gentleman's desk; Bartley Leeds walnut grand father clock; Victorian fireplace screen; Eastlake turtle top walnut parlor table; oak curved glass claw foot china cabinet; oak 5 section stack bookcase; child's oak roll top desk; child's ice cream table & 4 chairs. **GLASS:** Cut glass; Royal 13 pc. pitcher & bowl set; Royal Doulton Toby mug; hand painted plates & bowls; vaseline glass; Limoges signed bowl. **IVORY & COLLECTABLES:** 22 pieces of genuine hand carved ivory made in British Hong Kong; Waconda Water crock jug; Remington bronze "Gun Fighter" statue; pictures; clocks; hand painted rocking horse; beaded Indian pieces; Indian tourist pieces; movie posters; 2 quilts; birch leaf crock; Crown blue band water crock; 12 wooden planes; coins inc.: 500 Peace dollars, silver quarters, 157 Franklin halves, 87 walking halves, 300 silver Kennedy halves, proof sets.

See last week's Grass & Grain for full listings.

Note: This is a private long time quality collection out of a central Kansas home. The furniture is very quality. We will sell the coins at 11:00 a.m. Check our website at www.thummelauction.com for pictures.

Auction Conducted By
THUMMEL REAL ESTATE & AUCTION LLC
785-738-0067 or 785-738-5933

162 ACRES • LYON COUNTY • 2 TRACTS

AUCTION

TUESDAY, NOVEMBER 9 — 7:00 PM
Best Western Hospitality House (Flint Hills Room)
3021 W. Hwy. 50 — **EMPORIA, KANSAS**

PROPERTY LOCATION: From Emporia, Ks from I-35 and Hwy. 99. Take Hwy. 99 North 14 miles to Rd. 280, 1/2 mile East on 280 to Tract 1. Property is on North side of the road. 1/2 mile North of Rd. 280 on Hwy. 99 to Entrance Rd. of Tract 2, on the East side of Hwy. 99 and South side of Kansas Turnpike. Watch for signs.

TRACT 1: 80.1 ACRES: Rolling Flint Hills with a beautiful stand of native grasses. 57.4 acres are in CRP with contract expiring Sept. 30, 2012. Balance is in native hay meadow with a small pond.

TRACT 2: 82.4 ACRES: A rolling Flint Hills pasture of native and mixed grasses. Watered by a very nice pond with an overflow pipe.

All statements made evening of auction take precedence over advertisements or prior announcements.

INSPECTION: Any time with contacting Griffin Real Estate & Auction Service, LC. Numbers listed below.

AUCTIONEER'S NOTE: The Snyder family has owned this land since 1937 and 1943. Call for showing. I will look forward to seeing you at the auction!

See Oct. 19th Grass & Grain for pictures & complete details

SELLER: WILLIAM (BILL) & NAOMI SNYDER

RICK GRIFFIN
Broker/Auctioneer
Cell: 620-343-0473

CHUCK MAGGARD
Auctioneer
Cell: 785-256-3914



Griffin Real Estate & Auction Service LC

305 Broadway
Cottonwood Falls, KS 66845
Phone: 620-273-6421 • Fax: 620-273-6425
Toll Free: 1-866-273-6421

In Office: Nancy Griffin, Heidi Maggard
Email: griffinrealestate@sbcglobal.net
www.GriffinRealEstateAuction.com

AUCTION

SATURDAY, NOVEMBER 6 — 9:30 AM
LEBO, KANSAS

The following surplus materials will sell at public auction located at the **LEBO, KANSAS. KAN BUILD, INC. Plant at 2750 Fauna Rd., Lebo, KS. (Exit I-35 at Lebo, Ks. Then South approx. 3/8 mi, then West to Auction).**

TRUCKS & FORK LIFT
2003 Ford F-350 4 x 2 Crew Cab Dually, 5 sp, Ladder Rack, Tool Chest, GN Hook-up, Runs Good, SELLS WITH RESERVE; 1986 Chevy 8.2 L DsITruck-Tractor, 5th Wheel & Tail Hook, Single Axle, Day Cab w/ 84,000 mi.; 1985 Clark Fork Lift C 500HY80 Gas Manual 3 sp Trans, 2 Stage Mast, not running.

LUMBER
60 — 2 x 12 x 20 ft; 100+ 2 x 10 x 12 ft or 14 ft; 50+ 2 x 12 — Random Length; 50+ 2 x 8 x 16 ft; 50+ 2 x 8 x 12 ft; 150+ 2 x 8 x 12 or 14 or 16 ft; 5 — 14 ft x 3 1/2 in / 16-11 ft x 3 1/2 in, 21-13 x 3 1/2 in Floor Truss for 2 x 12 Floor Systems.

11 Prefinished Cabinet End Panels; 152 Cabinets Assorted Woods, Colors—Styles; 150 Assorted Merrilat Cabinet Doors; 30 Assorted Cabinet Drawers; 12 Tall Cabinet Fronts w/ Doors; 9 Assorted Metal Clad-Wood Windows; 48 Assorted Vinyl Windows Almond/White; 50 Assorted Single/Twin Vinyl Windows; 15 Commercial Bullet Proof Exterior Windows & Frames; Selection Exterior Window Sashes & Screens; 25 Various Style & Size Interior Doors; 15 Patio Doors; Selection of Broan 'Duct Free' Bath Fan/Lights; 4 Onyx Marble Bath Tops; 2 Stainless Kitchen Sinks; 2 Solid Surface 'KARPAN' White Kitchen Sinks; 7 — 3 ft Ext. Therma-Tru Ext. Door Cores Owens-Corning 4 ft Blanket Insulation Approx. 500 ft; 22 Pair Various Style Vinyl 14 in Shutters; 220 sq ft 12 x 24 in Ceramic Flooring; Assortment of Oak Base & Casing; 11 Painted Int. Hollow Core Doors; 39 Oak Int. Hollow Core Doors; 16—2 Panel Hollow Core White Int. Doors; Hail Screen 1/4 in Approx. 500 sq ft.; Approx. 150 ft Assorted Lengths & Colors Laminate Tops; Selection of Paint—Some Shingles—PVC Pipe—Flue Pipe, Etc.; Whole

House Fan 30 in; Window Cart; Lumber Bander; Skil Dual Action Sander; B & D Belt Sander; Souix 1/2 in Air Drill; B & D Pro Jig Saw; Milwaukee Angle Drill; Milwaukee Saws-All; Makita 1/2 in Electric Impact; B & D 3 x 24 Belt Sander; Several Wet & Dry Vac's; 7 Louisville Various Style Ladders, Mostly Extension; 3 Werner Aluminum Planks; 2 Ladderman 10 ft Ladders; Bauer 24 ft Fiberglass Ext. Ladder; LARGE Assortment of Various Related Tools in Various Stages of Condition & Working Order; Budget 2 Ton Hoist; 12 Gripper Carpet 12 ft Bars; Heatilator 36 in Wood Burning Fireplace; Selection of Int. & Ext. Door Locksets; Miscellaneous Shower Doors—Parts & Pieces; 1 Electric & 1 Gas Water Heaters; Large Assortment of Int. & Ext. Doors, Oak Spindles, Drip Edge, Hinges, Hardware, Fittings, Light Fixtures, Etc.; Good Assortment Plumbing Fixtures; Simpson Foundation Tie Down Straps; Selection of Office Chairs & Desks, Phones, Etc.; Air Compressor Tank, 121 Gallon; Approx 33 — 8 to 30 in. Various Length Wide Flange Steel Beams; Approx 52 Various Large Size I-Beams.

MODEL HOMES
*Sale is Subject to Homes Remaining Unsold Prior to Auction Day
2 Thurman Creek 102 Models 1375 sq ft, 3 Bedroom, 2 Bath Ranch, Offered w/ \$79,500 Reserve (each); Berrington—Model 3 Bedroom, 2 Bath, 1912 sq ft Ranch w/2 car attached garage, Offered w/ \$140,000 Reserve; Log Sided Cabin 12 x 16 ft with Loft, 3/4 Bath, Small Kitchen Offered w/\$17,500 Reserve. **Homes and Cabin Reserve Includes Delivery and Set on Your Land and Foundation within 50 Miles of Lebo, KS - SOLD "AS IS". For Info on Home, Matt 620-256-6555 or Ryan Scott, Kan-Build, Inc., M-F 9-4 pm**

MANY OTHER RELATED ITEMS NOT LISTED. PLAN TO ATTEND RAIN OR SHINE. MOST WILL SELL INSIDE. All Building Material—Tools—Etc. Sells to Highest Bidder w/ No Reserve. *KANSAS SALES TAX APPLIES. PRE-AUCTION INSPECTION: THURSDAY, NOV. 4, 4:00-7:00 PM & FRIDAY, NOV. 5, 1:00-6:00 PM. Lunch by Happy Trails Chuckwagon.

NOTE: KanBuild, Inc. will sell at Auction Surplus material and equipment. There will be many, many related items not listed. All items will sell in present existing AS-IS condition. This will be a great opportunity to buy building materials and tools. **TWO RINGS WILL RUN PART OF THE DAY.**

KAN-BUILD, INC., SELLER
BEATTY & WISCHROPP AUCTIONS, Lyndon, KS • 785-828-4212
ELSTON AUCTIONS, Mark Elston
View pictures at www.beattyandwischropp.com

GRASS & GRAIN Auction Sales Scheduled

November 3 — Antiques, collectibles, household, guns, signs, traps, farm collectibles at Concordia for Janice Ramsey Estate. Auctioneers: Thummel Real Estate & Auction, LLC

November 4 — Gas & oil adv., antiques, country store items, vintage toys & trains, household, kitchen, tools, shop & misc. at Newton. Auctioneers: Road Runner Sales.

November 4 — Unreserved farm machinery auction at Tecumseh for Harold J. & Novallene Bernhardt. Auctioneers: Stock Auction Company.

November 4 (bidding ends) — consignments online only (www.countrywidetractor.com). Auctioneers: Country Tractor & Auction.

November 5 — Land at El Dorado. Auctioneers: Sundgren Realty, Inc.-Land Broker Division.

November 6 — Tractor, skid steer, machinery, trucks, cars, trailers, livestock equip., ATV, lawn & shop equip., lumber, tools S. of Moline for Larry & Marilyn Galvan. Auctioneers: Walter Auction Service.

November 6 — Guns, toys, coins & collectibles at Salina. Auctioneers: Thummel Real Estate & Auction, LLC

November 6 — Auction at Holton for the James Ketron Estate. Auctioneers: Pagel Realty & Auction.

November 6 — Harley Gerdes consignment auction at Lyndon.

November 6 — Tractor, antique toys & collectibles, jewelry, glassware & dishes, antique furniture & collectibles at Glasco for James R. (Buddy) Louthan. Auctioneers: Fred Hirsch.

November 6 — Farm machinery, JD Gator, tools, misc. NE of Abilene for Duane & Lois Reilly. Auctioneers: Kretz, Hauserman, Bloom Auction Service.

November 6 — Surplus building material and equipment at Lebo for Kan-Build, Inc. Auctioneers: Beatty & Wischropp Auctions.

November 6 — Boats, jet skis, RVs, 4 wheelers,

trailers at Wichita. Auctioneers: Newcom Auctions.

November 6 — Antiques, collectibles, adv. items, toys, glassware, pottery, truck, furniture, kitchen-ware at Topeka for Jim Spencer Estate. Auctioneers: Prudential First Realtors Auction Dept.

November 6 — Tractors, truck, farm machinery, mowers, farm related items at Goessel for area seller and Francis Funk Estate. Auctioneers: Van Schmidt Auctions.

November 6 — JD tractors, machinery & salvage iron at Council Grove for Bettles Trust. Auctioneers: Hallgren Real Estate & Auctions, LLC.

November 6 — Building materials at Hutchinson. Auctioneers: Flint Hills Auction.

November 6 — Tractors, Arcade coin operated rides, guns, collectibles at Manhattan for Gary & Verda Gharst. Auctioneers: Gannon Real Estate & Auctions.

November 6 — Collectibles, guns, household, farm equip. & tools at Geneseo for Mr. & Mrs. Jack Hemry. Auctioneers: Oswalt Auction Service.

November 7 — Furniture, glassware, pottery, Native American collectibles, guns, primitives, pinball machine, sports cards, toys at Topeka. Auctioneers: Olde Mill Auction.

November 7 — Furniture, glass, ivory, collectibles at Salina. Auctioneers: Thummel Real Estate & Auction, LLC

November 7 — JD lawn equip., juke boke & soda shop, JD toys, collectibles, furniture, household & misc. at Lawrence for Allan (Skeet) & Virginia Smith. Auctioneers: Elston Auction Company.

November 7 — Collector tractors & toys, farm equipment woodworking, meat processing, metal working & misc. at Bucyrus for Mr. & Mrs. Gene Trageser. Auctioneers: Webb & Associates.

November 7 — 2nd "Shades" Show Calf Sale at Clay Center. Manager: Lori Hambright.

November 7 — Auto, gas

engines, boat motor, snow blower, collectibles, household, guns & misc. at Odell, NE for Rudy & Marilyn Novotny. Auctioneers: Jurgens, Henrichs, Hardin.

November 7 — Tractor, farm equipment, shop & hand tools at Osage City for Mrs. Chris "Jim" Hill. Auctioneers: Beatty & Wischropp Auctions.

November 7 — Furniture, appliances, collectibles at Council Grove for Ora Jean Glessner. Auctioneers: Hallgren Real Estate & Auctions, LLC

November 8 — Art, antiques, collectibles at Salina for Levoy Nelson Estate. Auctioneers: Thummel Real Estate & Auction, LLC

November 8 — Republic County land at Munden for Kenneth Schultz. Auctioneers: Roger Novak Real Estate.

November 8 — Farmland NW of Hanover for the Urban & Marie Doebele Trusts. Auctioneers: Raymond Bott Realty & Auction.

November 9 — Lyon County grassland at Emporia for William (Bill) & Naomi Snyder. Auctioneers: Griffin Real Estate & Auction Service, LC.

November 9 — Potawatamie County land at Onaga. Auctioneers: Farmers National Company.

November 9 — Tractors, spray coupe, truck, trailers, pickups, machinery, livestock equip., shop, tools & misc. S. of Garden City for Pete Staley & Neighbors. Auctioneers: Larry Johnston Auctions.

November 10 — Tractors, trucks, vehicles, skid-steers, trailers, tillage, planting, harvest, haying, construction, livestock & shop equip., ATV online only (www.bigiron.com). Auctioneers: Stock Auction Company.

November 11 — Real estate at Manhattan. Auctioneers: West Central Auction Company.

November 11 — Furniture, antiques & misc. E. edge of Concordia for Charlene Graham Estate. Auctioneers: Larry Lagasse Auction & Real Estate.

November 12 — Grassland W. of Linn for Mildred Beikmann. Auctioneers:

Bott Realty & Auction. November 12 — Russell County real estate for Ralph A. Dumler Trust & Delma I. Dumler Family Trust. Auctioneers: Rohleder Auction & Realty.

November 13 — Tools, appliances, household, collectibles, coins, pickup & car at Marysville for Estel (E.L.) Gross Estate. Auctioneers: Jeff Sandstrom & Tim or Rob Olmsted.

November 13 — Household & antiques at Clay Center for Smith Estate. Mugler Auction Service.

November 13 — Simmental, SimAngus, Angus and Red Angus bulls at Wheaton for Moser Ranch. Auctioneer: Dan Harris.

November 13 — Chase County real estate at Cottonwood Falls. Auctioneers: Griffin Real Estate & Auction.

November 13 — Farm machinery, tools, antiques, primitives NW of Washington for Evelyn Graham Trust. Auctioneers: Raymond Bott Realty & Auction.

November 13 — Real estate NW of Washington for the Evelyn Graham Trust. Auctioneers: Raymond Bott Realty &

Auction.

November 13 — Furniture & collectibles at Wilsey for Earl Davies Estate. Auctioneers: Hallgren Real Estate & Auctions, LLC.

November 13 — Tools, antiques, collectibles, recreational items, shop, garden, misc., household, vehicles, mowers at Wells for Charles H. Miller Estate. Auctioneers: Bid-N-Buy Auctions.

November 14 — Truck farming machinery & equipment at Manhattan for Robert Brown. Auctioneers: Raymond Bott Realty & Auction.

November 15 — Farm machinery near Anthony for Kastens Farms. Auctioneers: Theurer Auction, Realty, LLC.

November 15 — Grassland at Washington for the Heirs of Myrtle Koenke. Auctioneers: Bott Realty & Auction.

November 15 — Shawnee County real estate SE of Topeka for Venita Moreland Estate. Auctioneers: Wayne Wischropp-Century 21 Miller & Midyett.

November 17 — Dickinson County cropland & grassland at Abilene for Virginia Ovenstone. Auctioneers: Riordan Auc-

tion & Realty.

November 17 — Southwestern Wilson Co. land at Fredonia for Jack Spaht. Auctioneers: Larry Marshall Auction and Realty. November 18 — Chase County ag land at Cottonwood Falls for Kaltenbacher Charitable Trust. Auctioneers: Griffin Real Estate & Auction Service, LC.

November 18 — Cropland, homestead, hunting land in Wilson County for Caryn Gudde. Auctioneers: Larry Marshall Auction & Realty.

November 19 — Farm machinery at Clay Center. Auctioneers: Mugler Auction Service.

November 20 — Tractors, truck & equip., tools, collectibles & misc. at Lawrence for Margaret C. & the late Ross E. Wulfkuhle. Auctioneers: Mark Elston & Jason Flory.

November 20 — Marshall County real estate, Victorian home, outbuildings & cabins at Axtell. Auctioneers: Don Prell Realty & Auction.

November 20 — NE Clay County CRP land & farmland N. of Green for Steve (Red) & Carol Hilt-

Continued on page 16

ESTATE AUCTION

SATURDAY, NOVEMBER 6 — 9:30 AM

2401 S.W. Rother — TOPEKA, KANSAS

Excellent variety of Antiques & Collectibles - paper, adv. items, RR, character items, Toys, Glassware, Pottery, Sports, Primitives, Super KC Co. oak pool cue rack, Smalls, Photographs and **MUCH MORE!**

TRUCK (11:00 AM): 2002 Ford Ranger XLT, V6, Reg. Cab, 2WD, long bed, bed liner, auto, air, cruise, AM/FM/CD, 117K.

ALSO SELLING: Furniture, Computer, Kitchen Items, Washer, Dryer, Few Tools, Packing/Shipping Supplies.

We may run 2 rings at start of sale. See www.garyhenson.com for detailed list and pictures. Lots of neat items, join us! Concessions.

JIM SPENCER ESTATE

PRUDENTIAL FIRST REALTORS AUCTION DEPT.
WAYNE HUNTER, CAI: 785-554-3049
GARY HENSON, 785-845-7855

FLINT HILLS CHASE COUNTY AUCTION

SATURDAY, NOVEMBER 13

2:00 PM

Community bldg Swope Park, Cottonwood Falls

33.5 ACRES

Located just east of Cottonwood Falls on Rd 167. Watch for signs. Bluestem grass with small pond. High vantage points to see for miles.

See pics and full salebill @ GriffinRealEstateAuction.com

Griffin & Auction Real Estate Service LC

RICK GRIFFIN, Broker/Auct.
Cell: 620-343-0473
CHUCK MAGGARD, Auct.
Cell: 785-256-3914

305 Broadway, Cottonwood Falls, KS 66845
620-273-6421 • Fax: 620-273-6425 • Toll Free: 1-866-273-6421
Office: Nancy Griffin, Heidi Maggard
griffinrealestate@sbcglobal.net
www.GriffinRealEstateAuction.com

PUBLIC AUCTION

SATURDAY, NOVEMBER 6 — 10:00 AM

HUGE BUILDING MATERIALS AUCTION

Stock from Major Distributors Open to the Public

Auction held at Kansas State Fairgrounds

The Sunflower North Building, 2000 N. Poplar

HUTCHINSON, KANSAS



CABINETS, DOORS, FLOORING!



Complete semi-custom kitchen cabinet sets and prefabricated granite countertop sets for easy install. Over 1 dozen sets of current inventory from the Faircrest semi-custom kitchen cabinet line. Consigned from full line distributor. Additional cabinet pieces will be available to complete your custom dream kitchen. Features include: dove-tail drawers, self closing and ball bearing drawer slides, all solid wood and plywood construction — NO PARTICLE BOARD! DOORS (INTERIOR & EXTERIOR), SCREEN DOORS, LOCK SETS, GAS FIRE-PLACES, BANISTER RAILINGS, SPINDLES, VANITIES, FAUCETS, SHOWERS, SINKS AND A WHOLE LOT MORE! 3/4" HARD WOOD FLOORING, LAMINATE FLOORING, TILE, 12" AND 18".

DON'T MISS THIS SALE!

For More Pictures & Information:

flinthillsauctions.com

13% Buyers Premium with 3% discount for cash customers. Applicable sales tax added to all purchases. All items must be removed by Sunday, Nov. 7 at 2 pm. Cash, good check and Visa/Mastercard accepted. All items must be paid for on sale day.

AUCTION



SUNDAY, NOVEMBER 7 — 12:30 PM

MORRIS COUNTY 4-H BUILDING, 612 US Hwy. 56 — COUNCIL GROVE, KS

DIRECTIONS: 1 mile East of Council Grove on US Hwy. 56. WATCH FOR SIGNS.

APPLIANCES & FURNITURE

Maytag stainless steel front side by side refrigerator, 1 year old, water & ice maker in the door with a bottom freezer, like new; Maytag Epic Z front load washer & dryer, 1 year old, white, like new; stainless steel Amana Radarrange microwave; 32" Toshiba high definition LCD TV, 2 years old; TV stand; light brown distressed material sofa, like new; La-Z-Boy recliner & Lane recliner; maple china hutch; dining table & 6 chairs; occasional chair with Queen Anne legs; JD oak curio cabinet; 2 oak bar stools; walnut wall hugger table; walnut occasional table; touch lamp; lamps; queen size bed, pillow top mattress, very good; walnut desk; dinette table & 2 chairs; queen size bed & dresser with mirror, very good; oak ladies rocker; metal patio table & 2 chairs; 4

drawer stainless steel cabinet; small stainless steel gas grille; metal plant stands; Amana side by side refrigerator ice & water in the door, white; Frigidaire gas range smooth top, white, very good; SW style sofa & love seat; oak entertainment center, 6 ft. x 5 ft., very nice

GLASSWARE, COLLECTIBLES & MISC.

Amber carnival sugar & creamer; amber fluted vase; small bowl; 15 pcs. Fenton including horses, fluted bowls, plates, vases, etc.; 8 place setting of crystal dishes bought in 1939 from Flowers Jewelry Store in Junction City; kerosene lamps; small farm prints; new puzzles;

AUCTIONEER'S NOTE: Excellent offering of like new furniture, appliances and collectible items. Seller has moved to an apartment and is downsizing and selling her house. If you are in need of appliances or furniture don't miss this opportunity. For pictures go to www.hallgrenauctions.com

ORA JEAN GLESSNER

KU & KSU items clock, book bags, etc.; Bearfoot figurines; NASCAR items; Georgia Marble Co. tractors & cars; Willow Tree figurines; copper bracelets; cobalt blue S&P's; bird figurines; various other figurines; Stone Post items; Frankoma plates & cups; die cast banks, cars, trucks & airplanes; Oneida community plate flatware; violin & bow; HP A10 printing mailbox; concrete yard art; various kitchen appliances; Kirby Sweeper with shampooer & attachments, new; JD windmill 8 ft.; various hand tools; exercise equipment; corn stove vacuum.

HALLGREN

REAL ESTATE & AUCTIONS, LLC

ALTA VISTA, KANSAS • 785-499-5376

GREG HALLGREN
785-499-2897

JAY E. BROWN
785-223-7555

e-mail: ghallgren@live.com

www.hallgrenauctions.com • KSALink.com



Terms: Cash or Good Check. Not Responsible for Accidents. Statements made day of auction take precedence over written materials. Lunch available.

Auction Sales Scheduled

Continued from page 15

gen. Auctioneers: Raymond Bott Realty & Auction.

November 20 — Grassland/hunting land, farm machinery & tools N. of Erie for Everett & Patricia Olson. Auctioneers: Larry Marshall Auction & Realty.

November 20 — Large machinery and livestock equipment at Perry for Hemme Farm & Ranch. Auctioneers: Murray Auction.

November 20 — Farm machinery at Green for Vance & Andrea Richter. Auctioneers: Jay Brown Auction Service, Greg Hallgren.

November 21 — Antiques, collectibles, guns & furniture at Council Grove. Auctioneers: Hallgren Real Estate & Auctions, LLC

November 21 — Annual Angus production sale at Enterprise for Hedge-wood Prairie & Friends.

November 23 — Saline County farmland at Salina for Lisa McCool (Burleson, Texas) & Cody Choate (Crowley, Texas). Auctioneers: Riordan Auction & Realty.

November 27 — Antiques, collectibles, furniture at Council Grove. Auctioneers: Hallgren Real Estate & Auctions, LLC.

November 30 — Land at Randolph for Diana Rothlisberger. Auctioneers: Midwest Land and Home, Mark Uhlik, Broker/Auctioneer.

November 30 — Greenwood Co. pasture at Madison. Auctioneers: Sundgren Realty, Inc.

December 1 — Chapman Creek bottomland & grassland at Abilene for the James Green Trust. Auctioneers: Riordan Auction & Realty.

December 4 (www.proxi-bid.com) — Tractors, hay equip., vehicles & farm equip. N. of Beattie for the Estate of Frank Koch Trust. Auctioneers: Auction Specialists, LLC.

December 4 — Farm machinery, truck, trails, ATV, livestock equip., shop tools, fuel tanks & misc. at Altoona for Mrs. John W. Walker. Auctioneers: Olin Goins, Larry Marshall, Mark Garretson.

December 15 — Dickinson County grassland at Abilene for Ilene Ansberry Estate. Auctioneers: Riordan Auction & Realty.

January 1, 2011 — 26th annual Harley Gerdes New Year's Day consignment auction at Lyndon.

March 12, 2011 — Concordia Optimist Annual Machinery sale at Concordia.



BAXTER BLACK

ON THE EDGE OF COMMON SENSE

Three Brothers And A Bull

Jim told me a story of his youth. Of course, it could have happened yesterday knowing cowboys the way I do!

Jim was 12. His brothers were two years off, either way. Their dad sent the boys out a-horseback to bring in Bully Boy, one of their herd sires, to the home corrals. Instructions were to stand off by the water trap until Bully Boy came in. Then make sure they close the trap before any other bulls came in, to avoid a bull fight. The boys had been told many, many, many times to NEVER, NEVER, NEVER get around, beside or between any bulls that were fighting. It was a rule of the range.

Our teenage trio sat at the trap for an hour before they saw Bully Boy coming in with a handful of cows. They arrived without fanfare. The boys could have ridden up and shut the gate easily but... coming out of the brush they saw another bull, a big red one, trudging up the trail to the trap.

"Hold him back!" said the eldest.

"Wouldn't you like to see a bull fight?" asked Jim.

Well, whatever convoluted logic one might use to make it seem okay carried the day! They rode into the trap and pushed Bully Boy out to meet Big Red. It couldn't have been better planned. The two bulls

went right for each other. Allow me to quote,

"Two bulls as big as boulders banged together head to head.
"It sounded like the closing of a vault!
"Tectonic plates colliding, their reverberation spread
"Like tremors from the San Andreas Fault!"

When the boys decided they'd had enough entertainment, Jim whipped on his ol' horse, Tony, and rode right between the bulls screechin' and hollerin'! Red went one way, Bully Boy went the other! Jim stayed after Bully Boy till the bull stopped, turned around, and then charged the horse! Bully Boy hit the horse in the shoulder. The jar knocked Jim off the right side and spooked Tony, who lit out buckin'. Jim was riding an old saddle with a high cantle that tied to the seat at a sharp angle just right to catch his left spur. According to Jim

the right stirrup was swingin' free and he got an arm through it!

From the JPV, Jimbo-Point-of-View, he could see underneath the horse's belly at the buckin', kickin', gallopin' horse's hooves and the big bull hookin' at the horse with his horns. Jim said they were battlin' and buckin' neck and neck until one solid blow caused him to lose his grip on the stirrup. It swung him back with enough force that his home-made saddle-string spur strap broke and launched him out behind like someone throwing a gunny sack full of wild turkeys off the back of a runaway bass boat!

In the aftermath, they were all worried what story they could tell their Dad, till they looked up and there he was! He'd seen the whole thing!

Jim remembered his Dad riding up to him, putting his arm around his shoulder and saying, "Son, if this didn't teach you something, there's nothin' I can say."

10 & 12 Bale Hay Trailers



10 Bale: \$7300

12 Bale: \$9300

- Cradles can be lifted w/one hand
- Cradles are removable
- Safety locks for cradles in both the up & down positions, located at the front of trailer
- 1-Year Mfg. Warranty on axles & tires • 2-Year Warranty on trailer
- Heavy duty tubular construction
- 10-bale trailer has 7,000 lb. tandem axle with brakes
- 12-bale trailer has 10,000 lb. tandem dual axle with brakes
- 16" wheels, 10 ply radial tires • Comes with a spare tire

DENNING
MACHINE SHOP, INC.

Toll-Free: 866-293-5450

THE WORKHORSE OF WESTERN KANSAS



The No-Till Drill of Choice



Industry leading features help growers produce higher yields.

- ◆ Parallel Linkage for BEST Depth Control
- ◆ Exclusive Wobble Slot Single Seed Placement

Seed Handling



Bulk Seed Delivery

- ◆ Available in 240 and 160 bu. capacity

Seed Totes

- ◆ 2 or 4 box

CrustBuster
SPEED KING INC.
Dodge City, Kansas

Call or Click Today

620.227.7106

crustbuster.com



Financing
As Low As 1.99%

Yamaha 2011
New 550 Grizzly
\$6799



2010 Honda FourTrax®
Rancher® (TRX 420TM)
\$3999



2011 Kawasaki 610
Mule 4x4
\$7199



1-800-279-3651 www.hondaofchanute.com

See store for details, dealer retains all rebates.

Some units may be demo models.
All prices include freight and setup. Manufacturer rebates, programs, bonus bucks and incentives have been deducted. Also, we offer NO shipping. Customer must be in our store to take delivery of unit purchased. Discounted prices from MSRP are considered cash prices. Credit cards may not be used to receive cash discounts. Financing is available with approved credit. Every attempt has been made to provide accurate prices as we are not able to always keep current pricing posted on the internet since they are subject to frequent changes both up and down. ALWAYS WEAR A HELMET, EYE PROTECTION AND PROTECTIVE CLOTHING. NEVER RIDE UNDER THE INFLUENCE OF DRUGS OR ALCOHOL, AND NEVER USE THE STREET AS A RACETRACK, OBEY THE LAW, AND READ YOUR OWNER'S MANUAL THOROUGHLY. For rider training information or to locate a rider-training course near you, call the Motorcycle Safety Foundation at 1-800-445-9227. Reinview mirrors are standard equipment. RECOMMENDED ONLY FOR HIGHLY EXPERIENCED RIDERS 18 YEARS AND OLDER. BE A RESPONSIBLE RIDER. REMEMBER, ATVs CAN BE HAZARDOUS TO OPERATE. FOR YOUR SAFETY, ALWAYS WEAR A HELMET, EYE PROTECTION AND PROTECTIVE CLOTHING, AND NEVER RIDE ON PAVED SURFACES OR PUBLIC ROADS. KEEP IN MIND THAT RIDING DOESN'T MIX WITH DRUGS OR ALCOHOL. HONDA RECOMMENDS THAT ALL ATV RIDERS TAKE A TRAINING COURSE AND READ THEIR OWNER'S MANUAL THOROUGHLY. For rider training information or to locate a rider-training course near you, call the ATV Safety Institute at 1-800-387-2887.

See Our Ad In
Names and Numbers
Five Star Rating Business

LOOMIX®

Meeting All Your Supplementation Needs

Loomix® now provides a line of Cooked Molasses and Pressed Tubs.
Get your Liquid & Tub supplementation needs met by contacting your local Loomix® Dealer



Why Feed Loomix® Liquid Feed?

- Signature Supplementation Program Designed to Maximize Forage Utilization
- Loomix® Liquid Feed Products are formulated to provide a highly fortified protein, vitamin and mineral package.
- With Loomix® Liquid Supplements, there is convenience, consumption control, no waste, readily available nutrients, no dust, and improved performance!



Why Feed Loomix® Cooked or Pressed Tubs?

- Fortified with Vitamins and Minerals
- Less Weather Loss
- Reduced Waste and No Mess
- Convenience; your complete supplement in a 200 lb tub.

TallGrass Loomix®

Tom Taphorn
Manhattan, KS
785-565-8657

Chad Hurla
Maple Hill, KS
785-221-5515

Wes Cahoon
Cottonwood Falls, KS
620-344-1312

TopCo Distributing Co.

Chris Fritz - Sales
Salina, KS
785-577-6133

Ox-Bar Feeds

Kent Ochsner
Baldwin City, KS
785-840-8243

Matt Isch
Gridley, KS
785-207-0200

Galen Yoder
Garnett, KS
785-448-3227

John Sherman
Paola, KS
913-259-0002

Zach Edgerton
Kincaid, KS
620-215-2620

WildCat Feeds

Mike Hurla
Topeka, KS
785-232-7373

Hedke Ag Co.

Scott Hedke
Waterville, KS
785-363-2777

Kaiser Feeds

David Kaiser
Lincolnton, KS
785-479-1338

