

Since 1954

GRASS & GRAIN

Published by **AG PRESS**

55th Year

No. 34

October 20, 2009

\$1.00



Pumpkin patch gives area youth a national opportunity

By **Beth Gaines-Riffel**,
Editor

In the classic children's cartoon, "Charlie Brown and the Great Pumpkin," according to Linus, on Halloween night, the Great Pumpkin rises out of the pumpkin patch he deems the most "sincere." If that was the case, he might want to give the one carefully tended by Hannah Miller and her family serious consideration. Located just east of Enterprise, - acre patch contains 30 different varieties of pumpkins and gourds that would make any autumn decorating enthusiast giddy with excitement, not to mention the little set go wild running through the patch searching for the pumpkin that they want to claim for their own. You can find big and little pumpkins, round or misshapen ones. Some traditional orange — others white and even shades of bluish-green.

Hannah, the daughter of Joe and Anita Miller, will be recognized at the end of the month during the National FFA Convention as one of four finalists for the award recognizing vegetable production.

Miller didn't necessarily start out her high school FFA career with the hopes of going down the pumpkin road.

"I always kind of thought

my SAE would be animal related," she explained. FFA students are encouraged to start their own businesses or work for those involved in some aspect of agriculture. These programs are known as the student's Supervised Agriculture Experience and require students to log a specific number of hours and invest in and grow their businesses. While the pumpkin patch didn't initially start out to be Hannah's priority, through the years it has grown and developed — just as the young woman has.

Miller explained that just like any other traditional crop, it must be properly cared for, weeds managed and insect infestations controlled by using proven techniques and applying approved chemicals in a safe and timely matter. It takes a lot of hours of work from the entire family — including younger brother Drew.

Hannah explained that in the years that the family has been planting pumpkins, they have developed a sense of what types of pumpkins are popular with their customers. They then order those varieties of seeds in bulk each spring.

According to Anita, the patch is a low-budget operation, so instead of being able to start seeds early in a greenhouse, they plant directly into the soil.

Because of variations in the length of the growing season between the giant-type pumpkins which require 120-130 days to fully mature and the smaller decorative types which take as few as 80 days, the family tries to plant in two different stages.

A pumpkin patch of this size also takes a lot of manpower to maintain through the growing season — more than the family of four can provide while balancing their other farm chores.

The Millers, who also are active in the Detroit Ramblers 4-H club, developed a win-win strategy to get some help with the patch and boost the 4-H club's treasury.

Anita Miller noted that the club is paid for the hours the members help work in the patch planting, weeding and in October harvesting and helping customers find and pick pumpkins and gourds.

"The 4-H club has used the funds to provide scholarships and to send kids to 4-H camp," Anita Miller explained. "The kids have a lot of fun with it, some are out here every week."

While the patch yields a nice boost for the club's treasury, the Millers are quick to point out that they aren't going to become wealthy with the project.

"Our main goal is to edu-



The Miller family from Enterprise — Hannah, Joe, Anita and Drew — enjoying the opportunity to visit with customers about their fall crop. Hannah is national FFA proficiency award finalist for her work in the field of vegetable production. The final award announcement will be made during the National FFA convention in Indianapolis at the end of the month.

cate others," Anita said about the patch. "We can share information about production agriculture and farmers in a very fun setting. That's what we want to accomplish."

Hannah notes that the patch is open each Sunday afternoon from 2-5 p.m. to allow families to come to the farm to pick out their pumpkins. She noted that setting prices each year is challenging. "We try to set them

below what the grocery stores are charging," she said.

Anita added that they've had a couple of wholesale orders come in which helps increase the total tonnage sold from the patch. She also added that they have a customer that purchases a pumpkin for each child in Enterprise.

Although Hannah's help with the patch will probably become more limited as she

is now a freshman in college and is serving as the Kansas State FFA treasurer this year, the family intends to keep the patch going.

Pointing to a building that once was a farrowing house, she noted that it would be the perfect structure for a petting zoo. "Maybe someday," she said with a smile, before returning to help a family hoist their pumpkin finds onto the scale for her to weigh.

Ethanol burn provides demonstration of firefighting options

By **Cindy Baldwin**

Observers welcomed the blast of heat from four controlled ethanol burns at the Kansas Ethanol plant near Sterling Oct. 9. The unseasonal frigid weather decreased slightly the anticipated attendance, but didn't cool the interest of the nearly 300 people who gathered at the plant to observe the effects of different types of

foam on ethanol fires. The event was the first in the region, possibly the country, which allowed firefighters to observe the effectiveness of various types of foam in fighting ethanol fires in side-by-side, hands-on demonstrations.

Representatives from 31 fire departments attended the event, which was originally organized as a training exercise for Rice County firefighters, according to Jennifer Dellar, plant safety and purchasing officer for Kansas Ethanol, located between Sterling and Lyons. Word of the event spread quickly among fire departments, ethanol plants and emergency preparedness de-

partments and requests came in for the training to be opened up to others. Plant officials extended the invitation, and those attending came from not only every region of Kansas but also included representatives of fire departments, hazmat teams, emergency medical services, ethanol plants and railroad safety officials from Oklahoma, Nebraska, Missouri, Texas, Ohio, Michigan, Iowa and Virginia. Also involved was the Kansas Highway Patrol, which brought a helicopter equipped with a camera capable of sending real-time pictures of the burn to a receiver on the ground — the first time the technology had been used.



Rice County firefighters prepare to put out a small ethanol burn.



Kansas Ethanol LLC hosted a firefighter training at their facility in Lyons. Ethanol burns poses special challenges as water is not an effective extinguisher for the fuel.

The recent increase in ethanol production and transportation of the product presents new challenges for firefighters as foams developed to fight gasoline or diesel fires are not as effective on alcohol-based ethanol fires, requiring different fire-smothering products and attack techniques, Dellar said. Ethanol poses an additional challenge in that it burns so clean that it is rare

to actually see a flame with an ethanol fire — the shimmer of heat above the burn area may be the only indication a fire has ignited. The demonstration burns did show flame as the ethanol used contained a two-percent gasoline mix, the same percentage mix that is shipped from the plant, Dellar said. Each burn used 600 gallons of fuel dumped into a containment area ringed

with metal sheeting bermed with soil. The gasoline quickly burned off, however, leaving the alcohol burning and even reigniting if the foam blanket smothering the flame was breached by a fire hose or other equipment. In addition to observing the controlled burns — each of which was fought with a different product or mix of

Continued on page 3



Over the Barn Gate

By Beth Gaines-Riffel

This is the time of year that mystifies me. We can go from warmish days that need little more than a light jacket one day — to wanting layers of Carhartts and gloves the next. It's also the latter that makes me want to nestle down deeper under the quilts my grandmother and great uncle stitched and enjoy a good book or a few more minutes of sleep! Sadly it is also this time of year that finds my to-do list entirely too long as the need to prepare for the impending winter looms ever closer. From putting away the summer gear, sealing up windows, setting mouse traps and taking down the remains of the garden are all little details that must be attended to between the fall harvest and bringing home calves and cows from the native grass pastures.

There simply isn't much time for rest. However, because of the splendor of the season — and the beauty found in the changing leaves and the brightly colored pumpkins and gourds found in area pumpkin patches, one can't help but take a little time out to soak up the sights.

A couple of Sundays ago the family tagged along with me as I visited with the Miller family of Enterprise and their pumpkin patch. It was a beautiful bright fall day. There were families wandering amongst the vines, seeking out that perfect pumpkin to grace their house. And if you've ever doubted that beauty is in the eyes of the beholder, you need to spend some time at a pumpkin patch. What one person declares the perfect pumpkin, another will pass right by looking for another that strikes their fancy.

The kittens were stretched out on hay bales, enjoying the attention and the petting that some of the farm visitors were giving them. 4-H members were scattered out across the field and were busy snipping, loading and weighing up customers' treasured finds. All said, it was a nearly perfect day.

When you analyze the situation a little further, it became clear to me that this type of agriculture enterprise was just as important as the fields of wheat that

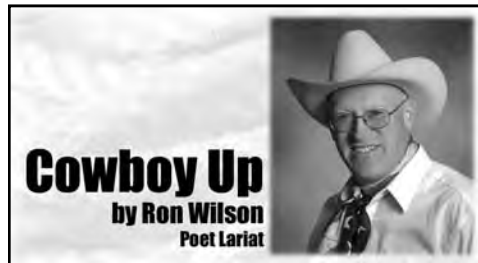
when sent through the channels of commerce would be converted to flour and eventually to bread which could in theory feed the world. Instead of filling the stomach, it filled the soul with good family memories, and the mind of urban customers about the role of agriculture and its importance.

For the Millers, it was even more than telling the farm story. The patch gave them an opportunity to educate their daughter — teaching skills about business planning, customer service, advertising and failures when weed, insect or weather failures occur. As an FFA member she learned to keep records and document her successes as well as her failures. And because of that experience,

she will be recognized at the National FFA convention as a national proficiency award finalist.

Personally, I'm crossing my fingers for her and hoping for the best.

At the end of the day, whatever businesses we choose to pursue, most don't look for lucrative returns — only enough to make a comfortable life and to reap the rewards of a life well-lived through family and friends. It has been noted that the seasons serve as a metaphor of life — and the autumn is a time for the harvest. I hope that you enjoy this season — and your harvest is plentiful. Just a few things to think about this week. I'll chat with you next week, "Over the Barn Gate!"



Cowboy Boots and Kansas

"These Boots are Made for Walkin'" was a hit song for Nancy Sinatra back in the 1960s. But in the everyday life of the cowboy, it wasn't necessarily so. Cowboy boots were not made for walkin'. So what were they made for? And for that matter, who made 'em? The story of how, when, and where the cowboy boot was created is an interesting but little known nugget of history. As with other things relating to the American Cowboy, right at the front and center of this story is the great State of Kansas.

Many guys take our footwear for granted. We buy some shoes or boots and then move on to something more interesting. But I imagine people have been wrestling with what to do with footwear, ever since the first caveman wrapped an animal hide around his feet. (Do you suppose the caveman's wife had forty pairs of different colored animal hides stuffed back in the closet? And imagine the talk around the cooking fire: Hey, did you hear there's a twenty percent off hide sale down at Dullards?...)

Shoes were probably invented as a functional item for the feet, but a rider on horseback needed something more:

Boots. He needed protection and support above the ankle, and so riding boots have been used for centuries. Genghis Khan was said to have a very fancy pair of boots. Spanish vaqueros brought their style of boots to Mexico, dating back to the 1500s.

In the United States after the Civil War, government-issue boots may have been the only footwear owned by former soldiers as they came west. Some were similar to the Hessian boot, used by European cavalrymen in the 18th century, with a v-cut on the top. The Wellington boot was another popular style, named for the First Duke of Wellington who defeated that guy Napoleon at Waterloo. Wellington boots are calf-length with a low heel.

But for drovers bringing longhorn cattle north and spending countless hours in the saddle, those boots were not ideal. (This is where Kansas takes its place at the forefront of cowboy boot history.) In the 1870s, a new style of boot emerged called the Coffeyville. It was a hybrid of military and plains type boots. It took its name from Coffeyville, Kansas, the hometown of bootmaker John Cubine, who created it. The Coffeyville boot has been described as the precursor of the modern cowboy boot.

So who invented the actual cowboy boot? That's a story for another day. Suffice it to say that the inventor was in the Sunflower State, and that he built a boot which was very functional for the plains cowboy and range rider of his day.

Unlike Nancy Sinatra's, these cowboy boots were made for workin' and ridin', and definitely not for walkin'!

Building Boots

By Ron Wilson, Poet Lariat

Many things have been invented and not all have taken root,
But one of the great inventions was the simple cowboy boot.

The cowboy boot is somethin' that won't cross most people's minds.

They think it's just a footwear style, like all the other kinds.

But cowboy boots are special cause they're made a certain way,

And that is what I want to explain to you today.

The first cowboy boots were made after 1865

To be used by the drovers on their northern cattle drives.

They were made out of cowhide, which is what they had on hand.

And these boots were shaped to suit the cowboy's work demands.

They were made heavy duty so they're good for every season,

And every feature of the boot is for a certain reason.

For example, why do cowboy boots have round or pointed toes?

To get in and out of stirrups fast and easy when a horse goes.

The heels were angled sharply so they'd dig into the ground

When a cowboy ropes a calf and it tries

to run around.

Of course, the boots were made of good old cowhide leather

To protect the feet and legs, and warm 'em in cold weather.

The uppers of the boot protect the lower leg, you see,

From a snakebite or a sticker from a thorny locust tree.

The stitching on the leather isn't just for the design,

But it helps stiffen the leather for protection sure and fine.

So you see, there is a reason for the way the boot is made

But if we don't remember, then that history will fade.

The styles of boots have changed with time, as fashions ebb and flow,

But that's the reason for the first design those years ago.

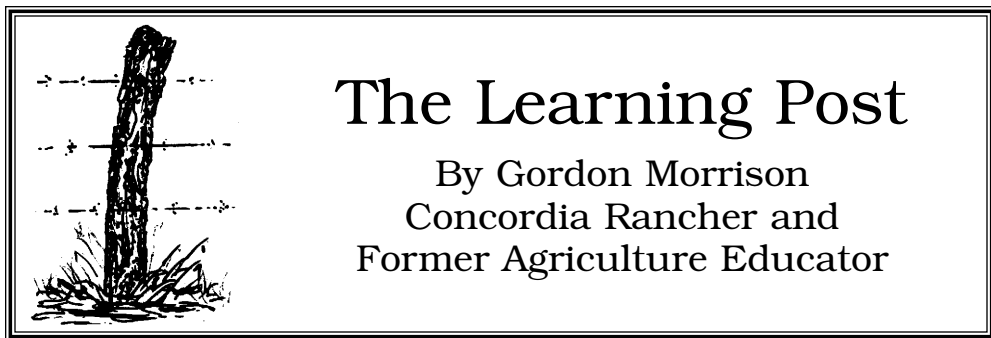
The modern cowboy still wears boots. He likes the wear and feel,

But his town boots may have roper toes and a lower walkin' heel.

So lets celebrate this element of our western cowboy roots And thank those first designers of the early cowboy boots.

And one more thing - Another benefit most people never catch:

When I wear boots, no one will know my socks don't have to match.



The Worn Bolt

The old F-20 Farmall tractor with its steel lug wheels has always been a fascination to me, for it is the first tractor I learned to drive. While my dad still farmed with horses, our neighbor worked his fields with this F-20 tractor. When I was 12 or 13, he let me begin driving his tractor, which was a challenging thrill for me. The original seat had been replaced with one that was bolted onto a flat metal plate that extended directly behind the steering wheel. A metal spring helped to lessen the jolting somewhat to allow the operator more comfort. This seating apparatus was held together by one machine bolt.

When I stopped by my neighbor's place as an adult several years later, he was disking his wheat ground with the same tractor. As I was visiting with him, I noticed that the bolt that held the seating attachment was almost worn in two. It was obvious that if this bolt were to give way, the seat would drop to the ground, throwing the operator directly in front of the disk to be run over by it. I pointed out this hazard to him but to no avail. He was the type of person who fixed things after they broke or were completely worn out. He just never got into a rush to do things. I felt sure he did not plan to stop his disking to replace a badly worn bolt that his life was dependent upon. Even so, he was a very good farmer who in his time did things right.

In thinking about the bolt that was almost worn in two, I have observed that breakdowns happen more frequently after wear has occurred. The greater the amount of wear, the more often and serious are the breakdowns. My vehicles are almost trouble-free for the first 100,000 miles. It is during the next 100,000 miles, after much wear has taken place, that breakdowns occur and repairs are frequently needed. The first 40 years of my life were

pretty trouble-free health wise; then after 40, I soon needed glasses. Old age and the ailments that sometimes accompany it seemed to move in faster and faster.

Some historians say that the average age of the world's greatest civilizations is around two hundred years. Our country's independence was declared in 1776, making it 233 years old. For years our nation has been the leader of the free world — a superpower that could overwhelm any other nation militarily and that has been quick to respond to any other nation in dire need of help. We have been a people who have fought wars to overcome the tyrannies of the world. We have been a great people, a great country. Could we now be in the latter part of our existence as a nation? Are we like a bolt that is nearly worn in two, which when it breaks, will have a mighty fall that will bring death to the life as we have known it for many decades?

It has been noted that there are eight stages through which these civilizations have progressed and in the following sequence:

From bondage to spiritual faith;
From spiritual faith to great courage;
From courage to liberty;
From liberty to abundance;
From abundance to complacency;
From complacency to apathy;
From apathy to dependence;
From dependence back into bondage.*

In which of these stages is our U.S.A. now? Are we moving from apathy to dependence? If so, will the next stage take us back into bondage? Our bolt is quite worn; there is very little metal left. Things could happen very rapidly in the latter stages; and when the bolt finally breaks, the fall could be fatal. Is it too late to replace the bolt?

*The Late Great United States (Multnomah Books: Colorado Springs, CO 2009), Mark Hitchcock.

GRASS & GRAIN (USPS 937-880)

The newsweekly for Kansas and southern Nebraska, published each Tuesday at 1531 Yuma (Box 1009), Manhattan, KS by Ag Press, Inc. Periodicals postage paid at Manhattan, Kansas. Postmaster send address changes to: Ag Press, Box 1009, Manhattan, KS 66505.

Subscription — \$77 for 2 years. \$42 for 1 year, includes sales tax. Outside Kansas, \$49 for 1 year, \$91 for 2 years.

MEMBER OF Associated Press

www.grassandgrain.com

785-539-7558
Fax 785-539-2679

Editor — Beth J. Gaines-Riffel
gandgeditor@agpress.com

— Advertising Staff —
Steve Reichert Dennis Katzenmeier
agpress2@agpress.com
ggnewspaper@gmail.com

Ethanol training addresses fire

Continued from page 1

products — firefighters were able to attend seminar sessions on alcohol resistant foam and F-500 foam given by Dave Dunagan, Hutchinson Community College Fire Science instructor, and Stan Tarnowski, Hazard Control Technologies, and visit with vendors.

"We have had nothing but positive feedback from the firefighters who were here," Dellar said after the demonstration. "They thanked us for having an opportunity to actually see how the products and equipment worked on a fire with some size. Those who had seen other demonstrations had only observed pan burns, which

are nothing like a real fire. We've been asked to do this on an annual basis."

Randall Kaufman, a member of the nearby Windom, Volunteer Fire Department, watched the burn demonstrations with interest. He speculated that if there was a plant fire at Kansas Ethanol, his department would likely be called in for mutual aid. Even without that possibility, he said, the number of transports rolling through his fire department's district each day made it necessary for the small, rural fire department to have knowledge of appropriate response techniques for an ethanol fire. "We do have foam on hand for a fuel fire and the equipment to admin-

ister it," Kaufman said, "but, we don't have the type of foam we would need for an ethanol fire. I expect we will be getting some to have on hand." Most of the firefighters attending the demonstration were in the same position as the Windom department. There might not be an ethanol plant in their area, but the increasing number of transports carrying the fuel and the increasing number of tank farms and gas stations carrying ethanol blend means that fire departments and emergency preparedness units need to be familiar with its burn properties.

The opportunity to see side-by-side burns was what brought Oklahoma City firefighter and hazmat team leader Major Clint Greenwood to the demonstration. Attending with him were firefighters from the Chickasaw, Norman and Moore fire departments. Greenwood

and his fellow firefighters are all part of the hazmat training team for the state of Oklahoma. "We were thinking about doing something similar for our firefighters in Oklahoma and, when we heard about this, we thought why reinvent the wheel," Greenwood said. John Carpenter, Chickasaw, Okla., said the opportunity to see different foams in action on ethanol fires and the seminar presentations were the draw for him. "This will give us a better knowledge of foams suitable for ethanol fires," Carpenter said. "The foams we are using now don't work on this type of fire."

Hoisington Volunteer Fire Department Chief Jim Sekavec welcomed the opportunity to gain more information about alcohol resistant foams. The only representative in attendance from his department, he braved the bone-chilling temperatures

to watch the burns before heading inside to the seminar sessions. This was the first time he had seen the alcohol-resistant foams used on a fire. He also cited the increasing transport traffic through his community as a reason to learn all he could about fighting alcohol-based fires. A fuel tanker had rolled

and burned several years ago in the community, so he understood first-hand the potential danger.

"If our budget permits, I expect we will get some (of the new foams) to have on hand," Sekavec said. "You hope you never need it, but when you do, you have to be ready."



Firefighters from around the region, including these from Norman, Oklahoma, came to Lyons for the training in fighting ethanol burns.

ELECTRIC POWER STEERING

ONCE AGAIN BRAINS BEATS BRAWN

FOURTRAX® FOREMAN® 4x4 ES with EPS

Coffey County Honda
105 South Main, New Strawn, KS 66839
1-800-279-3650



honda.com UTILITY ATVs ARE RECOMMENDED ONLY FOR RIDERS 16 YEARS OF AGE AND OLDER. ATs CAN BE HAZARDOUS TO OPERATE. FOR YOUR SAFETY BE RESPONSIBLE. READ OWNERS MANUAL. ALWAYS WEAR A HELMET, EYE PROTECTION & PROTECTIVE CLOTHING. BE CAREFUL ON DIFFICULT TERRAIN. ALL ATV RIDERS SHOULD TAKE A TRAINING COURSE. FREE FOR NEW BUYERS. ASK YOUR DEALER OR CALL ASI AT 800-887-2887. NEVER RIDE UNDER THE INFLUENCE OF DRUGS OR ALCOHOL. ON PAVED SURFACES, ON PUBLIC ROADS, WITH PASSENGERS, AT EXCESSIVE SPEEDS, NO STUNT RIDING. RESPECT THE ENVIRONMENT WHEN RIDING. FourTrax® Foreman® and Best on Earth® are registered trademarks of Honda Motor Co., Ltd. (3/03) 08-0358

GLENER R5 SERIES COMBINES

AN ENDURING TRADITION THAT ALWAYS GETS BETTER.

AGCO GLEANER R5 Series rotary combines — featuring Models R65 and R75 — are the newest generation of GLEANER innovation.

For decades, farmers have counted on GLEANER for clean harvesting, innovative designs and efficient operation. The latest generation of GLEANERs continues the tradition with:

- Factory-installed CDF™ (Controlled Dynamic Flow) rotor for better grain quality, less horsepower in today's tough crop conditions
- New four-strand feeder chain for better crop flow
- Console II combine control & Fieldstar II yield monitoring — standard
- GLEANER-exclusive distribution augers & accelerator rolls make R5 Series GLEANER combines the least slope sensitive combines on the market today.

Efficiency. Quality. Reliability. Performance. To find out why thousands of farmers remain loyal — generation after generation — stop in now to see today's generation of AGCO GLEANER.

EMPORIA
Schaefer Equipment
620-342-3172

KALVESTA
Kalvesta Implement
620-855-3567

LAWRENCE
Shuck Implement
800-654-5191

AGCO GLEANER

FIELDSTAR II

Homeland Insulation
Spray Foam Specialist
Travis Turner
homelandinsulation@yahoo.com
Lower Your Utility Bill
"Guaranteed"
Metal Buildings
Commercial Buildings
New & Existing Residential
913-449-9579
33013 West 89th St.
Desoto, KS

Energy Star INSULATION

"R.J." Black STANDING MAMMOTH

WORMAN'S HARNESS SHOP
Chaps & Chinks
Mule Saddles
Custom Harness
Repair Harness & Saddles
M.E. (Jack) Worman
525 N. Kipp Rd.
Salina, Kansas 67401
785-823-8402

It only takes one ride in our new cab to see what you've been missing.

Don't miss anything in our panoramic cab that is 28% larger. Learn more at www.LongLivetheFamilyFarm.com

AGCO TRACTORS

LDI
Lang Diesel Inc.
15 North Old Hwy 75
Sabetha, KS 66534
www.langdieselinc.com

Please join us for our
Fall Tillage Days
Wednesday, October 28th, 2009
10:00 a.m. - 3:00 p.m. Come and Go
Bob Scoby's Farm
From Sabetha: 4 Miles South on Old Hwy 75, 1/2 Mile East on Hwy 36
Call Clinton at 785-547-7211 for more information!

PROUD PROGRESSIVE PROVEN

Barton County Feeders, Inc.

"We want to earn the privilege to be your feedyard of choice."

1164 SE 40 Road • Ellinwood, KS 67526 • 620-564-2200
Cap Proffitt, Manager • www.bartoncountyfeeders.com

Winner Sandy Hill, Eskridge: “Serve with milk.”
APPLE PIE WEDGES

Preheat oven to 400 degrees. Spray a baking sheet

FIND WHAT YOU WANT AND NEED IN

Since 1954

GRASS & GRAIN

Published by AG PRESS

PRINT SUBSCRIPTION

- ☐ 3 Years **\$101⁰⁰**
- ☐ 2 Years **\$75⁰⁰**
- ☐ 1 Year **\$41⁰⁰**

The above rates are for Kansas, western Missouri, and southern Nebraska (zip codes beginning with 640 through 645 and 660 through 689).

OUTSIDE AREA

- ☐ 3 Years **\$122⁰⁰**
- ☐ 2 Years **\$89⁰⁰**
- ☐ 1 Year **\$48⁰⁰**

ADD ONLINE TO YOUR PRINT SUBSCRIPTION FOR \$2 A MONTH

- ☐ 1 Year **\$24⁰⁰**
- ☐ 2 Years **\$48⁰⁰**
- ☐ 3 Years **\$72⁰⁰**

Call Toll-Free:

877-537-3816

or

785-539-7558







Subscribe online: grassandgrain.com

MAIL TO *(please print):*

Name: _____

Address: _____

GRASS & GRAIN • BOX 1009 • MANHATTAN, KS 66505

Lynn Burgess, Lyons:
STICKY TOFFEE CAKE
 8-ounce package pitted dates
 18.25-ounce box yellow cake mix
 6-oz. container vanilla yogurt
 1/3 cup vegetable oil
 3 large eggs
 20-ounce squeeze bottle caramel flavored sundae syrup (such as Smucker's)
 2 tablespoons heavy cream
 1 quart high quality vanilla ice cream
 12 mint sprigs for garnish, optional

Heat oven to 350 degrees. Coat a 9-by-13-by-2-inch baking pan with nonstick cooking spray. Place dates and 1 1/4 cups water in a large bowl and loosely cover with plastic wrap. Microwave on high for 4 minutes. Let cool slightly; transfer to blender or food processor and blend until

smooth; set aside. In a large bowl combine cake mix, yogurt, oil and eggs. Beat on medium high speed for 2 minutes. Add date puree; beat to combine. Pour into prepared pan. Bake at 350 degrees for 37 minutes or until toothpick inserted in center comes out clean. Remove to rack and cool. While cake is baking stir together the caramel mixture over baked cake, spreading to edges as it cooks in the pan. Cool cake 20 minutes. Pour remaining sauce back into squeeze bottle. For each serving, drizzle caramel sauce on a plate. Place slice of cake on plate with a scoop of ice cream. Garnish with mint, if desired. Makes 12 servings.

Prep time: 15 minutes.
 Per serving: 537 calories, 19 g of fat, 84 g carbohydrate,

103 mg cholesterol.

Millie Conger, Tecumseh:
SALTED PEANUT CHEWS
 1 1/2 cups flour
 2/3 cup brown sugar
 1/2 teaspoon baking powder
 1/2 teaspoon salt
 1/4 teaspoon baking soda
 1/2 cup butter
 1 teaspoon vanilla
 2 egg yolks
 3 cups miniature marshmallows

Topping:
 1/2 cup corn syrup
 1/4 cup butter
 2 teaspoons vanilla
 10-ounce bag peanut butter chips (1 2/3 cup)
 2 cups crisp rice cereal
 2 cups salted peanuts

Heat oven to 350 degrees. In a large bowl beat flour, brown sugar, baking powder, salt, baking soda, butter,

vanilla and egg yolks with mixer until crumbly. Press firmly into bottom of ungreased 9-by-13-inch pan. Bake 12 to 15 minutes or until light golden brown. Immediately sprinkle marshmallows evenly over base and bake 1 to 2 minutes longer until marshmallows just begin to puff. Cool while making topping. In a pan mix all topping ingredients except cereal and peanuts. Heat over low heat stirring constantly just until chips are melted and mixture is smooth. Remove from heat. Stir in cereal and peanuts. Immediately spoon warm topping over marshmallows and spread to cover. Refrigerate until firm, about 45 minutes. For bars, cut into 6 rows by 6 rows.

Witches Brew



This is a recipe which has been printed in the Grass & Grain before but is worth reprinting at this time of the year. Enjoy!

WITCHES BREW

1 cup blood drops (red hot)
 1 cup chicken toenails (candy corn)
 1 cup cat claws (sunflower seeds)
 1 cup lizard gizzards (shoestring potatoes)
 1 cup bat bones (straight pretzels)
 1 cup ghost noses (small marshmallows)
 1 cup owl eyes (peanuts)
 1 cup colored flies (M&M's)
 1 cup dead ants (raisins)



Mix all together and store in a closed container.

KROGMANN BALE BEDS



* 12 gpm engine driven hydraulics or electric models
 * Ask our customers about Krogmann dependability, durability and our 3 year warranty
 * Options available: across the bed toolboxes, side toolboxes, carry-alls, 3rd spool valve, cake feeders and posthole diggers

— CALL FOR A DEALER NEAR YOU —
KROGMANN MFG.

Sabetha, KS • Toll Free **1-877-745-3783**
www.krogmannmfg.com

THE RUSH IS ON.

POLARIS
THE WORLD'S TOUGHEST ATV

OUTFIT YOUR RANGER AND RANGER RZR WITH PURE ACCESSORIES.

POLARIS
THE WORLD'S TOUGHEST ATV

POLARIS SEASON TO RIDE SALES EVENT

Polaris Rangers are not intended for on-road use. Drivers must be at least 16 years old, with a valid driver's license to operate. Passengers must be at least five years old.

DUFFER'S
Repair & Supply
BERN, KANSAS
785-336-3901

FLINT HILLS POWERSPORTS
7985 E. Hwy. 24, MANHATTAN, KS
785-539-6500

www.duffersrepair.com



Wick Buildings can customize design your building to meet your needs and expectations. Whether it be a recreational vehicles or farm equipment, Wick has a building that's just right for you.

D.J. CARPENTER BUILDING SYSTEMS



405 Walter Road - Mazomanie, WI 53560
 1-800-356-9682 - www.WickBuildings.com

709 B PECAN CIRCLE
 MANHATTAN, KS 66502
(785) 537-9789

408 CIRCLE ROAD
 SILVER LAKE, KS 66539
(785) 582-0530

Authorized Wick Builder

www.carpenterbuildings.com

Back Pain & the DRX9000™



Common Causes of Back Pain

- The discs in your spine act as shock absorbers. Herniation or "bulging" of the discs may occur due to wear and tear. This is one of the most common causes of lower back pain.
- Disc degeneration can occur when the spongy disc dries out. over time or with injury, discs may dry out, tear and put pressure on the nerves. The result is muscle tension and back pain.

"The DRX9000™ is designed to relieve pain and promote healing."

Non-Invasive. Non-Surgical.

With the DRX9000™, You Can Take Hold of Your Life Again!

- Reduce your back pain.
- Reduce your symptoms.
- Reduce your disability.
- Improve your quality of life

About the DRX9000™

- The DRX9000™ is effective in treating low back pain associated with herniated discs, bulging discs and degenerative disc disease, allowing patients to return to an active lifestyle.

Treatments on the DRX9000™

- Consists of 20 sessions over a period of six weeks.
- Each session lasts 30 minutes.
- Following each therapy session, a cold pack and/or electrical stimulation is applied to help restore muscle tone.

Now Accepting Blue Cross -Blue Shield

Dr. Scott D. Iversen
 630 Poyntz • Manhattan, KS
Call Today! 785-776-7568

Ladies Nite 5

Attention Junior Beef Exhibitors!!

HALTER BROKE Heifers & Steers with competitive futures!

Saturday • November 7, 2009 • 1 PM

Hosted by Bittersweet West
 1793 US Hwy 73, Hiawatha, KS (5 miles south of Hiawatha)

*Salers • Salers Cross
 Angus • Shorthorn
 Maine Anjou*

To receive a complimentary catalog, please contact:

J.R. Adcock, Sale Manager
 1793 US Hwy 73 • Hiawatha, KS 66434
 Ph/Fax (785) 547-3481
 Mobile (785) 547-6781
bittersweetwest@rainbowtel.net

BUTLER COUNTY REAL ESTATE AUCTION

SATURDAY, OCTOBER 24 — 10:00 AM

16929 SW 210TH STREET — ROSE HILL, KS 67133
 DIRECTIONS: From Rose Hill Road and 210th (old 95th) go west 7/8 of a mile to the AUCTION!!

OPEN HOUSE: Monday, October 19th 5-7 PM

REAL ESTATE: Sells at 12:00 NOON!!!

NOTE: This great auction includes 12.5 acres, (4) bedroom home, (2) newer outbuildings, 18 tractors (mostly antique), lots of shop tools, vehicle, a few antiques, furniture and a little bit of everything.

FEATURES OF THIS HOME INCLUDE: 4 bedroom, 3 bath, ranch style, built in 1998 with approximately 3,152 sq. feet.

APPLIANCES, FURNITURE, VEHICLE, ANTIQUES, TRACTORS, TRAILERS, MISCELLANEOUS EQUIPMENT, NEW TOOLS, TOOLS, METAL LATHE, MISC. HOUSEHOLD ITEMS, LAWN ITEMS, SHOP EQUIPMENT, NEW OIL AND FLUIDS, MISCELLANEOUS ITEMS

See last week's Grass & Grain for complete listing & pictures

SELLERS: DEAN & BETTE PIPER

SWENSON

REAL ESTATE & AUCTION SERVICE INC.
www.swensonauktion.com

316-776-1302 • 106 N. Rose Hill Rd.

P.O. Box 441, Rose Hill, KS 67133

Diana Swenson, Broker/Owner

Conrad Swenson - Auctioneer

Don Howell - Sales Assoc/Auctioneer

Greg Farber - Sales Assoc/Auctioneer

Rex Childs - Auctioneer • Jeff Burbach - Set Up Foreman



FARMING IS A GAMBLE...

Let BERN SEED Increase Your Odds of Winning!

***Custom Air Seeding (Wheat)**

Certified Wheat Varieties (50# bags, 2000# MB & Bulk) available are...

2137, 2145, Art, Fuller, Hawken, Karl 92, Postrock, Santa Fe. Registered Karl 92

Call Or Visit Us Today!

785-336-3046

**505 Railroad Street
 Bern KS 66408**

OCTOBER & NOVEMBER 3-10-17 "Our Daily Bread" Recipe Contest Prize Scoop & Release Cookie Scoop

- No more fighting for the biggest cookie.
- Simply scoop up the dough, then put it on the cookie sheet by squeezing the handles together.
- The attached scraper pushes the dough off the spoon without your fingers ever touching it.
- Also works with biscuit dough and is handy for candy making.



The winner each week is selected from the recipes printed.

Send us your favorite recipe. It may be a main dish, leftover, salad, side dish, dessert, or what-have-you.
 1. Check your recipe carefully to make certain all ingredients are accurate and instructions are clear.

2. Be sure your name, address and phone number are on the entry. Please include a street address with your recipe entries. A post office box number is not sufficient for prize delivery. Allow 3-4 weeks for delivery.
 3. Send it to: Woman's Page Editor, Grass & Grain, Box 1009, Manhattan, KS 66505.
 OR e-mail at: aggress2@aggress.com

Homeground & Other Geographies by Tom Parker

Bringing in the sheaves

Maybe it was the close proximity to the cornfield, or that for weeks I'd watched harvesters gleaming fields of milo, soybeans and corn. Or it might have been something as simple as timing. Whatever the reason, I was surprised to find myself humming the chorus of an old gospel tune while grilling green chiles.

Now, humming gospel songs isn't something I normally do. Grilling chiles, on the other hand, is an annual affair. Every fall, starting in late September, I can be

found heaping chiles onto the grill until their skins blister and pop. It's all part of stocking up for the year, much as some people can tomatoes and green beans. We do that, too, only this feeds my quintessential New Mexican addiction to capsicum. I try to have on hand around three bushels of chile, though right now I'd say I have about twice that much in the freezer. It was a good year.

It was also a good day to roast chiles. The hillsides were burnished into a thou-

sand shades of yellow, leaves drifted languidly to the ground and the sky above an autumnal shade of deepest turquoise. Smoke wafting off the grill was pungent and smelled like New Mexico in early fall, when every other street corner sprouts a roadside

stand and a chile roaster. As chile roasters are somewhat a rarity in rural Kansas, I was doing it myself, but it was part of the process I enjoyed. It was the consummate act of self-sufficiency, and it smelled good, too.

While flipping the green and red pods, I watched our wild neighbor, Hairy Houdini, as he went about gathering walnuts and secreting them hither and yon throughout the yard. I like to think he remembers where each nut is squirreled away but suspect his memory is no better than mine. Right now I'm long

past recalling how many bell peppers I'd diced up but would hazard a guess of about three dozen. Maybe more, maybe a little less. Enough, at any rate, to make a nice cache in our freezers. He and I were alike in our ancient task of storing up for the winter, I thought. We were bringing in the sheaves.

And then it started. First a hum-da-dum-da-dum, and then a hmmm-hm-hmm-hmmm, my head moving to the beat while my mind scrambled for words it had long forgotten, hum-da-

dumdum and a picture forming of stacks of corn stalks tied together and a sudden click of recognition followed by snatches from the chorus. Altogether a curious turn of events, and one that left me puzzled.

The song was familiar from my days at a fledgling Independent Baptist. While I can't remember if it was a seasonal tune for our small congregation, I do recall wondering just what the heck sheaves were. I knew it had something to do with agriculture, and that sheaves were a metaphor

AUCTION

FRIDAY, OCTOBER 30 — 10:00 AM

388 E. Central — EL DORADO, KS

VEHICLES

1955 Ford van; 1968 step van; 1974 Cortez motor home, cen. roof air, 147,000 miles.

TRAILERS

1990 metal concession trailer; 1990 tram/trailer; 1990 metal utility trailer, fully enclosed, ramp door; 1990 Souvenir trailer, single axle; 1990 cooker/trailer, LP and charcoal; 1990 Dayton flatbed trailer, 8x20 stage; 6x18 dual axle trailer; small concession trailer, single axle; trailer for golf cart; boat float and trailer; misc. trailers.

TRACTORS

John Deere tractor 750, 573

hours, diesel; Allis Chalmers garden tractor.

GOLF CARTS

Harley Davidson 3 wheel golf cart, electric.

APPLIANCES

Ice machines; 2 - 1 door ice freezers; 1 - 3 door ice freezer; Star commercial popcorn machine; Leev ice freezer.

KITCHEN MISC.

TABLES & CHAIRS, ETC.

TOOLS

MISCELLANEOUS

Lots of miscellaneous items too numerous to mention.

PROPERTY OF THE PRAIRIE PORT FESTIVAL



REALTY-AUCTIONS-APPRAISALS

218 E. Central, El Dorado, KS 316-321-7112 or 316-320-1029

JOE SUNDGREN, Broker and Auctioneer
RICK REMSBERG, Auctioneer • JEREMY SUNDGREN, Auctioneer
www.sundgren.com

AUCTION

SUNDAY, OCTOBER 25 — 9:30 AM

Knights of Columbus Club, 2206 East 23rd Street

LAWRENCE, KANSAS 66046

Large auction with an excellent selection of quality items, highlights only are listed. Plan to join us inside.

See Complete Sale Bill, Photos and Coin List at
www.dandlauctions.com

9:30 AM 90 LOTS OF COINS & CURRENCY. 1901S \$5 Gold Piece; 3 2003 \$10 Gold Eagles; Flying Eagle and Indian Head Cents; Silver Dollars, Dimes, Quarters, Halves.

SPORTING GOODS, TOOLS:

14' Aluminum Boat w/ Trailer; 9 1/2 Hp Evinrude Boat Motor; Trolling Motor; Fishing Rods and Tackle; Lifejackets; Traps; Turkey Decoy; 2-Man Pop-up Tent; Lots of Golf Equipment; NIB Hunting Boots; Hand and Power Tools; Gas String Trimmers; Husky Concrete Mixer (Like New); Truck Bed Trailer; 3 Pt Sprayer.

JEWELRY, COLLECTIBLES, TOYS & GLASSWARE:

One-of-a Kind Coach Dick Harp Gold KU Bracelet w/ 7 Championship Basketballs 1938-1960; Men's 18K 1ct Diamond Ring; Several Advertising Clocks, Thermometers, Signs; Old Historical Kansas Books, incl. Annals of Kansas, Sod House Days; 1887 Plat Maps; 1880's KC Newspapers; WWII Books; Early Belgium Musket; Old Post Card Album; 60Gal Copper Kettle; Several Redwing Crocks; "Unique Coaster" Childs Wooden Wagon; Gibbs See Saw; Tins Wind-ups, incl. Scarce TPS Shuttle Zoo; Old Cast Iron Still and Mechanical Banks, incl.

Terms and Conditions: Positive ID required to register. Payment by cash or good check. Statements made the day of the auction take precedence over all printed or written material. All items sold "as is", "where is". Not responsible for accidents or loss. Kansas Sale Tax collected, unless copy of tax exemption certificate is provided. Concessions Available.

D & L Auctions, Lawrence, KS

785-749-1513 or 785-766-5630

Auctioneers: Doug Riat and Chris Paxton

Trick Dog, Zoo, Elephant, William Tell, Bull Dog; Arcade Sedans; CI Trains; CI Fire Pumper; Early German "Hauser" Horse-Drawn Water Wagon; CI Hansom Cab w/ Driver; Jointed Bear; Oil Lamps, Parts and Shades; Dazey Churn; Oak Wall Phone; Moving Eye Clock; 40 Pc. International Sterling "Prelude" Flatware; Large 1847 Wm. Rogers Flatware Set; Haviland China; HP Limoge Plates; Milk Glass; 300 Comic Books; 1000's of Sports Cards; 80+ Die Cast NASCAR Collector Cars, Banks and Caterpillar Toys; Fossils; Dept 56 Villages; Aluminum Tree; Hallmark and Vintage Ornaments; Albums; Old Fruit Jars; Coca-Cola; Old Carpenter's Chest.

ANTIQUE & MODERN FURNITURE, HOUSEHOLD:

Spool Cabinet; Curved Glass China Cabinet; Bookcases; Walnut Wishbone Dresser w/ Marble Insert; Walnut Armoire; 1800's Walnut Dining Table w/ 4 Chairs; Walnut Settee; 4 Old Ice Cream Chairs; Oak Fern Stand; Walnut Parlor Table; Sofa Table; End Tables; Walnut Corner Shelf; Oak Table w/ 6 Chairs; 1950's Dinette Set; Futon; Mirrors; Lamps; Pictures; Manatowac Ice Machine; Mikasa China; Brass Elephant and Horse; Linens; Chandeliers; and More.

WC POLE BARN

30' x 50' x 10'Galvalume \$6,900
29 gauge metal attached w/screws

Prices fully enclosed including
one 12-ft. slider & one entry door.

10-year warranty on labor & materials.

866-757-6561

• 14 YEARS BUILDING EXPERIENCE •



SPECIAL PRE-VAC, EID, PVP CALF SALE

SAT., OCT. 24 • 1PM

At Sylvan Sales - Sylvan Grove, KS

450 head pre-vac, EID, PVP, with 200 being weaned

850 head pre-vac, with 250 being weaned
500 head black hided steers & heifers, no fall shots.

Don't miss a chance to view these 1,800 head of top quality calves in Sylvan Grove

For more information:

Greg Carey
785-483-1455

Ron Werth
785-650-4829

Toby Meyer
785-658-5772



FLINT HILLS 156.9 ACRES GRASSLAND LYON CO.

AUCTION

TUESDAY, NOVEMBER 10 — 7:00 PM

AUCTION LOCATION: Olpe Chicken House, OLPE, KANSAS on Hwy. 99.

PROPERTY LOCATION: Approximately 4 miles South of Olpe, KS on Hwy. 99 to Rd. 30 then East 3.5 miles. Property is on South side of road. WATCH FOR SIGNS.

LEGAL: E/2 of NW/4 and W/2 of NE/4 less Rd. R/W all in Section 28, Twp. 21, Rge 12 E of the 6th PM Lyon County, Kansas.

TAXES: Based on 2008: \$329.62. Sellers mineral rights are intact and sell with the real estate.

GENERAL DESCRIPTION: Slightly rolling grassland watered by 2 ponds. Timbered draws to provide livestock shelter and habitat for the deer and wildlife, while keeping the integrity of the grazing land.

Approximately 32.85 acres of brome which has been used for hay and the balance of 134.05 acres in native bluestem, mixed grasses, ponds and timber. The fences are average 5 barb wire and steel posts with some hedge. Access: Very good county Rd. 30 on the North end. Electricity and rural water are affordably close to the property if improvements are desired.

REAL ESTATE TERMS: Terms: \$12,000.00 down as earnest money deposit evening of auction. The remaining balance is to be paid in the following manner: 40% of the remaining balance due on or before December 9, 2009 with the remainder paid on January 6, 2010. At which time buyer will receive Kansas Warranty Deed. Possession will be given to the buyer at closing on or before December 9, 2009. Title insurance shall be split between the buyer and the seller for the owner's policy. There is no lease on the property. Seller will be responsible for the 2009 taxes. Property is not sold subject to financing. All statements evening of auction take precedence over advertisements.

AUCTIONEER'S NOTE: An affordable tract of Flint Hills grass with good access, utilities reasonably close, wildlife habitat. Hwy. 99 makes it easy access to Olpe, Madison, Emporia. Come take a look at this opportunity.

Inspection anytime with Griffin Real Estate & Auction Service LC. See our numbers listed below.

SELLER: KERRY L. SANDWELL



Office: 305 Broadway Cottonwood Falls, Ks. 66845
Phone/Fax: 620-273-6421 • Toll Free: 1-866-273-6421

RICK GRIFFIN, Listing Broker

Home: 620-274-4336 • Mobile: 620-343-0473

For more information and photos, visit our website:

www.GriffinRealEstateAuction.com

ESTATE AUCTION

FRIDAY, OCTOBER 30 — 10:30 AM

LOCATED: 231 East Commercial Street

WATERVILLE, KANSAS

HOUSEHOLD & COLLECTIBLES

18' Frigidaire refrigerator, 5 yrs old; Gibson 15' upright freezer; older Sears elect. dryer; Toshiba 27" color TV; entertainment center; RCA 13" color TV; Sylvania console stereo; maple hutch; cedar chest; swivel rocker; divans; recliner; coffee & end tables; large table lamp; 4 pc. full size maple bedroom set; king sized bookcase headboard bed; night stand; 2 drawer file cabinet; metal cabinet; kitchen dinette set; microwave; pots & pans; dishes; glasses; lamps; cookbooks; Pyrex; tea towels; baking tins; lap trays; utility cart; pictures & wall decor; 2x3' wall mirror; Electrolux vacuums; folding table & chairs; yard windmill; modern Elgin Anniversary clock; quilt rack; sheets & pillowcases; pictures & wall decor; blankets; woven rugs; **COLLECTIBLES:** Kloster Grandfather's clock double door w/brass face & weights; 4 shelf oak china cabinet with glass sides & front leaded glass; oak 3 shelf glass front & sides china cabinet; round oak table; 5 Bentwood chairs; gateleg table; oak washstand; pattern back oak straight chairs; pattern backed caned sewing rocker; sm. Bentwood chair; oak 4 legged stand; 1950's Philco cabinet radio/phone; glass ball footed organ stool; glide rocker; towel rack; player piano roll wood cabinet; fancy dishes & glassware; pressed & bubble glass; glass trays; glass berry set; orange pitcher & 5 glasses; German sugar bowl; Flow Blue platter & bowl; Noritake Canton 12 pl. set of china; German bowls; glass rabbit & chicken candy holders; cow salt & pepper; Carnival glass bowl; 12+ cups & saucers; few commemorative plates; Hull vase; English chamber pot; 18" celluloid face & arms doll w/cloth body; few red dishes; metal pitcher & glasses; head vase; metal tub; few Valentines; RA Campbell Jewelry 1924-25 calendar scenes; sm. spoon collection; 12 pl. set of community silver; Union State Bank of Olsberg Can Banks; Occ. Japan toothpick holder; costume jewelry inc.: brooches & rhinestone; jewelry boxes; **Quilts** inc.: Handkerchief, Butterfly, 1933 Friendship, White Cross, Pin Wheel; dresser scarves; aprons; tablecloths; doilies; crochet items; glass handled hand mirror; fruit jars; stone mixing bowl; kerosene lamps & lantern; W. German cuckoo clock; 2 steins; In-graham 8 day mantle clock; butter mold; butter churn; labeled milk bottles; 5 gal. Western stone jar; oak crank wall phone; coal bucket; irons; trivet; cream can; German cake tin; green handled hand mixer; license plates, 40's, 50's, 60's & 70's; harmonica; **Coins:** 7 - \$2.00 bills; 12 Kennedy half dollars; silver dollars: 1886, 3 - 1923, 1924, 1925; Franklin half dollars, 1958, 1961; Eisenhower dollar, 1972; **Tools:** SK 1/2" socket set; few long handled & hand tools; wheelbarrow; garden hose; 16" wood ext. ladder; McCullough Mini Mack 30 chain saw; painter's step stool; Jacobsen Sno Burst elect. start 20" snow blower; yard art; bird bath; Winchester 62A S-L-LR pump 22 rifle; other items.

TERMS: Cash sale day. Statements sale day take precedence. Sellers and auctioneers not responsible for accident or theft. Lunch served.

ETHEL WEIDE ESTATE

Everett Roepke & Edward Bergsten, Co-Exec.

AUCTIONEERS

Tim or Rob Olmsted

Beattie, KS 785-353-2487

Jeff Sandstrom

Marysville, KS 785-562-3788

www.olmstedrealestate.com

www.marshallcountyrealty.com

for lost souls. Knowing how our pastor felt about other denominations, I was pretty certain our mission didn't extend to Lutherans, Methodists and Catholics. The song was written by Knowles Shaw in 1874. America was a rural nation then, and most people could easily make the connection between a harvest of grain and a harvest of hearts. It's not quite so clear-cut anymore, but what's interesting is that the song is still sung and that the harvest still stands as a metaphor for preparing for the afterlife.

As a lapsed Baptist, I see this more from a historical perspective than from divine injunction. The way I see it, bringing in the sheaves has become a metaphor for stockpiling essentials, for gathering the fruits of our labors. Walnuts, chiles, tomatoes or beans, Hairy Houdini and I are engaged in the age-old agrarian ideal of bringing in the, well, I really hate the tune and wish I could shake it out of my head.

MAST deadline coming soon for those who wish to participate

Oct. 30 is the deadline to enroll in Kansas State University's Management, Analysis and Strategic Thinking program, also known as the MAST program.

The program is designed to enhance management skills and provide new decision-making tools and strategic planning strategies for agricultural producers.

Past participants have come from a wide range of agricultural backgrounds — cow-calf producers, diversified crop farmers, land owners and dairy managers — and from across the United States — Iowa, Missouri, Texas, Virginia, and Minnesota.

The program starts with a two-day on-campus orientation Nov. 16-17, 2009, where participants meet one another, as well as program administrators and faculty who teach the on-line modules. After the orientation, participants return home to work on the modules on their own time.

The program will end with a second on-campus visit Feb. 23-24, 2010. At that time, class members will provide feedback and

participate in a graduation ceremony.

The cost of tuition in the 2009-2010 MAST program is \$1,250 per person or \$1,100

per person if two or more participate from the same business.

More information is available on the MAST

website: www.agmanager.info/MAST or by contacting Goheen at (785) 532-4434 or agoheen@agecon.ksu.edu.

AUCTION

SUNDAY, OCTOBER 25 — 9:30 AM

Auction Location: 4 miles SE of CLAY CENTER, KS on black top, Broughton Rd. (Around past Army in Clay Center, KS) to 1883 Broughton Rd., Clay Center, KS.



REAL ESTATE & PERSONAL PROPERTY

AUCTION

SATURDAY, OCTOBER 24 — 9:00 AM

Offering personal property for sale at public auction, located at 2623 N. Burmac Rd., from the intersection of U.S. Hwy. 50 and Burmac Rd., BURRTON, KS, 3 1/2 miles North.

REAL ESTATE SELLS AFTER PERSONAL PROPERTY

LEGAL DESCRIPTION: Part of the SE 1/4 of 5-23-3, except beginning in the SE/corner, W. 1064', N. 450', E. 1064', S. 450' to P.O.B. less R.O.W., 150 acres more or less, Harvey County, KS. Property is improved with a 3 bedroom, 2 bath, 2544 sq. ft. 2 story home built in 1974 and remodeled in 1988. This property has central heat/air, full basement, fireplace, vinyl siding, 4 car garage on 150 acre fenced pasture with ponds. This property has a nice location with pole shed, trees and an opportunity for recreational use as well as raising livestock. Attend this auction prepared to BID AND BUY!

TERMS OF SALE: 10% of purchase price down day of auction, balance due as of closing date November 24, 2009. The seller will provide owner's policy of title insurance in the amount of the purchase price. The cost of such title insurance and any escrow closing services will be shared equally by the seller and buyer. Sale is not contingent upon buyer financing. Real estate taxes of \$2,346.80 will be prorated the day of closing. Farmers National Company are acting as agent of the seller. For more information call Van Schmidt, 620-367-3800 or Farmers National Company, 402-496-3276.

TRACTORS, VEHICLES & FARM RELATED ITEMS

1975 Case 1370 tractor, 3 pt., PTO, hyd., cab and air, duals; 1969 AC 190 gas tractor, 3 pt., PTO, hyd. with loader; 2003 JD 2210, 3 cyl. diesel 4x4 hydrostat drive tractor/mower, 62" deck, 3 pt., PTO, hyd., roll bar, only 300 hrs., like new; Rhino 10" single wing fold rotary mower; 6' 3 pt. rotary mower; springtooth; 3 pt. blade; 3 pt. box blade; 300 gal. sprayer on wheels; 3 pt. 25 gal. 12v sprayer; 24" hyd. tree saw, fits Bobcat; JD sickle mower; 3 pt. bale mover; grain-o-vator; 3 pt. post hole digger; 3 pt. rake; 3 pt. single btm. plow; 3 pt. seed-spreader; 3 pt. hyd. hay unroller; 1990 Jeep Cherokee 4x4; 1980 Chev. 3/4 ton 4x4 pickup, 454 eng., 50% restored; 1974 Jeep CJ5, 350, Chev. eng., 4 spd., 50% restored; old Ford winch truck; old travel trailer; 20 portable cattle panels; cattle 1/2 circle with squeeze chute and head gate; round bale feeders; stock tanks; tank heaters; feed bunks; vet supplies; new T-posts and barb wire; 3 ring bulk bin; elec. cattle scales; cattle showing equip. inc.: alum. grooming chute, stainless show box, stall panels, clipper; semen tank and 30 straws of ABS bulls and 20 frozen embryos; Lincoln 225 amp welder; cutting torch; air compressor; air tools; McCulloch 1750 psi power washer; McCulloch chain saw; 5 kw generator; Craftsman 10" band saw; Craftsman belt/disc sander; Craftsman radial arm saw; bench grinders; line trim-

mers; laser transit and tripod; Craftsman 5 hp. rear tine tiller; Chev. 350 complete overhaul kit in box; DeWalt 14" chop saw; car parts; 3/4" socket set; hand tools; ladders; shop vac and more.

GUNS & HOUSEHOLD ITEMS

Winchester Mo. 50 12 ga. auto shotgun; Winchester Mo. 120 20 ga. pump shotgun with vent rib; Winchester Mo. 1906 .22 S/L rifle; Winchester Mo. 94 30/30 lever action rifle; Winchester 308 Mo. 70 lever action rifle; Winchester Mo. 50 12 ga. semi auto shotgun with vent rib; Stevens Mo. 8110 20 ga. side by side shotgun; Savage Arms Fox Series 12 ga. side by side shotgun; Ithica Mo. 72 .22 cal. lever action saddle gun; Remington Mo. 7400 30-06 rifle with Bushnell scope; JAP 6.5 bolt action WWII souvenir rifle; Ruger 357 mag. pistol; lots of ammo; Whirlpool 19.6 cu. ft. upright freezer; old secretary desk; recliners; wing back chairs; sofa; 2 dining room tables and chairs; Seth Thomas clock; Sony stereo; coffee table; twin beds; china hutch; Maytag 20 cu. ft. upright freezer; microwave; cast iron bank; toys; lg. salt and pepper collection; extensive Capella collection; pottery goblets; florist frog collection; 2 J.R. Hamel's watercolors; framed prints; Andrew Wyeth plate; treadle sewing machine; china; crocks; enamelware; Westernware; ice cream parlor table and chairs; crystal; painted plates; Possible Dreams Santa collection; glassware; oak wooden ice box and more.

TERMS: Cash day of sale. Statements made day of sale take precedence over advertised statements. Lunch provided by K&B Catering.

ROBERT & PRUDENCE THORNTON

VAN SCHMIDT • Auctioneer/Realtor

7833 N. Spencer Road, Newton, KS 67114
620-367-3800 or 620-367-2331

Schmidt Clerks & Cashiers

www.farmers-national.com

Farmers National Company, 402-496-3276

STANDARD OIL COLLECTIBLES: TO SELL AT 1:00:

2 glass Standard Oil pump or sign globes; Standard porcelain sign with blue ribbon; Standard double sided porcelain sign with metal posts mounted to it; Standard Products metal sign, 4 ft. long; 2 - 56 gal. Standard Oil barrels; Polar and RC glass advertising signs; Atlas wiper blade cabinet on wheels; Atlas belt measurer; Amoco glass tumblers; Standard Oil salesman kit for testing gasoline; (6) 5 gal. Standard Oil fuel cans, 1 with brass tag; Standard Oil table lamp; Amoco plastic sign; gas tank measurer; 6 Standard Oil advertising lighters; older fuel pump for filling station; Mobil (regular) plastic fuel pump top.

COLLECTIBLES: Antique 8 bottle oil carrier with 6 oil bottles with spouts; Pepsi Cola 10 cent pop machine; 2 Pepsi wood cases; several wood Pepsi crates with bottles; National cash register; cast iron wood burning stove with chrome top; Wizard fuel oil heating stove; 4 gal. Red Wing crock; several crock jugs; 5 gal. cream can; double galvanized tubs on stands; large slate chalkboard; small slate chalkboard; collection of 45 records; 75 and 45 record player, 1950 model; Zenith table top radio; hand rail car mover; 1950 Monopoly game; old U-Haul collectible items; toy U-Haul pickup with trailer; '69 Camero in original box; Ford T-Bird promo car in original box; Corvette promo car; Cadillac El Dorado promo car; purple power Wildcat liquor decanter; Sharp, Clay Center, KS Dairy Queen bottle opener; 1980 World Series tickets, game 5; yard long picture of the Lord's Supper; Jack Daniels presentation box with shot glasses; 6 Field & Stream mug set; Mickey Mouse wrist watch; 17 jewel Elgin pocket watch; Clay Center,

KS "Court House" belt buckle, No. 176; pair of roller skates; B&G Christmas plates, 1969-1985; berry bowl pattern glass with 6 bowls; green Depression platter; green qt. measurer; berry bowl with 6 small berry bowls with gold trim, very old; Jewel Tea: 6 dinner plates, 2 platters, 2 serving bowls; numerous other pieces; Int. 460, 560, 660 preventive maintenance manual and operators manual; JD 406 and 407 planter manual; hand corn sheller; horse drawn 1 row lister.

SHOP ITEMS: Atlas tire changer, ETC-1701677017; Campbell Hausfeld portable air compressor; Snap-On battery charger, Model BC-4200; Snap-On amp load tester/starter and charging circuit tester, Model MT552B; Snap-On wheel balancer, Model WB-240; Snap-On lift-off top tool boxes; Fox Supermatic 6/8/12 battery charger; Atlas gas powered generator with AC power plant and battery boost; portable air compressor; 2 battery chargers, Supermatic and Heyer; air chisel; air ratchet; Atlas tester; Williams lift-off top tool box; set of Williams open end/box end wrenches; numerous sockets; Wissota bench grinder, 1/3 hp.; Craftsman 1/4 in. drive socket set, metric; nut driver set; 3/4 in. socket set; 1/2 in. swivel socket; Craftsman quick wrench, 3/8-3/4; various hand tools; air bubble; numerous extension cords; Craftsman 5.5 hp. wet/dry vac; B&D 1/4 electric drill; Hoppy headlight service center; 3 - 55 gal. rectangular oil tanks with pumps, also a 15 and 30 gal. with pumps; Amoco Sta-Warm space heater; jumper cables; barrel pumps; oil stand and pump; 2 wheel dolly; various fire extinguishers; Golden Rod fence stretcher; pipe rack; large shop fan; metal shelving.

YARD CARE & YARD ART: Wheel Horse riding lawn mower,

12 hp. Kohler engine with 40 in. mower deck; 1 Wheel Horse riding lawn mower for parts; Red Devil Load Hog 2 wheel trailer for ATV or garden tractor; wood windmill; gas powered weed eater; garden planter with plates.

PORTABLE SHED: 10 ft. x 10 ft. portable shed with double doors.

FILLING STATION SUPPLIES & U-HAUL SUPPLIES: Numerous new oil and air filters; 9:00/20 truck tire; 4 filling station nozzle and meter units; 2 new trash barrel covers; various wrenches for large valves; numerous U-Haul trailer connectors.

FARM EQUIPMENT & FARM RELATED ITEMS: Ford 641 Work Master tractor, gas with 2525 hrs., excellent rubber, 3 pt. and live PTO; Comfort Cab for a 641 Ford tractor; set of tractor chains for 12.4x28 tires; front end loader for a Ford tractor; Cut Master 5 ft. rotary mower, 3 pt.; 7 ft. 3 pt. rear blade; 2 section 3 pt. springtooth; 8 ft. 3 pt. rear blade; Ford 2x16, 3 pt. plow; Ferguson 214, 3 pt. plow; 2 row 3 pt. lister; 3 pt. rear boom for Ford tractor; 3 pt. single row lister or potato digger; 2 wheel trailer with motor pump to spray cattle; 8 ft. Sears & Roebuck drop fertilizer spreader; 3 section Dempster springtooth, 3 pt.; Ferguson 2 row top planter with fertilizer boxes; 8 ft. 3 pt. tandem disc, excellent blades; 3 pt. rear dirt scoop; JD No. 9, 7 ft. sickle mower, 3 pt.; Int. 5 ft. trail type rotary mower with cylinder; 2 JD No. 5 sickle mowers; 1 section drag harrow; 10 ft. slip in stock racks; 4 section drag harrow; 2 wheel pickup box trailer; 2 wheel pickup box trailer with high metal sides; 2 wheel trailer chassis; tandem axle trailer with winch, bumper hitch; Dempster pump jack; Int. tractor rear wheel weights; pick-up side mount fender tool box; front 2 ton truck bumper; galva-

nized oblong stock tank; 5 - 30 gal. oil drums; numerous hand pumps for fuel; cast spoke wheel for 2 ton truck; various lengths of fuel pump hoses.

PTO GENERATOR: Windco PTO generator on 2 wheel trailer, 15,000 kw.

APPLIANCES & HOUSEHOLD FURNITURE: TO SELL AT 2:00 PM:

Frigidaire 17.0 cu. ft. refrigerator; GE refrigerator; Kenmore portable dishwasher; GE electric cook stove; Sharp carousel microwave; small chest type deep freeze; Maytag sq. tub, wringer washer; **Antique Furniture:** S roll top oak office desk; antique oak break front china cupboard with storage below; antique oak rocker; Duncan Phyfe walnut dinette table with 4 chairs and leaves; old oak office desk; **Modern Furniture:** Dinette table, drop leaf; 3 drawer chest and 3 drawer dresser with mirror; Craftmatic twin electric bed, very good; 3 piece blond bedroom set; metal bed; small end table; base cabinet; green rocker/recliner; wood trim easy chair; console record player; 3 piece brown sectional divan; entertainment center; matching end table and coffee table; small wood desk; 2 - 2 drawer file cabinets; 8 ft. ping pong table.

HOUSEHOLD ITEMS: Various dry goods; various bedding; various games, most from the 50's; picnic basket; numerous factory fruit jars, quarts and pints; Coleman lantern; Coleman heater; carpet cleaner; numerous puzzles; set of Corningware bake dishes; Wearever pot and pan set, brand new; Graniteware canner; VCR player; numerous boxes of items not mentioned.

AUCTIONEER'S NOTE: This is a very large one day auction. Norman and Mary Lou will move into town and are selling everything. Norman ran the Standard Oil Filling Station for years and Standard Oil bulk plant and this auction includes all of that business that remains. Hope to see you at the auction.

TERMS & CONDITIONS: Cash or personal check with proper ID, or Visa, Master Charge or Discover credit card and debit cards. A 4% handling fee will be charged on all credit cards and debit cards only. All items must be paid for before removal. Statements made day of auction take precedence over printed material. Not responsible for accidents or lost items. Mugler Auction Service L.L.C. is agents only. Lunch served.

NORMAN & MARY LOU RETTIG

CASHIER: Reta Hemphill

MUGLER AUCTION SERVICE L.L.C.

P.O. Box 154 - Clay Center, Kansas

Randy Reynolds

785-263-3394

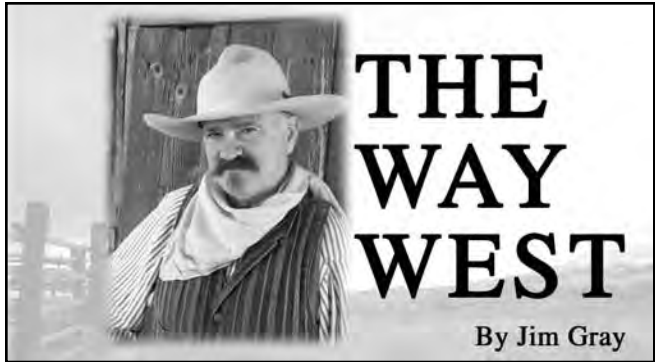
Paul Geist

785-263-2545

Harold Mugler

785-632-3994

or mobile 785-632-4994



Wild Bill Meets The Cowboys

Wild Bill Hickok made his reputation with his guns. Hickok came to national prominence after killing Dave Tutt at a distance of seventy-five yards in a duel at Springfield, Missouri. At Hays City, Kansas, he killed three men in three separate shootouts. He was wounded in his last Hays City fight involving two soldiers. As they were both lying in their own blood on the saloon floor, Hickok dove through a window and fled to the Hays City Boot Hill cemetery for safety.

From the cemetery over-

looking the town Hickok could monitor the movements of his enemies. Soldiers roused out at Fort Hays searched every saloon and business house in Hays City. Hickok laid low, eventually making his way out of town, returning to friends in Ellsworth.

Pvt. Kile died of his wounds at the post hospital the following day. Pvt. Longeran recovered and in doing so gained bragging rights as the only known man to survive a bullet from Wild Bill. Since Kile and Longeran had officially de-

serted by going into Hays City without leave, the army chose not to press for the arrest of Hickok. Even so, he would not return to Hays City.

Hickok kept a low profile while recuperating at Ellsworth, but not so low that he couldn't be found if someone was looking. Someone was definitely looking for Hickok.

Abilene was the end of the Chisholm Trail and wild as a March hare. Abilene finally found an officer to tame the town one year earli-

er, but when Bear River Tom Smith stepped into a dugout to arrest a buffalo hunter the buffalo hunter got the best of him. Abilene's Marshal Smith was laying six feet underground and few men wanted the job.

City leaders hoped Wild Bill Hickok's reputation and if need be, his guns, would hold the cowboys in line. They found Hickok on a ranch north of Ellsworth He was interested, but he'd have to see the town first.

Wild Bill arrived in Abilene during the second week

of April, liked the town and took the job. John Wesley Hardin was one of Hickok's first challenges. Hardin arrived with a trail herd and openly defied the "No Gun" law. According to Hardin, Hickok approached with his pistols drawn. He ordered Hardin to give up the guns on his hip. With that, Hardin offered the guns butt forward with no intention of giving them up. When Hickok reached for them Hardin performed the "border shift," reversing the pistols to catch Wild Bill with his guard

down. Hardin claimed that Wild Bill suddenly changed his tune, telling the young man, "I will be your friend."

Nevertheless, Hickok had little trouble keeping the peace. The summer passed in relative quiet. Cowboys shipped their cattle and returned to Texas with stories of Abilene and its famous Marshal Wild Bill Hickok.

The law job in Abilene ultimately changed Wild Bill Hickok's life forever. The evening of October 5th, 1871 turned into one of revelry in Abilene. Cowboys

AUCTION

SATURDAY, OCTOBER 24 — 10:00 AM

472 S.W. 50th, **EL DORADO, KS**
 4 miles South of El Dorado on Hwy. 77, 1/2 mile West on 50th.

<p>VEHICLES</p> <p>4-WHEELER Kawasaki Bayou 300 4x4.</p> <p>TRACTORS 1966 JD 2510 tractor with JD 47 loader; 1976, 4630 tractor, cab and air, duals; 1971 JD 7020 4x4 tractor; 1972 JD 4320 dsl. tractor, cab with 158 loader.</p> <p>TRAILERS Ranch King 7x16 gooseneck stock trailer; Dugan gooseneck stock trailer, 6x24; HM gooseneck flatbed trailer, 20'; 2 panel trailers; JD 4 wheel trailer; 40' gooseneck round bale trailer; Hillsboro dump trailer, 16' gooseneck with stock rack.</p> <p>COMBINES 1975 Gleaner combine M, cab,</p>	<p>diesel, 20' header.</p> <p>MOWERS, TOOLS, GUNS</p> <p>FARM EQUIPMENT JD 8300 drill; JD planter 7000, 6-30, fertilizer and insecticide; JD 1408 rotary mower, 14'; JD 535 baler BRB, new belts; JD 8350 grain drill, 7 1/2'; White speed mower, 12'; Allis 1300 field cultivator, 30'; NH 1431 discbine, 13 1/2'; 14' Schaffer offset disc; Hesston 12 wheel hay rake; Miller welder on trailer, electric start.</p> <p>HAY (BRB) Approx. 300 bales.</p> <p>MISCELLANEOUS Lots of miscellaneous items too numerous to mention.</p>
--	--

ESTATE OF LARRY E. FIESER

Sundgren

REALTY-AUCTIONS-APPRAISALS
 218 E. Central, El Dorado, KS 316-321-7112 or 316-320-1029
 JOE SUNDGREN, Broker and Auctioneer
 RICK REMSBERG, Auctioneer • JEREMY SUNDGREN, Auctioneer
 www.sundgren.com

OnLine Only AUCTION

TREES, TREES AND MORE TREES

Bidding opens Oct. 15, 2009
BIDDING CLOSSES OCT. 28, 2009 - 1:00 PM
 Nursery stock is located at 17770 Edgerton Road
EDGERTON, KANSAS

Go to website for pictures and bidding
www.dlwebb.com

Inventory Inspection October 24 & 25, 1:00 to 3:00 p.m.

<p>Hundreds of Trees Including Blaze Maples, Fantasy Maples, Sunset Maple, Glory Maple, Frost Birch, River Birch, Heritage Birch, Redbuds, Ash, Honey Locust, Sweetgum,</p>	<p>Tulip, Crabapples, Redwoods, Pear, Oak, Buckthorn, Sumac, Purple Locust, Bald Cypress, Elm, Zelkova, plus various Pines, Junipers, Spruces, and Others.</p>
---	--

All trees to be marked by row for your browsing. Pickup winning items Oct. 29th, 30th, and Nov. 6th and 7th, 10:00 a.m. to 5:00 p.m. each day.

Download bidding information, pictures, and detail information from website www.dlwebb.com

AUCTIONEERS NOTE: This is nursery overstock auction and now is the time for you to plant around your house and be ready for awesome trees next spring. Take advantage of this tremendous opportunity. Log on, look, and bid. We appreciate your business.

TERMS: You will be sent an e-invoice, you will present the invoice upon pickup and pay at the site prior to loading. See additional on line bidding terms on website. Kansas State Sales tax is applicable. Not responsible for accidents or lost items, or misrepresentation of sale items by owners or Auction Company. All items sell as is / where is without warranty expressed or implied. Auctioneer is agent of seller only.

Auction Arranged and Conducted by Dave Webb

WEBB & ASSOCIATES

AUCTIONEERS & APPRAISERS

Webb & Associates
 Auctions & Appraisals
 Stillwell, Kansas
 913-681-8600 / fax 913-681-6425
 Toll free 1-888-913-WEBB
www.dlwebb.com

Tree & Brush Free Ranch

MULTI-LEVER LOPPER

Ideal for cutting cedar trees in pastures

• Coated blade • Lightweight aluminum handles — 28 1/4 inches long for long reach. Weight 4.1 lbs. • Slicing cutting action • Special leverage for effortless cutting • Cuts branches and trees up to 2 inches thick.

DICK'S RANCH SUPPLY

5562 Kiowa County Ave. 57, Belvidere, KS 67028
1-800-201-2351

Corral Plans - \$5 + \$2.98 P&H
 Phone Orders Welcome
ALL MAJOR CREDIT CARDS WELCOMED!

Prices and Specifications subject to change without notice.

Wanted Farm and Industrial Equipment Consignments

LATE FALL MACHINERY CONSIGNMENT AUCTION

FRIDAY, NOVEMBER 20
 at 109 S. 4th Street
CLAY CENTER, KANSAS

If you haven't used it for a year, do you really need it?
 With stronger grain prices it might be the time to sell.
 We will help you turn it into cash.

TO BE ADVERTISED MUST CONSIGN BY THURSDAY, NOVEMBER 5, 2009

Contact Harold Mugler at 785-632-4994 cell
 or home & office: 785-632-3994

MUGLER AUCTION SERVICE L.L.C.
 109 S. 4th Street - Clay Center, Kansas

Harold Mugler 785-632-3994 or Mobile 785-632-4994	Randy Reynolds 785-263-3394	Paul Geist 785-263-2545
---	--------------------------------	----------------------------

The Sun Sets on the Final Chapter of Triple C Farms

Announcing... **The Complete & Total Dispersal Sale**

Kansas Division of TRIPLE C FARMS

<p style="text-align: center;">Triple C Farms - Kansas Division</p> <h2 style="text-align: center;">All Cattle, Semen & Embryos</h2> <p><i>When</i> Wednesday, October 28, 2009 • 11 am</p> <p><i>Where</i> Manhattan Commission Company Manhattan, Kansas (2 1/2 miles east on US Hwy. 24)</p> <p><i>What Sells</i> Selling the Breed's Best In Simmental & Angus Genetics—Everything Sells!!</p> <ul style="list-style-type: none"> • Herd Bulls: 2-year-old and 18-month-old bulls ready for service this fall • Spring Calving Cows with their 2009 calves • Fall Calving Cows many with calf at side • 2008 Fall Born Heifers (ready to breed) • Commercial Angus and SimAngus Cross Cows Bred to Purebred Simmental Bulls • Recipient Cows Simmental and SimAngus cows carrying pregnancies of elite matings <p>Plus</p> <ul style="list-style-type: none"> • Semen, Embryos, Semen Tanks and Show Equipment 	<p style="text-align: center;">Triple C Farms - Kansas Division</p> <h2 style="text-align: center;">Complete Liquidation of Land & Equipment</h2> <p style="text-align: center;">Monday, November 23, 2009</p> <p><i>When & Where</i> 10 am — Equipment Auction Main Farm Site, Ramona, KS • South of Herrington, KS (US Hwy. 177, west to 370th Rd., 5 miles south and 5 miles west—watch for signs.)</p> <p><i>What Sells</i> Equipment Auction Featuring</p> <ul style="list-style-type: none"> • Complete Line of Tillage & Hay Equipment: Combine, Headers, Tractors, Balers, Field Cultivators, Disk, etc. • Cattle Equipment: Hydraulic Chute, Hay Feeders, Creep Feeders, Mineral Feeders, Cattle Trailers, Cattle Panels, Corrals, etc. • Many, Many Other Items... too numerous to list <p><i>When & Where</i> 3 pm — Land Auction Tri-County Fairgrounds Activity Center, Herrington, KS Land Auction — 1,300 Acres +/- Sells!</p> <p><i>What Sells</i> Containing 720 acres of cultivation and the rest in improved grasses or native grass pastures along with machine sheds and out buildings.</p>
---	---

TRIPLE C FARMS

Catalogs Sent Upon Request Only • For catalog or information on either auction, contact:

<p>J.W. Brune 414 E. 700 Rd. Overbrook, KS 66524 (785) 865-6624 jwbrune@embarqmail.com</p>	<p>AUCTIONS & REAL ESTATE Chas Wheeler Owner/Auctioneer (660) 327-5890 • (660) 327-1806 www.wheelerauctions.com</p>	<p>LAND & CATTLE AUCTION CO Mike Williams Owner/Auctioneer (816) 797-5450</p>
---	--	--

Auction details and photos as they become available on WheelerAuctions.com

celebrated the end of the shipping season, going from saloon to saloon, drinking and carousing..

Phil Coe, owner of the Bull's Head Saloon was in the crowd. As they passed from the Alamo Saloon into the street, Coe fired his pistol at a stray dog. Hickok found a crowd of 50 or so men. Phil Coe still had the pistol in his hand. With both guns drawn Hickok asked for an explanation. Coe admitted shooting at a dog. Whether he made an unfortunate move or Hickok just saw his chance to shoot, no one really knows. Guns

blazed. Coe dropped into the street as Hickok's friend Mike Williams rushed forward. Wild Bill's instincts were instant. Williams fell almost at the same time as Coe. Wild Bill had killed his friend Mike Williams and as far as is known, fired on his last man.

Wild Bill left Abilene that fall. He seemed to have had his fill of killing. He continued a long habit of gambling, going to Deadwood, Dakota Territory, where he found a bullet waiting for him August 2, 1876.

Copyright 2009 by Jim Gray.

Fall is the time to plant garlic, says Extension expert

Garlic is not on everyone's list of garden plants, but it should be, said a University of Missouri Extension horticulture specialist.

"Not only is it a simple crop to produce, it keeps the ground productive throughout the winter and offers a range of health benefits," said Marilyn Bates.

As garlic increases in popularity, it is becoming more and more difficult to find recipes that don't call for garlic, Bates said. "With that, why not grow your own garlic?"

Garlic in the garden is not grown from seed but from individual cloves. "It is important to plant these cloves in the fall because a cold period is required for the 'mother bulb' to break apart, making it possible to produce an adequate head in the

next season," he said.

"Sourcing these heads of garlic is easier now than it was 15 years ago, when most commercially available garlic came from northern California," he said.

Begin by preparing a section of the garden for planting. Bates suggests using one row along the back of the garden, so you don't disturb the garlic when doing spring work.

Crack each head and separate the cloves, paying no attention to the papery covering surrounding them, known as the tunic. Select only the large, outer cloves, which will produce larger heads. Plant the cloves root end down (point up), 2-3 inches apart and about 1 inch deep.

Cover the row with a thick layer of straw or other light mulch to prolong

warm soil temperatures. This will allow adequate root growth to occur before the ground freezes, suppress weeds during the fall and spring, and protect the shoots when they emerge in the spring. It may be worthwhile to mark the row when planting so that you know exactly where to expect them to come up.

"Garlic is a heavy feeder, so it requires a good fertility program," Bates said. Test the soil to make sure the garden can deliver what it needs. Without adequate soil, the heads that develop will be small and may fall apart when harvested.

Harvest the heads when the leaves begin to die down in early summer. Before storing, garlic needs to be cured with the top growth still attached, he said.

MANHATTAN SHOE REPAIR

Repairing

- Boots
- Shoes
- Purses
- Luggage
- Back Packs
- Ball Gloves

M-F • 8-5:30 • Sat. • 8-1
216 South Fourth
Manhattan, KS
785-776-1193



Combines Skidsteers IH Tractor Hydros

Send in your hydrostatic parts, etc. to be inspected & reconditioned to factory specs. New parts in stock for most brands. For fast turnaround, we can exchange, repair or reman your hydrostat. ***** SPECIAL ON IH TORQUE AMPLIFIERS & RELATED PARTS. *****

Ask about our package deal
Toll Free 877-525-2875
WASHINGTON, KANSAS
www.herrsmachine.com

AUCTION

MONDAY, OCTOBER 26 — 5:00 PM

Auction will be held at the home located ½ mile West of — SCANDIA, KANSAS

CARS & CAMPER

1992 Jaguar XJ6 4 door car, dark green, saddle interior, loaded, 100,000 miles; 1985 Ford Crown Victoria 4 door car, white, cloth interior, loaded, 69,000 miles; 1957 Wolf Wagon aluminum motorized camper not running; 8' x 16' 4 wheel heavy duty flat bed trailer; aluminum shallow V boat.

COLLECTIBLES, TOOLS & HOUSEHOLD

IHC 102 Cub Cadet 6 sp. lawn tractor w/36" tiller no mower; railroad freight cart w/rubber tires; wood ladder; new 36" steel door; amo boxes; Dayton store scale; Golden Jet 400 outboard motor; wood water barrel; Pepsi 25 cent pop machine; Pepsi ice cooler; round

tool rack; counter top can opener; Military drafting table; croquet set; several qts new oil; several locker cabinets; feed tub; assortment used lumber; gas cans; new shovel handles; several shovels, other tools; Stihl gas weed eater; post hole diggers; hedge knife; scale beam; car horns; mole trap; bearings; 220 window heat & air unit; fishing reels & poles; ice auger; ½" drill; Skill saw; new 4.10x3.5x4 tires; wicks for smug pots; 150 lb. anvil; life jackets; plastic containers; horse shoes; portable air compressor; wash tub; buzz saw blade; draw bar; wood vice; automatic yard sprinkler on wheels; cream can; tree saw; coaster wagon; brass light fixtures; salesman projec-

tor; wild game call; Johnny West jeep; GI Joe houses; toys; wooden duck decoys; duck calls; picture frames; model T coils; electric motors; barrel stove kit; 2 wheel dolly; child's desk; electric flour grinder; 8' chopping block top work bench; propane bottle torches; 6' stock tank; 2 walking cultivator; 6' chicken netting; 40's hub caps; Model T parts; car trunk; sprinkling can; 2 recliners; upright freezer; automatic washer & dryer; 26" TV; stands; tables; deep fat fryer; Nordic Track ski machine; Webber grill; aluminum 10 gal cooking pots; assortment pots & pans; bedding; binoculars; assortment kitchen appliances; Tupperware; assortment of other items.

PETE BARCLAY ESTATE

Auction Conducted By
Thummel Real Estate & Auction LLC
Beloit & Concordia, Ks • 785-738-5933

GROW NATURE'S POWER PLANT EASTERN GAMAGRASS

Ideally suited for management intensive grazing systems.

Order Now for
Dormant
Plantings

- Excellent Quality
- High Tonnage
- Fast Regrowth
- Native Warm Season Perennial
- Widely Adapted & Flood Tolerant
- Improved Varieties: PETE & IUKA

CUSTOM PROCESSING and COMPETITIVE PRICES

Call 1-800-367-2879 and ask for our free color brochure.

Gamagrass Seed Company

70225 656 Avenue, Falls City, NE 68355 email us at: info@gamagrass.com

Briggs AUTO.COM

PHONE: 785-564-4092

Ask for Larry Ruthstrom

2003 CHEVY K-2500



Ext. Cab, leather, 4WD, 6.0L, full power,
75,000 miles. \$15,900

2007 CHEVY K-1500



Reg. Cab, 4x4, 5.3L, Full Power,
21,000 miles \$22,900

2008 DODGE RAM 2500



Mega Cab, 6.7 Diesel, Auto, 4WD
31,000 miles. \$36,900

2007 DODGE RAM 3500



4x4, 5.9L Diesel, Mega Cab
\$34,900

WHOLESALE FLEET OUTLET

BRIGGS FLEET/LEASE VEHICLES
4810 SKYWAY DR, MANHATTAN, KS

2006 CHEVY 5500



Crew Cab, Duramax, Allison, Tool Boxes,
Dump bed w/tarp. \$32,995

2008 CHEVY 1500



4x4, Auto, LS Trim, PW & PL
\$21,995

2004 GMC K-3500



Ext. Cab, Duramax, 4x4, SLE
\$15,995

2007 CHEVY 2500



Reg. Cab, 4WD, power windows & locks,
6.0L, 6,400 miles \$24,995

lruthstrom@briggsauto.com • www.briggsauto.com

GoBob Pipe & Steel Sales

GET YOUR CORRAL
MATERIALS NOW!



...BEFORE THE
PRICES GO BACK UP!

FOREVER
FEED BUNKS



5 BRANDS OF:
ULTIMATE
HAY HAULING
MACHINES

HAY CONSERVER BALE FEEDERS



USE 30% LESS HAY,
GUARANTEED!

NEW HAY TRAILERS



THE 2EZ



THE HAYROLL

PLEASE CALL FOR BROCHURES
gobobpipe.com (877) 851-2365

Miniature buggy builder active at age 90

ABILENE (AP)— Even at age 90, Reaves Armstrong still has the bug to build buggies.

Since 1991, the Abilene resident has built hundreds of detailed 19th century horse-drawn wagons in his home workshop, ranging from medicine wagons to black hearses.

No one will ever drive these wagons, however. Armstrong's buggies are miniatures, built to one-twelfth scale of the full-sized models.

Armstrong painstakingly recreates these classic buggies, wagons and carriages using period photographs and blueprints to produce precision-crafted replicas created from the finest cherry, maple or walnut wood and connected by up to 60 miniature brass screws, washers and nuts.

"There are no shortcuts and it doesn't get easier," Armstrong said. "Lucky I still have good eyesight."

A former commercial artist and retired art in-

structor at Salina's Vo-Tech (now Salina Area Technical School), Armstrong switched from brushes to jeweler's tools as he morphed from artist to craftsman.

For the past 20 years, he and his wife, Bonnie, have taken their miniature buggies to regional arts and craft shows and county fairs and sold them under their company banner, Armstrong Woodworks.

The collectible buggies and wagons come in 13 different models, including an ice wagon, medicine wagon, Studebaker doctor's buggy, surrey with a fringe on top, ice cream wagon, station wagon (a four-seat buggy), Texas buckboard, milk wagon, Ohio and Pennsylvania Amish buggies, a mail wagon with mail slots, a Jenny Lind carriage, a park carriage and an 1895 hearse, which has become a popular collectors item for area funeral directors.

All the buggies are built to the same uniform size and individually numbered. They range in price from

\$400 for a buckboard wagon to about \$1,200 for a hearse (which also can be embellished with the name of a specific funeral home on its glass-encased carriage).

Armstrong tends to work on at least two buggies at once and said each takes about five to six weeks to complete.

"I'll go down to the basement at 7 p.m. and start working and don't look up," he said. "When I do, three or four hours have passed."

AUCTION

TUESDAY, NOVEMBER 3 — 10:00 AM

300 E. 12th — EL DORADO, KANSAS

SELLING: Trucks, Heavy Trucks, Backhoes, Trailers, Crane, Boring Units, Compressors, Generators and a full line of equipment.

UNDERGROUND UTILITY COMPANY COMPLETE DISPERSAL

www.sundgren.com

SUNDGREN AUCTIONEERS

JOE SUNDGREN	JEREMY SUNDGREN	RICK REMSBERG
316-377-7112	316-377-0013	316-322-5391

AUCTION

SATURDAY, OCTOBER 24 — 10:00 AM

7120 SW 18TH, TOPEKA, KANSAS

Crystal lamps, Thomas Kinkade prints (several), (Thomas Ville) night stand, coffee table, end tables, dining table & 4 chairs, brass lamps, Tiffany style lamps, dresser w/mirror, 3 drawer chest, bookcase, card table & chairs, card table, queen size bed, several wall mirrors, computer desk & chair, candle toppers, oval end table, 3 drawer chest w/pullout, sofa & over stuffed chair, Stone Mountain purses, Seriphium angels, Hummels, CRYSTAL; Waterford, Precisa & Swarovski. (2) bar stools, patio furniture, yard art, Ethan Allen secretary, dropleaf table/2 chairs, night stand, coffee table, pillows, bedding, blankets, comforters, Kenmore unright freezer 18 cu. ft. (like new), portable clothing storage, bench, (2) wardrobes, exercise bike motorized, Kohler brass faucet (new), candlestick holders, purple pumpkin, pedestal cake plates, lots of dolls, porcelain, Madame Alexander, Marie Osmond (some new), Christmas decorations, Porterfield decorations. **LOTS OF MISCELLANEOUS ITEMS.**

NOTE: Lots of very nice Thomas Ville furniture, Thomas Kinkade prints & nice crystal. Your chance to purchase some very nice items.

TERMS: Cash or good check. All items removed day of auction. Not responsible for accidents. **RESTROOM. CONCESSIONS**

MARJIE MEYERS TRUST

RAINE AUCTION SERVICE
www.raineauction.com
AUCTIONEERS

Bill Raine 785-256-4439	Steve Murray 785-633-4610
-----------------------------------	-------------------------------------

STOP

Water from coming in your Basement or Grain Elevators

I will pump gel (Oilfield gel) under your floors and/or behind Your wall to fill any space or crevice where water can creep into your basement or grain elevators. All work guaranteed.

DON'T WAIT.

CALL BILL NICHOLS WATERPROOFING NOW

1-800-215-0537

8 a.m.-6 p.m. Monday thru Saturday

*Free Estimates-No Excavating * Don't wait until it floods again *

TRACTORS	JD 4430 JD 5425 Ferguson T020
NH TC30, 116 hrs. NH TC40/Ldr., 513 hrs. NH TN65, 4WD, Open NH TM135, Ldr. NH TS115A NH TL80 Ford 7810 w/boom mower Ford 7000 Ford TW20 Ford 4610 Ford 5000 IH 1586, 2WD Case STX325 Case MXM155 Case Puma 140 Case Puma 195 Case MX110/Ldr. Case MX120/Ldr. Case JX85 Case JX75 Cat MT285 JD 3020 JD 4630	INDUSTRIAL Bobcat S220 Bobcat S250 Bobcat S175 Bobcat 753 Bobcat T300 Bobcat T190 Bobcat 430 M.EX Bobcat 331 M.EX JD CT332 CTL Case 40XT Case 70XT Case 445CT NH LB75B TLB
	COMBINES & WAGONS NH CR960, FWD Case 2388, FWD
	PLANTERS & MISC. Kinze 3650 16/31 Kinze 3600 12R Spra-Coupe 220 REM 1026B Grain Vacs Kinze 450C Cart


Hesston Belt Buckles Are Here!

Hours Mon-Fri 8-5 • Sat. 8-3

Visit us at: www.earleytractor.com

816-632-7277

EARLEY TRACTOR
Cameron, MO



OnLine Real Estate AUCTION

2407 Osborne Terrace — OTTAWA, KANSAS

ON LINE BIDDING ONLY

Bidding opens October 21, 2009

Bidding Closes THURS., NOV. 5. 2009 1:00 PM

For complete pictures & bidding information go to website **www.dlwebb.com**

Completely remodeled American Four Square Farm House, Barns, Concrete Basketball Court, with 12 acres of land.

REAL ESTATE INFORMATION: This house was constructed in the early 1900's and is of brick and wood frame construction. There are 2,100 plus square feet of living space with four bedrooms, two bathrooms, large utility room, formal dining, sunroom, and spacious kitchen. There is exquisite walnut hardwood floors, staircase, and trim. All remodeled in 2009. Additionally a large front porch, full basement, and detached garage. Also there is a 40' x 100' pole barn, large concrete pad for full size basketball court, and other concrete pads for barn construction. The HVAC is new with a 90% efficiency unit. This is located on 12 acres of land with open land for pasture and timber for hunting. 2008 real estate taxes were \$1,610.14. This house and property is ready for your family and ownership. Bring the horses, livestock, kids, and be ready for the New Year.

Property open house and inspection Sunday October 25, 1:00 to 3:00 p.m. and Sunday Nov. 1, 1:00 to 3:00 p.m.

Online bidding closes Nov. 5, 2009 at 1:00 p.m.

AUCTIONEERS NOTE: Time to pick up and move to the country, or have a second home in the country in this restored four square house that is ready for your ownership. Log on, look, and bid. This property is ready for your family.

Auction arranged and conducted by Webb Realty

WEBB & ASSOCIATES STILWELL KS AUCTIONEERS & APPRAISERS	Dave Webb Stilwell, Kansas 913-681-8600 fax 913-681-6425 www.dlwebb.com	 
--	--	--

OnLine Real Estate AUCTION

Majestic Turn of the Century House

Designed by George Washburn

107 E. Peoria — PAOLA, KANSAS

Just two blocks east of the Square

ON LINE BIDDING ONLY

Bidding opens October 21, 2009

Bidding closes WED., NOV. 4, 2009, 1:00 PM

For complete pictures & bidding information go to website **www.dlwebb.com**

Majestic Turn of the Century House with Detached Garage, Detail Private Gardens & More.

REAL ESTATE INFORMATION: This stately turn of the century house was constructed in the early 1900's and contains 3,000 plus square feet of living space. There are four bedrooms and three baths. Fabulous kitchen with cherrywood cabinets and breakfast area, large family and entertaining rooms, refinished original hardwood floors, original woodwork, crown molding, pocket doors, leaded glass, chandeliers, cedar closets, and more. Full basement, new roof, detached garage with pass through garage doors, and finished overhead entertaining area. Private gardens, detail landscaping & fencing, spacious front porch. This house has been exquisitely refinished and is ready for your family, and ownership. 2008 Taxes were \$ 3,441.18. The lot contains 6,985 m.l. square feet. This is a one of a kind property.

Property open house and inspection, Sunday, October 25, 1:00 to 3:00p.m. and Sunday Nov. 1, 1:00 to 3:00 p.m.

Online bidding closes Wed., Nov. 4 at 1:00 p.m.

Auctioneers Note: All ready for the New Year in a historic neighborhood house. Log on, look, & bid, this one of a kind property is ready for your ownership.

Auction arranged and conducted by Webb Realty

WEBB & ASSOCIATES STILWELL KS AUCTIONEERS & APPRAISERS	Dave Webb Stilwell, Kansas 913-681-8600 fax 913-681-6425 www.dlwebb.com	 
--	--	--

ANTIQUE AUCTION

SATURDAY, OCTOBER 24 — 10:00 AM

Auction will be held in Kenwood Hall at the Saline Co. Expo Center 900 Greeley

SALINA, KANSAS

COLLECTABLES

See last week's Grass & Grain for complete listing.

Note: Wayne collected for many years, these were many of the special items he has collected.

WAYNE BERNEKING ESTATE

Auction Conducted By

Thummel Real Estate & Auction LLC

Beloit & Concordia, Ks • 785-738-5933

ABSOLUTE LAND AUCTION

TUESDAY, OCTOBER 27 — 7:00 PM

Auction to be held in the Madison Ballroom at the Downtown Ramada Inn located at 6th St. and Interstate 70. **TOPEKA, KS.**

SELLING APPROXIMATELY 360 ACRES IN DOUGLAS COUNTY, KANSAS JUST EAST OF BIG SPRINGS, KANSAS. 15 MINUTES WEST OF LAWRENCE AND 15 MINUTES EAST OF TOPEKA.

SELLING 5 SEPARATE TRACTS

ALL TRACTS SELL ABSOLUTE WITH A MINIMUM OPENING BID OF \$1,500.00 PER ACRE.

A 10% buyers premium will be added to the final bid per tract. Pease bid accordingly.

TRACT 1: 84 acres m/l. 1,480 ft. of frontage on US 40. Could be used for single family home. Has CRP contract. NOTE: Tract 1 and Tract 2 could be combined to make 1 contiguous parcel. Located just East of E. 200 Rd.

TRACT 2: 12 acres m/l. 900 ft. of frontage on US 40. Could be used for single family home. Has CRP contract. Because Tract 1 and 2 were divided in 1992, present day frontage requirements waived. Located just East of E 200 Rd.

TRACT 3: Complete 1/4 section. 160 acres m/l. located on the West side of E. 300 Road at the dead end. Rolling pasture and has CRP contract on few acres.

TRACT 4: 104 acres m/l. It has access off of US 40 on a 3 acres parcel with the balance being pasture with CRP contract located approximately 1/4 mile South of US 40. Great hunting area.

TRACT 5: 2 acre m/l building site located on the East side of E. 300 Road.

TERMS: 10% down the day of the auction with the balance due within 15 days. No surveys are available and none will be provided by the seller. Purchaser will be provided with title insurance from the seller. All taxes will be prorated to day of closing. Purchaser is responsible to have CRP payments transfer to his/her name after closing. For more details go to: **www.realestateauctions.net**

SANDERS AUCTIONS

Jim Sanders, Associate Broker/Auctioneer
785-271-0370 Office • 785-633-8578 Mobile
5120 SW 28th, Topeka, KS 66614
COLDWELL BANKER • 5120 SW 28th, Topeka, KS 66614
Griffith & Blair American Home

TIFFANY

CATTLE CO., INC

A Complete Cattle Feeding and Marketing Service

Grass Season Is Over Or Soon Will Be

Call Us To Best Manage Your Cattle Off Of Pasture. We can handle your cattle in the feedlot and/or assist you in marketing to the highest profitable advantage.

Formerly Black Diamond Feeders

With a 15,000 head capacity, Tiffany Cattle Company is large enough to have economics of scale but small enough to provide personal attention. Pen sizes range from 50 to 200 head. A computerized summary of feed, cattle processing, veterinary services and other costs are easily accessible on each pen of cattle.

PRODUCTION SERVICES

Objective is simply: Least Cost Per Pound of Gain!

Ration formulation and cost analysis, health program designed and maintained by veterinarian, special pens and attention to sick animals, feed financing, and cattle purchasing available.

MARKETING SERVICES

Marketing finished cattle is top priority at Tiffany Cattle Company. You have the option of selling on the cash market, forward contracting or grid pricing through US Premium Beef.

- Risk management handled by Tiffany Cattle Company
- Locked commodity prices
- Complete profit/loss statement for each pen
- All marketing decisions discussed with and approved by cattle owner
- Reward for your efforts in producing a quality product by selling your cattle on an industry competitive grid


www.uspb.com

1333 S. 2500 Road, Herington, KS 67449

Shawn Tiffany, Owner/Manager: 785-229-2902

Shane Tiffany, Owner/Manager: 785-466-6529

Doug Laue, Co-Owner

Office: 785-258-3721 • tiffanycaco@fhnd.net

Armstrong's son, Jerry, said he is amazed his father can still do such painstakingly detailed craft work at the age of 90.

"We thought that when he retired, he'd be a painter," Jerry said. "Instead, he became what he called a 'wood butcher.' He's always setting new challenges for himself, adding details to make them more complicated."

For Armstrong, the buggy bug started nearly more than 70 years ago. At age 18, the Detroit, Mich., native worked for three Swedish cabinetmakers who built buggies from scratch in their spare time.

"They were true craftsmen," Armstrong said. "All I did was sweep for them, but being around them I learned to do it, too."

Armstrong didn't see much of a future in buggy building, so during World War II he decided to become a commercial artist while in the U.S. Army and stationed at Fort Riley. After his discharge, he worked as commercial artist and designer in the Detroit area.

Armstrong met Bonnie at a USO dance at Fort Riley. After marrying and living in Detroit for the better part of two decades, the couple decided to relocate to Abilene, where Armstrong taught commercial art for 22 years at the Salina vo-tech.

They've have been married 61 years.

"He can't get along without me," said Bonnie, 86. "He doesn't know that yet."

After Armstrong retired in 1989, he decided to put drawing aside and start

crafting buggies and wagons, something he'd always wanted to take up again.

"I knew if I was going to do this again, I'd better have a lot of patience," he said.

Armstrong builds each new style of buggy or wagon by first building a prototype (or first model). Jigs are constructed from the prototype to ensure precise fit and uniformity when building subsequent models.

All the vehicles are cut from maple, cherry or walnut and feature handmade wheels with 12 to 16 spokes, hinged doors, ribbed roofs,

compartment lids, spring suspension and workable steering wheels. Seats and interiors often are upholstered in velvet or leather.

Armstrong avoids using glues to attach parts — each section of a wagon is connected by up to 60 nails, brass screws, washers and nuts that Armstrong inserts with tiny jeweler's instruments.

The 1895 hearse probably is the most complicated model, Armstrong said. It has a dark oak body, a brass undercarriage, 16-spoke cherry wheels, two-hitch

suspension, brass bushings, lanterns on each side of the driver's seat, curtains on the side windows, leather upholstery, hinged doors and brass floor rollers inside the coach for the coffin (not included).

Bonnie Armstrong said she doesn't mind the hours her husband spends in the basement working on his craft.

"I do my thing, and he does his," she said. "I just put him downstairs and lock the door. I give him a cookie now and then."

Armstrong's buggies have

been shipped to customers throughout the world, and for years he and Bonnie had a regular booth at Salina's Smoky Hill River Festival.

"I didn't even know there was a market for this, then we went to the river festival and it went over big there," Armstrong said. "We've missed the festival for the last couple of years. We need to get back."

The Armstrongs still visit several fairs and craft shows a year, mostly during summer, where they have built a loyal customer base of collectors.

ESTATE AUCTION

SATURDAY, OCTOBER 24 — 9:30 AM
WAKEFIELD, KANSAS 67487

DIRECTIONS: Due to death we will sell the following items at public auction at the residence located at 508 2nd Street in the southwest corner of Wakefield, Kansas.

FURNITURE & APPLIANCES, ANTIQUES, COLLECTIBLES, GLASSWARE, LARGE BOTTLE COLLECTION OF OVER 400 PIECES; TOYS, BOOKS, CLOTH, SMALLS, GLASS, HOUSEHOLD, SHOP, OUTDOOR ITEMS, FISHING SUPPLIES.

ADDED ITEMS: (from the Union State Bank, Clay Center, KS): 6 1/2' wainscot breakfront cabinet w/cubby holes, very nice; 28"x28"x5 1/2' tall unique oak cabinet w/many large shallow drawers, very nice; 7 1/2' walnut table w/leaf, brand new; & other pieces.

Go to kretzauctions.com for a large list or to go claycenter.com

TERMS: Cash or good check day of sale. Not responsible for accidents.
CLERK: Union State Bank, 701 5th, Clay Center, Ks. 67432
LUNCH: Bonnie Taylor

LORRAINE COWELL FAMILY TRUST

Auction conducted by:

Kretz, Hauserman, Bloom Auction Service

Greg: 785-926-4422

Gail: 785-632-3062

Chad: 785-632-5824

Cell: 785-630-0701

Cell: 785-447-0686

Cell: 785-632-0846

ATCHISON COUNTY LAND AUCTION

SATURDAY, NOVEMBER 14 — 10:00 AM

Land Will Be Sold At The Velma Houts Building On Hwy 136,

East Edge of **ROCKPORT, MISSOURI**

249 ACRES M/L OF ROLLING UPLAND FARM GROUND W/224+ TILLABLE ACRES

Sec. 10, Twp 65N, Rge 40W (Formerly Hog Creek Inc.)

Signs Will Be Posted

This is an excellent producing row crop property that is located on the NW edge of Tarkio, Mo. w/access points from 190th St, 59 Hwy, and Rt AA.

OWNERS: LEE & ANGELICA HARDY

Visit our website for full details and pictures:
www.showalterauctions.com

Auction Conducted And Managed By

THE SHOWALTER AUCTION & REALTY CO.

Abie & Jonathan Showalter: 660-683-5438

Ronnie Flint: 660-442-5399

Email: Rflint@Hughes.Net



Reality Check.

In recent years many commercial producers have found themselves actually 'linebreeding' to some effect—using basically the same bloodlines and narrowing the genetic diversity within their cow herds. While this adds consistency to some traits, it also opens up potential problems in fertility, vigor, resistance to disease, disposition, structure, performance, etc. Many times this is a slow effect, not immediately noticeable, but bottom-line profit margins can quickly shrink when problem traits are unintentionally multiplied.

Fink Beef Genetics does not single-trait select, but try to balance all traits. We provide options and choices for customers ranging from diversity within our two breeds to planned crossbreeding systems.

Each customer knows their operation better than anyone—we simply provide some of the pieces to help make it more profitable. We do not linebreed our thoughts, rather, we look long-term and 'outside the box' — a mission we are constantly on.

FINK CHAROLAIS BULLS

- Use for terminal cross (pounds, vigor, feedlot & packer friendly)
- Use to make 'smoky' females out of moderate-framed Fink Charolais bulls. Many ranches are.
- Bred for calving ease, pounds & carcass—emphasis on marbling.
- Excellent for improved yield grades & % of lean retail cuts—still with great marbling.

FINK ANGUS BULLS

- Replacement females #1 goal with least amount of problems.
- Recommend for 1st-calf heifers when so designated.
- We avoid terminal-type angus (high \$B, excessive yearling weights, large course bone)
- Carcass that cuts with anyone.
- AM, NH-free genetics.

FINK COMPOSITE BULLS

- Increase yield grade, still excellent marbling on high-base Angus cows.
- Ribeye areas improved.
- Use to make replacements also—best of both breeds.
- Great for producers feeding their own cattle for carcass premiums.

Fink Beef Genetics Annual Bull Sale

260 Bulls Sell

Wednesday, October 28

12:30 p.m.



150 Angus 100 Charolais 10 Composite
at the Fink Beef Genetics Sale Facility, Randolph, Kansas
Complete BSE exams — Ultrasound — Best guarantees *anywhere*

Please contact us for a sale book. We appreciate your interest.



Beef Genetics

Megan, Lori & Galen Fink

15523 Tuttle Creek Boulevard, Randolph, Kansas 66554

Ph/Fax: 785-293-5106

Galen's cell: 785-532-9936

Lori's cell: 785-532-8171

Email: finkbull1@twinnvalley.net

Website: www.finkbeefgenetics.com

Commercial Services Representatives

Barrett Broadie: 620-635-6128

Gene Barrett: 785-224-8509

Florida Representatives

Charles Robert Stevens: 863-781-1410

Tommy Mann: 863-673-1798

GUN, COIN & ESTATE AUCTION

SATURDAY, OCTOBER 24 — 9:30 AM

LOCATION: Sterl Hall, (heated building), 619 N. Rogers,
ABILENE, KANSAS

GUNS & COINS SELL AT 11:00 AM



HAND GUNS: Smith and Wesson collection: Stainless Mod. 500 stainless .50 cal. Mag. w/8 3/8 inch barrel, hard case and compensators; S&W Mod 629 .44 Mag 8 3/8 barrel; S&W Mod. 27 .357 Mag. 8 3/8-in. barrel; S&W Mod. .57 .41 Mag 8 3/8 in. barrel; S&W Mod. 25-5 .45 long Colt; S&W Mod. 17 .22 8 3/8 inch barrel; (2)S&W Mod. 686 Kansas Highway Patrol (KHP) .357 Mag 4-inch stainless; S & W Mod. 25-5 .45 long colt; S&W Mod. 17 .22 8 3/8-in. barrel; S&W KHP Mod. 66-1 .357 mag stainless; S&W Mod. 66-1 .357 Mag. 2 1/2 in. stainless; Colt King Cobra .357 mag.; Charles Daly 9mm auto (Browning Hi-Power copy); IAI .380 auto stainless; replica 1851 .44 cap and ball; Encon 9mm pistol; Llama .45 auto; Ruger New Mod. .45 cal. Blackhawk; FAP .44 cal. Cap & ball revolver (engraved); Walther PPK .380 NIB; Uberti Remington 1875 Outlaw .45 long Colt; **RIFLES:** Pair of Thompson carbines .45 auto and 22LR with matching serial numbers w/50 rd. drum and stick mags; Colt law enforcement M4 AR-15 NIB .223; Rock River AR-15 NIB .223; Bushmaster CAR-15 .223 cal. w/3 position stock; Ruger Mini-14 .223 auto; Ruger No. 3 .223; Inland .30 M-1 carbine; Remington Mohawk 10-C .22 auto & mod 66 auto; Savage Mod. 99 .300 Savage lever; SKS w/syn stock; 1917 Savage NRA match .22 bolt; Enfield .303 jungle carbine; Enfield .303 rifle; Winchester Mod. 90 .22 short; Remington Mod. 742 30-06 auto; Henry .22 lever action; Cabela .45 cal. black Powder rifle w/double set triggers. **SHOTGUNS:** Parker Brothers 12-ga. side-by-side twist steel barrel; Ducks Unlimited Tristar Viper 12-ga. auto NIB; Remington 870 special field 20-ga. pump; Weatherby Onion O/U 12-ga.; Ted Williams Mod. 200 20-ga. 3-in. pump; Remington Mod. 1100 12-ga. auto; FIE 12-ga. side by side; 2-870 Remington 12-ga. pumps; Kassnhr .410 side by side; Kassnhr 12-ga. side by side; 2 Marlin 12-ga. bolt Goose guns; Remington Mod. 48 12-ga. auto with slug sights 20-in. barrel; **BERRETA A303** 12-ga. auto w/vent rib; Winchester Mod. 97 12-ga. pump; many old single shot shotguns and wall hangers.

AMMO, RELOADING EQUIPMENT & MISCELLANEOUS: Hornady reloading dies .500

S&W mag.; .41 mag. .44 mag. .357 mag., 25-35 Win.; Hornady shell plate #44, #30, #2, #29; (approx. 500) .500 S&W mag; new brass; approx. 500 bullets; 400 reloaded .44 mag; 300 reloaded .357 mag; SKS mags, grips & other misc. items; rifle & pistol zipper cases; conceal and carry holster day planner; lighted 4 gun solid oak cabinet w/smoked glass.

COINS AND GOLD JEWELRY: 1821-1924 50 Peso gold coin necklace w/14Kchain 1.25 ou. Of gold; 14K gold rope twist bracelet w/9 2.5 Peso gold coins; pr. 14K gold 2.5 Peso earrings; Note: necklace, bracelet & earrings match; 1/10 oz., Maple Leaf necklace w/14K bezel; approx. 50 Morgan and Peace dollars; (2) 2 1/2 dollar Indian head gold (1912 & 1915) pieces; 1878 2 1/2 gold piece; Walking Lib. And Franklin 1/2's; Mercury & Roosevelt dimes; wheat pennies; roll of 1964 Jefferson nickels; IKE dollar's; Washington quarters and other lots of coin silver and misc. coins; large 1913 \$10.00 bill (fair); Kansas Livestock Assoc. silver belt buckle.

ANTIQUES: Oak commode w/serpentine drawer & towel bar; oak rocker w/arms; 1950 chrome dinette table; John Deere yardstick; linens; watering can; Corona typewriter; Christmas bubble lights; Lawrence Welk & Alice metal tray; games; Audion wood cabinet small chord organ; other antiques.

HOUSEHOLD: (9:30 a.m.) Small Meilink steel safe w/combination 20"x16"x16"; Smith Corona "Memory Correct" electric typewriter (like new); American Home sewing machine & table; Sharp Carosel II microwave; Westinghouse elect. roaster; small kitchen appliances & kitchenwares; Corningware hot plate; 2 card table sets; metal wardrobe; Health-O-Meter Doctors scale; hampers; sewing notions & material; yarn; tablecloths; towels; bedding; 12 pl. set Sterling Co. "Springtime" china; 6-pl. set Kensington china England; Alum folding cot; Christmas decorations; old Lawn Boy push mower; pitch fork & spade; Sears 16" hedge trimmer; other tools and misc.: **FURNITURE & FREEZER:** 3-pc. solid maple 3-pc. bedroom set w/full size mattress set; Dearborn "Provincetown" solid maple china hutch; blonde oak wardrobe; mauve & brown recliners; brown & tan plaid hide-a-bed; other furniture; Coronado 15.5-CF upright freezer.

AUCTION NOTE: Very nice selection of firearms. Gold & Silver coins. Will sell household items first. For a complete listing & photos go to website www.ksallink.com and click on Marketplace and then auctions. Lunch available. Sales tax will be assessed. No buyers premium. Statements made day of auction take precedence over all printed material.

TERMS: Cash or good check. Photo ID Required.

LOIS ORTH ESTATE AND OTHERS

REYNOLDS MUGLER GEIST Auction Service

P.O. Box 273

102 N. Buckeye

Abilene, Kansas

RANDY REYNOLDS

PAUL GEIST

HAROLD MUGLER

263-3394—Home Ph.

263-2545

632-4994

785-263-5627, Mobile

785-263-5747, Mobile

THE PICKET LINE

BY RALPH GALEANO

Pickpocket

She's a beautiful, new penny sorrel mare. Miss Scarlet Olena has royal bloodlines and the looks and grace to turn any horseman's head. The lady is also a thief, gate opener and latch picker. She's untrustworthy and will steal you blind if you give her the chance. She can find her way into anything no matter how you try to out fox her. Born and bred in Mon-

tana, Scarlet is smart, tough and sometimes humble. The humble part is a sham. The girl knows when to play on your emotions and can tug your heartstrings when she needs to further her own comfort with extra feed or a cozy barn to wait out a storm.

She can pick your pocket while you're trimmin' her hooves. Your wallet or ban-

dana just ain't safe. She'll rob you and drop her prize on the ground and either stomp on it or cover it with fertilizer. Simple latches on gates or barn doors just don't hack it with her around. She's a show off and will stand and nibble or pull at a latch for hours while her pasture mates stand around and cheer her on. I have to put a padlock on feed room

doors to keep her and her friends out.

If Scarlet is my saddle horse for the day, I know I better watch her like a hawk. She expects attention. Insult her by leaving her tied with a saddle on her back for any length of time, and guaranteed, she will extract revenge. In the early days of her training, I was loping her in circles around the arena when a friend pulled up in his Jeep. I tied the girl to the fence with a few wraps around a post. Loose, so if something spooked her she could pull away and not damage her mouth or the headgear. I walked over to see what long-winded John wanted.

Trout were in the river and hitting on a special fly

he tied. It was a long story and occasionally I glanced over to see how Scarlet was doing tied to the fence. She seemed antsy and had turned till her near side was against the fence. She was making strange back and forth motions as if trying to scratch her ribs. I tuned out John's fish story and watched as her Royal Highness stopped

wiggling and took a few sideways steps away from the fence. She now had my full attention because the fence was beginning to stretch with her! When she had everything just right, she lunged around in a tight half-circle, leaving my stirrup with the fender attached and ripped loose from the saddle tree, hooked to the fence

CENTRAL KANSAS
AG AVIATION
STEVE DONOVAN
Cellular 785-366-0513 or Office 785-258-3649
P.O. Box 246 Herington, KS 67449
Located east of Herington at the Former Military Airfield

Place Security Back Into Towing
Myronized Truck Works
35,000-lb. GTW
DROP 'N LOCKS
• Luverne Truck Equipment
• DewEze Hay Handling
• Flat Beds
• Exhaust Work
Centralia, KS
785-857-3581

Kawasaki Let the good times roll.
Kirby's SUPERSPORTS
NO EXTRA FEES - NO EXTRA FEES - NO EXTRA FEES - NO EXTRA FEES - NO EXTRA FEES - NO EXTRA FEES
MULE™ BLOWOUT SALE!
NEW 2009 600 MULE™ MSRP \$6,299 Blow Out Price \$5,799
NEW 2007 3000 MULE™ MSRP \$7,499 Blow Out Price \$6,499
NEW 2008 3010 MULE™ 4X4 MSRP \$8,799 Blow Out Price \$7,499
NEW 2009 4010 MULE™ Trans 4x4. MSRP \$9,599 Blow Out Price \$9,199
NEW 2009 4010 MULE™ Diesel, 4x4. MSRP \$10,599 Blow Out Price \$9,299
NEW 2009 4010 MULE™ 4x4. MSRP \$9,499 Blow Out Price \$8,399
www.cheapercycles.com
TOLL FREE 1-800-279-3651 TOLL FREE
KAWASAKI CARES: Warning: ATVs can be hazardous to operate. For your safety, always wear a helmet, eye protection, and protective clothing. Never carry a passenger. Never ride under the influence of drugs or alcohol. Never ride on public roads or pavement. Avoid excessive speeds and stunt driving. Be extra careful on difficult terrain. Kawasaki KFX 50 is recommended for use only by persons 12 and older, and the KFX 80 is recommended for use only by persons 16 and older. All children under 16 riding ATVs should always have direct adult supervision. Kawasaki ATVs with engines of 90cc and above are recommended for use only by persons 16 years of age or older. Kawasaki also recommends that all ATV riders take a training course. For more information, see your dealer, or call the ATV Safety Institute at 1-800-887-2887. ©2008 Kawasaki Motors Corp., U.S.A.

NC NEWTON CROUCH
NC SERIES FERTILIZER SPREADERS
MODEL 47 TANDEM SPREADER "SPREADIT"
NC 6000 Fertilizer Only
SCHABEN INDUSTRIES
239 S. Meridian, Newton, KS
800-394-7662
316-283-4444
Features On Model 47...
• Capacity 233 cubic foot - 8 ton maximum load
• Fertilizer and lime
• Most uniform spread pattern in the industry - the one that all others aspire to!
• Tractor hydraulic four hose system (dual remote)
• Hydraulic drive wheel engagement with cylinder and hydraulic dual 24" spinners
• Conveyor - 16 or 24 inches, stainless, clinched
• Fertilizer and lime sprockets, one chain combo - 12/54, 22/44
• Trailer - tube frame, tandem axle, powder coat paint, blue
• Tires - 19L x 16.1 - 10 ply
• Hull - 10 x 99", bolt-on, 304 stainless steel
Call For Sizes & Options Available

ANTIQUES • COLLECTIBLES • PRIMITIVES AUCTION
SATURDAY, OCTOBER 24 — 9:33 AM
LOCATION: PAGEL REALTY & AUCTION FACILITY
North Hwy. 75, HOLTON, KANSAS
GLASSWARE: Depression - cranberry, amber & clear; Blue Willow asst. pcs.; 20 Tobys, small to 4"; Vases; Butter Dishes; Cream & Sugars incl. 2 Shelly sets; Swan Pin Dish; Bowls, German, Noritake, Bavarian, Limoges; Pitchers; Cake Plates; Westmoreland Lamp; Currier & Ives; 8 Stemmed Sherberts, red to clear; Collector Plates; 6 Egg Cups; Platters; Insulators; Fire King Dishes; Set of 6 Bingo Glasses; 10 Shelly Trays; Shelly Bowl; Shelly Tureen; 7 Shelly Cake Plates; Ashtrays; Limited Edition Baily's Yum Cup; 3 Mustard Pots w/lids & spoons; Dressing Table Sets; Many other glass pieces not listed.
COLLECTIBLE MISCELLANEOUS: Michael Jackson Record Player; Graniteware & Enamelware; American Kitchen Clocks & Anniversary Clock & others; Spoon Collection w/wall holder; Oil Lamps & Lanterns; Shadow Box full of Small Figurines; Iron Match Holder; Quadruple Silver Plate; Bells; Robin Hood Lunchbox; Horse Figurines; 2 Framed Advertising Post Cards & other Post Cards; Stoneware & Crocks, jars & bowls; Old Tins; Player Piano Rolls; Brass Candlesticks & many others; Framed Pictures & Prints; Old Paper School Books & 43 Royal Family Books & Boxes of other Books; Vintage Jewelry; Advertising Memorabilia; Dale Evans Adv. Pin; 9 Old Magazines; Wedding Barbie in a Barbie Case; John Wayne Doll; Appr. 50 Marbles; Metal & Wooden Toy Trucks; 3 Stained/Leaded Glass Windows; 6 Oil Company Tins; Mobil Oil Pourer; 2-5 Gal. Mobil Oil Cans; 2 Coleman Table Lamps & other Lamps; RC Pop Crate; Case w 24 Red Rock Cola Bottles, Topeka; 2 Old Irons; 46 Mini Liquor Bottles & 133 Beer Bottles; 4 Wooden Trays; 1930's Navy Gunner Book; Shell Oil Box; Neon Coors Sign, damaged; 3 Washboards; Metal Trunk; 3 Painted Cupboard Bins; Wooden Golf Club; Sewing Box; 4 Boxes of Old 78 Records; 3 Gramophones; Batman & Superman Book; 6
FURNITURE: Oak Table & 6 Matching chairs, 1 leaf; 3 Door Mahogany Wardrobe; Mahogany Bureau Bookcase; Oak 4 Stack Bookcase; Hon-eyuckle Dropfront Desk; Tea Trooley, Nz8-184 Pine Table; 42" Round Oak Table & an Oak Table Top; Lamps; Mission Oak Chair; Corner Section w/Leaded Glass Door; Childs' Chair; School Desk & Chairs; Rod Iron Telephone Table; 2 Unrestored Player Pianos; Metal Food Safe; Oak Switch Board; 3 Folding Tables & 6-8 ft. Tables.
MISCELLANEOUS: 35 ft. Enclosed Trailer, for storage; Companion 10" Table Saw, new; Sears Small Air Compressor; 2 Furniture Carts; Chicago 3500 Gas Generator; 3 Wheel Barrel Plant Holders; Part of Copper Fireplace Fender; Offi ce Chair; 2 Suitcases; Metal Display Rack; Sewing Machine; Old Adding Machine; Light Fixture; 3 Floor Dollies; Microwave; Baskets; Cameras; Old Floor Jack; 3 Sythes; 3 Saws; Miter Saw; Hoes; Pick; Rakes; Shovel; Stomper; Slasher; Blow Torch; Dehornor; Square; Trowel; Hand Tools; Hatchets; Canning Jars; Many other items too numerous to mention.
Auctioneer's Note: This is just a partial sale bill-we have a building full! Pat McClintock was the previous owner of The Brown Shutter in Holton & a collector. Included in the auction also is the owner of the 35 ft. Enclosed Trailer's antique collectibles & primitives who has moved from the area. Very few household items. Many collectibles & primitives not listed, but lots of pictures on our website, www.pagelrealtyauction.com. Hope you can plan to spend the day with us-Something for everyone!! Thanks, Wayne
Cash or good check. Announcements day of auction take precedence over printed material. Not responsible for accidents or thefts.
Lots of pictures on our Website:
www.pagelrealtyauction.com
PAT McCLINTOCK ESTATE, etal
Auction Conducted by:
United Country
Pagel, Inc. Realty & Auction
Wayne Pagel, CAI Auctioneer, 785-364-7304
Aaron Watkins, Auctioneer 785-305-1404
Beth Pagel, Broker 785-364-5892.

where she had carefully tangled it in the boards and wire. Never once tightening the reins or tugging on the bit.

When I work young colts I take my eyeglasses off and place them in the bottom of the water trough in a corral near the tack room. Just in case the unexpected happens, they won't get broken. After riding Scarlet one day, I brought her back to the corral, unsaddled her and let her stand idle while I saddled another colt and led him to the arena for some schooling.

When I finished with the horses, I went to retrieve my glasses from the bot-

tom of the trough. They weren't there. Maybe I didn't put them there this time, I thought. I searched the barn and all the shelves in the tack room. My wife came out and helped me look. No eyeglasses. We couldn't find them anywhere. I looked at Scarlet. She was staring at me with beautiful brown eyes. She looked guilty. The eyes of a thief, I thought.

I walked back to the water trough and searched the muddy ground, and there stomped to bits, were the remains of my only pair of glasses. Miss Scarlet had deftly plucked them from the bottom of the trough, then

dropped and stomped them into little pieces. I was mad! I picked up the pieces and showed them to her. I threatened her and said I was through. She looked humiliated. "I'm not putting up with you no more. I'm selling you. Pull your tricks on somebody else!" I said. The pickpocket nickered and rubbed her muzzle against the hand holding the dead glasses. She managed to convince me she was sorry. That was two years ago, and like a fool, I'm still feeding her. I just never take my eye off Scarlet when she's my saddle horse. If I do, I know she'll make me pay.

Man pleads guilty in cattle fraud scheme

TOPEKA (AP) — A 58-year-old Topeka area man has pleaded guilty to charges stemming from a cattle fraud scheme.

U.S. Attorney Lanny Welch said last week that Dennis Stebbins of Overbrook pleaded guilty to one count of conspiracy to commit bank fraud and money laundering.

Stebbins admitted to defrauding the owners of J Bar Ranch in Jefferson

County from 2003 to 2008 by inflating the average weight and cost of the cattle he bought for the ranch. Prosecutors said he also falsely claimed that the animals had been examined by a veterinarian.

A sentencing date was not announced. Stebbins faces a maximum penalty of 30 years in federal prison and a fine up to \$1 million on the conspiracy charge.

GUN & SPORTING GOODS AUCTION

SATURDAY, OCTOBER 24 — 9:30 AM

4H Building, Marion Co. Fairgrounds, HILLSBORO, KANSAS

ORDER OF SALE: Selling items belonging to the late Don Bezdek first, then fishing equipment, misc. & gun accessories. Guns will begin to sell early afternoon, approx. 1:00pm.

NOTE: Don Bezdek was well known in the area for doing boat repair/maintenance. This sale includes his tools, repair supplies & parts from his shop.

BOAT REPAIR TOOLS, PARTS & ACCESSORIES, SHOP TOOLS, OUTDOOR GEAR

Central Machinery 12 spd. drill/mill machine on rolling cart; Stack-on rolling tool chest; Floor jack; ¾" air impact; Elect. Riveter; Rivets; DeWalt chop saw; Parts cleaner w/elect. pump; Makita 4" grinder; 6" grinder; C.P. air sander; Makita cordless drill; Belt sander; Jig saw; C.P. air impact; 3/8 air ratchet; Air drills & chisel; Welding clamps; Snap ring pliers; Torque wrenches; Honing tools; Slide hammers; Gear pullers; PVC cutter; Com-pressure gauges; Electrical testers; Ignition analyzer; Sleeve pullers; Bolt cutter; Tap & die sets; Easy outs; Craftsman

router; Belt/disc sander; Craftsman power saw; Elect. chain saw sharpener; Craftsman 16" scroll saw; Paint gun; Bottle jacks; Vise grips; C clamps; ¼", ½", ¾" socket set; Soldering gun; 2) Elect. staple guns; 1 ½ hp. elect. motor; T handle hex key; Chop-rite large meat grinder w/elect. motor; Stainless pans & kettles; Skinning knives; Wash tubs; Sausage stuffer; Large & small meat saws; Pop up tent; 2) Small tri-pods; 2-way radios; CB antennas; Used fish locators; Gun cleaning supplies; Hard & soft cases; Duffle bag; Vortex 13.5x17 pitch propeller (new); Engine Central assemblies; Eagle fish finder; Loranca portable fish finder; Stevens tach & dwell meter; Starter motors; Seat pedestal; Trailer

hubs; Trailer parts; Numerous used pumps (small to large); Tow straps; Bolt bins w/bolts, etc.; Gas tanks; Boat engine stand; Lots & lots of new & used repair parts (several racks full) incl. starters, carburetors, filters, primer bulbs, fuel hoses, elect. parts & switches, drain plugs, coils, paints, grease, elect. fuel gauges, motor sheer pins, reflectors, boat engine parts, lots of gaskets, ohm meter, timing light, O rings, starters, filters, carburetor kits; New power packs, spark plugs, wiring, starters, motor power tilt & trim; Assorted boat engine repair tools; Service manuals & parts/repair manuals for Mariner, Johnson, Evinrude, Mercury, etc.

DON BEZDEK ESTATE

SCOPES, RELOADING, BOAT, CAMPING, MISC. OUTDOOR

New BSA Platinum 24x44mm rifle scope; New Simmons Whitetail Classic 6.5-20x50mm wide angle, w/AO, Triplex reticle, matte finish; New Simmons Whitetail Classic 6.5-20x50 mm wide angle w/AO, mil dot reticle, matte finish; 4x30, 3x9 scopes; Adjustable rifle shooting bench; RCBS dies for .222, .221 fireball, 7.62x39, 22-250; Lee & Redding powder scales; 1200+ rounds 7.62x39; Misc. round 7.62x25, .17, .22 mag, .222 rem, .221 fireball, 9mm, 22-250; Fishing rods & reels; Lantern; Deer cam; Misc. rifle brls; Guns cases; Reloading shells & brass; Water Scamp 2-seat boat w/folding seats & anchor; Mina Kola turbo 65 5 spd. 36# thrust trolling motor; Eagle Fish ID depth finder; Spalding 12x9 cabin dome tent; Coleman 2-burner gas cook stove; Rifleman magazines; Outdoor books; Women's golf club set; 2) Ken Smith woods; Misc. golf clubs & golf sets, golf balls, etc.

GUNS/BOWS (Begin selling approx. 1:00pm)

Lot 1: Westernfield 550, 12 ga. pump, 2 ¾" & 3" ch; Lot 2: Armscor 1600R .22 long rifle, semi-auto, NIB, AP216862; Lot 3: Carcano Sporter WWII Italian, bolt action; Lot 4: Sears 101 20 ga. break action, 3" ch; Lot 5: Remington Fieldmaster 121 .22 pump; Lot 6: Long Tom single shot shot gun; Lot 7: Seavia 622 rifled .22 air rifle, made in Czech; Lot 8: Wards Westernfield 36D bolt action, single shot .22; Lot 9: Daisy .177 pellet & BB gun; Lot 10: Remington 870 Wingmaster 12 ga. 2 ¾"; Lot 11: Waltham single shot 20 ga.; Lot 12: Winchester 37 single shot 16 ga. 2 ¾"; Lot 13: Winchester 67 .22 S.L.L.R., bolt action; Lot 14: JC Higgins 1011 94C, 20 ga., 2 ¾", single shot; Lot 15: Winchester 1890 .22 short pump, hex brl; Lot 16: Stevens 12 ga. single shot; Lot 17: Remington Magnum 870 Wingmaster 12 ga. 3"; Lot 17B: Smith & Wesson old

revolver; Lot 18: M44 Russian 7.62x54R, w/bayonet; Lot 19: New Haven 85-B 20 ga. bolt action; Lot 20: Westernfield SB 100B, break action, 3" 12 ga; Lot 21: British Bulldog revolver; Lot 22: H&R revolver; Lot 23: Remington 700 30-06, bolt action, like new; Lot 24: Remington 700 .243 bolt action rifle, hvy brl, w/Simmons 3-10x44 wide angle scope; Lot 25: Mossberg 46B .22 bolt action, S.L.L.R.; Lot 26: Remington 710 300 Win mag, bolt action, like new, w/Bushnell 3x9 scope; Lot 27: Ithaca 49 .22 lever action single shot; Lot 28: Mauser 98 7mm 7/57, w/4-12x44 wide angle scope; Lot 29: Iver Johnson Cadet .22 mag. Revolver; Lot 30: Ruger P94 .40 auto pistol w/box & extra clips; Lot 31: Taurus Tracker .22 LR revolver (7 shot); Lot 32: Colt Officer's Mod. 38 revolver, hvy brl; Lot 33: Interarms Marks X 30-06 bolt action; Lot 34: Remington 715 7mm-08, bolt action, NIB; Lot 35: Mossberg 377 Plinkster .22 semi-auto; Lot 36: Mossberg 600AT 12 ga. pump 2 ¾" & 3" ch. C-Lect choke; Lot 37: US Revolver .32; Lot 38: US Revolver .38; Lot 39: Iberia (Hi-Point Co.) .40 S&W semi-auto, extra clip; Lot 40: Remington 710 .270 win, bolt action (NIB) w/Bushnell 3x9 scope; Lot 41: Stevens M 200 .243 bolt action, NIB; Lot 42: Universal 256 Ferret; Lot 43: Savage 93R17 .17 HMR bolt action, hvy stainless brl, thumb hole stock, w/Tasco 3x9 scope; Lot 44: Savage 340D .222 bolt action, w/scope; Lot 45: Winchester 94 30-30, lever action, RCMP Cent. 1873-1973.MP; Lot 46: Walther G22 Bullpup .22 semi-auto rifle (left handed), w/Tasco scope & case; Lot 47: Beretta Cx4 Storm 9mm semi-auto rifle, w/BSA scope & case, 3 magazines; Lot 48: Hi-Point 995 9mm carbine, semi-auto rifle, w/3x9x32 scope & laser; Lot 49: Savage 111 22-250 bolt action w/bi-pod, sling & BSA 8x32 scope; Lot 50: SKS Yugo 7.62x39 w/bi-pod & 3x9 scope; Lot 51: Inland 1945 .30 carbine, semi-auto rifle, w/modern Russian stock & orig. wood stock, 3x9 scope & laser; Lot

52: SKS Chinese 7.62x39, 3x12x40 scope, bi-pod; Lot 53: Thompson Center Contender .218B pistol w/Weaver 4x8 scope; Lot 54: Thompson Center Contender .222 Rem pistol, left & right grips; Lot 55: TC .218B barrel w/scope; Lot 56: TC .221 fireball brl w/scope; Lot 57: Ruger new mod. 22 single 6 revolver w/scope & extra .22 mag cyl; Lot 58: Heritage Rough Rider .17 revolver; Lot 59: Interarms Firestar 9mm semi-auto; Lot 60: Norinco 54 7.62x25 semi-auto; Lot 61: Ruger Mark II Target .22 LR, semi-auto; Lot 62: Jennings Firearms J-22 .22 semi-auto, LR; Lot 63: Italy Brevettata 1900 .22 blank & gas; Lot 64: Ruger Red Hawk .44 mag stainless steel revolver w/belt & holster; Lot 65: Winchester 70 30-06 bolt action rifle w/bi-pod & Bausch & Lomb scope (elect. 3000); Lot 66: Ruger M77 Mark II .270 bolt action rifle, stainless, BSA platinum scope 6x24-44; Lot 67: Marlin 336W 30-30 lever action rifle w/Redfield 3x9 scope; Lot 68: Mossberg 500A 12 ga. pump, 2 ¾" & 3" vent rib w/Simmons 3-9x40 scope; Lot 69: Marlin 80 .22 S.L.L.R., bolt action; Lot 70: Ruger 1022 .22 LR semi-auto w/scope; Lot 71: FIE .22 revolver; Lot 72: Marksman .177 BB gun; Lot 73: Browning BAR 300 Win Mag rifle, Belgium made, w/Leupold 2.5x8 scope; Lot 74: Springfield 12 ga. dble brl, dble trigger, full & mod. choke, 2 ¾"; Lot 75: Remington Woodsmaster 742 30-06 semi-auto, w/Weaver 2x7 scope; Lot 76: Winchester 74 .22 semi-auto, LR; Lot 77: Taurus PT-99AF 9mm semi-auto pistol; Lot 78: Remington 760 .243 Redfield 6x scope; Lot 79: SKS 7.62x39 w/bayonet & sling; Lot 80: Herter's 357 mag revolver, 6" brl; Lot 81: PSE Mach Flite 4R compound bow, 65-80# fast cam 29-30 in. draw length, new fast flight string; Lot 82: PSE Mach Flite 4 compound bow, 60-70#, 28-30 in. draw length, w/70% let off, over-draw, sights, quiver; Lot 83: Remington 12A .22 pump; Lot 84: Savage 110 30-06 bolt action, NIB.

TERMS: Cash or check w/proper ID. Nothing to be removed until settled for. Not responsible for accidents. Food available Statements made day of sale take precedence over any other printed material.

LEPPKE REALTY & AUCTION

501 S. Main, Hillsboro, KS 67063, 620-947-3995

www.leppke.com

LYLE LEPPKE, Auctioneer/Broker; 620-382-5204

ROGER HIEBERT, Auctioneer/Sales Assoc.; 620-382-2963

SCHULER FEED WAGONS

Vertical single & twin screw TMR-BF Series - HF255 Hay Feeder - Steiner Implement SABBETHA, KANSAS 785-284-2181

AG LIME FOR NORTH CENTRAL KANSAS

HAULING & SPREADING GEARY GRAIN, INC. Junction City, Kansas 66441 785-238-4177 Toll-Free: 877-838-4177

Mid-America FEED FINISHING FIRST!

- Steam-Flaked Corn Rations
- Pens - 40 to 200 Head
- 5% Feed Financing
- Competitive Cattle Financing
- Age and Source Verified Program
- 6 Packers Buying Live, on the Rail or Value Based

WANTING GENERAL INFORMATION AFTER HOURS? Call 1-800-228-4532, Ext. 103. Leave your name and address, and we will send you a free informational packet or visit our website at: www.midamerica-feedyard.com

Call, or better yet, stop in to see for yourself why cattlemen from across the country are "Finishing First" at

Mid-America Feed Yard

38 mi. W of Beatrice, NE on Highway 4

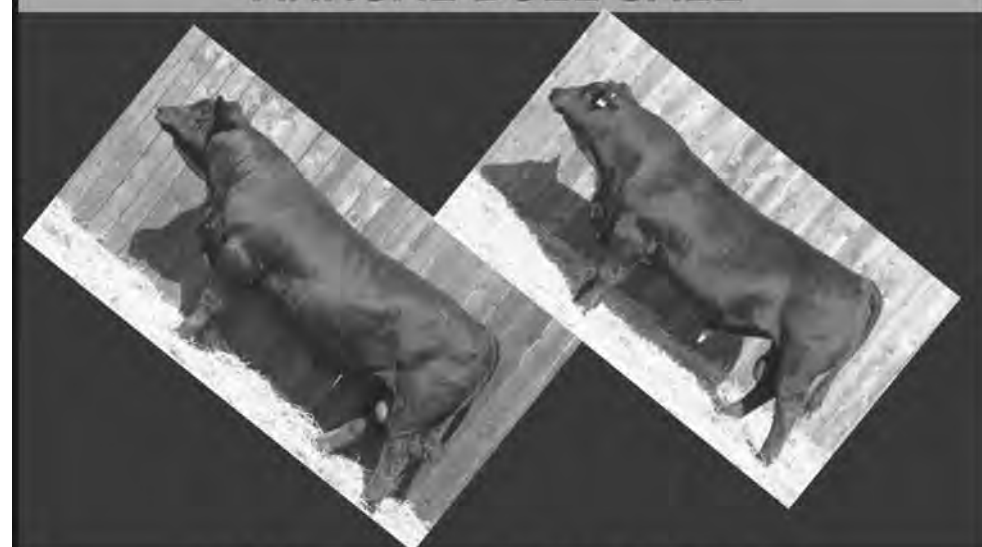
In these turbulent times it is hard to know what is the right decision to make on your investments.

We feel at Mid-America that it is our time to put out our helping hand. Starting October 15 through November 30, 2009, any cattle shipped to Mid-America will receive a per head credit on their feed bill.

Call today for all the details on our "Freight Credit Program" and let us help you pay your freight!!!

1-800-228-4532
Ohiowa, Nebraska

IRVINE RANCH ANNUAL BULL SALE



SATURDAY, NOVEMBER 7th, 2009

1:00 p.m., At the Manhattan Commission Company SELLING SIMMENTAL and SIMANGUS BULLS

THE BULLS SELLING:

- *Avg AP Index \$133 (TOP 2% of SM Breed).
- *Avg TI Index \$77 (TOP 1% of SM Breed).
- *Majority Homozygous Black (DNA tested).
- *Fertility Tested and Guaranteed Breeders.
- *Performance/Ultrasound Tested.
- *Delivery and Winter Care Available.
- *Tested BVD-PI Free.
- *Free of Genetic Defects for AM- NH.

On 86-day Gain Test, the Sale Bulls Posted an ADG of 4.71 lbs/day with \$0.51/lb Cost of Gain. Feed Conversion was 4.34 lbs of feed/lb gained on a dry matter basis.

FOR A SALE CATALOG, PLEASE CONTACT...

IRVINE RANCH

3370 Casement Road, Manhattan, KS 66502

Breeding Simmentals since 1968, a Continuous Herd since 1927

John and Holly Irvine
Paul and Mary Beth Irvine
Bernard and Emily Irvine

(785) 313-7473

(785) 556-6885

(785) 564-3872

Email:

johngirvine@sbcglobal.net

Auction Sales Scheduled

check out the on-line schedule at www.grassandgrain.com

October 15-October 28 (on-line bidding) — Trees at Edgerton online only, www.dlwebb.com. Auctioneers: Webb & Associates.

October 21-Nov. 4 (online bidding) — Turn of the century house at Paola, online only, www.dlwebb.com. Auctioneers: Webb Realty.

October 21-Nov. 5 (online bidding) — House & acreage in Ottawa, online only, www.dlwebb.com. Auctioneers: Webb Realty.

October 22 — Tractors, combine, farm equipment at Pretty Prairie for Gary Waltner Estate. Auctioneers: Giefer Auction Service.

October 23 — Gift store fix-

tures, cars, trucks & SUVs, computers, electronics & tools at Manhattan for Seizure assets from the Kansas Dept. of Revenue. Auctioneers: Totally Auction.

October 24 — Household goods, antiques & misc. at Wakefield for Lorraine Cowell Estate. Auctioneers: Kretz, Hauserman, Bloom Auction Service.

October 24 — Garden tractor, mowers, tools, household, antiques & collectibles, vehicles at Belleville for Donald & Laura Slagle and Lonnie Roe. Auctioneers: Novak Brothers & Gieber.

October 24 — Butler Co. real estate, appliances, furniture, vehicle, tools, lawn tools, antiques,

kitchen & household, fishing items & misc. at Rose Hill for Dean & Bette Piper. Auctioneers: Swenson Real Estate & Auction Service, Inc.

October 24 — Harvey Co. real estate, tractors, vehicles & farm related, guns

& household items N. of Burrton for Robert & Prudence Thornton. Auctioneers: Van Schmidt Auctions.

October 24 — Guns, antique, Smith & Wesson collection, military, rifles & shotguns, coins & jewelry at Abilene for Area Collectors. Auctioneers: Reynolds, Mugler & Geist Auction.

October 24 — Tractors, trucks, trailers, farm machinery, collectible vehicles, shop tools, household & farm related items,

fencing equip., wire & posts at Brookville for Don Arensman Estate. Auctioneers: Victor Brothers Auction & Realty, Inc.

October 24 — Collectibles at Salina for Wayne Bernek-ing Estate. Auctioneers: Thummel Real Estate & Auction, LLC.

October 24 — Tools, pottery & glassware, collectibles, NASCAR Model Collection at Osage City for Mrs. Gary "Kay" Mussatto. Auctioneers: Beatty & Wischropp Auctions.

October 24 — Antiques, primitives, collectibles, clocks & clock related items, furniture, misc. lodge items at Portis for Ronald Jackson Estate (The Clock Shop) & The Osborne Lodge. Auctioneers: Wolters Auction & Realty.

October 24 — Furniture, paintings, glassware, antique dolls at Topeka for Marjie Meyers. Auctioneers: Raine Auction Service.

October 24 — Real Estate, furniture, appliances, din-

AUCTION

SATURDAY, OCTOBER 24 — 10:00 AM

Hartford Community Building, Main Street HARTFORD, KS, Across from the High School. Hartford is located East of Emporia on I-35 to exit 141 and South on Highway 130 about 8 miles.

ANTIQUE & COLLECTIBLE FURNITURE

Fancy dresser and mirror frame; Oak child's pattern back rocker; Walnut punched tin jelly cabinet, 2 drawers at bottom; Walnut drop leaf table; Walnut pump organ (still works); Claw foot organ stool; Oak glass front kitchen cupboard; Oak 4 drawer hand made dresser; Boston Grange wood folding chairs; Platform rocker, upholstered; Wooden wheel chair; Sewing table with drawers; Maple gentleman's chest with fold out desk; Walnut 4 drawer chest; 50's love seat; Cast iron pie cooler; 50's refrigerator; Century small woodburning parlor stove.

TOYS & CHILDREN'S ITEMS

Tru Scale pull type combine; 1950's IH scale model pickup; Log cabin bank; Super Giant Piggy Bank (IOB); 2 bottom cast iron sulky plow; 50's Baby clothes.

CHINA, POTTERY & GLASSWARE

6 glass paper weights; Blue Buffalo Pottery includes 10 plates, 12 bread plates, 8 cups, 10 dessert, 8 salad, Butter, gravy boat, bowl with lid, Creamer and sugar, Platter; Haviland, several plates and partial place settings; 20 pieces Blue Willow; 5 Pieces Flow Blue; Newer Blue Willow; Dishes from Bavaria, Germany, Austria, Portugal; J R. Meakin and JG Meakin iron stone platters; Italian pottery with chickens; Spode china, includes 10 cups and saucers; 30+ demitasse; 20 small creamers and pitchers, Chezk, Italy, Blown glass, etc; Noritake; Nippon; 8 pieces of Amber; 8 glass knife rests; Souvenir plates, (Hartford and religious); Wedgwood napkin ring and pitcher; China eggs; Occupied Japan teapot, creamer and sugar, square cottage; Occ Japan clown; W. H. Grundley & Co pitcher; N Currier and Ives plates; Noritake carnival Bowl; Lefton china; Royal Worcester; Fostoria; Iridescent pitcher and 5 glasses, butter dish; Apple cookie jar, sugar and S&P; Square Amethyst lamp; Frankoma coffee pot and 10 other pieces; Glass handle bucket; Milk glass; Depression glass; Salts include set of 4 with spoons.

NOTE: This is a list of the items we could see "on the surface". Many of these items have been passed down for several generations from friends, aunts, parents, grand parents and great grand parents. A lot of good old glassware and collectibles.

TERMS: Cash or Approved check day of auction. Remove all items day of auction.

A few photo's on our website-
www.hancockauctionandrealstate.com

SELLER: E. PEARL ROBERTS ESTATE

HANCOCK
AUCTION & REAL ESTATE

620.279.4575 or 620.340.5692
www.hancockauctionandrealstate.com

PRIMITIVES

Door stops; Wooden sugar firkin; Pennrich motor oil gallon can; Wooden adv boxes; Tools; Wagner ware aluminum waffle iron; Curling irons; Hair clipper; Pipes; Razors; Bottles; Ice skates; Sad irons; Coal shovels; Enamel ware; Blue Band #10 jar; 2 gall stone jar; Wooden axe; Walking sticks, 1 is leather; Fancy handle umbrellas; Planters; Zenith, Admiral shelf radios; Butter pats and wooden ware.

LINENS, QUILTS, SEWING ITEMS

Singer Featherweight sewing machine; 6-8 quilts, hand, and machined; All ages craft, Women's Household and Kitchen Klutter magazines; Doilies and fancy work; Gloves; Hat boxes, hats, mens and ladies; Wooden adv hangers; Southwest Woven rugs and small rugs.

HUMMELS

6 figurines.

OTHER COLLECTIBLES

Tin Type pictures; 3 pieces Alabaster; Greeting cards; Marlow woodcuts; Air guns; Cities Service pocket knife and others; Cast "Thinker" Bookends; LP 75's, a few 45's.

JEWELRY

Gold Filled earrings and lapel pins; Mother Blitzer Pearl in Sterling; Smokey Topaz in Sterling; Moonstone in Sterling; Tiger eye cufflinks; Rubies; Manmade Opal; 10K with Synthetic Ruby; Rhinestones; Crocheted glass beads; Cubic Zircon in Sterling; 3—10K gold sorority pins; 14K & 18K gold bands; Mother of Pearl buttons; Fashion pearls; More, and a tub full of costume jewelry.

SILVER & SILVER PLATE

Sterling candle holders; 2 quad plate tea sets; US spoon and USN fork; TWA spoon, fork, and knife-International Silver Co.; Butter dishes and S&P's; LOTS of Sterling and silver plate flatware and serving pieces; Set Gold "Eternally Yours" flatware for 12.

BOOKS

150 books from 1821 to 1950. Some leather bound. A partial list is posted on our website.

6TH ANNUAL PRODUCTION SALE

Saturday, Oct. 24 • 1:00 PM
Lyons, Kansas • Celebration Centre

FEATURING ALL REGISTERED STOCK
Approximately 85 Does • 10 Bucks
To view sale catalog go to www.kmgaonline.net

Plan on attending the South Central Goat Conference in Lyons in the morning!
For more information contact:
Cory Scott, KMGA President
785-597-2345 or 785-218-6886

Visit us at: www.EshQS.com
Specializing in complete Post Frame Buildings

Serving Kansas & western Missouri from 3 Locations.

Haven, Kansas (800) 208-9167 Richmond, Kansas (800) 374-6988 Cameron, Missouri (877) 374-6988

Specials include: Delivery, Taxes & Install

30' x 60' x 12'	30' x 60' x 12'	40' x 60' x 12'	50' x 80' x 16'	60' x 120' x 16'
includes One 60' open side Five 12' Bays 3' overhang over open side	includes One 12' x 60' open lean-to One 12' x 12' single slider One 3' entry door	includes Two 10' x 10' Garage Doors One 3' entry door	includes One 24' x 16' split slider One 3' entry door	includes One 30' x 16' split slider One 3' entry door
\$11,900	\$16,700	\$17,900	\$27,900	\$46,500

Kansas Cattlemen's Association

606 N. Washington St., Junction City, KS 66441 • Phone (785) 238-1483
E-mail: cowsrus@kansascattlemen.com • Website: www.kansascattlemen.com

Callicrate Feedyard

Mike Callicrate
St. Francis, KS
785-332-3344

Coake Feeding Co

Richard Koenke
Dodge City, KS
620-227-2673

Dodge City Feeders, LLC

Bronson Smith
Dodge City, KS
620-792-1378

Finney County FY

Doug Parham
Garden City, KS
620-275-7163

Ford County Feedyard Inc.

Danny Herrmann
Ford, KS
620-369-2252

Hoxie Feedyard

Scott Foote
Hoxie, KS
785-386-4519

Maverick Feeders LLC

Gene Carson
Dodge City, KS
620-227-3308

Leap of Faith

Everyone has auto insurance, and I, like many, have had the same auto insurance company since my parents had me on their policy when I a kid. I remember asking my mom several years ago why she and dad used this company. And fifteen years later, I can't remember what she said about why we used (X) but I do remember why we changed to that company. Mom told me that she and my dad used another company since they were married. She said that in the 1980's there was a hurricane and the company that they used refused to pay out claims to thousands of policy holders. Although mom and dad were not even in the state where the disaster hit, she told me that the insurance company lost sight of its responsibility to its customers. She said that the company had been around since she was a kid and her parents were policy holders, but that the company got so big that it didn't think it had to obey the rules and stopped working for its people. So my parents left them and have been happy with this other insurance company for over 21 years.

And I wonder ... we often stay with a company or an organization because it's been around for a hundred years or because our parents belonged ... or maybe because we enjoy the free suppers and beverages that go along with it. BUT, if that company or organization loses sight of why it began in the first place, then isn't it our obligation to let them know that they lost their way ... and if they do not do the right thing, or spend your money appropriately, isn't it better to move on than to allow them to suck the money right out of us?

We are here to Work For YOU! KCA...we may be young, but we are producer run, membership directed. Every producer member votes by mail in ballot. Become a member and plan to attend the annual convention at the Ramada Inn in Salina January 29-30.

The Kansas Cattlemen's Association is Kansas' fastest growing cattlemen's association. Our mission is to restore profits, self-esteem, freedom, fair trade, trust and community pride back to the farms, ranches and rural communities across Kansas and the Nation.

McPherson County Feeders

Allan Sents
Marquette, KS
785-546-2216

Mid America Feeders, LLC

Bronson Smith
Great Bend, KS
620-792-1378

Ottawa County Feeders

Perry Owens
Minneapolis, KS
785-392-2184

Rooks County Feeders, LLC

Phil Conyack
Plainville, KS
785-434-2114

Shaw Feedyard, Inc.

Bill Shaw
Ashland, KS
620-635-2670

Winter Feed Yard

Ken Winter
Dodge City, KS
620-225-4128

nerware, collectibles, household items at Topeka for Beulah Joy Trust. Auctioneers: Gannon Real Estate & Auctions.

October 24 — Tractor, ATVs, hand tools, farm related tools & furniture at Solomon for Bert Wilson. Auctioneers: Ron Shivers & Allyn Thompson.

October 24 — Antique & collectible furniture, toys & childrens items, china, pottery & glassware, primitives, linens, collectibles & jewelry, silver & silverplate & books at Hartford for E. Pearl Roberts Estate. Auctioneers: Hancock Auction & Real Estate.

October 24 — Vehicles, 4-wheeler, tractors, trailers, combines, mowers, tools, guns, farm equip., hay & misc. at El Dorado for Estate of Larry E. Fieser. Auctioneers: Sundgren Realty, Auctions & Appraisals.

October 24 — Boat repair tools, parts & access., shop tools, outdoor gear, scopes, reloading, boat, camping & outdoor misc., guns & bows at Hillsboro for the late Don Bezdek. Auctioneers: Leppke Realty & Auction.

October 24 — Glassware, collectible misc., furniture & misc. at Holton for Pat McClintock Estate, et al. Auctioneers: Pagel Realty & Auction.

October 24 — Farm & cattle equip., building materials, shop, yard, vehicles, antique & collectibles at Hiawatha for John & Vera Schilling Estate. Auctioneers: Howard Auction Service.

October 24 — Harley Davidson, pickup, ATV, farm equip., household & antiques at Tracy, MO. Auctioneers: J&J Auction, LLC.

October 24 — Coins W. of McPherson. Auctioneers: T&A Auction Service.

October 24 — Pickups, guns, antiques & collectibles, tools, shop items & misc.

at Ottawa for Dale & Twyla Weien. Auctioneers: Griffin Auctions.

October 24 & 25 — Furniture, antiques, log cabin furn., western collectibles, bronze art, taxidermy, Indian artifacts, antique gun collection, jewelry, coins & paper money at Wichita. Auctioneers: Bud Palmer Auction.

October 25 — Toys, collectibles, railroad & furniture & glass at Salina. Auctioneers: Thummel Real Estate & Auction, LLC.

October 25 — Bar & restaurant equip., tools & automotive, antique & collectibles, household & other at Manhattan. Auctioneers: Gannon Real Estate & Auctions.

October 25 — Coins & currency, sporting goods & tools, jewelry, collectibles, toys & glassware, antique & modern furniture, household at Lawrence. Auctioneers: D&L Auctions.

October 25 — Standard Oil collectibles & other collectibles, shop items, yard care & yard art, portable shed, filling station & U-Haul supplies, farm equip., PTO generator, appliances & household furniture & household at Clay Center for Norman & Mary Lou Rettig. Auctioneers: Mugler Auction Service.

October 25 — Antiques & collectibles, household, car, guns, coins & misc. at Ottawa for Dorothy Taylor Larkin Estate & Other Estates. Auctioneers: Griffin Auctions.

October 26 — Cars & camper, collectibles, tools & household W. of Scandia for Pete Barclay Estate. Auctioneers: Thummel Real Estate & Auction, LLC.

October 27 — Douglas Co. land at Topeka. Auctioneers: Sanders Auction

October 28 — Fink Beef Genetics Angus and Charo-

lais Bull Sale, Randolph. October 28 — Complete cattle dispersal at Manhattan for Triple C-KS Division.

October 28 — Butler Co. land at Leon. Auctioneers: Farmers National Co.

October 29 — Dickinson County land at Herington for Palo, Inc. Auctioneers: Hallgren Real Estate & Auctions, LLC.

October 30 — Household, collectibles, quilts, rifle at Waterville for Ethel Weide Estate. Auctioneers: Olmsted & Sandstrom.

October 30 — Vehicles, trailers, tractor, golf carts, appliances, kitchen misc. & tools at El Dorado for Prairie Port Festival. Auctioneers: Sundgren Realty, Auctions & Appraisals.

October 30 — Church pews & household E. edge of Clay Center for Fountain of Life Christian Center & Others. Auctioneers: Mugler Auction Service.

October 31 — Gun & knife collection, collectibles at Council Grove for Private Seller. Auctioneers: Macy Realty & Auction, Carey Macy, Steve Patterson.

October 31 — Farm items & equip., cattle equip., tools, household & collectibles at Chapman for Mr. & Mrs. Maurice Delker. Auctioneers: Reynolds, Mugler & Geist.

October 31 — Farm machinery, trucks & trailers, guns, misc. & consignments near Thayer for Mr. & Mrs. Everett Ray Thornton. Auctioneers: Larry Marshall Auction.

October 31 — House in Shawnee Co. N. of Topeka for Pat Oelke. Auctioneers: Murray Auction & Realty.

October 31 — House & real estate at Holton for Spring Creek Trust. Auctioneers: Cline Realty & Auction.

October 31 — Shotguns, rifles, handguns, knives, antiques & collectibles, manuals at Council Grove for Private Collection. Auctioneers: Macy Realty

& Auction.

October 31 — Tractors, new hay equip., trailers, utility vehicles, brush cutters, late model trucks S. of Fort Scott. Auctioneers: Hertzog Auction & Kelly Real Estate & Auction Co.

October 31 — Rifles, shotguns, bayonets, knives, hand guns, Nazi memorabilia, telescopes & sights, misc., trench art at Sabetha for John Patterson Estate. Auctioneers: Hartter Auction Service.

October 31 — Cars, Jeep, boats, mowers & trailers, collectibles & household at Mankato for Richard Russell Estate. Auctioneers: Thummel Real Estate & Auction, LLC.

October 31 — Jeep & trail bike, antiques, primitives & collectibles, guns & gun related, furniture, tools & misc. at Portis for Johnson Guns & Ammo, Kennet W. Johnson Estate. Auctioneers: Wolters Auction & Realty.

October 31 — Vehicles, handicapped equip., tools & antiques at Greenleaf for Estate of Orville Bolejack. Auctioneers: Raymond Bott, Lee Holtmeier & Luke Bott.

October 31 — Dolls, doll furniture, strollers, buggies, books & other doll related items at Topeka. Auctioneers: Specialty Auctions.

October 31 — Tractors, combines, trucks, trailers, industrial, livestock, yard &

garden, RVs, sporting, tools & shop equip. at Great Bend for annual fall consignment. Auctioneers: Schremmer Auction.

November 2 — Lyon Co. real estate at Miller for William Dickson Trust, Anna M. & Willard Dickson. Auctioneers: Wayne Wischropp, Century 21 Miller & Midyett.

November 4 — Republic Co. real estate at Clyde for Candace Schwab & Angie Downing. Auctioneers: Larry Lagasse Auction & Real Estate.

November 4 — Real Estate, tools & misc. at Wamego for William G. & Ellen L. Trimmell Trust. Auctioneers: Gannon Real Estate & Auctions.

November 5 — Real Estate at Clyde for Ivan Nobert, Shirley Jarvis & Barbara Garlington. Auctioneers: Larry Lagasse Auction & Real Estate.

November 6 — Sumner Co. land at Milan for Alfred Jenkins Estate. Auctioneers: Theurer Action/Realty LLC

November 6 & 7 — Car & pickup, gas & Maytag engines, appliances, furniture, shop equip. & tools at Caldwell for Wilma Courtright & Don Courtright Estate. Auctioneers: Cochran Real Estate & Auction.

November 7 — Consignment Auction at Lyndon for Harley Gerdes.

November 7 — Consignments at Salina. Auctioneers: Wilson Realty & Auction Service.

November 8 — Shades of Red & White Show Calf Sale at Clay Center for Kanza Cattle & Guest Consignors.

November 10 — Lyon Co. real estate at Olpe for Kerry L. Sandwell. Auctioneers: Griffin Real Estate.

November 11 — Greenwood Co. land at Eureka. Auctioneers: Farmers National Company.

November 14 — Wabaunsee Co. pastureland NW of Harveyville for Jen-D Ranch. Auctioneers: Cline Realty & Auction.

November 14 — Household, misc. & some farm equipment S. of Alma for Hess Family. Auctioneers: Murray Auction & Realty.

November 14 — Shotgun, pistols, railroad memorabilia, collectibles, primitives at Caldwell for Fred Strickland Estate. Auctioneers: Cochran Real Estate & Auction.

November 14 — Equipment consignments at Topeka. Auctioneers: Simnitt Brothers Auction.

November 14 — Atchison Co. land at Rockport, MO for Lee & Angelica Hardy. Auctioneers: Showalter Auction & Realty Co.

November 14 — Bull sale at Wheaton for The Moser Ranch.

GUNS, BAYONETS, SWORDS, TRENCH ART, KNIVES, NAZI

AUCTION

SATURDAY, OCTOBER 31 — 9:00 AM

Hartter Auction Center, 1002 S. Old Hwy 75 — SABETHA, KANSAS

AUCTIONEERS NOTE: "This collection came from the John Patterson Estate, SW of Wichita, Ks. Some unusual items collected through out the years. As the guns and items have some age, some do need some attention. John spent a lot of time researching his hobby. Most of the descriptions have come from his notes. Hope to see you all on the 31st of Oct."

70-RIFLES

Spencer Burnside, Model 1865, # 6; Winc 1873 Carbine, 32-30, Octagon bl; Springfield 1873 Rifle, 45-70; Harpers Ferry 1841 Rifle, .52 cal.; U.S. Model 1917 Eddystone, 30-06; Springfield Armory 1898; Springfield Armory, M1 Garand, 30 cal.; Springfield Armory 1898 Carbine, 30-40; English Tower 1862, .577 cal.; Navy Cadet Rolling Block 1867, 11mm; Mosin Nagant 1955, NVA, 7.62 x 54; Russian Mosin Nagant, 1938, 7.62 x 54; Japanese Arisaka, type 99 long rifle, WW II, 7.7mm w/ bayonet; Japanese Arisaka, type 99, short rifle w/bayonet; Remington 8C; French MAS 95/56 Model 49, 7.52 — 308 w/ Nato grenade launcher & bayonet; Old Kentucky percussion rifle; French 1907-15 w/bayonet; Australian Lorenz 1854 percussion; Mauser 98, 8mm w/bayonet; Mauser 98K, 7.92 Carbine; Swiss Vetterli 204-4; Swiss Waffenfabrik, M 78; Belgium 380, 8mm, octagon bl, 24"; Italian 1890 & 1941 w/bayonets; Spanish Model 1916 short rifle; Argentine Mauser 1891, 7.65 x 53; Turkish Model 88, German mfg, 8mm, WW I; Win. 1890, .22 short, oct. bl, 3rd model; Winc 74, .22LR; Winc. 67, .22 S, L, LR; Marlin .22LR semi-auto; Springfield 187S, .22LR; Remington 121, .22 S, L, LR; Stevens 1915 Favorite, .22LR; Remington 12, .22 S, L, LR, round bl; Remington Rolling Block, 45-70 w/ bayonet; 3-Black powder 50 cal. Hawken, Mowery Bicent, Hawken-Spain; Others.

29-SHOTGUNS

Richards 12 ga. dbl muzzle loader, percussion, guard gun at Andersonville Prison 1862; Ithaca 37, 12 ga, Gov't w/ adj Cyclone choke; New Baker Model 1886, 10 ga. dbl, 32"; Rubans Fins, 12 ga. dbl, percussion; 2-Richards 12 ga. dbl, percussion; Marlin 1898 12 ga, 30", grade "A"; Hopkins & Allen 12 ga. single falling block; Winc

1200, 12 ga., 2 ¾"; Ithaca 37 Featherweight, 16 ga.; Ithaca 20 ga.; American Arms 12 ga single; Parker dbl 12, rough; Others.

BAYONETS

75+ incl. German WW I Saw back, German, Russian, Turkey, Czech, Spanish, Sweden, Japanese, Italian, Yugo., Chile, Norway, G. Britain, Argentine, U.S.

KNIVES

30+ incl. combat, bush, bolo, machete, German gravity, German trench, U.S. knuckles, Set of six: Franklin Mint collector knives, others.

90-HAND GUNS

Colt 1849 revolver, .31; Colt Derringer .41, 1st variation; Colt 1877 DA Thunderer; Colt Army Special, .32-20 ; Colt .45 pistol, Argentine; Colt New Police .32; Mauser, Broom Handle 1896; German boot pistol, single shot, half octagon; French 1873, 11mm, WW I; French pin fire 12mm, Civil War; French 1895, 8mm; French o/u percussion; Spanish Astra 400 or Model 1521, 9mm, WW II; Spanish Trocalo revolver, .32L; Modelo Super Star, Spanish, SA 9mm pistol; Russian Nagart 1895, 7.62mm; G. Britain, Enfield #2 Mark I .38; German P-38, AC42, 1st. variation; Very flare pistol, 25mm, brass; 2-German flare pistols, WW I; German & Belgium pin fire revolvers; Italian 1889, 10.4mm, WW I; Single shot deringer, very small, unusual; Stevens 35 Offhand, .22; Stevens Pocket Rifle .22, 10" single shot; Stevens .41 Pocket pistol/derringer, .22 single shot; Phoenix .25 cal. Pistol; H&R Model 2, .38; H&R "The American" DA .38 S&W 4 ½", pearl grips; H&R Model 04 DA .32, 6"; Hopkins & Allen Safety Police .32, 4"; Forehand & Wadsworth Swamp Angel, .41, 2"; 2-H&A Ranger #2 model, .32; H&A Bluejacket #2, .32 2 ½"; British Bulldog, folding trigger; S&W 2nd model .38, SA; Others.

NAZI MEMORBILIA

Badges, Stick pins, Match box holders; 2-Luftwaffe officer daggers; Dress bayonet WW II; Other misc.

TELESCOPES * SIGHTS

Brass telescope w/ brass & wood tripod; Small S&A Ranger telescope, 6"; Telescope binoculars AK&S #PB6-779; U.S. Machinegun panoramic sight model 1918; Panoramic telescope sight; Telescopes M70S & M71D; Periscope M6; Observation telescope, M49; Brass U.S. Marching compass, Mark VII, model E; German Disnstglas 7x50 binoculars; Brass Japanese binoculars; U.S. Signal binoculars, civil war; 15-Other binoculars.

MISCELLANEOUS

Japanese parachute; Cannon of all kinds: brass, wood, metal, etc; Several Air Force, Army, Coast Guard, Marines, Navy uniforms; One lot of shoulder patches; Several lots of medals & badges; One lot of bar ribbons; Marx tin toy tank #3; 7-Cast WW I toy soldiers; 3-Cast iron toy tanks; 23-Toy Tanks & Half-Tracks, U.S. & German; Japanese canteen; U.S. Army Signal Corp. elec lantern; 4-Brass bugles ; U.S. Helmet shells, no liners; Gas masks, Canteens, Etc.; Unit pictures: Bat. D, 5th AN, Camp Dix, 1920; Bat E, 161st Artillery, Camp Robinson, Ark, 1941; Co. A, 350th Inf, 88th Div; War bond postage, framed; 6-Army in Action prints; Small picture of USS Corry, ship #334; 36 Volumes of Time Life military books; WW I & WW II History books; Other misc books & items.

TRENCH ART

Large amount of trench art: Lamps, Ash trays, Vases, Paper weights, Shell casings-some with rounds; P-38 fighter plane, made by Royal McShea Jr. w/ 55th fighter group, Wormingford, England, WW II; Other unusual items.

ANTIQUE AUCTION

SUNDAY, OCTOBER 25 — 10:00 AM

Auction will be held in Kenwood Hall at the Saline Co. Expo Center, 900 Greeley SALINA, KANSAS

TOYS

Large collection of cap guns in various condition; many holsters inc.: Hopalong Cassidy; Hopalong Cassidy wall night light; tin Air Force plane; German Ritteloeweberi 891; 2" cast iron cat; cast iron bank building; cast iron deer bank; Texaco boat; marbles; fighting men mold; chemistry set; 2 HiWay road set; Davy Crockett wood burning set; Daisy Sonic game; windup fish; Hubley helicopter; Space Shuttle toy; Dial typewriter; army truck, trailer and tank; Tonka cement mixer; Lazy Day truck; toy soldiers; Dale Evans school bag; Popeye, Tennessee Tuxedo soapies; US Metal water can; Rifleman lunch box; Fisher Price cash register; Tonka, Buddy L trucks; model grader; windup Fred Flintstone; battery robot; Tru Scale tractor; tin airplanes; Toe Joe; Wonder Horse; Color Tone top; windup duck; tin cannon; tin typewriters; Disney doll house; Briar horse; Rabbit Hunt game, rough; Mary Poppins color book; several children's books inc.: Rin Tin Tin, Daniel Boone, Bonza and Gunsmoke Big Little books; many 12, 15 and 25 cent comic books inc.: some Super Heroes, Lone Ranger, Jungle Jim, other; assortment of other toys.

COLLECTIBLES, RAILROAD & FURNITURE Cleveland drill bit store cabinet; Steffens clock; Walters

saddle; Arts & Crafts andirons; Yei figures sand painting; wood cut; mountain scene oil painting; store shades; Edison cylinder dictaphone; Standard Time Gilbert wall clock; Regulator wall clock; Art Deco clock; 4 Art Deco chairs; Deco desk chair; oak roll top store catalogue desk; 6' oak hat store showcase; walnut marble insert dresser; walnut drop leaf table; oak parlor table; oak stand; ranch oak magazine stand; cast iron bed with brass knobs; 20's dresser; 2 organ stools; rocking chair; bridge lamp; walnut built in china; oak base for Xray machine; Zenith record player; travel trunk; tea cart; 7' x 10' rug; chrome counter top display; store wire bin; Spring Air salesman display; shoe store stool; oak file drawers; 6 pine country store drawers; Stella guitar; violin; uke; cast iron frog and bull dog door stops; Dazey pencil sharpener; 5 gal. Red Wing crock; RB Rice piggy bank; game picture; Coke items inc.: 1950's chest machine, picnic cooler, case bottles, trays, bears, tins, glasses, dinnerware; Pepsi and other bottles; sponge bowl; owl lamp; Escape electric picture; horn hat rack; chalk figures; Badger picnic basket in original box; air-plane pictures; silhouette pictures; Christmas decorations; strong box; advertising pens; assortment costume jewelry;

silver plate items; light fixtures; gas lights and parts; ice box hardware; sheet music; fishing reels; linens; cookie cutters; new Mastermix mixer; collectible tins; car tags; line-mans phone; toys; Niclaus & McGregor golf clubs and bag; many catalogues; assortment books; also selling will be Craftsman riding lawn mower; yard tools; yard trailer; 15 cu. chest freezer; assortment tools; pots and pans.

GLASS

Tiffany brandy; Royal Grafton plate; Hopi Indian bowl; etched stems and tumblers; assortment cups and saucers; RS Prussia cup; Roseville 619-5; Royal Worchester bunnies and birds plate, other pieces; Lenox music box and celery; Royal Crown Derby England vase and rabbit; cut glass bowl; Wedgewood dish; Royal Copenhagen nut and bone dishes; 6 cut Port sherry; Rosenthal dish; Heisey pitcher; lead glass bowl; N. Rockwell bowl; Coalport egg shaped box and Maxine figure; Limoges Tiffany Garden box and thimble; drugstore glasses; pink cake plate; Chez dinner plates; Plummer NY Christmas dishes; Franconia Pirouette breakfast set; hand painted tea set; McCoy frog with umbrella; Pagoda vase; Hummel Wash Day & Baker; Father Time Ghome; assortment other glass.

Note: This will be a large auction. There are many cap guns & toys, they have been in storage for years. We will run 2 auctions part of the day. Check our website for pictures at www.thummelauction.com.

Auction Conducted By Thummel Real Estate & Auction LLC Beloit & Concordia, Ks • 785-738-5933



BAXTER BLACK

ON THE EDGE OF COMMON SENSE

Tooth Ferry

I lost a tooth today. The molar on the northwest side next to my only wisdom tooth that ever came in. Which explains why sometimes I go over the edge of common sense. I mean, how many wise men would pass a policeman on a double yellow line, pass up an opportunity to invest in USTRC at its beginning, and put Brown Swiss bulls big as box cars in with a pen of replacement heifers?

I was born with no teeth

... Really. And four of the permanents never came in. It's genetic because my father and uncles were missing lateral incisors. We were born to take a bit. I asked my dentist if I was evolving up or down the food chain? He said people's jaws were getting smaller and we don't need as many teeth as Adam and Eve, therefore I was in the fast lane!

Which reminds me, I also got a ticket for going

too slow in the fast lane in California.

I mentioned my kin-folks. I confess, by the time I was old enough to pay any attention to my dental history, they'd already lost all their teeth and wore dentures. They were raised pre-'fluoride-in-the-water' and 'in-the-toothpaste'.

I've often wondered if we had lived in Lubbock more than two years, maybe I'd have stronger teeth? There was so much fluoride in that Texas pan-handle water kids rarely had cavities. Although the fluoride turned their teeth brown. A small price to pay.

A kind word about dentists, they are a misunderstood profession. I have friends who compare dental work to waterboarding, but

not I! Look at what they have accomplished improving the condition of teeth in the U.S.A., and all without appointing a Dental Czar!

I go to the dentist to relax. Maybe it's the chair, or the music, or the smell of burning hair ... whatever, just wake me when it's over. That's how I felt after I received two tickets for speeding between El Paso and Alamogordo. Two days in a row. One going, and one coming back.

An older couple sat at the café counter in Hooper, Nebraska. He had a hamburger cut in half on his plate. His sweet wife sat next to him, patiently with nothing in front of her. A stranger walked in, observed and in a moment of generous compassion of-

fered to buy the missus her own burger.

"No, thank you," the old man said smiling, "We share everything."

The stranger went and washed his hands. Upon returning his heart swelled and he offered again.

"Thank you, but no," answered the old man. "As I said we share everything."

The frustrated stranger turned to the sweet lady. "Wouldn't you like your OWN hamburger?"

"Thanks anyway, Sonny. I'm waiting for the teeth!"

AUCTION HUGE RANCH EQUIPMENT DISPERSAL SALE

SATURDAY, OCTOBER 31 — 10:30 AM
SOUTH OF FORT SCOTT, KANSAS

8 NEW JD TRACTORS, NEW HAY EQUIPMENT,
TRAILERS, UTILITY VEHICLES, BRUSH CUTTERS, 7
LATE MODEL TRUCKS.

FOR MORE INFORMATION CONTACT:

www.kelly-sold.com

www.hertzogauction.com



BLYTHER ANGUS

Registered Angus Bulls and
Commercial Heifer Development Program



Available Now
FALL 2009



18-mo old BULLS
Low Birth Wt,
High Growth

200 BRED HEIFERS
Angus sired,
AI bred to In Focus,
Net Present Value,
Prime Time D806

Duane Blythe & Debbie Lyons-Blythe
BLYTHER ANGUS ~ White City, Kansas
Call for more information:
H: (785) 349-2652
C: (785) 466-1338; (785) 466-1883

Deals on Wheels at Dick Edwards



2005 Dodge Dakota
SLT, Quad Cab, 4x4
Sale Price: \$13,995



2007 GMC Sierra 1500
SLE, Crew, Loaded!
Sale Price: \$21,995



2008 Ford F-150
King Ranch, Crew, 4x4
Sale Price: \$32,995



2006 Ford F-350
SD, XLT, Reg. Cab, LB, 4x4, Diesel
Sale Price: \$24,995



2006 Dodge Ram 1500
Laramie Quad, 4x4, Big Horn Edition
Sale Price: \$23,995



2006 Chevy Colorado
X-cab, 2WD
Sale Price: \$11,995



2007 Dodge Ram 2500
SLT Quad, 4x4, Cummins Turbo Diesel
Sale Price: \$33,995



2007 Dodge Ram 1500
SLT Quad, 4x4
Sale Price: \$23,995



2008 Ford Explorer XLT
4x4
Sale Price: \$22,995



2008 Ford Edge SEL
All wheel drive.
Sale Price: \$23,995

Come see the
**NEW 2010
FORD F150
SUPER CREW**



**DICK
EDWARDS**
FORD - LINCOLN MERCURY
7920 E. HWY. 24
MANHATTAN, KANSAS

www.dickedwards.net
E-mail: sales@dickedwards.net



800-257-4004

785-776-4004



AUCTION

SATURDAY, OCTOBER 31 — 10:00 AM

Auction will be held in the National Guard Armory in — MANKATO, KS

CARS, JEEP, BOATS, MOWERS & TRAILERS

1994 Buick Park Avenue all electric 4 door, 60,108 miles; 1991 Buick LeSabre 4 door car auto, air; 1989 Jeep Cherokee Laredo 4 door automatic; 1974 MG Midget 2 door convertible body good, needs motor work; 1952 Willys Jeep has top & doors new tires; 2008 Baja Motorsport ATV 10 miles; 2006 Jazee zero turn mower; Vollrath Dream boat w/65 hp Evin Rude motor; Bass Buggy 6' boat; 6' fiberglass boat w/trailer; new MinnKota trolling motor; water skis; Kawasaki 300 4 wheeler needs carburetor work; 1972 Honda 125 motor cycle 2511 miles needs starter; 5' x 9' 2 wheel utility trailer w/ramp; 2 wheel car dolly; motorcycle trailer; 4 wheel trailer chassis; 2 Heckendorn 3 wheel mowers.

COLLECTABLES & HOUSEHOLD

Baldwin baby grand piano; oak top loader ice box; Riverside Aer Heater 2014 wood burning heating stove; Home Comfort wood burning cook stove gray & white; Apollo-Phone player piano; piano rolls; 30" butcher block; new oak curved glass curio cabinet; 4 gal. churn; pitcher pumps; 3 baby buggy frames; saddle makers vice; Vendorlator Pepsi machine;

pine sugar bin; brass strups from South America; brass car side lights; 2 metal doll houses; coffee grinder; cow bell; Texarkana guitar; World Trade Center model; Dumbo elephant bank; Staffer figures; figurines; Kensington plate; Occupied Japan figure; bird pictures; assortment other pictures; new Simmons Sleep Tronic twin box springs & mattress; round king & queen size beds; recliner; 9' x 12' floral rug; pine hutch; Hammond electric organ; rocker; 3 cu. refrigerator; Panasonic microwave; Zenith 25" TV; 4 captains chairs; sewing machine base table; pr. 60's night stands; serving cart; wall mirrors; fax machine; globe; macramé hanging table; wicker shelf; towels; large amount of Christmas inc.: lights, star, outdoor nativity set, blow up snowman, other; lawn chairs; pictures; ceramic owl; card tables; chairs; record player & speakers; records; stuffed animals; 3 D pictures; Avon; luggage; coolers; horse shoes; set Wil-son golf clubs; Arcade Alley golf game; other golf items; light fixtures; wheel chair; walker; metal file cabinets; canners; canning jars; new turkey fryer; Skutt 181 kiln; binocular; assortment of other items.

OTHER

Makita chop saw; twin cylinder

gas powered portable air compressor; 1 1/2 ton cherry picker; 1/2 sack cement mixer; bench grinder; gas power ice auger; ice fishing hut; fiberglass portable fish cleaning table; propane heater; 25x50 telescope; post driver; 12 gal yard sprayer; Ride & Beauty sprayer; yard fertilizer; pr. aluminum ramps; Workmate; 250 gal propane tank; Toro TC400 gas weed eater; 10' tube & wire gate; 2-20' metal gates; welding table; lawn sweep; T posts; chain link dog pen; plastic yard storage container; yard edger w/gas engine; manual tire changer; 2' & 4' yard fence; trailer hitch lift; 2-3 wheel bikes; yard fountain; flower planters; bird feeder; lawn furniture; yard pond ladder; bird houses; bird bath; lawn edging; case blue-rock; camper jack; yard art; cement blocks; hub caps; 20' 3" pipe; 3 solar panels; 100 lb propane bottles; pet taxi; live animal traps; power greaser; 4 piece scaffolding; business band radio tower; 2 yard gates; down spout; metal shelves; extension cords; van seats; air conditioner for tractor w/compressor; pickup tool box; heated pet mat; 11' x 95" screen house new; assortment tool boxes.

Note: Check web site for pictures at www.thummelauction.com.

RICHARD RUSSELL ESTATE

Auction Conducted By
Thummel Real Estate & Auction LLC
Beloit & Concordia, Ks • 785-738-5933