

Since 1954

# GRASS & GRAIN

Published by AG PRESS

55th Year

No. 2

March 10, 2009

\$1.00



## Students rush for free ethanol in Manhattan

By Beth Gaines-Riffel,  
Editor

If you're wondering what it takes to attract college students to an event, take a page from the playbook of Kansas Corn Commission and the Renewable Fuels Association. On March 2, the associations offered anyone with a valid student ID a free tank of ethanol, T-shirts and free food. Did they come? The answer: "in droves."

The event was staged at the Manhattan Co-op, located just east of Manhattan. The facility sells E10, which is carried by many retailers in the area, as well as E85, formulated for the flex-fuel vehicles that are designed for the 85-percent ethanol fuel.

Mike Brzon of Courtland, who is currently serving as the chairman of the Kansas Corn Commission, helped man the pumps during the two-hour event. "We had a steady line of traffic that was up to a half-mile long at times," Brzon said.

Sue Schulte, communications director who handed out flyers as the cars approached the pumps, said that the students were lined up the entire time of the promotion which ran from 11 a.m. through 1 p.m.

Capturing the youth market is important to the fuels future success. "This gave us the opportunity to talk to hundreds of college students

and get them get them to think about renewable fuels like ethanol. I believe we accomplished a lot at this event, and it is just the beginning of a much larger effort," said Brzon.

The Manhattan/K-State event was the kick-off for a national campaign focused on college-aged consumers. Attendance was pushed with many forms of non-traditional media that are popular with students. Organizers talked to students on campus, advertised in the student newspaper and used Facebook and the e85challenge.com website.

"That's what this Flex Fuel Challenge is all about," according to Robert White, marketing director of RFA. "It's about utilizing viral marketing, going through websites like Facebook. We actually created e85challenge.com to mirror those so you can add friends, you can have discussions and post pictures and do videos so that others can work within that medium to promote renewable energy."

In addition to the Kansas Corn Commission, sponsors of the Flex Fuel Challenge include the United Sorghum Checkoff Program and the Kentucky Corn Growers Association.

While the draw was undoubtedly the free tank of ethanol, students could also receive additional fuel cards



Mike Brzon chairman of the Kansas Corn Commission pumps fuel for a KSU student while Robert White with the Renewable Fuels Association shares information about ethanol during last Monday's fuel rally.

and T-shirts for filming short video "commercials" during the promotion. According to Schulte, about 40 video clips were shot at the event as students took turns answering the question "What Does Renewable Mean to You?"

The videos will be posted on the e85challenge.com website. The Manhattan event kicked off a larger on-

line effort to spread the word about renewables and to encourage others to submit videos on renewables. The Flex Fuel Challenge is looking for creative ideas on alternative energy and encourages participants to spread the word to get votes for their video submission. The entry with the most votes will win a MacBook Air laptop computer.

## Kansan to hold national wheat leadership post

By Beth Gaines-Riffel,  
Editor

Kansas, known to many as the breadbasket to the world because of the wheat production found here, is also home to producers who are willing to give of their time to represent the industry. At the recently completed National Association of Wheat Growers board of directors meeting held in conjunction with the Commodity Classic in Grapevine, Texas, Jerry McReynolds of Woodston was elected first vice-president of the association.



Jerry McReynolds

McReynolds has been active in the NAWG, serving on various committees, including the environmental policy, domestic policy, nominating and budget committees as well as the U.S. Wheat Associates/NAWG joint biotechnology committee.

Prior to taking a national role, he also was a leader in the state association, including all of the officer chairs. As KAWG president, he helped start the Kansas Farm Bill Coalition, the multi-commodity and multi-association group to discuss farm policy which was the first of its kind. He was also involved in the process that culminated the cooperative agreement between KAWG and the Kansas Wheat Commission.

In addition to being a wheat producer, his north-central Kansas operation also includes sorghum and a commercial cow herd in Rooks County.

"Jerry McReynolds possesses outstanding leadership skills that will serve the wheat industry well as he progresses through the NAWG officer rotations," says Dusti Fritz, chief executive officer of Kansas Wheat. "These next two years will be critical for production agriculture. Jerry's

*Continued on page 3*

## Protected pond offers multiple benefits for Brown County farmer

By Connie Pantle

John Geiger always dreamed of having his own pond with a floating dock — somewhere his children could swim and where he could have picnics and campouts. Because of conservation practices on his farm that dream has come true for the Brown County livestock producer. The initial purpose of the pond was to supply water for Geiger's 20 cow herd, however because of the water quality practices that Geiger also implemented, the recreational aspect was an added benefit.

After purchasing a 68-acre pasture a few years ago, Geiger said he had his work cut out for him. In order to prioritize the work needed on the Brown County pasture, Geiger completed the River Friendly Farm Project (RFFP) environmental self-assessment. Ed Reznicek, a field organizer with the Kansas Rural Center's Clean Water Farms Project (CWF) assisted Geiger in completing RFFP assessment. Joining Geiger for an evening session working on the notebook were his brother and a friend, who completed assessments of their



Having a pond that is clean, beautiful and useful was the goal of John Geiger. This location is no longer just a place to water cows, but for the family to enjoy.

own farms. The buddy approach, or working with a friend or family member, according to Reznicek, can be a rewarding way to approach the environmental assessment and whole farm planning. "We started on the notebook late afternoon, took a short break for supper, and then finished the notebooks that same evening. It took a total of about four hours," stated Reznicek. "Plus, we had some stimulat-

ing discussion on issues brought up in going through the notebook."

Geiger likes to think of the health of the watershed as a whole with the quantity and quality of water as the focus. "Water is life. Without it we wouldn't be here." Despite Geiger's pre-existing awareness of conservation practices and water quality, the notebook caused him to think of it in terms relative to his own operation.

He said the figures and numbers of his own situation gave him insight. "It causes you to reassess your own situation — and find something you may not have thought of," he said.

The three priorities the RFFP notebook highlighted for Geiger included: water quality related to livestock entering the creek; the need for alternative watering sources in the pasture, and grassland management to improve grazing and manure.

Geiger determined the solution to his need for a water source was to build a small pond (under one acre) and install a waterer below the pond's dam. This would eliminate the need for the cattle to use the small creek as a drinking water source. The creek drains into a tributary of the Wolf River. In addition to eroding the creek banks, the cattle also deposit manure into the creek while drinking. To offset some of the costs involved in installing an alternative water source and fencing the pond, Geiger applied for and received cost-share through KRC's CWF-RFFP. Geiger said the initial pur-

pose of the pond is "to retain water and create a water source for cattle." "The pond grabs that water and releases it slowly to reduce erosion," he said. After construction of the small pond, Geiger installed a concrete waterer below the pond dam. Geiger said Reznicek suggested the waterer — a 200-gallon concrete tank partially buried in the pond's dam. "It is a better long-term option — it will be here for years to come," Geiger said.

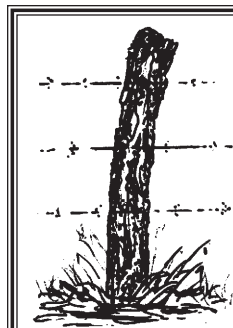
Using a permanent high tensile wire electric fence, powered by a solar panel and battery, John excluded the cattle from the pond to reduce erosion as well as bacteria contributed from the cattle. He planted grass along the banks of the pond and plans to flash graze the pond area "to get the grass knocked down and allow the cattle to spread the seed" he said. According to Reznicek, this allows the cattle to utilize and maintain the forage.

Geiger emphasized the importance of adequate grass around a pond. "Grass filter strips above the pond filter the water from a rain event, before the water

reaches the pond," he said. "It is important to have grass to catch all those nutrients from the chemicals and manure." Another issue in Geiger's pasture is brush control. Cedars and hedge trees were allowed to invade the pasture and choke the grass. In the areas where Geiger cleared the invasive

*Continued on page 3*





# The Learning Post

By Gordon Morrison  
Concordia Rancher and  
Former Agriculture Educator

## Views On These Uncertain Times

In my column two weeks ago I invited readers to express their thoughts in regard to our economy, investments, survival and how they were planning to cope with governmental changes. I received a letter from one reader who expressed his concerns at length, covering a number of topics. His family roots are in ranching and he is involved in agriculture. He gave me permission to publish his comments but wishes to remain anonymous to the readers. The following is taken from his letter.

The FDIC has only about enough money to pay off the depositors of two or three of the mega-banks. The system worldwide is in such a wreck that most people don't even know how many dollars in troubled assets are on the books. The investment banks and mega-banks leveraged themselves up to 100:1. There is about \$800 trillion in derivatives and credit default swap agreement debt on the books of insurance companies and financial institutions worldwide. That is 15 years of total worldwide GDP. And the losses get bigger as the underlying values decline — daily.

The "two cows" analogy of how AIG failed explains how it happened (and just how bad it may be). You have two cows, and John borrows one of them so he can sell it for \$100. He gives you \$10 as collateral. You buy your neighbor's cow for \$100 by borrowing \$90 from the bank and using John's \$10 to make up the rest. You brag up your assets. You own two cows plus one that John owes you — total work of \$300 and you owe only \$90. A third of the country goes vegetarian. Your two cows one worth \$200 are now worth only \$140. You express confidence that you could sell you assets at this depressed price and pay off all your debt. You hold on to your cows because the market is "dislocated" and someday, someone will want to eat beef again. The rest of the country goes vegetarian. Your two cows are now worth only \$2 each to guys who want to make dog food out of them. John buys another cow in the market for \$2 and gives it to you to replace the one he borrowed. You now have three cows worth a total of \$6. John wants the \$10 back that he gave you as collateral. The banks calls and wants their \$90 back. You call the Feds for a bail-out. Seriously, that is a small-scale illustration of what has been happening in the financial world.

As to preparing for the future, I have been slowly stocking up on ammunition and lately, some non-perishables. Ammo is hard to come by and I've heard a number of theories as to how that came about. Some involve conspiracies and some don't. I suspect it is some combination of them. Higher pricing late last year due to freight costs (fuel prices) led to more hoarding due to perceived future price increases and fear of government conspiracy to increase and/or control sales and/or attach traces to purchase. Manufacturers were caught with their pants down, not ramped up to produce for the new demand etc. My thinking is that if things come to a total meltdown, then food, water, and bullets will be the most desired (needed) commodities; that is, if Iran doesn't get nukes first.

I am also accumulating a small amount of currency and will continue to do this. I figure that in the event of a gigantic melt-down, currency might retain some value a little longer than money in bank accounts (numbers on a ledger sheet somewhere). I am also pulling in my own deposits into one local bank so that I can have almost instantaneous control of those dollars.

I read recently that the U.S. dollar and Euros might be asafe haven for now. I wonder also about the Chinese currency. They seem to be in the driver's

seat, being about the only ones buying new U.S. government debt. May be that is because they now make things, whereas we really don't do much of that anymore. The protection of workers was a noble cause, but it finally evolved into a situation where the U.S. could no longer afford to employ its own workers. It seems to me that history shows most powerful nations actually manufactured things in their own country.

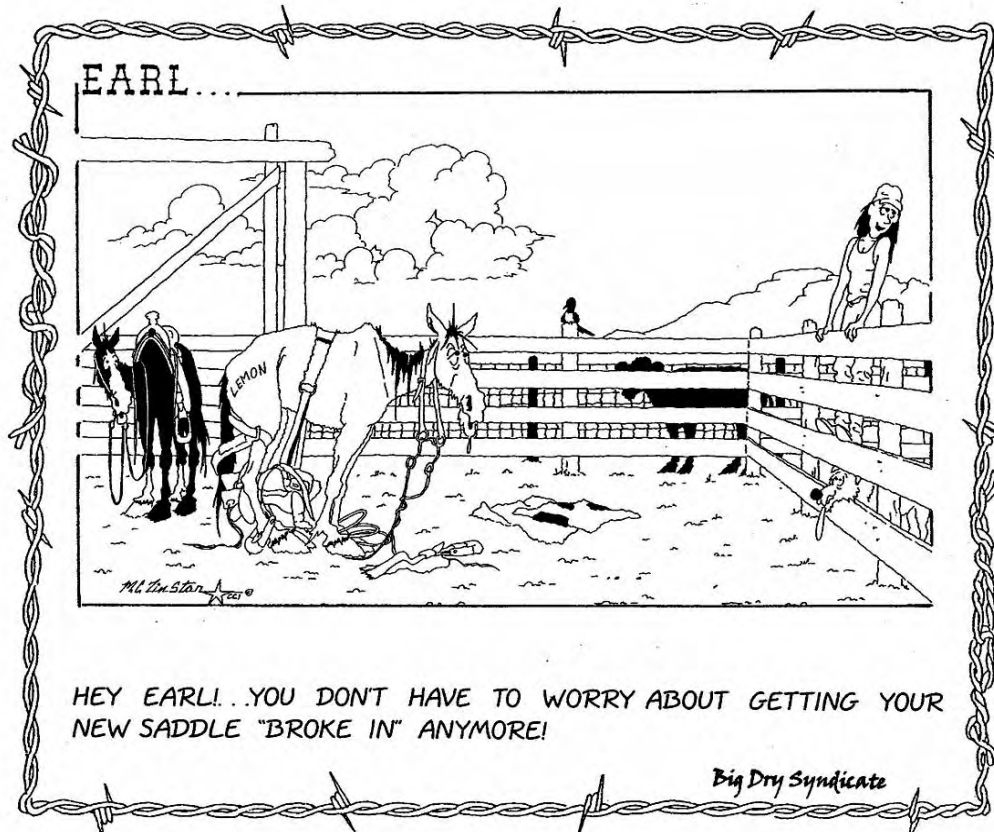
I wish I had acted earlier to change at least some of our IRA equity mutual funds to some form of U.S. treasury notes, as I think they will have value at least somewhat longer than most equities. I guess that is already proven by the decline of about 50% in equity values. There are two mutual funds that hold 100% U.S. Treasuries that I might have used. I could still use them for what is left of my equity positions but I would be selling out at 50 cents on the dollar, which might still be a smart move, but I am not yet quite willing to take that kind of hit. After all, you don't take the hard loss until you actually sell. The Treasuries have a low return but I am now more concerned with the return of our money than the return on it.

I think gold and silver are overpriced now and I really think we will see more deflation before we see inflation as an ultimate result of the massive money manufacturing the Feds have done over the past five months. As people hoard dollars and delay purchases because they believe things will be cheaper tomorrow, deflation will take hold. At some point, when inventories are finally depleted and if the economy shows any flicker of life, massive inflation such as seen in the past in many Latin American countries will take hold — at least, that's my theory. Just prior to that will be the time to buy precious metals.

This morning I read where Barney Frank is all over Northern Trust for sponsoring the recent Riviera golf tourney "for the second of a five-year contract" and related entertainment for their high-end clients. Northern Trust is a profitable bank that did not ever seek TARP funds but finally agreed to take them at the government's request. Among other politicians, Frank made a big deal of publicly insisting that since they received taxpayer money, they return to the U.S. government every cent they spent on the above sponsorship and entertainment. Northern Trust didn't really want the TARP money to begin with. It is another case of elected officials putting on an act for the gullible and uninformed to see — a typical action for one of the parasites that actually had a major hand in most of the current economic problems.

After watching the "performance" last night of the President and Congress when he addressed them, saying and applauding to all the right things to make the gullible think they really care about us, I remembered something I once read about the survival of most democracies. They will survive only about 200 years, until the elected learn that the gullible electorate will continue to support them as long as they promise handouts, even when the standard of living never actually improves for them.

This may not come to pass, but I'd rather be a little prepared than caught off guard. I truly believe God will take care of us in one way or another, but I don't want to end up like the guy in the flood who, after turning down early evacuation help from the local fire department, then from a guy in a boat and finally a man in a helicopter, asked God, "Why didn't you save me? I thought you would help me." And God answered, "I sent you the fire truck, the boat and the helicopter."



## Over the Barn Gate

By Beth Gaines-Riffel

When you get this edition in the mail or online, as the case may be, I will be channeling Dorothy: "Toto, I don't think we're in Kansas any more."

Last week I was in the throes of preparation for a trip to Washington, D.C. to watch grassroots lobbying up close and personal — and to get a better handle on those issues that farmers and ranchers across Kansas feel are pressing enough to make arrangements to leave their operations for a few days to share them with members of Congress. But I don't want to spoil the surprise, so I'll save that for next week.

Being ready to be away from work and family for more than a 24-hour period of time is no easy feat. Just like a dairy that requires twice-a-day milking, the schedule of a weekly publication is no different. The deadlines come and go with little regards for who is missing in the picture. So a little more prep work was required in order that this edition really did arrive in the same timely fashion as usual.

I would be remiss if I didn't give public praise to those who filled in for me on Monday. Truthfully, it probably was a lot smoother process than the "normal" schedule. I can promise that the madness will soon return.

But getting the family prepared for my absence is a whole 'nother ballgame. Since overnight travel isn't a big part of this gig, convincing my soon-to-be six-year-old that she shouldn't miss me or worry too much was easier said than done. It did help smooth things over when I mentioned the shopping that I would be able to do for her birthday, which happens a little bit later this month.

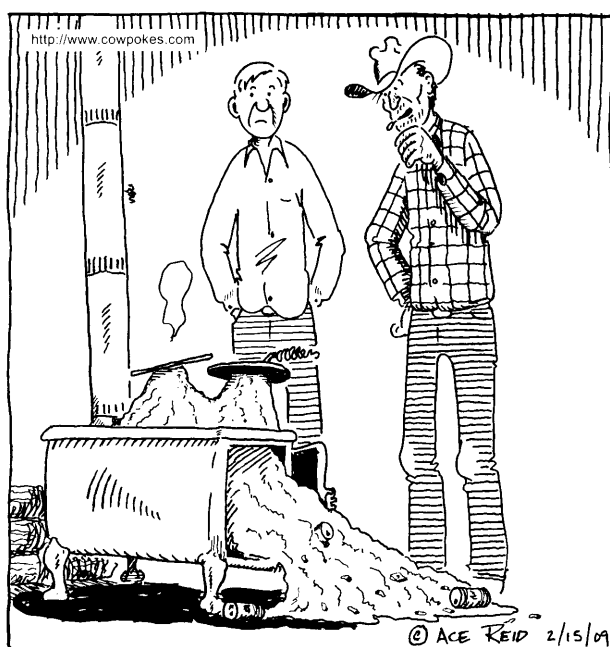
Meals were planned (with the realization that my menu suggestions would be largely ignored), laundry caught up and the fridge stocked with all the easy "go-to" items that Dad would be willing to put together for fast school-night meals. All well and good, but as I looked in the fridge before I left for the airport, I couldn't help but wonder how many times macaroni and eggs (yes, that is one dish together) or pancakes might appear on the table before my return. Oh well.

But probably the biggest thing that I'm anticipating, no, the word is dreading, is the time change. Not only will I be working on Eastern time, but spring another hour forward and it's highly likely that I will be a walking zombie. I'm packing a second alarm, just in case.

As with most trips to D.C. there is so much to do, and not nearly enough time to do it. But I will certainly do my best.

That's all for now. I'll chat with you next week, "Over the Barn Gate!"

## COW POKES® By Ace Reid



"If it don't warm up soon, somebody is gonna hafta clean out that stove!"

GRASS & GRAIN®

785-539-7558

Fax 785-539-2679

Editor — Beth J. Gaines-Riffel  
gandgeditor@agpress.com

— Advertising Staff —  
Steve Reichert Peggy Giles  
Frank J. Buchman  
agpress2@agpress.com

GRASS & GRAIN (USPS 937-880)

The newsweekly for Kansas and southern Nebraska, published each Tuesday at 1531 Yuma (Box 1009), Manhattan, KS by Ag Press, Inc. Periodicals postage paid at Manhattan, Kansas. Postmaster send address changes to: Ag Press, Box 1009, Manhattan, KS 66505.

Subscription — \$75 for 2 years. \$41 for 1 year, includes sales tax. Outside Kansas, \$48 for 1 year, \$89 for 2 years.

MEMBER OF  
Associated Press

www.grassandgrain.com



Conservation project resulted in many benefits for northeast Kansas farm family

Continued from page 1

trees, he sees signs of native grass returning. "I love seeing the natives," he said, pointing out side oats grama, little bluestem, lespedeza and wild flowers. "It is a good sign to see native grasses," he said.

With the return of the native species, Geiger is encouraged by the variety re-

turning to the pasture. "Biodiversity is the key salad bar pasture," he explained, referring to the theory that the cattle's diet should consist of a variety of ample grasses, forbs, and legumes. "The cattle have more choices," he said. To encourage additional biodiversity, Geiger plans to sub-divide the pasture into three paddocks. He will follow a manage-

ment plan and move his herd into a new paddock once a week. Geiger explained this is a realistic goal for an operation the size of his.

In addition to the diversity of plant species, Geiger observed a variety of wildlife in his pasture including bobcat, deer, turkey, rabbits and coyotes. To encourage diversity, Geiger

said he will leave some of the timber as a "native area" instead of clearing the pasture entirely. "I like trees — I'll leave a little of it wild,"

he said. While Geiger admits he has his work cut out for him, he's encouraged by the progress he's made so far. And an occasional trip to the

pond reminds him of the importance of water quality on his farm. "Seeing the kids jump in and swim makes it all worth it," he said.

McReynolds continues service to NAWG as vice president

Continued from page 1

vision and common sense will certainly be an asset for wheat farmers."

McReynolds holds a BS in agricultural economics from Kansas State University. He has participated in the Kansas Agricultural and Rural Leadership Program and in NAWG's Wheat In-

dustry Leadership of Tomorrow program.

He and his wife, Diane, have three grown children. In 2003, Jerry and Diane were the recipients of the Kansas Master Farmer and Master Farm Homemaker Award, given by the Kansas Cooperative Extension Service and Kansas Farmer mag-

azine.

NAWG officers typically "run the chairs" for five years after being selected as secretary-treasurer, though they all must be interviewed and recommended by the NAWG Nominating Committee and approved by the NAWG Board of Directors on an annual basis.

SUBSCRIBE TO 785-539-7558  
GRASS & GRAIN or online at:  
grassandgrain.com

REAL ESTATE & TREES  
AUCTION  
SATURDAY, MARCH 21 — 10:00 AM  
5439 S. Hydraulic, WICHITA KANSAS

DIRECTIONS: From 47th St. S. & Hydraulic, South approximately 1 mile to Auction (Formerly Meyers Nursery).

REAL ESTATE OPEN HOUSE Mon., Mar. 16th 5-7 PM. PREVIEW OF TREES Fri., Mar. 20th 12-4 PM.

125-150 TREES WILL BEGIN SELLING AT 10:00 AM • OWNERS: Marshall & Suzanne McHenry.

The entire property is a complex totaling approximately 15 acres, more or less. It is a well established Wichita landmark having operated as the areas largest nursery for 75 years. The overall property is divided into four tracts.

REAL ESTATE SELLS AT NOON

TRACT#1

This is the highly improved part which covers more than 5 acres (more or less). All of the improvements were built in 1992 at a cost in excess of 1.5 million dollars. The following is a list of the improvements:

A. Showroom and Offices

80' x 114', 9,120 square feet with 12' sidewalls. Sales room has four 5-ton roof mounted heat and air units. The finished office area is 40' X 52'. This contains 3 offices, break room, 2 ADA restrooms, and a security room. There are 5 walk-in doors and a 10' X 10' garage door in the building. The concrete parking lot has 75 spaces and the building is connected to city water and sewer.

B. Showroom green house

Approximately 15,000 square feet Dutch fabricated, V & V Noordland green house. It is attached to the showroom and has 4 walk-in doors which connect the two. There are two 10' X 10' doors and the floor is paved. A priva computer system controls the mechanical functions.

C. Warehouse/shop

50' X 166', 8300 square feet with 16' sidewalls. The building has four 10' X 10' overhead doors and one 16' X 16' truck entry. There is a large break room which is air conditioned. The two restrooms both have showers. The building has overhead radiant heat. The electrical service is 3 phase 450 amp.

D. Rear Greenhouses

9 units, 30' X 100' each Quonset type, gutter-connected, manufactured by Stuppy. Lexan sidewalls, paved walkways, and 450 amps 3 phase electric.

LEGAL DESCRIPTION —If property sells as a separate tract the cost of the survey will be divided equally between the buyer and seller, if survey is required.

TRACT #2

This tract consists of a house on approximately 3/4 acre (more or less). This 3 bedroom, 2 bath ranch style home has approximately 1450 total

square feet per the Sedgwick County Court House records. This home has a fireplace, half basement and a large two car detached garage. This home has been remodeled and is in good shape.

LEGAL DESCRIPTION — If property sells as a separate tract the cost of the survey will be divided equally between the buyer and seller, if survey is required.

TRACT #3

There is approximately 2.5 acres (more or less) with 220' of Hydraulic frontage and city water.

LEGAL DESCRIPTION — If property sells as a separate tract the cost of the survey will be divided equally between the buyer and seller, if survey is required.

TRACT #4

This tract consist of approximately 7.71 acres (more or less) south of tract #1. This property has city water, city sanity sewer, & city storm sewer available. There is approximately 641' of frontage on Hydraulic and 560' of frontage on 55th Street.

LEGAL DESCRIPTION — If property sells as a separate tract the cost of the survey will be divided equally between the buyer and seller, if survey is required.

If you are looking for a location to move or start your landscaping, nursery business, or other garden type business then don't miss this great opportunity to purchase this property at AUCTION!! This is a wonderful location and is ready for that new owner to move their business in and begin operation this spring.

LEGAL DESCRIPTION: BEG 319.17 FT S NE COR SE ¼ SE ¼ TH S 363 FT W 560.17 FT N 20.04 FT TO S LI NE1/4 SE1/4 SE1/4 W 100 FT N 345.96 FT E 659.92 FT TO BEG EXC E 50 FT FOR RD SEC 21-28-1E.

TAXES: General taxes \$11,811.40, Special Taxes \$5.50, Total Taxes \$11,816.90.

Legal information obtained from Sedgwick County Courthouse records.

Concessions available. Go to our website to view more pictures of this auction.


FORMERLY MYERS NURSERY

SWENSON

REAL ESTATE & AUCTION SERVICE INC.  
www.swensonauktion.com

316-776-1302  
106 N. Rose Hill Rd., P.O. Box 441, Rose Hill, KS 67133  
Diana Swenson, Broker/Owner  
Conrad Swenson - Auctioneer • Rex Childs - Auctioneer  
Don Howell - Sells Assoc./Auctioneer  
Jeff Burbach - Set Up Forman

GROW NATURE'S POWER PLANT  
EASTERN GAMAGRASS  
Ideally suited for management intensive grazing systems.



• Excellent Quality • Native Warm Season Perennial  
• High Tonnage • Widely Adapted & Flood Tolerant  
• Fast Regrowth • Improved Varieties: PETE & IUKA

CUSTOM PROCESSING and COMPETITIVE PRICES  
Call 1-800-367-2879 and ask for our free color brochure.  
Gamagrass Seed Company  
70225 656 Avenue, Falls City, NE 68355 email us at: info@gamagrass.com

AUCTION  
CLAFLIN, KANSAS  
SATURDAY, MARCH 28 • 9:30 A.M. (SHARP)  
LOIS STEINER POA, AUGUSTA HUSLIG - SELLER  
AUCTION LOCATION: Claflin Community Center, 220 Second Street, Claflin Kansas  
ANTIQUE FURNITURE • ANTIQUE & COLLECTABLES • SHOP TOOLS  
LAWN MOWER • HOUSEHOLD APPLIANCES • HOUSEHOLD



ANTIQUE FURNITURE COLLECTABLE  
Detroit Jewel Gas Stove on Legs • Kerosene 2 Burner Stove • Trunk • Steamer Trunk w/Key • Metal Child's Chair • Wooden Child's Chair • Shop Table • Wash Bench • Wooden Drop Leaf Table • Wooden Kitchen Table • Wooden Shelf • Icy Ball Cabinet made by Crosley Radio Corp. (Square #67137) • 2 Barrel Back Chairs • Smoke Stand • Round Wooden Shipping Barrel • Green Bench • Full Size Tin Bed w/Springs • Gas Fireplace Heater • Curtain Stretchers • Chrome Drop Leaf Table w/ 2 Chairs • Square Pedestal Extension Table w/Claw Feet, Extra Leafs (48" x 36" Enclosed, 120 Yrs. Old) w/ 6 Chairs • Singer Sewing Machine (Converted to Electric) • Cedar Chest w/key • Cedar Handkerchief Box • Dresser w/Mirror • 3 PC. Ornate Bedroom Set, Full Size Bed w/ bedpost, Dresser & Vanity w/3 Mirrors • Rocker • Record Stand • Advertising • Houston Lumber Co. Yard Sticks • Wickert Garage • Wallis Tractor • Farmers Merchants State Bank, Claflin • Buehlers Meat Market, Claflin • Farmers Mill & Elevator, Albert, Ks. • People Market (Phone 66) • Ray's IGA, Claflin, Ks (Phone 10) • Claflin Grain Co. (Phone 71) • Claflin Flour Mill Tape Measure • H.L. Galliat Claflin Pencil • Salina Terminal Elevator • Pocketknife Claflin, KS • Ellinwood Chamber of Commerce Fly Swatter • Clothespins Vold Milling Co. Ellinwood • Union Appliance, Independence, Ks, Antique Clothespin Bag Wolf Milling • Antique Spoons • Tin Soap Container - Pie Edger • Tin Eye Glass Case • Child's (Beats Any Thing Egg Beater ) • Bottle Openers • Cheese Cutter • Clothes Pins w/Wire Rings • Merklinger Grain Co. Claflin, Ks. • R.G. Dunn Cigar Plastic Container • Rouge & Powder Compact • Celouid Complete Dresser Set • Celouid Clothes Brush & Mirror • Celouid Manicuring Set • Puritan Brass Bank Box • Infant Jesus Robe • Large Asst. Aprons • Umbrella • Piano Scarves • Small Wooden Stand • Wooden Magazine Stand • Morrell Snow Cap Lard Tin • Oval Frame • Asst Old Prints • Asst Old Framed Prints • Wooden Iron Board • Wooden Clothes Rack • Asst. Lace • Patterns • Buttons • Nativity Scene • Needle Work Foot Stool • Old Bingo Set w/Glass Tiles • Old Bottle Openers, Coors, Mulebock, Etc. • Steel w/Bone Handle • Cast Iron Skillets All Sizes • Speckle Gray Enamel Wash Pans, Buckets, Pans • Rectangular Bread Pans • White w/Red Enamel Wash Pans, Buckets & Bowls • Crash Chief Wash Board • Feather Ticking Material • Large Asst. Wooden Boxes -Prune -Raisin -Apple- Etc. • 3 Large, Medium, Small Galvanized Wash Tubs • Ball w/Glass Caps Fruit Jars • Asst. Various Older Fruit Jars • Aqua Fruit Jars w/Glass Caps • Shaving Mirror • Old Pans of various sizes • Box Homemade Soap • Coffee Grinder • Hair Clippers • Glass Drip Coffee Pot • Tape Measure • Watkins, Dr. Miles, Etc. Small Tin Containers • Sadiron w/Trivet • Gas Iron w/Funnel & Pumps • Tobacco Tins • Electric Flat Iron • Food Chopper • Keatonse #10 w/Att. • Good Chopper Universal #10 • Meat Saws • Tree Saw • Old Farm Tools • Frozen Strawberry Tin • Bed Night Light • Bushel Baskets • Old Bread Pans • 1916-1917 Calendars, Odin Catholic Church • 1896 German Prints & Pictures • Lace Curtains • Embroidered Pillow Cases & Dresser Scarves • Doilies • Ladies Evening Dresses • Old Jewelry • Hat Pins • Hat Boxes w/Hats • Pin Cushions • 2 Little Girl Dresses • 1921-1928 Needle Craft Magazines • 1941-1955 Extension Magazine • 1941-1948 Messenger of Sacred Heart • 1905-1943 German Magazine (Armen-Sellen-Freund) • Gal. Jug w/Cork • Metal Caps for Glass Jars • Green House Hoosier Boy Tomatoes Basket • Wooden Tobacco Box • Fleming Coffee Tins • Odd Asst. Jars & Bottles • Full Set for 6 • Hand-painted China Dishes • Platters • Asst Fire King Cups • Casseroles • Brown & Gray Small Crocks • Egg Beater & Bowl • Vegetable Chopper • Crock Bowls • Salt & Pepper • 3 Ink Wells • Mermen Brushless Shave Jar • Large Asst Enamel Pans • Gray Speckled - Blue - Brown - Blue Speckled - Red & White Etc. • Set of Ink Pens • Jacklin Grinding Wheels 3" • 2 Cold Handle Fry Pans • Antique Oval Bread Pan w/Cover • Bakeware Tins • Laced Marigold Bowl & Compote • Carnival Glass • Depression Glass Green Plates • Carnival Compote • Depression Bowls • Pitcher • Measuring Glass • Cut Glass Pitcher • Butter Milk Pitcher • Juice Glasses • Frosted Glass Pitcher w/6 Glasses • German China Bowl 96 #9 • Cream Bottle • Cut Class Ruby Red (Worlds Fair 1934) • Bavarian Cream & Sugar • 12 Gold Edged 9oz Glass Set (Leaf Trim) • Vinegar Cruets • Eye Wash Glass • Pressed Glass Dished

• Serving Bowls • Large Serving Glass Plates • Pedestal Cake Plate • Small Flower Beaded Dishes • Crocksville China Co. Gravy Boat • Set of 12 China Dishes - Plates - Salad - Saucer & Cups -Berry Bowls • China Tea & Saucer Set • Glass Cookie Jar w/Chip • Relish Dish • Asst. Glass Ash Trays • Made In Japan Ash Tray • Pair Gold Candle Holders • Serving Bowl (Japan) • Homer Laughlin Serving Bowl #19N6 (Chip) • China Serving Bowls • China Bowl (F.J. Weber, Ellinwood, Ks.) Germany Child's China Cup • 4 Seasons Currier & Ives Tin Serving Platters • Tin Covered Casserole Set • Japan Salt & Pepper • Incense Burner (Japan) • Celluloid Geese & Fish • Milk Glass Vase • Set of 4 Ring Neck Pheasant Glasses • Kerosene Lamp • 4 Fire King Coffee Cups (Pheasant Design) • Old Plant Vases • 12 Green Depression Saucers • Set of 6 (H) Design Drinking Glasses • Set of 6 Flatomite Dishes • Brown Tea Pitcher (Japan) • Cream & Sugar • Cut Glass Pitcher • Fish Vase USA #845 • Electric Waffle Iron • Brown Covered Casserole Dish w/Lid • Green Santa Shoe (Japan) • Small Grape Design Vase • Christmas Carousal • Lace Dish (Italy) • Cat Pin Cushion (Japan) • German Wooden Plate • Old Flower Pots • Shawnee Planter USA #432 • Asst. Avon Bottles • Mirror (The Lischky D.C. Store, Great Bend ,Ks. • Stork Embroidered Scissors USA • The Fairmont Creamery Co. Ruler 6" • Old Spools of Thread • Pair of Vaseline Glass Candle Holders • Ornate Wooden Frame (Christmas Bell Design) • Asst, Mink Stoles • 4 Sets of Embroidered & Crochet Pillowcases • Lace Table Cloths • Dresser Scarves • Quilts Hand Quilted • Tied Quilts • Parlor Table Scarves • Ladies Collars • Satin Quilts • Horse & Buggy Lap Blanket & Shawls • Velvet Wall Hanging • Pillows • Pair Frosted w/Primes Lamps • Lunch Cloths • Full Size Bed Embroidered Linens • Embroidered & Crochet Full Size Bedspread w/Matching Pillow Cases • Large Asst. of 33 RPM Records • Big Band • Mitch Miller • Etc. • Buttons • Kodak Camera w/Box • Hot Water Bottle • Asst. 1901 German Books & 1889 English Books • Asst. Religious Items- Self Standing & Wall Hanging • Chamber Pot • Rug Beater • Kitchen Platform Scale • Sprinkling Can • Metal Lawn Chair • Large Wooden Plant Stand • Card Table

• HOUSEHOLD APPLIANCE & MISC •  
Roper Gas Cook Stove w/4 Burners • Sharp Carousal MicroWave • Whirlpool Heavy Duty Washer • GE Electric Dryer • BBQ Grill • Plant Stand • Asst. Electric fans • Floor Heater • 3 PC Corning Ware • Pyrex Ware • Kitchen Dishes • Silverware • Kitchen Stool • Coffee Mugs • Tupperware • Soup Kettles • Pots & Pans • Baking Tins • Angel Food Cake Pans • Floor Lamp • Slide Viewer w/Slides • Cooking Utensils • Asst. Cook Books • Rolling Pin • 2 Life Time Drip Coffe Pots • Crock Pot • Rival Salad Maker • Dormeyer Electric Mixer w/Bowls • Hand Mixer • Telephones • Swedish Style Massager • Toastmaster Toaster • Sunbeam 12" Electric Skillet • Set of Cutco Knives w/Sharpener • Wicker Baskets • Fire King Nesting Bowls • Wooden Jewelry Boxes • Asst. Suit Cases • Lamp • Blue Side Chair • Stereo/Radio Console • 2 Weather Alert Radios • AM/FM Radio • Omron Auto Blood Pressure Machine (New) • Large Asst. Yarn & Crochet Thread • Sewing Notions • Material

•LAWN MOWER & SHOP ITEMS •  
Super Cutter 22" Push Mower • Asst. Shop Tools • Nails • Shovels Etc. • Saw Vice • Window Screens • Stool • Shop Bench • Utility Stands • Clay Flower Pots • 2 gal Weed Sprayer

Note: Lunch Will Be Served by Knights of Columbus Restrooms Available  
Terms: Cash or Good Check  
Any statement day of sale takes precedence over any printed or oral matter.  
Call Lois Steiner, POA 620-587-3972 Home 620-992-7016  
Jerry's Cell 620-992-7017  
www.victorbros.com or www.GrassandGrain.com/victor

**Victor Bros.**  
Auction & Realty, Inc.  
2505 Avenue E Box 5, Wilson, KS 67490  
Phone (785) 658-2254 or 2255  
FRANK L. PRINC, Auctioneer / Owner / Broker & Certified Appraiser  
785-658-2254 or 2255  
AUCTIONEERS • BROKERS • APPRAISERS

John Hlaus Associate Auctioneer	Shelly Whitmer Real Estate/Certified Appraiser PH 785/658-3525	Vicki Kaiser Real Estate PH 620/587-2326	J.L. Kasper Associate Auctioneer
---------------------------------------	--	--	--





## STUFFED SWEET PEPPER SOUP

\*\*\*\*\*

**Consign now, call: 785-331-5057**  
**Dale Douglass, Auctioneer • 785-448-3002, 785-448-8625**

Preheat oven to 350 degrees. In a large bowl combine cake mix, 1 cup undrained pineapple, eggs, oil and granulated sugar. Beat at low speed of an electric mixer for 30 seconds. Beat at medium speed 2 minutes. Pour into a greased 10-inch fluted tube pan. Bake 50 to 55 minutes or until a toothpick inserted in center of cake comes out clean. Cool in pan 15 minutes. Invert onto serving plate and cool completely. Drain remaining pineapple, reserv-

1-ounce package dry onion-mushroom soup mix  
1/2 teaspoon paprika  
1/4 teaspoon salt  
1/4 teaspoon pepper  
4 skinless boneless chicken breast halves (1 to 1 1/2 pounds)

Heat a large skillet over medium heat. Cook bacon until crisp then remove and

**M-F • 8-5:30 • Sat. • 8-1**  
216 South Fourth  
Manhattan, KS  
**785-776-1193**

\*\*\*\*\*

**Troy Novak • Munden, Kansas • 785-987-5372**  
**CLERK: Scott Clerking, Belleville, Kansas**

oak showcase; Victor phonograph; piano stool; soda fountain stools; Mission oak shelf; 4' oak church pew; oak plant stand; sewing rocker; camel back & flat top trunks; set double oak folding chairs; Indian prints (Tow Wac & Two Wives, Indian Territory, Young Kiowa Warrior, Chief Big Tree's Daughters, Big Tree Kiowa Chief); other pictures inc.: The Prospectors (C Russell), 1978 Clown/Bull Ted Watts print, 1978 Cowboy on Horse, Angel, Cupid Awake & Asleep, oval glass pictures; Christmas (lights, ornaments, aluminum tree, Santa, Whirl-Glo light shades, Rudolph tin game, plastic items); valentines; Easter items (German paper mache eggs & rabbits, plastic figures); St Patricks; Halloween (jack o lanterns, clickers, candy containers, noise makers, cats); Fourth of July items; assortment books (Gene Autry, Roy Rogers, baseball, other); Sessions clock; Toys inc.: Ohio Art sand pails, watering can, sand sieve, shovels, "Bear Red Stroller", Little Red Riding Hood & Humpty Dumpty dishes, Chain pail, tops; Griswold cast iron toy; child's dishes; counting boards; doll trunk; Greyhound (ash tray, games, belt buckles, figures, books, programs); lighted ash tray; oval mirror w/hooks; Dazey 2 qt glass & metal churns; Revere clock; brass desk lamp; 20 pc. gray granite inc.: funnel, pitcher, pans, buckets; Hudson Bay blanket; copper boiler; brass fire extinguisher; was tub; Deering seat; Griswold no 8 waffle iron; Kelloggs & Minute Maid muffin tins; egg basket; kerosene lamps; bracket lamp; assortment of other collectables.

**Auction Conducted By  
Thummel Real Estate & Auction LLC  
Beloit & Concordia, Ks • 785-738-5933**

**GRASS & GRAIN • BOX 1009 • MANHATTAN, KS 66505**



**Kellee Rogers, Topeka:**  
**CHEESE CORNBREAD MUFFINS**  
7.5-ounce box yellow corn-bread muffin mix  
1/2 cup sour cream  
1/2 shredded Mexican cheese blend  
1/4 cup milk  
1/2 teaspoon salt  
Preheat oven to 425 degrees. Lightly grease a 6-cup muffin pan. In a bowl combine muffin mix, sour cream, cheese, milk and salt, stirring until smooth. Spoon batter evenly into muffin cups. Bake for 15 minutes or until lightly browned. Let cool in pans for 5 minutes. Remove.

\*\*\*\*\*

**Mary Rogers, Topeka:**  
**S'MORE BROWNIE**  
15 whole graham crackers, divided  
19.5-ounce package brownie mix  
3 cups miniature marshmallows  
Preheat oven to 350 degrees. Line a 9-by-13-inch baking pan with heavy duty aluminum foil. Spray with nonstick spray. Place 10 whole graham crackers evenly over bottom of pan, breaking cracker apart as necessary to cover bottom of pan; set aside. Crush remaining 5 graham crackers; set aside. In a bowl mix brownie mix according to directions. Pour over crackers. Bake for 18 minutes. Remove from oven and sprinkle evenly with marshmallows and crushed crackers. Return to oven and bake 10 minutes. Cool completely and cut into squares and serve.

\*\*\*\*\*

**Sandy Hill, Eskridge:**  
**MAPLE SQUASH SOUP**  
1 pound butternut squash, peeled, cubed & boiled  
1/2 cup butter, divided  
1/4 cup maple syrup  
3 tablespoons brown sugar, packed  
1 teaspoon cinnamon  
1/2 teaspoon ginger  
3 tablespoons flour  
2 cups chicken broth  
2 cups unsweetened applesauce  
1 cup Granny Smith apples, cored, peeled & chopped  
2 cups light cream  
Salt & pepper to taste

Combine squash with 4 tablespoons butter, syrup, brown sugar and spices; mash well and set aside. Melt remaining butter in a large pot over medium heat; add flour and cook for 3 minutes, stirring constantly. Blend in broth and cook until soup thickens. Stir in squash mixture, applesauce and apples. Cook over medium heat until warmed through, stirring often. Add cream and heat just until soup begins to bubble around the edges. Cool and refrigerate overnight. Reheat over medium heat until warmed through. Makes 6 to 8 servings.

\*\*\*\*\*

The remaining recipes are from Millie Conger, Tecumseh:  
**ASPARAGUS WITH PECANS**  
1 pound fresh asparagus, trimmed  
1/4 cup cider vinegar  
1/4 cup soy sauce  
2 tablespoons sugar  
2 tablespoons olive oil  
3 tablespoons chopped pecans  
In a large skillet bring 3 cups of water to a boil. Add asparagus, cover and boil for 3 minutes. Drain and immediately place asparagus in ice water. Drain and pat dry.

In a large resealable plastic bag combine vinegar, soy sauce, sugar and oil. Add the asparagus, seal bag and turn to coat. Refrigerate for up to 3 hours. Drain and discard marinade. Sprinkle asparagus with pecans.

\*\*\*\*\*

**CHEESE SOUP**  
1 1/2 cups chopped broccoli  
1/2 cup finely chopped carrot  
1/2 cup chopped onion  
2 cubes chicken bouillon or 2 tablespoons instant crystals  
1 quart water  
1 quart milk  
1 1/2 pounds processed American cheese  
1/2 cup butter  
1/2 cup flour  
1/2 teaspoon dry mustard  
Place all vegetables in water in a saucepan. Cook until tender. Scald milk but do not let it boil. Add cheese and stir until melted. In microwave, melt butter. Add flour and mustard and heat until thick and smooth. Add to cheese-milk mixture and heat. Stir in vegetables and water in which they cooked. Add salt to taste. Makes 2 quarts.

\*\*\*\*\*

**BROCCOLI CASSEROLE**  
1/4 cup butter  
1/2 cup chopped celery

1/2 cup chopped onion  
1 tablespoon garlic powder  
2 tablespoons flour  
1 1/2 cups milk  
2 cups shredded cheddar cheese  
(2) 10-ounce packages frozen chopped broccoli, thawed  
1 can cream of mushroom soup  
1/2 teaspoon salt  
1/4 teaspoon pepper  
1 sleeve Ritz crackers, crushed  
2 tablespoons butter, melted  
Preheat oven to 350 degrees. Lightly grease a 2 1/2-quart baking dish. In a skillet melt butter. Add celery, onion and garlic powder and cook for 3 to 4 minutes or until vegetables are tender. Add flour; cook for 2 minutes stirring constantly. Gradually add milk, stirring until smooth. Add cheese, stirring until cheese is melted. Add broccoli, soup, salt and pepper, stirring to combine well. Cook for 1 minute then spoon into baking dish. In a small bowl combine crackers and 2 tablespoons butter. Sprinkle evenly over broccoli mixture. Bake for 20 to 25 minutes or until browned and bubbly.

\*\*\*\*\*

**TOASTED PECAN BUTTER COOKIES**  
1 cup toasted pecan halves  
2 sticks unsalted butter

1 cup powdered sugar plus more for dusting  
1 tablespoon vanilla  
1/2 teaspoon salt  
1 1/4 cups flour  
Set oven at 325 degrees. Break each pecan half into 2 or 3 pieces. Cream butter and sugar until pale. Add vanilla and salt then reduce speed to low. Gradually add flour beating until mixed. Stir in

pecans. Cover dough and put in refrigerator until firm, about 15 minutes. Drop 2 tablespoon scoops of dough onto baking sheets with parchment paper. Bake until golden, about 15 minutes. Let cool on cookie sheet then transfer to wire rack and let cool. Dust with powdered sugar. Keep covered.

\*\*\*\*\*

### Free Online Recipe

Included as part of *Grass & Grain's* website is a "Free Weekly Recipe." You need not be a subscriber to view this recipe. Go to: [www.grassandgrain.com](http://www.grassandgrain.com) and at the bottom left click on Our Daily Bread Free Weekly Recipe. Some recipes will be selected from submissions received from area cooks while others may be suggested favorites. You may also share the recipe with friends and family by clicking on the "email page" button. This week's recipe is Pineapple Carrots from Millie Conger, Tecumseh.

## MARCH "Our Daily Bread" Recipe Contest Prize

### KitchenAid SOAP DISPENSER

Soap dispenser features:

- Easy to use soft oversized pump
- Soft Non Slip Base
- For use with Liquid Dish or Hand Soap
- Holds 17 fluid ounces



The winner each week is selected from the recipes printed.

Send us your favorite recipe. It may be a main dish, leftover, salad, side dish, dessert, or what-have-you. 1. Check your recipe carefully to make certain all ingredients are accurate and instructions are clear.

2. Be sure your name, address and phone number are on the entry. Please include a street address with your recipe entries. A post office box number is not sufficient for prize delivery. Allow 3-4 weeks for delivery. 3. Send it to: Woman's Page Editor, Grass & Grain, Box 1009, Manhattan, KS 66505. OR e-mail at: [agpress2@agpress.com](mailto:agpress2@agpress.com)

#### Back Pain & the DRX9000™



#### Common Causes of Back Pain

- The discs in your spine act as shock absorbers. Herniation or "bulging" of the discs may occur due to wear and tear. This is one of the most common causes of lower back pain.
- Disc degeneration can occur when the spongy disc dries out. over time or with injury, discs may dry out, tear and put pressure on the nerves. The result is muscle tension and back pain.

"The DRX9000™ is designed to relieve pain and promote healing."

### Non-Invasive. Non-Surgical.

With the DRX9000™, You Can Take Hold of Your Life Again!

- Reduce your back pain.
- Reduce your symptoms.
- Reduce your disability.
- Improve your quality of life

#### About the DRX9000™

• The DRX9000™ is effective in treating low back pain associated with herniated discs, bulging discs and degenerative disc disease, allowing patients to return to an active lifestyle.

#### Treatments on the DRX9000™

- Consists of 20 sessions over a period of six weeks.
- Each session lasts 30 minutes.
- Following each therapy session, a cold pack and/or electrical stimulation is applied to help restore muscle tone.

Now Accepting Blue Cross -Blue Shield

Dr. Scott D. Iversen  
630 Poyntz • Manhattan, KS  
Call Today! 785-776-7568

# GUN AUCTION

SATURDAY, MARCH 14 — 10:30 AM

Auction will be held at the 4H building at the fair grounds located on the North side of BELLEVILLE, KANSAS

#### GUNS

1. Allen Arms 1860 Henry replica; 2. Winchester 1894 lever action; 3. Remington 552 Speed semi auto; 4. Fox model B 12 ga double barrel; 5. Mossburg 500 AT 12 ga pump police gun; 6. Winchester model 1886 lever action 40-82 WCF; 7. Stevens 311-H 20 ga.; 8. Savage model 99; 9. Winchester model 62 pump 22; 10. Ruger model 77 bolt 30-06; 11. Marlin model 444 lever action Monte Carlo stock; 12. American Eagle 410 pump model 70; 13. Mossburg Palomino model 400 lever action 22; 14. Winchester 1894 rifle 38-55 lever action; 15. Winchester 1886 rifle lever action 33 WCF; 16. Ithica side by side double barrel 12 ga double trigger; 17. Winchester 71 lever action rifle 348 WCF; 18. Winchester 1892 rifle lever action 25-20 WCF; 19. Winchester 1894 rifle lever action 3855 cal; 20. Remington single shot 32; 21. Remington single shot 22; 22. Ruger Black Hawk 357 revolver; 23. Colt single action revolver 45; 24. Colt New

Service revolver double action 44-40; 25. H & R 22 special revolver 9; 26. Navy Arms 1875 Remington replica 44-40 revolver; 27. Remington & Sons 1878 Remington 44 cal; 28. FN model 1905 made by Browning 25ACP cal; 29. Ruger Mark II semi auto pistol 22; 30. Rohm revolver 22 L,R; 31. Colt SA Frontier revolver 44-40 Winchester cal; 32. Winchester 1876 lever action rifle 45-60; 33. Winchester model 71 lever action 348 Winchester cal.; 34. Winchester 1901 lever action 10 ga; 35. Winchester 1895 lever action rifle 30-40; 36. Winchester 1890 pump rifle 22WRF; 37. Remington model 12 pump rifle 22; 38. US Springfield 1873 Carbine single shot 45-70 cal.; 39. US Springfield 1873 rifle single shot 45-70; 40. Winchester 1886 lever action rifle 40-82; 41. Winchester 1886 lever action rifle 45-70 WCF cal; 42. Winchester 1873 lever action rifle; 43. Winchester 1873 musket lever action 44 cal.; 44. Winchester 1873 lever action rifle

24" round barrel; 45. Winchester 1892 lever action rifle 44 WCF cal.; 46. Remington 1890 single action revolver 44 CFW cal.; 47. Colt single action Army revolver 44 special cal.; 48. Colt Frontier revolver 44-40 WCF cal; 49. Colt single action Army revolver 45 LC cal.; 50. Smith & Wesson double action revolver 44 Russian cal.; 51. Smith & Wesson Scofield revolver; 52. Colt single action revolver 44-40 WCF cal.; 53. Colt single action revolver 41 long Colt cal.; 54. Navy Arms 1875 Remington replica revolver 357; 55. Winchester 12 ga model 97; 56. Winchester 12 ga model 97; 57. Winchester 1890 octagon barrel 22; 58. Winchester 1890 octagon barrel 22; 59. Winchester model 1906 I.Ir. 22.

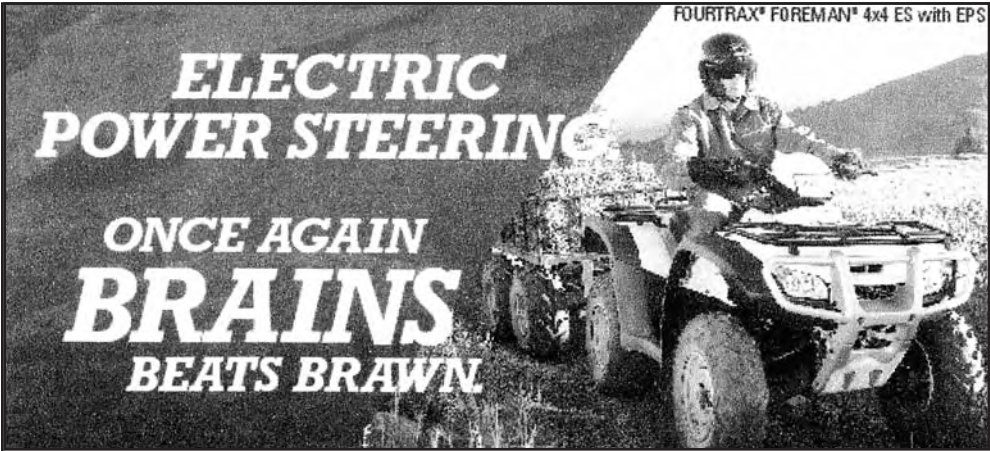
Assortment of holsters; assortment of ammo for all of the above guns; reloading equipment; several older reloading tools; Winchester & Peters pictures; assortment knives; 1933 American Rifleman magazines; assortment of paper items.

See last week's Grass & Grain for complete listing.

Note: Larry has collected guns for many years, there are several unusual fire arms. We will start with gun no 1. at 10:30 a.m. The guns will sell first. The guns will not be available for viewing until 8:00 a.m. on Saturday morning as they are stored in the bank vault. For pictures check our web site at [www.thummelauction.com](http://www.thummelauction.com).

#### LARRY KLIMA ESTATE

Auction Conducted By  
Thummel Real Estate & Auction LLC  
Beloit & Concordia, Ks • 785-738-5933



## Coffey County Honda

105 South Main, New Strawn, KS 66839

1-800-279-3650



honda.com UTILITY ATVs ARE RECOMMENDED ONLY FOR RIDERS 16 YEARS OF AGE AND OLDER. AT'S CAN BE HAZARDOUS TO OPERATE. FOR YOUR SAFETY BE RESPONSIBLE. READ OWNERS MANUAL. ALWAYS WEAR A HELMET, EYE PROTECTION & PROTECTIVE CLOTHING. BE CAREFUL ON DIFFICULT TERRAIN. ALL ATVs SHOULD TAKE A TRAINING COURSE. FREE FOR NEW BUYERS. ASK YOUR DEALER OR CALL ASI AT 800-887-2887. NEVER RIDE UNDER THE INFLUENCE OF DRUGS OR ALCOHOL. ON PAVED SURFACES, WITH PASSENGERS, AT EXCESSIVE SPEEDS, NO STUNT RIDING. RESPECT THE ENVIRONMENT WHEN RIDING. FourTrax® Foreman® and Best on Earth® are registered trademarks of Honda Motor Co., Ltd. (3/03) 08-0358



## Western, Rustic & Lodge Furniture & Accessories For All Of Your Decorating

*It's worth the drive just  
to see what we have!*

## HOME ON THE RANGE

4826 SW Topeka Blvd., Topeka, KS 66609 • 785-862-1942

Hours: Monday-Friday 10 AM to 5:30 PM • Saturday: 10 AM-5 PM • Sunday: 12-5 PM  
[www.rustichome.net](http://www.rustichome.net)



# Wind for Schools proposals deadline is April 15

The Kansas Rural Center (KRC) and Kansas Wind Applications Center at Kansas State University announce the Request for Wind for Schools Proposals. The deadline to submit request for proposals is April 15, 2009. Five rural schools will be selected to install 1.9 kW wind turbines in order to encourage integration of renewable energy education in their K-12 science curriculum. The Wind for Schools (WfS) program aims

to train young engineers for jobs in the rapidly growing wind industry, and to increase public awareness and understanding of wind power. Schools receiving WfS turbines are expected to incorporate education about wind energy into their science, math and social studies curricula, including how turbines work and how to collect, process and understand the data the turbines will provide. According to Dan Nagen-

gast, executive director of KRC and coordinator for WfS, "Our children will clearly be powering their world with renewable energy. We are in a transition from fossil fuels, and now is the time for them to explore and become comfortable with all these new forms of energy. This project opens the door to great opportunities for young Kansans." The criteria used for evaluation of applicant

schools include the following: a wind classification of class 3 or better; a high and open site; community awareness and desire; administrative support at the school, and science teacher(s) willing and able to incorporate the turbine into

school curriculum (with assistance). The project will install the Southwest Windpower Skystream 3.7, a 1.9 kW turbine suitable for residential use. With a blade diameter of just over 12 feet, the Skystream typically generates \$300 to \$400 worth of

electricity in a year. The Skystream is the first wind generator with the controls and inverter built into the turbine. For more information on the Skystream, visit the Southwest Windpower site at [www.skystreamenergy.com/skystream/](http://www.skystreamenergy.com/skystream/).

## AUCTION

### SATURDAY, MARCH 21 — 10:30 AM

Auction will be held at the farm located from the 4 miles North of GREEN-LEAF, KS. 3 miles East, 1/4 mile North (1522 Xavier Rd)

#### TOOLS & OTHER

30 ton shop built press; Craftsman 10" radial arm saw; acc torch set w/bottles; Craftsman commercial drill press; Milwaukee 12" chop saw; Atlas 618 metal lathe; Lincoln 220 welder; Power Mate 5000 watt generator; Foley Bell saw sharpener; Efcu chain saw sharpener; 6" table saw; hyd hose making machine; 3/4" air impact; 3/4" sockets; Milwaukee electric hammer drill; 6" vice; large assortment of combination wrenches up to 2"; socket sets; set Browning micrometers; large assortment reamers; hones; ring expander; set action speed wrenches; hammers; files; tap & die sets; assortment of pullers; chain saw mender & breaker; new chain saw chain; bench grinder; Paulson electric solder machine; Trucut armature lathe; Sunnen hone; Craftsman wood lathe; Dayton value machine; engine analyzer; diesel compression tester w/ adapters; diesel injector tester; hyd bead spreader; hyd bumper jack; transmission jack; 1/2 ton chain hoist; weld-

ing tables; router & equipment; miter saw; pullers; cylinder hones; assortment electric hand tools; large assortment alternator parts (rotors, fields, armatures, starter drives); large assortment of new small engine parts; 150 new lawn mower blades; large assortment of new hyd jack parts; assortment rebuilt hyd jacks; assortment hyd hose; pallet jack; parts cabinets; Chilton manuals; electric tree saw; pulleys; picks; wood traps; 500 gal propane tank; 250 gal propane tank; 13' x 12' car port; 10' x 12' metal building on skids; 8' x 12' metal building on skids; copper pipe; tractor chains; 20 T posts; dual wheel dolly; garden disc; Cub Cadet 72 needs work; 14 hp riding lawn mower; shop build orchard sprayer; Atlas tiller; used tin; assortment used lumber; swing set; 300 gal overhead gas barrels; 10 pieces of well pipe; assortment of iron; wheel barrow; large assortment of other tools & misc.

#### VEHICLES

1991 Mercury Capri XR2 con-

vertible needs head gasket; 1991 Ford Ranger 5 speed, 4 cy engine; 1990 Ford F150 automatic big 6 engine; 1992 Ford 1 ton flat bed pickup; 2 pickup box 2 wheel trailer.

#### ROCK EQUIPMENT, HOUSEHOLD & OTHER

Lapidary machine (saw, polisher); small rock polisher; 10" rock saw; Savage 22 single shot rifle; Mouser 8 mm rifle; Mouser 8 mm rifle w/scope & bipod; compound bows; gun parts; 110 window air conditioner; microwave; lift chair; Cornado chest freezer; refrigerator; counter top electric range; chrome dinette table; bookcase; child's table & chairs; child's dishes; dolls; iron baby bed; rocking chair; entertainment center; desk; file cabinets; 2 portable sewing machines; 2 antique trunks; coaster wagon; rollaway bed; roasters; canners; games; sewing supplies; pots & pans; large assortment of misc. household.

NOTE: Martin is moving, he has worked on small engines, alternators and jacks for many years. There is a very large assortment of tools and parts.

MARTIN WEBER & ALMA FINLAYSON

Auction Conducted By  
Thummel Real Estate & Auction LLC  
Beloit & Concordia, Ks • 785-738-5933

551 ACRES  
NE LYON COUNTY  
OFFERED IN  
4 TRACTS

## REAL ESTATE AUCTION

PASTURE  
TIMBER  
CROP GROUND  
DEER AND  
WILDLIFE

WEDNESDAY, MARCH 25 — 7:00 PM

Flint Hills Room, Best Western  
3021 W Highway 50 — EMPORIA, KANSAS

**TRACT NO. 1:** SE 1/4 25-15-12 Lyon County, Kansas. 160 Acres M/L SE corner Road 395 and Road U5 approximately 28 Acres crop, balance pasture and timber, great wildlife habitat, small pond, 2008 taxes \$403.20.

**TRACT NO. 2:** SW fr 1/4 19-15-13 Lyon County, Kansas. 151 Acres M/L adjacent to Tract No. 1 to the East on Road 395. approximately 75 acres previously CRP, could go back to crop production, balance grass, some hayable, timber, small pond. 2008 taxes \$480.66.

**TRACT NO. 3:** SE 1/4 24-15-12 Lyon County, Kansas, 160 Acres M/L NE corner Road U5 and Road 380 native grass pasture, tree lined draw, 2 ponds. 2008 taxes \$279.02.

**TRACT NO. 4:** S 1/2 SE 1/4 30-15-13 Lyon County, Kansas. 80 Acres M/L Northwest corner of Road W. and Road 380. approximately 21 acres crop ground currently alfalfa, balance timber pasture with small pond, excellent wildlife habitat. 2008 taxes \$221.46.

**ORDER OF SALE:** Bid by the acre, high bidder takes choice of 4 Tracts, by selecting one tract, combination or all tracts.

#### DIRECTIONS:

**From Harveyville:** West on 31 Highway 1 mile to Miller Road, then South 3 miles to 400th Road, West 1 mile to W Road, South 2 miles to 380th Road which is SE corner of Tract No. 4.  
**From Highway 56 and 99, 1 mile North of Admire:** Go North on Highway 99 to old school house at 390th Road, then East 1 mile, North 1/2 mile to 395th Road, then East 3 miles to U5 which is NW corner of Tract No. 1.

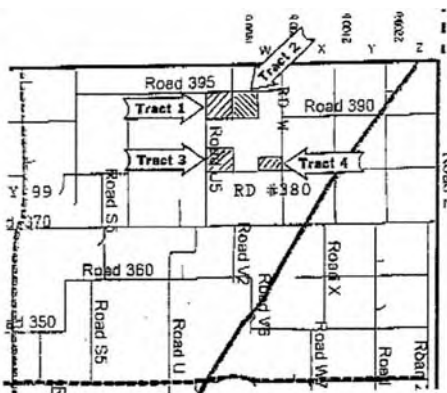
**TERMS OF SALE:** Successful bidder, sign purchase contract, 10% down day of auction with the balance due at closing on or before April 24, 2009, possession at the time of closing.

BRADLEY & MILLICENT PHILLIPS — SELLERS

PEARL REAL ESTATE AND APPRAISAL SERVICE, INC  
ST. MARYS, KS 66536 • 785 437-6007

Dennis L. Rezac, Auctioneer  
785-456-4187

Mike Pearl, Broker  
785-256-5174



**ing.** Buyer to have all inspections they deem necessary completed prior to auction. All financial arrangements must be made prior to auction, no finance contingencies will be accepted. Owners title policy will be paid half by seller and half buyer. Real Estate agents are agents of the Seller. The property is being sold in its present existing condition "as is". Statements made the day of auction take precedence over all printed materials. Not responsible for accidents.

**AUCTIONEER'S NOTE:** These properties offer deer and other wildlife habitats plus income from pasture and cropland. We are offering an additional 306 Acres under separate ownership to be auctioned on Saturday, March 21, 2009 that is adjacent to these properties. The combination of these sales gives the opportunity to combine 857 Acres into one unit. For more information and aerial map go to [www.rezACLIVESTOCK.com](http://www.rezACLIVESTOCK.com) and click on Rezac Auction.

## FARM EQUIPMENT CONSIGNMENT



SATURDAY, MARCH 21 — 9:00 AM

9008 East Lyons Creek Road  
JUNCTION CITY, KANSAS

Directions, From the 295 Exit of I 70, take US 77 South for 3 miles to Lyons Creek Road, then left (East) on Lyons Creek Road for 3 1/2 miles to the sale site in the vicinity of the Skiddy Road - Lyons Creek Road Intersection Or From the 299 Exit of I 70, take J Hill Road South 4+ miles to the sale site in the vicinity of the Skiddy Road - Lyons Creek Road Intersection. WATCH FOR SIGNS.

#### VEHICLES, TRAILERS & BOATS (Will Sell After The Tractors)

1978 Chevy C65 Twin Screw 427 5 Speed 2 Speed Axle Air Brakes Pintle Hitch Electric Trailer Brakes w/20 Ft Bed And Hoist (Very Few Miles On Overhaul), 1992 Ford F250 4X4 460 5 Speed Flat Bed w/Goose Neck Ball (130,000 Miles), 1990 Diamond D 24 Ft Triple Axle Trailer Dovetail w/ Ramps, 1992 48 Ft Stoughton Enclosed Trailer w/Shelves, Carpet & Tommy Lift, (Very Good), All Steel Bob Cat Trailer (Good), 14 Ft V Bottom Aluminum Boat & Trailer, 12 Ft Flat Bottom Boat, Mercury 7.5 Hp Out Board Motor, 100 Rod & Reels.

#### TRACTORS, FARM MACHINERY & EQUIPMENT (Tractors Sell at 1:00 PM)

1976 John Deere 4630 Cab, Air, Power Shift, 3 point Quick Hitch, Duals, 2000 Hours on Overhaul, Serial Number 4630P018830R, John Deere 3010 Tractor, (Diesel, Wide Front, 3 Pt (Very Good) S/N 301011T41086, 1947 Ford 8N Tractor, Ford 9N (Tractor Completely Restored Top To Bottom), IH Farmall H 12 Volt (New Overhaul, Paint, Sharp), S/N FBH 99849, IH Farmall 400 w/2 Point Hitch & TA S/N 13868, 27 Ft Deutz Allis 1400 Field Cultivator Nice, JD 3 Pt Spring Tooth, 10 Ft Pull Spring Tooth, Krause 3 Pt 10 Point Chisel,

Ferguson 3 Pt Chisel & Sweeps, 2 Row Weeder, IH 2 Row Cultivator, JD 13 Ft Wheel Disc W/ Cylinder, IH 8 Ft Pull Disk (Nice), JD FBB Drill, IH 3/16 Pull Plow, 2 Pt 2 Bottom Plow, JD 3/16 Hyd Pull Plow, 2 Bottom 3 Pt Plow, S & H Model 110 AFB 4X10 Feed Wagon, 5010B Electric 4 Wheel Running Gear, Colby 4 Wheel Hay Trailer, John Deere 1424 Hydro Swing 14 Ft Swather, New Holland 479 Swather Nice Always Shedded, New Holland Model 55 Rake, JD 39 7 Ft Sickle Mower, Woods 5 Ft 3 Point Rotary Mower, Rhino 72 inch 3 Point Finish Mower, John Deere 25A 3 Point 7 Ft Flail Mower, 3 Pt M F Sickle Mower, Bush Hog 3 Point 5 Ft Rotary Mower (Like New), 2 Bale Elevators 16 & 20 Ft w/Motor, Quick Tach Plate for Spear, Bucket for GB 660 Loader, 3 Pt Dirt Scoop, 12 Ft Box Blade, 2 Pt 6 Ft Blade, Demco 500 Gallon Sprayer W/ 32 Ft Booms, 2 Pt Post Auger, Continental Post Auger, Factory Built Log Splitter, Squeeze Chute, Manual Factory Head Gate.

#### FOUR WHEELER, TOOLS & MISCELLANEOUS

1989 Polaris 250 Trail Boss 4 Wheeler, Murray 42" Riding Lawn Mower, Craftsman 12" Band Saw Nice, 10" Craftsman Table Saw Good, Several Used Chain Saws, New Chain Saw Sharpener Still In Box: 110/220 Volt Portable Generator, Electric Pipe

Thawing Machine 110 Volt, 1 Hp 110 Volt 10 Gallon Air Compressor (Very Good), 2 Hp 220 Volt Air Compressor, Schaben 3 Point 50 Gallon Sprayer w/PTO Pump & Boomless Nozzle, Flat Belt Pulley For 10 Series John Deere Tractors, 2 John Deere 14.9X36 Tractor Tires w/Rims, 3-11LX15 Flotation Tires, 3 John Deere Front Tractor Tires w/Rims, 2-4 Drawer File Cabinets, Ceiling Fans, Book Case, Metal Lawn Chairs, Several Drop Cords, 75 Ft 220 Heavy Electric Cord, Equalizer Hitch For Receiver, Several Fiberglass, Wood & Aluminum Ladders, 100-Used 5 1/2 Ft Steel Posts, Aluminum Grill Guard For Chevy Pickup, Pickup Stock Rack, Bale Spear For Pickup, 20 Big Bales of Early Cut 2008 Brome 3-Trailer Loads Of Miscellaneous Shop Equipment & Tools Used Around The Farm.

**NEW TOOLS FROM S&S SALES (AIR TOOLS, CHOP SAWS, GRINDERS & BLADES, ELECT DRILLS, & BITS, JACKS, UTILITY TARPS, BUNGEE CORDS, BOOMERS, WINCHES, SCREWDRIVERS, WRENCH & SOCKET SETS, POCKET KNIVES AND COLLECTOR ITEMS, HAMMERS, CHISELS AND MANY MORE MISCELLANEOUS HAND & POWER TOOLS).**

For Information or adding consignments, Call Butch Hartman, Sale Coordinator, at 785-238-8466 or Cell 785-761-7900.

TERMS: Cash or check. Not responsible for accidents. Lunch by Holm Family.

U.S. LAND AND HOME



JAY E. BROWN  
Auctioneer  
785-223-7555

785-762-2266 • FAX: 785-762-8910 • E-mail: [jbrown@ksbroadband.net](mailto:jbrown@ksbroadband.net)  
[www.KSALink.com](http://www.KSALink.com) • [kansasauctions.net](http://kansasauctions.net)

GREG HALLGREN  
785-499-5376



The program, supported by the National Renewable Energy Center Laboratory, started in 2007 with five schools across Kansas. An additional five schools were selected in 2008.

For more information on the Wind for Schools project, for application criteria or for proposal format, please see the project website at <http://www.eece.ksu.edu/psg/wac/>. Or contact Ruth Miller at [rdmiller@ksu.edu](mailto:rdmiller@ksu.edu)

or [atnagengast@earthlink.net](mailto:atnagengast@earthlink.net). Request for proposals should be forwarded to Ruth Miller at [rdmiller@ksu.edu](mailto:rdmiller@ksu.edu) prior to the April 15 deadline.

Visit [grassandgrain.com](http://grassandgrain.com) for hundreds of upcoming sales from across the country!

# AUCTION

SATURDAY, MARCH 14 — 9:00 AM

Offering for sale at public auction, located at 200 N. Poplar (Engine Club), GOESSELL, KS.

### TRACTORS, TRUCKS & FARM MACHINERY

'96 JD 7400 MFD diesel tractor, 740SL loader, 7' bucket and joy stick, new tires, power quad trans., 3700 hrs., very clean; '77 AC 7060 diesel tractor, rebuilt eng.; '73 JD 4430 diesel tractor, 1588 loader, 8500 hrs., rebuilt eng., trans. 3000 hrs. back; '71 MF 1100 diesel tractor, rebuilt eng., trans. and injector pump; IH Farmall Super H tractor restored, new rear tires; Case Construction King diesel tractor, loader, needs clutch; JD 4010 tractor, needs work; '84 Gleaner L3 combine, 24' header, eng. underhaul 1 yr. ago; '79 IHC 1460 combine, 22' flex header; IHC 1460 combine; JD 9500 combine, 19' header; '73 Ford LN9000 twin screw truck, 20' silage bed, 370 hp. Detroit eng., 13 spd.; '74 IHC 1600 Loadstar truck, 16' bed and hoist, 345 eng., 4+2, 61,367 miles, 1 owner; '74 GMC 6000 truck, 16' bed and hoist, 4+2; '74 Ford 880 diesel twin screw truck, 20' bed, Allison trans.; '71 Chev. C-50 truck, 16' bed and hoist, 350 eng., 5+2, eng. overhaul 3,000 miles back; '70 Chev. cab and chassis truck; '64 IHC dump truck, 549 V-8 gas eng.; '58 Chev. truck, 13 1/2' bed and hoist, 238 eng., 4+2; '92 Ford F-150 PU; '88 Chev. 1 ton single rear wheel 4x4 PU, 454 eng., 4 spd., flatbed, bale mover; '88 Ford 3/4 ton PU; '78 Ford F-150 PU, rebuilt eng. and trans. 10,000 miles back; Chev. dual wheel flatbed PU; '49 IHC KB3, 3/4 ton truck; '98 Monte Carlo Z34, 2 door car, 3.8 V6 eng.; '92 Chev. Lumina Euro 4 door car; '95 Chrysler Cirrus 4 door car, 6 cyl.; '97 Ford Escort wagon; '89 Olds. Cutlass Supreme 2 door car, 2.8 V6 eng.; '85 Chev. commercial van, 45,000 miles; '70 Lincoln Mark III car, 54,000 miles; '65 Ford Fairlane car; '00 Hesston 856A round baler, net warp, monitor, 7500 bales; '88 Travalong 7x20 stock trailer, bull package, center slide gate, excellent; '78 53' drop deck semi trailer, dovetail and ramps; Crustbuster 30' DD grain drill, silver box; Dempco 500 gal. field sprayer, 45' booms; IHC 45, 28' field cult.; JD 7200, 6 row planter, liq. fert., monitor, radar, seed plates; 2 - JD 7000, 6 row planters; JD 1300, 6 row planter; Balzer silage wagon; JD 54 manure spreader, end gate; Hesston BP20 hay processor; '86 Spra-Coupe 220, 51' booms; 3 JD 1250, 6 row planters; JD 346 wire tie sq. baler; Welco 8 bale accum. and forks; IHC 8-16 grain drill; A&L 425 bu. grain cart, lug tires, hyd. auger, rollover tarp; 2 JD 5-14 plows; Case IH 4800, 26' field cult.; AC 4-14, 3 pt. plow; NH 310 sq. twine baler; IHC flare box; 4 wheel running gear; AC 600, 12 row planter, monitor; Kent 27' springtooth; 30' springtooth; '83 Gleaner 320 L-M flex header; Gleaner 630 L-M corn header, black; Gleaner 18' L-M rigid header; MF 20' header with 8 Hesston Head Hunters; header trailers; 4 wheel bale trailers; Vermeer 605F round baler, new belts; JD 8-16 grain drill; Hesston 5580 round baler; Krause 4200, 36' field cult.; Bush Hog 25' tandem disc; MF 36 side del. rake; shop built 12' speed mover; IHC 47 sq. baler; IHC 46 sq. baler; NH 495, 12' swather; IHC 5-16 semi mt. plow; JD 330 21' disc; JD 1000, 25' field cult.; IHC 8' drill with seeder; IHC 7', 2 pt. sickle mower; AC roto baler; AC 7' sickle mower; JD 100, 14' chisel; JD 3 pt. 6 row cult.; Krause 1900, 21' tandem disc; IHC 9',

3 pt. sickle mower; Krause 26' field cult.; AC 5-16 semi mt. plow; Hutchinson 47'x6" PTO auger; sm. PTO driven manure spreader; MF 3 pt. single row planter; 400 bu. grain cart; Hutchinson 41'x6" auger; Waldon dozer blade, fits Farmhand loader; NH 275 sq. twin baler; bale elevator; Westfield drill fill auger; Hay-Wrap 3 pt. bale wrapper; 2 wheel trailers; Ford loader; AC loader fits WD-D17; Krause 16' offset disc; Schaben 300 gal. sprayer on skid frame; Haul-Mor wood box on 4 wheel running gear; 6', 3 pt. cult.; Hesston Head Hunter units; NH 131, 54' overhead bale conveyor with dump; JD 3 btm. pull plow; 25'x6" auger; Adams road grader on steel; Moline box wagon on high steel running gear; JD 230, 22' tandem disc; Nobel 30' harrow attach.; Kent 34' field cult., walking tandems; JD 24T sq. baler; shop built 78'x18' tandem axle bumper hitch trailer; JD 400, 16' rotary hoe.

### MOWERS & FARM RELATED ITEMS

'04 Excel Hustler Super Z 50" deck, 28 hp. mower, 0 working hrs.; '00 Excel Hustler 2700, 60" deck, 27 hp. mower; '90 grasshopper 718, 61" deck mower; '84 Excel Hustler 275, 60" deck, 25 hp. mower, rebuilt eng.; grasshopper 18 hp. mower; Woods Mowing Machine 44" deck, 12 hp. mower; IHC Cub Cadet 1050, 50" cut, 20 hp. mower; JD 316, 48" cut, 17 hp. mower, new eng.; Ariens EZR 1440, 40" cut, 14 hp. mower; Snapper 8 hp., 33" cut mower; '00 Bombardier Traxtor 500, 4x4, 5 spd. 4 wheeler; new King Kutter 42" type O box blade; '80 Yamaha 175 Enduro motorcycle; '71 Honda SL 100 motorcycle; Honda 200 motorcycle; Winco 13,000 watt PTO generator on trailer; MW 220 volt air compressor; 2 wheel utility trailer with ramps; Ozark 16' boat with trailer; Evenrude 70 hp. motor; JD pull type yd. sprayer; Hay Buster chaff saver; 2 - 12', 9 - 10', 2 - 8' metal bunks; 4 round bale feeders; tire and wheels; L shape fuel tank and pump; stock tanks; 10 - 12' Priefert port. panels; 10 - 10' port. panels; Ritchie water; Luco 12 lb. cake feeder; 12 - 17'x3" pipe jts.; 4 - 20'x6" pipe jts.; new tin; IHC 15-30 fr. and rear steel wheels; IHC 10-20 steel ext. wheels; IHC 1-20 steel fr. wheels; IHC 10-20 and 15-30 rear steel wheels with centers out; parts washer; 30' telephone poles; 9 new rolls barbed wire; 12 woven wire rolls; 12 Clay farrowing crates; fuel tanks and stands; 100 plus fresh cut hedge posts; transfer pumps; Ford 300, 6 cyl. eng; 6 homemade calf shelters; 3 Western saddles; 300 sq. bales brome hay; 14 hp. Briggs eng.; lawn trailer; shop press; drill press; chest freezer; milo guards; metal toys; quick hitch; Bish adapter for L Gleaner; liq. fert. manifold with 110 gal. tank; grade 5 bolts; AC quick coupler hitches; firewood processor; skidsteer 48" pallet forks, 6' bucket, bale spear; welded wire panels; cattle head gate; 96 - 277 volt, 175 - 400 watt lights; 12 volt fert. spreader; 55 gal. 3 pt. 14' yd. sprayer; Schaben 22' boom sprayer; 350 gal. poly tank; 50 and 35 gal. tank on skid with hose reel; 25 gal. spray tank; spray hose; numerous rolls of 5' - 8' chain link fence with top rail and gates; 100, 110 and 210 gal. tanks; 31 - 1 1/2" Celotex insulation bd.; 32 - 3" Celotex insulation bd.; Lincoln welder/ generator.

TERMS: Cash day of sale. Statements made day of sale take precedence over advertised statements. Lunch provided by K & B Catering.

**VAN SCHMIDT • Auctioneer/Realtor**  
7833 N. Spencer Road, Newton, KS 67114  
**620-367-3800 or 620-367-2331**  
Schmidt Clerks & Cashiers

# TRAVALONG MADNESS DURING MARCH



THE WINNING POINTS  
ALUMINUM STOCK TRAILER  
6'8" OR 7'6" WIDE  
7' TALL  
EXTRUDED SIDES, FLOOR AND MORE  
TORSION AXLES  
5 YEAR WARRANTY  
RADIAL TIRES  
MAX PRO NOSE  
ALUMINUM OR TRANSLUSCENT ROOF

CALL ME FOR THE SCORE  
**ROCKING "M" TRAILER SALES**  
430 S. Colorado, Waterville, KS 66548  
Office: 1-866-261-2526  
or 785-562-6614  
Call for additional Rebates

GET A SLAM DUNK PRICE ONLY DURING MARCH MADNESS

6'8" X 20'	6'8" X 24	7'6" X 24'	7'6" X 28'
\$11,400	\$13,200	\$14,650	\$16,250
SCORE AN <u>ADDITIONAL REBATE</u> DIRECT FROM THE FACTORY			
\$800	\$900	\$1,000	\$1,100

## Learn Cattle Artificial Insemination at the Agtech A.I. School in Manhattan

Increase your operation's profitability and efficiency by learning the skills and techniques of A.I. in our complete, hands-on cattle A.I. class.



Call 800.367.4016 ext. 1 for class dates or email [tpatterson@agtechinc.com](mailto:tpatterson@agtechinc.com)

"We had ample opportunity to handle equipment and time in the cows. I really liked the one on one instruction during problems that we were having once we were in the cows. This is exactly what I was wanting out of this class, maybe more. I feel confident enough to breed my own cows to improve my genetics and relieve breeding costs incurred."

—Phil Williams, Follett, TX

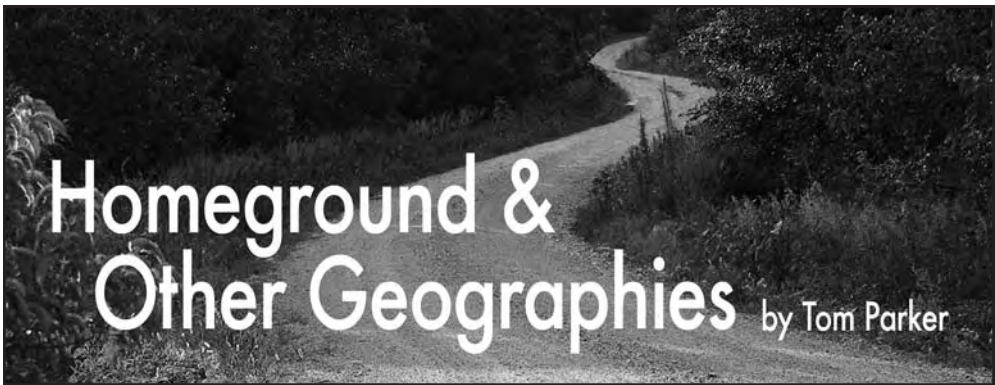
Learn all the skills of A.I. in 2 days for only \$395.00. Classes are held 8 am to 6 pm with lunch provided both days. A.I. kits and supplies are available for purchase.

Visit [www.agtechinc.com](http://www.agtechinc.com) to learn more about the Agtech training facility and all of our bovine reproduction classes.



Embryo Transfer & Artificial Insemination Products & Training  
[www.agtechinc.com/aischool](http://www.agtechinc.com/aischool) • 800.367.4016 • 8801 Anderson Ave, Manhattan, KS





# Homeground & Other Geographies by Tom Parker

## How does our garden grow?

Staked out, measured twice, a 40x80 foot patch of prairie only now beginning to green. While the tractor idles chuffing a plume of toxicity into the air, the farmer looks at the plot and shakes his head.

“That’s a big ‘un,” he says.

“It’s what the wife wants,” I say.

He nods and smiles. “Got it.”

Climbing onto the tractor he engages the motor and charges the field, the blade ripping the grass like a sheet of canvas.

All summer we toil, tomatoes in the southeast

corner, string beans to the north, rows of corn crenelating the western horizon, cukes, chiles and squash filling out the center. That vast acreage engulfs our pitiable labors. Velvetweed and dock flourish like a magician’s trick. Bindweed steals in and snares through the tender plantings.

## Deals on Wheels at Dick Edwards



2007 Ford Expedition XLT  
5 Door, 4x4  
**Sale Price: \$22,995**



2008 Ford Edge SEL  
AWD  
**Sale Price: \$22,995**



2004 Ford Explorer XLT  
5 Door, 4x4  
**Sale Price: \$10,995**



2007 Lincoln MKX  
AWD  
**Sale Price: 26,995**



2007 Camry LE  
**Sale Price: \$16,995**



2006 Jeep Wrangler  
4x4, 19K  
**Sale Price: \$16,995**



2006 Ford F150 XLT  
Ext. Cab, 4x4  
**Sale Price: \$20,995**



2005 Chrysler Town & Country  
Touring Ext  
**Sale Price: \$8,995**



2003 Lincoln Town Car  
Signature  
**Sale Price: \$12,995**



2008 Ford F150 XLT  
Crew Cab, 4x4  
**Sale Price: \$23,995**

Come see the  
**NEW 2009  
FORD F150  
SUPER CREW**



**DICK  
EDWARDS**  
FORD - LINCOLN MERCURY  
7920 E. HWY. 24  
MANHATTAN, KANSAS

www.dickedwards.net  
E-mail: sales@dickedwards.net



**800-257-4004**  
**785-776-4004**



The second year we move the garden to a smaller area nearer to the house. The 40x80 (the back 40, I call it) begins its irreversible slide toward wildness. Elms and maples take root; brome creeps in from the field. The transition is shockingly rapid. I study the changes and mark the invading species: hackberry, Osage orange, locust. Poison ivy nods in the shaded areas below the bluebird box, the latter slowly swallowed in an im-

penetrable thicket of saplings. Dark cedars burgeon on the periphery. The back 40 becomes a haven for small creatures. A refuge.

In the third year we invite a little white Angora rabbit to share our lives. We name him Mr. Bun and give him free rein of the house. In short order he’s an indispensable member of the family. As he grows, so grows the thicket, thriving, exulting in its anarchic germination.

In the fifth year Mr. Bun dies, and we bury him in the thicket, building over him a tall cairn from stones pulled from the bones of the hills. In evenings I visit the grave and mourn as I never thought possible. To lose a companion animal is to lose a lung, or an arm, or a heart.

Lori says, you should thin the trees, and I say, no. I like them breaking the horizon, the way they block the west wind, the manner in which they conceal a new house. That sixth year

## SCHULER FEED WAGONS

Vertical single & twin screw TMR-BF Series  
- HF255 Hay Feeder -  
Steiner Implement  
SABETHA, KANSAS  
785-284-2181

## AG LIME FOR NORTH CENTRAL KANSAS

HAULING & SPREADING  
**GEARY GRAIN, INC.**  
Junction City, Kansas 66441  
**785-238-4177**  
**Toll-Free: 877-838-4177**

## On the family farm, things work best when they work together.

ISOBUS connectivity means your new DT Series will work better and with more implements. Learn more at [www.LongLivetheFamilyFarm.com](http://www.LongLivetheFamilyFarm.com)



AGCO Tractors feature  
e3 technology.



[www.langdieselinc.com](http://www.langdieselinc.com)



Salina, KS (SA) .....785-825-8177  
Hays, KS (H) .....785-735-2651  
Colby, KS (C) .....785-462-2412

Smith Center, KS (SC).....785-282-6861  
Ellinwood, KS (E).....620-564-2255  
Sabetha, KS (SB).....785-284-3401

## USED EQUIPMENT COMBINES

(3) 08 Gleaner R75 .....	\$206,650 (H)
06 Gleaner R65 .....	\$172,000 (H)
06 Gleaner R75 .....	\$167,450 (SC)
03 Gleaner R65 .....	\$119,950 (C)
03 Gleaner R65 .....	\$119,950 (H)
02 Gleaner R62 .....	\$122,000 (SB)
99 Gleaner R62 .....	\$83,000 (SB)
98 Gleaner R52 .....	\$65,000 (SB)
98 Gleaner R62 .....	\$81,500 (SB)
96 Gleaner R62 .....	\$68,500 (SC)
96 Gleaner R72 .....	\$77,500 (SC)
92 Gleaner R72 .....	\$46,150 (E)
91 Gleaner R60 .....	\$31,600 (H)
90 Gleaner R60 .....	\$20,950 (H)

## SKID STEER LOADERS

06 Bobcat S185 .....	\$22,650 (SB)
06 Bobcat S130 .....	\$17,500 (SB)
04 Bobcat S250 .....	\$25,900 (H)
98 Bobcat 773 .....	\$16,850 (SB)
98 Bobcat 753 .....	\$9,400 (SB)
96 Bobcat 753 .....	\$13,450 (SB)

## MISC.

91 John Deere 780 manure spreader	\$7,450 (SB)
04 Great Plains 200TT CultiMulcher	\$21,150 (SB)
04 Great Plains 3010NT Drill .....	\$47,850 (SB)
08 Great Plains YP1225 Planter .....	\$92,000 (SB)

# Uniformity.

Uniformity is no accident. It's the result of a plan...a program...and a commitment to producing beef cattle that fit a complex system after they leave our pastures. At BJ Angus, we have a plan and we intend to continue with the same unwavering commitment to provide seedstock to our customers with the uniformity and proven genetic potential to move a program forward. Join us for the 8<sup>th</sup> Annual BJ Angus Genetics Production Sale.



## BJ Angus Genetics SPRING PRODUCTION SALE

FRIDAY, MARCH 20, 2009 • AT THE RANCH • MANHATTAN, KS  
*Selling approximately 75 bulls, ready to go to work and 70 elite females.*

BJ Angus Genetics • John & Bonnie Slocombe • 4291 McDowell Creek Rd. • Manhattan, KS 66502  
(785) 539-4726 • John's Cell: (785) 532-9777 • e-mail: [john@bjangus.com](mailto:john@bjangus.com) • [www.bjangus.com](http://www.bjangus.com)



I can take the silence no longer and bring home a black-faced Angora rabbit, a little girl, whom we name Sheba. Mr. Bun I loved, but Sheba I adore. She is with me constantly, lying beside my office chair, begging for scraps at the dining room table, charming me for snacks, dancing in joy. She is my muse. She is my familiar spirit.

In the ninth year, within a stone's throw of spring, Sheba dies of pneumonia. It is 12 degrees when we bury her, the soil half-frozen, a cold wind whispering from the north. We select a small clearing near Mr. Bun's cairn and hack through the crusted snow and twined roots and place her still body deep. I wonder for a moment if this was where the chiles grew, or the cucumbers, before remembering that this was a barren scrape we left shielded by a length of old carpet. Our beloved, then, is the first planting in this spot. Upon the tiny mound Lori places two stones. On three sides saplings close in to form a narrow cove, our only witnesses the untamed thicket and the measureless expanse of a winter-blue sky.

Lori plans a dye garden with coreopsis and madder, lavender and loosestrife, indigo and weld. Me, I will have a refuge for small things, with goldenrod and ivy, dandelion and dock, a pair of cairns, catbirds calling from deep recesses, bluebirds, brown thrashers, wild morning glory.



Brad Heine took a field trip from school with his dad Jim Heine as the Alma stockmen attended the annual Pied Piper-Mill Creek Ranch Hereford-Angus sale at Manhattan where neighbor-stockman Earl Buttenhoff, also of Alma, was assisting with behind-the-scenes sale action keeping bulls and heifers in and out of the ring and into pens.

**WANTED**  
**Farm & Industrial Equipment**  
**Lawn Care & Recreational**  
**Consignments**  
**SPRING MACHINERY CONSIGNMENT**  
**AUCTION**  
**SATURDAY, APRIL 4, 2009**  
**109 S. 4th Street**  
**CLAY CENTER, KANSAS**  
 Time to sell is now. If you haven't used it for a year do you really need it. We will help you turn it into cash.  
**TO BE ADVERTISED MUST CONSIGN BY**  
**WEDNESDAY, MARCH 18, 2009**  
 Contact Harold Mugler at 785-632-4994 cell or office: 785-632-3994  
**MUGLER AUCTION SERVICE L.L.C.**  
 P.O. Box 154 - Clay Center, Kansas  
 Harold Mugler 785-632-3994 Randy Reynolds 785-263-3394 Paul Geist 785-263-2545  
 or Mobile 785-632-4994

**Powerful and Maternal Genetics**  
**Overmiller**  
**Gelbvieh and Red Angus**

*Annual Production Sale*

**March 14, 2009**

1 pm at the Ranch North of Smith Center

**Selling Bulls & Heifers:**

**25 Gelbvieh Bulls • 20 Red Angus Bulls**

**10 Reg. Red Angus Open Heifers**

**25 Commercial Open Heifers reds & blacks**



**Overmiller Gelbvieh/Red Angus**

4062 O Road, Smith Center, KS 66967

email: overmillersteakbacon@yahoo.com

http://www.kansasgelbvieh.org/overmiller.htm

Kelly & Risa  
785-389-3522

Brent  
785-282-0485

Roger & Norma  
785-389-6281

Call or e-mail us for a catalog

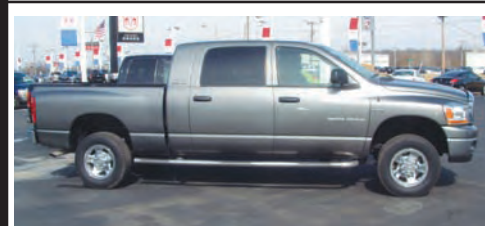
**Briggs**  
**DODGE**  
**www.briggsauto.com**  
**800-684-4848**  
**785-266-8858**

We are willing to do what it takes to earn your business.  
 We are the only call you will ever need to make for your farm, company, and personal vehicles.

**BUSINESSLINK** Sales Manager .....785-266-8858 .....Shane Sommars



**Cab & Chassis Headquarters!**



**2006 Dodge**  
**Mega Cab, 1/2 Ton 4x4,**  
**Hemi V-8 Automatic**  
**Only \$18,385**

**2007 Dodge Ram**  
**Quad 3500, Dually, Diesel,**  
**6 spd., 4x4, 30K**  
**\$26,900**



**2002 Ford F-250 XL**  
**Super Duty 5.4 Triton V-8,**  
**Only 49K miles! Local Trade-in**  
**\$13,995**

**2008 Dodge 4500,**  
**Heavy Duty 84" C.A., 2WD**  
**\$25,995**  
**Ready For Your Bed**



**2004 F-250 Crew Fx4**  
**6.0L Diesel, Local Trade**  
**\$18,695**

**2009 Dodge Rams**  
**IN STOCK NOW!**  
**Employee Pricing.**  
**While it Lasts!**



**2003 F-250 Lariat**  
**Super Duty Crew Diesel,**  
**Automatic, 4x4, 60K Miles!**  
**\$18,995**



**Briggs**  
**DODGE**  
**Ask For Shane Sommars**  
**(785) 266-8858**  
**www.briggsauto.com**



**Northeast Kansas #1 Volume**  
**DODGE DEALER!**

MONDAY-TUESDAY-THURSDAY: 8:30 AM-8 PM • WEDNESDAY-FRIDAY-SATURDAY: 8:30 AM-6 PM



## Water users encouraged to track streamflow conditions online

Water users in the lower Republican River basin are urged to use a Kansas Department of Agriculture-hosted web page to keep track of streamflow conditions that could trigger minimum desirable streamflow water use restrictions. The web page is at [www.ksda.gov/appropriation/?cid=1388](http://www.ksda.gov/appropriation/?cid=1388). Under Kansas law, when flow drops below an established threshold, pumping restrictions are imposed to protect existing water rights and to meet in-stream water uses related to water quality, recreation, and fish and wildlife. These minimum desirable streamflow requirements were made part of the Kansas Water Appropriation Act by the 1984 Legislature, and they affect only those water rights granted after April 12, 1984.

Pumping restrictions were in place from 2002 to 2007, when drought plagued much of Kansas. Throughout that time, restrictions were imposed on 177 water rights along the Republican River in Clay, Cloud, Jewell, Republic and Washington counties because streamflow remained below minimum desirable streamflow values. Heavy precipitation in spring 2007 brought back higher sustained flows, and flows throughout 2008 were sufficiently high that MDS administration was not triggered.

In recent years, water users in the Republican River basin have been allowed to enter into agreements with the division of water resources to use at least some groundwater or surface water, even while minimum desirable stream-

flow administration is under way. Consent agreements will be available again in 2009, but only if

and when MDS administration becomes necessary. Temporary changes, another mitigation tool, will be allowed should administration occur in 2009.

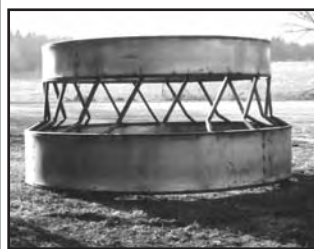
Currently, Republican River flows remain above MDS trigger levels. The de-

partment will notify affected water users if conditions change and it looks like MDS administration could be required.

Water right holders who want to know more about

Republican River MDS issues are encouraged to view the web page or to contact the division of water resources field office in Topeka at (785) 368-8251 or Stockton at (785) 425-6787.

### HAY SAVING BALE FEEDERS



**\$409.00**

- 14 gauge 1 1/4" square tubing
- 16 gauge sheet metal
- Full welded one piece construction
- Weights 375 pounds

**Wilgers  
Welding**

Palmer, Kansas  
785-692-4289

Conventional Styles Also Available

**Farmway  
Co-op**

Clay Center 785-632-5679  
Concordia - Beloit  
Belleville

### ARE YOU THINKING GLOBAL ?

Your crops and livestock are priced by global demand.

When it's time to sell land, shouldn't you expect the same?  
Local, Regional, National, We market to the whole world

Our internet marketing sites are generating 100,000 + hits/month from investors, hunters and your neighbors

Visit us today @ [www.KsLandCo.com](http://www.KsLandCo.com)

Or call one of the Guys

**The Realty Associates**

*A Full Service Realty and Auction company*

Mark Uhlik  
Agent/Auctioneer  
785-325-2740

Dan Uhlik  
Agent  
785-268-1239

John Rhine  
Broker  
888-811-5297



**Kansas Hunting &  
Investment Properties**

## Barton County Feeders, Inc.

**PROUD  
PROGRESSIVE  
PROVEN**

*"We want to earn the privilege to be your feedyard of choice."*

1164 SE 40 Road • Ellinwood, KS 67526 • 620-564-2200

Cap Proffitt, Manager • [www.bartoncountyfeeders.com](http://www.bartoncountyfeeders.com)

**We're  
listening ...  
that's why we're  
growing!**

**O**ver 160 progressively bred Angus, Red Angus and Charolais bulls available exclusively by private treaty at the ranch. These bulls are the result of producer input and the best genetics available. We accomplish this with planned matings that yield acceptable birth weights, superior growth and an easily managed blend of maternal and carcass genetics.

Fall and Spring Yearlings Sired by:

#### Angus

In Focus  
Objective 0T26  
Bando 1961  
Power One  
Analyst  
Foresight  
Harms Bright Future 3005  
Shear Force  
Rito 4L6  
Retail Product

#### Red Angus

Major League  
Romero  
Javelin  
Make Mimi

#### Charolais

Silver Edge  
Doc Silver  
Gridmaker

Proud to be a  
founding member of  
**U.S. PREMIUM  
BEEF**  
"We are Qualified Seedstock Suppliers"

Registered  
Angus  
Red Angus  
Charolais



"Your  
Partner  
in  
Progress"

**HARMS PLAINVIEW RANCH**

**Mark and Kim Harms**

2528 250th Street  
Lincolnton, KS 66858

(620) 924-5544

Email: [hprbulls@tctelco.net](mailto:hprbulls@tctelco.net)

[www.HARMSRANCH.com](http://www.HARMSRANCH.com)



# No-till on the Plains March grazing meetings coming soon

Don't miss the upcoming meetings on grazing and continuous no-tillage. These March meetings brought to you by Kansas-based No-till on the Plains, Inc. and the Kansas Department of Health and Environment will appeal to entry-level to advanced no-tillers by providing ways to improve soil health and discussing how to transition CRP acres directly into a no-till cropping system. Grazing, cover crops, rotations, intensity

and sequencing can add to your profitability.

Each day the workshop will begin at 9 a.m. and will wrap up by 3 p.m. There is no charge for the meeting or lunch.

The Tuesday, March 17 meeting will be offered in conjunction with the Cheney Lake Watershed at the Amish Community Building, 5917 W. Mills Avenue, Hutchinson — located 4 miles west of Hutchinson on Highway 50, 1.5 miles south

on Whiteside Road, and .25 miles west on Mills Ave.

The Wednesday, March 18 meeting will be offered in conjunction with Marion Reservoir Watershed Restoration and Protection

Strategy (WRAPS) at the Burns Community Building, 301 N. Washington, Burns.

To register by Friday, March 13, contact the office at (888) 330-5142 or visit the website at [www.notill.org](http://www.notill.org).

**CIRCLE S GELBVIEH**  
**APRIL PRODUCTION SALE**  
**Saturday, April 4th at 1:00 pm**  
 Quarter mile south of Canton, KS  
 RED & BLACK POLLED GELBVIEH  
 Contact: [Circle\\_S@hometelco.net](mailto:Circle_S@hometelco.net) or 620-654-6507

## AUCTION

**SATURDAY, MARCH 14 — 10:30 AM**

We have quit farming and will sell the following items at public auction at the farm located from MANHATTAN, KANSAS 5 miles West on Anderson Ave. (Old Highway 24) or 9 miles Southeast of RILEY, KANSAS to 8357 Anderson Avenue.

**TRACTORS, TRUCKS, TRAILERS - SELL FIRST**  
 1980 John Deere **4240 diesel tractor**, cab and air, 3 SVC's, nearly new 18.4x38 rears, 8477 hrs., good shape; good set of 18.4x38 **rim mount duals**; John Deere **2630 diesel tractor**, open station, 2 SVC's, new 15.5x38 rears, 3811 hrs., VG; 1980 **Ford 3600 diesel tractor**, open station 2 SVC's, 13.6x28 rears, rear wts., bought new by David Shurle, 1899 actual hours, excellent; **Westendorf WL21 loader** to sell after 2630 and 3600, both have brackets for this loader; 1987 **Volvo White semi tractor**, conventional cab with sleeper; Cummins M-14 diesel, 9 spd. Road Ranger, good rubber, 8 to 9 hundred thousand miles, VG; 1982 Timpette super hopper 42 ft. high side alum. **grain trailer**, good rollover tarp, good 11R-24.5 tires, nice trailer; Trailmobile 44 ft. **flatbed semi trailer** with wooden floor and pipe bale rack to haul 20 - 5x6 or 23 - 4x5 BR bales; 1971 Chevrolet C-50 **farm truck** with all steel 16 ft. bed, 4 ft. sides, tandem hoist, 327, 5x2, saddle tank, very good 900 rears and 9.25 fronts, all blue, good; 1989 Chevrolet 3500 1 ton **4WD dually** with 11 ft. flatbed, tool boxes on both sides, recessed 5th wheel hitch, receiver hitch, 454 gas, 4 spd., lock-out hubs, grill guard, 64,000 miles, good; Titan 16x7 ft. bumper hitch **stock trailer**, good floor, good.

**FARM MACHINERY EARLY AFTERNOON**  
 Hesston 6650 **self propelled swather**, cab and air, Perkins diesel, hydro, good shape; 1994 Vermeer 5041 silage **big round baler**, 4Wx5 ft. bales, monitor, VG; JD 346WT wire tie **small sq. baler**, VG; Farmhand 8 bale **accumulator**; Farmhand 8 bale **fork**, extra teeth; Donahue **swather trailer**, VG; JD No. 660, 9 ft. 5 bar **side delivery rake** with dolly wheel; JD 8300 16x8 **grain drill**, good single discs, high rubber, shedded, VG; JD 8250, 20x7 single disc **drill with fert.**; JD 1300, 6x30 **planter** with liquid fert.; Sunflower 18 ft. dbl. offset **wing disc**, 22" front blades, 19 1/2" back; Krause **16 ft. disc**, 21 1/2" blades front and back, VG; JD 14 ft. **wheel disc**; JD 28 ft. No. 1010 **field**

**NOTE: Major pieces have been shedded and are in very good condition. 30 days for removal. Loader tractor available. Your inspection invited prior to sale. Go to [kretzauctions.com](http://kretzauctions.com) for pictures. Not responsible for accidents.**

**TERMS: Cash or good check day of sale.**

**CLERK: Riley State Bank, 201 S. Broadway, Riley, KS. 66531**

**LUNCH: Silver Creek Beneficiary Club.**

**JEFF & GLENDA HOLMES & DAVID & GLADYS SCHURLE TRUST**  
 785-485-2707 - Leave Message  
 Auction Conducted by:  
**Kretz, Hauserman, Bloom Auction Service**  
 Greg: 785-926-4422      Gail: 785-632-3062  
 Cell: 785-630-0701      Cell: 785-447-0686  
 Chad: 785-632-5824 • Cell: 785-632-0846

**cultivator**, walking tandems, good tires, tine leveler; IHC 16 ft. No. 45 vibra shank **field cult.**, sweeps, Noble leveler; Landoll 9 ft. 3 pt. **3 bar chisel**, ga. wheels, VG; Landoll 9 ft. 3 pt. **2 bar chisel** with 4 ft. of extensions; JD 145, 4x16 **semi mt. plow**; JD 3x14 **mounted plow**; Ford 3x16 **mounted plow**; Land Pride 3 pt. 90" **finish mower**, good; Bush Hog 7 ft. "Squealer" **rotary mower**, 3 pt.; Wertz **belly dozer** with 9 ft. blade, good; Ford Cat 2, 8 ft. 3 pt. **rear blade**, tilt/swivel; Box Ox 8 ft. 3 pt. **rear blade** with tilt/swivel; 8x20 ft., 2" wooden **hay rack** with back bar on VG 10T Killbros gear; old 16 ft. **hay rack** on good JD gear with flotation tires; approx. 30 ft. **shop built hay trailer** with heavy duty running gear with 4 sets dual truck tires, lights and tongue with pin hitch, good; 2 - No. 30 Grain-O-Vator **feed wagons**; "Snow Machines" 3 pt. **snow blower**, 6 ft. wide, 540 RPM, used very little, looks new; IH 3 pt. **sprayer**, needs tank; 3 pt. 2 wheel **windrow rake**; heavy duty 3 pt. **bale fork**; 2 Bale Master **bale spears** for loader; 13 ft. **pickup reel**.

**FARM SUPPLIES & MISC. SELL FIRST**

Airco stationary 200 amp DC **arc welder** with Perkins 4 cyl. diesel engine, old pipeline welder, good; 3 section 16 ft. pipe type **bale elevators**, will hook and run together; pile heavy **I-beams** up to 16 ft. x 10"; 30 **telephone poles** in assorted sizes; misc. tin; 36 good 48"x52" thermal pane dbl. **windows**, still in crates; various other single and dbl. checkrail windows; portable **livestock panels, gates**, etc.; sm. horse hay **feeder**; 4 **gas station pumps** from 50's to 70's; gas tank on stand; 100 plus board feet of **native walnut lumber** in various lengths and dimensions; 9 good trailer house **tires**; lots of truck, tractor, pickup and impl. tires from 16" to 22.5"; rear wheel wts.; good "Saddle King of Texas" tooled **adult saddle**; 4 lg. **camo covers**; 3 1/2 hp. pull behind **yard sprayer**; chain saws; trimmers; a couple rack loads shop items and stuff found around the farm.

**Find out how We Protect What You Value!™**  
**You are invited to our...**  
**Customer Appreciation Days Sale!**  
**MARCH 12 & 13**  
 Open from 8am to 6pm  
**MARCH 14**  
 Open from 8am to 5pm  
 Give Aways with Estimate! 0309  
 Food & Refreshments provided!  
 Pre-Engineered Structures for:  
 • Residential • Equine • Commercial  
 • Farm • Suburban • Metal Roofing  
**FABRAL Lifetime Paint Warranty**  
 • Professionally Engineered  
 • Custom Designed  
 • Featuring Cleary Doors  
 • Skilled Building Crews  
 • Builders Risk & Full Insurance  
 GARDEN CITY, KS, 2840 Schulman Ave. (Hwy 50/83 ByPass).. (620) 271-0359  
 McPHERSON, KS, 421 N. Hwy 81 Bypass ..... (620) 245-0100  
 OTTAWA, KS, 2706 Kingman Rd. (Off Hwy 59) ..... (785) 242-2885  
 WELLINGTON, KS, 1015 N. Vandenburg (Hwy. 160) ..... (620) 326-2626  
 CORTLAND, NE, 5376 Hwy 77 ..... (402) 798-21110  
**CLEARY BUILDING CORP.**  
 Serving our Clients since 1978  
 Color & Design your building at  
**ClearyBuilding.com**  
 See website for map to offices  
**1-800-373-5550**

**Kansas Cattlemen's Association**  
 606 N. Washington St., Junction City, KS 66441 • Phone (785) 238-1483  
 E-mail: [cowsrus@kansascattlemen.com](mailto:cowsrus@kansascattlemen.com) • Website: [www.kansascattlemen.com](http://www.kansascattlemen.com)

### Callicrate Feedyard

Mike Callicrate  
 St. Francis, KS  
 785-332-3344

### Finney County FY

Doug Parham  
 Garden City, KS  
 620-275-7163

### Maverick Feeders LLC

Gene Carson  
 Dodge City, KS  
 620-227-3308

### Circle Feeders Inc.

Bill Porterfield  
 Garden City, KS  
 620-275-0108

### Hoxie Feedyard

Scott Foote  
 Hoxie, KS  
 785-386-4519

### Winter Feed Yard

Ken Winter  
 Dodge City, KS  
 620-225-4128

### Pike Feeders Inc.

Byron Pike  
 Minneola, KS  
 620-885-4452

### Shaw Feedyard, Inc.

Bill Shaw  
 Ashland, KS  
 620-635-2670

### Mid America Feeders, LLC

Bronson Smith  
 Great Bend, KS  
 620-792-1378

*The Kansas Cattlemen's Association is Kansas' fastest growing cattlemen's association. Our mission is to restore profits, self-esteem, freedom, fair trade, trust and community pride back to the farms, ranches and rural communities across Kansas and the Nation.*

## grassandgrain.com



**MAINE-ANJOU BULLS**  
**Green Springs**  
**Performance Tested Bull Sale**  
**Sunday, March 15, 2009 at 1:00 PM (CST)**  
 At MO-KAN Sale facility in Passaic, Missouri  
 60 miles South of Kansas City on Hwy 71

This sale will feature 10 outstanding Black Maine-Anjou bulls sired by some of the elite Maine-Anjou sires in the breed for added growth, calving ease, carcass traits, and maternal values.

#### Available Test Information:

RFI (Residual Feed Intake – feed efficiency), Bull's Weight, ADG, WDA, Ultrasounded for Backfat, Marbling & REA, Pelvic measured, Semen checked, and breed EPDs.

ALL BULLS TESTED NEGATIVE FOR PI BVD

ALL BULLS ARE TESTED TH & PHA FREE

**Results of National Maine-Anjou Steer & Heifer Feeding Trials:**  
 1,041 head averaged 1254 lbs., .41 inch BF, 13.06 REA, YG 2.78, 55.4% Prime/Choice, 6.27 F.C.

Maine-Anjou bulls used in a crossbreeding program provide added heterosis for 25% more weaning weight, 17% more calves, and a 38% increase in the lifetime production of the cow.

**FOR ADDITIONAL INFORMATION OR CATALOG CALL:**

**Dave Steen, AMAA Commercial Marketing Director**  
 (515) 201-3281 or

**Ken Abele, Mgr. Green Springs Bull Test**  
 (417) 465-2240 or (417) 448-7416

**Maine-Anjou – The Value Added Breed**

### McPherson County Feeders

Allan Sents  
 Marquette, KS  
 785-546-2216

### Rooks County Feeders, LLC

Phil Conyac  
 Plainville, KS  
 785-434-2114

### Ford County Feedyard Inc.

Danny Herrmann  
 Ford, KS  
 620-369-2252

### Ottawa County Feeders

Perry Owens  
 Minneapolis, KS  
 785-392-2184

### Dodge City Feeders, LLC

Bronson Smith  
 Dodge City, KS  
 620-792-1378

### Coake Feeding Co

Richard Koenke  
 Dodge City, KS  
 620-227-2673



Hey Neighbor

# For The Love Of Horses

By Frank J. Buchman

Patriotic Cowgirl Chicks Entertain While Riding For Cancer Cure

“It’s our horses.”

At least that’s what the All American Cowgirl Chicks claim.

Yet, lots more is involved, and one only needs a split second to realize that when

seeing their performance.

Wearing the patriotic colors of red, white and blue, Trish Lynn and the All American Cowgirl Chicks are an equestrian drill team, exemplifying the true

meaning of their western heritage as they entertain crowds while riding for a cure for cancer.

Sparkling horses of every color mounted by glamorous, fashionably clad cowgirls carrying big American flags all going at a full run to the loud choreographed music leave no doubt the Weatherford, Texas-based rodeo entertainment and trick riding troupe has arrived.

A featured attraction at the recent Kansas EquiFest in Wichita, one of nearly 100 performances around the country annually, the Cowgirl Chicks drew enthusiastic applause and expressions of appreciation for their diverse, action-packed

opening act.

“We really are more than fast horses, flags, music and tricks,” emphasized Trish Lynn, who heads the group she started in a much smaller fashion 11 years ago.

“The Cowgirl Chicks are a team with a story, a style

and a vision all its own, and we know what it is like to start from the ground up, get dirty, get knocked down and take something that no one believed in and turn it into a ‘something,’ ” Lynn declared.

Continued on page 13



Trish Lynn sings the opening song while performing a dance routine with two other Cowgirl Chicks during the group’s first show at the EquiFest of Kansas in Wichita.

306 ACRES  
NE LYON  
COUNTY

# REAL ESTATE AUCTION

NATIVE GRASS,  
PASTURE,  
HAYGROUND

SATURDAY, MARCH 21 — 2:00 PM  
Flint Hills Room, Best Western  
3021 W Highway 50 — EMPORIA, KANSAS

**LEGAL DESCRIPTION:** NW fr ¼ and SW fr ¼ 30-15-13, Lyon County, Kansas.

**LOCATION OF PROPERTY:** North East Lyon County, ½ mile west of W Rd and 380th Rd.

**DIRECTIONS:**  
**From Harveyville:** west on 31 Highway 1 mile to Miller Rd, then south 3 miles to 400th Rd, west 1 mile to W Rd, south 2 miles to 380th Rd west ½ mile on north side.  
**From Highway 56 and 99, 1 mile north of Admire:** go north of Highway 99 to old school house at 390th Rd, then east 1 mile, north ½ mile to 395th Rd, then east 4 miles to W Rd, then south 1 ½ miles to 380th Rd, then west ½ mile on north side.

**TYPE OF PROPERTY:** Very clean native grass pasture, most could be hayed, 4 small ponds, newer fence along road with double pipe gate. This property has gentle slopes and relatively good Class III and IV soils.

**2008 TAXES:** \$738.78

**TERMS OF SALE:** Successful bidder, sign purchase contract, 10% down day of auction with the balance due at closing on or before April 20, 2009, possession at the time of closing. Buyer to have all inspections they deem necessary completed prior to auction. All financial arrangements must be made prior to auction, no finance contingencies will be accepted. Owners title policy will be paid half by Seller and half by Buyer. Real Estate agents are agents of the Seller. The property is being sold in its present existing condition “as is”. Statements made the day of auction take precedence over all printed materials. Not responsible for accidents.

**AUCTIONEER’S NOTE:** Expand your cattle operation with this good clean grazing or hay ground in Northeast Lyon County. If your located in Wabaunsee, Shawnee, Osage or Lyon Counties this property provides a good opportunity to add a quality pasture to your farm or ranch. For more information and aerial map go to [www.rezaclivestock.com](http://www.rezaclivestock.com) and click on Rezac Auction.

M. LAVERNE CRAIG REVOCABLE TRUST  
MILDRED M. CONRAD REVOCABLE TRUST

PEARL REAL ESTATE AND APPRAISAL SERVICE, INC  
ST. MARYS, KS 66536      785 437-6007

Dennis Rezac, Auctioneer  
785 456-4187

Michael T. Pearl, Broker  
785 256-5174

# FINE ANTIQUE AUCTION

SATURDAY MARCH 14 —12 NOON

Preview Saturday morning 10 to 12

30 miles east of Kansas City at the western edge of LONE JACK MO

North side of U.S. Hwy 50 near the big white water tower. 529 West Lone Jack – Lee’s Summit Rd, 64070.

After more than thirty years, a large dispersal filled with Quality and Variety including Rare Royal Bayreuth Figurals, 50 Pieces of Roseville, Weller, Hull, Owens, Niloak, Brush and other Art Pottery including R’Ville Blackberry Wall Pocket. Lighting, Porcelain, fine Boehm Birds, Large Spode & Mason’s China Pieces, Victorian Art Glass and Bride’s Baskets, unusual Cambridge figural flower frogs, Cambridge Rose Point Crystal, Castle Rose Sterling flatware set, Prints, Paintings, Toys, Primitives, 1846 Sampler, Quilts, Firefighting Collection, Clocks, Railroad China, 1900’s Field Camera, Stoneware and more! Full catalog online, we’ll start with some good un-catalogued Glass, China and Primitives.

**Terms: NO BUYER’S PREMIUMS, sales tax applies, cash, check, Visa Master Card.**

**DIRK SOULIS AUCTIONS**  
816-697-3830  
[www.DirkSoulisAuctions.com](http://www.DirkSoulisAuctions.com)

# LAND AUCTION

WEDNESDAY, MARCH 18 — 1:00 PM

Auction held at Beattie American Legion on Main Street  
**BEATTIE, KANSAS**

**80 ACRES MARSHALL COUNTY FARMLAND**

**LEGAL DESCRIPTION:** S1/2 NE 1/4 in 21-1-9 East of the 6th PM. Marshall Co., KS. Consisting of 80 acres more or less.

**FARM LOCATION:** 6 miles North of Beattie or from Summerfield go South 3 miles on Hwy. 99, then West 3 miles on Cherokee Rd. and 1/4 mile South on 22nd Rd.

**GENERAL DESCRIPTION:** This farm currently has approximately 72 acres of productive cropland consisting of soybean stubble. The balance consists of waterways and terraces with good access from a township road. The buyer will receive possession of cropland when contract is signed and down payment received. The seller received all 2008 farm income and will pay all 2008 Real Estate Taxes.

**TERMS:** Cash with 10% down payment earnest money on day of sale with the balance due in full on or before April 15, 2009 with delivery of deed, marketable title and full possession.

This land is located in a good farming community and should merit the serious consideration of anyone wanting an individual unit or add-on acres. Look it over before sale day and come prepared to bid. Statements made day of sale take precedence over any advertised or previous statements.

**H.D. & PAT WULLSCHLEGER, SELLERS**

For inspection or inquiry, contact Tim or Rob Olmsted  
Real Estate Brokers & Auctioneer at 785-353-2487  
or 785-353-2210  
[www.olmstederealestate.com](http://www.olmstederealestate.com)

# AUCTION

SATURDAY, MARCH 14 — 10:30 AM

As we are retiring from farming, the following sells to the highest bidder located from LAWRENCE, KS. 13 miles East on Hwy. K-10; OR, from KANSAS CITY, KS. Jct. of I-35 & Hwy. K-10, 9 miles West on K-10, to Kill Creek Exit (DeSoto, KS), then 2 3/4 miles South on Kill Creek Rd. to Jct. of 115th & Kill Creek Rd. then South to Auction site.

**TRACTORS**

1996 JD 7600 Dsl. Cab-Air, 2 Wheel Drive, 3 Hyd. Outlets, 19sp. Power Shift, Quick Hitch 6 Ft. wts. Short Axles, 18.4-38 Rubber, 1830 Hours, SN RW 7600P008856; JD 4560 Dsl. Cab-Air, 2-Wheel Drive, 3 Hyd Outlets, 15 sp. Power Shift, Quick Hitch, 18.4-46 Axle Mount Duals, 3330 Hrs., SN RW 4560P003117; JD 4440 Dsl. Cab-Air, 2 Wheel Drive, 2 Hyd Outlets, 8 Sp. Power Shift, Quick Hitch, 20.8-38 Axle Mount Duals, 2645 Hrs. SN FW 4440 PO58689.

**FARM MACHINERY**

JD 7000 6-R Planter, Plateless, Monitor, Insecticide Boxes; JD 630 21 ft. Hyd-wing Disk; JD 980 Hyd Wing Field Cultivator, 23' 5"- 7 1/2 Spacings; JD V-Ripper 900, 20 In. Spacings-Guage Wheels, 3 pt.; JD F1350-F 1450 6-16 Semi-Mount Plow, 3 pt.; JD 400 Rotary Hoe, 3 pt.; JD RM 6-R Cultivator, Rolling Shields; JD 45 W. Front End Loader, Older; Great Plains 25F-24 Solid Stand, 24 ft. Folding Drill, 7 1/2 In. Spacing, 5,671 Acres; Rhino SR-15 Bat Wing Rotary Mower, HD Gear Boxes; Unverferth 335 Gravity Wagon, 500 Bu. W/Hyd. Seed Tender Auger, on Unverferth G-13 Gear, Roll Over Tarp; Ag-Krane Rear Mounted Fork Lift Attachment 3 pt., w/Forks and Bulk Seed Bag Handler; Lilliston Rolling Cultivator, 6-R, 3 pt.; JD Incomplete JD 'B' Tractors for Parts; Steel Wheel Pull Type Road Grader, 6 ft. Needs Some Repair.

**COMBINE & HEADS**

1997 JD 9500 DSL., (50th Anniversary.) Cab - Air - RWA - Big Engine - Chopper-Chaf Spreader - Updated 10 series Shives & Chaffer - 17 ft. Unloading Auger - 30.5-32 Frt.- 18.4-26 Rear - 1908 Engine Hours - 1394 Separator Hrs.;

2002 JD 918 F-Flex Head, Full Fingered Auger SN695541; JD 643 Low Tin Corn Head - Approx. 150 A. on New Snap& Rolls.

**TRUCKS**

1987 Ford F-700 Single Axle V-8 370, 5 - 2 sp., 900-20 Rubber, Saddle Tank, w/Knapheide 16 ft. Grain Bed & Hoist, 40 In. Sides, Roll-over Trap, 26,100 Miles; 1980 I.H. S-1800 Single Axle, V-8 345, 5-2sp. Double Saddle Tanks, 9.00-20 Rubber, w/Knapheide 16 ft. Grain Bed & Hoist, 40 in. Sides, Rollover Tarp, 34,366 Miles; 1965 Chevrolet C-30, 6 cy., 4 sp., Less Than 500 Miles on Engine Overhaul w/11 ft. Grain Bed & Hoist; 1973 Chevrolet C-60 V-8 4-2 sp., New Engine within last 1500 Miles, w/Omaha 16 ft. Grain Bed & Hoist; 1947 Chevrolet Truck, 14 ft. Grain Bed, Has Not Run for a Number of Years; Chevrolet 6 cy. Engine out of 1947 Truck.

**MISCELLANEOUS**

2- JD Black Cylinders; Clipper Seed Cleaner; Lincoln AC 225 Amp Welder; Miscellaneous JD Parts; Fuel Tank, 110 Gal. w/12V Pump; 7 - I Beams - Approx. 11 ft.; 75+ Sheets of 9 ft. Used Tin; Assortment of Rough Cut Native Lumber; 8 - Slabs of 2 1/2 in. Rough Cut Walnut Lumber; Older Fairbanks 12,000 lb. Drive on Scale; Some Hand Tools.

**STEEL BINS**

2 Older 1000 Bu. Steel Bins.

**CONSIGNED BY DEEMS FARM EQUIPMENT**

2004 JD 467 Round Baler, Silage Special, Bale Push Bar, Mega Wide Pickup, Surface Warp, Hyd. Pickup Lift, SN 312146 Excellent Cond.; JD 735 Mo-Co, Impeller Conditioner, Rock Shaft Swivel Hitch, Hyd. Header Tilt, SN313118, Excellent Cond.

**NOTE:** The Bowlin's have farmed for 50+ years and are retiring. Most of the major pieces have been shedded. They have followed an excellent maintenance program. Most items are in good to excellent condition, ready to go to the field. Plan to come early and enjoy the Auction. Tractors could start selling around noon.

Lunch by DeSoto, KS Methodist Church Youth Group. SEVERAL OTHER ITEMS TOO NUMEROUS TO MENTION.

**ROY & GLADYS BOWLIN, OWNER**  
(31935 W. 115th St., Olathe, KS)

**BEATTY & WISCHROPP AUCTIONS**  
Lyndon, KS • 785-828-4212

Wayne & Craig Wischropp      Mark Elston      Charles & Ed Beatty  
785-828-4646                              785-828-4560

Pictures on website at:  
[www.beattyandwischropp.com](http://www.beattyandwischropp.com)



A lifelong horse enthusiast and talented entertainer who danced and sang professionally, Lynn started the group as a parade team with girls who had an interest in riding horses. "It's just snowballed into the group we have now," Lynn said.

The parade riders decided to develop a drill team. "We practiced for a year before we ever did a public appearance, and from there we had more dreams and set higher goals," Lynn continued.

Now there are 18 girls involved in the team, along with Lynn and her nine-year-old daughter. "Actually, members must be at least 13 years old, because of all the hard work that goes into this," Lynn explained.

Some of the group has been involved since early years, but typically there is a rotation in membership, as careers, marriages and other interests come about.

"It really requires dedication from the girls, and also from their parents, because so much time is necessary for training and travel," Lynn qualified. "While many girls want to participate, not all of them have the stamina, ability and work ethic to continue."

Also, their education must be considered. "Fortunately, several of the schools understand how physical our training regime is and allow our riders to get physical education and sports credit for participation," Lynn recognized. "Our schooling is actually at the Olympic level, and outstanding performers have been produced."

Instructors are typically cooperative in working with students when they have to miss class for performances.

"Whenever possible, the girls try to do their work ahead of time," noted Lynn.

It's essential to qualify that some of the girls didn't even have horses before joining the troupe. "They definitely had a love for horses, and then we worked to find a horse for them," Lynn clarified.

Although the horses have sparkling glitter groomed into their hair before each performance, there is about every horse color created within the team.

"We have never made an attempt to have matching horses, and every horse has its own individual story," Lynn informed. "Many of

these horses had a bad experience before we got them."

However, despite what has happened prior to arrival at Lynn's stables, majority of the horses turn out to be useable, although in varying capacities, depending on their capabilities. Certain tricks require different sizes, shapes and attitudes of the horses.

"There is no real secret to it, but every one of them has required time and effort, some even more than others," contended Lynn. "It's take lots of dedication and patience from the girls, building of trust between them and their horse. With a

few exceptions, most of the horses have become part of the team."

A number of the horses have been given to the Cow-girl Chicks. "After a performance, sometimes horse

owners will come up and tell us they have a horse that they'd like for us to have," Lynn related. "Several of those horses have become an important part of the shows, and the previous

owners keep up with them and our activities."

A wild mustang has recently been incorporated into the troupe. "He actually came from Kansas, but had

*Continued on page 14*

## LAND AUCTION!

### Harvey County, Kansas

#### 446± Acres

**Friday, March 27 at 10 AM**  
**Community Hall, Burrton, Kansas**

- Land is located near Burrton, Kansas.
- Will be offered in three tracts for bidding.
- Includes one top quality center pivot irrigated farm on Highway 50 two miles east of Burrton.
- Two nice dry land farms...good soils and high percentage tillable.
- One tract offers waterfowl hunting with "hunting pits".
- Buyer will receive landlord's share of '09 wheat!
- 10% down day of auction.
- Closing on or about April 20, 2009..

### Productive Harvey County Farms!

For property details, contact:

**Farmers National Company** **Chris Ostmeyer, Agent**  
Derby, Kansas  
(785) 672-8672 or (316) 788-4240  
costmeyer@farmersnational.com

**www.farmersnational.com**

Farm Management • Real Estate Sales • Appraisal • Insurance  
Consultation • Oil & Gas Management • Conservation & Recreation



New-generation AGCO compact tractors now offer a big plus: a factory-installed ROPS cab specially designed to enhance your comfort and productivity. Now you can stop worrying about common distractions such as rain, dust, insects or snow — and focus on growing your business.



- Two doors for easy access on both sides
- Heating/air-conditioning
- Wiper/washer on front windshield
- Speakers wired for radio or CD player
- Front and rear work lights
- Available on ST34A, ST47A, ST52A and ST60A models
- New for 2007, 3-year or 2000 hour Power Train Warranty

Visit your local dealer today for a test drive and experience the quiet comfort of the all-new AGCO ST Series tractor cab.

**AGCO**  
TRACTORS

**HILLSBORO**  
Ag Power, Inc.  
620-947-3182  
**KALVESTA**  
Kalvesta Implement  
620-855-3567

**EMPORIA**  
Schaefer Equipment  
620-342-3172  
**MINNEAPOLIS**  
Lott Implement  
785-392-3100

**AUBURN**  
Garrett Ranch Supply  
785-256-2372  
**LAWRENCE**  
Shuck Implement  
785-843-8093

## R&L Angus

### Annual Angus Bull Sale

March 15, 2009  
At the Ranch • 1:00 p.m.  
Complimentary lunch served at 11 a.m.  
*Selling 70 Fall and Spring Yearling Angus bulls  
with guest consignors Donnell Farms, Martinsville, Indiana*

#### R&L Magnitude 8008

Bull 16169413

OCC Magnitude x R&L Elba 584



BW	WW	YW	Milk	Marb	RE	\$B
+2.8	+49	+87	+15	+1.16	+0.08	+25.69

#### R&L Marathon 7600

Bull +16172387

BC Marathon 7022 x LLA Georgina 410



BW	WW	YW	Milk	Marb	RE	\$B
+4.5	+49	+81	+26	+1.28	+1.39	+44.57

#### R&L Marathon 8506

Bull +16169415

BC Marathon 7022 x LLA Georgina 410 SS Objective T510 oT26 x R&L Emulation 626



BW	WW	YW	Milk	Marb	RE	\$B
+4.5	+49	+81	+26	+1.28	+1.39	+44.57

#### R&L Objective 8104

Bull 16192231



BW	WW	YW	Milk	Marb	RE	\$B
+2.6	+55	+95	+22	+1.39	+1.30	+51.62

#### Directions to the ranch:

25 miles north of I-70 on Hwy. 99.  
**From Westmoreland**, go south 2 miles on Hwy. 99 to Christian Road; go 1/4 mile on Christian Road, second house on the right.

**From Wamego**, go approximately 11 miles north on Hwy. 99; turn left at mile marker 187 onto Christian Road; second place on the left.

LiveAuctions.TV

R&L Angus

Ron and Lynne Hinrichsen  
13080 Christian Rd.  
Westmoreland, KS 66549  
(785) 457-2848  
Ron's cell (785) 770-0222  
Lynne's cell (785) 770-0014  
rlangus@bluevalley.net

**MCS**  
Midwest Cattle Sales  
Guaranteed Marketing

Matt C. Sims  
Wavenna Phipps  
1019 Waterwood Pkwy, Unit D  
Edmond, OK 73034  
Office: (405) 840-5461  
www.mcsauction.com

## AUCTION

**SATURDAY, MARCH 14 — 10:00 AM**

**2244 3300 AVENUE**

**JUNCTION CITY, KANSAS**

Directions: From Junction City take Highway 57 North to the Highway 77/57/244 Intersection, continue West on Highway 57/244 .5 miles to the 244/57 Y. Take West Highway 244 4 miles to Union/Dietrich Road. Go right (North) on Union/Dietrich Road 1 mile to 3300 Ave/St. Johns Road. Turn left (West) on 3300 Ave .5 miles to sale site. **WATCH FOR SIGNS.**

#### VEHICLES & HORSE

##### DRAWN EQUIPMENT

1977 Dodge Full Size Van w/Rebuilt Engine (Low Miles on Engine), 1974 2 Dr. Cadillac El Dorado, 1968 4 Dr. Oldsmobile Cutlass, 1961 Rambler Station Wagon (Salvage), Trailer Made From Pick-up, Several Pieces of Horse Drawn Equipment (Some w/Seats & Iron Wheels).

##### ANTIQUES/COLLECTIBLES

Antique Corn Planter, Miscellaneous Wire & Yard Fence (Some Antique), Chicken Feeder & Waterers, McCall's Upright Pattern Cabinet, Corn Sheller, Apple Peeler, Several Boxes Of Antique Equipment Wrenches, Hay Hooks, Hand Saws, McCormick Deering Cream Separator w/ Attachments, Several Platform Scales w/Weights, Buggy Steps, Box of Old Padlocks, Tin Implement Seats, Several Live Animal Traps And Other Traps.

#### TOOLS & MISCELLANEOUS

Troy Built "Horse" Rear Tine Tiller, (Good), Several Riding Lawn Mowers (Various States of Repair), Makita 12" Chop Saw w/Carbide Tip Blade, Rockwell 10" Table Saw, Bel-saw 10" Planer/Sharpener, McCulloch 610 18" Chain Saw, Limb Saw, Small WW Grain Grinder (Runs Off Electric Motor), Lincoln #280 220 Amp Welder w/Leads, Gas Engine Post Hole Digger, 3 HP 8" Auger, Electric Bench Grinder, Acme Circular Saw Sharpener, Rock Island 505A Vise, Rail Road Track Anvil, A&B Saw Set, Bar Clamps, Garden Planter w/Plate, Lawn Spreader, Montgomery Ward Tool Boxes (Top & Base, Top w/6 Drawers & Several Others), Silver Beauty Battery Charger, High Lift Jack, MVP Floor Jack (4,000 lbs), Hand Tools (Shovels, Forks, Rakes, Axes & Bars), Several Old Jacks, Metal Shop Bench, B&D Shop Mate, Lots of Drill Bits, Electric

Drills (3/8, 1/2 & 1/4), Screw Drivers, Hammers, Wrench Sets, Socket Sets (1/4, 3/8 & 1/2), Tubing Bender, Cable Come-a-Long, Jack Stands, Pipe Wrenches Of All Sizes, Several Wood Levels w/Brass Inserts, Tap & Die Sets, Wooden Organizer w/Sand Paper, Hand Saws, 2 Man Saws (Some With Handles), Miscellaneous C Clamps Up To 8", Several Organizers Of Bolts, Screws, Nails, Etc., Pipe, Galvanized Pipe 1/2" to 1", Pipe Wrenches Of All Sizes, Yard Type Wheel Barrows, Planters, Galvanized Wash Tubs, Car Ramps, Various Size Log Chains, Saw Horses, Plastic 30 Gallon Barrels, Iron Barrels, Several Pieces of Wrought Iron (Different Styles & Sizes), Golden Rod Fence Stretcher, Garden Planter w/Plate, Lawn Spreader, Steel Posts, Ammo Boxes, Plastic Patio Furniture, 2-Metal Yard Chairs, **AND MANY MANY MORE INTERESTING ITEMS TOO NUMEROUS TO LIST.**

Auctioneers note: Wayne collected for many years and this is just a small representative of what will be available for sale. Come prepared to spend the day. Lunch by Alida-Upland Cooperative Church Ladies.

**TERMS:** Cash or check. Not responsible for accidents.

**WAYNE BERNEKING, ESTATE**  
**U.S. LAND AND HOME**

**BROWN**  
2323 N. Jackson  
Real Estate & Auction Service LLC  
P.O. Box 68 • Junction City, KS  
66441

JAY E. BROWN  
Auctioneer  
785-223-7555

GREG HALLGREN  
785-499-5376

785-762-2266 • FAX: 785-762-8910 • E-mail: jbrown@ksbroadband.net  
www.KSAllink.com • kansasauctions.net





Inspirational and dangerous are the best two words to describe much of the All American Cowgirl Chicks performances. Sadie and Ginger do the hippodrome tail drag and display the American flag during their first show for the EquiFest of Kansas in Wichita.

## ESTATE AUCTION

SUNDAY, MARCH 15 — 9:30 AM

732 N.E. Twiss (Oakland) — TOPEKA, KANSAS

**HOUSEHOLD:** Divan; recliners; chair and ottoman; smoke stand; corner shelf; handmade sewing cabinet; Singer elect. sewing machine; what not shelf; knick knacks incl. Mary Poppins; coffee and lamp tables; gun cabinet; 3 and 4 pc. bedroom suites; bookshelf; hutch; 5 pc. dinette set; vanity lamps; table and floor lamps; anniversary clock; wall clock; stereo; TV; picture and frames; mirrors; side-by-side refrigerator; upright freezer; auto. washer; microwave; **old Admiral radio/record player**; Kirby sweeper and others; sm. appls.

**GLASSWARE:** Fenton; decanters; cookie jar; Jewel T; McCoy jardiniere; wall pockets; spice set; figurines; other misc. dishes.

**VEHICLES:** 2002 Chevrolet S-10 PU with extended cab, approx. 26,000 actual miles; 1978 Buick LeSabre with approx. 85,000 actual miles.

**COINS:** Kennedy and Liberty half dollars; silver dollars; Buffalo and Liberty Head nickels; Susan B. Anthony and more.

**GUNS:** Marlin Mod. 94 "Take Down" 2520M; Ruger Mod. 1022, 22 long rifle; Winchester Mod. 67A 22 short/long rifle, bolt action; H&R Mod. 732 revolver.

**TOOLS & MISC.:** Chain saw, like new; 10" table saw; scroll saw; wood lathe; weed eater; snow blower; **cast iron bank**; drill press; work bench; air compressor; air bubble; bench grinder; dolly; wheel barrow; tool boxes, metal and wooden; hand and garden tools; power tools; elect. motors; kerosene heater; floor jack; ladders; lawn chairs; push mowers; hook rugs; games; puzzles; maps; **pocket watches**; costume jewelry; fishing poles and access.; golf clubs; luggage; pots and pans. OTHER ARTICLES TOO NUMEROUS TO MENTION.

**TERMS:** Cash. Not Responsible for Theft or Accidents. Show I.D. for Number to Bid. Anything stated day of sale takes precedence over any printed material. Concessions Available.

ESTATE OF VIRGIL E. &  
VIVIAN SMELSER-JACKSON

KOOSER AUCTION SERVICE  
Topeka, Kansas  
www.kooserauction.com

## ESTATE AUCTION

SATURDAY, MARCH 14 — 10:00 AM

2119 Virginia Street  
LAWRENCE, KANSAS 66046

See Complete Sale Bill at  
www.dandlauctions.com

Maytag Side-by-Side Refrigerator; Kenmore Front-Load Washer and Dryer (New); Duncan Phyfe Table w/6 Chairs; Dinette Table/Chairs; Sofa; Upholstered Chairs and Rockers; 3 Pc. Bedroom Set; Chest; Cedar Chest; Niagara Adjustable Beds; Desk; 4 Dr. File Cabinet; RCA Console Stereo; Old Trunks; TV's; Sony DVD/VCR; TV Stand; Kenmore and Hoover Vacuums; Card Tables; Floor Lamps; Brunswick Pool Table; Shuffleboard Table.

Beautiful Antique Slag Glass Lamp; Bronze Bookends; Wool and Navajo Blankets; Original Springfield Model 1842 Musket; Lots of KU Jayhawk Items, incl. 1950's-60's Programs, Media Guides, Wilt Chamberlin; Many Old Pictures; Art Deco Wall Mirror; 24 Hummel Plates; Hummel Music Boxes; Numerous Old Books, incl. WWII, Douglas County and

Lawrence; Albums; Postcards; Vintage Photography Equipment; Liquor Decanters; Lots of Jewelry, incl. 18K Men's Diamond Ring, Designer Signed and Costume; Curtis Sculptures; 3 Sets of China; 80 Pcs. Blue Fostoria "Jamestown" Stemware, 20 Dinner Plates, C/S and S/P; Blue Bubble Berry Set; Russel Wright China - 65 Pcs. Grey, 75 Pcs. Pink; Jewel Tea Coffee Pot and Nesting Bowls; Lots of Other Glassware; Sm. Kitchen Appliances; Flatware; Linens and Bedding; Luggage; Graniteware; Vintage Coca-Cola Cooler; Fairy Lamps; Frankhoma, Van Briggles Pottery; Sewing Items; Old Toys; Doll furniture; child's Dishes; 60 Still Banks; Old Tool and Farm Manuals; Playboys; Tools; Craftsman Riding Mower; Numerous Box Lots and Other Items.

**Terms and Conditions:** Positive ID required to register. Payment by cash or good check. Statements made the day of the auction take precedence over all printed or written material. All items sold "as is", "where is". Not responsible for accidents or loss. Concessions Available.

JOHN AND EUGENIA EMICK ESTATE

D & L Auctions, Lawrence, KS  
785-749-1513 or 785-766-5630  
Auctioneers: Doug Riat

## For the Love of Horses . . . continued

Continued from page 13

never been handled," commented Lynn. "It was just amazing how the girls worked with him, and he developed into such a nice horse. We have the very highest regard for our horses." Even a draft horse has been used on the team.

Most of the horses are kept at Lynn's place, but some members also keep them at their homes. Feed supplies and care of the horses are no small items,

yet with donations and dedicated effort by all involved, the troupe is able to give the horses the best care.

Practice makes perfect, and there's no shortage of that. "The cowgirls work individually on their own every day, and we have regular Monday practices for everybody, with trick riding training every Wednesday," explained Lynn.

Of course, the entertainers get lots of experience when on the road doing the shows. "We were away from

home four days at Wichita, and we're always working to improve in everything we do," Lynn added.

When the group started, their farrier's son had developed cancer, and they accepted donations for their performances to aid that boy's recovery. "He's now 16 years old and his cancer is in remission; but every performance we give, we are riding for a cure for cancer," Lynn pointed out.

"Through our shows, the team has raised funds to

help give mental and physical strength to those battling cancer," Lynn continued. "When cancer hits homes, there is a race to be run. It isn't about winning but about getting through together and helping loved ones to the finish line whether than means a cure, treatments, remission or even death.

"When the race is over, the lesson learned about care, patience, flexibility and hanging in there during

Continued on page 15

## LARGE MACHINERY AUCTION

FRIDAY, MARCH 20 — 9:30 A.M.

HENRY BROS IMPLEMENT INC.

201 E Miami St, HIAWATHA, KS 66434

Henry Bros Imp Inc, a Case-IH Dealer in Hiawatha, Seneca & Holton, Kansas, of 40 years has sold their business to **Bruna Implement Co**, a Case-IH Dealer with 5 locations in Kansas. Together they will offer a **great** line of quality Farm Machinery at Public Auction.

Sale to be held at the Hiawatha store: From the Jct of Hwy 36 & 73/159 at Hiawatha, KS take 73/159 north to Miami St. Turn right and go east to sale location.

Case financing available to pre-approved end user buyers. Call Gretchen at Hiawatha, KS office-785-742-2261, fax-785-742-7903. Pre-approval Process Ends Thursday, March 19th at 4:00 p.m.

For questions regarding machinery please call:

Hiawatha, KS • 785-742-2261  
Marysville, KS • 785-562-5304

SELLERS: HENRY BROS IMPLEMENT, INC  
& BRUNA IMPLEMENT CO.

proxibid.

**Wheeler**  
AUCTIONS & REAL ESTATE  
660-327-5890 or 660-327-1806

Chas Wheeler,  
Owner/Auctioneer  
Bill Ringhausen 573-754-2254  
Charlie Nordwald 636-795-4552  
John Wallace 573-470-4234  
www.wheelerauctions.com

TRACTORS, TRUCK & LIVESTOCK EQUIPMENT

## AUCTION

SUNDAY, MARCH 22 — 12:00 NOON  
ONAGA, KS

Located 1/4 mile North of the North end of Onaga, KS on Onaga Road, then 1/4 mile East on Carl Road . WATCH FOR AUCTION SIGNS. LUNCH ON GROUNDS

### TRACTORS & LOADERS

IHC 706 Farmall, gas TA, WF, 3-pt., good shape; H-Farmall w/WF, overdrive transmission, 3-pt., power steering, fenders, very good; Super C Farmall, NF, fast hitch, good shape, parade ready; M-Farmall with NF, good; G.B. 800 loader w/6' bucket, good; (2) 3-pt. bale spikes & 1 bale spike for GB loader; 2 C-Farmall tractors, NF, for salvage.

### TRUCKS, TRAILERS & MACHINERY

1989 Chevy 1-ton dually truck w/ 8' metal flatbed w/ gooseneck hitch, 4-spd., 39,000 actual miles, 350 motor, good shape; 5'x14' Rawhide bumper hitch stock trailer, good; Shop built 6'x16' gooseneck stock trailer; Rhino 3-pt. posthole digger w/12" bit, very good; IHC 3-pt. 7' balanced head mower; 20' gooseneck flatbed 3-axle trailer w/14-ply low boy tires, good; 22' heavy pipe frame for trailer or truck to haul big bales; Bumper hitch tandem axle 8'x14' flatbed trailer; Gravity box grain wagon on heavy 4-wheel gears; 3 Metal 4-wheel Army bed wagons w/12" high sides, 2 w/hoists; Pickup bed 2-wheel trailer; Wagon running gear; 3-pt. carry-all; 5' 3-pt. rotary mower; -pt. 7' blade, good; 3-pt. dirt scoop; 3-pt. bale carrier; Pull-type bale unroller; New Holland heavy duty running gears w/ pipe frame (to haul big

bales); Pull-type 300-gal. boom sprayer w/poly tan.

### HAY

60 Big round bales of 2007 brome hay; 88 Big round bales of 2006 prairie hay.

### LIVESTOCK EQUIPMENT

Shop built squeeze chute w/automatic head gate; 4'x20' pipe hay or silage rack; Poly liquid protein tank; 6 Mineral feeders, good; (12) 12' green metal panels & (1) 4' metal gate, near new; 8 Assorted metal gates; 8 Poly bottom feed bunks; 5 Big bale hay rings; 2 Metal sheep & goat feed bunks; 2 Sheep or goat big bale feeders; 3 Good stock tanks; (10) 10' metal sheep or goat panels; 1 Double sided & 1 single side calf creep feeder, good; Wood burning tank heater; 2 Calf pullers; Cow hip lift; (4) 12' x 14' Porta Hut metal sheds, good shape; 8'x14' pipe frame metal shed, good.

### MISC. & TOOLS

3 Sets of 2 portable metal scaffolding, good; 24' & 40' Warner aluminum ext. ladders; 500-gal. propane barrel; 300-gal. fuel barrel w/stand; 4 Electric fencers (110V batteries), good ; 4 Steel 55-gal. barrels; 8 Plastic 55-gal. barrels; 2 Iron piles; Assorted rolls of barbed wire; (2) 26" rolls of woven wire; 3 Trailer house axles; 10 Older IHC wheel weights; 2 Wagon loads of misc. & tools.

**TERMS:** Cash or valid check. Not responsible for accidents or theft. Statements made sale day take precedence over printed material.

SELLER: KARL E. SAUVAGE  
23710 Carl Road, Onaga, KS • 785-889-4663  
Cell 785-547-5046

— AUCTION CONDUCTED BY—  
CLINE REALTY & AUCTION  
John E. Cline, Broker-Auctioneer  
Onaga, KS • 785-889-4775  
Website: mcclivestock.com/clinerealty

## LAND AUCTION!

9 Tracts! • Washington County, Kansas  
2,071± Acres



Wednesday, March 25 at 10 AM  
4-H Building Fairgrounds  
Fairbury, Nebraska

- Land is located just south of the Kansas-Nebraska state line between Fairbury and Morrowville (Highway 15).
- Productive farmland, center pivot irrigated, and dryland.
- Will be offered for bidding as nine tracts.
- Full possession to all tracts for 2009.
- Includes all wells and irrigation equipment.
- Ten percent down day of the auction.
- Sale closing on or about April 24, 2009.

**Nine Tracts • Pivot Irrigated & Dryland!**

For property details, contact:

**Jeff Monhollon, Agent**  
Cortland, Nebraska  
(402) 794-0215 or 239-1536  
jmonhollon@farmersnational.com

www.farmersnational.com

Farm Management • Real Estate Sales • Appraisal • Insurance  
Consultation • Oil & Gas Management • Conservation & Recreation

## AUCTION

SATURDAY, MARCH 21 — 10:30 AM

As we are quitting our livestock operations and reducing our farming, the following sells 9 miles North of LYNDON, KS on Hwy. 75, then 1 mile East on E. 181st; or approximately 15 miles South of TOPEKA, KS on Hwy. 75, then 1 mile East on E. 181st. Real estate will also sell at primary auction site at the homestead location.

REAL ESTATE SELLING AT 10:30 AM

**LOCATION OF REAL ESTATE:** From the intersection of Hwy. 75 and 181st St. approximately 9 miles North of Lyndon, KS then 1/2 mile North on Hwy. 75 on West side of road. (Watch for signs).

**DESCRIPTION:** 77 acres +/- mostly native pasture with some trees, 2 sm. ponds and slough, fences are good to fair.

**BUYER'S AGENTS:** 1% of the purchase price will be paid at closing to buyers agent or transaction brokers that represent buyer. **HOWEVER, agents MUST register their buyer at least 48 hrs. prior to auction with the Century 21 Miller & Midyett's Lyndon Branch Office, 785-828-2599.**

### FARM MACHINERY SELLS FOLLOWING REAL ESTATE

JD 3020 dsl. WFE, dual hyd., outlets, fenders, 3 pt., SR, SN55207; 1950 JD "R" dsl. Wheatland, SN5351, live PTO and hyd. fenders; JD "B" styled, NFE, SN258868; Grain-O-Vator 30; Continental post hole digger, 16 in. auger; JD grass head 8 1/2 ft. for 3800 series silage cutters; Jet Flow 52 ft. x 8 in. portable grain auger; JD "BWF" 18 ft. manual wing disc, cond blades, good condition; JD "RM" 6 row cultivator, 3 pt.; JD 5-14 steerable plow, 3 pt.; Mulkey 40 ft. hay and grain elev. with hopper; portable 40 ft. 6 in. grain auger; Badger hi-throw silage blower, PTO; flatbed implement trailer, duals, wench; 1964 Chevrolet C-20 pickup, 6 cy., 4 sp. with Haul-Mor wooden stock racks, somewhat rough but runs; Jet-Co PTO wire roller; Country Trailers bumper pull 6x16 ft. stock trailer, no title; JD 1000 field cultivator, hyd. fold, 25 ft.; 1978 JD 6600 dsl., cab, hydrostat, chopper, bin ext., rice tires, newer cyl. bars, feeder house chain, concaves, radiator, JD 404 engine with 216 flex head, 2782 hrs., SN257-314H; Unverferth HT 25 header trail-

er; IH cream separator, self cleaning; Twentieth Century 295 amp welder with charger; Forney electric welder; 4 poly tanks: 1550, 1250 1100 gal.; 6 grain augers with electric motors; approximately 300 steel posts; approximately 100 electric fence posts; 16 wire cattle panels; 3 round stock tanks; 2 small Ritchie electric waterers; 2 portable loading chutes; 16 ft. heavy duty fence line hay feeder panel; 2 poly bottom feed bunks; steel oval bottom feed bunk; hog feeding floor; several hog panels; several hog self feeders; JD R hyd. cylinder; hand wire roller; sweep auger for 27 ft. bin with elec. motor; 10 plus steel panels and gates; 2 - 100 lb. propane tanks; 2 heavy duty galvanized barrels; 10 steel chicken feeders; set of 23-1-34 rims and tires; 300 and 500 gal. fuel barrels and stands; fiberglass 220 gal. plus 1 poly 150 gal. tanks with brackets; JD R&B and 3020 manuals; 3 wire egg baskets; old well pump; 14 steel traps; Fairbanks platform scale; some household items with antiques and collectibles.

Many other items too numerous to list. Inspection day of sale only. Lunch by Happy Trails Chuckwagon.

TED & CYRELLA BIRTELL, OWNERS

BEATTY & WISCHROPP AUCTIONS  
785-828-4212

www.beattyandwischropp.com





# Auction Sales Scheduled

check out the on-line schedule at [www.grassandgrain.com](http://www.grassandgrain.com)

March 10 — Marion Co. bottomland at Marion for Ora & Margaret Hett. Auctioneers: Leppke Realty & Auctions.

March 10 — Ottawa Co. grass at Wells for Murpy Farms Inc. Auctioneers: Burr-Carlson Farm and Ranch Realty, broker; Roger A. Johnson, auctioneer.

March 11 — Republic Co. land at Courtland for Dan & Shirley Sandell. Auctioneers: Larry Lagasse Auction & Real Estate.

March 11 — Spring consignment auction at Geneva, NE. Auctioneers: Dick Schoenholz Auctions.

March 12 — Peyton Creek-Chase Co. land at Cottonwood Falls for Beef Production, Inc. Auctioneers: Rick Griffin Auctions.

March 12 — Ottawa Co. land & farmstead at Minneapolis for Murphy Farms Inc. Auctioneers: Burr-Carlson Farm and Ranch Realty, broker; Roger A. Johnson, auctioneer.

March 13 & 14 — Private Treaty Angus sale at Holton for Rinkes Cattle Co.

March 14 — Tractors, trucks, farm machinery, mowers & farm related items at Goessel. Auctioneers: Schmidt Auctions.

March 14 — Furniture, appliances, household & misc. at Lawrence for John & Eugenia Emick Estate. Auctioneers: D&L Auctions.

March 14 — Furniture, kitchen appliances, household, china, hand & garden tools & misc. at Manhattan for Joy Norvell. Auctioneers: Vern Gannon Auctions.

March 14 — 23rd Annual Concordia Optimist Club Consignment Sale at Concordia.

March 14 — Consignment Auction at Lyndon for Harley Gerdes.

March 14 — Farm machinery & miscellaneous W. of Manhattan for David & Gladys Schurle Trust & Jeff & Glenda Holmes. Auctioneers: Kretz, Hauserman, Bloom Auction Service.

March 14 — Farm sale N. of Haddam for Joe & Virginia Baker. Auctioneers: Novak Brothers & Gieber.

March 14 — Gelbvieh & Balancer bull sale at Belleville for Rippe Gelbvieh.

March 14 — Annual production sale at Smith Center for Overmiller Gelbvieh & Red Angus.

March 14 — Fertilizer & farm equipment at Tampa for Agri-Producers Inc. & Others. Auctioneers: Bina Auctions.

March 14 — Horse drawn equip., salvage vehicles, scrap iron, hand tools, woodworking tools at Junction City for Wayne Berneking Estate. Auctioneers: Brown Real Estate & Auction Service, LLC.

March 14 — Tractors, farm machinery, combine, heads, trucks, steel bins & misc. S. of DeSoto for Roy & Gladys Bowlin. Auctioneers: Beatty & Wischropp Auctions.

March 14 — Farm equipment at Portis for Richard Reinert. Auctioneers: Wolters Auction & Realty.

March 14 — Antique furniture, collectibles, primitives & misc. at Beatrice,

NE for Rowdy's Relics & Antiques-Jerry & Jackie Rowden Estate. Auctioneers: The Auctioneers.

March 14 — Polled Hereford bull & female sale at Burchard, NE for Tegtmeier Polled Herefords.

March 14 — Guns, assortment of ammo, gun books, magazines at Belleville for Larry Klima Estate. Auctioneers: Bob Thummel Auctions.

March 14 — Kirby Barrett Benefit Auction at Leonardville. Auctioneers: Jeff Ruckert Auctions.

March 14 — Household, collectibles, coins, stamps, handicap scooter, shop, guns & misc. at McPherson for Ken Goering & Others. Auctioneers: Triple K Auctions.

March 14 — Mowers, jewelry, antiques & household at Abilene for Area Sellers. Auctioneers: Reynolds, Mugler & Geist.

March 15 — Household, glassware, vehicles, coins, guns, tools & misc. at Topeka for Virgil E. & Vivian Smelser-Jackson. Auctioneers: Kooser Auctions.

March 15 — Angus sale at St. Joe, Mo. for April Valley Farms.

March 15 — New & used furniture, tools, riding mower, hardware & misc. at Lawrence for Freeman Used Furniture Store. Auctioneers: Paxton Auction Service.

March 16 — Charolais Gelbvieh Balancer bulls & heifers at St. Francis for Raile Charolais-Raile Gelbvieh.

March 16 — Meade Co. land at Meade. Auctioneers: Hamm Auction.

March 18 — Marshall Co. farmland at Beattie for H.D. & Pat Wullschleger. Auctioneers: Olmsted

Auctions.

March 19 — Benoit Angus 20th Annual Bull Production Sale at Esbon.

March 20 — Machinery auction at Hiawatha for Henry Bros. Implement, Inc. & Bruna Implement Co. Auctioneers: Wheeler Auctions.

March 20 — Marshall Co. land at Marysville for Leeman & Linda Weber. Auctioneers: Donald Prell Realty & Auctions.

March 21 — Tools, vehicles, rock equipment, household & misc. at Greenleaf for Martin Weber & Alma Finlayson. Auctioneers: Bob Thummel Auctions.

March 21 — Real Estate & Personal Property at Manhattan for Donna Blaske & Mike Blaske. Auctioneers: Vern Gannon Auctions.

March 21 — Machinery auction W. of Marysville for Wayne & Peggy Link & others. Auctioneers: Don Prell Auctions.

March 21 — Farm auction at Seneca for Francis C. Rottinghaus Estate. Auctioneers: Wilhelm Auction Service.

March 21 — Farm Sale Southwest of Concordia for Bedford Malmquist Estate. Auctioneers: Larry Lagasse Auction & Real Estate.

March 21 — Hereford sale at Manhattan for Northeast Kansas Hereford Association. Auctioneers: John Cline.

March 21 — Consignment auction at Belleville for Race Museum. Auctioneers: Novak Brothers & Gieber.

March 21 — Farm equipment & related items at Junction City for Hartman Consignment sale. Auctioneers: Brown Real Estate & Auction Service LLC.

## For the Love of Horses . . . continued

Continued from page 14

tough times are as precious as gold," Lynn evaluated.

CDs, videos and posters of Trish Lynn and the Cowgirl Chicks as well as horse equipment and clothing featuring their insignia are also sold to raise funds.

Because of their generosity, the group has been designated a 501(c)(3) non-profit organization. "That is truly an honor for us and our efforts," Lynn recognized.

With performances throughout the country, a highlight for the group was entertaining at the 2008 Stockholm International Horse Show in Sweden. Another special time was when they rode in the most recent Rose Bowl Parade at Pasadena, Calif.

"We'll be at Branson, Mo., later this year for over a week, performing twice a day," Lynn announced. If they aren't on the road, the Cowgirl Chicks entertain at the weekly Fort Worth Cowtown Coliseum Rodeo.

Performances are varied according to the audience, but typically Lynn will sing a couple of songs, while several Cowgirl Chicks do a dance routine, and sometimes Jake Miller, Emporia native, accompanies the troupe and does rope tricks, in time to music.

Fast and colorful describes the remaining show,

as the national anthem is sung by Lynn, while American flags are paraded around the arena in a unique serpentine. Then, riders do a variety of daring trick riding stunts and maneuvers, each choreographed to recorded music and pyrotechnics.

One rider is dressed as a combat Army soldier and rides standing up on her horse at a fast run around the arena, before also doing a number of difficult acts. "We are so proud of those serving our country, and we make a special tribute to them at every performance," Lynn stated.

Engagements are continually being contracted, with a record number of performances predicted for this year. While there were 13 in the group at Wichita, Lynn said she must have a minimum of eight cowgirls to do a show.

"At the top of our mission statement is to preserve Western heritage in America and promote the sport of rodeo in the highest type of conduct and sportsmanship, and expose its positive image to the general public," reminded Lynn.

"Outstanding qualities are gained through this program, and these experiences will stay with our girls for life and help them in lots of situations," Lynn concluded.

March 21 — Angus sale at Zenda for Molitor Angus.

March 21 — Lyon Co. land at Emporia for M. Laverne Craig Revocable Trust & Mildred M. Conrad Revocable Trust. Auctioneers: Pearl Real Estate & Appraisal Service.

March 21 — Pasture, tractors, combine, farm machinery & misc. N. of Lyndon for Ted & Cyrella Birtell. Auctioneers: Beatty & Wischropp Auctions.

March 21 — Gelbvieh & Balancer bulls & female at Barnard for Post Rock Cattle Co.

March 21 — Antiques, collectibles, furniture, glassware at Holton for Milton Drechsler Estate. Auctioneers: United Country Pagel Realty & Auction, Wayne Pagel, auctioneer.

March 21 — Tractors, combines & farm machinery at Haven for Joyce (Jr.) Vanley. Auctioneers: Schmidt Auctions.

March 21 — Real Estate & trees at Wichita for Myers Nursery. Auctioneers: Swenson Real Estate & Auctions.

March 21 — Household, furniture, antiques, dishes & misc. at Abilene for Betty Puckett. Auctioneers: Shivers & Thompson Auctions.

March 21 — Tractors, trucks, pickup, combines, fuel tanks & other equip. at Kincaid for Hoff Brothers. Auctioneers: Read Auctions.

March 21 — Coins at Portis. Auctioneers: Wolters Auctions.

March 21 — Vehicles, tools, shop equipment, yard & garden tools, collectibles, primitives, glassware, furniture, household, stair lift at Hoisington for Thomas (Tom) Bell Sr. Estate. Auctioneers: Schremmer Auctions.

March 22 — Signs, advertising, crocks, pottery, glass, furniture & collectibles at Salina. Auctioneers: Bob Thummel Auctions.

March 22 — Tractors, trucks & livestock equip. at Onaga for Karl E. Sauvage. Auctioneers: Cline Realty & Auctions.

March 22 — Antique tractor, hay equipment, furniture, antiques, farm toys & misc. at Osage City for Ed & Mina Slusher. Auctioneers: Beatty & Wischropp Auctions.

March 23 — Horned Hereford, Black Angus, black whiteface heifers & Quarter Horses at Dwight for Oleen Brothers.

March 23 — Charolais bulls at Belleville for Runft Charolais.

March 24 — Brangus & Angus bull sale at Eureka for Suhm Cattle Co.

March 24 — Angus & Hereford sale at Claflin for Beran Brothers Angus & B&D Herefords.

March 25 — Lyon County, pasture, timber, cropland, deer & wildlife at Emporia for Bradley & Millcent Phillips.

March 25 — Land auction at Abilene for Willard (Red) Schneider. Auctioneers: Ron Shivers Realty.

March 26 — Red Angus at Elmdale for Mushrush-Beckton & Joint Red Angus Sale.

March 28 — 5th Annual Royal Purple Show Pig Sale at Burlington.

March 28 — Antique furniture, antiques & collectibles, shop tools, lawn mower, household & appliances at Claflin for Lois Steiner Poa & Augusta Huslig. Auctioneers: Victor Bros. Auctions - Frank Princ.

March 28 — Registered Angus bull & female production sale W. of Topeka for Mission Valley Ranch.

March 28 — Farm machinery, vehicles & misc. E. of Belleville for Edward Novak Estate. Auctioneers: Novak Brothers & Gieber.

March 28 — Consign or donate at Lawrence for Galen Douglass Memorial. Auctioneers: Dale Douglass Auctions.

March 28 — Nemaha Co. farm land at Seneca for Ronald J. Haverkamp. Auctioneers: Cline Realty & Auctions.

March 28 — Farm machinery W. of Hiawatha for Dale & Bettye Bosse. Auctioneers: Aeschliman &

Fleskoski Auction.

March 28 — Household goods, antiques, costume jewelry, tools & commercial lawn mowers at Milford for Ron Shandy Estate. Auctioneers: Kretz, Hauserman, Bloom Auction Service.

March 28 — Equipment & farm machinery consignment auction at Tonganoxie. Auctioneers: Moore Auction Service.

March 29 — Antiques, collectibles & tools at Council Grove for Adrian & Doris Doerr. Auctioneers: Hallgren Auctions.

April 1 — Tested bull sale at Beloit for Kansas Bull Test.

April 3 — 27th Annual Bull Sale at Hyannis, NE for Hebbert Charolais.

April 4 — Spring Consignment auction at Washington. Auctioneers: Raymond Bott, Lee Holtmeier & Luke Bott.

April 4 — Limousin sale at Salina for Kansas Limousin Breeders.

April 4 — Real estate, farm equipment, construction equipment & household W. of Eskridge for Keith & Debbie Simon. Auctioneers: Murray Auction & Realty.

April 4 — Farm machinery sale W. of Corning for Kenneth Rothers. Auctioneers: Deters Auctions.

April 4 — House & household furniture & misc. at Onaga for Donna Shepard Estate. Auctioneers: Cline Realty & Auctions.

April 4 — Carpenter tools, upholstery items, household & antiques at Belleville for Gyneth Horak. Auctioneers: Novak Brothers & Gieber.

April 4 — Farm & livestock equip. & household at Alta Vista for Kenny Clough Estate & Linda Clough. Auctioneers: Macy Realty & Auction.

April 4 — Goat, Lamb, Pig 4-H FFA Prospect Auction at Lyons. Auctioneers: Hollinger Auctions.

April 4 — Tractors, trucks, combines, tillage & hay equip., tools & misc. at Tescott for Jim & Clea Lee. Auctioneers: Bacon Auctions.

# FARM AUCTION

2815 H Road  
**SENECA, KAN.**

1 mile west, 3 miles north on Hwy. 178 to St. Benedict Church, 1 mile north of church, 1 mile west on 184th Rd., 4 miles north on H Road, west side of road.

**TRACTORS**

White Field Boss 2-150, WF, dual hyd., cab  
Minneapolis Moline M670 L.P., WF, dual hyd., sells w/loader 5' bucket

**Skid Loader**

2005 Case 430 6' bucket, 474 hrs., cab, air-foam filled tires, like new Timberline HTC3 tree shear, like new Pallet forks for skid loader

**Combine**

1992 JD 9400 combine, rear wheel assist, 2600 sep. hrs., 395 eng. hrs. JD 918 flex head  
Oliver 6x30 corn head, JD adapted Oliver 7600 gas combine (parts)  
Oliver 15' platform head

**Trucks & Bike**

1977 C-65, V8, 5x2 tires, 98K miles, 15' bed & hoist  
1976 Chevy Silverado 4x4, V8, auto. trans., propane adaptor  
1989 Chevy Silverado 4x4, V8,

auto. trans., 187K miles  
1961 Chevy PU, 6-cyl., 4-spd., does not run  
1958 Chevy C-60, no box (parts)  
Yamaha 250 motorcycle

**Machinery**

Brent 640 gravity wagon, roll over tarp, 22.5" 14-ply tires & electric brakes  
Peck 60' 10" auger w/hyd. swing away auger  
Parker 250-bu. gravity wagon w/hyd. auger, JD running gear  
EZ Trail 672 header trailer  
JD 980 22' field cultivator  
JD 714 chisel, 9-shank  
JD 220 center fold disc  
Great Plains Solid Stand 13 drill. 7 1/2" spacing  
White 6100 6x30 planter, liq. fert. 6x30 rear MT cultivator  
Oliver 565 steerable plow, 5x16 NH 499 hyd. swing swather, 14' Hesston 5580 big round baler  
Gehl 65 grinder mixer  
JD 700 Hi Cycle sprayer, 45' booms

AC mower, 7' bar, 3-pt.  
Mist blower  
New Idea manure spreader, PTO  
New Idea 400 rake  
Lely Ratera RH-450-40  
JD rotary hoe  
12' Rotary hoe, pull-type  
4x30 planter, 3-pt. (parts)  
8' Springtooth, 3-pt.

**Misc. Livestock**

Pearson squeeze chute  
16' wooden self-feeder  
4' 8' round bale feeders  
1000-gal. plastic water barrel  
550-gal. diesel tank w/elect. pump  
100-gal. tank w/electric pump

**2008 Hay (37 big rounds)**

5 Brome; 7 Alfalfa  
25 Hay Grazer Sudex

**Guns**

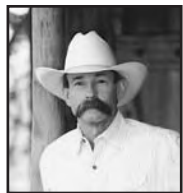
Browning over/under 12-ga.  
Ruger 357 Blackhawk  
Colt .22 automatic pistol  
Pellet gun

**Seller: FRANCIS C. ROTTINGHAUS ESTATE**  
**Administrator: William C. O'Keefe**

**WILHELM AUCTION SERVICE**  
**Auctioneers: DALE WILHELM, 785-336-3501 or 785-336-3627**  
**DANNY DETERS, 785-868-2591**

TERMS: Cash or valid check with proper ID. Not responsible for accidents, theft or printing errors. Statements made day of sale take precedence over printed material. All items sold as-is.





# BAXTER BLACK

ON THE EDGE OF COMMON SENSE

## Continuing Saga Of Abandoned Horses

I had a visit with the president of the Humane Society of the United States (HSUS) recently about the abandoned horse issue. My question to him was "Since the problem is a direct result of the banning of equine slaughter plants, for which his group led the charge, what are they willing to do to help those of us who have inherited the responsibility for the mess they have made?"

We discussed the woefully inadequate plan to put them in 'refuges.' We both agreed that euthanasia is not a bad thing, but dumping your unwanted horse along the roadside, in private pastures, or on park land to die of starvation is not humane.

We considered having equine animal shelters, like dog pounds. Maybe one in every state that would accept horses at no charge, hold them for thirty days in hopes they could be adopted, then euthanasia. The facility should include a free pick-up service, a large 'feedlot' to

hold them, and a rendering plant. He did not readily agree that his group would finance this national program. But they are the richest animal rights group in the world and what better way, I thought, to put their money where their convictions are?

The HSUS has made legitimate criticism of how some horses destined for distant slaughter plants in Canada and Mexico are transported. We livestock people are responsible for the animals in our care from conception until death. We cannot turn a blind eye to double-decked trucks, too-long hauls and mistreatment. The Department of Transportation or Agriculture should have laws that guarantee the horses' well-being. We should ensure their enforcement.

It's good that we are talking, but this winter the public's awareness of the problem, and their deeper understanding of the cause seems to be lifting the veil of the ignorance which often blinds the naive but well-meaning, be they horse lovers, politicians or journalists. Starving horses are not a pretty sight.

Three states, North Dakota, Wyoming, and Montana, with more to come, are taking steps to examine the construction of horse slaughter plants to replace the ones

the animal righters have had banned in Texas and Illinois. The day these new plants open up, the abandoned horse problem, with all its unintended abuse, will disappear. There would be a place for them to go.

There are several groups scrabbling around for answers this cold winter to save unwanted horses from the misjudgment of these well-intentioned but irresponsible 'animal lovers.' I hear from them regularly. I suggest if you are one of these sale barn operators, ranchers, park rangers, farmers or rural residents who have inherited the problem, take photos of the horses, good or bad, that have been dumped in your area. Then when a new state applies for a permit to build a new horse slaughter plant and the animal rights group protest, we will have an entire 'Gallery of Abandoned Horses' to show the public the inhumanity of their policy. These photos would be very convincing. Our facts versus their perception. Of course, we could put pictures of abandoned horses on milk cartons with the caption "Brought to you by HSUS, PETA and the 'Frenchmen Should Not Eat Horsemeat Society!'"

## REAL ESTATE AUCTION

148 Acres, M/L, of Nemaha County Farmland  
SATURDAY, MARCH 28 — 1:30 PM

Valentino's Restaurant Banquet Room, 604 North 11th St.  
SENECA, KANSAS

**PROPERTY LOCATION:** 7 miles South of Seneca, KS, starting on the SW side at the corner of 96th Rd. and Hwy. 63. This property runs 1 mile South to the Jct. of Hwy. 63 and Hwy. 9.

**LEGAL DESCRIPTION:** The East Half (E 1/2) of the East Half (E 1/2) of Section 2, Township 4 South, Range 12 East, Nemaha County, KS.

This property consists of 148 acres, M/L, with 141 total cropland acres, including waterways, per FSA records. There are 127.7 base acres. This property is all terraced and has established waterways, a small creek area and a brome grass area for hay. There are powerlines along the North and East sides of this property and it has 1 1/4 miles of Hwy. frontage.

For more information and terms, please call John E. Cline, 785-889-4775.

**SELLER: RONALD J. HAVERKAMP**

Auction Conducted by  
CLINE REALTY & AUCTION

John E. Cline, Broker/Auctioneer  
Onaga, Kansas • 785-889-4775

Website: [www.mcclivestock.com/clinerealty](http://www.mcclivestock.com/clinerealty)

## REAL ESTATE & HOUSEHOLD AUCTION

SATURDAY, APRIL 11 - HOME SOLD  
AT 12:30

21287 NW Snokomo Frontage

PAXICO, KS

DREAM HOME AT AUCTION



Ranch style w/walkout & native limestone exterior. Two rock fireplaces, 3162+sq ft, 4 bdrm, 3 bath, 2 car garage. All paved road w/lots of white vinyl fence. 19 acres M/L, borders Mill Creek nestled on a bluff w/SE access. 20 miles to Topeka - 30 miles to Manhattan.

OPEN HOUSE: Sunday, March 22 and March 29, 2-4 pm.

**GLEN HEISER ESTATE**

Murray Auction and Realty  
Steve Murray, Broker 785-556-4354  
Email: [smurray@fhrd.net](mailto:smurray@fhrd.net)  
[www.murrayauctionandrealty.com](http://www.murrayauctionandrealty.com)

## LAND AUCTION!

80± Acres Lyon County, Kansas



Saturday, April 4 at 10 AM  
Hays House • Council Grove, Kansas

- Land is located between Bushong and Council Grove 1-1/4 miles south of Highway 56.
- Selling the S2 NE4 section 19-16-10.
- Approximately 33 acres of creek bottom cropland.
- Balance in pasture, timber, and live creek.
- Excellent deer and turkey habitat...secluded!
- Full possession will sell for 2009.
- Ten percent down day of auction
- Closing in 30 days.

**Productive Harvey County Farms!**

For property details, contact:



**Chris Sankey, Agent**  
Council Grove, Kansas  
(620) 343-0456  
[csankey@farmersnational.com](mailto:csankey@farmersnational.com)

[www.farmersnational.com](http://www.farmersnational.com)

Farm Management • Real Estate Sales • Appraisal • Insurance  
Consultation • Oil & Gas Management • Conservation & Recreation

## A Lazy Half-Mile East of the Manhattan Airport

PHONE: 785-564-4092



Ask for  
**Larry Ruthstrom**

# Briggs

AUTO.COM

PHONE: 785-564-4092

WHOLESALE FLEET OUTLET

BRIGGS FLEET/LEASE VEHICLES

4810 SKYWAY DR, MANHATTAN, KS

**2007 DODGE 3500**

### 2006 CHEVY CREW CAB



4WD, Duramax, Power Windows & Locks, 57,000 miles.

**\$25,900**

### 2007 DODGE 3500



Quad Cab, 4WD, Diesel, Auto, Full Power, 51,000 miles.

**\$26,900**

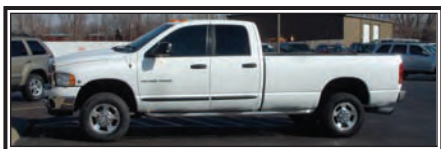
### 2007 C-4500



Crew Cab, Duramax Diesel, Allison Transmission, 12 ft. Dump Bed, Power Windows & Locks, Tilt, Cruise, Running Boards, Rear & Side Cargo Doors, Only 10,000 Miles.

**\$30,895**

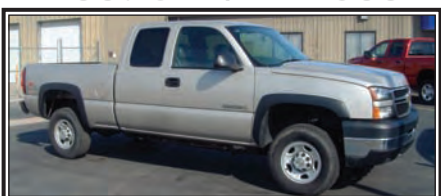
### 2005 DODGE 3500



Quad Cab, Auto, 5.9L Diesel, Full power, 4WD, 56,000 miles

**\$23,995**

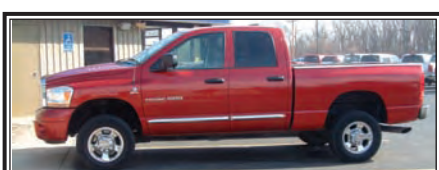
### 2007 CHEVY K-2500



Ext. Cab, 4WD, Cruise, 6.0L, 5th Wheel Hitch, 13,000 miles.

**\$20,995**

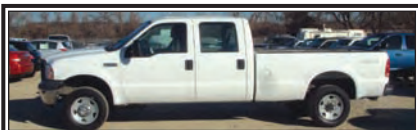
### 2006 DODGE 2500



Quad Cab, 4WD, 5.9L Diesel, Leather, Auto

**\$25,995**

### 2005 FORD F-250 XL



Crew Cab, long bed, tilt, cruise, 4WD, auto, 5.4L V8, only 20,000 miles.

**\$18,285**

### 2007 DODGE RAM 3500



Diesel, 4x4, 6 speed manual, 30,000 miles.

**\$29,895**

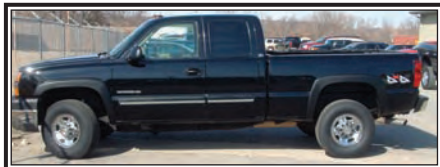
### 2007 CHEVY K-2500



Auto, 6.0L, 4WD, Cruise, 57,000 miles.

**\$17,495**

### 2004 CHEVY K2500



Ext Cab, 4WD, 6.0L, Power windows, 51,000 miles.

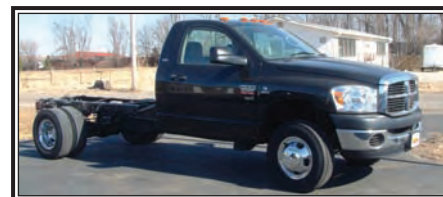
**\$17,995**

### 2003 FORD F-250



Auto, Powerstroke, 4WD, Lariat, 125,000 miles

**\$15,900**



2WD, 6 speed, Diesel.

**\$18,995**

### 2004 FORD F-450



Crew cab, 4WD, auto, diesel, XLT,

69,000 miles

**\$24,995**

### 2005 DODGE RAM 2500



Quad Cab, Full Power, Hemi, 44,000 miles

**\$14,900**

### 2007 CHEVY C-2500



6.0L, Auto, 31,000 miles.

**\$14,995**

[lruthstrom@briggsauto.com](mailto:lruthstrom@briggsauto.com) • [www.briggsauto.com](http://www.briggsauto.com)