

# GRASS & GRAIN

Published by **AG PRESS**

54th Year

No. 4

March 25, 2008

\$1.00



## Livestock auctioneer, radio voice retiring

By Frank J. Buchman

Sure have been lots of changes in the livestock business in the past six-plus decades.

There have been many transformations in the auction and sale barn industries as well.

One thing hasn't changed. "Auctions are still the best way to get the top dollar for your livestock, or whatever you want to sell," contended Col. Roger Johnson, Salina.

Certainly, if there is anyone who would know, it is Col. Johnson, a lifelong stockman.

Johnson started working at the Lindsborg Sale Barn as a teenager, became an auctioneer 44 years ago and, at age 76, is planning retirement from 40 years of employment at Farmers & Ranchers Livestock Commission Company, Inc., Salina.

Retirement recognition is planned at the barn Thursday, March 27, with a special invitation extended to all friends and customers. Refreshments will be served throughout the day.

"The biggest change I've seen has been the sharply lowered number of farmers and the much larger size of operations," Johnson insisted. "Used to be every corner had a farmstead. Farmers had a few cows and hogs, and would market their livestock at the local sale barn, which most of the

small communities had back then."

"Farmers used to feed out their cattle, usually a couple dozen on a typical farm. If they had twice that many, it was considered a big operation. Sale barns would sell a few hundred head of livestock a week and make a good living," Johnson continued. "Now farmers must have hundreds of head to make a go of it, and larger auction barns often sell several thousand cattle in a week."

Not only has Johnson been an auctioneer at the Salina pavilion, he's also served as a fieldman, visiting stockmen over a wide area, providing an approximate weight of their livestock and giving an estimate of what they will sell for at auction.

"I'd always spend at least two days a week in the country looking at cattle," Johnson reflected.

While he's recognized as a leading livestock auctioneer throughout the Midwest, it's for his livestock market reports on the radio that Johnson is probably known by the greatest number of people. "I've had a livestock market program on KSAL radio Monday through Friday mornings at 6:45, ever since I started here," Johnson recalled.

Those are live reports right from his office in the sale barn. Additionally,

Johnson has programs on KRVN and KFRM on Wednesday and Thursday mornings.

"Sometimes I have wondered if anybody was listening, but then if I say something wrong, everybody has to make sure I know it," Johnson revealed. "There was a woman who saw me in Salina one day, and said I was the best thing that ever happened to her."

"She told me she always has her radio on in the morning, but doesn't like to get up. Then when I come on, she can't stand listening to me, so she gets up so she won't have to," Johnson grinned.

Stepping down from his duties at Farmers & Ranchers Livestock won't leave Johnson with too much idle time. "I'll still be in the auction business, and we have quite a few sales lined up this spring," he admitted.

There was a time when Johnson would have 70-plus farm and other miscellaneous auctions annually, in addition to selling 100 days at the livestock pavilion.

Growing up on a diversified farm near Lindsborg, Johnson found he could work at the sale barn in town during high school and be excused from school. "I was just an alley boy then, but the auction and sale barn bug bit me pretty hard, because that's what I de-



Col. Roger Johnson visited with Farmers & Ranchers Livestock Commission Company manager Mike Samples last week in the lobby of the Salina auction pavilion where Johnson has worked 40 years. A retirement celebration, with refreshments and lots of reminiscing, is scheduled Thursday, March 27, during the regular twice-weekly auction.

ecided I wanted to do," he verified.

Entry into the business wasn't immediate though. Drafted into the Army during the Korean War, Johnson served in Spokane, Wash. Upon return with his wife, Lynne, and their first son, Johnson pursued his career choice.

"I asked Lonnie Wilson, who was running the Wilson Livestock Auction in Salina, if I could go to work for him," Johnson reminisced.

"He said no at first, but I changed his mind, and I started auctioneering there. I was plenty green."

However, Johnson did later attend the Reisch Auction School in Mason City, Iowa, continued selling at Wilson and was soon asked to conduct farm and household auctions. "One day I came out of the barn, and there waiting for me in a car were two of the owners of Farmers & Ranchers. They'd built this new barn in '64, I

believe it was, and they asked me to work for them."

"Laurence Clemence, Merrill Christiansen and Bob Muir owned it then. I started the next Monday. I've been here and on the radio ever since," Johnson calculated.

Along with his auction career, Johnson has always been involved in his own farming and livestock operations. "I have the home farm at Lindsborg and also own

*Continued on page 3*

## Riley County couple honored as Kansas Master Farmer, Farm Homemaker

By Kathleen Ward

Bob and Mary Mertz met in 1981 in her hometown of Chicago. Both were in the same department of the National Live Stock and Meat Board. They soon became known as the coworkers who were always butting heads ... for years.

He was a Kansas farm boy who'd come to direct efforts on state beef checkoff programs (pre today's \$1 national checkoff). She was an administrative coordinator who'd never seen a farm.

In one of those stranger-than-fiction developments, however, they finally did become friends. And, that opened the way to a life together that's now earned the couple a 2007 Kansas Master Farmer-Master Farm Homemaker Award.

The award honors those who have made a lifetime commitment to community service, environmental stewardship and agricultural leadership. It comes from Kansas State University Research and Extension and the Kansas Farmer Magazine, which each year select six couples from across Kansas.



Mary and Bob Mertz, Manhattan, have been selected as one of the six couples to be honored in 2008 as Master Farmer-Homemakers.

The 2007 winners will receive their award during a March 21, 2008 banquet in Junction City.

Today the Mertzes are the kind of family that at times has unusual visitors at their dinner table. Two years ago, they hosted a delegation

that included China's directors of agriculture and commerce.

"What surprised them was that my dad (Harold) dropped by, dressed for work. He was nearly 80 years old, but still putting in seven to eight hours a day on

the farm," Bob said. "And that's what the minister of agriculture found most interesting about his tour and visit — seeing someone who was still working so late in life. He said he wished they had grandfathers like that in his country."

One of last year's groups was legislative staff aides, who sat around the table discussing farm issues. Their visit probably resulted from the fact Bob has been president of the National Lamb Feeders Association and an advisor to its leadership school. Plus, he's currently a Kansas-elected member of Vote FBF (Farm Bureau Friend). That committee visits with and evaluates state and federal political candidates and monetarily supports those who are pro agriculture and rural communities.

On the farm itself, the visitors can range from K-State international tour groups to Ag in the Classroom kids. Mary's interests have extended the pool to include exchange students and missionaries.

For three years Mary was

local representative and overseas coordinator for an international exchange called Youth for Understanding. She's the current president of Project Rescue of Amazon Youth (PRAY), which got its start in Wamego and now is supporting a growing, multifaceted mission in Jacunda, Brazil. The mission shelters and cares for orphaned, abandoned and abused youngsters.

What Mertz visitors see first is often a limestone house, built in the 1860s and renovated into a comfortable tri-level. The flood of 1993 devastated the home's ground floor and led to the biggest changes, including moving the kitchen to a higher level and adding a garage and several rooms. Yet, the couple has worked to retain the historic character of a house built just after Kansas opened to settlers.

Bob credits his dad for the fact that the flood wasn't equally devastating for River Creek Farms.

RCF is a diversified family corporation, now managed by Bob and his brother

Joe — although "Dad doesn't hesitate to offer opinions." It includes thousands of rented acres about halfway between Manhattan and Wamego. The corporation has landlords who have been renting to the Mertz family for more than 40

*Continued on page 6*



## Over the Barn Gate

By Beth Gaines-Riffel

The change can happen quickly. In fact, from night to morning the change is obvious. And I, for one, am glad to see it happen. What, you might ask? The greening of the wheat and the hopeful arrival of warmer days.

I marvel annually at how fast this transition happens. It has an almost magical quality to it. And this year with Easter being so early, it was fitting that the change happened last week in the midst of Holy Week and the official arrival of spring. And let me tell you, I'm not the only one who has noticed the sprouts of enticing green, poking up through the layers of brown, dried grasses. A few of the more athletically inclined momma cows — i.e. the fence jumpers — have also got a hankering for the lush grasses now growing.

Sometimes in the daily 'busyness' of farming and ranching, it is easy to miss the transformations that

happen right before our eyes. Sort of like the frog that gets cooked by being placed in a pot of cold water and slowly warmed, bit by bit until the point of no return is reached.

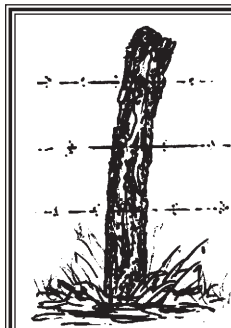
Calves suddenly arrive at market weight, wheat goes from green to ripe and the cycle continues.

I'm thankful that I have the opportunity to take part in the process. I honestly can't imagine not being able to watch it.

This week is the Salina Farm Show — as always we'll be stationed in lobby, ready to visit and take care of the business of subscription renewals and even sell you a G&G cookbook or two.

A special attraction will be the book signing by Gordon Morrison on Wednesday, from 2-4 p.m. I hope you'll take the opportunity to stop by and meet the G&G columnist during this time. This will be the only time during the farm show that his book, *Views from the Learning Post* will be offered for sale.

So, there you have it, I've got a big case of spring fever and I'm looking forward to the Farm Show in Salina. That's all for now and I'll chat with you next week, "Over the Barn Gate!"



## The Learning Post

By Gordon Morrison  
Concordia Rancher and  
Former Agriculture Educator

### Coping With Uncertain Times

Who would have dreamed a year ago or at harvest time last summer that the price of wheat would hit the \$12 mark and above? It is hard to make an accurate guess as to which direction the markets will take next month, next week, or even tomorrow.

I have observed that whenever there is a pot of money within reach, there are some who will jockey around, trying to figure out how they can get their hands on it. I guess it is only natural and probably lawful to do so, but in the scramble, often there are some who get hurt financially and sometimes rather severely. With grain prices soaring unbelievably high, there could be a huge pot of money for all agribusinesses to scramble for. As is often said, if it's not in the bin, one cannot count it yet. Even when it is in the bin, it has to be marketed and the money collected. Business has gotten so big and complex, one can be left holding the bag if he is not really savvy.

Being on the county conservation district board, I realize that some farmers are plowing up their pasture lands and CRP grass in order to cash in on \$10 or \$11 wheat. Some of these fields may be fragile and highly erodible, which could cause one to be in noncompliance for any government payments. Besides, there is no guarantee these extremely high prices will last. The Natural Resources Conservation Service would be a good place to visit before hooking onto one's plow.

Reports are that several farmers in western Kansas are unable to cash in on their 2007 wheat and corn crops because their grain is tied up in elevators of a business that is defunct. Chapter 7 involuntary bankruptcy proceedings are being pursued by creditors who are trying to recover money loaned to the business. This could be a lengthy process and the outcome uncertain. Situations such as this make me leery about the markets and the economy. I believe it is important to plan a strategy for avoiding unnecessary risks and to survive.

Below are a few suggestions; no doubt, you can add to the list.

(1) Don't be greedy and try for a home run to get rich quick; a sure hit to first may be safer.

(2) Be a good steward of your land. Don't break out virgin soil for a flash-in-the-pan scheme and then regret it when you have to protect it with costly soil conservation practices to keep it from eroding and to comply with the program.

(3) Use the expertise of the SCS people to ensure good conservation practices.

(4) When the markets are so extremely volatile and uncertain, exercise caution when marketing grains through commodity contracts.

(5) Plan to sell at three or four different times to obtain a good average in price. Sell at a price you can live with and be satisfied. No doubt, many farmers have sold part of their 2008 wheat crop at what seemed a good price only to see it continue to soar higher.

(6) A long delay for income tax purposes for taking payment for grain sold may be risky. The returns on your hard work, if not collected, can be a temptation for those who are hard pressed.

(7) If you are buying grains for feed, pay for it only after you have received shipment.

(8) Watch the condition of your home-stored grains, especially when it warms up. Check your bins often and treat or repair for safe storage.

(9) If you possibly can, deal with people you know and trust. Be trustworthy yourself.

(10) Operate under written agreements rather than verbal ones.

(11) Stay diversified and think twice before double-cropping; it often does not pay.

It is time agribusinesses, farmers, and ranchers stopped cannibalizing one another and drop the slogan, "the survival of the fittest"; instead, be fair in this business of agriculture.

Note: May and I plan to be at the Salina Farm Show at the Bicentennial Center on Wednesday, March 26, from 2 to 4 p.m. with our "Views from the Learning Post" books. Stop by to see us at the Grass & Grain table.

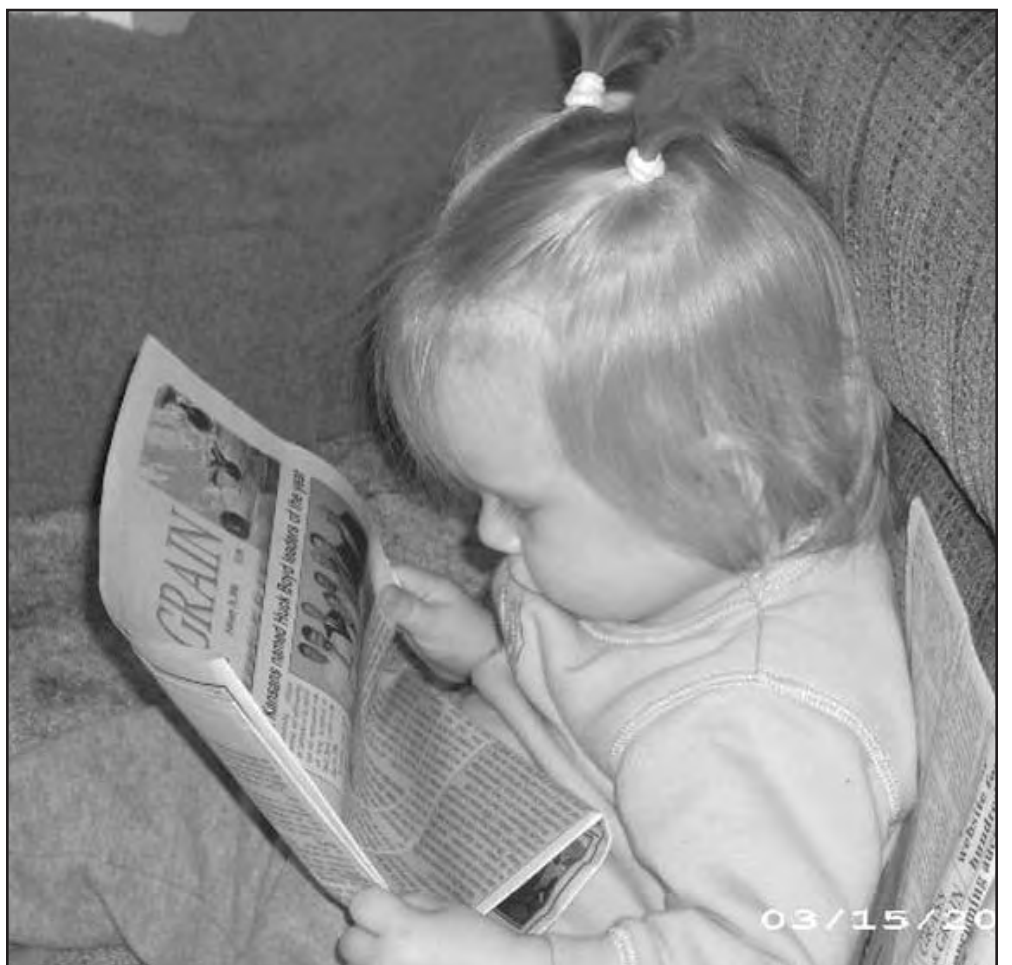
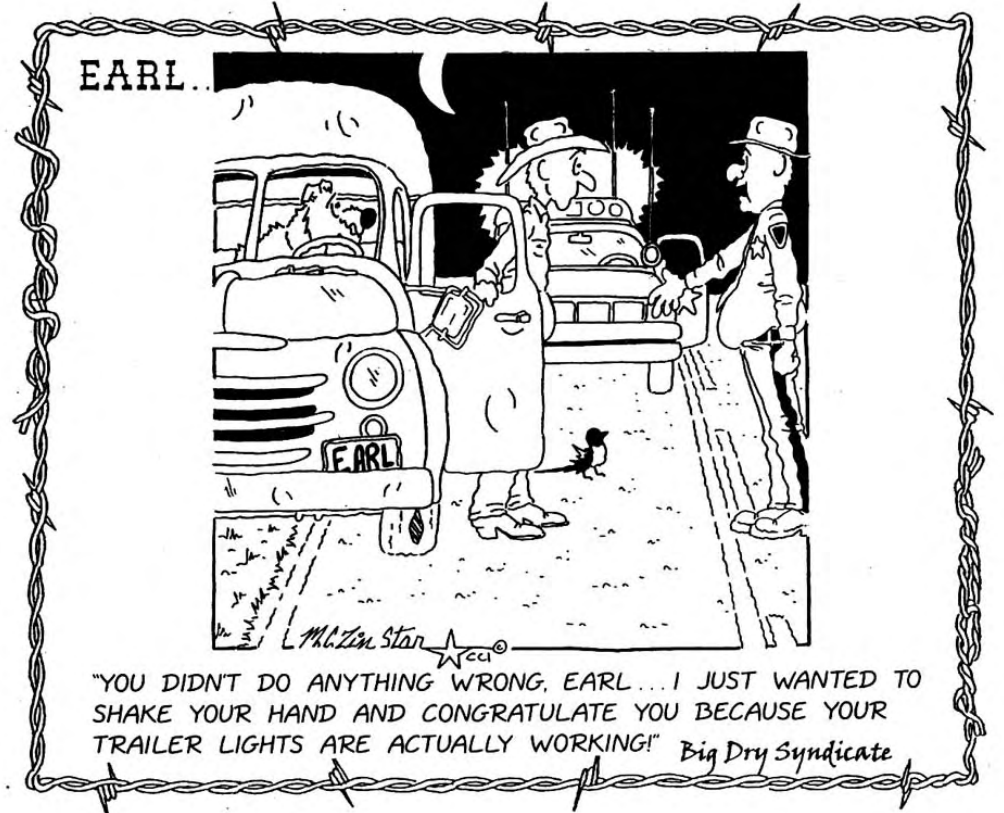
*The book Views from the Learning Post can be ordered from Gordon Morrison, 1268 Key Road, Concordia, KS 66901 or may be available in a store near you. For information, call 785-243-3833.*

## Salina Farm Show Special Attractions!

3/25 (9-5) • 3/26 (9-5) • 3/27 (9-4)

Meet Women's Page editor, Renee Whitney on Tuesday from 1-3 p.m. Pick up the popular G&G cookbook for all your spring gift-giving occasions!

Gordon Morrison Book Signing on Wednesday, March 26, 2-4 p.m.



We like to see our readers get an early start. Manhattan subscriber Wayne Goff's granddaughter, Madden Emaliegh Watts, who is a mere 14 months old has a good eye when it comes to finding interesting reading material.

**The real measure of your wealth is how much you'd be worth if you lost all your money.**

— Bernard Meltzer (1914-) American Law Professor



785-539-7558  
Fax 785-539-2679

Editor — Beth J. Gaines-Riffel  
gandgeditor@agpress.com

— Advertising Staff —  
Steve Reichert  
Peggy Giles  
Frank J. Buchman  
agpress2@agpress.com

**GRASS & GRAIN (USPS 937-880)**  
The newsweekly for Kansas and southern Nebraska, published each Tuesday at 1531 Yuma (Box 1009), Manhattan, KS by Ag Press, Inc. Periodicals postage paid at Manhattan, Kansas. Postmaster send address changes to: Ag Press, Box 1009, Manhattan, KS 66505.

**Subscription** — \$75 for 2 years. \$41 for 1 year, includes sales tax. Outside Kansas, \$48 for 1 year, \$89 for 2 years.

MEMBER OF  
Associated Press

# Johnson retires after 40 years of service to Salina auction market

*Continued from page 1*

some additional pasture land," Johnson qualified. "I always kept a cow herd, put up the feed and took care of the cows myself until the mid-'80s, when we started having so many auctions I couldn't keep up with it all."

His agricultural operations are now leased out, but Johnson remains involved in upkeep. "There are always thistles to pull and fence to fix, and I know where the good fishing holes are. I'll be spending more time doing that now that I'm retiring here," he declared.

The Johnsons have lived in Salina since the mid-'50s, raising four sons, and now they have seven grandchildren. "My wife has become the head babysitter," he acknowledged.

"Our boys still had to work on the farm when they were growing up," Johnson insisted. "Larry and Steve started helping me with auctions when they were just 12

years old. I mean they were selling, and they are still in the business with me." Son Ken is in the Air Force, and son Jeff passed away six years ago.

Always having a horse of his own and being interested in the horse business, Johnson and his partners conducted bi-monthly horse sales at Salina for 40 years. "We were one of the first bi-monthly horse sales in the country," he recognized. His partners were Al Soukup, Bob Perry and Bernard Iretton.

Also called upon to conduct purebred cattle auctions over a wide area, Johnson declared, "I did sell many purebred sales, actually mostly Herefords, and I did have one horse sale in Missouri. I never worked regularly at any other sale barns, after I started here. I had several opportunities, but I wanted to be loyal to my customers. They'd sometimes insist that I sell

their livestock here."

Sought to auction at youth livestock sales, Johnson served in that capacity gratis for several county fairs. "The hardest thing for those kids to understand was why their blue ribbon project would bring less than the white ribbon one, just because his dad had just bought a new tractor from the buyer," Johnson shared. "I'd tell them it may not be fair, but that's the way life is."

Not only has the size of farming operations expanded, but prices of commodities marketed by Johnson have multiplied, the auctioneer analyzed. "When I was a kid, calves would wean off weighing 400 pounds and sell for 25 cents. Farmers were making a good living, sending their kids to college and doing well."

"Now, calves often wean half again or more than that and sell for well over a dollar, and farmers can't make a living. It's the overhead: the

price of machinery, fuel, fertilizer. Everything's gone sky-high," Johnson figured.

Likewise land values have increased at least ten-fold. "I've sold pastures at auction for \$100 an acre, and now they'll sell for \$1,000 or more," compared Johnson, who has conducted a number of sales grossing over a million dollars during his career.

Although there may be a leveling of prices, Johnson pointed out, "They aren't making any more land, so it probably won't go down too far. What worries me the most is if these grain prices, now at a record level, would drop to where they were a few years ago, and the input costs stay up. It really does scare me, makes me shudder."

Johnson commented on problems in horse merchandising. "I've never seen the good horses sell any higher

than they do now," he confirmed. "Yet, the colt and non-trained horse market is under extreme pressure, because slaughter plants are closed, and there isn't a base price. That, along with all of these wild mustangs we taxpayers are feeding. I don't know where it's all going to end up."

Present trends in livestock marketing are forecast by Johnson. "I used to keep a notebook filled with farmer-feeder cattle buyers throughout the Midwest, and I would call them whenever we were going to have certain lots of cattle," he remembered. "Now, there aren't very many farmers who feed cattle. We sell most of our cattle to order buyers."

"I've really seen lots of changes in the cattle and auction business. The best thing about it though is all of the wonderful farmers,

ranchers, feeders and order buyers who I've had the opportunity to know and work for. I always tried to get the highest price for whatever I was selling. I never played any favorites," Johnson summarized.

Farmers & Ranchers Livestock is expected to continue prospering and growing, according to Johnson. "It's been a great 40 years, but it's time for me to slow down," he emphasized. "I'll keep busy with conducting auctions and rural real estate sales. I'm not quitting those."

"Roger certainly has been as dedicated employee as we could ever ask for here at Farmers & Ranchers. He has always been true blue to the company and a tremendous asset for us. We are definitely going to miss him," credited Mike Samples, sale pavilion manager for the past 20 years.

## QUITTING FARMING AUCTION

### SATURDAY, MARCH 29 — 9:00 AM

**AUCTION LOCATION:** 14 miles South on Highway 15 to Longford Rd. then 2 miles West to Limestone Rd. then 1/4 mile North, West side of the Road from CLAY CENTER, KANSAS.

**TRACTORS, COMBINE, TWO TON TRUCKS & CAR, BOAT, PLANTING EQUIPMENT, TILLAGE EQUIPMENT, ROTARY MOWER, AUGERS, GRAIN DRYER, GRINDER, SPRAYER & MISC. FARM EQUIPMENT, 4-WHEEL TRAILERS, GUNS, GRAIN BINS & SPREADERS: TO SELL AT 11:00 AM, Grain Bin Spreaders, FUEL TANKS, LIVESTOCK EQUIPMENT, HEDGE POSTS, SHOP TOOLS & FARM SUPPLIES, ANTIQUE FARM EQUIPMENT, YARD CARE.**

*See last week's Grass & Grain for complete listings.*

**AUCTIONEER'S NOTE:** Tractor and loader will be available day of auction. This is a complete dispersal of Walter and Evelyn Mugler farming operation. Hope to see you at the auction.

Mugler Auction Service LLC is agents only. Lunch served by Mizpah Church Ladies.

CASHIER: Shirley Riek

**WALTER & EVELYN MUGLER**  
**MUGLER AUCTION SERVICE L.L.C.**  
109 S. 4th Street - Clay Center, Kansas

Harold Mugler 785-632-3994 or Mobile 785-632-4994	Randy Reynolds 785-263-3394	Paul Geist 785-263-2545
---	--------------------------------	----------------------------

## ANTIQUe AUCTION

### SUNDAY, MARCH 30 — 10:00 AM

Auction will be held in Kenwood Hall at the Saline Co. Fairgrounds in **SALINA, KANSAS**

**ANTIQUES & COLLECTIBLES**

Farm brochures; 8 John Deere pocket ledgers, early construction brochures; 30 pc railroad paper; 1936 GWTW movie book; old catalogs; Lee Tire brochures; large assortment horse magazines; 1930 lube charts; 1936 Democrat convention book; large assortment postcards; WW II books & Manuals; 1940-50 Jack & Jill magazines; 1950 Children's Playmate magazines; large assortment military & airplane books; 1920s Neb Framer magazines; 1930 baseball magazines; large assortment older die cuts; assortment scroll saw patterns & books;

large assortment early auto paper; lunch box collection; Shaq & Jordan figures; assortment doll furniture; cast iron star shade cutter; farm toys; tobacco items; Barbie dolls; 1915, 1918, 1919 car tags; 100's matchbooks; 100's swizzle sticks; Victorian album w/pictures; farm tools; fishing reels & tackle, straight razors & boxes; Lee items; Floating Satellite space game; Rocket Launmcher space game; vintage Halloween; RR lock & keys; 200 mechanical pencils; jewelry; 1930's kids fishing set in tin; 1956 KU ashtray; vintage photo supplies; lots telescope/microscope/camera


lenses; vintage Rexall drug-store items; large Allis Chalmers calendar; Masonic/K of C/Knights of Pythias items; case 1950's tire repair kits; Hughes tool knife set; 15 tobacco tins; 100 wood yardsticks; Pottery & glass; 40 pcs Bauer dinnerware; 40 pc AH Wexford; 60 pc bubble glass; 8 pc McBeth Evans Monax; 20 pc Marcrest blue spruce; 10 pc Chintzware; Junction City ruby flash; signed paperweight; Franciscan mushroom dinnerware; Fostoria plates; Harker stoneware; MEIYO lithophane tea set; assortment of glass; large assortment of collectables.

*See last week's Grass & Grain for complete listings.*

**NOTE:** This is a large individual collection. Check our web site at [www.thummelauction.com](http://www.thummelauction.com) for pictures.

**Auction Conducted By**  
**THUMMEL AUCTION**  
Beloit, Kansas • 785-738-5933

Designed to **OUTPERFORM**  
**BUILT** to Outlast



**60-90 PTO HP NEW! MF 5400 Series**


Introducing The MF 5400 Series -- the new mid-range tractor with big-tractor features. All four models are packed with power, versatility and reliability, and offer you the performance choices you need to get more work done all day...every day.

- New-generation Perkins Tier II 4-cylinder diesels deliver higher torque, improved fuel economy and significantly reduced noise levels.
- The largest cab in the mid-range market -- with 61 square feet of glass -- features a new design and instrumentation layout and top-of-the-line HVAC, with 8 vents and a 4-speed fan.
- Choose 16 x 16 Speedshift, with 2-speed powershift for on-the-fly shifting, or 16 x 16 Powershuttle, for direction changes without clutching -- ideal for loader operations.
- Standard hydraulics deliver 15 gpm and feature two standard remotes and Electronic Lift Control, for quick response to changing field conditions.

Stop by your Massey Ferguson dealer today, and test drive the mid-size tractor that thinks big.

<b>HILLSBORO</b> Ag Power, Inc. 620-947-3182	<b>AUBURN</b> Garrett Ranch Supply 785-256-2372	<b>LAWRENCE</b> Shuck Implement 785-843-8093
--	---	--

**KALVESTA - Kalvesta Implement - 620-855-3567**

  
WHAT TO DEPEND ON

## FARM AUCTION

### SATURDAY, APRIL 5 — 10:00 AM

#### RANDY BABBITT

**130 North 100 Road — OVERBROOK, KANSAS**

**No small items. Please be on time.**

<p><b>TRACTORS</b></p> <p>2006 Kubota M 105X MFWD, 469 hrs., cab air, heat, electric powershift w/shuttle, 2 remotes, 3 pt. PTO, 18.4x34 w/Kubota LA 1301S loader</p> <p>1995 White 6175 MFWD, approx. 3000 hrs., 511 hrs. on complete new engine, cab air, heat, 3 remotes, 3 pt. PTO, new 18.4x42</p> <p>Westendorf XTA 700 loader w/8' bucket</p> <p>Westendorf pallet forks</p> <p>JD 4020 diesel, syncro, recent engine overhaul, 18.4x34</p> <p><b>HAY EQUIPMENT</b></p> <p>2003 JD 4995 windrower, 710 cutter hrs., 914 engine hrs. w/14'6", 944 rotary head w/impeller</p> <p>2007 JD 468 baler, 3614 bales w/net wrap, mega wide plus, 21.5x16.1 tires</p> <p>Hesston 12 wheel rake</p> <p>Gehl 1250 chopper w/3 row 30 &amp; hay head</p> <p>NH 390 tub grinder w/like new hammers &amp; new belts</p> <p><b>MISCELLANEOUS EQUIPMENT</b></p> <p>Mon o Mixer 1460 TMR w/hay</p>	<p>kit, new chain &amp; pan on discharge</p> <p>Gehl 95 mill mixer, hammers have never been turned</p> <p>Case 100 bu. auger cart</p> <p>DMI 6X plow</p> <p><b>CATTLE EQUIPMENT</b></p> <p>Bar 6, 1200 lb. cake feeder, electric</p> <p>3 stall creep feeder</p> <p>Several cattle panels</p> <p>WW portable loading chute</p> <p>4 ton holding bin</p> <p><b>VEHICLES</b></p> <p>2007 Elite 7'x26" aluminum stock trailer</p> <p>1989 Kenworth T600-3406 Cat, 15 speed, 713,000 miles, sleeper, new 24.5 rubber</p> <p>1980 Ford F-350 4x4 w/rebuilt engine, 8' steel flatbed</p> <p>2004 Honda Rancher AT, 4 wheeler</p> <p><b>CONSIGNED BY BOB ROHE</b> For more information call 785-979-5075</p> <p>JD 785 hydra push tandem axle spreader w/hyd. gate, 16.5x16.1 rubber, like new</p> <p>Hydra F/KR-flaker, used 1 season, done approx. 300 bales w/hyd. drive</p>	<p>Hydra feeder-HF 1200 cake box, like new w/hyd. drive</p> <p>34 Winkler 12' corral gates on trailer</p> <p>1980 Ford F700 diesel, 5&amp;2, single axle w/Simonson 3 compartment feed body</p> <p><b>CONSIGNED BY HERITAGE TRACTOR</b> For more information call 785-594-6486</p> <p>1989 JD 2355 2-wheel, 5135 hrs., R.O.P.s, 16.9x30</p> <p>1980 JD 2940, 2-wheel, 4956 hrs., 16 speed hi/lo, 18.4x34</p> <p>1975 JD 2840, 2-wheel, 18.4x30 w/Westendorf TA 26 loader, bucket &amp; spear</p> <p>1981 Ford TW 30 MFWD, 2761 hrs., dual power, 18.4x38 w/duals</p> <p>JD 6x4 Gator, 177 hrs.</p> <p>JD 4x2 Gator</p> <p>IH 1460 combine, 4x4, 3450 hrs., chopper</p> <p>C-IH 1020, 22' flex</p> <p>Hesston 560 round baler, 540 PTO, push bar, converging wheels, good belts</p> <p>Westendorf TA76 loader w/8' bucket w/JD large frame tractor mts.</p>
--	--	--

**For more information call Randy Babbitt, 785-393-2501.**

[www.gehlingauction.com](http://www.gehlingauction.com) • email: [gehling@gehlingauction.com](mailto:gehling@gehlingauction.com)

### Sale conducted by: GEHLING AUCTION, INC.

**Box 250, Preston, Minnesota 55965**

**AUCTIONEERS:** Denny Brusse, 23-45, Ron Gehling 23-46, Dave Holstad, Roger Bullerman, Matt Gehling 23-94  
**CLERK:** Gehling Auction Co., Inc. • [www.gehlingauction.com](http://www.gehlingauction.com) • email: [gehling@direcway.com](mailto:gehling@direcway.com)

**GRASS & GRAIN** *Our Daily Bread*  
 \*\*\*\*\* By G&G Area Cooks \*\*\*\*\*

*Mary Rogers, Topeka, Shares Easy Recipe With Grass & Grain Cooks*

Winner Mary Rogers, Topeka:  
**CROCK-POT BEEF TIPS & NOODLES**

- 2 pounds lean beef tips
- 2 cans cream of celery soup
- 1 can cream of mushroom soup
- 1 onion, diced
- 1/4 teaspoon pepper
- 1/4 teaspoon salt

In a 5-quart slow cooker, combine beef, soups, onion and seasonings. Cook on low setting for 8 hours or until beef is tender. Serve over cooked noodles.

\*\*\*\*\*

Kathy Hogue, Topeka/  
 Alma:

- OREO DELIGHT**
- 1 large package Oreo cookies
  - 8-oz. package cream cheese
  - 1 stick butter
  - 1 cup powdered sugar
  - 3 cups milk
  - 2 packages vanilla instant pudding
  - 1 teaspoon vanilla
  - 12-ounce container whipped topping

Crush cookies in food processor. Put half in bottom of a 9-by-13-inch buttered glass pan. Cream together cream cheese, butter and powdered sugar. Add milk, pudding, vanilla and whipped topping. Blend well. Pour over cookies and top with other half of Oreos. Freeze until firm. Thaw slightly to serve.

\*\*\*\*\*

Mrs. Helen Winsor,  
 Grantville: "Good served with ham."

- POTATO CASSEROLE**
- 30-ounce package frozen shredded hash browns, thawed
  - 2 cups (16 ounces) sour cream

- 2 cups shredded cheddar cheese
- 1 can cream of chicken soup, undiluted
- 1/2 cup chopped onion
- 1/4 cup butter or oleo, melted
- 2 tablespoons chopped fresh parsley
- 1/2 teaspoon pepper
- 1/4 teaspoon salt

In a large bowl combine all ingredients. Transfer to ungreased 2-quart baking dish. Bake uncovered at 350 degrees for 1 hour. Yield: 8 servings.

\*\*\*\*\*

Sandy Hill, Eskridge:  
**CUTIE PIES**

- 2-layer size package yellow cake mix
- 1 cup cold milk
- 4-serving size package vanilla flavor instant pudding & pie filling
- 1 1/2 cups thawed whipped topping, divided
- 4 squares baker's semisweet baking chocolate

Preheat oven to 350 degrees. Prepare cake batter and bake in 24 greased medium muffin cups as directed on package. Cool 10 minutes in pans. Remove to wire

racks, cool completely. Pour milk into large bowl. Add dry pudding mix. Beat with wire whisk for 2 minutes or until well blended. Let stand 5 minutes to thicken. Meanwhile, using a serrated knife, cut cupcakes horizontally in half. Gently stir 1/2 cup of the whipped topping into pudding. Spoon about 1 tablespoon of the pudding mixture onto bottom half of each cupcake; cover with top of cupcake. Microwave remaining 1 cup whipped topping and the chocolate in small microwavable bowl on high for 1 1/2 minutes or until chocolate is almost melted, stirring after 1 minute. Stir until chocolate is completely melted and mixture is well blended. Frost each cupcake with about 1 1/2 teaspoons of the chocolate mixture. Refrigerate at least 15 minutes before serving. Store leftover cupcakes in refrigerator. Makes 2 dozen.

\*\*\*\*\*

Kellee Rogers, Topeka:  
**FLUFFY CHOCOLATE PIE**

- 2 1/2 cups miniature milk chocolate kisses
- 12-ounce carton thawed whipped topping, divided
- 9-inch graham cracker crust
- 20 miniature peanut butter cups, chopped

In microwave-safe bowl, melt kisses and stir until smooth. Cool slightly. Fold in 3 1/2 cups whipped topping, until blended. Spread half of the chocolate mixture into crust and sprinkle with peanut butter cups. Top with remaining chocolate mixture. Chill for at least 30 min-

**KTK BARNYARD QUILTING**  
 Machine Quilting & Quilts  
 Reasonable Rates  
 785-692-4346

utes. Top with remaining whipped topping.

\*\*\*\*\*

The remaining recipes are from Millie Conger, Tecumseh:

- RED VELVET COOKIES**
- 1 1/4 cups flour
  - 1 tablespoon cocoa powder, unsweetened
  - 1/2 teaspoon baking soda
  - 1/2 teaspoon salt
  - 1 stick unsalted butter
  - 3/4 cup sugar
  - 1 large egg
  - 1 tablespoon red food coloring
  - 1 1/2 teaspoons vanilla
  - 1/2 cup buttermilk
  - 2 cups confectioner's sugar
  - 2 tablespoons corn syrup
  - 4 oz. semisweet chocolate

Preheat the oven to 350 degrees. Line a baking sheet with parchment paper. In a bowl sift the flour, cocoa, baking soda and salt. Beat 5 tablespoons butter with the sugar until fluffy, 3 minutes. Beat in the egg, food coloring and 1 teaspoon vanilla. Beat in the flour mixture alternately with the buttermilk until smooth. Place 1/4 cup scoops of batter 2 inches apart onto the baking sheet

and spread out. Bake until a toothpick in the center comes out dry, 12 to 15 minutes. Let the cookies sit for 5 minutes, then transfer to cool. In a bowl whisk the confectioner's sugar, 1/2 teaspoon vanilla, 1 tablespoon corn syrup and 2 tablespoons hot water until smooth. In another bowl combine the chocolate, remaining 3 tablespoons butter and 1 tablespoon corn syrup. Microwave until melted, about 1 minute. Coat the cookies with the vanilla icing then put chocolate on half the cookie. Refrigerate about 20 minutes until set.

\*\*\*\*\*

**PINEAPPLE SMOKIES**

- 1 cup brown sugar
- 3 tablespoons flour
- 2 teaspoons ground mustard
- 1 cup pineapple juice
- 1/2 cup white vinegar
- 1 1/2 teaspoons soy sauce
- 2 pounds miniature smoked sausages

In a saucepan combine the sugar, flour and mustard.

Gradually stir in the pineapple juice, vinegar and soy sauce. Bring to a boil over medium heat; cook and stir for 2 minutes or until thickened. Add sausages and stir to coat. Cook uncovered for 5 minutes longer or until heated through.

\*\*\*\*\*

- PHYLLO CRAB CUPS**
- 8-ounce package cream cheese
  - 2 to 3 tablespoons horseradish sauce
  - 3/4 cup chopped imitation crab meat
  - 1 tablespoon chopped green onion
  - 2 packages frozen miniature phyllo tart shells

In a bowl beat the cream cheese and horseradish until smooth. Stir in the crab and onion. Spoon 2 to 3 teaspoons into each tart shell, sprinkle with paprika. Place on a baking sheet and bake at 350 degrees for 16 to 18 minutes or until tops begin to brown. Makes 2 1/2 dozen.

\*\*\*\*\*

**Wild West Action**  
**Saturday, April 5, 2008**  
 7 A.M. to 1:30 P.M.  
 Heritage Christian School, 3102 N Topeka Blvd.  
 TOPEKA, KANSAS

**Shot Action begins at 7:00 AM**

Features handmade and one-of-a-kind unique crafts, sports memorabilia & equipment, home and garden décor, tools, toys, gift baskets, car services, health & beauty, photography packages, luggage, bed and breakfast package, electronics and more!

**Live Action begins at 10:00 AM**

Includes fabulous vacation package to Disneyland, playhouse, discovery airplane flight, bicycle, Royal Daulton china, guitar, I-Rel, TCT tickets, landscaping, chaise lounge, picnic table, Leapster game system, fine jewelry, original art!

**Don't Forget To Visit G&G Online!**

*The new Grass & Grain homepage offers free services available to all readers — print and online.*

- Calendar of Events
- G&G Country weather information
- North America auction listings
- USDA Market Reports
- "Our Daily Bread" weekly recipe
- Photo of the Week
- Online classified ad placement
- Online subscription service

**You can add the online version to any current print subscription for ONLY \$24!**

Go To **www.grassandgrain.com**

**FIND WHAT YOU WANT AND NEED IN**

Since 1954

**GRASS & GRAIN**  
 Published by AG PRESS

**PRINT SUBSCRIPTION**

- 3 Years \$101<sup>00</sup>
- 2 Years \$75<sup>00</sup>
- 1 Year \$41<sup>00</sup>

*The above rates are for Kansas, western Missouri, and southern Nebraska (zip codes beginning with 640 through 645 and 660 through 689).*

**OUTSIDE AREA**

- 3 Years \$122<sup>00</sup>
- 2 Years \$89<sup>00</sup>
- 1 Year \$48<sup>00</sup>

**ONLINE SUBSCRIPTION**

- 3 Years \$101<sup>00</sup>
- 2 Years \$75<sup>00</sup>
- 1 Year \$41<sup>00</sup>

**ADD ONLINE TO YOUR PRINT SUBSCRIPTION FOR \$2 A MONTH**

- 1 Year \$24<sup>00</sup>
- 2 Years \$48<sup>00</sup>
- 3 Years \$72<sup>00</sup>

**Call Toll-Free: 877-537-3816**  
 or **785-539-7558**

**Subscribe online: grassandgrain.com**

MAIL TO (please print):  
 Name: \_\_\_\_\_  
 Address: \_\_\_\_\_

GRASS & GRAIN • BOX 1009 • MANHATTAN, KS 66505

## Hold The Mayo! Avocados Make A Better Spread

(NAPSA) — Before you spread another spoonful of mayo onto your sandwich ... think again. You can add all the buttery flavor and the richness you want by going for an avocado instead. They are packed with nutrients and are superspreadable. Grown in their ancestral home where rain and sunshine enhance the nutrient-rich volcanic soil, Hass avocados from Mexico are the creamiest.

### Healthier For Your Family

The authentic flavor of avocados from Mexico, available year-round, adds zing to your sandwiches and makes them healthier. Avocados have nearly 20 vitamins, minerals and phytonutrients, contain unsaturated fats — the good kind — and have no cholesterol. Mayonnaise has negligible nutrients and can have as much as 100 calories per tablespoon. You get half that — only 50 calories — in one-fifth of an avocado.

### Pick the Perfect One

Perfect for spreading on your turkey club, scooping on top of your burger or layering onto your BLT, Mexican avocados are fresh, taking only four days from orchard to market. Avocados do not ripen until



they are picked. As they get closer to the perfect ripeness, they become soft to the touch and the skin turns from green to almost black. To speed up the process, place them in a paper bag and leave them on your counter at room temperature.

Sandwiches are called "tortas" in Mexico; try this one.

### AVOCADO & BEEF TORTA

1 ripe Mexican Hass avocado  
1 tablespoon lime juice  
1/2 teaspoon salt, divided  
Pinch ground red pepper  
1/2 teaspoon ground cumin  
1/2 teaspoon chili powder  
1 pound flank steak  
12- to 14-inch Italian loaf  
1 cup torn salad greens  
1 ripe large tomato, thinly sliced

Preheat broiler. Cut avocado lengthwise around pit;

twist halves to separate; strike pit with a knife blade and pull to remove; scoop out pulp with a spoon; place in a small bowl. Mash avocado with a fork; stir in lime juice, 1/4 teaspoon of the salt and red pepper; set aside. In a cup, combine cumin, chili powder and remaining salt. Rub seasoning mix over both sides of steak; place on broiler rack. Broil 2 to 3 inches from heat, until cooked as desired (about 5 minutes on each side for medium). Remove to cutting board; let rest for 5 minutes; cut diagonally in thin slices. Cut bread horizontally almost through. Spread avocado on top half; layer greens, beef and tomato on bottom; close sandwich. Cut crosswise in 4 pieces. Serves 4.

Visit [www.avocadosfrommexico.com](http://www.avocadosfrommexico.com) for more recipes.

## Free Weekly Recipe Available Online

Included as part of Grass & Grain's website is a "Free Weekly Recipe." You need not be a subscriber to view this recipe. Just go to [www.grassandgrain.com](http://www.grassandgrain.com) and at the bottom left click on Our Daily Bread Free Weekly Recipe.

Some recipes will be selected from submissions received from area cooks while others may be suggested favorites. You may also share the recipe with friends and family by clicking on the "email page" button.

This week's Free Weekly Recipe is from Mary Rogers of Topeka and is for Overnight Egg Casserole.

## Everyone Wants Flaky Pie Crust

If you are having trouble achieving flaky pie crusts — try this. Chill the fat and the liquid before adding them to the flour. When combining the fat with the flour, you can crumble some of it finely, but make sure to leave some larger pieces as well. Fat that is rubbed into the flour until it has a sandy texture will promote tenderness, but

it's the larger pieces that separate the layers and slowly melt in the oven, that promote flakiness. For a piecrust that is both tender and flaky, use half chilled butter and half room temperature shortening. The shortening will add tenderness; the butter, flakiness. Just be sure to leave the butter in pieces at least as large as peas.

## Prize for APRIL

### "Our Daily Bread" Recipe Contest Prize ROOSTER SERVEWARE BOWL



Measures  
8" x 6 3/4" x 4 3/4"

Get a look that's straight-from-the-farm with this ceramic Rooster Sereware Bowl! Use this bowl to serve side dishes, fruit and much more

Send Your Recipes Today!

## AUCTION SATURDAY, APRIL 5 — 10:00 AM

1450 Granite Road - MINNEAPOLIS, KANSAS

From Minneapolis, KS on Highway 106, 1 mile East to 135 Rd., South 5 miles on oil road to auction site. From Bennington, on Highway K-18, 1 mile West to 170th Rd., North 2 miles to Granite Rd., West on Granite 3 miles to auction site.

### CONSISTING OF GUNS, LIKE NEW MERCURY GRAND MARQUIS CAR, TRUCKS, FARM MACHINERY AND EQUIPMENT AND ANTIQUE JOHN DEERE TRACTOR.

**ANTIQUES, GUNS, CAR**  
2005 Mercury Grand Marquis, car loaded, white in color, only 9,000 miles, just like new; 2 Winchester Model 97 shot-guns, 12 ga.; 1950 John Deere Model A row crop tractor, electric start, roll-a-matic front end, one owner.

### TRACTORS

1981 John Deere 4240 tractor, diesel, cab air heat, quad range transmission, 3 pt., PTO, dual outlets, 18.4x38 rubber; 1972 John Deere 3020 diesel tractor, standard trans., 3 pt. PTO, single outlet, 16.9x34" rubber.

### TRUCKS

1974 GMC 6000 truck, 350 V8 motor, 4x2 transmission, 900x20 rubber with 18 ft. Tradesminds bed with rollover tarp; 1964 Chevrolet 60 truck, 265 V-8 motor, 4x2 trans., 16 ft. giant bed, 900x20 rubber; 1960 Ford F-600 truck, V-8 motor, 15.5 ft. bed with fold down racks, 8:25x20" rubber.

### COMBINE, FARM MACHINERY & EQUIPMENT

1981 6620 John Deere diesel combine, cab, air, heat, c hopper with 222 John Deere header, batt reel, 28-26 rubber; John Deere 653 row head, 6 row on 30"; Allis Chalmers orange 630 cornhead, 6 row 30"; John Deere 6600 diesel combine, hydro trans., cab, air, heat, chopper, 20 ft. header;

United Farm Tools 400 bu. grain cart; John Deere 145, 6x16 semi mount plow; Sunflower 16 ft. center hyd. fold off-set disc; Sunflower 14 ft. center hyd. fold off set disc; John Deere 16 ft. tandem disc, manual fold; Krause Model 4100 field cultivator, 3 section with 3 row drag; Crustbuster 28 ft. harrow converted to anhydrous applicator; John Deere 4 section drag harrow; 2 John Deere 8350 grain drills on John Deere puller hitch, 20x8"; homemade 3 pt. cultivator; John Deere 6 row, 3 pt. curler; John Deere 3 pt. rotary hoe, 16 ft.; row ditcher, 3 pt. 6 row; row crop cultivator, 6 row on 30", 3 pt.; John Deere 32B pull type field sprayer, 12 row; John Deere No. 5 sickle bar mower; IHC side delivery rake; BMB rotary mower; John Deere 205 rotary mower, 5 ft., 3 pt.; John Deere 110 chuck wagon on JD 4 wheel running gear; John Deere Model H manure spreader; 10" x 60 ft. grain auger, PTO drive; 8' x 50 ft. grain auger, PTO drive; 8" x 20 ft. grain auger with 10 hp. Wisconsin motor; Big Ox blade, 9 ft., 3 pt.; truck mount electric drill fill auger; fuel barrel on stand.

### SHOP & HAND TOOLS

Shop Smith; Duracraft grinder; floor press; assortment of hand tools.

**AUCTIONEER'S NOTE:** For a complete auction listing on the internet, go to [www.ksallink.com](http://www.ksallink.com) and [www.wacondatrader.com](http://www.wacondatrader.com)

**TERMS:** Cash. Not responsible for accidents. All items sell in "as is, where is condition". Statements made day of sale take precedence over printed matter. Lunch by United Church Youth Group.

**MURPHY FARMS INC, OWNERS**  
William "Bill" Murphy - 785-392-7091



Sale Conducted By:  
**BACON AUCTION CO.**  
Royce K. Bacon, Auctioneer • 785-392-2465



## A perfect night's sleep for you or someone you love!

Flex-A-Bed is the adjustable bed for people who:

- Have active lifestyles
- Suffer from injuries or chronic illnesses
- Need a great night's sleep every night!

**\$1,099**

**BAKER FURNITURE & CARPET**  
Since 1897

123 N. Walnut • Peabody, KS • 1-800-344-2144  
OPEN 7 DAYS A WEEK: Mon.-Sat. 8:30-5:30; Sun. 1:00-4:30  
[www.bakerfurnitureandcarpet.com](http://www.bakerfurnitureandcarpet.com)

## AUCTION COINS-COINS-COINS-COINS SATURDAY MARCH 29 — 10:00 A.M.

530 Bury Street — TONGANOXIE, KANSAS  
(2 blocks south of First State Bank & Trust downtown Tonganoxie)

**Auctioneer's Note:** This is a Great Auction with over 350 Lots of coins. Over 100 Morgan Dollars with over 60 pcs. Unc. Auction held inside of building with snack bar, restrooms and lots of seating. Thanks, John.

This is only a very small listing of what is to be auctioned. Coins to be sold in catalog order.

Visit [www.kansasauctions.net/shoemaker](http://www.kansasauctions.net/shoemaker) for complete list.

100 pcs. Of Morgan dollars-60 pcs. Uncirculated. Indian head cents-100 pcs. 2000 wheat cents, Large cents, 100 pcs. Barber dimes, 1844-CC Morgan MS-63 certified, 1890-CC Morgan, 1878-CC Morgan, Seated dimes & quarters, Large cents, two & 3 cent pcs., Half dimes, Shield nickels, Beautiful American Indian Medal collection from Franklin Mint 1975 Proof with 50 Silver coins. MUCH more not listed.

**AUCTION BY:**  
SHOEMAKER AUCTION SERVICE  
1-913-845-3600  
ID Required to bid  
Complete list: [www.kansasauctions.net/shoemaker](http://www.kansasauctions.net/shoemaker)

## So Many Plants! ... so little space!!!

### Try Container Gardening!

Safe to Plant NOW →

New Shipment Garden Pots!

10 kinds of Heuchera!  
(exciting purple, peach, silver, or lemon foliage!)

10 kinds of Grasses!  
(deep blue fescue, dancing ponytail grass, dark purple spikes and more!)

100's of kinds of Herbs!  
(parsley, sage, rosemary, and thyme & lots more!)

- Pansies • Violas • Snaps
- Petunias • Allysum
- Snowflake Bacopa
- Flowering Kale & More

**Veggie Gardeners:**

- 6 kinds of Onion Plants!
- 7 kinds of Seed Potatoes!
- Prepackaged Bulk Seed!
- Frost-Proof Veggie Plants!

Proven Winners  
**PW Certified Garden Center**

**OPEN SUNDAYS & HOLIDAYS, TOO!**  
**Eastside & Westside Market**  
E. Hwy 24 or W. Ft. Riley Blvd. Manhattan  
Just look for the Watermelon Sign!!!

## MARCH "Our Daily Bread" Recipe Contest Prize

### APPLE PAPER PLATE HOLDER

Make your kitchen more fruitful! This wooden paper plate holder measures 14 7/8 by 11 5/8 by 4 3/8 inches and can be hung on the wall.

The winner each week is selected from the recipes printed.

Send us your favorite recipe. It may be a main dish, leftover, salad, side dish, dessert, or what-have-you.

1. Check your recipe carefully to make certain all ingredients are accurate and instructions are clear.

2. Be sure your name, address and phone number are on the entry. Please include a street address with your recipe entries. A post office box number is not sufficient for prize delivery. Allow 3-4 weeks for delivery.

3. Send it to: Woman's Page Editor, Grass & Grain, Box 1009, Manhattan, KS 66505.  
OR e-mail at: [agpress2@agpress.com](mailto:agpress2@agpress.com)

## PAYLESS OPTICAL

### EYEGLASS PACKAGES AT 50%-75% OFF IN COMPARISON TO OTHER OPTICALS

**OUR PRICES ARE NO BULL**

SPRING IS ON ITS WAY, SO WE HAVE CREATED AN OPPORTUNITY FOR YOU TO BUY A PAIR OF SUNGLASSES AND A REGULAR CLEAR PAIR AT HUGE SAVINGS. EVEN BETTER THAN OUR ALREADY FABULOUSLY LOW PRICES!

**BUY A PAIR, GET A SPARE AT 1/2 PRICE**  
Buy a pair of SINGLE VISION, LINED BIFOCALS, or NO-LINE STD. PROGRESSIVES with Scratch Coat/UV and/or a Tint, at regular price and RECEIVE A SECOND PAIR OF THE SAME LENS STYLE FOR HALF PRICE.  
\*Both pairs of eyeglasses must be purchased at the same time, for the same person, and same Rx.  
†Branded progressives and Trifocals are not included in this promotion. Not valid on glasses already on order.  
‡Cannot be combined with any other promotional price or discount. Must be presented at the time of order.

**\$39<sup>95</sup>\*** SINGLE VISION (READING OR DISTANCE) COMPLETE W/FRAME

**\$89<sup>95</sup>\*** BIFOCAL COMPLETE W/FRAME

**\$109<sup>95</sup>\*** STD. PROGRESSIVES (NO-LINE BIFOCALS) COMPLETE W/FRAME

CHOOSE FROM OVER 1,500 FREE FRAMES WITH EVERY LENS PURCHASE SELECTION INCLUDES FAMOUS DESIGNERS

**We Can Fill Any Doctor's Prescription!\***  
1316 WESTLOOP • MANHATTAN  
CORNER OF WESTLOOP SHOPPING CENTER  
 **785-537-1574**

VISIT OUR WEBSITE: [WWW.EYEGLASSOUTLETS.COM](http://WWW.EYEGLASSOUTLETS.COM)

ALL NORMAL RX'S INCLUDED UP TO A +0.75 OR -3.00 DIOPTRIC SPHERE AND A -2.0 DIOPTRIC CYLINDER. ADDS UP TO 3.00 PLASTIC LENSES ONLY. FREE FRAME INCLUDED WITH LENS PURCHASE WHEN LENSES INSERTED INTO STORE FRAME. NOT VALID WITH CUSTOMER'S OWN FRAME. SEE OUR BROCHURE OR OPTICIAN FOR DETAILS.

# Mertz family has worked together for success

Continued from page 1

years. It also rents land that Mertz family members own individually.

"Things were wet in '93, but it was setting up to be a tremendous year. The corn was doing well. The beans were already waist-high," Bob said. "We were pretty closely monitoring what the Corps of Engineers had to say, though. We're only about 10-15 miles downstream from Tuttle Creek Lake's dam.

"In the end, Dad was the one who had the foresight — perhaps because he'd been through the flood of '51. One day he just said that we'd better start cleaning up the facility now. We needed to move up, tie down or relocate anything we didn't want to float away."

With neighbors' help, in three days the Mertzzes

were able to empty the grain bins; batten down the barns; and move the cattle, sheep and machinery to higher ground. For another two, they cleared out the first floor of their three homes, even pulling up the carpet. Then, even though the Corps of Engineers had announced it was opening the dam, Joe and Bob went out to try to rescue the irrigation motor, too.

The flooding was six inches deep when they reached bottomland. So, they might have succeeded if the water near the pivot pad hadn't obscured a gopher hole big enough to swallow a tractor tire.

By the time they'd dislodged their vehicle, the water had risen a lot — with strangely little force and no noticeable flow. It was just under spark-plug level when they managed to save themselves.

By the next day, the Kansas (Kaw ) River was hillside to hillside over River Creek Farms.

Despite the difficult tasks the flood left behind, however — and even her early, rather drastic transition from urban Chicago — nothing has shaken Mary's feelings about Kansas. Back when she thought of Bob as just a friendly shoulder to cry on, he'd scheduled a trip home for a Mertz family event. He invited her to come along to see her first farm, and the die was cast.

"It was a completely different world! I could not

believe I was seeing all of that beauty, all that open land, the pastures, the livestock. His family and everything they have been doing together for four generations was so wonderful, too," she said. "I fell in love immediately.

"I think I may have started falling in love with Bob then, too. In fact, I've wondered if he had ulterior motives in inviting me to the farm. I'd known him as a businessman on Michigan Ave., but I learned who he really is in Kansas. Besides, we hadn't been back in Chicago very long before he asked me why we'd never dated each other.

And, later on, I realized I was in love with that man from Kansas."

The Meat Board's general reaction when Bob and Mary announced their engagement was shock. Co-workers had missed signs of their growing friendship, so had no idea that they'd also begun dating.

Once married, the couple decided it was time to leave the skyscrapers of the city for the silos of rural life: They'd go home to Kansas, farm and rear kids.

Daughter Lisa is now a junior in German and international studies at Bob's

alma mater, K-State. She's on her second long-term trip to Germany, this time studying abroad on a scholarship.

Son David graduated from Wamego High School last spring, after racking up honors in 4-H, school and future business leader activities. He's now a K-State freshman, studying engineering.

Bob has advised both children to get a degree and work for someone else for a while before deciding whether they want to join the family corporation.

Continued on page 7

**CENTRAL KANSAS**  
AG AVIATION  
**STEVE DONOVAN**  
Cellular 785-366-0513 or Office 785-258-3649  
P.O. Box 246 Herington, KS 67449  
Located east of Herington at the Former Military Airfield



**ASTRO BUILDINGS**  
Custom Designed Buildings  
Strong Construction Insured Crews  
1-800-591-5898  
AstroBuildings.com

Starting at \$17,779  
36' x 60' x 14'

Call for a Free Quote Today!

Starting at \$31,219  
54' x 80' x 16'

Acreage Agriculture Equestrian Commercial

\*Price includes delivery, erection & sales tax. Prices valid through April 30, 2008. Freight & crew travel, if required, not included. Upgrades & options available for additional charge. Buildings pictured may differ slightly in size, any optional features not included in special prices.

**Auction purple wave**  
mcbride auction™  
Live Auctions

**Saturday, Mar. 29 | 10 a.m.**  
7709 S. Seneca - Haysville, Kan.  
**Tyson Farm Equipment Auction**  
1988 Case 7120, 1979 John Deere 4240, 1978 GMC 6000 grain truck, International 1440 actual flow combine, Brown land leveler, 1970 Chevy C-50 grain truck, 1987 F-150, and more.

**Internet Only**  
Purplewave McBride Internet only auctions held every last Tues of the month. Preview items at:  
2300 N. Nelson Dr. Derby, Kan.  
Open Mon.-Fri. 9-5, Sat. 10-3  
877-728-7253 (toll free)

**Bid now at purplewave.com**  
Building the largest local market in the world

**— MUELLER HOG SLATS —**  
INDIVIDUAL CONCRETE, SELF-SPACING SLATS  
Ideal for remodeling your facility!  
Also for new construction.  
Spacings: Up to 1"  
Lengths: 2 to 10"  
Call or write For Information



**Midwest Products**  
PO Box 396 • Hanover, KS  
1-800-371-2252 • 785-337-2252

**Back Pain & the DRX9000™**

**Non-Invasive. Non-Surgical.**

With the DRX9000™, You Can Take Hold of Your Life Again!

- Reduce your back pain.
- Reduce your symptoms.
- Reduce your disability.
- Improve your quality of life

**About the DRX9000™**

- The DRX9000™ is effective in treating low back pain associated with herniated discs, bulging discs and degenerative disc disease, allowing patients to return to an active lifestyle.

**Treatments on the DRX9000™**

- Consists of 20 sessions over a period of six weeks.
- Each session lasts 30 minutes.
- Following each therapy session, a cold pack and/or electrical stimulation is applied to help restore muscle tone.

**Common Causes of Back Pain**

- The discs in your spine act as shock absorbers. Herniation or "bulging" of the discs may occur due to wear and tear. This is one of the most common causes of lower back pain.
- Disc degeneration can occur when the spongy disc dries out. over time or with injury, discs may dry out, tear and put pressure on the nerves. The result is muscle tension and back pain.

**Now Accepting Blue Cross -Blue Shield**  
Dr. Scott D. Iversen  
630 Poyntz • Manhattan, KS  
Call Today! 785-776-7568

"The DRX9000™ is designed to relieve pain and promote healing."

**AUCTION**  
SATURDAY, MARCH 29 — 10:00 AM  
The following farm machinery, livestock equipment, tools and miscellaneous will sell at public auction. Located at Jct. Of 130 Rd. and Jackson Rd. From CHANUTE, KS, Jct. Of Hwy 39 and 169, South on 169 Hwy. 11 miles to Jct. Of Hwy. 47, then East on Hwy. 47 6 miles to Jackson Rd., then 2 miles North on Jackson Rd. Or from PARSONS, KS, Jct. Of Hwy. 400 and Hwy. 59, North on Hwy. 59, approx. 12 miles to Jct. Of Hwy. 47, then West on Hwy. 47 5 miles to Jackson Road, then North on Jackson Rd. 2 miles to sale location.

**FARM MACHINERY**  
2390 Case tractor, cab, air, duals, 3 pt., PTO; 1070 Case tractor, duals, 3 pt., PTO, dual hyd., no cab, sells with TA28 Westendorf loader; 830 Case tractor, 3 pt. and PTO, dual hyd.; MF 750 combine with cab, with 20 ft. header; 9 ft. MF No. 1486 pickup attachment; IHC No. 227, 2 row cornhead; CIH No. 4800 field cultivator, approx. 24 ft. with 3 bar mulcher; Krause No. 4100 field cultivator, approx. 28 ft.; Krause No. 4900 disc, approx. 28 ft.; Bush Hog disc, approx. 24 ft.; Case 12 tandem disc; AC 11 shank chisel; 3 pt. track scratcher; JD 7100, 8 row planter with monitor, 3 pt.; JD No. 494, 4 row planter; SMC No. 2064 fertilizer spreader; 500 gal. sprayer, pull type; Bush Hog No. 2615 hyd. fold rotary mower; AC small round baler; 8 ft. BMB hyd. tilt blade, 3 pt.; 3 pt. rotary hoe; 3 pt. Rhino post hole digger, approx. 20 in. bit; 8 ft. cultipacker; 5 ft. rotary mower, 3 pt. or pull;

AC sickle mower; WW hammer mill; Case ensilage cutter, old; 2 - 2 wheel trailers.

**TRAILER & ATV'S**  
2 Parker gravity flow No. 2000 wagons on GN truck axles, both have metal covers; GN stock trailer, approx. 6x18 ft., homemade; Honda FourTrax 300; aluminum ramps.

**TOOLS & EQUIPMENT**  
Portable Winco generator; Clark arc welder; Craftsman table saw; bench drill press; mitre saw; battery charger.

**LIVESTOCK EQUIPMENT**  
Top Hand squeeze chute; approx. 60 cattle corral panels; 2 stock tanks; 5 polytron feed bunks; rectangular hay feeder.

**MISCELLANEOUS**  
Snapper 50 in. riding mower; 500 gal. fuel tank with elect. pump; 300 gal. fuel tank and stand; sulky rake; junk iron.

**CONSIGNED**  
GN 6x20 stock trailer, full top, 8 bolt wheels.

**AUCTIONEER'S NOTE:** There is not a lot of miscellaneous items. PLEASE BE ON TIME.

**TERMS ON PERSONAL PROPERTY.** Cash or approved check. Must have positive ID to bid. Nothing removed until settled for. Not responsible for accidents or theft. Lunch and restroom available.

**VERN HEILMAN & BARBARA HEILMAN**  
AUCTIONEERS:  
Larry Marshall, 620-378-4356 Olin Goins, 620-433-2561  
Mark Garretson, 620-839-5320  
CLERKS: Gayle Garretson & Dedra Cavaness

**HONDA**  
BEST ON EARTH  
2008 Honda FourTrax Rancher 4x4  
TRX420FM8  
MSRP \$5399  
SALE \$4899  
DRIVE A LITTLE...SAVE A LOT  
Garber's 56885 Hwy. 136, Fairbury, NE 68352  
402-729-2294



Recommended for riders 16 years and older. Be a responsible rider. For rider training information or to sign up for a rider training course, call the ATV safety institute at 1-800-887-2887. Surcharge may apply. While supplies last.



**REAL ESTATE AUCTION**  
200 ACRES M/L, HOUSE & OUTBUILDINGS  
FRIDAY, APRIL 4 — 10:00 AM  
Bern Community Building, 416 Main Street — BERN, KS

NW 1/4 and SW 1/4 of the NE 1/4 8-2-13. 1420 184th Rd., Nemaha County, Ks.

104 tillable acres, remainder pasture, timber and homestead. 2 story farm house, 5 bedrooms, 1 bath, country kitchen, basement, attached garage. 40' x 90' machine shop metal bldg., implement shed, large open pole bldg., livestock shed, large cinder block barn, needs work. 2 good wells, spring water.

**TERMS:** 10% due day of auction. Balance due and possession on closing or before May 5, 2008, except for the house, the sellers may need 90 days to get everything moved. 2007 taxes are \$1,233.70. 2007 taxes and before will be paid by the seller. 2008 taxes will be prorated at closing. Sale is as is. Sale subject to owner's approval. Statements made sale day take precedence.

**JOE & MILLIE BAUMAN - 785-336-3868**  
BILL HOWARD, AUCTIONEER & REAL ESTATE SALESMAN  
785-742-2335  
www.howardauctionservice.com  
King Realty, Broker 785-742-7355  
www.king-realty.com

**AUCTION**  
SATURDAY, APRIL 5 — 10:00 AM  
Douglas County Fairgrounds  
LAWRENCE KS. 66046  
(21st and Harper watch for signs)  
Collectibles, Antiques, Pottery, Advertising, Gas, Railroad, Miscellaneous.

National cash register model #33 1895; harvest cradle, c. 1890; wood cash register; old harvest rake; East Lake Victorian bed (Walnut) c.1890; Jenny Lind bed c.1910; pine dry sink c. 1900; round oak table & 6 Bentwood chairs; several nice wall and mantle clocks; 19th century child's rocker; old oak office chair; 3 scarce salesmen's samples, 12 movie posters; 4 framed Coke calendar sheets; Hitler Mein Kamph broadside; 3 framed sheet music, 6 flats of sheets music; 12 place setting Johann Haviland, rose pattern; **Glassware:** 10+ Roseville, Van Briggle, Roycroft, Greentown, ruby flash, Meakin; boxed crystal salt set; 20+ Hummel's; Schoenhut child's piano; Coins: wheat/Indian head pennies, barber dimes, mercury dimes, silver dollars, flying eagle cent, seated liberty and more; **KU Jayhawk items:** early 20's scrapbook, '23 & '29 paperweights, stadium ashtray, Rosemead salt/pepper, set of 6 Phog Allen authored/co-authored books, scarce James Naismith "Basketball Its Origins and Development; Fredrick Remington bronzes: "Mountain Man" and "Bronco Buster"; very scarce Normal Training School pennant (now

Pittsburg State Univ.); 15 old quilts; **Collection of 50+ Gas Station items:** White Crown Globe/original base, gas/oil tins, attendant uniform, pump signs, set of oil jars, and more; **Collection of 30+ wood advertising boxes:** Coke cooler, old children's wagon and scooter; antique wagon jack; **Collection of 40+ advertising signs/thermometers;** antique boxed horse collar (hand made locally); barn lantern; glass sets in graded sets; Keen Kutter foot pedal grinder; old dentist chair; hog oiler; large box of Jenny Wren tins; coal bucket/shovel; **Collection of 75+ graniteware, some scarce;** pocket knives; carnival/circus game pieces; 10 scales (cast iron and others); **Collection of 40+ Sante FE items;** 2 cruet sets; framed native American artifacts, catline cards; Victrola and 78 rpm records; Sudlow print; 2 older bird cages; old baby carriage, large doll crib & bassinet; golf clubs; storage cabinets; misc. kids toys; auto dog restraint; hard gun case; tool box; box of insulators; assorted comics; kids large battery operated riding truck; and lots of miscellaneous plan on spending the day it will be a fun auction.

**Terms:** Cash or Check w/proper ID. Statements made day of auction take precedence over all printed material. Auctioneers are not responsible for theft, damage or accidents. Concessions by Happy Trails Chuckwagon

**PAXTON AUCTION SERVICE**  
785-331-3131 or 785-979-6758  
Auctioneers: Chris Paxton & Doug Riat





# BAXTER BLACK

ON THE EDGE OF COMMON SENSE

## I Like Oil

I must confess I like oil and I like factory farming And I think factory health care is absolutely charming

And factory education lets us school the huddled masses

While Conoco and offshore rigs produce our natural gases.

Factory transportation is a middle seat in coach

It's soccer moms in minivans, the thrifty man's approach.

If there ain't no fancy Learjet parked outside your bungalow

It still means you can pack your lunch and stand in line and go!

I love the pharmaceuticals that've given us new life From cancer cures to botox shots, reduced our stress and strife

And doubled up our lifespan, though you hear them cursed a lot

By the very ones whose world they've changed, I guess they just forgot?

Forgot that all the coal they hate gave birth to industry That heats our homes and gives us cars and opportunity

And jobs, and time to stop and rest, take respite from the toil.

We built a country, good and great, with blood and sweat and oil.

There's some who sneer and denigrate what we call factory farming

Though we can feed the multitudes, they find it most alarming

"They're using everything," they say, "to make it

more efficient. And cheaper for the common folks. Do they think that they're omniscient?

Folks, there's nothing wrong with gardens or organic, we all know The problem is most can't afford food that costs so much to grow.

If the world was a perfect place, the 'complaining' crowd's ideal

We'd have no impact on the earth, bananas with no peel,

Forests without clear cut tracts, factories without smoke,

No endless freeways, windmill farms, no global warming jokes.

But none of us, 'specially farmers, likes the crowding and pollution

But with the help of oil and gas, there came a revolution

Where people could find work to live, and improve their situation

And farmers who could feed themselves, were asked to feed the nation.

And we who till and mine and build your malls and schools unending

Leave footprints with each concrete pour that take millennia in mending

The search to give us all good lives, and all ... not just a few,

Should also strive to make our tracks less harmful when we do.

So here we sit on God's green earth, each one a worker bee

Contributing our own small part to have prosperity

And I for one am thankful what oil and factory farming gave

For if we'd stopped each time they whined, we'd still live in a cave!

### MANHATTAN SHOE REPAIR

#### Repairing

- Boots
- Shoes
- Purses
- Luggage
- Back Packs
- Ball Gloves

M-F • 8-5:30 • Sat. • 8-1  
216 South Fourth  
Manhattan, KS  
785-776-1193

### AG LIME FOR NORTH CENTRAL KANSAS

HAULING & SPREADING  
GEARY GRAIN, INC.

Junction City, Kansas 66441

785-238-4177

Toll-Free: 877-838-4177

## Briggs AUTO GROUP



'08 GMC Sierra 2500, Stock # G8-422, 4WD, ext cab, vinyl, 6.0L V8, 6-spd auto, pwr w/l, remote keyless entry, AC, cruise, integrated trailer brake, cargo mgmt system, heavy duty trawling package. Only \$26,389.38 with all rebates and Business Choice, ends 3/31/08.



Come see your  
work truck specialist  
**RICK EBERT**

**GMC**

WE ARE PROFESSIONAL GRADE.

**Briggs GMC • (888) 899-0138**

2312 Stagg Hill Rd., Manhattan, KS  
More work trucks at [BriggsAuto.com](http://BriggsAuto.com)

## Emergency fund can reduce stress

The Consumer Federation of America reports that two-thirds of unexpected expenses involve medical care or motor vehicles, said Carol Young, Kansas State University Research and Extension financial management specialist.

Last year, Americans spent an average of \$2,000 for such emergencies, she said.

With savings in an emergency fund, consumers can typically pay the unexpected bills without having to borrow or run up a credit card bill, either of which can add interest and stress, Young said.

If not in the habit of saving, setting money aside for an emergency fund may seem a monumental task. Saving as little as \$10 a week, however, can be a good goal, said Young, who advised setting a reasonable goal — \$250 to \$500 — and then adding to it.

She recommends accumulating savings equivalent to one to two months' salary.

"After reaching the goal, keep saving to reduce debt and build financial security," Young added.



"R.J." Black  
STANDING  
MAMMOTH

**WORMAN'S  
HARNESS SHOP**

Chaps & Chinks  
Mule Saddles  
Custom Harness  
Repair Harness & Saddles

M.E. (Jack) Worman  
525 N. Kipp Rd.  
Salina, Kansas 67401  
785-823-8402



This farm was homesteaded by my grandparents. That means a lot to me. My kids grew up here but now live in the city. They visit often, but the tradition their great grandparents established is little more than holiday conversation.

My kids don't want this farm or the long-distance hassles of working with a renter, but I've made sure the wealth represented by this land passes to them. I worked with the KSU Foundation to reduce my tax obligation and transfer the farm's wealth.

My kids may never get this dirt under their nails, but I have guaranteed that my grandparents' legacy and three generations of hard work will not end with me. Granddad would be proud.

To learn more, contact the KSU Foundation Gift Planning department at 800-432-1578 or [www.found.ksu.edu](http://www.found.ksu.edu).



Available at the Salina Farm Show! March 25, 26 & 27

**"Our Daily Bread"**  
**GRASS & GRAIN**

**RECIPE COLLECTION COOKBOOK**

*Great Gift Idea for Birthdays, Mother's Day,  
Graduations, Showers & Weddings!*



**Just \$11.00**  
*tax included*

**Contains over 200 favorite Grass & Grain recipes including:**

*Appetizers, breakfast, soups & salads, sandwiches & side dishes, main dishes, breads & muffins, desserts, cookies & candy and some this & that!*

**Special Shipping Incentives:**

- Receive 1 or 2 books for a single \$5.00 shipping fee
- Receive 3 to 8 books for a single \$12.00 shipping fee

**SAVE SHIPPING COSTS:** Buy at the Grass & Grain office, 1531 Yuma, Manhattan, KS

**Order Toll-Free!**

**Call Grass & Grain - 877-537-3816**

To All of Our  
Friends & Customers

Please Join Us On  
Thursday, March 27  
to Honor

**ROGER JOHNSON**  
On His Retirement

After 40 Years of Dedicated Service  
to Farmers & Ranchers Livestock  
Commission Co.

Serving Cake & Ice Cream  
Throughout the Day

All of us at F&R want to thank  
Roger for all the good years and  
wish him the best in his  
well earned retirement

**BRIGGS COMMERCIAL VEHICLE SALES**

**2004 DODGE  
RAM 2500**



4WD, Hemi,  
leather! **\$19,995**

PHONE: 785-565-5220

785-410-5451



**2005 DODGE  
RAM 1500**



Hemi,  
48,000 miles **\$17,900**

**2006 FORD F-350**



Reg Cab, 4x4,  
6 speed, XL,  
38,000 miles **\$25,900**

WHOLESALE FLEET OUTLET  
BRIGGS FLEET/LEASE VEHICLES  
4810 SKYWAY DR MANHATTAN, KS 66502



Ask for  
Larry

**CONTACT LARRY RUTHSTROM**

**2006 DODGE  
RAM 1500**



Hemi,  
20 inch wheels,  
4WD **\$20,900**

**2006 GMC  
K-3500**



33,000 miles,  
Duramax, 4x4,  
1 owner **\$27,395**

**2005 FORD  
F-350**



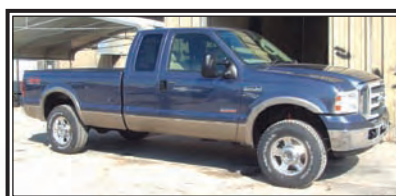
Powerstroke, Auto,  
4WD, Flatbed,  
52,000 miles. **\$22,495**

**2003 DODGE  
RAM 3500**



Hemi, 4WD, Auto,  
53K **\$17,495**

**2006 FORD  
F-250 EXT CAB**



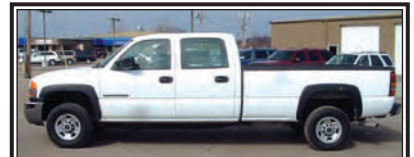
13,000 miles,  
Lariat, 4WD,  
Powerstroke **\$29,900**

**1994 DODGE  
3500 2WD**

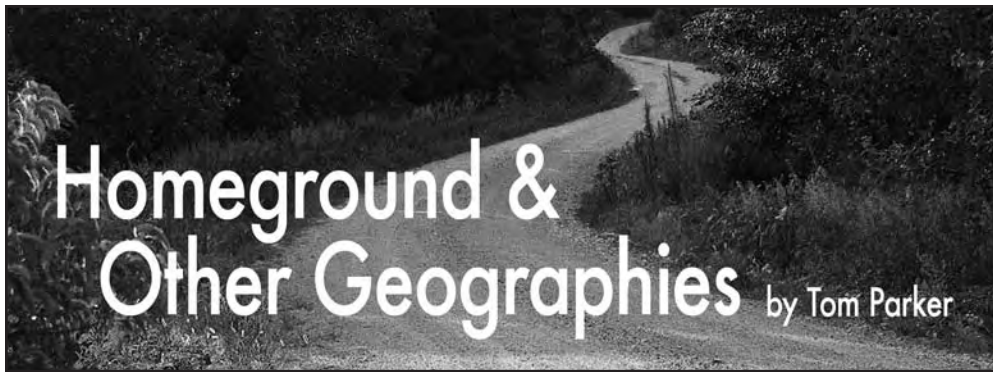


Cummins, Auto,  
83,000 miles. **\$7,995**

**2006 GMC  
C-2500**



6.0L, Auto, 2WD,  
63,000 miles. **\$16,995**



# Homeground & Other Geographies

by Tom Parker

## The geography of home

I stood behind a hand-hewn log cabin moldering back into the raw elements of a minor side draw branching off Cottonwood Canyon. The skies to the south were Oklahoman, the skies above Coloradan. A stone wall, collapsed in places, showed a regularity at odds with such rough terrain. In a small clearing behind the cabin a corral was set back in the trees, and below, in an oak-shaded

gully, a trickle of water bubbled, the green shoots of watercress bright against colorless boulders fallen from the cliffs above. Dark clouds scudded overhead. An occasional Chihuahuan raven soared past.

I walked to the stone wall and sat on a large flat rock. A canyon wren chattered. My emotions were suddenly raw, tears a blink away.

It was like coming home only different, a return to a

topography that I had once called home. It felt more like home than home did. Pinyon-juniper woodland, rocky bluffs secreting ancient petroglyphs, shattered stone flutes and box canyons and so far from my prairie home. Different birds. Different trees. Dif-

ferent grasses, shrubs, rocks. Different in every way, once so familiar and loved, now, after an absence of fifteen years or so, immediate and unchanged.

My companion, Chod, wandered off in search of the wren. Suddenly queasy with longing, I hunched over and closed my eyes. All that came to mind was a fragment of a Whitman poem, which I repeated over and over as if it alone had the power to save me. O my soul. O my soul.

I wondered if I could ever again be content in Kansas.

\*\*\*

When I step out our front door, or the door we call the front, which is really one of

the side doors, there being two of them, and this being rural Kansas meaning nobody uses the front door when the side door is closer to the kitchen or the driveway or whatever other applicable reason that makes sense, I see the northernmost ridges of the Flint Hills rising a hundred feet above the Blue River Valley. To my left is a gray tangle of trees bordering Juganine Creek, an ephemeral stream normally dry or choked with

fallen leaves. Only the spire of the church steeple and the white monolith of the grain elevator mark the town beyond those woods. To the west a plowed field slowly lifts to a bisecting dirt road and skies that stretch unbroken to the edge of the planet. This has been our home for eight years, and there's no place I'd rather live.

But it has not always been easy.

Continued on page 11

## RETIREMENT FARM & LIVESTOCK EQUIPMENT AUCTION

WEDNESDAY, APRIL 2 — 10:00 AM

LOCATION: From Shallow Water, KS, 6 miles West on Rd. 70 to Falcon Rd, 2 miles South and 1 mile West on Rd. 50.

**TRACTORS & COMBINE**  
1995 JD 8300 tractor, 5230 hrs., 3pt, pto, quick hitch, 16 spd. ps trans., duals, nice; 1995 JD 8200 tractor, duals, 5880 hrs., 3pt, pto, quick hitch, 16 spd. ps trans., nice; 1978 Case 2290 tractor, 3pt, pto, ps, 4378 hrs.; 1978 Case 2590 tractor, 3pt., pto, duals; 1965 JD 4020 tractor, wheatland, ps, otter front dozer blade; Ford 881 tractor, 3pt, pto, 10 spd. trans.; 1982 Gleaner L2 combine, hydrostat, 2150 separator hrs., big motor, 24ft. platform; UTF 500 bu. grain cart w/ rollover tarp.

**TRUCKS & PICKUPS**  
1983 IHC truck, tandem, auto trans., AC, 20ft. bed & hoist, rollover tarp; 1976 Chevy truck, tandem, auto, V-8 motor, AC, 22ft. bed & hoist, rollover tarp, 42,885 mi.; 1973 Chevy truck, V-8 motor, 4spd. trans., 16ft. bed & hoist, rollover tarp, 30,760 mi.; 1968 GMC truck, 4spd. trans., V-8 motor w/ Harsh mixer box, 33,430 mi.; (2) 1958 Ford trucks, 242 motor, 4spd. trans, 16ft. bed & hoist; 1985 Chevy Silverado pickup, auto., 305 motor; 1974 Ford Ranger XLT pickup, auto., V-8 motor, 80,927 mi.; 1985 GMC Sierra pickup, auto, V-8 motor, flatbed; 1986 Chevy Silverado pickup, auto., V-8 motor.

**FARM EQUIPMENT**  
Flex King 7x5 sweep plow w/ pickers; Krause 7x5 sweep plow; Richardson 6x5 sweep plow w/ pickers; Richardson 5x5 sweep plow w/ pickers & NH3 attach.; Richardson 5x5 sweep plow w/ harrows; Crustbuster 40ft. springtooth w/ harrows; Krause Model 1950 24ft. disk w/ degelman harrows; Wilbeck 20ft. disk; Krause 16ft. disk; Miller 40ft. rodweeder; Miller 40ft. rodweeder w/ harrows; Wil-rich 45ft. field cultivator w/ harrows; Blue Jet 3pt. caddy; Krause 32ft. tandem disk; Krause 16ft. tandem disk; Crustbuster 32ft. folding drill, 12"; 1997 Case 900 cyclo planter, 8-row, monitor, lift assist; Blue Jet 8-row strip till unit, markers, piston pump, 1400 gal. tank; (3) JD 8x12 LZ hoe drills; 20" Crustbuster double disk drill, pto, 10"; (2) 14" IH 150 hoe drills, 10"; IH 510 disk drill; (2) Rotary harrows, 3pt.;

\*\*\*Large equipment to sell at approx. 12:30 pm. \*\*\*  
Terms: Cash or approved check day of sale. Everything sold as is. No warranties expressed or implied. Not responsible for theft or accident. Announcements day of sale take precedence over printed material. Lunch served.

**S&K FARMS**  
**GORDON SCHMIDT & ROLAND KOEHN, ETAL - OWNERS**

For information call Gary Schmidt at (620) 874-0009  
SALE CONDUCTED BY: BERNING AUCTION INC.  
P.O. Drawer Q, Leoti, Kansas 67861 • 620-375-4130  
"Don't Trust Your Auction To Just Anyone!"  
Russell Berning Ed Simon Sage Davis  
Leoti, KS Marienthal, KS Scott City, KS

## AUCTION

SATURDAY, MARCH 29 — 10:00 AM

As we are selling the farm, the following sells located from LYNDON, KS, 5 miles North on Hwy. 75, then 2 1/2 miles East on 205th.

2004 Belarus 8311 tractor, synchro, dsl., 3 pt. w/Westendorf TA 26 loader, 875 hrs.; IH 560 G tractor, NFE, 2 pt.; IH M tractor NFE; Hesston 1120 pull type swather, good; JD 346 rd. baler w/Farmhand accumulator; Farmhand 10 bale fork; IH No. 16 rake; 2 flatbed 4-wheel wagons; 2 pt. to 3 pt. adaptor; plastic 2-man boat; several pipe panels; 3 big bale rings; 2 round stock tanks; 2001 Dodge Laramie SLT,

NOTE: Good cross-section of items, from farm to antique. MANY, MANY OTHER ITEMS.

KEVIN & PAM VAUGH, SELLERS

Beatty & Wischropp Auctions  
Lyndon, KS • 785-828-4212  
website at: www.beattyandwischropp.com

extended cab pickup, 4WD, AT, V-8, shortbed; 2 antique library tables; antique oak dresser; antique wooden rocker; small drum table; antique china creamer; antique oak rocker; some arrowheads & marbles; selection of tools, building, plumbing, electrical supplies; some glassware and furniture; assortment of old money, and some good foreign money. Coins sell first at 10 AM

## AUCTION

1:00 pm CST

TUESDAY, APRIL 8, 2008

1,423+/- Acres of recreational/ranch land in the beautiful Flints Hills of Kansas.

Property located in Wabaunsee County, 4 Miles West & 3 Miles South of Alma KS  
Alma Community Center  
1050 Ohio Street  
Alma, KS 66401  
Minimum Reserve Auction

Panoramic views of the rolling grass countryside, numerous springs, creeks, ponds & wildlife galore. Located in world renowned Unit 14 for Deer & Unit 2 for Turkeys.

Ranch buyers will be impressed by the magnitude of pasture contained by one exterior fence. The entire ranch is accessible on all sides by good county road.

Please call Aaron or Dax or refer to <http://flinthillsranch.propertyarchive.com> for Full Sale Bill, Manner & Terms.

Hayden Outdoors and Premier Outdoor Properties will conduct personal tours to interested buyers by appointment only and will have the ranch available to potential purchasers on March 29 & 30 and April 5 & 6 from 1:00 pm to 4:00 pm. Call Hayden Outdoors or Premier Outdoor Properties to schedule your appointment today!

Agent for the seller:

Aaron Graham  
428 S Bryan Circle, Ste 100  
Gretna, NE 68028  
402-932-5499



Aaron@PremierOutdoorProperties.com

Agent for the seller:

Dax Hayden, Hayden Outdoors  
1613 Pelican Lakes Point, Suite 201 Windsor, CO 80550  
970-674-1990  
Dax@HaydenOutdoors.com

Participating with

Cabela's TROPHY PROPERTIES™

www.CabelasTrophyProperties.com

## FARM AUCTION

SATURDAY, APRIL 5 — 10:00 AM

LANE, KANSAS

The following machinery and equipment will be offered at public auction located 1 mile West of Parker, KS on 2100 Rd., then 3 miles North on Devlin Rd. to 2400 Road then 1/4 mile West.

**TRACTOR**  
2001 New Holland TX100 diesel w/2,070 hrs. cab w/great air, regularly serviced with Westendorf TA-26 loader (tractor and loader will be sold separate and then combined for highest bid).



20'x6'6" gooseneck stock trailer, 2001.

**EQUIPMENT**  
NH 664 auto-wrap big round baler, always shedded; #273 NH twine tie square baler; 488 NH haybine; NH side delivery rake; 10' AC finishing disc; plows; Bush Hog #287 3 pt. 7' like new rotary mower and more.

**STOCK TRAILER**  
Very good, very clean Titan

CHARLENE (MRS. LARRY E.) LEE

See [www.martyreadauction.com](http://www.martyreadauction.com)

MARTY READ AUCTION SERVICE

Marty & Beverly Read  
Mound City, KS • 913-795-2508

"See following editions of the paper or go to the website for full ads"

[www.martyreadauction.com](http://www.martyreadauction.com)

## AUCTION

FRIDAY, MARCH 28 — 6:00 PM

SATURDAY, MARCH 29 — 10:00 AM

Knights of Columbus Club, 2206 East 23rd Street  
LAWRENCE, KANSAS 66046

Sale Bill is a brief list, we're still unpacking items from one estate. Plan to attend!!

See Complete Sale Bill, Coin List and Photos at [www.dandlauctions.com](http://www.dandlauctions.com)

FRIDAY, MARCH 28, 6:00 PM

200+ Lots of Coins: Morgan and Peace Dollars, 1894, 1895S, UNC and some MS-63 Slabbed Coins; Bust, Seated Liberty and Walking Liberty Halves; PCGS 1/2 Reale Shipwreck Treasure Silver w/COA; Large Cents; Indian

Head and Wheat Cents; Silver Washington Quarters; Barber, Buffalo and Jefferson Nickels; Several Coin Books; Silver Certificates; Foreign Coins and Currency; Mint and Proof Sets; Commemoratives; and Many Supplies.

SATURDAY, MARCH 29, 10:00 AM

**COLLECTIBLES & GLASSWARE**  
CI Bus, Motorcycle and Train; Gibbs "Pacing Joe" Horse w/Cart; Tin Car; CI Banks - Mary and Lamb, "Teddy" Bear; Lion, Elephant, Horse, Mosque, Clock, Japanese Safe, and Others; Tom Corbett Space Cadet Field Glasses; Ray Gun; Lone Ranger Lunch Box; Numerous 1950's Toy Cars and Trucks, incl. Nylint, Tonka, Structo, Buddy L, Tootsie, Hot Wheels, Sun Rubber, etc.; Diecast Cars; Baseball Cards; Signed Baseballs, George Brett and Nolan Ryan; Dolls, incl. 25+ Barbie NIB; Child's Sad Irons and Dishes; Child's Books; Games.

**25 Autographed Celebrity Photos w/ COA**

**TOYS, BANKS & DOLLS**  
CI Arcade International Harvester Truck, McCormick-Deering Tractor and Thresher;

Terms and Conditions: Positive ID required to register. Payment by cash or good check. Statements made the day of the auction take precedence over all printed or written material. All items sold "as is," "where is". Not responsible for accidents or loss. Kansas Sale tax collected, unless tax exemption certificate is provided. Concessions Available

D & L Auctions, Lawrence, KS  
785-749-1513 or 785-766-5630

Auctioneers: Doug Riat and Lynn Langvardt

Continued from page 10

It was late October, 2006, when I wrote the introductory paragraphs. Two friends and I had embarked on a week-long tour through northern New Mexico and southern Colorado, ostensibly to follow a trail of Anasazi ruins centered around Chaco Canyon. That I ended up chasing ghosts from my past wasn't a surprise, given the terrain, but the emotional upheaval left me drained and, what's worse, compromised my love for our adopted state.

In the ensuing kerfuffle I came to realize that the notion of home or a home-ground must, in some cases — my case — remain fluid. "Home is where the heart is" goes the adage but the heart is as uncontrollable as the weather. I wrestled with these feelings until I came to an uneasy truce, and so it went until a book arrived in the mail last week. Five minutes into "Home Ground, Language for an American Land-

scape," edited by Barry Lopez, and I was once more grounded in place.

Most of the contributors defined their home grounds in the singular, and specific, such as Patiann Rogers, who listed "a mile east of Wildcat Point, the site of Kit Carson's last campfire, Colorado." Others used broader vistas, as Antonya Nelson with her "Route 66," and Terry Tempest Williams and her "Colorado Plateau," and in so doing revealed a duality mirroring my own. It was a vindication I desperately needed. I was not alone.

As always when faced with such matters, I found myself outside, studying the hills, the woods, the fields. How would I list my home-ground? Plural, as in the Southwest, the Rockies, and, yes, the tallgrass prairies of northeast Kansas. There is no one geography of home, no need for sacrifice or betrayal. Our hearts know this, even if sometimes we lose our way.

# Be prepared is key to business success

The Boy Scout motto "Be Prepared" may be important to remember for people thinking about starting a business.

Glenn Muske, Oklahoma State University Cooperative Extension Service interim director, family and consumer sciences, said if you are thinking about starting a business keep in mind entrepreneurs succeed because of preparation and hard work.

"There is a lot of time commitment involved with starting and owning your own business," Muske said. "An employee stands to lose a job, but business owners stand to lose their life savings. This is one of the key reasons why it is so important to plan well and be prepared for any situation before taking that big step."

Muske suggests defining personal goals, taking a course in business management, preparing a detailed business plan, completing a loan application and test marketing your idea before jumping off into the business world.

Think about what you want to accomplish professionally and personally.

"Looking at long-term reasons for starting a business are important," he said. "Take a look at your life and work based on a 10-year span. During the first 5 years of operation, a business is considered a start-up and a business begins to mature after the five-year mark."

Muske said with proper preparation entrepreneurs will help protect investment both in time and money.

After going through the steps, entrepreneurs may find adjustments are needed, the idea is not valid or there is not a market after all.


"Remember, if you want to start a business, make well-informed decisions

based on fact and preparation," Muske said. "Your results may show a change in

business idea or you may decide against it altogether."

## The Calf Catcher

- ✓ One person can safely catch, treat, weigh and transport baby calves
- ✓ Protection from aggressive cows.
- ✓ Built rugged for rough terrain
- ✓ Customized complete Weighing System w/sling available



New Tec Inc.  
Local Dealer:  
**TINA HARTUNG, Hutchinson, KS**  
**620-727-4432**  
[www.calfid.com](http://www.calfid.com)

Stop by our Booth J26 at the Mid America Farm Expo  
March 25, 26 & 27 • Salina, Kansas

## 158 ACRES LYON CO. REAL ESTATE AUCTION



TUESDAY, APRIL 8 — 7:00 PM

Morris County 4-H Building, 612 US Hwy. 56 — COUNCIL GROVE, KS

DIRECTIONS: 1 mile East of Council Grove on US Hwy. 56. WATCH FOR SIGNS.

**PROPERTY LOCATION:** From the intersection of Hwy. 99 and Hwy 56, just North of Admire, go 5 miles North on Hwy 99 to 390 Rd. West on 390 Rd. approximately 1 1/2 miles to the south end of the property. Watch for signs.

**DESCRIPTION:** 158 more or less acres of native grass pasture. Well maintained clean grass with a large pond located in the center of the property. Creek on the North end that runs mostly year round and a small creek on the South end makes for good water distribution. Good access, new fence on the North end, rest of the fence is average. Available for the 2008 grazing season.

**LEGAL DESCRIPTION:** E 1/2 SW 1/4 and E 1/2 NW 1/4 Sec. 19-15-12 Lyon County Kansas.

**TERMS & CONDITIONS:** 10% down payment the day of the auction. Balance due when merchantable title and warranty deed are delivered. Closing and possession on or before May 1, 2008. Property sells in AS-IS condition. Sale is not contingent on the buyer obtaining financing. Acreage amount is based on FSA measurements and are deemed reliable, but are not guaranteed, 2008 taxes will be the buyers responsibility. Broker and auctioneers are representing the seller. For information contact Greg Hallgren Broker/Auctioneer at 785-499-2897.

For pictures and maps go to:  
[www.hallgrenauctions.com](http://www.hallgrenauctions.com)

BRECKENRIDGE HOLDING COMPANY

**NAA** Auctioneer  
Terms: Cash or Good Check. Not Responsible for Accidents. Statements made day of auction take precedence over written materials.

**HALLGREN REAL ESTATE & AUCTIONS, LLC**

ALTA VISTA, KANSAS • 785-499-5376

GREG HALLGREN  
785-499-2897

JAY E. BROWN  
785-482-3596

e-mail: [ghallgren@live.com](mailto:ghallgren@live.com)

[www.hallgrenauctions.com](http://www.hallgrenauctions.com) • [KSALink.com](http://KSALink.com)

## GoBob PIPE & STEEL SALES LLC HAY CONSERVER FEEDERS Save Money!

What would you say about a hay feeder that **GUARANTEES** you will feed 25-50% less hay, or your money back? What if you knew over 4000 of these feeders had been sold and **NO ONE** had asked for a refund? Some customers have reported they are feeding **HALF** the hay they were before they started using the original *Hay Conserver* feeder!

GoBob, and GoBob **ONLY**, sells this feeder -- the original *Hay Conserver* feeder. Don't be fooled by imitators and *Johnnie-come-latelys!*

John Rummel of Ash Grove, MO stopped by our booth at Farmfest in October and had this to say: "I bought several of your hay feeders a little over 2 years ago and they **FLAT DO NOT WASTE HAY!** I have also looked at all the other so-called hay saving feeder copy-cats at the show and **THERE IS NO COMPARISON. YOUR FEEDERS ARE THE BEST!**"

You can buy the original, guaranteed *Hay Conserver* feeders, **ONLY** from GoBob!



**RED RHINO**  
The BEST hay trailer built! PERIOD.



PIPE & STEEL CROWDING TUBS SUPER BUNKS

CONTINUOUS FENCE AJUSTABLE ALLEY FLATBED TRAILERS

**1 877 851 2365**  
[www.gobobpipe.com](http://www.gobobpipe.com)

## Power Pellets Kill Cedar And Yucca!



And Other Unwanted Trees And Brush In Pastures.

- No Hassle, apply by hand, no mixing, spraying, spilling, drift or clean up
- Low cost, only pennies per plant • Complete control with little or no regrowth
- No special applicator license required.

Available at Your Local Ag-Chemical Supplier

Manufactured By: **Pro-Serve, Inc.**  
400 E. Brooks Rd. • Memphis, TN 38109

Call Toll Free 877-776-7375 • [www.pro-serveinc.com](http://www.pro-serveinc.com)

## 8th Annual Showpig Sale

Valleybrook Farm

Saturday, April 12, 2 PM  
at the farm

We will be selling 75-85 of our top pigs out of these sires:  
• Full Circle • JJ Pride • Horsepower  
• Double Shot • Legacy  
• Accolade • 21-2 • Cheetah  
• Next Step • B&B



**J-Mac II**  
Sired by J-Mac x Roc On. Thanks to Top Out Showpig Sires, Ohio, for their purchase of this great boar privately at the Fall Classic. Mother of this boar has two grandsons in boar studs at Top Out and Hi Point Genetics, Ill. Her litter will be due Feb. 1 by Horsepower.



**Grand Champion Overall, 2007 Dr. Bob Hines Swine Classic**  
(Tim Piece x Horsepower)  
Shown by Bailey Clanton.



**Champion Hampshire, 2007 Kansas State Fair**  
Shown by Cole Clanton.



**Eighth-place Hampshire gilt, 2007 NSR Fall Classic**  
Bred by Couch & Curry, Texas. Her littermate was purchased by Jerry Owen, Texas.

Yorkshires • Durocs  
• Hampshires • Spots  
• Crossbreds

Congratulations to the winners shown below and to all of our other winners last year. Thank you to all of the FFA and 4-H members who have supported our program.



**(Symmetry x All In One)**  
Third in class behind the grand and reserve grand champion Yorkshire gilts, 2007 NISS. Shown by Bailey Pope. Thanks to Bailey for doing a great job. The mother of the gilt is due for a late-January litter by Horsepower.



**1st Class 2 gilt, 2007 WPX**  
(Symmetry x All In One) thanks to Sargant Valley Farms, Ill, for your purchase of this great gilt.

REPORTED 2007 WINNINGS:

- Grand Champion Overall, Dr. Bob Hines Swine Classic
- Champion Duroc Gilt, Dr. Bob Hines Swine Classic
- Class-winning crossbred gilt, Dr. Bob Hines Swine Classic
- Champion and Reserve Champion Dark Crossbred Gilts and Champion Dark Crossbred Barrow, Cimarron Strip Pig Sale
- Grand Champion, Osage City, Kan.
- Grand Champion, Chase County, Kan.
- Grand and Reserve Grand Champion, Osage County, Kan.
- Grand Champion, Johnson County, Kan.
- Reserve Grand Champion Barrow, Wayne County, Iowa
- Reserve Grand Champion, Douglas County, Kan.
- Fourth Overall and High Points Duroc, Eastern Kansas Swine Series
- Champion Hampshire Market Hog, Kansas State Fair
- Champion Hampshire Breeding Gilt, Kansas State Fair
- Second, third, fourth and (2) fifth-place market hogs, American Royal
- Fourth-place Yorkshire, NWSS
- Fourth-place Yorkshire, Arizona National

Congratulations, Cole Clanton, on your Champion Duroc Market Hog at the 2008 National Western Stock Show.

## Valleybrook Farm

Mike, Debra, Brian, Kim & Leah Bond  
20300 S. Paulen Rd., Overbrook, KS 66524  
785-453-2261 • 785-691-6539 Cell  
Email: [mikebond2004@yahoo.com](mailto:mikebond2004@yahoo.com)  
[www.thepigpage.com](http://www.thepigpage.com)

We are a Sunglo Dealer. Contact us for Sunglo Products!

Auctioneer: Jason Flory, 785-979-2183  
Pigs are available for viewing before the sale. Call for an appointment. November and December pigs for sale now privately.

If you cannot attend the sale, please call us and we can make other arrangements to meet your needs.

Directions: Four miles south of Overbrook to 189th St. Take a right, go 2 miles west to S. Paulen Rd. Take a left, go 1.75 miles South.



Hey Neighbor

## For The Love Of Horses

By Frank J. Buchman

### Low-Stress Handling Of Livestock Emphasized During EquiFest 'First Saddling' Demonstration

Humane treatment of livestock is more essential than ever.

While he was working with a horse, Curt Pate emphasized that whatever livestock is being handled must be managed with the lowest stress methods possible.

Before going into the pavilion for his first presentation at the recent EquiFest of Kansas in Wichita, Pate said, "I have been conducting an increasing number of low-

stress livestock handling seminars around the country.

"All of the recent news about cattle diseases and slaughter has brought livestock abuse to the attention of media and consumers. We must improve our management techniques," he demanded.

The point was recognized periodically throughout his hour-long session while introducing a filly to her first saddling. Mike Mikos, Eskridge Quarter

Horse breeder, brought his two-year-old palomino into the portable round pen set up in the pavilion for Pate to present the training demonstration.

"The reason I do these clinics is for the horses," acknowledged Pate of Helena, Mont. With a lifetime of livestock experience, Pate, making a repeat appearance at the EquiFest, is in demand throughout the United States and Europe for his advice. He was a technical advisor for the

acclaimed Horse Whisperer movie.

Unlike some clinicians who start riding their colt during the first session, Pate conducted his colt starting seminar in three one-hour segments progressing from Friday's saddling through riding the filly on Sunday.

Broke to lead, the filly was worked extensively with the halter and lead. "I have changed my techniques from the way I used to start these colts and the way others often still do it," Pate evaluated. "I have my hands on her, and I will continue to work to get her to relax, respect me and respond to my requests."

While the filly was continually pushing and rub-

bing, Pate did not reprimand her. "I've learned to let these things work themselves out. She'll decide that it's not necessary and no fun really," he insisted. The filly was never trotted or loped around the pen.

Although he would immediately jump on a colt when he was training as a teenager, Pate noted, "As my years have increased, I try to use my mind more instead of my body."

The filly was perspiring and tense from the exposure to the crowd and new environment. "It will take her a while to get used to all of these strange things. Right now, she's worried that the boogey man might get her. She's not really paying attention to what

I'm asking her to do," Pate recognized.

Although groundwork is required before saddling and riding a young horse, there can be too much of that, Pate explained, contrasting opinions of some clinicians.

"A colt can become too relaxed and passive. Then when you are on their back and want them to move, they'll tend to resist or sulk up," he explained. "The horse must move, yet not buck, rear up, lie down or back up, such that they can hurt you or even themselves. It takes a balance of the whole deal."

Gradually, the filly started respecting Pate, moving

*Continued on page 13*

## HESS & SONS SALVAGE, INC.

1209 N. PERRY, JUNCTION CITY, KANSAS

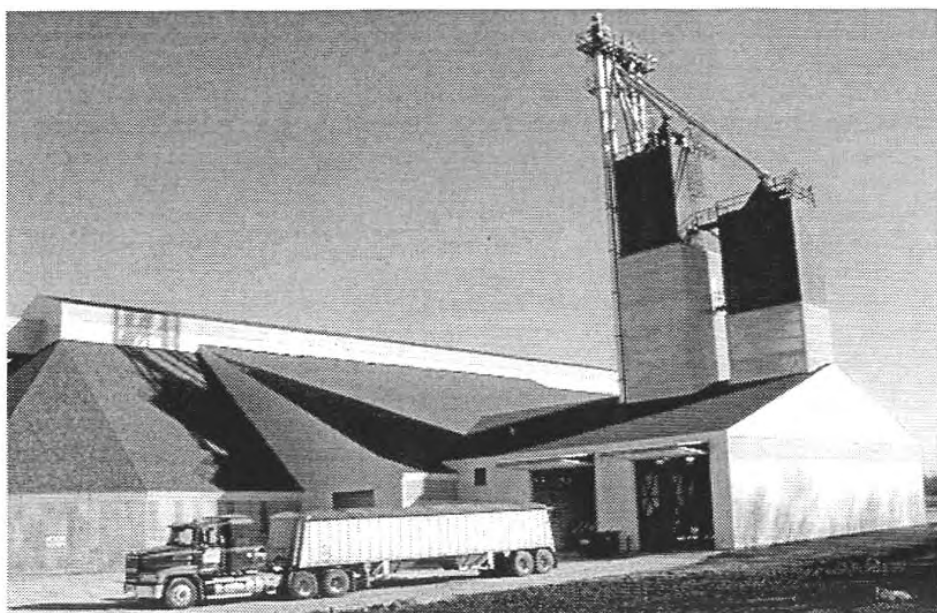
**\*STILL THE BEST PRICES AROUND\***

- |  |  |
|--|--|
| ★ PREPARED #2 IRON:<br>\$195.00 Net Ton Delivered      | ★ #1 CLEAN COPPER: \$3.00 per lb.                          |
| ★ PREPARED MACHINE CAST:<br>\$250.00 Net Ton Delivered | ★ PREPARED NON-MAGNETIC<br>STAINLESS STEEL: \$1.00 per lb. |
| ★ MIXED FARM MACHINERY:<br>\$140.00 Net Ton Delivered  | ★ BATTERIES: \$0.17 per lb.                                |
| ★ OLD CARS: \$120.00 Per Ton,<br>w-Title, Delivered    | ★ ELECTRIC MOTORS: \$0.25 per lb.                          |
|  | ★ AIR CONDITIONER<br>SEALED UNITS: \$0.08 per lb.          |

ALSO BUYING: COPPER, BRASS, ALUMINUM, ALUMINUM CANS

**CALL: 800-825-4377 For Current Prices**

**ROLL-OFF CONTAINERS AVAILABLE, ASK FOR LANNY  
(PRICES SUBJECT TO CHANGE WITHOUT NOTICE!)**



## Ag producers...

*If you apply your own  
dry fertilizer....check the prices at  
Farmway Co-op today!!!*

- We can be your **complete supplier** for all your dry fertilizer input needs... Nitrogen, Phosphate, Potash, Sulphur, Zinc, Manganese and other nutrients available upon request.
- Straight or blended product for your crop production acres.
- Yes, we can apply AVAIL phosphorus Enhancer.

Call your Farmway Co-op location,  
Farmway Agronomy Fieldman  
or Frank at 785-738-9654, Beloit, KS.,  
for details and pricing



## HYDRAULIC POWERED TREE SAW

- Clear Pasture • CRP Acres
- Reclaim Overgrown Areas
- Clear Fence Rows

- ★ Clear 10" Diameter Trees with Single Cut
- ★ Multiple cuts on larger trees
- ★ Blade Has 10 Replaceable Carbide Teeth
- ★ Universal Mounting For Skid Steer Loaders

- ★ Heavy Duty Greasable Bearings
- ★ Heavy Duty Motor
- ★ Requires Minimum 17 GPM Oil Flow

Affordable For Any Size Of Landowner

## LONGFORD WELDING CO.

P.O. Box 223, 106 S. Kansas Ave., Longford, Kansas 67458

• Phone: 785-388-2555 •

**POWER  
TO THE PEOPLE.  
ELECTRIC  
POWER STEERING,  
THAT IS.**



FourTrax® Foreman®  
with Electric Power Steering  
Recommended for riders 16 years and older.

It's a revolution in the world of all-terrain vehicles. Honda's all-new Electric Power steering. Available only on the 2007 Honda FourTrax Foreman, it means lighter steering inputs. And there's also an all-new air-cooled 500-class engine. One ride and you'll be a believer. And it's at your local Honda Dealer.

## Coffey County Honda

105 South Main, New Strawn, KS 66839

1-800-279-3650



honda.com BE A RESPONSIBLE RIDER. REMEMBER, ATVs CAN BE HAZARDOUS TO OPERATE. FOR YOUR SAFETY, ALWAYS WEAR A HELMET, EYE PROTECTION AND PROTECTIVE CLOTHING, AND NEVER RIDE ON PAVED SURFACES OR PUBLIC ROADS. KEEP IN MIND THAT RIDING DOESN'T MIX WITH DRUGS OR ALCOHOL. Honda RECOMMENDS THAT ALL ATV RIDERS TAKE A TRAINING COURSE AND READ THEIR OWNER'S MANUALS THOROUGHLY. For rider training information or to sign up for a rider training course, call the ATV Safety Institute at 1-800-687-2887. FourTrax® Foreman® and Best on Earth® are registered trademarks of Honda Motor Co., Ltd. (2/07) 07-0200

## NOTICE CORRECTED DIRECTIONS REAL ESTATE & PERSONAL PROPERTY AUCTION



SATURDAY, APRIL 12 — 10:30 AM

3091 J AVENUE — HERINGTON, KS

DIRECTIONS: 8 miles North of Herington on Hwy. 77 to J Avenue.  
East on J Avenue 1 mile. WATCH FOR SIGNS.

REAL ESTATE SELLS AT 1:00

OPEN HOUSE: MARCH 26TH 5-7 PM ON TRACT 1

**TRACT 1:** Bungalow style 4 bdr. home on approx. 18 acres. Kitchen remodeled with new cabinets along with other updates. Vinyl siding, CA/CH, good roof, approx. 1800 square feet. Several out-buildings and good pens. Balance of the property is pasture. Good location approx. 8 miles from Herington and 20 miles from Junction City. This property is the auction site, 3091 J Ave.

**TRACT 2:** 80 acres more or less with 60 acres of pasture with pond. Possible building site with a well on the property and a catch pen in the SE corner. Good fence on three sides and the rest of the fence is average. Approx. 20 acres of an old stand of alfalfa on the East side. Great location 1/4 mile South of Hwy 56 on 3000 Rd., just 2 miles East of Herington. Pasture is available for the 2008 grazing season.

**LEGAL DESCRIPTION:** S1/2 NW1/4 Sec. 16-16-5 Morris County, Kansas.

**TERMS & CONDITIONS:** 10% down payment the day of the auction. Balance due when merchantable title and warranty deed are delivered. Closing and possession on or before May 15, 2008. Property sells in As-Is condition. All buyers inspections are to be done prior to the auction. This sale is not contingent on the buyer obtaining financing. All acreage amounts are based on county records and are deemed reliable, but are not guaranteed. Broker and Auctioneers are representing the Seller. For information contact Greg Hallgren Broker and Auctioneer at 785-499-2897.

MICHAEL & CAROLYN HAMM



Terms: Cash or Good Check. Not Responsible for Accidents. Statements made day of auction take precedence over written materials.

## HALLGREN

## REAL ESTATE & AUCTIONS, LLC

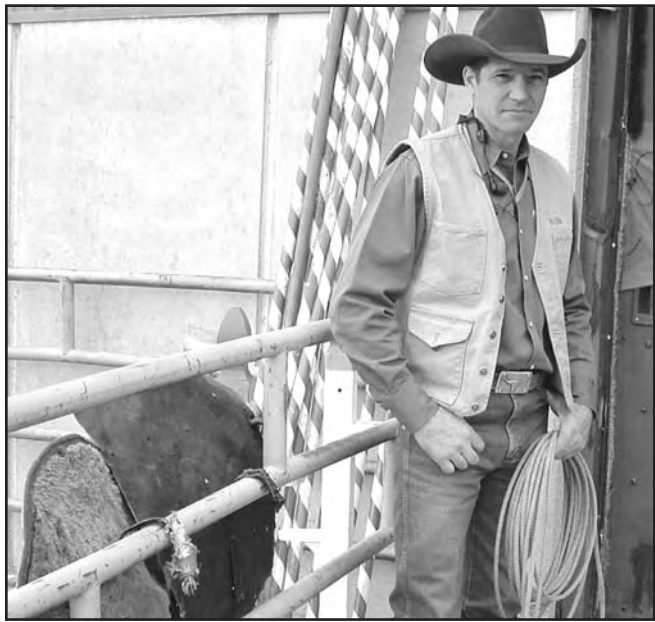
ALTA VISTA, KANSAS • 785-499-5376

GREG HALLGREN  
785-499-2897

JAY E. BROWN  
785-482-3596

e-mail: ghallgren@live.com

www.hallgrename.com • KSALink.com



Flying in from his ranch near Helena, Mont., Curt Pate is in demand around the world discussing low-stress livestock handling techniques. In his "First Saddling" session at the recent EquiFest of Kansas in Wichita, Pate continually emphasized low-stress in all work with the two-year-old palomino filly.

Continued from page 12

away from him on request and coming forward and leading on command. She was calm as the clinician rubbed her neck and back. "Now, she's starting to bend, flex her neck and soften up not to be so tense," he credited.

Working on both sides and asking her to move all four feet in different directions when requested, Pate related, "She must learn to yield both ways.

"However, I'm not too big on bending horses. It takes their mind away. Any horse performing a speed maneuver is straight, not bent. I want to control her mind, not have to do it physically," he critiqued.

Appreciating her calmness, Pate credited, "This kind of horse is good for me. She has the manners most people want and need."

Pointing out that many who work with horses use whips and abusive methods, Pate ordered, "We do not need violence when we are working with horses or any kind of livestock. There might be a place for a prod sometimes, but it must be used in the proper manner."

Stepping over the fence, Pate described how working from the opposite side of the pen allows one to safely handle a horse with poor manners. "It might save you from getting kicked, pawed or run over," he advised. "I can get up on the fence and move my hands over her back, head and neck, exposing her to movements that are similar to when I'm riding."

Bringing out his lariat, Pate rubbed the filly all over and placed it around her heart area, simulating a girth as it was tightened. At first, the filly flinched

and hopped with the pressure around her middle, but she was soon pacified and walked at ease upon command.

Opening the round pen gate, Pate lead the filly outside and started to pick up his pad and saddle when the palomino lunged to tighten the rope. "That was my fault, not hers," he quickly responded. "I was talking too much and not paying attention to my horse. We must be real careful where our mind is. The main focus should be on our horse."

Carrying the saddle and pad into the pen, Pate first rubbed the pad all over her back without alarm from the filly. Then he gently moved the saddle onto her back as she moved in a circle around him. No reprimand was made toward the filly, although she continued to move while he was adjusting the saddle and

tightening the girth.

Moving her around himself at a walk, Pate analyzed, "She probably doesn't even know she has the saddle on yet. She may still think it's the rope around her heart girth."

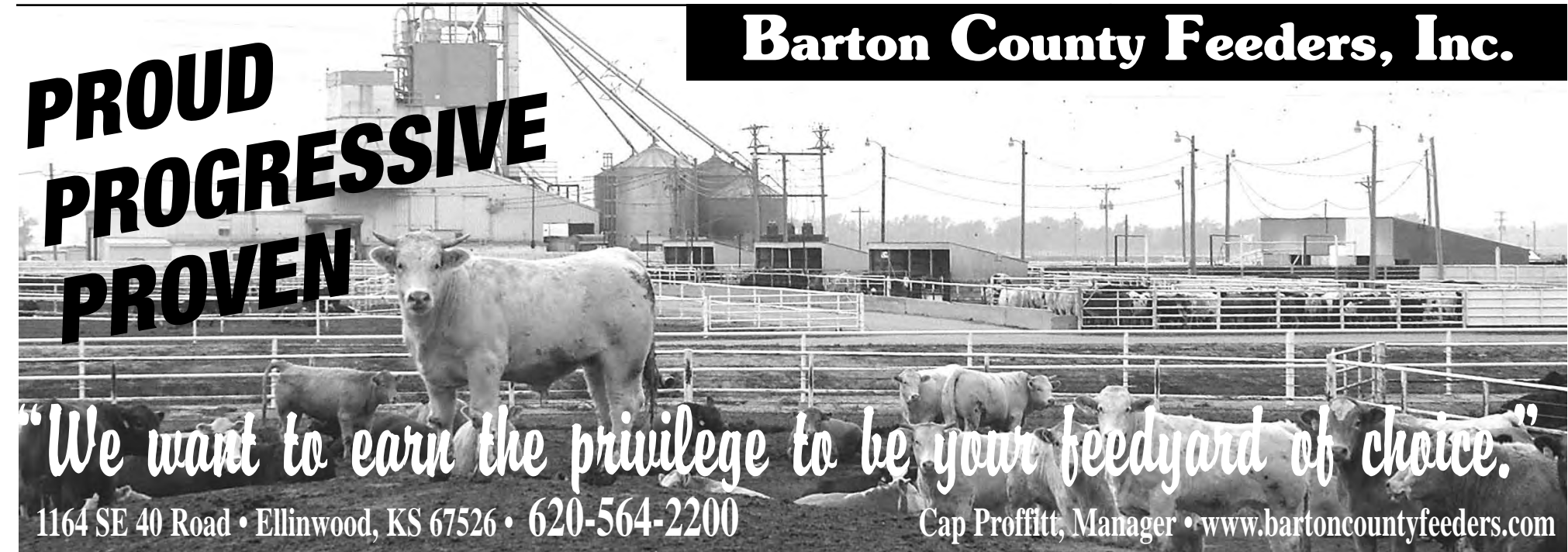
As he again expressed appreciation for the manners of the filly and her acceptance of his first steps of training, Pate complimented, "She's licking her lips in relaxation."

An experience involving rough handling of livestock had occurred just a few days earlier. "There was a truck accident near our place, and I was asked to assist with getting the cattle moved around," he recalled. "Those truckers and cattlemen there were just like the ones we have been seeing on television.

"We must control our urge for violence and fighting with livestock," Pate concluded.


# PROUD PROGRESSIVE PROVEN

## Barton County Feeders, Inc.



"We want to earn the privilege to be your feedyard of choice."

1164 SE 40 Road • Ellinwood, KS 67526 • 620-564-2200
Cap Proffitt, Manager • [www.bartoncountyfeeders.com](http://www.bartoncountyfeeders.com)




# We're listening ... that's why we're growing!

Over 160 progressively bred Angus, Red Angus and Charolais bulls available exclusively by private treaty at the ranch. These bulls are the result of producer input and the best genetics available. We accomplish this with planned matings that yield acceptable birth weights, superior growth and an easily managed blend of maternal and carcass genetics.


Fall and Spring Yearlings Sired by:

<p><b>Angus</b></p> <ul style="list-style-type: none"> <li>In Focus</li> <li>Foresight</li> <li>Solution</li> <li>Right Time 338</li> <li>Future Direction</li> <li>Harms Bright Future 3005</li> <li>Calculator</li> <li>New Design 1407</li> <li>Retail Product</li> <li>Lead On</li> </ul>	<p><b>Red Angus</b></p> <ul style="list-style-type: none"> <li>Major League</li> <li>Cherokee Canyon</li> <li>All Beef</li> <li>Cheyenne</li> <li>Vacation</li> </ul> <p><b>Charolais</b></p> <ul style="list-style-type: none"> <li>Assertion</li> <li>Gridmaker</li> <li>Easy Pro 1158</li> <li>Unlimited Ease 9108</li> </ul>
---	--

Proud to be a  
founding member of



"We are Qualified Seedstock Suppliers"



Registered  
Angus  
Red Angus  
Charolais

"Your  
Partner  
in  
Progress"

HARMS PLAINVIEW RANCH

Mark and Kim Harms

2528 250th Street  
Lincolville, KS 66858  
(620) 924-5544  
Email: [hprbulls@tctelco.net](mailto:hprbulls@tctelco.net)  
[www.HARMSRANCH.com](http://www.HARMSRANCH.com)



Oliver and Rachel Beall of Emmett consigned a well-fitted yearling horned Hereford bull to the 61st annual Northeast Kansas Hereford Association Sale at Manhattan.



Tyler Cowan of Maple Hill talked to Dana Wolford of Wildcat Herefords at Hillsboro about cattle being sold in the 61st annual Northeast Kansas Hereford Association Sale at Manhattan. Cowan is a grandson of Dean Davis from Davis Herefords at Maple Hill and assisted with presenting the Davis cattle in the auction.

**HUNTING AND CATTLE GRAZING LAND**  
 160, 240, 418 ACRE TRACTS  
 LOCATED IN THE HEART OF THE FLINT HILLS  
 Big Rolling Flint Hills, Native Bluestem Grass, Ponds, Spring Fed  
 Timbered Draws, All in Southeastern Butler County  
 Visit [www.sundgren.com](http://www.sundgren.com) for pictures and more details.  
**AUCTION THURSDAY, APRIL 3, 6:00 PM**  
 El Dorado Civic Center, 201 E. Central  
 EL DORADO, KS  
 SUNDGREN AUCTION INC.  
[www.sundgren.com](http://www.sundgren.com)  
 or [www.sundgrenauctions.com](http://www.sundgrenauctions.com)  
 JEREMY SUNDGREN                      JOE SUNDGREN  
 316-377-0013                              316-377-7112

**HYDRA BED** *The Original Flatbed Bale Handler*  
 BY TRIPLE C, INC.  
**OPTIONS:**  
 3 Spool Valve,  
 Post Hole Digger,  
 Cake Feeder,  
 Dump Box,  
 Toolboxes  
  
*Beds In Stock • On-Site Installation*  
 Grill Guards/Running Boards  
**MILLER RANCH EQUIPMENT**  
 Alma, KS    785-765-3588  
[www.MillerRanchEquipment.com](http://www.MillerRanchEquipment.com)

**YOUR TRUCK HEADQUARTERS IN THE FLINT HILLS**

<p><b>2005 Ford Ranger XLT</b></p> Stock#: T6224 Super Cab, Black, 35K, 3.0 liter 6 cyl., 5 speed manual.	<p><b>2008 Ford F-250 Super Duty</b></p> Stock#: T6296N Crew Cab 4x4, Dark Blue, 4K, 5.4 liter 8 cyl., Auto.
<p><b>2005 Ford F-250 Super Duty Crew Cab</b></p> Stock#: T6213N 4x4, Automatic w/overdrive, True Blue Metallic, 6.0 Liter 8 cyl., 85K	<p><b>2008 Ford F-450 Super Duty</b></p> Stock#: T6166N Crew Cab, Oxford White, 806 miles! 6.4 liter 8 cyl., Auto, Powerstroke Diesel.
<p><b>2004 Ford F-350 Super Duty</b></p> Stock#: T6238N Red, 47K, 6.0 Liter 8 cyl., 6 speed manual.	<p><b>2006 Ford F-250 XLT</b></p> Stock#: T6142N Super Cab, 4x4, white, 58K, 6.0 Liter 8 cyl., automatic.

**WE ARE TAKING SUPER DUTY NEW TRADES EVERY DAY. CALL US TO SEE WHAT WE HAVE!**

**John North Ford Inc.**  
 JERRY OLSON, SALES MANAGER  
 620-343-1700  
 TOLL FREE: 800-999-7415  
[JNFord.com](http://JNFord.com)  
 3002 West Highway 50, EMPORIA, KS 66801

**FARM AUCTION**  
**SATURDAY, MARCH 29 — 10:00 AM**  
**PARKER, KANSAS**  
 Due to the death of Mr. Carl Hardesty the following machinery and equipment will be offered at public auction 1 1/2 miles South of Parker, KS on Hiway 1077. Parker is located approx. 18 miles South of Paola, KS. WATCH FOR SIGNS.

**MODEL A ENGINE**  
 Attached to air compressor unit.

**HOUSEHOLD**  
 Sofa, stuffed chair and ottoman; Whirlpool high capacity washer; Baby beds; Swing & carrier; Pressure canner and more.

**TRACTORS**  
 1997 Ford New Holland 7740 SL with 1451 hrs of hay & mowing only, cab with good air & interior, has 12 X 12 synchro shift transmission, good rubber, "nice tractor", always shedded.

**PICKUP**  
 1997 Ford F-250 Heavy Duty 5.4 V8 auto 4X4, good air w/67,000 actual miles, good rubber with hydraulic removable hay stinger.

**HAY EQUIPMENT**  
 NH 488 mower conditioner always shedded; 2 metal floored 4 wheeled hay wagon; 6 big bale tandem hay wagon with trip unload and new tires; NH # 256 & 258 hay rakes; NH dolly for pulling two rakes; NH 664 big round baler with auto tie (always shedded); 3 pt. bale spear; 3 pt. bale fork.

**TILLAGE EQUIPMENT**  
 Ford model 207 12' tandem wheel disc; 3 pt. John Deere 3-14" plow; 3 pt. Lister.

**STOCK TRAILER**  
 6' X 20' gooseneck w/tandem axle, side escape, metal top & brush guard feeders.

**OTHER EQUIPMENT**  
 Homebuilt running gears for 4 wheeled wagon; 30 ft. grain elevator; Two compartment 4 wheel gravity flow wagon (250 bu).

**LAWN & GARDEN**  
 Pick, Mattox; Hand post diggers; Ensilage fork; Ariens RT 7020 rear tine garden tiller spades, potato fork and other hand tools; Stihl FS36 gas weed eater; Craftsman weed whacker (gas) and more.

**SHOP & TOOLS**  
 Several metal 6' shop lockers; Air paint guns with pot and hose; Port-a-Power; Elect. hand grinder; Drill bits; Bolts, nails; Handyman Jack; Come-a-longs; Pipe vice; Hand tools; Vices; Bolt bins; Welding helmet; Manual tire bead breaker; Air sanders; Circular saw; 2 Homelite Super XL chain saws & Super 2 Homelite; 10' metal welding table; Onan 20 amp AC 120 volt Generator; 220 twin cylinder Quincy 40 gal. horizontal air compressor; Barrel dolly and more.

**RAILROAD ITEMS**  
 Aluminum Railroad jack; Spike driver; Battery lantern.

**AUCTIONEERS NOTE:** The Hardesty's have been a part of the farming & ranching community in Parker for many years. They are known for taking good care of their land, livestock and equipment.

**TERMS & CONDITIONS:** Not responsible for accidents. Verbal statements made day of sale take precedence over written material.

**JOYCE (MRS. CARL) HARDESTY**  
 MARTY READ AUCTION SERVICE  
 Marty & Beverly Read  
 Mound City, KS • 913-795-2508  
[www.martyreadauction.com](http://www.martyreadauction.com)

**purple wave auction®**

**UPCOMING AUCTIONS**

**TUES., MAR. 25-1 P.M.**  
 Kingfisher Inn Steakhouse and Lounge  
 1725 Upland, Marion, Kan.  
 appliances, tools, electronics, furniture, glassware, household items, kitchen equipment, office supplies, real estate, restaurant equipment

**WED., MAR. 26-10 A.M.**  
 RGC Gifts  
 Internet Only Auction  
 decor and collectables

**SAT., MAR. 29-10 A.M.**  
 Wichita Farm Machinery Retirement Auction  
 7709 S. Seneca  
 Haysville, Kan.  
 automobiles, farm, lawn and garden, tools

**SAT., MAR. 29-10 A.M.**  
 Firearms Auction  
 825 Levee Drive, Manhattan, Kan.  
 handguns, ammunition, rifles, shooting, shotguns, supplies

**TUES., APRIL 1-1 P.M.**  
 Multiple Real Estate Auction  
 825 Levee Dr., Manhattan, Kan.  
 commercial real estate, residential real estate, 356 acres multi-par absolute

**LOOKING TO SELL?**  
 Purple Wave is now accepting consignments for our  
**Tues., April 15**  
 Construction and Farm Equipment auction  
 View complete catalog and terms at [purplewave.com](http://purplewave.com)

**purple wave auction®**

# GRASS & GRAIN Auction Sales Scheduled

check out the on-line schedule at [www.grassandgrain.com](http://www.grassandgrain.com)

- March 25 — Brangus & Angus bull sale at Eureka for Suhm Cattle Co.
- March 25 — Hereford & Angus bulls & females near Claflin for B&D Herefords & Beron Brothers Angus.
- March 27 — Tractors & swather, vehicles, trailers, equipment, cattle equipment, tools & misc. at Garden Plain for Willie & Patricia Dold. Auctioneers: Hillman Auctions.
- March 28 — Angus, Simmental, SimAngus, Red Angus bulls & females near Gorham for Dickison Ranch.
- March 28 — Boat, trailer, popcorn popper, tools, lawn equipment, furniture, household items & collectibles at McPherson for Larry & Vicki Pucket. Auctioneers: Triple K Auctions.
- March 28 & 29 — Coins, photos, collectibles, glassware, toys, banks, dolls, furniture, appliances & lawn & garden at Lawrence. Auctioneers: D&L Auctions.
- March 29 — Farm equipment & complete dispersal S. of Clay Center for Walter & Evelyn Mugler. Auctioneers: Mugler Auction Service.
- March 29 — Mature cow dispersal & 42nd annual bull sale at Greeley for H&M Angus Farms.
- March 29 — Tractors, trucks, LS trailers, machinery & household W. of Agenda for Ron & Cheryl Denk. Auctioneers: Novak Brothers & Gieber.
- March 29 — Farm auction W. of White City for Ronald Britt Estate. Auctioneers: Hallgren Auctions.
- March 29 — Wabaunsee Co. real estate at Council Grove for Rick & Kimberly Nichols. Auctioneers: Gannon Real Estate & Auctions.
- March 29 — Coffey Co. land & equipment at Lebo for Glenn Fellers. Auctioneers: Joe Biggs & Associates.
- March 29 — Tractors, hay equipment, coins, tools, pickup NE of Lyndon for Kevin & Pam Vaugh. Auctioneers: Beatty & Wischropp Auctions.
- March 29 — Farm machinery, trailers, ATV's, tools, equipment, livestock equipment & misc. at Chanute for Vern & Barbara Heilman. Auctioneers: Marshall Auctions.
- March 29 — Tools, household goods, collectibles at Clay Center for Dorothy (Mrs. Melvin) Woellhof. Auctioneers: Kretz, Hauserman, Bloom Auction Service.
- March 29 — Antique tractors, small stationary engines & machinery at Derby for Dave H. Linnebur Estate. Auctioneers: Chuck Korte Real Estate & Auctions.
- March 29 — Tractor, pickup, hay equipment, tillage equipment & guns at Parker for Joyce (Mrs. Carl) Hardesty Farm. Auctioneers: Marty Read Auctions.
- March 29 — Farm machinery at Lancaster for Michael "Mike" Halling Estate. Auctioneers: Hartter Auctions.
- March 29 — Skid loader, excavator, trucks, trailers, concrete & shop power tools, concrete forms & misc. at Westmoreland for Bissen Concrete. Auctioneers: Cline Realty & Auction.
- March 29 — Farm equipment at Haysville for Tyson Farm Equipment. Auctioneers: Purple Wave McBride Auctions.
- March 29 — Coins at Tonganoxie. Auctioneers: Shoemaker Auctions.
- March 30 — Annual Booster Club consignment auction at Linn. Auctioneers: Raymond Bott, Lee Holtmeier & Luke Bott.
- March 30 — Antiques, collectibles & furniture at Council Grove for Fern Volland. Auctioneers: Hallgren Real Estate & Auctions, LLC.
- March 30 — Antiques, collectibles & misc. at Salina. Auctioneers: Thummel Auctions.
- March 31 — Angus bulls & females at Salina for Don Johnson Angus.
- March 31 — Charolais bulls at Belleville for Myron Runft Charolais.
- March 31 — Truck, tractors, combine, machinery & tools at Victoria. Auctioneers: Farmland Auction & Realty.
- March 31 — Farm machinery & equipment at Luray for John & Louise Wallace. Auctioneers: Wolters Auctions.
- April 2 — Kansas Bull Test Sale at Beloit for Kansas Bull Test.
- April 2 — Farm & livestock equipment at Shallow Water for S&K Farms. Auctioneers: Berning Auctions.
- April 3 — Grassland & hunting, Wabaunsee Co. at Alma for Ray & Peggy Heine. Auctioneers: Murray Auctions & Realty.
- April 3 — Geary & Riley Co. land at Junction City for Viola M. Gfeller Trust. Auctioneers: Joe Biggs & Associates.
- April 3 — Dickinson Co. Land at Abilene for Eugene Holdsworth. Auctioneers: Ron Shivers.
- April 4 — Hebbert Charolais 26th Annual Bull Sale at Hyannis, NE.
- April 5 — Spring machinery auction at Clay Center. Auctioneers: Mugler Auction Service, LLC.
- April 5 — Farm machinery NW of Alma for Fred Meyer. Auctioneers: Steve Murray Auctions.
- April 5 — Guns, Mercury car, farm mach. & trucks at Minneapolis for Murphy Farms, Inc. (Bill). Auctioneers: Bacon Auctions.
- April 5 — Gun collection at Salina. Auctioneers: Raymond Bott, Lee Holtmeier & Luke Bott.
- April 5 — S. of Smolan for A.J. Holmquist Estate. Auctioneers: Roger A. Johnson & Sons.
- April 5 — Machinery at Gridley for Norman & Bonnie Knapp. Auctioneers: Joe Biggs & Associates.
- April 5 — Collectibles, antiques, pottery, advertising, gas, railroad & misc. at Lawrence. Auctioneers: Paxton Auction Service.
- April 5 — Tractor, mowers, trucks, carpenter & shop tools, farm items at Lyndon for Mr. & Mrs. David Yoder. Auctioneers: Beatty & Wischropp.
- April 5 — Antiques, collectibles, tools, tractors, machinery, motorcycle, collectibles, cars & parts N. of Lincoln for Adolph & Doreen Hannemann. Auctioneers: Bob Thummel Auctions.
- April 5 — Tractor, farm equipment, mowers, shop tools, guns, antiques, collectibles & misc. W. of Parker for Charlene (Mrs. Larry E.) Lee. Auctioneers: Read Auctions.
- April 5 — Lamb sale at Russell for Dickinson Ranch.
- April 5 — Tractors, hay equipment, misc. equipment, cattle equipment, vehicles at Overbrook for Randy Babbitt. Auctioneers: Gehling Auctions.
- April 5 — Consignments at Greenleaf for Sacred Heart Catholic Church. Auctioneers: Mark Uhlik Auctions.
- April 5 — Joy's Show Pig & Club Lamb sale at Nebraska City, NE for Joy Genetics.
- April 5 — Farm machinery W. of Seneca for J&R Farms. Auctioneers: Cline Realty & Auction.
- April 5, 6 & 7 — Farm & shop consignment sale at Larned. Auctioneers: Carr Auctions.
- April 6 — Show pig sale-Number 1 at Abilene for The Wuthnow Family Show Pigs. Auctioneer: Craig Heinen.
- April 6 — Antiques, furniture & household at Council Grove for Dr. L.D. Jernigan. Auctioneers: Hallgren Real Estate & Auctions, LLC.
- April 6 — Show pig sale at Leavenworth for April Valley Farms.
- April 7 — Pasture land at Miltonvale for Edwin Benfor. Auctioneers: Larry Lagasse Auction & Real Estate.
- April 8 — Lyon Co. Real Estate at Council Grove for Breckenridge Holding Co. Auctioneers: Hallgren Real Estate & Auctions, LLC.
- April 8 — Land in Flint Hills at Alma for Premier Outdoor Properties, Inc.
- April 10 — Cloud Co. land at Concordia for Gloria Fees. Auctioneers: Larry Lagasse Auction & Real Estate.
- April 10 — Angus bulls & female at Fredonia for Kimzey Angus Farm.
- April 11 — Farm equipment N. of Morrowville for the Edward Nutsch Estate. Auctioneers: Raymond Bott, Lee Holtmeier & Luke Bott.
- April 12 — Antiques, collectibles, household, trucks, farm mach. & equip. at Bennington for 2 Generations-Melvin & Darlene Reed. Auctioneers: Bacon Auctions.
- April 12 — Real Estate & household, collectibles & antiques W. of Alma for Virginia Bleske. Auctioneers: Murray Auctions & Realty.
- April 12 — Equipment & tools NW of Salina for Bob Neises. Auctioneers: Roger A. Johnson & Sons.
- April 12 — Equipment & collectibles W. of Linn for Dorothy (Mrs. Robert) Duensing. Auctioneers: Raymond Bott, Lee Holtmeier & Luke Bott.
- April 12 — Real Estate & household N. of Herington for Michael Ham. Auctioneers: Hallgren Real Estate & Auctions, LLC.
- April 12 — Industrial land & rock quarry at Topeka. Auctioneers: Simnitt Brothers Auctions.
- April 12 — Farm toys, belt buckles & misc. at Sabetha. Auctioneers: Hartter Auctions.
- April 12 — Lamb sale at Hope for Abeldt Club Lambs.
- April 12 — 8th annual show pig sale S. of Overbrook for Valleybrook Farm.
- April 12 — Tools, 4 whlr, lawn tractor, household, pickup, car & machinery at Axtell for Leonard Rottinghaus Estate. Auctioneers: Olmsted Auctions.
- April 12 — Vehicle, antiques, household, tools & misc. at Chester, NE for Leslie (Bill) Hartley Estate. Auctioneers: Novak Brothers & Gieber.
- April 12 — Farm equipment, semi trucks & trailers, tractors, crawler, combines & misc. at Mankato for Mike & Brad Ost. Auctioneers: Wolters Auctions.
- April 12 — Firearms, coins, antique tools, toys, adv. items, glassware & misc. at Abilene for Area Collectors. Auctioneers: Reynolds, Mugler & Geist Auctions.
- April 13 — Antiques, collectibles & household at Council Grove. Auctioneers: Hallgren Real Estate & Auctions.
- April 13 — Elite show pig sale at El Dorado for Duncan-Prairieiland-Flory-Schwenmer.
- April 15 — Real Estate at Norton for Edith Schick. Auctioneers: Jessup Auctions.
- April 16 — Coffey Co. land at New Strawn for Kenneth Vitt. Auctioneers: Joe Biggs & Associates.
- April 17 — Household goods & misc. at Clay Center for Lowell Werner Estate. Auctioneers: Kretz, Hauserman, Bloom Auction Service.
- April 17 — Lyon Co. land at Emporia for Ronnie & Catherine Vohs. Auctioneers: Joe Biggs & Associates.
- April 18 — Lyon Co. real estate at Emporia for Miller Brothers. Auctioneers: Joe Biggs & Associates.
- April 18 & 19 — JD tractors, equipment & toys at McPherson for Jason J. Jantz Trust. Auctioneers: Nixon Auctions.
- April 19 — Farm consignment sale at Junction City for Butch Hartman. Auctioneers: Jay Brown Auction.
- April 19 — Antiques & collectibles at Clay Center for Wilfred Abels. Auctioneers: Mugler Auctions, LLC.
- April 19 — Equipment consignment sale at Topeka. Auctioneers: Simnitt Brothers Auctions.
- April 19 — Farm equipment, vehicle, trailer, guns, shop equipment, cattle equipment & misc. at Erie for Trula Finley. Auctioneers: Larry Marshall Auctions.
- April 19 — Show pig sale at DeWitt, Neb. for Gerlach, Inc.
- April 19 — Gelbvieh & Balenser Bull sale W. of Chanute near Buffalo for Walkin M Ranch.
- April 19 — Machinery sale at Emporia for Miller Brothers. Auctioneers: Joe Biggs & Associates.
- April 20 — Goat Lamb Pig auction at Lyons. Auctioneers: Hollinger Auctions.
- April 20 — Real Estate Caravan at Topeka for Simnitt Auctions.
- April 21 — Basic Black bull sale at Marysville for Ohlde Cattle Co.
- April 24 — Antiques, household goods, furniture & misc. at Concordia for Bobbie Paulsen. Auctioneers: Larry Lagasse Auction & Real Estate.
- April 26 — Show Pig Sale-Number 2 at Abilene for The Wuthnow Family Show Pigs. Auctioneer: Craig Heinen.
- April 26 — Complete dispersal-Holsteins at Hillsboro for Rock Home Holsteins. Auctioneers: Burton Fellers Sales.
- April 27 — Antique cars, parts, shop equipment, antique toys & misc. at Holton. Auctioneers: Simnitt Brothers.
- April 28 — Farm consignment auction at Council Grove for Council Grove High School Vo Ag Dept. Auctioneers: Hallgren Real Estate & Auctions, LLC.
- May 3 — Furniture & miscellaneous at Salina for Windsor Apartments. Auctioneers: Roger A. Johnson & Sons.
- May 4 — Business liquidation auction at Topeka. Auctioneers: Simnitt Brothers Auctions.
- May 24 — Show Pig Sale-Number 3 at Abilene for The Wuthnow Family Show Pigs. Auctioneer: Craig Heinen.
- May 26 — 15th annual Memorial Day consignment auction at Lyndon. Auctioneers: Harley Gerdes Auctions.
- June 7 — 13th Annual Wilson Co. Wildflower Tour at Fredonia for Wilson Co. Conservation District & Conservation.
- June 14 — 7th annual consignment auction at Abilene for The Mid-America Pony & Miniature Ponies. Auctioneers: Don Chegwidzen & Charley Konig.
- August 2 — Consignment auction at Lyndon. Auctioneers: Harley Gerdes Auctions.
- August 23 — Leather & tack shop items, antiques & collectibles, general household at Clay Center for Paul Williams. Auctioneers: Mugler Auction, LLC.
- September 1 — 13th annual Labor Day consignment auction at Lyndon. Auctioneers: Harley Gerdes Auctions.
- September 6 — Fall machinery auction at Clay Center. Auctioneers: Mugler Auction Service, LLC.
- November 1 — Consignment auction at Lyndon. Auctioneers: Harley Gerdes Auctions.
- November 15 — Late fall machinery auction at Clay Center. Auctioneers: Mugler Auction Service, LLC.
- January 1, 2009 — 24th annual New Year's Day consignment auction at Lyndon. Auctioneers: Harley Gerdes Auctions.

## 38TH ANNUAL KINGMAN COUNTY YOUNG FARMERS CONSIGNMENT AUCTION

MONDAY, MARCH 31 — 9:00 AM

LOCATED: Kingman County Fairgrounds

KINGMAN, KANSAS

6 blocks South of US 54 and Main Street in Kingman, KS

### FARM EQUIPMENT

1963 JD 4010 tractor, diesel, 3 pt., dual hyd. w/GB 800 loader, clean; 1962 JD 3010 tractor, 3 pt., dual hyd., gas; IHC 606 utility tractor, gas, 3 pt, PS; Case 930 Wheatland tractor, diesel; JD 8350 20x8 grain drill, SD; JD 330 disc, 26"; JD 530 rd. baler, new belts, good; JD 400 rotary hoe, new spiders & bearings, 3 pt.; JD 5-14 plow semi-mount; JD CCA field cultivator; JD 1610 chisel, 27" NH3; JD DFB 16x8 grain drill; JD 12' offset disc; MF 880 on-land plow 7-18; JD 12' tandem disc; JD 16' chisel; Hardi 45' field sprayer w/500 gal. tank; JD 7' sickle mower; Crustbuster 24' springtooth; Bush Hog 12' 3-blade rotary mower; IHC 16-8 grain drill, white box; Kent 34' field cultivator w/harrow, late model; Terra King 15' rotary mower; Hesston 1014 hydro-swing swather; 5-Star post hole digger, 9" & 12"; Crustbuster 16' tandem disc, hyd. fold; co-op 2-ton fertilizer spreader; blade, 3 pt.; JD STX 38 lawn mower, 14 HP; Cub Cadet 105 lawn mower, 12 HP w/new rear tiller; Krause 24' tandem disc; White 448 plow 6x18; GB 800 front loader; shop made HD brush & grapple fork; JD 709 rotary mower, 3 pt.; Noble 54' springtooth; Case 5-16 plow; JD side-delivery rake; NH 479 pull swather conditioner; TSC 6' rear blade, 3 pt.; BMB 6' rotary mower, 3

pt.; flex harrows; alum. grill guard for 2001 Dodge truck; old hand crank seed cleaner; sausage stuffer; large wood-burning stove; JD 1610 25' chisel w/harrows; JD 235 19' single-fold tandem disc; Morris 7-bottom on-land plow; 1994 1160 Hesston swather, very good; 1990 Vermeer 605 Super J round baler, very good.

### TRUCK, VAN & TRAILERS

2000 Freightliner FLD-120 3406E, 475 HP Caterpillar 13 spd., 11-24.5 Lo Pros, 52" bunk, good rubber, nice; 1994 Ford F-250 4x4 diesel pickup, 7.3, auto w/B&W hyd. bale bed, slick; 1992 Ford F-350, 4x4, 460 motor, auto., hyd. B&W bale bed; 1988 Ford F-250 4x4, V-8, 5 spd., hydra bed; 1977 GMC 9500 Detroit, 13 spd. twin screw truck w/20' bed & hoist; 1966 Chevy 60 truck, 14' bed & hoist; 1997 Ford van, 122,000 miles; Maverick 6x20 GN stock trailer, good; 5x16 stock trailer, bumper pull.

### CATTLE EQUIPMENT & FENCING

HOB 800 bu. bulk bin; 500-gal. fiberglass tank; Mydi-Handie squeeze chute; Stockmaster bunks; rd. bale feeders; plastic & steel barrels w/lids; barrel holder; VW calf cradle; hedge line & corner posts; big rd. bale buggies; Graves; Craftsman mowers & weed eaters.

3 Trailer Loads of Farm & Shop Related Items. MANY OTHER ARTICLES TOO NUMEROUS TO MENTION.

BRING EQUIPMENT: SATURDAY, MARCH 29 & SUNDAY, MARCH 30, OR Up To Sale Time to the Kingman Country Fairgrounds.

TERMS: Cash. Lunch served. Not responsible for accidents.

**KINGMAN CO. YOUNG FARMERS, SELLERS**

GIEFER AUCTION SERVICE

Larry Giefer, Auctioneer & Real Estate Broker, Kingman, KS  
620-532-2883

[www.gieferauctionandrealstate.com](http://www.gieferauctionandrealstate.com)

# 'Farm Fair' slated April 7 in Holton as part of KAMS' 20th anniversary series

In celebration of its 20 years of working with rural Kansans, the Kansas Agricultural Mediation Services (KAMS) is hosting a series of Farm Fairs, featuring resources useful to producers and their families.

The first Farm Fair is set for April 7 from 7 to 9 p.m. in Holton, Kan., at the 4-H Building on the Jackson County Fairgrounds. The event is free and open to the public.

In keeping with KAMS' 20th anniversary, more than 20 federal, state and local organizations and agencies will have displays and representatives available to provide information and help answer questions.

As part of the fair, economist Rodney Jones, a farm management specialist with Kansas State University, will also give a 7:30 p.m. presentation on "Tools for Family Farm Transition."

Some of the agencies and organizations participating in the Farm Fair include: Kansas Weather Data Library and the Kansas Extension Disaster Education Network (KansasEDEN), Kansas Highway Patrol (transportation regulations), Department of Commerce (agri-tourism), Kansas PRIDE communities, Kansas Legal Service (legal assistance), Kansas Farm Bureau, K-State Farm Analyst Program (financial considerations), Kansas watershed specialists, Northeast Kan-

sas Community Action Program (NEK-CAP), AgrAbility (farming with disabilities), Kansas Farmers Union, Kansas Social and Rehabilitation Services, Northeast Kansas Area Agency on Aging; and the Holton Community Hospital (health checks).

"This is an opportunity for producers and their families to discover the resources available to them," said Char Henton, KAMS mediation coordinator.

Co-sponsoring the Farm Fair in Holton are the K-State Research and Extension offices in Atchison, Brown and Doniphan

counties and in the Mead-owlark Extension District (Jackson, Jefferson and Nemaha counties).

KAMS, administered by K-State Research and Extension, offers information, referral and dispute resolution services to Kansas farmers, ranchers, agricultural lenders, and U.S. Department of Agriculture agencies. More information about KAMS is available on the Web at <http://www.oznet.ksu.edu/kams/>.

Information about KAMS and/or the other Farm Fairs upcoming around the state is available by calling 1-800-321-FARM or 785-532-6958.

## JOY'S SHOW PIG & CLUB LAMB SALE

### Saturday, April 5, 2008

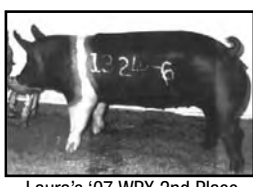
Show Pigs Start at Noon \* Club Lambs Start at 3 PM

Come Early For A Free Lunch!

Located At Animal Hospital in NEBRASKA CITY, NEBRASKA (North Business Exit on Hwy. 75)



4-H Champion Suffolk Ewe Lamb at '07 NE State Fair - Purchased At Our 2007 Sale



Laura's '07 WPX 2nd Place Class 1 Hamp Gilt. Excellent Quality Gilts & Barrows With Purebred Papers.

### OFFERING:

50 Suffolks & X-Breds Club Lambs (Includes A Set of Registered Ewe Lambs)  
150 Head Hamps, Yorks, Spots, Durocs & X-Breds & Gilts

More Information Available

### JOY GENETICS

Dunbar, Nebraska • 402-873-4406  
Kirb's Office and Sale Day, 402-873-6648

# GARY HARDY

HOLTON  
CHRYSLER Dodge Jeep

430 S. Arizona, Holton, KS • 785-364-4777  
Toll-Free

877-488-2424

Check out our website! [www.garyhardy.com](http://www.garyhardy.com)!



Dodge Caliber  
\$199/mo.\*



0% Financing on Select Vehicles for up to 72 months!



2008 Dodge Charger RT  
Leather, Loaded. **FAST!!!!**



2007 Kia Sportage **GAS SAVER!**  
Auto, 30 MPG!! \$199/Mo.\*



2008 Chevy Impala **GAS SAVER!**  
1 owner, Loaded.



2007 Jeep Patriot **GAS SAVER!**  
Auto. \$199/Mo.\*



2003 Pontiac Vibe **GAS SAVER!**  
Low Miles, Loaded, Auto!



Dodge Avengers **GAS SAVER!**  
\$199/Mo.\*



2005 Pontiac Sunfire **GAS SAVER!**  
\$199/Mo.\*



2005 Chevy 1500 **Low Miles!**  
Auto



FUEL SAVING SUV's Starting at **\$17,995**  
30 MPG!!!



2001 Toyota Highlander **GAS SAVER!**  
AUTO, AWD



2003 Honda Element **GAS SAVER!**  
AWD.



2005 Ford F-150 **4x4**  
Ext. Cab. 2 TO CHOOSE FROM!



Dodge Durango's Starting at **\$17,995**



2006 Toyota Tundra **LOADED!**  
4x4, 4-Dr., low miles, 1 owner, DARRELL WALTRIP PKG.



2005 Dodge Ram **Diessel!**  
2500 Automatic, Low miles, Local, 1 owner



2005 Dodge Sprinter **DIESEL**  
Commercial Utility Van

\*WAC, \$1,000 down + Tax & Fee

OIL CHANGE\*  
WINTER INSPECTION  
BATTERY TEST

**\$21.95**

reg. \$29.95 (with coupon)  
Offer valid through 3/31/08.  
See dealership for details.

DODGE CUMMINS  
DIESEL OIL CHANGE\*

**\$59.95**

reg. \$79.95 (with coupon)  
Offer valid through 3/31/08.  
See dealership for details.  
passenger cars/light trucks. Gas engine  
Up to 5 qt. of oil. Plus \$2 disposal fee.

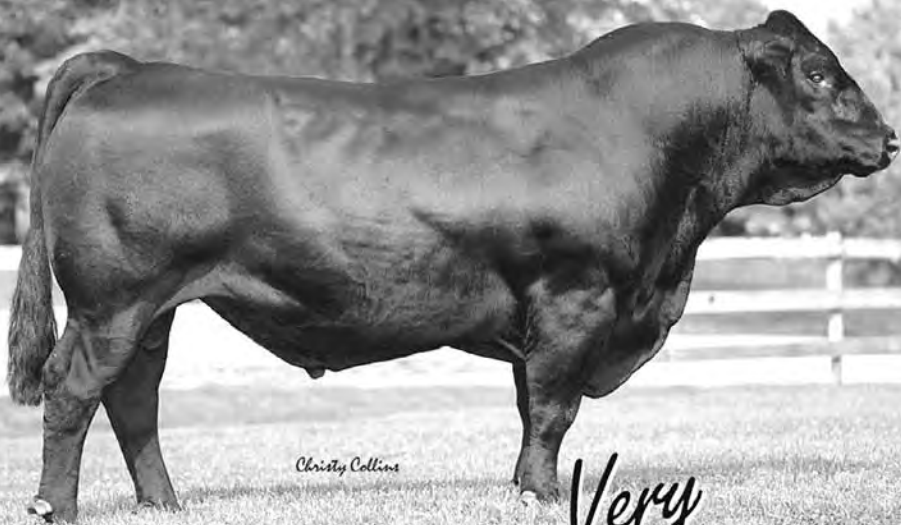
FRONT END ALIGNMENT  
INSPECTION  
& TIRE ROTATION

**\$59.95**

reg. \$99.95 (with coupon)  
Offer valid through 3/31/08.  
See dealership for details.

OPEN SATURDAYS: 8 AM-1 PM

# Simmental



Christy Collins

Very

## We've Been Busy!

### Calving Ease Program

4,000 British  
Heifers Mated  
Average Birth  
Weight 77.6 lbs.

### Carcass Program

Over 25,000  
Cows Mated  
Average 75% Choice,  
Yield Grade 2.7

### Multi-Breed Focus

1st Multi-Breed  
Genetic Evaluation  
SimAngus Solutions  
Simbrah Maternal Power

"We're committed to producing cattle that calve easily, grow fast and efficiently and have distinct end product value."

Dr. Jerry Lipsey, Executive Vice President,  
American Simmental Association



AMERICAN  
**Simmental**  
ASSOCIATION  
406-587-4531  
e-mail: [simmental@simmgene.com](mailto:simmental@simmgene.com)  
website: [www.simmental.org](http://www.simmental.org)

Request your free SimTalk subscription:  
[register@simmgene.com](mailto:register@simmgene.com) • 800-593-2778

To find a SimGenetic breeder in your area, log on to  
[www.kansas-simmental.com](http://www.kansas-simmental.com)

# KANSAS

SIMMENTAL ASSOCIATION



for your free copy of the  
KSA Breeders Directory,  
contact Nicole Marple,  
KSA Promotion & Events Coordinator,  
Ph 785-457-3927  
email: [tnmarple@yahoo.com](mailto:tnmarple@yahoo.com)