

GRASS & GRAIN

Published by AG PRESS

53rd Year

No. 51

February 19, 2008

\$1.00



Jagalene tops the list of varieties planted

By Beth Gaines-Riffel, editor

Oh Jagalene, why can't you be true. It might sound like throwback to a popular song of another era, but Kansas farmers are betting on the Jagalene variety of wheat to be a strong contender for 2008. Recently the Kansas Ag Statistics office released their annual variety report and it indicated that for 2008, Jagalene was planted on 18 percent of all the wheat acres in Kansas. It was most dominant in the western third of Kansas. In the far northwest KASS reporting districts, farmers planted it on 28 percent of all acres.

Statewide, though, the percentages between the top three varietal choices were much closer. The second most planted variety was Overlay at 17.3 percent and Jagger finishing third with 14.7 percent of the wheat acres.

Overlay was the variety of choice for growers in the south central and southeast central growing regions, topping 30 percent of all the acres in these districts.

Danby, a hard white variety, also cracked the top ten with 1.2 percent of the acres.

KASS did recognize that many growers rely on blends to take advantage of the strengths of several varieties grown together, although they were not included in the individual variety rankings. Blends, which are more widely used in the north central, northeast and central growing areas, are planted on 10.4 percent of the total wheat acreage in the state.

Of the total acres planted with a blend, Jagalene was included in 51.3 percent of blends. Overlay was represented 45.4 percent of the time.

The report also indicated that there were 9.9 million acres of wheat seeded in Kansas for the 2008 harvest — down from 10.4 million the previous year. Due to the devastating freeze, only 8.6 million acres actually were harvested last year.

A record 10.5 million acres were planted in 2003, and that year 10 million acres were harvested.

The funding for the variety report is provided by the Kansas Wheat Commission.

KANSAS Top Ten Wheat Varieties

1. Jagalene18.0
2. Overlay17.3
3. Jagger14.7
4. TAM 1117.3
5. Sante Fe5.8
6. T812.8
- 21372.8
8. TAM 1121.6
9. TAM 1101.4
10. Danby1.2

Speakers encourage grazing

By Beth Gaines-Riffel, Editor

Five years ago the chatter in the breakout sessions of the No-till On The Plains (NTOP) conference was that livestock fell under one of those "thou shall nots" of the no-till bible — right there with the moldboard plow. But that notion is changing — and rapidly. At the 2008 installment of the annual educational event that was attended by a sizable crowd — 1,200-plus — how to successfully incorporate livestock into an intensive no-till rotation was covered in a keynote address as well as four or five of the breakout sessions.

It would seem that the notion of grazing livestock on cover crops — in addition to the traditional stocks such as grain sorghum — is a workable option that does not stymie the progress being made to improve the quality of the soil — or hamper the process of incorporating more organic matter into the profile. Plus there is an added benefit of free fertilizer!

Dawn Beck, a regular kick-off speaker for NTOP told the growers gathered at the Bicentennial Center in Salina that incorporating a grazing livestock component of a no-till system was a workable option as long as it is managed appropriately.

"I don't want to see you hauling stuff off," he said. "Because you never haul it back!"

According to Beck, who is the research manager of the Dakota Lakes Research



Kirk Gadzia, a rancher from New Mexico, explained that grazing livestock can fit very well into a no-till farming system, but it must be carefully managed.

Farm in South Dakota — one of the premier locations for no-till research in the United States — there is real opportunity for no-till operations to use a cover crop to increase the intensity of the rotation and control weeds and be left with a crop for cattle to harvest before moving back to a grain crop like corn.

"High grain prices provide the opportunity for producers that are willing

and able to add gain by grazing cover crops or other perennial crops. Feedlots are a function of cheap grain and cheap fuel," Beck said.

He also noted that animals have been a part of the natural ecosystem, and should remain so in those striving for a sustainable farming system. Although, he warned that they do come with management issues.

"Problems associated

with the keeping of livestock are not the fault of the livestock. They do not control how they are managed," he said. "Livestock will make it easier to diversify the crop rotation and cycle water and nutrients properly."

Kirk Gadzia, a New Mexico rancher and consultant that practices a holistic approach to raising cattle, spoke to the notion of incorporating livestock as "naturally" as possible.

"Most farmers fight nature and nature always wins," he said.

He noted that farming is truly the creation of new wealth — taking solar energy and creating something that can be sold — grain or livestock.

He did recognize that there are many factors that cause no-till farmers concern when it comes to incorporating livestock into a system.

Time constraints, worries over soil compaction, winter feeding, added costs and facilities are all reasons that growers give for not wanting to add livestock to their businesses.

"It must be profitable, labor efficient, complement your other enterprises, improve the land and be fun," Gadzia explained.

He told the group that one of the critical elements of livestock management is having them in the right place at the right time.

He advocated the use of high-intensity grazing with long recovery periods between animal exposures.

"Planning on paper is critical," he said.

Volatile commodities market squeezing elevators

WICHITA (AP) — A volatile grain futures market that has seen record-high wheat prices at the nation's major commodity exchanges is making many grain elevators leery of forward contracting with farmers on their 2008 winter wheat crop, Kansas Agricultural Secretary Adrian Polansky said Tuesday.

Grain elevators, as well as many farmers, have been caught having to come up with large amounts of cash to cover margin calls over the last few weeks as grain prices soared, Polansky said.

"This is a challenge for the grain industry far beyond Kansas," he said. "It is certainly a national issue and one that people are struggling with as we deal with this volatile marketplace."

Polansky — who had just returned from a meeting of the National Association

of State Departments of Agriculture in Washington, D.C. — said quite a number of states have expressed the same kinds of fears about the impacts on their grain elevators.

"I have a good level of confidence our elevators are in good shape," he said. "I don't think there is any reason to be fearful, but it is a time to monitor and be aware of the challenges."

The short grain supplies that are driving the high wheat prices also have affected revenues for elevators because in times of low supplies, grain moves to market more quickly. That means elevators are losing revenue they would normally get from storing grain.

Some elevators were harder hit than others because of wheat crop losses caused by a late spring

freeze and flooding last year, Polansky said.

Typically, elevators have been willing to buy farmer's wheat for the upcoming crop before harvest, said Michael Woolverton, a grain marketing economist at Kansas State University. Elevators then usually hedge the price they contract with farmers by buying a future's contract on the commodity's exchange — a common risk-management tool.

But these are not typical times. Wheat prices have been regularly setting records at the nation's major commodity exchanges in Kansas City, Minneapolis and Chicago amid a shortage of good-quality milling wheat. Some grain elevators and speculators have been caught on the losing side of margin calls made before wheat prices skyrocketed.

"It is a scary situation out

there," Woolverton said, adding that it doesn't take much wheat for a small rural elevator to have to pay a \$500,000 margin call.

Many small-town banks are unwilling because of the credit crunch to lend money to elevators to cover those margin calls, he said.

"Farmers are saying country elevators are no longer doing forward contracts," Woolverton said. "So farmers are sitting here seeing high prices and cannot act upon it. They aren't able to sell wheat to the country elevators. So if they want to lock in the prices, they have to buy futures contracts."

But some farmers are afraid to play the futures market on their upcoming 2008 crop because they also do not want to take the risk that wheat prices may go down at harvest.

"This really has the

whole grain industry in a real quandary because they can't conduct business as usual," Woolverton said.

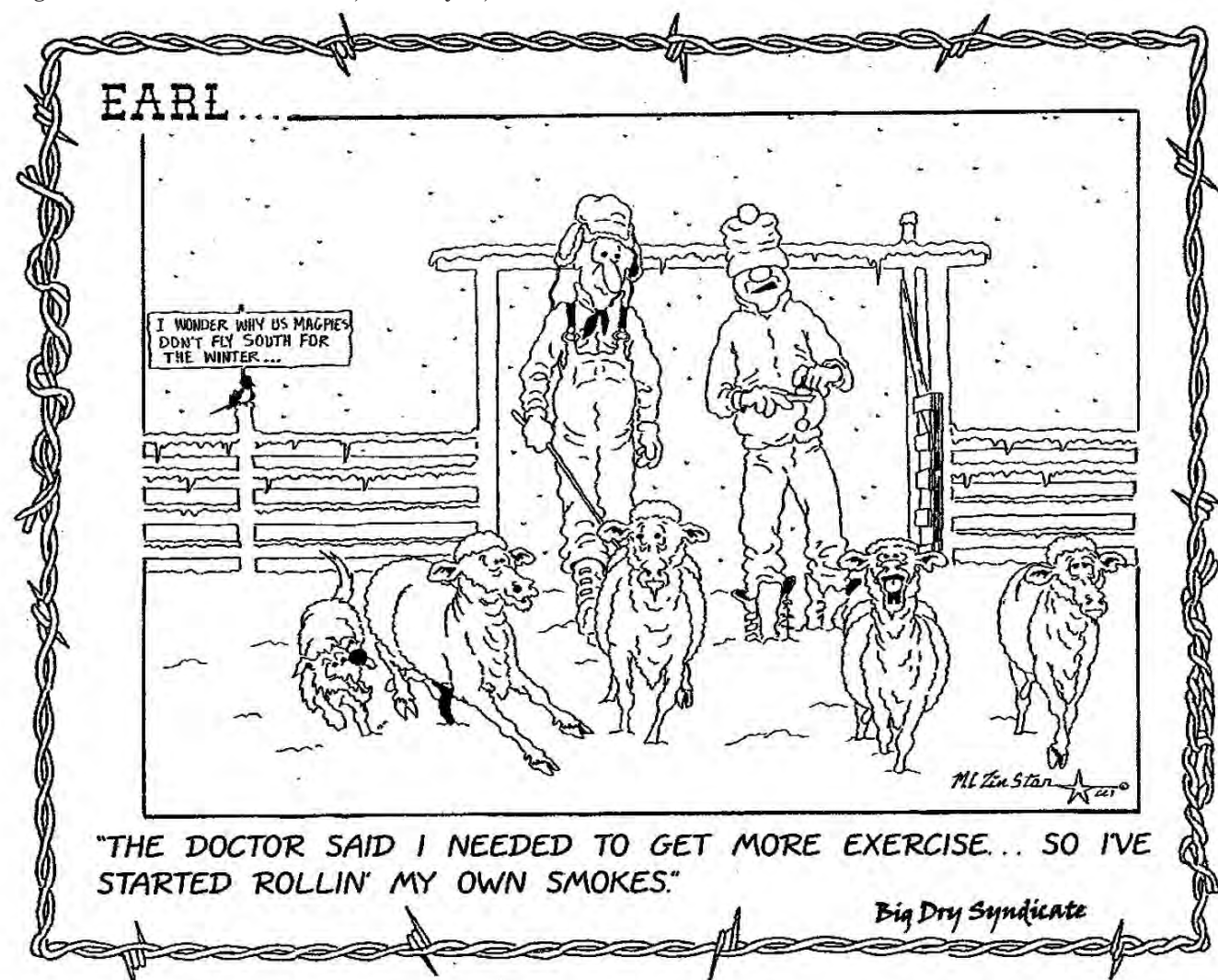
Many elevators have had to double their line of credit, said Tom Tunnell, executive director of the Kansas Grain and Feed Association, the industry trade group for the state's grain elevators.

"One thing we are seeing is a huge demand for cash with these high grain prices and high fertilizer prices," Tunnell said. "The relationship between our guys and the banks has grown considerably."

Tunnell was in western Kansas on Tuesday meeting with elevator operators.

"They are all aware of what their exposure is," Tunnell said. "Everybody I talked to just shakes their heads about the volatility. I talk to these guys before the market opens and after it

closes — they can't concentrate when the market is open."



Over the Barn Gate

By Beth Gaines-Riffel

I get an unbelievable amount of e-mail in my inbox every day. Thanks to spam filters, most of it is information that I have requested or need in some form or fashion.

One of the newsletters arrived with a piece on food sustainability and how much land is required to produce an individual's food for a year — or "foodprint" — as the writer explained.

Reading on, it showed that conventionally grown food (as opposed to organic) with some influence of meat and dairy products uses less land and left less of an impact and was more sustainable in terms of land use — primarily because of the amount of grazing lands that could be utilized by animals.

So those who claim to be vegetarians because it is kinder to Mother Earth are really quite mistaken. And I love having another issue to raise when it comes to the anti-meat rhetoric spewed by some activists.

It really was interesting reading and gave me some more "food for thought" — pun intended.

Food has been on my mind lately. Another notice in the inbox served as a reminder that early in February Farm Bureau groups around the country marked the official food checkout day — that date when the average family has earned enough money to pay for the entire year's food bill. Which, by the way, occurs far earlier than the date that notes when we've worked long enough to cover the tax bill.

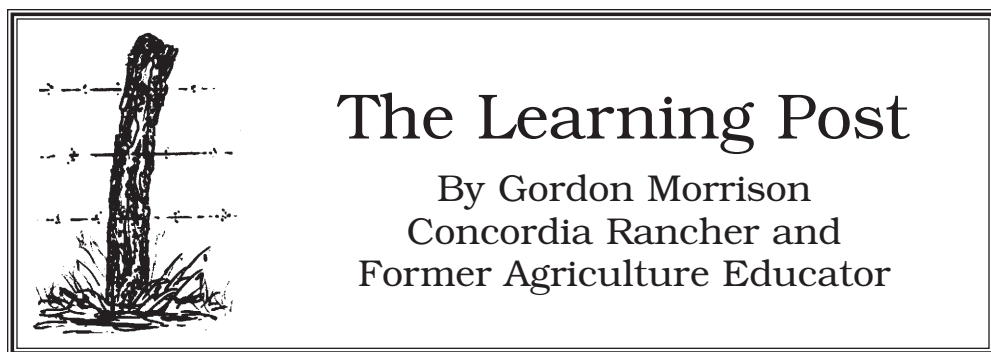
An interesting aspect of that is the differences that do exist around the globe both in terms of diet and what it costs a family to be fed for a week and what is found on the table.

Time Magazine has a photo essay posted to its website titled "What the World Eats." And through a photographer's lens, it captured families around the world with their food and drink for the week and what it cost. It was fairly insightful. Those highly developed countries that had the means to purchase and prepare (or enjoy straight from the fast-food wrapper) diets were close to our own — right down to the pizza and burgers that have become way too common in our own version of family dining.

But taking a closer look at other countries. Some less developed, some devastatingly poor — their foods were fresh and wholesome and were "basic" in nature. Rice, grains, beans and lots of vegetables filled the tables and baskets for us all to notice — and obviously the more processed the foods became, the higher the total bill. A sure sign of a culture that was prospering.

I really would encourage you to "google" the piece. It's worth taking the time to look at.

That's all for now. I'll chat with you next week, "Over the Barn Gate!"



Who Is My Valentine?

Since Valentine's Day was just a few days ago, I decided I should write my column about this special day, but I am finding it difficult to do so this year. This is my third attempt, the first two were scrubbed.

To recognize this day and even the whole month, heart-shaped boxes of candy, jewelry, and other gifts are displayed in stores, and valentine cards and decorations feature heart shapes in reds and pinks. With all these "heart" offerings made available as ways of expressing caring thoughts, it seems clear that the theme of Valentine's Day is love.

But what is love? One definition listed in the dictionary is that love is an intense affection, which is probably the meaning most often associated with valentines.

I have just read I Corinthians, Chapter 13, often referred to as the love chapter in the Bible. Even though I have read it many times and have often heard it used in wedding ceremonies, it still mystifies me. In essence, it says that if we do not manifest love, then we are nothing. We can be the greatest in many areas, have great spiritual gifts, give all we have away, surrender our bodies to be burned; yet, if we have not love, then we are nothing — we gain nothing. Then the scripture goes on to say what love is: Love is patient, kind, does not envy nor boast, is not proud, rude or self-seeking, is not easily angered, keeps no record of wrongs, does not delight in evil but rejoices in the truth. Love always protects, trusts, hopes, and perseveres.

Wow, what powerful sayings and how difficult they are to become! I believe it will take a lifetime to understand and to have that kind of love. Sometimes I feel I am making headway and then I mess up and fail a big test. I wonder if newly married couples were to read the love chapter together every day, would they

experience the wonder and power of a love so deep and true that the thought of divorce would never enter their minds, let alone be encountered?

How does one find a true valentine, where two beings are drawn toward each other like magnets? If you know someone likes you and cares for you, it is easy and natural to love them in return. They may see you looking at them across a crowded room and know you care. Isn't there a song about that? But the love referred to in I Corinthians goes beyond the love for a mate and family. The child crying with a hurt needs love. The bully who wants a friend needs this love and understanding. The friend whose mother has just died desperately needs this love. The person with whom you had a disagreement or misunderstanding; the strongly opinionated one with opposing political views, the one who slandered and poked fun at you — all need this love.

Is it possible that everyone can be our valentine? This could mean that I should walk across the street to greet someone and not wait for them to come to me; that I will be quick to speak first and search countenances for signs of stress and hurts; that I will offer support; that I will laugh with those who laugh and cry with those who cry.

I was needing to have these thoughts about love and to be challenged by them. I can see that I need to treat everyone as a valentine and especially the one whom I have chosen to be my wife, my lover, my helpmate, the one with whom I am growing old. Every day can be like Valentine's Day.

The book *Views from the Learning Post* can be ordered from Gordon Morrison, 1268 Key Road, Concordia, KS 66901 or may be available in a store near you. For information, call 785-243-3833.

**We salute
Kansas FFA
members
during
National
FFA week!**



GRASS
& GRAIN

**785-539-7558
Fax 785-539-2679**

www.grassandgrain.com

Editor — Beth J. Gaines-Riffel
gandgeditor@agpress.com

— Advertising Staff —
Steve Reichert
Peggy Giles
Frank J. Buchman
agpress2@agpress.com

**GRASS & GRAIN
(USPS 937-880)**

The newsworthy for Kansas and southern Nebraska, published each Tuesday at 1531 Yuma (Box 1009), Manhattan, KS by Ag Press, Inc. Periodicals postage paid at Manhattan, Kansas. Postmaster send address changes to: Ag Press, Box 1009, Manhattan, KS 66505.

Subscription — \$75 for 2 years. \$41 for 1 year, includes sales tax. Outside Kansas, \$48 for 1 year, \$89 for 2 years.

**MEMBER OF
Associated Press**

**Livestock Publications
Council**

**American Ag Editor's
Association**

"A person's worth is contingent upon who he is, not upon what he does, or how much he has. The worth of a person, or a thing, or an idea, is in being, not in doing, not in having."

— Alice Mary Hilton

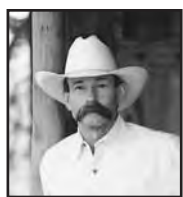
COW POKES®

By Ace Reid

<http://www.cowpokes.com>



"Wul we would advertise this ranch more, but we can't find enough dirt to job our signs in!"



BAXTER BLACK

ON THE EDGE OF COMMON SENSE

Cowboy Pampers

It is not uncommon to see real cowboys in the communities where cattle are part of the economy. I don't mean posing in the street like gunfighters in Tombstone, or passing out casino flyers on a corner in Las Vegas during rodeo week, but in the middle school parking lot picking up their kids, in the latte drive-up, or at the lumber store. One lady told of seeing two authentic-looking cowboys strolling up the aisle at Safeway. She described them as wearing 'dusty jeans, ten-gallon hats, and well-worn boots with jangling spurs.'

"What could they be buying in here?" she wondered.... "probably beer and tobacco."

Personally, my first thought was Metamucil, Prilosec, or Ben Gay. But our lady of this story made a point to follow these two cowboys through the checkout and saw them leave, 'strutting' out the door, carrying under their arms four jumbo-sized boxes of disposable diapers!

I can immediately see the misconceptions she might have had; that these two cowboys each had a toddler at home and were forced under the threat of NO SUPPER-NO CLEAN SOCKS-NO ROPING PRACTICE and ENFORCEMENT OF THE THREE-FOOT RULE unless they made the didy run!

However, for the lady's benefit I can think of many more logical reasons they were on a diaper-buying mission. For instance, Hug-

gies are quite handy as blinders on a bad horse when he won't let you swing up! OR for keeping stray mongrels from bothering your good blue heeler female when she's in season, OR placing over a bull's nose for the same reason, OR to tape on like boxing gloves around the wrists of your daughter's boyfriend before a date.

It could be that these two rustic cowboys were using the nappies for protection in some contact sport to wrap knees, elbows or feet. Maybe they were skinny, pot-bellied, hair-stickin'-up team ropers who were trying out for the sumo wrestling team? It is also

possible they lacked enough natural padding and long hours in the saddle made their seat bones sore. They could be wadding up the diapers and wearing them like their old bareback pad (for the really skinny, it takes two!)

Author's note: There are many, much more logical reasons a cowboy would be buying disposable diapers than the obvious one. As ornamentation, wild rag, hat cover, ear muffs, saddle pad, pillow, hanky, coin purse, saddle bag, bed roll, small Batman cape, blindfold, facemask, moustache protector, and handy wipe in case your horse poops on the carpet.

I, myself, use it in my lunch box to carry my soup. But not like you might think. I just saturate the pampers with chicken noodle. I can wring it out into a cup when I'm ready or just chew on it now and then as a treat.

Um um good, um um good, that's what...

Custom Designed Buildings

Strong Construction Insured Crews
1-800-591-5898
AstroBuildings.com

Starting at \$17,779
36' x 60' x 14'

Call for a Free Quote Today!

Starting at \$31,219
54' x 80' x 16'

Acreage Agriculture Equestrian Commercial

*Price includes delivery, erection & sales tax. Prices valid through April 30, 2008. Freight & crew travel, if required, not included. Upgrades & options available for additional charge. Buildings pictured may differ slightly in size, any optional features not included in special prices.

Conversations can improve relationships

Turning a deaf ear on would-be, could-be conversations can shortchange personal and professional relationships, a Kansas State University family specialist said.

"Think of a comment or a question as an invitation — and an opportunity," said Charlotte Shoup Olsen, K-State Research and Extension family systems specialist. Here's an example: A co-worker offers a cheery "good morning" and draws a positive response about an upcoming project.

The early morning conversation is one that can encourage interaction and dialog that will support a pleasant, productive work relationship, Olsen said.

A failure to respond or gruff "that's not the way I see it!" does little to encourage conversation or positive working relationships, said Olsen, who offered tips for adding value to interpersonal communications:

Take the time to listen.

If you missed a comment or question,

apologize and ask the other person to repeat it.

Respond as positively as possible and with interest, an appreciative comment or humor, if appropriate, to invite further dialog.

Keep it simple. A short response can be enough to let others know that you value the relationship. Repeated failures to respond will, however, send the message that you don't value a relationship.

Tone matters. A hostile comment — a zinger, for example — can fuel hostility.

Respect boundaries — personal information is personal.

Positive interaction almost always adds value to interpersonal relationships — and to each day, as well, Olsen said.

More information on using communication to build personal and professional relationships is available at local and district K-State Research and Extension offices.

AUCTION

SATURDAY, FEBRUARY 23 — 10:00 AM

Auction will be held in Kenwood Hall at the Saline Co. Fairgrounds in **SALINA, KANSAS**

ANTIQUES & COLLECTIBLES

Oak curved glass china cabinet; maple claw foot vanity; 48" round oak table; 20's end table; Philco floor radio; ornate gas fireplace insert stoves, mantel clock; metal wall stage coach; Aladdin lamp; Hopalong Cassidy standup, pictures; Fenton basket; 125 pcs. Jewel T Autumn Leaf; Aladdin tea pot; 50 head vases; bird collection; Fiesta cups & saucers; set

Scheffeld china; collector

plates, several carousel horses; assortment miniature carousel horses; Western collector magazines; beer can collection; McCormick tractor; foldup wing airplane; tin airplane; Indian head pennies, Lincoln cents, V & buffalo nickels, Barber & Mercury dimes, Barber quarters, 1893 Columbian Expo, halves, 10 silver dollars, mint & proof sets;

20 lots gem stones; 22 rifle; assortment of collectibles.

MODERN FURNITURE & OTHER

Whirlpool 15 cu. refrigerator; 20 cu. upright freezer; 60's china cabinet; blue recliner; assortment of sewing supplies & material; assortment videos; Craftsman 20" lawn mower; Craftsman gas weed eater; yard tools; assortment hand tools.

See last week's Grass & Grain for complete listings.

NOTE: We have combined Lee's & another collection to make a very nice auction. There are several carousel horse items & Hoppy items, along with the other glass & collectibles.

LEE BUEHRLE

Auction Conducted By
THUMMEL AUCTION
Beloit, Kansas • 785-738-5933

AUCTION

MONDAY, FEBRUARY 25 — 10:30 AM

We have quit farming and will sell the following items at public auction at the farm located 4 miles North (3 miles North of Depot Market on #36 Highway) and 1/4 mile West of Courtland, Ks. on: (Check pictures on web site).

NOTE: Be on time, not many tools & small items, 2 trailer loads of parts & misc., good usable machinery. Loader available day of sale. Will be on machinery by 12 noon or before.



TRACTORS

1996 Case IHC #7240 Magnum front wheel assist, dsl. tractor, axle mt. duals, 3 pt., cab w/heat & air; front wts., 4 hyd., 18 spd. trans., 18-4-42 tires, 6600 hrs. (nice tractor); 3 pt. quik attach hitch w/hyd. cylinder, sells separate; **1980 Case IHC 5288 dsl.** tractor, cab w/heat & air, 18-4-42 axle mt. duals, front wts., 3 hyd., 3 pt., 8022 hours, (solid tractor); **1969 John Deere 4020 dsl.** tractor, 2 hyd., Syncro trans., good tires, ROPS canopy.

COMBINE, HEADS, TRUCKS
1994 John Deere 9600 dsl. combine w/duals, straw chopper, chaff spreader, 3088 hrs., Greenstar monitor, thru shop 1 harvest back, good solid machine; **2000 John Deere 925F** Flex head w/pu reel & full finger auger (head will sell separate); **John Deere #843, 8 row corn head**, low tin, oil bath; P-

Note: approx. 2 trailer loads of parts, pcs. & misc.

Terms: Cash or ck. w/proper ID: Lunch: On Grounds

SELLERS — DAN & SHIRLEY SANDELL

PH: 785-527-1067

AUCTION CONDUCTED BY LARRY LAGASSE AUCTION & REAL ESTATE

Larry Lagasse
Ph: 785-243-3270

Lance Lagasse
Ph: 785-262-1185

Joe Odette
Ph: 785-243-4416



MACHINERY

John Deere #750 no till drill, no fert., single unit; A-L #556, pto grain cart w/side hyd. fold auger & tip tops; **Krause #4950 tandem wheel disk**, 30ft., hyd. fold, good blades; **John Deere #7300**, 3 pt., 8 row planter w/monitor, insect boxes & Orthman openers; **John Deere #7100 Max-merge** 3 pt., 6 row planter

w/Hiniker no till attach & lift assist wheels; **John Deere #7100**, 3 pt., 6 row planter; **Friesen #110 Bulkseed** tender box, 110 bu. on tandem axle trlr. w/Honda eng.; irrigation ditcher; **Orthman #9300**, 6 row, 3 pt. cultivator w/8 row bar; **IHC #490**, 21ft. wheel disk, hyd. fold; **John Deere 7100**, 3 pt., 6 row plate planter w/insecticides & monitor; **Gravity Flow 180** bu. box on 4 wheel chassis; **IHC #4600**, 30ft. field cultivator, vibra shank & walking tandems; **Kewanee 12** ft. tandem wheel disk; 2-5 bottom, 3 pt. Ford plows; 15ft. "V" blade, 3 pt.; **Liliston** cultivators; **Krause 15ft.** tandem wheel disk; 3 pt., 4 row hiller; **IHC #510**, 16-8 grain drill; 2- weeders; **Krause 15** ft. tandem wheel disk; 3 pt., 4 row hiller; **Hiniker 3** pt., 6 row cultivator; **H.D. Olson built 10ft., 3 pt. rear blade**; 3 pt., 8ft. shredder; 3 pt. bale fork; irrigation ditcher; 2 anhydrous applicators; (iron) **Ford 3** pt., 5 ft. shredder; **Hale 16'x5'** bumper pull stock trailer, rough, no title; 3 pt. Quick attach; acetylene welding torch & bottles; assort. of other old machinery & iron;



Manhattan Area

GARDEN SHOW

Pottorf Hall • CiCo Park
Manhattan, Kansas

FRIDAY, FEBRUARY 22

5:30-7:30 p.m. Family Night (Activities for youth K-6 grade)

SATURDAY, FEBRUARY 23

9 a.m. - 5 p.m. Seminars - 10 am. - 4 pm.

SUNDAY, FEBRUARY 24

Noon to 4:00 p.m. Seminars - 1 p.m. - 3 p.m.

Extension Master Gardeners booth, will focus on Pruning Storm Damaged Plants. Complete list of seminars www.oznet.ksu.edu/riley

FREE ADMISSION - DOOR PRIZES

Food stand and silent auction on garden items.

SEMINARS - CLOVER ROOM

SATURDAY, FEBRUARY 23

10 a.m. Planning a Vegetable Garden

Ward Upham - K-State Research & Extension Horticulture

11 a.m. Landscape the Design

Dr. Greg Davis - K-State University, Associate Professor

Noon Needed Gardening Tools

Gregg Eyestone - Riley County Horticulture Agent, K-State Research & Extension

1 p.m. Lawn Equipment Maintenance

Joe Bruckerhoff - Riley County Extension Master Gardener

2 p.m. Blueville's Top Perennials

Melissa Deetjen - Blueville Nursery, Inc. Container Plant Manager

3 p.m. Trees Weathering the Storm

Randy James - Growing Concerns, Inc.

4 p.m. Blueville's Top Performing Shrubs

Melissa Deetjen - Blueville Nursery, Inc. Container Plant Manager

SUNDAY, FEBRUARY 24

1 p.m. Herbs for Everyone

Dr. Rhonda Janke

K-State Research & Extension, Horticulture

2 p.m. Hanging Baskets and Containers

Dr. Emily Nolting

K-State Research & Extension, Horticulture

3 p.m. Vegetable Gardening in Small Places

Colleen Hampton

Riley County Extension, Master Gardener

For more information visit www.riley.ksu.edu





Lorene Fengel, Oak Hill, Shares
Recipe With Grass & Grain Cooks

Winner Lorene Fengel, Oak Hill: “This is good for ones who like lemon and in our family we have a bunch.”
LEMON MERINGUE TARTS

- 3 egg whites
- 1/2 teaspoon cream of tartar
- 3 tablespoons sugar
- Filling:
- 3/4 cup sugar
- Sugar substitute equivalent to 1/2 cup sugar (I use Splenda)
- 3 tablespoons cornstarch
- 1 1/3 cups cold water
- 3 egg yolks, beaten
- 1/4 cup lemon juice
- 1 teaspoon grated lemon peel

For meringue, in a mixing bowl beat the egg whites and cream of tartar on medium speed until soft peaks form. Gradually add sugar; beat until stiff peaks form. Drop into eight mounds on parchment-lined baking sheets. Shape into 4-inch cups with back of spoon. Bake at 225 degrees for 55 minutes. Turn oven off and do not open door. Let dry in oven for 1 to 1 1/2 hours.

For filling, in a saucepan, combine sugar, sugar substitute and cornstarch. Gradually stir in water until smooth. Bring to a boil over medium heat; cook and stir for two minutes or until thickened. Remove from heat. Stir about half of the mixture into the egg yolks; return all to the pan, stirring constantly. Bring to a boil. Cook and stir two minutes longer. Remove from heat and stir in lemon juice and lemon peel. Cool to room temperature without stirring. Cover and refrigerate for at least one hour. Just before serving, fill shells.

Amanda Demars, Glasco: “Grandma always served this with ham and beans. It is good cold, but is best when still hot.”

GRANDMA’S FRIED
BREAD

- 1 package dry yeast
- 1 1/2 cups lukewarm water
- 1 tablespoon sugar
- 1 1/2 teaspoons salt
- 1 tablespoon melted shortening
- 4 1/2 to 5 cups flour
- Soften yeast in water. Add

sugar and let set a few minutes until raised and foamy. Add salt, shortening and half the flour. Gradually work in remaining flour. Cover and let rise until doubled. Tear off pieces the size of a large egg and form into balls. Let balls set a few minutes on floured surface. Stretch and pull dough. Fry in skillet with about 1/2-inch oil. Salt while frying and brown on both sides.

Phyllis Dorcas, Waverly:
WINTER WARMER
CASSEROLE

- 1 pound ground beef
- 1/2 cup chopped onion
- 1/2 cup chopped green pepper, optional
- 14 3/4-ounce can spaghetti rings
- 15-ounce can ranch-style beans
- 3/4 cup shredded cheddar cheese

Saute meat and vegetables until meat is cooked; Drain grease from pan. Stir in both canned foods and heat. Before serving, sprinkle with cheese.

Louetta Erwin, Emporia: “My daughter gave me this recipe. It is really good. I liked it best leftover.”

- INSIDE-OUT RAVIOLI
- 1 pound ground beef
- 1/2 cup chopped onion
- 1 clove garlic, minced
- 1 tablespoon salad oil
- 10-ounce package frozen chopped spinach
- 1 pound spaghetti sauce with mushrooms
- 8-ounce can tomato sauce
- 1/2 teaspoon salt
- Pepper to taste
- 1 cup shredded mozzarella cheese
- 10-ounce package shell macaroni
- 1/2 cup soft bread crumbs
- 2 well-beaten eggs
- 1/4 cup salad oil

Brown beef, onion and garlic in the tablespoon of oil. Cook spinach then drain and reserve liquid adding enough water to make 1 cup. Stir spinach liquid into spaghetti sauce, tomato sauce, salt and pepper. Stir this into the browned beef and simmer 15 minutes. Combine spinach with cooked macaroni, cheese, bread crumbs, eggs and oil. Spread into well greased 9-by-13-inch pan and top with

meat mixture. Bake at 325 degrees for 30 minutes. Let stand 10 minutes before serving.

Cecilia Holle, Marysville: “Wing it at home. Delicious.”
BUFFALO WINGS
2 1/2 pounds chicken wings
1/2 cup red hot cayenne pepper sauce
1/3 cup melted butter or oleo
Grill or broil wings 30 to 45 minutes or bake at 400 degrees for 1 hour, turning once. Or can deep-fry wings at 400 degrees for 12 minutes. In a bowl combine red hot pepper sauce and melted butter. Toss wings in sauce to coat. Serve with vegetable sticks, dressing and baked potato.

Kara Wiebe, Durham:
SIMPLY DELICIOUS
CROUTONS
3 to 4 slices white sandwich bread

Garlic salt
Parsley flakes
Butter-flavored cooking spray
Spray a microwave-safe dinner plate with cooking spray. Cut slices of bread into cubes (five rows both ways). An electric knife works the best. Place bread cubes in a single layer on plate. Spray bread cubes with cooking spray. Sprinkle lightly with garlic salt and parsley flakes. Microwave two and a half minutes on high. Cool and serve on tossed salads or with soup.

Mary Hedberg, Clifton: “These are our favorite muffins.”

- HEARTY OATMEAL MUFFINS
- Batter:
- 1 1/2 cups flour
- 1 cup oatmeal
- 1/2 cup packed brown sugar
- 1 tablespoon baking powder

- 1 teaspoon cinnamon
- 1/4 teaspoon salt
- 1 egg
- 1 cup milk
- 1/4 cup vegetable oil
- Topping:
- 2 tablespoons oatmeal
- 2 tablespoon sugar
- 1/4 teaspoon cinnamon

Preheat oven to 400 degrees. Line muffin pan with papers or grease. For batter, combine flour, oats, sugar, baking powder, cinnamon and salt in a large bowl. Whisk egg, milk and oil. Add to dry ingredients. Stir just until moistened (batter will be lumpy). Spoon batter into muffin cups, filling each cup 3/4 full. For topping, combine oats, sugar and cinnamon in small bowl. Sprinkle evenly over batter in muffin cups. Bake 18 to 20 minutes or until golden brown. Yields: 12 to 15 muffins.

ANTIQUE AUCTION

SUNDAY, FEBRUARY 24 — 10:00 AM

Auction will be held in Kenwood Hall at the Saline County Fairgrounds in **SALINA, KANSAS**

ANTIQUES & COLLECTIBLES

Victorian parlor chairs; several oak & walnut parlor tables; 3 china cabinets; small showcases; several small showcases; ice cream stools; primitive benches; Stimpson porcelain blue scale; new china cabinet w/beveled glass.

2 mannequins; kerosene lamps; hand painted Cherub shade w/Cherub base, late

1800's Gone with the Wind w/Cherubs; several Victorian clocks; large assortment pictures; perfume bottles; several porcelain tea sets w/roses; assortment blue glass; large assortment pattern glass; Carnival duck covered dish; fancy Limoges dresser boxes; marble & crystal candle holders.

Dresden Victorian adv. plates; Heisey sugar, spooner w/tray; Heisey dish w/tray & spoon;

1914 ink well; 40's Kellogg's red metal display; Westmoreland bulldog; head vases; several hatpins & holders; 100 pieces costume jewelry; dolls; doll buggys; doll ornate benches; doll furniture; tin dog, monkey & Snoopy banks; children's books; child's dishes; large assortment linens; assortment books; large assortment enamelware, large assortment primitives.

See last week's Grass & Grain for complete listings.

NOTE: This is a very large collection. There are many items not listed. Check our website for pictures at www.thummelauction.com

Auction Conducted By
THUMMEL AUCTION
 Beloit, Kansas • 785-738-5933

FIND WHAT YOU WANT AND NEED IN

Since 1954

GRASS & GRAIN

Published by AG PRESS

PRINT SUBSCRIPTION

- ☐ 3 Years \$101⁰⁰
- ☐ 2 Years \$75⁰⁰
- ☐ 1 Year \$41⁰⁰

The above rates are for Kansas, western Missouri, and southern Nebraska (zip codes beginning with 640 through 645 and 660 through 689).

OUTSIDE AREA

- ☐ 3 Years \$122⁰⁰
- ☐ 2 Years \$89⁰⁰
- ☐ 1 Year \$48⁰⁰

ADD ONLINE TO YOUR PRINT SUBSCRIPTION FOR \$2 A MONTH

- ☐ 1 Year \$24⁰⁰
- ☐ 2 Years \$48⁰⁰
- ☐ 3 Years \$72⁰⁰

Call Toll-Free:
877-537-3816
 or
785-539-7558

ONLINE SUBSCRIPTION

- ☐ 3 Years \$101⁰⁰
- ☐ 2 Years \$75⁰⁰
- ☐ 1 Year \$41⁰⁰

Subscribe online: grassandgrain.com

MAIL TO (please print):

Name: _____

Address: _____

GRASS & GRAIN • BOX 1009 • MANHATTAN, KS 66505

Don't Forget To Visit G&G Online!

The new Grass & Grain homepage offers free services available to all readers — print and online.

- Calendar of Events
- G&G Country weather information
- North America auction listings
- USDA Market Reports
- “Our Daily Bread” weekly recipe
- Photo of the Week
- Online classified ad placement
- Online subscription service

You can add the online version to any current print subscription for
ONLY \$24!

Go To
www.grassandgrain.com

Helen Miller, Sun City, Ariz.:

A WICKED MEATLOAF
7-ounce package stuffing mix with seasoning packet
1 egg
1/2 cup salsa
1/3 cup water
1 1/2 pounds lean ground beef

In a bowl combine stuffing mix, seasoning packet, egg, salsa and 1/3 cup water and mix well. Add ground beef to stuffing mixture and mix well. Spoon into a 9-by-5-inch loaf pan and bake at 350 degrees for 1 hour.

Sandy Hill, Eskridge:
CHICKEN CREOLE
1 pound boneless skinless chicken breasts, cut into 3/4-inch pieces
4 teaspoons canola oil, divided
1 medium onion, chopped
1 small green pepper, chopped
1 celery rib, chopped
14 1/2-ounce can diced tomatoes, undrained
1 cup reduced-sodium chicken broth
1/3 cup tomato paste
1/2 teaspoon pepper
1/2 teaspoon dried basil
1/2 teaspoon oregano
1/2 teaspoon thyme
1/2 teaspoon marjoram
2 cups hot cooked rice

In a large nonstick skillet, saute chicken in 2 teaspoons oil until no longer pink. Remove and keep warm. In the same skillet, saute the onion, green pepper and celery in remaining oil until tender. Stir in the tomatoes, broth, tomato paste and seasonings. Bring to a boil. Reduce heat; cover and simmer for 8 minutes. Return chicken to pan and heat through. Serve with rice.

A couple from Kellee Rogers, Topeka:

EGGS TO GO
6 eggs, lightly beaten
3 tablespoons butter, melted
1 1/2 cups chopped deli ham
1/2 cup dry bread crumbs
1/4 cup shredded cheddar cheese

In a bowl combine all ingredients. Fill muffin cups three-fourths full. Bake at 375 degrees for 15 to 20 minutes or until knife inserted near the center comes out clean. Serve warm. Yields 12.

CHOCOLATE PEANUT BUTTER MOUSSE
5-ounce milk chocolate candy bar, chopped
1 cup heavy whipping cream
1 cup creamy peanut butter
1/3 cup chocolate-covered peanuts, chopped

In a microwave-safe bowl combine the candy bar, cream and peanut butter. Microwave at 50% power for 2 to 3 minutes or until smooth, stirring twice. Transfer to small mixing bowl. Cover and refrigerate for 1 hour or until chilled. Beat until soft peaks form. Spoon into dessert dishes and sprinkle with chocolate-covered peanuts. Yield: 6.

The next are from Millie Conger, Tecumseh:

SCRAMBLED EGG SANDWICHES
1/3 cup chopped green pepper
1/4 cup chopped onions
3 eggs
4 egg whites
1 tablespoon water
1/4 teaspoon salt
1/4 teaspoon ground mustard
1/8 teaspoon pepper
1/3 cup frozen corn, thawed
1/4 cup real bacon bits
4 English muffins, split & toasted

In a skillet coated with cooking spray, cook green pepper and onion over medium heat until tender, about 8 minutes. In a bowl whisk the eggs, whites, water, salt, mustard and pepper. Pour into skillet. Add corn and bacon, cook and stir until the eggs are completely set. Spoon onto English muffin bottoms, replace tops. Serve immediately.

MUSTARD PRETZEL DIP
1 cup sour cream
1 cup mayonnaise
1 cup mustard
1/2 cup sugar
1/4 cup dried minced onion
1 envelope ranch salad dressing mix

1 tablespoon prepared horseradish
Sourdough pretzel nuggets

In a bowl combine the first seven ingredients. Cover and refrigerate for at least 30 minutes. Serve with pretzels.

Mary Rogers, Topeka:
SIMPLE DINNER

1 pound ground chuck
1 small onion, diced
1 teaspoon minced garlic
1/4 teaspoon salt
1 teaspoon oregano
1 tablespoon soy sauce
Hot cooked white rice

Combine ground chuck, onion, garlic and salt. Cook together on medium heat until ground meat is browned and done. Stir in oregano and soy sauce. Serve over rice. For diet watcher you can use ground turkey.

Free Weekly Recipe Available Online

Grass & Grain's website is up and running! Included as part of this site is a "Free Weekly Recipe." You need not be a subscriber to view this recipe. Just go to www.grass-sandgrain.com and at the bottom left click on Our Daily Bread Free Weekly Recipe.

Some recipes will be selected from submissions received from area cooks while others may be suggested favorites. You may also share the recipe with friends and family by clicking on the "email page" button.

This week's Free Weekly Recipe is from Sandy Hill of Eskridge and is for Mushroom 'N' Steak Stroganoff.

Discovering The Benefits Of Soy

(NAPSA) — Soy is no longer just for the meat-free crowd. Now a regular part of the Western diet, soy is served at restaurants, is the focus of many cookbooks and can be found in almost every form imaginable — from burgers to nutrition bars.

"Soy may seem like a relatively new addition to our diets, but it's actually been around for over 3,000 years," said Allegra Burton, MPH, RD. "In addition to the important nutrients it provides, soy is easy to prepare and incorporate into every diet — whether you have time for sit-down meals or are eating on the go."

Why Soy?

Soy is well known for its abundant nutritional benefits. For instance, soy is a complete protein containing all nine essential amino acids and is the only plant protein that is equivalent in essential amino acids to animal protein. According to the FDA, eating 25 grams of soy protein a day as part of a diet low in saturated fat and cholesterol may reduce the risk of heart disease.

The FDA determined that eating this amount of soy

protein in four daily servings can reduce LDL cholesterol by as much as 10 percent, which can contribute to a drop in heart disease risk. Preliminary and emerging science shows that soy may also have benefits related to prevention of other diseases and in improving bone health.

Today, there is a variety of soy products available for quick and easy meals and snacking.

Cooking And Snacking With Soy

Soy is so versatile that it can be incorporated into almost any dish. Tofu can be marinated the same way as meat and baked or grilled. Soy can also be incorporated into pasta sauce, stir-fried or crumbled into your favorite casserole recipe. Try substituting soy for ground hamburger, sausage or chicken. These days there are dozens



of ready-made products such as veggie burgers, soy hot dogs, soy cheese and soymilk that you can try with minimal effort and gain the health benefits of soy.

There are also a variety of great soy snacks such as SOYJOY® nutrition bars (with 3 grams of soy protein), soy nuts and soy chips that quickly and nutritiously stave off hunger pangs between meals.

If you're looking for healthier alternatives for yourself and your family, soy is an excellent source of nutrients and a delicious addition to any meal or snack.

For more information: www.SOYJOY.com.

ONE MORE TIME ANTIQUES in Manhattan

IS CLOSING BUSINESS ON MARCH 3

Huge sales throughout the store.

Open Monday-Saturday: 10 am-5:30 & Sunday: Noon - 5 pm

Located just South of the mall on Hwy 177 South • MANHATTAN, KANSAS 785-770-8811

Back Pain & the DRX9000™



Common Causes of Back Pain

- The discs in your spine act as shock absorbers. Herniation or "bulging" of the discs may occur due to wear and tear. This is one of the most common causes of lower back pain.
- Disc degeneration can occur when the spongy disc dries out. over time or with injury, discs may dry out, tear and put pressure on the nerves. The result is muscle tension and back pain.

"The DRX9000™ is designed to relieve pain and promote healing."

Non-Invasive. Non-Surgical.

With the DRX9000™, You Can Take Hold of Your Life Again!

- Reduce your back pain.
- Reduce your symptoms.
- Reduce your disability.
- Improve your quality of life

About the DRX9000™

- The DRX9000™ is effective in treating low back pain associated with herniated discs, bulging discs and degenerative disc disease, allowing patients to return to an active lifestyle.

Treatments on the DRX9000™

- Consists of 20 sessions over a period of six weeks.
- Each session lasts 30 minutes.
- Following each therapy session, a cold pack and/or electrical stimulation is applied to help restore muscle tone.

Now Accepting Blue Cross -Blue Shield

**Dr. Scott D. Iversen
630 Poyntz • Manhattan, KS
Call Today! 785-776-7568**

FEBRUARY “Our Daily Bread” Recipe Contest Prize Triple Cupcake Carrier



Take 27 cupcakes anywhere, and have them look like they did when they left your kitchen. Made of durable plastic, it includes 3 stacking trays that each hold 9 cupcakes.



The lid locks tight to maintain freshness, and the handle on top makes it easy to carry. Measures 12 1/2" sq. x 9 1/2"

The winner each week is selected from the recipes printed.

Send us your favorite recipe. It may be a main dish, leftover, salad, side dish, dessert, or what-have-you.

1. Check your recipe carefully to make certain all ingredients are accurate and instructions are clear.

2. Be sure your name, address and phone number are on the entry. Please include a street address with your recipe entries. A post office box number is not sufficient for prize delivery. Allow 3-4 weeks for delivery.
3. Send it to: Woman's Page Editor, Grass & Grain, Box 1009, Manhattan, KS 66505.
OR e-mail at: agpress2@agpress.com

AF FLORENCE manufacturing company



COME BUILD A NEW CAREER WITH US!

Introduction of new product lines have created more job openings. Production positions are available in all three weekday shifts with **NEW higher starting wages:**

7am – 3:30pm; 3:30pm – midnight; 10:30pm – 7:00am

We guarantee a set **40 hours per week** with terrific advancement opportunities at regular intervals. Full benefits package include holiday and vacation pay, medical, dental, 401K and more!

Apply online at www.auth-florence.com or in person at 5935 Corporate Drive (behind the airport in TecPark).
Manhattan, Kansas

Florence Manufacturing is proud to be an equal opportunity employer and drug free workplace.

A GIBRALTAR INDUSTRIES COMPANY



LOW PRICED EYEGLASSES? SEE US FIRST

CHOOSE FROM OVER 1,500 FREE FRAMES
WITH EVERY LENS PURCHASE
SELECTION INCLUDES FAMOUS DESIGNERS

\$39.95

READING OR DISTANCE INCLUDES FREE FRAME!

\$89.95

BIFOCALS ALL TYPES INCLUDES FREE FRAME! SPECIAL FREE TINT
YOU MUST BRING IN THIS COUPON. EXPIRES 4/16/2008

\$109.95

GENERIC PROGRESSIVE INCLUDES FREE FRAME! BEST VALUE AROUND

\$199.95

BRANDED PROGRESSIVE INCLUDES FREE FRAME! LENSES INCLUDE VARILUX OR KODAK



PAYLESS OPTICAL
1316 WESTLOOP • MANHATTAN
CORNER OF WESTLOOP SHOPPING CENTER

785-537-1574

ALL NORMAL 12'S INCLUDED UP TO A • OR • 4.26 DIOPTR SPHERE AND A • 2.6 DIOPTR CYLINDER. ADDS UP TO 3.00 PLASTIC LENSES ONLY. FREE FRAME INCLUDED WITH LENS PURCHASE WHEN LENSES INSERTED INTO STORE FRAME. NOT VALID WITH CUSTOMER'S OWN FRAME. SEE OUR BROCHURE OR OPTICIAN FOR DETAILS.
YOUR DR'S PRESCRIPTION WELCOME

K-State financial specialist advises splitting tax refund to save, spend

This year, taxpayers due an income tax refund will be able to authorize dividing their refund into direct deposits for up to three financial accounts.

The IRS' new form — numbered 8888 and commonly called a split refund form — makes saving simple, said Carol Young, Kansas State University Research and Extension financial management specialist.

The automatic savings tool should help consumers avoid impulse spending at tax time, she said. Dividing refund deposits between a checking, savings and investment or retirement account may, for example, allow taxpayers to catch up on bills, treat the family to a night out, build emergency savings and save for a long-term goal such as retirement.

Opting for direct deposits also typically makes the refunds available in two weeks, rather than the six or more weeks it can take to process a paper check, said Young, who encouraged taxpayers to take financial account numbers along when meeting with an income tax preparer.

The automatic savings tool is meant to encourage saving and investing, she said. For example, a taxpayer due a \$2,000 refund could direct a \$1,000 deposit to a personal savings account; \$500 to a separate emergency fund savings account, and \$500 to a checking account to pay off the last of the holiday bills that had been charged to a credit card.

Another taxpayer receiv-

ing the same amount could direct \$1,000 to a child's college savings account, \$500 to personal savings and \$500 to a mutual fund investment account.

A third taxpayer receiving the same amount (who has an emergency fund in place) could direct \$1,000 to personal savings, \$750 to an Individual Retirement Account (IRA) and \$250 to a checking account to fund a weekend getaway for the family. Paying down debt is recommended; so are build-

ing an emergency fund and personal savings, the financial management specialist said.

According to a recent survey reported by the Consumer Federation of America, Americans typically spent about \$2,000 on unexpected expenses last year, Young said. Two-thirds of the expenditures were for medical or motor vehicle expenses.

An emergency fund can eliminate the need to borrow or run up a credit card

bill, she said.

An income tax refund will seem like free money to many, but it is a signal that a taxpayer has had too much income tax withheld from his or her paycheck and is providing an interest-free loan to the government, Young said.

Taxpayers due a significant refund are advised to check with their employer's human resources department to adjust withholding to better match typical tax liability. Adjusting withholding will make more money available to the tax-

payer during the year on paydays or, if directed toward an automatic savings deposit, help to build an emergency fund and personal savings, Young said.

In recent years, the average taxpayer's refund has been around \$2000, she said. For many low- to moderate-income households, such a refund will be the largest amount of cash a taxpayer will receive during the year.

Taking the time to think about how best to use a refund to improve a personal financial outlook before spending any of the refund

is recommended, the financial management specialist said.

This year, many Extension offices in the state are promoting America Saves Week, Feb. 24-March 2 in conjunction with ongoing Kansas Saves activities.

Information about the campaign, saving and spending can be found at www.americasavesweek.org.

More information on saving, spending and stretching a paycheck is available at county and district K-State Research and Extension offices.

30th Anniversary Celebration!



PRE-ENGINEERED STRUCTURES FOR:
• Commercial • Residential • Suburban • Equine • Farm • Metal Roofing

ANNIVERSARY SPECIALS

24'x40'x9' starting at **\$8,595**
30'x50'x10' starting at **\$11,195**
42'x70'x13' starting at **\$19,195**
60'x90'x14' starting at **\$31,695**

Crew travel required over 50 miles. Local building code modifications extra. Buildings pictured are not priced in ad. Anniversary Specials are built on your level site. Price subject to change without notice.

FABRAL find out what's new at www.clearybuilding.com

CLEARY BUILDING CORP. Call today for your free informational DVD!
 GARDEN CITY, KS, (620) 271-0359
 McPHERSON, KS, (620) 245-0100
 OTTAWA, KS, (785) 242-2885
 WELLINGTON, KS, (620) 326-2626
 CORTLAND, NE, (402) 798-2111

1-800-373-5550

GoBob PIPE & STEEL SALES LLC

HAY CONSERVER FEEDERS Save Money!

What would you say about a hay feeder that **GUARANTEES** you will feed 25-50% less hay, or your money back? What if you knew over 4000 of these feeders had been sold and **NO ONE** had asked for a refund? Some customers have reported they are feeding **HALF** the hay they were before they started using the original Hay Conserver feeder!

GoBob, and GoBob **ONLY**, sells this feeder -- the original Hay Conserver feeder. Don't be fooled by imitators and *Johnnie-come-latelys*!

*John Rummel of Ash Grove, MO stopped by our booth at Farmfest in October and had this to say: "I bought several of your hay feeders a little over 2 years ago and they **FLAT DO NOT WASTE HAY!** I have also looked at all the other so-called hay saving feeder copy-cats at the show and **THERE IS NO COMPARISON. YOUR FEEDERS ARE THE BEST!**"*

You can buy the original, guaranteed Hay Conserver feeders, ONLY from GoBob!

RED RHINO
The BEST hay trailer built! PERIOD.

PIPE & STEEL **CROWDING TUBS** **SUPER BUNKS**
CONTINUOUS FENCE **ADJUSTABLE ALLEY** **FLATBED TRAILERS**

1 877 851 2365
www.gobobpipe.com

We Have a One Track Mind!

Yes, we at Sunflower Genetics have a one track mind. We are committed to produce one thing, the genetics for progressive commercial producers who are focused on efficient production of a great product that our ultimate customer, the consumer, will enjoy:

BEEF!!!

Sunflower Genetics, LLC
13th Annual Production Sale
March 1, 2008 • 1:00 p.m.
 Sale held at the ranch near Maple Hill, Kansas

Selling:

- 70 Angus, Simmental & Composite bulls
- Several groups of commercial females

T105 Purebred Simmental

T110 3/4 Simmental

7001 Angus

Knowing a planned cross-breeding program is key to realizing the benefits of heterosis, we offer Angus, Simmental and composites of the world's two most powerful breeds. Angus bred for calving ease, maternal and carcass traits along with Simmentals for the added growth, gain, and cutability and the composites blend all of the needed traits into a simple package to make crossbreeding easy. Don't buy a bull, get involved with a planned program that is on track. Let us help you design a crossbreeding program that adds to your bottom line by not only providing the genetics but customer service to help you reap the benefits of your hard work.

Let us help you get on track!

www.sunflowergenetics.com

Registered Simmental & Angus
 Steve and Mary Gleason
 12410 Blazing Star Road
 Maple Hill, Kansas 66507
 E-mail: glsunflower@juno.com
 (785) 256-6461 - home
 (785) 640-8060 - cell
 Justin Rhodes, herdsman (785) 969-7619

Private treaty sales - Registered females, embryos and flushes for sale by private treaty

Angus • Hereford • Simmental

The Legacy Sale

127 YEARS of BEEF IMPROVEMENT

KSU SOLUTION 7132
 REG#: 15789886 • DOB: 1/12/2007
 GAR Solution X GAR H141 Precision 53
 EPDs: CE1+14 BW 1-0.9 WW1+44 YW1+89
 Milk1+28 IMF1+46 REA1+69 SB+47.13
 Dam is a full sister to GAR Preeminent, and dam was second-high selling donor in Gardiner's 2006 sale, going to Vintage Angus, Modesto, CA, for \$100,000. She's now at Sterling Hunter, Bath, MI. 7132 ranks in top 1% CE, 4% BW, 20% YW, 5% IMF, 3% REA, and top 20% or better for all \$ indexes (\$W 20%, \$F 15%, \$G 5%, \$B 5%). Long sided with great rib shape, he was the heaviest weaning ET bull in 2007 at 728 lbs.

Nowhere in the U.S. can a beef producer take advantage of the genetics offered from a teaching and research facility with over a century of continuous beef improvement. The Legacy Sale represents best-practice management, leadership and genetic excellence from one of the nation's leading land grant universities. Join us March 7 for the next generation of beef cattle genetics presented by the next generation of beef industry leaders.

31st Annual Bull and Female Sale
March 7, 2008 • 3:30 p.m.
 Purebred Beef Teaching Unit, Manhattan, KS
 Sale broadcast on LiveAuctions.tv

Selling 60 Bulls and 80 Females

Females consist of:

- Open Show Heifer Prospects
- Spring-bred Registered Cows
- Fall-bred Registered Heifers & Cows
- Spring-bred Commercial Cows
- 4 Ranch-Broke AQHA 3-yr-old Horses

Kansas State University

Purebred Beef Teaching Unit • 1912 Denison Ave. • Manhattan, KS 66502
 Ryan Breiner, Herdsman • 785.565.1881 • rbreiner@ksu.edu • www.asi.ksu.edu/bullsale

To obtain a sale catalog, call 785.532.6127 or email bullsale@ksu.edu.
Check Website www.asi.ksu.edu/bullsale for updated pictures on sale lots, sale videos, and updated information.

MICHAEL WEGENER IMPLEMENT, Inc.

CONSIGNMENT AUCTION

Tuesday - FEBRUARY 26, 2008 - 9:30 AM CST

Sale Location: Cornlea, NE – Junction Hwy 81 & 91 – 5 Miles west on 91, South to Cornlea

Storm Date: Wednesday, February 27, 2008

All equipment will be mixed, be on time. NOTE: MUST BE REMOVED WITHIN 60 DAYS!

TRACTORS:

2004 CIH MX285, cf, 480x50, loaded, 1300 hrs
JD 8420, 8000 hrs
JD 7820 MFD, 7000 hrs
2 – JD 7800 PQR, 2wheel
JD 4960 MFD, duals
JD 4450 QR, 8000 hrs, 42" rubber
JD 9300 3pt, pto, 9000 hrs, rebuilt 3000/motor, 2000/transm
JD 8640
JD 2755 MFD
JD 4520 w/JD 265 loader
JD 4620
JD 4650 MFD
JD 4440
JD 4320
JD 4240 QR
JD 4230 w/ 148 loader
1968 JD 4020 PS
JD 4020
2004 CIH MXM130, MFD, 5500 hrs
2005 CIH MXU130, 4-post
2004 CIH MXU110, MFD 2300 hrs
CIH MX270 MFD
CIH 7240 MFD, duals 4100 hrs
CIH 7240 MFD, duals 8100 hrs
CIH 7250 Magnum, 7500 hrs
CIH 7130 MFD
CIH 7130 MFD, duals, wts, 6000 hrs
1995 CIH 5250 MFD, 6900 hrs
CIH D35, MFD, w/soft cab, LX350 loader & BHX 190 backhoe, 400 hrs
Case 1170 w/Dual loader
INT 560 Diesel
JD 420 Crawler
JD 60
JD 630, restored
JD A
5 – Farmall H
INT 1568
IHC Super MTA, w/Woods belly mount mower
IHC 706 gas, wf, 2pt
Ford 8N
Ford 9N
Ford Jubilee
Wagner W14
MF 275 tractor

COMBINES:

2006 JD 9760STS, loaded, 700 hrs
1991 JD 9500
JD 4420
2 – 1983 JD 6620
1980 JD 6620, 2000 hrs
JD 8820 Titan II
1991 CIH 1680, w/chopper, 3000 hrs
1989 CIH 1680, new motor
CIH 1620
1981 CIH 1460
1991 CIH 1660
CIH 1660, fire damage engine compartment
CIH 1660, Cummins engine, knocks
INT 1420
NH TR85
Gleaner L2 Hydro

LOADERS & CONSTRUCTION:

1988 Case 621 Payloader
1984 Cat 920 Payloader
2006 Bobcat 5175 w/pallet forks, 700 hrs
Bobcat 843
Gehl 4610
NH L35 skidloader w/68" bucket
JD 310D backhoe w/4x1 bucket
IHI Crawler backhoe
Bobcat 700
JD 840 w/8000 mts
JD 746 w/grapple, brush guard, 7000 mts, like new
JD 280 w/grapple, 50 series mts
3 – JD 148
3 – JD 158
JD 9350 backhoe attachment
JD loader bucket for 158 loader
Westendorf WL46A, white mts
JD 740 w/bucket, bale spear

CORN & GRAIN HEADS:

CIH 2208
CIH 1084, 1083, 1064, 1054
JD 215, 218, 220
JD 915, 918, 920, 925F, 930F
CIH 1020-20', 22.5', 25'
2 – JD 694
2 – JD 843
2 – JD 643
JD 644
JD 444, 443
MF 1163
IHC 863
2 – Wemhoff 30' head trailers

TRUCKS & TRAILERS

1992 Wilson 43' grain trailer, air ride, ag hopper
1982 Hobbs 42' grain trailer
1987 Etnyre 7500 gal. tanker
1990 Peterbuilt 425 Cat, 15-speed
1971 Ford fire truck tanker, Humphrey
1957 Freuhauf 6000 gal. tanker trailer
1983 INT truck w/18' dry van box, diesel
1985 INT Cabover, 400 Cummins, 9-speed
1980 Ford 800 w/960 feed wagon
1979 INT F2575 boom truck, diesel
1983 INT straight truck, 18' box, diesel
1977 Ford 700 truck w/2300 gal. ss tank
Poly 3200 gal. tank on mtd on 25' truck bed, 3" pump w/motor
1983 Ford 150, 4x4, 350 motor
1989 Ford dully pickup
1987 INT 9370, 300 Cummings, daycab, 9-speed
1977 Dorsey 39' Alum. Grain trailer
1978 GMC floater w/HS 2602 spreader
1994 Kenworth T600, Cummings 430, 13-speed

PLANTERS & DRILLS:

2005 Kinze 12-23, split row, bulk fill, KP2 monitor, no-till, 6000 acres
JD 1770-16RN Conservation
JD 1770-12RN Conservation, liquid
JD 1760-12RN, folding, liquid
JD 1750-8RN, liquid
JD 7300-12RN
JD 7000-16RN, liquid fert
JD 7340-8RN, Red Ball fert.
4 – JD 7300-8RN
4 – JD 7300-6RW
2 – JD 7100-8RW
2 – JD 7100-8RN
4 – JD 7100-6RW
2 – JD 7200-8RW
JD 7200-8RN, liquid fert
JD 7200-6RN, dry fert, finger pickup
JD 7000-6RN, liquid fert
JD 7200-4RW, dry fert.
JD 7000-4RW, dry fert
Liquid fert for 16R planter, 1 arm coulters
Hiniker 4836, 30', Red Ball fert., bulk fill, NEW
CIH 950-8RW, liquid fert, insect boxes
CIH 900-12RN
CIH 1200-8RN, 3pt
Kinze 2500-8RW
2 – White 6700-12RN
White 5700-8RN
JD 1530-20' no-till drill, less than 160 acres
JD 1520-20'

TILLAGE:

JD 512, 5-shank disk ripper, like new
JD 510, 9-shank disk ripper
JD 230-22' disk
JD 630-21', 27' disk
JD 630-25' nspace
JD 220-21' disk
JD 1010-30' field cultv.
Krause 4900-22', 24' disk
Brillion 9-shank 3pt ripper
Brillion 5-shank disk ripper
Yetter 8-shank inline ripper w/hillers, markers
CIH 496-21', 25', 32'
CIH 490-21'
JD 235-26', 24', 22'
Brillion Zone Commander 6-shank
Glenco 25' diskovator
JD 980-36' field cultv.
Landell 850-30' diskovator
INT 475-20' diskovator
Sunflower 28' field cultv.

HAY EQUIPMENT:

NI 486 baler
CIH 8480 baler
2005 CIH RBX562 baler, 5000 bales
JD 530 baler
JD 566 baler
CIH 8465 baler
JD 567 baler, net wrap
JD 535 baler
INT 3650 baler
NH 256 rake
NH 311 baler, 2-cyl., like new
2 – Vermeer R23A rake
3 – 2004 JD 4895 swather, 16' heads
JD 1424 swather
Hesston PT10 swather
JD 2280 swather, 14' diesel motor
CIH 8460 baler

MICELLANEOUS:

JD 5730 Chopper, w/Green 3RW, 5.5 Green hay head, NICE
NH 892 Chopper
Buffalo 440 feed wagon w/scale, 1 year old
Buffalo 440 feed wagon w/scale, very nice
Butler 350 feed wagon w/scale
Kelly Ryan 5x12 feed wagon, nice
Henke 370 feed wagon w/scale
Hancock 8yd scraper, pto
2 – Soil Mover 6yd scraper
Ashland 5yd scraper
2 – JD 1518 Bat Wing shredders
Hiniker 6000-8RN cultv.
FH silage blower w/hopper
Hydraulic squeeze chute
2 – FH accumulators
OMC 424 grinder/mixer w/scale
Degelman 10-12' dozer blade
Great Plains 300 gal. 3pt sprayer, monitor, 60' booms
Blue Jet 13-knife 30' Anhydrous rig, Raven monitor, walking tandem, pulltype
Dempco 800 gal. pulltype sprayer, 60' booms
Bulmgahrt 3pt 50' sprayboom
Bestway 750 gal. sprayer 50' booms, hyd. lift
Schaben pull-type sprayer, 60' booms, monitor, foam makers
Bearcat 15' Packer
Custom Air 1000 grain vac
Degelman 12' 6-way angle, 9000 mts
Parker 4800 gravity box
United Farm 760 hydra grain cart
JD 885-4RW cultv.
Finco pto grass seeder
3pt Knuze pallet fork
Krause rear mt bucket
8-Ton Paxton bulk bin
Chevy 454 engine w/radiator, clutch
NI 3618 spreader w/slop gate, nice
Neco grain cleaner
Vandale 3200 gal. honey wagon
Alloway 20' shredder
Balzer 30' shredder
JD 40 spreader
2 – Knuze silage wagon, SHARP
3 – Gehl 960 silage wagon
2 – JD 125 chuck wagons
Henke silage blower
Best Way pull-type sprayer, 60' booms, monitor, foam markers
Fast Bar 3pt, 60' booms
PK 200 gal. slimline saddle tanks w/ JD30-50 mts.
INT 2-wheel pickup trailer w/rack
Hyd. Post driver
52 – 30'x6" Irrigation pipe
Esab 250 wire welder w/alum. spool gun
Hobart 250 wire welder

Can't attend the auction, Bid live, Bid online at:

www.proxibid.com/michaelwegener



PRE-APPROVED FINANCING or LEASING AVAILABLE THRU AG-DIRECT, CALL LORI AT 402-923-1160 FOR INTEREST RATES & INFORMATION.

OWNERS NOTES: We're offering a great line of quality late and early model equipment. This is a partial listing as we are expecting a lot more machinery by sale time. **Items listed are subject to prior sales, as we buy, sell and trade daily.** If you don't see it, give us call. We provide good loading and unloading facilities with trucking available to and from sale including the entire US, Canada and Mexico. Lunch on Grounds: Lindsay Holy Family Boosters

TERMS & CONDITIONS: All potential buyers must register at the office. All items are sold "as-is" with all faults and defects. Must be paid for in full on sale day with cash, cashier check, or personal or company check, if accompanied with a bank reference letter. **NO DRAFTS ACCEPTED.** Buyer responsible from time of sale and will not hold MWI responsible for any liability from theft, accidents or fire. Items purchased and not picked up after 60 days will be retagged to buyer and sold. Unknown or first time consignors must furnish MWI a bank reference letter prior to tagging-in merchandise. Items must be free and clear of any encumbrances of any and all types. MWI will not price protect your merchandise in any fashion, regardless. All sales must come through MWI office. Announcements made DAY OF SALE supercede all printed material. MWI nor the Auctioneers will NOT be responsible for hours or misrepresentation of any kind on all equipment

For More Information, Call: MICHAEL WEGENER IMPLEMENT, INC.

Office: 402-923-1160

CORNLEA, NEBRASKA

Mobile: 402-920-0168

Website: www.wegenerimplement.com • E-mail: wegenerimplement@hughes.net

**MUCH MORE TO
ARRIVE BY
SALE DAY!**

Horsin' Around

By Don Coldsmith



Let Us Give Thanks

A few weeks ago I was thoroughly enjoying breakfast as I began to mentally plan my day. At home as a child, I remember the importance of breakfast. In our family it was mandatory. Without the energy furnished in a hearty breakfast, how could a person last until noon, which was dinner not "lunch." The evening meal was supper, of course, and must be hardy enough to last until morning, (the longest time without food). There, we "break our fast." Breakfast!

I was eating a bagel, which I had never even heard of until I was grown and out on my own. No special reason, except that

bagels are an ethnic food, a sort of a Jewish doughnut. Not many were found in the great plains until after World War II, because families of Jewish descent were scarce.

There's more of a mix now, and less of a fuss about it. At least, I hope so. There's likely to be some friction when an ethnic mix occurs, but a lot depends on the attitude of the newcomers. That's another subject, however.

The history of bagels goes back into ancient times, and can be narrowed down to the bible story of the Jews when under the leadership of Moses, got out of Egypt in a hurry, away

from their virtual slavery. At one time, I did a lot of research about Moses. He practically became the founder of modern civilization, and at least three major branches of religion. But that's another story. For this purpose, bagels. Let's take a look at the setting. He needs to lead the Jews out of Egypt, against the military might of the most powerful army in existence.

Timing is everything, to fit into the annual weather pattern. They must be packed and ready for travel, with food to travel on. Meat will be cooked at the last moment, and every house of

a family of "the People" marked so that a quick message will rouse them into action. They'll need food for travel, of course, besides that of meat.

Bread is a staple food of their culture, as in our own. Here, we can see a problem. Bread is very susceptible to spoiling because of the intrusion of mold, a fungus-like airborne growth which seems to be found everywhere. But, it does require air.

Enter Moses again. He had been educated as an Egyptian prince, in all the subjects available: military, math, biology, language, medicine ... we get the idea.

I'm sure Moses did some experimenting. Bread, in the presence of air, will mold. In the middle of a loaf of moldy bread, however, is a soft, mold-free center.

We can imagine the frustration of the Emperor's

cooks with his experiments. Eventually, Moses came up with the bagel. It has a hard but edible shell, which serves to protect the soft center. When it's cooked, the soft center becomes hot enough to kill any mold that happens to be there. The outside "shell" can't easily be penetrated, so unless it's broken, very little chance of spoilage remains.

The doughnut-shaped bread can be strung on a cord, a thong, or a stick, and will "keep" for far longer than any other design of "bread" we can think of. In addition, it even tastes good!

For symbolic purposes,

we can think of the bagel in its true light. It saved the civilization from which at least four major religions have emerged. Besides, they're delicious.

See you down the road.

Subscribe to

GRASS & GRAIN

Call: 785-539-7558
or ONLINE at:
grassandgrain.com

AUCTION

SATURDAY, FEBRUARY 23 — 10:00 AM
Located at 505 S. Walnut — INMAN, KS

FURNITURE, COLLECTIBLES, HOUSEHOLD ITEMS

Numerous collectibles including: 1,000 plus caps; match boxes; cups and mugs; 2,000 plus pens and pencils; yard sticks; business cards; calendars; 50 caps representing all 50 states; 1921-2007 truck tag set; 105 co. passenger style and truck style ea. license plates; advertising items; toys and a full line of furniture, household and garage items.

VIRGIL & MARIE REGEHR — SELLERS

VAN SCHMIDT • Auctioneer/Realtor
620-367-3800 or 620-367-2331
Richard Ediger, Auctioneer • 620-543-2787
www.kansasauctions.net/schmidt

We have Hunting Property Buyers!

Does your land have hunting potential?
We are averaging 50,000+ hits/month on our marketing websites.

These folks are looking to Buy, Lease or Hunt
Quality Kansas Hunting Properties.

If you have land to **Sell or Lease** give us a call, our hunting properties specialist Mark Uhlik will be glad to visit with you.

Broker inquiries welcome. We co-op.

The Realty Associates

Mark Uhlik
Agent/Auctioneer
785-325-2740

John Rhine
Broker
888-811-5297

FARM AUCTION

SATURDAY, FEBRUARY 23 — 10:00 AM

Location: From Hanover, KS go 3 miles South on Hwy.148 to Hwy 36 and Hwy. 148 junction. (Pony Truck Stop), West 2 miles on Hwy 36 to Yankee Rd., then 3/4 mile South. From Washington, KS, 8 miles East on Hwy 36 to Yankee Rd., then 3/4 mile South. From Marysville, KS go 13 miles West on Hwy 36 to Yankee Rd., then 3/4 mile South.

TRACTORS & TRUCKS; COMBINES AND HEADS; IRRIGATION EQUIPMENT; HAY; FARM EQUIPMENT; CATTLE AND HORSE EQUIPMENT; OLD COLLECTIBLE EQUIPMENT AND MISC.

See last week's Grass & Grain for complete listing.

LUNCH: Trinity Lutheran Ladies Aid

AUCTIONEERS NOTE: Wilbur and allen didn't throw anything away. if you don't have one at home, there will be one on this sale. Will run 2 rings so plan accordingly. Iron buyers, don't miss this sale.

ORDER OF SALE: We will sell rack items first, horse tack and related items around 11:00, hay around 12:30 and machinery to sell last.

ALAN SCHRAMM ESTATE
Wilbur D. Schramm Adm.

Auctioneers:

Dave Bures 402-766-3743 • Don Prell 785-799-3787
cell: 402-239-9717 cell: 785-562-6787
www.homesteadland.com • 112 S. 19th, Beatrice, NE



TOUGH...

That's What Laflin's Cattle Are - TOUGH!!

Selling 80 Strong - Powerful - Beef Bulls

Coming two-year olds, Fall Yearlings, Spring Yearlings

Complete Performance and Ultrasound Data, Calving Ease, Carcass and Growth



Basin Franchise Son

BW	WW	Milk	YW
I+0.3	I+60	I+22	I+84



Woodhill Foresight Son

BW	WW	Milk	YW
I+5.3	I+61	I+22	I+95



Fast Forward Son

BW	WW	Milk	YW
I+2.7	I+46	I+12	I+77



Cutting Edge Son

BW	WW	Milk	YW
+2.1	+62	+25	+98

Selling 70 Fancy Females

10 Outstanding Jr. Heifer Prospects, halter broke and ready to go.
Cows & Calves, Bred Heifers, Bred Cows, Embryos and Pregnancies.



Feb. BAAR Forward Heifer

BW	WW	Milk	YW
I+2.7	I+46	I+12	I+77



Feb. New Day Heifer

BW	WW	Milk	YW
I+1.4	I+43	I+17	I+87

Annual Production Sale

Friday, March 7, 2008 - High Noon
at the Ranch - Olsburg, Kansas



"A NAME YOU CAN TRUST
AND QUALITY YOU CAN
COUNT ON SINCE 1900"

Laflin Ranch - Olsburg, Kansas 66520
Phone: 785-587-5852, 620-583-4461 or 785-468-3529

Sale Consultants:

Gary Bruns (830) 391-0766 • Dallas Woltermath (308) 390-6400 • Ernie Wallace (417) 461-6652
Ty Williams (806) 729-7602 • Bill Conley (816) 248-5533 • Jason Flory (785) 979-2183



Kansas Wheat representatives present the 2007 Wheat Advocate Award to Senator Pat Roberts. Pictured left to right are Aaron Harries, Joe Kejr, Jerry McReynolds, Sen. Pat Roberts, Paul Penner, John Thaemert, David Schemm, and Larry Kepley.

REAL ESTATE AUCTION

**80 ACRES M/L NEMAHA COUNTY, KANSAS LAND
TUESDAY, MARCH 4 — 10:00 AM**

KNIGHTS of COLUMBUS HALL, 211 Knights of Columbus Drive — SENECA, KS
(East edge of Seneca, Kansas)

LAND LOCATION: NW Corner Of "J" Road & 120th or 3 miles South of Seneca on "J" Road "Locally known as the Nightingale Blacktop"

LEGAL DESCRIPTION: East 1/2 of SE 1/4 of 16-3-12, Mitchell Township, Nemaha, County, Kansas

INFORMATION: This farmland has been in the CRP program for the last twenty years. The present contract expires in Sept. 2008. There is approx 52 acres that are in CRP, the balance is grass, etc. The farm is bordered on two sides by a hard surfaced road with rural water across the road on the south.

The 2008 CRP payment of \$ 2,816.00, will sell

with the land. All mineral rights will also sell with the land

TERMS: Seller requires 10% of the selling price as earnest money immediately following the auction, along, with signing of a contract. The balance will be due in full, on or before, April 4, 2008. The escrow and closing fees are to be shared equally between the Buyer and the Seller.

Taxes of \$ 335.08 will be prorated to the closing date. Buyer or Buyers are to have their financing and all inspections in order, prior to the auction.

Property will sell subject to the Sellers confirmation. Maximum Realty Inc. is representing the Sellers.

MELVIN & DOROTHY MERGENMEIER, SELLERS

Auction Conducted By

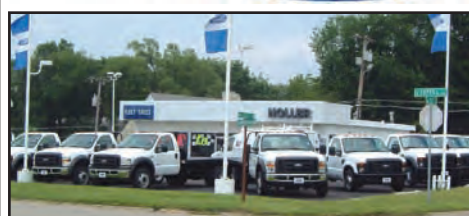
MAXIMUM REALTY, INC.

Roger Hartter, Agent/Auctioneer * 785-284-259 or 785-284-2643

Laird Noller



Ford
Business Preferred Network
SALES SERVICE FINANCE



IN STOCK!
F-350 • F-450 • F-550
Gas ... Diesels ... 4x2 ... 4x4!



2008 E SERIES VANS ARE HERE!



2008 F-150 4x2, 4-Dr., Reg. Cab XL
6 cyl., 5-spd.

\$14,995 plus freight



stk#KK8297



STK# JN8388

2007 E-350 CUTAWAY
KUV VAN \$3,500 REBATE
ONLY ONE LEFT
V-8, Auto, AC



CAB N CHASSIS

Multiple Wheel bases, gas or deisel,
4x4 or 4x2



stk#KK7941

2008 F-350 Reg. cab, 9' flatbed
w/gooseneck hitch, V8, Auto, AC
was: \$30,730 **NOW \$23,995**

2008 F-350 4x4

NEW 6.4L PS Dual Turbo Dsl., All Terrain, Tow Command
Sys., Ltd. Slip, 9' Flatbed w/bulkhead & gooseneck hitch.
Also receiver hitch & wiring.

Was **\$41,285** **NOW \$32,995***



*Includes owner
loyalty rebate.

21st & Topeka Blvd. • TOPEKA, KANSAS
785-235-9211 • 1-800-432-2931

BRIGGS COMMERCIAL VEHICLE SALES

Briggs

WHOLESALE FLEET OUTLET
BRIGGS FLEET/LEASE VEHICLES
4810 SKYWAY DR MANHATTAN, KS 66502



Ask for
Larry

CONTACT LARRY RUTHSTROM

PHONE: 785-565-5220

785-410-5451

INVENTORY BLOWOUT!

**2004 DODGE
RAM 2500**

\$19,995



4WD, Hemi, leather!

**2007 ISUZU
ASCENDER**

BRAND NEW



4x4, Auto

MSRP: \$30,183

SALE PRICE: \$22,183!

**2007 ISUZU
EXT. CAB.**

\$14,763



New holdover, 4 cyl, cruise, Auto.

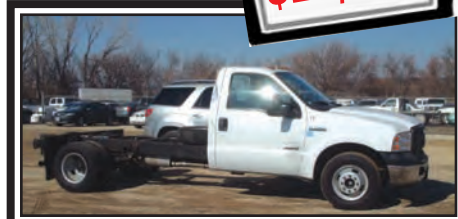
CHEAP TRUCKS!

- 1995 Chevy C-3500
2WD with dump bed
- 1992 Dodge Ram 3500
with dump bed

Priced at \$3,995

**2007 FORD
F-350**

\$23,495



Reg. Cab, 2WD, Diesel, Auto,
27,000 miles.

**2006 DODGE
QUAD CAB**

\$29,900



2500, Auto, Cummins, 4WD,
48,000 miles.

**2004 CHEVY
K-2500**

\$25,495



Duramax, Allison, 4x4

**2006 FORD
F-350**

\$25,900



Reg Cab, 4x4, 6 speed, XL, 38,000 miles

**2004 DODGE
QUAD CAB**

\$21,900



2500 Cummins, Auto, 4WD,
54,000 miles.

**2002 DODGE
RAM 1500**

\$15,995



Long bed, 4x4, 5.9, 53,000 miles.

lruthstrom@briggsauto.com
www.briggsauto.com

Kansas Crop Improvement Association tells of new leadership

The Kansas Crop Improvement Association (KCIA) board of directors' selection of executive officers demonstrates that family tradition is alive and well in the seed business. Remarkably, all three board members who were chosen to serve on the executive team are third-generation certified seed producers — providing young leadership that is rooted in decades of experience.

The three new officers were elected by the board of directors during the seed organization's annual meeting at the Clarion Hotel in Manhattan, January 28-29.

Tim Oborny of Ed Junior Farms, Bison, was chosen to serve as the new KCIA president. Roger May of May Family Farms, Oberlin, was selected as vice president of Standards. Darrin DeLange of DeLange Seed House, Girard, is the new vice president of Research.

The newly elected officers have all served on the KCIA board as district representatives for several years. Prior to his presidential position, Oborny also held the position of vice president of Standards for three years.

The KCIA Board of Directors for 2008 includes Mike Baxa, Polansky Seed,

Belleville, central member-at-large; Calvin Bohnert, Bohnert Farm, Jewell, North Central district; Bob Bunc, Bunc Seed Farms, Everest, Northeast district; Maurice Miller, Sharp Bros. Seed Co., Healy, Southwest district; Tim Oborny, Ed Junior Farms, Bison, Central district; Tom Pauly, Tom Pauly Farm, Conway Springs, South Central district; Darwin Ediger, Ediger Farms, Meade, West member-at-large and KSIA Representative; Dean Fouts, Johnson Seed Company, Mound Valley, Southeast

district; Roger May, May Family Farms, Oberlin, Northwest district; Darrin DeLange, DeLange Seed House, Girard, East member-at-large; Gary Pierzynski, Manhattan, KSU Agronomy Department; and J. Pat Murphy, Manhattan, KSU Research and Extension.

The board of directors represents over 300 KCIA members who produce, condition, and market Kansas Certified Seed for farmers throughout the state. KCIA is a not-for-profit, membership-based organization designated as

the official seed and plant part certification agency for the State of Kansas. In addition to seed certification services, KCIA offers networking and educational opportunities, consulting, auditing, farm/field inspection, and laboratory testing services for the seed industry and other crop production related businesses.

For further information, call Kansas Crop Improvement Association at (785) 532-6118, visit www.kscrop.org, or e-mail kscrop@kansas.net.

Need a new trailer?

Come make a deal now!

ALUMINUM TRAILERS:

- 2006 Featherlite 4 Horse w/front & rear tack
- 2006 Featherlite 16' BP Stock trailer
- 2006 Featherlite BP 2 Horse slant w/front & rear tack
- 2007 Travalong 7'6" x 24 Stock trailer
- 2007 Travalong 4 Horse stock combo (Demo model)
- 2007 Featherlite Stock combo w/front tack
- 2007 Featherlite 17' Stock combo hauler w/self storing ramps

STEEL TRAILERS:

- 2007 Travalong 6'8" x 24 Advantage
- 2007 Featherlite 7 x 24 Stock trailer
- 2007 Doolittle 77 x 10 Utility trailer
- 2007 Doolittle 77 x 18 Utility trailer
- 2007 Doolittle 6 x 10 Enclosed trailer
- 2007 Doolittle 6 x 12 Enclosed trailer
- 2007 Doolittle 7 x 12 Tandem axle motorcycle trailer

Open 7 days a week
SALES • SERVICE • PARTS

Large Selection of Stock Trailers,
Horse Trailers, Car Haulers,
Utility Trailers, Enclosed Trailers

2502 Mink Rd. • Abilene, KS 67410 • 800-658-4667
sales@4seasonsrv.com • www.4seasonsrv.com

**Check out our website
for hundreds of
upcoming sales from
across the country!**

grassandgrain.com

Custom Hay Grinding

*Large capacity hay grinding
equipped with hydra fork,
select screens from high
moisture grain to coarse hay.*

- Onsite custom grinding
- Call for availability • Competitive rates

JASON BROWN **Dwight, Kansas**
785-499-5518, Home **785-223-7684, Cell**

CONCRETE & CONSTRUCTION EQUIPMENT

AUCTION

WEDNESDAY, MARCH 5 — 10:30 AM

Location: Pagel Realty Auction Facility/United Country,
705 N Arizona Ave, N Hwy 75 HOLTON, KANSAS

Pictures on web page: www.pagelrealtyauction.com

AUCTIONEER'S NOTE: Claycamps have been in business for 32 years and are pursuing other interests. Small construction firm with well maintained equipment that came in off a recent job site. Bank letter of credit required with guarantee of payment. Online bidding with Proxibid: www.proxibid.com.

TRUCKS
2005 F-350 4x4 D.R.W., 6.0 liter, auto. transmission, ext. cab, flatbed, stainless and aluminum boxes, 100-gal. fuel tank, pwr. windows & locks, AM/FM, CD & cassette, pprox. 68,000 miles, 1FDWX37P75EB53264
1999 F-350 4x4 D.R.W., 7.3 liter, auto. transmission, ext. cab, flatbed, stainless and aluminum boxes, pwr. windows & locks, AM/FM & cassette, approx. 177,000 miles, 1FDWX37F9XED-20783
1999 F-350 4x4 D.R.W., V10, 5-spd. transmission, reg. cab, AM/FM cassette, approx. 100,000 miles, 1FDWF37S5XEC25413

TRAILERS
2004 Target trailer, tandem duals, 10k axles, 25' flatbed plus 6' dovetail w/ramps, HOGU30294S004704
1999 Wildcat trailer, tandem duals, 10K axles, 24' flatbed plus 6' dovetail with ramps, 1W9SF2926XA227210
20'x8' gooseneck trailer, double axle (shop built)
22' gooseneck enclosed tool trailer, dual axle Type A office trailer, double axle, heat, air and lights

EQUIPMENT
2006 TL140 Takeuchi track loader, 75" bucket with teeth, case controls, heat & air, approx. 350 hrs., 21404627;
1997 Case 9030 B Excavator, heat, air, AM/FM radio, 42" bucket w/side cutters, 9' 10" arm, Daco 302083, approx. 6,500 hours; 1988 JD 690 D.L.C. Excavator, heat, approx. 7,800 hours, 36" bucket w/side cutters, 9' 6" arm, major repairs in last 1,000 hours (hyd. pump & undercarriage), 527776515776; Hyster PA-50, 5000# forklift, 4-cyl., gas eng., 12' 6" maximum fork height, 119D023-92X; Linkbelt LS-98 Crawler Crane, 4-71 Detroit, PLL rear drum, 80' boom, 9LR1522; 1990 Case 1845-C, 72" bucket, logging tracks, rebuilt motor & repair work by dealer 1,000 hours ago, approx. 4,400 hrs., PINJAF0041684 ; Pile driving leads 3,000-4,800-lb. hammer, 10" & 12" pile caps; Clam buckets, drag buckets & wrecking ball; Shark hot water pressure washer; David White transit level and tripod; Lincoln welder/generator, 16HP Briggs, 8000-watt; 2 Winco generator, 1 good, 1 for parts; Symons shoring system for deck false work, adjustable steel shoring jacks, 39 adjustable steel bridge jacks.; Stihl 14" cutoff saw w/blades, ; 11/2" rotary dill & hammer, various size bits, various power & hand tools, concrete tools, diamond blades, 90# jackhammer, chutes, screed pipe, propane heaters, concrete blankets, plastic, nails, tie wires, wall ties, walkaway brackets, chains, boomers, straps; wire ropes, erosion blankets, air hoses, 4'x8' poster board, traffic control signs, steel mounting post.

CONCRETE EQUIPMENT
Allen Razor Back screed, 35' length, hydraulic winch, crown bracket, Honda 8-hp motor; Vibra Strike w/8' & 12' alum. screed boards; Vibratory pull screed; Concrete vibrators w/various lengths of stingers; 2 Power trowels, (1) 30", (1) 48"; Aluminum screed boards, 8', 10' & 12'; Misc. concrete tools, floats & trowels; 1 Garbro One-cubic yard concrete bucket with hopper; (2) 3/4 cubic yard concrete buckets; Symons Forms, (153) 2'x8' panels, (20) 2'x6' panels, (66) 2'x4' panels; Many filler panels, corners and all related hardware

WATER PUMPS
(3) 3" trash pumps, (1) 3" diaphragm pump, (1) 2" trash pump, suction & discharge hoses

MATERIAL
520'+ H beams, 10 @ 28', 12 @ 20'; 670 sq. ft. sheet pile, 12 pieces @ 25'; Plywood, 2"x4", 2"x6", 2"x8" lumber, forms & stakes; 3"x12" & 4"x16" timbers, assorted; 7"x9" & 10"x10" timbers; Miscellaneous construction items & shop items.

Load out available for 3 days after auction. Lunch by St. James Church. Announcements made day of auction take precedence over printed material. Not responsible for accidents or thefts.

CLAYCAMP CONSTRUCTION, INC.

Brad & Sharon Claycamp, Soldier Kansas
Call Brad for appointment or info: 785-834-2135
(home office evenings) 785-806-4156
(Brad's cell)

Auction Conducted by:
Wayne Pagel, CAI auctioneer, 785-364-7304
Beth Pagel, Broker 785-364-589-2456
Aaron Watkins, Sales 785-305-1404

Kansas Cattlemen's Association

P.O. Box 1847 • Manhattan, KS 66502 • Phone (785) 539-6014
E-mail: cowsrus@st-tel.net • Website: www.kansascattlemen.com

Callicrate Feedyard

Mike Callicrate
St. Francis, KS
785-332-3344

Finney County FY

Doug Parham
Garden City, KS
620-275-7163

Maverick Feeders LLC

Gene Carson
Dodge City, KS
620-227-3308

Circle Feeders Inc.

Bill Porterfield
Garden City, KS
620-275-0108

Hoxie Feedyard

Scott Foote
Hoxie, KS
785-386-4519

Winter Feed Yard

Ken Winter
Dodge City, KS
620-225-4128

Penner Cattle Inc.

Dennis Penner
Ingalls, KS
620-335-5190

Pike Feeders Inc.

Byron Pike
Minneola, KS
620-885-4452

Shaw Feedyard, Inc.

Bill Shaw
Ashland, KS
620-635-2670

Ottawa County Feeders

Perry Owens
Minneapolis, KS
785-392-2184

The Kansas Cattlemen's Association is Kansas' fastest growing cattlemen's association. Our mission is to restore profits, self-esteem, freedom, fair trade, trust and community pride back to the farms, ranches and rural communities across Kansas and the Nation.

Who Has Your Interests In Mind?

"My cattle carried the ranch on their backs a few years ago. Lately, I have been relying on my crops. I know that KCA is working to keep competition in the Farm Bill. Without competition, producers do not get a truly fair price for their cattle. I'm sticking with the association who understands my needs."

"I am just a small producer...trying to make a living. But, I know KCA is out there looking out for me."

"We have a small business and we belong to KCA because they are the only organization that is serious about keeping small towns and independent businesses thriving. From what I have experienced, other organizations care about the big companies. KCA cares about the individuals."

"I saw KCA at the Farm Show in Topeka and I started talking to one of them, and they are promoting USA beef. Why shouldn't we promote USA beef? Why wouldn't we? I joined right there at their booth. I think what they are doing is right, and I encourage everyone to join."

- KCA - With you in mind!!!

A reminder that the R-CALF Convention will be held in Omaha, NE Feb 20-23, 2008. Convention details an be found at www.r-calfusa.com

McPherson County

Feeders

Allan Sents
Marquette, KS
785-546-2216

Rooks County

Feeders, LLC

Phil Conyac
Plainville, KS
785-434-2114

Ford County

Feedyard Inc.

Danny Herrmann
Ford, KS
620-369-2252

Krebs Feedyard

Dwight Krebs
Scott City, KS
620-872-2514

Dodge City

Feeders

Cary Wimmer
Dodge City, KS
620-227-9700

Coake Feeding Co

Richard Koenke
Dodge City, KS
620-227-2673

Program in Marysville to look at ethanol's impact on beef production

Ethanol production in the United States has "fueled" the rise in grain prices which has increased the price of feed grains, in particular, corn and grain sorghum.

The increase in feed grain prices has caused livestock producers' cost of production to increase as well. A by-product of ethanol production is distiller's grains, which can be a cost effective feedstuff. However, distiller's grains are variable and can cause some challenges.

To help beef producers

become more profitable and manage distiller's grains in their rations, the Marshall County Extension Service will host an educational meeting about ethanol's impact on beef production.

"Ethanol's Impact on Beef Production" meeting will be held on Wednesday, February 20 at the Marysville City Building. The meeting will start at 1:30 p.m. and end around 4 p.m.

Speakers for the afternoon meeting will be Twig Marston, K-State Research

and Extension Beef Specialist, and Jim Mintert, K-State Research and Extension Livestock Marketing Specialist.

Marston will discuss feeding management and storage of distiller's grains and the pros and cons of value added programs. Mintert will discuss the impact ethanol is having on beef production and discuss the 2008 cattle market outlook and cattle cycle. This will be a great meeting for livestock producers or anyone interested in ethanol's impact on beef production.

Please pre-register by completing the registration form in February 2008 General Extension Newsletter, or go to the Marshall County Extension website www.oznet.ksu.edu/marshall, or by contacting the Marshall County Extension Office by Tuesday, February 19, so we know how many people to prepare for.

For further information, interested persons can contact Michael Vogt, Marshall County Extension Agent at (785) 562-3531, or by e-mail at mvogt@ksu.edu.



Kyle and Rocky Caldwell of Lockwood, Mo., attended the J&N Ranch 15th annual production sale east of Leavenworth, where they selected several head of registered Black Hereford breeding cattle.

785-539-7558 Call us for Catalogs, Sale Flyers, Magazines, Calendars, Brochures, Books, Newspapers and ask for Marlin.

AG PRESS

HARVESTING & TRUCK AUCTION

TUESDAY, MARCH 18 — 10:34 AM
94 Buckskin Road — INMAN, KANSAS

Kenworth semi-tractors; grain trailers; Kenworth service truck; John Deere combines; Brent grain carts; house trailers; combine & header trailers; more.

See at www.bruauction.com

KEVIN & HEIDI NEUFELD, SELLER
 620-727-1329

WADE BRUBACHER, AUCTIONEER/REALTOR
 316-283-9183

FARM AND LIVESTOCK EQUIPMENT AUCTION

SATURDAY, MARCH 1 — 9:00 AM
 Location: Wichita County Fairgrounds, east edge of LEOTI, KS.

TRACTORS & COMBINES
 1989 JD 4755 tractor, PS, 3pt., PTO, duals, 10,013 hrs., quick hitch, all new rubber, rebuilt head & injectors, clean unit; 1984 JD 4850 tractor, PS, MFWD, 3 pt. pto, quick hitch, 10,159 hrs.; 1983 JD 8650 tractor, 4-wheel drive, duals, 8,575 hrs., PS, no 3 pt.; 1998 JD 9610 combine, duals, 1745 separator hrs., bin extension, chaff spreader, 30ft. platform, field ready; 1979 JD 7720 combine, hydro, 24 ft. platform, 5,680 hrs.; 1979 Gleaner L2 combine, 24 ft. platform; JD 843 corn head, 8 row, low tin, 700 acres on new rolls and deck plates; JD 843 corn head, 8-row; JD 653 row head; JD 853 row crop head, 8 row.

TRUCKS
 1981 IHC tandem truck, Detroit 872 motor, Allison auto trans., twin screw, 20ft. bed & hoist, roll over tarp, Westfield hydraulic drill fill auger; 1986 Kenworth T600 semi tractor, 855 Cummins, 13 spd. trans., twin screw, ; 1975 Ford LN700 truck, V-8 motor, 4 spd. trans., 280 Oswalt mixer box w/ scales; 1986 White Volvo semi-tractor, 400 Cummins motor, 9 spd. trans.

SPRAY COUPES
 1989 Spray coupe, 216, AC, 1300 hrs., 55ft. boom; 1992 Spray coupe, 220, PS, AC, 60ft. boom, hydraulic fold, 1850 hrs.

TRAILERS
 1974 Target pup trailer, 20ft., roll over tarp, 700 bu.; 1979 Tempte 40ft. grain trailer; Brute gooseneck 40ft. flat deck trailer, (2) 12,000 lb. axles, pop-up dove tail, nice; 1994 C&M gooseneck stock trailer, 7' x 22'; 1992 Tempte 42ft. grain trailer, spring ride.

CARS & PICKUPS
 Selling Times: 10:30 am Irrigation pipe, 11:00 am Livestock items, 12:30 pm Farm Equipment, 2:00 pm Tractors & Trucks, 3:00 pm Cars & Pickups, All times are approximate.

*****ALL items to be removed in 14 days*****

AREA FARMERS - OWNER
www.berningauction.com

SALE CONDUCTED BY: BERNING AUCTION INC.
 P.O. Drawer Q, Leoti, Kansas 67861 • 620-375-4130
 "Don't Trust Your Auction To Just Anyone!"

Russell Berning Ed Simon Sage Davis
 Leoti, KS Marienthal, KS Scott City, KS

LAND AUCTION

80 ACRES REPUBLIC COUNTY LAND

SATURDAY, MARCH 1 — 10:00 AM

Auction held at the Community Hall in MUNDEN, KANSAS

80 Acres more or less, farm has 73.7 acres upland CRP cropland, CRP contract expires 9-30-08. 1.27 acres old vacant farmstead, and 2.11 acres waterways, CRP payment is \$3,677.00 a year. Taxes are \$690.41. This farm has good hunting and good producing cropland.

LOCATION: 2 miles North, 2 miles East and 1/2 north of Munden, Kansas.

LEGAL: S 1/2 NE 1/4 in Section 23, Township 1 South, Range 2 west of 6th PM in Republic County, Kansas.

TERMS: 20% down day of sale balance on title insurance on or before April 1, 2008. Taxes: 2008 paid by buyers. Possession: Farm is all in the CRP and it expires 9-30-08. Buyers to receive 2008 CRP payment. Escrow Agent: Astra Bank, Belleville, Kansas, title insurance and escrow fees split equally. Real Estate Broker represents sellers. All acreage and information taken from reliable sources but are not guaranteed by the sellers or auctioneer. Statements made sale day take precedence over printed material. Not responsible for accidents.

EVELYN FLASKA

ROGER NOVAK REAL ESTATE
 Belleville, Kansas

785-527-2626 Office or 785-527-1302 Cell
 Auctioneer & Real Estate Broker

Website: www.nckcn.com/novakbrosgrbieauction/

LAND AUCTION

119 Acres Marion Co. Grassland/Hunting Land
MONDAY, MARCH 3, 7:00 PM
Florence Senior Center, 417 Main St., FLORENCE, KS.

LEGAL DESC: S1/2 of NW 1/4 & N1/2 of SW1/4 of Sec. 20-21-5, Marion Co., KS; exc. a 41 A tract.

LAND LOCATION: From Florence, go 2 mi South on Hwy 77, then 1/2 mi East on 90th, then go 1/2 mi North on Yarrow.

All grassland of which approx. 29.15 Acres is brome grass and the balance native grass. The native grass acreage has good perimeter fences and several ponds for good water supply. The brome grass acreage is fenced separately for diverse use. Deer are in abundance in the draws and trees in this pasture, offering excellent whitetail hunting.

A nice tract of grassland in a good and accessible location that offers various grazing options. Deer hunters should also pay attention as there are many deer bedding and crossing over this pasture. Ask about the historical markings also found on this land.

POSSESSION: Given at closing and upon full settlement.

TERMS: Earnest money deposit of \$10,000.00 due day of sale, payable to Hannaford Title Co. The balance will be due on or before April 4, 2008.

See www.leppke.com for more info., maps, terms.

JACKIE FREEBORN, SELLER

LEPPKE REALTY & AUCTION

501 S Main, Hillsboro, KS 67063
 620-947-3995 • www.leppke.com

LYLE LEPPKE, Auctioneer/Broker, 620-382-5204
ROGER HIEBERT, Auctioneer/Sales Assoc., 620-382-2963



LAND AUCTION

SPORTSMEN'S & LAND OWNER'S PARADISE

OXIDE CREEK AREA

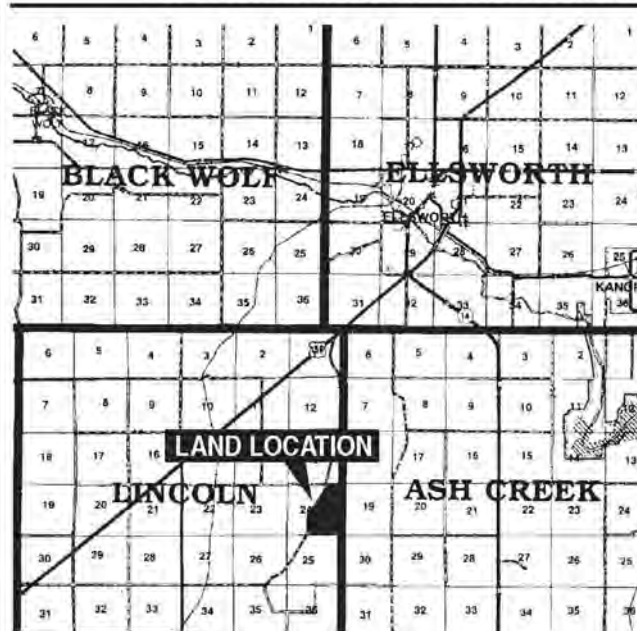
340 ACRES M/L OF ELLSWORTH CO LAND, LINCOLN TOWNSHIP

FRIDAY, MARCH 7, 2008 • 10:30 AM SHARP

MARGARET MUNCIE TRUST

CITIZENS STATE BANK TRUSTEE - SELLER

AUCTION LOCATION: Ellsworth American Legion Hall, E. Hwy 40, Ellsworth, KS



LAND LOCATION: from Ellsworth go approximately 4 miles SW on Hwy 156, then go South 3 miles on 13th Rd (also known as Oxide Rd.)
LEGAL DESCRIPTION: A fraction of Section Twenty-four (24), Township Sixteen (16) South, Range Nine (9) West of the 6th P.M. in Ellsworth County, Kansas, lying to the East of the public road running in a Northerly and Southerly direction across said Section 24, subject to easements and rights of way of record. Contains approximately 339.8 acres more or less.

F.S.A. INFORMATION: 344 acres Farmland, 91.3 acres cropland, 65.3 acres wheat base, 33 bu. yield, 11.7 corn base, 41 bu. yield, 13.3 acres GS base, 41 bu. yield, approximately 206 acres pasture with the balance being wildlife habitat, trees, creek and RR/W. Water for livestock is provided by large pond, springs, creek, well and windmill.

TAXES: for 2007 were \$873.50. 2007 Taxes will be paid by seller. Buyer will be responsible for 2008 taxes & future years.

MINERALS: Sellers interest is selling with Real Estate.

POSSESSION: Subject to tenants rights. The entire tract is cash rented. There are approximately 61.2 acres planted to wheat. Possession of land in wheat will be after the wheat is harvested. Possession of open land will be upon closing. Possession of the pasture will be Nov. 1, 2008. Purchaser will receive the 2008 pasture land rent on Nov. 1, 2008.

TERMS: 10% down day of sale. Balance due with certified funds when title insurance commitment showing Marketable Title is furnished. Purchaser to have 10 days to examine title insurance commitment. Expense of title insurance and escrow closing fees to be split between buyer and seller. Escrow agent will be Smoky Hill Title Co, Ellsworth, Kansas. Closing to be on or before April 7, 2008 at the law office of Sherman, Hoffman & Hipp in Ellsworth, Kansas. Purchaser will be required to sign purchaser's contract day of sale. All acreages were computed to the best of our knowledge. No guarantee of acreage is given by the F.S.A. office, Seller or by Victor Bros. Auction & Realty Inc.

INSPECTION: Each potential bidder is responsible for conducting their own independent inspection and due diligence concerning pertinent facts about the property. **Take a look for yourself or call Frank Princ at 785-658-7003 for showing.** Remember the auction is at the Ellsworth American Hall, E. Hwy 40, Ellsworth, KS at 10:30 am (sharp). Victor Bros. Auction & Realty Inc. are Seller's agent only. Any statement day of sale takes precedence over any oral or printed matter.

www.victorbro.com or www.GrassandGrain.com/victor

Victor Bros. Auction & Realty, Inc.


2505 Avenue E Box 5, Wilson, KS 67490
 Phone (785) 658-2254 or 2255

FRANK L. PRINC, Auctioneer / Owner / Broker & Certified Appraiser
 785-658-2254 or 2255

AUCTIONEERS • BROKERS • APPRAISERS

John Hlaus Associate Auctioneer	Shelly Whitmer Real Estate/Licensed Appraiser PH 785/658-5525	Vicki Kaiser Real Estate PH 620/ 587-2326	J.L. Kasper Associate Auctioneer
---------------------------------------	---	---	--

Hey Neighbor



For The Love Of Horses

By Frank J. Buchman

World Champion Quarter Horses
Attract International Attention For Topeka Ranch

"Breed the best mare to the best stallion and hope you get the best foal. It doesn't cost any more to own a good one than it does a bad one."

That's John Hoffer's philosophy parlayed to wife Barbara when they decided to get into the Quarter Horse breeding business.

"We've tried to do that from the very beginning, and with 15 years in the breeding business, we are definitely seeing it pay off," qualified petite, blonde Barbara, as she hosted a tour of the couple's Hoffer-osa Ranch Quarter Horses south of Topeka.

While the couple has produced a number of world champions, their latest trophy signifying they own the world champion three-year-old open halter stallion is seen as impetus to push them into worldwide acclaim. Their home-raised buckskin named Not Kiddin Me is affectionately known as Twister.

"He has attracted interest from all over the United States and Canada, and we have 30 breeding contracts to ship his frozen semen to Australia this year," Barbara explained.

Additional contacts have been made from South

Africa, according to the owner-breeder as she showed one of their own mares bred to the six-time world champion and three-time reserve world champion in the American Quarter Horse Association and the American Buckskin Registry Association.

Emphasizing that Twister is N/N, meaning he cannot produce the HYPP degenerative muscle disorder, Hoffer said the 16.2-hand stallion, now a four-year-old, was sired by the nine-time world champion Buckleys Mr Twister. Not Kiddin, a full sister to the well-known stallion Im Kiddin, is his dam.

Trained and shown by Aaron Hall of Hall Show Horses at Kechi, Twister was presented in open competition at the World Championship Quarter Horse Show in Oklahoma City during November by Ross Roark of Texas.


The stud is standing with

Bill Lanning at Edgewood/Lanning, Inc., in Pilot Point, Texas. Intentions are to start riding Twister at conclusion of the breeding season.

While Hoffer-osa is just a decade and a half old, Barbara's horse sense goes back to the cotton fields of Memphis, Tenn. "When my dad got his first tractor, I got his work team, a horse and a mule," she remembered. "I'd

Continued on page 13

POWER
TO THE PEOPLE.
ELECTRIC
POWER STEERING,
THAT IS.



FourTrax® Foreman®
with Electric Power Steering
Recommended for riders 16 years and older.

It's a revolution in the world of all-terrain vehicles. Honda's all-new Electric Power steering. Available only on the 2007 Honda FourTrax Foreman, it means lighter steering inputs. And there's also an all-new air-cooled 500-class engine. One ride and you'll be a believer. And it's at your local Honda Dealer.

Coffey County Honda


105 South Main, New Strawn, KS 66839

1-800-279-3650




honda.com BE A RESPONSIBLE RIDER. REMEMBER, ATVs CAN BE HAZARDOUS TO OPERATE. FOR YOUR SAFETY, ALWAYS WEAR A HELMET, EYE PROTECTION AND PROTECTIVE CLOTHING. AND NEVER RIDE ON PAVED SURFACES OR PUBLIC ROADS. KEEP IN MIND THAT RIDING DOESN'T MIX WITH DRUGS OR ALCOHOL. Honda RECOMMENDS THAT ALL ATV RIDERS TAKE A TRAINING COURSE AND READ THEIR OWNER'S MANUALS THOROUGHLY. For rider training information or to sign up for a rider training course, call the ATV Safety Institute at 1-800-887-2887. FourTrax® Foreman® and Best on Earth® are registered trademarks of Honda Motor Co., Ltd. (2/07) 07-0200

Access
More
Profit.



AgVenture aggressively accesses cutting edge technology from not one, but all the leading trait and technology providers. Technology access tied to locally adapted, top-performing hybrids empowers AgVenture growers to optimize seed placement, stay diversified and target more profits from every acre. Now is the time to contact AgVenture and add a competitive advantage to your fields.

Access Starts with



AGVENTURE

GROW WITH CONFIDENCE

Call RSC Contact Name

AgVenture Company

• Call Your Local Distribution Center •

Blackburn Farms	St. Paul, KS	620-423-0835
Corwine Seeds & Service	Quenemo, KS	785-214-0313
Ericson Farms	Fort Scott, KS	620-547-2577
Triple D Seed	Coffeyville, KS	620-251-2100
Fuller Farms	Emporia, KS	620-344-3363
Theis Bros. Seed	Leavenworth, KS	913-682-4376
Sundstrom Farms	Ottawa, KS	785-241-0922
Tischhauser Seeds Inc.	Wilsey, KS	785-497-2888
Lloyd Isch	Gridley, KS	620-427-4107

Tom Woodworth, Owner/Manager

AgVenture of Eastern Kansas, LLC

Iola, KS 620-228-3148

www.agventure.com

REAL ESTATE
AUCTION

THURSDAY, MARCH 13 — 10:00 AM

To be held at the VFW Club located at 407 Washington St. in
CLYDE, KANSAS

Location of Real Estate: 6 mile North (on blacktop 290th Rd.) of Clyde, Ks., or 1 mile East (on #148 Highway) & and 2 miles South (on 290th Rd.) of Agenda, Ks. (290th & Xavier Rd):

Legal Descr.: The SE 1/4 & E 1/2 of the SW 1/4 in 22-4-1 W. of the 6th P.M., Republic Co., Ks.:

General Descr.: A tract of approx. 240 acres, slightly rolling land w/26 acres of pasture. w/near new fence, 15 acres brome grass and old farmstead w/ older house and barn w/water well and submergible pump. There are 185.83 A. tillable terraced cropland, approx. 5 acres waterways and waste. 59 A. planted to wheat for 2008, w/ 124.83 A. open for spring crops w/ 44.6 acres stubble ground sprayed & burned down for no till spring crops.

Base Acres: 95.5 A. wheat; 59.6 A. milo; 15.7A. soybeans;

2007 FSA Payments: \$2,540.00

Real Estate Taxes: \$1,851.14

Possession: On all land planted to wheat, after the 2008 wheat harvest, on all other land day of auction.

Terms: 20% of purchase price down on day of auction, balance due in the form of certified funds upon delivery of clear & merchantable title on or before April 14, 2008. Title insurance will be used and paid 1/2 by sellers and 1/2 by purchaser. Sellers will pay 2007 and all prior years real estate taxes. Purchaser will receive landlords share (1/3) of 2008 wheat & FSA payments and will pay landlords share of related expenses. Purchaser will also pay for spray & burn down on 44.6 acres.

Note: This is good productive land, in a good area on a blacktop road. Look it over, make your financial arrangements and plan to attend the auction. All statements made at the auction will take precedence over all advertising material. Larry Lagasse Auction & Real Estate represents the sellers as agents.

JAMES & DALE ANDERSON & DENISE LECUYER SELLERS

AUCTION CONDUCTED BY
LARRY LAGASSE AUCTION & REAL ESTATE
CONCORDIA, KANSAS

Web site: www.lilagasseauction-re.com E-mail: llagasse@llagasseauction-re.com

Larry Lagasse, R.E. Broker
PH: 785-243-3270


Lance Lagasse, Assoc. R.E. Broker
PH: 785-262-1185

52ND ANNUAL
KSU RODEO

FEBRUARY 22-23-24, 2008

WEBER ARENA • KSU CAMPUS

WHEELCHAIR ACCESSIBLE



FEBRUARY 22, 2008

Friday Night Performance • 7:30 pm

FEBRUARY 23, 2008

Saturday Afternoon Performance • 1:00 pm

Saturday Night Performance • 7:30 pm

FEBRUARY 24, 2008

Sunday Afternoon Performance • 1:00 pm

Advance Tickets are \$8 for Adults and \$4 for Kids 12 and Under

At the door tickets are \$10 for Adults and \$5 for Kids 12 and Under

TICKETS ARE AVAILABLE AT

RB Outpost, Orscheln's Farm and Home, Varney's Bookstore, The K-State Union Bookstore, Vanderbilts in Wamego, and Roy Frey Western Wear in Topeka

FOR MORE INFORMATION OR QUESTIONS CONTACT:
Russ Gottlob @ 785-313-6347



World Championship trophies won by Hofferrosa Ranch Quarter Horses adorn the living room of John and Barbara Hoffer's picturesque home.

Continued from page 12

have my friends over, and I'd usually be the one who ended up riding the mule,

Ole Blue.

"When I was ten, I got a half-Quarter Horse, half-Apaloosa who was dun in

color. That's when I really became fond of horses with that color," Barbara continued. "I'm partial to buckskin and dun horses, but disposition and conformation are still the most important things we consider."

A career as an executive for Santa Fe Railroad brought Barbara by way of Chicago to Topeka, where she met John. "We were married and just wanted some horses to ride, but we ended up with a \$500 buckskin weanling filly that I decided to show," she recalled. "I didn't know anything about it, but I had so much fun that we decided to get into the horse business."

Uniquely enough, that first project filly, Perfect Crystl Pistol, named by the Hoffers after a country-western bar they patronized while dating in Florida, has produced several world champions and is again heavy in foal.

An acreage south of Topeka was acquired by the Hoffers and has been developed into their 210-acre facility, including stall barns,

indoor exercise arena and breeding barn, as well as several smaller barns, with outdoor runs.

Barbara took early retirement to manage the breeding operation. "John is not only my husband but my best friend and the best partner I could have in the horse business," she complimented.

Their eight-year-old home, complete with televised view of the barn's foal-

ing stalls, sits on the hill overlooking the horse operation. Parents of a son, Zach, the Hoffers own Chrysler-Dodge dealerships in Topeka and Carthage, Mo.

First major winner for Hofferrosa was the buckskin stallion Sir Love To Buckalot. "We saw a sibling of his at the World Buckskin Show and contacted the owners, Char-Lin Ranch in Oklahoma, about their stallion CL Buckley," Barbara remi-

nised. "We decided to breed our daughter of Sir Lovealot to CL, and they produced Buckalot, who became a four-time ABRA world champion.

Standing in a paddock near the barn, Buckalot nuzzled Barbara as she explained, "He is the most intelligent horse I have ever been around. Buckalot has the very best disposition

Continued on page 14

Mid-America FEED YARD *Finishing First*

The cattle industry is changing but here at **Mid-America Feed Yard** the things that have not changed is the stability, honesty and integrity in which we do business. If you are looking for a commercial feed yard whose focus is on performance and customer service, who will be here for you day after day, year after year. Call or better yet, come see for yourself why cattlemen from across the country are **Finishing First** at **Mid-America Feed Yard**.

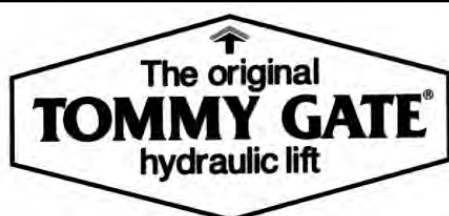
- ★ Pens 40 to 300 head ★ S/E Nebraska
- ★ 6 Packers buying live, on the rail or value based
- ★ 5% feed financing ★ Large mounds & wide aprons
- ★ Cattle Financing ★ PVP Approved ★ Fixed corn pricing

1-800-228-4532

Ohiowa, Nebraska

(38 miles West of Beatrice on Hwy. 4)

Doug Kart, General Manager • Pat Bentley, Yard Manager
Dave McCoy, Director Marketing



We offer liftgates for most full size and mini, foreign and domestic pickups. Also van, rail lift, and service body applications. Lifting capacities range from 500-2,000 lbs.

Options include a variety of platform materials and sizes.

Ginder Hydraulic, L.C

1218 N. 9th Street • Salina, KS • 1-800-800-1909

Everything about the AGCO Hesston 5000 Series round balers are designed to produce exceptional 4'x5', 4'x6' or 5'x6' bales with less time in the field - and in the shop. No matter what crop you're harvesting, you

get increased reliability, efficient hay handling and improved serviceability. See how your productivity can be increased and find out more about the 5000 Series at your AGCO Hesston dealer today.



Bale More. Work Less.

- The 5000 Series Round Balers feature automatic bale wrapping for ease of operation
- Choose from Auto-Tie or Auto-Cycle balers for more efficient baling
- Single piece side shields provide easy maintenance access
- Side flares and adjustable rear pivot windguard for better crop control
- Aggressive stuffer action for quick bale starts
- Set bale size, twine or mesh wraps from control box

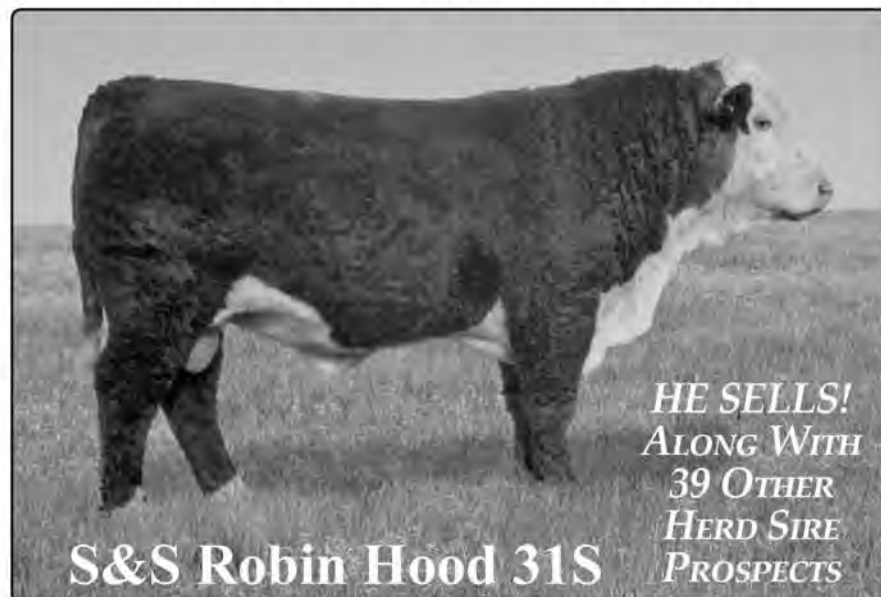


**POLLED
HEREFORDS**

**35th Annual
Production Sale
Tuesday, March 4,
2008 - 1:00 PM**

*At the ranch located eight miles north and one mile west
of Guide Rock, Nebraska*

SELLING: 77 LOTS
4 Yearling Bulls - 36 Two Year Old Bulls
37 Bred Two Year Old Heifers



**HE SELLS!
ALONG WITH
39 OTHER
HERD SIRE
PROSPECTS**

*View Our Catalog Online at: www.schutteandsons.net
Call or E-mail Today For A Sale Catalog*

SCHUTTE & SONS

Allen & Ron Schutte - 1417 Road 2100, Guide Rock, NE 68942

Phone: (402) 756-3034 (Allen) Phone: (402) 756-3462 (Ron)

Email: arschutte@gtmc.net (Allen) Email: rnschutte@gtmc.net (Ron)

Fax: (402) 756-2136 Web: www.schutteandsons.net

SUPERIOR, NEB.

Superior Implement
402-879-4723

AUBURN

Garrett Ranch Supply
785-256-2372

LAWRENCE

Shuck Implement
785-843-8093

LINCOLN

Lincoln Farm Supply
785-524-4421

KALVESTA

Kalvesta Implement
620-855-3567

MINNEAPOLIS

Lott Implement
785-392-3110

HILLSBORO

Ag Power Inc.
620-947-3182

EMPORIA

Schaefer Equipment
620-342-3172

Continued from page 13
and is a great riding horse.
"I broke him myself," she related. "He was third in

western pleasure at the world show as a four-year-old, the first time he was ever shown. He came back



Not Kiddin Me, owned by John and Barbara Hoffer's Hofferosa Ranch Quarter Horses at Topeka, was named the world champion open halter three-year-old stallion at the 2007 American Quarter Horse Association World Championship Show in Oklahoma City.

AUCTION

SATURDAY, FEBRUARY 23 — 9:30 AM

627 Market Street — PORTIS, KANSAS

SELLING AT 12:00 NOON

OVER 50 GUNS INCLUDING: Colt M 1903 pocket pistol .32 ACP, nice; Combat Commander 45 ACP pistol; New Frontier Scout Convertible 22 mag. .22 LR, like new; M 1851 Navy .36 cal. rev. with 7 1/2" barrel; M 1894 Bisley 38-40 S.A. rev with Scarce 7 1/2" bbl.; Winchester Model 25 12 ga.; Model 67 22 bolt; Model 190 with Simmons 4x32 scope; Model 74 22 rifle; Model 67A 22; Model 1912 12 ga. full choke; Smith and Wesson M12-2 M&P AWT 38 spl. with 2" barrel; M 1 1/2 32 S&W spur trigger rev.

ANTIQUES, PRIMITIVES
COLLECTIBLES INCLUDING Swords, replica calvary, etc.; daggers; knives; clock parts and watch crystals; old photographs; gold pocket watch; old Indian arrowheads; star photos, Tom Mix, Roy Rogers, etc.; Listen Look picture books; 1953 Chicago Cubs Sporting Training Season pamphlet; Nebraska Rodeo souvenir programs, 1948, 58,

59, 61; Watts bowl adv. Bi-Lo Market Narka, KS; Apothecary jars; poultry feeder and fountain crock; Rock Island button and pin; Indian bookends; tin Blue Line feed sign; old wrenches and tools; 1952 Massey Harris and 1950 International calendars; "Done in the Open" drawings by Frederick Remington book; Carnival toothpick; Mother of Pearl JD Hunter Trader Trapper case watch fobs; Cl Boy Scout, elephant, Mutt and Jeff banks; Winchester Model 37 shotgun instruction book; marbles; Smith and Wesson collector knives Goebel bird; Aladdin and other Kero lamps; Fenton pieces.

FURNITURE

REMINGTON CHAIN SAW
GUPPY OUTBOARD MOTOR
WELDING HELMETS
1.7 1/2 hp tiller; boat engine and misc. tools.

MISCELLANEOUS
HOUSEHOLD

SALE CONDUCTED BY:
WOLTERS AUCTION & REAL ESTATE
Box 68, 627 Market St. • Portis, KS 67474
Phone No. Office: 785-346-2071 • Home: 785-346-2524
Toll-Free: 866-346-2071 • Cell: 785-545-7097
email: wauction@ruraltel.net
website: www.woltersauctionandre.com
Col. Jim Wolters, Broker & Auctioneer
Assisting Auctioneer: Col. Rich Fairbank

MARTIN GRAIN FARMS, INC.

AUCTION

SATURDAY, MARCH 1 — 11:00 AM CST

925 SW 30th
COLUMBUS, KS 66725



INCLUDING:

- * Tractors * Combine * Sprayer
- * Semi Trucks
- * Misc. Tillage Equipment
- * Large Amount of Misc.
- * Shop Equipment

Large Equipment sells at 12:30 PM

Col. Jack Garner Auctioneer
Contact: Neil martin
Phone: 620-674-1237
Email: mfarmco1151@yahoo.com
Unknown buyers bring letter of credit

Complete Listing and Information
www.delbertrowden.com

and placed sixth in trail the next year."

The stallion has produced several champions, with a majority of his offspring having color, buckskin or palomino.

Dun Beyond Reality, now a nine-year-old stallion, collected multiple world championships and was headed toward a breeding career, with interest from throughout the continent.

"He is infertile with an unusual sperm impediment. We've had him with the top reproductive specialists in the world, and there is nothing that can be done," Barbara analyzed. "This was a major setback in our business strategy and such a loss to the Quarter Horse industry. Dun Beyond Reality could have produced some of the best of the breed."

In his personal pen, with a fertile, former world

champion mare, the 16.3-hand, 1,800-pound stallion will live his days intact on the ranch. "Sometimes putting an infertile stallion with a mare year around will get a foal, but it hasn't worked this time. He'll always be a stallion and stay right here. He deserves that," Barbara declared.

Endzone Dancer, a black, 16-3 hand, N/N stallion by Touchdown Kid, was raised by the Hoffers, out of their mare Impressed Bar West in 2002. He placed in the top ten at the AQHA World Show and the Quarter Horse Congress.

John, who prefers not to show, exhibited Endzone Dancer to place third at the AQHA Select World Show, for amateur exhibitors over 50. The stud will stand in Texas again this year.

A palomino stallion, Too Yella To Streak, was bred,

AUCTION

WEDNESDAY, FEBRUARY 27 — 10:00 AM

LOCATED: (5770 SE 150TH ST.) or 2 miles South, 4 miles East of RAGO, KS or 1/2 mile West, 2 miles South, 1 mile West of ADAMS, KS.

MACHINERY, TRUCK, CARS & CAMPER TRAILER

1989 1/2 AC Gleaner combine R60, cab and air, 27 ft. straw chopper, 1850 hrs., 50 acres on complete rebuild; 1984 AC 8070 tractor, cab and air, 3 hyd., 3 pt., duals, FWA, 1000 hrs. on OH; 1976 Chev C65 truck, tandem drag axle, 20 ft. bed and hoist, 5 spd. 2 spd. 366 motor, slick; 1994 Lincoln Town car, 4 dr., loaded, 123,000 miles, nice; 1968 Chevelle Malibu car convertible, new top, 4 spd., nice; 1986 Jayco camper trailer, 32 ft. self contained, nice; 7'x10' enclosed utility trailer, like new; 1954 Chev 3100 1/2 ton pickup, restorable; 1953 GMC 3/4 ton pickup, flatbed, restorable; JD 8350 grain drill, 20x8, press, fertilizer, good; JD 7-16 semi mount plow; JD 5-18 semi mount plow; Schaffer 12 ft. offset disc; Ezee 28 ft. field cultivator; Crustbuster 28 ft. field cultivator; Crustbuster 24 ft. field cultivator; Ford 7 ft. bar mower, 3 pt.; Ford side delivery rake; 2-16 3 pt. plow; cement mixer, 3 pt.; 4 wheel combine header trailer; 500 gal. sprayer with booms, ground drive; 1988 Chev 1/2 ton pickup bed; steel Stroberg pickup stock racks; 12 volt; drill fill auger; stock tank and fuel barrels.

Many other articles too numerous to mention.
NOTE: Be on time, will finish early.

BEN A. REIDA — SELLER
Phone: 620-896-2160

GIEFER AUCTION SERVICE
Larry Giefer, Auctioneer & Real Estate Broker, Kingman, KS
Phone 620-532-2883
www.gieferauctionandrealstate.com

FARM AUCTION

SATURDAY, MARCH 1 — 11:00 AM

LOCATION: From MANHATTAN, KS: Go East on 24 Hwy. to Flush Rd., North 7 miles to Louisville Rd., East 1 mile & North 3/4 mile. From WAMEGO, KS: Go North on 99 Hwy. 4 miles to Louisville Rd., West 7 miles to Rockenham Rd., North 3/4 mile.

TRACTORS
'69 JD 3020, sync. rnge, dsl. w/WF, F11 Farmhand, bale fork, bucket & spear; MF 65 gas, WF, eng. overhauled.

COMBINES & HEADS
JD 4420 dsl w/cab air, chopper, 3363 hrs., shedded; JD 16' flex head, JD 16' wht. head, JD 5-row 30" corn head; Hesston heads.

TRUCKS & MACHINERY
'78 IHC 2-ton, 18' bed, hoist, 5x2 trans.; '63 Chevy 2-ton, 6 cyl. w/bed & hoist; 25' combine trailer; '79 Chevy 4x4 pickup; JD 7000 planter, 6-row, finger pickup w/dry fert., insect. boxes & seed mt.; JD 21x7 8350 fertl drl., dbl. disc openers & press wheels; NH mod. 276 wire tie baler w/Farmhand accumulator; NH 469 9' swather/conditioner; NH 256 rake w/frt. wheels; NH 355 grinder/mixer w/scale; IH 3 pt. 6-row cultivator; IHC 8' pull-type chisel; IHC 5x16 semi-mtd. plow; Big Ox 3 pt. V-chisel; JD 14 tandem disc; JD 3 pt. 4-sec. harrow; 2 AC 1200 21' fold cultivators; NH3 1000-gal. nrse. tank; NH3 14' applicator on wheels & tank; NH3 3 pt. fold-up applicator; 3 pt. 8' rear blade; 2 old JD 3 pt. 3-btm. plows; 3 pt. 5' BMB rotary mower; 3 pt. Orthmann 6-row irg. dtchr.; old AC round baler; home built auger wagon; 3 pt. 200-gal. mtd. sprayer & pump; 500-cyl. propane tank on wheels; JD #5 sickle mower;

20' hay trailer; 28' HD hay trailer; 4-whl. trlr w/bed hoist; 3 pt. Gopher Killer; 3 pt. mtd. carry-all; 54' ptbl. grn. aug.; 1 Hpr btm. bed.

IRRIGATION EQUIPMENT
2-whl. Ford 300, LP w/pump, good unit; 2-whl. pump w/Waukesha eng.; 2-whl. pump w/burnt eng.; 4100' of 8" gtd. pipe, slds. gt. on 36"; 180' of 8" plain, misc. ftgs.; pipe trailer.

HOG & CATTLE EQUIP.
Feed bunks, (2) 18' oak, (1) 16' oak; rd. bale feeders; 2 pmp. jacks; port. ld. chute; 8' sld-in rack; cattle pnls; hog pnls; snow fence; T-posts; elec. posts; (42) 4x8 concrete hog slats, new; misc. fencing; hog sheds, portable; hog feeders; hog panels; 7 hog wtrs; baby pig litter scale; 20 frwg. crates w/SS fdrs.; SS nursery feeders; 2 heat exchg.; semen cooler.

GRAIN EQUIPMENT & MISC.
6 Columbian hopper btm. bins on I beam, elev. pkg. (2) 31T 110-bu. & (4) 37.5T 1350-bu.; Stl. dsk., brdg. plks & asst. oak & trtd lbr.; 4-whl ant. corn sheller; old JD cult'v.; Old Dearborn corn pkr.; Western hi-back saddle & old harness; Honda 125 trail bike.

CONSIGNED BY NEIGHBORS
JD 960 23 1/2' fld. cltv. w/har-row; Logan chopper trsh. pump w/Wisc. eng.

TERMS: bid by number. ID required. Statements made day of auction take precedence over any and all written material. Sellers and auction company not responsible for accidents or lost property. Have large building in case of rain. Lunch served by St. Joseph Altar Society.

OWNERS: EICHMAN BROS., 785-456-3457
HOUBLER AUCTION COMPANY
AUCTIONEERS:
Everett Hoobler, 785-256-5790 Dennis Rezac, 785-456-4187

raised and shown by the Hoffers. He was reserve champion in his age division at the 2007 World Palomino Show and will be standing this year at the Hofferosa Ranch.

Although professional showmen are sometimes called upon to exhibit Hofferosa Quarter Horses, Barbara often shows the horses herself in both amateur and open competitions. John does only limited showing.

Her basement office is filled with awards, and Barbara is most proud of the five Quarter Horse world championship trophies and multiple reserve and third place awards displayed in

their living room.

"We're just small Kansas breeders who do all of our own work," Barbara clarified. "Kansas is not considered a major Quarter Horse state, so we're really happy that we've been able to compete against the big breeders in Oklahoma and Texas."

After attending equine breeding training in Colorado eight years ago, Barbara does all of the collection, breeding and semen freezing and shipping as well as palpations for the operation. With a few exceptions, only mares owned by Hofferosa are mated at the ranch. However, she does


Continued on page 26

FARM AUCTION

SATURDAY, FEBRUARY 23 — 10:00 AM

As we are retiring from our farm operation the following machinery and equipment will be offered for public auction at the farm located 8 mi. west of La Cygne, KS, on Hiway 152 to KS Hwy 7 then south 2 mi. to 1900 Rd, then east 1/2 mile.(La Cygne is located 50 miles south of Kansas City on Hiway 69). Follow signs.

LACYGNE, KANSAS



TRACTORS
1979 JD 4440 Dies cab & air with Quad transmission, duals, front weights, good strong tractor, runs great; 1969 JD 4020 with roll bar canopy, new rubber, runs great; 44 Massey with live PTO, power steering and 3 pt.

TRUCKS
1967 Chev 50, 327 V8 4 spd w/2 spd axle with 16' bed & hoist (double rams) with 40" metal grain sides & stock racks; 1964 Chev 60 with 6 cylinder 229 engine, 4 spd w/2 spd axle 16' grain bed with 40" metal grain sides & stock racks; 1970 GMC 10 wheeler twin screw 10 spd truck with 666 Detroit, 20' bed, holds approx. 500 bu. of beans or 600 bu. corn; 1946 Dodge 1 ton 6 cylinder truck with flatbed and duals, 4 spd. WF 32 model.

FAST HITCHES
2 John Deere Category 3 hitches.

TILLAGE EQUIPMENT
JD model 750 no till drill, 20 ft. with 7 1/2" spacings, ready to go; 2- 8 row JD 3 pt. cultivators models RM; JD 7000, 8 row planter; JD 400 rotary hoe; 12' JD 3 pt. rotary hoe; JD Mod. 1,000, 18' folding field cultivator; JD 4-16 semi-mounted plow; JD 7 knife 3 pt. V ripper; Best way 40', 500 gal 2 wheeled field sprayer with foam markers; JD 235, 18' folding disc; JD mod 100, 12' pull type chisel plow; One harrow section; 4-16" JD mounted plow; 220 JD saddle tanks; Clark 16' anhydrous applicator; F350 JD 5-18" bottom semi mounted plow; JD mod. 8250 21 hole grain drill; 8 row JD mounted rotary hoe.

COMBINE
1984 M-2 Gleaner combine diesel with JD 18' flex head (no. 918); AC 430 4 row corn head; also belting for Gleaner combine.

HAY EQUIPMENT
Hesston 1090 9' mower conditioner; Vermeer 9' hydraulic side delivery rake; Mod. 37 JD 9' pull type sickle mower; Two 3 pt. bale forks & two 3 pt. bale stingers; Vermeer model 605 Super F Big Round Baler w/hydraulic auto tie; 30' 4 wheeled hay wagon.

FUEL TANKS
1,000 gal. elect. pump diesel tank (extra good); 90 gal. hand pump portable fuel tank; 400

gal. stainless steel tank & stand; 300 gal. oil.

OTHER EQUIPMENT
3 pt., 4'X6' carrier with racks; Killbrothers 350 Gravity Flow wagon with extension metal side boards and 12' swing auger; M&W 300B Little Red Wagon Gravity Flow Wagon with metal extension sides & flotation tires; Stainless steel 4 ton fertilizer buggy with hydraulic tail gate adjuster; JD Farm wagon with metal bed and hoist; 6', 3pt. blade; JD #407, 7', 3 pt. rotary mower w/rear laminated tire; 7' push blade for tractors; Mod L 503 woods Belly mower; Monitors and sprayer pumps for planters and sprayers; 3pt. Hardi 45' hydraulic boom sprayer with 2-200 gal. saddle tanks with #300 Raven Flow meter and radar control; Grain Cart-500 bu, United Farm Tool Grain cart with PTO drive, roll over tarp.

GRINDER MIXER
JD 400 grinder mixer always shedded.

HOG EQUIPMENT
Approx. 12 stainless steel Pride of the Farm 5 bushel pig feeders; 20 Steel farrowing crates.

CATTLE EQUIPMENT
30 Bu. Galvanized calf creep; Square bale feeder.

BULK BIN
Chore -Time 70 bu. Gravity Flow galvanized bin.

SALVAGE
Iron & steel; Elect. motors; Batteries; Copper & copper wiring; Short iron.

SHOP & TOOLS
2 ton Chain hoist; 20th Century arc welder; buckets of bolts and nuts; hand tools, jacks and more.

MISCELLANEOUS
Brick (Approx 400 bldg. brick); Metal cement mixing box; 6" perforated black plastic drainage pipe; Receiver hitch; 500 gal. propane tank; Air compressor; JD Cylinders; Cylinder hoses; Goose neck ball plate; Implement tires & rims; Like new elect. motors; 450 gal. plastic pickup bed water hauling tank and more.

AUGERS
Late model Peck 70' portable 10" auger with hydraulic lift and unloading hopper; 42' portable Jet Flow 6" Auger; 70' Mayrath portable auger, PTO w/swing hopper;

GRAIN TRAILER
400 bu. center gravity pendal hitch pup with air brakes.

PLANTER
IH 8 row model 800 cycle air planter with 3 drums, 30" rows.

HAY
80 big bales of brome.

AUCTIONEER NOTE: The Stainbrooks are well known for their many years of excellence in farm and livestock management practices.

TERMS AND CONDITIONS: Not responsible for accidents. Verbal statemetns made day of sale take precedence over written material.

WILBUR & RUTH ELLEN STAINBROOK

Sale conducted by:
MARTY READ AUCTION SERVICE
Marty and Beverly Read
Mound City, KS 66056 • 913-795-2508
Real Estate, Antique, Farm, Livestock & Commercial

For The Love Of Horses . . . continued

Continued from page 14

ship considerable semen to other breeders.

"It's really busy around here from now on," Barbara noted. "We started our mares and stallions on an 18-hour light program in November so they'd cycle early."

Not only are mares exposed to longer light duration in barns, but expansive floodlights lengthen the light period for outside stallion and mare pens as well. "I keep all of my horses outside as much as I can. It's more natural and they are healthier," she commented. "We're fortunate to have these pastures for them."

With about 15 broodmares, Barbara explained that they are all N/N and out of world champions or

producers of champions. "John and I began buying N/N mares when other breeders were still concentrating on the HYPP horses," added the breeder, who testified before the AQHA Stud Committee about the detriments of breeding HYPP positive horses.

"We are going for quality, not quantity in our business," Barbara verified.

While mares are key to proliferation of a program, Hofferrosa has had a higher percentage of stallion foals. "I like the boys. I get along with stallions better than mares," Barbara said. "A barn full of mares is like an office full of women. They're always squabbling."

"I never have any trouble handling these stallions. I treat them right, and they

are gentlemen," she insisted.

Looking to the Hofferrosa Quarter Horses name being prominent around the world, Barbara concluded, "We've been very fortunate in our short time in the Quarter Horse business to have had this many really good horses. I don't want to take any credit for it. There is a much greater power than us who is responsible for all of this."



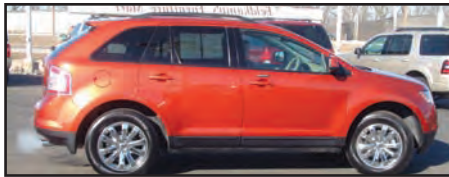
Visit our website for hundreds of upcoming auctions across the country!
grassandgrain.com

Deals on Wheels at Dick Edwards



2004 Chevy S-10 ZR5
4.3 Lit. V6, 4x4.

NICE TRUCK! Sale Price: \$15,995



2007 Ford Edge SEL
AWD, 16K

Sale Price: \$26,995



2005 GMC Denali
61K, loaded, 4x4.

Sale Price: \$25,995



2007 Lincoln Town Car
11K, Signature.

Sale Price: \$28,995



2006 Ford Fusion SE
4 cylinder, 38K.

Sale Price: \$15,995



2006 Lincoln Mark LT
Loaded, 4x4, DVD

HOT TRUCK! Sale Price: \$25,995



2007 Mercury Grand Marquis LS
10K, Leather. **Sale Price: \$19,995**



2005 Ford Freestyle AWD, 32K
~~\$18,995~~ **Sale Price: \$17,995**



2004 Ford F-150 Fx4
80K miles, well equipped. **\$19,995**



2007 Dodge 3500
Mega Cab, Cummins diesel, 4x4, 31K.
\$32,995

Come see the

NEW MAZDA CX9




DICK EDWARDS

FORD - LINCOLN MERCURY

7920 E. HWY. 24

MANHATTAN, KANSAS


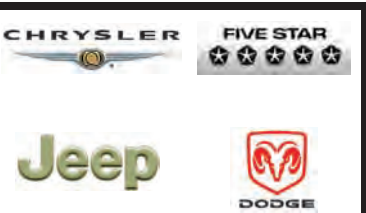
www.dickedwards.net
E-mail: sales@dickedwards.net



800-257-4004

785-776-4004



Kansas Truck Capital

430 S. Arizona • HOLTON, KANSAS

Phone: Sales 785-364-4888 • Service 785-364-4777

Toll Free: 877-488-2424

SPECIAL ALLOCATION FROM CHRYSLER!

Due to Record-Breaking Truck Sales, Gary Hardy Dodge has teamed up with Chrysler to pass these unheard-of savings on to the public!



2008 DODGE RAM HD QUAD
Up to \$10,000 OFF msrp*
and 4.9% x 60 mo. wac



2008 DODGE RAM 1/2 TONS
Up to \$12,000 OFF msrp*
and 4.9% x 60 mo. wac



**1985
JD 950
TRACTOR**

\$6,500

**In Stock Units Only. All Rebate to Dealer.*

**"Remember Trucks Are Like Eggs ...
... They Are Cheaper In The Country!"**

Open 24 Hours At garyhardy.com
Northeast Kansas fastest growing truck dealer!!